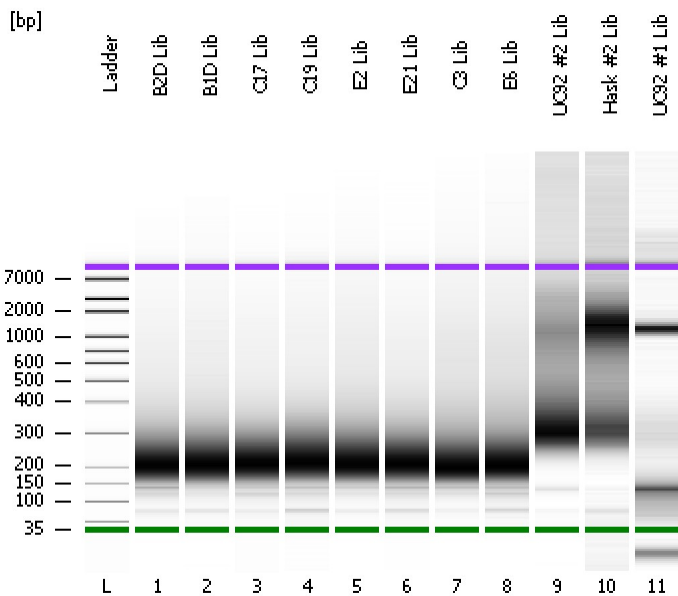


Assay Class: High Sensitivity DNA Assay
Data Path: C:\...ents and Settings\Bioanalyzer\2012-07-11\2012-07-11_002.xad

Created: 7/11/2012 10:09:40 AM
Modified: 7/11/2012 10:55:51 AM

Electrophoresis File Run Summary



Instrument Information:

Instrument Name: DE13701086 Firmware: C.01.069
Serial#: DE13701086 Type: G2938B

Assay Information:

Assay Origin Path: C:\Program Files\Agilent\2100 bioanalyzer\2100 expert\assays\dsDNA\High Sensitivity DNA.xsy
Assay Class: High Sensitivity DNA Assay
Version: 1.03
Assay Comments: Copyright © 2003-2010 Agilent Technologies

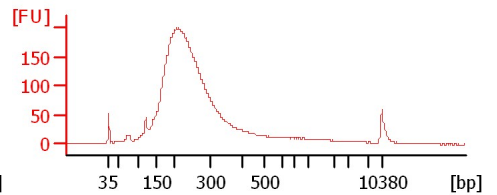
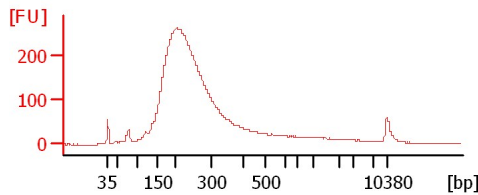
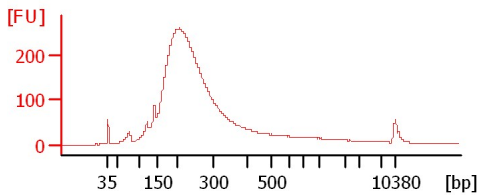
Chip Information:

Chip Lot #: Reagent Kit Lot #: Chip Comments:

B2D Lib

B1D Lib

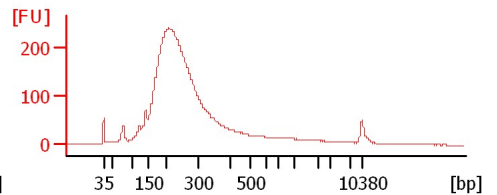
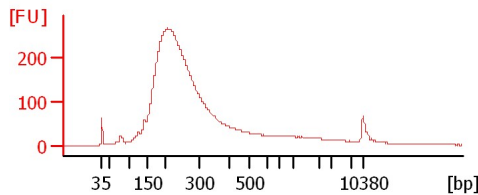
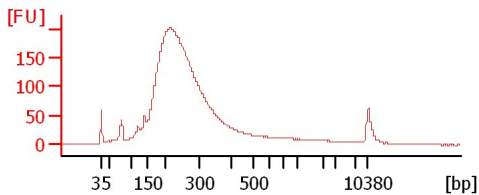
C17 Lib



C19 Lib

E2 Lib

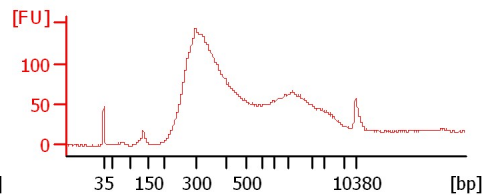
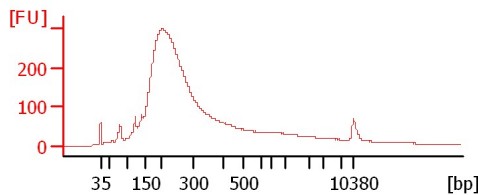
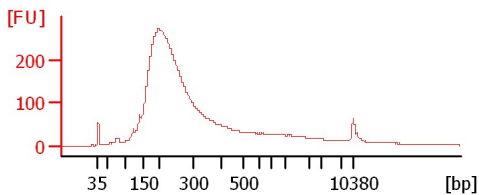
E21 Lib



C3 Lib

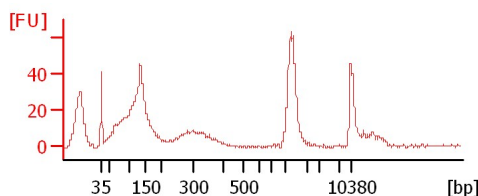
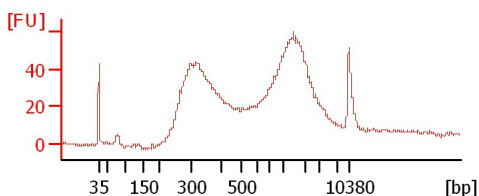
E6 Lib

UC92 #2 Lib



Hask #2 Lib

UC92 #1 Lib



Assay Class: High Sensitivity DNA Assay
Data Path: C:\...ents and Settings\Bioanalyzer\2012-07-11\2012-07-11_002.xad

Created: 7/11/2012 10:09:40 AM
Modified: 7/11/2012 10:55:51 AM

Electrophoresis File Run Summary (Chip Summary)

Sample Name	Sample Comment	Rest. Digest	Status	Observation	Result Label	Result Color
B2D Lib		<input type="checkbox"/>	✓			
B1D Lib		<input type="checkbox"/>	✓			
C17 Lib		<input type="checkbox"/>	✓			
C19 Lib		<input type="checkbox"/>	✓			
E2 Lib		<input type="checkbox"/>	✓			
E21 Lib		<input type="checkbox"/>	✓			
C3 Lib		<input type="checkbox"/>	✓			
E6 Lib		<input type="checkbox"/>	✓			
UC92 #2 Lib		<input type="checkbox"/>	✓			
Hask #2 Lib		<input type="checkbox"/>	✓			
UC92 #1 Lib		<input type="checkbox"/>	✓			
Ladder		<input type="checkbox"/>	✓			

Chip Lot #

Reagent Kit Lot #

Chip Comments :

Assay Class: High Sensitivity DNA Assay
Data Path: C:\...ents and Settings\Bioanalyzer\2012-07-11\2012-07-11_002.xad

Created: 7/11/2012 10:09:40 AM
Modified: 7/11/2012 10:55:51 AM

Electrophoresis Assay Details

General Analysis Settings

Number of Available Sample and Ladder Wells (Max.) : 12
Minimum Visible Range [s] : 32
Maximum Visible Range [s] : 138
Start Analysis Time Range [s] : 33
End Analysis Time Range [s] : 137.5
Ladder Concentration [pg/μl] : 1950
Uses Standard Area for Ladder Fragments
Lower Marker Concentration [pg/μl] : 125
Upper Marker Concentration [pg/μl] : 75
Used Upper Marker for Quantitation
Standard Curve Fit is Point to Point
Show Data Aligned to Lower and Upper Marker

Integrator Settings

Integration Start Time [s] : 33.05
Integration End Time [s] : 137
Slope Threshold : 0.8
Height Threshold [FU] : 5
Area Threshold : 0.1
Width Threshold [s] : 0.6
Baseline Plateau [s] : 0.5

Filter Settings

Filter Width [s] : 0.5
Polynomial Order : 4

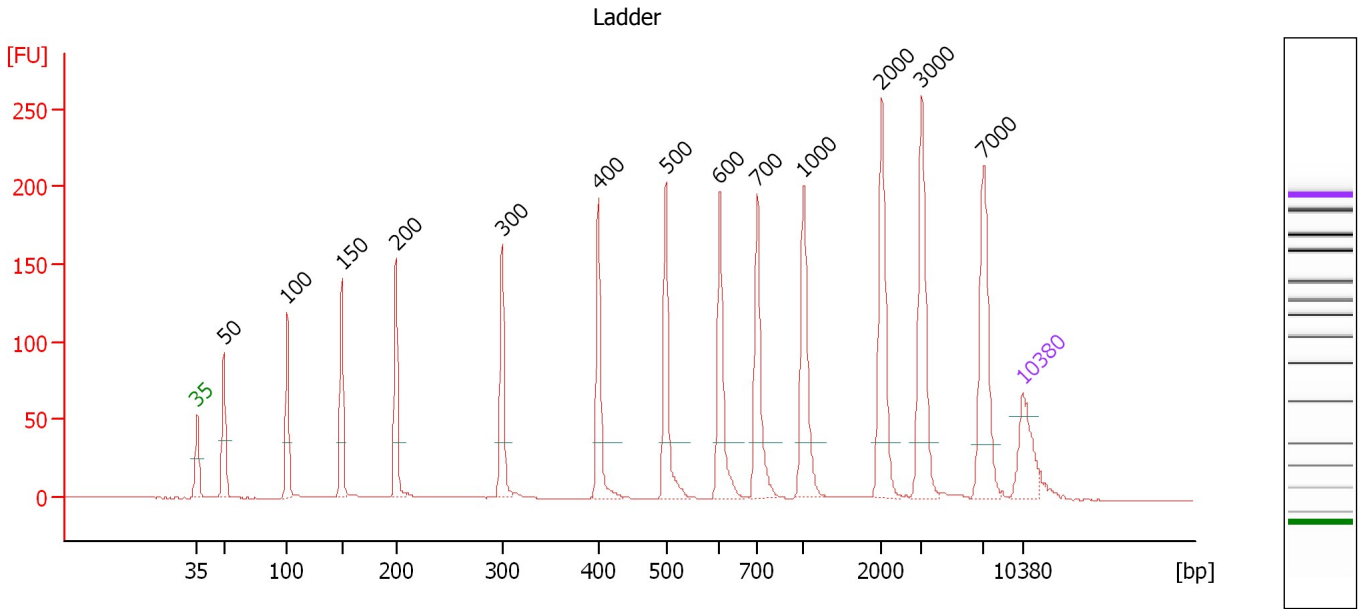
Ladder

Ladder Peak	Size	Area
1	35	160
2	50	210
3	100	208
4	150	221
5	200	242
6	300	270
7	400	305
8	500	306
9	600	336
10	700	321
11	1000	366
12	2000	413
13	3000	411
14	7000	400
15	10380	214

Assay Class: High Sensitivity DNA Assay
 Data Path: C:\...ents and Settings\Bioanalyzer\2012-07-11\2012-07-11_002.xad

Created: 7/11/2012 10:09:40 AM
 Modified: 7/11/2012 10:55:51 AM

Electropherogram Summary



Overall Results for Ladder

Noise: 0.1

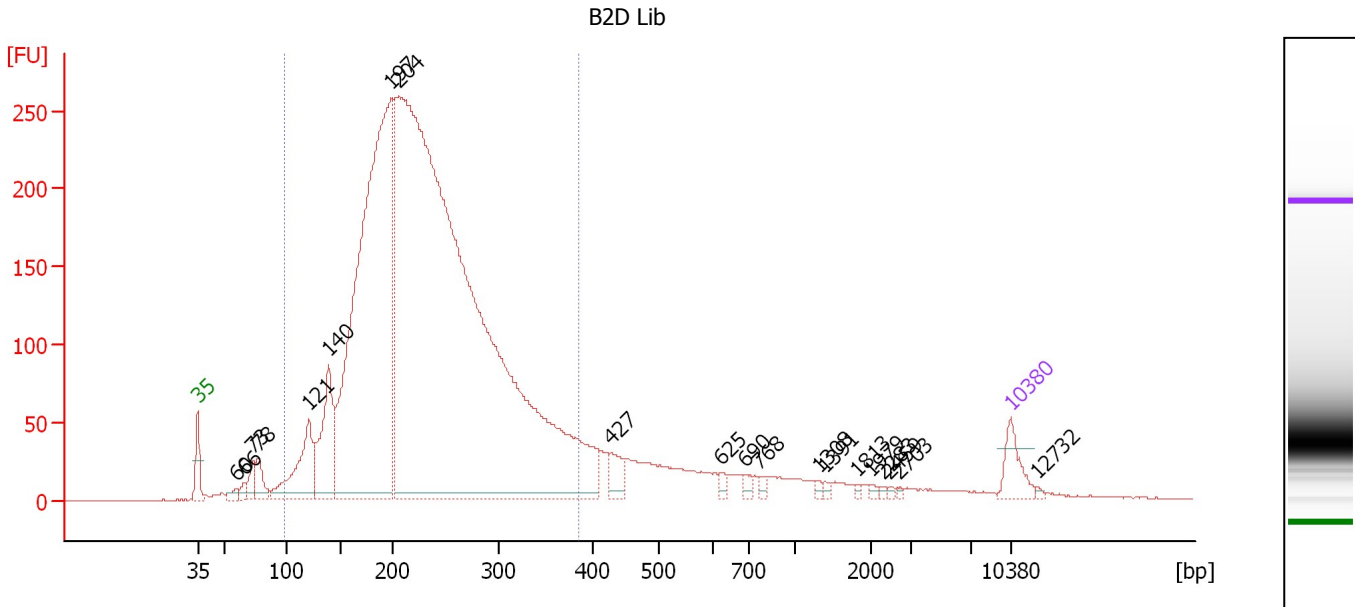
Peak table for Ladder

Peak	Size [bp]	Conc. [pg/μl]	Molarity [pmol/l]	Observations
1	35	125.00	5,411.3	Lower Marker
2	50	150.00	4,545.5	Ladder Peak
3	100	150.00	2,272.7	Ladder Peak
4	150	150.00	1,515.2	Ladder Peak
5	200	150.00	1,136.4	Ladder Peak
6	300	150.00	757.6	Ladder Peak
7	400	150.00	568.2	Ladder Peak
8	500	150.00	454.5	Ladder Peak
9	600	150.00	378.8	Ladder Peak
10	700	150.00	324.7	Ladder Peak
11	1,000	150.00	227.3	Ladder Peak
12	2,000	150.00	113.6	Ladder Peak
13	3,000	150.00	75.8	Ladder Peak
14	7,000	150.00	32.5	Ladder Peak
15	10,380	75.00	10.9	Upper Marker

Assay Class: High Sensitivity DNA Assay
 Data Path: C:\...ents and Settings\Bioanalyzer\2012-07-11\2012-07-11_002.xad

Created: 7/11/2012 10:09:40 AM
 Modified: 7/11/2012 10:55:51 AM

Electropherogram Summary Continued ...



Overall Results for sample 1 : B2D Lib

Number of peaks found: 20 Corr. Area 1: 5,182.0
 Noise: 0.2

Peak table for sample 1 : B2D Lib

Peak	Size [bp]	Conc. [pg/μl]	Molarity [pmol/l]	Observations
1	35	125.00	5,411.3	Lower Marker
2	60	29.94	754.2	
3	66	27.60	632.5	
4	73	69.27	1,430.3	
5	78	94.58	1,845.5	
6	121	348.67	4,376.0	
7	140	415.37	4,506.8	
8	197	2,891.71	22,195.2	
9	204	6,970.18	51,646.6	
10	427	79.71	282.7	
11	625	18.65	45.2	
12	690	22.07	48.4	
13	768	16.02	31.6	
14	1,308	9.02	10.4	
15	1,391	10.34	11.3	
16	1,813	6.55	5.5	
17	1,979	8.59	6.6	
18	2,283	6.17	4.1	
19	2,459	5.15	3.2	
20	2,703	5.21	2.9	
21	10,380	75.00	10.9	Upper Marker
22	12,732	0.00	0.0	

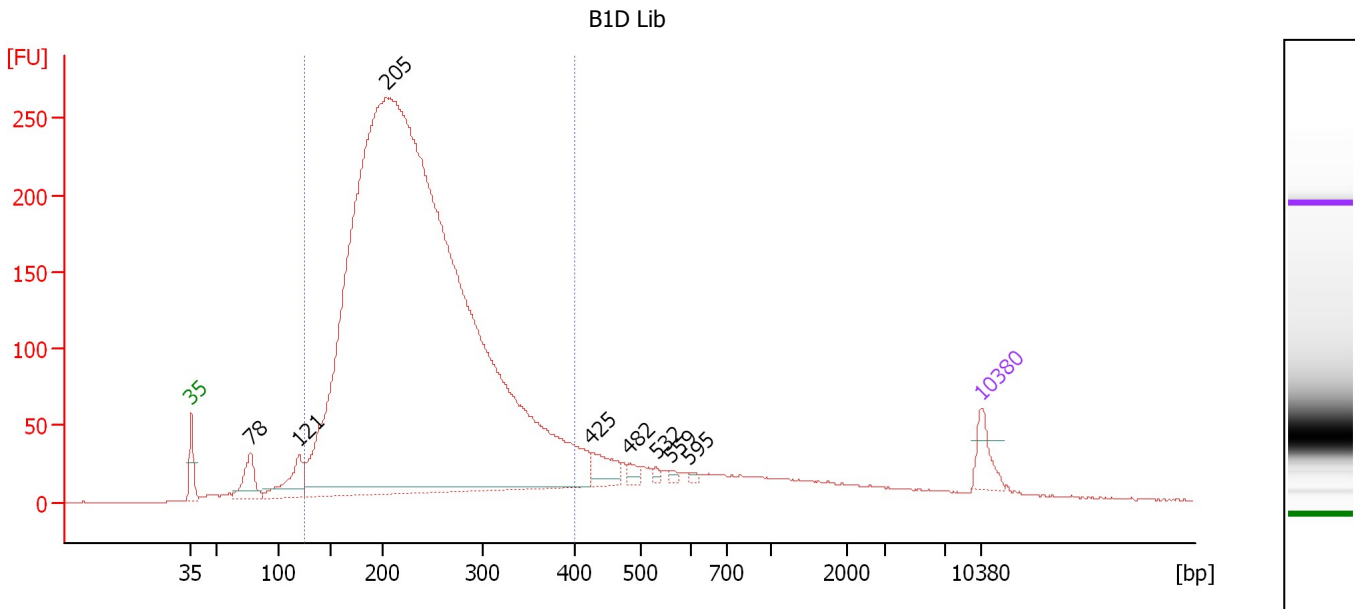
Region table for sample 1 : B2D Lib

From [bp]	To [bp]	Average Size [bp]	Molarity [pmol/l]	Conc. [pg/μl]	Corr. Area	% of Total	Size distribution in CV [%]	Color
98	385	230	70,969.6	9,829.94	5,182.0	87	25.4	Blue

Assay Class: High Sensitivity DNA Assay
 Data Path: C:\...ents and Settings\Bioanalyzer\2012-07-11\2012-07-11_002.xad

Created: 7/11/2012 10:09:40 AM
 Modified: 7/11/2012 10:55:51 AM

Electropherogram Summary Continued ...



Overall Results for sample 2 : B1D Lib

Number of peaks found: 8 Corr. Area 1: 5,198.8
 Noise: 0.3

Peak table for sample 2 : B1D Lib

Peak	Size [bp]	Conc. [pg/μl]	Molarity [pmol/l]	Observations
1	35	125.00	5,411.3	Lower Marker
2	78	178.44	3,479.2	
3	121	197.29	2,478.9	
4	205	10,679.38	79,057.1	
5	425	104.23	371.6	
6	482	32.61	102.5	
7	532	11.59	33.0	
8	559	11.08	30.0	
9	595	9.77	24.9	
10	10,380	75.00	10.9	Upper Marker

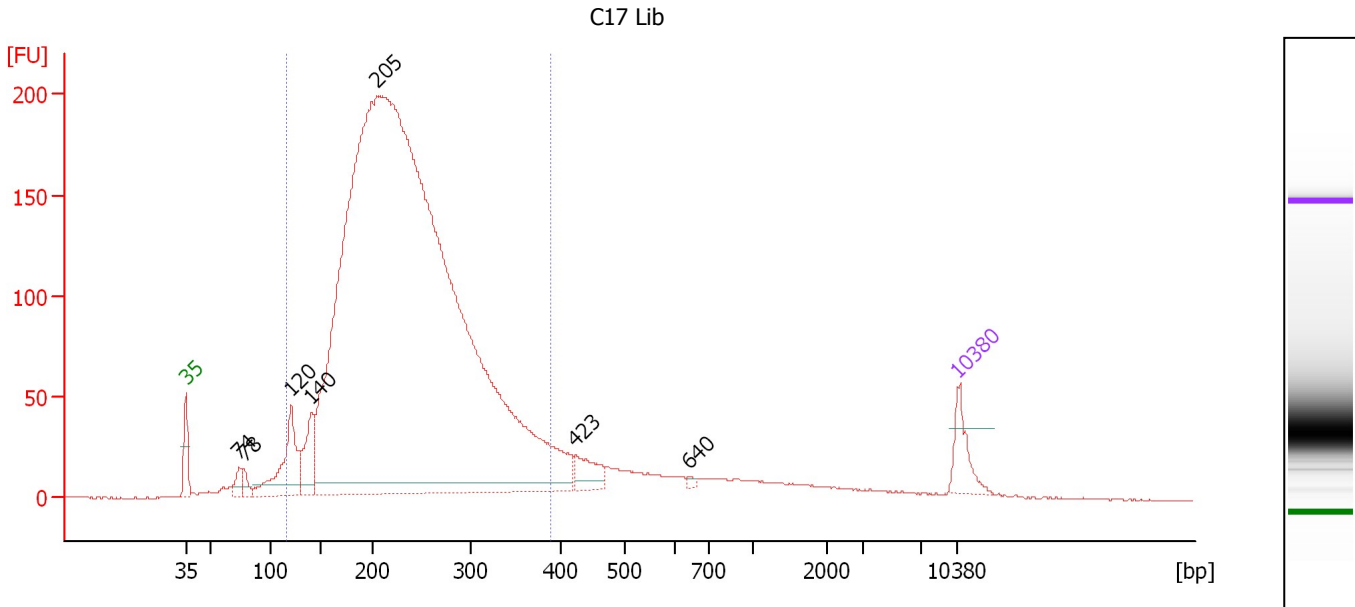
Region table for sample 2 : B1D Lib

From [bp]	To [bp]	Average Size [bp]	Molarity [pmol/l]	Conc. [pg/μl]	Corr. Area	% of Total	Size distribution in CV [%]	Color
127	400	238	71,549.6	10,378.22	5,198.8	85	24.6	Blue

Assay Class: High Sensitivity DNA Assay
 Data Path: C:\...ents and Settings\Bioanalyzer\2012-07-11\2012-07-11_002.xad

Created: 7/11/2012 10:09:40 AM
 Modified: 7/11/2012 10:55:51 AM

Electropherogram Summary Continued ...



Overall Results for sample 3 : C17 Lib

Number of peaks found: 7 Corr. Area 1: 3,919.3
 Noise: 0.2

Peak table for sample 3 : C17 Lib

Peak	Size [bp]	Conc. [pg/μl]	Molarity [pmol/l]	Observations
1	35	125.00	5,411.3	Lower Marker
2	74	48.87	1,001.8	
3	78	43.15	843.6	
4	120	303.69	3,821.9	
5	140	178.80	1,930.8	
6	205	8,230.15	60,862.6	
7	423	85.69	307.2	
8	640	8.44	20.0	
9	10,380	75.00	10.9	Upper Marker

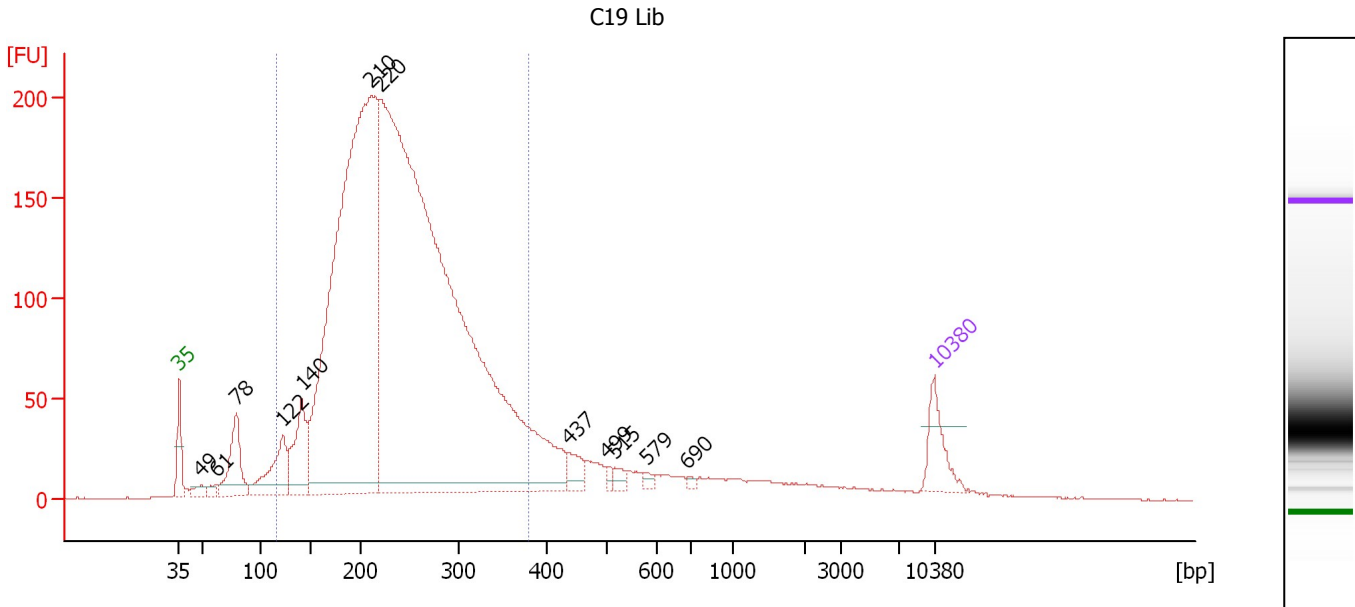
Region table for sample 3 : C17 Lib

From [bp]	To [bp]	Average Size [bp]	Molarity [pmol/l]	Conc. [pg/μl]	Corr. Area	% of Total	Size distribution in CV [%]	Color
115	389	235	56,862.9	8,113.77	3,919.3	88	24.3	Blue

Assay Class: High Sensitivity DNA Assay
 Data Path: C:\...ents and Settings\Bioanalyzer\2012-07-11\2012-07-11_002.xad

Created: 7/11/2012 10:09:40 AM
 Modified: 7/11/2012 10:55:51 AM

Electropherogram Summary Continued ...



Overall Results for sample 4 : C19 Lib

Number of peaks found: 12 Corr. Area 1: 4,048.5
 Noise: 0.4

Peak table for sample 4 : C19 Lib

Peak	Size [bp]	Conc. [pg/μl]	Molarity [pmol/l]	Observations
1	35	125.00	5,411.3	Lower Marker
2	49	29.26	909.0	
3	61	19.75	493.2	
4	78	195.05	3,782.0	
5	122	186.97	2,328.5	
6	140	205.32	2,215.5	
7	210	2,449.89	17,648.1	
8	220	4,228.58	29,166.1	
9	437	48.32	167.7	
10	499	12.87	39.1	
11	515	19.66	57.8	
12	579	12.50	32.7	
13	690	7.76	17.0	
14	10,380	75.00	10.9	Upper Marker

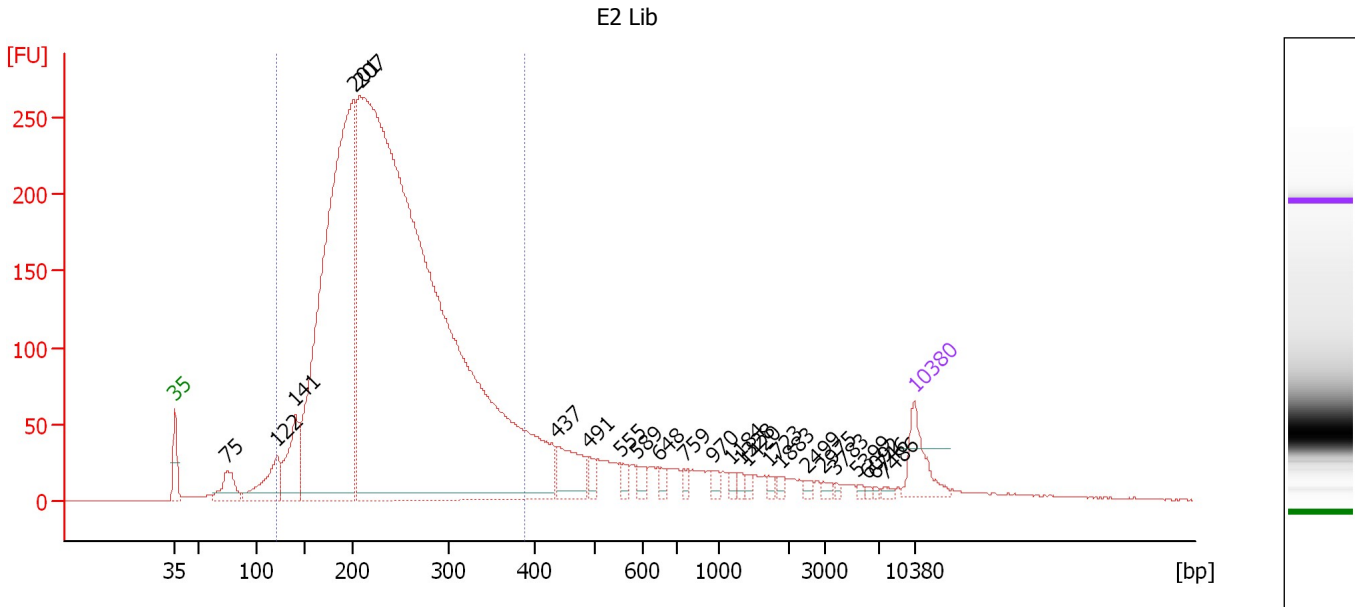
Region table for sample 4 : C19 Lib

From [bp]	To [bp]	Average Size [bp]	Molarity [pmol/l]	Conc. [pg/μl]	Corr. Area	% of Total	Size distribution in CV [%]	Color
114	381	239	45,286.7	6,595.71	4,048.5	85	23.8	Blue

Assay Class: High Sensitivity DNA Assay
 Data Path: C:\...ents and Settings\Bioanalyzer\2012-07-11\2012-07-11_002.xad

Created: 7/11/2012 10:09:40 AM
 Modified: 7/11/2012 10:55:51 AM

Electropherogram Summary Continued ...



Overall Results for sample 5 : E2 Lib

Number of peaks found: 24 Corr. Area 1: 5,199.8
 Noise: 0.3

Peak table for sample 5 : E2 Lib

Peak	Size [bp]	Conc. [pg/μl]	Molarity [pmol/l]	Observations
1	35	125.00	5,411.3	Lower Marker
2	75	93.09	1,882.0	
3	122	148.40	1,848.3	
4	141	187.07	2,013.1	
5	201	2,007.92	15,135.4	
6	207	5,363.47	39,225.0	
7	437	123.63	428.2	
8	491	28.33	87.5	
9	555	23.27	63.6	
10	589	22.08	56.8	
11	648	18.24	42.7	
12	759	13.71	27.4	
13	970	15.89	24.8	
14	1,184	11.67	14.9	
15	1,328	9.78	11.2	
16	1,420	9.75	10.4	
17	1,723	10.08	8.9	
18	1,883	8.89	7.2	
19	2,499	8.08	4.9	
20	2,975	8.74	4.5	
21	3,783	4.72	1.9	
22	5,399	4.88	1.4	
23	6,092	3.86	1.0	
24	6,746	3.47	0.8	
25	7,486	6.90	1.4	
26	10,380	75.00	10.9	Upper Marker

Assay Class: High Sensitivity DNA Assay
Data Path: C:\...ents and Settings\Bioanalyzer\2012-07-11\2012-07-11_002.xad

Created: 7/11/2012 10:09:40 AM
Modified: 7/11/2012 10:55:51 AM

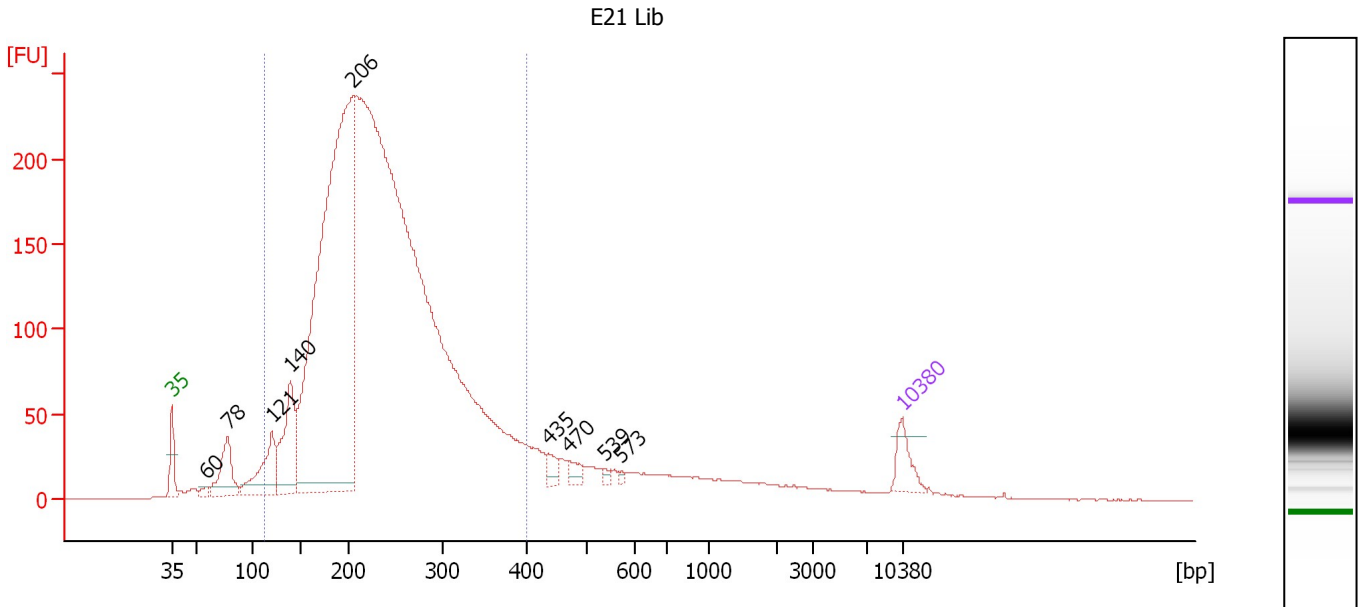
Electropherogram Summary Continued ...**... Region table for sample 5 : E2 Lib**

From [bp]	To [bp]	Average Size [bp]	Molarity [pmol/l]	Conc. [pg/μl]	Corr. Area	% of Total	Size distribution in CV [%]	Co lor
121	390	239	47,216.2	6,897.57	5,199.8	84	24.2	■

Assay Class: High Sensitivity DNA Assay
 Data Path: C:\...ents and Settings\Bioanalyzer\2012-07-11\2012-07-11_002.xad

Created: 7/11/2012 10:09:40 AM
 Modified: 7/11/2012 10:55:51 AM

Electropherogram Summary Continued ...



Overall Results for sample 6 : E21 Lib

Number of peaks found: 9 Corr. Area 1: 4,652.0
 Noise: 0.3

Peak table for sample 6 : E21 Lib

Peak	Size [bp]	Conc. [pg/μl]	Molarity [pmol/l]	Observations
1	35	125.00	5,411.3	Lower Marker
2	60	27.97	702.3	
3	78	251.46	4,859.4	
4	121	294.46	3,693.0	
5	140	407.28	4,401.3	
6	206	3,326.87	24,498.4	
7	435	44.77	155.9	
8	470	42.86	138.1	
9	539	14.14	39.8	
10	573	9.47	25.0	
11	10,380	75.00	10.9	Upper Marker

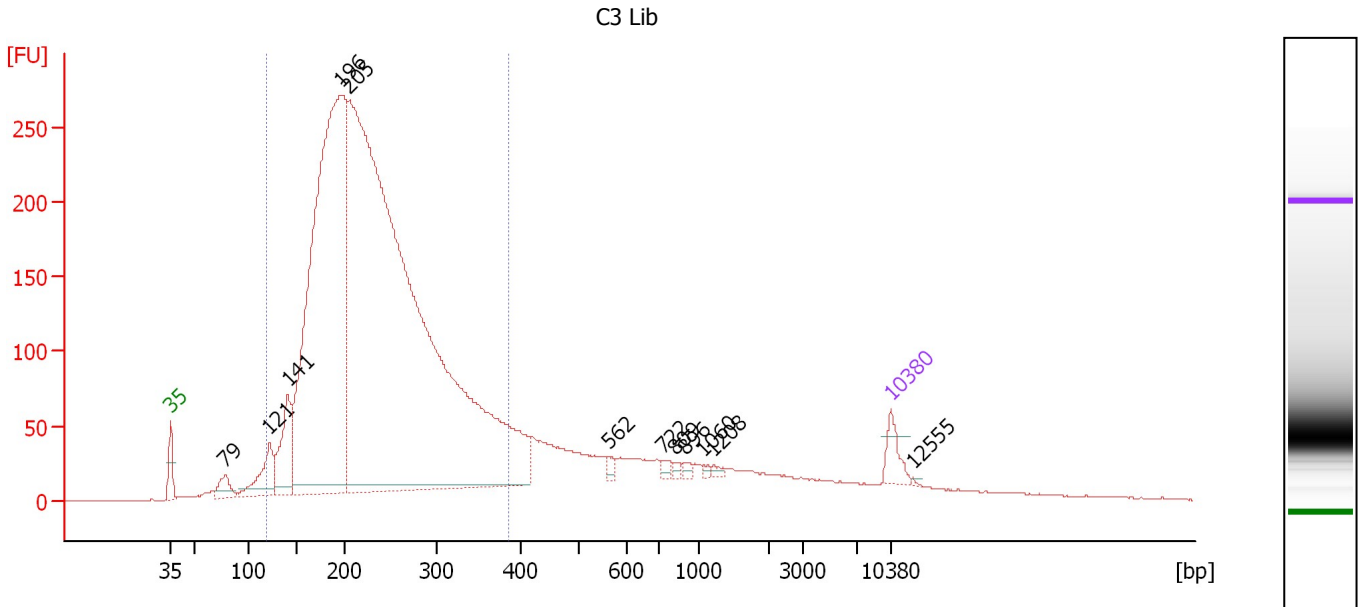
Region table for sample 6 : E21 Lib

From [bp]	To [bp]	Average Size [bp]	Molarity [pmol/l]	Conc. [pg/μl]	Corr. Area	% of Total	Size distribution in CV [%]	Color
112	401	237	75,101.2	10,730.34	4,652.0	86	25.4	Blue

Assay Class: High Sensitivity DNA Assay
 Data Path: C:\...ents and Settings\Bioanalyzer\2012-07-11\2012-07-11_002.xad

Created: 7/11/2012 10:09:40 AM
 Modified: 7/11/2012 10:55:51 AM

Electropherogram Summary Continued ...



Overall Results for sample 7 : C3 Lib

Number of peaks found: 12 Corr. Area 1: 5,166.3
 Noise: 0.2

Peak table for sample 7 : C3 Lib

Peak	Size [bp]	Conc. [pg/μl]	Molarity [pmol/l]	Observations
1	35	125.00	5,411.3	Lower Marker
2	79	103.40	1,993.7	
3	121	253.88	3,177.3	
4	141	371.68	4,001.7	
5	196	3,958.83	30,551.5	
6	205	7,766.41	57,275.1	
7	562	28.63	77.2	
8	722	21.38	44.9	
9	809	14.06	26.3	
10	896	18.23	30.8	
11	1,060	10.20	14.6	
12	1,208	13.98	17.5	
13	10,380	75.00	10.9	Upper Marker
14	12,555	0.00	0.0	

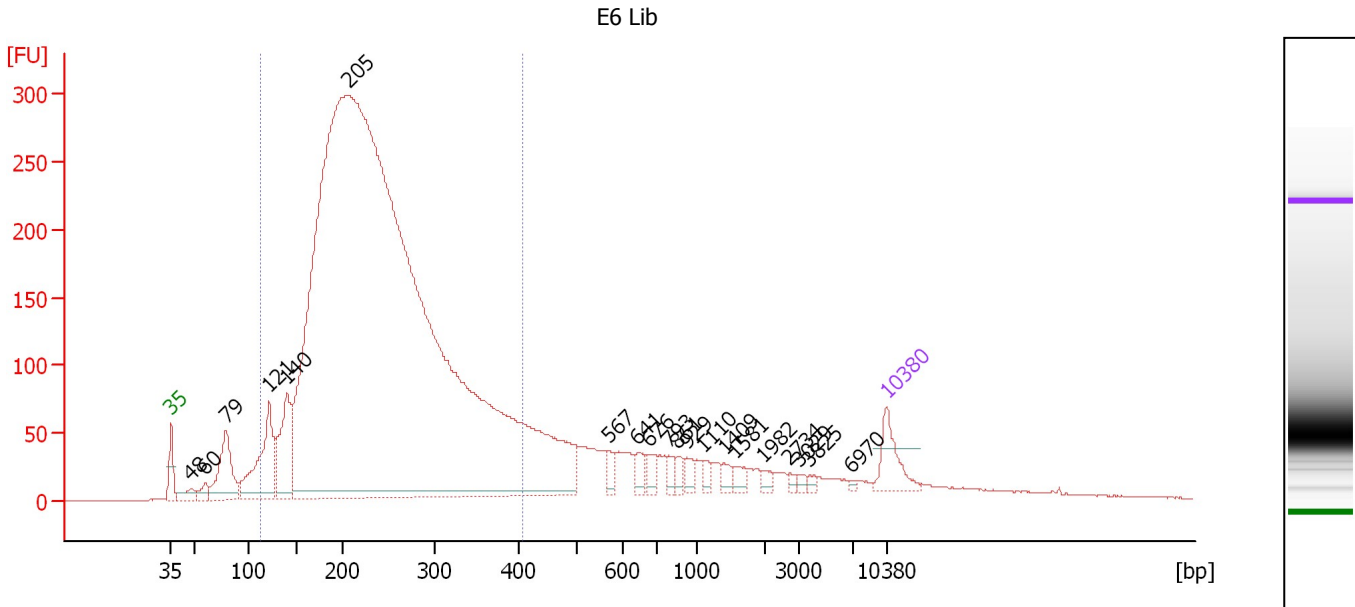
Region table for sample 7 : C3 Lib

From [bp]	To [bp]	Average Size [bp]	Molarity [pmol/l]	Conc. [pg/μl]	Corr. Area	% of Total	Size distribution in CV [%]	Color
117	384	233	82,922.2	11,730.19	5,166.3	81	25.1	Blue

Assay Class: High Sensitivity DNA Assay
 Data Path: C:\...ents and Settings\Bioanalyzer\2012-07-11\2012-07-11_002.xad

Created: 7/11/2012 10:09:40 AM
 Modified: 7/11/2012 10:55:51 AM

Electropherogram Summary Continued ...



Overall Results for sample 8 : E6 Lib

Number of peaks found: 20 Corr. Area 1: 6,020.2
 Noise: 0.4

Peak table for sample 8 : E6 Lib

Peak	Size [bp]	Conc. [pg/μl]	Molarity [pmol/l]	Observations
1	35	125.00	5,411.3	Lower Marker
2	48	44.23	1,391.5	
3	60	39.20	989.4	
4	79	241.06	4,626.2	
5	121	326.81	4,083.0	
6	140	268.22	2,903.9	
7	205	8,804.30	65,024.8	
8	567	29.84	79.8	
9	641	32.58	77.0	
10	676	29.97	67.2	
11	793	22.13	42.3	
12	861	22.20	39.1	
13	929	27.24	44.4	
14	1,110	19.08	26.0	
15	1,409	19.86	21.4	
16	1,581	22.61	21.7	
17	1,982	13.54	10.4	
18	2,734	8.97	5.0	
19	3,029	8.79	4.4	
20	3,825	9.14	3.6	
21	6,970	5.00	1.1	
22	10,380	75.00	10.9	Upper Marker

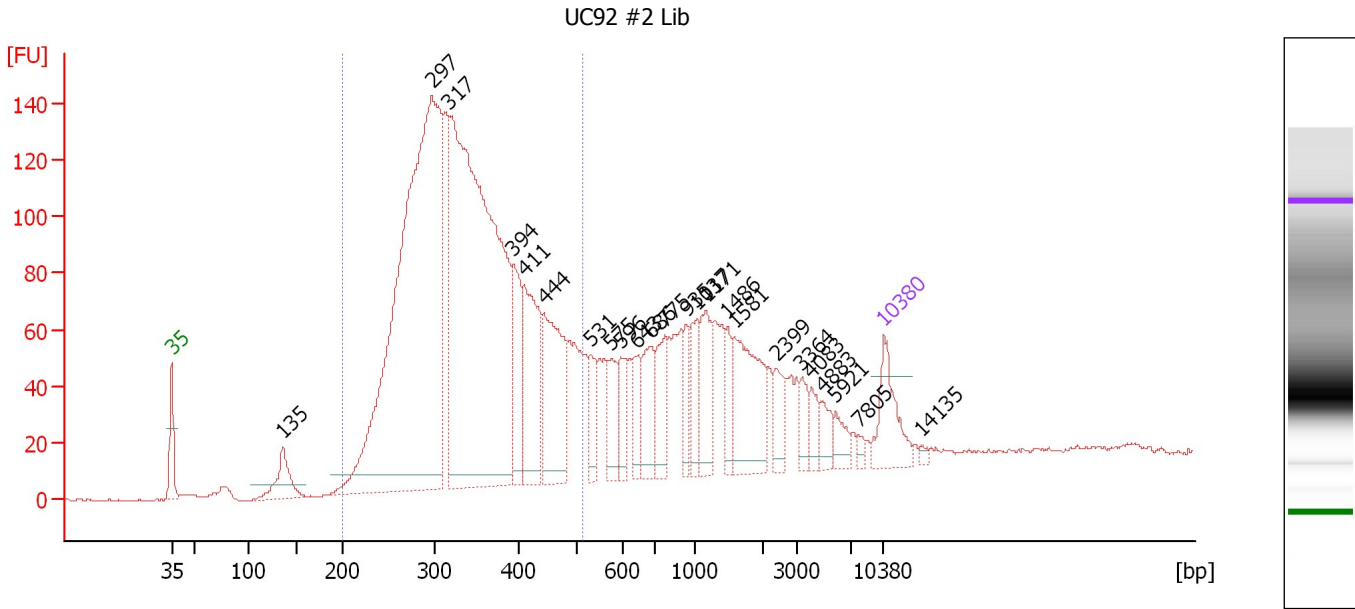
Region table for sample 8 : E6 Lib

From [bp]	To [bp]	Average Size [bp]	Molarity [pmol/l]	Conc. [pg/μl]	Corr. Area	% of Total	Size distribution in CV [%]	Color
111	408	239	57,653.6	8,224.52	6,020.2	80	26.9	Blue

Assay Class: High Sensitivity DNA Assay
 Data Path: C:\...ents and Settings\Bioanalyzer\2012-07-11\2012-07-11_002.xad

Created: 7/11/2012 10:09:40 AM
 Modified: 7/11/2012 10:55:51 AM

Electropherogram Summary Continued ...



Overall Results for sample 9 : UC92 #2 Lib

Number of peaks found: 24 Corr. Area 1: 2,430.7
 Noise: 0.3

Peak table for sample 9 : UC92 #2 Lib

Peak	Size [bp]	Conc. [pg/μl]	Molarity [pmol/l]	Observations
1	35	125.00	5,411.3	Lower Marker
2	135	91.50	1,024.7	
3	297	1,529.16	7,808.8	
4	317	1,396.20	6,662.9	
5	394	133.65	513.5	
6	411	217.96	803.2	
7	444	233.13	795.1	
8	531	57.80	164.8	
9	575	62.29	164.1	
10	596	54.46	138.5	
11	643	51.81	122.0	
12	686	88.58	195.5	
13	775	79.44	155.3	
14	935	45.31	73.4	
15	1,037	61.78	90.2	
16	1,171	82.51	106.7	
17	1,486	38.12	38.9	
18	1,581	156.22	149.7	
19	2,399	40.18	25.4	
20	3,364	29.80	13.4	
21	4,083	27.31	10.1	
22	4,883	27.94	8.7	
23	5,921	26.31	6.7	
24	7,805	9.12	1.8	
25	10,380	75.00	10.9	Upper Marker
26	14,135	0.00	0.0	

Assay Class: High Sensitivity DNA Assay
Data Path: C:\...ents and Settings\Bioanalyzer\2012-07-11\2012-07-11_002.xad

Created: 7/11/2012 10:09:40 AM
Modified: 7/11/2012 10:55:51 AM

Electropherogram Summary Continued ...

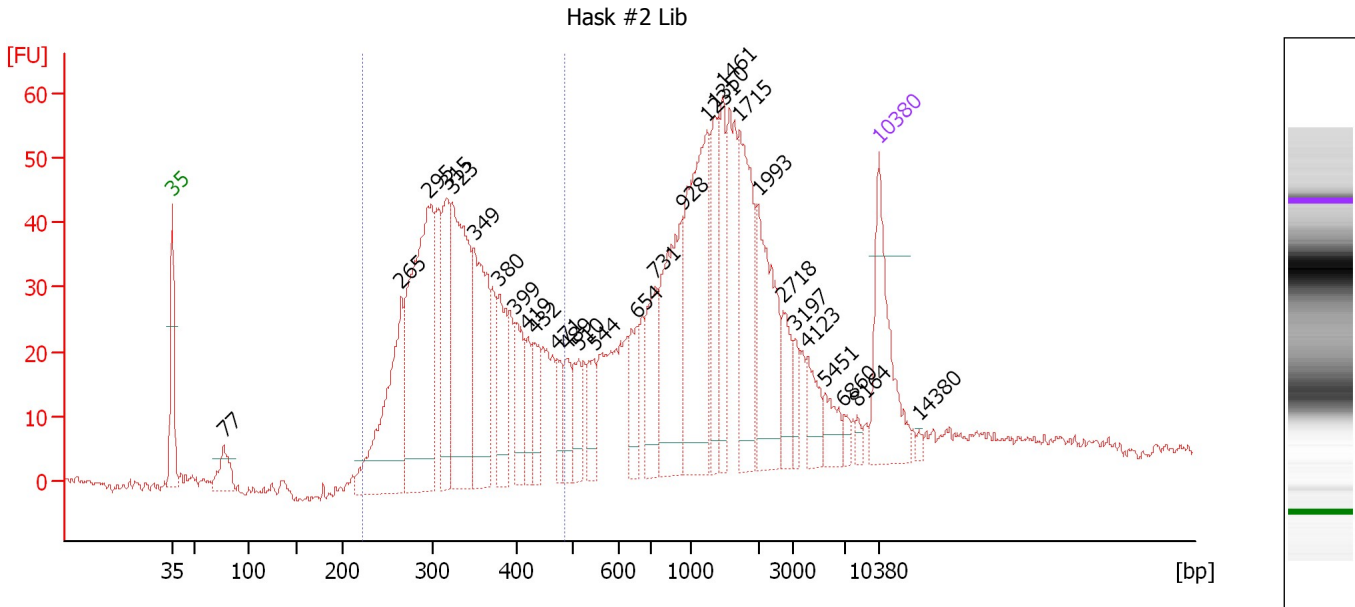
... Region table for sample 9 : UC92 #2 Lib

From [bp]	To [bp]	Average Size [bp]	Molarity [pmol/l]	Conc. [pg/μl]	Corr. Area	% of Total	Size distribution in CV [%]	Color
200	516	344	17,074.9	3,672.68	2,430.7	67	20.0	■

Assay Class: High Sensitivity DNA Assay
 Data Path: C:\...ents and Settings\Bioanalyzer\2012-07-11\2012-07-11_002.xad

Created: 7/11/2012 10:09:40 AM
 Modified: 7/11/2012 10:55:51 AM

Electropherogram Summary Continued ...



Overall Results for sample 10 : Hask #2 Lib

Number of peaks found: 29 Corr. Area 1: 696.7
 Noise: 0.7

Peak table for sample 10 : Hask #2 Lib

Peak	Size [bp]	Conc. [pg/μl]	Molarity [pmol/l]	Observations
1	35	125.00	5,411.3	Lower Marker
2	77	38.71	766.0	
3	265	167.44	958.0	
4	295	275.72	1,417.4	
5	315	93.11	447.1	
6	323	192.62	902.9	
7	349	136.26	591.5	
8	380	59.89	238.8	
9	399	46.56	176.6	
10	419	29.05	104.9	
11	432	34.39	120.5	
12	471	23.55	75.7	
13	489	28.50	88.3	
14	510	29.08	86.3	
15	544	29.35	81.7	
16	654	33.89	78.5	
17	731	58.12	120.5	
18	928	113.06	184.6	
19	1,231	161.04	198.2	
20	1,350	53.09	59.6	
21	1,461	49.53	51.4	
22	1,715	93.00	82.2	
23	1,993	89.53	68.1	
24	2,718	26.69	14.9	
25	3,197	14.05	6.7	
26	4,123	24.77	9.1	

Assay Class: High Sensitivity DNA Assay
 Data Path: C:\...ents and Settings\Bioanalyzer\2012-07-11\2012-07-11_002.xad


Created: 7/11/2012 10:09:40 AM
 Modified: 7/11/2012 10:55:51 AM

Electropherogram Summary Continued ...

... Peak table for sample 10 : Hask #2 Lib

Peak	Size [bp]	Conc. [pg/μl]	Molarity [pmol/l]	Observations
27	5,451	18.89	5.3	
28	6,860	6.56	1.4	
29	8,164	5.36	1.0	
30	10,380	75.00	10.9	Upper Marker
31	14,380	0.00	0.0	

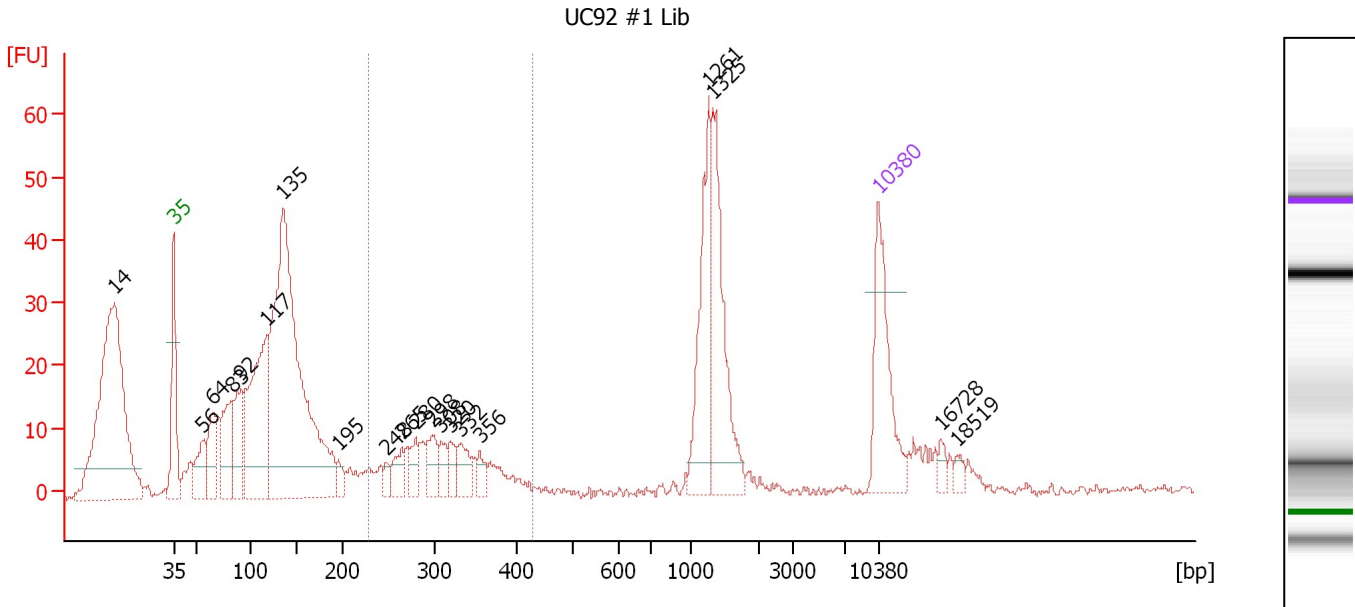
Region table for sample 10 : Hask #2 Lib

From [bp]	To [bp]	Average Size [bp]	Molarity [pmol/l]	Conc. [pg/μl]	Corr. Area	% of Total	Size distribution in CV [%]	Color
221	485	341	5,291.1	1,142.89	696.7	45	17.7	

Assay Class: High Sensitivity DNA Assay
 Data Path: C:\...ents and Settings\Bioanalyzer\2012-07-11\2012-07-11_002.xad

Created: 7/11/2012 10:09:40 AM
 Modified: 7/11/2012 10:55:51 AM

Electropherogram Summary Continued ...



Overall Results for sample 11 : UC92 #1 Lib

Number of peaks found: 20 Corr. Area 1: 124.0
 Noise: 0.6

Peak table for sample 11 : UC92 #1 Lib

Peak	Size [bp]	Conc. [pg/μl]	Molarity [pmol/l]	Observations
1	14	0.00	0.0	
2	35	125.00	5,411.3	Lower Marker
3	56	47.89	1,294.2	
4	64	54.89	1,290.7	
5	83	84.57	1,541.0	
6	92	72.12	1,193.9	
7	117	217.73	2,817.0	
8	135	569.59	6,396.7	
9	195	15.12	117.7	
10	248	10.24	62.7	
11	265	23.63	135.3	
12	280	21.33	115.5	
13	298	28.38	144.5	
14	308	18.74	92.1	
15	320	17.18	81.3	
16	332	26.19	119.4	
17	356	13.90	59.2	
18	1,261	102.59	123.3	
19	1,325	110.61	126.5	
20	10,380	75.00	10.9	Upper Marker
21	16,728	0.00	0.0	
22	18,519	0.00	0.0	

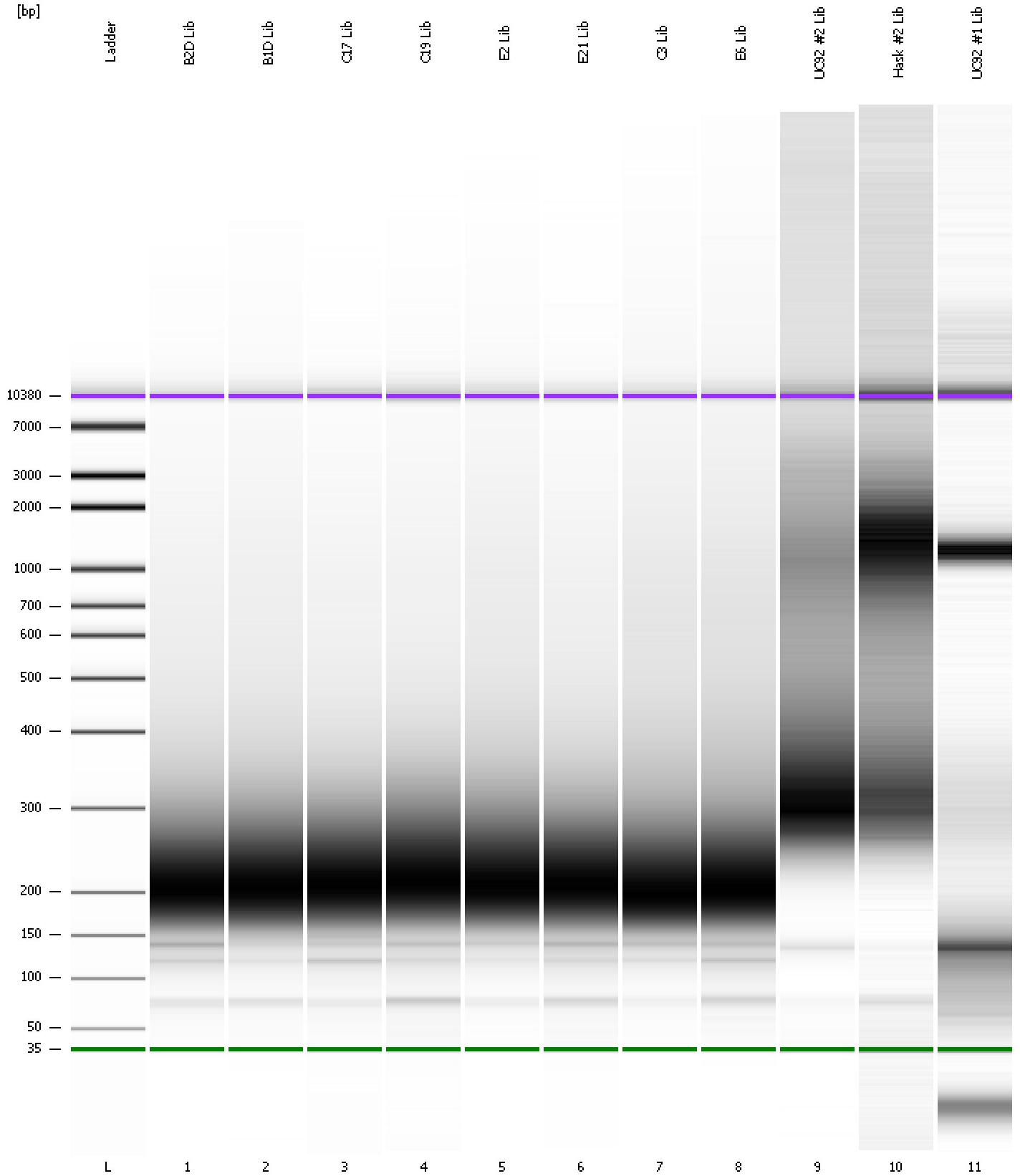
Region table for sample 11 : UC92 #1 Lib

From [bp]	To [bp]	Average Size [bp]	Molarity [pmol/l]	Conc. [pg/μl]	Corr. Area	% of Total	Size distribution in CV [%]	Color
228	429	310	1,107.8	220.71	124.0	12	14.5	Blue

Assay Class: High Sensitivity DNA Assay
Data Path: C:\...ents and Settings\Bioanalyzer\2012-07-11\2012-07-11_002.xad

Created: 7/11/2012 10:09:40 AM
Modified: 7/11/2012 10:55:51 AM

Gel Image



Assay Class: High Sensitivity DNA Assay
 Data Path: C:\...ents and Settings\Bioanalyzer\2012-07-11\2012-07-11_002.xad

Created: 7/11/2012 10:09:40 AM
 Modified: 7/11/2012 10:55:51 AM

Run Logbook

Description	Number	Source	Category	Sub Category	Time	Time Zone	User	Host
Run ended on port 1 (Number of wells acquired: 12)		Instrument	Run		7/11/2012 10:51:00 AM	(GMT --07:00) Pacific Standard Time	UC Davis	D8XSMGH1
Run started on port 1 (File: C:\Documents and Settings\Bioanalyzer\2012-07-11\2012-07-11_002.xad)		Instrument	Run		7/11/2012 10:09:45 AM	(GMT --07:00) Pacific Standard Time	UC Davis	D8XSMGH1
Product Number : G2938B		Instrument	Run		7/11/2012 10:09:45 AM	(GMT --07:00) Pacific Standard Time	UC Davis	D8XSMGH1
Name :		Instrument	Run		7/11/2012 10:09:45 AM	(GMT --07:00) Pacific Standard Time	UC Davis	D8XSMGH1
Vendor : Agilent Technologies		Instrument	Run		7/11/2012 10:09:45 AM	(GMT --07:00) Pacific Standard Time	UC Davis	D8XSMGH1
Serial# : DE13701086		Instrument	Run		7/11/2012 10:09:45 AM	(GMT --07:00) Pacific Standard Time	UC Davis	D8XSMGH1
Firmware : C.01.069		Instrument	Run		7/11/2012 10:09:45 AM	(GMT --07:00) Pacific Standard Time	UC Davis	D8XSMGH1
Cartridge : Electrode		Instrument	Run		7/11/2012 10:09:45 AM	(GMT --07:00) Pacific Standard Time	UC Davis	D8XSMGH1