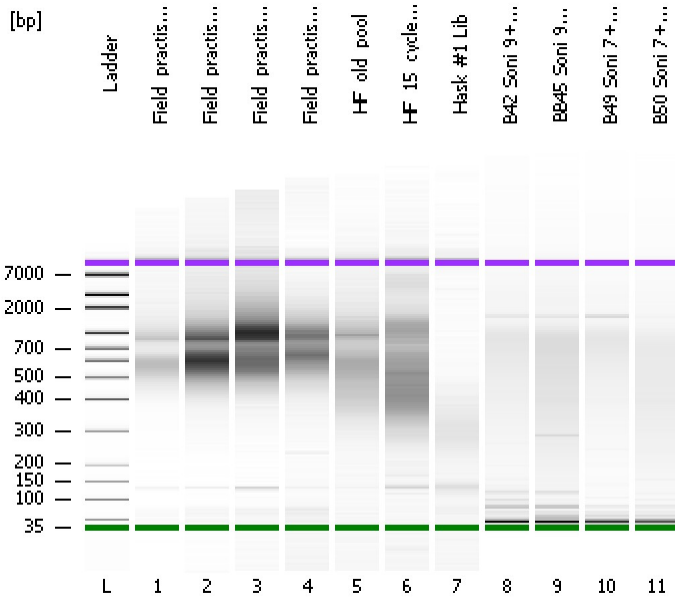


Assay Class: High Sensitivity DNA Assay
Data Path: C:\...ents and Settings\Bioanalyzer\2012-07-11\2012-07-11_004.xad

Created: 7/11/2012 12:28:19 PM
Modified: 7/11/2012 1:11:24 PM

Electrophoresis File Run Summary



Instrument Information:

Instrument Name: DE13701086 Firmware: C.01.069
Serial#: DE13701086 Type: G2938B

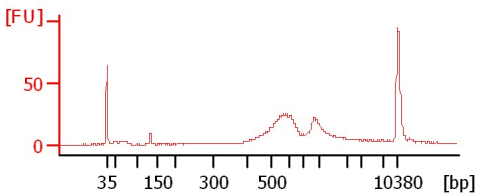
Assay Information:

Assay Origin Path: C:\Program Files\Agilent\2100 bioanalyzer\2100 expert\assays\dsDNA\High Sensitivity DNA.xsy
Assay Class: High Sensitivity DNA Assay
Version: 1.03
Assay Comments: Copyright © 2003-2010 Agilent Technologies

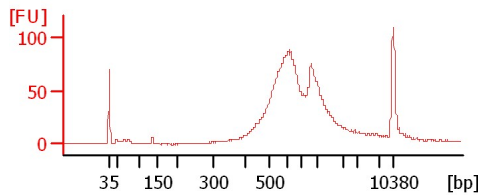
Chip Information:

Chip Lot #: Reagent Kit Lot #: Chip Comments:

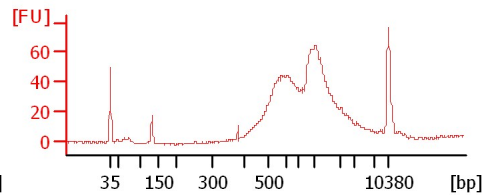
Field_practise_1



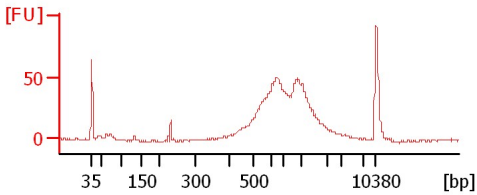
Field_practise_2



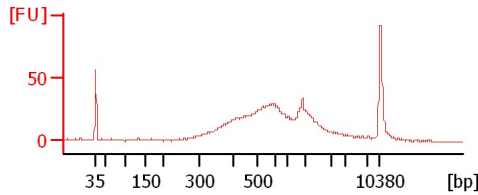
Field_practise_3



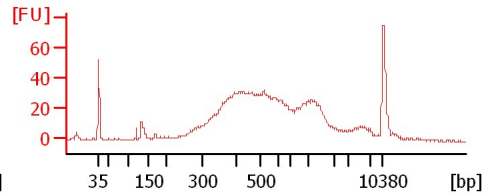
Field_practise_4



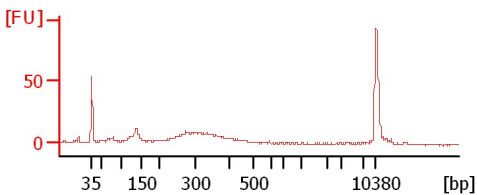
HF_old_pool



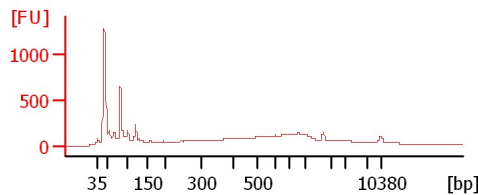
HF_15_cycles_pool



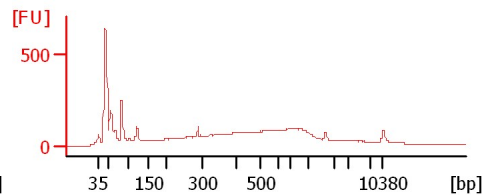
Hask #1 Lib



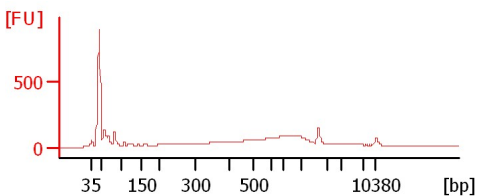
B42 Soni 9+4Cycles



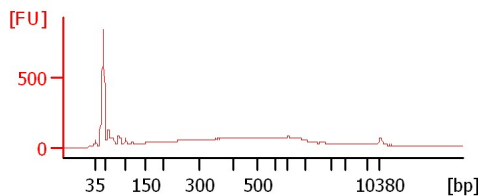
BB45 Soni 9+4Cycles



B49 Soni 7+4Cycles



B50 Soni 7+4Cycles



Assay Class: High Sensitivity DNA Assay
Data Path: C:\...ents and Settings\Bioanalyzer\2012-07-11\2012-07-11_004.xad

Created: 7/11/2012 12:28:19 PM
Modified: 7/11/2012 1:11:24 PM

Electrophoresis File Run Summary (Chip Summary)

Sample Name	Sample Comment	Rest. Digest	Status	Observation	Result Label	Result Color
Field_practise_1		<input type="checkbox"/>	✓			
Field_practise_2		<input type="checkbox"/>	✓			
Field_practise_3		<input type="checkbox"/>	✓			
Field_practise_4		<input type="checkbox"/>	✓			
HF_old_pool		<input type="checkbox"/>	✓			
HF_15_cycles_pool		<input type="checkbox"/>	✓			
Hask #1 Lib		<input type="checkbox"/>	✓			
B42 Soni 9+4Cycles		<input type="checkbox"/>	✓			
BB45 Soni 9+4Cycles		<input type="checkbox"/>	✓			
B49 Soni 7+4Cycles		<input type="checkbox"/>	✓			
B50 Soni 7+4Cycles		<input type="checkbox"/>	✓			
Ladder		<input type="checkbox"/>	✓			

Chip Lot #

Reagent Kit Lot #

Chip Comments :

Assay Class: High Sensitivity DNA Assay
Data Path: C:\...ents and Settings\Bioanalyzer\2012-07-11\2012-07-11_004.xad

Created: 7/11/2012 12:28:19 PM
Modified: 7/11/2012 1:11:24 PM

Electrophoresis Assay Details

General Analysis Settings

Number of Available Sample and Ladder Wells (Max.) : 12
Minimum Visible Range [s] : 32
Maximum Visible Range [s] : 138
Start Analysis Time Range [s] : 33
End Analysis Time Range [s] : 137.5
Ladder Concentration [pg/μl] : 1950
Uses Standard Area for Ladder Fragments
Lower Marker Concentration [pg/μl] : 125
Upper Marker Concentration [pg/μl] : 75
Used Upper Marker for Quantitation
Standard Curve Fit is Point to Point
Show Data Aligned to Lower and Upper Marker

Integrator Settings

Integration Start Time [s] : 33.05
Integration End Time [s] : 137
Slope Threshold : 0.8
Height Threshold [FU] : 5
Area Threshold : 0.1
Width Threshold [s] : 0.6
Baseline Plateau [s] : 0.5

Filter Settings

Filter Width [s] : 0.5
Polynomial Order : 4

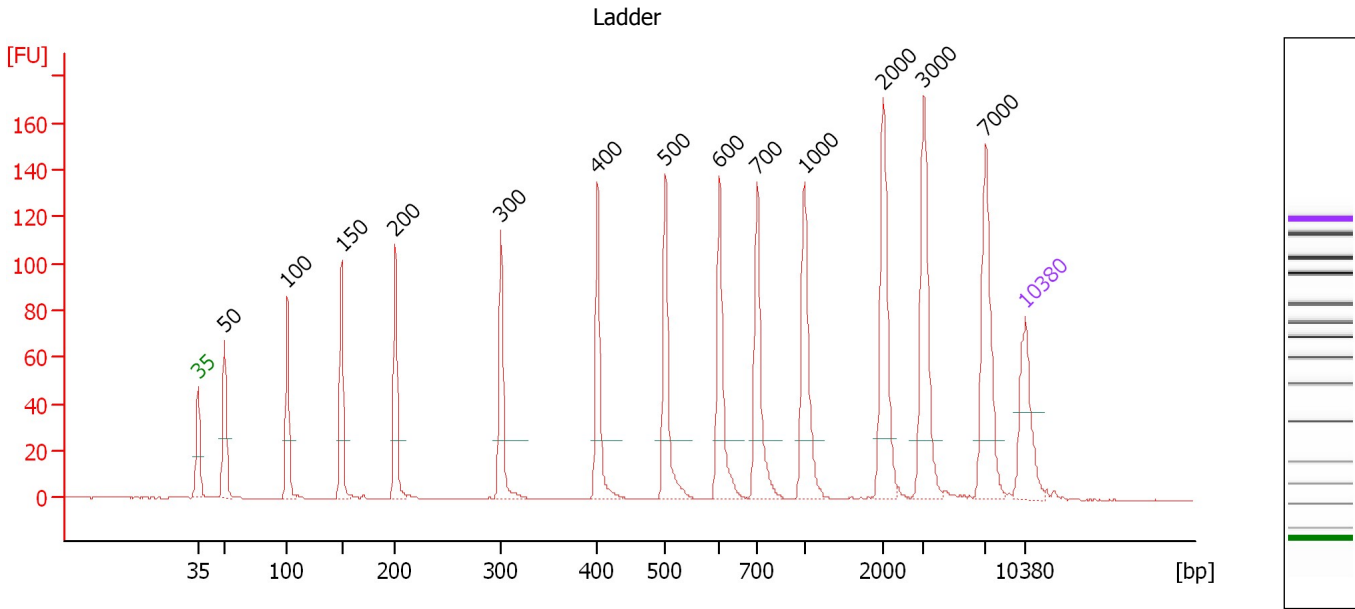
Ladder

Ladder Peak	Size	Area
1	35	160
2	50	210
3	100	208
4	150	221
5	200	242
6	300	270
7	400	305
8	500	306
9	600	336
10	700	321
11	1000	366
12	2000	413
13	3000	411
14	7000	400
15	10380	214

Assay Class: High Sensitivity DNA Assay
 Data Path: C:\...ents and Settings\Bioanalyzer\2012-07-11\2012-07-11_004.xad

Created: 7/11/2012 12:28:19 PM
 Modified: 7/11/2012 1:11:24 PM

Electropherogram Summary



Overall Results for Ladder

Noise: 0.2

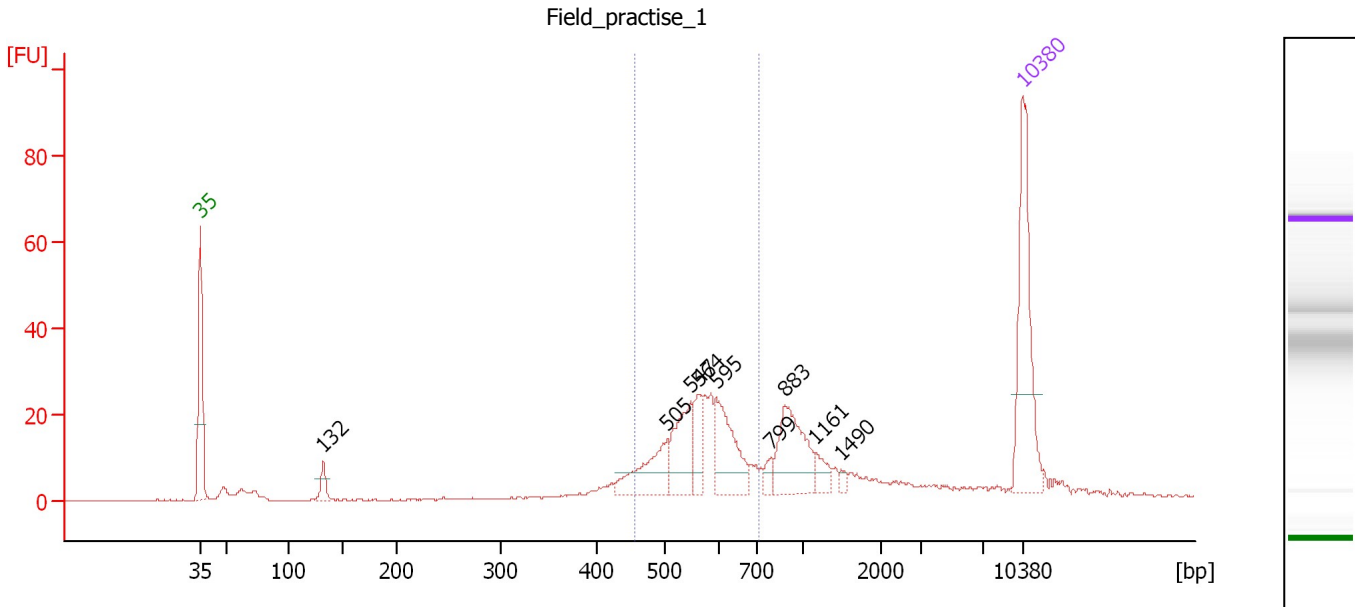
Peak table for Ladder

Peak	Size [bp]	Conc. [pg/μl]	Molarity [pmol/l]	Observations
1	35	125.00	5,411.3	Lower Marker
2	50	150.00	4,545.5	Ladder Peak
3	100	150.00	2,272.7	Ladder Peak
4	150	150.00	1,515.2	Ladder Peak
5	200	150.00	1,136.4	Ladder Peak
6	300	150.00	757.6	Ladder Peak
7	400	150.00	568.2	Ladder Peak
8	500	150.00	454.5	Ladder Peak
9	600	150.00	378.8	Ladder Peak
10	700	150.00	324.7	Ladder Peak
11	1,000	150.00	227.3	Ladder Peak
12	2,000	150.00	113.6	Ladder Peak
13	3,000	150.00	75.8	Ladder Peak
14	7,000	150.00	32.5	Ladder Peak
15	10,380	75.00	10.9	Upper Marker

Assay Class: High Sensitivity DNA Assay
 Data Path: C:\...ents and Settings\Bioanalyzer\2012-07-11\2012-07-11_004.xad

Created: 7/11/2012 12:28:19 PM
 Modified: 7/11/2012 1:11:24 PM

Electropherogram Summary Continued ...



Overall Results for sample 1 : Field_practise_1

Number of peaks found: 9 Corr. Area 1: 191.3
 Noise: 0.1

Peak table for sample 1 : Field_practise_1

Peak	Size [bp]	Conc. [pg/μl]	Molarity [pmol/l]	Observations
1	35	125.00	5,411.3	Lower Marker
2	132	13.68	157.0	
3	505	47.14	141.4	
4	547	46.68	129.2	
5	564	23.78	63.9	
6	595	51.22	130.5	
7	799	7.58	14.4	
8	883	56.75	97.3	
9	1,161	10.78	14.1	
10	1,490	3.26	3.3	
11	10,380	75.00	10.9	Upper Marker

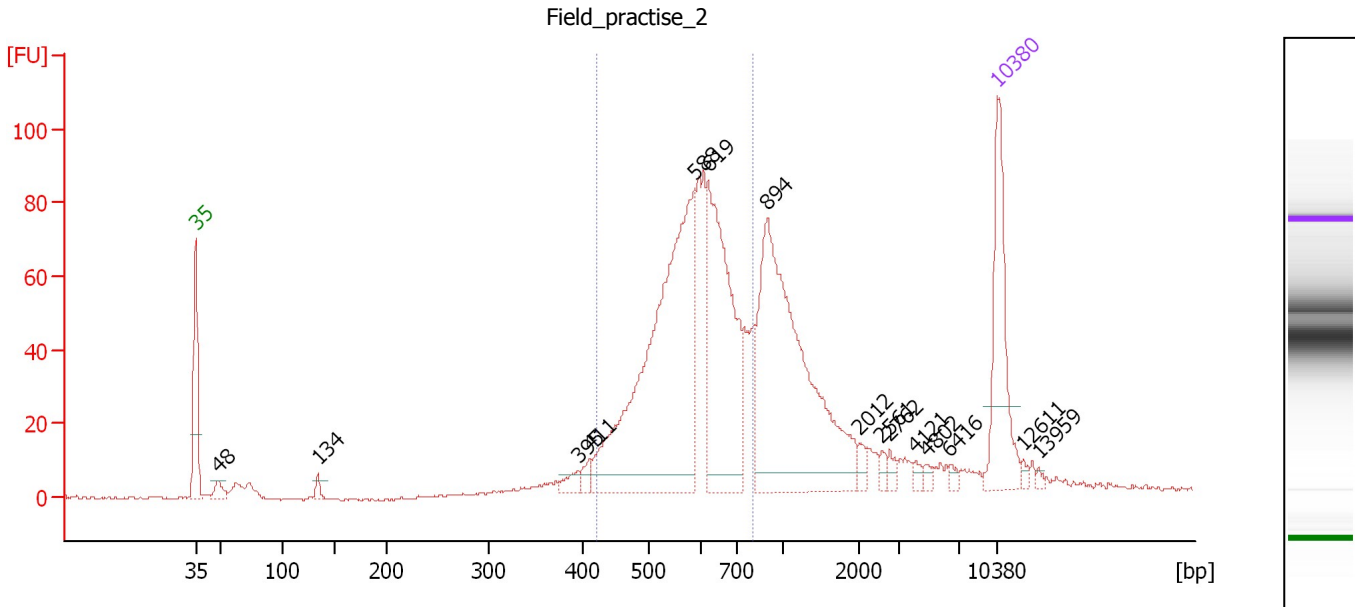
Region table for sample 1 : Field_practise_1

From [bp]	To [bp]	Average Size [bp]	Molarity [pmol/l]	Conc. [pg/μl]	Corr. Area	% of Total	Size distribution in CV [%]	Color
455	721	567	562.4	207.80	191.3	50	10.3	Blue

Assay Class: High Sensitivity DNA Assay
 Data Path: C:\...ents and Settings\Bioanalyzer\2012-07-11\2012-07-11_004.xad

Created: 7/11/2012 12:28:19 PM
 Modified: 7/11/2012 1:11:24 PM

Electropherogram Summary Continued ...



Overall Results for sample 2 : Field practise 2

Number of peaks found: 15 Corr. Area 1: 812.1
 Noise: 0.4

Peak table for sample 2 : Field practise 2

Peak	Size [bp]	Conc. [pg/µl]	Molarity [pmol/l]	Observations
1	35	125.00	5,411.3	Lower Marker
2	48	12.47	391.4	
3	134	7.09	80.3	
4	395	10.57	40.6	
5	411	8.83	32.5	
6	588	359.59	927.4	
7	619	192.75	472.1	
8	894	296.37	502.4	
9	2,012	6.68	5.0	
10	2,561	4.69	2.8	
11	2,762	5.73	3.1	
12	4,121	4.26	1.6	
13	4,802	3.49	1.1	
14	6,416	3.61	0.9	
15	10,380	75.00	10.9	Upper Marker
16	12,611	0.00	0.0	
17	13,959	0.00	0.0	

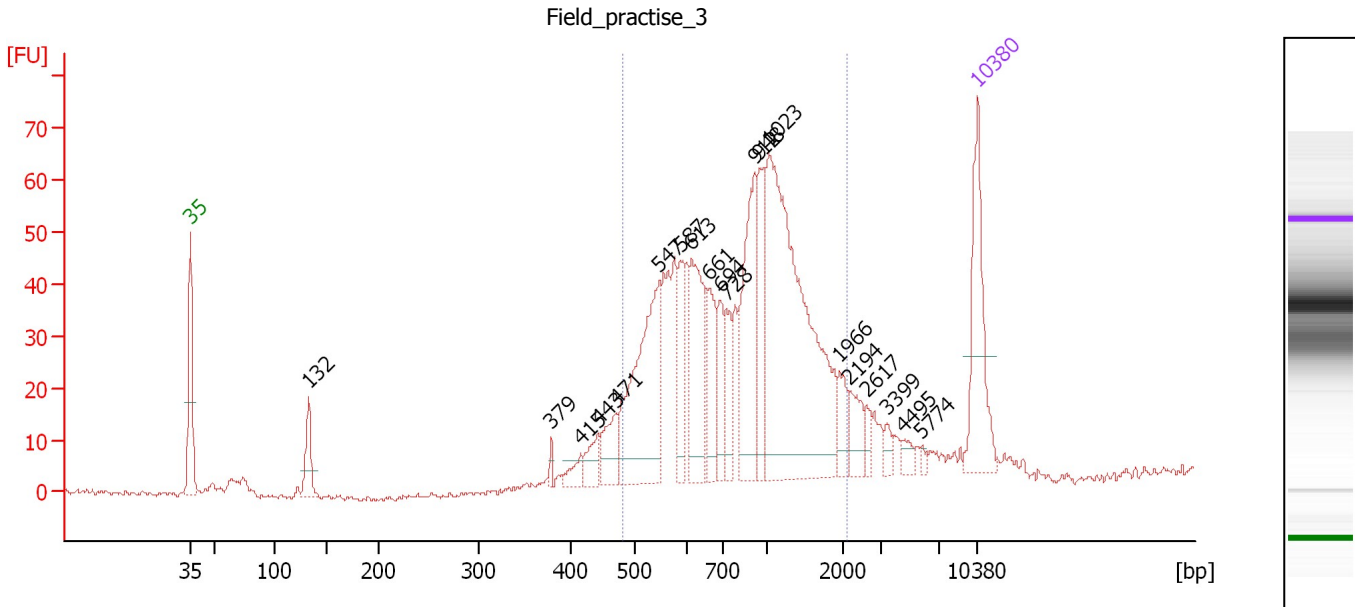
Region table for sample 2 : Field practise 2

From [bp]	To [bp]	Average Size [bp]	Molarity [pmol/l]	Conc. [pg/µl]	Corr. Area	% of Total	Size distribution in CV [%]	Color
422	804	589	1,865.0	706.82	812.1	59	13.9	Blue

Assay Class: High Sensitivity DNA Assay
 Data Path: C:\...ents and Settings\Bioanalyzer\2012-07-11\2012-07-11_004.xad

Created: 7/11/2012 12:28:19 PM
 Modified: 7/11/2012 1:11:24 PM

Electropherogram Summary Continued ...



Overall Results for sample 3 : Field practise 3

Number of peaks found: 20 Corr. Area 1: 821.7
 Noise: 0.5

Peak table for sample 3 : Field practise 3

Peak	Size [bp]	Conc. [pg/µl]	Molarity [pmol/l]	Observations
1	35	125.00	5,411.3	Lower Marker
2	132	39.45	451.4	
3	379	5.18	20.7	
4	415	14.15	51.6	
5	443	21.68	74.2	
6	471	35.04	112.7	
7	547	168.39	466.3	
8	587	41.62	107.4	
9	613	93.10	230.1	
10	661	48.36	110.9	
11	694	38.04	83.1	
12	728	31.09	64.7	
13	912	111.25	184.7	
14	948	50.42	80.6	
15	1,023	329.74	488.3	
16	1,966	20.67	15.9	
17	2,194	23.63	16.3	
18	2,617	8.59	5.0	
19	3,399	7.32	3.3	
20	4,495	7.40	2.5	
21	5,774	3.15	0.8	
22	10,380	75.00	10.9	Upper Marker

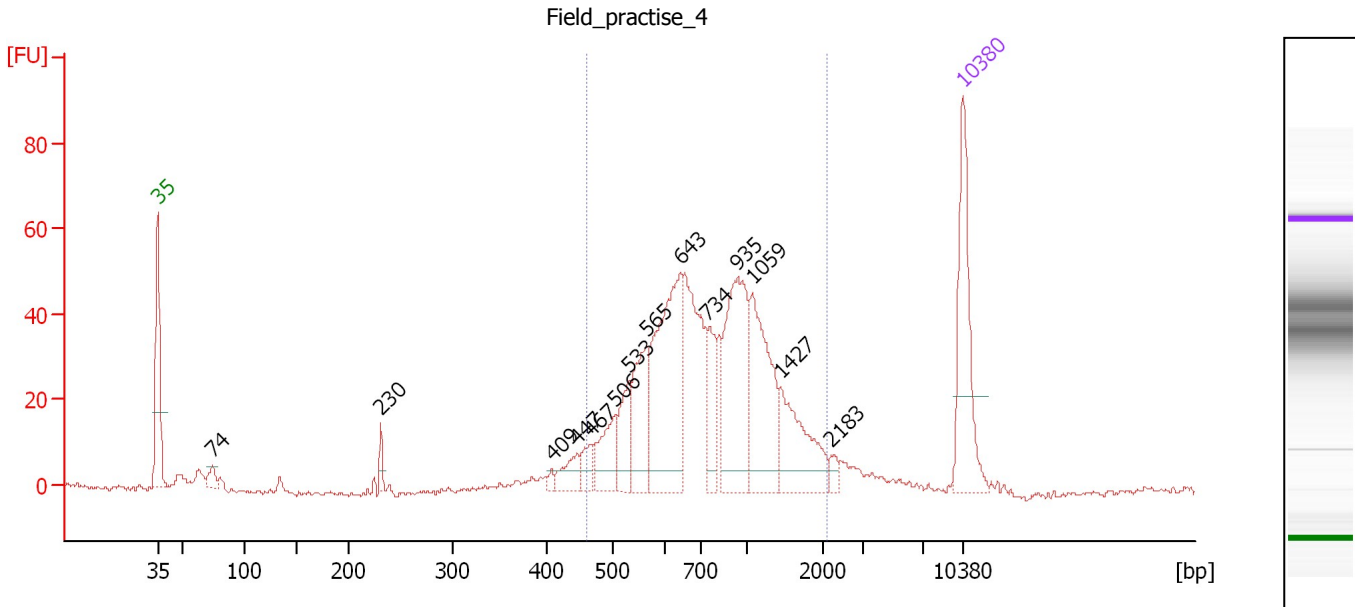
Region table for sample 3 : Field practise 3

From [bp]	To [bp]	Average Size [bp]	Molarity [pmol/l]	Conc. [pg/µl]	Corr. Area	% of Total	Size distribution in CV [%]	Color
481	2,128	938	2,099.0	1,071.85	821.7	83	42.9	Blue

Assay Class: High Sensitivity DNA Assay
 Data Path: C:\...ents and Settings\Bioanalyzer\2012-07-11\2012-07-11_004.xad

Created: 7/11/2012 12:28:19 PM
 Modified: 7/11/2012 1:11:24 PM

Electropherogram Summary Continued ...



Overall Results for sample 4 : Field practise 4

Number of peaks found: 14 Corr. Area 1: 699.3
 Noise: 0.6

Peak table for sample 4 : Field practise 4

Peak	Size [bp]	Conc. [pg/µl]	Molarity [pmol/l]	Observations
1	35	125.00	5,411.3	Lower Marker
2	74	12.82	262.1	
3	230	10.83	71.2	
4	409	4.21	15.6	
5	447	21.15	71.7	
6	467	15.24	49.4	
7	506	39.03	116.9	
8	533	36.97	105.0	
9	565	60.65	162.6	
10	643	149.47	352.0	
11	734	42.10	86.9	
12	935	118.36	191.9	
13	1,059	95.54	136.7	
14	1,427	62.35	66.2	
15	2,183	6.18	4.3	
16	10,380	75.00	10.9	Upper Marker

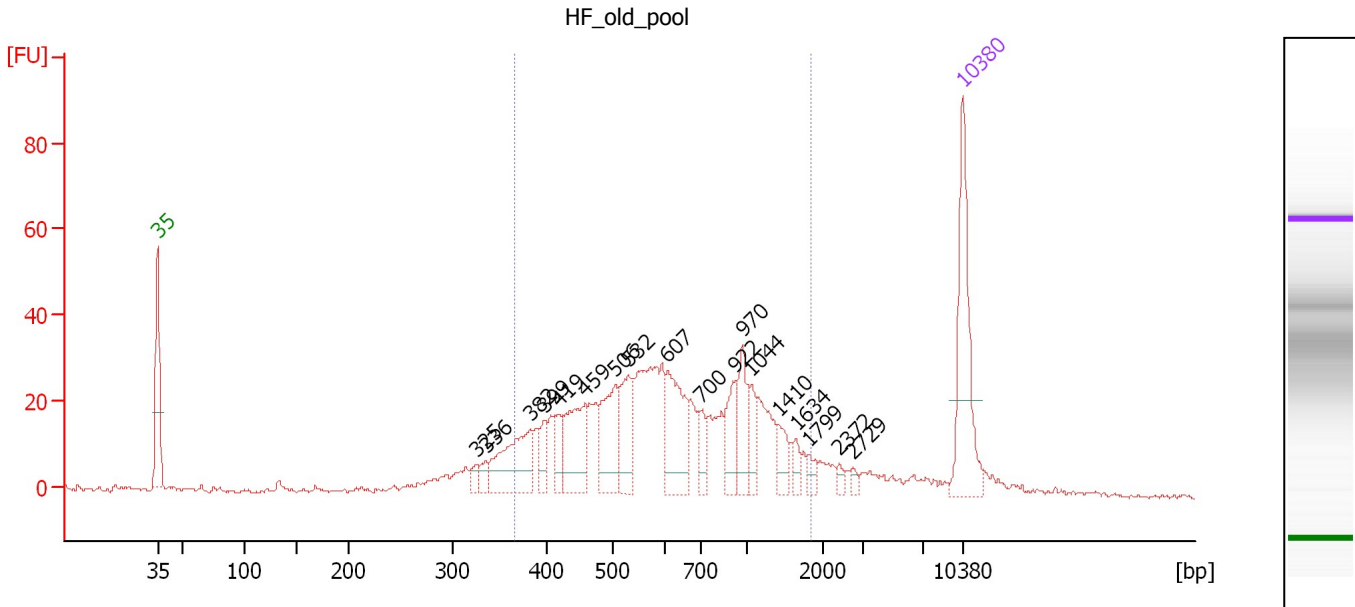
Region table for sample 4 : Field practise 4

From [bp]	To [bp]	Average Size [bp]	Molarity [pmol/l]	Conc. [pg/µl]	Corr. Area	% of Total	Size distribution in CV [%]	Color
462	2,063	861	1,503.8	729.38	699.3	87	40.7	Blue

Assay Class: High Sensitivity DNA Assay
 Data Path: C:\...ents and Settings\Bioanalyzer\2012-07-11\2012-07-11_004.xad

Created: 7/11/2012 12:28:19 PM
 Modified: 7/11/2012 1:11:24 PM

Electropherogram Summary Continued ...



Overall Results for sample 5 : HF_old_pool

Number of peaks found: 18 Corr. Area 1: 604.0
 Noise: 0.6

Peak table for sample 5 : HF_old_pool

Peak	Size [bp]	Conc. [pg/μl]	Molarity [pmol/l]	Observations
1	35	125.00	5,411.3	Lower Marker
2	325	7.89	36.7	
3	336	9.32	42.0	
4	382	71.02	281.3	
5	399	19.12	72.6	
6	419	20.99	75.9	
7	459	62.07	204.9	
8	506	56.32	168.7	
9	532	45.52	129.7	
10	607	63.56	158.6	
11	700	16.77	36.3	
12	922	30.10	49.5	
13	970	30.14	47.1	
14	1,044	18.06	26.2	
15	1,410	15.20	16.3	
16	1,634	8.37	7.8	
17	1,799	6.74	5.7	
18	2,372	3.99	2.5	
19	2,729	3.87	2.2	
20	10,380	75.00	10.9	Upper Marker

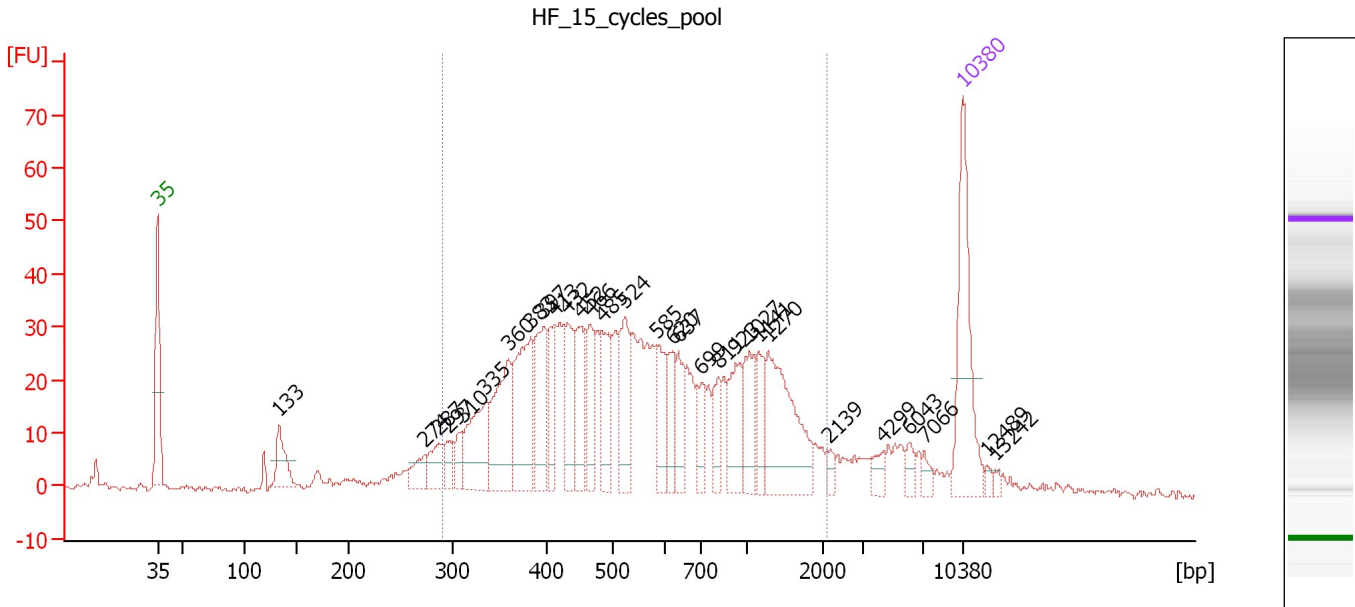
Region table for sample 5 : HF_old_pool

From [bp]	To [bp]	Average Size [bp]	Molarity [pmol/l]	Conc. [pg/μl]	Corr. Area	% of Total	Size distribution in CV [%]	Color
366	1,822	714	1,764.9	679.11	604.0	82	46.0	Blue

Assay Class: High Sensitivity DNA Assay
 Data Path: C:\...ents and Settings\Bioanalyzer\2012-07-11\2012-07-11_004.xad

Created: 7/11/2012 12:28:19 PM
 Modified: 7/11/2012 1:11:24 PM

Electropherogram Summary Continued ...



Overall Results for sample 6 : HF 15 cycles pool

Number of peaks found: 30 Corr. Area 1: 938.6
 Noise: 0.7

Peak table for sample 6 : HF 15 cycles pool

Peak	Size [bp]	Conc. [pg/μl]	Molarity [pmol/l]	Observations
1	35	125.00	5,411.3	Lower Marker
2	133	37.81	431.2	
3	274	19.57	108.3	
4	287	24.10	127.4	
5	297	17.47	89.2	
6	310	15.93	77.9	
7	335	63.37	286.9	
8	360	83.17	350.2	
9	383	93.01	367.7	
10	397	60.53	231.1	
11	413	36.17	132.7	
12	432	49.63	174.0	
13	452	48.35	162.2	
14	466	37.25	121.0	
15	485	45.75	143.0	
16	524	50.87	147.2	
17	585	33.99	88.0	
18	620	26.74	65.4	
19	637	29.28	69.6	
20	699	19.49	42.2	
21	811	22.80	42.6	
22	923	37.61	61.7	
23	1,027	34.75	51.3	
24	1,141	23.52	31.2	
25	1,270	90.86	108.4	
26	2,139	5.75	4.1	

Assay Class: High Sensitivity DNA Assay
 Data Path: C:\...ents and Settings\Bioanalyzer\2012-07-11\2012-07-11_004.xad


Created: 7/11/2012 12:28:19 PM
 Modified: 7/11/2012 1:11:24 PM

Electropherogram Summary Continued ...

... Peak table for sample 6 : HF 15 cycles pool

Peak	Size [bp]	Conc. [pg/μl]	Molarity [pmol/l]	Observations
27	4,299	8.78	3.1	
28	6,043	7.98	2.0	
29	7,066	6.60	1.4	
30	10,380	75.00	10.9	Upper Marker
31	12,489	0.00	0.0	
32	13,242	0.00	0.0	

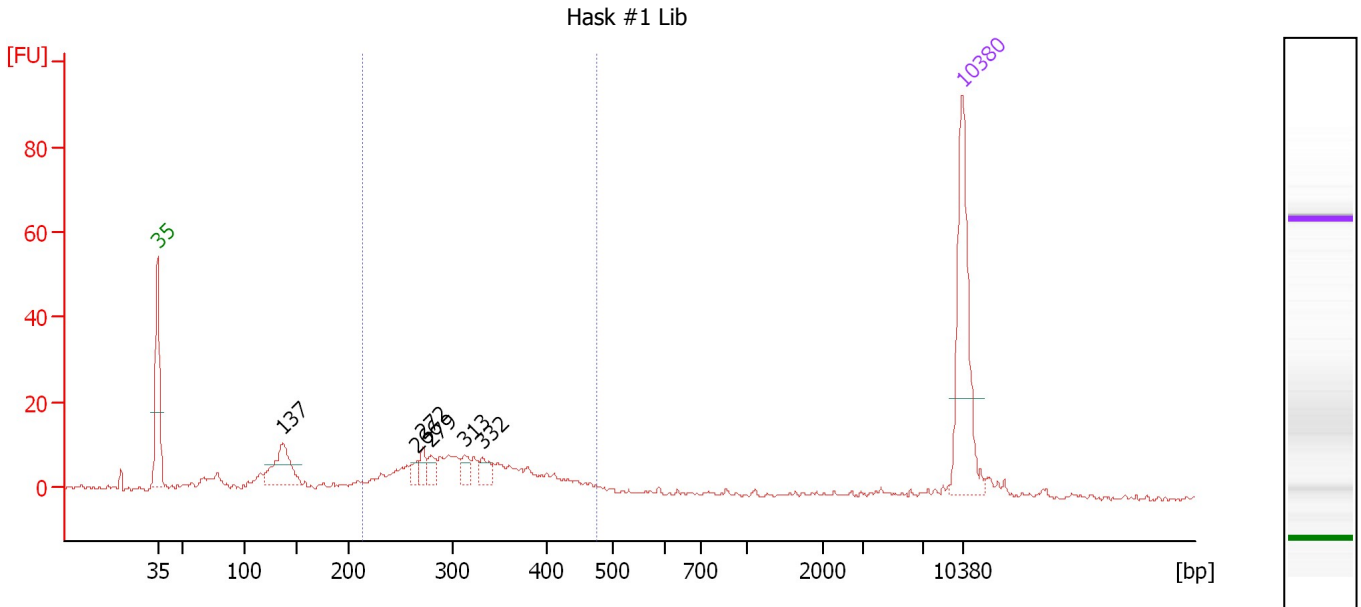
Region table for sample 6 : HF 15 cycles pool

From [bp]	To [bp]	Average Size [bp]	Molarity [pmol/l]	Conc. [pg/μl]	Corr. Area	% of Total	Size distribution in CV [%]	Color
291	2,101	671	3,764.2	1,251.72	938.6	81	56.9	

Assay Class: High Sensitivity DNA Assay
 Data Path: C:\...ents and Settings\Bioanalyzer\2012-07-11\2012-07-11_004.xad

Created: 7/11/2012 12:28:19 PM
 Modified: 7/11/2012 1:11:24 PM

Electropherogram Summary Continued ...



Overall Results for sample 7 : Hask #1 Lib

Number of peaks found: 6 Corr. Area 1: 154.3
 Noise: 0.4

Peak table for sample 7 : Hask #1 Lib

Peak	Size [bp]	Conc. [pg/μl]	Molarity [pmol/l]	Observations
1	35	125.00	5,411.3	Lower Marker
2	137	49.35	547.8	
3	266	7.39	42.1	
4	272	10.00	55.8	
5	279	9.64	52.4	
6	313	10.08	48.8	
7	332	10.53	48.0	
8	10,380	75.00	10.9	Upper Marker

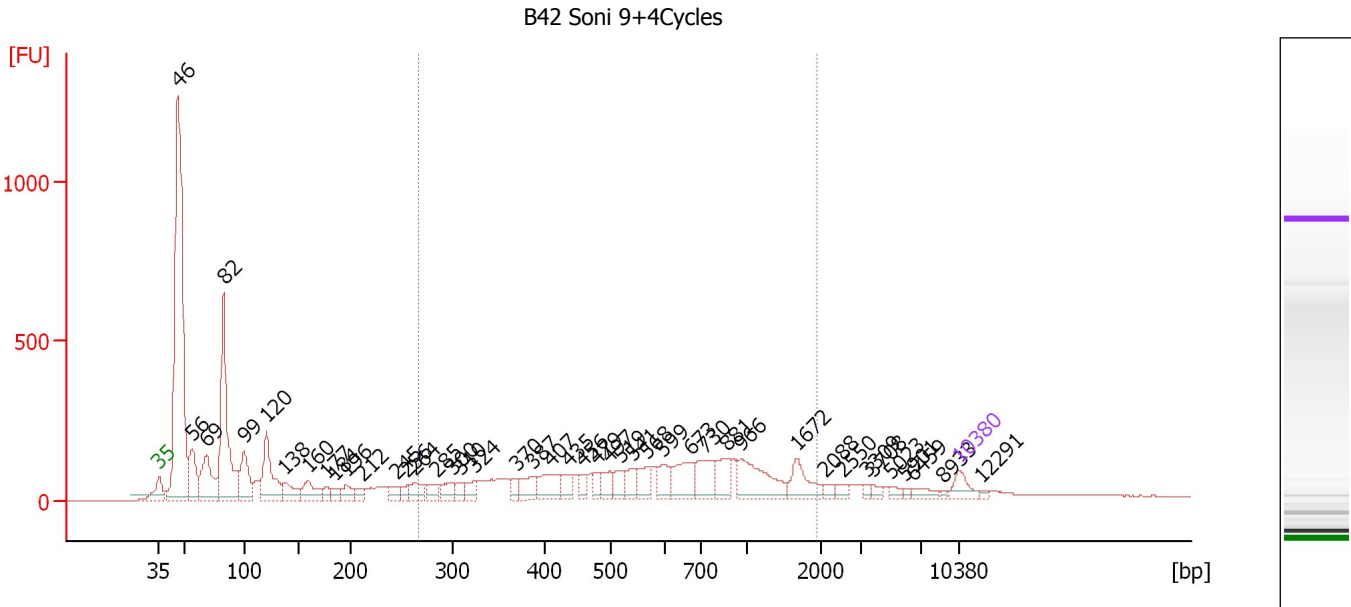
Region table for sample 7 : Hask #1 Lib

From [bp]	To [bp]	Average Size [bp]	Molarity [pmol/l]	Conc. [pg/μl]	Corr. Area	% of Total	Size distribution in CV [%]	Color
213	476	323	960.0	195.37	154.3	59	18.5	Blue

Assay Class: High Sensitivity DNA Assay
 Data Path: C:\...ents and Settings\Bioanalyzer\2012-07-11\2012-07-11_004.xad

Created: 7/11/2012 12:28:19 PM
 Modified: 7/11/2012 1:11:24 PM

Electropherogram Summary Continued ...



Setpoint Deviations for sample 8 : B42 Soni 9+4Cycles

Height Threshold [FU] : 15

Overall Results for sample 8 : B42 Soni 9+4Cycles

Number of peaks found: 44 Corr. Area 1: 3,388.7
 Noise: 0.6

Peak table for sample 8 : B42 Soni 9+4Cycles


Peak	Size [bp]	Conc. [pg/μl]	Molarity [pmol/l]	Observations
1	35	125.00	5,411.3	Lower Marker
2	46	2,952.68	96,772.8	
3	56	333.78	8,960.7	
4	69	444.17	9,812.8	
5	82	1,132.12	20,872.1	
6	99	328.98	5,025.5	
7	120	469.28	5,905.1	
8	138	165.34	1,817.5	
9	160	177.55	1,683.0	
10	177	60.13	515.1	
11	184	58.31	479.5	
12	196	86.45	667.7	
13	212	71.04	508.4	
14	245	76.16	470.4	
15	256	48.95	289.4	
16	264	109.21	627.2	
17	285	75.96	403.5	
18	300	93.07	470.5	
19	310	62.25	304.4	
20	324	80.29	375.0	
21	370	54.43	222.9	
22	387	128.99	504.9	

Assay Class: High Sensitivity DNA Assay
 Data Path: C:\...ents and Settings\Bioanalyzer\2012-07-11\2012-07-11_004.xad


Created: 7/11/2012 12:28:19 PM
 Modified: 7/11/2012 1:11:24 PM

Electropherogram Summary Continued ...

... Peak table for sample 8 : B42 Soni 9+4Cycles

Peak	Size [bp]	Conc. [pg/µl]	Molarity [pmol/l]	Observations
23	407	188.29	701.2	
24	435	82.76	288.4	
25	456	58.92	196.0	
26	479	66.52	210.4	
27	497	86.67	264.2	
28	519	92.11	269.0	
29	541	104.80	293.3	
30	568	114.64	305.6	
31	599	121.10	306.5	
32	673	210.84	474.4	
33	730	191.55	397.5	
34	881	158.56	272.8	
35	966	303.96	476.8	
36	1,672	152.42	138.1	
37	2,088	26.41	19.2	
38	2,550	33.55	19.9	
39	3,309	18.49	8.5	
40	3,708	25.12	10.3	
41	5,023	25.06	7.6	
42	5,901	14.48	3.7	
43	6,459	43.30	10.2	
44	8,933	10.00	1.7	
45	 10,380	75.00	10.9	Upper Marker
46	12,291	0.00	0.0	

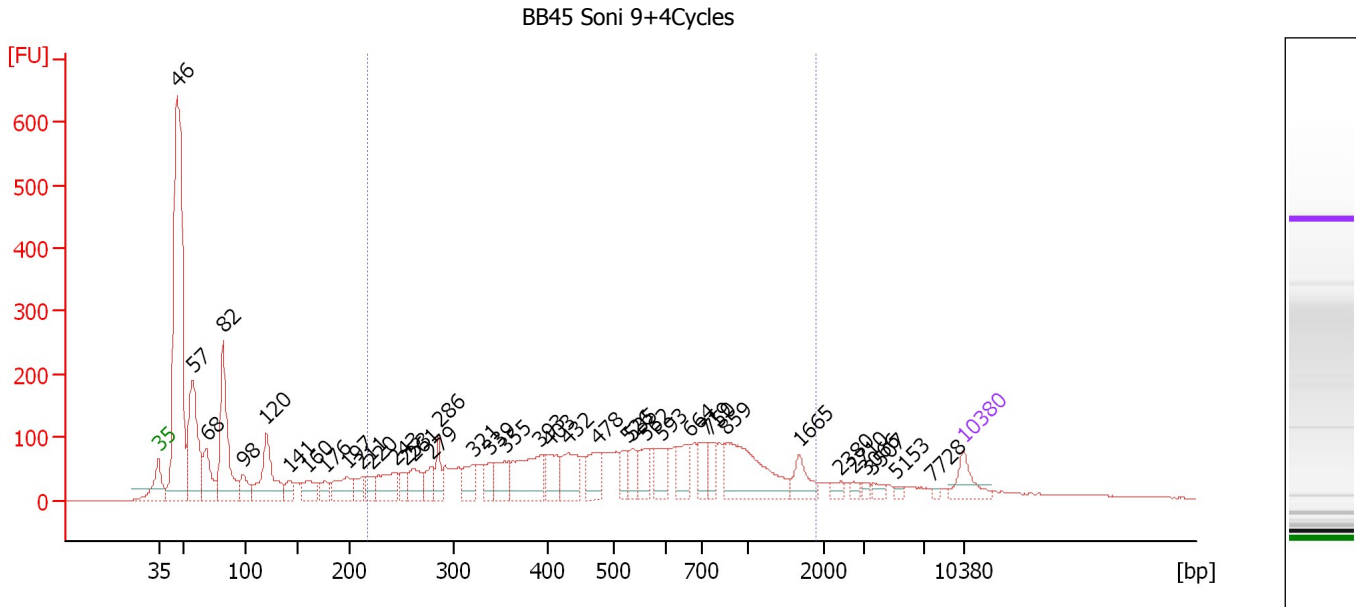
Region table for sample 8 : B42 Soni 9+4Cycles

From [bp]	To [bp]	Average Size [bp]	Molarity [pmol/l]	Conc. [pg/µl]	Corr. Area	% of Total	Size distribution in CV [%]	Color
267	1,926	695	8,935.6	2,966.04	3,388.7	37	55.6	

Assay Class: High Sensitivity DNA Assay
 Data Path: C:\...ents and Settings\Bioanalyzer\2012-07-11\2012-07-11_004.xad

Created: 7/11/2012 12:28:19 PM
 Modified: 7/11/2012 1:11:24 PM

Electropherogram Summary Continued ...



Setpoint Deviations for sample 9 : BB45 Soni 9+4Cycles

Height Threshold [FU] : 15

Overall Results for sample 9 : BB45 Soni 9+4Cycles

Number of peaks found: 39 Corr. Area 1: 3,071.8
 Noise: 0.6

Peak table for sample 9 : BB45 Soni 9+4Cycles

Peak	Size [bp]	Conc. [pg/μl]	Molarity [pmol/l]	Observations
1	35	125.00	5,411.3	Lower Marker
2	46	1,836.30	60,548.3	
3	57	549.05	14,566.6	
4	68	207.92	4,608.6	
5	82	541.09	9,992.0	
6	98	103.39	1,595.5	
7	120	333.11	4,207.3	
8	141	64.60	691.9	
9	160	93.84	890.6	
10	176	57.62	495.4	
11	197	133.41	1,027.2	
12	211	63.05	452.1	
13	220	61.77	425.3	
14	243	149.83	932.9	
15	253	57.72	346.1	
16	261	107.22	621.4	
17	279	86.49	469.9	
18	286	83.31	441.5	
19	321	98.76	466.3	
20	339	75.06	335.1	
21	355	110.74	472.2	
22	393	247.08	952.7	

Assay Class: High Sensitivity DNA Assay
 Data Path: C:\...ents and Settings\Bioanalyzer\2012-07-11\2012-07-11_004.xad

Created: 7/11/2012 12:28:19 PM
 Modified: 7/11/2012 1:11:24 PM

Electropherogram Summary Continued ...

... Peak table for sample 9 : BB45 Soni 9+4Cycles

Peak	Size [bp]	Conc. [pg/µl]	Molarity [pmol/l]	Observations
23	403	118.79	446.9	
24	432	158.31	555.5	
25	478	123.99	392.9	
26	526	64.84	186.8	
27	535	74.67	211.5	
28	562	90.44	243.8	
29	593	96.90	247.7	
30	664	105.93	241.9	
31	719	91.60	193.0	
32	750	61.79	124.8	
33	859	340.54	600.7	
34	1,665	76.46	69.6	
35	2,380	23.54	15.0	
36	2,710	16.90	9.5	
37	3,066	13.43	6.6	
38	3,507	21.45	9.3	
39	5,153	12.79	3.8	
40	7,728	8.94	1.8	
41	10,380	75.00	10.9	Upper Marker

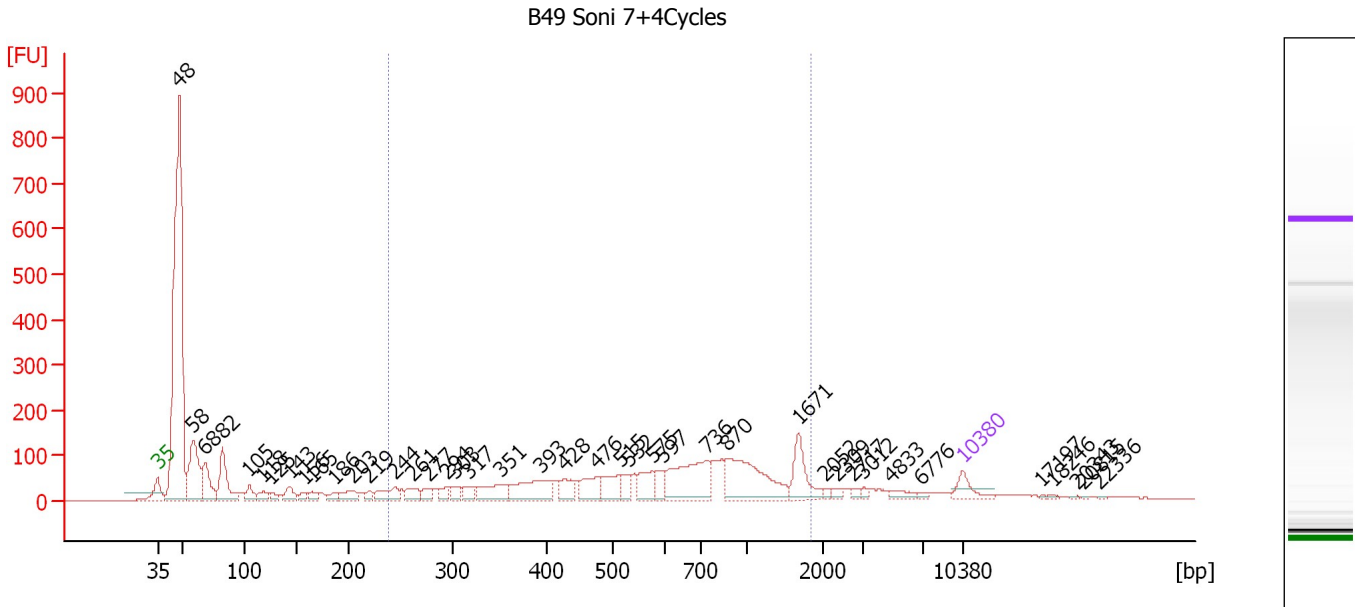
Region table for sample 9 : BB45 Soni 9+4Cycles

From [bp]	To [bp]	Average Size [bp]	Molarity [pmol/l]	Conc. [pg/µl]	Corr. Area	% of Total	Size distribution in CV [%]	Color
216	1,873	599	11,029.5	3,097.75	3,071.8	49	57.5	

Assay Class: High Sensitivity DNA Assay
 Data Path: C:\...ents and Settings\Bioanalyzer\2012-07-11\2012-07-11_004.xad

Created: 7/11/2012 12:28:19 PM
 Modified: 7/11/2012 1:11:24 PM

Electropherogram Summary Continued ...



Overall Results for sample 10 : B49 Soni 7+4Cycles

Number of peaks found: 41 Corr. Area 1: 2,181.2
 Noise: 0.6

Peak table for sample 10 : B49 Soni 7+4Cycles

Peak	Size [bp]	Conc. [pg/μl]	Molarity [pmol/l]	Observations
1	35	125.00	5,411.3	Lower Marker
2	48	2,798.36	88,659.5	
3	58	489.35	12,711.9	
4	68	252.31	5,606.4	
5	82	318.85	5,892.1	
6	105	80.23	1,159.6	
7	118	66.05	848.4	
8	125	35.01	423.2	
9	143	88.15	933.7	
10	156	35.81	347.3	
11	165	40.43	371.6	
12	186	41.22	336.5	
13	203	82.26	614.1	
14	219	32.57	224.9	
15	244	121.30	753.0	
16	261	73.32	426.4	
17	277	50.63	276.9	
18	294	49.67	255.9	
19	303	57.07	285.3	
20	317	58.57	279.7	
21	351	150.12	647.4	
22	393	242.23	933.6	
23	428	91.49	324.1	
24	476	131.38	417.9	
25	515	130.29	383.4	
26	532	71.05	202.3	

Assay Class: High Sensitivity DNA Assay
 Data Path: C:\...ents and Settings\Bioanalyzer\2012-07-11\2012-07-11_004.xad

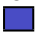
Created: 7/11/2012 12:28:19 PM
 Modified: 7/11/2012 1:11:24 PM

Electropherogram Summary Continued ...

... Peak table for sample 10 : B49 Soni 7+4Cycles

Peak	Size [bp]	Conc. [pg/μl]	Molarity [pmol/l]	Observations
27	575	116.88	307.8	
28	597	73.39	186.2	
29	736	381.49	784.8	
30	870	417.75	727.7	
31	1,671	169.30	153.5	
32	2,052	15.15	11.2	
33	2,309	20.93	13.7	
34	2,717	17.40	9.7	
35	3,012	17.30	8.7	
36	4,833	38.76	12.2	
37	6,776	13.52	3.0	
38	10,380	75.00	10.9	Upper Marker
39	17,197	0.00	0.0	
40	18,246	0.00	0.0	
41	20,343	0.00	0.0	
42	20,815	0.00	0.0	
43	22,336	0.00	0.0	

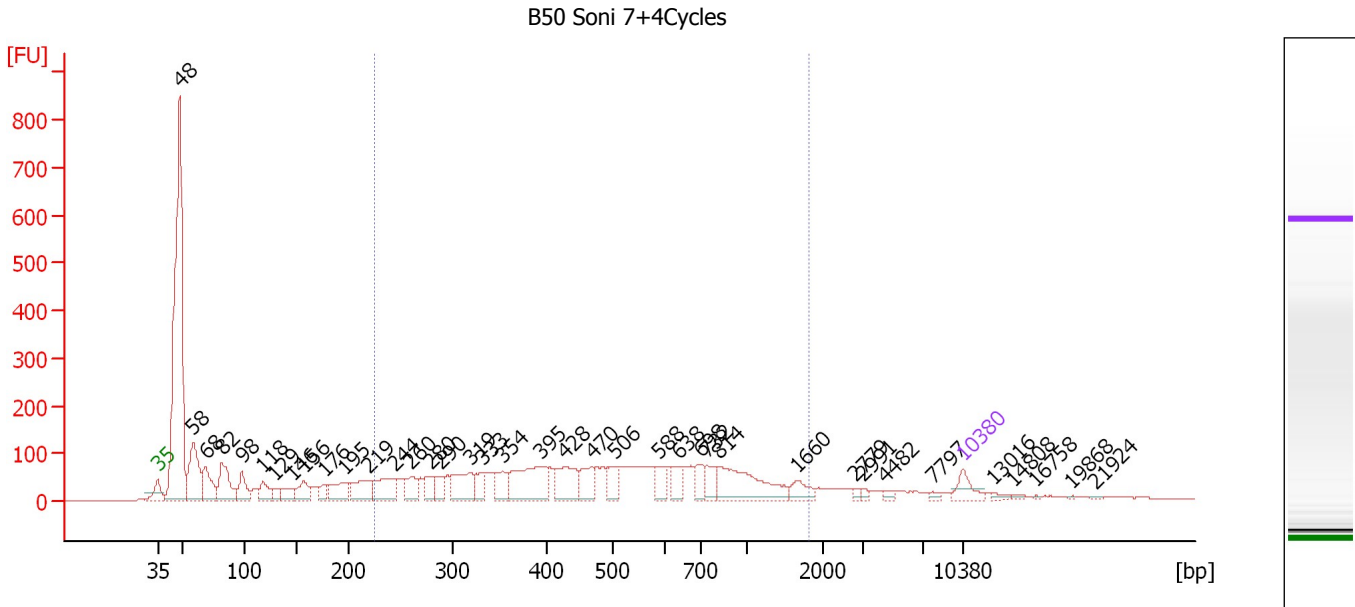
Region table for sample 10 : B49 Soni 7+4Cycles

From [bp]	To [bp]	Average Size [bp]	Molarity [pmol/l]	Conc. [pg/μl]	Corr. Area	% of Total	Size distribution in CV [%]	Color
239	1,844	715	7,953.7	2,617.75	2,181.2	43	55.8	

Assay Class: High Sensitivity DNA Assay
 Data Path: C:\...ents and Settings\Bioanalyzer\2012-07-11\2012-07-11_004.xad

Created: 7/11/2012 12:28:19 PM
 Modified: 7/11/2012 1:11:24 PM

Electropherogram Summary Continued ...



Overall Results for sample 11 : B50 Soni 7+4Cycles

Number of peaks found: 38 Corr. Area 1: 2,700.4
 Noise: 0.7

Peak table for sample 11 : B50 Soni 7+4Cycles

Peak	Size [bp]	Conc. [pg/μl]	Molarity [pmol/l]	Observations
1	35	125.00	5,411.3	Lower Marker
2	48	2,534.16	79,580.5	
3	58	453.90	11,760.2	
4	68	250.29	5,545.0	
5	82	323.71	5,997.9	
6	98	150.64	2,325.9	
7	118	127.34	1,636.4	
8	129	57.95	678.6	
9	146	99.64	1,034.0	
10	156	127.60	1,236.3	
11	176	76.43	657.7	
12	195	163.75	1,275.0	
13	219	183.38	1,267.0	
14	244	220.30	1,370.7	
15	260	120.21	700.4	
16	280	96.61	523.6	
17	290	80.08	419.0	
18	319	228.54	1,085.5	
19	333	97.71	445.2	
20	354	125.80	538.6	
21	395	374.80	1,439.1	
22	428	222.05	785.6	
23	470	149.30	481.6	
24	506	111.34	333.5	
25	588	99.36	255.9	
26	638	94.48	224.3	

Assay Class: High Sensitivity DNA Assay
 Data Path: C:\...ents and Settings\Bioanalyzer\2012-07-11\2012-07-11_004.xad


Created: 7/11/2012 12:28:19 PM
 Modified: 7/11/2012 1:11:24 PM

Electropherogram Summary Continued ...

... Peak table for sample 11 : B50 Soni 7+4Cycles

Peak	Size [bp]	Conc. [pg/μl]	Molarity [pmol/l]	Observations
27	698	92.64	201.0	
28	732	98.13	203.2	
29	814	368.42	685.4	
30	1,660	74.53	68.0	
31	2,779	14.36	7.8	
32	2,991	15.59	7.9	
33	4,482	16.60	5.6	
34	7,797	14.12	2.7	
35	10,380	75.00	10.9	Upper Marker
36	13,016	0.00	0.0	
37	14,808	0.00	0.0	
38	16,758	0.00	0.0	
39	19,868	0.00	0.0	
40	21,924	0.00	0.0	

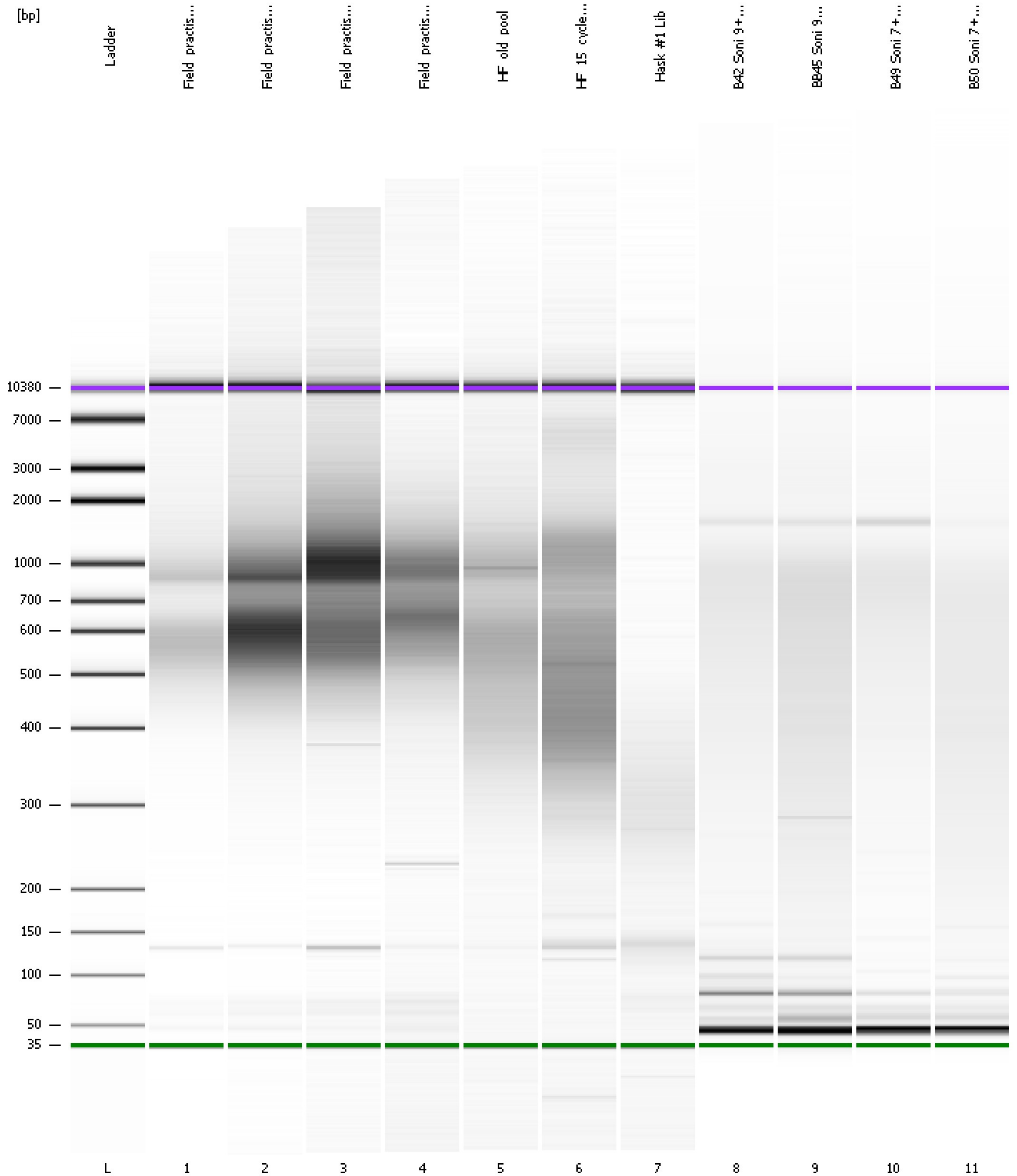
Region table for sample 11 : B50 Soni 7+4Cycles

From [bp]	To [bp]	Average Size [bp]	Molarity [pmol/l]	Conc. [pg/μl]	Corr. Area	% of Total	Size distribution in CV [%]	Color
224	1,810	564	13,006.0	3,553.10	2,700.4	48	56.2	

Assay Class: High Sensitivity DNA Assay
Data Path: C:\...ents and Settings\Bioanalyzer\2012-07-11\2012-07-11_004.xad

Created: 7/11/2012 12:28:19 PM
Modified: 7/11/2012 1:11:24 PM

Gel Image



Assay Class: High Sensitivity DNA Assay
 Data Path: C:\...ents and Settings\Bioanalyzer\2012-07-11\2012-07-11_004.xad

Created: 7/11/2012 12:28:19 PM
 Modified: 7/11/2012 1:11:24 PM

Run Logbook

Description	Number	Source	Category	Sub Category	Time	Time Zone	User	Host
Run ended on port 1 (Number of wells acquired: 12)		Instrument	Run		7/11/2012 1:09:39 PM	(GMT --07:00) Pacific Standard Time	UC Davis	D8XSMGH1
Run started on port 1 (File: C:\Documents and Settings\Bioanalyzer\2012-07-11\2012-07-11_004.xad)		Instrument	Run		7/11/2012 12:28:25 PM	(GMT --07:00) Pacific Standard Time	UC Davis	D8XSMGH1
Product Number : G2938B		Instrument	Run		7/11/2012 12:28:25 PM	(GMT --07:00) Pacific Standard Time	UC Davis	D8XSMGH1
Name :		Instrument	Run		7/11/2012 12:28:25 PM	(GMT --07:00) Pacific Standard Time	UC Davis	D8XSMGH1
Vendor : Agilent Technologies		Instrument	Run		7/11/2012 12:28:25 PM	(GMT --07:00) Pacific Standard Time	UC Davis	D8XSMGH1
Serial# : DE13701086		Instrument	Run		7/11/2012 12:28:25 PM	(GMT --07:00) Pacific Standard Time	UC Davis	D8XSMGH1
Firmware : C.01.069		Instrument	Run		7/11/2012 12:28:25 PM	(GMT --07:00) Pacific Standard Time	UC Davis	D8XSMGH1
Cartridge : Electrode		Instrument	Run		7/11/2012 12:28:25 PM	(GMT --07:00) Pacific Standard Time	UC Davis	D8XSMGH1