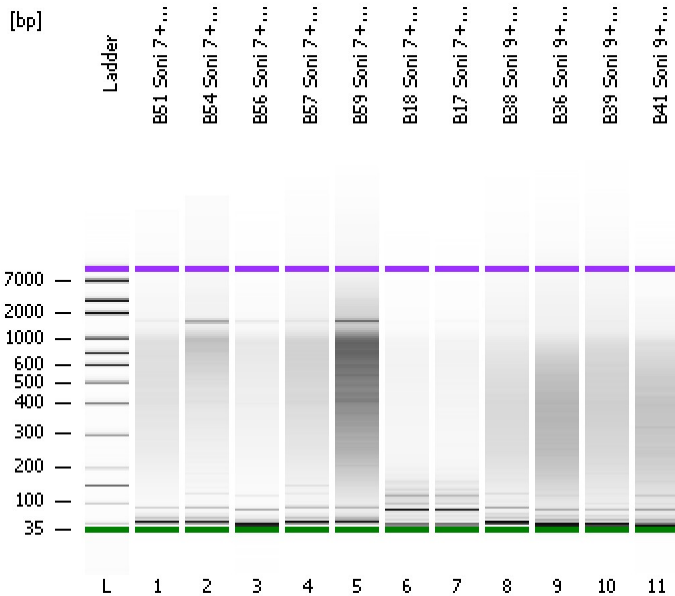


Assay Class: High Sensitivity DNA Assay
Data Path: C:\...ents and Settings\Bioanalyzer\2012-07-11\2012-07-11_005.xad

Created: 7/11/2012 1:23:36 PM
Modified: 7/11/2012 2:06:07 PM

Electrophoresis File Run Summary



Instrument Information:

Instrument Name: DE13701086 Firmware: C.01.069
Serial#: DE13701086 Type: G2938B

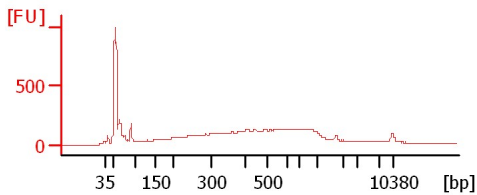
Assay Information:

Assay Origin Path: C:\Program Files\Agilent\2100 bioanalyzer\2100 expert\assays\dsDNA\High Sensitivity DNA.xsy
Assay Class: High Sensitivity DNA Assay
Version: 1.03
Assay Comments: Copyright © 2003-2010 Agilent Technologies

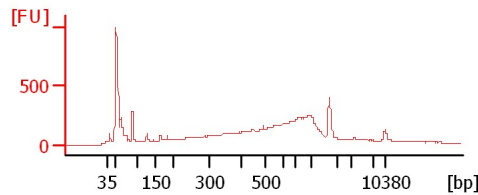
Chip Information:

Chip Lot #:
Reagent Kit Lot #:
Chip Comments:

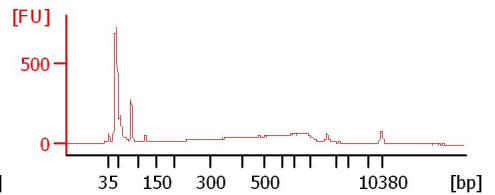
B51 Soni 7+5Cycles



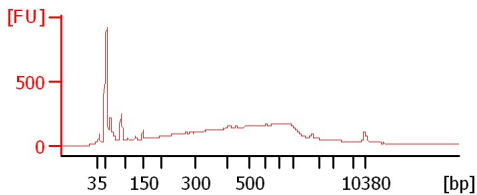
B54 Soni 7+5Cycles



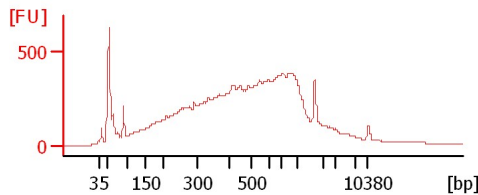
B56 Soni 7+5Cycles



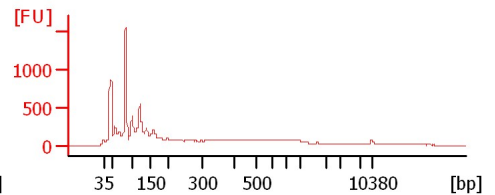
B57 Soni 7+5Cycles



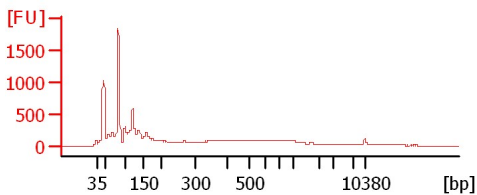
B59 Soni 7+5Cycles



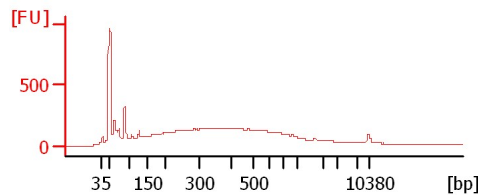
B18 Soni 7+5Cycles



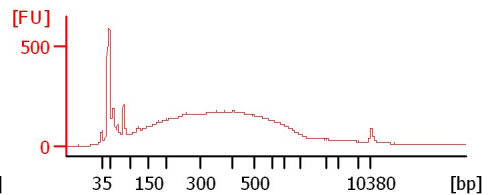
B17 Soni 7+5Cycles



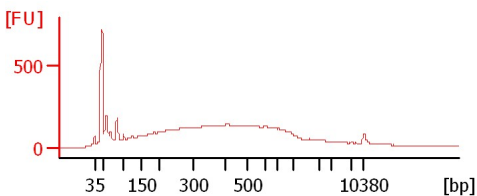
B38 Soni 9+4+3Cycles



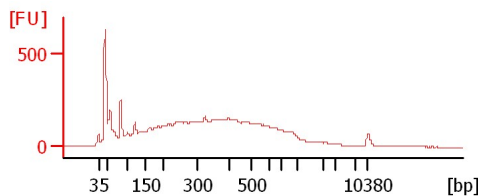
B36 Soni 9+4+4Cycles



B39 Soni 9+4+4Cycles



B41 Soni 9+4+4Cycles



Assay Class: High Sensitivity DNA Assay
Data Path: C:\...ents and Settings\Bioanalyzer\2012-07-11\2012-07-11_005.xad

Created: 7/11/2012 1:23:36 PM
Modified: 7/11/2012 2:06:07 PM

Electrophoresis File Run Summary (Chip Summary)

Sample Name	Sample Comment	Rest. Digest	Status	Observation	Result Label	Result Color
B51 Soni 7+5Cycles		<input type="checkbox"/>	✓			
B54 Soni 7+5Cycles		<input type="checkbox"/>	✓			
B56 Soni 7+5Cycles		<input type="checkbox"/>	✓			
B57 Soni 7+5Cycles		<input type="checkbox"/>	✓			
B59 Soni 7+5Cycles		<input type="checkbox"/>	✓			
B18 Soni 7+5Cycles		<input type="checkbox"/>	✓			
B17 Soni 7+5Cycles		<input type="checkbox"/>	✓			
B38 Soni 9+4+3Cycles		<input type="checkbox"/>	✓			
B36 Soni 9+4+4Cycles		<input type="checkbox"/>	✓			
B39 Soni 9+4+4Cycles		<input type="checkbox"/>	✓			
B41 Soni 9+4+4Cycles		<input type="checkbox"/>	✓			
Ladder		<input type="checkbox"/>	✓			

Chip Lot #

Reagent Kit Lot #

Chip Comments :

Assay Class: High Sensitivity DNA Assay
Data Path: C:\...ents and Settings\Bioanalyzer\2012-07-11\2012-07-11_005.xad

Created: 7/11/2012 1:23:36 PM
Modified: 7/11/2012 2:06:07 PM

Electrophoresis Assay Details

General Analysis Settings

Number of Available Sample and Ladder Wells (Max.) : 12
Minimum Visible Range [s] : 32
Maximum Visible Range [s] : 138
Start Analysis Time Range [s] : 33
End Analysis Time Range [s] : 137.5
Ladder Concentration [pg/μl] : 1950
Uses Standard Area for Ladder Fragments
Lower Marker Concentration [pg/μl] : 125
Upper Marker Concentration [pg/μl] : 75
Used Upper Marker for Quantitation
Standard Curve Fit is Point to Point
Show Data Aligned to Lower and Upper Marker

Integrator Settings

Integration Start Time [s] : 33.05
Integration End Time [s] : 137
Slope Threshold : 0.8
Height Threshold [FU] : 5
Area Threshold : 0.1
Width Threshold [s] : 0.6
Baseline Plateau [s] : 0.5

Filter Settings

Filter Width [s] : 0.5
Polynomial Order : 4

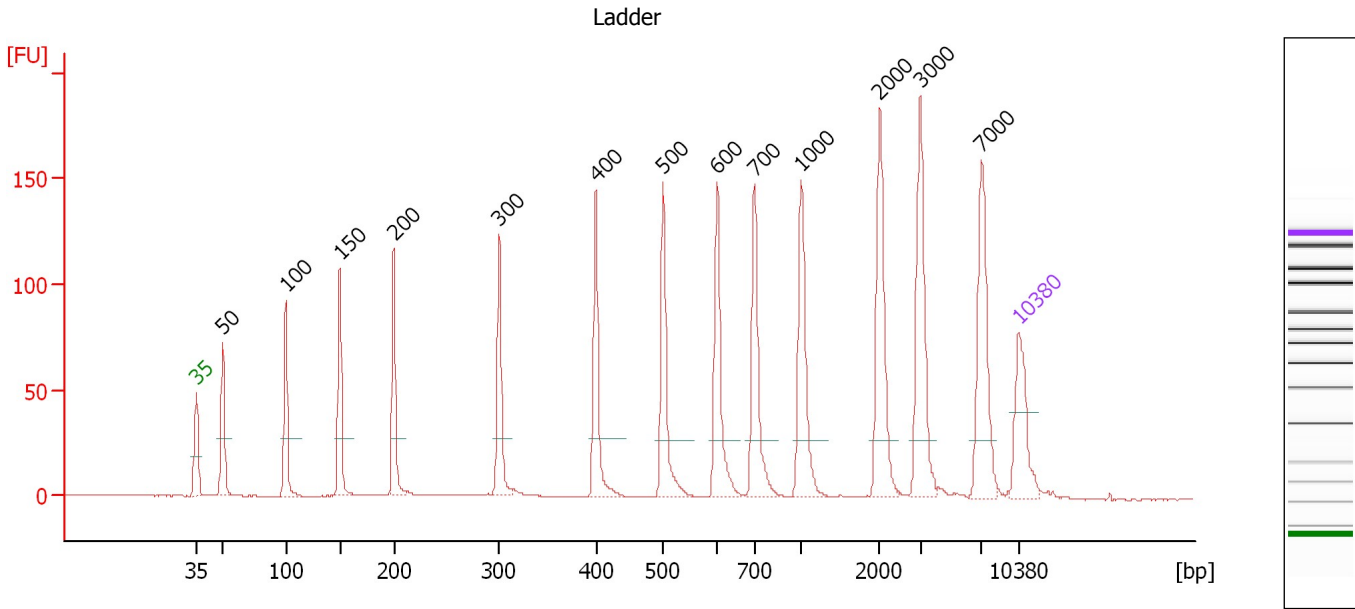
Ladder

Ladder Peak	Size	Area
1	35	160
2	50	210
3	100	208
4	150	221
5	200	242
6	300	270
7	400	305
8	500	306
9	600	336
10	700	321
11	1000	366
12	2000	413
13	3000	411
14	7000	400
15	10380	214

Assay Class: High Sensitivity DNA Assay
 Data Path: C:\...ents and Settings\Bioanalyzer\2012-07-11\2012-07-11_005.xad

Created: 7/11/2012 1:23:36 PM
 Modified: 7/11/2012 2:06:07 PM

Electropherogram Summary



Overall Results for Ladder

Noise: 0.1

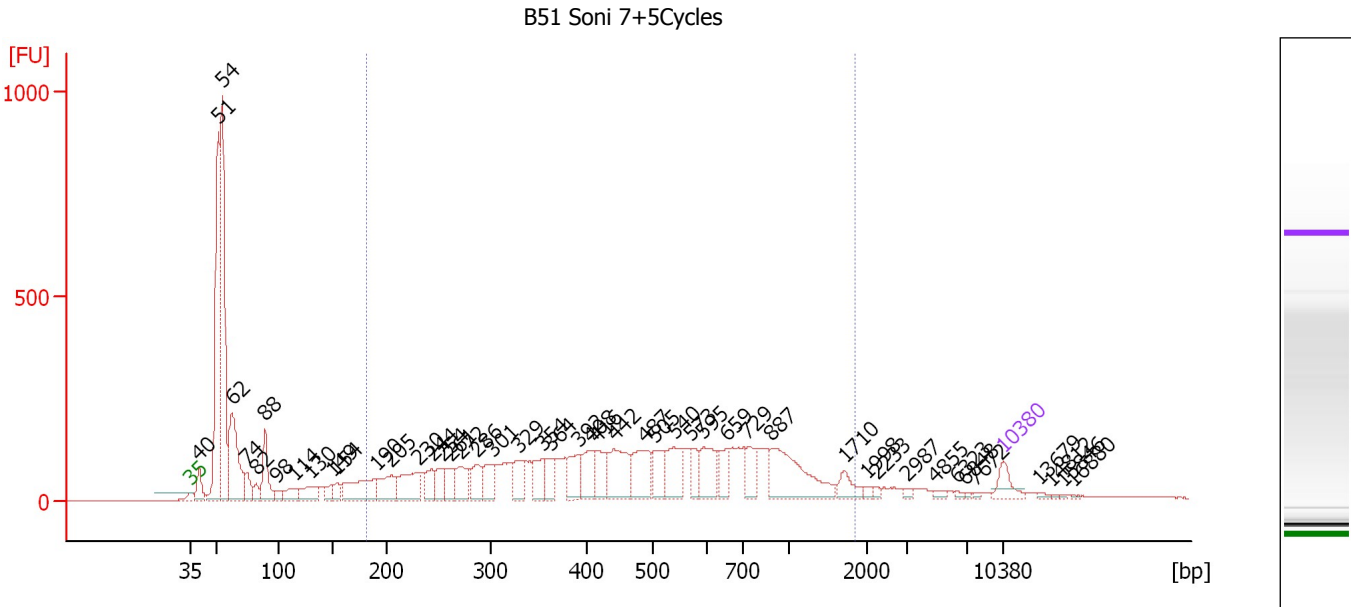
Peak table for Ladder

Peak	Size [bp]	Conc. [pg/μl]	Molarity [pmol/l]	Observations
1	35	125.00	5,411.3	Lower Marker
2	50	150.00	4,545.5	Ladder Peak
3	100	150.00	2,272.7	Ladder Peak
4	150	150.00	1,515.2	Ladder Peak
5	200	150.00	1,136.4	Ladder Peak
6	300	150.00	757.6	Ladder Peak
7	400	150.00	568.2	Ladder Peak
8	500	150.00	454.5	Ladder Peak
9	600	150.00	378.8	Ladder Peak
10	700	150.00	324.7	Ladder Peak
11	1,000	150.00	227.3	Ladder Peak
12	2,000	150.00	113.6	Ladder Peak
13	3,000	150.00	75.8	Ladder Peak
14	7,000	150.00	32.5	Ladder Peak
15	10,380	75.00	10.9	Upper Marker

Assay Class: High Sensitivity DNA Assay
 Data Path: C:\...ents and Settings\Bioanalyzer\2012-07-11\2012-07-11_005.xad

Created: 7/11/2012 1:23:36 PM
 Modified: 7/11/2012 2:06:07 PM

Electropherogram Summary Continued ...



Overall Results for sample 1 : B51 Soni 7+5Cycles

Number of peaks found: 48 Corr. Area 1: 5,231.2
 Noise: 0.2

Peak table for sample 1 : B51 Soni 7+5Cycles

Peak	Size [bp]	Conc. [pg/μl]	Molarity [pmol/l]	Observations
1	35	125.00	5,411.3	Lower Marker
2	40	146.48	5,602.1	
3	51	1,247.33	37,085.7	
4	54	1,544.18	43,034.1	
5	62	660.32	16,017.9	
6	74	128.24	2,627.2	
7	82	67.36	1,250.3	
8	88	282.22	4,834.9	
9	98	56.34	872.7	
10	114	111.78	1,482.8	
11	130	144.09	1,679.4	
12	149	59.91	608.4	
13	154	62.54	616.6	
14	190	313.82	2,502.4	
15	205	196.36	1,454.7	
16	230	264.71	1,740.6	
17	244	116.71	725.9	
18	254	112.39	671.0	
19	261	119.71	693.9	
20	272	177.60	989.1	
21	286	153.87	815.8	
22	301	139.52	702.1	
23	329	178.30	820.1	
24	354	158.36	678.1	
25	364	127.19	529.7	
26	392	172.77	668.5	

Assay Class: High Sensitivity DNA Assay
 Data Path: C:\...ents and Settings\Bioanalyzer\2012-07-11\2012-07-11_005.xad


Created: 7/11/2012 1:23:36 PM
 Modified: 7/11/2012 2:06:07 PM

Electropherogram Summary Continued ...

... Peak table for sample 1 : B51 Soni 7+5Cycles

Peak	Size [bp]	Conc. [pg/µl]	Molarity [pmol/l]	Observations
27	408	191.10	709.9	
28	416	149.27	543.8	
29	442	302.76	1,037.4	
30	487	260.97	812.1	
31	505	171.97	516.5	
32	540	223.49	626.7	
33	573	105.79	279.6	
34	595	186.29	474.3	
35	659	107.34	246.8	
36	729	138.91	288.8	
37	887	417.95	714.3	
38	1,710	81.08	71.8	
39	1,998	19.18	14.5	
40	2,233	13.11	8.9	
41	2,987	16.09	8.2	
42	4,855	14.70	4.6	
43	6,323	9.67	2.3	
44	6,848	6.41	1.4	
45	7,672	6.94	1.4	
46	10,380	75.00	10.9	Upper Marker
47	13,679	0.00	0.0	
48	14,812	0.00	0.0	
49	15,846	0.00	0.0	
50	16,880	0.00	0.0	

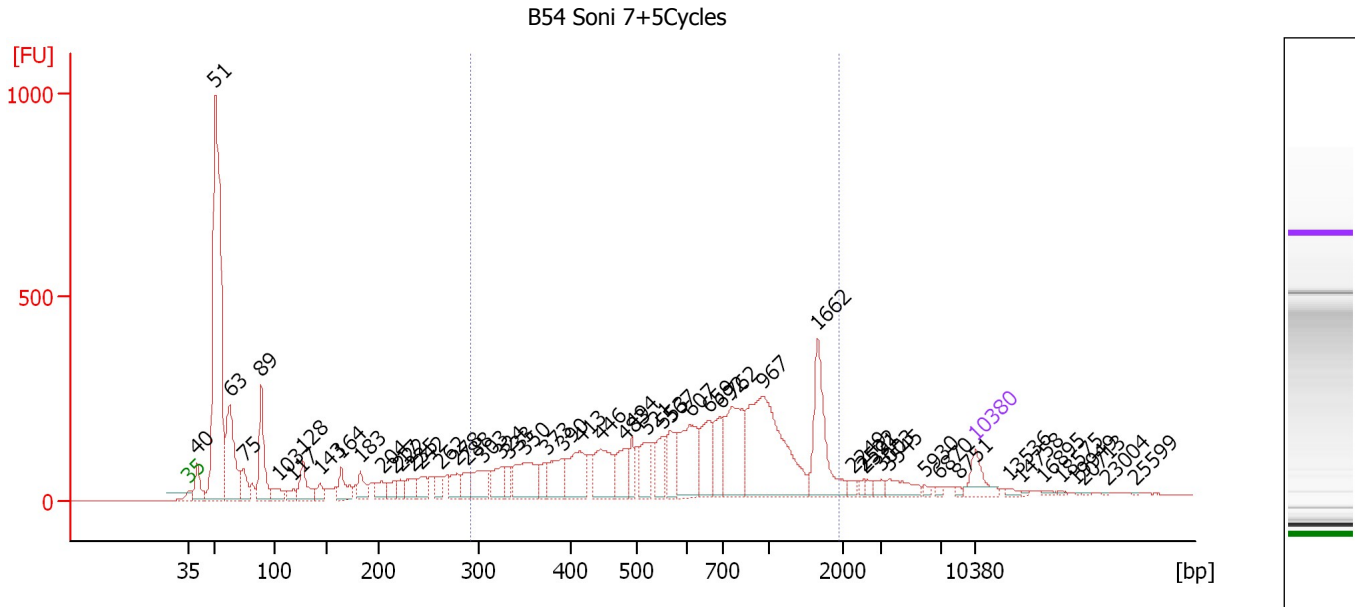
Region table for sample 1 : B51 Soni 7+5Cycles

From [bp]	To [bp]	Average Size [bp]	Molarity [pmol/l]	Conc. [pg/µl]	Corr. Area	% of Total	Size distribution in CV [%]	Color
182	1,850	547	20,979.6	5,307.56	5,231.2	59	57.2	

Assay Class: High Sensitivity DNA Assay
 Data Path: C:\...ents and Settings\Bioanalyzer\2012-07-11\2012-07-11_005.xad

Created: 7/11/2012 1:23:36 PM
 Modified: 7/11/2012 2:06:07 PM

Electropherogram Summary Continued ...



Overall Results for sample 2 : B54 Soni 7+5Cycles

Number of peaks found: 54 Corr. Area 1: 5,273.9
 Noise: 0.4

Peak table for sample 2 : B54 Soni 7+5Cycles

Peak	Size [bp]	Conc. [pg/μl]	Molarity [pmol/l]	Observations
1	35	125.00	5,411.3	Lower Marker
2	40	143.97	5,484.7	
3	51	2,010.69	59,956.3	
4	63	508.36	12,284.6	
5	75	122.67	2,491.8	
6	89	342.03	5,815.0	
7	103	69.05	1,013.8	
8	117	46.74	602.8	
9	128	159.46	1,892.7	
10	143	54.36	574.2	
11	164	118.18	1,088.7	
12	183	86.42	715.6	
13	204	76.08	566.1	
14	217	58.65	410.0	
15	222	44.83	306.0	
16	235	81.00	523.2	
17	242	77.54	484.5	
18	262	62.59	362.1	
19	278	80.04	436.0	
20	288	71.21	375.2	
21	303	141.20	705.9	
22	324	107.66	503.0	
23	333	66.15	301.0	
24	350	220.32	953.3	
25	373	68.71	279.4	
26	390	147.51	573.4	

Assay Class: High Sensitivity DNA Assay
 Data Path: C:\...ents and Settings\Bioanalyzer\2012-07-11\2012-07-11_005.xad

Created: 7/11/2012 1:23:36 PM
 Modified: 7/11/2012 2:06:07 PM

Electropherogram Summary Continued ...

... Peak table for sample 2 : B54 Soni 7+5Cycles

Peak	Size [bp]	Conc. [pg/µl]	Molarity [pmol/l]	Observations
27	413	203.98	747.7	
28	446	206.07	700.8	
29	483	139.33	437.4	
30	494	80.64	247.2	
31	521	123.74	360.2	
32	553	117.20	320.9	
33	567	119.62	319.8	
34	607	261.26	652.1	
35	659	171.93	395.3	
36	692	138.48	303.4	
37	762	327.80	652.2	
38	967	632.08	990.4	
39	1,662	271.34	247.3	
40	2,249	20.33	13.7	
41	2,522	13.75	8.3	
42	2,591	13.50	7.9	
43	3,003	24.42	12.3	
44	3,545	59.79	25.6	
45	5,930	10.24	2.6	
46	6,870	7.99	1.8	
47	8,751	7.73	1.3	
48	10,380	75.00	10.9	Upper Marker
49	13,536	0.00	0.0	
50	14,758	0.00	0.0	
51	16,895	0.00	0.0	
52	18,575	0.00	0.0	
53	19,949	0.00	0.0	
54	20,713	0.00	0.0	
55	23,004	0.00	0.0	
56	25,599	0.00	0.0	

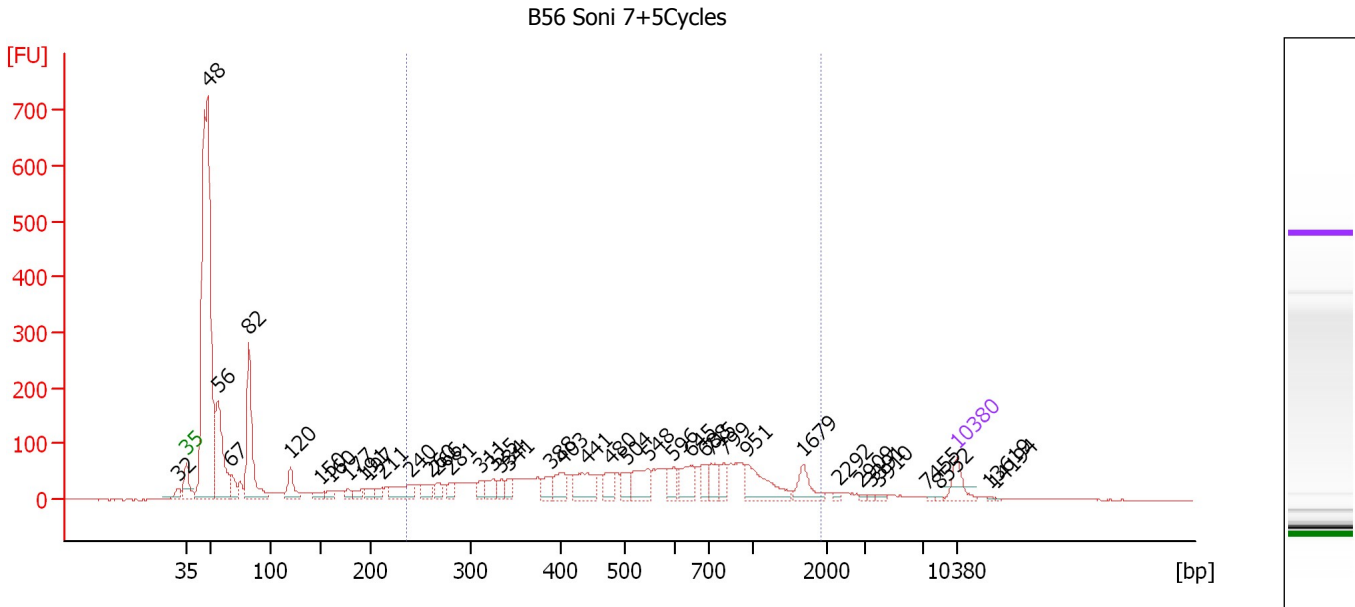
Region table for sample 2 : B54 Soni 7+5Cycles

From [bp]	To [bp]	Average Size [bp]	Molarity [pmol/l]	Conc. [pg/µl]	Corr. Area	% of Total	Size distribution in CV [%]	Color
291	1,933	754	10,122.2	3,696.12	5,273.9	53	53.3	

Assay Class: High Sensitivity DNA Assay
 Data Path: C:\...ents and Settings\Bioanalyzer\2012-07-11\2012-07-11_005.xad

Created: 7/11/2012 1:23:36 PM
 Modified: 7/11/2012 2:06:07 PM

Electropherogram Summary Continued ...



Overall Results for sample 3 : B56 Soni 7+5Cycles

Number of peaks found: 41 Corr. Area 1: 2,027.2
 Noise: 0.6

Peak table for sample 3 : B56 Soni 7+5Cycles

Peak	Size [bp]	Conc. [pg/μl]	Molarity [pmol/l]	Observations
1	32	0.00	0.0	
2	35	125.00	5,411.3	Lower Marker
3	48	3,002.71	94,667.3	
4	56	640.24	17,354.1	
5	67	106.57	2,402.9	
6	82	667.06	12,309.5	
7	120	140.34	1,770.8	
8	150	46.29	466.3	
9	160	47.05	445.8	
10	177	36.75	314.9	
11	191	53.21	422.0	
12	197	46.84	359.5	
13	211	47.18	339.1	
14	240	139.04	878.2	
15	260	81.08	471.9	
16	266	58.50	332.9	
17	281	46.89	253.0	
18	311	45.54	222.0	
19	325	83.18	387.8	
20	334	53.81	244.2	
21	341	46.99	208.5	
22	388	76.87	300.2	
23	403	112.89	424.3	
24	441	176.44	605.9	
25	480	82.86	261.5	
26	504	74.63	224.5	

Assay Class: High Sensitivity DNA Assay
 Data Path: C:\...ents and Settings\Bioanalyzer\2012-07-11\2012-07-11_005.xad

Created: 7/11/2012 1:23:36 PM
 Modified: 7/11/2012 2:06:07 PM

Electropherogram Summary Continued ...

... Peak table for sample 3 : B56 Soni 7+5Cycles

Peak	Size [bp]	Conc. [pg/µl]	Molarity [pmol/l]	Observations
27	548	154.22	426.3	
28	596	84.42	214.8	
29	645	129.81	304.7	
30	688	57.65	126.9	
31	715	93.95	199.1	
32	799	63.56	120.6	
33	951	198.95	316.8	
34	1,679	93.18	84.1	
35	2,292	9.19	6.1	
36	2,909	6.92	3.6	
37	3,391	8.19	3.7	
38	3,910	10.59	4.1	
39	7,455	4.58	0.9	
40	8,552	4.14	0.7	
41	10,380	75.00	10.9	Upper Marker
42	13,619	0.00	0.0	
43	14,194	0.00	0.0	

Region table for sample 3 : B56 Soni 7+5Cycles

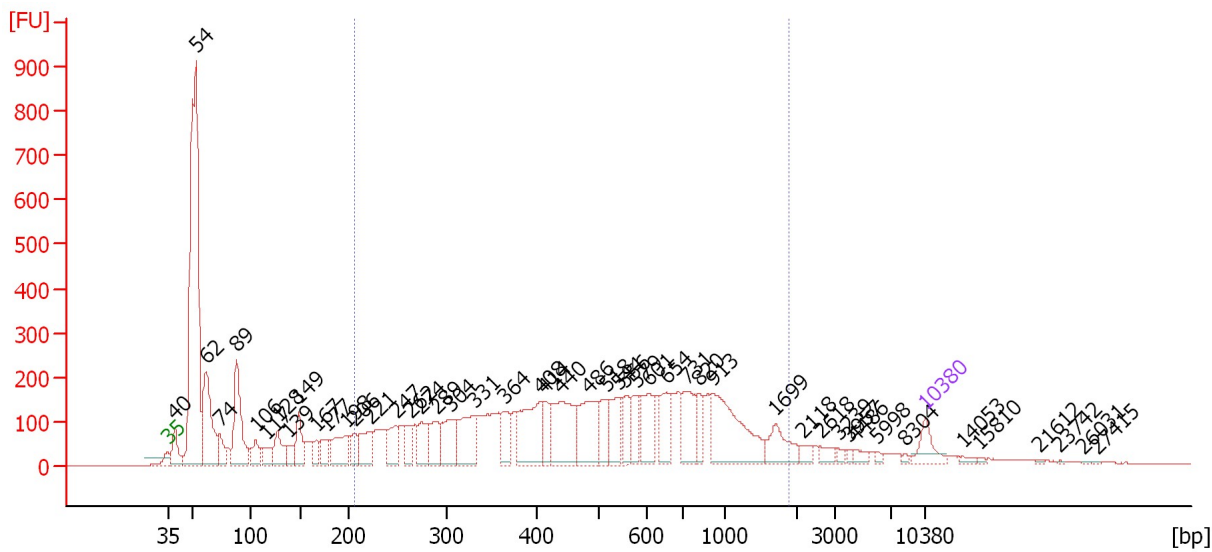
From [bp]	To [bp]	Average Size [bp]	Molarity [pmol/l]	Conc. [pg/µl]	Corr. Area	% of Total	Size distribution in CV [%]	Color
236	1,930	630	9,091.1	2,720.67	2,027.2	42	56.5	■

Assay Class: High Sensitivity DNA Assay
Data Path: C:\...ents and Settings\Bioanalyzer\2012-07-11\2012-07-11_005.xad

Created: 7/11/2012 1:23:36 PM
Modified: 7/11/2012 2:06:07 PM

Electropherogram Summary Continued ...

B57 Soni 7+5Cycles



Overall Results for sample 4 : B57 Soni 7+5Cycles

Number of peaks found: 49 Corr. Area 1: 6,089.4
Noise: 0.7

Peak table for sample 4 : B57 Soni 7+5Cycles

Peak	Size [bp]	Conc. [pg/µl]	Molarity [pmol/l]	Observations
1	35	125.00	5,411.3	Lower Marker
2	40	149.86	5,725.6	
3	54	2,020.13	56,573.0	
4	62	512.47	12,445.1	
5	74	104.60	2,131.1	
6	89	430.69	7,361.9	
7	106	89.81	1,283.2	
8	117	84.04	1,086.2	
9	128	142.54	1,688.9	
10	139	61.88	674.2	
11	149	157.58	1,600.4	
12	167	71.97	653.3	
13	177	87.37	747.2	
14	198	189.92	1,456.3	
15	206	96.64	711.6	
16	221	139.04	952.6	
17	247	151.37	926.7	
18	262	97.08	561.9	
19	274	143.47	793.8	
20	289	134.91	706.8	
21	304	193.31	964.1	
22	331	246.31	1,128.1	
23	364	127.55	530.3	
24	408	317.31	1,177.1	
25	414	108.74	397.5	
26	440	345.25	1,187.9	

Assay Class: High Sensitivity DNA Assay
 Data Path: C:\...ents and Settings\Bioanalyzer\2012-07-11\2012-07-11_005.xad

Created: 7/11/2012 1:23:36 PM
 Modified: 7/11/2012 2:06:07 PM

Electropherogram Summary Continued ...

... Peak table for sample 4 : B57 Soni 7+5Cycles

Peak	Size [bp]	Conc. [pg/µl]	Molarity [pmol/l]	Observations
27	486	264.44	824.3	
28	518	128.50	375.8	
29	544	147.50	410.9	
30	556	94.65	258.0	
31	579	105.02	274.6	
32	601	174.42	439.4	
33	654	145.78	337.6	
34	731	178.92	370.6	
35	820	79.81	147.4	
36	913	402.73	668.4	
37	1,699	118.42	105.6	
38	2,118	30.71	22.0	
39	2,618	32.21	18.6	
40	3,239	17.44	8.2	
41	3,957	11.83	4.5	
42	4,486	22.70	7.7	
43	5,998	9.63	2.4	
44	8,304	7.90	1.4	
45	10,380	75.00	10.9	Upper Marker
46	14,053	0.00	0.0	
47	15,810	0.00	0.0	
48	21,612	0.00	0.0	
49	23,742	0.00	0.0	
50	26,031	0.00	0.0	
51	27,415	0.00	0.0	

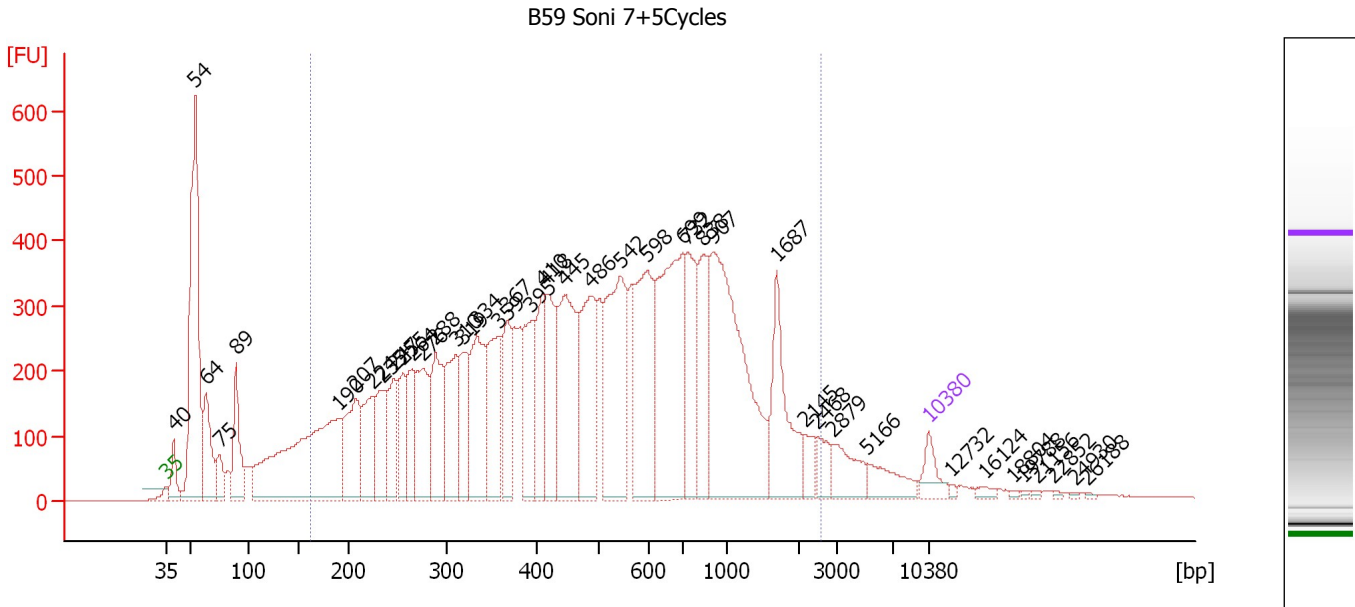
Region table for sample 4 : B57 Soni 7+5Cycles

From [bp]	To [bp]	Average Size [bp]	Molarity [pmol/l]	Conc. [pg/µl]	Corr. Area	% of Total	Size distribution in CV [%]	Color
205	1,891	582	17,860.4	4,851.26	6,089.4	58	57.6	

Assay Class: High Sensitivity DNA Assay
 Data Path: C:\...ents and Settings\Bioanalyzer\2012-07-11\2012-07-11_005.xad

Created: 7/11/2012 1:23:36 PM
 Modified: 7/11/2012 2:06:07 PM

Electropherogram Summary Continued ...



Overall Results for sample 5 : B59 Soni 7+5Cycles

Number of peaks found: 43 Corr. Area 1: 14,469.5
 Noise: 0.4

Peak table for sample 5 : B59 Soni 7+5Cycles

Peak	Size [bp]	Conc. [pg/µl]	Molarity [pmol/l]	Observations
1	35	125.00	5,411.3	Lower Marker
2	40	140.96	5,368.1	
3	54	1,419.85	39,607.6	
4	64	361.45	8,586.9	
5	75	131.07	2,643.2	
6	89	326.91	5,544.8	
7	190	1,338.87	10,653.6	
8	207	406.68	2,982.9	
9	224	320.40	2,166.7	
10	235	257.40	1,661.2	
11	247	268.49	1,649.5	
12	255	219.75	1,305.3	
13	264	253.01	1,451.5	
14	276	390.78	2,145.7	
15	288	388.11	2,039.4	
16	310	362.93	1,773.4	
17	319	283.20	1,346.3	
18	334	458.24	2,081.7	
19	359	399.97	1,688.9	
20	367	296.86	1,224.0	
21	395	359.87	1,381.8	
22	410	293.85	1,086.0	
23	418	346.90	1,257.6	
24	445	588.22	2,000.9	
25	486	481.87	1,501.7	
26	542	675.64	1,887.1	

Assay Class: High Sensitivity DNA Assay
 Data Path: C:\...ents and Settings\Bioanalyzer\2012-07-11\2012-07-11_005.xad


Created: 7/11/2012 1:23:36 PM
 Modified: 7/11/2012 2:06:07 PM

Electropherogram Summary Continued ...

... Peak table for sample 5 : B59 Soni 7+5Cycles

Peak	Size [bp]	Conc. [pg/μl]	Molarity [pmol/l]	Observations
27	598	566.90	1,437.0	
28	699	883.62	1,915.7	
29	732	337.61	699.3	
30	838	317.22	573.5	
31	907	1,059.46	1,770.5	
32	1,687	338.90	304.3	
33	2,145	59.45	42.0	
34	2,468	73.92	45.4	
35	2,879	130.33	68.6	
36	5,166	109.76	32.2	
37	10,380	75.00	10.9	Upper Marker
38	12,732	0.00	0.0	
39	16,124	0.00	0.0	
40	18,804	0.00	0.0	
41	19,788	0.00	0.0	
42	21,156	0.00	0.0	
43	22,852	0.00	0.0	
44	24,930	0.00	0.0	
45	26,188	0.00	0.0	

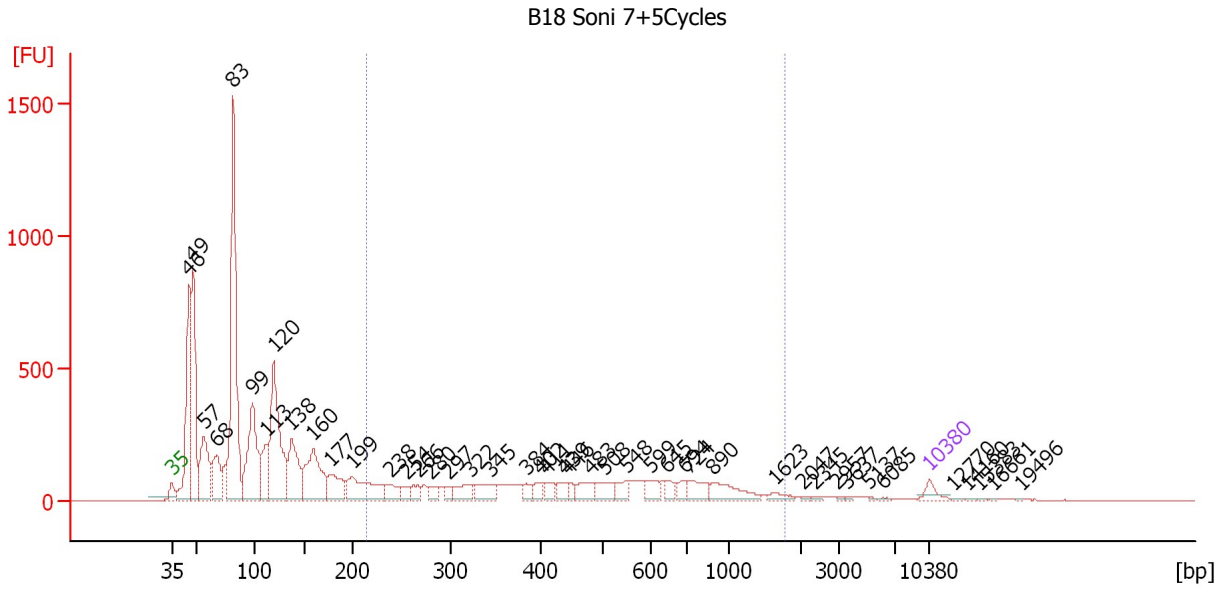
Region table for sample 5 : B59 Soni 7+5Cycles

From [bp]	To [bp]	Average Size [bp]	Molarity [pmol/l]	Conc. [pg/μl]	Corr. Area	% of Total	Size distribution in CV [%]	Color
162	2,585	622	47,085.0	12,022.09	14,469.5	80	69.1	

Assay Class: High Sensitivity DNA Assay
 Data Path: C:\...ents and Settings\Bioanalyzer\2012-07-11\2012-07-11_005.xad

Created: 7/11/2012 1:23:36 PM
 Modified: 7/11/2012 2:06:07 PM

Electropherogram Summary Continued ...



Overall Results for sample 6 : B18 Soni 7+5Cycles

Number of peaks found: 44 Corr. Area 1: 2,976.8
 Noise: 0.5

Peak table for sample 6 : B18 Soni 7+5Cycles

Peak	Size [bp]	Conc. [pg/μl]	Molarity [pmol/l]	Observations
1	35	125.00	5,411.3	Lower Marker
2	46	1,440.79	47,337.5	
3	49	1,641.82	51,240.6	
4	57	810.07	21,485.7	
5	68	511.42	11,364.4	
6	83	2,956.45	54,224.7	
7	99	1,307.15	20,014.0	
8	113	479.31	6,412.3	
9	120	1,631.49	20,611.3	
10	138	756.82	8,325.6	
11	160	910.95	8,652.4	
12	177	399.45	3,420.6	
13	199	631.21	4,809.8	
14	238	184.67	1,176.7	
15	254	107.50	641.6	
16	266	125.22	713.6	
17	280	111.83	604.7	
18	297	90.91	463.2	
19	322	203.56	959.0	
20	345	233.21	1,024.8	
21	384	94.13	371.1	
22	402	97.07	366.1	
23	411	112.03	413.2	
24	439	109.27	377.4	
25	446	65.85	223.8	
26	483	181.71	570.2	

Assay Class: High Sensitivity DNA Assay
 Data Path: C:\...ents and Settings\Bioanalyzer\2012-07-11\2012-07-11_005.xad

Created: 7/11/2012 1:23:36 PM
 Modified: 7/11/2012 2:06:07 PM

Electropherogram Summary Continued ...

... Peak table for sample 6 : B18 Soni 7+5Cycles

Peak	Size [bp]	Conc. [pg/μl]	Molarity [pmol/l]	Observations
27	508	174.54	520.8	
28	548	118.56	327.7	
29	599	129.44	327.5	
30	645	80.05	188.0	
31	694	79.94	174.6	
32	724	179.57	375.8	
33	890	251.45	427.9	
34	1,623	57.55	53.7	
35	2,047	14.75	10.9	
36	2,345	15.98	10.3	
37	2,957	7.97	4.1	
38	3,637	9.69	4.0	
39	5,137	7.29	2.2	
40	6,085	12.98	3.2	
41	10,380	75.00	10.9	Upper Marker
42	12,770	0.00	0.0	
43	14,160	0.00	0.0	
44	15,383	0.00	0.0	
45	16,661	0.00	0.0	
46	19,496	0.00	0.0	

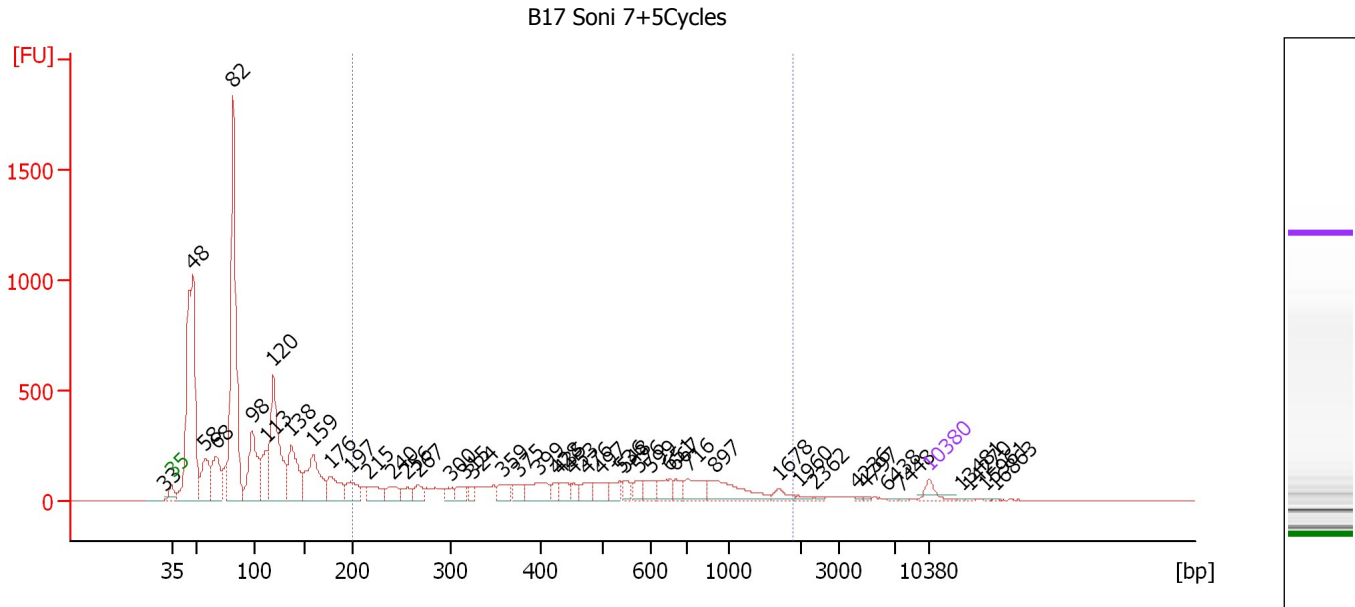
Region table for sample 6 : B18 Soni 7+5Cycles

From [bp]	To [bp]	Average Size [bp]	Molarity [pmol/l]	Conc. [pg/μl]	Corr. Area	% of Total	Size distribution in CV [%]	Color
213	1,776	532	14,251.1	3,643.74	2,976.8	27	55.1	

Assay Class: High Sensitivity DNA Assay
 Data Path: C:\...ents and Settings\Bioanalyzer\2012-07-11\2012-07-11_005.xad

Created: 7/11/2012 1:23:36 PM
 Modified: 7/11/2012 2:06:07 PM

Electropherogram Summary Continued ...



Overall Results for sample 7 : B17 Soni 7+5Cycles

Number of peaks found: 46 Corr. Area 1: 3,663.2
 Noise: 0.4

Peak table for sample 7 : B17 Soni 7+5Cycles

Peak	Size [bp]	Conc. [pg/μl]	Molarity [pmol/l]	Observations
1	33	0.00	0.0	
2	35	125.00	5,411.3	Lower Marker
3	48	3,041.91	95,949.3	
4	58	563.37	14,592.2	
5	68	535.10	11,879.2	
6	82	3,088.01	56,787.4	
7	98	851.70	13,103.2	
8	113	464.46	6,232.4	
9	120	1,443.74	18,277.2	
10	138	679.62	7,476.1	
11	159	773.62	7,359.8	
12	176	355.72	3,056.2	
13	197	233.73	1,793.6	
14	215	211.77	1,493.7	
15	240	174.18	1,100.5	
16	256	108.55	643.7	
17	267	125.60	712.4	
18	300	97.17	490.3	
19	315	108.57	522.4	
20	324	68.61	321.0	
21	359	127.76	539.5	
22	375	97.53	393.7	
23	399	248.03	940.7	
24	428	68.74	243.1	
25	435	105.41	367.3	
26	453	65.75	219.9	

Assay Class: High Sensitivity DNA Assay
 Data Path: C:\...ents and Settings\Bioanalyzer\2012-07-11\2012-07-11_005.xad

Created: 7/11/2012 1:23:36 PM
 Modified: 7/11/2012 2:06:07 PM

Electropherogram Summary Continued ...

... Peak table for sample 7 : B17 Soni 7+5Cycles

Peak	Size [bp]	Conc. [pg/µl]	Molarity [pmol/l]	Observations
27	476	129.78	413.1	
28	497	149.81	456.7	
29	536	112.51	318.0	
30	548	87.50	242.1	
31	576	93.82	246.8	
32	599	123.50	312.5	
33	651	144.05	335.3	
34	667	93.90	213.2	
35	716	205.39	434.5	
36	897	329.15	556.2	
37	1,678	63.06	56.9	
38	1,960	25.60	19.8	
39	2,362	14.72	9.4	
40	4,236	7.24	2.6	
41	4,797	8.39	2.7	
42	6,438	8.60	2.0	
43	7,448	6.47	1.3	
44	10,380	75.00	10.9	Upper Marker
45	13,481	0.00	0.0	
46	14,270	0.00	0.0	
47	15,961	0.00	0.0	
48	16,863	0.00	0.0	

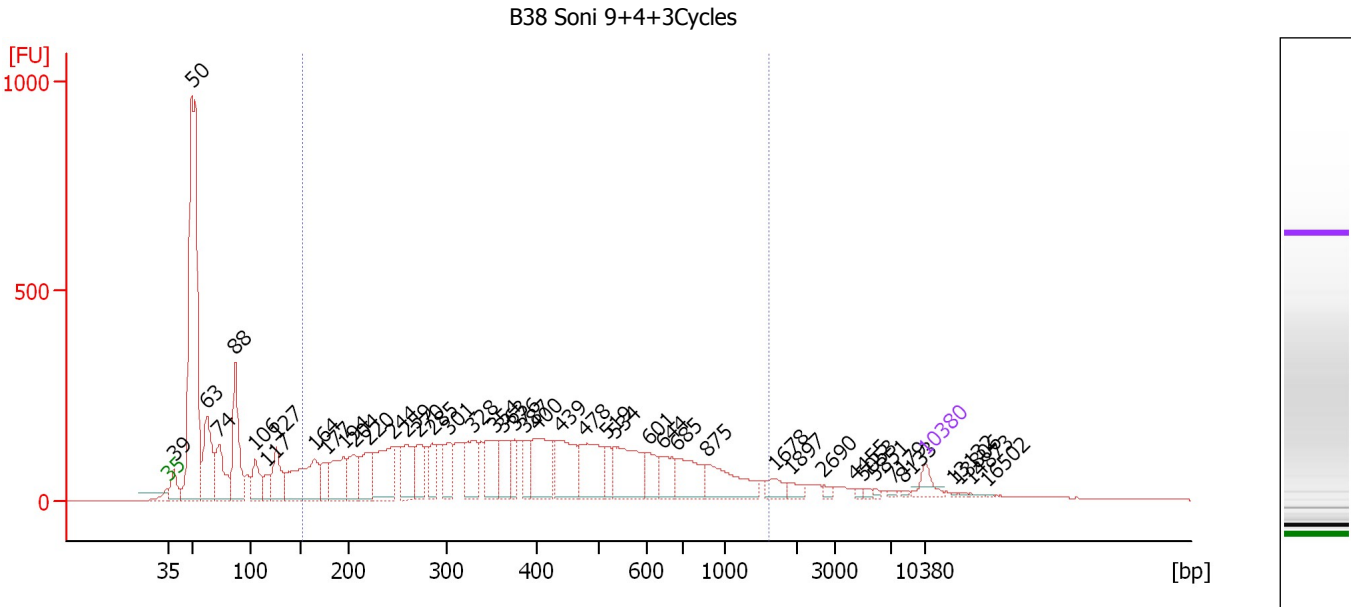
Region table for sample 7 : B17 Soni 7+5Cycles

From [bp]	To [bp]	Average Size [bp]	Molarity [pmol/l]	Conc. [pg/µl]	Corr. Area	% of Total	Size distribution in CV [%]	Color
200	1,886	558	14,836.4	3,800.47	3,663.2	30	59.0	

Assay Class: High Sensitivity DNA Assay
 Data Path: C:\...ents and Settings\Bioanalyzer\2012-07-11\2012-07-11_005.xad

Created: 7/11/2012 1:23:36 PM
 Modified: 7/11/2012 2:06:07 PM

Electropherogram Summary Continued ...



Overall Results for sample 8 : B38 Soni 9+4+3Cycles

Number of peaks found: 44 Corr. Area 1: 6,599.4
 Noise: 0.5

Peak table for sample 8 : B38 Soni 9+4+3Cycles

Peak	Size [bp]	Conc. [pg/µl]	Molarity [pmol/l]	Observations
1	35	125.00	5,411.3	Lower Marker
2	39	186.82	7,283.9	
3	50	3,078.57	93,050.9	
4	63	625.67	14,988.9	
5	74	422.62	8,660.9	
6	88	666.95	11,543.9	
7	106	246.04	3,522.9	
8	117	121.75	1,575.8	
9	127	331.17	3,963.1	
10	164	656.06	6,046.0	
11	177	170.67	1,461.8	
12	194	367.43	2,862.3	
13	204	245.13	1,818.6	
14	220	298.11	2,049.0	
15	244	478.78	2,977.9	
16	259	302.76	1,773.5	
17	270	244.15	1,368.8	
18	285	188.95	1,005.5	
19	301	221.15	1,113.2	
20	328	274.80	1,268.4	
21	354	274.51	1,174.1	
22	363	213.54	891.1	
23	376	152.85	616.3	
24	387	137.96	540.8	
25	400	417.87	1,583.5	
26	439	400.76	1,383.5	

Assay Class: High Sensitivity DNA Assay
 Data Path: C:\...ents and Settings\Bioanalyzer\2012-07-11\2012-07-11_005.xad

Created: 7/11/2012 1:23:36 PM
 Modified: 7/11/2012 2:06:07 PM

Electropherogram Summary Continued ...

... Peak table for sample 8 : B38 Soni 9+4+3Cycles

Peak	Size [bp]	Conc. [pg/μl]	Molarity [pmol/l]	Observations
27	478	417.85	1,324.4	
28	519	106.35	310.4	
29	534	445.45	1,264.1	
30	601	148.75	374.8	
31	644	158.35	372.6	
32	685	278.51	616.2	
33	875	301.78	522.7	
34	1,678	74.09	66.9	
35	1,897	44.26	35.4	
36	2,690	20.34	11.5	
37	4,455	13.24	4.5	
38	5,053	13.69	4.1	
39	5,851	10.72	2.8	
40	7,179	10.56	2.2	
41	8,133	7.64	1.4	
42	10,380	75.00	10.9	Upper Marker
43	13,132	0.00	0.0	
44	13,806	0.00	0.0	
45	14,873	0.00	0.0	
46	16,502	0.00	0.0	

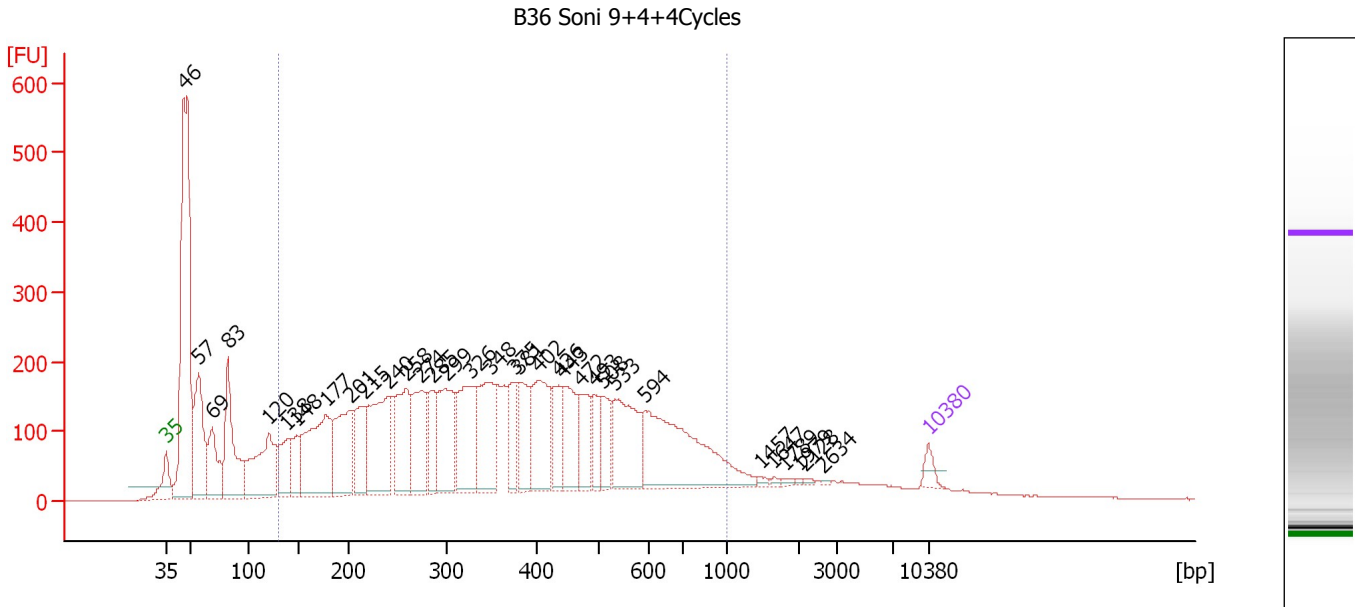
Region table for sample 8 : B38 Soni 9+4+3Cycles

From [bp]	To [bp]	Average Size [bp]	Molarity [pmol/l]	Conc. [pg/μl]	Corr. Area	% of Total	Size distribution in CV [%]	Color
152	1,609	446	37,296.0	7,768.90	6,599.4	60	56.6	

Assay Class: High Sensitivity DNA Assay
 Data Path: C:\...ents and Settings\Bioanalyzer\2012-07-11\2012-07-11_005.xad

Created: 7/11/2012 1:23:36 PM
 Modified: 7/11/2012 2:06:07 PM

Electropherogram Summary Continued ...



Overall Results for sample 9 : B36 Soni 9+4+4Cycles

Number of peaks found: 33 Corr. Area 1: 7,563.9
 Noise: 0.4

Peak table for sample 9 : B36 Soni 9+4+4Cycles

Peak	Size [bp]	Conc. [pg/µl]	Molarity [pmol/l]	Observations
1	35	125.00	5,411.3	Lower Marker
2	46	3,695.06	121,588.8	
3	57	1,104.93	29,192.3	
4	69	653.23	14,408.5	
5	83	1,084.89	19,924.4	
6	120	1,109.11	13,973.2	
7	138	482.14	5,295.5	
8	148	322.09	3,292.5	
9	177	1,456.32	12,465.6	
10	201	896.46	6,769.4	
11	215	574.48	4,042.0	
12	240	1,110.33	7,008.7	
13	258	822.17	4,823.6	
14	274	769.77	4,263.8	
15	285	402.31	2,136.6	
16	299	861.63	4,368.9	
17	326	874.23	4,058.7	
18	348	834.37	3,630.5	
19	375	369.81	1,493.3	
20	381	429.40	1,707.6	
21	402	823.32	3,100.9	
22	436	348.44	1,212.2	
23	443	529.90	1,812.7	
24	472	400.47	1,286.7	
25	493	282.96	870.0	
26	508	304.73	908.3	

Assay Class: High Sensitivity DNA Assay
 Data Path: C:\...ents and Settings\Bioanalyzer\2012-07-11\2012-07-11_005.xad

Created: 7/11/2012 1:23:36 PM
 Modified: 7/11/2012 2:06:07 PM

Electropherogram Summary Continued ...

... Peak table for sample 9 : B36 Soni 9+4+4Cycles

Peak	Size [bp]	Conc. [pg/μl]	Molarity [pmol/l]	Observations
27	533	774.70	2,204.2	
28	594	1,444.31	3,686.6	
29	1,457	23.05	24.0	
30	1,647	16.58	15.3	
31	1,789	18.38	15.6	
32	1,979	9.62	7.4	
33	2,128	13.25	9.4	
34	2,634	7.51	4.3	
35	10,380	75.00	10.9	Upper Marker

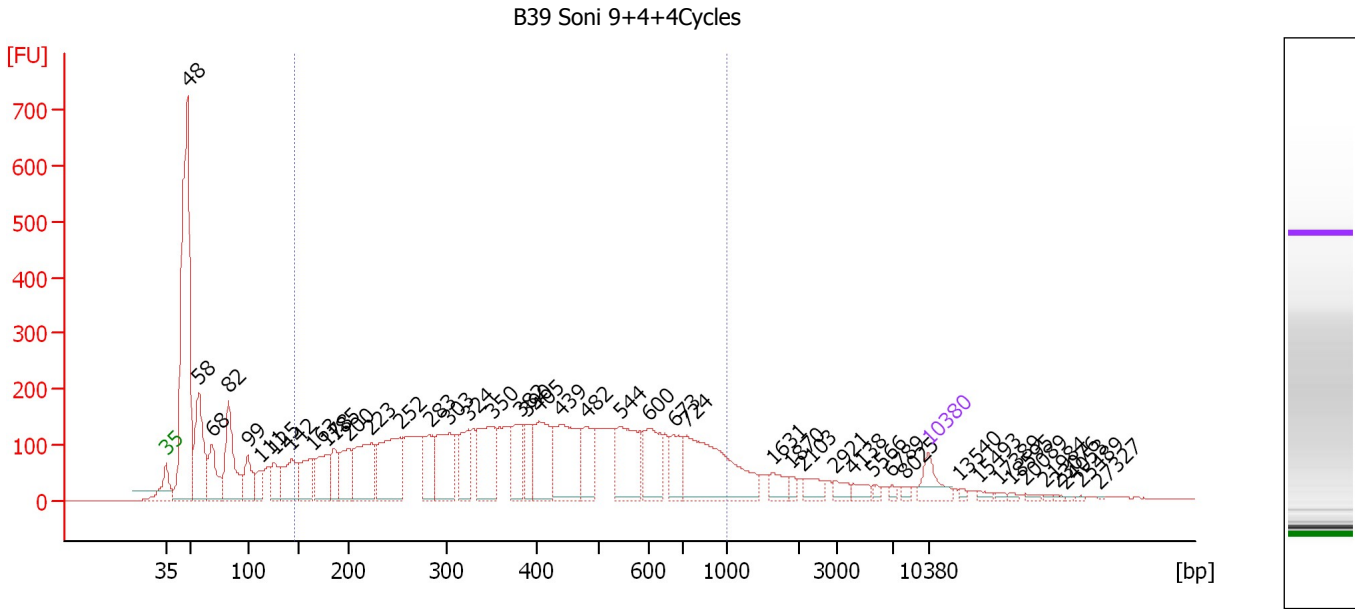
Region table for sample 9 : B36 Soni 9+4+4Cycles

From [bp]	To [bp]	Average Size [bp]	Molarity [pmol/l]	Conc. [pg/μl]	Corr. Area	% of Total	Size distribution in CV [%]	Color
130	1,000	390	91,851.8	17,430.73	7,563.9	70	45.1	

Assay Class: High Sensitivity DNA Assay
 Data Path: C:\...ents and Settings\Bioanalyzer\2012-07-11\2012-07-11_005.xad

Created: 7/11/2012 1:23:36 PM
 Modified: 7/11/2012 2:06:07 PM

Electropherogram Summary Continued ...



Overall Results for sample 10 : B39 Soni 9+4+4Cycles

Number of peaks found: 45 Corr. Area 1: 5,977.4
 Noise: 0.4

Peak table for sample 10 : B39 Soni 9+4+4Cycles

Peak	Size [bp]	Conc. [pg/µl]	Molarity [pmol/l]	Observations
1	35	125.00	5,411.3	Lower Marker
2	48	1,696.34	53,231.8	
3	58	464.00	12,213.4	
4	68	247.45	5,473.8	
5	82	416.81	7,663.4	
6	99	173.15	2,641.9	
7	111	95.39	1,298.9	
8	125	146.86	1,779.2	
9	142	217.46	2,315.3	
10	163	203.36	1,895.5	
11	178	220.96	1,884.5	
12	185	143.40	1,173.2	
13	200	183.55	1,392.5	
14	223	358.49	2,437.8	
15	252	421.08	2,533.5	
16	283	164.42	881.4	
17	303	301.22	1,506.1	
18	324	166.79	779.0	
19	350	295.07	1,276.2	
20	382	168.92	669.9	
21	390	116.98	454.6	
22	405	269.48	1,008.3	
23	439	367.27	1,266.4	
24	482	175.45	551.3	
25	544	291.27	811.2	
26	600	202.68	512.1	

Assay Class: High Sensitivity DNA Assay
 Data Path: C:\...ents and Settings\Bioanalyzer\2012-07-11\2012-07-11_005.xad

Created: 7/11/2012 1:23:36 PM
 Modified: 7/11/2012 2:06:07 PM

Electropherogram Summary Continued ...

... Peak table for sample 10 : B39 Soni 9+4+4Cycles

Peak	Size [bp]	Conc. [pg/μl]	Molarity [pmol/l]	Observations
27	673	133.97	301.5	
28	724	508.64	1,064.0	
29	1,631	54.15	50.3	
30	1,870	19.71	16.0	
31	2,103	48.34	34.8	
32	2,921	33.37	17.3	
33	4,138	29.80	10.9	
34	5,566	13.35	3.6	
35	6,789	11.44	2.6	
36	8,025	13.02	2.5	
37	10,380	75.00	10.9	Upper Marker
38	13,540	0.00	0.0	
39	15,493	0.00	0.0	
40	17,389	0.00	0.0	
41	18,595	0.00	0.0	
42	20,089	0.00	0.0	
43	21,984	0.00	0.0	
44	23,076	0.00	0.0	
45	24,053	0.00	0.0	
46	25,489	0.00	0.0	
47	27,327	0.00	0.0	

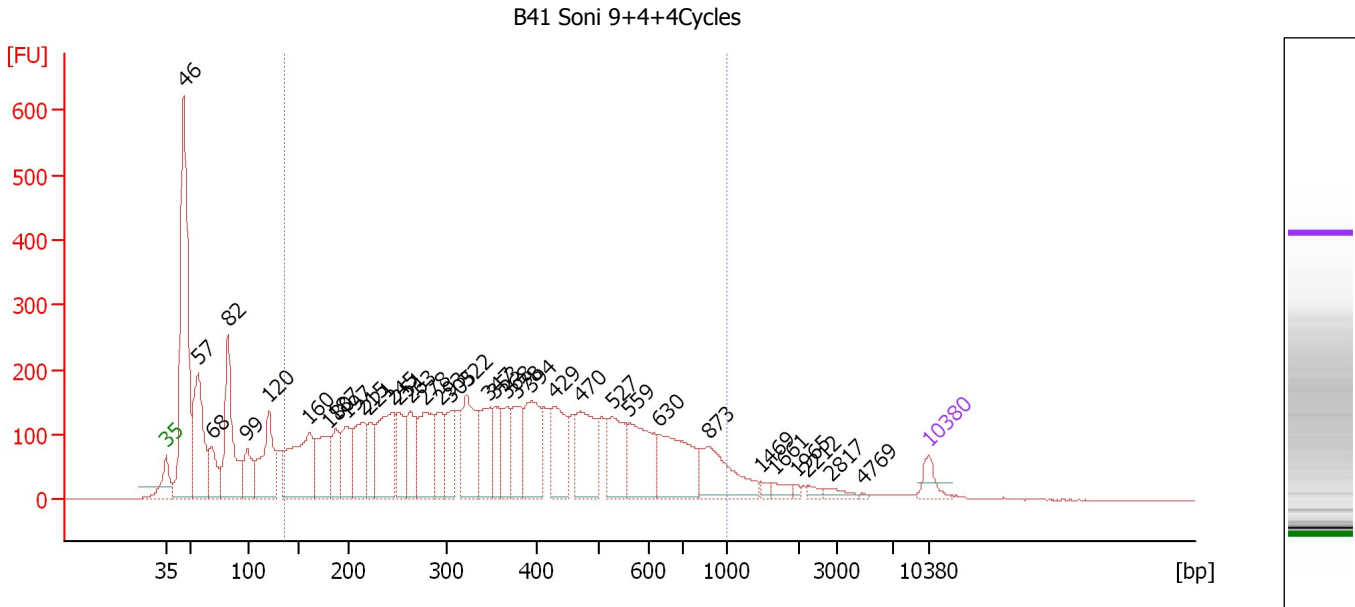
Region table for sample 10 : B39 Soni 9+4+4Cycles

From [bp]	To [bp]	Average Size [bp]	Molarity [pmol/l]	Conc. [pg/μl]	Corr. Area	% of Total	Size distribution in CV [%]	Color
145	1,000	423	27,724.9	5,743.13	5,977.4	63	44.7	

Assay Class: High Sensitivity DNA Assay
 Data Path: C:\...ents and Settings\Bioanalyzer\2012-07-11\2012-07-11_005.xad

Created: 7/11/2012 1:23:36 PM
 Modified: 7/11/2012 2:06:07 PM

Electropherogram Summary Continued ...



Overall Results for sample 11 : B41 Soni 9+4+4Cycles

Number of peaks found: 36 Corr. Area 1: 6,458.8
 Noise: 0.4

Peak table for sample 11 : B41 Soni 9+4+4Cycles

Peak	Size [bp]	Conc. [pg/μl]	Molarity [pmol/l]	Observations
1	35	125.00	5,411.3	Lower Marker
2	46	2,154.92	71,258.3	
3	57	841.64	22,492.9	
4	68	320.73	7,127.9	
5	82	839.92	15,490.5	
6	99	269.63	4,142.2	
7	120	621.12	7,819.1	
8	160	782.75	7,398.2	
9	180	426.21	3,584.8	
10	187	259.65	2,108.8	
11	197	342.64	2,634.6	
12	215	394.21	2,780.1	
13	221	214.60	1,472.6	
14	245	605.35	3,749.9	
15	251	290.36	1,755.9	
16	263	298.67	1,720.4	
17	278	497.79	2,713.9	
18	293	266.94	1,378.6	
19	305	248.87	1,235.8	
20	322	465.00	2,187.6	
21	347	333.73	1,455.4	
22	353	231.90	994.5	
23	368	252.77	1,041.8	
24	378	276.97	1,110.1	
25	394	453.89	1,747.0	
26	429	394.76	1,393.5	

Assay Class: High Sensitivity DNA Assay
 Data Path: C:\...ents and Settings\Bioanalyzer\2012-07-11\2012-07-11_005.xad

Created: 7/11/2012 1:23:36 PM
 Modified: 7/11/2012 2:06:07 PM

Electropherogram Summary Continued ...

... Peak table for sample 11 : B41 Soni 9+4+4Cycles

Peak	Size [bp]	Conc. [pg/μl]	Molarity [pmol/l]	Observations
27	470	466.95	1,504.2	
28	527	351.12	1,009.1	
29	559	450.33	1,221.3	
30	630	467.07	1,124.1	
31	873	363.40	630.5	
32	1,469	29.10	30.0	
33	1,661	44.04	40.2	
34	1,965	16.57	12.8	
35	2,212	25.53	17.5	
36	2,817	40.36	21.7	
37	4,769	6.18	2.0	
38	10,380	75.00	10.9	Upper Marker

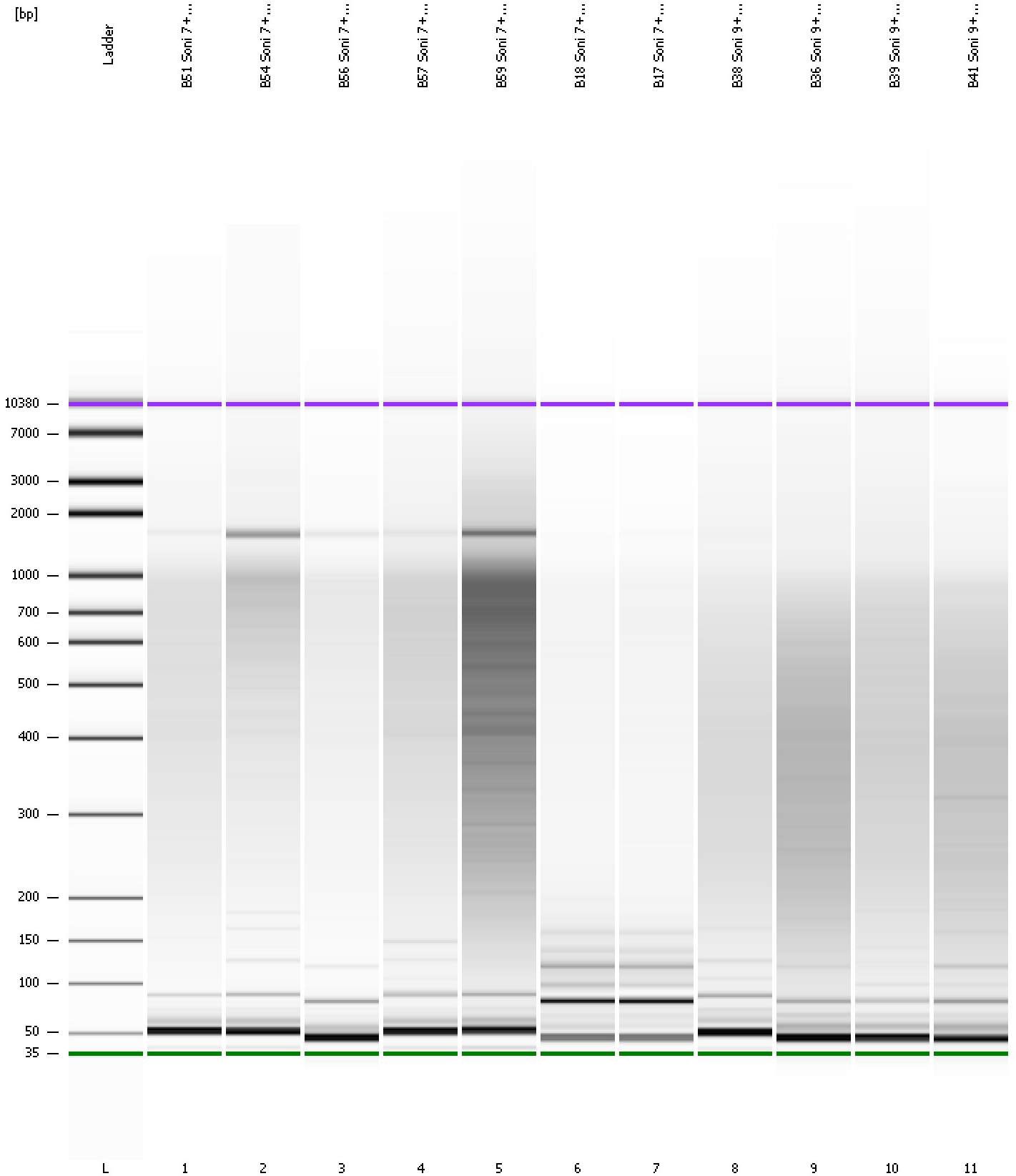
Region table for sample 11 : B41 Soni 9+4+4Cycles

From [bp]	To [bp]	Average Size [bp]	Molarity [pmol/l]	Conc. [pg/μl]	Corr. Area	% of Total	Size distribution in CV [%]	Color
135	1,000	394	50,954.0	9,772.46	6,458.8	69	45.8	

Assay Class: High Sensitivity DNA Assay
Data Path: C:\...ents and Settings\Bioanalyzer\2012-07-11\2012-07-11_005.xad

Created: 7/11/2012 1:23:36 PM
Modified: 7/11/2012 2:06:07 PM

Gel Image



Assay Class: High Sensitivity DNA Assay
 Data Path: C:\...ents and Settings\Bioanalyzer\2012-07-11\2012-07-11_005.xad

Created: 7/11/2012 1:23:36 PM
 Modified: 7/11/2012 2:06:07 PM

Run Logbook

Description	Number	Source	Category	Sub Category	Time	Time Zone	User	Host
Run ended on port 1 (Number of wells acquired: 12)		Instrument	Run		7/11/2012 2:04:56 PM	(GMT --07:00) Pacific Standard Time	UC Davis	D8XSMGH1
Run started on port 1 (File: C:\Documents and Settings\Bioanalyzer\2012-07-11\2012-07-11_005.xad)		Instrument	Run		7/11/2012 1:23:42 PM	(GMT --07:00) Pacific Standard Time	UC Davis	D8XSMGH1
Product Number : G2938B		Instrument	Run		7/11/2012 1:23:42 PM	(GMT --07:00) Pacific Standard Time	UC Davis	D8XSMGH1
Name :		Instrument	Run		7/11/2012 1:23:42 PM	(GMT --07:00) Pacific Standard Time	UC Davis	D8XSMGH1
Vendor : Agilent Technologies		Instrument	Run		7/11/2012 1:23:42 PM	(GMT --07:00) Pacific Standard Time	UC Davis	D8XSMGH1
Serial# : DE13701086		Instrument	Run		7/11/2012 1:23:42 PM	(GMT --07:00) Pacific Standard Time	UC Davis	D8XSMGH1
Firmware : C.01.069		Instrument	Run		7/11/2012 1:23:42 PM	(GMT --07:00) Pacific Standard Time	UC Davis	D8XSMGH1
Cartridge : Electrode		Instrument	Run		7/11/2012 1:23:42 PM	(GMT --07:00) Pacific Standard Time	UC Davis	D8XSMGH1