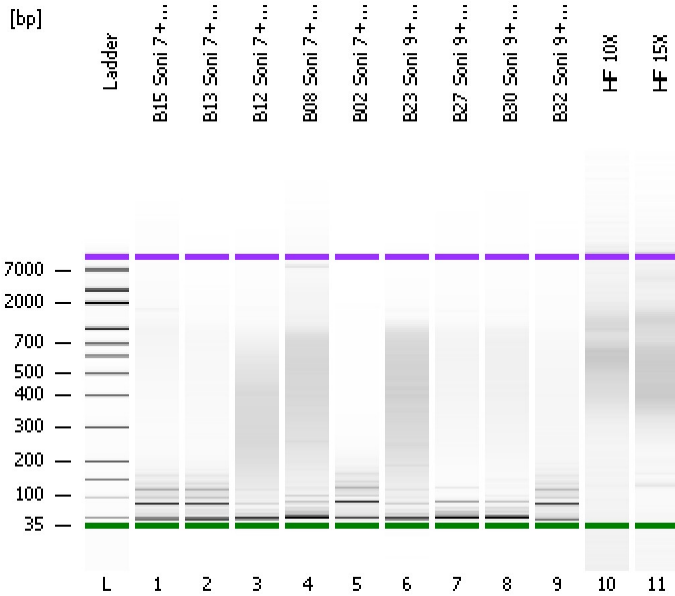


Assay Class: High Sensitivity DNA Assay
Data Path: C:\...ents and Settings\Bioanalyzer\2012-07-11\2012-07-11_006.xad

Created: 7/11/2012 2:56:20 PM
Modified: 7/11/2012 3:40:07 PM

Electrophoresis File Run Summary



Instrument Information:

Instrument Name: DE13701086 Firmware: C.01.069
Serial#: DE13701086 Type: G2938B

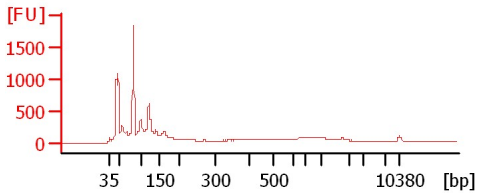
Assay Information:

Assay Origin Path: C:\Program Files\Agilent\2100 bioanalyzer\2100 expert\assays\dsDNA\High Sensitivity DNA.xsy
Assay Class: High Sensitivity DNA Assay
Version: 1.03
Assay Comments: Copyright © 2003-2010 Agilent Technologies

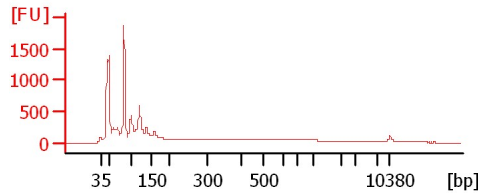
Chip Information:

Chip Lot #:
Reagent Kit Lot #:
Chip Comments:

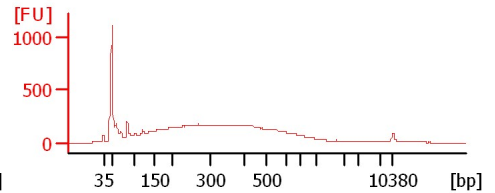
B15 Soni 7+5Cycles



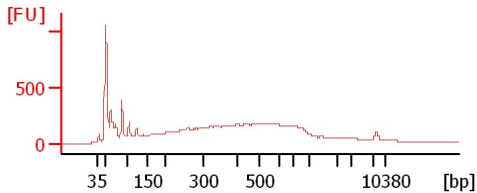
B13 Soni 7+5Cycles



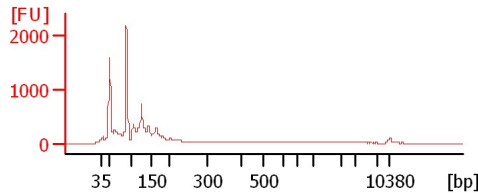
B12 Soni 7+5Cycles



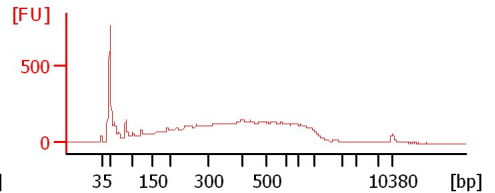
B08 Soni 7+5Cycles



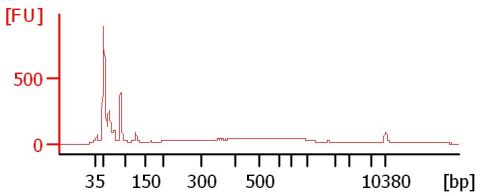
B02 Soni 7+5Cycles



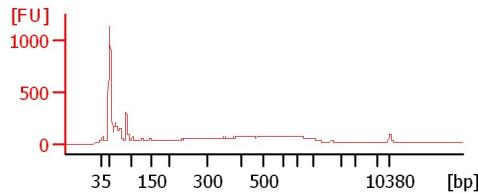
B23 Soni 9+4+3+3Cycles



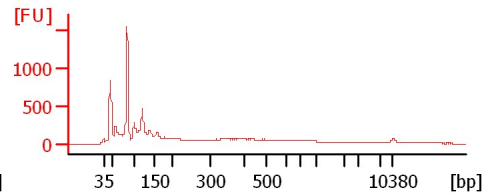
B27 Soni 9+4+3Cycles



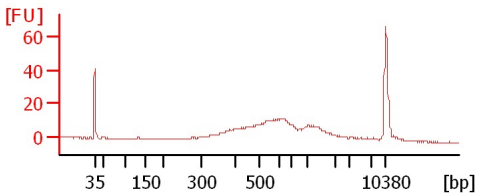
B30 Soni 9+4+3Cycles



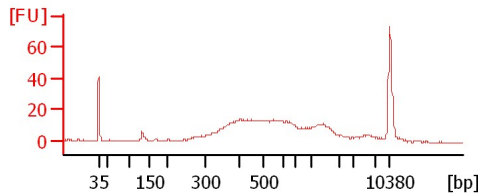
B32 Soni 9+4+3Cycles



HF 10X



HF 15X



Assay Class: High Sensitivity DNA Assay
 Data Path: C:\...ents and Settings\Bioanalyzer\2012-07-11\2012-07-11_006.xad

Created: 7/11/2012 2:56:20 PM
 Modified: 7/11/2012 3:40:07 PM

Electrophoresis File Run Summary (Chip Summary)

Sample Name	Sample Comment	Rest. Digest	Status	Observation	Result Label	Result Color
B15 Soni 7+5Cycles		<input type="checkbox"/>	✓			
B13 Soni 7+5Cycles		<input type="checkbox"/>	✓			
B12 Soni 7+5Cycles		<input type="checkbox"/>	✓			
B08 Soni 7+5Cycles		<input type="checkbox"/>	✓			
B02 Soni 7+5Cycles		<input type="checkbox"/>	✓			
B23 Soni 9+4+3+3Cycles		<input type="checkbox"/>	✓			
B27 Soni 9+4+3Cycles		<input type="checkbox"/>	✓			
B30 Soni 9+4+3Cycles		<input type="checkbox"/>	✓			
B32 Soni 9+4+3Cycles		<input type="checkbox"/>	✓			
HF 10X		<input type="checkbox"/>	✓			
HF 15X		<input type="checkbox"/>	✓			
Ladder		<input type="checkbox"/>	✓			

Chip Lot #

Reagent Kit Lot #

Chip Comments :

Assay Class: High Sensitivity DNA Assay
Data Path: C:\...ents and Settings\Bioanalyzer\2012-07-11\2012-07-11_006.xad

Created: 7/11/2012 2:56:20 PM
Modified: 7/11/2012 3:40:07 PM

Electrophoresis Assay Details

General Analysis Settings

Number of Available Sample and Ladder Wells (Max.) : 12
Minimum Visible Range [s] : 32
Maximum Visible Range [s] : 138
Start Analysis Time Range [s] : 33
End Analysis Time Range [s] : 137.5
Ladder Concentration [pg/μl] : 1950
Uses Standard Area for Ladder Fragments
Lower Marker Concentration [pg/μl] : 125
Upper Marker Concentration [pg/μl] : 75
Used Upper Marker for Quantitation
Standard Curve Fit is Point to Point
Show Data Aligned to Lower and Upper Marker

Integrator Settings

Integration Start Time [s] : 33.05
Integration End Time [s] : 137
Slope Threshold : 0.8
Height Threshold [FU] : 5
Area Threshold : 0.1
Width Threshold [s] : 0.6
Baseline Plateau [s] : 0.5

Filter Settings

Filter Width [s] : 0.5
Polynomial Order : 4

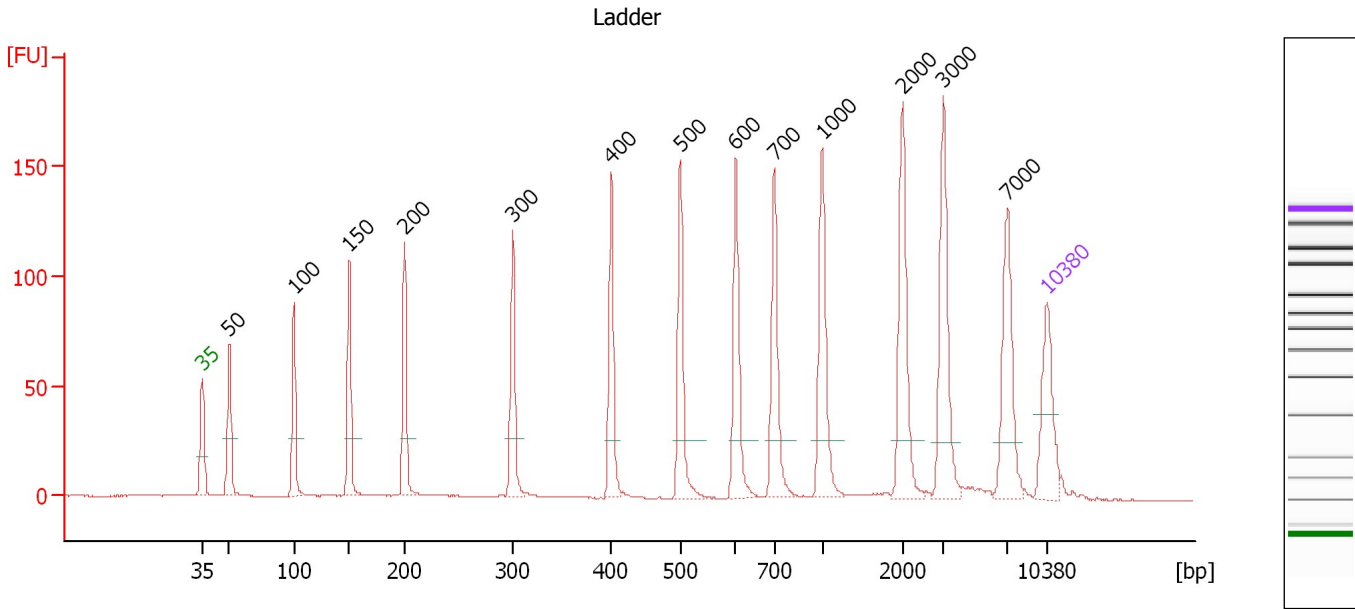
Ladder

Ladder Peak	Size	Area
1	35	160
2	50	210
3	100	208
4	150	221
5	200	242
6	300	270
7	400	305
8	500	306
9	600	336
10	700	321
11	1000	366
12	2000	413
13	3000	411
14	7000	400
15	10380	214

Assay Class: High Sensitivity DNA Assay
 Data Path: C:\...ents and Settings\Bioanalyzer\2012-07-11\2012-07-11_006.xad

Created: 7/11/2012 2:56:20 PM
 Modified: 7/11/2012 3:40:07 PM

Electropherogram Summary



Overall Results for Ladder

Noise: 0.1

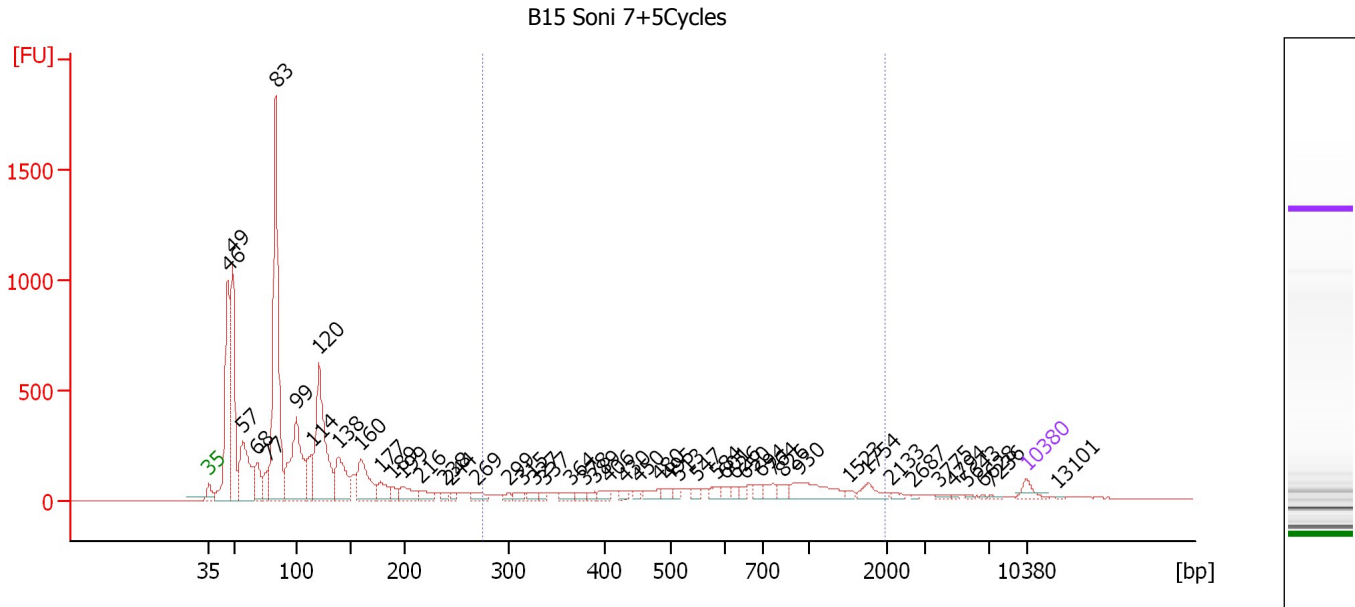
Peak table for Ladder

Peak	Size [bp]	Conc. [pg/μl]	Molarity [pmol/l]	Observations
1	35	125.00	5,411.3	Lower Marker
2	50	150.00	4,545.5	Ladder Peak
3	100	150.00	2,272.7	Ladder Peak
4	150	150.00	1,515.2	Ladder Peak
5	200	150.00	1,136.4	Ladder Peak
6	300	150.00	757.6	Ladder Peak
7	400	150.00	568.2	Ladder Peak
8	500	150.00	454.5	Ladder Peak
9	600	150.00	378.8	Ladder Peak
10	700	150.00	324.7	Ladder Peak
11	1,000	150.00	227.3	Ladder Peak
12	2,000	150.00	113.6	Ladder Peak
13	3,000	150.00	75.8	Ladder Peak
14	7,000	150.00	32.5	Ladder Peak
15	10,380	75.00	10.9	Upper Marker

Assay Class: High Sensitivity DNA Assay
 Data Path: C:\...ents and Settings\Bioanalyzer\2012-07-11\2012-07-11_006.xad

Created: 7/11/2012 2:56:20 PM
 Modified: 7/11/2012 3:40:07 PM

Electropherogram Summary Continued ...



Overall Results for sample 1 : B15 Soni 7+5Cycles

Number of peaks found: 50 Corr. Area 1: 1,959.8
 Noise: 0.2

Peak table for sample 1 : B15 Soni 7+5Cycles

Peak	Size [bp]	Conc. [pg/μl]	Molarity [pmol/l]	Observations
1	35	125.00	5,411.3	Lower Marker
2	46	1,924.13	63,247.6	
3	49	1,826.62	56,634.5	
4	57	1,059.29	28,404.2	
5	68	393.57	8,773.7	
6	77	276.88	5,426.7	
7	83	3,420.06	62,566.0	
8	99	1,464.19	22,323.5	
9	114	417.55	5,545.1	
10	120	1,826.25	23,055.2	
11	138	649.96	7,121.1	
12	160	633.51	6,017.0	
13	177	232.73	1,988.8	
14	189	89.13	713.9	
15	199	225.73	1,722.7	
16	216	121.20	849.3	
17	238	51.35	326.2	
18	244	42.16	261.7	
19	269	105.28	593.4	
20	299	48.21	244.1	
21	315	61.43	295.8	
22	327	59.01	273.5	
23	337	42.74	191.9	
24	364	74.58	310.4	
25	378	52.99	212.4	
26	389	46.23	180.0	

Assay Class: High Sensitivity DNA Assay
 Data Path: C:\...ents and Settings\Bioanalyzer\2012-07-11\2012-07-11_006.xad


Created: 7/11/2012 2:56:20 PM
 Modified: 7/11/2012 3:40:07 PM

Electropherogram Summary Continued ...

... Peak table for sample 1 : B15 Soni 7+5Cycles

Peak	Size [bp]	Conc. [pg/µl]	Molarity [pmol/l]	Observations
27	406	76.16	284.3	
28	430	47.24	166.6	
29	450	39.26	132.0	
30	480	96.92	306.0	
31	495	63.14	193.3	
32	513	54.57	161.3	
33	547	59.11	163.7	
34	584	67.84	176.1	
35	601	60.12	151.6	
36	626	41.65	100.8	
37	650	46.50	108.4	
38	694	76.55	167.2	
39	764	92.42	183.3	
40	826	86.42	158.5	
41	930	307.97	501.7	
42	1,523	30.99	30.8	
43	1,754	109.40	94.5	
44	2,133	25.40	18.0	
45	2,687	12.15	6.9	
46	3,775	20.23	8.1	
47	4,794	9.30	2.9	
48	5,643	8.98	2.4	
49	6,628	7.45	1.7	
50	7,236	12.68	2.7	
51	10,380	75.00	10.9	Upper Marker
52	13,101	0.00	0.0	

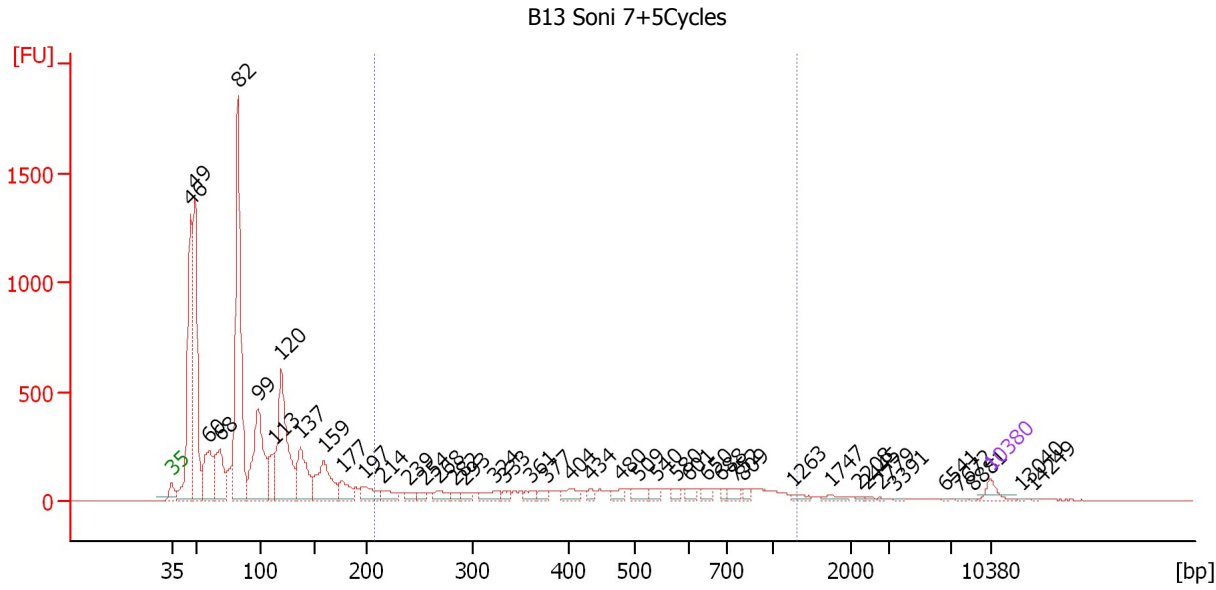
Region table for sample 1 : B15 Soni 7+5Cycles

From [bp]	To [bp]	Average Size [bp]	Molarity [pmol/l]	Conc. [pg/µl]	Corr. Area	% of Total	Size distribution in CV [%]	Color
274	1,971	731	6,244.4	2,138.24	1,959.8	17	56.4	

Assay Class: High Sensitivity DNA Assay
 Data Path: C:\...ents and Settings\Bioanalyzer\2012-07-11\2012-07-11_006.xad

Created: 7/11/2012 2:56:20 PM
 Modified: 7/11/2012 3:40:07 PM

Electropherogram Summary Continued ...



Overall Results for sample 2 : B13 Soni 7+5Cycles

Number of peaks found: 44 Corr. Area 1: 2,193.3
 Noise: 0.9

Peak table for sample 2 : B13 Soni 7+5Cycles

Peak	Size [bp]	Conc. [pg/μl]	Molarity [pmol/l]	Observations
1	35	125.00	5,411.3	Lower Marker
2	46	2,133.70	70,100.7	
3	49	2,231.69	69,491.0	
4	60	691.75	17,606.8	
5	68	665.89	14,871.7	
6	82	3,084.13	56,792.9	
7	99	1,380.07	21,141.4	
8	113	400.78	5,350.6	
9	120	1,585.04	20,080.3	
10	137	663.83	7,319.4	
11	159	695.68	6,616.6	
12	177	233.89	2,006.5	
13	197	211.93	1,626.0	
14	214	136.73	967.6	
15	239	80.85	512.3	
16	254	59.57	355.7	
17	268	112.50	636.4	
18	282	54.38	291.7	
19	293	60.86	314.3	
20	324	124.78	583.1	
21	333	55.27	251.2	
22	361	79.56	334.0	
23	377	63.65	255.5	
24	404	115.89	434.9	
25	434	52.64	183.7	
26	480	77.08	243.2	

Assay Class: High Sensitivity DNA Assay
 Data Path: C:\...ents and Settings\Bioanalyzer\2012-07-11\2012-07-11_006.xad


Created: 7/11/2012 2:56:20 PM
 Modified: 7/11/2012 3:40:07 PM

Electropherogram Summary Continued ...

... Peak table for sample 2 : B13 Soni 7+5Cycles

Peak	Size [bp]	Conc. [pg/μl]	Molarity [pmol/l]	Observations
27	509	96.56	287.5	
28	540	59.23	166.0	
29	580	42.15	110.1	
30	601	55.20	139.2	
31	650	63.84	148.8	
32	688	36.28	79.9	
33	752	65.03	131.0	
34	809	36.96	69.2	
35	1,263	37.50	45.0	
36	1,747	39.17	34.0	
37	2,208	8.88	6.1	
38	2,445	9.12	5.7	
39	2,779	6.75	3.7	
40	3,391	9.61	4.3	
41	6,541	5.27	1.2	
42	7,672	6.11	1.2	
43	8,881	4.18	0.7	
44	10,380	75.00	10.9	Upper Marker
45	13,040	0.00	0.0	
46	14,249	0.00	0.0	

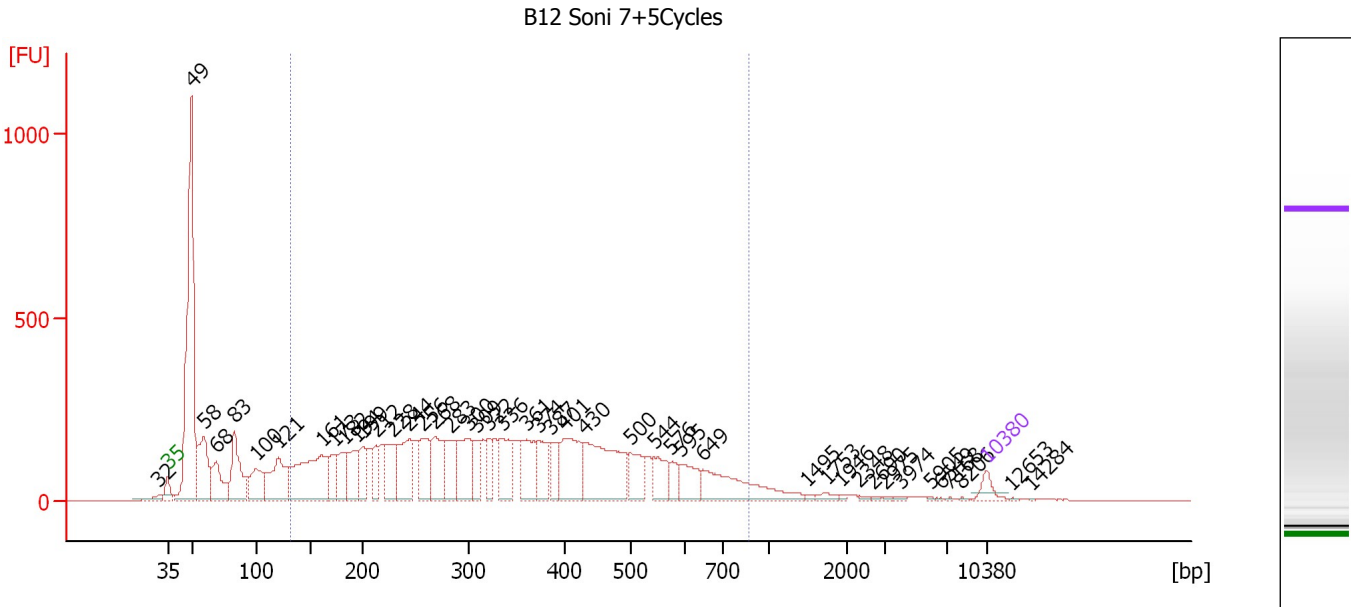
Region table for sample 2 : B13 Soni 7+5Cycles

From [bp]	To [bp]	Average Size [bp]	Molarity [pmol/l]	Conc. [pg/μl]	Corr. Area	% of Total	Size distribution in CV [%]	Color
206	1,324	505	9,250.7	2,322.35	2,193.3	18	46.9	

Assay Class: High Sensitivity DNA Assay
 Data Path: C:\...ents and Settings\Bioanalyzer\2012-07-11\2012-07-11_006.xad

Created: 7/11/2012 2:56:20 PM
 Modified: 7/11/2012 3:40:07 PM

Electropherogram Summary Continued ...



Overall Results for sample 3 : B12 Soni 7+5Cycles

Number of peaks found: 45 Corr. Area 1: 7,646.8
 Noise: 0.6

Peak table for sample 3 : B12 Soni 7+5Cycles

Peak	Size [bp]	Conc. [pg/μl]	Molarity [pmol/l]	Observations
1	32	0.00	0.0	
2	35	125.00	5,411.3	Lower Marker
3	49	2,816.49	87,165.7	
4	58	668.69	17,348.7	
5	68	416.98	9,259.0	
6	83	613.06	11,192.7	
7	100	401.26	6,080.9	
8	121	618.61	7,760.1	
9	161	1,067.35	10,022.5	
10	173	252.12	2,210.7	
11	182	306.45	2,556.2	
12	194	324.93	2,542.9	
13	199	267.30	2,031.8	
14	212	231.89	1,656.5	
15	228	391.53	2,600.8	
16	244	519.14	3,229.6	
17	256	361.88	2,138.9	
18	268	459.68	2,598.2	
19	283	316.76	1,695.9	
20	300	451.87	2,285.9	
21	309	205.10	1,006.3	
22	322	201.02	946.8	
23	336	356.64	1,609.5	
24	361	399.24	1,676.2	
25	374	300.78	1,219.3	
26	387	213.96	837.3	

Assay Class: High Sensitivity DNA Assay
 Data Path: C:\...ents and Settings\Bioanalyzer\2012-07-11\2012-07-11_006.xad


Created: 7/11/2012 2:56:20 PM
 Modified: 7/11/2012 3:40:07 PM

Electropherogram Summary Continued ...

... Peak table for sample 3 : B12 Soni 7+5Cycles

Peak	Size [bp]	Conc. [pg/µl]	Molarity [pmol/l]	Observations
27	401	546.58	2,065.6	
28	430	842.38	2,966.3	
29	500	275.70	835.6	
30	544	225.89	629.7	
31	576	118.18	311.0	
32	595	216.90	552.7	
33	649	540.31	1,262.3	
34	1,495	15.51	15.7	
35	1,753	34.98	30.2	
36	1,946	8.98	7.0	
37	2,348	11.57	7.5	
38	2,690	8.53	4.8	
39	2,975	9.82	5.0	
40	3,974	9.83	3.7	
41	5,905	5.34	1.4	
42	6,549	4.88	1.1	
43	7,168	5.83	1.2	
44	8,206	6.05	1.1	
45	10,380	75.00	10.9	Upper Marker
46	12,653	0.00	0.0	
47	14,284	0.00	0.0	

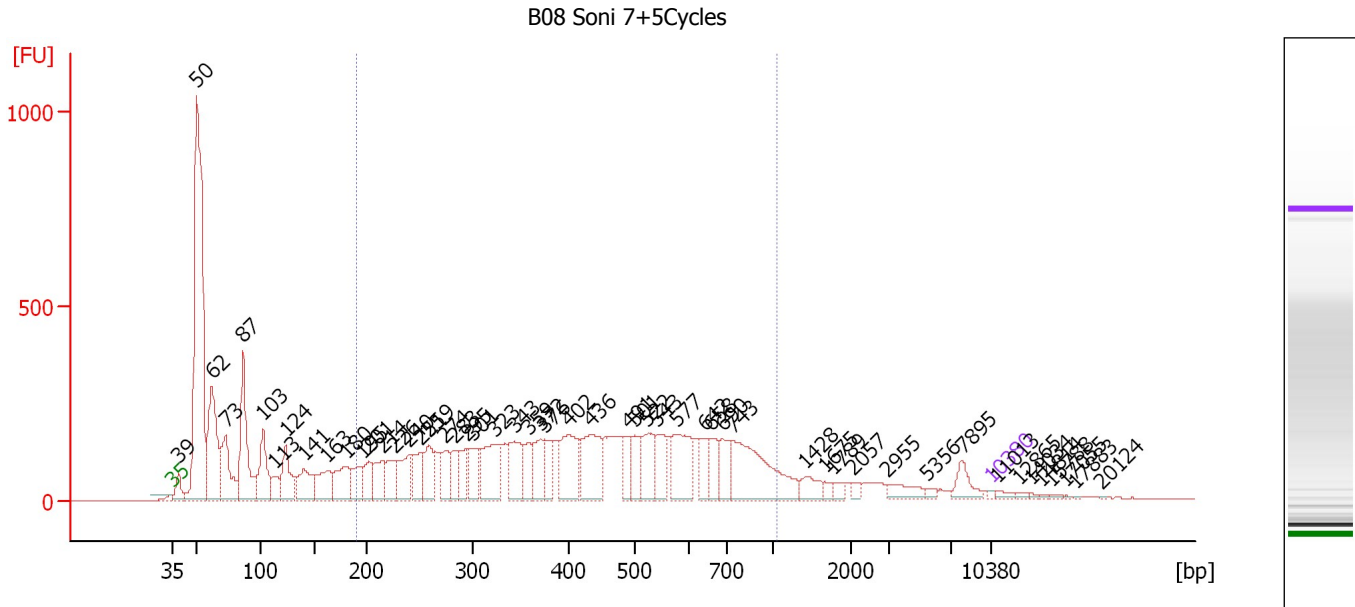
Region table for sample 3 : B12 Soni 7+5Cycles

From [bp]	To [bp]	Average Size [bp]	Molarity [pmol/l]	Conc. [pg/µl]	Corr. Area	% of Total	Size distribution in CV [%]	Color
132	877	358	58,064.8	10,472.24	7,646.8	68	41.9	

Assay Class: High Sensitivity DNA Assay
 Data Path: C:\...ents and Settings\Bioanalyzer\2012-07-11\2012-07-11_006.xad

Created: 7/11/2012 2:56:20 PM
 Modified: 7/11/2012 3:40:07 PM

Electropherogram Summary Continued ...



Overall Results for sample 4 : B08 Soni 7+5Cycles

Number of peaks found: 53 Corr. Area 1: 6,893.7
 Noise: 0.3

Peak table for sample 4 : B08 Soni 7+5Cycles

Peak	Size [bp]	Conc. [pg/μl]	Molarity [pmol/l]	Observations
1	35	125.00	5,411.3	Lower Marker
2	39	1,295.90	50,140.0	
3	50	24,083.55	733,913.8	
4	62	7,160.27	176,361.3	
5	73	4,119.84	86,058.0	
6	87	6,553.26	114,603.8	
7	103	3,443.65	50,697.8	
8	113	1,081.07	14,473.3	
9	124	2,794.12	34,157.1	
10	141	2,497.44	26,862.5	
11	163	2,391.03	22,236.9	
12	180	2,450.77	20,647.7	
13	195	1,859.48	14,469.6	
14	201	1,520.21	11,436.0	
15	214	1,845.47	13,064.8	
16	226	1,768.58	11,878.8	
17	240	2,250.94	14,224.1	
18	251	1,849.06	11,170.5	
19	259	2,096.18	12,277.5	
20	274	1,560.09	8,629.3	
21	283	1,361.95	7,295.4	
22	295	1,349.43	6,932.1	
23	301	1,642.38	8,273.0	
24	323	3,444.92	16,174.5	
25	343	2,454.95	10,829.9	
26	359	1,383.45	5,838.4	

Assay Class: High Sensitivity DNA Assay
 Data Path: C:\...ents and Settings\Bioanalyzer\2012-07-11\2012-07-11_006.xad


Created: 7/11/2012 2:56:20 PM
 Modified: 7/11/2012 3:40:07 PM

Electropherogram Summary Continued ...

... Peak table for sample 4 : B08 Soni 7+5Cycles

Peak	Size [bp]	Conc. [pg/μl]	Molarity [pmol/l]	Observations
27	372	1,939.08	7,904.0	
28	376	1,149.96	4,629.9	
29	402	3,221.00	12,152.1	
30	436	3,431.63	11,938.9	
31	491	1,064.27	3,284.8	
32	501	1,476.79	4,466.0	
33	522	2,038.88	5,923.3	
34	543	1,558.34	4,347.7	
35	577	3,079.63	8,087.9	
36	642	1,092.58	2,580.0	
37	658	1,353.70	3,118.5	
38	690	1,270.00	2,789.3	
39	743	5,376.10	10,957.7	
40	1,428	723.18	767.2	
41	1,675	262.55	237.4	
42	1,789	318.26	269.6	
43	2,057	213.14	157.0	
44	2,955	727.45	373.0	
45	5,356	164.88	46.6	
46	7,895	809.46	155.3	
47	10,380	75.00	10.9	Upper Marker
48	11,013	0.00	0.0	
49	12,865	0.00	0.0	
50	14,034	0.00	0.0	
51	14,814	0.00	0.0	
52	15,788	0.00	0.0	
53	17,055	0.00	0.0	
54	17,883	0.00	0.0	
55	20,124	0.00	0.0	

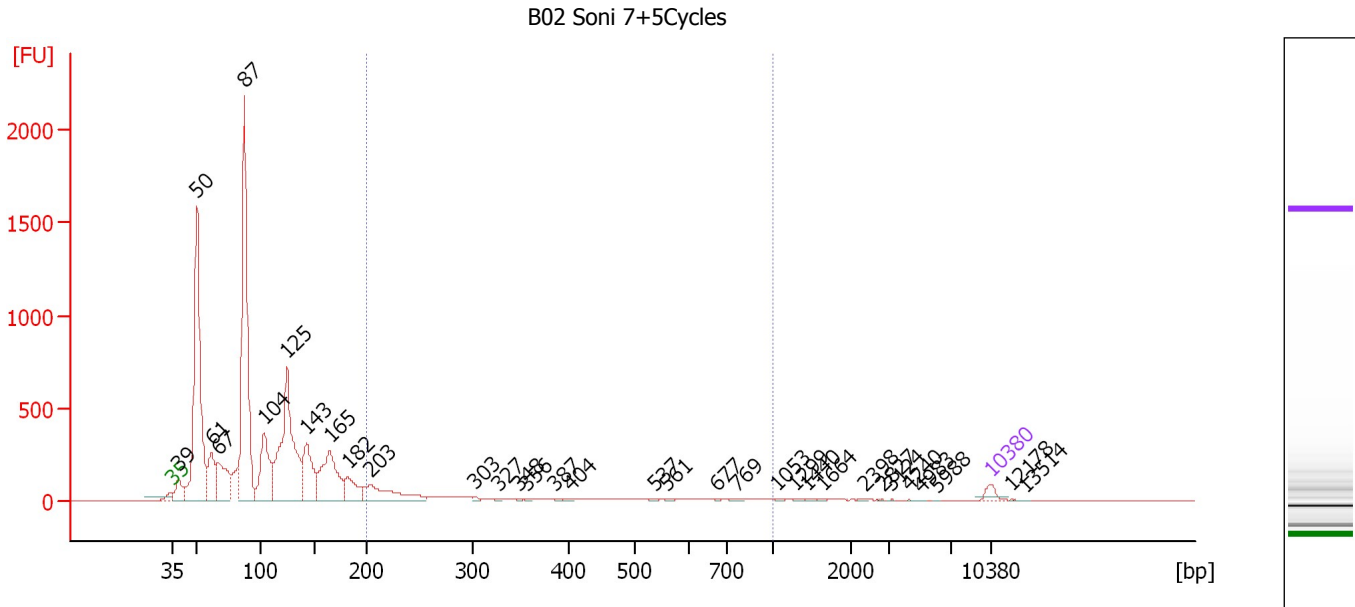
Region table for sample 4 : B08 Soni 7+5Cycles

From [bp]	To [bp]	Average Size [bp]	Molarity [pmol/l]	Conc. [pg/μl]	Corr. Area	% of Total	Size distribution in CV [%]	Color
189	1,055	457	256,810.8	61,168.01	6,893.7	55	40.8	

Assay Class: High Sensitivity DNA Assay
 Data Path: C:\...ents and Settings\Bioanalyzer\2012-07-11\2012-07-11_006.xad

Created: 7/11/2012 2:56:20 PM
 Modified: 7/11/2012 3:40:07 PM

Electropherogram Summary Continued ...



Overall Results for sample 5 : B02 Soni 7+5Cycles

Number of peaks found: 33 Corr. Area 1: 1,001.6
 Noise: 0.5

Peak table for sample 5 : B02 Soni 7+5Cycles

Peak	Size [bp]	Conc. [pg/μl]	Molarity [pmol/l]	Observations
1	35	125.00	5,411.3	Lower Marker
2	39	325.33	12,622.9	
3	50	3,944.22	119,881.4	
4	61	666.50	16,443.0	
5	67	841.36	19,161.4	
6	87	4,140.06	71,731.6	
7	104	1,119.99	16,350.5	
8	125	2,791.81	33,726.5	
9	143	905.18	9,572.7	
10	165	1,218.08	11,191.9	
11	182	418.87	3,493.4	
12	203	673.67	5,032.3	
13	303	21.81	108.9	
14	327	19.15	88.7	
15	348	17.28	75.3	
16	356	18.40	78.2	
17	387	15.95	62.5	
18	404	18.98	71.3	
19	537	14.00	39.5	
20	561	14.92	40.3	
21	677	11.17	25.0	
22	769	20.20	39.8	
23	1,053	9.94	14.3	
24	1,299	8.79	10.3	
25	1,440	6.64	7.0	
26	1,664	5.20	4.7	

Assay Class: High Sensitivity DNA Assay
 Data Path: C:\...ents and Settings\Bioanalyzer\2012-07-11\2012-07-11_006.xad


Created: 7/11/2012 2:56:20 PM
 Modified: 7/11/2012 3:40:07 PM

Electropherogram Summary Continued ...

... Peak table for sample 5 : B02 Soni 7+5Cycles

Peak	Size [bp]	Conc. [pg/μl]	Molarity [pmol/l]	Observations
27	2,398	5.30	3.4	
28	2,827	4.22	2.3	
29	3,124	4.08	2.0	
30	4,240	4.36	1.6	
31	4,983	3.36	1.0	
32	5,988	2.74	0.7	
33	10,380	75.00	10.9	Upper Marker
34	12,178	0.00	0.0	
35	13,514	0.00	0.0	

Region table for sample 5 : B02 Soni 7+5Cycles

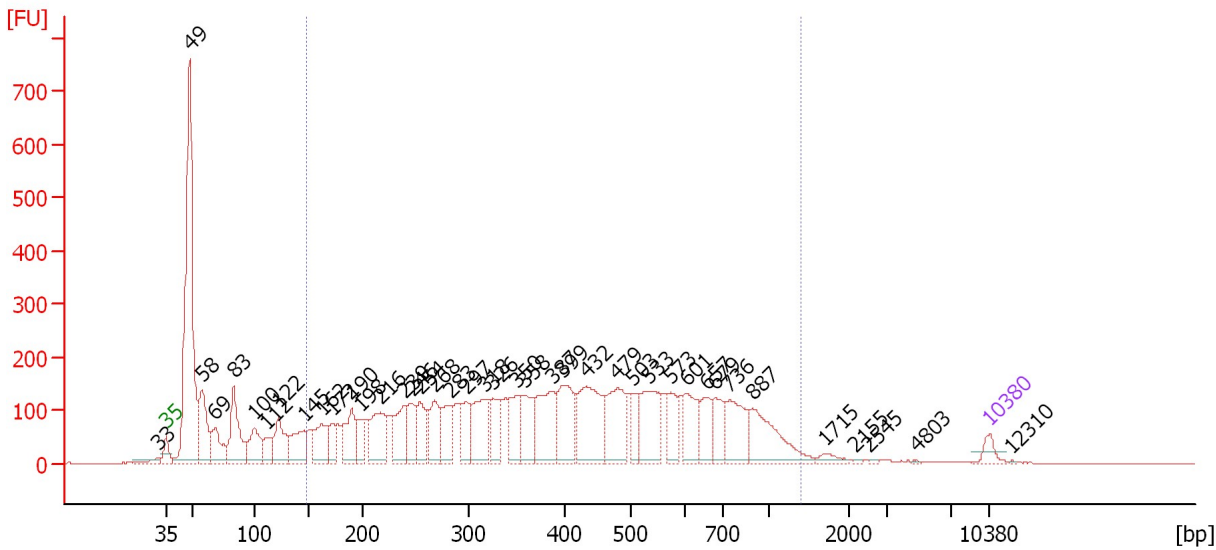
From [bp]	To [bp]	Average Size [bp]	Molarity [pmol/l]	Conc. [pg/μl]	Corr. Area	% of Total	Size distribution in CV [%]	Color
200	1,000	383	6,737.5	1,308.40	1,001.6	9	49.3	

Assay Class: High Sensitivity DNA Assay
 Data Path: C:\...ents and Settings\Bioanalyzer\2012-07-11\2012-07-11_006.xad

Created: 7/11/2012 2:56:20 PM
 Modified: 7/11/2012 3:40:07 PM

Electropherogram Summary Continued ...

B23 Soni 9+4+3+3Cycles



Overall Results for sample 6 : B23 Soni 9+4+3+3Cycles

Number of peaks found: 41 Corr. Area 1: 6,137.2
 Noise: 0.4

Peak table for sample 6 : B23 Soni 9+4+3+3Cycles

Peak	Size [bp]	Conc. [pg/µl]	Molarity [pmol/l]	Observations
1	33	0.00	0.0	
2	35	125.00	5,411.3	Lower Marker
3	49	3,312.61	103,052.3	
4	58	636.65	16,595.6	
5	69	407.87	9,020.6	
6	83	673.11	12,267.2	
7	100	422.54	6,424.3	
8	112	177.21	2,404.3	
9	122	442.72	5,518.2	
10	145	391.74	4,088.6	
11	162	427.25	3,991.3	
12	172	211.48	1,868.1	
13	190	458.58	3,663.9	
14	198	220.99	1,692.1	
15	216	537.78	3,765.5	
16	239	421.59	2,673.8	
17	246	341.77	2,103.2	
18	254	348.63	2,079.0	
19	268	397.29	2,244.8	
20	283	359.19	1,920.8	
21	297	365.16	1,860.4	
22	318	540.55	2,579.4	
23	326	343.12	1,593.9	
24	350	337.01	1,457.9	
25	358	420.95	1,783.3	
26	387	626.59	2,451.4	

Assay Class: High Sensitivity DNA Assay
 Data Path: C:\...ents and Settings\Bioanalyzer\2012-07-11\2012-07-11_006.xad

Created: 7/11/2012 2:56:20 PM
 Modified: 7/11/2012 3:40:07 PM

Electropherogram Summary Continued ...

... Peak table for sample 6 : B23 Soni 9+4+3+3Cycles

Peak	Size [bp]	Conc. [pg/µl]	Molarity [pmol/l]	Observations
27	399	574.45	2,181.4	
28	432	776.23	2,721.1	
29	479	579.95	1,834.0	
30	503	215.86	650.6	
31	533	551.86	1,567.5	
32	573	262.13	693.2	
33	601	343.61	866.9	
34	657	262.37	605.2	
35	679	257.48	574.7	
36	736	444.18	913.9	
37	887	534.21	913.0	
38	1,715	54.76	48.4	
39	2,155	8.81	6.2	
40	2,545	8.69	5.2	
41	4,803	5.05	1.6	
42	10,380	75.00	10.9	Upper Marker
43	12,310	0.00	0.0	

Region table for sample 6 : B23 Soni 9+4+3+3Cycles

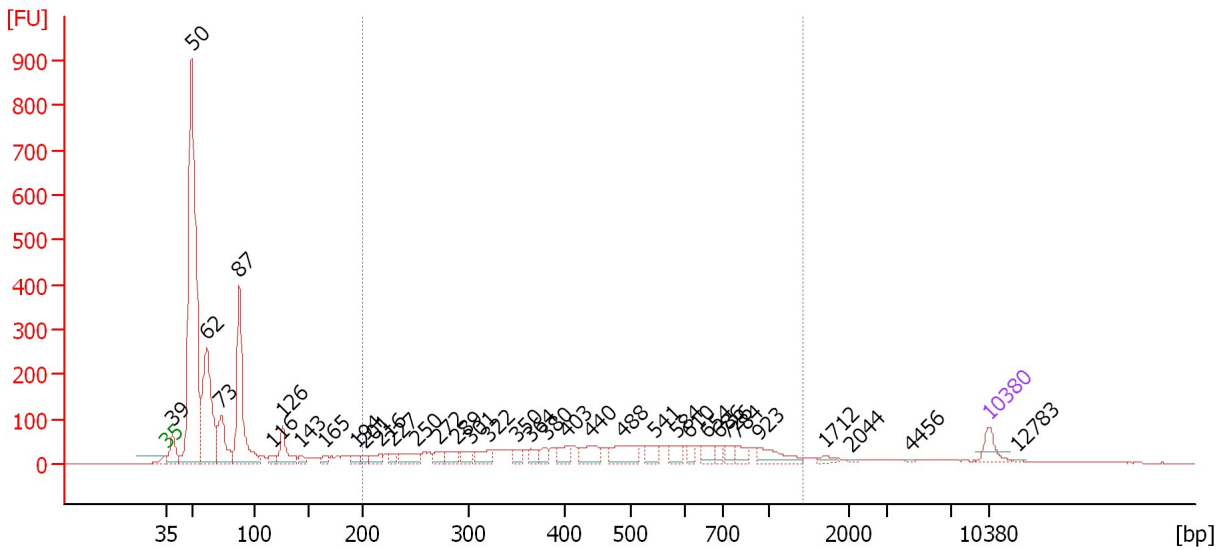
From [bp]	To [bp]	Average Size [bp]	Molarity [pmol/l]	Conc. [pg/µl]	Corr. Area	% of Total	Size distribution in CV [%]	Color
148	1,398	449	59,321.6	12,688.29	6,137.2	71	48.9	

Assay Class: High Sensitivity DNA Assay
 Data Path: C:\...ents and Settings\Bioanalyzer\2012-07-11\2012-07-11_006.xad

Created: 7/11/2012 2:56:20 PM
 Modified: 7/11/2012 3:40:07 PM

Electropherogram Summary Continued ...

B27 Soni 9+4+3Cycles



Overall Results for sample 7 : B27 Soni 9+4+3Cycles

Number of peaks found: 36 Corr. Area 1: 1,576.5
 Noise: 0.3

Peak table for sample 7 : B27 Soni 9+4+3Cycles

Peak	Size [bp]	Conc. [pg/μl]	Molarity [pmol/l]	Observations
1	35	125.00	5,411.3	Lower Marker
2	39	187.76	7,337.1	
3	50	2,898.73	88,275.5	
4	62	991.44	24,249.1	
5	73	374.31	7,738.1	
6	87	929.74	16,105.2	
7	116	52.86	689.2	
8	126	212.53	2,564.7	
9	143	44.16	469.2	
10	165	42.34	389.8	
11	194	43.55	340.5	
12	201	37.86	285.6	
13	216	61.60	431.9	
14	227	39.26	261.6	
15	250	107.95	654.4	
16	272	55.12	307.1	
17	289	65.67	344.5	
18	301	63.41	318.9	
19	322	97.01	456.9	
20	350	54.12	234.6	
21	364	52.58	219.0	
22	380	52.06	207.3	
23	403	78.12	293.7	
24	440	115.88	398.8	
25	488	158.17	491.0	
26	541	63.66	178.2	

Assay Class: High Sensitivity DNA Assay
 Data Path: C:\...ents and Settings\Bioanalyzer\2012-07-11\2012-07-11_006.xad


Created: 7/11/2012 2:56:20 PM
 Modified: 7/11/2012 3:40:07 PM

Electropherogram Summary Continued ...

... Peak table for sample 7 : B27 Soni 9+4+3Cycles

Peak	Size [bp]	Conc. [pg/μl]	Molarity [pmol/l]	Observations
27	584	69.32	179.8	
28	610	39.59	98.3	
29	654	65.45	151.6	
30	686	36.78	81.3	
31	726	43.89	91.6	
32	784	62.34	120.5	
33	923	108.28	177.8	
34	1,712	25.29	22.4	
35	2,044	7.11	5.3	
36	4,456	4.77	1.6	
37	10,380	75.00	10.9	Upper Marker
38	12,783	0.00	0.0	

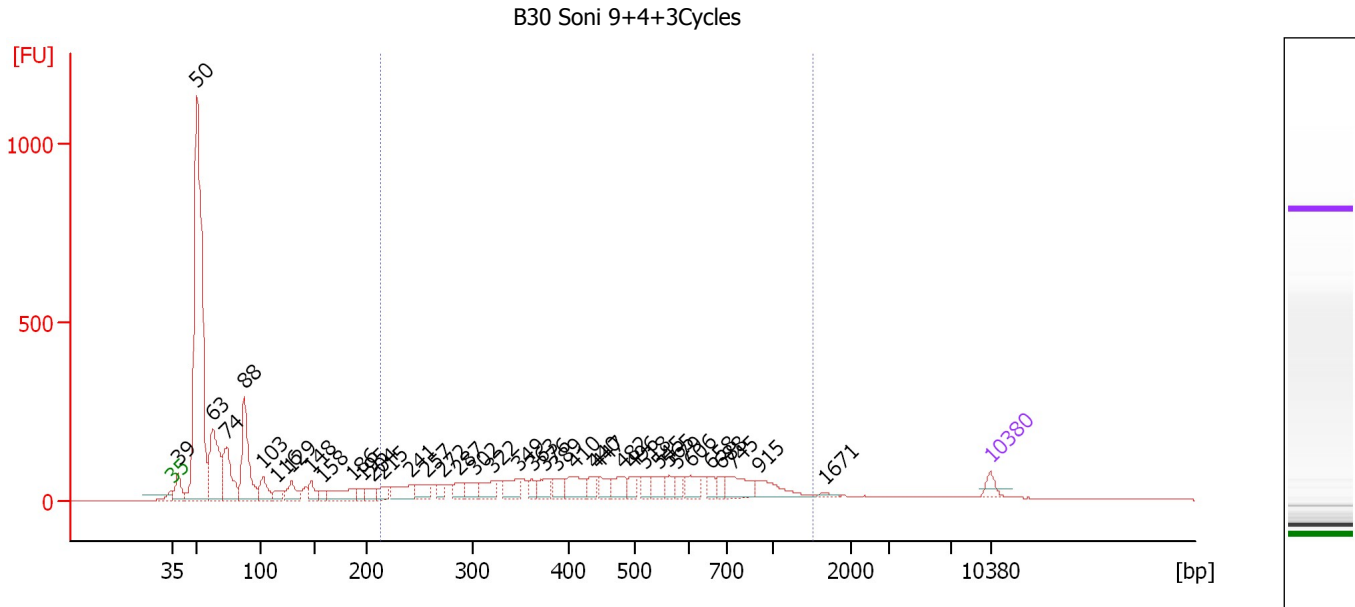
Region table for sample 7 : B27 Soni 9+4+3Cycles

From [bp]	To [bp]	Average Size [bp]	Molarity [pmol/l]	Conc. [pg/μl]	Corr. Area	% of Total	Size distribution in CV [%]	Color
199	1,426	514	8,536.2	2,204.11	1,576.5	33	46.7	

Assay Class: High Sensitivity DNA Assay
 Data Path: C:\...ents and Settings\Bioanalyzer\2012-07-11\2012-07-11_006.xad

Created: 7/11/2012 2:56:20 PM
 Modified: 7/11/2012 3:40:07 PM

Electropherogram Summary Continued ...



Overall Results for sample 8 : B30 Soni 9+4+3Cycles

Number of peaks found: 39 Corr. Area 1: 2,620.9
 Noise: 0.3

Peak table for sample 8 : B30 Soni 9+4+3Cycles

Peak	Size [bp]	Conc. [pg/µl]	Molarity [pmol/l]	Observations
1	35	125.00	5,411.3	Lower Marker
2	39	281.24	10,984.5	
3	50	5,003.70	152,149.2	
4	63	1,060.45	25,671.5	
5	74	718.58	14,810.3	
6	88	1,008.71	17,414.4	
7	103	269.85	3,973.5	
8	116	116.79	1,523.4	
9	129	233.24	2,730.5	
10	148	152.48	1,564.6	
11	158	72.84	700.2	
12	186	268.23	2,181.0	
13	195	75.83	588.6	
14	204	105.69	784.5	
15	215	123.80	872.9	
16	241	254.55	1,600.8	
17	257	170.14	1,003.9	
18	272	92.49	516.1	
19	287	135.50	714.4	
20	302	162.09	812.4	
21	322	192.98	907.6	
22	349	200.75	871.8	
23	363	94.14	393.4	
24	376	165.06	664.7	
25	389	139.47	542.8	
26	410	253.58	938.1	

Assay Class: High Sensitivity DNA Assay
 Data Path: C:\...ents and Settings\Bioanalyzer\2012-07-11\2012-07-11_006.xad

Created: 7/11/2012 2:56:20 PM
 Modified: 7/11/2012 3:40:07 PM

Electropherogram Summary Continued ...

... Peak table for sample 8 : B30 Soni 9+4+3Cycles

Peak	Size [bp]	Conc. [pg/µl]	Molarity [pmol/l]	Observations
27	440	127.89	440.5	
28	447	135.11	458.0	
29	482	170.44	536.0	
30	496	96.59	295.0	
31	518	93.80	274.2	
32	545	145.20	403.8	
33	565	101.70	272.9	
34	579	86.51	226.4	
35	606	150.23	375.4	
36	658	98.23	226.1	
37	688	75.17	165.5	
38	745	242.71	493.8	
39	915	206.61	342.0	
40	1,671	24.21	22.0	
41	10,380	75.00	10.9	Upper Marker

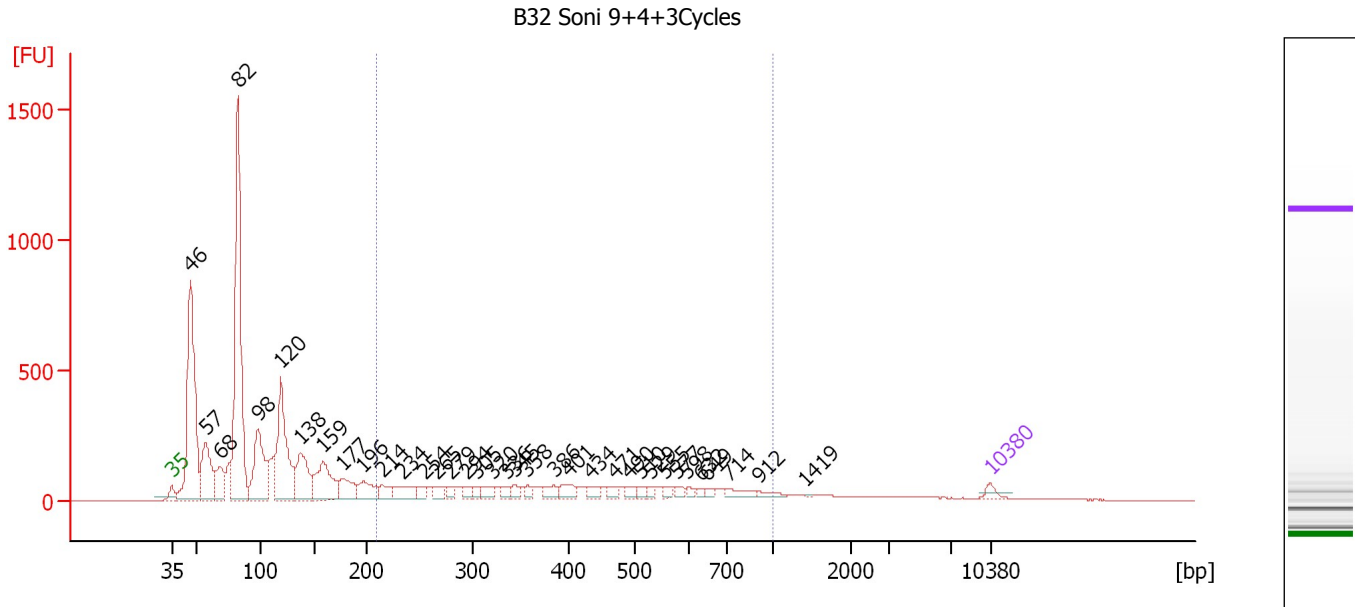
Region table for sample 8 : B30 Soni 9+4+3Cycles

From [bp]	To [bp]	Average Size [bp]	Molarity [pmol/l]	Conc. [pg/µl]	Corr. Area	% of Total	Size distribution in CV [%]	Color
212	1,511	509	18,103.4	4,704.86	2,620.9	39	46.8	■

Assay Class: High Sensitivity DNA Assay
 Data Path: C:\...ents and Settings\Bioanalyzer\2012-07-11\2012-07-11_006.xad

Created: 7/11/2012 2:56:20 PM
 Modified: 7/11/2012 3:40:07 PM

Electropherogram Summary Continued ...



Overall Results for sample 9 : B32 Soni 9+4+3Cycles

Number of peaks found: 36 Corr. Area 1: 2,349.4
 Noise: 0.5

Peak table for sample 9 : B32 Soni 9+4+3Cycles

Peak	Size [bp]	Conc. [pg/μl]	Molarity [pmol/l]	Observations
1	35	125.00	5,411.3	Lower Marker
2	46	4,542.55	149,830.4	
3	57	1,447.50	38,782.3	
4	68	655.26	14,554.6	
5	82	5,479.05	100,863.5	
6	98	1,740.07	26,809.6	
7	120	2,435.11	30,861.3	
8	138	1,169.45	12,873.0	
9	159	1,184.79	11,281.1	
10	177	551.72	4,732.1	
11	196	480.49	3,716.7	
12	214	269.24	1,908.7	
13	234	401.24	2,598.0	
14	254	166.34	991.1	
15	265	209.33	1,195.6	
16	279	118.16	641.3	
17	294	155.19	799.1	
18	305	108.72	539.9	
19	320	190.69	901.8	
20	336	114.77	517.1	
21	345	131.21	577.0	
22	358	109.23	462.4	
23	386	181.16	711.4	
24	401	207.85	785.9	
25	434	158.23	551.9	
26	471	110.51	355.6	

Assay Class: High Sensitivity DNA Assay
 Data Path: C:\...ents and Settings\Bioanalyzer\2012-07-11\2012-07-11_006.xad

Created: 7/11/2012 2:56:20 PM
 Modified: 7/11/2012 3:40:07 PM

Electropherogram Summary Continued ...

... Peak table for sample 9 : B32 Soni 9+4+3Cycles

Peak	Size [bp]	Conc. [pg/μl]	Molarity [pmol/l]	Observations
27	490	102.97	318.4	
28	510	86.92	258.1	
29	529	77.00	220.3	
30	555	96.52	263.3	
31	577	84.82	222.7	
32	598	61.56	155.9	
33	632	62.92	150.9	
34	649	55.90	130.4	
35	714	162.20	344.2	
36	912	83.66	139.0	
37	1,419	8.28	8.8	
38	10,380	75.00	10.9	Upper Marker

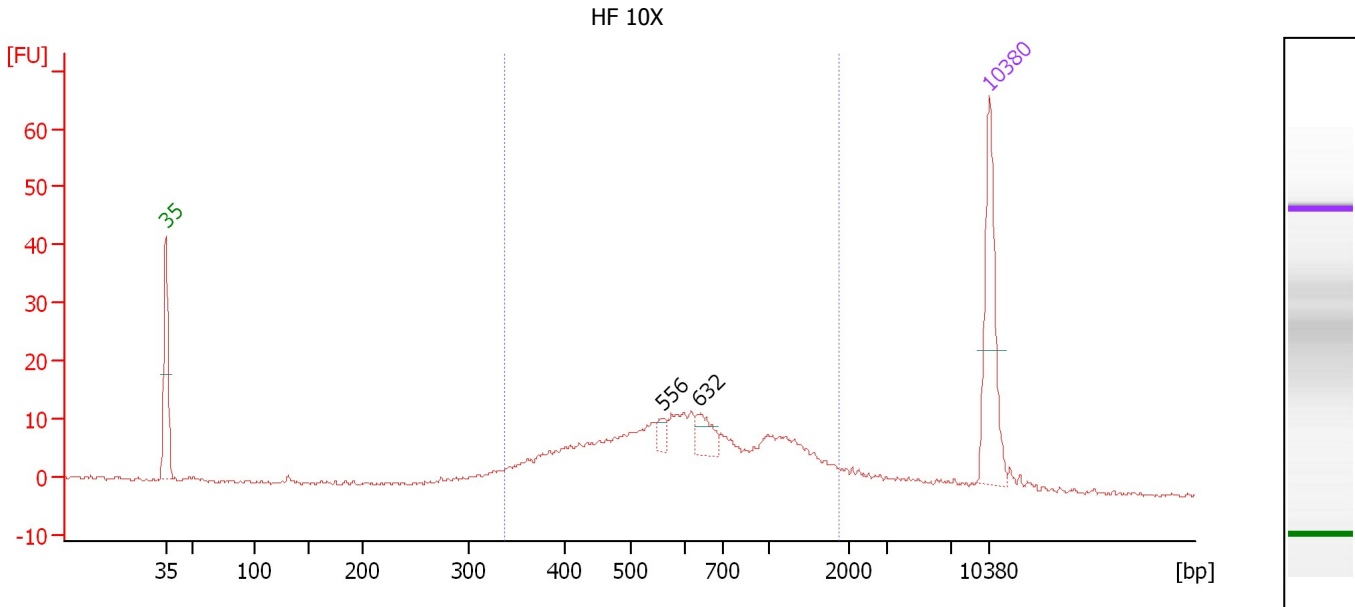
Region table for sample 9 : B32 Soni 9+4+3Cycles

From [bp]	To [bp]	Average Size [bp]	Molarity [pmol/l]	Conc. [pg/μl]	Corr. Area	% of Total	Size distribution in CV [%]	Color
208	1,000	437	23,507.9	5,487.89	2,349.4	25	40.4	

Assay Class: High Sensitivity DNA Assay
 Data Path: C:\...ents and Settings\Bioanalyzer\2012-07-11\2012-07-11_006.xad

Created: 7/11/2012 2:56:20 PM
 Modified: 7/11/2012 3:40:07 PM

Electropherogram Summary Continued ...



Overall Results for sample 10 : HF 10X

Number of peaks found: 2 Corr. Area 1: 258.8
 Noise: 0.4

Peak table for sample 10 : HF 10X

Peak	Size [bp]	Conc. [pg/μl]	Molarity [pmol/l]	Observations
1	35	125.00	5,411.3	Lower Marker
2	556	9.40	25.6	
3	632	22.15	53.1	
4	10,380	75.00	10.9	Upper Marker

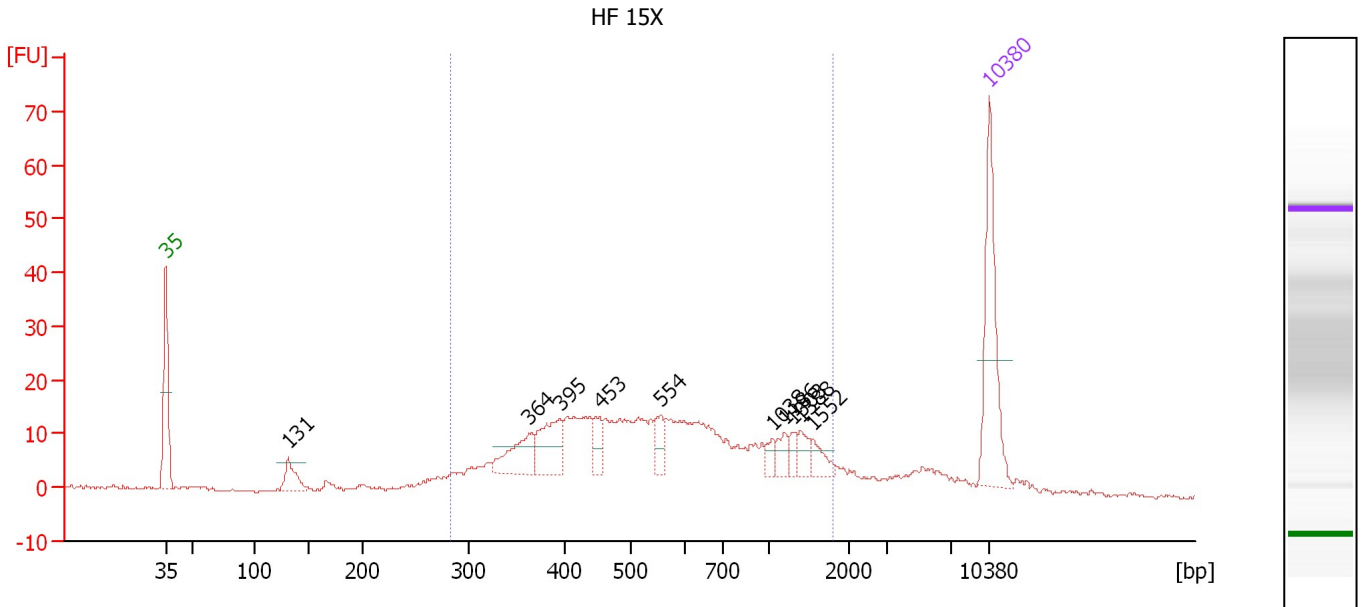
Region table for sample 10 : HF 10X

From [bp]	To [bp]	Average Size [bp]	Molarity [pmol/l]	Conc. [pg/μl]	Corr. Area	% of Total	Size distribution in CV [%]	Color
337	1,886	718	1,145.6	432.49	258.8	84	49.4	Blue

Assay Class: High Sensitivity DNA Assay
 Data Path: C:\...ents and Settings\Bioanalyzer\2012-07-11\2012-07-11_006.xad

Created: 7/11/2012 2:56:20 PM
 Modified: 7/11/2012 3:40:07 PM

Electropherogram Summary Continued ...



Overall Results for sample 11 : HF 15X

Number of peaks found: 10 Corr. Area 1: 406.6
 Noise: 0.3

Peak table for sample 11 : HF 15X

Peak	Size [bp]	Conc. [pg/μl]	Molarity [pmol/l]	Observations
1	35	125.00	5,411.3	Lower Marker
2	131	26.11	302.4	
3	364	39.95	166.5	
4	395	46.96	179.9	
5	453	18.02	60.3	
6	554	17.30	47.3	
7	1,038	7.71	11.3	
8	1,186	11.33	14.5	
9	1,303	7.52	8.8	
10	1,388	11.04	12.0	
11	1,552	11.97	11.7	
12	10,380	75.00	10.9	Upper Marker

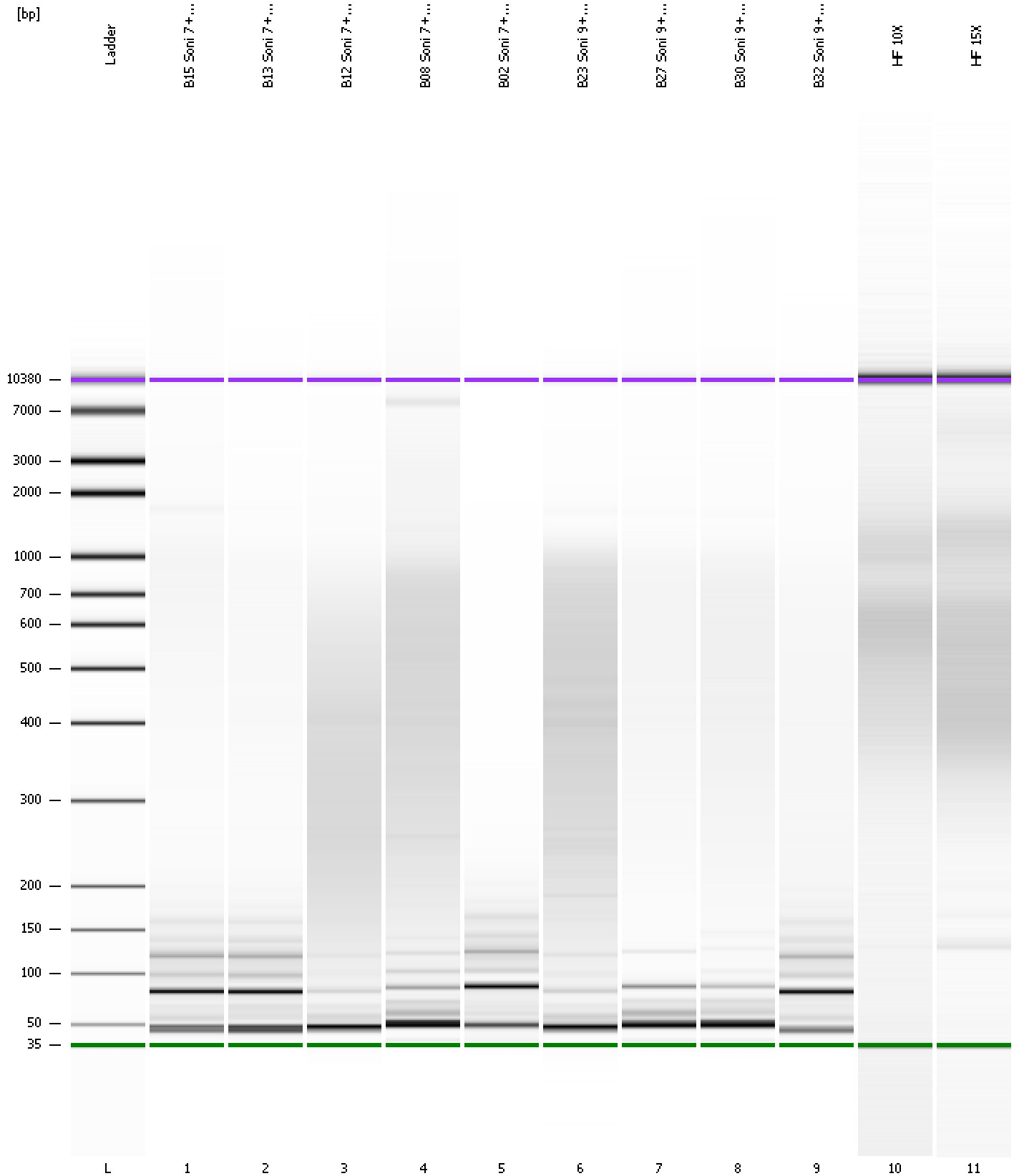
Region table for sample 11 : HF 15X

From [bp]	To [bp]	Average Size [bp]	Molarity [pmol/l]	Conc. [pg/μl]	Corr. Area	% of Total	Size distribution in CV [%]	Color
283	1,797	652	1,980.2	655.22	406.6	82	53.7	Blue

Assay Class: High Sensitivity DNA Assay
Data Path: C:\...ents and Settings\Bioanalyzer\2012-07-11\2012-07-11_006.xad

Created: 7/11/2012 2:56:20 PM
Modified: 7/11/2012 3:40:07 PM

Gel Image



Assay Class: High Sensitivity DNA Assay
 Data Path: C:\...ents and Settings\Bioanalyzer\2012-07-11\2012-07-11_006.xad

Created: 7/11/2012 2:56:20 PM
 Modified: 7/11/2012 3:40:07 PM

Run Logbook

Description	Number	Source	Category	Sub Category	Time	Time Zone	User	Host
Run ended on port 1 (Number of wells acquired: 12)		Instrument	Run		7/11/2012 3:37:40 PM	(GMT --07:00) Pacific Standard Time	UC Davis	D8XSMGH1
Run started on port 1 (File: C:\Documents and Settings\Bioanalyzer\2012-07-11\2012-07-11_006.xad)		Instrument	Run		7/11/2012 2:56:26 PM	(GMT --07:00) Pacific Standard Time	UC Davis	D8XSMGH1
Product Number : G2938B		Instrument	Run		7/11/2012 2:56:26 PM	(GMT --07:00) Pacific Standard Time	UC Davis	D8XSMGH1
Name :		Instrument	Run		7/11/2012 2:56:26 PM	(GMT --07:00) Pacific Standard Time	UC Davis	D8XSMGH1
Vendor : Agilent Technologies		Instrument	Run		7/11/2012 2:56:26 PM	(GMT --07:00) Pacific Standard Time	UC Davis	D8XSMGH1
Serial# : DE13701086		Instrument	Run		7/11/2012 2:56:26 PM	(GMT --07:00) Pacific Standard Time	UC Davis	D8XSMGH1
Firmware : C.01.069		Instrument	Run		7/11/2012 2:56:26 PM	(GMT --07:00) Pacific Standard Time	UC Davis	D8XSMGH1
Cartridge : Electrode		Instrument	Run		7/11/2012 2:56:26 PM	(GMT --07:00) Pacific Standard Time	UC Davis	D8XSMGH1