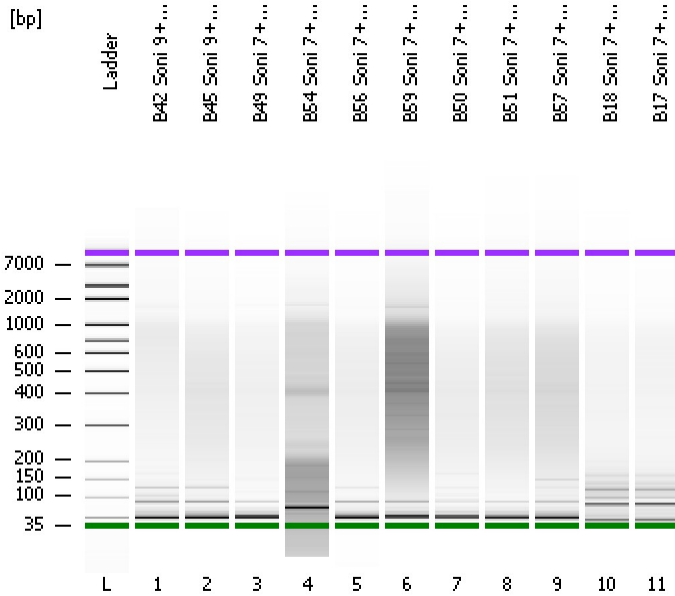


Assay Class: High Sensitivity DNA Assay
Data Path: C:\...ents and Settings\Bioanalyzer\2012-07-11\2012-07-11_008.xad

Created: 7/11/2012 4:41:33 PM
Modified: 7/11/2012 5:25:34 PM

Electrophoresis File Run Summary



Instrument Information:

Instrument Name: DE13701086 Firmware: C.01.069
Serial#: DE13701086 Type: G2938B

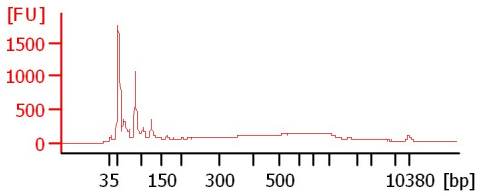
Assay Information:

Assay Origin Path: C:\Program Files\Agilent\2100 bioanalyzer\2100 expert\assays\dsDNA\High Sensitivity DNA.xsy
Assay Class: High Sensitivity DNA Assay
Version: 1.03
Assay Comments: Copyright © 2003-2010 Agilent Technologies

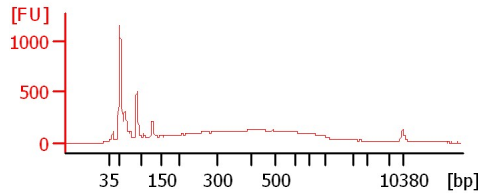
Chip Information:

Chip Lot #:
Reagent Kit Lot #:
Chip Comments:

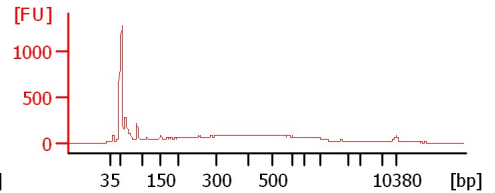
B42 Soni 9+4+4Cycles



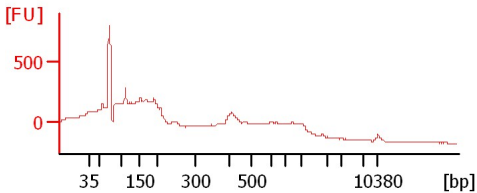
B45 Soni 9+4+4Cycles



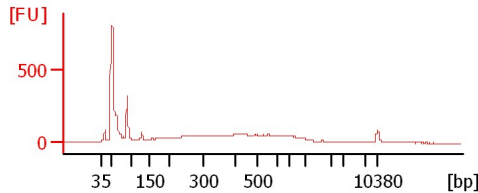
B49 Soni 7+4+5Cycles



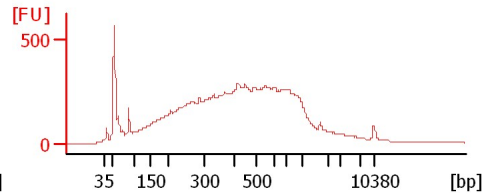
B54 Soni 7+5+5Cycles



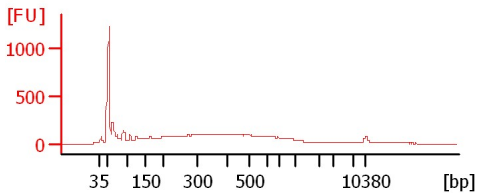
B56 Soni 7+5+4Cycles



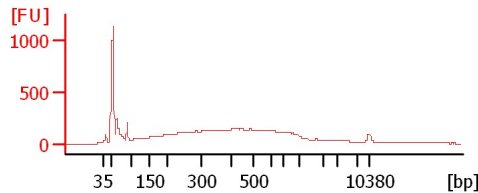
B59 Soni 7+5+5Cycles



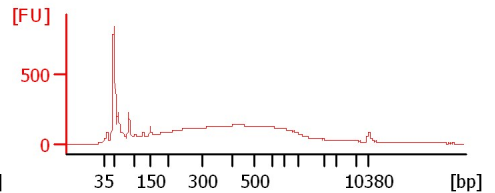
B50 Soni 7+4+3Cycles



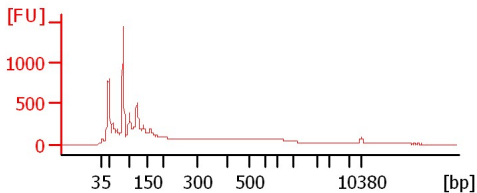
B51 Soni 7+5+3Cycles



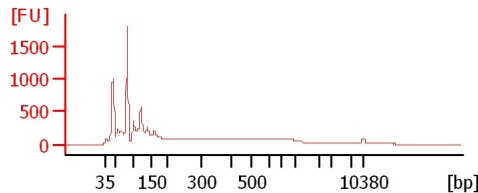
B57 Soni 7+5+3Cycles



B18 Soni 7+5+3Cycles



B17 Soni 7+5+3Cycles



Assay Class: High Sensitivity DNA Assay
 Data Path: C:\...ents and Settings\Bioanalyzer\2012-07-11\2012-07-11_008.xad

Created: 7/11/2012 4:41:33 PM
 Modified: 7/11/2012 5:25:34 PM

Electrophoresis File Run Summary (Chip Summary)

Sample Name	Sample Comment	Rest. Digest	Status	Observation	Result Label	Result Color
B42 Soni 9+4+4Cycles		<input type="checkbox"/>	✓			
B45 Soni 9+4+4Cycles		<input type="checkbox"/>	✓			
B49 Soni 7+4+5Cycles		<input type="checkbox"/>	✓			
B54 Soni 7+5+5Cycles		<input type="checkbox"/>	✓			
B56 Soni 7+5+4Cycles		<input type="checkbox"/>	✓			
B59 Soni 7+5+5Cycles		<input type="checkbox"/>	✓			
B50 Soni 7+4+3Cycles		<input type="checkbox"/>	✓			
B51 Soni 7+5+3Cycles		<input type="checkbox"/>	✓			
B57 Soni 7+5+3Cycles		<input type="checkbox"/>	✓			
B18 Soni 7+5+3Cycles		<input type="checkbox"/>	✓			
B17 Soni 7+5+3Cycles		<input type="checkbox"/>	✓			
Ladder		<input type="checkbox"/>	✓			

Chip Lot #

Reagent Kit Lot #

Chip Comments :

Assay Class: High Sensitivity DNA Assay
Data Path: C:\...ents and Settings\Bioanalyzer\2012-07-11\2012-07-11_008.xad

Created: 7/11/2012 4:41:33 PM
Modified: 7/11/2012 5:25:34 PM

Electrophoresis Assay Details

General Analysis Settings

Number of Available Sample and Ladder Wells (Max.) : 12
Minimum Visible Range [s] : 32
Maximum Visible Range [s] : 138
Start Analysis Time Range [s] : 33
End Analysis Time Range [s] : 137.5
Ladder Concentration [pg/ μ l] : 1950
Uses Standard Area for Ladder Fragments
Lower Marker Concentration [pg/ μ l] : 125
Upper Marker Concentration [pg/ μ l] : 75
Used Upper Marker for Quantitation
Standard Curve Fit is Point to Point
Show Data Aligned to Lower and Upper Marker

Integrator Settings

Integration Start Time [s] : 33.05
Integration End Time [s] : 137
Slope Threshold : 0.8
Height Threshold [FU] : 5
Area Threshold : 0.1
Width Threshold [s] : 0.6
Baseline Plateau [s] : 0.5

Filter Settings

Filter Width [s] : 0.5
Polynomial Order : 4

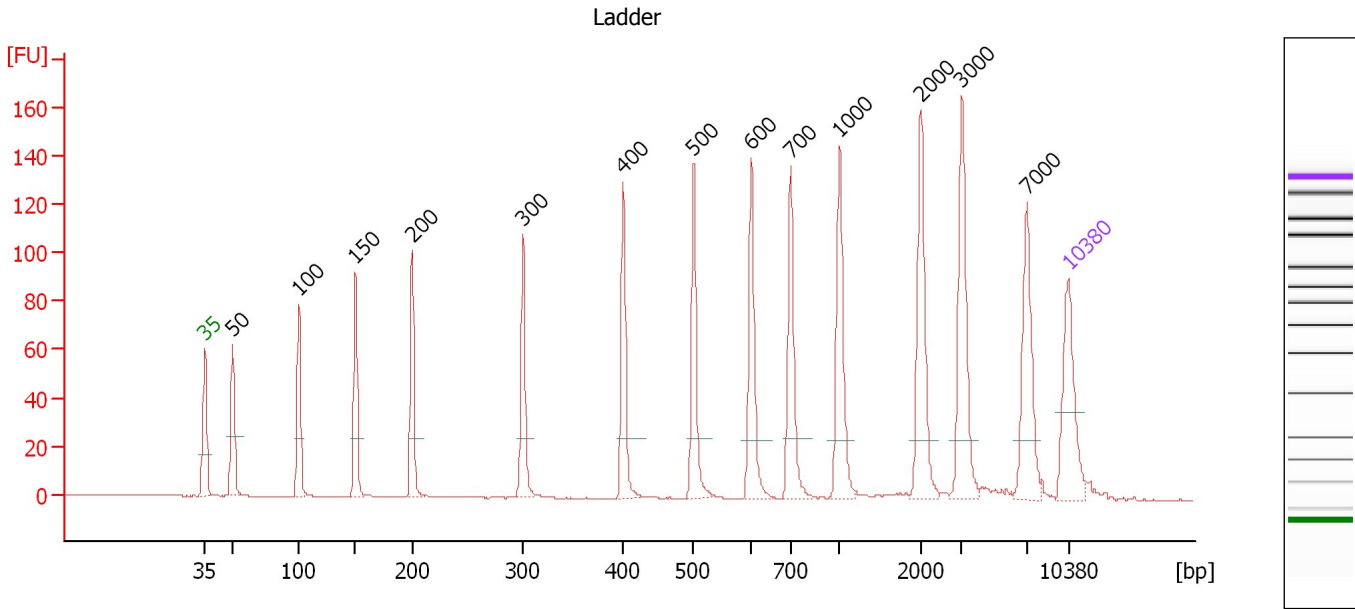
Ladder

Ladder Peak	Size	Area
1	35	160
2	50	210
3	100	208
4	150	221
5	200	242
6	300	270
7	400	305
8	500	306
9	600	336
10	700	321
11	1000	366
12	2000	413
13	3000	411
14	7000	400
15	10380	214

Assay Class: High Sensitivity DNA Assay
 Data Path: C:\...ents and Settings\Bioanalyzer\2012-07-11\2012-07-11_008.xad

Created: 7/11/2012 4:41:33 PM
 Modified: 7/11/2012 5:25:34 PM

Electropherogram Summary



Overall Results for Ladder

Noise: 0.1

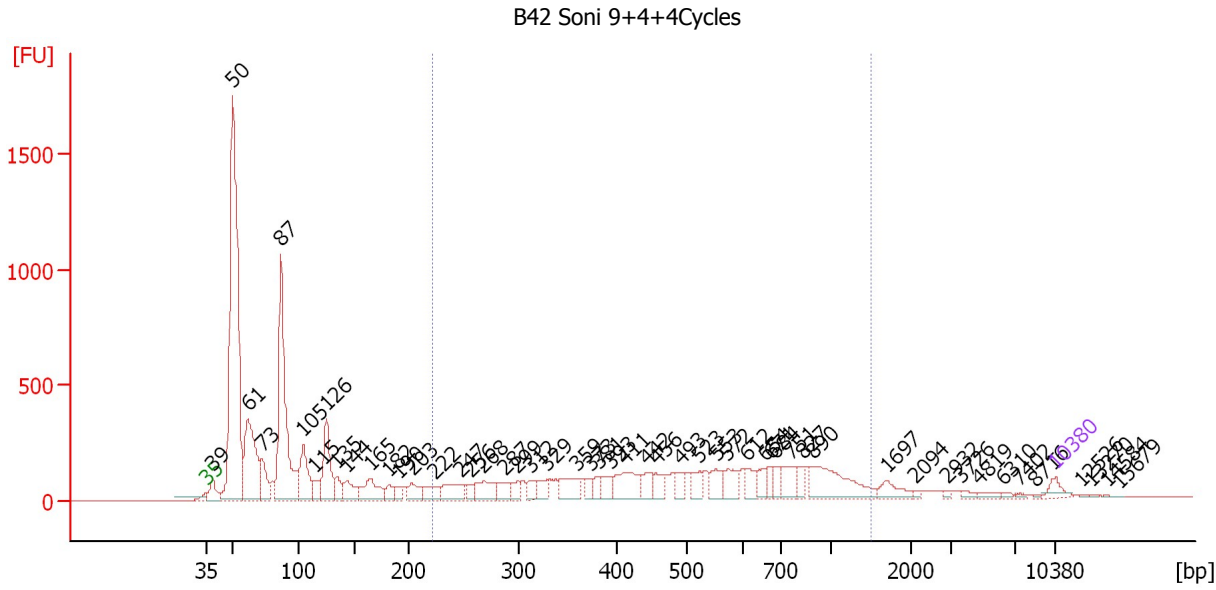
Peak table for Ladder

Peak	Size [bp]	Conc. [pg/μl]	Molarity [pmol/l]	Observations
1	35	125.00	5,411.3	Lower Marker
2	50	150.00	4,545.5	Ladder Peak
3	100	150.00	2,272.7	Ladder Peak
4	150	150.00	1,515.2	Ladder Peak
5	200	150.00	1,136.4	Ladder Peak
6	300	150.00	757.6	Ladder Peak
7	400	150.00	568.2	Ladder Peak
8	500	150.00	454.5	Ladder Peak
9	600	150.00	378.8	Ladder Peak
10	700	150.00	324.7	Ladder Peak
11	1,000	150.00	227.3	Ladder Peak
12	2,000	150.00	113.6	Ladder Peak
13	3,000	150.00	75.8	Ladder Peak
14	7,000	150.00	32.5	Ladder Peak
15	10,380	75.00	10.9	Upper Marker

Assay Class: High Sensitivity DNA Assay
 Data Path: C:\...ents and Settings\Bioanalyzer\2012-07-11\2012-07-11_008.xad

Created: 7/11/2012 4:41:33 PM
 Modified: 7/11/2012 5:25:34 PM

Electropherogram Summary Continued ...



Overall Results for sample 1 : B42 Soni 9+4+4Cycles

Number of peaks found: 52 Corr. Area 1: 4,762.6
 Noise: 0.2

Peak table for sample 1 : B42 Soni 9+4+4Cycles

Peak	Size [bp]	Conc. [pg/µl]	Molarity [pmol/l]	Observations
1	35	125.00	5,411.3	Lower Marker
2	39	258.82	10,109.5	
3	50	4,834.06	146,875.4	
4	61	1,315.46	32,554.1	
5	73	364.86	7,610.8	
6	87	2,291.71	39,958.1	
7	105	599.99	8,683.1	
8	115	162.89	2,151.6	
9	126	683.55	8,241.3	
10	135	173.06	1,946.2	
11	144	273.52	2,882.2	
12	165	367.95	3,373.9	
13	182	116.65	971.5	
14	190	90.27	719.8	
15	203	183.07	1,366.8	
16	222	192.67	1,312.7	
17	247	274.25	1,681.2	
18	256	79.95	473.4	
19	268	280.35	1,584.6	
20	287	146.28	770.9	
21	299	123.68	626.4	
22	312	122.30	594.0	
23	329	141.26	651.3	
24	359	245.23	1,035.8	
25	373	98.37	399.9	
26	381	86.55	343.9	

Assay Class: High Sensitivity DNA Assay
 Data Path: C:\...ents and Settings\Bioanalyzer\2012-07-11\2012-07-11_008.xad

Created: 7/11/2012 4:41:33 PM
 Modified: 7/11/2012 5:25:34 PM

Electropherogram Summary Continued ...

... Peak table for sample 1 : B42 Soni 9+4+4Cycles

Peak	Size [bp]	Conc. [pg/µl]	Molarity [pmol/l]	Observations
27	393	151.62	584.4	
28	411	360.27	1,328.5	
29	442	148.32	509.0	
30	456	130.83	434.6	
31	493	126.08	387.6	
32	523	149.74	433.8	
33	553	171.55	470.0	
34	572	187.75	497.6	
35	612	145.32	359.8	
36	654	114.98	266.3	
37	671	95.44	215.6	
38	684	89.14	197.4	
39	751	194.93	393.2	
40	827	115.99	212.5	
41	890	526.02	895.9	
42	1,697	118.15	105.5	
43	2,094	17.00	12.3	
44	2,932	14.29	7.4	
45	3,726	26.49	10.8	
46	4,819	34.56	10.9	
47	6,310	15.67	3.8	
48	7,402	13.66	2.8	
49	8,716	7.09	1.2	
50	10,380	75.00	10.9	Upper Marker
51	12,526	0.00	0.0	
52	13,270	0.00	0.0	
53	14,584	0.00	0.0	
54	15,679	0.00	0.0	

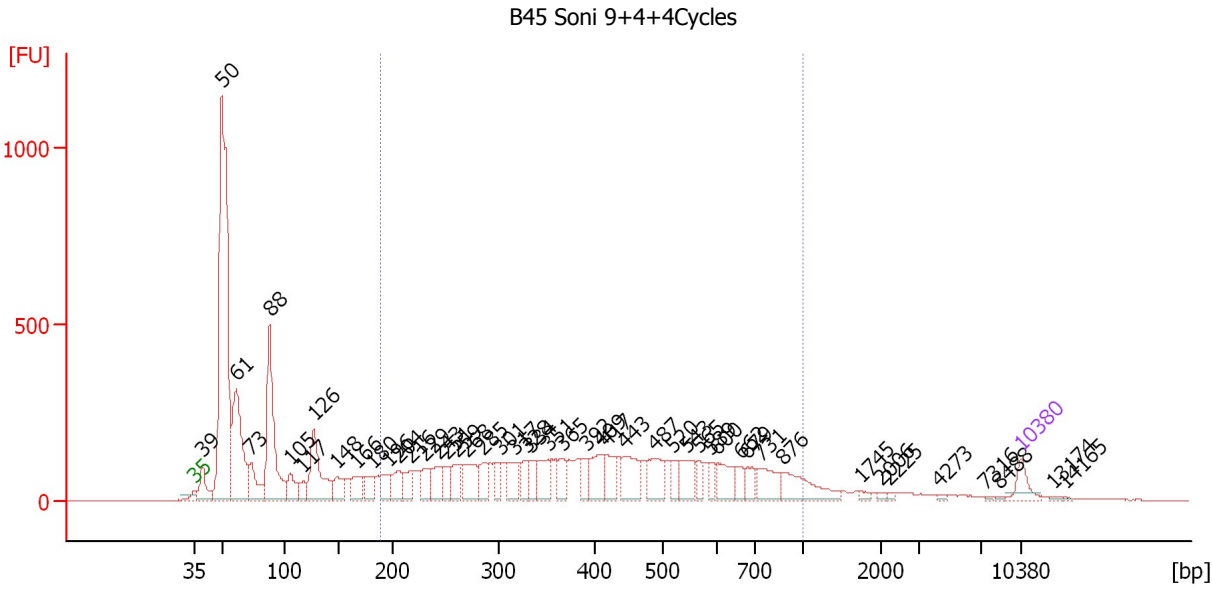
Region table for sample 1 : B42 Soni 9+4+4Cycles

From [bp]	To [bp]	Average Size [bp]	Molarity [pmol/l]	Conc. [pg/µl]	Corr. Area	% of Total	Size distribution in CV [%]	Color
222	1,497	558	17,925.4	4,993.95	4,762.6	36	47.2	■

Assay Class: High Sensitivity DNA Assay
 Data Path: C:\...ents and Settings\Bioanalyzer\2012-07-11\2012-07-11_008.xad

Created: 7/11/2012 4:41:33 PM
 Modified: 7/11/2012 5:25:34 PM

Electropherogram Summary Continued ...



Overall Results for sample 2 : B45 Soni 9+4+4Cycles

Number of peaks found: 48 Corr. Area 1: 5,150.5
 Noise: 0.9

Peak table for sample 2 : B45 Soni 9+4+4Cycles

Peak	Size [bp]	Conc. [pg/μl]	Molarity [pmol/l]	Observations
1	35	125.00	5,411.3	Lower Marker
2	39	210.25	8,126.5	
3	50	2,786.15	84,433.0	
4	61	885.17	21,872.6	
5	73	251.58	5,217.7	
6	88	921.78	15,919.4	
7	105	154.18	2,229.6	
8	117	101.44	1,313.2	
9	126	510.41	6,120.3	
10	148	149.36	1,524.7	
11	166	162.79	1,485.1	
12	180	113.11	950.5	
13	196	123.06	953.6	
14	204	152.14	1,127.6	
15	216	122.76	861.4	
16	229	128.27	847.1	
17	243	181.29	1,130.8	
18	251	103.54	625.2	
19	259	141.44	827.7	
20	268	221.66	1,251.2	
21	285	139.59	742.3	
22	301	99.49	500.8	
23	317	153.57	733.9	
24	328	126.65	584.9	
25	334	90.91	412.8	
26	351	195.32	843.6	

Assay Class: High Sensitivity DNA Assay
 Data Path: C:\...ents and Settings\Bioanalyzer\2012-07-11\2012-07-11_008.xad


Created: 7/11/2012 4:41:33 PM
 Modified: 7/11/2012 5:25:34 PM

Electropherogram Summary Continued ...

... Peak table for sample 2 : B45 Soni 9+4+4Cycles

Peak	Size [bp]	Conc. [pg/µl]	Molarity [pmol/l]	Observations
27	365	120.62	500.5	
28	392	97.35	376.6	
29	409	199.72	739.0	
30	417	139.75	508.3	
31	443	239.82	819.6	
32	487	195.78	608.5	
33	520	69.45	202.3	
34	543	171.22	477.4	
35	565	63.80	171.2	
36	589	63.42	163.2	
37	600	143.36	361.8	
38	662	76.16	174.3	
39	679	78.10	174.3	
40	731	158.35	328.4	
41	876	219.87	380.1	
42	1,745	18.32	15.9	
43	2,006	12.30	9.3	
44	2,225	9.10	6.2	
45	4,273	7.83	2.8	
46	7,316	5.83	1.2	
47	8,488	5.29	0.9	
48	10,380	75.00	10.9	Upper Marker
49	13,174	0.00	0.0	
50	14,165	0.00	0.0	

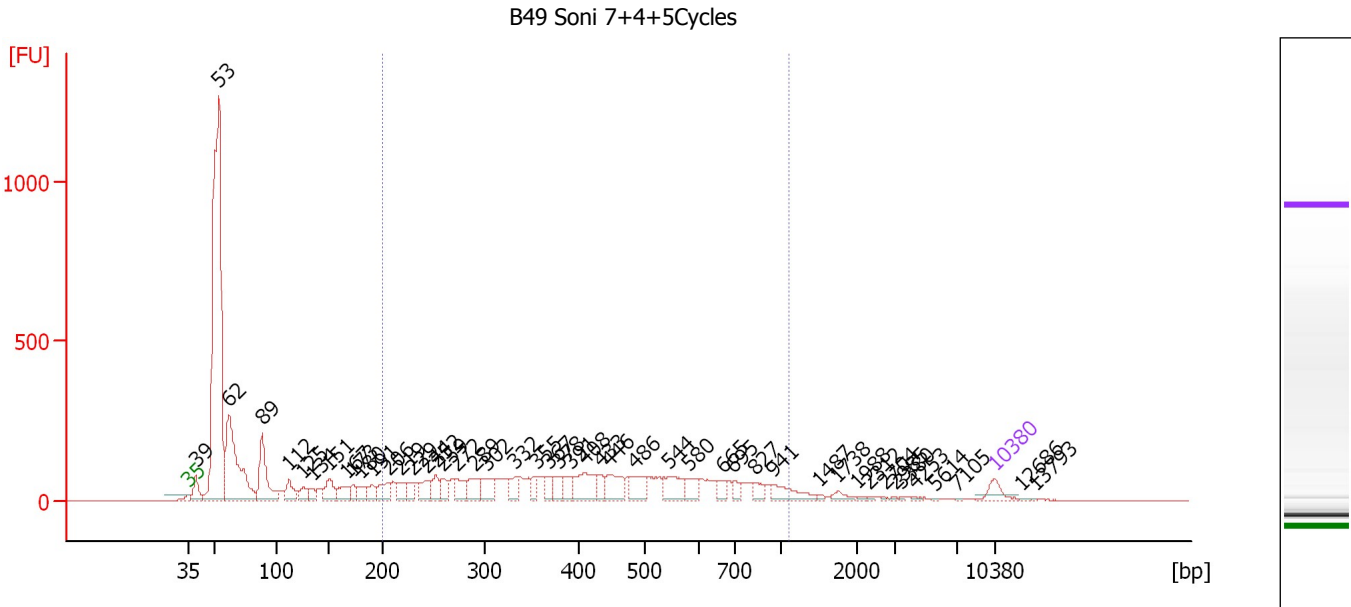
Region table for sample 2 : B45 Soni 9+4+4Cycles

From [bp]	To [bp]	Average Size [bp]	Molarity [pmol/l]	Conc. [pg/µl]	Corr. Area	% of Total	Size distribution in CV [%]	Color
188	1,000	437	20,618.2	4,729.27	5,150.5	48	40.8	

Assay Class: High Sensitivity DNA Assay
 Data Path: C:\...ents and Settings\Bioanalyzer\2012-07-11\2012-07-11_008.xad

Created: 7/11/2012 4:41:33 PM
 Modified: 7/11/2012 5:25:34 PM

Electropherogram Summary Continued ...



Overall Results for sample 3 : B49 Soni 7+4+5Cycles

Number of peaks found: 48 Corr. Area 1: 3,279.6
 Noise: 0.5

Peak table for sample 3 : B49 Soni 7+4+5Cycles

Peak	Size [bp]	Conc. [pg/μl]	Molarity [pmol/l]	Observations
1	35	125.00	5,411.3	Lower Marker
2	39	183.04	7,057.0	
3	53	4,174.93	118,243.0	
4	62	1,304.44	31,836.1	
5	89	561.52	9,592.6	
6	112	164.72	2,220.9	
7	125	129.06	1,559.0	
8	134	72.67	821.8	
9	151	181.21	1,823.9	
10	167	149.34	1,354.1	
11	173	82.10	718.5	
12	180	106.83	900.9	
13	191	98.78	782.8	
14	206	167.43	1,229.2	
15	219	130.12	901.6	
16	229	83.57	553.1	
17	244	158.84	987.4	
18	252	119.35	716.3	
19	259	103.41	605.9	
20	272	131.33	730.5	
21	289	181.29	949.5	
22	302	173.29	868.5	
23	332	119.30	543.9	
24	355	77.67	331.5	
25	367	83.66	345.0	
26	378	92.82	371.9	

Assay Class: High Sensitivity DNA Assay
 Data Path: C:\...ents and Settings\Bioanalyzer\2012-07-11\2012-07-11_008.xad

Created: 7/11/2012 4:41:33 PM
 Modified: 7/11/2012 5:25:34 PM

Electropherogram Summary Continued ...

... Peak table for sample 3 : B49 Soni 7+4+5Cycles

Peak	Size [bp]	Conc. [pg/µl]	Molarity [pmol/l]	Observations
27	391	126.37	490.2	
28	408	270.87	1,006.8	
29	433	74.67	261.5	
30	446	208.92	710.5	
31	486	171.15	533.8	
32	544	194.99	543.3	
33	580	108.39	283.0	
34	665	62.94	143.5	
35	695	53.62	116.9	
36	827	65.91	120.8	
37	941	144.71	233.0	
38	1,487	13.21	13.5	
39	1,738	40.65	35.4	
40	1,988	10.19	7.8	
41	2,312	7.53	4.9	
42	2,704	5.43	3.0	
43	2,985	7.04	3.6	
44	3,380	6.35	2.8	
45	4,253	8.12	2.9	
46	5,614	4.68	1.3	
47	7,105	4.68	1.0	
48	10,380	75.00	10.9	Upper Marker
49	12,686	0.00	0.0	
50	13,793	0.00	0.0	

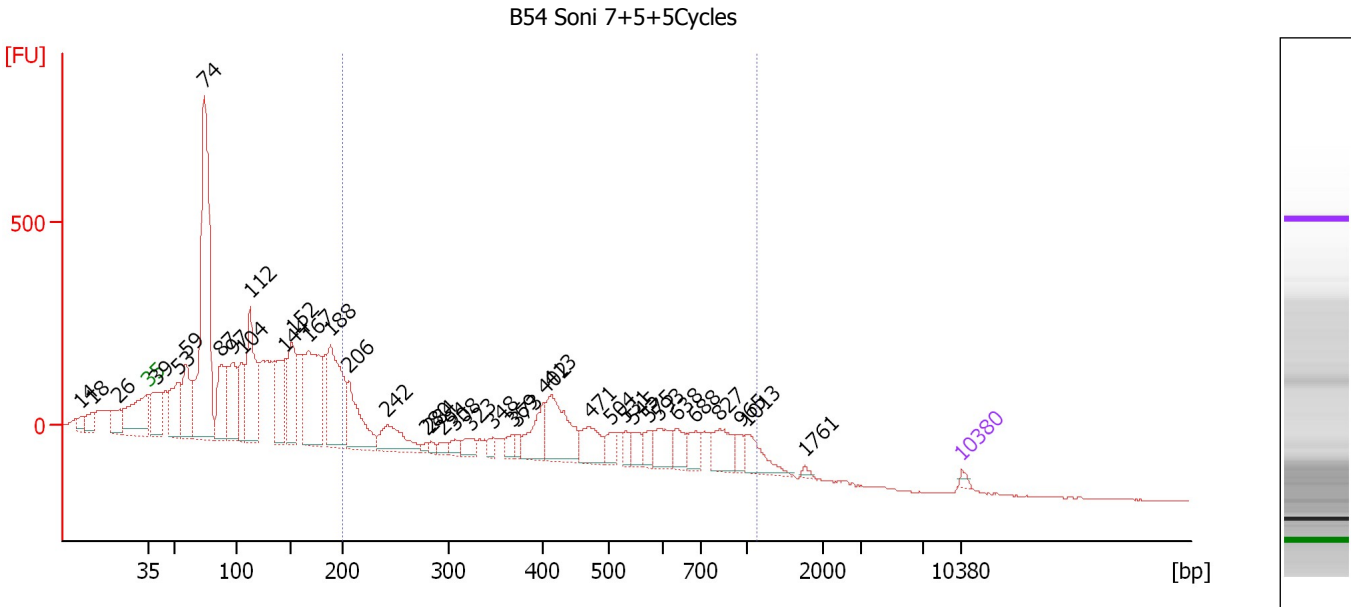
Region table for sample 3 : B49 Soni 7+4+5Cycles

From [bp]	To [bp]	Average Size [bp]	Molarity [pmol/l]	Conc. [pg/µl]	Corr. Area	% of Total	Size distribution in CV [%]	Color
200	1,100	452	17,167.2	4,072.74	3,279.6	42	42.0	

Assay Class: High Sensitivity DNA Assay
 Data Path: C:\...ents and Settings\Bioanalyzer\2012-07-11\2012-07-11_008.xad

Created: 7/11/2012 4:41:33 PM
 Modified: 7/11/2012 5:25:34 PM

Electropherogram Summary Continued ...



Overall Results for sample 4 : B54 Soni 7+5+5Cycles

Number of peaks found: 39 Corr. Area 1: 3,012.4
 Noise: 1.1

Peak table for sample 4 : B54 Soni 7+5+5Cycles

Peak	Size [bp]	Conc. [pg/μl]	Molarity [pmol/l]	Observations
1	14	0.00	0.0	
2	18	0.00	0.0	
3	26	0.00	0.0	
4	35	125.00	5,411.3	Lower Marker
5	39	1,808.11	70,293.0	
6	53	2,049.35	58,633.1	
7	59	2,191.65	56,341.0	
8	74	10,160.93	208,347.8	
9	87	2,059.74	35,815.2	
10	97	2,317.64	36,215.4	
11	104	1,536.34	22,287.4	
12	112	3,502.82	47,200.8	
13	144	2,095.37	21,981.9	
14	152	2,416.68	24,101.6	
15	167	4,050.27	36,765.1	
16	188	3,563.03	28,729.5	
17	206	1,959.27	14,445.3	
18	242	1,275.78	7,998.4	
19	280	123.76	668.8	
20	284	118.17	630.6	
21	294	206.73	1,064.9	
22	308	281.10	1,384.6	
23	323	365.52	1,712.6	
24	348	214.09	933.2	
25	369	250.83	1,029.8	
26	373	207.11	841.3	

Assay Class: High Sensitivity DNA Assay
 Data Path: C:\...ents and Settings\Bioanalyzer\2012-07-11\2012-07-11_008.xad


Created: 7/11/2012 4:41:33 PM
 Modified: 7/11/2012 5:25:34 PM

Electropherogram Summary Continued ...

... Peak table for sample 4 : B54 Soni 7+5+5Cycles

Peak	Size [bp]	Conc. [pg/μl]	Molarity [pmol/l]	Observations
27	402	1,080.36	4,067.2	
28	413	1,943.39	7,131.4	
29	471	897.72	2,884.8	
30	504	410.94	1,234.4	
31	531	279.43	797.5	
32	545	430.87	1,198.7	
33	575	308.68	813.3	
34	593	687.79	1,758.2	
35	638	509.96	1,211.0	
36	688	542.06	1,193.5	
37	827	812.08	1,488.1	
38	965	276.94	434.8	
39	1,013	706.14	1,056.1	
40	1,761	66.10	56.9	
41	10,380	75.00	10.9	Upper Marker

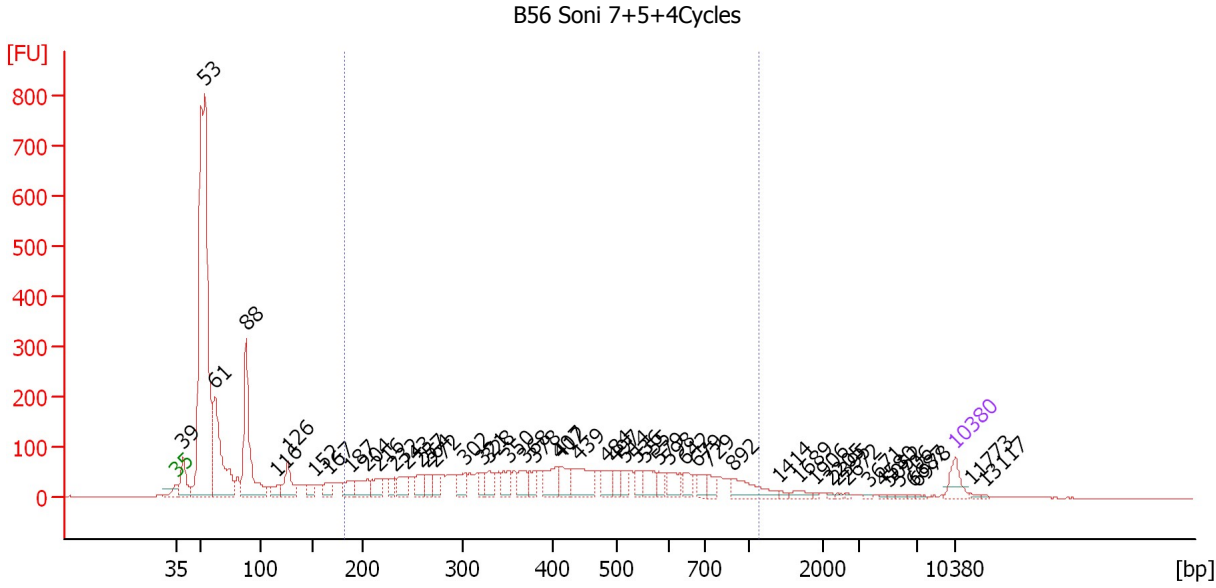
Region table for sample 4 : B54 Soni 7+5+5Cycles

From [bp]	To [bp]	Average Size [bp]	Molarity [pmol/l]	Conc. [pg/μl]	Corr. Area	% of Total	Size distribution in CV [%]	Color
200	1,137	523	46,448.4	11,856.38	3,012.4	29	42.4	

Assay Class: High Sensitivity DNA Assay
 Data Path: C:\...ents and Settings\Bioanalyzer\2012-07-11\2012-07-11_008.xad

Created: 7/11/2012 4:41:33 PM
 Modified: 7/11/2012 5:25:34 PM

Electropherogram Summary Continued ...



Overall Results for sample 5 : **B56 Soni 7+5+4Cycles**

Number of peaks found: 50 Corr. Area 1: 2,342.4
 Noise: 0.7

Peak table for sample 5 : **B56 Soni 7+5+4Cycles**

Peak	Size [bp]	Conc. [pg/μl]	Molarity [pmol/l]	Observations
1	35	125.00	5,411.3	Lower Marker
2	39	214.17	8,287.6	
3	53	3,242.95	93,210.9	
4	61	788.97	19,531.4	
5	88	760.31	13,155.5	
6	116	67.65	885.3	
7	126	179.31	2,152.4	
8	152	61.00	608.7	
9	167	82.57	749.1	
10	187	85.70	692.9	
11	204	132.22	981.1	
12	216	92.14	646.6	
13	232	61.28	400.4	
14	243	110.56	689.2	
15	257	84.60	497.8	
16	264	69.36	397.5	
17	272	89.44	497.5	
18	302	92.18	462.7	
19	321	63.39	298.9	
20	328	94.40	436.3	
21	350	85.45	370.3	
22	368	88.19	363.2	
23	378	68.13	272.7	
24	407	143.55	534.2	
25	412	96.92	356.3	
26	439	207.21	715.1	

Assay Class: High Sensitivity DNA Assay
 Data Path: C:\...ents and Settings\Bioanalyzer\2012-07-11\2012-07-11_008.xad

Created: 7/11/2012 4:41:33 PM
 Modified: 7/11/2012 5:25:34 PM

Electropherogram Summary Continued ...

... Peak table for sample 5 : B56 Soni 7+5+4Cycles

Peak	Size [bp]	Conc. [pg/µl]	Molarity [pmol/l]	Observations
27	484	104.75	327.6	
28	497	53.65	163.6	
29	514	64.26	189.5	
30	536	54.45	153.8	
31	555	101.52	277.2	
32	579	52.08	136.2	
33	598	95.40	241.8	
34	642	61.35	144.8	
35	679	55.37	123.5	
36	729	56.74	117.9	
37	892	131.23	222.9	
38	1,414	11.47	12.3	
39	1,689	27.85	25.0	
40	1,906	6.22	4.9	
41	2,205	6.49	4.5	
42	2,395	6.10	3.9	
43	2,672	5.54	3.1	
44	3,671	5.94	2.5	
45	4,580	4.19	1.4	
46	5,052	4.59	1.4	
47	5,706	6.64	1.8	
48	6,687	3.79	0.9	
49	6,978	5.58	1.2	
50	10,380	75.00	10.9	Upper Marker
51	11,773	0.00	0.0	
52	13,117	0.00	0.0	

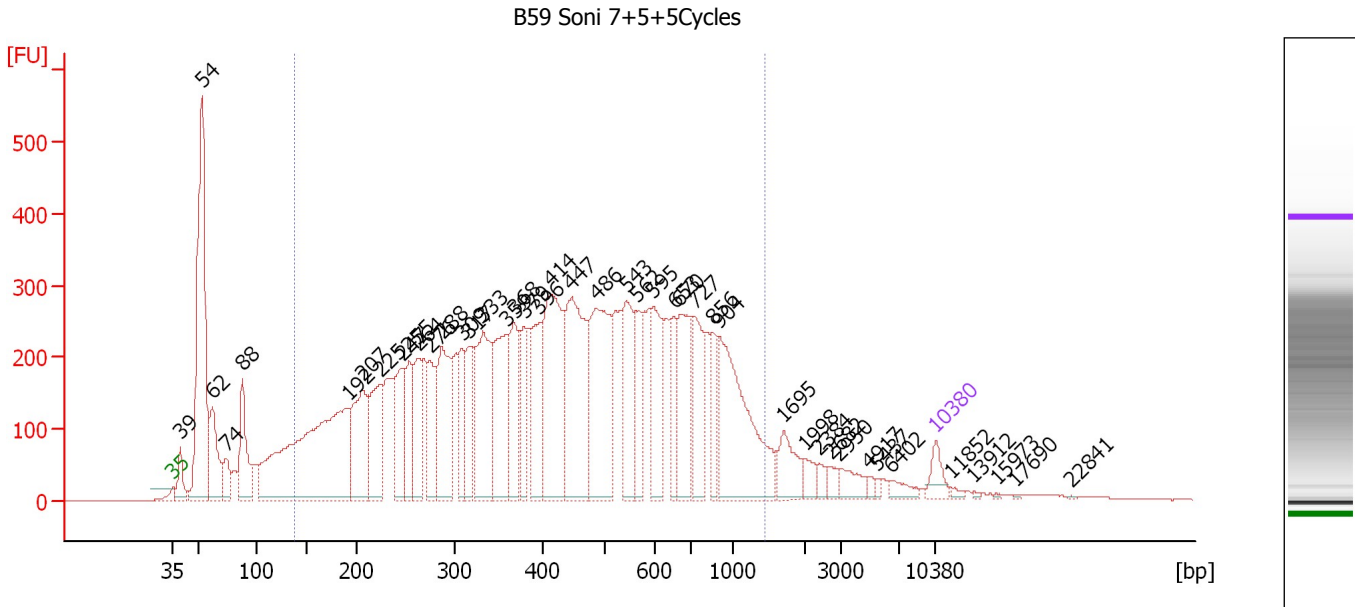
Region table for sample 5 : B56 Soni 7+5+4Cycles

From [bp]	To [bp]	Average Size [bp]	Molarity [pmol/l]	Conc. [pg/µl]	Corr. Area	% of Total	Size distribution in CV [%]	Color
182	1,136	451	13,764.8	3,189.29	2,342.4	42	42.9	■

Assay Class: High Sensitivity DNA Assay
 Data Path: C:\...ents and Settings\Bioanalyzer\2012-07-11\2012-07-11_008.xad

Created: 7/11/2012 4:41:33 PM
 Modified: 7/11/2012 5:25:34 PM

Electropherogram Summary Continued ...



Overall Results for sample 6 : B59 Soni 7+5+5Cycles

Number of peaks found: 44 Corr. Area 1: 12,015.7
 Noise: 0.7

Peak table for sample 6 : B59 Soni 7+5+5Cycles

Peak	Size [bp]	Conc. [pg/µl]	Molarity [pmol/l]	Observations
1	35	125.00	5,411.3	Lower Marker
2	39	166.13	6,413.6	
3	54	1,795.79	50,256.0	
4	62	405.49	9,852.4	
5	74	157.21	3,209.0	
6	88	405.98	6,960.0	
7	192	1,999.82	15,769.3	
8	207	576.65	4,227.1	
9	225	507.67	3,423.9	
10	247	397.27	2,437.2	
11	255	288.52	1,717.1	
12	264	331.53	1,899.9	
13	276	314.80	1,729.3	
14	288	585.81	3,084.1	
15	309	257.83	1,262.7	
16	317	297.60	1,421.5	
17	333	699.43	3,183.7	
18	359	554.49	2,337.8	
19	368	377.18	1,551.3	
20	379	250.12	999.3	
21	396	380.62	1,455.9	
22	414	872.74	3,192.7	
23	447	867.79	2,943.0	
24	486	843.85	2,629.6	
25	543	396.97	1,107.9	
26	562	256.22	691.0	

Assay Class: High Sensitivity DNA Assay
 Data Path: C:\...ents and Settings\Bioanalyzer\2012-07-11\2012-07-11_008.xad


Created: 7/11/2012 4:41:33 PM
 Modified: 7/11/2012 5:25:34 PM

Electropherogram Summary Continued ...

... Peak table for sample 6 : B59 Soni 7+5+5Cycles

Peak	Size [bp]	Conc. [pg/µl]	Molarity [pmol/l]	Observations
27	595	371.05	944.4	
28	653	203.64	472.6	
29	670	396.76	897.7	
30	727	327.69	683.4	
31	856	182.56	323.3	
32	904	808.31	1,355.2	
33	1,695	166.34	148.7	
34	1,998	62.14	47.1	
35	2,384	38.75	24.6	
36	2,682	39.55	22.3	
37	2,950	81.51	41.9	
38	4,917	16.77	5.2	
39	5,437	15.87	4.4	
40	6,402	51.37	12.2	
41	10,380	75.00	10.9	Upper Marker
42	11,852	0.00	0.0	
43	13,912	0.00	0.0	
44	15,973	0.00	0.0	
45	17,690	0.00	0.0	
46	22,841	0.00	0.0	

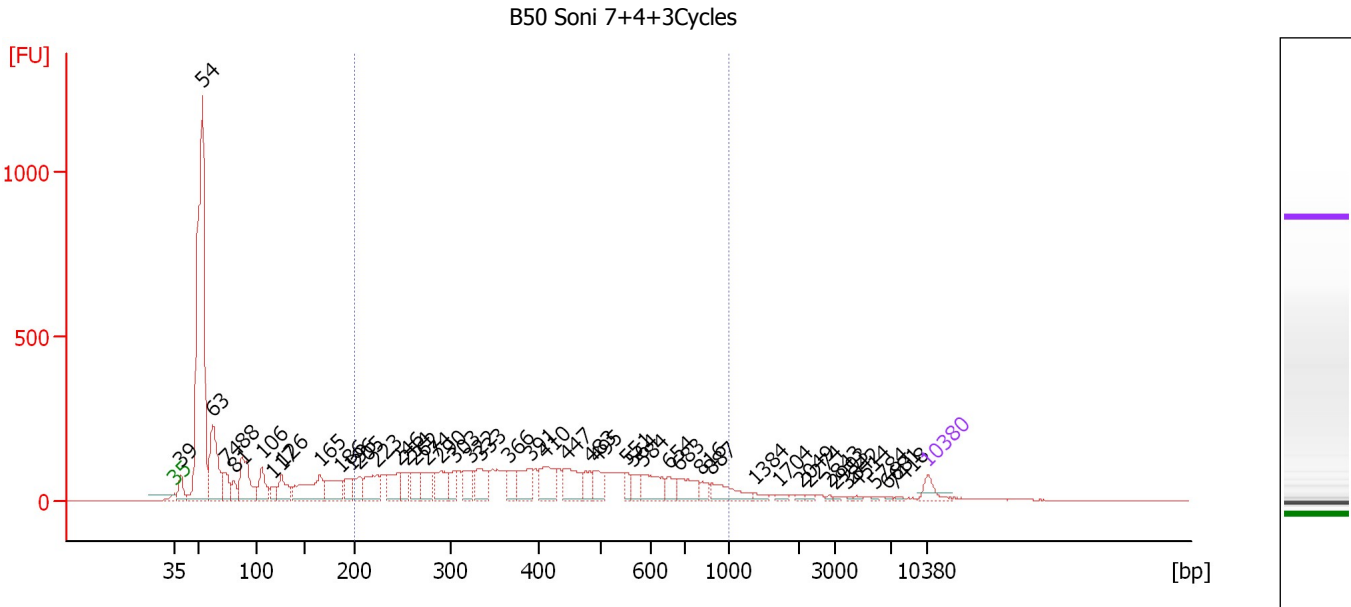
Region table for sample 6 : B59 Soni 7+5+5Cycles

From [bp]	To [bp]	Average Size [bp]	Molarity [pmol/l]	Conc. [pg/µl]	Corr. Area	% of Total	Size distribution in CV [%]	Color
139	1,433	476	68,104.5	15,001.67	12,015.7	80	50.5	

Assay Class: High Sensitivity DNA Assay
 Data Path: C:\...ents and Settings\Bioanalyzer\2012-07-11\2012-07-11_008.xad

Created: 7/11/2012 4:41:33 PM
 Modified: 7/11/2012 5:25:34 PM

Electropherogram Summary Continued ...



Overall Results for sample 7 : B50 Soni 7+4+3Cycles

Number of peaks found: 46 Corr. Area 1: 3,876.5
 Noise: 0.4

Peak table for sample 7 : B50 Soni 7+4+3Cycles

Peak	Size [bp]	Conc. [pg/µl]	Molarity [pmol/l]	Observations
1	35	125.00	5,411.3	Lower Marker
2	39	178.39	6,882.4	
3	54	3,626.38	102,051.7	
4	63	804.24	19,475.1	
5	74	207.38	4,242.9	
6	81	121.14	2,267.5	
7	88	520.57	8,979.6	
8	106	248.66	3,565.9	
9	117	100.63	1,303.7	
10	126	229.43	2,757.2	
11	165	490.98	4,514.7	
12	186	276.59	2,249.9	
13	196	144.44	1,116.9	
14	205	175.79	1,301.6	
15	223	277.08	1,885.1	
16	246	245.91	1,513.0	
17	254	140.29	837.1	
18	262	184.65	1,069.5	
19	274	216.71	1,197.5	
20	290	240.22	1,257.1	
21	303	121.85	609.4	
22	322	178.16	839.0	
23	333	240.27	1,094.3	
24	366	133.27	551.7	
25	391	232.30	900.6	
26	410	284.78	1,051.7	

Assay Class: High Sensitivity DNA Assay
 Data Path: C:\...ents and Settings\Bioanalyzer\2012-07-11\2012-07-11_008.xad

Created: 7/11/2012 4:41:33 PM
 Modified: 7/11/2012 5:25:34 PM

Electropherogram Summary Continued ...

... Peak table for sample 7 : B50 Soni 7+4+3Cycles

Peak	Size [bp]	Conc. [pg/µl]	Molarity [pmol/l]	Observations
27	447	264.83	898.7	
28	483	122.82	385.5	
29	495	134.36	411.4	
30	551	72.26	198.8	
31	564	89.59	240.5	
32	584	212.71	551.5	
33	654	94.86	219.7	
34	683	169.84	376.5	
35	816	61.28	113.8	
36	887	165.28	282.4	
37	1,384	30.69	33.6	
38	1,704	21.80	19.4	
39	2,049	14.62	10.8	
40	2,274	11.76	7.8	
41	2,843	8.23	4.4	
42	2,993	8.39	4.2	
43	3,842	7.25	2.9	
44	4,514	9.88	3.3	
45	5,784	6.87	1.8	
46	6,681	6.75	1.5	
47	7,418	7.34	1.5	
48	10,380	75.00	10.9	Upper Marker

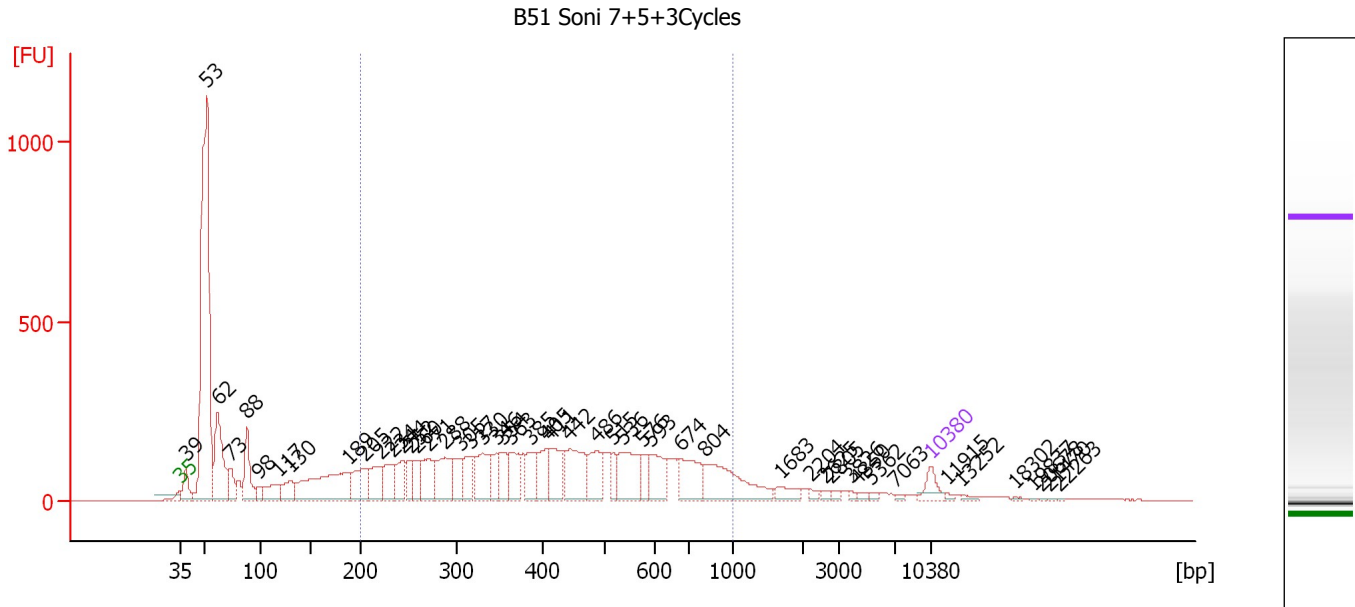
Region table for sample 7 : B50 Soni 7+4+3Cycles

From [bp]	To [bp]	Average Size [bp]	Molarity [pmol/l]	Conc. [pg/µl]	Corr. Area	% of Total	Size distribution in CV [%]	Color
200	1,000	430	21,199.7	4,899.22	3,876.5	46	39.9	

Assay Class: High Sensitivity DNA Assay
 Data Path: C:\...ents and Settings\Bioanalyzer\2012-07-11\2012-07-11_008.xad

Created: 7/11/2012 4:41:33 PM
 Modified: 7/11/2012 5:25:34 PM

Electropherogram Summary Continued ...



Overall Results for sample 8 : B51 Soni 7+5+3Cycles

Number of peaks found: 49 Corr. Area 1: 5,559.0
 Noise: 0.4

Peak table for sample 8 : B51 Soni 7+5+3Cycles

Peak	Size [bp]	Conc. [pg/μl]	Molarity [pmol/l]	Observations
1	35	125.00	5,411.3	Lower Marker
2	39	179.61	6,985.7	
3	53	3,046.28	87,104.2	
4	62	692.93	16,878.5	
5	73	174.99	3,619.1	
6	88	347.31	6,011.2	
7	98	83.83	1,294.2	
8	117	204.18	2,639.0	
9	130	178.10	2,081.9	
10	189	743.91	5,966.8	
11	205	295.33	2,186.8	
12	222	251.93	1,722.2	
13	234	221.65	1,433.5	
14	244	190.60	1,185.4	
15	252	131.95	793.8	
16	260	161.54	943.0	
17	271	238.80	1,334.7	
18	288	313.51	1,651.9	
19	305	201.28	999.6	
20	317	181.40	866.4	
21	330	290.93	1,335.8	
22	346	151.41	662.2	
23	354	151.79	650.2	
24	363	232.07	969.2	
25	385	213.74	840.5	
26	405	179.85	672.8	

Assay Class: High Sensitivity DNA Assay
 Data Path: C:\...ents and Settings\Bioanalyzer\2012-07-11\2012-07-11_008.xad


Created: 7/11/2012 4:41:33 PM
 Modified: 7/11/2012 5:25:34 PM

Electropherogram Summary Continued ...

... Peak table for sample 8 : B51 Soni 7+5+3Cycles

Peak	Size [bp]	Conc. [pg/μl]	Molarity [pmol/l]	Observations
27	411	254.62	938.5	
28	442	368.77	1,263.4	
29	486	251.42	784.6	
30	515	99.39	292.3	
31	536	341.51	964.9	
32	576	94.98	249.6	
33	593	210.04	536.3	
34	674	268.01	602.7	
35	804	433.62	816.8	
36	1,683	68.79	61.9	
37	2,204	20.10	13.8	
38	2,625	19.13	11.0	
39	2,805	16.98	9.2	
40	3,826	11.12	4.4	
41	4,350	18.64	6.5	
42	5,362	13.29	3.8	
43	7,063	11.39	2.4	
44	10,380	75.00	10.9	Upper Marker
45	11,915	0.00	0.0	
46	13,252	0.00	0.0	
47	18,302	0.00	0.0	
48	19,837	0.00	0.0	
49	20,678	0.00	0.0	
50	21,470	0.00	0.0	
51	22,263	0.00	0.0	

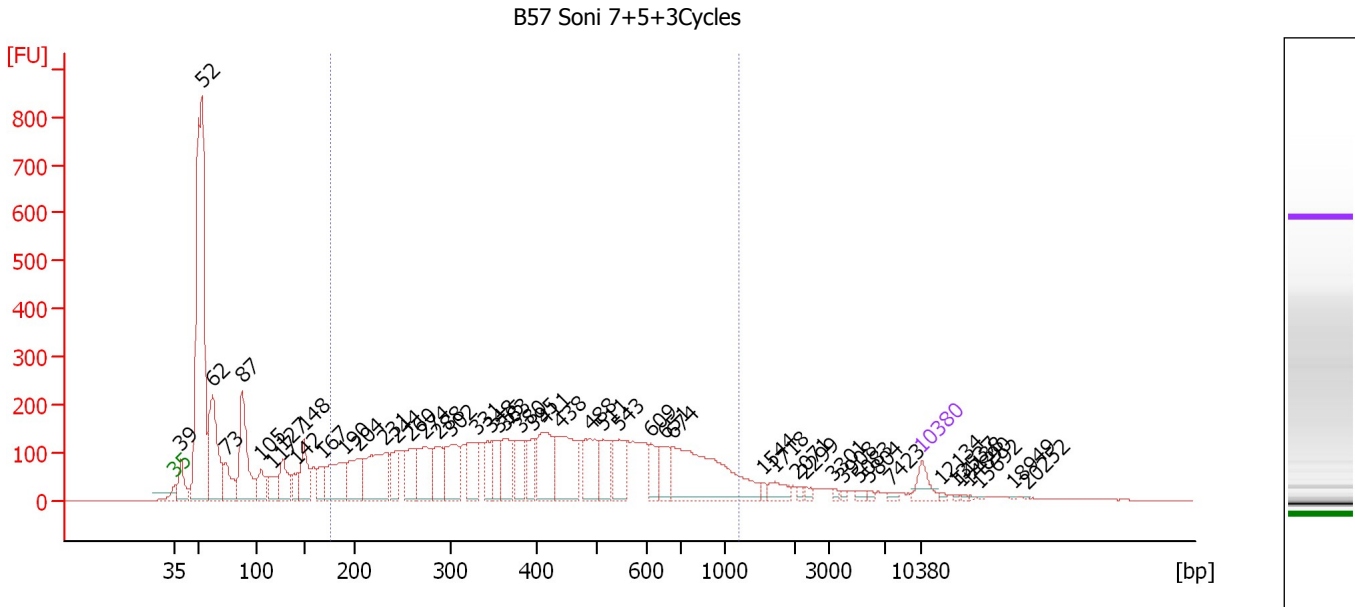
Region table for sample 8 : B51 Soni 7+5+3Cycles

From [bp]	To [bp]	Average Size [bp]	Molarity [pmol/l]	Conc. [pg/μl]	Corr. Area	% of Total	Size distribution in CV [%]	Color
200	1,000	448	24,158.8	5,762.61	5,559.0	53	40.1	

Assay Class: High Sensitivity DNA Assay
 Data Path: C:\...ents and Settings\Bioanalyzer\2012-07-11\2012-07-11_008.xad

Created: 7/11/2012 4:41:33 PM
 Modified: 7/11/2012 5:25:34 PM

Electropherogram Summary Continued ...



Overall Results for sample 9 : B57 Soni 7+5+3Cycles

Number of peaks found: 49 Corr. Area 1: 5,661.0
 Noise: 0.5

Peak table for sample 9 : B57 Soni 7+5+3Cycles

Peak	Size [bp]	Conc. [pg/μl]	Molarity [pmol/l]	Observations
1	35	125.00	5,411.3	Lower Marker
2	39	242.56	9,503.9	
3	52	2,777.33	80,387.6	
4	62	787.74	19,352.8	
5	73	258.28	5,336.5	
6	87	667.89	11,589.0	
7	105	170.67	2,467.4	
8	117	145.95	1,893.3	
9	127	251.58	2,997.5	
10	142	117.53	1,255.0	
11	148	268.79	2,743.6	
12	167	135.17	1,226.4	
13	190	383.68	3,052.5	
14	204	296.71	2,202.0	
15	231	540.31	3,537.7	
16	244	189.77	1,177.5	
17	260	248.20	1,447.7	
18	274	334.25	1,846.9	
19	288	239.87	1,263.9	
20	302	314.34	1,579.1	
21	331	255.70	1,172.2	
22	348	156.86	683.4	
23	355	135.92	579.9	
24	363	228.67	954.2	
25	380	187.54	747.1	
26	395	164.88	632.3	

Assay Class: High Sensitivity DNA Assay
 Data Path: C:\...ents and Settings\Bioanalyzer\2012-07-11\2012-07-11_008.xad


Created: 7/11/2012 4:41:33 PM
 Modified: 7/11/2012 5:25:34 PM

Electropherogram Summary Continued ...

... Peak table for sample 9 : B57 Soni 7+5+3Cycles

Peak	Size [bp]	Conc. [pg/µl]	Molarity [pmol/l]	Observations
27	411	349.17	1,285.8	
28	438	430.69	1,490.8	
29	488	277.02	860.7	
30	511	189.89	563.5	
31	543	205.62	574.0	
32	609	110.79	275.8	
33	651	162.70	378.8	
34	674	771.41	1,733.5	
35	1,544	21.07	20.7	
36	1,718	64.70	57.1	
37	2,071	15.15	11.1	
38	2,299	17.28	11.4	
39	3,301	11.64	5.3	
40	3,908	11.79	4.6	
41	5,083	14.81	4.4	
42	5,804	11.22	2.9	
43	7,423	12.44	2.5	
44	10,380	75.00	10.9	Upper Marker
45	12,134	0.00	0.0	
46	13,537	0.00	0.0	
47	14,138	0.00	0.0	
48	14,890	0.00	0.0	
49	15,692	0.00	0.0	
50	18,949	0.00	0.0	
51	20,252	0.00	0.0	

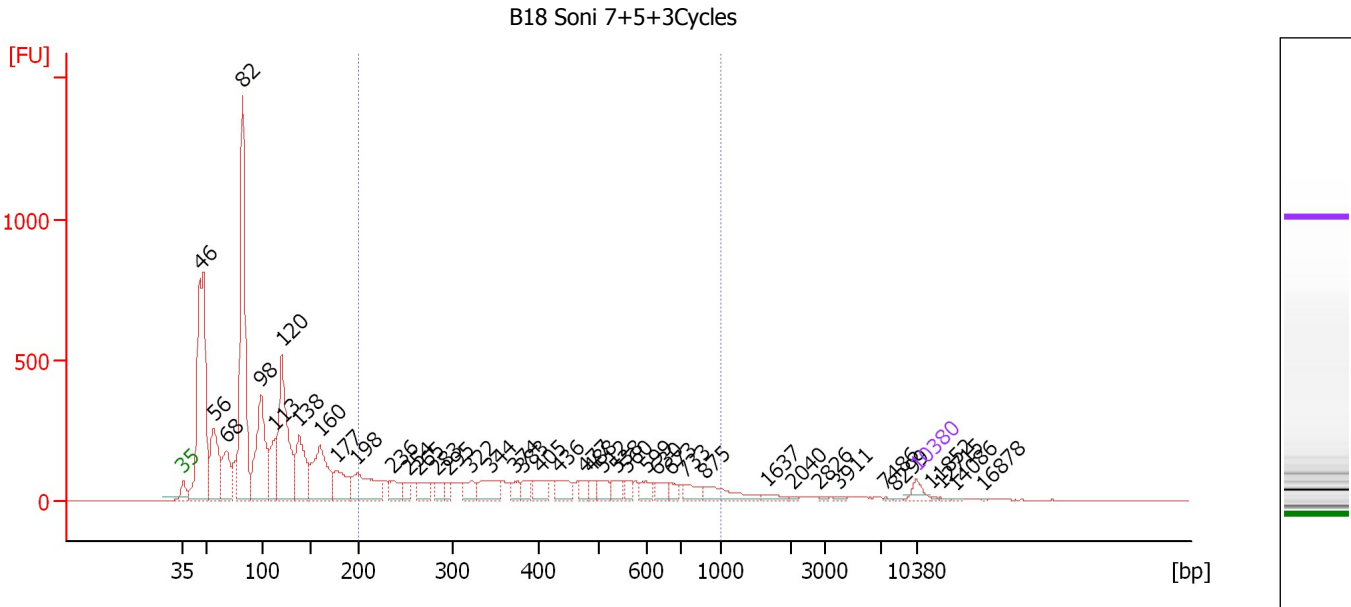
Region table for sample 9 : B57 Soni 7+5+3Cycles

From [bp]	To [bp]	Average Size [bp]	Molarity [pmol/l]	Conc. [pg/µl]	Corr. Area	% of Total	Size distribution in CV [%]	Color
177	1,221	450	30,526.8	6,924.89	5,661.0	57	45.3	

Assay Class: High Sensitivity DNA Assay
 Data Path: C:\...ents and Settings\Bioanalyzer\2012-07-11\2012-07-11_008.xad

Created: 7/11/2012 4:41:33 PM
 Modified: 7/11/2012 5:25:34 PM

Electropherogram Summary Continued ...



Overall Results for sample 10 : B18 Soni 7+5+3Cycles

Number of peaks found: 42 Corr. Area 1: 3,041.9
 Noise: 0.5

Peak table for sample 10 : B18 Soni 7+5+3Cycles

Peak	Size [bp]	Conc. [pg/μl]	Molarity [pmol/l]	Observations
1	35	125.00	5,411.3	Lower Marker
2	46	3,275.17	108,316.3	
3	56	979.87	26,309.5	
4	68	632.05	14,131.4	
5	82	3,070.66	56,780.6	
6	98	1,493.23	22,975.9	
7	113	521.59	7,019.9	
8	120	1,828.98	23,138.8	
9	138	821.75	9,022.4	
10	160	1,029.70	9,778.4	
11	177	474.22	4,066.8	
12	198	672.05	5,136.7	
13	236	228.63	1,464.8	
14	254	109.80	655.1	
15	265	184.64	1,057.0	
16	283	123.31	659.6	
17	295	91.97	473.2	
18	322	192.11	904.1	
19	344	285.46	1,255.9	
20	374	104.66	424.4	
21	383	128.59	508.7	
22	405	196.91	736.5	
23	436	193.85	673.4	
24	477	95.58	303.6	
25	488	83.23	258.6	
26	512	140.47	415.7	

Assay Class: High Sensitivity DNA Assay
 Data Path: C:\...ents and Settings\Bioanalyzer\2012-07-11\2012-07-11_008.xad


Created: 7/11/2012 4:41:33 PM
 Modified: 7/11/2012 5:25:34 PM

Electropherogram Summary Continued ...

... Peak table for sample 10 : B18 Soni 7+5+3Cycles

Peak	Size [bp]	Conc. [pg/µl]	Molarity [pmol/l]	Observations
27	538	118.87	334.7	
28	560	90.86	245.9	
29	599	123.21	311.7	
30	630	117.37	282.3	
31	673	79.26	178.5	
32	733	130.68	270.0	
33	875	220.45	381.9	
34	1,637	52.01	48.1	
35	2,040	12.90	9.6	
36	2,826	12.03	6.5	
37	3,911	15.67	6.1	
38	7,486	7.27	1.5	
39	8,299	7.69	1.4	
40	10,380	75.00	10.9	Upper Marker
41	11,852	0.00	0.0	
42	12,715	0.00	0.0	
43	14,086	0.00	0.0	
44	16,878	0.00	0.0	

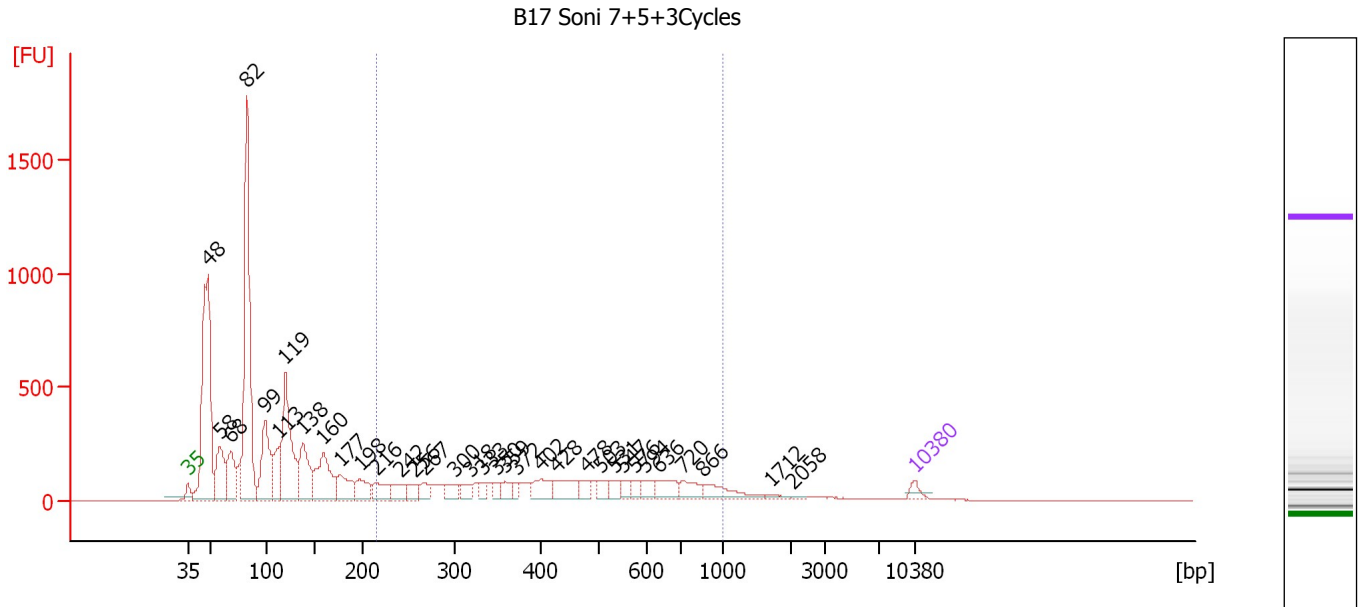
Region table for sample 10 : B18 Soni 7+5+3Cycles

From [bp]	To [bp]	Average Size [bp]	Molarity [pmol/l]	Conc. [pg/µl]	Corr. Area	% of Total	Size distribution in CV [%]	Color
200	1,000	437	18,315.7	4,198.66	3,041.9	27	41.6	

Assay Class: High Sensitivity DNA Assay
 Data Path: C:\...ents and Settings\Bioanalyzer\2012-07-11\2012-07-11_008.xad

Created: 7/11/2012 4:41:33 PM
 Modified: 7/11/2012 5:25:34 PM

Electropherogram Summary Continued ...



Overall Results for sample 11 : B17 Soni 7+5+3Cycles

Number of peaks found: 34 Corr. Area 1: 3,474.8
 Noise: 0.5

Peak table for sample 11 : B17 Soni 7+5+3Cycles

Peak	Size [bp]	Conc. [pg/µl]	Molarity [pmol/l]	Observations
1	35	125.00	5,411.3	Lower Marker
2	48	4,373.27	137,230.0	
3	58	1,001.33	26,122.7	
4	68	853.85	19,003.4	
5	82	4,486.50	82,534.0	
6	99	1,441.48	22,161.4	
7	113	645.99	8,677.9	
8	119	2,172.58	27,552.4	
9	138	1,030.27	11,323.6	
10	160	1,164.40	11,055.6	
11	177	548.10	4,681.2	
12	198	400.17	3,062.0	
13	216	365.82	2,564.4	
14	242	281.24	1,763.1	
15	256	188.26	1,112.3	
16	267	222.17	1,262.3	
17	300	224.69	1,136.3	
18	318	184.18	878.2	
19	333	105.44	480.0	
20	350	121.08	524.4	
21	359	178.81	754.2	
22	372	100.96	410.8	
23	402	311.42	1,174.1	
24	428	367.94	1,303.1	
25	478	188.14	596.5	
26	503	177.73	535.8	

Assay Class: High Sensitivity DNA Assay
 Data Path: C:\...ents and Settings\Bioanalyzer\2012-07-11\2012-07-11_008.xad

Created: 7/11/2012 4:41:33 PM
 Modified: 7/11/2012 5:25:34 PM

Electropherogram Summary Continued ...

... Peak table for sample 11 : B17 Soni 7+5+3Cycles

Peak	Size [bp]	Conc. [pg/μl]	Molarity [pmol/l]	Observations
27	531	163.32	466.1	
28	547	122.13	338.1	
29	576	110.52	290.8	
30	594	164.51	419.4	
31	636	279.34	665.0	
32	720	245.55	516.7	
33	866	291.31	509.5	
34	1,712	36.18	32.0	
35	2,058	11.02	8.1	
36	▶ 10,380	75.00	10.9	Upper Marker

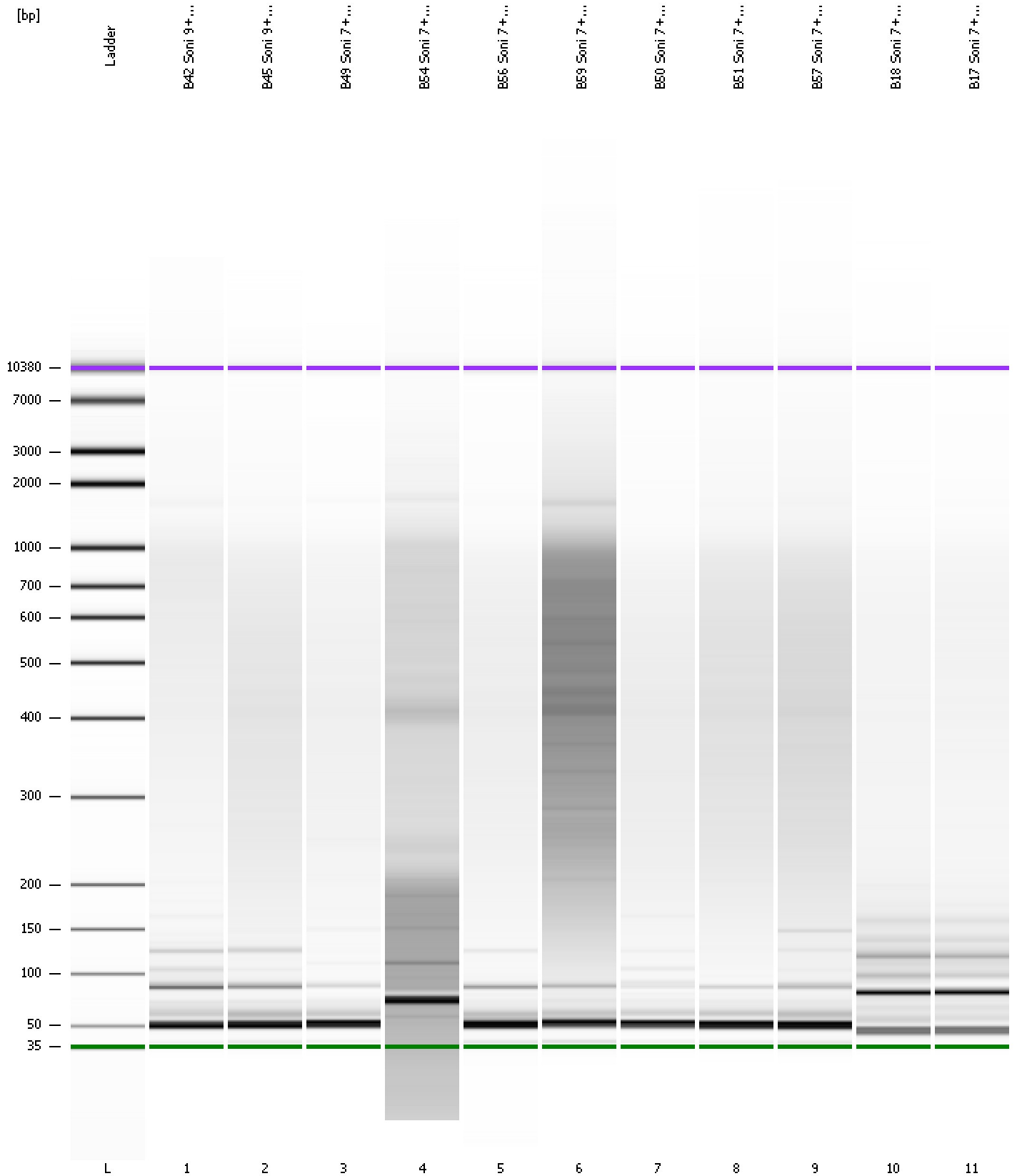
Region table for sample 11 : B17 Soni 7+5+3Cycles

From [bp]	To [bp]	Average Size [bp]	Molarity [pmol/l]	Conc. [pg/μl]	Corr. Area	% of Total	Size distribution in CV [%]	Color
215	1,000	466	21,735.6	5,397.90	3,474.8	28	39.4	

Assay Class: High Sensitivity DNA Assay
Data Path: C:\...ents and Settings\Bioanalyzer\2012-07-11\2012-07-11_008.xad

Created: 7/11/2012 4:41:33 PM
Modified: 7/11/2012 5:25:34 PM

Gel Image



Assay Class: High Sensitivity DNA Assay
 Data Path: C:\...ents and Settings\Bioanalyzer\2012-07-11\2012-07-11_008.xad

Created: 7/11/2012 4:41:33 PM
 Modified: 7/11/2012 5:25:34 PM

Run Logbook

Description	Number	Source	Category	Sub Category	Time	Time Zone	User	Host
Run ended on port 1 (Number of wells acquired: 12)		Instrument	Run		7/11/2012 5:22:54 PM	(GMT --07:00) Pacific Standard Time	UC Davis	D8XSMGH1
Run started on port 1 (File: C:\Documents and Settings\Bioanalyzer\2012-07-11\2012-07-11_008.xad)		Instrument	Run		7/11/2012 4:41:38 PM	(GMT --07:00) Pacific Standard Time	UC Davis	D8XSMGH1
Product Number : G2938B		Instrument	Run		7/11/2012 4:41:38 PM	(GMT --07:00) Pacific Standard Time	UC Davis	D8XSMGH1
Name :		Instrument	Run		7/11/2012 4:41:38 PM	(GMT --07:00) Pacific Standard Time	UC Davis	D8XSMGH1
Vendor : Agilent Technologies		Instrument	Run		7/11/2012 4:41:38 PM	(GMT --07:00) Pacific Standard Time	UC Davis	D8XSMGH1
Serial# : DE13701086		Instrument	Run		7/11/2012 4:41:38 PM	(GMT --07:00) Pacific Standard Time	UC Davis	D8XSMGH1
Firmware : C.01.069		Instrument	Run		7/11/2012 4:41:38 PM	(GMT --07:00) Pacific Standard Time	UC Davis	D8XSMGH1
Cartridge : Electrode		Instrument	Run		7/11/2012 4:41:38 PM	(GMT --07:00) Pacific Standard Time	UC Davis	D8XSMGH1