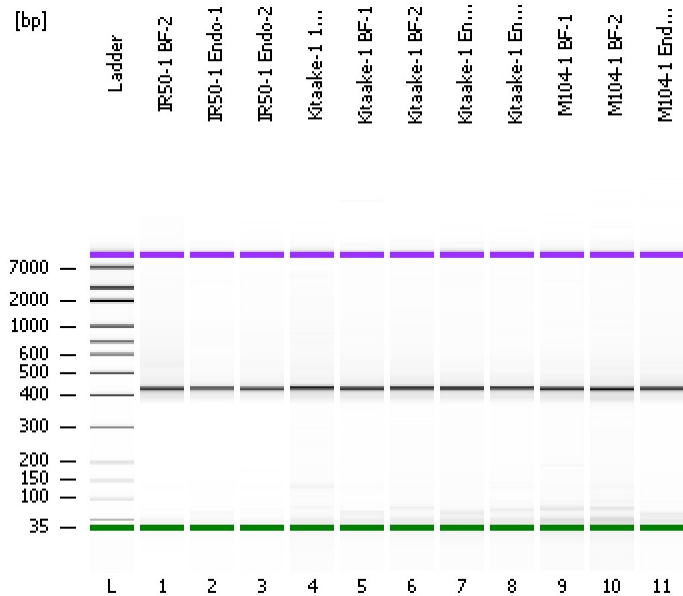


Assay Class: High Sensitivity DNA Assay
Data Path: C:\...ents and Settings\Bioanalyzer\2012-07-12\2012-07-12_002.xad

Created: 7/12/2012 10:09:31 AM
Modified: 7/12/2012 10:58:21 AM

Electrophoresis File Run Summary



Instrument Information:

Instrument Name: DE13701086 Firmware: C.01.069
Serial#: DE13701086 Type: G2938B

Assay Information:

Assay Origin Path: C:\Program Files\Agilent\2100 bioanalyzer\2100 expert\assays\dsDNA\High Sensitivity DNA.xsy
Assay Class: High Sensitivity DNA Assay
Version: 1.03
Assay Comments: Copyright © 2003-2010 Agilent Technologies

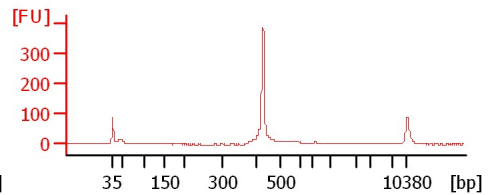
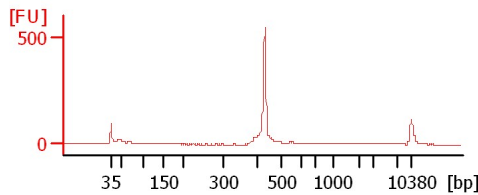
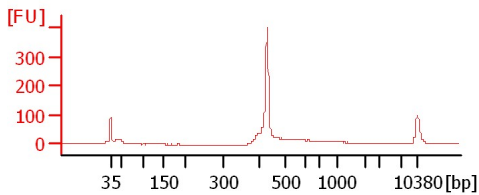
Chip Information:

Chip Lot #:
Reagent Kit Lot #:
Chip Comments:

IR50-1 BF-2

IR50-1 Endo-1

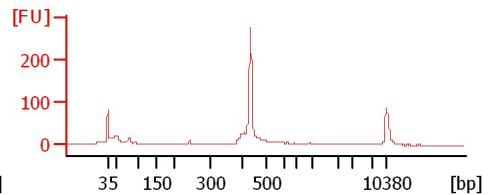
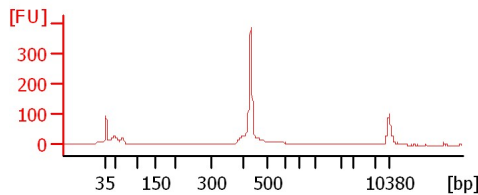
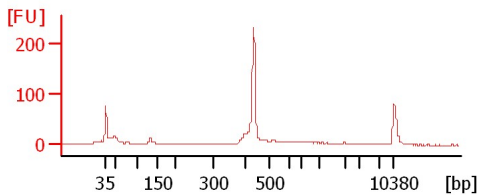
IR50-1 Endo-2



Kitaake-1 1mm

Kitaake-1 BF-1

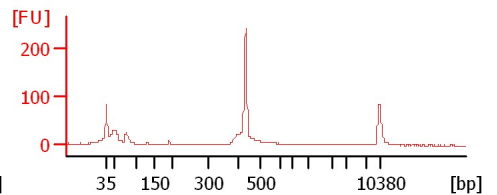
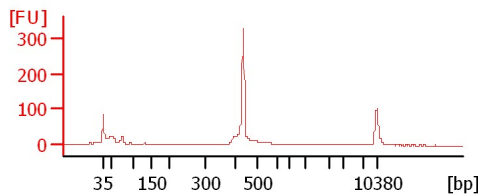
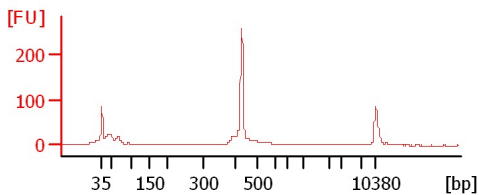
Kitaake-1 BF-2



Kitaake-1 Endo-1

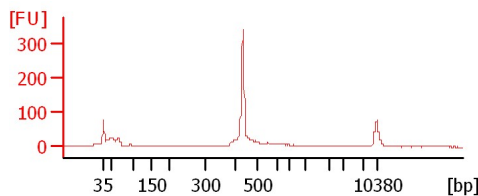
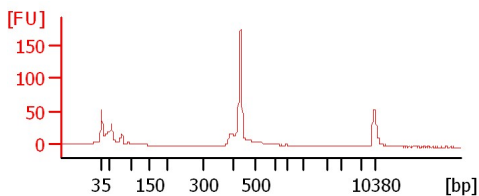
Kitaake-1 Endo-2

M104-1 BF-1



M104-1 BF-2

M104-1 Endo-1



Assay Class: High Sensitivity DNA Assay
 Data Path: C:\...ents and Settings\Bioanalyzer\2012-07-12\2012-07-12_002.xad

Created: 7/12/2012 10:09:31 AM
 Modified: 7/12/2012 10:58:21 AM

Electrophoresis File Run Summary (Chip Summary)

| Sample Name | Sample Comment | Rest. Digest | Status | Observation | Result Label | Result Color |
|------------------|----------------|--------------------------|--------|-------------|--------------|--------------|
| IR50-1 BF-2 | | <input type="checkbox"/> | ✓ | | | |
| IR50-1 Endo-1 | | <input type="checkbox"/> | ✓ | | | |
| IR50-1 Endo-2 | | <input type="checkbox"/> | ✓ | | | |
| Kitaake-1 1mm | | <input type="checkbox"/> | ✓ | | | |
| Kitaake-1 BF-1 | | <input type="checkbox"/> | ✓ | | | |
| Kitaake-1 BF-2 | | <input type="checkbox"/> | ✓ | | | |
| Kitaake-1 Endo-1 | | <input type="checkbox"/> | ✓ | | | |
| Kitaake-1 Endo-2 | | <input type="checkbox"/> | ✓ | | | |
| M104-1 BF-1 | | <input type="checkbox"/> | ✓ | | | |
| M104-1 BF-2 | | <input type="checkbox"/> | ✓ | | | |
| M104-1 Endo-1 | | <input type="checkbox"/> | ✓ | | | |
| Ladder | | <input type="checkbox"/> | ✓ | | | |

Chip Lot #

Reagent Kit Lot #

Chip Comments :

Assay Class: High Sensitivity DNA Assay
Data Path: C:\...ents and Settings\Bioanalyzer\2012-07-12\2012-07-12_002.xad

Created: 7/12/2012 10:09:31 AM
Modified: 7/12/2012 10:58:21 AM

Electrophoresis Assay Details

General Analysis Settings

Number of Available Sample and Ladder Wells (Max.) : 12
Minimum Visible Range [s] : 32
Maximum Visible Range [s] : 138
Start Analysis Time Range [s] : 33
End Analysis Time Range [s] : 137.5
Ladder Concentration [pg/μl] : 1950
Uses Standard Area for Ladder Fragments
Lower Marker Concentration [pg/μl] : 125
Upper Marker Concentration [pg/μl] : 75
Used Upper Marker for Quantitation
Standard Curve Fit is Point to Point
Show Data Aligned to Lower and Upper Marker

Integrator Settings

Integration Start Time [s] : 33.05
Integration End Time [s] : 137
Slope Threshold : 0.8
Height Threshold [FU] : 5
Area Threshold : 0.1
Width Threshold [s] : 0.6
Baseline Plateau [s] : 0.5

Filter Settings

Filter Width [s] : 0.5
Polynomial Order : 4

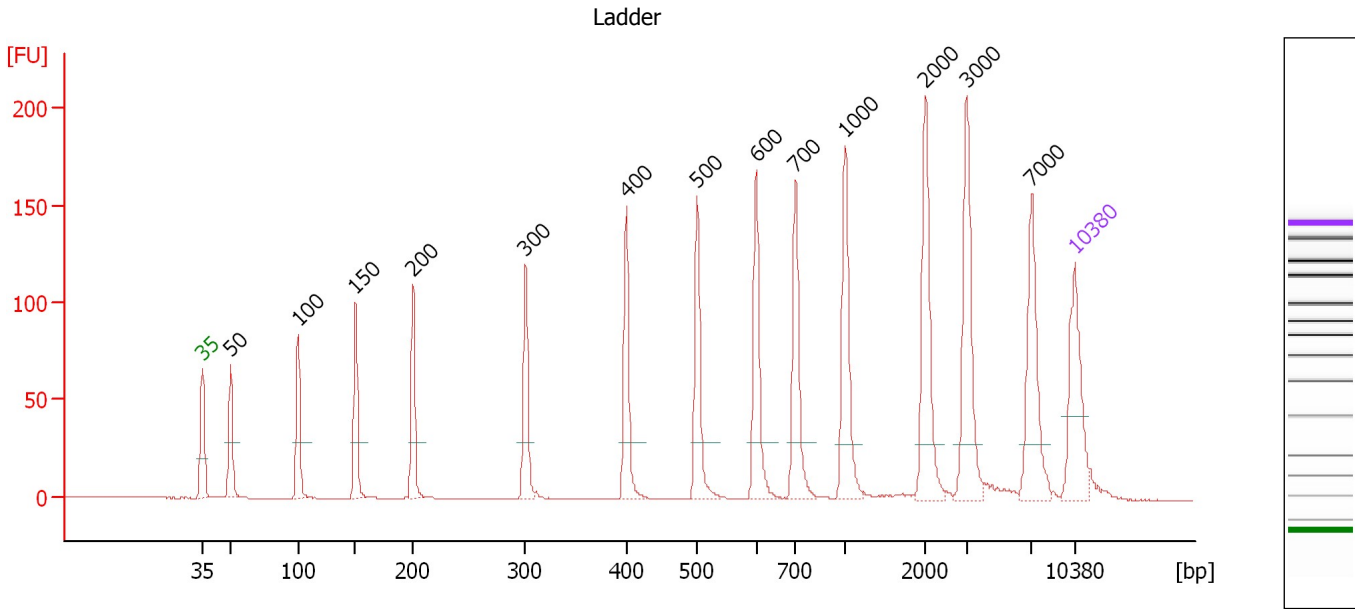
Ladder

| Ladder Peak | Size | Area |
|-------------|-------|------|
| 1 | 35 | 160 |
| 2 | 50 | 210 |
| 3 | 100 | 208 |
| 4 | 150 | 221 |
| 5 | 200 | 242 |
| 6 | 300 | 270 |
| 7 | 400 | 305 |
| 8 | 500 | 306 |
| 9 | 600 | 336 |
| 10 | 700 | 321 |
| 11 | 1000 | 366 |
| 12 | 2000 | 413 |
| 13 | 3000 | 411 |
| 14 | 7000 | 400 |
| 15 | 10380 | 214 |

Assay Class: High Sensitivity DNA Assay
 Data Path: C:\...ents and Settings\Bioanalyzer\2012-07-12\2012-07-12_002.xad

Created: 7/12/2012 10:09:31 AM
 Modified: 7/12/2012 10:58:21 AM

Electropherogram Summary



Overall Results for Ladder

Noise: 0.2

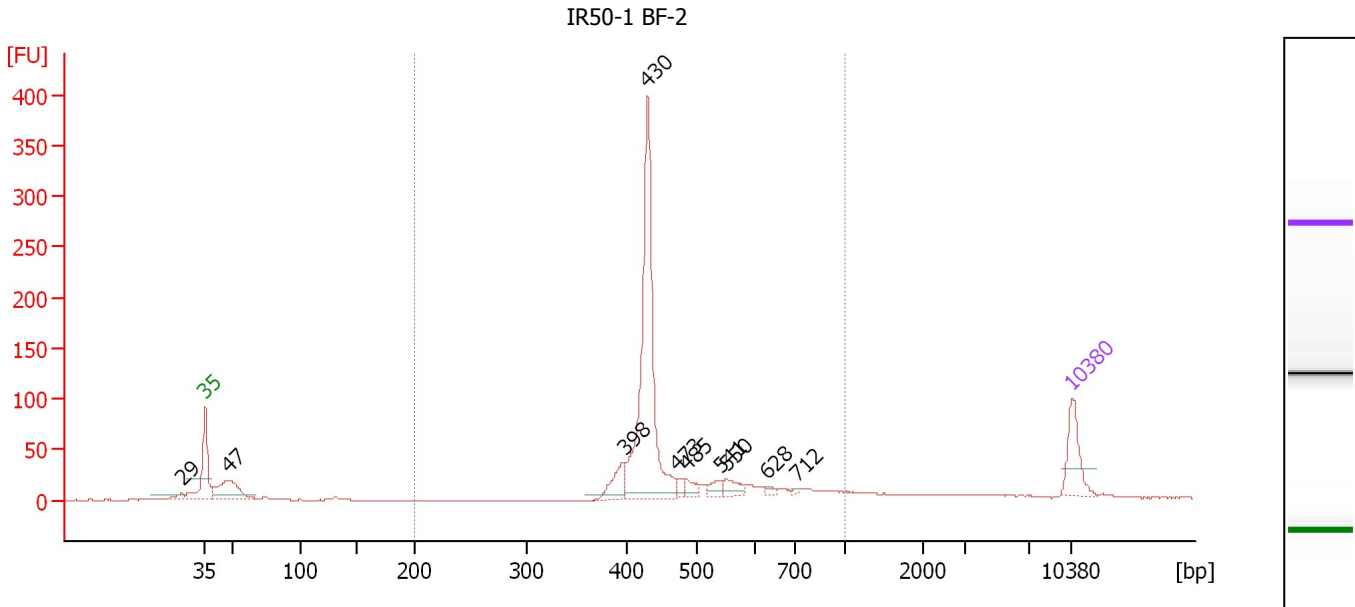
Peak table for Ladder

| Peak | Size [bp] | Conc. [pg/µl] | Molarity [pmol/l] | Observations |
|------|-----------|---------------|-------------------|--------------|
| 1 | 35 | 125.00 | 5,411.3 | Lower Marker |
| 2 | 50 | 150.00 | 4,545.5 | Ladder Peak |
| 3 | 100 | 150.00 | 2,272.7 | Ladder Peak |
| 4 | 150 | 150.00 | 1,515.2 | Ladder Peak |
| 5 | 200 | 150.00 | 1,136.4 | Ladder Peak |
| 6 | 300 | 150.00 | 757.6 | Ladder Peak |
| 7 | 400 | 150.00 | 568.2 | Ladder Peak |
| 8 | 500 | 150.00 | 454.5 | Ladder Peak |
| 9 | 600 | 150.00 | 378.8 | Ladder Peak |
| 10 | 700 | 150.00 | 324.7 | Ladder Peak |
| 11 | 1,000 | 150.00 | 227.3 | Ladder Peak |
| 12 | 2,000 | 150.00 | 113.6 | Ladder Peak |
| 13 | 3,000 | 150.00 | 75.8 | Ladder Peak |
| 14 | 7,000 | 150.00 | 32.5 | Ladder Peak |
| 15 | 10,380 | 75.00 | 10.9 | Upper Marker |

Assay Class: High Sensitivity DNA Assay
 Data Path: C:\...ents and Settings\Bioanalyzer\2012-07-12\2012-07-12_002.xad

Created: 7/12/2012 10:09:31 AM
 Modified: 7/12/2012 10:58:21 AM

Electropherogram Summary Continued ...



Overall Results for sample 1 : IR50-1 BF-2

Number of peaks found: 10 Corr. Area 1: 814.2
 Noise: 0.2

Peak table for sample 1 : IR50-1 BF-2

| Peak | Size [bp] | Conc. [pg/μl] | Molarity [pmol/l] | Observations |
|------|-----------|---------------|-------------------|--------------|
| 1 | 29 | 0.00 | 0.0 | |
| 2 | 35 | 125.00 | 5,411.3 | Lower Marker |
| 3 | 47 | 165.23 | 5,298.9 | |
| 4 | 398 | 65.44 | 249.2 | |
| 5 | 430 | 623.26 | 2,195.3 | |
| 6 | 473 | 15.12 | 48.5 | |
| 7 | 485 | 23.55 | 73.5 | |
| 8 | 541 | 22.88 | 64.1 | |
| 9 | 550 | 31.71 | 87.4 | |
| 10 | 628 | 10.18 | 24.6 | |
| 11 | 712 | 4.23 | 9.0 | |
| 12 | 10,380 | 75.00 | 10.9 | Upper Marker |

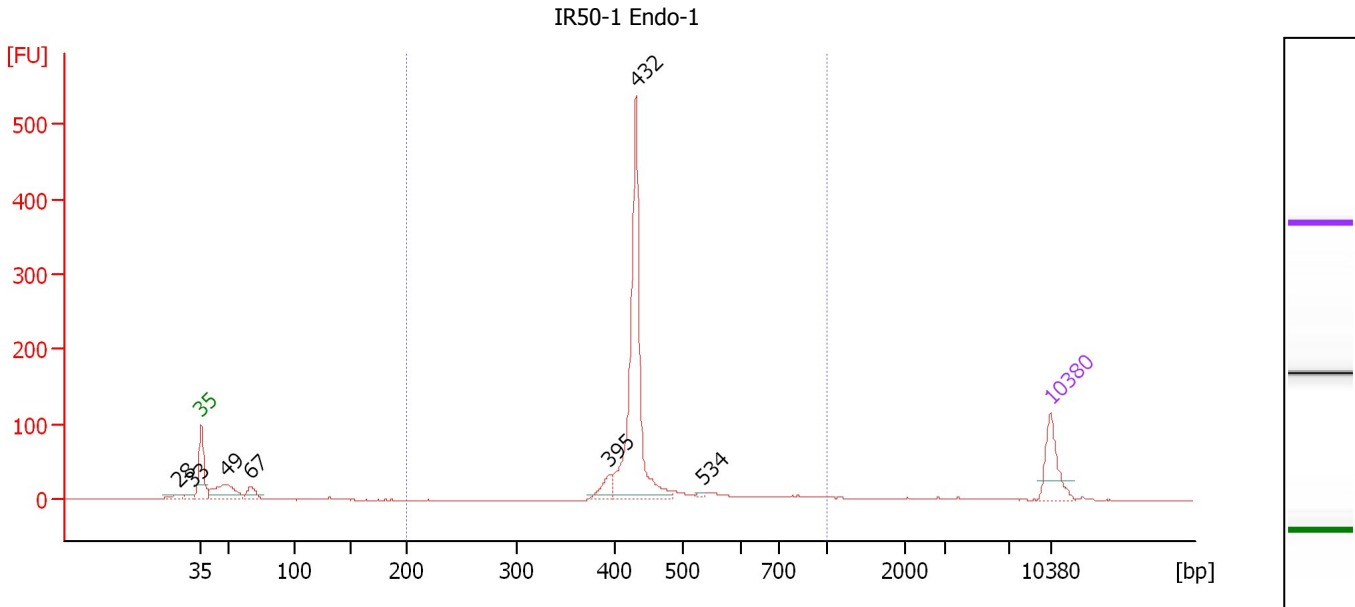
Region table for sample 1 : IR50-1 BF-2

| From [bp] | To [bp] | Average Size [bp] | Molarity [pmol/l] | Conc. [pg/μl] | Corr. Area | % of Total | Size distribution in CV [%] | Color |
|-----------|---------|-------------------|-------------------|---------------|------------|------------|-----------------------------|-------|
| 200 | 1,000 | 476 | 3,004.5 | 903.00 | 814.2 | 81 | 22.5 | Blue |

Assay Class: High Sensitivity DNA Assay
 Data Path: C:\...ents and Settings\Bioanalyzer\2012-07-12\2012-07-12_002.xad

Created: 7/12/2012 10:09:31 AM
 Modified: 7/12/2012 10:58:21 AM

Electropherogram Summary Continued ...



Overall Results for sample 2 : IR50-1 Endo-1

Number of peaks found: 7 Corr. Area 1: 790.7
 Noise: 0.3

Peak table for sample 2 : IR50-1 Endo-1

| Peak | Size [bp] | Conc. [pg/μl] | Molarity [pmol/l] | Observations |
|------|-----------|---------------|-------------------|--------------|
| 1 | 28 | 0.00 | 0.0 | |
| 2 | 33 | 0.00 | 0.0 | |
| 3 | 35 | 125.00 | 5,411.3 | Lower Marker |
| 4 | 49 | 132.68 | 4,130.5 | |
| 5 | 67 | 47.27 | 1,070.7 | |
| 6 | 395 | 39.84 | 152.7 | |
| 7 | 432 | 565.41 | 1,983.2 | |
| 8 | 534 | 4.73 | 13.4 | |
| 9 | 10,380 | 75.00 | 10.9 | Upper Marker |

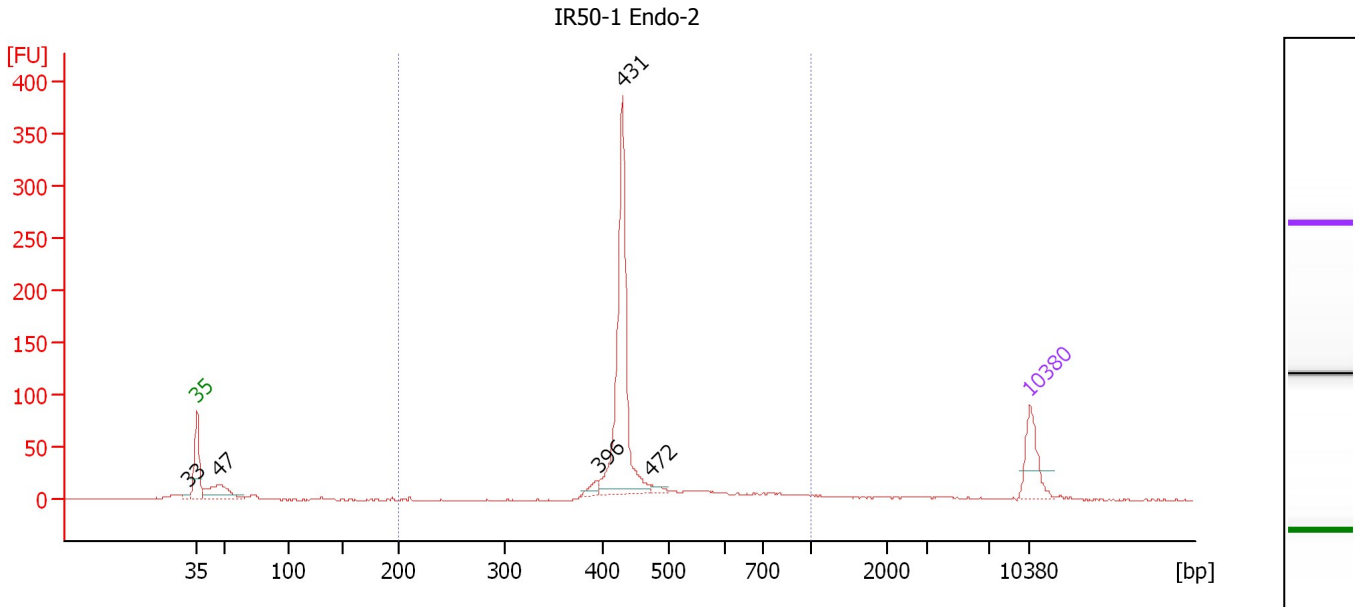
Region table for sample 2 : IR50-1 Endo-1

| From [bp] | To [bp] | Average Size [bp] | Molarity [pmol/l] | Conc. [pg/μl] | Corr. Area | % of Total | Size distribution in CV [%] | Color |
|-----------|---------|-------------------|-------------------|---------------|------------|------------|-----------------------------|-------|
| 200 | 1,000 | 456 | 2,397.7 | 701.23 | 790.7 | 77 | 19.4 | Blue |

Assay Class: High Sensitivity DNA Assay
 Data Path: C:\...ents and Settings\Bioanalyzer\2012-07-12\2012-07-12_002.xad

Created: 7/12/2012 10:09:31 AM
 Modified: 7/12/2012 10:58:21 AM

Electropherogram Summary Continued ...



Overall Results for sample 3 : IR50-1 Endo-2

Number of peaks found: 5 Corr. Area 1: 615.0
 Noise: 0.4

Peak table for sample 3 : IR50-1 Endo-2

| Peak | Size [bp] | Conc. [pg/μl] | Molarity [pmol/l] | Observations |
|------|-----------|---------------|-------------------|--------------|
| 1 | 33 | 0.00 | 0.0 | |
| 2 | 35 | 125.00 | 5,411.3 | Lower Marker |
| 3 | 47 | 121.95 | 3,943.2 | |
| 4 | 396 | 19.13 | 73.2 | |
| 5 | 431 | 499.11 | 1,755.9 | |
| 6 | 472 | 10.99 | 35.3 | |
| 7 | 10,380 | 75.00 | 10.9 | Upper Marker |

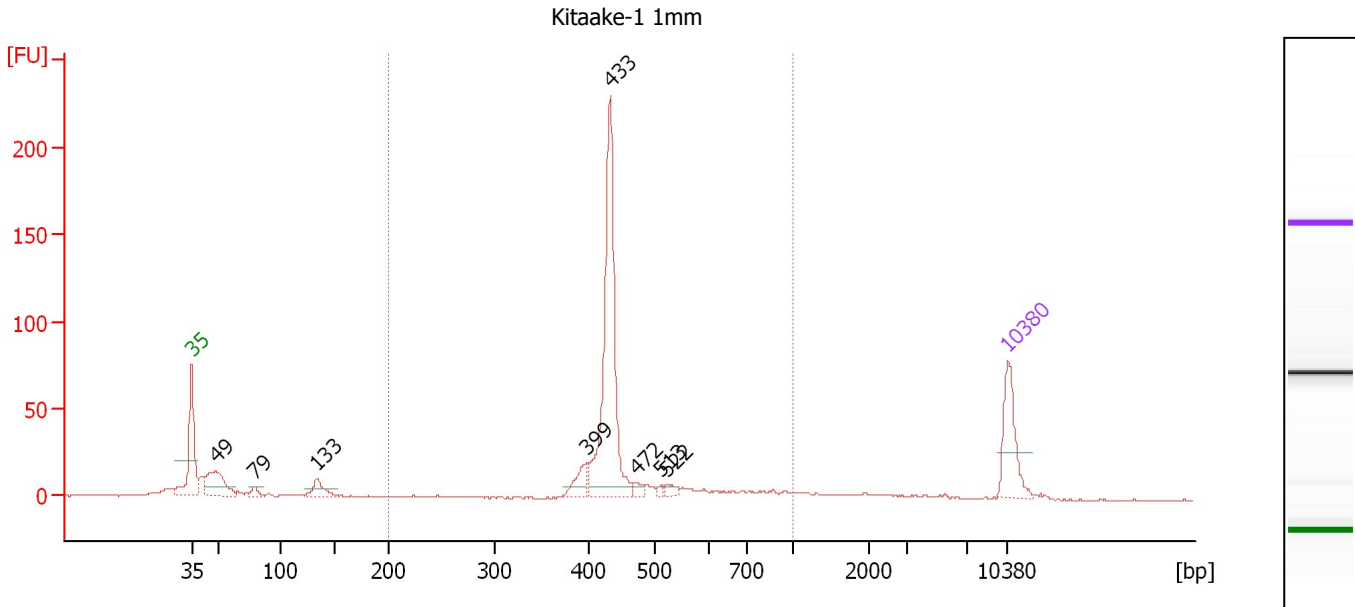
Region table for sample 3 : IR50-1 Endo-2

| From [bp] | To [bp] | Average Size [bp] | Molarity [pmol/l] | Conc. [pg/μl] | Corr. Area | % of Total | Size distribution in CV [%] | Color |
|-----------|---------|-------------------|-------------------|---------------|------------|------------|-----------------------------|-------|
| 200 | 1,000 | 467 | 2,338.8 | 692.89 | 615.0 | 78 | 21.4 | Blue |

Assay Class: High Sensitivity DNA Assay
 Data Path: C:\...ents and Settings\Bioanalyzer\2012-07-12\2012-07-12_002.xad

Created: 7/12/2012 10:09:31 AM
 Modified: 7/12/2012 10:58:21 AM

Electropherogram Summary Continued ...



Overall Results for sample 4 : Kitaake-1 1mm

Number of peaks found: 8 Corr. Area 1: 434.6
 Noise: 0.4

Peak table for sample 4 : Kitaake-1 1mm

| Peak | Size [bp] | Conc. [pg/μl] | Molarity [pmol/l] | Observations |
|------|-----------|---------------|-------------------|--------------|
| 1 | 35 | 125.00 | 5,411.3 | Lower Marker |
| 2 | 49 | 110.29 | 3,437.2 | |
| 3 | 79 | 15.61 | 299.3 | |
| 4 | 133 | 40.66 | 463.3 | |
| 5 | 399 | 36.55 | 138.9 | |
| 6 | 433 | 396.27 | 1,385.4 | |
| 7 | 472 | 12.13 | 38.9 | |
| 8 | 513 | 5.16 | 15.2 | |
| 9 | 522 | 11.26 | 32.7 | |
| 10 | 10,380 | 75.00 | 10.9 | Upper Marker |

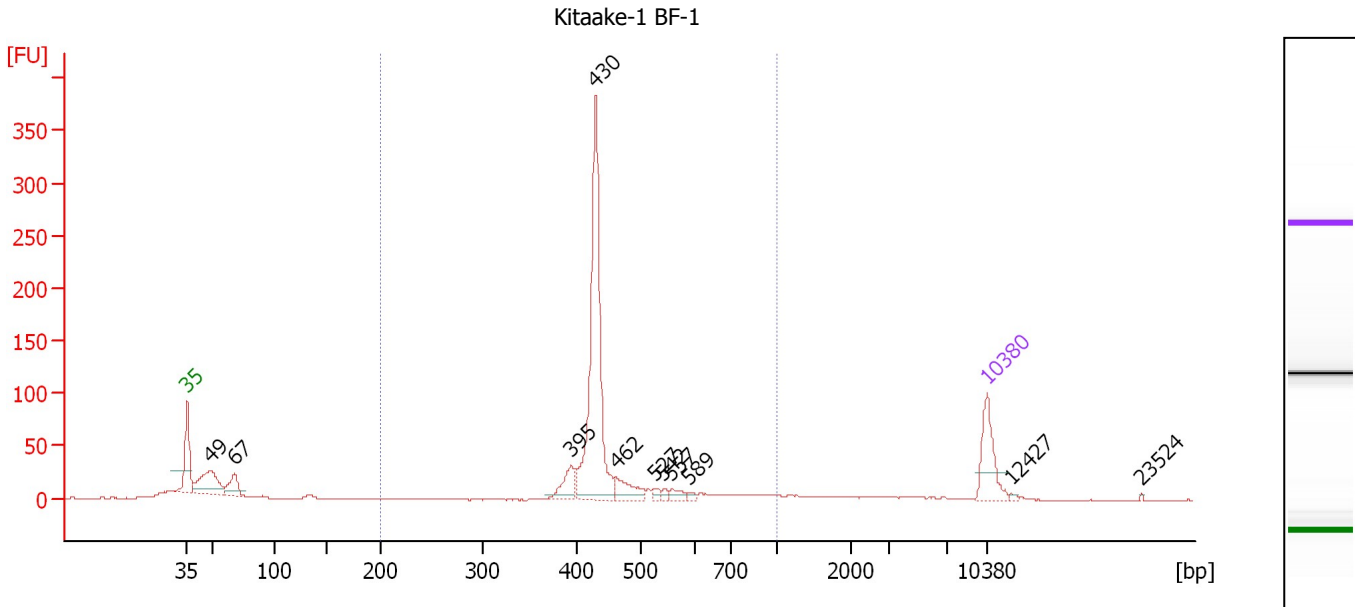
Region table for sample 4 : Kitaake-1 1mm

| From [bp] | To [bp] | Average Size [bp] | Molarity [pmol/l] | Conc. [pg/μl] | Corr. Area | % of Total | Size distribution in CV [%] | Color |
|-----------|---------|-------------------|-------------------|---------------|------------|------------|-----------------------------|-------|
| 200 | 1,000 | 466 | 1,853.8 | 547.78 | 434.6 | 72 | 21.8 | Blue |

Assay Class: High Sensitivity DNA Assay
 Data Path: C:\...ents and Settings\Bioanalyzer\2012-07-12\2012-07-12_002.xad

Created: 7/12/2012 10:09:31 AM
 Modified: 7/12/2012 10:58:21 AM

Electropherogram Summary Continued ...



Overall Results for sample 5 : Kitaake-1 BF-1

Number of peaks found: 11 Corr. Area 1: 647.1
 Noise: 0.3

Peak table for sample 5 : Kitaake-1 BF-1

| Peak | Size [bp] | Conc. [pg/μl] | Molarity [pmol/l] | Observations |
|------|-----------|---------------|-------------------|--------------|
| 1 | 35 | 125.00 | 5,411.3 | Lower Marker |
| 2 | 49 | 137.86 | 4,300.4 | |
| 3 | 67 | 58.03 | 1,303.3 | |
| 4 | 395 | 55.09 | 211.2 | |
| 5 | 430 | 482.07 | 1,698.6 | |
| 6 | 462 | 49.92 | 163.7 | |
| 7 | 527 | 8.84 | 25.4 | |
| 8 | 542 | 7.45 | 20.8 | |
| 9 | 557 | 15.12 | 41.1 | |
| 10 | 589 | 5.42 | 14.0 | |
| 11 | 10,380 | 75.00 | 10.9 | Upper Marker |
| 12 | 12,427 | 0.00 | 0.0 | |
| 13 | 23,524 | 0.00 | 0.0 | |

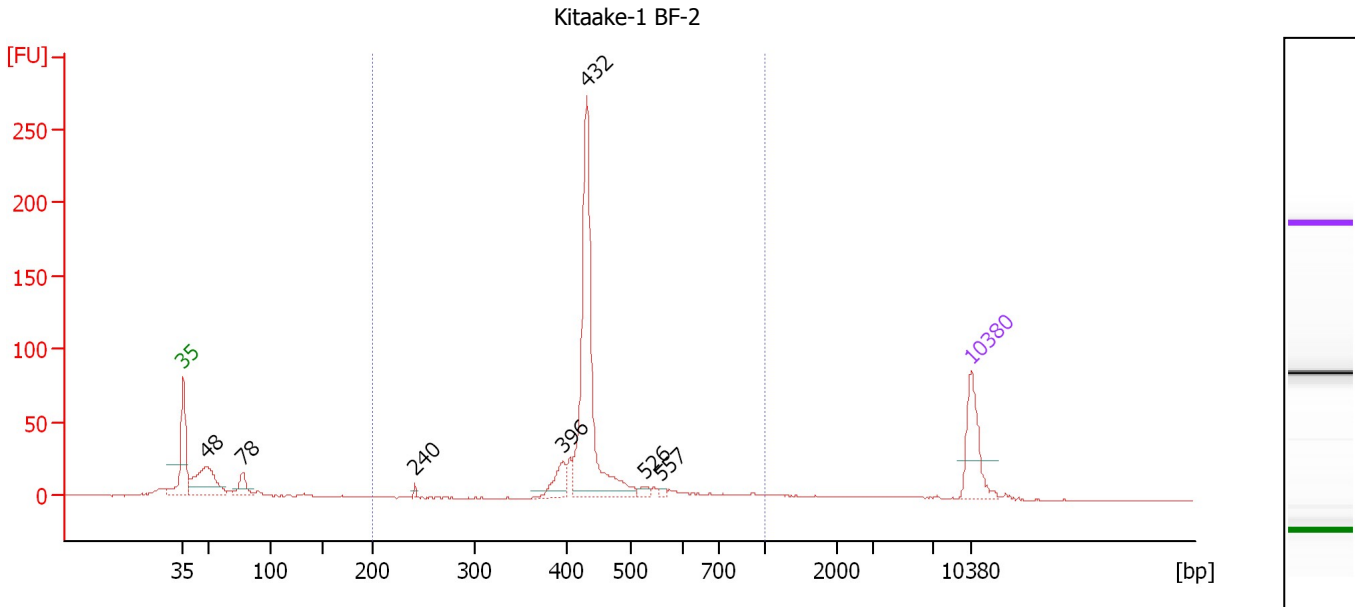
Region table for sample 5 : Kitaake-1 BF-1

| From [bp] | To [bp] | Average Size [bp] | Molarity [pmol/l] | Conc. [pg/μl] | Corr. Area | % of Total | Size distribution in CV [%] | Color |
|-----------|---------|-------------------|-------------------|---------------|------------|------------|-----------------------------|-------|
| 200 | 1,000 | 454 | 2,184.8 | 638.19 | 647.1 | 73 | 18.1 | Blue |

Assay Class: High Sensitivity DNA Assay
 Data Path: C:\...ents and Settings\Bioanalyzer\2012-07-12\2012-07-12_002.xad

Created: 7/12/2012 10:09:31 AM
 Modified: 7/12/2012 10:58:21 AM

Electropherogram Summary Continued ...



Overall Results for sample 6 : Kitaake-1 BF-2

Number of peaks found: 7 Corr. Area 1: 493.5
 Noise: 0.3

Peak table for sample 6 : Kitaake-1 BF-2

| Peak | Size [bp] | Conc. [pg/μl] | Molarity [pmol/l] | Observations |
|------|-----------|---------------|-------------------|--------------|
| 1 | 35 | 125.00 | 5,411.3 | Lower Marker |
| 2 | 48 | 156.27 | 4,916.5 | |
| 3 | 78 | 42.75 | 828.7 | |
| 4 | 240 | 4.76 | 30.0 | |
| 5 | 396 | 46.22 | 176.7 | |
| 6 | 432 | 416.69 | 1,460.5 | |
| 7 | 526 | 9.12 | 26.3 | |
| 8 | 557 | 4.81 | 13.1 | |
| 9 | 10,380 | 75.00 | 10.9 | Upper Marker |

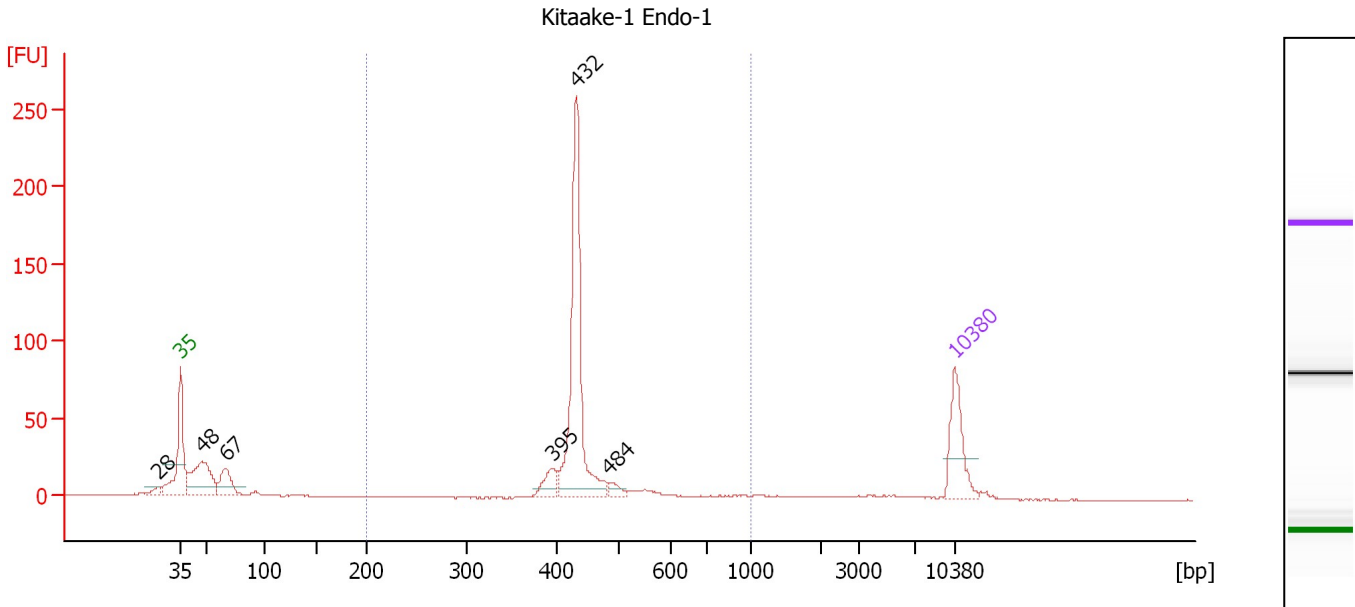
Region table for sample 6 : Kitaake-1 BF-2

| From [bp] | To [bp] | Average Size [bp] | Molarity [pmol/l] | Conc. [pg/μl] | Corr. Area | % of Total | Size distribution in CV [%] | Color |
|-----------|---------|-------------------|-------------------|---------------|------------|------------|-----------------------------|-------|
| 200 | 1,000 | 457 | 1,863.4 | 544.11 | 493.5 | 72 | 19.2 | Blue |

Assay Class: High Sensitivity DNA Assay
 Data Path: C:\...ents and Settings\Bioanalyzer\2012-07-12\2012-07-12_002.xad

Created: 7/12/2012 10:09:31 AM
 Modified: 7/12/2012 10:58:21 AM

Electropherogram Summary Continued ...



Overall Results for sample 7 : Kitaake-1 Endo-1

Number of peaks found: 6 Corr. Area 1: 418.1
 Noise: 0.2

Peak table for sample 7 : Kitaake-1 Endo-1

| Peak | Size [bp] | Conc. [pg/μl] | Molarity [pmol/l] | Observations |
|------|-----------|---------------|-------------------|--------------|
| 1 | 28 | 0.00 | 0.0 | |
| 2 | 35 | 125.00 | 5,411.3 | Lower Marker |
| 3 | 48 | 166.39 | 5,278.1 | |
| 4 | 67 | 73.00 | 1,650.8 | |
| 5 | 395 | 37.59 | 144.1 | |
| 6 | 432 | 371.20 | 1,301.5 | |
| 7 | 484 | 15.54 | 48.7 | |
| 8 | 10,380 | 75.00 | 10.9 | Upper Marker |

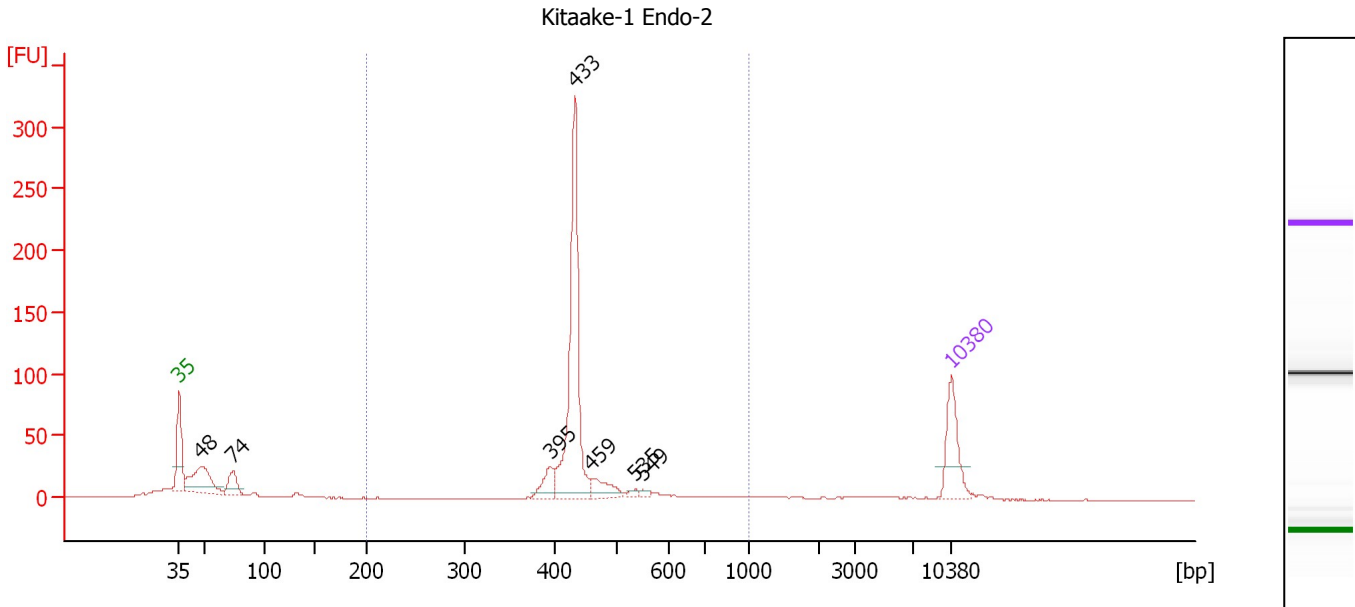
Region table for sample 7 : Kitaake-1 Endo-1

| From [bp] | To [bp] | Average Size [bp] | Molarity [pmol/l] | Conc. [pg/μl] | Corr. Area | % of Total | Size distribution in CV [%] | Color |
|-----------|---------|-------------------|-------------------|---------------|------------|------------|-----------------------------|-------|
| 200 | 1,000 | 446 | 1,584.7 | 458.92 | 418.1 | 67 | 15.0 | Blue |

Assay Class: High Sensitivity DNA Assay
 Data Path: C:\...ents and Settings\Bioanalyzer\2012-07-12\2012-07-12_002.xad

Created: 7/12/2012 10:09:31 AM
 Modified: 7/12/2012 10:58:21 AM

Electropherogram Summary Continued ...



Overall Results for sample 8 : Kitaake-1 Endo-2

Number of peaks found: 7 Corr. Area 1: 504.4
 Noise: 0.2

Peak table for sample 8 : Kitaake-1 Endo-2

| Peak | Size [bp] | Conc. [pg/μl] | Molarity [pmol/l] | Observations |
|------|-----------|---------------|-------------------|--------------|
| 1 | 35 | 125.00 | 5,411.3 | Lower Marker |
| 2 | 48 | 147.77 | 4,644.0 | |
| 3 | 74 | 53.45 | 1,098.9 | |
| 4 | 395 | 42.07 | 161.4 | |
| 5 | 433 | 378.51 | 1,324.1 | |
| 6 | 459 | 41.86 | 138.2 | |
| 7 | 535 | 7.48 | 21.2 | |
| 8 | 549 | 6.90 | 19.1 | |
| 9 | 10,380 | 75.00 | 10.9 | Upper Marker |

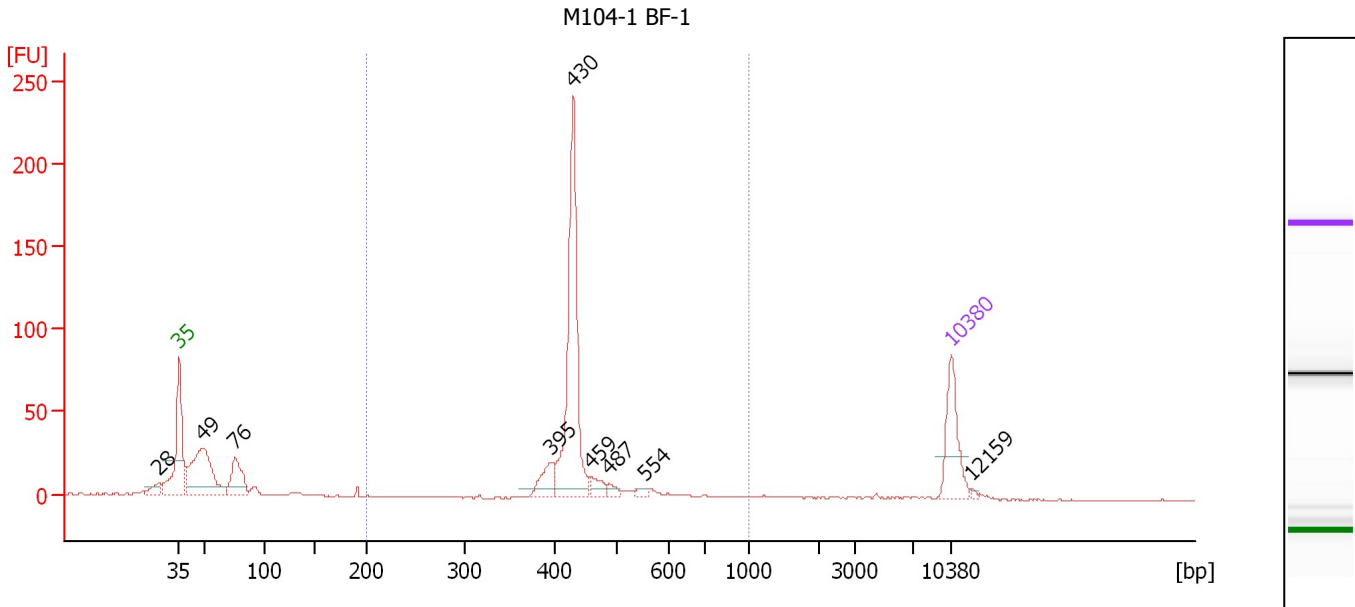
Region table for sample 8 : Kitaake-1 Endo-2

| From [bp] | To [bp] | Average Size [bp] | Molarity [pmol/l] | Conc. [pg/μl] | Corr. Area | % of Total | Size distribution in CV [%] | Color |
|-----------|---------|-------------------|-------------------|---------------|------------|------------|-----------------------------|-------|
| 200 | 1,000 | 449 | 1,745.8 | 507.31 | 504.4 | 65 | 15.8 | Blue |

Assay Class: High Sensitivity DNA Assay
 Data Path: C:\...ents and Settings\Bioanalyzer\2012-07-12\2012-07-12_002.xad

Created: 7/12/2012 10:09:31 AM
 Modified: 7/12/2012 10:58:21 AM

Electropherogram Summary Continued ...



Overall Results for sample 9 : M104-1 BF-1

Number of peaks found: 9 Corr. Area 1: 398.9
 Noise: 0.2

Peak table for sample 9 : M104-1 BF-1

| Peak | Size [bp] | Conc. [pg/μl] | Molarity [pmol/l] | Observations |
|------|-----------|---------------|-------------------|--------------|
| 1 | 28 | 0.00 | 0.0 | |
| 2 | 35 | 125.00 | 5,411.3 | Lower Marker |
| 3 | 49 | 234.63 | 7,251.9 | |
| 4 | 76 | 88.22 | 1,768.0 | |
| 5 | 395 | 45.63 | 175.0 | |
| 6 | 430 | 342.42 | 1,205.8 | |
| 7 | 459 | 20.37 | 67.3 | |
| 8 | 487 | 12.80 | 39.9 | |
| 9 | 554 | 7.32 | 20.0 | |
| 10 | 10,380 | 75.00 | 10.9 | Upper Marker |
| 11 | 12,159 | 0.00 | 0.0 | |

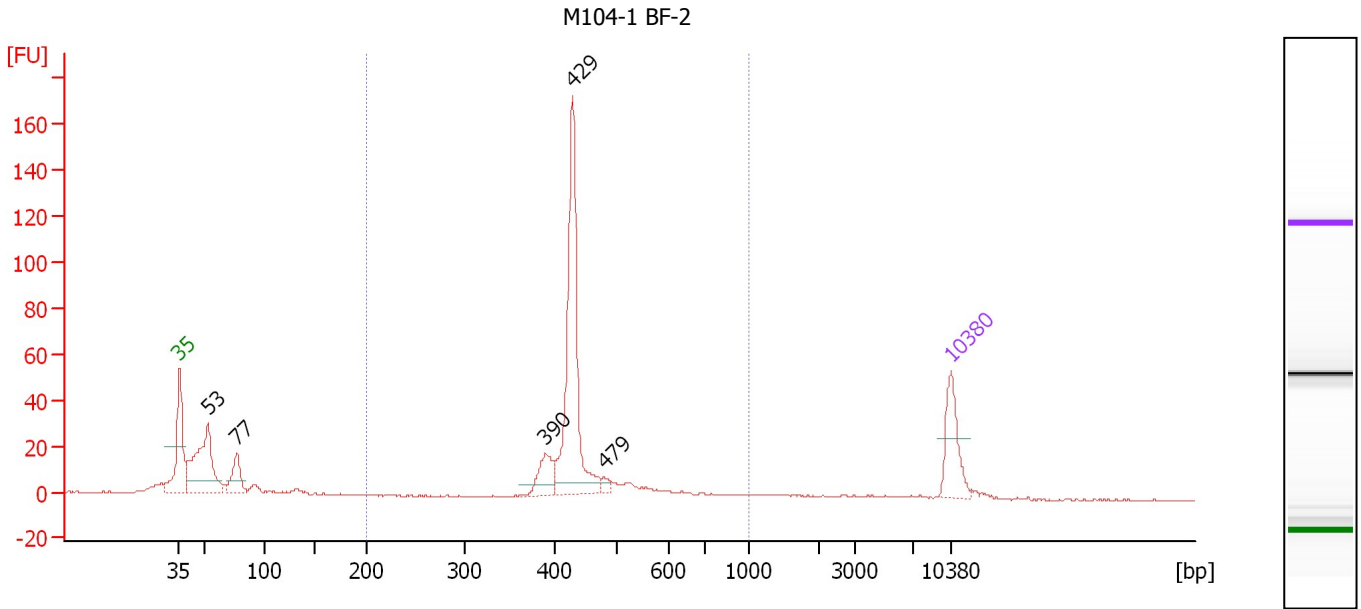
Region table for sample 9 : M104-1 BF-1

| From [bp] | To [bp] | Average Size [bp] | Molarity [pmol/l] | Conc. [pg/μl] | Corr. Area | % of Total | Size distribution in CV [%] | Color |
|-----------|---------|-------------------|-------------------|---------------|------------|------------|-----------------------------|-------|
| 200 | 1,000 | 442 | 1,583.9 | 455.66 | 398.9 | 60 | 13.2 | Blue |

Assay Class: High Sensitivity DNA Assay
 Data Path: C:\...ents and Settings\Bioanalyzer\2012-07-12\2012-07-12_002.xad

Created: 7/12/2012 10:09:31 AM
 Modified: 7/12/2012 10:58:21 AM

Electropherogram Summary Continued ...



Overall Results for sample 10 : M104-1 BF-2

Number of peaks found: 5 Corr. Area 1: 313.5
 Noise: 0.2

Peak table for sample 10 : M104-1 BF-2

| Peak | Size [bp] | Conc. [pg/μl] | Molarity [pmol/l] | Observations |
|------|-----------|---------------|-------------------|--------------|
| 1 | 35 | 125.00 | 5,411.3 | Lower Marker |
| 2 | 53 | 279.80 | 7,991.7 | |
| 3 | 77 | 75.62 | 1,485.6 | |
| 4 | 390 | 61.36 | 238.4 | |
| 5 | 429 | 399.89 | 1,413.3 | |
| 6 | 479 | 10.92 | 34.6 | |
| 7 | 10,380 | 75.00 | 10.9 | Upper Marker |

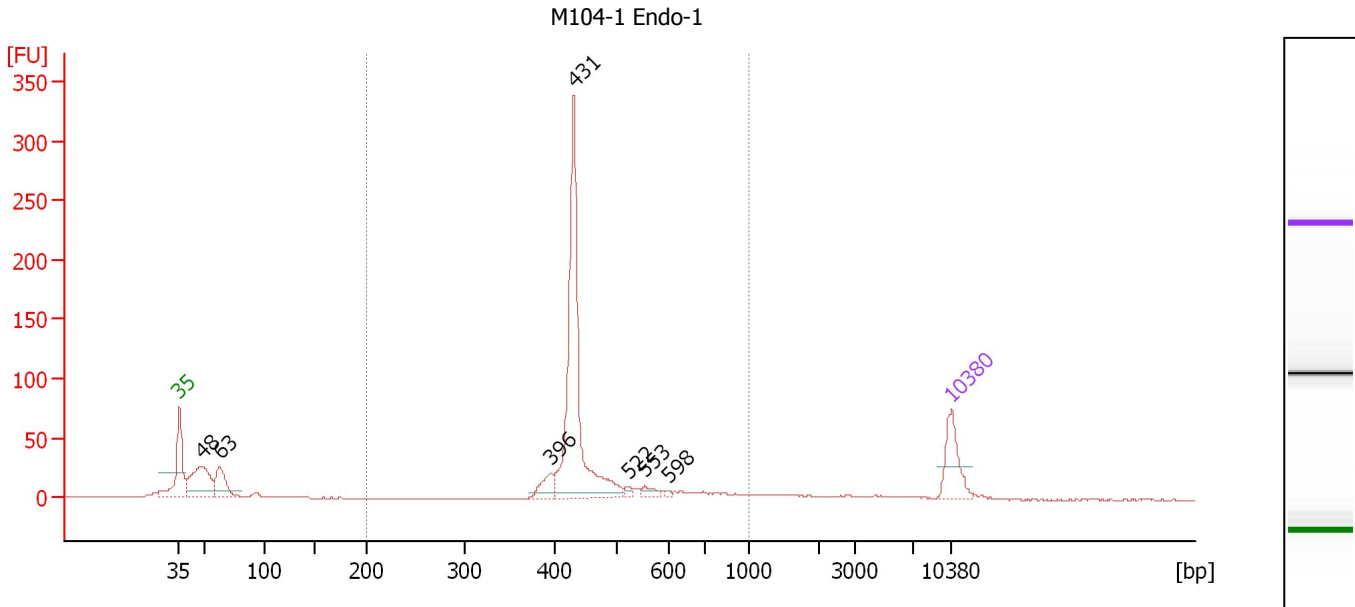
Region table for sample 10 : M104-1 BF-2

| From [bp] | To [bp] | Average Size [bp] | Molarity [pmol/l] | Conc. [pg/μl] | Corr. Area | % of Total | Size distribution in CV [%] | Color |
|-----------|---------|-------------------|-------------------|---------------|------------|------------|-----------------------------|-------|
| 200 | 1,000 | 447 | 1,871.1 | 540.47 | 313.5 | 61 | 15.7 | Blue |

Assay Class: High Sensitivity DNA Assay
 Data Path: C:\...ents and Settings\Bioanalyzer\2012-07-12\2012-07-12_002.xad

Created: 7/12/2012 10:09:31 AM
 Modified: 7/12/2012 10:58:21 AM

Electropherogram Summary Continued ...



Overall Results for sample 11 : M104-1 Endo-1

Number of peaks found: 7 Corr. Area 1: 593.4
 Noise: 0.2

Peak table for sample 11 : M104-1 Endo-1

| Peak | Size [bp] | Conc. [pg/μl] | Molarity [pmol/l] | Observations |
|------|-----------|---------------|-------------------|--------------|
| 1 | 35 | 125.00 | 5,411.3 | Lower Marker |
| 2 | 48 | 199.90 | 6,256.4 | |
| 3 | 63 | 100.48 | 2,423.7 | |
| 4 | 396 | 43.60 | 167.0 | |
| 5 | 431 | 566.02 | 1,989.4 | |
| 6 | 522 | 9.87 | 28.6 | |
| 7 | 553 | 17.69 | 48.4 | |
| 8 | 598 | 4.16 | 10.6 | |
| 9 | 10,380 | 75.00 | 10.9 | Upper Marker |

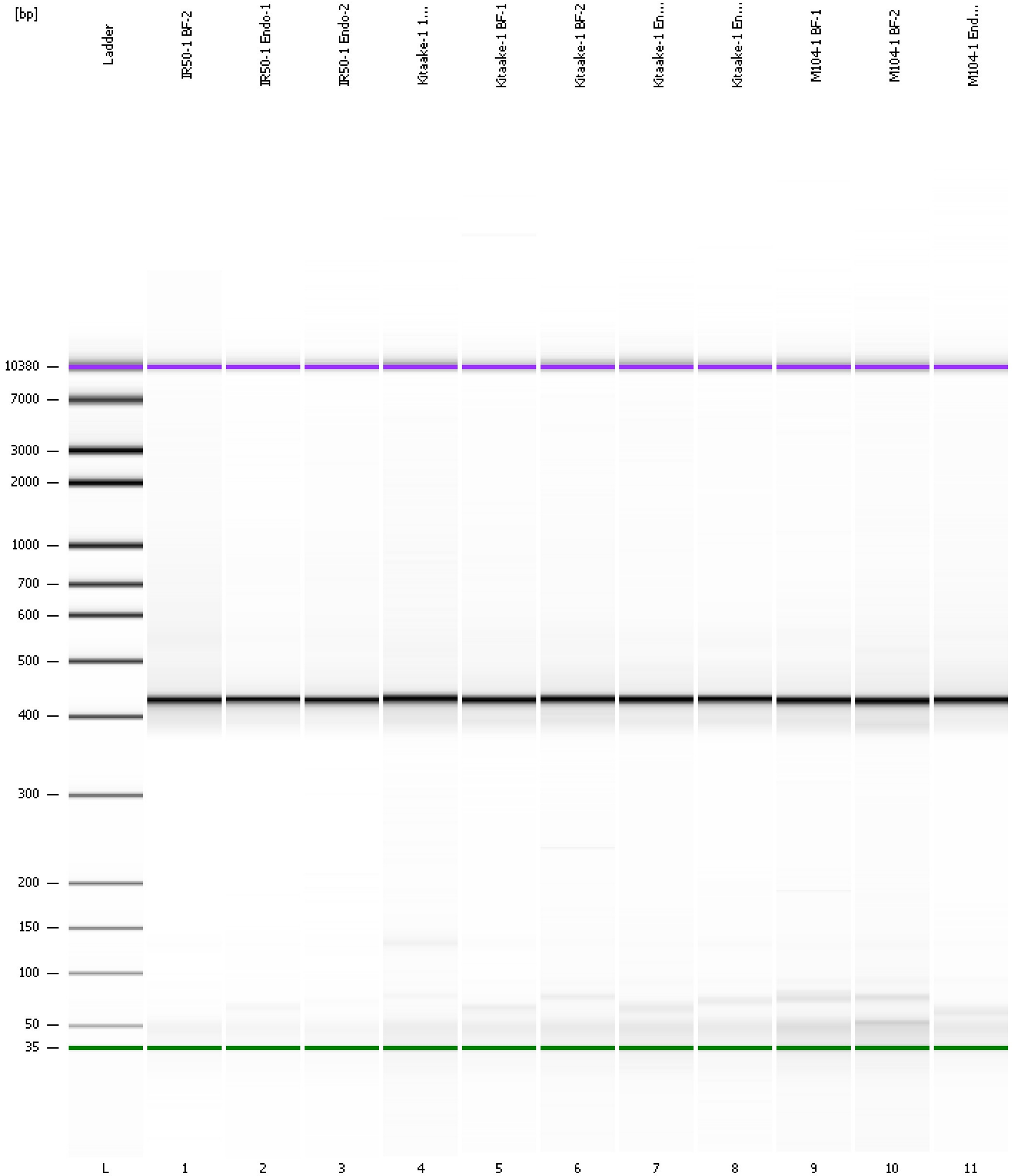
Region table for sample 11 : M104-1 Endo-1

| From [bp] | To [bp] | Average Size [bp] | Molarity [pmol/l] | Conc. [pg/μl] | Corr. Area | % of Total | Size distribution in CV [%] | Color |
|-----------|---------|-------------------|-------------------|---------------|------------|------------|-----------------------------|-------|
| 200 | 1,000 | 467 | 2,413.0 | 717.28 | 593.4 | 68 | 20.7 | Blue |

Assay Class: High Sensitivity DNA Assay
Data Path: C:\...ents and Settings\Bioanalyzer\2012-07-12\2012-07-12_002.xad

Created: 7/12/2012 10:09:31 AM
Modified: 7/12/2012 10:58:21 AM

Gel Image



Assay Class: High Sensitivity DNA Assay
 Data Path: C:\...ents and Settings\Bioanalyzer\2012-07-12\2012-07-12_002.xad

Created: 7/12/2012 10:09:31 AM
 Modified: 7/12/2012 10:58:21 AM

Run Logbook

| Description | Number | Source | Category | Sub Category | Time | Time Zone | User | Host |
|---|--------|------------|----------|--------------|-----------------------|-------------------------------------|----------|----------|
| Run ended on port 1 (Number of wells acquired: 12) | | Instrument | Run | | 7/12/2012 10:50:49 AM | (GMT --07:00) Pacific Standard Time | UC Davis | D8XSMGH1 |
| Run started on port 1 (File: C:\Documents and Settings\Bioanalyzer\2012-07-12\2012-07-12_002.xad) | | Instrument | Run | | 7/12/2012 10:09:36 AM | (GMT --07:00) Pacific Standard Time | UC Davis | D8XSMGH1 |
| Product Number : G2938B | | Instrument | Run | | 7/12/2012 10:09:36 AM | (GMT --07:00) Pacific Standard Time | UC Davis | D8XSMGH1 |
| Name : | | Instrument | Run | | 7/12/2012 10:09:36 AM | (GMT --07:00) Pacific Standard Time | UC Davis | D8XSMGH1 |
| Vendor : Agilent Technologies | | Instrument | Run | | 7/12/2012 10:09:36 AM | (GMT --07:00) Pacific Standard Time | UC Davis | D8XSMGH1 |
| Serial# : DE13701086 | | Instrument | Run | | 7/12/2012 10:09:36 AM | (GMT --07:00) Pacific Standard Time | UC Davis | D8XSMGH1 |
| Firmware : C.01.069 | | Instrument | Run | | 7/12/2012 10:09:36 AM | (GMT --07:00) Pacific Standard Time | UC Davis | D8XSMGH1 |
| Cartridge : Electrode | | Instrument | Run | | 7/12/2012 10:09:36 AM | (GMT --07:00) Pacific Standard Time | UC Davis | D8XSMGH1 |