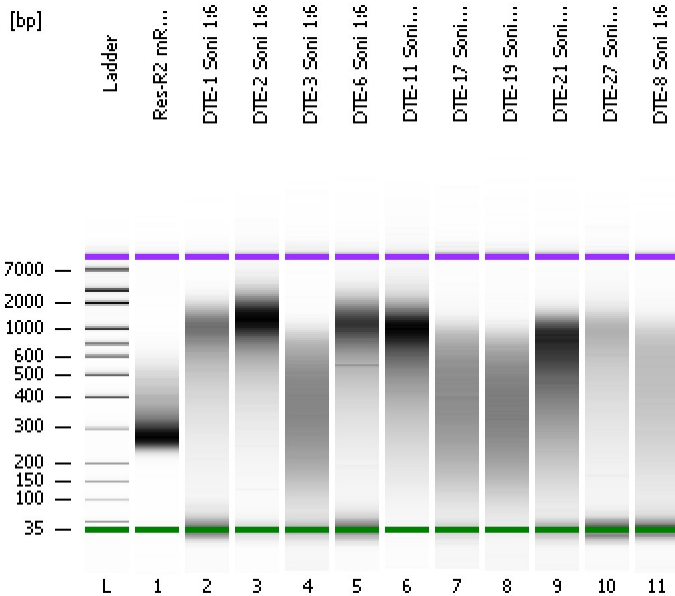


Assay Class: High Sensitivity DNA Assay
Data Path: C:\...ents and Settings\Bioanalyzer\2012-11-08\2012-11-08_002.xad

Created: 11/8/2012 1:56:14 PM
Modified: 11/8/2012 2:42:09 PM

Electrophoresis File Run Summary



Instrument Information:

Instrument Name: DE13701086 Firmware: C.01.069
Serial#: DE13701086 Type: G2938B

Assay Information:

Assay Origin Path: C:\Program Files\Agilent\2100 bioanalyzer\2100 expert\assays\dsDNA\High Sensitivity DNA.xsy
Assay Class: High Sensitivity DNA Assay
Version: 1.03
Assay Comments: Copyright © 2003-2010 Agilent Technologies

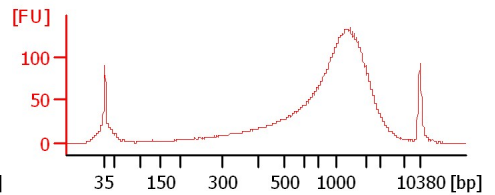
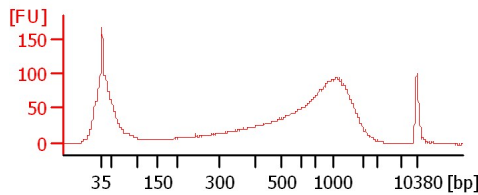
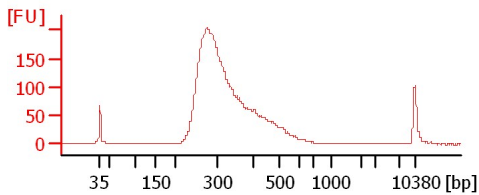
Chip Information:

Chip Lot #:
Reagent Kit Lot #:
Chip Comments:

Res-R2 mRNA Lib

DTE-1 Soni 1:6

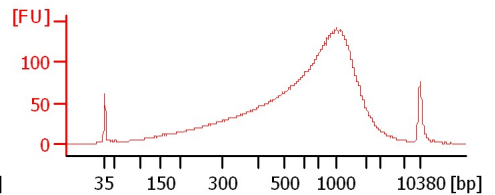
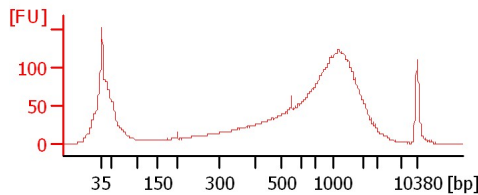
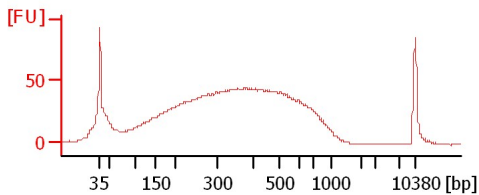
DTE-2 Soni 1:6



DTE-3 Soni 1:6

DTE-6 Soni 1:6

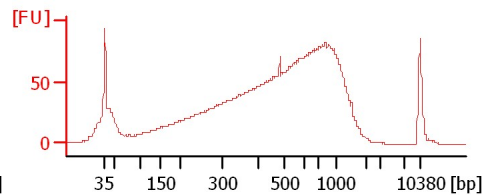
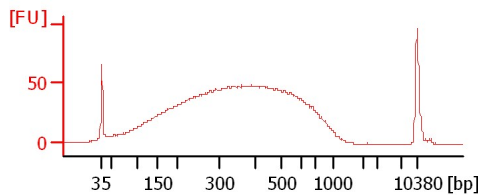
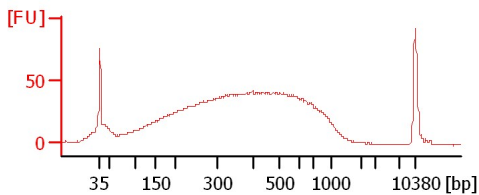
DTE-11 Soni 1:6



DTE-17 Soni 1:6

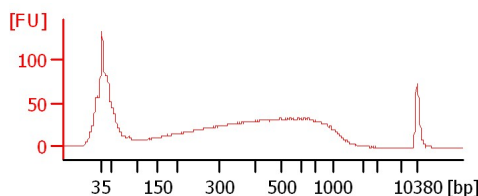
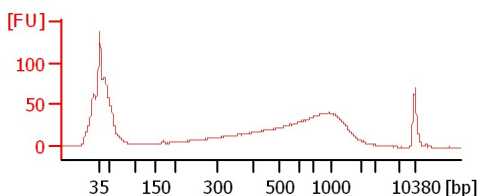
DTE-19 Soni 1:6

DTE-21 Soni 1:6



DTE-27 Soni 1:4

DTE-8 Soni 1:6



Assay Class: High Sensitivity DNA Assay
Data Path: C:\...ents and Settings\Bioanalyzer\2012-11-08\2012-11-08_002.xad

Created: 11/8/2012 1:56:14 PM
Modified: 11/8/2012 2:42:09 PM

Electrophoresis File Run Summary (Chip Summary)

Sample Name	Sample Comment	Rest. Digest	Status	Observation	Result Label	Result Color
Res-R2 mRNA Lib		<input type="checkbox"/>	✓			
DTE-1 Soni 1:6		<input type="checkbox"/>	✓			
DTE-2 Soni 1:6		<input type="checkbox"/>	✓			
DTE-3 Soni 1:6		<input type="checkbox"/>	✓			
DTE-6 Soni 1:6		<input type="checkbox"/>	✓			
DTE-11 Soni 1:6		<input type="checkbox"/>	✓			
DTE-17 Soni 1:6		<input type="checkbox"/>	✓			
DTE-19 Soni 1:6		<input type="checkbox"/>	✓			
DTE-21 Soni 1:6		<input type="checkbox"/>	✓			
DTE-27 Soni 1:4		<input type="checkbox"/>	✓			
DTE-8 Soni 1:6		<input type="checkbox"/>	✓			
Ladder		<input type="checkbox"/>	✓			

Chip Lot #

Reagent Kit Lot #

Chip Comments :

Assay Class: High Sensitivity DNA Assay
Data Path: C:\...ents and Settings\Bioanalyzer\2012-11-08\2012-11-08_002.xad

Created: 11/8/2012 1:56:14 PM
Modified: 11/8/2012 2:42:09 PM

Electrophoresis Assay Details

General Analysis Settings

Number of Available Sample and Ladder Wells (Max.) : 12
Minimum Visible Range [s] : 32
Maximum Visible Range [s] : 138
Start Analysis Time Range [s] : 33
End Analysis Time Range [s] : 137.5
Ladder Concentration [pg/ μ l] : 1950
Uses Standard Area for Ladder Fragments
Lower Marker Concentration [pg/ μ l] : 125
Upper Marker Concentration [pg/ μ l] : 75
Used Upper Marker for Quantitation
Standard Curve Fit is Point to Point
Show Data Aligned to Lower and Upper Marker

Integrator Settings

Integration Start Time [s] : 33.05
Integration End Time [s] : 137
Slope Threshold : 0.8
Height Threshold [FU] : 5
Area Threshold : 0.1
Width Threshold [s] : 0.6
Baseline Plateau [s] : 0.5

Filter Settings

Filter Width [s] : 0.5
Polynomial Order : 4

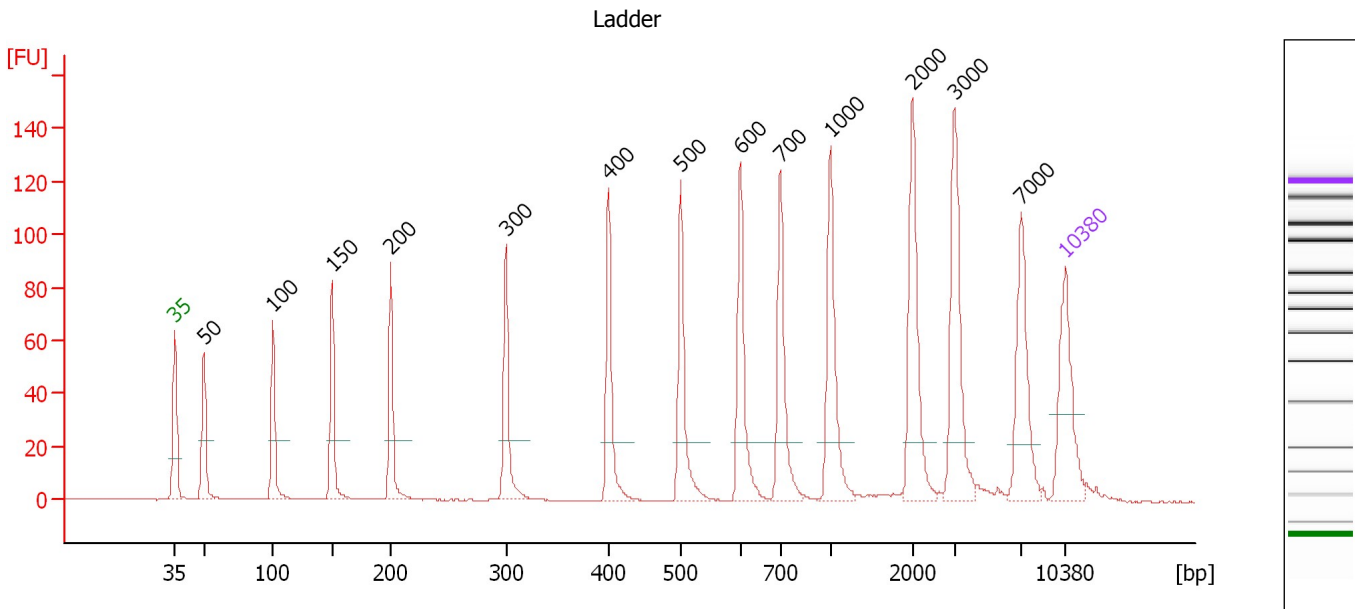
Ladder

Ladder Peak	Size	Area
1	35	160
2	50	210
3	100	208
4	150	221
5	200	242
6	300	270
7	400	305
8	500	306
9	600	336
10	700	321
11	1000	366
12	2000	413
13	3000	411
14	7000	400
15	10380	214

Assay Class: High Sensitivity DNA Assay
 Data Path: C:\...ents and Settings\Bioanalyzer\2012-11-08\2012-11-08_002.xad

Created: 11/8/2012 1:56:14 PM
 Modified: 11/8/2012 2:42:09 PM

Electropherogram Summary



Overall Results for Ladder

Noise: 0.2

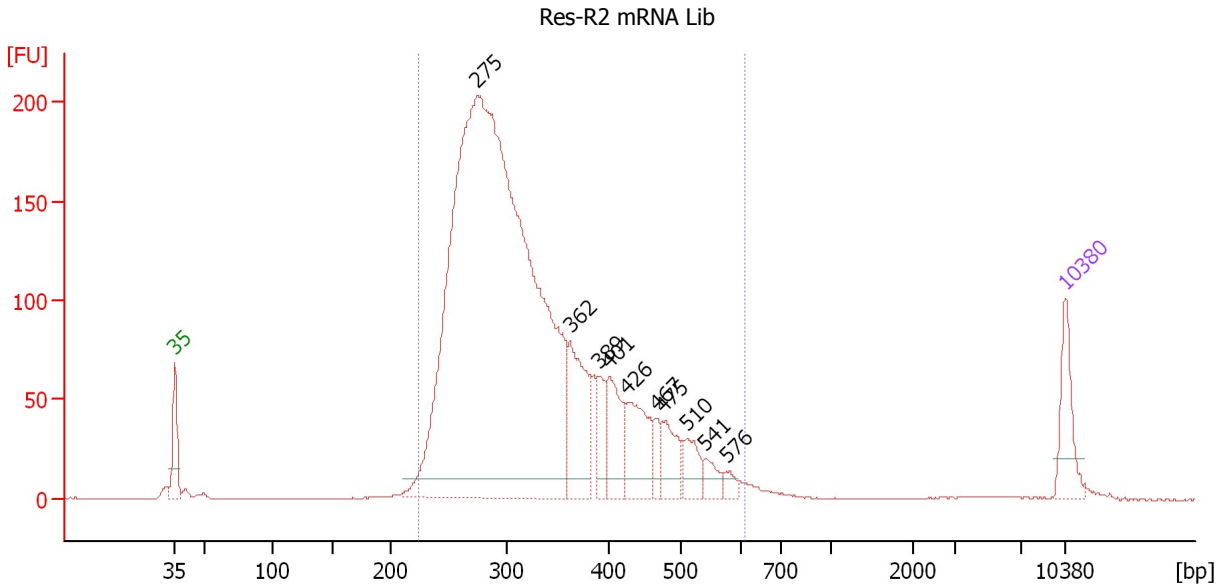
Peak table for Ladder

Peak	Size [bp]	Conc. [pg/µl]	Molarity [pmol/l]	Observations
1	35	125.00	5,411.3	Lower Marker
2	50	150.00	4,545.5	Ladder Peak
3	100	150.00	2,272.7	Ladder Peak
4	150	150.00	1,515.2	Ladder Peak
5	200	150.00	1,136.4	Ladder Peak
6	300	150.00	757.6	Ladder Peak
7	400	150.00	568.2	Ladder Peak
8	500	150.00	454.5	Ladder Peak
9	600	150.00	378.8	Ladder Peak
10	700	150.00	324.7	Ladder Peak
11	1,000	150.00	227.3	Ladder Peak
12	2,000	150.00	113.6	Ladder Peak
13	3,000	150.00	75.8	Ladder Peak
14	7,000	150.00	32.5	Ladder Peak
15	10,380	75.00	10.9	Upper Marker

Assay Class: High Sensitivity DNA Assay
 Data Path: C:\...ents and Settings\Bioanalyzer\2012-11-08\2012-11-08_002.xad

Created: 11/8/2012 1:56:14 PM
 Modified: 11/8/2012 2:42:09 PM

Electropherogram Summary Continued ...



Setpoint Deviations for sample 1 : Res-R2 mRNA Lib

Height Threshold [FU] : 10

Overall Results for sample 1 : Res-R2 mRNA Lib

Number of peaks found: 10 Corr. Area 1: 3,077.4
 Noise: 0.2

Peak table for sample 1 : Res-R2 mRNA Lib

Peak	Size [bp]	Conc. [pg/μl]	Molarity [pmol/l]	Observations
1	35	125.00	5,411.3	Lower Marker
2	275	3,142.25	17,303.8	
3	362	209.67	877.4	
4	389	68.52	266.6	
5	401	124.75	471.8	
6	426	150.58	535.9	
7	467	33.47	108.7	
8	475	77.37	246.7	
9	510	58.72	174.5	
10	541	33.86	94.8	
11	576	19.00	50.0	
12	10,380	75.00	10.9	Upper Marker

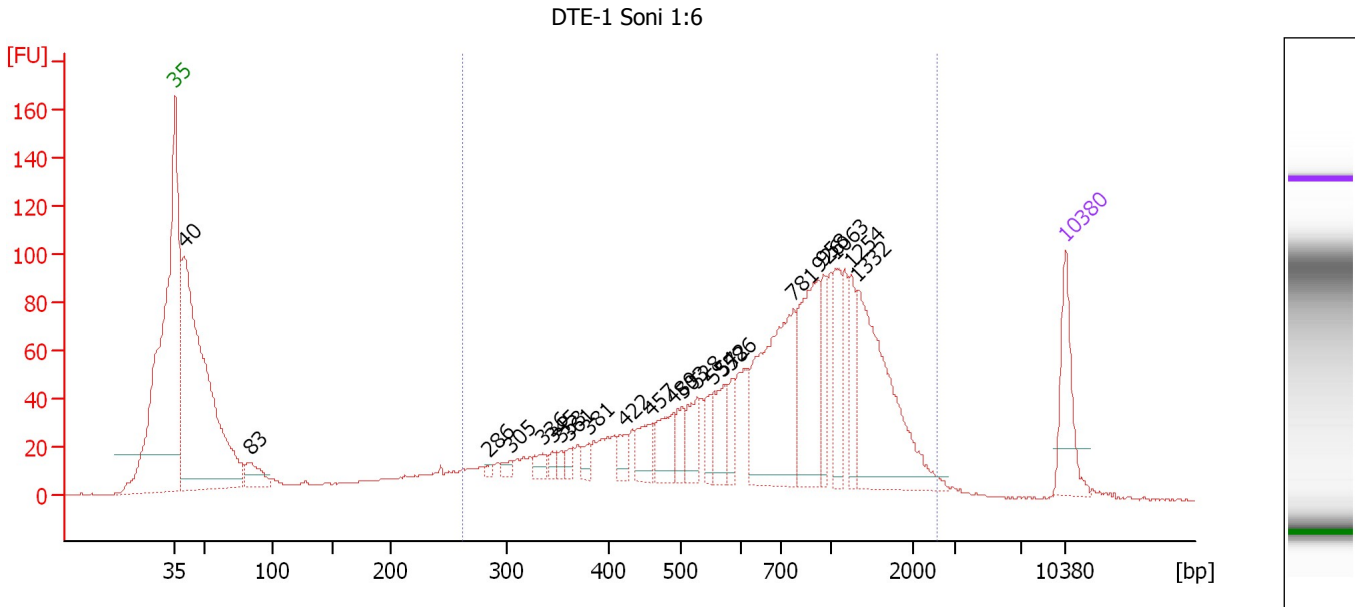
Region table for sample 1 : Res-R2 mRNA Lib

From [bp]	To [bp]	Average Size [bp]	Molarity [pmol/l]	Conc. [pg/μl]	Corr. Area	% of Total	Size distribution in CV [%]	Color
225	610	331	18,958.7	3,883.96	3,077.4	97	23.2	Blue

Assay Class: High Sensitivity DNA Assay
 Data Path: C:\...ents and Settings\Bioanalyzer\2012-11-08\2012-11-08_002.xad

Created: 11/8/2012 1:56:14 PM
 Modified: 11/8/2012 2:42:09 PM

Electropherogram Summary Continued ...



Overall Results for sample 2 : DTE-1 Soni 1:6

Number of peaks found: 23 Corr. Area 1: 1,833.4
 Noise: 0.3

Peak table for sample 2 : DTE-1 Soni 1:6

Peak	Size [bp]	Conc. [pg/μl]	Molarity [pmol/l]	Observations
1	35	125.00	5,411.3	Lower Marker
2	40	941.25	35,822.8	
3	83	53.10	966.4	
4	286	5.73	30.3	
5	305	10.63	52.9	
6	336	19.54	88.2	
7	345	11.17	49.0	
8	353	11.67	50.1	
9	361	13.51	56.6	
10	381	18.08	72.0	
11	422	25.31	91.0	
12	457	46.71	154.8	
13	489	58.33	180.6	
14	503	35.56	107.1	
15	528	49.92	143.2	
16	554	35.41	96.8	
17	572	53.42	141.5	
18	586	32.22	83.4	
19	781	272.22	528.4	
20	926	161.03	263.3	
21	958	55.50	87.8	
22	1,063	72.53	103.4	
23	1,254	50.94	61.5	
24	1,332	256.37	291.6	
25	10,380	75.00	10.9	Upper Marker

Assay Class: High Sensitivity DNA Assay
Data Path: C:\...ents and Settings\Bioanalyzer\2012-11-08\2012-11-08_002.xad

Created: 11/8/2012 1:56:14 PM
Modified: 11/8/2012 2:42:09 PM

Electropherogram Summary Continued ...

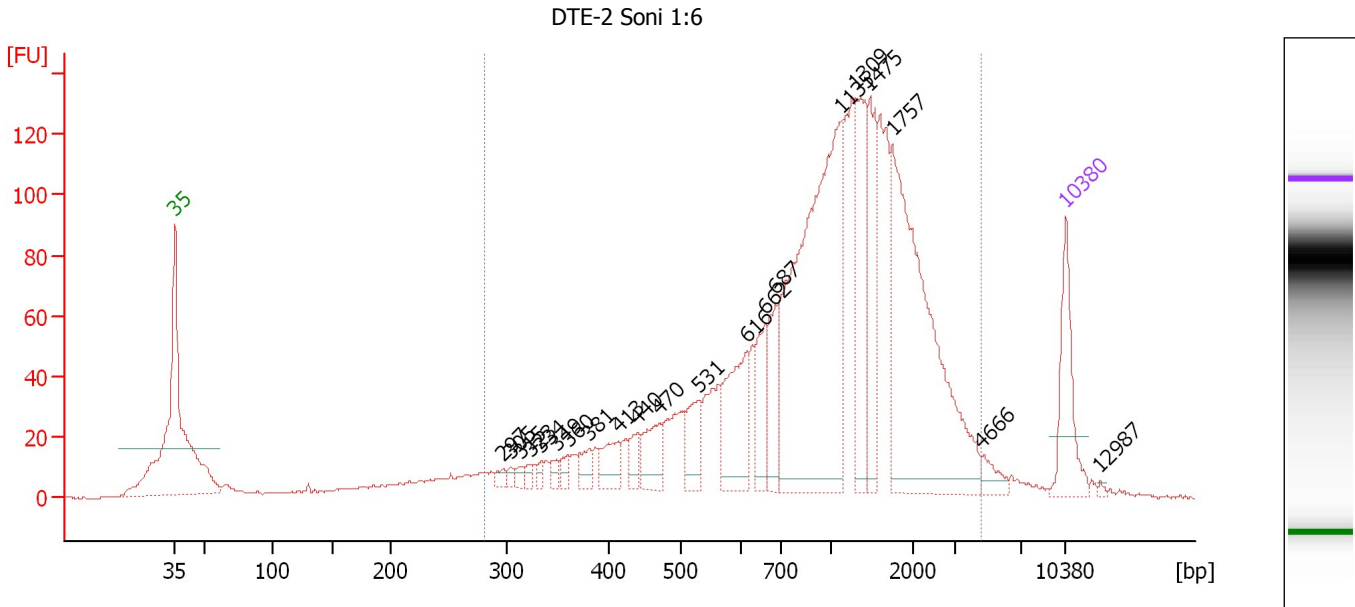
... Region table for sample 2 : DTE-1 Soni 1:6

From [bp]	To [bp]	Average Size [bp]	Molarity [pmol/l]	Conc. [pg/μl]	Corr. Area	% of Total	Size distribution in CV [%]	Color
262	2,609	863	4,892.9	1,938.87	1,833.4	69	53.5	■

Assay Class: High Sensitivity DNA Assay
 Data Path: C:\...ents and Settings\Bioanalyzer\2012-11-08\2012-11-08_002.xad

Created: 11/8/2012 1:56:14 PM
 Modified: 11/8/2012 2:42:09 PM

Electropherogram Summary Continued ...



Overall Results for sample 3 : DTE-2 Soni 1:6

Number of peaks found: 21 Corr. Area 1: 2,173.7
 Noise: 0.1

Peak table for sample 3 : DTE-2 Soni 1:6

Peak	Size [bp]	Conc. [pg/μl]	Molarity [pmol/l]	Observations
1	35	125.00	5,411.3	Lower Marker
2	297	10.46	53.3	
3	305	8.04	40.0	
4	315	9.02	43.4	
5	323	9.19	43.0	
6	334	9.98	45.2	
7	349	12.25	53.1	
8	360	13.42	56.5	
9	381	23.16	92.1	
10	413	39.67	145.5	
11	440	25.60	88.1	
12	470	54.45	175.6	
13	531	52.87	150.8	
14	616	113.22	278.4	
15	662	65.76	150.5	
16	687	67.05	147.9	
17	1,135	518.13	691.6	
18	1,309	129.11	149.5	
19	1,475	109.78	112.7	
20	1,757	397.03	342.3	
21	4,666	17.14	5.6	
22	10,380	75.00	10.9	Upper Marker
23	12,987	0.00	0.0	

Assay Class: High Sensitivity DNA Assay
Data Path: C:\...ents and Settings\Bioanalyzer\2012-11-08\2012-11-08_002.xad

Created: 11/8/2012 1:56:14 PM
Modified: 11/8/2012 2:42:09 PM

Electropherogram Summary Continued ...

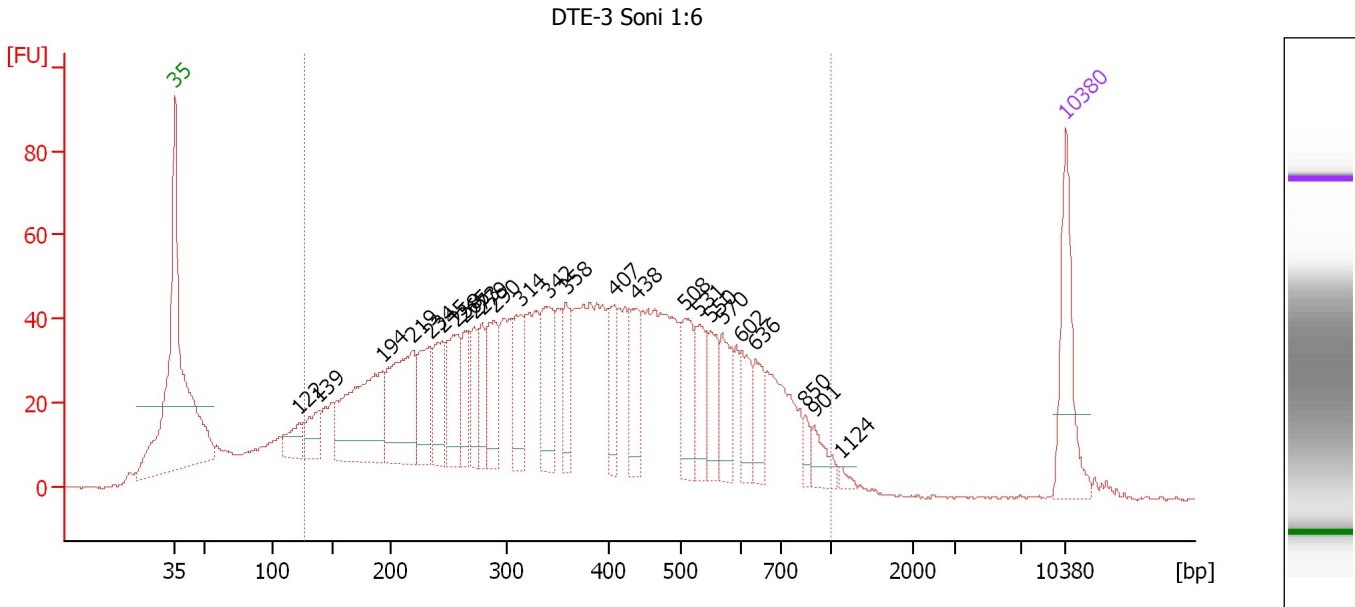
... Region table for sample 3 : DTE-2 Soni 1:6

From [bp]	To [bp]	Average Size [bp]	Molarity [pmol/l]	Conc. [pg/μl]	Corr. Area	% of Total	Size distribution in CV [%]	Color
282	4,558	1,222	4,582.5	2,350.06	2,173.7	92	59.7	■

Assay Class: High Sensitivity DNA Assay
 Data Path: C:\...ents and Settings\Bioanalyzer\2012-11-08\2012-11-08_002.xad

Created: 11/8/2012 1:56:14 PM
 Modified: 11/8/2012 2:42:09 PM

Electropherogram Summary Continued ...



Overall Results for sample 4 : DTE-3 Soni 1:6

Number of peaks found: 25 Corr. Area 1: 2,012.6
 Noise: 0.3

Peak table for sample 4 : DTE-3 Soni 1:6

Peak	Size [bp]	Conc. [pg/μl]	Molarity [pmol/l]	Observations
1	35	125.00	5,411.3	Lower Marker
2	122	37.00	458.6	
3	139	46.31	504.2	
4	194	202.74	1,586.6	
5	219	160.72	1,110.4	
6	234	76.35	494.1	
7	245	72.14	446.7	
8	258	87.89	516.4	
9	265	46.71	267.3	
10	273	47.21	262.3	
11	279	47.49	257.9	
12	290	73.14	382.0	
13	314	65.62	316.3	
14	342	79.57	352.6	
15	358	53.01	224.1	
16	407	52.00	193.6	
17	438	56.69	196.0	
18	508	67.21	200.5	
19	531	49.84	142.1	
20	550	48.74	134.3	
21	570	49.55	131.7	
22	602	39.13	98.4	
23	636	38.69	92.2	
24	850	12.14	21.6	
25	901	24.00	40.4	
26	1,124	4.93	6.6	

Assay Class: High Sensitivity DNA Assay
Data Path: C:\...ents and Settings\Bioanalyzer\2012-11-08\2012-11-08_002.xad

Created: 11/8/2012 1:56:14 PM
Modified: 11/8/2012 2:42:09 PM

Electropherogram Summary Continued ...**... Peak table for sample 4 : DTE-3 Soni 1:6**

Peak	Size [bp]	Conc. [pg/ μ l]	Molarity [pmol/l]	Observations
27	10,380	75.00	10.9	Upper Marker

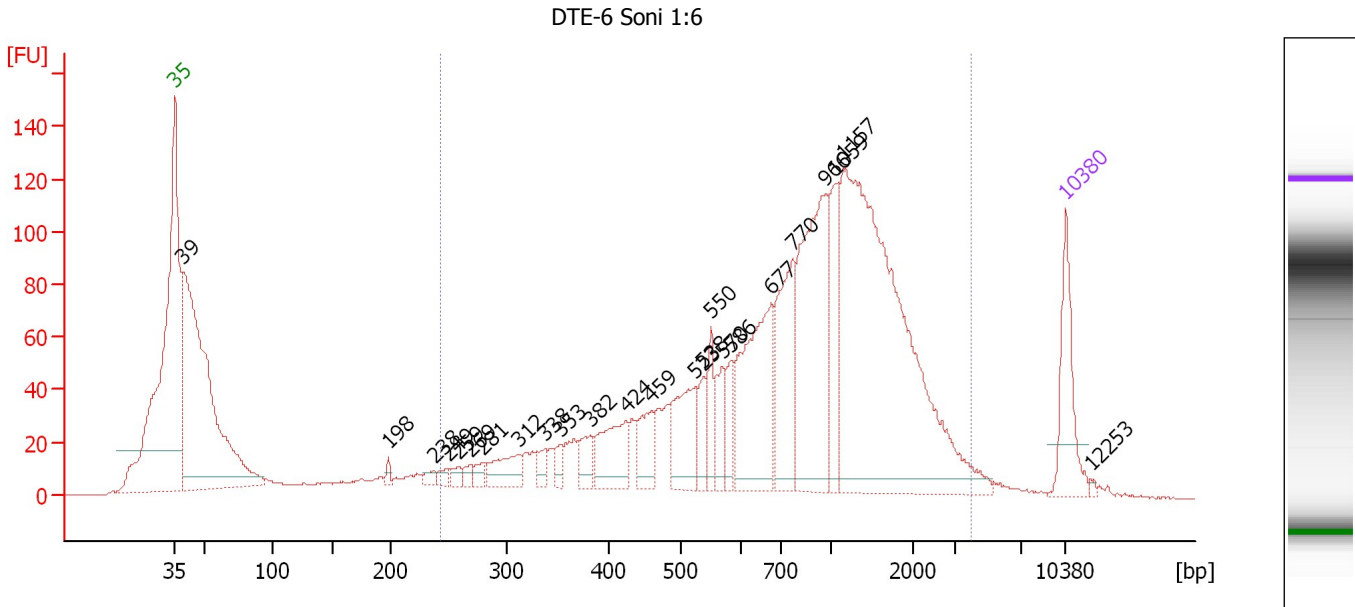
Region table for sample 4 : DTE-3 Soni 1:6

From [bp]	To [bp]	Average Size [bp]	Molarity [pmol/l]	Conc. [pg/ μ l]	Corr. Area	% of Total	Size distribution in CV [%]	Color
127	1,000	393	14,640.6	2,824.92	2,012.6	91	43.2	

Assay Class: High Sensitivity DNA Assay
 Data Path: C:\...ents and Settings\Bioanalyzer\2012-11-08\2012-11-08_002.xad

Created: 11/8/2012 1:56:14 PM
 Modified: 11/8/2012 2:42:09 PM

Electropherogram Summary Continued ...



Overall Results for sample 5 : DTE-6 Soni 1:6

Number of peaks found: 24 Corr. Area 1: 2,304.4
 Noise: 0.3

Peak table for sample 5 : DTE-6 Soni 1:6

Peak	Size [bp]	Conc. [pg/μl]	Molarity [pmol/l]	Observations
1	35	125.00	5,411.3	Lower Marker
2	39	810.80	31,374.7	
3	198	8.32	63.7	
4	238	10.80	68.9	
5	249	11.90	72.3	
6	259	12.08	70.6	
7	269	12.09	68.2	
8	281	14.02	75.7	
9	312	51.81	251.6	
10	338	19.26	86.3	
11	353	18.35	78.9	
12	382	34.53	136.9	
13	424	87.01	310.9	
14	459	50.73	167.3	
15	523	96.93	280.6	
16	538	35.48	99.9	
17	550	44.49	122.5	
18	570	42.08	111.9	
19	586	35.53	91.9	
20	677	206.85	462.9	
21	770	151.48	297.9	
22	966	261.06	409.4	
23	1,059	91.80	131.3	
24	1,157	664.44	870.1	
25	10,380	75.00	10.9	Upper Marker
26	12,253	0.00	0.0	

Assay Class: High Sensitivity DNA Assay
Data Path: C:\...ents and Settings\Bioanalyzer\2012-11-08\2012-11-08_002.xad

Created: 11/8/2012 1:56:14 PM
Modified: 11/8/2012 2:42:09 PM

Electropherogram Summary Continued ...

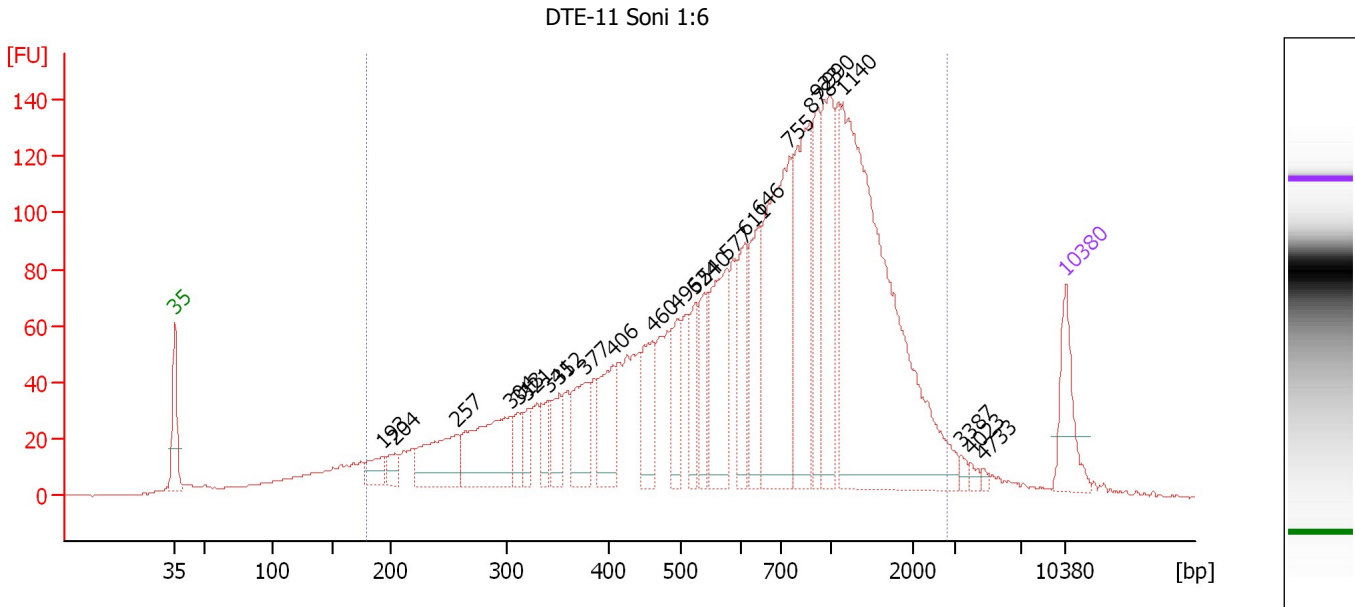
... Region table for sample 5 : DTE-6 Soni 1:6

From [bp]	To [bp]	Average Size [bp]	Molarity [pmol/l]	Conc. [pg/μl]	Corr. Area	% of Total	Size distribution in CV [%]	Color
243	3,993	1,019	5,254.3	2,231.19	2,304.4	76	61.1	■

Assay Class: High Sensitivity DNA Assay
 Data Path: C:\...ents and Settings\Bioanalyzer\2012-11-08\2012-11-08_002.xad

Created: 11/8/2012 1:56:14 PM
 Modified: 11/8/2012 2:42:09 PM

Electropherogram Summary Continued ...



Overall Results for sample 6 : DTE-11 Soni 1:6

Number of peaks found: 25 Corr. Area 1: 3,221.0
 Noise: 0.3

Peak table for sample 6 : DTE-11 Soni 1:6

Peak	Size [bp]	Conc. [pg/μl]	Molarity [pmol/l]	Observations
1	35	125.00	5,411.3	Lower Marker
2	193	46.40	364.1	
3	204	32.40	240.9	
4	257	148.19	875.0	
5	304	209.79	1,044.2	
6	313	41.10	199.0	
7	321	39.48	186.5	
8	341	41.16	183.0	
9	352	62.29	267.9	
10	377	108.79	437.0	
11	406	113.31	422.5	
12	460	106.96	352.1	
13	496	80.44	245.8	
14	524	74.00	213.8	
15	540	82.23	230.7	
16	577	180.52	474.2	
17	611	112.32	278.7	
18	646	126.65	296.8	
19	755	399.53	802.2	
20	878	242.19	418.0	
21	923	121.96	200.3	
22	990	198.91	304.4	
23	1,140	778.89	1,035.3	
24	3,387	9.20	4.1	
25	4,023	7.89	3.0	
26	4,733	4.80	1.5	


Assay Class: High Sensitivity DNA Assay
Data Path: C:\...ents and Settings\Bioanalyzer\2012-11-08\2012-11-08_002.xad

Created: 11/8/2012 1:56:14 PM
Modified: 11/8/2012 2:42:09 PM

Electropherogram Summary Continued ...**... Peak table for sample 6 : DTE-11 Soni 1:6**

Peak	Size [bp]	Conc. [pg/ μ l]	Molarity [pmol/l]	Observations
27	10,380	75.00	10.9	Upper Marker

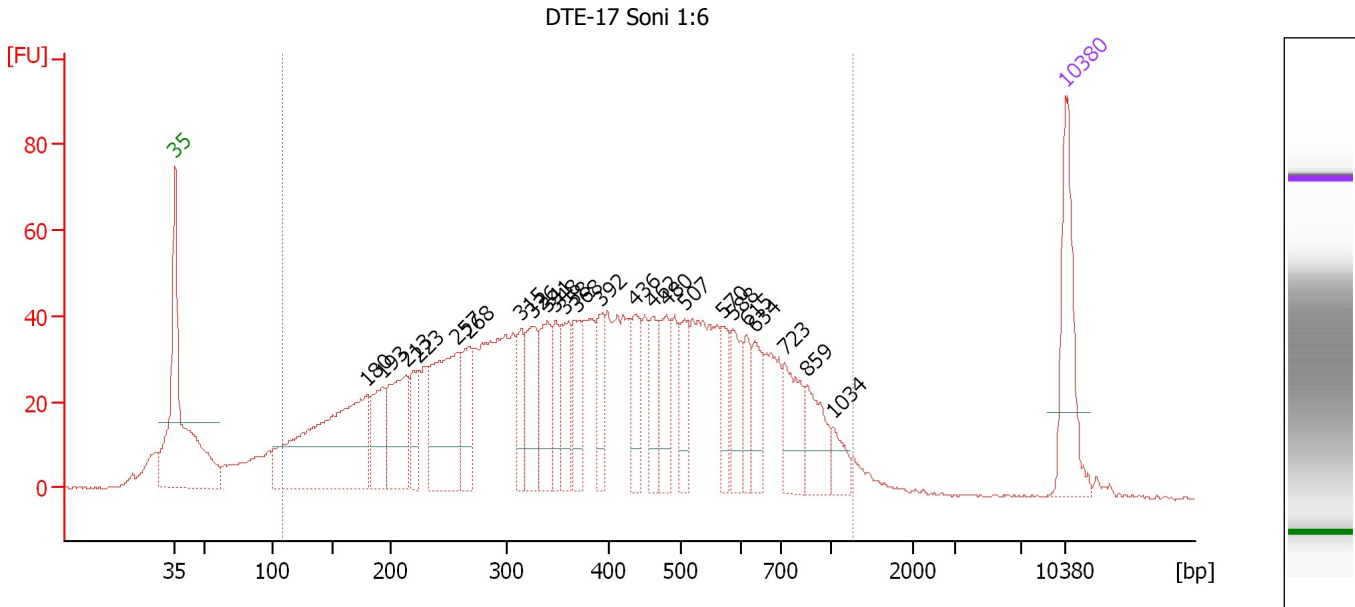
Region table for sample 6 : DTE-11 Soni 1:6

From [bp]	To [bp]	Average Size [bp]	Molarity [pmol/l]	Conc. [pg/ μ l]	Corr. Area	% of Total	Size distribution in CV [%]	Color
179	2,840	829	12,813.1	4,324.14	3,221.0	92	61.3	

Assay Class: High Sensitivity DNA Assay
 Data Path: C:\...ents and Settings\Bioanalyzer\2012-11-08\2012-11-08_002.xad

Created: 11/8/2012 1:56:14 PM
 Modified: 11/8/2012 2:42:09 PM

Electropherogram Summary Continued ...



Setpoint Deviations for sample 7 : DTE-17 Soni 1:6

Height Threshold [FU] : 10

Overall Results for sample 7 : DTE-17 Soni 1:6

Number of peaks found: 24 Corr. Area 1: 1,914.6
 Noise: 0.3

Peak table for sample 7 : DTE-17 Soni 1:6

Peak	Size [bp]	Conc. [pg/μl]	Molarity [pmol/l]	Observations
1	35	125.00	5,411.3	Lower Marker
2	180	318.82	2,690.3	
3	193	70.96	557.4	
4	213	113.58	808.0	
5	223	48.58	329.5	
6	257	171.38	1,008.8	
7	268	62.60	353.4	
8	315	45.43	218.6	
9	326	79.79	371.0	
10	341	68.56	305.0	
11	348	44.10	191.7	
12	358	53.14	225.1	
13	368	52.81	217.4	
14	392	42.03	162.2	
15	436	49.07	170.3	
16	462	44.80	147.0	
17	480	56.05	176.8	
18	507	45.23	135.2	
19	570	32.16	85.5	
20	588	46.12	118.8	
21	615	28.57	70.3	
22	634	40.04	95.6	

Assay Class: High Sensitivity DNA Assay
 Data Path: C:\...ents and Settings\Bioanalyzer\2012-11-08\2012-11-08_002.xad

Created: 11/8/2012 1:56:14 PM
 Modified: 11/8/2012 2:42:09 PM

Electropherogram Summary Continued ...

... Peak table for sample 7 : DTE-17 Soni 1:6

Peak	Size [bp]	Conc. [pg/μl]	Molarity [pmol/l]	Observations
23	723	58.95	123.6	
24	859	49.90	88.1	
25	1,034	19.66	28.8	
26	10,380	75.00	10.9	Upper Marker

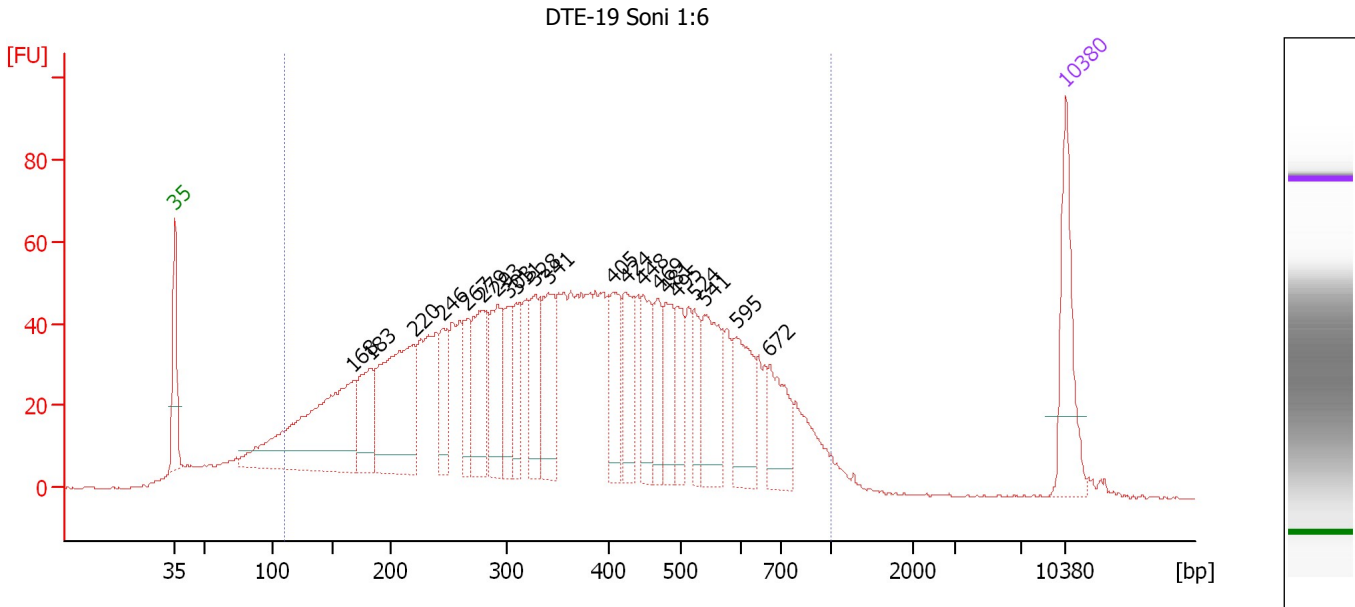
Region table for sample 7 : DTE-17 Soni 1:6

From [bp]	To [bp]	Average Size [bp]	Molarity [pmol/l]	Conc. [pg/μl]	Corr. Area	% of Total	Size distribution in CV [%]	Color
108	1,265	421	12,737.8	2,464.08	1,914.6	94	48.1	

Assay Class: High Sensitivity DNA Assay
 Data Path: C:\...ents and Settings\Bioanalyzer\2012-11-08\2012-11-08_002.xad

Created: 11/8/2012 1:56:14 PM
 Modified: 11/8/2012 2:42:09 PM

Electropherogram Summary Continued ...



Overall Results for sample 8 : DTE-19 Soni 1:6

Number of peaks found: 21 Corr. Area 1: 2,211.3
 Noise: 0.3


Peak table for sample 8 : DTE-19 Soni 1:6

Peak	Size [bp]	Conc. [pg/μl]	Molarity [pmol/l]	Observations
1	35	125.00	5,411.3	Lower Marker
2	168	314.54	2,839.6	
3	183	87.78	727.6	
4	220	229.12	1,579.8	
5	246	52.10	321.4	
6	267	53.13	302.0	
7	279	107.37	582.7	
8	293	86.61	447.9	
9	303	57.27	286.8	
10	311	61.35	299.3	
11	328	69.38	320.2	
12	341	100.22	445.1	
13	405	75.04	280.5	
14	424	66.75	238.6	
15	448	60.82	205.9	
16	469	49.27	159.3	
17	481	61.14	192.6	
18	495	49.92	152.8	
19	524	37.87	109.6	
20	541	92.63	259.6	
21	595	80.39	204.8	
22	672	66.54	149.9	
23	10,380	75.00	10.9	Upper Marker

Assay Class: High Sensitivity DNA Assay
Data Path: C:\...ents and Settings\Bioanalyzer\2012-11-08\2012-11-08_002.xad

Created: 11/8/2012 1:56:14 PM
Modified: 11/8/2012 2:42:09 PM

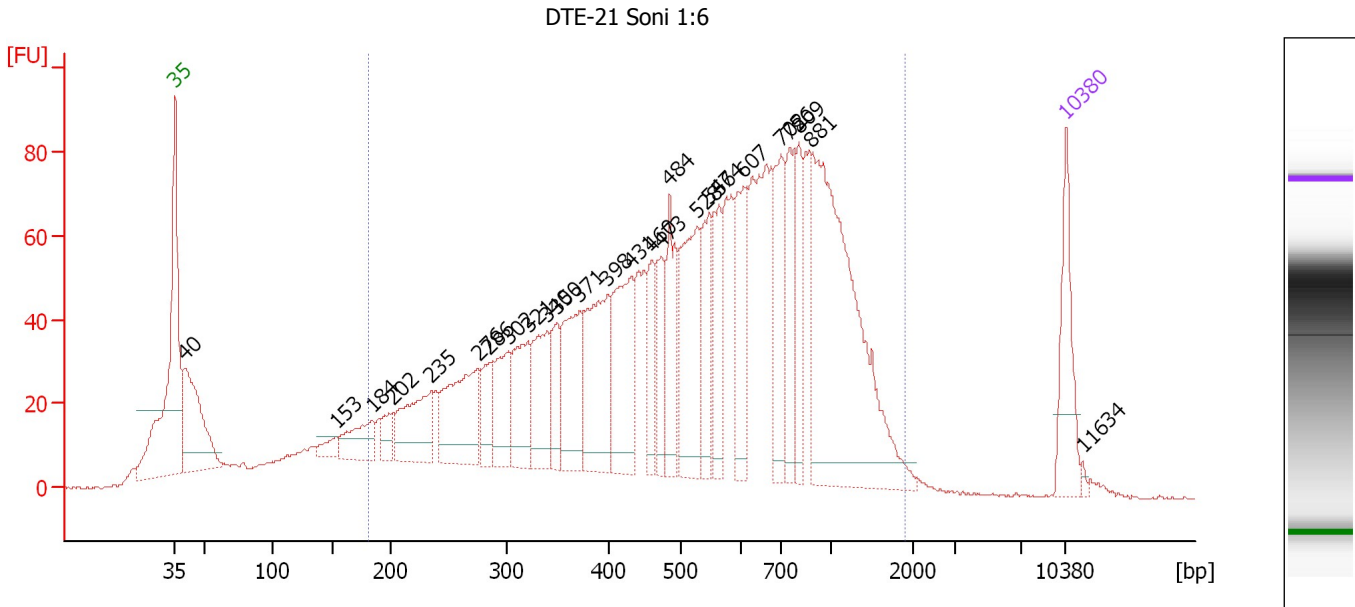
Electropherogram Summary Continued ...**... Region table for sample 8 : DTE-19 Soni 1:6**

From [bp]	To [bp]	Average Size [bp]	Molarity [pmol/l]	Conc. [pg/μl]	Corr. Area	% of Total	Size distribution in CV [%]	Co lor
110	1,000	386	15,842.7	2,927.29	2,211.3	93	44.0	

Assay Class: High Sensitivity DNA Assay
 Data Path: C:\...ents and Settings\Bioanalyzer\2012-11-08\2012-11-08_002.xad

Created: 11/8/2012 1:56:14 PM
 Modified: 11/8/2012 2:42:09 PM

Electropherogram Summary Continued ...



Overall Results for sample 9 : DTE-21 Soni 1:6

Number of peaks found: 26 Corr. Area 1: 2,435.8
 Noise: 0.2

Peak table for sample 9 : DTE-21 Soni 1:6

Peak	Size [bp]	Conc. [pg/μl]	Molarity [pmol/l]	Observations
1	35	125.00	5,411.3	Lower Marker
2	40	222.56	8,443.5	
3	153	22.80	225.5	
4	184	67.45	555.8	
5	202	31.86	239.4	
6	235	116.90	753.9	
7	276	159.60	876.4	
8	286	57.71	305.8	
9	302	85.73	429.8	
10	321	100.17	472.3	
11	340	101.05	449.7	
12	350	58.94	255.4	
13	371	127.57	520.6	
14	398	162.86	619.3	
15	431	151.52	532.2	
16	460	69.11	227.8	
17	473	70.37	225.4	
18	484	96.58	302.0	
19	528	170.45	488.9	
20	547	86.56	239.6	
21	564	82.55	221.6	
22	607	111.29	277.6	
23	702	106.66	230.1	
24	756	82.83	166.1	
25	809	75.07	140.6	
26	881	454.57	781.7	


Assay Class: High Sensitivity DNA Assay
Data Path: C:\...ents and Settings\Bioanalyzer\2012-11-08\2012-11-08_002.xad

Created: 11/8/2012 1:56:14 PM
Modified: 11/8/2012 2:42:09 PM

Electropherogram Summary Continued ...**... Peak table for sample 9 : DTE-21 Soni 1:6**

Peak	Size [bp]	Conc. [pg/ μ l]	Molarity [pmol/l]	Observations
27	10,380	75.00	10.9	Upper Marker
28	11,634	0.00	0.0	

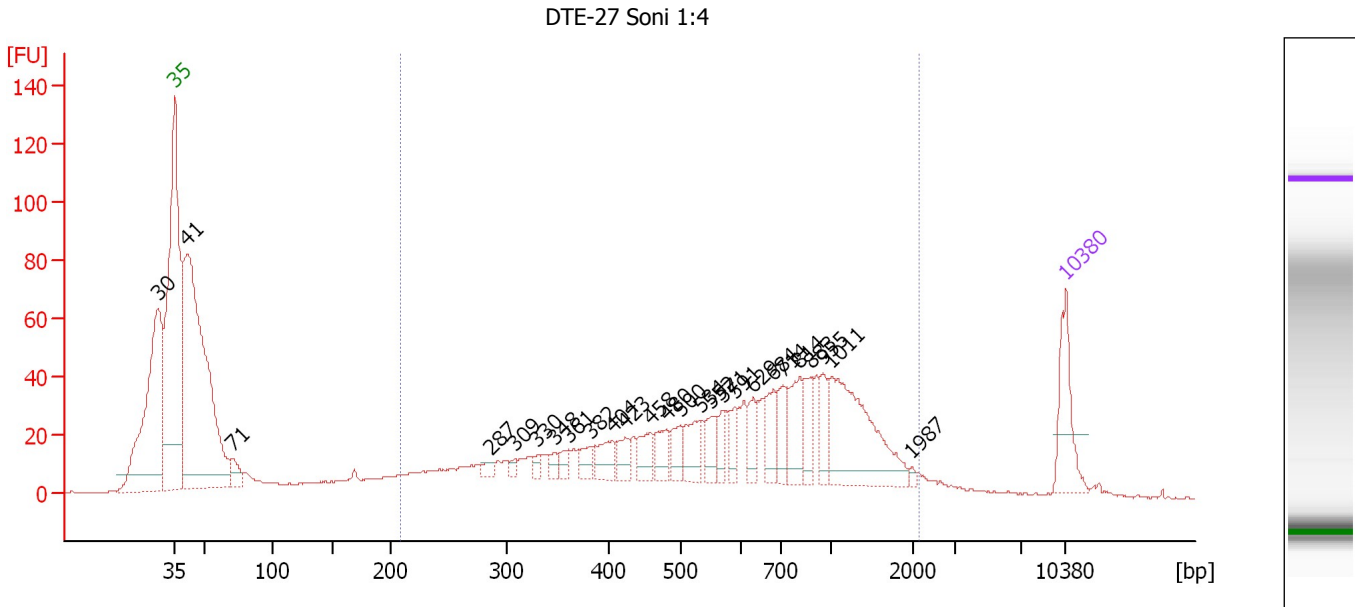
Region table for sample 9 : DTE-21 Soni 1:6

From [bp]	To [bp]	Average Size [bp]	Molarity [pmol/l]	Conc. [pg/ μ l]	Corr. Area	% of Total	Size distribution in CV [%]	Color
181	1,899	604	12,678.0	3,557.03	2,435.8	87	52.6	

Assay Class: High Sensitivity DNA Assay
 Data Path: C:\...ents and Settings\Bioanalyzer\2012-11-08\2012-11-08_002.xad

Created: 11/8/2012 1:56:14 PM
 Modified: 11/8/2012 2:42:09 PM

Electropherogram Summary Continued ...



Overall Results for sample 10 : DTE-27 Soni 1:4

Number of peaks found: 26 Corr. Area 1: 1,049.8
 Noise: 0.2

Peak table for sample 10 : DTE-27 Soni 1:4

Peak	Size [bp]	Conc. [pg/μl]	Molarity [pmol/l]	Observations
1	30	0.00	0.0	
2	35	125.00	5,411.3	Lower Marker
3	41	969.41	35,567.7	
4	71	33.88	725.9	
5	287	13.48	71.1	
6	309	10.58	51.9	
7	330	12.89	59.1	
8	348	16.73	72.9	
9	361	19.07	80.1	
10	382	26.80	106.3	
11	404	45.94	172.1	
12	423	31.10	111.4	
13	458	42.53	140.8	
14	480	42.09	132.8	
15	500	35.44	107.5	
16	534	56.02	159.0	
17	552	39.43	108.2	
18	571	28.41	75.3	
19	591	29.22	74.9	
20	629	34.47	83.0	
21	684	49.19	109.0	
22	714	49.25	104.5	
23	814	66.24	123.3	
24	883	43.61	74.9	
25	955	39.87	63.2	
26	1,011	214.96	322.2	

Assay Class: High Sensitivity DNA Assay
 Data Path: C:\...ents and Settings\Bioanalyzer\2012-11-08\2012-11-08_002.xad


Created: 11/8/2012 1:56:14 PM
 Modified: 11/8/2012 2:42:09 PM

Electropherogram Summary Continued ...

... Peak table for sample 10 : DTE-27 Soni 1:4

Peak	Size [bp]	Conc. [pg/μl]	Molarity [pmol/l]	Observations
27	1,987	4.72	3.6	
28	10,380	75.00	10.9	Upper Marker

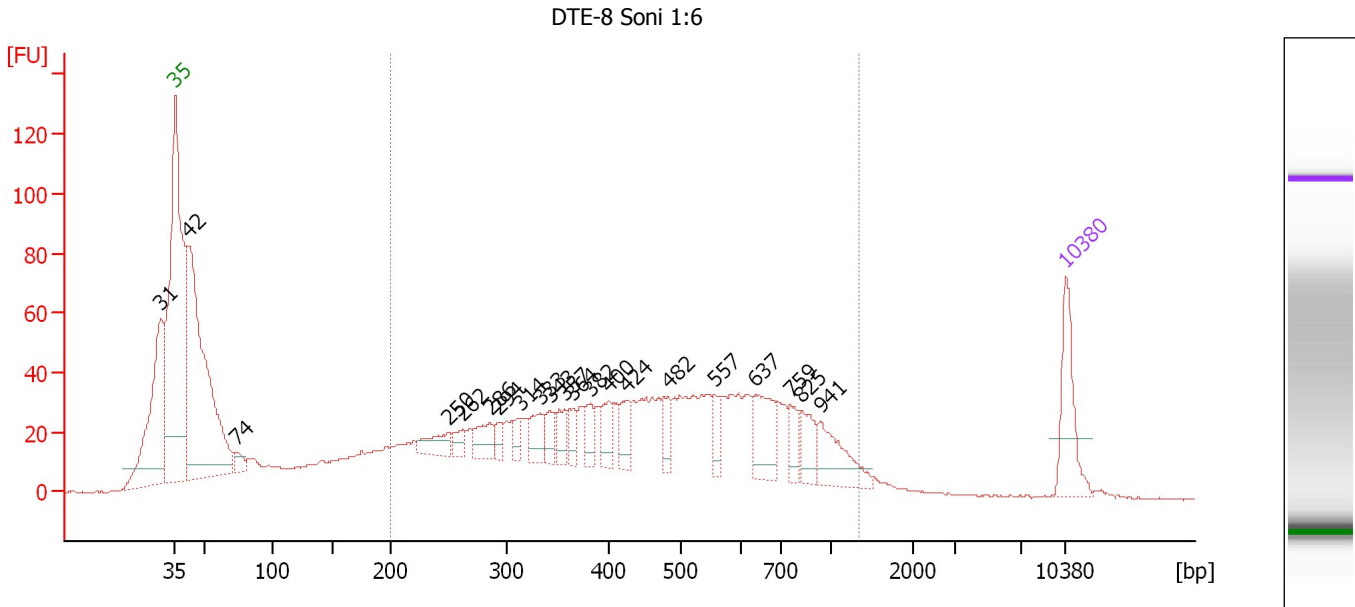
Region table for sample 10 : DTE-27 Soni 1:4

From [bp]	To [bp]	Average Size [bp]	Molarity [pmol/l]	Conc. [pg/μl]	Corr. Area	% of Total	Size distribution in CV [%]	Color
208	2,175	719	5,220.4	1,683.16	1,049.8	56	56.2	

Assay Class: High Sensitivity DNA Assay
 Data Path: C:\...ents and Settings\Bioanalyzer\2012-11-08\2012-11-08_002.xad

Created: 11/8/2012 1:56:14 PM
 Modified: 11/8/2012 2:42:09 PM

Electropherogram Summary Continued ...



Overall Results for sample 11 : DTE-8 Soni 1:6

Number of peaks found: 21 Corr. Area 1: 1,265.0
 Noise: 0.2

Peak table for sample 11 : DTE-8 Soni 1:6

Peak	Size [bp]	Conc. [pg/μl]	Molarity [pmol/l]	Observations
1	31	0.00	0.0	
2	35	125.00	5,411.3	Lower Marker
3	42	677.90	24,429.5	
4	74	22.74	465.3	
5	250	44.45	269.5	
6	262	23.08	133.3	
7	286	44.96	238.2	
8	294	20.04	103.1	
9	314	23.49	113.4	
10	333	45.20	205.4	
11	343	30.59	135.2	
12	357	31.19	132.5	
13	364	26.04	108.3	
14	382	33.62	133.4	
15	400	40.47	153.3	
16	424	39.64	141.5	
17	482	30.08	94.5	
18	557	34.06	92.7	
19	637	80.74	191.9	
20	759	30.77	61.4	
21	825	41.59	76.4	
22	941	71.18	114.6	
23	10,380	75.00	10.9	Upper Marker

Assay Class: High Sensitivity DNA Assay
Data Path: C:\...ents and Settings\Bioanalyzer\2012-11-08\2012-11-08_002.xad

Created: 11/8/2012 1:56:14 PM
Modified: 11/8/2012 2:42:09 PM

Electropherogram Summary Continued ...

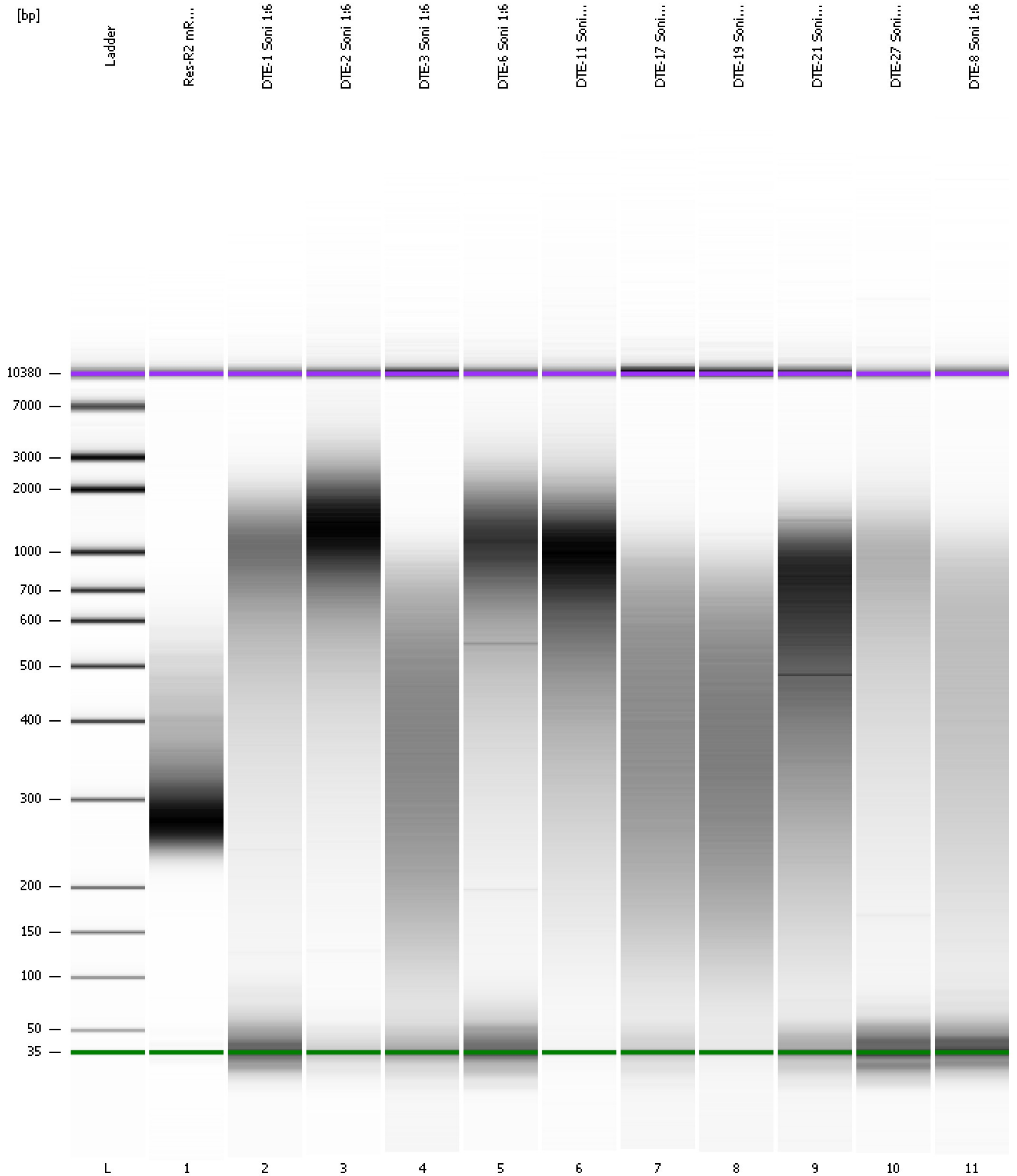
... Region table for sample 11 : DTE-8 Soni 1:6

From [bp]	To [bp]	Average Size [bp]	Molarity [pmol/l]	Conc. [pg/μl]	Corr. Area	% of Total	Size distribution in CV [%]	Color
200	1,340	495	7,610.2	1,935.26	1,265.0	61	44.4	■

Assay Class: High Sensitivity DNA Assay
Data Path: C:\...ents and Settings\Bioanalyzer\2012-11-08\2012-11-08_002.xad

Created: 11/8/2012 1:56:14 PM
Modified: 11/8/2012 2:42:09 PM

Gel Image



Assay Class: High Sensitivity DNA Assay
 Data Path: C:\...ents and Settings\Bioanalyzer\2012-11-08\2012-11-08_002.xad

Created: 11/8/2012 1:56:14 PM
 Modified: 11/8/2012 2:42:09 PM

Run Logbook

Description	Number	Source	Category	Sub Category	Time	Time Zone	User	Host
Run ended on port 1 (Number of wells acquired: 12)		Instrument	Run		11/8/2012 2:37:33 PM	(GMT --08:00) Pacific Standard Time	UC Davis	D8XSMGH1
Run started on port 1 (File: C:\Documents and Settings\Bioanalyzer\2012-11-08\2012-11-08_002.xad)		Instrument	Run		11/8/2012 1:56:19 PM	(GMT --08:00) Pacific Standard Time	UC Davis	D8XSMGH1
Product Number : G2938B		Instrument	Run		11/8/2012 1:56:19 PM	(GMT --08:00) Pacific Standard Time	UC Davis	D8XSMGH1
Name :		Instrument	Run		11/8/2012 1:56:19 PM	(GMT --08:00) Pacific Standard Time	UC Davis	D8XSMGH1
Vendor : Agilent Technologies		Instrument	Run		11/8/2012 1:56:19 PM	(GMT --08:00) Pacific Standard Time	UC Davis	D8XSMGH1
Serial# : DE13701086		Instrument	Run		11/8/2012 1:56:19 PM	(GMT --08:00) Pacific Standard Time	UC Davis	D8XSMGH1
Firmware : C.01.069		Instrument	Run		11/8/2012 1:56:19 PM	(GMT --08:00) Pacific Standard Time	UC Davis	D8XSMGH1
Cartridge : Electrode		Instrument	Run		11/8/2012 1:56:19 PM	(GMT --08:00) Pacific Standard Time	UC Davis	D8XSMGH1