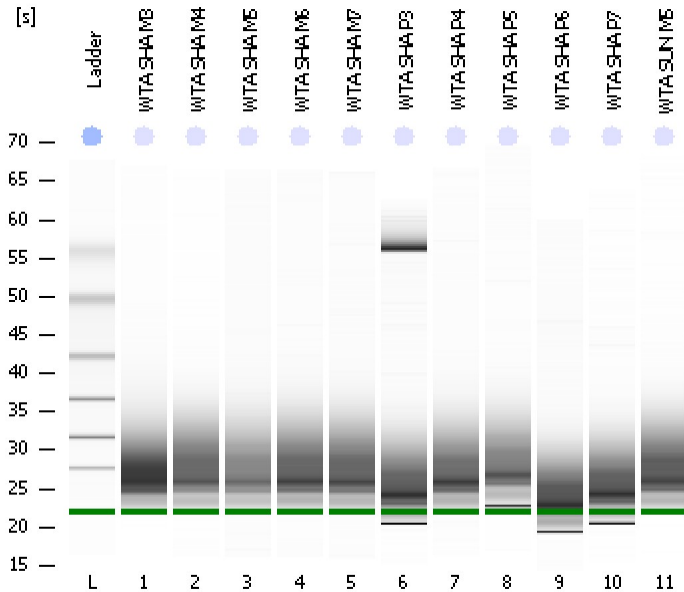


Assay Class: Eukaryote Total RNA Pico  
Data Path: C:\...ents and Settings\Bioanalyzer\2012-12-06\2012-12-06\_002.xad

Created: 12/6/2012 10:16:15 AM  
Modified: 12/6/2012 10:39:17 AM

Electrophoresis File Run Summary



Instrument Information:

Instrument Name: DE13701086      Firmware: C.01.069  
Serial#: DE13701086      Type: G2938B

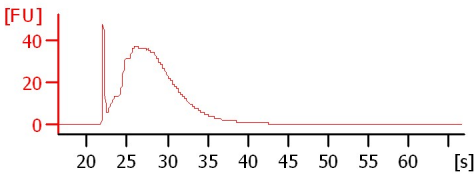
Assay Information:

Assay Origin Path: C:\Program Files\Agilent\2100 bioanalyzer\2100 expert\assays\RNA\Eukaryote Total RNA Pico Series II.xsy  
Assay Class: Eukaryote Total RNA Pico  
Version: 2.6  
Assay Comments: Total RNA Analysis pg sensitivity (Eukaryote)  
© Copyright 2003 - 2009 Agilent Technologies, Inc.

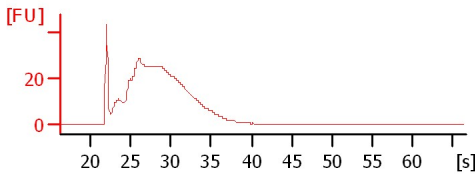
Chip Information:

Chip Lot #:   
Reagent Kit Lot #:   
Chip Comments:

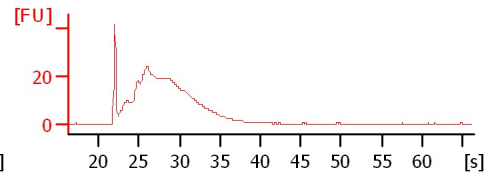
WTA SHA M3  
RIN: 2.30



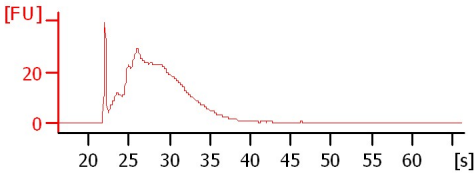
WTA SHA M4  
RIN: 2.30



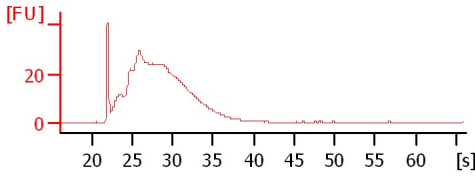
WTA SHA M5  
RIN: 2.40



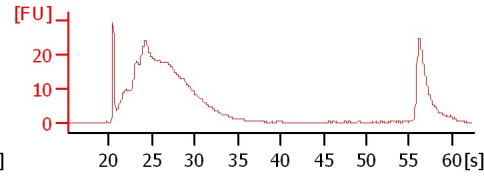
WTA SHA M6  
RIN: 2.30



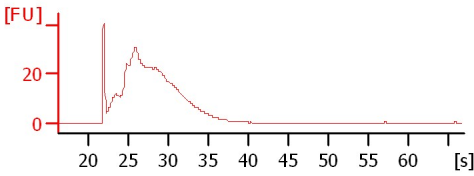
WTA SHA M7  
RIN: 2.30



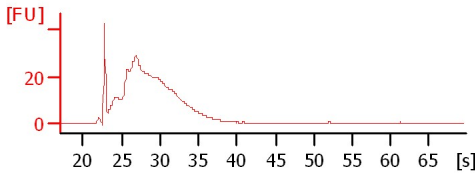
WTA SHA P3  
RIN: 2.30



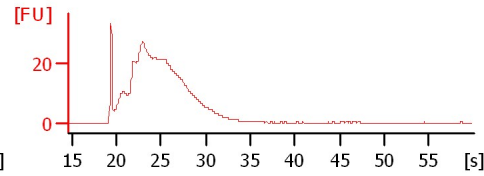
WTA SHA P4  
RIN: 2.30



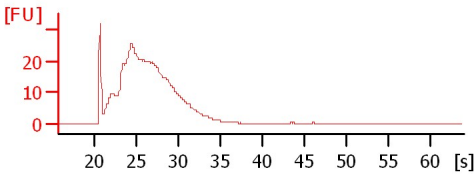
WTA SHA P5  
RIN: 1.90



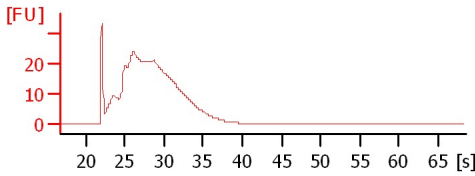
WTA SHA P6  
RIN: 2.50



WTA SHA P7  
RIN: 2.30



WTA SUN M5  
RIN: 2.30



Assay Class: Eukaryote Total RNA Pico  
 Data Path: C:\...ents and Settings\Bioanalyzer\2012-12-06\2012-12-06\_002.xad

Created: 12/6/2012 10:16:15 AM  
 Modified: 12/6/2012 10:39:17 AM

**Electrophoresis File Run Summary (Chip Summary)**

Sample Name	Sample Comment	Status	Result Label	Result Color
WTA SHA M3		✓	RIN: 2.30	
WTA SHA M4		✓	RIN: 2.30	
WTA SHA M5		✓	RIN: 2.40	
WTA SHA M6		✓	RIN: 2.30	
WTA SHA M7		✓	RIN: 2.30	
WTA SHA P3		✓	RIN: 2.30	
WTA SHA P4		✓	RIN: 2.30	
WTA SHA P5		✓	RIN: 1.90	
WTA SHA P6		✓	RIN: 2.50	
WTA SHA P7		✓	RIN: 2.30	
WTA SUN M5		✓	RIN: 2.30	
Ladder		✓	All Other Samples	

**Chip Lot #**

**Reagent Kit Lot #**

**Chip Comments :**

Assay Class: Eukaryote Total RNA Pico  
Data Path: C:\...ents and Settings\Bioanalyzer\2012-12-06\2012-12-06\_002.xad

Created: 12/6/2012 10:16:15 AM  
Modified: 12/6/2012 10:39:17 AM

**Electrophoresis Assay Details**

**General Analysis Settings**

Number of Available Sample and Ladder Wells (Max.) : 12  
Minimum Visible Range [s] : 17  
Maximum Visible Range [s] : 70  
Start Analysis Time Range [s] : 18  
End Analysis Time Range [s] : 69  
Ladder Concentration [pg/ $\mu$ l] : 1000  
Lower Marker Concentration [pg/ $\mu$ l] : 0  
Upper Marker Concentration [pg/ $\mu$ l] : 0  
Used Lower Marker for Quantitation  
Standard Curve Fit is Logarithmic  
Show Data Aligned to Lower Marker

**Integrator Settings**

Integration Start Time [s] : 18  
Integration End Time [s] : 69  
Slope Threshold : 0.6  
Height Threshold [FU] : 0.5  
Area Threshold : 0.2  
Width Threshold [s] : 0.3  
Baseline Plateau [s] : 6

**Filter Settings**

Filter Width [s] : 0.5  
Polynomial Order : 4

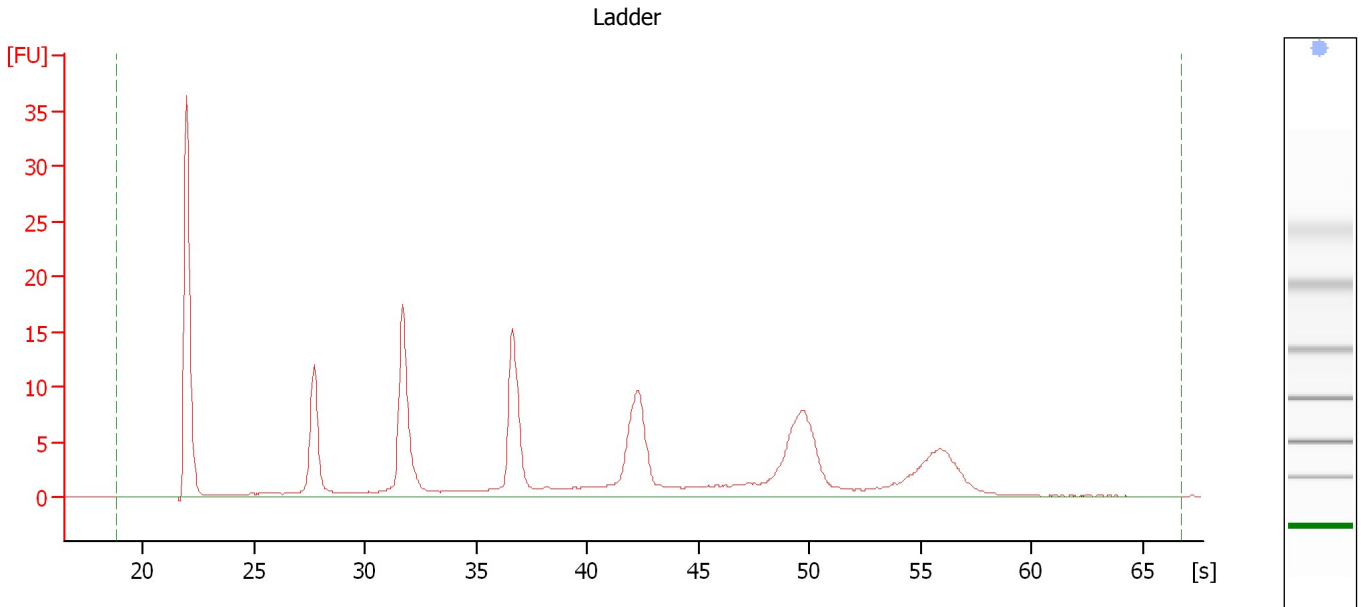
**Ladder**

Ladder Peak	Size
1	25
2	200
3	500
4	1000
5	2000
6	4000

Assay Class: Eukaryote Total RNA Pico  
Data Path: C:\...ents and Settings\Bioanalyzer\2012-12-06\2012-12-06\_002.xad

Created: 12/6/2012 10:16:15 AM  
Modified: 12/6/2012 10:39:17 AM

**Electropherogram Summary**



**Overall Results for Ladder**

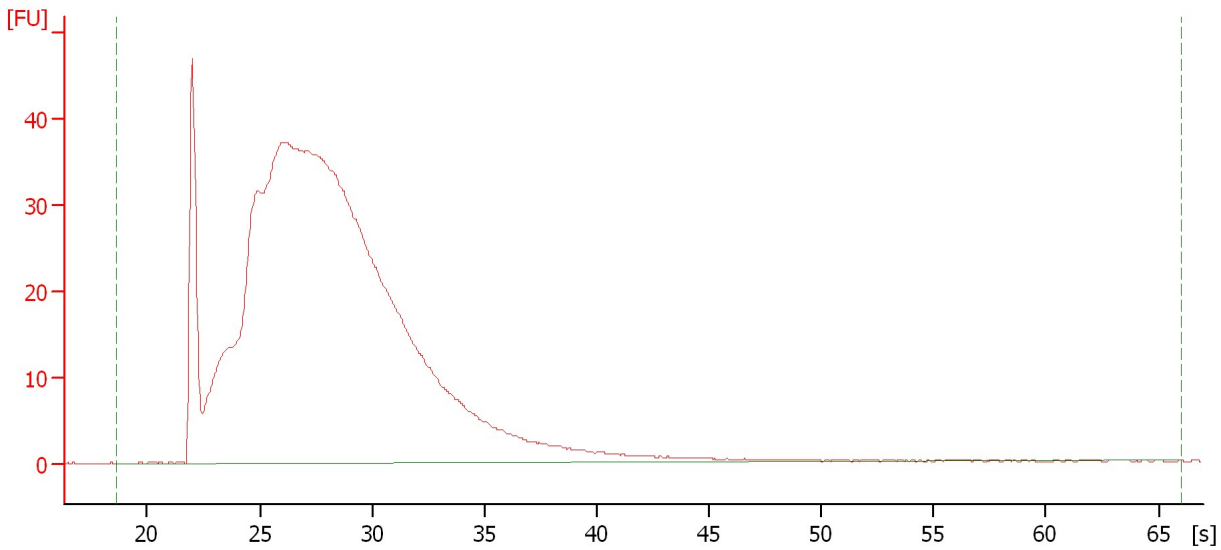
RNA Area:	166.3	Result Flagging Color:	<span style="background-color: #add8e6; border: 1px solid black; display: inline-block; width: 20px; height: 10px;"></span>
RNA Concentration:	1,000 pg/ $\mu$ l	Result Flagging Label:	All Other Samples

Assay Class: Eukaryote Total RNA Pico  
Data Path: C:\...ents and Settings\Bioanalyzer\2012-12-06\2012-12-06\_002.xad

Created: 12/6/2012 10:16:15 AM  
Modified: 12/6/2012 10:39:17 AM

**Electropherogram Summary Continued ...**

WTA SHA M3



**Overall Results for sample 1 : WTA SHA M3**

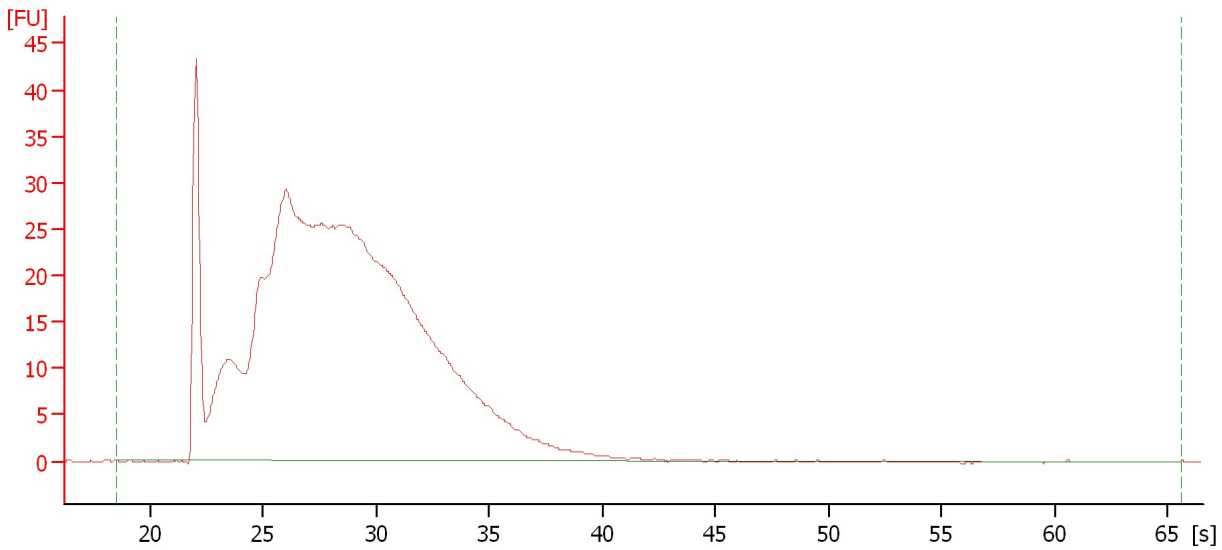
RNA Area:	1,009.1	RNA Integrity Number (RIN):	2.3 (B.02.08)
RNA Concentration:	6,068 pg/ $\mu$ l	Result Flagging Color:	<span style="background-color: #ccccff; border: 1px solid black; display: inline-block; width: 20px; height: 10px;"></span>
rRNA Ratio [28s / 18s]:	0.0	Result Flagging Label:	RIN: 2.30

Assay Class: Eukaryote Total RNA Pico  
Data Path: C:\...ents and Settings\Bioanalyzer\2012-12-06\2012-12-06\_002.xad

Created: 12/6/2012 10:16:15 AM  
Modified: 12/6/2012 10:39:17 AM

**Electropherogram Summary Continued ...**

WTA SHA M4



**Overall Results for sample 2 : WTA SHA M4**

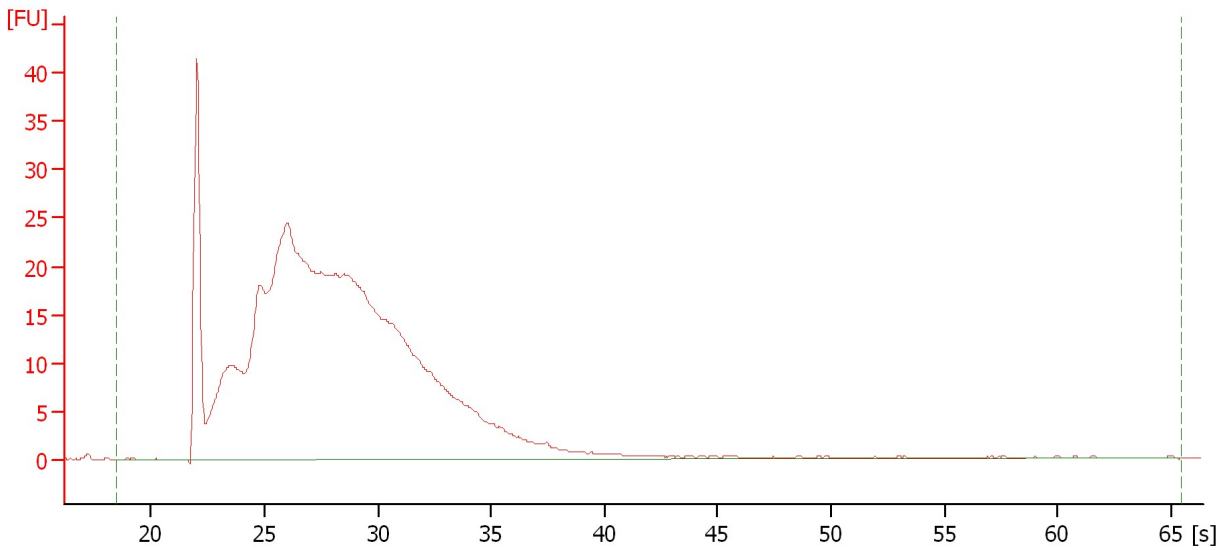
RNA Area:	809.1	RNA Integrity Number (RIN):	2.3 (B.02.08)
RNA Concentration:	4,865 pg/μl	Result Flagging Color:	<span style="background-color: #ccccff; border: 1px solid black; display: inline-block; width: 20px; height: 10px;"></span>
rRNA Ratio [28s / 18s]:	0.0	Result Flagging Label:	RIN: 2.30

Assay Class: Eukaryote Total RNA Pico  
Data Path: C:\...ents and Settings\Bioanalyzer\2012-12-06\2012-12-06\_002.xad

Created: 12/6/2012 10:16:15 AM  
Modified: 12/6/2012 10:39:17 AM

**Electropherogram Summary Continued ...**

WTA SHA M5



**Overall Results for sample 3 : WTA SHA M5**

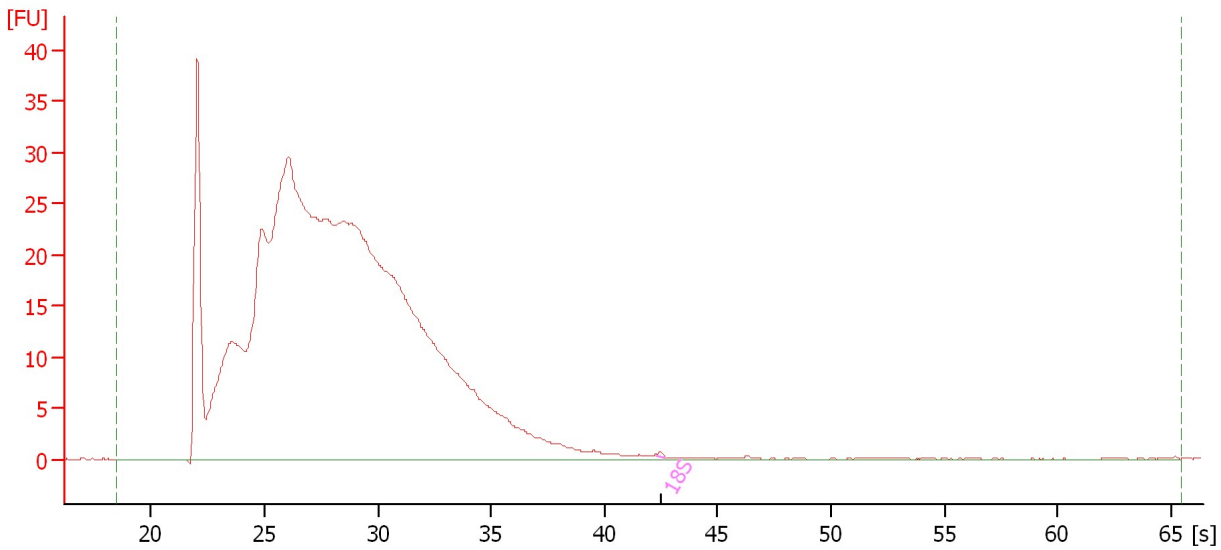
RNA Area:	634.1	RNA Integrity Number (RIN):	2.4 (B.02.08)
RNA Concentration:	3,813 pg/μl	Result Flagging Color:	<span style="background-color: #ccccff; border: 1px solid black; display: inline-block; width: 20px; height: 10px;"></span>
rRNA Ratio [28s / 18s]:	0.0	Result Flagging Label:	RIN: 2.40

Assay Class: Eukaryote Total RNA Pico  
Data Path: C:\...ents and Settings\Bioanalyzer\2012-12-06\2012-12-06\_002.xad

Created: 12/6/2012 10:16:15 AM  
Modified: 12/6/2012 10:39:17 AM

**Electropherogram Summary Continued ...**

WTA SHA M6



**Overall Results for sample 4 : WTA SHA M6**

RNA Area:	771.0	RNA Integrity Number (RIN):	2.3 (B.02.08)
RNA Concentration:	4,636 pg/μl	Result Flagging Color:	<span style="background-color: #ccccff; border: 1px solid black; display: inline-block; width: 20px; height: 10px;"></span>
rRNA Ratio [28s / 18s]:	0.0	Result Flagging Label:	RIN: 2.30

**Fragment table for sample 4 : WTA SHA M6**

Name	Start Time [s]	End Time [s]	Area	% of total Area
18S	42.34	42.67	0.3	0.0

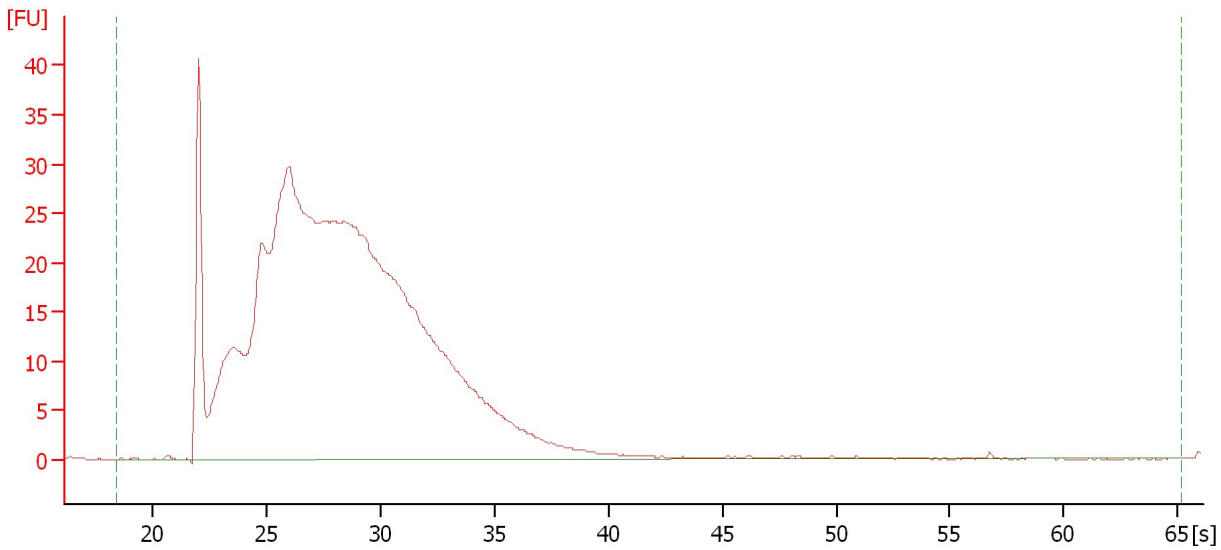


Assay Class: Eukaryote Total RNA Pico  
Data Path: C:\...ents and Settings\Bioanalyzer\2012-12-06\2012-12-06\_002.xad

Created: 12/6/2012 10:16:15 AM  
Modified: 12/6/2012 10:39:17 AM

**Electropherogram Summary Continued ...**

WTA SHA M7



**Overall Results for sample 5 : WTA SHA M7**

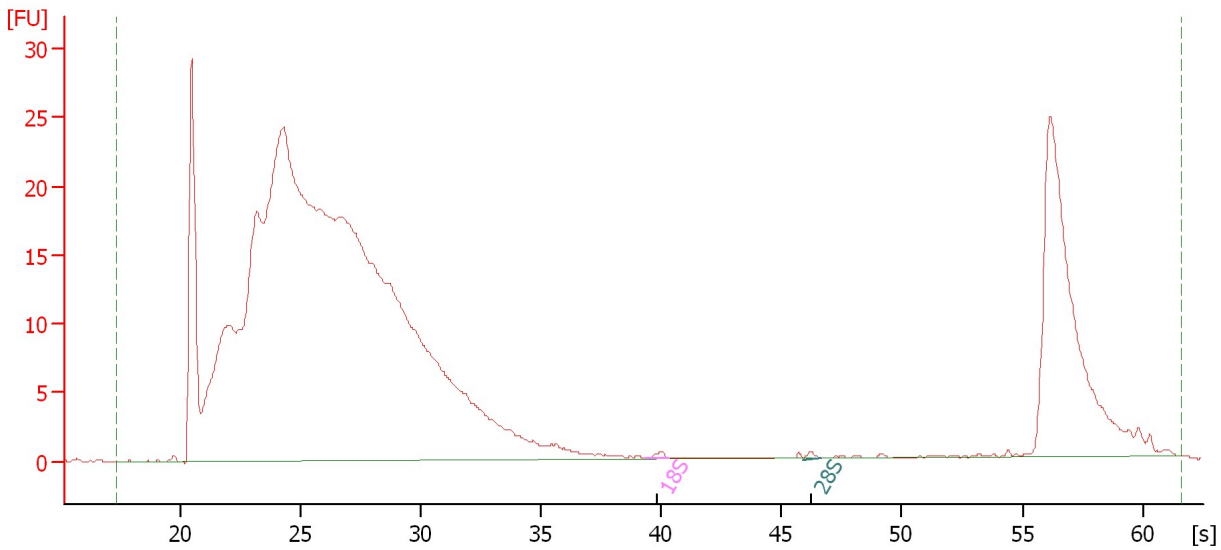
RNA Area:	794.8	RNA Integrity Number (RIN):	2.3 (B.02.08)
RNA Concentration:	4,779 pg/ $\mu$ l	Result Flagging Color:	<span style="background-color: #ccccff; border: 1px solid black; display: inline-block; width: 20px; height: 10px;"></span>
rRNA Ratio [28s / 18s]:	0.0	Result Flagging Label:	RIN: 2.30

Assay Class: Eukaryote Total RNA Pico  
Data Path: C:\...ents and Settings\Bioanalyzer\2012-12-06\2012-12-06\_002.xad

Created: 12/6/2012 10:16:15 AM  
Modified: 12/6/2012 10:39:17 AM

**Electropherogram Summary Continued ...**

WTA SHA P3



**Overall Results for sample 6 : WTA SHA P3**

RNA Area: 658.8                      RNA Integrity Number (RIN): 2.3 (B.02.08)  
RNA Concentration: 3,962 pg/μl                      Result Flagging Color:   
rRNA Ratio [28s / 18s]: 0.8                      Result Flagging Label: RIN: 2.30

**Fragment table for sample 6 : WTA SHA P3**

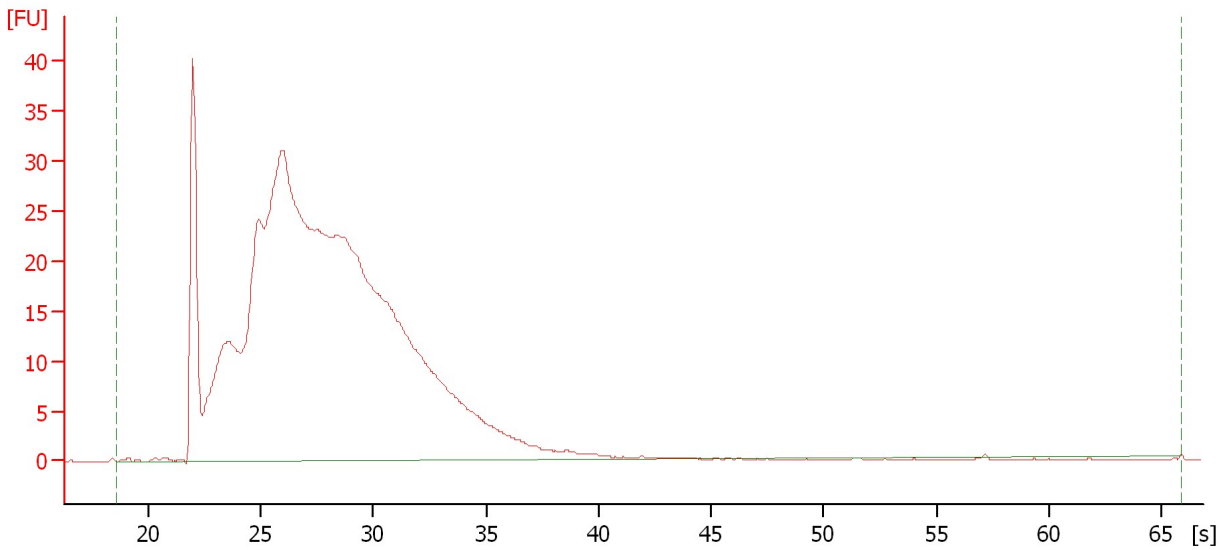
Name	Start Time [s]	End Time [s]	Area	% of total Area
18S	39.31	40.30	0.5	0.1
28S	45.92	46.63	0.4	0.1

Assay Class: Eukaryote Total RNA Pico  
Data Path: C:\...ents and Settings\Bioanalyzer\2012-12-06\2012-12-06\_002.xad

Created: 12/6/2012 10:16:15 AM  
Modified: 12/6/2012 10:39:17 AM

**Electropherogram Summary Continued ...**

WTA SHA P4



**Overall Results for sample 7 : WTA SHA P4**

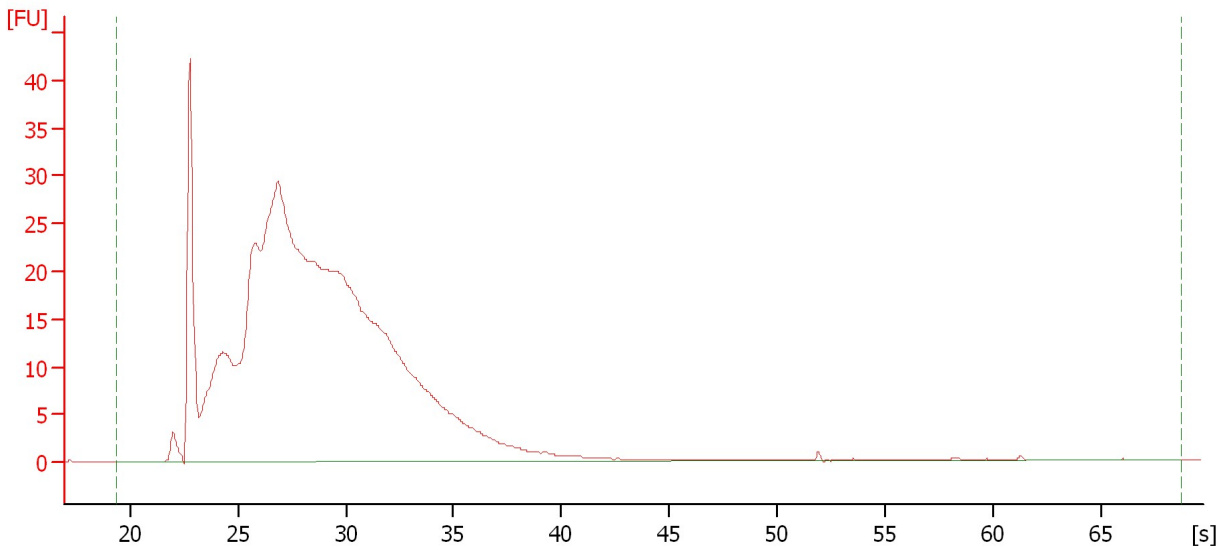
RNA Area:	736.9	RNA Integrity Number (RIN):	2.3 (B.02.08)
RNA Concentration:	4,432 pg/μl	Result Flagging Color:	<span style="background-color: #ccccff; border: 1px solid black; display: inline-block; width: 20px; height: 10px;"></span>
rRNA Ratio [28s / 18s]:	0.0	Result Flagging Label:	RIN: 2.30

Assay Class: Eukaryote Total RNA Pico  
Data Path: C:\...ents and Settings\Bioanalyzer\2012-12-06\2012-12-06\_002.xad

Created: 12/6/2012 10:16:15 AM  
Modified: 12/6/2012 10:39:17 AM

**Electropherogram Summary Continued ...**

WTA SHA P5



**Overall Results for sample 8 : WTA SHA P5**

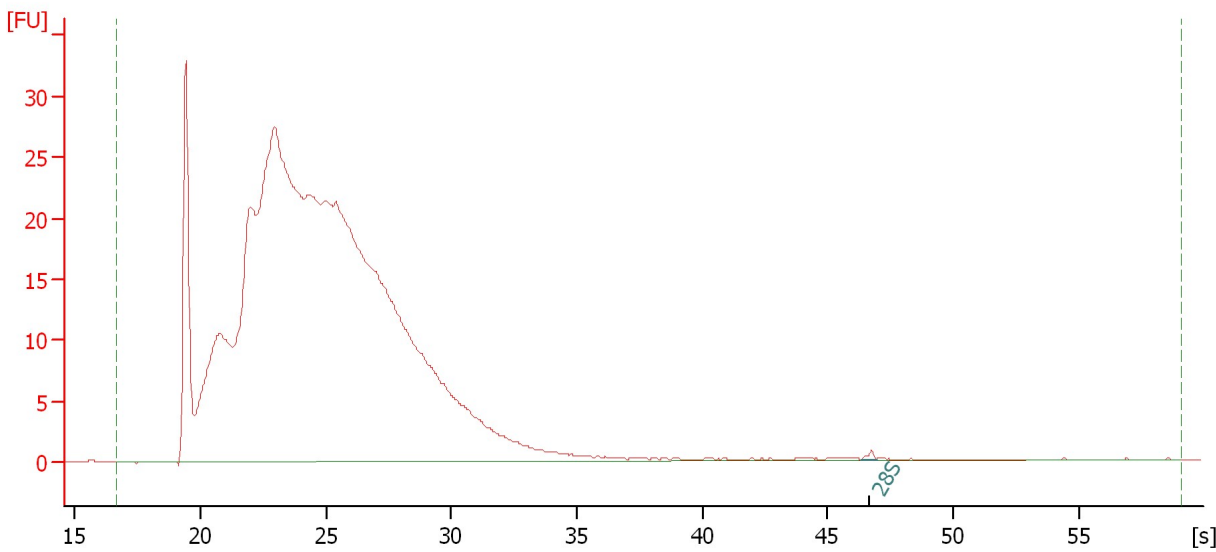
RNA Area:	727.7	RNA Integrity Number (RIN):	1.9 (B.02.08)
RNA Concentration:	4,376 pg/μl	Result Flagging Color:	<span style="background-color: #ccccff; border: 1px solid black; display: inline-block; width: 20px; height: 10px;"></span>
rRNA Ratio [28s / 18s]:	0.0	Result Flagging Label:	RIN: 1.90

Assay Class: Eukaryote Total RNA Pico  
 Data Path: C:\...ents and Settings\Bioanalyzer\2012-12-06\2012-12-06\_002.xad

Created: 12/6/2012 10:16:15 AM  
 Modified: 12/6/2012 10:39:17 AM

**Electropherogram Summary Continued ...**

WTA SHA P6



**Overall Results for sample 9 : WTA SHA P6**

RNA Area:	672.7	RNA Integrity Number (RIN):	2.5 (B.02.08)
RNA Concentration:	4,045 pg/μl	Result Flagging Color:	<span style="background-color: #ccccff; border: 1px solid black; display: inline-block; width: 20px; height: 10px;"></span>
rRNA Ratio [28s / 18s]:	0.0	Result Flagging Label:	RIN: 2.50

**Fragment table for sample 9 : WTA SHA P6**

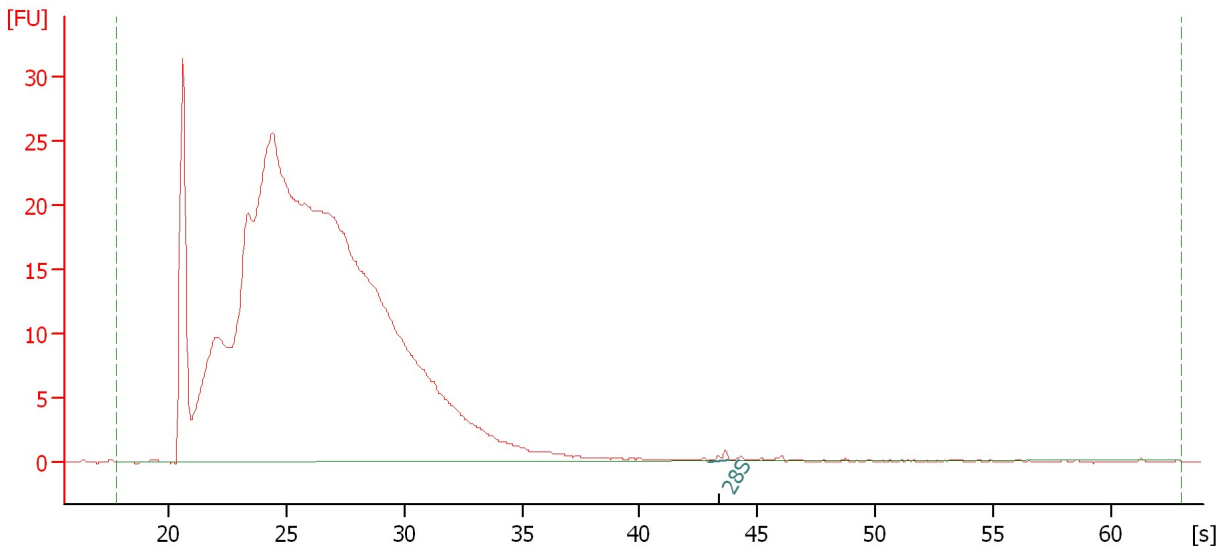
Name	Start Time [s]	End Time [s]	Area	% of total Area
28S	46.31	46.95	0.4	0.1

Assay Class: Eukaryote Total RNA Pico  
Data Path: C:\...ents and Settings\Bioanalyzer\2012-12-06\2012-12-06\_002.xad

Created: 12/6/2012 10:16:15 AM  
Modified: 12/6/2012 10:39:17 AM

**Electropherogram Summary Continued ...**

WTA SHA P7



**Overall Results for sample 10 : WTA SHA P7**

RNA Area:	622.1	RNA Integrity Number (RIN):	2.3 (B.02.08)
RNA Concentration:	3,741 pg/μl	Result Flagging Color:	<span style="background-color: #ccccff; border: 1px solid black; display: inline-block; width: 20px; height: 10px;"></span>
rRNA Ratio [28s / 18s]:	0.0	Result Flagging Label:	RIN: 2.30

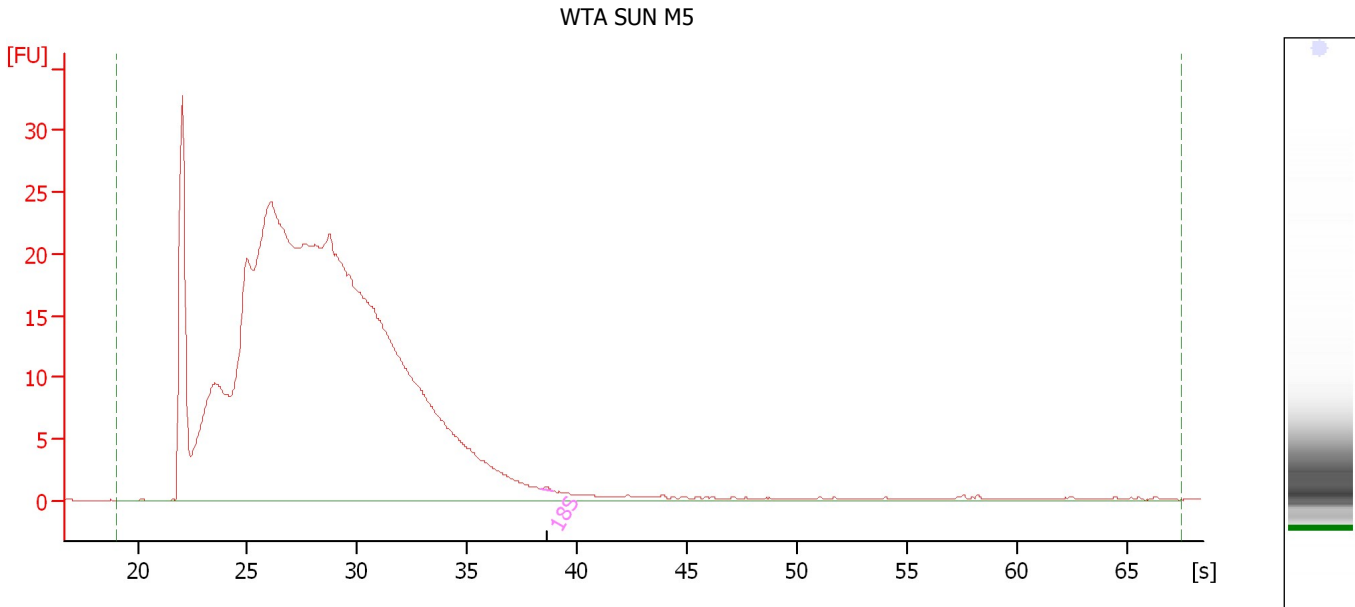
**Fragment table for sample 10 : WTA SHA P7**

Name	Start Time [s]	End Time [s]	Area	% of total Area
28S	42.90	43.82	0.6	0.1

Assay Class: Eukaryote Total RNA Pico  
 Data Path: C:\...ents and Settings\Bioanalyzer\2012-12-06\2012-12-06\_002.xad

Created: 12/6/2012 10:16:15 AM  
 Modified: 12/6/2012 10:39:17 AM

**Electropherogram Summary Continued ...**



**Overall Results for sample 11 : WTA SUN M5**

RNA Area:	670.9	RNA Integrity Number (RIN):	2.3 (B.02.08)
RNA Concentration:	4,035 pg/μl	Result Flagging Color:	<span style="background-color: #ccccff; border: 1px solid black; display: inline-block; width: 20px; height: 10px;"></span>
rRNA Ratio [28s / 18s]:	0.0	Result Flagging Label:	RIN: 2.30

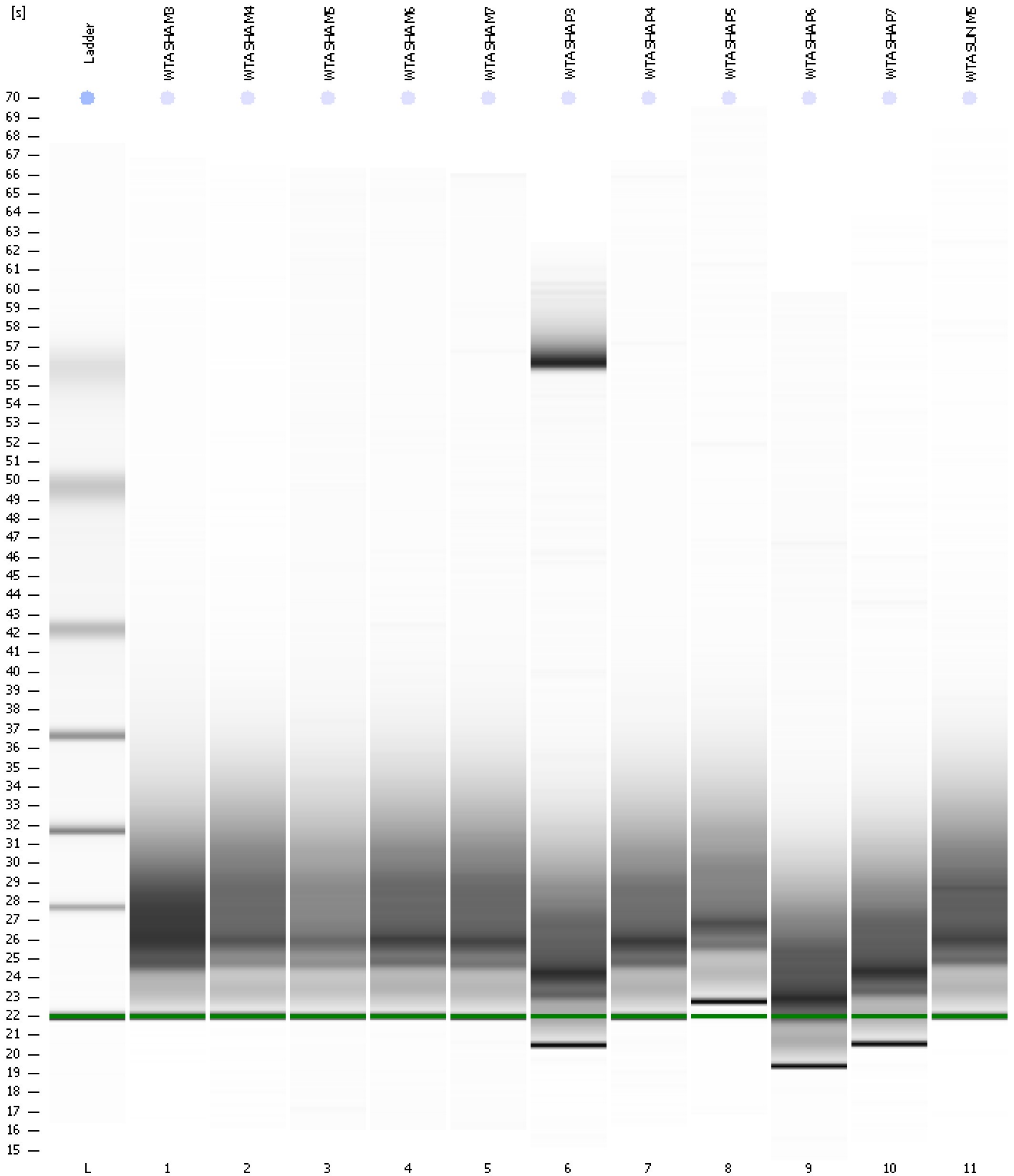
**Fragment table for sample 11 : WTA SUN M5**

Name	Start Time [s]	End Time [s]	Area	% of total Area
18S	38.33	38.87	0.2	0.0

Assay Class: Eukaryote Total RNA Pico  
Data Path: C:\...ents and Settings\Bioanalyzer\2012-12-06\2012-12-06\_002.xad

Created: 12/6/2012 10:16:15 AM  
Modified: 12/6/2012 10:39:17 AM

**Gel Image**





Assay Class: Eukaryote Total RNA Pico  
 Data Path: C:\...ents and Settings\Bioanalyzer\2012-12-06\2012-12-06\_002.xad

Created: 12/6/2012 10:16:15 AM  
 Modified: 12/6/2012 10:39:17 AM

**Run Logbook**

Description	Number	Source	Category	Sub Category	Time	Time Zone	User	Host
Run ended on port 1 (Number of wells acquired: 12)		Instrument	Run		12/6/2012 10:39:07 AM	(GMT --08:00) Pacific Standard Time	UC Davis	D8XSMGH1
Run started on port 1 (File: C:\Documents and Settings\Bioanalyzer\2012-12-06\2012-12-06_002.xad)		Instrument	Run		12/6/2012 10:16:16 AM	(GMT --08:00) Pacific Standard Time	UC Davis	D8XSMGH1
Product Number : G2938B		Instrument	Run		12/6/2012 10:16:16 AM	(GMT --08:00) Pacific Standard Time	UC Davis	D8XSMGH1
Name :		Instrument	Run		12/6/2012 10:16:16 AM	(GMT --08:00) Pacific Standard Time	UC Davis	D8XSMGH1
Vendor : Agilent Technologies		Instrument	Run		12/6/2012 10:16:16 AM	(GMT --08:00) Pacific Standard Time	UC Davis	D8XSMGH1
Serial# : DE13701086		Instrument	Run		12/6/2012 10:16:16 AM	(GMT --08:00) Pacific Standard Time	UC Davis	D8XSMGH1
Firmware : C.01.069		Instrument	Run		12/6/2012 10:16:16 AM	(GMT --08:00) Pacific Standard Time	UC Davis	D8XSMGH1
Cartridge : Electrode		Instrument	Run		12/6/2012 10:16:16 AM	(GMT --08:00) Pacific Standard Time	UC Davis	D8XSMGH1