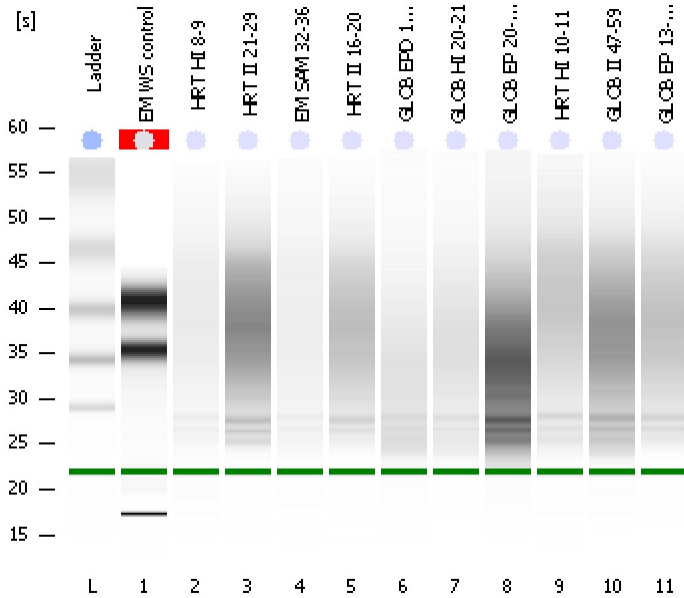


Assay Class: Eukaryote Total RNA Pico
 Data Path: C:\...ents and Settings\Bioanalyzer\2012-12-06\2012-12-06_004.xad

Created: 12/6/2012 11:59:50 AM
 Modified: 12/6/2012 12:22:46 PM

Electrophoresis File Run Summary



Instrument Information:

Instrument Name: DE13701086 Firmware: C.01.069
 Serial#: DE13701086 Type: G2938B

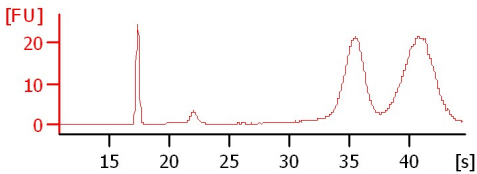
Assay Information:

Assay Origin Path: C:\Program Files\Agilent\2100 bioanalyzer\2100 expert\assays\RNA\Eukaryote Total RNA Pico Series II.xsy
 Assay Class: Eukaryote Total RNA Pico
 Version: 2.6
 Assay Comments: Total RNA Analysis pg sensitivity (Eukaryote)
 © Copyright 2003 - 2009 Agilent Technologies, Inc.

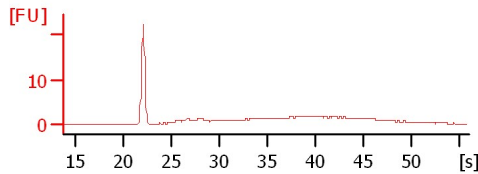
Chip Information:

Chip Lot #:
 Reagent Kit Lot #:
 Chip Comments:

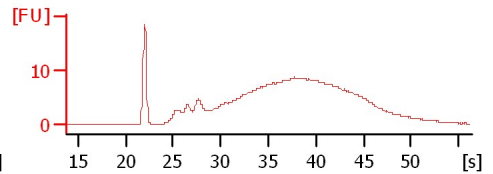
EM WS control
 RIN: N/A



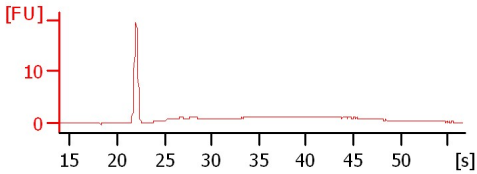
HRT HI 8-9
 RIN: 1



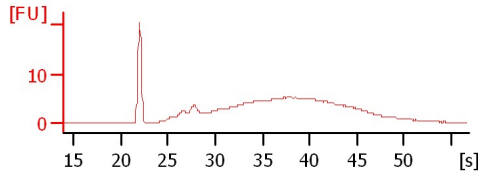
HRT II 21-29
 RIN: 2.80



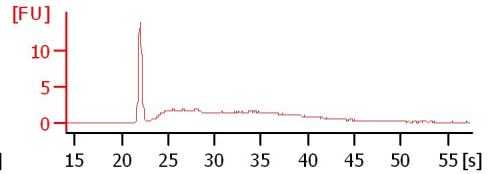
EM SAM 32-36
 RIN: 1



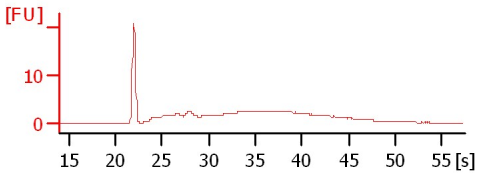
HRT II 16-20
 RIN: 2.60



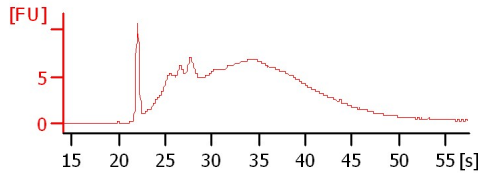
GLOB EPD 1-10
 RIN: 1.40



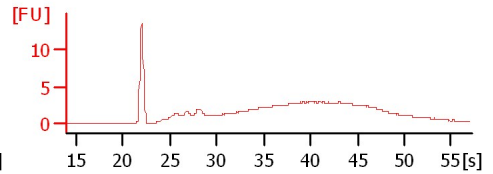
GLOB HI 20-21
 RIN: 1.20



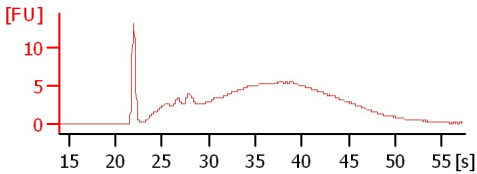
GLOB EP 20-22
 RIN: 2.30



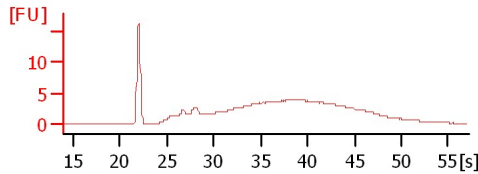
HRT HI 10-11
 RIN: 1.90



GLOB II 47-59
 RIN: 5.30



GLOB EP 13-17
 RIN: 2.10



Assay Class: Eukaryote Total RNA Pico
Data Path: C:\...ents and Settings\Bioanalyzer\2012-12-06\2012-12-06_004.xad

Created: 12/6/2012 11:59:50 AM
Modified: 12/6/2012 12:22:46 PM

Electrophoresis File Run Summary (Chip Summary)

Sample Name	Sample Comment	Status	Result Label	Result Color
EM WS control		✓	RIN N/A	
HRT HI 8-9		✓	RIN:1	
HRT II 21-29		✓	RIN: 2.80	
EM SAM 32-36		✓	RIN:1	
HRT II 16-20		✓	RIN: 2.60	
GLOB EPD 1-10		✓	RIN: 1.40	
GLOB HI 20-21		✓	RIN: 1.20	
GLOB EP 20-22		✓	RIN: 2.30	
HRT HI 10-11		✓	RIN: 1.90	
GLOB II 47-59		✓	RIN: 5.30	
GLOB EP 13-17		✓	RIN: 2.10	
Ladder		✓	All Other Samples	

Chip Lot #

Reagent Kit Lot #

Chip Comments :

Assay Class: Eukaryote Total RNA Pico
Data Path: C:\...ents and Settings\Bioanalyzer\2012-12-06\2012-12-06_004.xad

Created: 12/6/2012 11:59:50 AM
Modified: 12/6/2012 12:22:46 PM

Electrophoresis Assay Details

General Analysis Settings

Number of Available Sample and Ladder Wells (Max.) : 12

Minimum Visible Range [s] : 17

Maximum Visible Range [s] : 70

Start Analysis Time Range [s] : 18

End Analysis Time Range [s] : 69

Ladder Concentration [pg/ μ l] : 1000

Lower Marker Concentration [pg/ μ l] : 0

Upper Marker Concentration [pg/ μ l] : 0

Used Lower Marker for Quantitation

Standard Curve Fit is Logarithmic

Show Data Aligned to Lower Marker

Integrator Settings

Integration Start Time [s] : 18

Integration End Time [s] : 69

Slope Threshold : 0.6

Height Threshold [FU] : 0.5

Area Threshold : 0.2

Width Threshold [s] : 0.3

Baseline Plateau [s] : 6

Filter Settings

Filter Width [s] : 0.5

Polynomial Order : 4

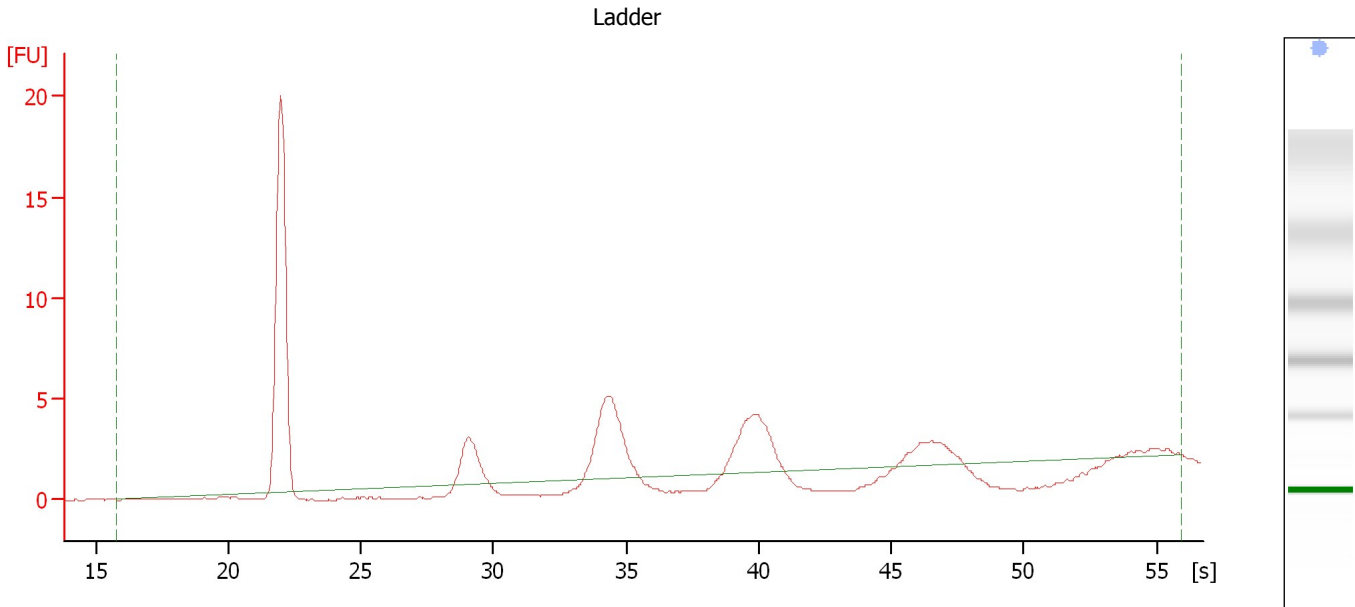
Ladder

Ladder Peak	Size
1	25
2	200
3	500
4	1000
5	2000
6	4000

Assay Class: Eukaryote Total RNA Pico
Data Path: C:\...ents and Settings\Bioanalyzer\2012-12-06\2012-12-06_004.xad

Created: 12/6/2012 11:59:50 AM
Modified: 12/6/2012 12:22:46 PM

Electropherogram Summary



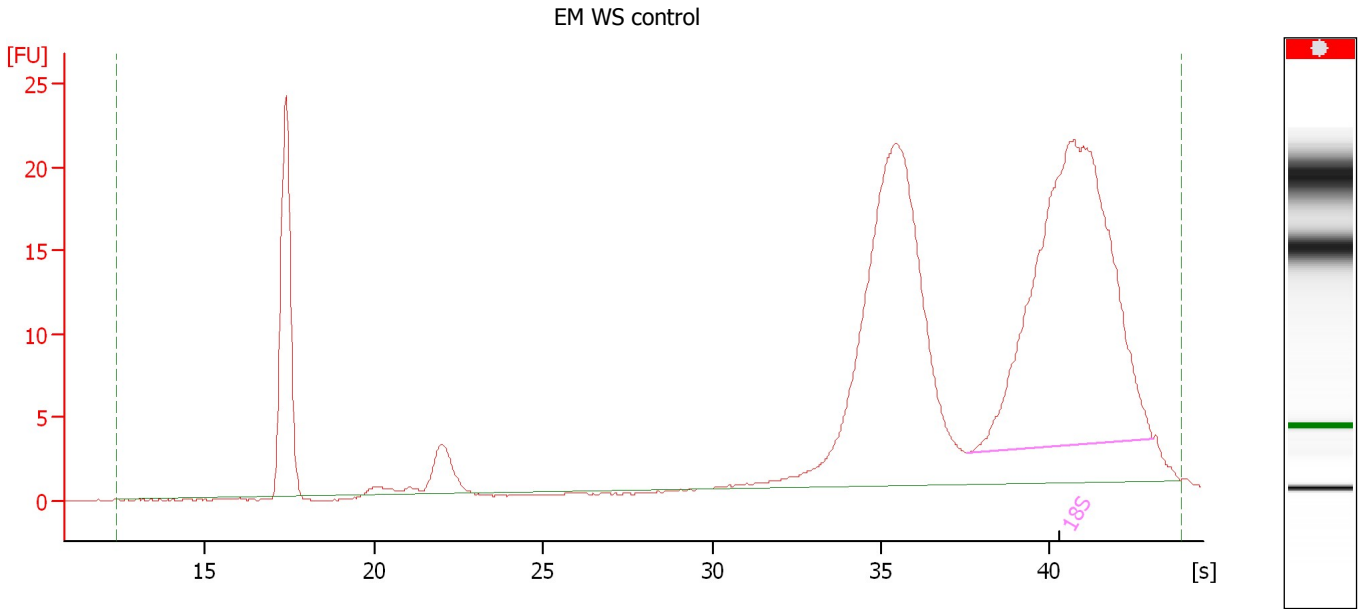
Overall Results for Ladder

RNA Area:	33.1	Result Flagging Color:	
RNA Concentration:	1,000 pg/ μ l	Result Flagging Label:	All Other Samples

Assay Class: Eukaryote Total RNA Pico
Data Path: C:\...ents and Settings\Bioanalyzer\2012-12-06\2012-12-06_004.xad

Created: 12/6/2012 11:59:50 AM
Modified: 12/6/2012 12:22:46 PM

Electropherogram Summary Continued ...



Overall Results for sample 1 : EM WS control

RNA Area: 320.4 RNA Integrity Number (RIN): N/A (B.02.08)
RNA Concentration: 9,677 pg/μl Result Flagging Color:
rRNA Ratio [28s / 18s]: 0.0 Result Flagging Label: RIN N/A

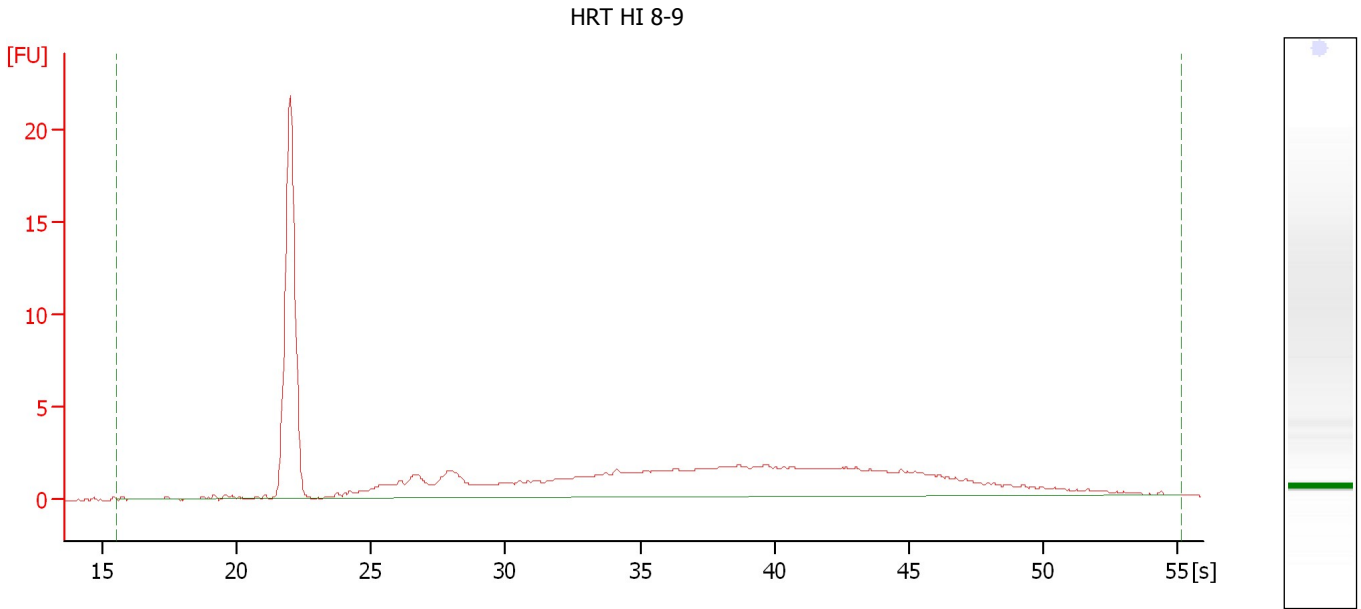
Fragment table for sample 1 : EM WS control

Name	Start Time [s]	End Time [s]	Area	% of total Area
18S	37.55	43.05	120.1	37.5

Assay Class: Eukaryote Total RNA Pico
Data Path: C:\...ents and Settings\Bioanalyzer\2012-12-06\2012-12-06_004.xad

Created: 12/6/2012 11:59:50 AM
Modified: 12/6/2012 12:22:46 PM

Electropherogram Summary Continued ...



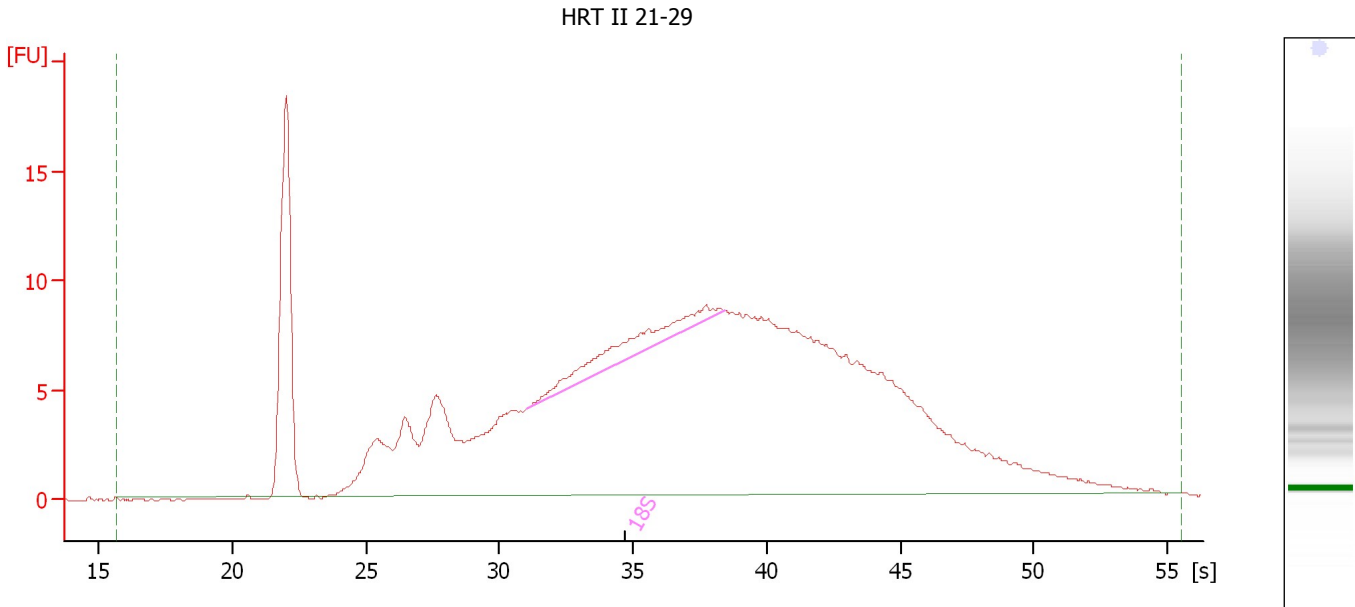
Overall Results for sample 2 : HRT HI 8-9

RNA Area:	82.9	RNA Integrity Number (RIN):	1 (B.02.08)
RNA Concentration:	2,504 pg/μl	Result Flagging Color:	
rRNA Ratio [28s / 18s]:	0.0	Result Flagging Label:	RIN:1

Assay Class: Eukaryote Total RNA Pico
Data Path: C:\...ents and Settings\Bioanalyzer\2012-12-06\2012-12-06_004.xad

Created: 12/6/2012 11:59:50 AM
Modified: 12/6/2012 12:22:46 PM

Electropherogram Summary Continued ...



Overall Results for sample 3 : HRT II 21-29

RNA Area:	351.3	RNA Integrity Number (RIN):	2.8 (B.02.08)
RNA Concentration:	10,611 pg/μl	Result Flagging Color:	
rRNA Ratio [28s / 18s]:	0.0	Result Flagging Label:	RIN: 2.80

Fragment table for sample 3 : HRT II 21-29

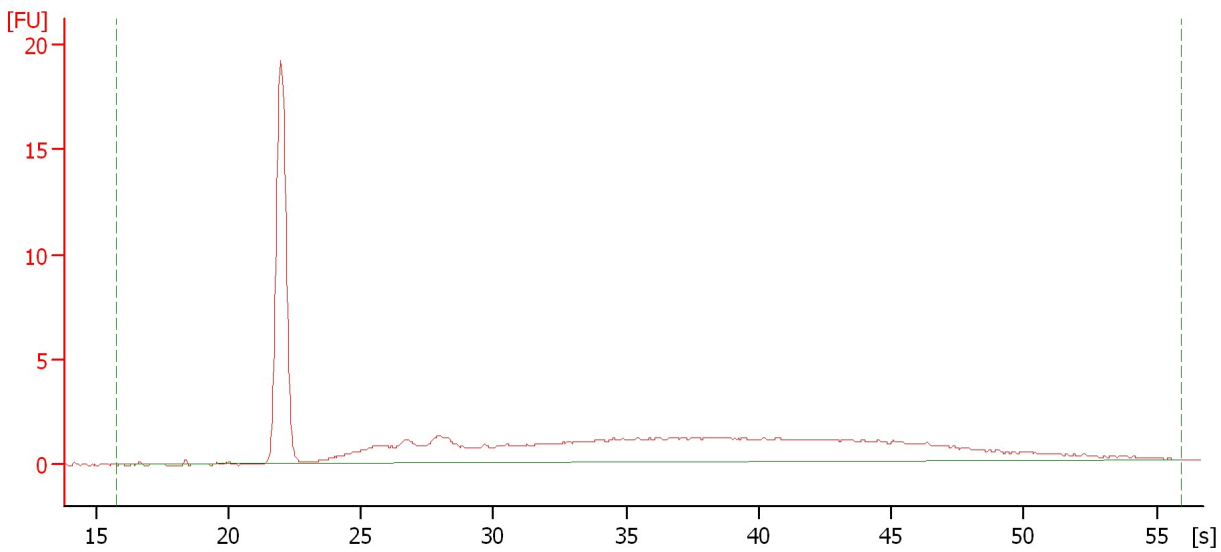
Name	Start Time [s]	End Time [s]	Area	% of total Area
18S	31.01	38.45	11.9	3.4

Assay Class: Eukaryote Total RNA Pico
Data Path: C:\...ents and Settings\Bioanalyzer\2012-12-06\2012-12-06_004.xad

Created: 12/6/2012 11:59:50 AM
Modified: 12/6/2012 12:22:46 PM

Electropherogram Summary Continued ...

EM SAM 32-36



Overall Results for sample 4 : EM SAM 32-36

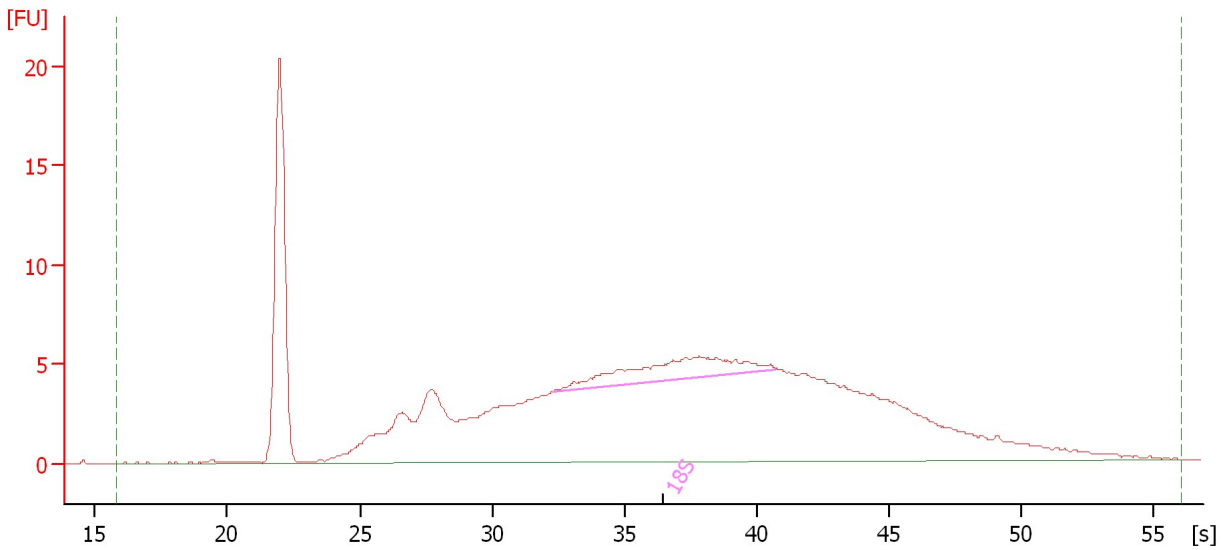
RNA Area:	68.9	RNA Integrity Number (RIN):	1 (B.02.08)
RNA Concentration:	2,081 pg/μl	Result Flagging Color:	
rRNA Ratio [28s / 18s]:	0.0	Result Flagging Label:	RIN:1

Assay Class: Eukaryote Total RNA Pico
Data Path: C:\...ents and Settings\Bioanalyzer\2012-12-06\2012-12-06_004.xad

Created: 12/6/2012 11:59:50 AM
Modified: 12/6/2012 12:22:46 PM

Electropherogram Summary Continued ...

HRT II 16-20



Overall Results for sample 5 : HRT II 16-20

RNA Area:	236.3	RNA Integrity Number (RIN):	2.6 (B.02.08)
RNA Concentration:	7,136 pg/μl	Result Flagging Color:	
rRNA Ratio [28s / 18s]:	0.0	Result Flagging Label:	RIN: 2.60

Fragment table for sample 5 : HRT II 16-20

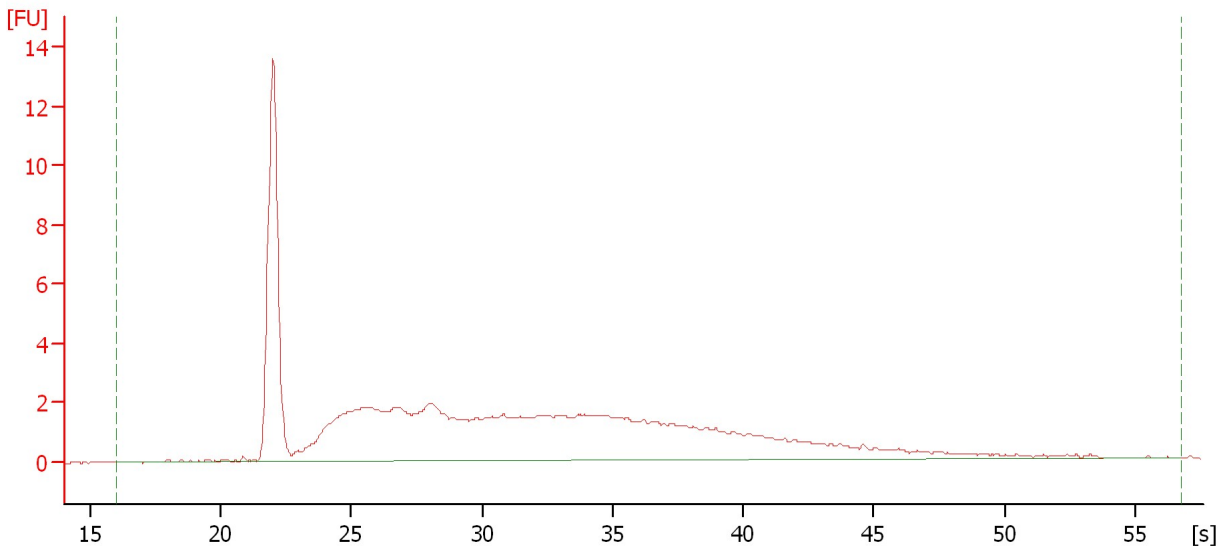
Name	Start Time [s]	End Time [s]	Area	% of total Area
18S	32.27	40.71	14.0	5.9

Assay Class: Eukaryote Total RNA Pico
Data Path: C:\...ents and Settings\Bioanalyzer\2012-12-06\2012-12-06_004.xad

Created: 12/6/2012 11:59:50 AM
Modified: 12/6/2012 12:22:46 PM

Electropherogram Summary Continued ...

GLOB EPD 1-10



Overall Results for sample 6 : GLOB EPD 1-10

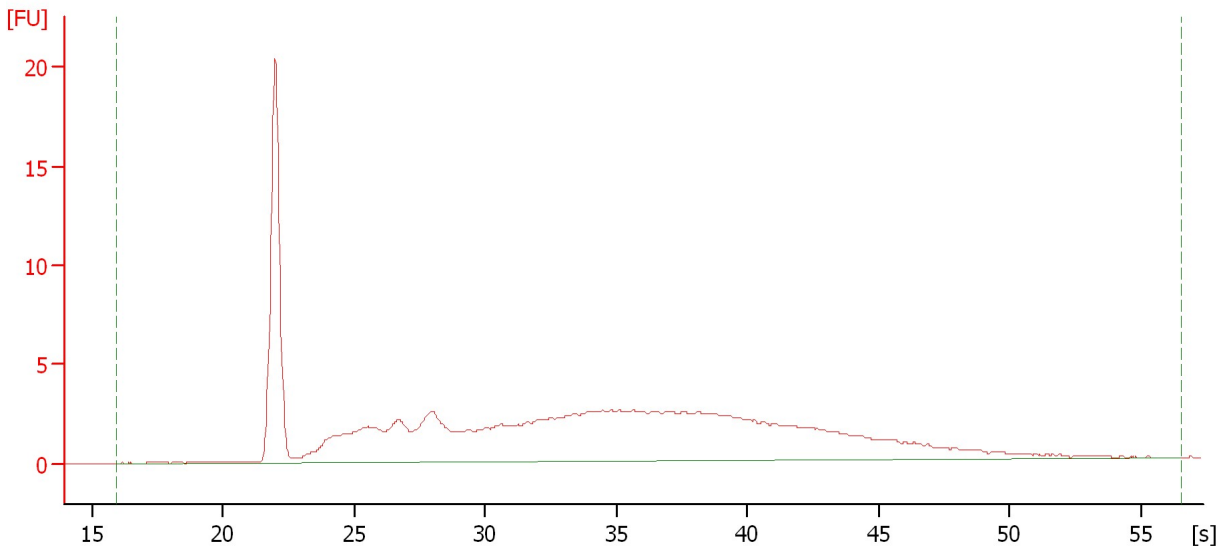
RNA Area:	90.3	RNA Integrity Number (RIN):	1.4 (B.02.08)
RNA Concentration:	2,728 pg/ μ l	Result Flagging Color:	
rRNA Ratio [28s / 18s]:	0.0	Result Flagging Label:	RIN: 1.40

Assay Class: Eukaryote Total RNA Pico
Data Path: C:\...ents and Settings\Bioanalyzer\2012-12-06\2012-12-06_004.xad

Created: 12/6/2012 11:59:50 AM
Modified: 12/6/2012 12:22:46 PM

Electropherogram Summary Continued ...

GLOB HI 20-21



Overall Results for sample 7 : GLOB HI 20-21

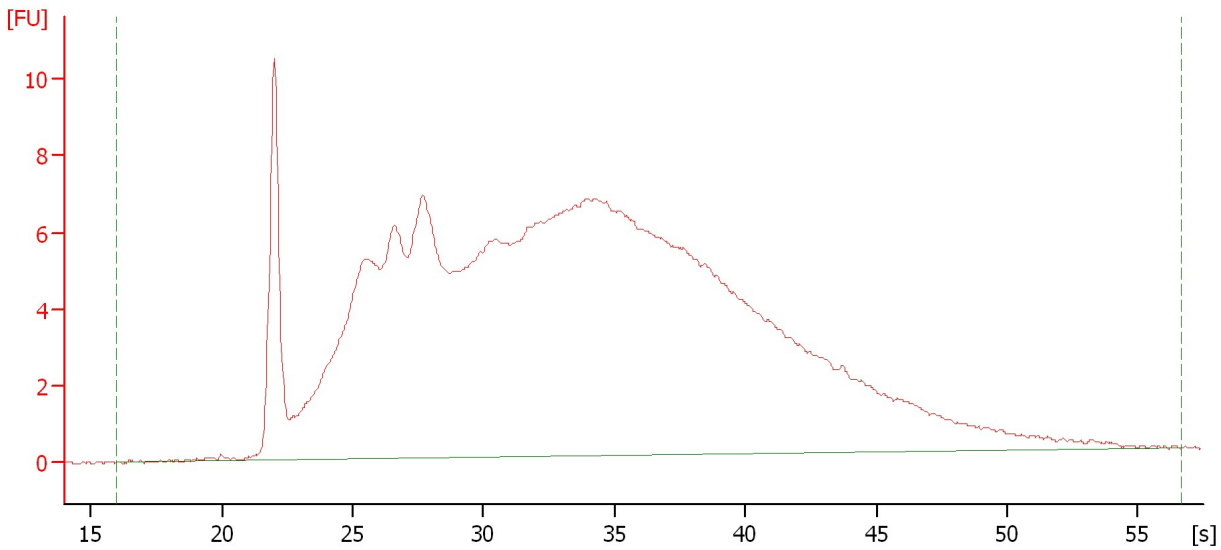
RNA Area:	133.2	RNA Integrity Number (RIN):	1.2 (B.02.08)
RNA Concentration:	4,022 pg/μl	Result Flagging Color:	
rRNA Ratio [28s / 18s]:	0.0	Result Flagging Label:	RIN: 1.20

Assay Class: Eukaryote Total RNA Pico
Data Path: C:\...ents and Settings\Bioanalyzer\2012-12-06\2012-12-06_004.xad

Created: 12/6/2012 11:59:50 AM
Modified: 12/6/2012 12:22:46 PM

Electropherogram Summary Continued ...

GLOB EP 20-22



Overall Results for sample 8 : GLOB EP 20-22

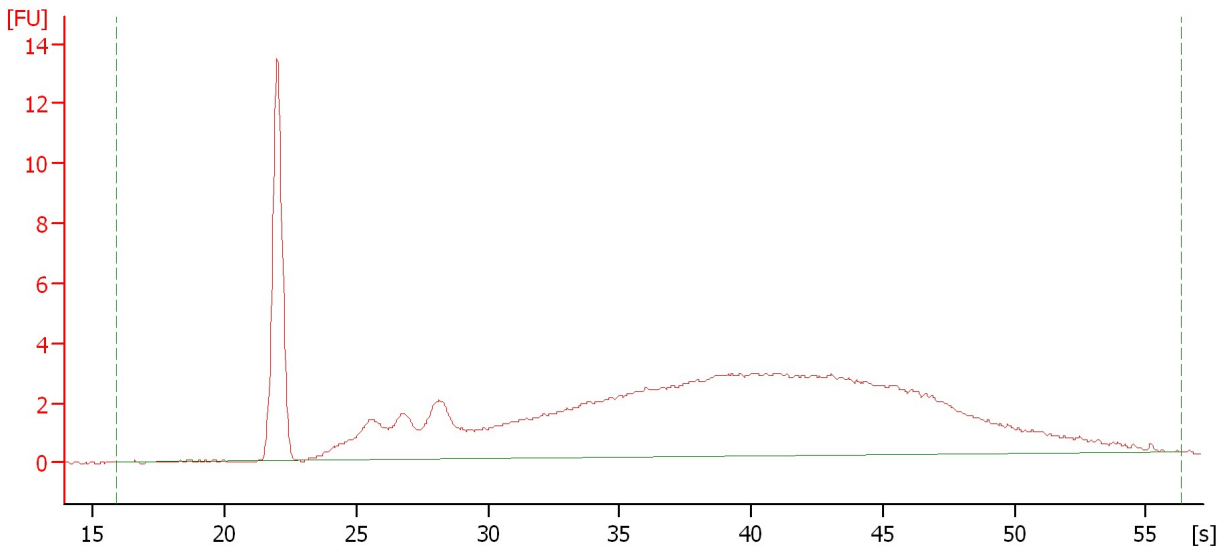
RNA Area:	330.9	RNA Integrity Number (RIN):	2.3 (B.02.08)
RNA Concentration:	9,996 pg/μl	Result Flagging Color:	
rRNA Ratio [28s / 18s]:	0.0	Result Flagging Label:	RIN: 2.30

Assay Class: Eukaryote Total RNA Pico
Data Path: C:\...ents and Settings\Bioanalyzer\2012-12-06\2012-12-06_004.xad

Created: 12/6/2012 11:59:50 AM
Modified: 12/6/2012 12:22:46 PM

Electropherogram Summary Continued ...

HRT HI 10-11



Overall Results for sample 9 : HRT HI 10-11

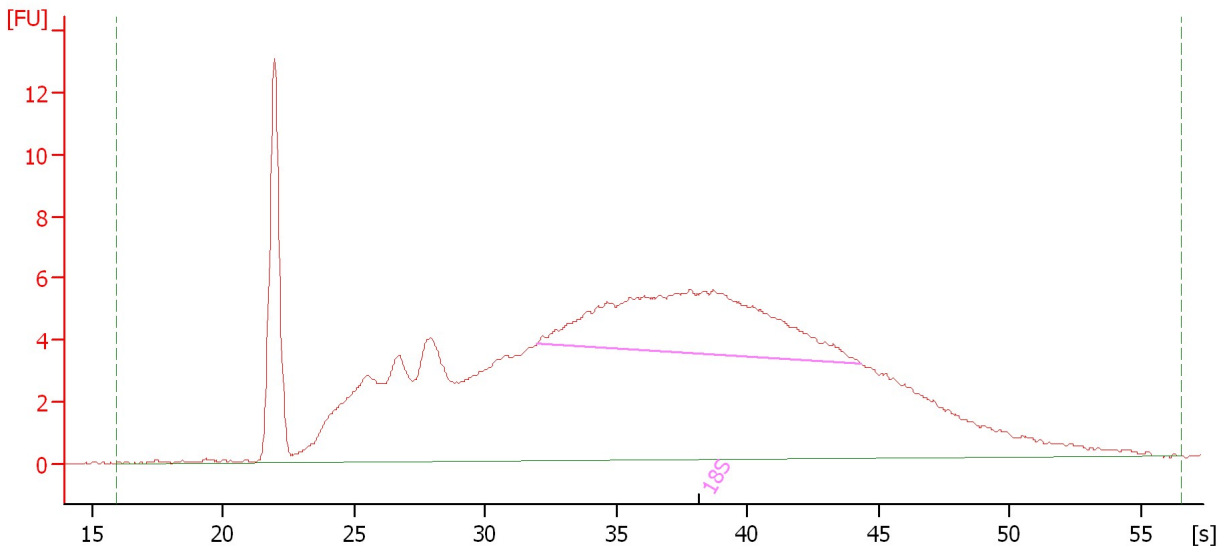
RNA Area:	132.9	RNA Integrity Number (RIN):	1.9 (B.02.08)
RNA Concentration:	4,016 pg/ μ l	Result Flagging Color:	
rRNA Ratio [28s / 18s]:	0.0	Result Flagging Label:	RIN: 1.90

Assay Class: Eukaryote Total RNA Pico
Data Path: C:\...ents and Settings\Bioanalyzer\2012-12-06\2012-12-06_004.xad

Created: 12/6/2012 11:59:50 AM
Modified: 12/6/2012 12:22:46 PM

Electropherogram Summary Continued ...

GLOB II 47-59



Overall Results for sample 10 : GLOB II 47-59

RNA Area: 266.6 RNA Integrity Number (RIN): 5.3 (B.02.08)
RNA Concentration: 8,053 pg/μl Result Flagging Color:
rRNA Ratio [28s / 18s]: 0.0 Result Flagging Label: RIN: 5.30

Fragment table for sample 10 : GLOB II 47-59

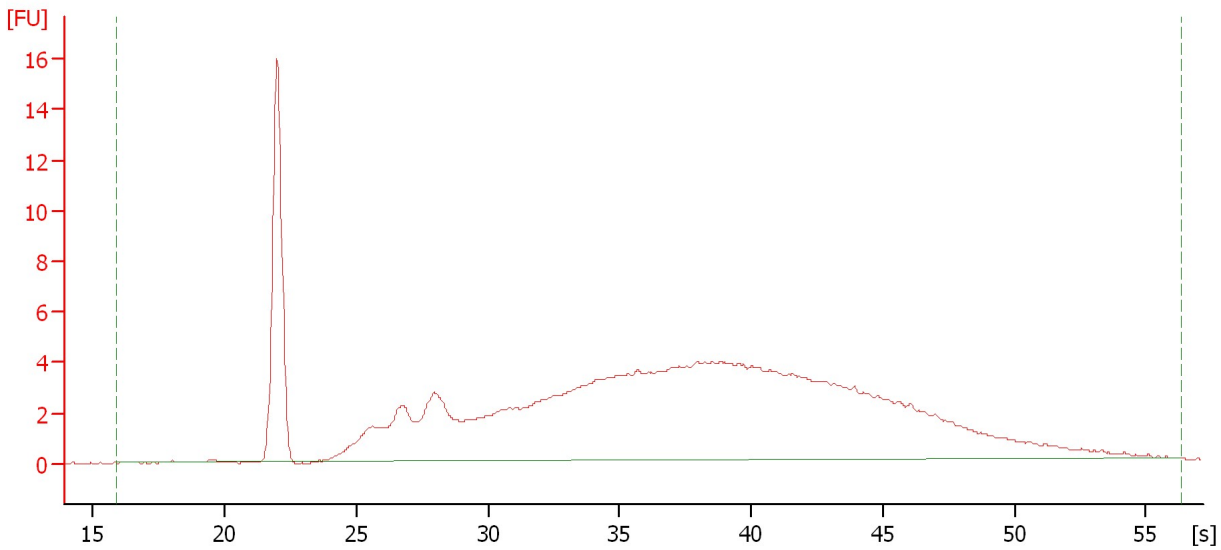
Name	Start Time [s]	End Time [s]	Area	% of total Area
18S	32.00	44.37	41.4	15.5

Assay Class: Eukaryote Total RNA Pico
Data Path: C:\...ents and Settings\Bioanalyzer\2012-12-06\2012-12-06_004.xad

Created: 12/6/2012 11:59:50 AM
Modified: 12/6/2012 12:22:46 PM

Electropherogram Summary Continued ...

GLOB EP 13-17



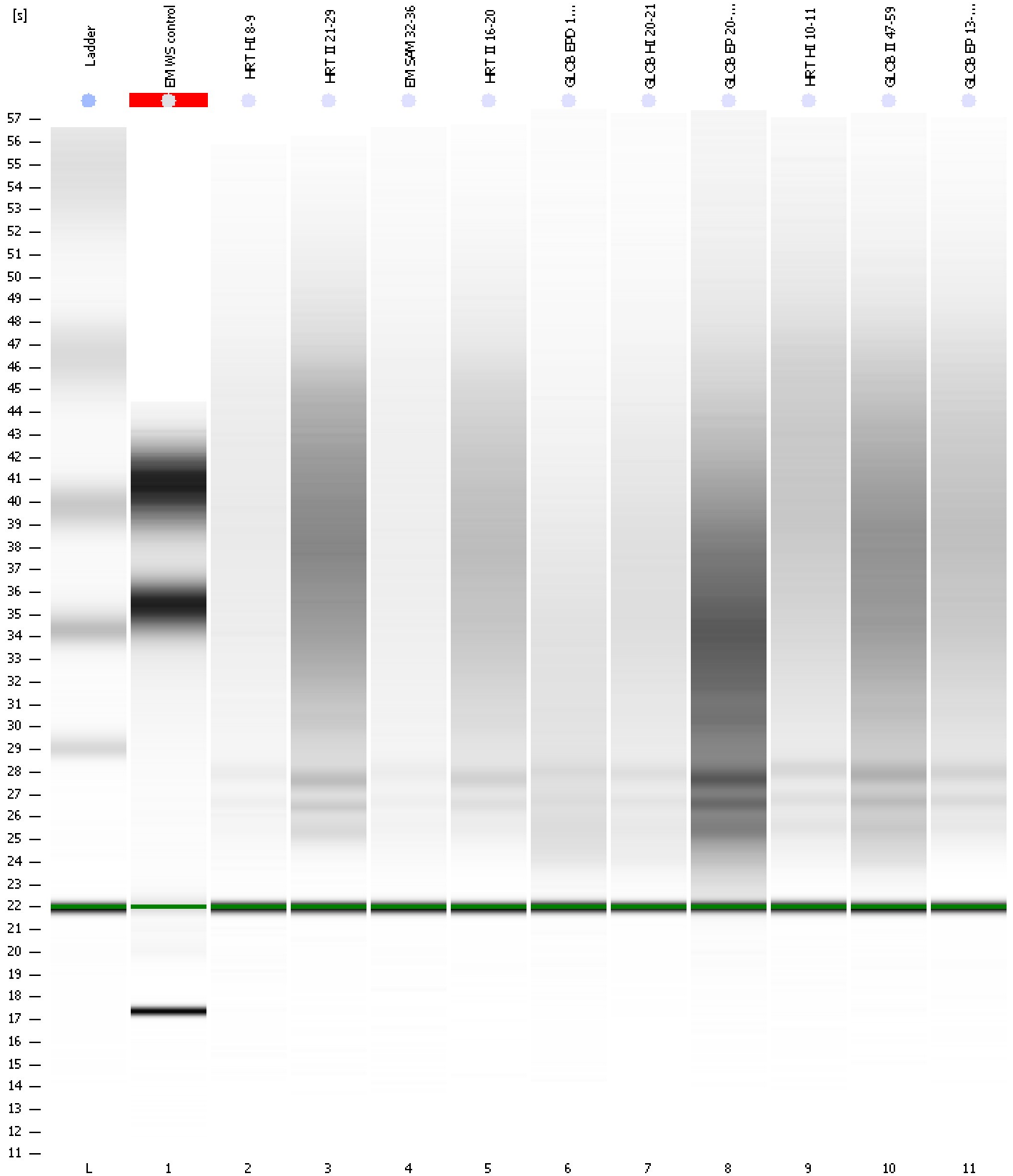
Overall Results for sample 11 : GLOB EP 13-17

RNA Area:	179.0	RNA Integrity Number (RIN):	2.1 (B.02.08)
RNA Concentration:	5,408 pg/μl	Result Flagging Color:	
rRNA Ratio [28s / 18s]:	0.0	Result Flagging Label:	RIN: 2.10

Assay Class: Eukaryote Total RNA Pico
Data Path: C:\...ents and Settings\Bioanalyzer\2012-12-06\2012-12-06_004.xad

Created: 12/6/2012 11:59:50 AM
Modified: 12/6/2012 12:22:46 PM

Gel Image



Assay Class: Eukaryote Total RNA Pico
 Data Path: C:\...ents and Settings\Bioanalyzer\2012-12-06\2012-12-06_004.xad

Created: 12/6/2012 11:59:50 AM
 Modified: 12/6/2012 12:22:46 PM

Run Logbook

Description	Number	Source	Category	Sub Category	Time	Time Zone	User	Host
Run ended on port 1 (Number of wells acquired: 12)		Instrument	Run		12/6/2012 12:22:38 PM	(GMT --08:00) Pacific Standard Time	UC Davis	D8XSMGH1
Run started on port 1 (File: C:\Documents and Settings\Bioanalyzer\2012-12-06\2012-12-06_004.xad)		Instrument	Run		12/6/2012 11:59:50 AM	(GMT --08:00) Pacific Standard Time	UC Davis	D8XSMGH1
Product Number : G2938B		Instrument	Run		12/6/2012 11:59:50 AM	(GMT --08:00) Pacific Standard Time	UC Davis	D8XSMGH1
Name :		Instrument	Run		12/6/2012 11:59:50 AM	(GMT --08:00) Pacific Standard Time	UC Davis	D8XSMGH1
Vendor : Agilent Technologies		Instrument	Run		12/6/2012 11:59:50 AM	(GMT --08:00) Pacific Standard Time	UC Davis	D8XSMGH1
Serial# : DE13701086		Instrument	Run		12/6/2012 11:59:50 AM	(GMT --08:00) Pacific Standard Time	UC Davis	D8XSMGH1
Firmware : C.01.069		Instrument	Run		12/6/2012 11:59:50 AM	(GMT --08:00) Pacific Standard Time	UC Davis	D8XSMGH1
Cartridge : Electrode		Instrument	Run		12/6/2012 11:59:50 AM	(GMT --08:00) Pacific Standard Time	UC Davis	D8XSMGH1