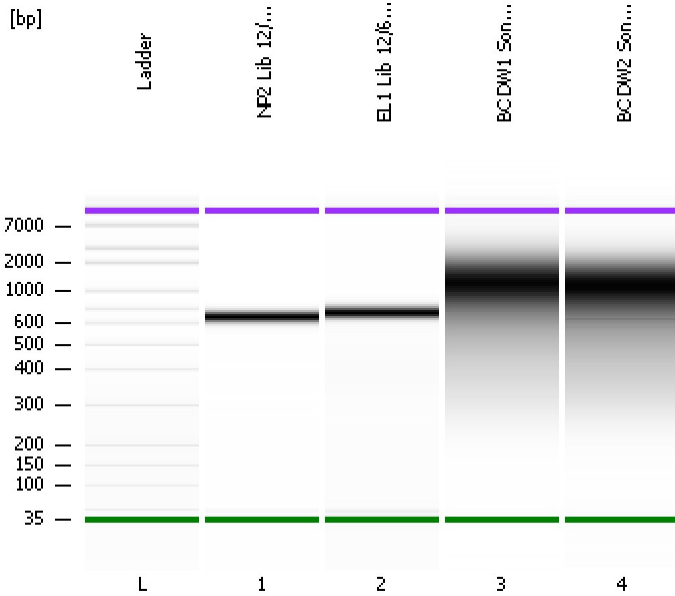


Assay Class: High Sensitivity DNA Assay  
Data Path: C:\...tings\Bioanalyzer\2012-12-07\2012-12-07\_001\_DC\_Lib\_Soni.xad

Created: 12/7/2012 3:15:59 PM  
Modified: 12/7/2012 4:00:22 PM

**Electrophoresis File Run Summary**



Instrument Information:

Instrument Name: DE13701086      Firmware: C.01.069  
Serial#: DE13701086      Type: G2938B

Assay Information:

Assay Origin Path: C:\Program Files\Agilent\2100 bioanalyzer\2100 expert\assays\dsDNA\High Sensitivity DNA.xsy

Assay Class: High Sensitivity DNA Assay  
Version: 1.03  
Assay Comments: Copyright © 2003-2010 Agilent Technologies

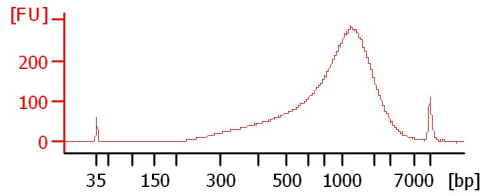
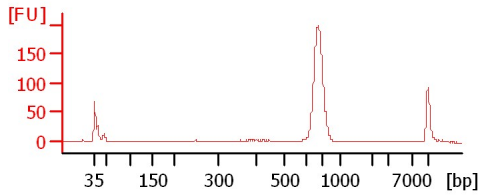
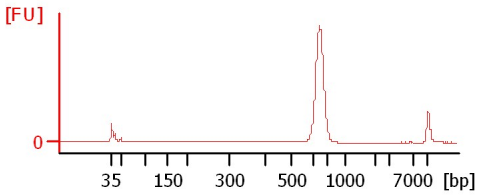
Chip Information:

Chip Lot #:   
Reagent Kit Lot #:   
Chip Comments:

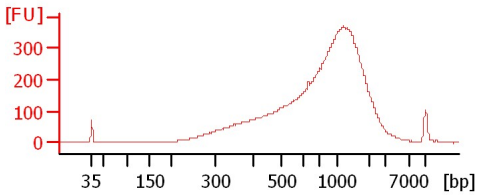
**NP2 Lib 12/6/12**

**EL1 Lib 12/6/12**

**BC DW1 Soni 1:11**



**BC DW2 Soni 1:6**



Assay Class: High Sensitivity DNA Assay  
Data Path: C:\...tings\Bioanalyzer\2012-12-07\2012-12-07\_001\_DC\_Lib\_Soni.xad

Created: 12/7/2012 3:15:59 PM  
Modified: 12/7/2012 4:00:22 PM

**Electrophoresis File Run Summary (Chip Summary)**

| Sample Name      | Sample Comment | Rest. Digest             | Status | Observation | Result Label | Result Color |
|------------------|----------------|--------------------------|--------|-------------|--------------|--------------|
| NP2 Lib 12/6/12  |                | <input type="checkbox"/> |        |             |              |              |
| EL1 Lib 12/6/12  |                | <input type="checkbox"/> |        |             |              |              |
| BC DW1 Soni 1:11 |                | <input type="checkbox"/> |        |             |              |              |
| BC DW2 Soni 1:6  |                | <input type="checkbox"/> |        |             |              |              |
| Ladder           |                | <input type="checkbox"/> |        |             |              |              |

**Chip Lot #****Reagent Kit Lot #****Chip Comments :**

Assay Class: High Sensitivity DNA Assay  
Data Path: C:\...tings\Bioanalyzer\2012-12-07\2012-12-07\_001\_DC\_Lib\_Soni.xad

Created: 12/7/2012 3:15:59 PM  
Modified: 12/7/2012 4:00:22 PM

**Electrophoresis Assay Details**

**General Analysis Settings**

Number of Available Sample and Ladder Wells (Max.) : 12  
Minimum Visible Range [s] : 32  
Maximum Visible Range [s] : 138  
Start Analysis Time Range [s] : 33  
End Analysis Time Range [s] : 137.5  
Ladder Concentration [pg/μl] : 1950  
Uses Standard Area for Ladder Fragments  
Lower Marker Concentration [pg/μl] : 125  
Upper Marker Concentration [pg/μl] : 75  
Used Upper Marker for Quantitation  
Standard Curve Fit is Point to Point  
Show Data Aligned to Lower and Upper Marker

**Integrator Settings**

Integration Start Time [s] : 33.05  
Integration End Time [s] : 137  
Slope Threshold : 0.8  
Height Threshold [FU] : 5  
Area Threshold : 0.1  
Width Threshold [s] : 0.6  
Baseline Plateau [s] : 0.5

**Filter Settings**

Filter Width [s] : 0.5  
Polynomial Order : 4

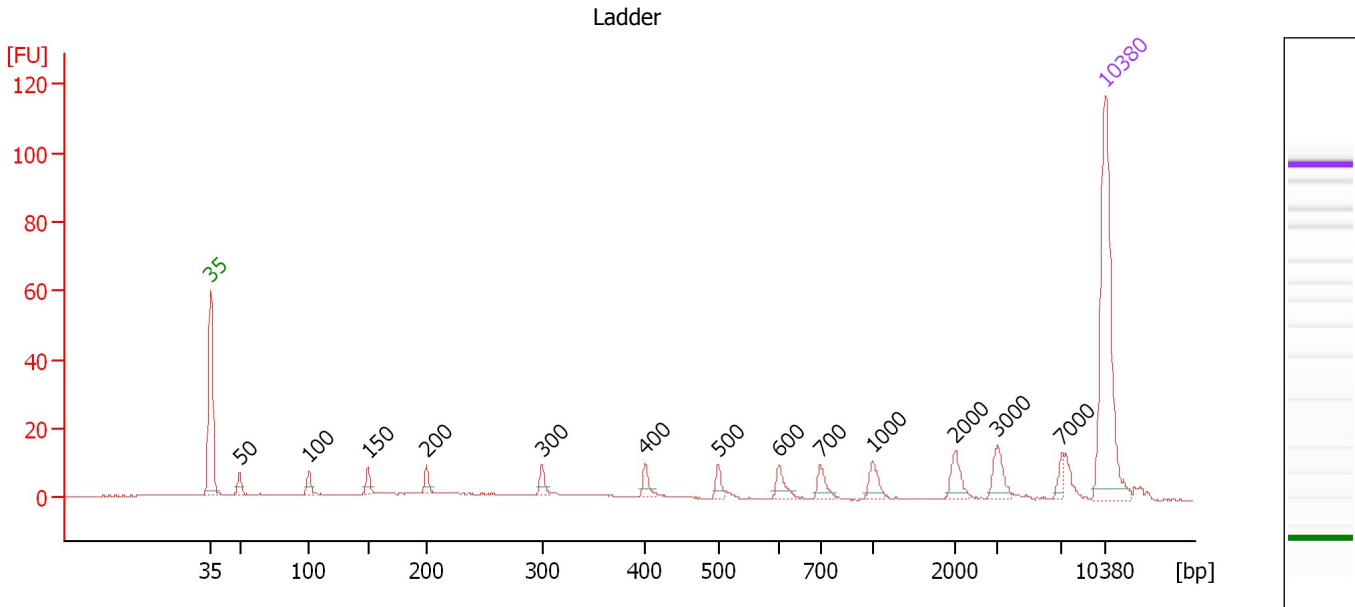
**Ladder**

| Ladder Peak | Size  | Area |
|-------------|-------|------|
| 1           | 35    | 160  |
| 2           | 50    | 210  |
| 3           | 100   | 208  |
| 4           | 150   | 221  |
| 5           | 200   | 242  |
| 6           | 300   | 270  |
| 7           | 400   | 305  |
| 8           | 500   | 306  |
| 9           | 600   | 336  |
| 10          | 700   | 321  |
| 11          | 1000  | 366  |
| 12          | 2000  | 413  |
| 13          | 3000  | 411  |
| 14          | 7000  | 400  |
| 15          | 10380 | 214  |

Assay Class: High Sensitivity DNA Assay  
 Data Path: C:\...tings\Bioanalyzer\2012-12-07\2012-12-07\_001\_DC\_Lib\_Soni.xad

Created: 12/7/2012 3:15:59 PM  
 Modified: 12/7/2012 4:00:22 PM

**Electropherogram Summary**



**Overall Results for Ladder**

Noise: 0.1

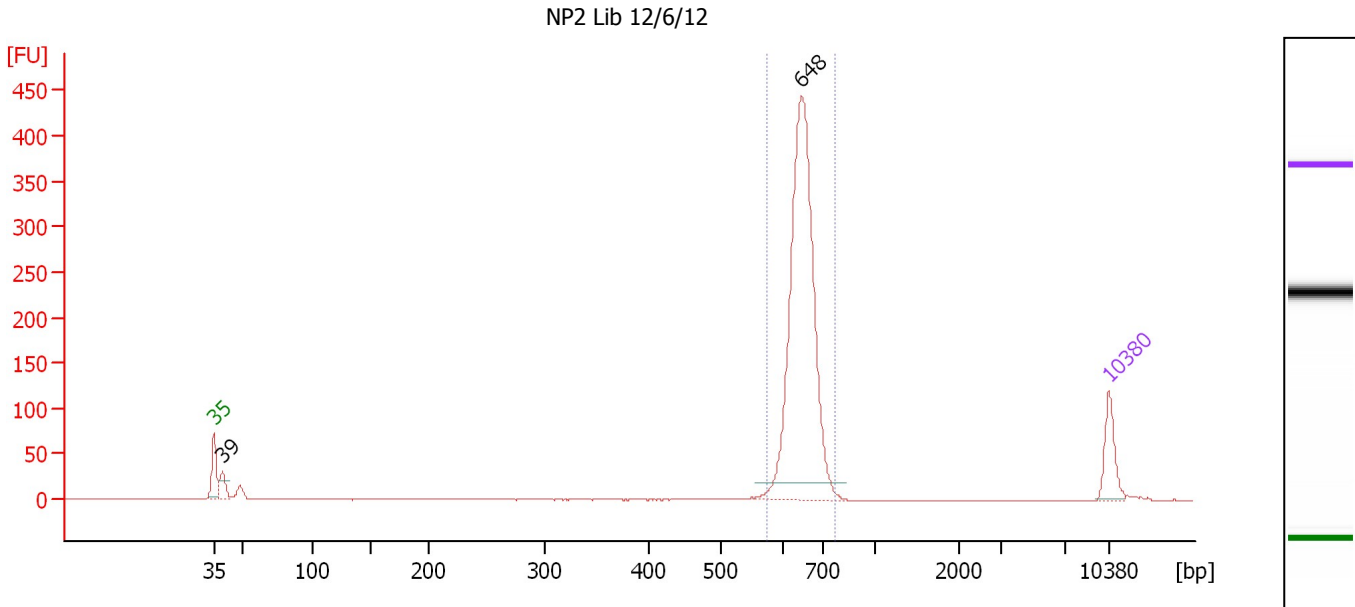
**Peak table for Ladder**

| Peak | Size [bp] | Conc. [pg/μl] | Molarity [pmol/l] | Observations |
|------|-----------|---------------|-------------------|--------------|
| 1    | 35        | 125.00        | 5,411.3           | Lower Marker |
| 2    | 50        | 150.00        | 4,545.5           | Ladder Peak  |
| 3    | 100       | 150.00        | 2,272.7           | Ladder Peak  |
| 4    | 150       | 150.00        | 1,515.2           | Ladder Peak  |
| 5    | 200       | 150.00        | 1,136.4           | Ladder Peak  |
| 6    | 300       | 150.00        | 757.6             | Ladder Peak  |
| 7    | 400       | 150.00        | 568.2             | Ladder Peak  |
| 8    | 500       | 150.00        | 454.5             | Ladder Peak  |
| 9    | 600       | 150.00        | 378.8             | Ladder Peak  |
| 10   | 700       | 150.00        | 324.7             | Ladder Peak  |
| 11   | 1,000     | 150.00        | 227.3             | Ladder Peak  |
| 12   | 2,000     | 150.00        | 113.6             | Ladder Peak  |
| 13   | 3,000     | 150.00        | 75.8              | Ladder Peak  |
| 14   | 7,000     | 150.00        | 32.5              | Ladder Peak  |
| 15   | 10,380    | 75.00         | 10.9              | Upper Marker |

Assay Class: High Sensitivity DNA Assay  
 Data Path: C:\...tings\Bioanalyzer\2012-12-07\2012-12-07\_001\_DC\_Lib\_Soni.xad

Created: 12/7/2012 3:15:59 PM  
 Modified: 12/7/2012 4:00:22 PM

**Electropherogram Summary Continued ...**



**Setpoint Deviations for sample 1 : NP2 Lib 12/6/12**

Height Threshold [FU] : 20

**Overall Results for sample 1 : NP2 Lib 12/6/12**

Number of peaks found: 2                      Corr. Area 1: 1,111.3  
 Noise: 0.2

**Peak table for sample 1 : NP2 Lib 12/6/12**

| Peak | Size [bp] | Conc. [pg/μl] | Molarity [pmol/l] | Observations |
|------|-----------|---------------|-------------------|--------------|
| 1    | 35        | 125.00        | 5,411.3           | Lower Marker |
| 2    | 39        | 65.16         | 2,520.6           |              |
| 3    | 648       | 1,100.02      | 2,573.6           |              |
| 4    | 10,380    | 75.00         | 10.9              | Upper Marker |

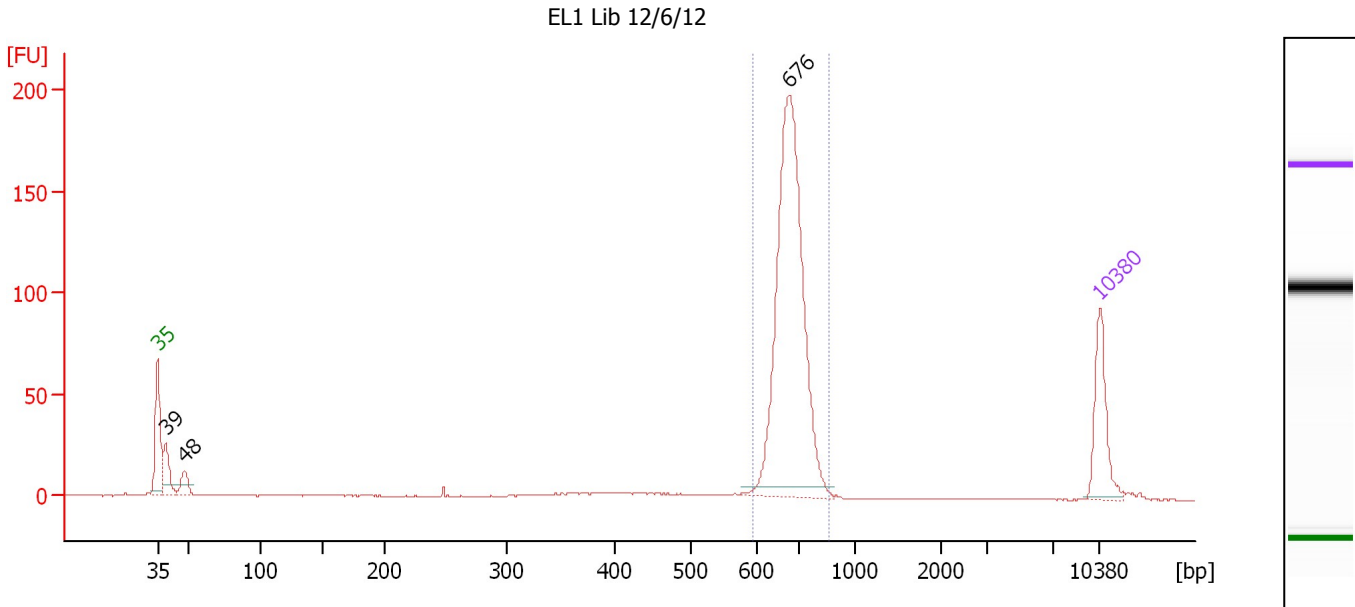
**Region table for sample 1 : NP2 Lib 12/6/12**

| From [bp] | To [bp] | Average Size [bp] | Molarity [pmol/l] | Conc. [pg/μl] | Corr. Area | % of Total | Size distribution in CV [%] | Color |
|-----------|---------|-------------------|-------------------|---------------|------------|------------|-----------------------------|-------|
| 576       | 772     | 648               | 2,559.7           | 1,094.66      | 1,111.3    | 91         | 4.3                         | Blue  |

Assay Class: High Sensitivity DNA Assay  
 Data Path: C:\...tings\Bioanalyzer\2012-12-07\2012-12-07\_001\_DC\_Lib\_Soni.xad

Created: 12/7/2012 3:15:59 PM  
 Modified: 12/7/2012 4:00:22 PM

**Electropherogram Summary Continued ...**



**Overall Results for sample 2 : EL1 Lib 12/6/12**

Number of peaks found: 3                      Corr. Area 1: 527.1  
 Noise: 0.1

**Peak table for sample 2 : EL1 Lib 12/6/12**

| Peak | Size [bp] | Conc. [pg/μl] | Molarity [pmol/l] | Observations |
|------|-----------|---------------|-------------------|--------------|
| 1    | 35        | 125.00        | 5,411.3           | Lower Marker |
| 2    | 39        | 63.14         | 2,453.8           |              |
| 3    | 48        | 32.25         | 1,015.7           |              |
| 4    | 676       | 614.03        | 1,377.3           |              |
| 5    | 10,380    | 75.00         | 10.9              | Upper Marker |

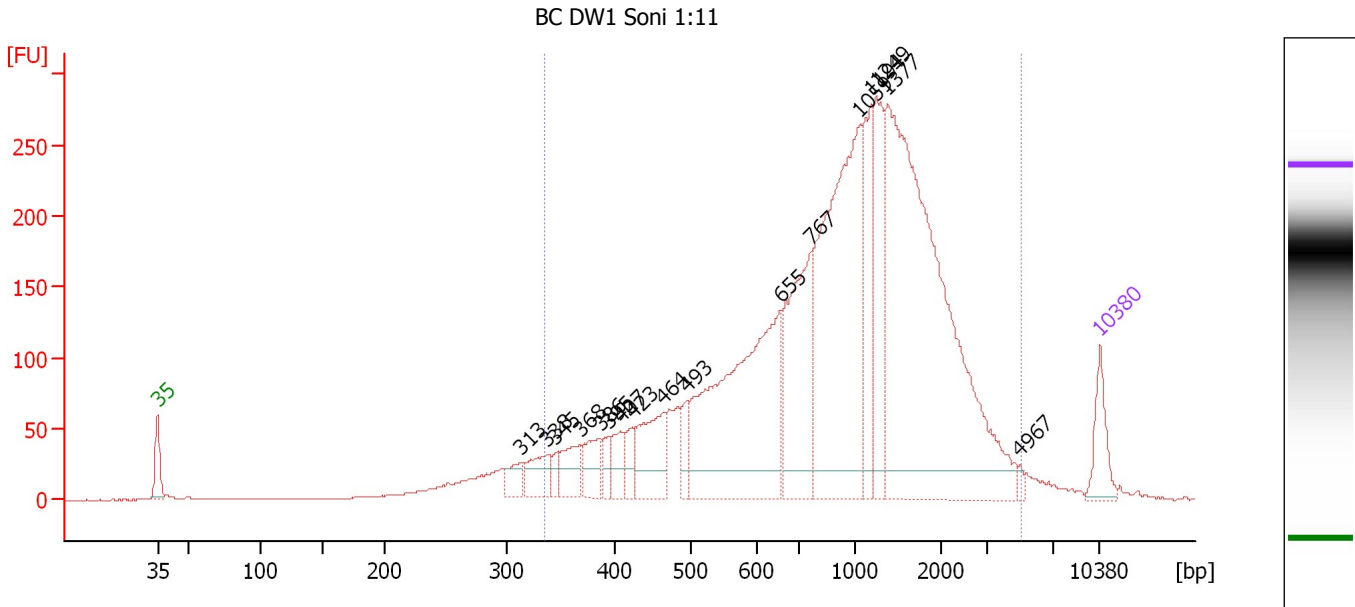
**Region table for sample 2 : EL1 Lib 12/6/12**

| From [bp] | To [bp] | Average Size [bp] | Molarity [pmol/l] | Conc. [pg/μl] | Corr. Area | % of Total | Size distribution in CV [%] | Color |
|-----------|---------|-------------------|-------------------|---------------|------------|------------|-----------------------------|-------|
| 596       | 863     | 684               | 1,365.5           | 614.79        | 527.1      | 79         | 5.8                         | Blue  |

Assay Class: High Sensitivity DNA Assay  
 Data Path: C:\...tings\Bioanalyzer\2012-12-07\2012-12-07\_001\_DC\_Lib\_Soni.xad

Created: 12/7/2012 3:15:59 PM  
 Modified: 12/7/2012 4:00:22 PM

**Electropherogram Summary Continued ...**



**Setpoint Deviations for sample 3 : BC DW1 Soni 1:11**

Height Threshold [FU] : 20

**Overall Results for sample 3 : BC DW1 Soni 1:11**

Number of peaks found: 17                      Corr. Area 1: 4,750.3  
 Noise: 0.2

**Peak table for sample 3 : BC DW1 Soni 1:11**

| Peak | Size [bp] | Conc. [pg/μl] | Molarity [pmol/l] | Observations |
|------|-----------|---------------|-------------------|--------------|
| 1    | 35        | 125.00        | 5,411.3           | Lower Marker |
| 2    | 313       | 61.38         | 297.4             |              |
| 3    | 338       | 99.81         | 447.7             |              |
| 4    | 345       | 31.48         | 138.3             |              |
| 5    | 368       | 97.07         | 400.0             |              |
| 6    | 386       | 92.48         | 362.8             |              |
| 7    | 395       | 46.96         | 180.2             |              |
| 8    | 407       | 71.07         | 264.7             |              |
| 9    | 423       | 48.49         | 173.8             |              |
| 10   | 464       | 184.11        | 601.8             |              |
| 11   | 493       | 63.48         | 194.9             |              |
| 12   | 655       | 806.48        | 1,866.3           |              |
| 13   | 767       | 408.74        | 807.3             |              |
| 14   | 1,059     | 838.21        | 1,199.7           |              |
| 15   | 1,194     | 213.92        | 271.4             |              |
| 16   | 1,249     | 242.78        | 294.6             |              |
| 17   | 1,377     | 1,341.53      | 1,475.7           |              |
| 18   | 4,967     | 10.23         | 3.1               |              |
| 19   | 10,380    | 75.00         | 10.9              | Upper Marker |

Assay Class: High Sensitivity DNA Assay  
Data Path: C:\...tings\Bioanalyzer\2012-12-07\2012-12-07\_001\_DC\_Lib\_Soni.xad

Created: 12/7/2012 3:15:59 PM  
Modified: 12/7/2012 4:00:22 PM

**Electropherogram Summary Continued ...**

... Region table for sample 3 : BC DW1 Soni 1:11

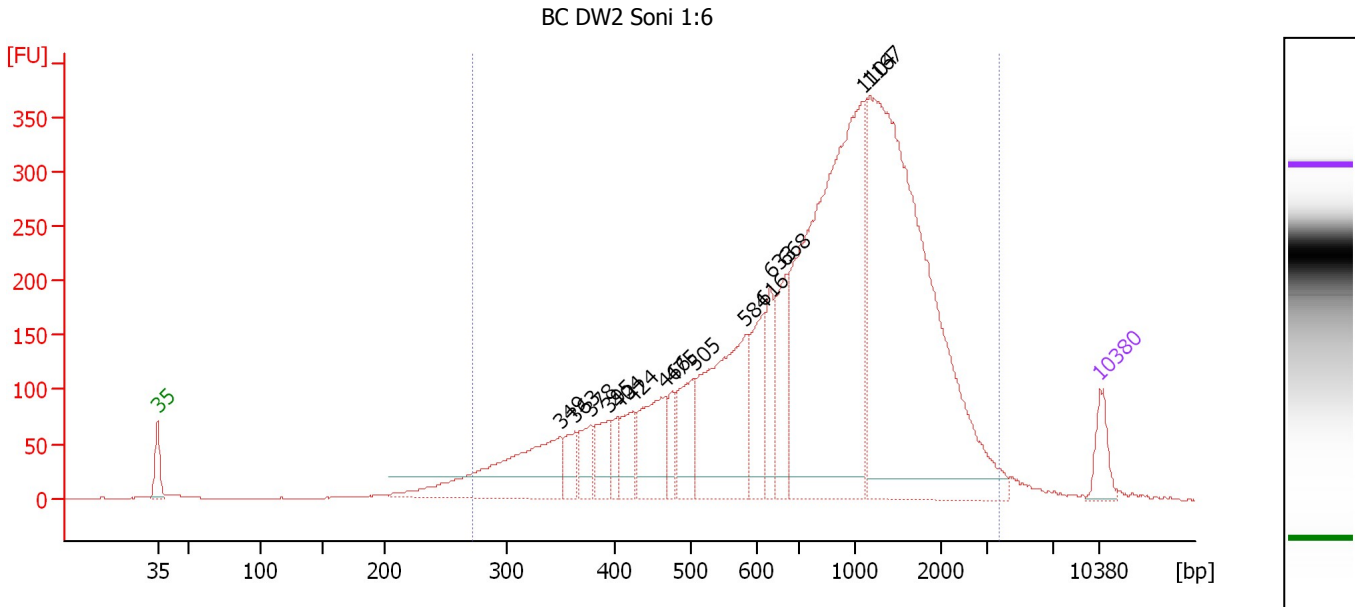
| From [bp] | To [bp] | Average Size [bp] | Molarity [pmol/l] | Conc. [pg/μl] | Corr. Area | % of Total | Size distribution in CV [%] | Color |
|-----------|---------|-------------------|-------------------|---------------|------------|------------|-----------------------------|-------|
| 335       | 5,015   | 1,167             | 9,155.5           | 4,700.94      | 4,750.3    | 93         | 61.0                        | ■     |



Assay Class: High Sensitivity DNA Assay  
 Data Path: C:\...tings\Bioanalyzer\2012-12-07\2012-12-07\_001\_DC\_Lib\_Soni.xad

Created: 12/7/2012 3:15:59 PM  
 Modified: 12/7/2012 4:00:22 PM

**Electropherogram Summary Continued ...**



**Setpoint Deviations for sample 4 : BC DW2 Soni 1:6**

Height Threshold [FU] : 20

**Overall Results for sample 4 : BC DW2 Soni 1:6**

Number of peaks found: 15                      Corr. Area 1: 6,665.0  
 Noise: 0.3

**Peak table for sample 4 : BC DW2 Soni 1:6**

| Peak | Size [bp] | Conc. [pg/µl] | Molarity [pmol/l] | Observations |
|------|-----------|---------------|-------------------|--------------|
| 1    | 35        | 125.00        | 5,411.3           | Lower Marker |
| 2    | 349       | 551.10        | 2,390.3           |              |
| 3    | 363       | 96.98         | 404.4             |              |
| 4    | 378       | 111.68        | 447.7             |              |
| 5    | 395       | 125.18        | 480.5             |              |
| 6    | 404       | 62.78         | 235.2             |              |
| 7    | 424       | 135.43        | 483.8             |              |
| 8    | 466       | 279.42        | 908.5             |              |
| 9    | 475       | 78.32         | 250.0             |              |
| 10   | 505       | 202.97        | 609.3             |              |
| 11   | 584       | 618.38        | 1,605.1           |              |
| 12   | 616       | 220.74        | 542.6             |              |
| 13   | 633       | 146.30        | 350.0             |              |
| 14   | 668       | 218.78        | 495.9             |              |
| 15   | 1,104     | 1,602.20      | 2,198.5           |              |
| 16   | 1,167     | 1,908.12      | 2,477.4           |              |
| 17   | 10,380    | 75.00         | 10.9              | Upper Marker |

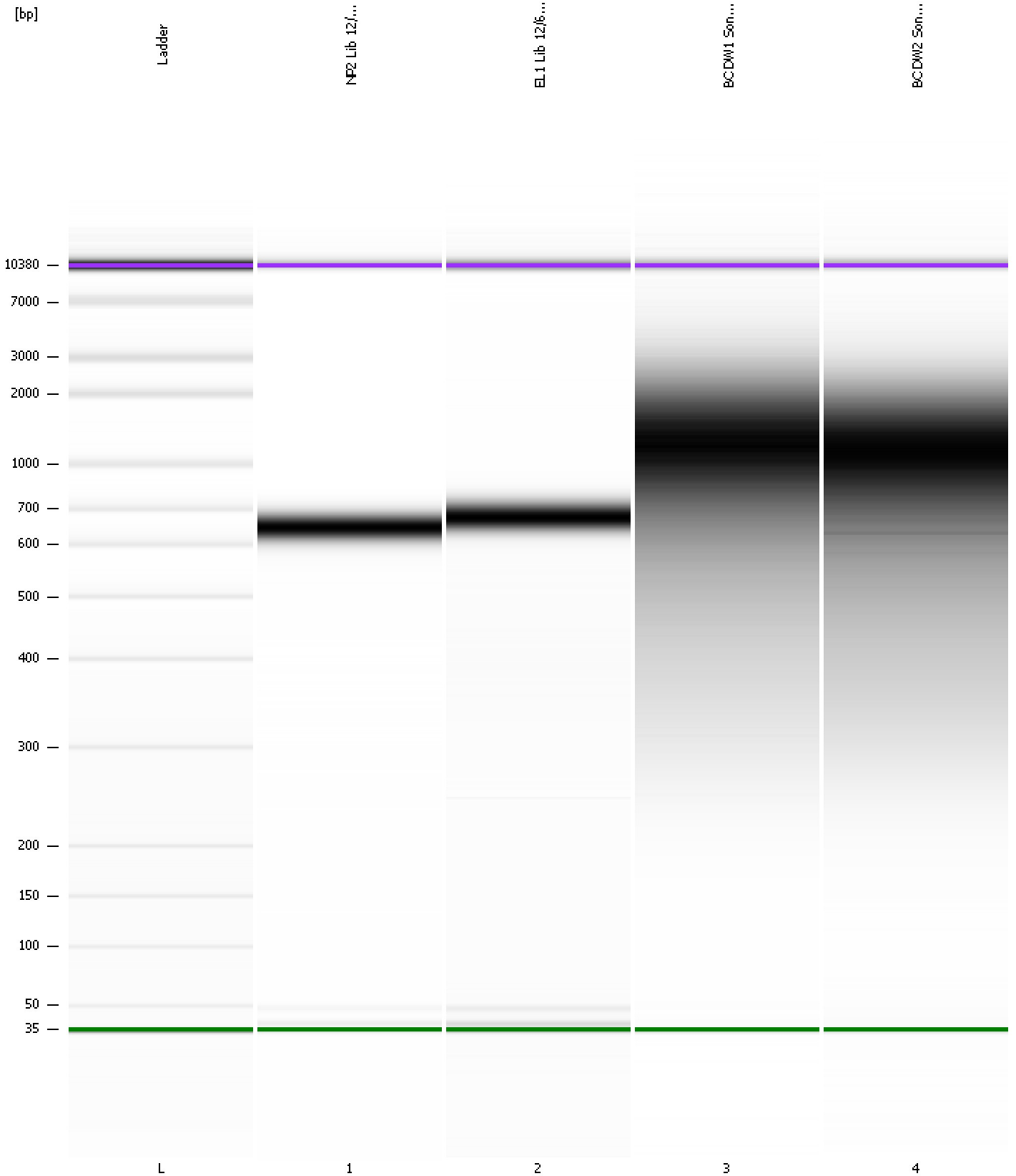
**Region table for sample 4 : BC DW2 Soni 1:6**

| From [bp] | To [bp] | Average Size [bp] | Molarity [pmol/l] | Conc. [pg/µl] | Corr. Area | % of Total | Size distribution in CV [%] | Color |
|-----------|---------|-------------------|-------------------|---------------|------------|------------|-----------------------------|-------|
| 272       | 3,710   | 1,013             | 14,436.4          | 6,434.64      | 6,665.0    | 96         | 57.1                        | Blue  |

Assay Class: High Sensitivity DNA Assay  
Data Path: C:\...tings\Bioanalyzer\2012-12-07\2012-12-07\_001\_DC\_Lib\_Soni.xad

Created: 12/7/2012 3:15:59 PM  
Modified: 12/7/2012 4:00:22 PM

**Gel Image**



Assay Class: High Sensitivity DNA Assay Created: 12/7/2012 3:15:59 PM  
 Data Path: C:\...tings\Bioanalyzer\2012-12-07\2012-12-07\_001\_DC\_Lib\_Soni.xad Modified: 12/7/2012 4:00:22 PM

**Run Logbook**

| Description   | Number | Source     | Category | Sub Category | Time                 | Time Zone                           | User     | Host     |
|---|--------|------------|----------|--------------|----------------------|-------------------------------------|----------|----------|
| Run ended on port 1 (Number of wells acquired: 12)  |        | Instrument | Run      |              | 12/7/2012 3:57:16 PM | (GMT --08:00) Pacific Standard Time | UC Davis | D8XSMGH1 |
| Run started on port 1 (File: C:\Documents and Settings\Bioanalyzer\2012-12-07\2012-12-07_001.xad) |        | Instrument | Run      |              | 12/7/2012 3:16:04 PM | (GMT --08:00) Pacific Standard Time | UC Davis | D8XSMGH1 |
| Product Number : G2938B   |        | Instrument | Run      |              | 12/7/2012 3:16:04 PM | (GMT --08:00) Pacific Standard Time | UC Davis | D8XSMGH1 |
| Name :  |        | Instrument | Run      |              | 12/7/2012 3:16:04 PM | (GMT --08:00) Pacific Standard Time | UC Davis | D8XSMGH1 |
| Vendor : Agilent Technologies   |        | Instrument | Run      |              | 12/7/2012 3:16:04 PM | (GMT --08:00) Pacific Standard Time | UC Davis | D8XSMGH1 |
| Serial# : DE13701086  |        | Instrument | Run      |              | 12/7/2012 3:16:04 PM | (GMT --08:00) Pacific Standard Time | UC Davis | D8XSMGH1 |
| Firmware : C.01.069   |        | Instrument | Run      |              | 12/7/2012 3:16:04 PM | (GMT --08:00) Pacific Standard Time | UC Davis | D8XSMGH1 |
| Cartridge : Electrode   |        | Instrument | Run      |              | 12/7/2012 3:16:04 PM | (GMT --08:00) Pacific Standard Time | UC Davis | D8XSMGH1 |