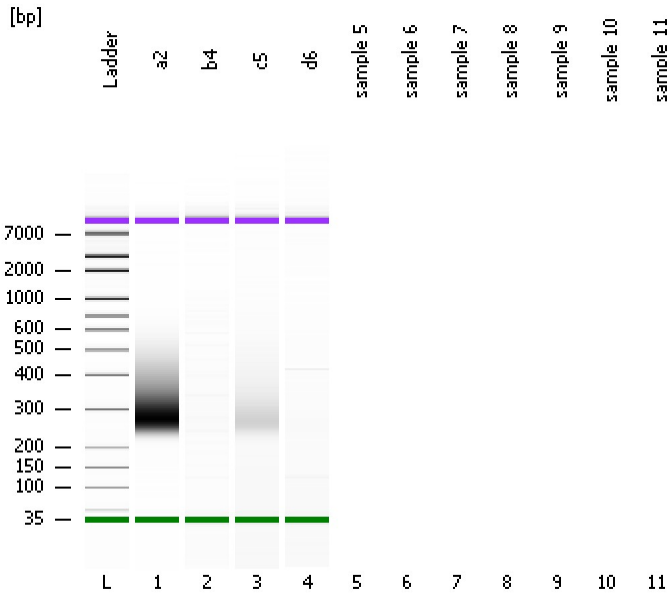


Assay Class: High Sensitivity DNA Assay
Data Path: C:\...ttings\Bioanalyzer\2012-12-06\2012-12-07\2012-12-07_001.xad

Created: 12/7/2012 2:12:42 PM
Modified: 12/7/2012 2:44:53 PM

Electrophoresis File Run Summary



Instrument Information:

Instrument Name: DE13701086 Firmware: C.01.069
Serial#: DE13701086 Type: G2938B

Assay Information:

Assay Origin Path: C:\Program Files\Agilent\2100 bioanalyzer\2100 expert\assays\dsDNA\High Sensitivity DNA.xsy
Assay Class: High Sensitivity DNA Assay
Version: 1.03
Assay Comments: Copyright © 2003-2010 Agilent Technologies

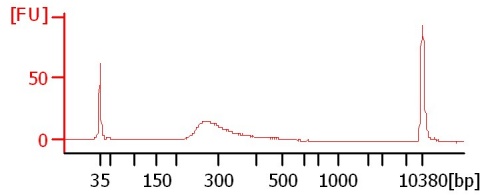
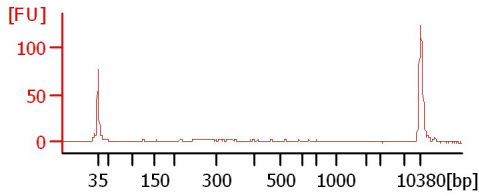
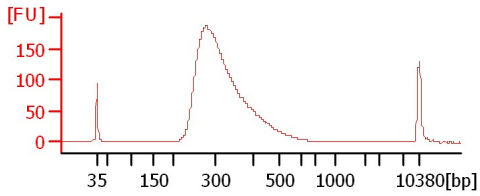
Chip Information:

Chip Lot #:
Reagent Kit Lot #:
Chip Comments:

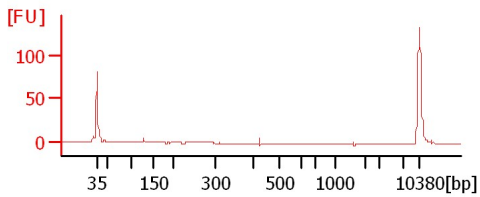
a2

b4

c5



d6



Assay Class: High Sensitivity DNA Assay
Data Path: C:\...ttings\Bioanalyzer\2012-12-06\2012-12-07\2012-12-07_001.xad

Created: 12/7/2012 2:12:42 PM
Modified: 12/7/2012 2:44:53 PM

Electrophoresis File Run Summary (Chip Summary)

| Sample Name | Sample Comment | Rest. Digest | Status | Observation | Result Label | Result Color |
|-------------|----------------|--------------------------|--------|-------------|--------------|--------------|
| a2 | | <input type="checkbox"/> | ✓ | | | |
| b4 | | <input type="checkbox"/> | ✓ | | | |
| c5 | | <input type="checkbox"/> | ✓ | | | |
| d6 | | <input type="checkbox"/> | ✓ | | | |
| sample 5 | | <input type="checkbox"/> | | | | |
| sample 6 | | <input type="checkbox"/> | | | | |
| sample 7 | | <input type="checkbox"/> | | | | |
| sample 8 | | <input type="checkbox"/> | | | | |
| sample 9 | | <input type="checkbox"/> | | | | |
| sample 10 | | <input type="checkbox"/> | | | | |
| sample 11 | | <input type="checkbox"/> | | | | |
| Ladder | | <input type="checkbox"/> | ✓ | | | |

Chip Lot #

Reagent Kit Lot #

Chip Comments :

Assay Class: High Sensitivity DNA Assay
Data Path: C:\...ttings\Bioanalyzer\2012-12-06\2012-12-07\2012-12-07_001.xad

Created: 12/7/2012 2:12:42 PM
Modified: 12/7/2012 2:44:53 PM

Electrophoresis Assay Details

General Analysis Settings

Number of Available Sample and Ladder Wells (Max.) : 12
Minimum Visible Range [s] : 32
Maximum Visible Range [s] : 138
Start Analysis Time Range [s] : 33
End Analysis Time Range [s] : 137.5
Ladder Concentration [pg/μl] : 1950
Uses Standard Area for Ladder Fragments
Lower Marker Concentration [pg/μl] : 125
Upper Marker Concentration [pg/μl] : 75
Used Upper Marker for Quantitation
Standard Curve Fit is Point to Point
Show Data Aligned to Lower and Upper Marker

Integrator Settings

Integration Start Time [s] : 33.05
Integration End Time [s] : 137
Slope Threshold : 0.8
Height Threshold [FU] : 5
Area Threshold : 0.1
Width Threshold [s] : 0.6
Baseline Plateau [s] : 0.5

Filter Settings

Filter Width [s] : 0.5
Polynomial Order : 4

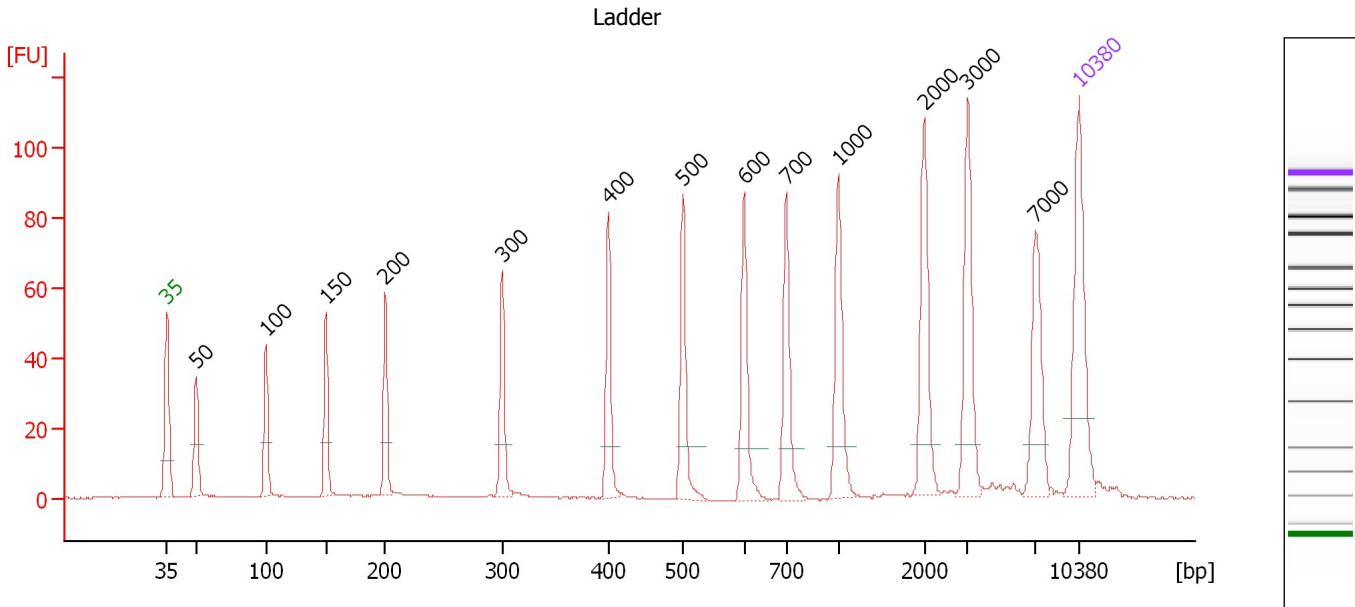
Ladder

| Ladder Peak | Size | Area |
|-------------|-------|------|
| 1 | 35 | 160 |
| 2 | 50 | 210 |
| 3 | 100 | 208 |
| 4 | 150 | 221 |
| 5 | 200 | 242 |
| 6 | 300 | 270 |
| 7 | 400 | 305 |
| 8 | 500 | 306 |
| 9 | 600 | 336 |
| 10 | 700 | 321 |
| 11 | 1000 | 366 |
| 12 | 2000 | 413 |
| 13 | 3000 | 411 |
| 14 | 7000 | 400 |
| 15 | 10380 | 214 |

Assay Class: High Sensitivity DNA Assay
 Data Path: C:\...ttings\Bioanalyzer\2012-12-06\2012-12-07\2012-12-07_001.xad

Created: 12/7/2012 2:12:42 PM
 Modified: 12/7/2012 2:44:53 PM

Electropherogram Summary



Overall Results for Ladder

Noise: 0.1

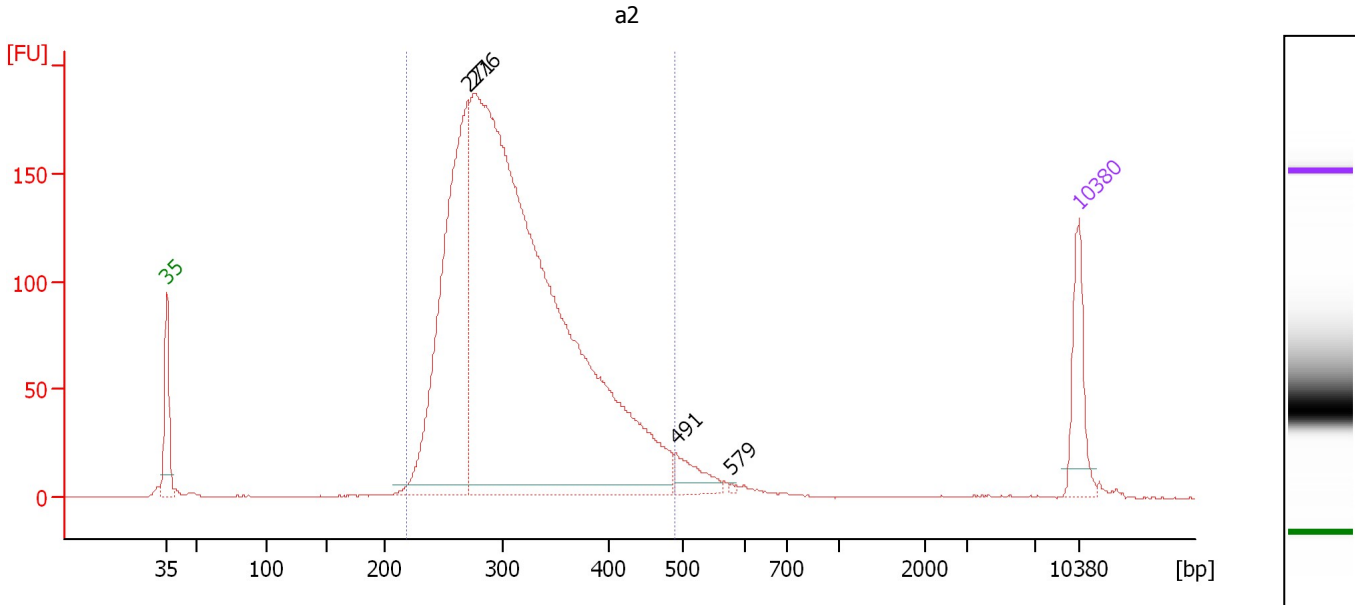
Peak table for Ladder

| Peak | Size [bp] | Conc. [pg/μl] | Molarity [pmol/l] | Observations |
|------|-----------|---------------|-------------------|--------------|
| 1 | 35 | 125.00 | 5,411.3 | Lower Marker |
| 2 | 50 | 150.00 | 4,545.5 | Ladder Peak |
| 3 | 100 | 150.00 | 2,272.7 | Ladder Peak |
| 4 | 150 | 150.00 | 1,515.2 | Ladder Peak |
| 5 | 200 | 150.00 | 1,136.4 | Ladder Peak |
| 6 | 300 | 150.00 | 757.6 | Ladder Peak |
| 7 | 400 | 150.00 | 568.2 | Ladder Peak |
| 8 | 500 | 150.00 | 454.5 | Ladder Peak |
| 9 | 600 | 150.00 | 378.8 | Ladder Peak |
| 10 | 700 | 150.00 | 324.7 | Ladder Peak |
| 11 | 1,000 | 150.00 | 227.3 | Ladder Peak |
| 12 | 2,000 | 150.00 | 113.6 | Ladder Peak |
| 13 | 3,000 | 150.00 | 75.8 | Ladder Peak |
| 14 | 7,000 | 150.00 | 32.5 | Ladder Peak |
| 15 | 10,380 | 75.00 | 10.9 | Upper Marker |

Assay Class: High Sensitivity DNA Assay
 Data Path: C:\...ttings\Bioanalyzer\2012-12-06\2012-12-07\2012-12-07_001.xad

Created: 12/7/2012 2:12:42 PM
 Modified: 12/7/2012 2:44:53 PM

Electropherogram Summary Continued ...



Overall Results for sample 1 : a2

Number of peaks found: 4 Corr. Area 1: 2,790.4
 Noise: 0.2

Peak table for sample 1 : a2

| Peak | Size [bp] | Conc. [pg/μl] | Molarity [pmol/l] | Observations |
|------|-----------|---------------|-------------------|--------------|
| 1 | 35 | 125.00 | 5,411.3 | Lower Marker |
| 2 | 271 | 734.53 | 4,113.9 | |
| 3 | 276 | 2,315.48 | 12,692.5 | |
| 4 | 491 | 50.24 | 155.1 | |
| 5 | 579 | 2.58 | 6.7 | |
| 6 | 10,380 | 75.00 | 10.9 | Upper Marker |

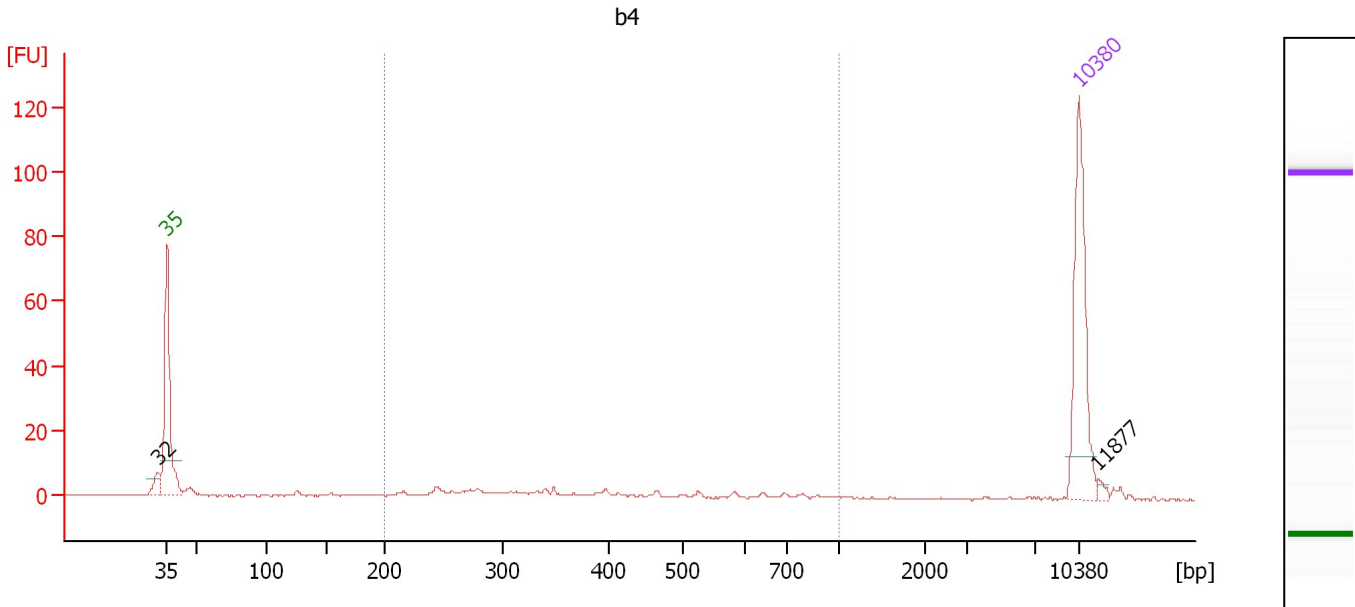
Region table for sample 1 : a2

| From [bp] | To [bp] | Average Size [bp] | Molarity [pmol/l] | Conc. [pg/μl] | Corr. Area | % of Total | Size distribution in CV [%] | Color |
|-----------|---------|-------------------|-------------------|---------------|------------|------------|-----------------------------|-------|
| 218 | 490 | 316 | 14,159.6 | 2,841.42 | 2,790.4 | 94 | 17.8 | Blue |

Assay Class: High Sensitivity DNA Assay
 Data Path: C:\...ttings\Bioanalyzer\2012-12-06\2012-12-07\2012-12-07_001.xad

Created: 12/7/2012 2:12:42 PM
 Modified: 12/7/2012 2:44:53 PM

Electropherogram Summary Continued ...



Overall Results for sample 2 : b4

Number of peaks found: 2 Corr. Area 1: 50.9
 Noise: 0.1

Peak table for sample 2 : b4

| Peak | Size [bp] | Conc. [pg/μl] | Molarity [pmol/l] | Observations |
|------|-----------|---------------|-------------------|--------------|
| 1 | 32 | 0.00 | 0.0 | |
| 2 | 35 | 125.00 | 5,411.3 | Lower Marker |
| 3 | 10,380 | 75.00 | 10.9 | Upper Marker |
| 4 | 11,877 | 0.00 | 0.0 | |

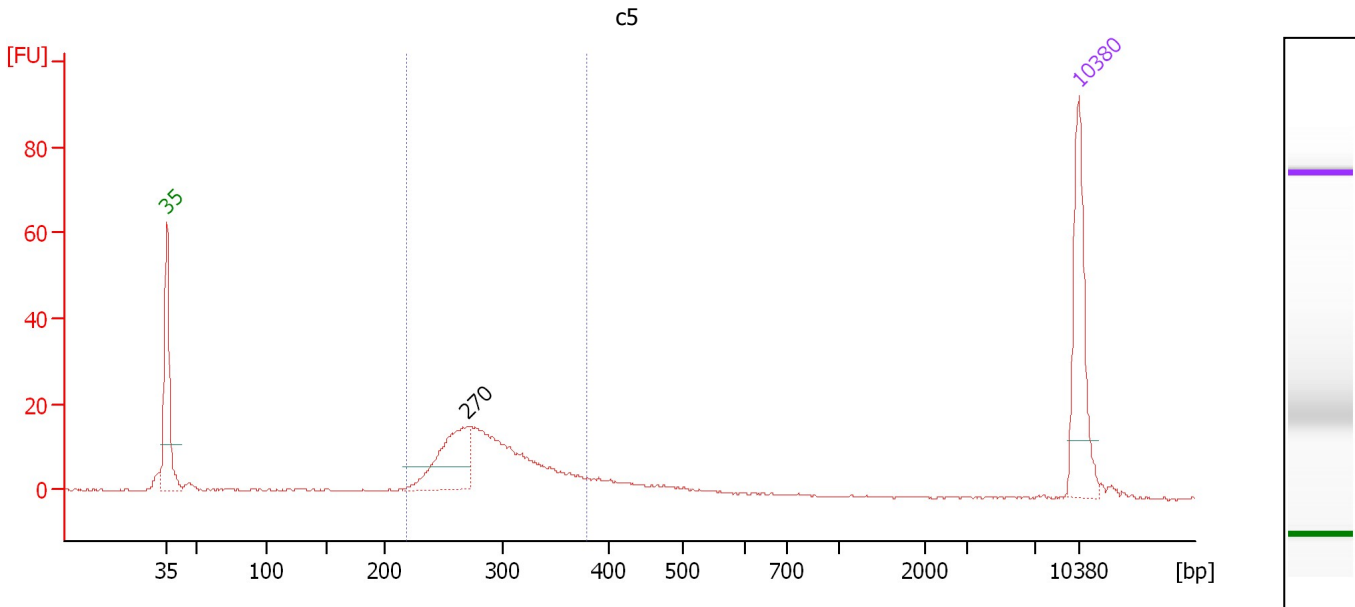
Region table for sample 2 : b4

| From [bp] | To [bp] | Average Size [bp] | Molarity [pmol/l] | Conc. [pg/μl] | Corr. Area | % of Total | Size distribution in CV [%] | Color |
|-----------|---------|-------------------|-------------------|---------------|------------|------------|-----------------------------|-------|
| 200 | 1,000 | 404 | 244.9 | 53.60 | 50.9 | 55 | 42.5 | Blue |

Assay Class: High Sensitivity DNA Assay
 Data Path: C:\...ttings\Bioanalyzer\2012-12-06\2012-12-07\2012-12-07_001.xad

Created: 12/7/2012 2:12:42 PM
 Modified: 12/7/2012 2:44:53 PM

Electropherogram Summary Continued ...



Overall Results for sample 3 : c5

Number of peaks found: 1 Corr. Area 1: 186.9
 Noise: 0.2

Peak table for sample 3 : c5

| Peak | Size [bp] | Conc. [pg/μl] | Molarity [pmol/l] | Observations |
|------|-----------|---------------|-------------------|--------------|
| 1 | 35 | 125.00 | 5,411.3 | Lower Marker |
| 2 | 270 | 92.72 | 520.5 | |
| 3 | 10,380 | 75.00 | 10.9 | Upper Marker |

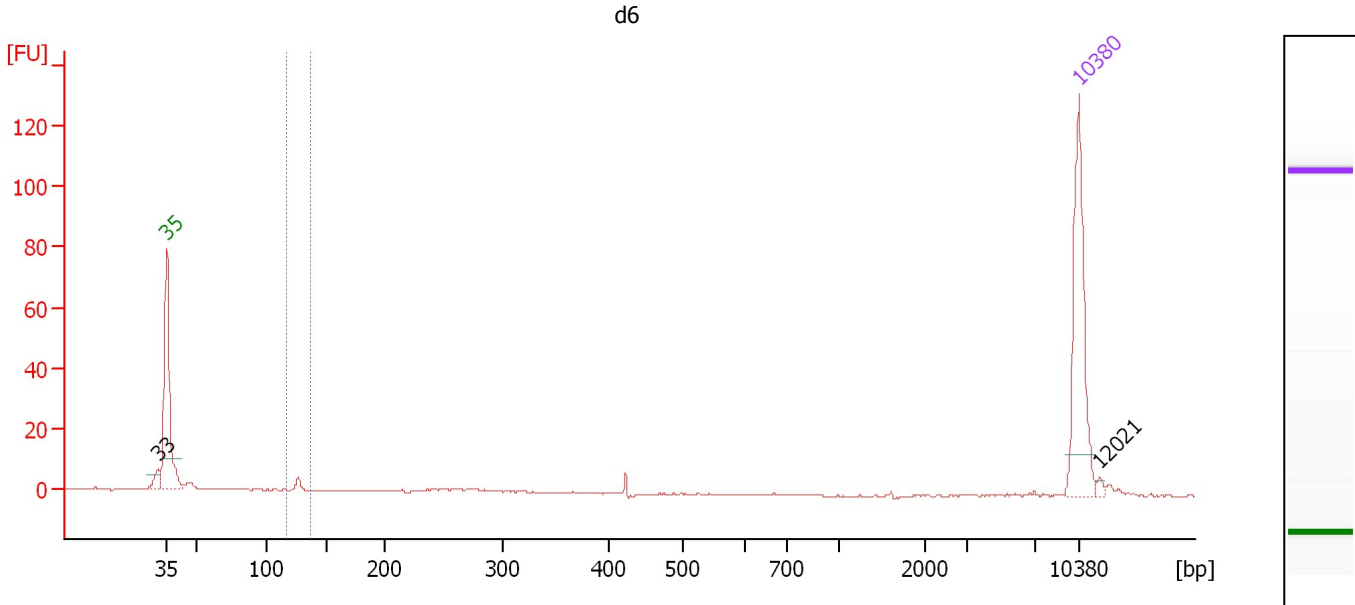
Region table for sample 3 : c5

| From [bp] | To [bp] | Average Size [bp] | Molarity [pmol/l] | Conc. [pg/μl] | Corr. Area | % of Total | Size distribution in CV [%] | Color |
|-----------|---------|-------------------|-------------------|---------------|------------|------------|-----------------------------|-------|
| 219 | 379 | 291 | 1,430.4 | 270.17 | 186.9 | 74 | 12.7 | Blue |

Assay Class: High Sensitivity DNA Assay
 Data Path: C:\...ttings\Bioanalyzer\2012-12-06\2012-12-07\2012-12-07_001.xad

Created: 12/7/2012 2:12:42 PM
 Modified: 12/7/2012 2:44:53 PM

Electropherogram Summary Continued ...



Overall Results for sample 4 : d6

Number of peaks found: 2 Corr. Area 1: 3.8
 Noise: 0.1

Peak table for sample 4 : d6

| Peak | Size [bp] | Conc. [pg/μl] | Molarity [pmol/l] | Observations |
|------|-----------|---------------|-------------------|--------------|
| 1 | 33 | 0.00 | 0.0 | |
| 2 | 35 | 125.00 | 5,411.3 | Lower Marker |
| 3 | 10,380 | 75.00 | 10.9 | Upper Marker |
| 4 | 12,021 | 0.00 | 0.0 | |

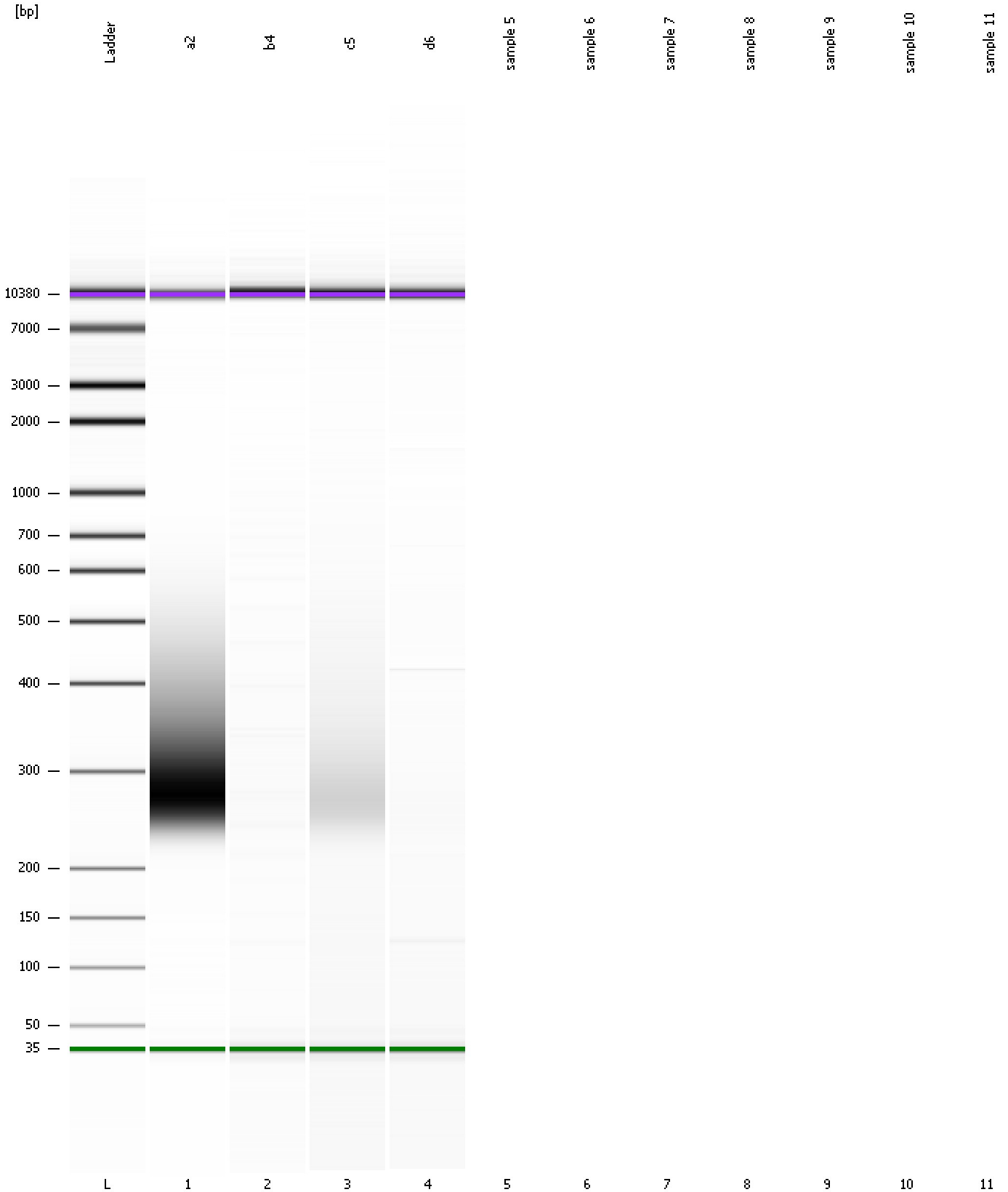
Region table for sample 4 : d6

| From [bp] | To [bp] | Average Size [bp] | Molarity [pmol/l] | Conc. [pg/μl] | Corr. Area | % of Total | Size distribution in CV [%] | Color |
|-----------|---------|-------------------|-------------------|---------------|------------|------------|-----------------------------|-------|
| 116 | 137 | 126 | 63.0 | 5.26 | 3.8 | 10 | 2.3 | Blue |

Assay Class: High Sensitivity DNA Assay
Data Path: C:\...ttings\Bioanalyzer\2012-12-06\2012-12-07\2012-12-07_001.xad

Created: 12/7/2012 2:12:42 PM
Modified: 12/7/2012 2:44:53 PM

Gel Image



Assay Class: High Sensitivity DNA Assay
Data Path: C:\...ttings\Bioanalyzer\2012-12-06\2012-12-07\2012-12-07_001.xad

Created: 12/7/2012 2:12:42 PM
Modified: 12/7/2012 2:44:53 PM

Invalid Samples

Sample 5 has not been run, no results available.

Sample 6 has not been run, no results available.

Sample 7 has not been run, no results available.

Sample 8 has not been run, no results available.

Sample 9 has not been run, no results available.

Sample 10 has not been run, no results available.

Sample 11 has not been run, no results available.

Assay Class: High Sensitivity DNA Assay
 Data Path: C:\...ttings\Bioanalyzer\2012-12-06\2012-12-07\2012-12-07_001.xad

Created: 12/7/2012 2:12:42 PM
 Modified: 12/7/2012 2:44:53 PM

Run Logbook

| Description | Number | Source | Category | Sub Category | Time | Time Zone | User | Host |
|--|--------|------------|----------|--------------|----------------------|-------------------------------------|----------|----------|
| Run ended on port 1 (Number of wells acquired: 5) | | Instrument | Run | | 12/7/2012 2:34:00 PM | (GMT --08:00) Pacific Standard Time | UC Davis | D8XSMGH1 |
| Run started on port 1 (File: C:\Documents and Settings\Bioanalyzer\2012-12-06\2012-12-07\2012-12-07_001.xad) | | Instrument | Run | | 12/7/2012 2:12:47 PM | (GMT --08:00) Pacific Standard Time | UC Davis | D8XSMGH1 |
| Product Number : G2938B | | Instrument | Run | | 12/7/2012 2:12:47 PM | (GMT --08:00) Pacific Standard Time | UC Davis | D8XSMGH1 |
| Name : | | Instrument | Run | | 12/7/2012 2:12:47 PM | (GMT --08:00) Pacific Standard Time | UC Davis | D8XSMGH1 |
| Vendor : Agilent Technologies | | Instrument | Run | | 12/7/2012 2:12:47 PM | (GMT --08:00) Pacific Standard Time | UC Davis | D8XSMGH1 |
| Serial# : DE13701086 | | Instrument | Run | | 12/7/2012 2:12:47 PM | (GMT --08:00) Pacific Standard Time | UC Davis | D8XSMGH1 |
| Firmware : C.01.069 | | Instrument | Run | | 12/7/2012 2:12:47 PM | (GMT --08:00) Pacific Standard Time | UC Davis | D8XSMGH1 |
| Cartridge : Electrode | | Instrument | Run | | 12/7/2012 2:12:47 PM | (GMT --08:00) Pacific Standard Time | UC Davis | D8XSMGH1 |