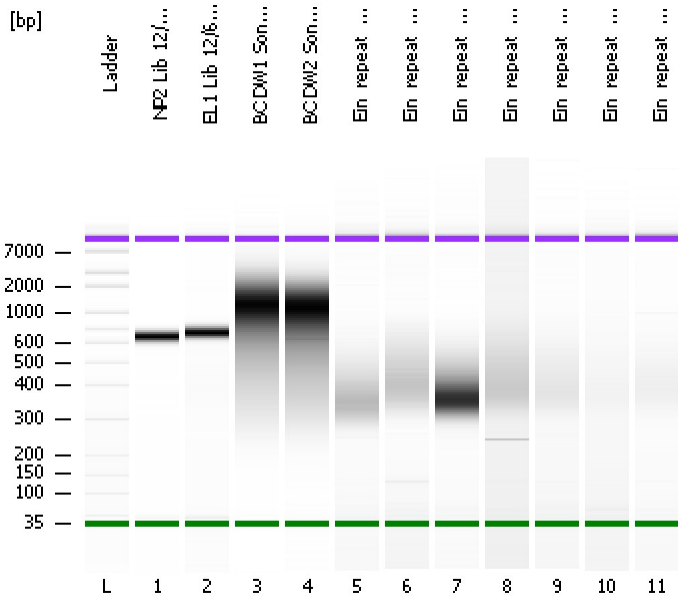


Assay Class: High Sensitivity DNA Assay
Data Path: C:\...ents and Settings\Bioanalyzer\2012-12-07\2012-12-07_001.xad

Created: 12/7/2012 3:15:59 PM
Modified: 12/7/2012 3:58:05 PM

Electrophoresis File Run Summary



Instrument Information:

Instrument Name: DE13701086 Firmware: C.01.069
Serial#: DE13701086 Type: G2938B

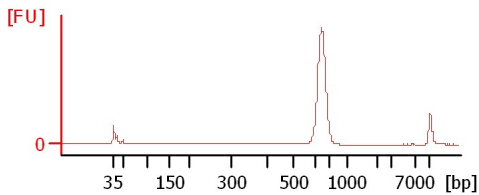
Assay Information:

Assay Origin Path: C:\Program Files\Agilent\2100 bioanalyzer\2100 expert\assays\dsDNA\High Sensitivity DNA.xsy
Assay Class: High Sensitivity DNA Assay
Version: 1.03
Assay Comments: Copyright © 2003-2010 Agilent Technologies

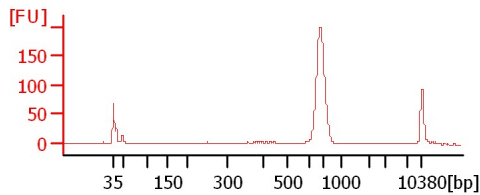
Chip Information:

Chip Lot #:
Reagent Kit Lot #:
Chip Comments:

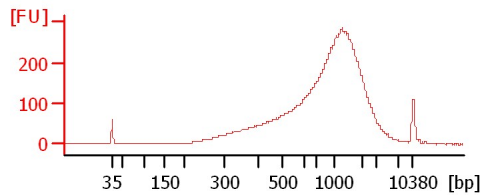
NP2 Lib 12/6/12



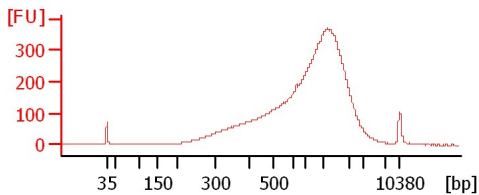
EL1 Lib 12/6/12



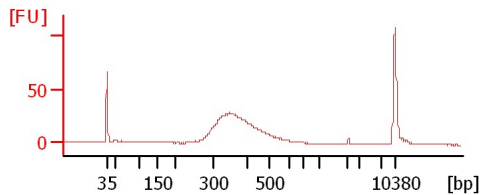
BC DW1 Soni 1:11



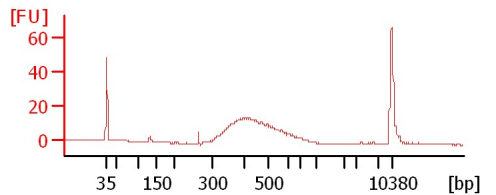
BC DW2 Soni 1:6



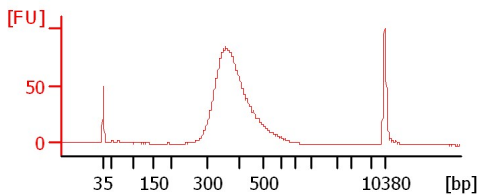
Ein_repeat_sample_4



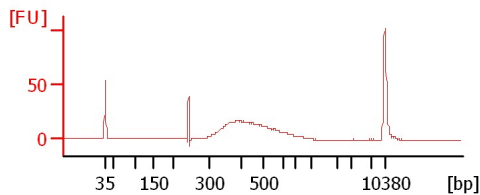
Ein_repeat_sample_5



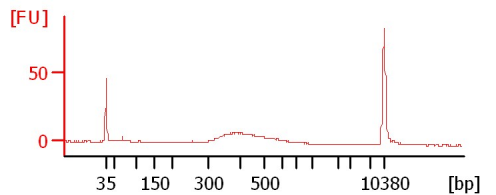
Ein_repeat_sample_10



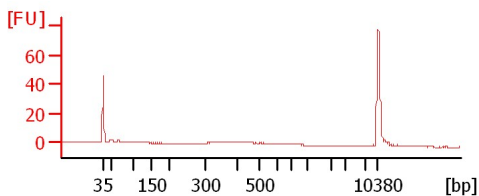
Ein_repeat_sample_12



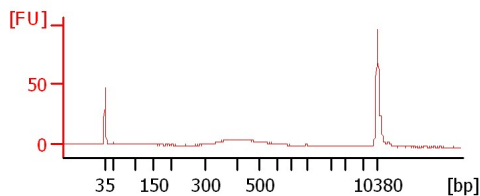
Ein_repeat_sample_16



Ein_repeat_sample_14



Ein_repeat_sample_15



Assay Class: High Sensitivity DNA Assay
 Data Path: C:\...ents and Settings\Bioanalyzer\2012-12-07\2012-12-07_001.xad

Created: 12/7/2012 3:15:59 PM
 Modified: 12/7/2012 3:58:05 PM

Electrophoresis File Run Summary (Chip Summary)

Sample Name	Sample Comment	Rest. Digest	Status	Observation	Result Label	Result Color
NP2 Lib 12/6/12		<input type="checkbox"/>	✓			
EL1 Lib 12/6/12		<input type="checkbox"/>	✓			
BC DW1 Soni 1:11		<input type="checkbox"/>	✓			
BC DW2 Soni 1:6		<input type="checkbox"/>	✓			
Ein_repeat_sample_4		<input type="checkbox"/>	✓			
Ein_repeat_sample_5		<input type="checkbox"/>	✓			
Ein_repeat_sample_10		<input type="checkbox"/>	✓			
Ein_repeat_sample_12		<input type="checkbox"/>	✓			
Ein_repeat_sample_16		<input type="checkbox"/>	✓			
Ein_repeat_sample_14		<input type="checkbox"/>	✓			
Ein_repeat_sample_15		<input type="checkbox"/>	✓			
Ladder		<input type="checkbox"/>	✓			

Chip Lot #

Reagent Kit Lot #

Chip Comments :

Assay Class: High Sensitivity DNA Assay
Data Path: C:\...ents and Settings\Bioanalyzer\2012-12-07\2012-12-07_001.xad

Created: 12/7/2012 3:15:59 PM
Modified: 12/7/2012 3:58:05 PM

Electrophoresis Assay Details

General Analysis Settings

Number of Available Sample and Ladder Wells (Max.) : 12
Minimum Visible Range [s] : 32
Maximum Visible Range [s] : 138
Start Analysis Time Range [s] : 33
End Analysis Time Range [s] : 137.5
Ladder Concentration [pg/μl] : 1950
Uses Standard Area for Ladder Fragments
Lower Marker Concentration [pg/μl] : 125
Upper Marker Concentration [pg/μl] : 75
Used Upper Marker for Quantitation
Standard Curve Fit is Point to Point
Show Data Aligned to Lower and Upper Marker

Integrator Settings

Integration Start Time [s] : 33.05
Integration End Time [s] : 137
Slope Threshold : 0.8
Height Threshold [FU] : 5
Area Threshold : 0.1
Width Threshold [s] : 0.6
Baseline Plateau [s] : 0.5

Filter Settings

Filter Width [s] : 0.5
Polynomial Order : 4

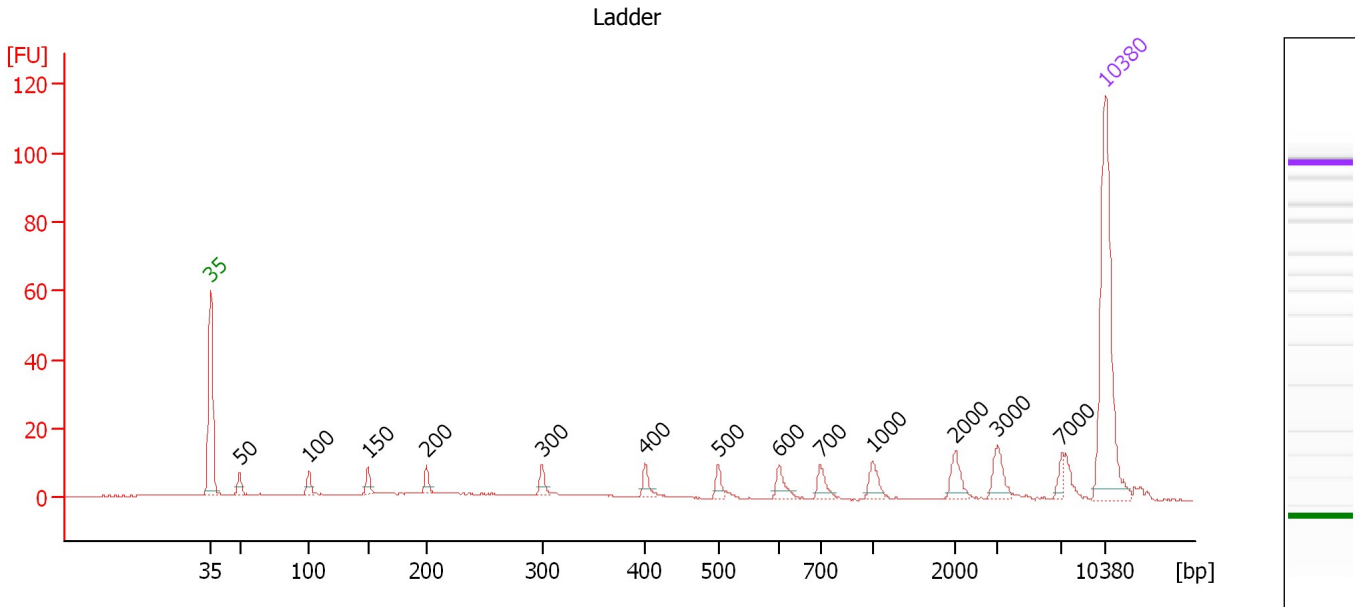
Ladder

Ladder Peak	Size	Area
1	35	160
2	50	210
3	100	208
4	150	221
5	200	242
6	300	270
7	400	305
8	500	306
9	600	336
10	700	321
11	1000	366
12	2000	413
13	3000	411
14	7000	400
15	10380	214

Assay Class: High Sensitivity DNA Assay
 Data Path: C:\...ents and Settings\Bioanalyzer\2012-12-07\2012-12-07_001.xad

Created: 12/7/2012 3:15:59 PM
 Modified: 12/7/2012 3:58:05 PM

Electropherogram Summary



Overall Results for Ladder

Noise: 0.1

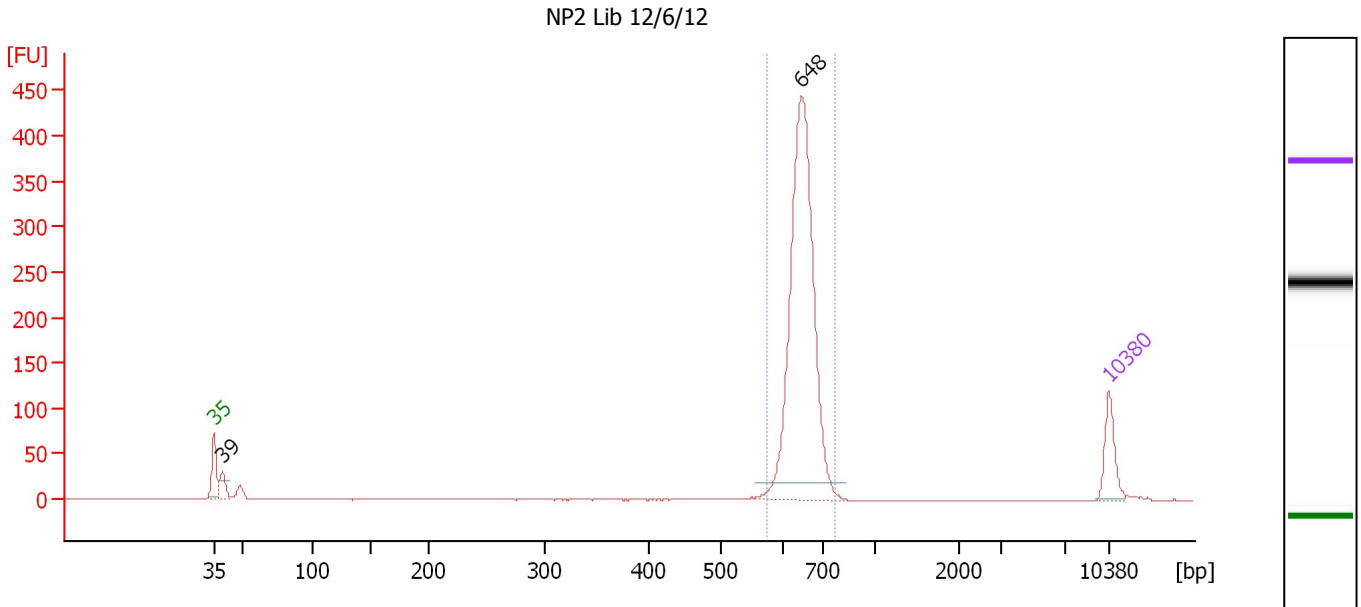
Peak table for Ladder

Peak	Size [bp]	Conc. [pg/μl]	Molarity [pmol/l]	Observations
1	35	125.00	5,411.3	Lower Marker
2	50	150.00	4,545.5	Ladder Peak
3	100	150.00	2,272.7	Ladder Peak
4	150	150.00	1,515.2	Ladder Peak
5	200	150.00	1,136.4	Ladder Peak
6	300	150.00	757.6	Ladder Peak
7	400	150.00	568.2	Ladder Peak
8	500	150.00	454.5	Ladder Peak
9	600	150.00	378.8	Ladder Peak
10	700	150.00	324.7	Ladder Peak
11	1,000	150.00	227.3	Ladder Peak
12	2,000	150.00	113.6	Ladder Peak
13	3,000	150.00	75.8	Ladder Peak
14	7,000	150.00	32.5	Ladder Peak
15	10,380	75.00	10.9	Upper Marker

Assay Class: High Sensitivity DNA Assay
 Data Path: C:\...ents and Settings\Bioanalyzer\2012-12-07\2012-12-07_001.xad

Created: 12/7/2012 3:15:59 PM
 Modified: 12/7/2012 3:58:05 PM

Electropherogram Summary Continued ...



Setpoint Deviations for sample 1 : NP2 Lib 12/6/12

Height Threshold [FU] : 20

Overall Results for sample 1 : NP2 Lib 12/6/12

Number of peaks found: 2 Corr. Area 1: 1,111.3
 Noise: 0.2

Peak table for sample 1 : NP2 Lib 12/6/12

Peak	Size [bp]	Conc. [pg/μl]	Molarity [pmol/l]	Observations
1	35	125.00	5,411.3	Lower Marker
2	39	65.16	2,520.6	
3	648	1,100.02	2,573.6	
4	10,380	75.00	10.9	Upper Marker

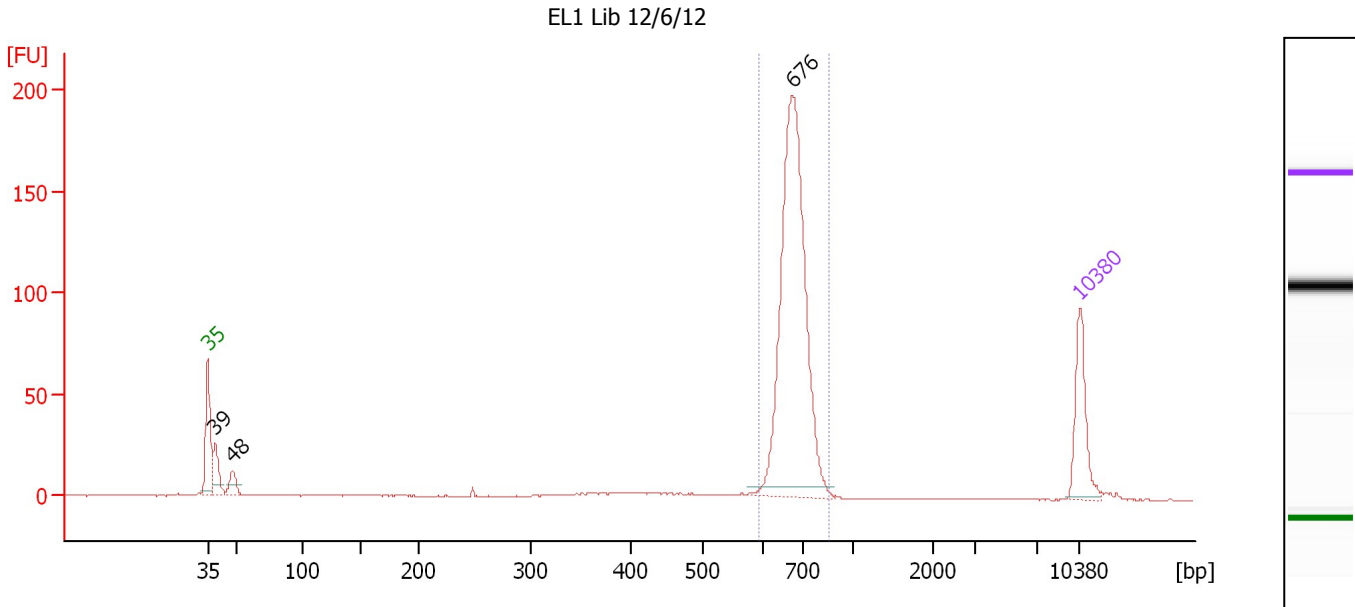
Region table for sample 1 : NP2 Lib 12/6/12

From [bp]	To [bp]	Average Size [bp]	Molarity [pmol/l]	Conc. [pg/μl]	Corr. Area	% of Total	Size distribution in CV [%]	Color
576	772	648	2,559.7	1,094.66	1,111.3	91	4.3	Blue square

Assay Class: High Sensitivity DNA Assay
 Data Path: C:\...ents and Settings\Bioanalyzer\2012-12-07\2012-12-07_001.xad

Created: 12/7/2012 3:15:59 PM
 Modified: 12/7/2012 3:58:05 PM

Electropherogram Summary Continued ...



Overall Results for sample 2 : EL1 Lib 12/6/12

Number of peaks found: 3 Corr. Area 1: 527.1
 Noise: 0.1

Peak table for sample 2 : EL1 Lib 12/6/12

Peak	Size [bp]	Conc. [pg/μl]	Molarity [pmol/l]	Observations
1	35	125.00	5,411.3	Lower Marker
2	39	63.14	2,453.8	
3	48	32.25	1,015.7	
4	676	614.03	1,377.3	
5	10,380	75.00	10.9	Upper Marker

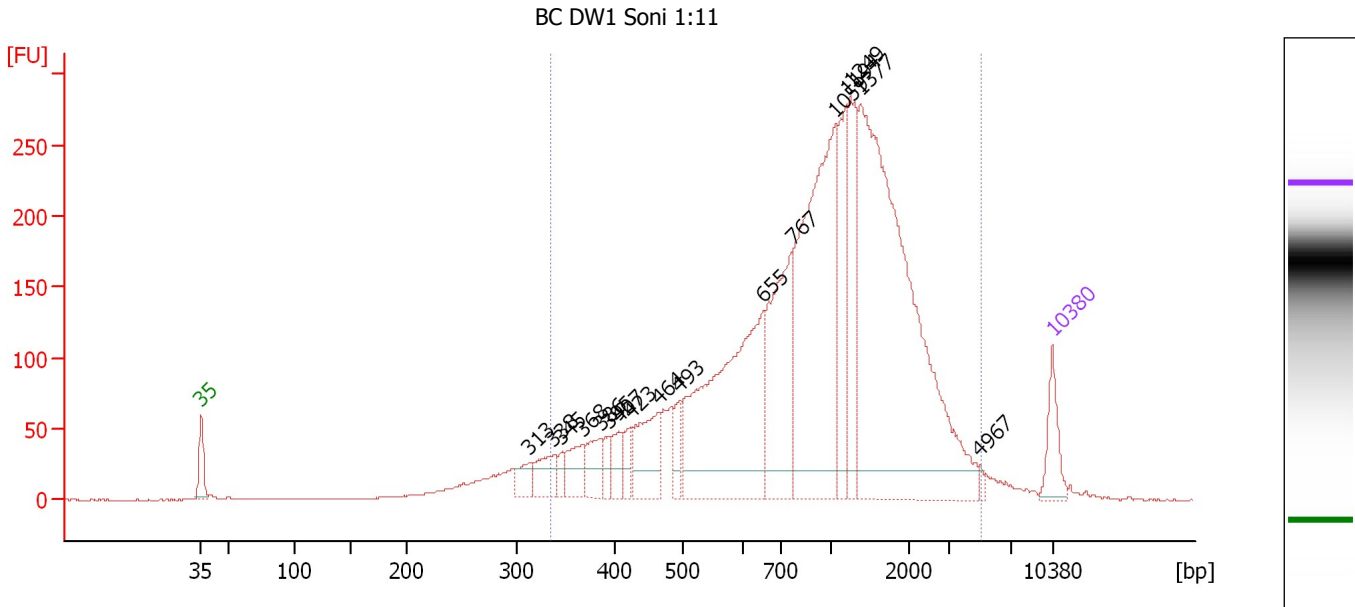
Region table for sample 2 : EL1 Lib 12/6/12

From [bp]	To [bp]	Average Size [bp]	Molarity [pmol/l]	Conc. [pg/μl]	Corr. Area	% of Total	Size distribution in CV [%]	Color
596	863	684	1,365.5	614.79	527.1	79	5.8	Blue

Assay Class: High Sensitivity DNA Assay
 Data Path: C:\...ents and Settings\Bioanalyzer\2012-12-07\2012-12-07_001.xad

Created: 12/7/2012 3:15:59 PM
 Modified: 12/7/2012 3:58:05 PM

Electropherogram Summary Continued ...



Setpoint Deviations for sample 3 : BC DW1 Soni 1:11

Height Threshold [FU] : 20

Overall Results for sample 3 : BC DW1 Soni 1:11

Number of peaks found: 17 Corr. Area 1: 4,750.3
 Noise: 0.2

Peak table for sample 3 : BC DW1 Soni 1:11

Peak	Size [bp]	Conc. [pg/μl]	Molarity [pmol/l]	Observations
1	35	125.00	5,411.3	Lower Marker
2	313	61.38	297.4	
3	338	99.81	447.7	
4	345	31.48	138.3	
5	368	97.07	400.0	
6	386	92.48	362.8	
7	395	46.96	180.2	
8	407	71.07	264.7	
9	423	48.49	173.8	
10	464	184.11	601.8	
11	493	63.48	194.9	
12	655	806.48	1,866.3	
13	767	408.74	807.3	
14	1,059	838.21	1,199.7	
15	1,194	213.92	271.4	
16	1,249	242.78	294.6	
17	1,377	1,341.53	1,475.7	
18	4,967	10.23	3.1	
19	10,380	75.00	10.9	Upper Marker

Assay Class: High Sensitivity DNA Assay
Data Path: C:\...ents and Settings\Bioanalyzer\2012-12-07\2012-12-07_001.xad

Created: 12/7/2012 3:15:59 PM
Modified: 12/7/2012 3:58:05 PM

Electropherogram Summary Continued ...

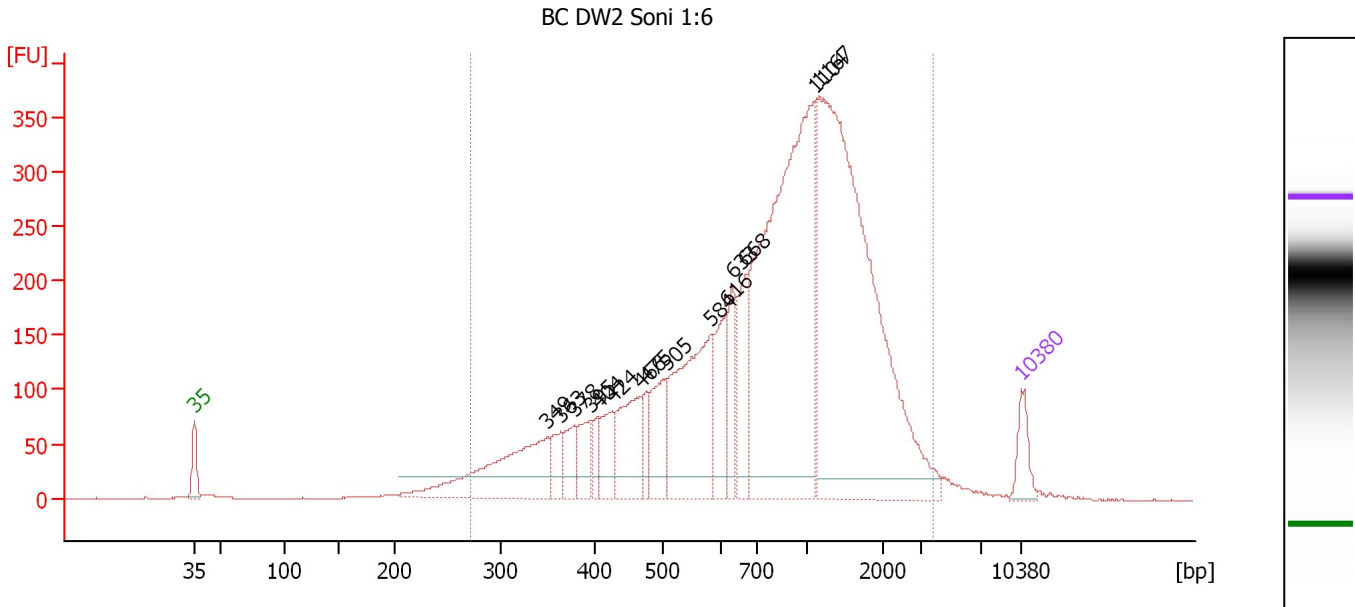
... Region table for sample 3 : BC DW1 Soni 1:11

From [bp]	To [bp]	Average Size [bp]	Molarity [pmol/l]	Conc. [pg/μl]	Corr. Area	% of Total	Size distribution in CV [%]	Color
335	5,015	1,167	9,155.5	4,700.94	4,750.3	93	61.0	■

Assay Class: High Sensitivity DNA Assay
 Data Path: C:\...ents and Settings\Bioanalyzer\2012-12-07\2012-12-07_001.xad

Created: 12/7/2012 3:15:59 PM
 Modified: 12/7/2012 3:58:05 PM

Electropherogram Summary Continued ...



Setpoint Deviations for sample 4 : BC DW2 Soni 1:6

Height Threshold [FU] : 20

Overall Results for sample 4 : BC DW2 Soni 1:6

Number of peaks found: 15 Corr. Area 1: 6,665.0
 Noise: 0.3

Peak table for sample 4 : BC DW2 Soni 1:6

Peak	Size [bp]	Conc. [pg/µl]	Molarity [pmol/l]	Observations
1	35	125.00	5,411.3	Lower Marker
2	349	551.10	2,390.3	
3	363	96.98	404.4	
4	378	111.68	447.7	
5	395	125.18	480.5	
6	404	62.78	235.2	
7	424	135.43	483.8	
8	466	279.42	908.5	
9	475	78.32	250.0	
10	505	202.97	609.3	
11	584	618.38	1,605.1	
12	616	220.74	542.6	
13	633	146.30	350.0	
14	668	218.78	495.9	
15	1,104	1,602.20	2,198.5	
16	1,167	1,908.12	2,477.4	
17	10,380	75.00	10.9	Upper Marker

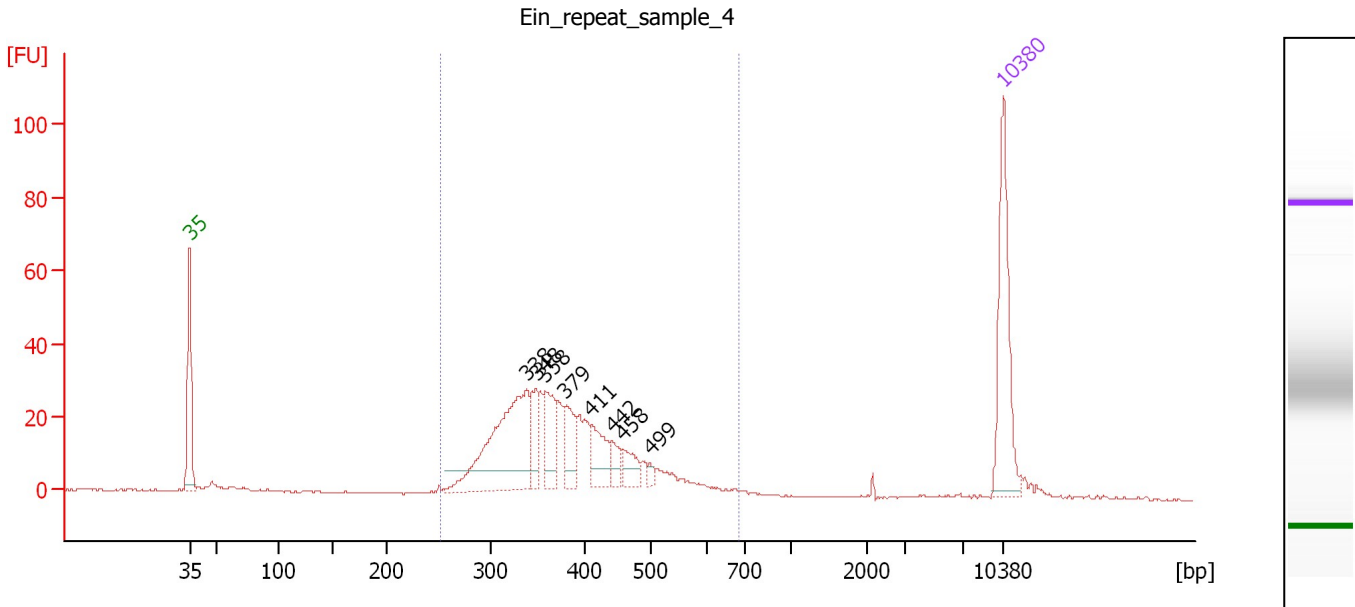
Region table for sample 4 : BC DW2 Soni 1:6

From [bp]	To [bp]	Average Size [bp]	Molarity [pmol/l]	Conc. [pg/µl]	Corr. Area	% of Total	Size distribution in CV [%]	Color
272	3,710	1,013	14,436.4	6,434.64	6,665.0	96	57.1	Blue

Assay Class: High Sensitivity DNA Assay
 Data Path: C:\...ents and Settings\Bioanalyzer\2012-12-07\2012-12-07_001.xad

Created: 12/7/2012 3:15:59 PM
 Modified: 12/7/2012 3:58:05 PM

Electropherogram Summary Continued ...



Overall Results for sample 5 : Ein_repeat sample 4

Number of peaks found: 8 Corr. Area 1: 462.2
 Noise: 0.2

Peak table for sample 5 : Ein_repeat sample 4

Peak	Size [bp]	Conc. [pg/μl]	Molarity [pmol/l]	Observations
1	35	125.00	5,411.3	Lower Marker
2	338	164.82	738.2	
3	348	32.12	139.9	
4	358	41.51	175.9	
5	379	32.80	131.0	
6	411	34.87	128.6	
7	442	12.47	42.8	
8	458	18.97	62.7	
9	499	4.72	14.4	
10	10,380	75.00	10.9	Upper Marker

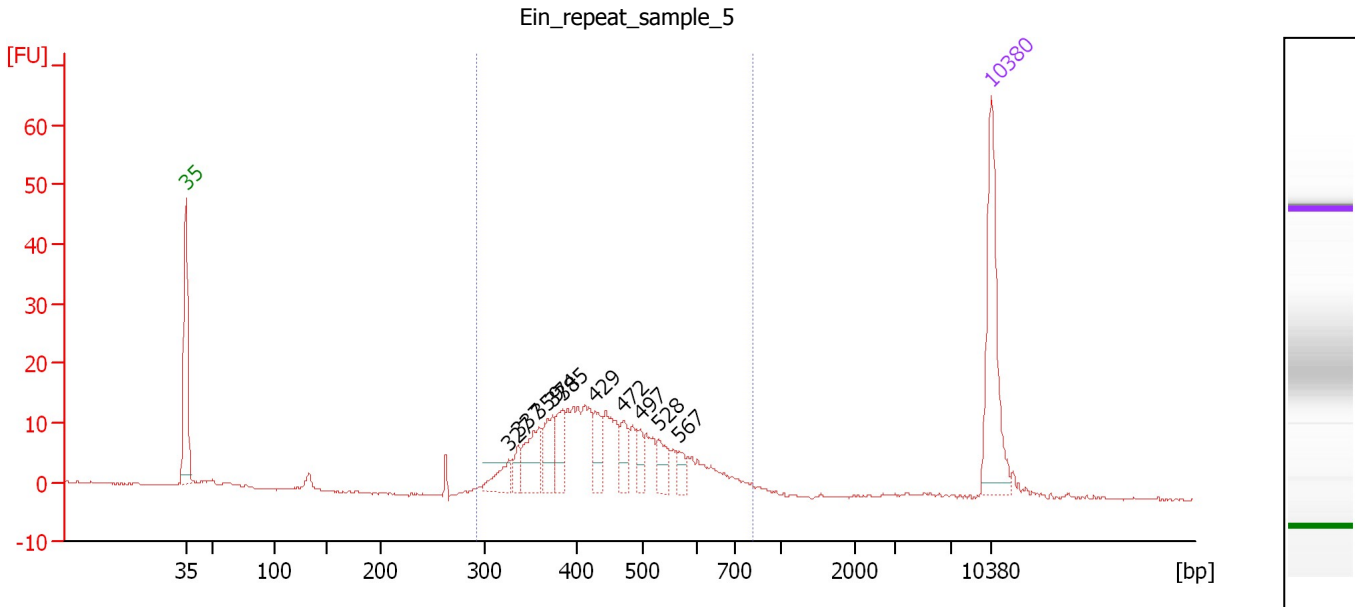
Region table for sample 5 : Ein_repeat sample 4

From [bp]	To [bp]	Average Size [bp]	Molarity [pmol/l]	Conc. [pg/μl]	Corr. Area	% of Total	Size distribution in CV [%]	Color
253	687	386	2,144.6	521.22	462.2	90	19.9	Blue

Assay Class: High Sensitivity DNA Assay
 Data Path: C:\...ents and Settings\Bioanalyzer\2012-12-07\2012-12-07_001.xad

Created: 12/7/2012 3:15:59 PM
 Modified: 12/7/2012 3:58:05 PM

Electropherogram Summary Continued ...



Overall Results for sample 6 : Ein_repeat_sample_5

Number of peaks found: 10 Corr. Area 1: 242.3
 Noise: 0.1

Peak table for sample 6 : Ein_repeat_sample_5

Peak	Size [bp]	Conc. [pg/μl]	Molarity [pmol/l]	Observations
1	35	125.00	5,411.3	Lower Marker
2	327	21.48	99.5	
3	337	13.41	60.3	
4	359	41.90	176.9	
5	374	32.99	133.5	
6	385	26.93	105.9	
7	429	25.27	89.3	
8	472	22.22	71.4	
9	497	13.41	40.9	
10	528	18.92	54.3	
11	567	11.02	29.4	
12	10,380	75.00	10.9	Upper Marker

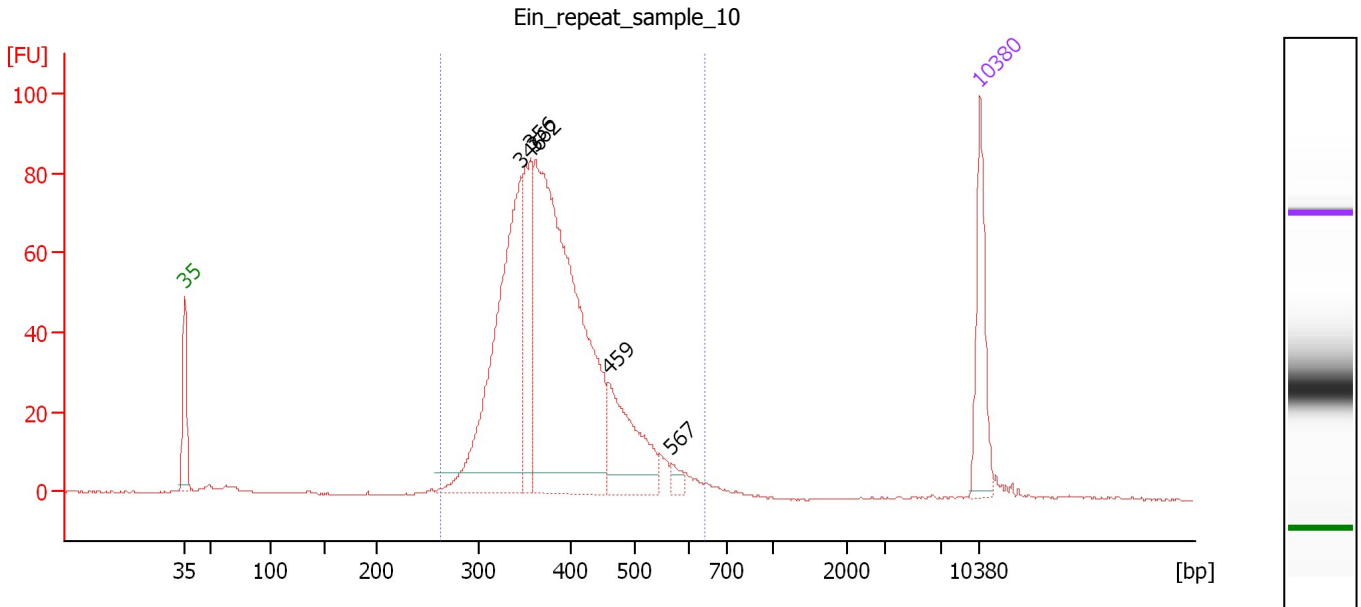
Region table for sample 6 : Ein_repeat_sample_5

From [bp]	To [bp]	Average Size [bp]	Molarity [pmol/l]	Conc. [pg/μl]	Corr. Area	% of Total	Size distribution in CV [%]	Color
293	819	454	1,472.1	418.28	242.3	94	20.8	Blue

Assay Class: High Sensitivity DNA Assay
 Data Path: C:\...ents and Settings\Bioanalyzer\2012-12-07\2012-12-07_001.xad

Created: 12/7/2012 3:15:59 PM
 Modified: 12/7/2012 3:58:05 PM

Electropherogram Summary Continued ...



Overall Results for sample 7 : Ein_repeat_sample_10

Number of peaks found: 5 Corr. Area 1: 1,060.2
 Noise: 0.1

Peak table for sample 7 : Ein_repeat_sample_10

Peak	Size [bp]	Conc. [pg/μl]	Molarity [pmol/l]	Observations
1	35	125.00	5,411.3	Lower Marker
2	346	437.15	1,914.6	
3	356	143.83	611.4	
4	362	712.83	2,986.3	
5	459	138.20	455.9	
6	567	10.79	28.8	
7	10,380	75.00	10.9	Upper Marker

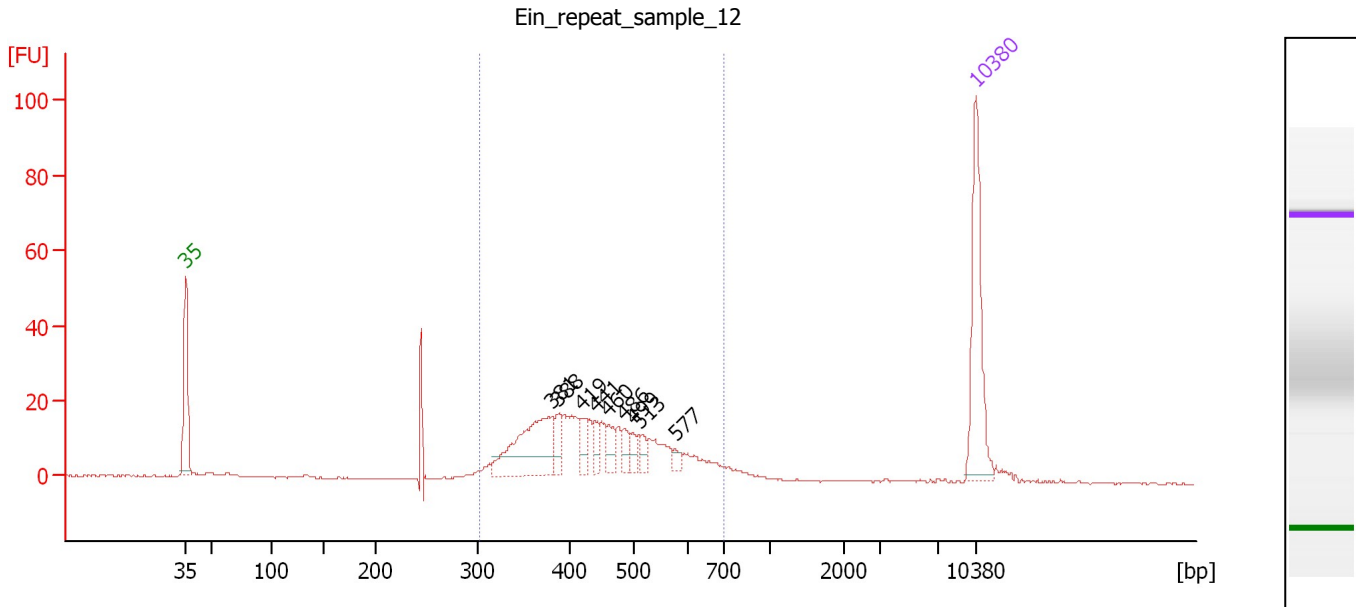
Region table for sample 7 : Ein_repeat_sample_10

From [bp]	To [bp]	Average Size [bp]	Molarity [pmol/l]	Conc. [pg/μl]	Corr. Area	% of Total	Size distribution in CV [%]	Color
264	642	388	5,874.3	1,458.97	1,060.2	97	16.6	Blue

Assay Class: High Sensitivity DNA Assay
 Data Path: C:\...ents and Settings\Bioanalyzer\2012-12-07\2012-12-07_001.xad

Created: 12/7/2012 3:15:59 PM
 Modified: 12/7/2012 3:58:05 PM

Electropherogram Summary Continued ...



Overall Results for sample 8 : Ein_repeat sample 12

Number of peaks found: 9 Corr. Area 1: 310.2
 Noise: 0.2

Peak table for sample 8 : Ein_repeat sample 12

Peak	Size [bp]	Conc. [pg/µl]	Molarity [pmol/l]	Observations
1	35	125.00	5,411.3	Lower Marker
2	381	99.01	394.1	
3	388	17.62	68.7	
4	419	14.74	53.3	
5	441	14.46	49.7	
6	460	15.53	51.1	
7	486	10.55	32.9	
8	499	9.60	29.1	
9	513	9.32	27.5	
10	577	5.96	15.6	
11	10,380	75.00	10.9	Upper Marker

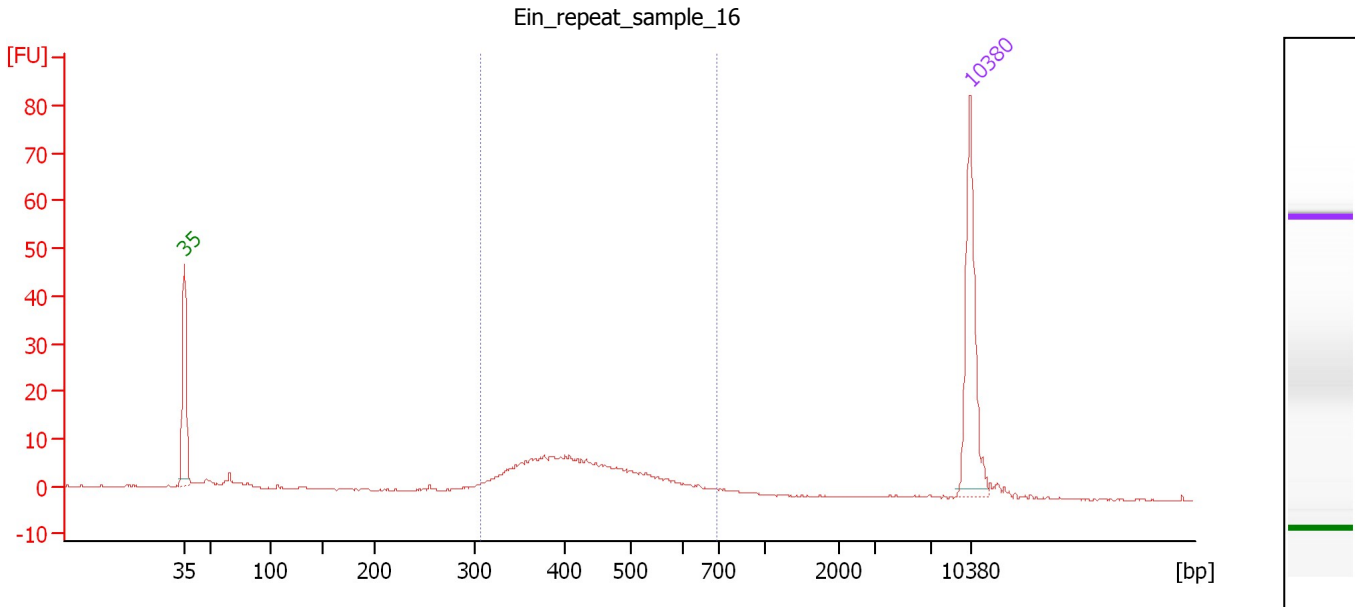
Region table for sample 8 : Ein_repeat sample 12

From [bp]	To [bp]	Average Size [bp]	Molarity [pmol/l]	Conc. [pg/µl]	Corr. Area	% of Total	Size distribution in CV [%]	Color
302	699	448	1,357.5	381.84	310.2	86	20.0	Blue

Assay Class: High Sensitivity DNA Assay
 Data Path: C:\...ents and Settings\Bioanalyzer\2012-12-07\2012-12-07_001.xad

Created: 12/7/2012 3:15:59 PM
 Modified: 12/7/2012 3:58:05 PM

Electropherogram Summary Continued ...



Overall Results for sample 9 : Ein_repeat_sample_16

Number of peaks found: 0 Corr. Area 1: 127.2
 Noise: 0.1

Peak table for sample 9 : Ein_repeat_sample_16

Peak	Size [bp]	Conc. [pg/μl]	Molarity [pmol/l]	Observations
1	35	125.00	5,411.3	Lower Marker
2	10,380	75.00	10.9	Upper Marker

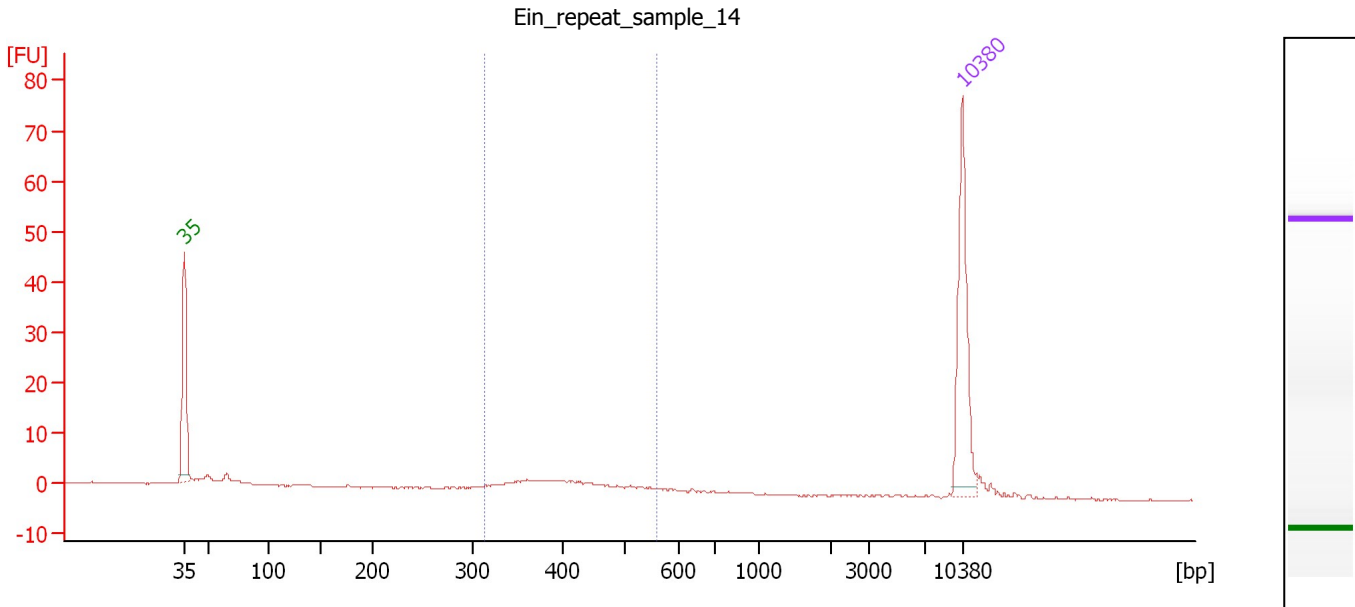
Region table for sample 9 : Ein_repeat_sample_16

From [bp]	To [bp]	Average Size [bp]	Molarity [pmol/l]	Conc. [pg/μl]	Corr. Area	% of Total	Size distribution in CV [%]	Color
306	692	436	696.9	191.65	127.2	79	19.3	Blue

Assay Class: High Sensitivity DNA Assay
 Data Path: C:\...ents and Settings\Bioanalyzer\2012-12-07\2012-12-07_001.xad

Created: 12/7/2012 3:15:59 PM
 Modified: 12/7/2012 3:58:05 PM

Electropherogram Summary Continued ...



Overall Results for sample 10 : Ein_repeat sample 14

Number of peaks found: 0 Corr. Area 1: 28.4
 Noise: 0.1

Peak table for sample 10 : Ein_repeat sample 14

Peak	Size [bp]	Conc. [pg/μl]	Molarity [pmol/l]	Observations
1	35	125.00	5,411.3	Lower Marker
2	10,380	75.00	10.9	Upper Marker

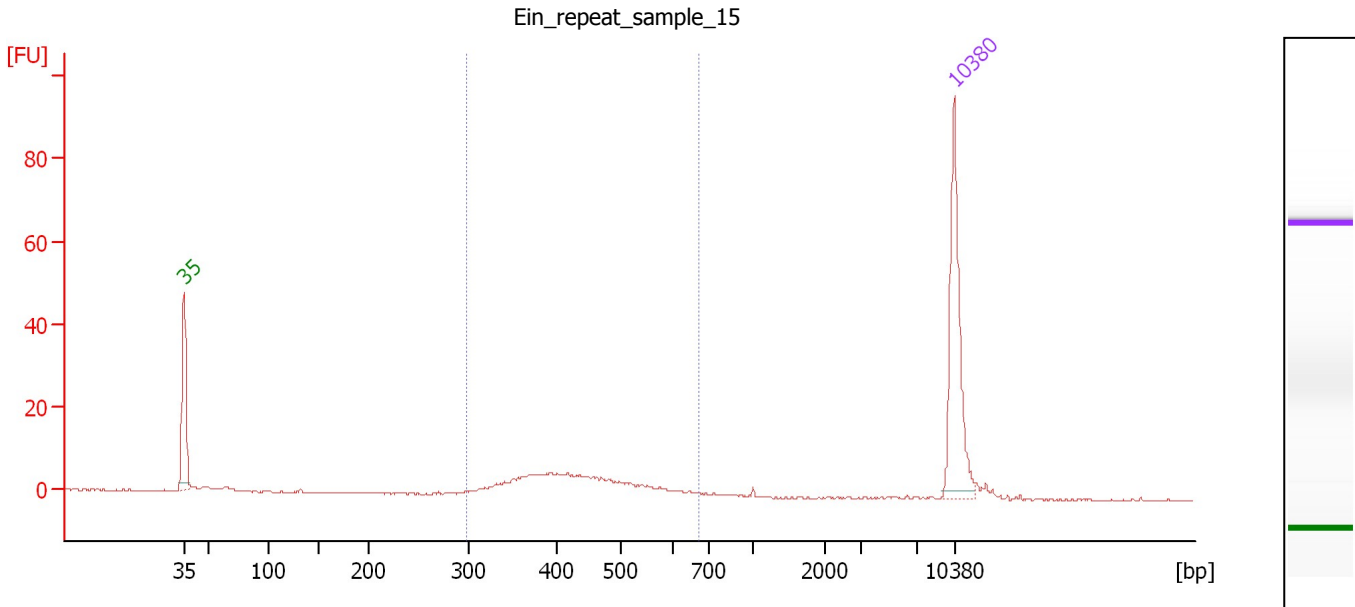
Region table for sample 10 : Ein_repeat sample 14

From [bp]	To [bp]	Average Size [bp]	Molarity [pmol/l]	Conc. [pg/μl]	Corr. Area	% of Total	Size distribution in CV [%]	Color
314	560	414	180.4	47.96	28.4	48	14.9	Blue

Assay Class: High Sensitivity DNA Assay
 Data Path: C:\...ents and Settings\Bioanalyzer\2012-12-07\2012-12-07_001.xad

Created: 12/7/2012 3:15:59 PM
 Modified: 12/7/2012 3:58:05 PM

Electropherogram Summary Continued ...



Overall Results for sample 11 : Ein_repeat sample 15

Number of peaks found: 0 Corr. Area 1: 80.5
 Noise: 0.1

Peak table for sample 11 : Ein_repeat sample 15

Peak	Size [bp]	Conc. [pg/μl]	Molarity [pmol/l]	Observations
1	35	125.00	5,411.3	Lower Marker
2	10,380	75.00	10.9	Upper Marker

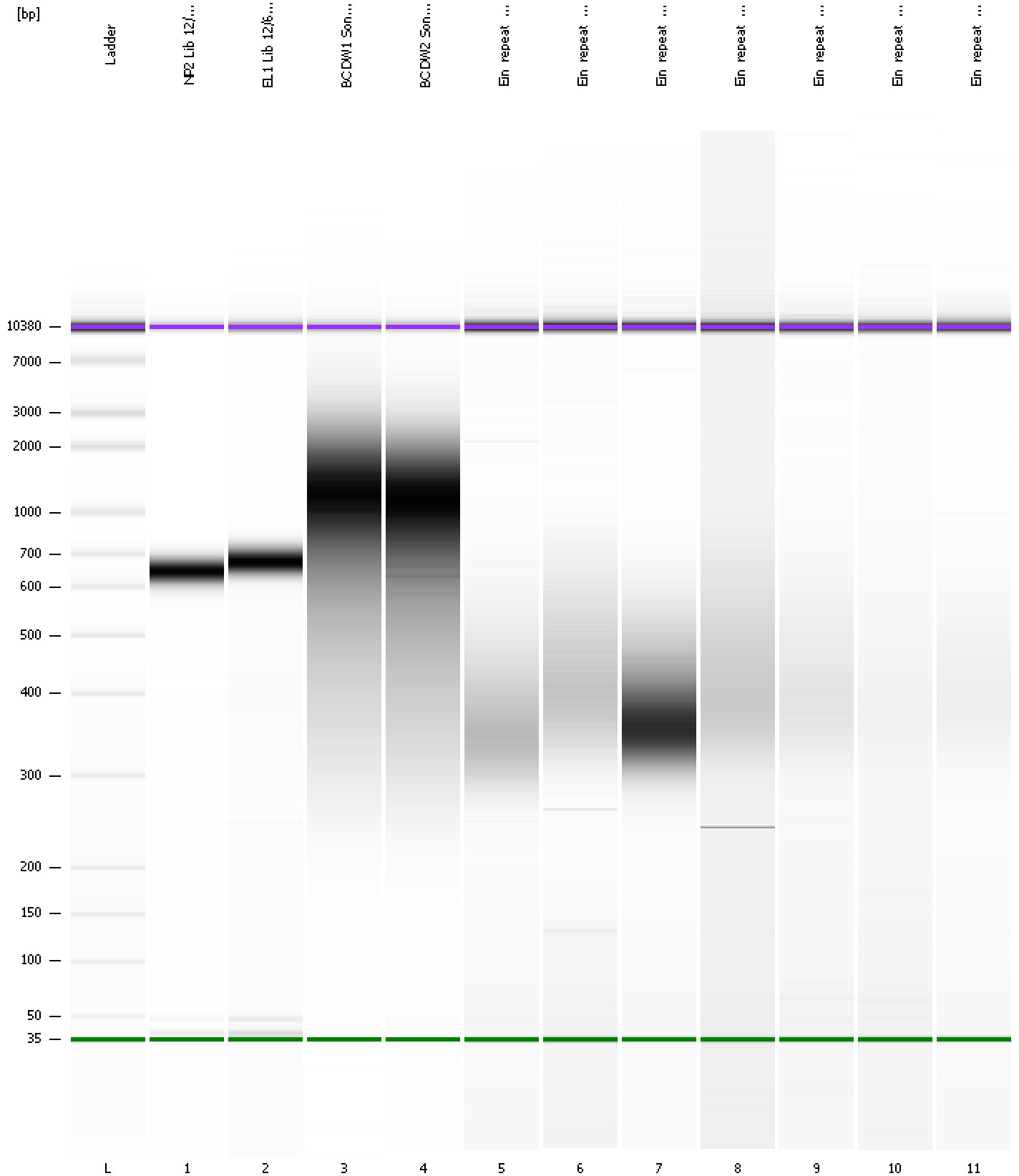
Region table for sample 11 : Ein_repeat sample 15

From [bp]	To [bp]	Average Size [bp]	Molarity [pmol/l]	Conc. [pg/μl]	Corr. Area	% of Total	Size distribution in CV [%]	Color
298	672	435	371.4	102.33	80.5	82	18.1	Blue

Assay Class: High Sensitivity DNA Assay
Data Path: C:\...ents and Settings\Bioanalyzer\2012-12-07\2012-12-07_001.xad

Created: 12/7/2012 3:15:59 PM
Modified: 12/7/2012 3:58:05 PM

Gel Image



Assay Class: High Sensitivity DNA Assay
 Data Path: C:\...ents and Settings\Bioanalyzer\2012-12-07\2012-12-07_001.xad

Created: 12/7/2012 3:15:59 PM
 Modified: 12/7/2012 3:58:05 PM

Run Logbook

Description	Number	Source	Category	Sub Category	Time	Time Zone	User	Host
Run ended on port 1 (Number of wells acquired: 12)		Instrument	Run		12/7/2012 3:57:16 PM	(GMT --08:00) Pacific Standard Time	UC Davis	D8XSMGH1
Run started on port 1 (File: C:\Documents and Settings\Bioanalyzer\2012-12-07\2012-12-07_001.xad)		Instrument	Run		12/7/2012 3:16:04 PM	(GMT --08:00) Pacific Standard Time	UC Davis	D8XSMGH1
Product Number : G2938B		Instrument	Run		12/7/2012 3:16:04 PM	(GMT --08:00) Pacific Standard Time	UC Davis	D8XSMGH1
Name :		Instrument	Run		12/7/2012 3:16:04 PM	(GMT --08:00) Pacific Standard Time	UC Davis	D8XSMGH1
Vendor : Agilent Technologies		Instrument	Run		12/7/2012 3:16:04 PM	(GMT --08:00) Pacific Standard Time	UC Davis	D8XSMGH1
Serial# : DE13701086		Instrument	Run		12/7/2012 3:16:04 PM	(GMT --08:00) Pacific Standard Time	UC Davis	D8XSMGH1
Firmware : C.01.069		Instrument	Run		12/7/2012 3:16:04 PM	(GMT --08:00) Pacific Standard Time	UC Davis	D8XSMGH1
Cartridge : Electrode		Instrument	Run		12/7/2012 3:16:04 PM	(GMT --08:00) Pacific Standard Time	UC Davis	D8XSMGH1