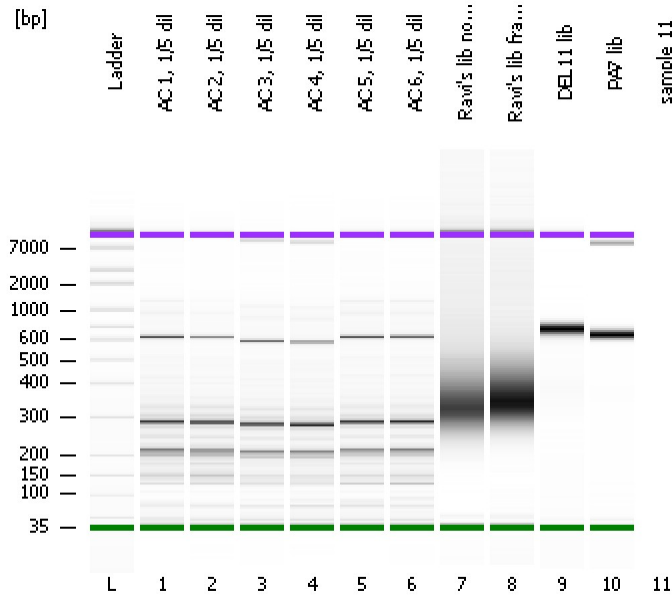


Assay Class: High Sensitivity DNA Assay
Data Path: C:\...ents and Settings\Bioanalyzer\2012-12-10\2012-12-10_001.xad

Created: 12/10/2012 9:53:54 AM
Modified: 12/10/2012 10:34:53 AM

Electrophoresis File Run Summary



Instrument Information:

Instrument Name: DE13701086 Firmware: C.01.069
Serial#: DE13701086 Type: G2938B

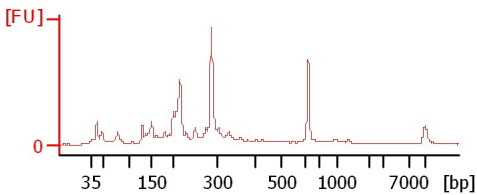
Assay Information:

Assay Origin Path: C:\Program Files\Agilent\2100 bioanalyzer\2100 expert\assays\dsDNA\High Sensitivity DNA.xsy
Assay Class: High Sensitivity DNA Assay
Version: 1.03
Assay Comments: Copyright © 2003-2010 Agilent Technologies

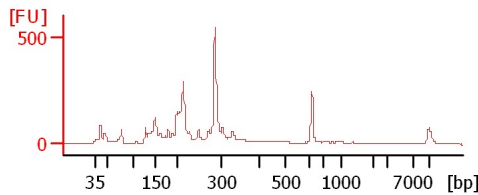
Chip Information:

Chip Lot #:
Reagent Kit Lot #:
Chip Comments:

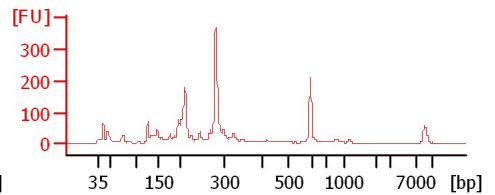
AC 1, 1/5 dil



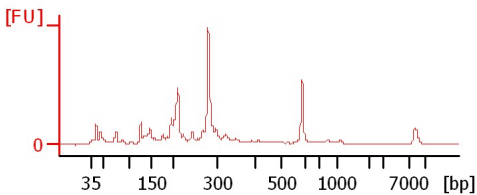
AC 2, 1/5 dil



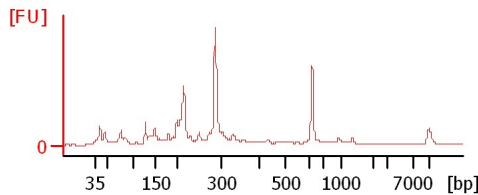
AC 3, 1/5 dil



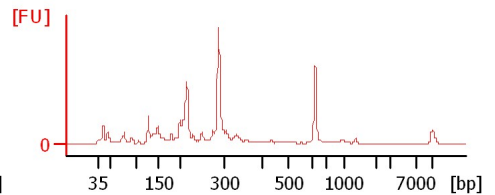
AC 4, 1/5 dil



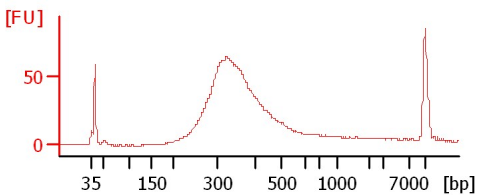
AC 5, 1/5 dil



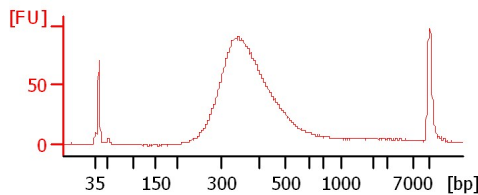
AC 6, 1/5 dil



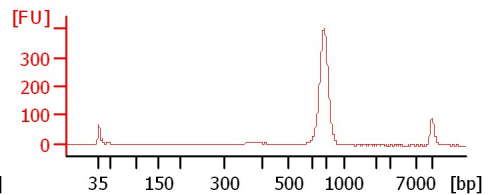
Ravi's lib no frag, 1/5 dil



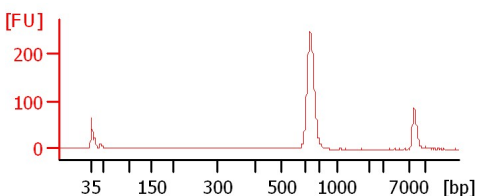
Ravi's lib frag, 1/5 dil



DEL11 lib



PA7 lib



Assay Class: High Sensitivity DNA Assay
 Data Path: C:\...ents and Settings\Bioanalyzer\2012-12-10\2012-12-10_001.xad

Created: 12/10/2012 9:53:54 AM
 Modified: 12/10/2012 10:34:53 AM

Electrophoresis File Run Summary (Chip Summary)

Sample Name	Sample Comment	Rest. Digest	Status	Observation	Result Label	Result Color
AC 1, 1/5 dil		<input type="checkbox"/>	✓			
AC 2, 1/5 dil		<input type="checkbox"/>	✓			
AC 3, 1/5 dil		<input type="checkbox"/>	✓			
AC 4, 1/5 dil		<input type="checkbox"/>	✓			
AC 5, 1/5 dil		<input type="checkbox"/>	✓			
AC 6, 1/5 dil		<input type="checkbox"/>	✓			
Ravi's lib no frag, 1/5 dil		<input type="checkbox"/>	✓			
Ravi's lib frag, 1/5 dil		<input type="checkbox"/>	✓			
DEL11 lib		<input type="checkbox"/>	✓			
PA7 lib		<input type="checkbox"/>	✓			
sample 11		<input type="checkbox"/>				
Ladder		<input type="checkbox"/>	✓			

Chip Lot #

Reagent Kit Lot #

Chip Comments :

Assay Class: High Sensitivity DNA Assay
Data Path: C:\...ents and Settings\Bioanalyzer\2012-12-10\2012-12-10_001.xad

Created: 12/10/2012 9:53:54 AM
Modified: 12/10/2012 10:34:53 AM

Electrophoresis Assay Details

General Analysis Settings

Number of Available Sample and Ladder Wells (Max.) : 12
Minimum Visible Range [s] : 32
Maximum Visible Range [s] : 138
Start Analysis Time Range [s] : 33
End Analysis Time Range [s] : 137.5
Ladder Concentration [pg/μl] : 1950
Uses Standard Area for Ladder Fragments
Lower Marker Concentration [pg/μl] : 125
Upper Marker Concentration [pg/μl] : 75
Used Upper Marker for Quantitation
Standard Curve Fit is Point to Point
Show Data Aligned to Lower and Upper Marker

Integrator Settings

Integration Start Time [s] : 33.05
Integration End Time [s] : 137
Slope Threshold : 0.8
Height Threshold [FU] : 5
Area Threshold : 0.1
Width Threshold [s] : 0.6
Baseline Plateau [s] : 0.5

Filter Settings

Filter Width [s] : 0.5
Polynomial Order : 4

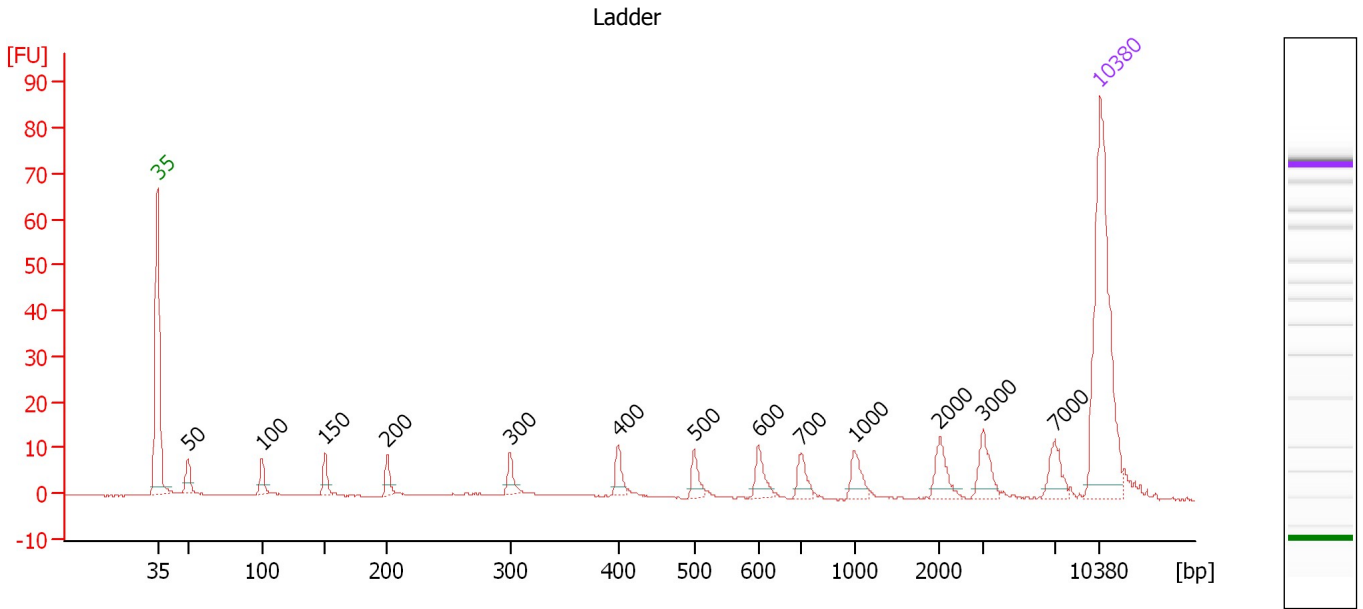
Ladder

Ladder Peak	Size	Area
1	35	160
2	50	210
3	100	208
4	150	221
5	200	242
6	300	270
7	400	305
8	500	306
9	600	336
10	700	321
11	1000	366
12	2000	413
13	3000	411
14	7000	400
15	10380	214

Assay Class: High Sensitivity DNA Assay
 Data Path: C:\...ents and Settings\Bioanalyzer\2012-12-10\2012-12-10_001.xad

Created: 12/10/2012 9:53:54 AM
 Modified: 12/10/2012 10:34:53 AM

Electropherogram Summary



Overall Results for Ladder

Noise: 0.1

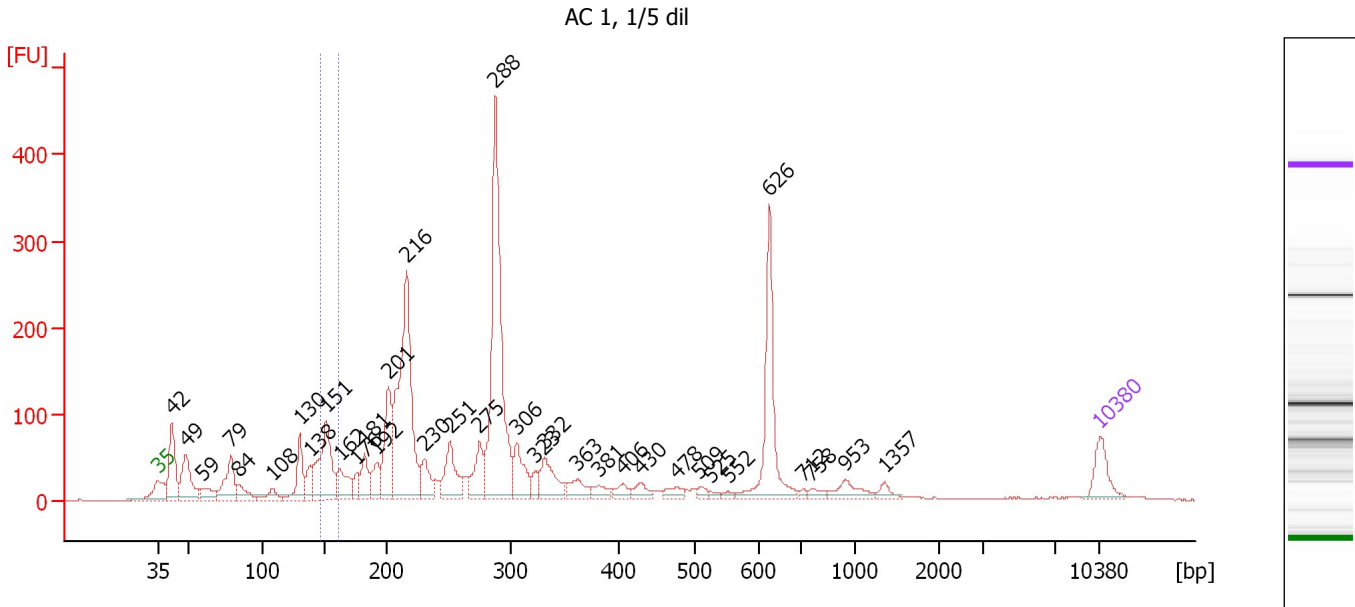
Peak table for Ladder

Peak	Size [bp]	Conc. [pg/μl]	Molarity [pmol/l]	Observations
1	35	125.00	5,411.3	Lower Marker
2	50	150.00	4,545.5	Ladder Peak
3	100	150.00	2,272.7	Ladder Peak
4	150	150.00	1,515.2	Ladder Peak
5	200	150.00	1,136.4	Ladder Peak
6	300	150.00	757.6	Ladder Peak
7	400	150.00	568.2	Ladder Peak
8	500	150.00	454.5	Ladder Peak
9	600	150.00	378.8	Ladder Peak
10	700	150.00	324.7	Ladder Peak
11	1,000	150.00	227.3	Ladder Peak
12	2,000	150.00	113.6	Ladder Peak
13	3,000	150.00	75.8	Ladder Peak
14	7,000	150.00	32.5	Ladder Peak
15	10,380	75.00	10.9	Upper Marker

Assay Class: High Sensitivity DNA Assay
 Data Path: C:\...ents and Settings\Bioanalyzer\2012-12-10\2012-12-10_001.xad

Created: 12/10/2012 9:53:54 AM
 Modified: 12/10/2012 10:34:53 AM

Electropherogram Summary Continued ...



Overall Results for sample 1 : AC 1, 1/5 dil

Number of peaks found: 35 Corr. Area 1: 146.0
 Noise: 0.4

Peak table for sample 1 : AC 1, 1/5 dil

Peak	Size [bp]	Conc. [pg/μl]	Molarity [pmol/l]	Observations
1	35	125.00	5,411.3	Lower Marker
2	42	274.07	9,904.2	
3	49	227.48	7,013.5	
4	59	72.80	1,857.2	
5	79	187.39	3,596.9	
6	84	72.68	1,304.6	
7	108	52.41	733.1	
8	130	158.48	1,842.2	
9	138	81.54	894.3	
10	151	369.63	3,719.9	
11	162	131.33	1,230.1	
12	176	56.43	486.3	
13	181	107.30	896.2	
14	192	97.26	768.7	
15	201	272.68	2,054.9	
16	216	881.34	6,191.1	
17	230	104.64	688.4	
18	251	181.79	1,097.0	
19	275	135.02	743.5	
20	288	962.22	5,063.8	
21	306	147.22	728.7	
22	323	43.36	203.2	
23	332	140.98	643.5	
24	363	68.33	285.5	
25	381	44.03	174.9	
26	406	38.62	144.2	

Assay Class: High Sensitivity DNA Assay
 Data Path: C:\...ents and Settings\Bioanalyzer\2012-12-10\2012-12-10_001.xad


Created: 12/10/2012 9:53:54 AM
 Modified: 12/10/2012 10:34:53 AM

Electropherogram Summary Continued ...

... Peak table for sample 1 : AC 1, 1/5 dil

Peak	Size [bp]	Conc. [pg/µl]	Molarity [pmol/l]	Observations
27	430	39.86	140.4	
28	478	37.63	119.2	
29	509	19.32	57.6	
30	525	10.56	30.5	
31	552	11.32	31.1	
32	626	371.50	899.3	
33	712	9.41	20.0	
34	758	21.11	42.2	
35	953	55.27	87.8	
36	1,357	22.07	24.6	
37	10,380	75.00	10.9	Upper Marker

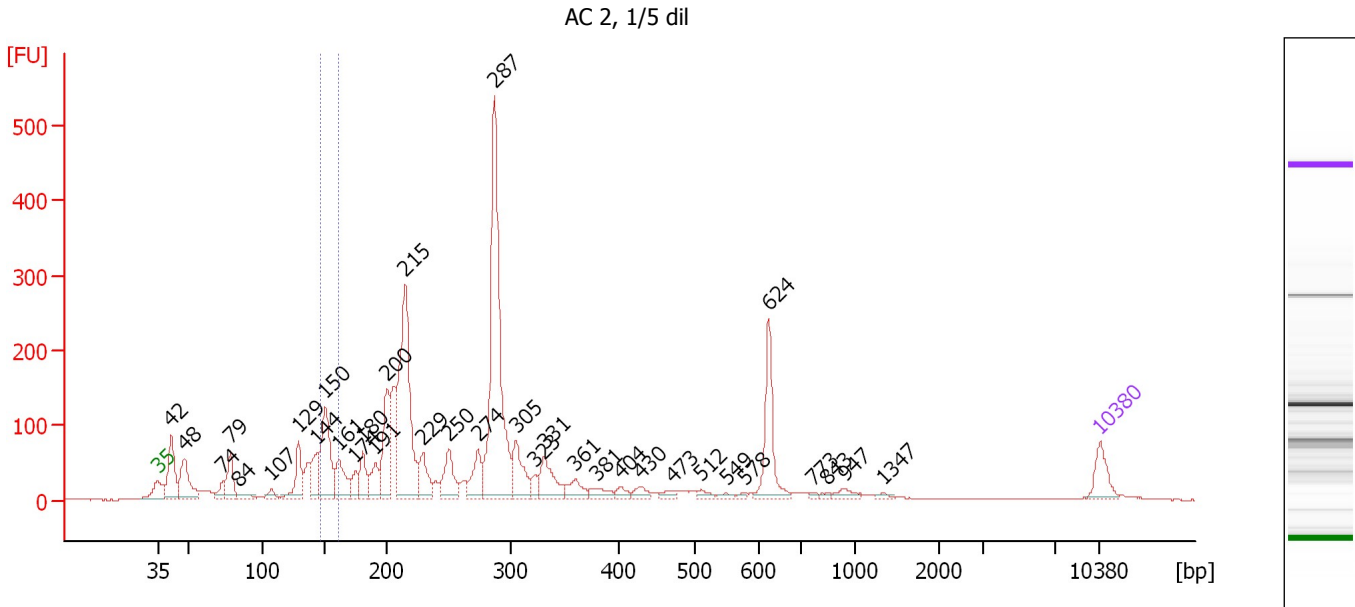
Region table for sample 1 : AC 1, 1/5 dil

From [bp]	To [bp]	Average Size [bp]	Molarity [pmol/l]	Conc. [pg/µl]	Corr. Area	% of Total	Size distribution in CV [%]	Color
147	160	152	2,805.7	281.37	146.0	4	2.2	

Assay Class: High Sensitivity DNA Assay
 Data Path: C:\...ents and Settings\Bioanalyzer\2012-12-10\2012-12-10_001.xad

Created: 12/10/2012 9:53:54 AM
 Modified: 12/10/2012 10:34:53 AM

Electropherogram Summary Continued ...



Overall Results for sample 2 : AC 2, 1/5 dil

Number of peaks found: 35 Corr. Area 1: 189.4
 Noise: 0.5

Peak table for sample 2 : AC 2, 1/5 dil

Peak	Size [bp]	Conc. [pg/μl]	Molarity [pmol/l]	Observations
1	35	125.00	5,411.3	Lower Marker
2	42	265.69	9,628.0	
3	48	242.75	7,611.1	
4	74	62.13	1,275.7	
5	79	158.71	3,043.5	
6	84	39.33	710.9	
7	107	40.51	571.7	
8	129	176.40	2,071.4	
9	144	142.11	1,499.2	
10	150	386.34	3,908.9	
11	161	173.11	1,626.5	
12	174	68.78	598.2	
13	180	124.42	1,044.7	
14	191	117.25	932.4	
15	200	286.62	2,170.1	
16	215	841.04	5,936.9	
17	229	138.50	915.7	
18	250	166.18	1,005.3	
19	274	139.34	769.9	
20	287	1,132.21	5,971.6	
21	305	175.53	871.0	
22	323	42.97	201.5	
23	331	157.85	721.9	
24	361	72.27	303.7	
25	381	48.37	192.4	
26	404	29.74	111.6	

Assay Class: High Sensitivity DNA Assay
 Data Path: C:\...ents and Settings\Bioanalyzer\2012-12-10\2012-12-10_001.xad


Created: 12/10/2012 9:53:54 AM
 Modified: 12/10/2012 10:34:53 AM

Electropherogram Summary Continued ...

... Peak table for sample 2 : AC 2, 1/5 dil

Peak	Size [bp]	Conc. [pg/µl]	Molarity [pmol/l]	Observations
27	430	36.35	128.0	
28	473	26.43	84.6	
29	512	20.45	60.6	
30	549	14.37	39.6	
31	578	7.69	20.2	
32	624	253.90	616.5	
33	773	9.42	18.5	
34	843	8.37	15.1	
35	947	27.34	43.8	
36	1,347	8.87	10.0	
37	10,380	75.00	10.9	Upper Marker

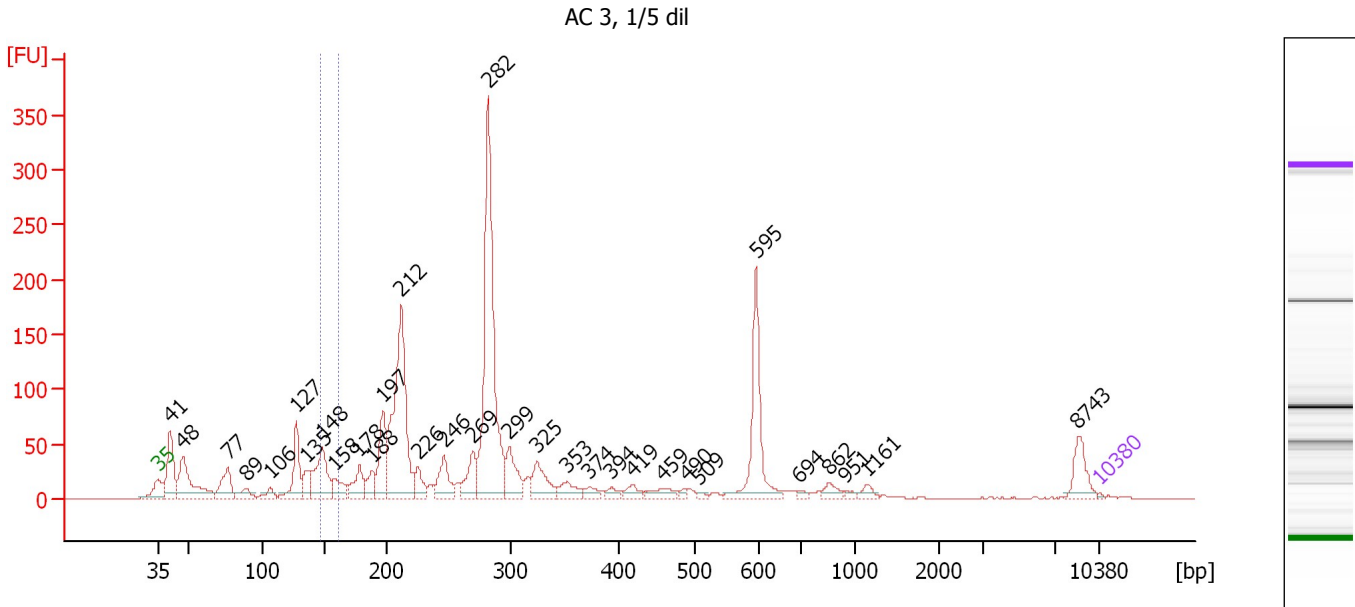
Region table for sample 2 : AC 2, 1/5 dil

From [bp]	To [bp]	Average Size [bp]	Molarity [pmol/l]	Conc. [pg/µl]	Corr. Area	% of Total	Size distribution in CV [%]	Color
147	160	152	3,778.4	378.22	189.4	5	2.3	

Assay Class: High Sensitivity DNA Assay
 Data Path: C:\...ents and Settings\Bioanalyzer\2012-12-10\2012-12-10_001.xad

Created: 12/10/2012 9:53:54 AM
 Modified: 12/10/2012 10:34:53 AM

Electropherogram Summary Continued ...



Overall Results for sample 3 : AC 3, 1/5 dil

Number of peaks found: 32 Corr. Area 1: 66.5
 Noise: 0.4

Peak table for sample 3 : AC 3, 1/5 dil

Peak	Size [bp]	Conc. [pg/μl]	Molarity [pmol/l]	Observations
1	35	125.00	5,411.3	Lower Marker
2	41	6,368.26	234,291.1	
3	48	7,705.72	244,966.1	
4	77	3,722.41	73,118.3	
5	89	1,432.50	24,360.5	
6	106	976.54	13,906.9	
7	127	4,944.48	58,774.5	
8	135	1,863.00	20,916.0	
9	148	6,365.90	65,348.7	
10	158	2,138.02	20,496.7	
11	178	2,725.65	23,252.9	
12	188	1,775.17	14,335.8	
13	197	5,318.30	40,970.0	
14	212	18,453.53	132,150.8	
15	226	1,987.39	13,351.1	
16	246	3,167.42	19,489.5	
17	269	2,939.55	16,535.4	
18	282	24,965.98	133,971.6	
19	299	3,427.77	17,358.0	
20	325	3,020.46	14,086.3	
21	353	1,652.01	7,093.3	
22	374	767.21	3,110.4	
23	394	595.52	2,289.9	
24	419	835.33	3,022.1	
25	459	1,083.90	3,575.5	
26	490	332.98	1,028.6	

Assay Class: High Sensitivity DNA Assay
 Data Path: C:\...ents and Settings\Bioanalyzer\2012-12-10\2012-12-10_001.xad

Created: 12/10/2012 9:53:54 AM
 Modified: 12/10/2012 10:34:53 AM

Electropherogram Summary Continued ...

... Peak table for sample 3 : AC 3, 1/5 dil

Peak	Size [bp]	Conc. [pg/μl]	Molarity [pmol/l]	Observations
27	509	220.51	656.5	
28	595	7,722.13	19,647.8	
29	694	245.38	536.0	
30	862	729.58	1,283.1	
31	951	222.80	354.8	
32	1,161	505.71	659.8	
33	8,743	1,952.08	338.3	
34	▶ 10,380	75.00	10.9	Upper Marker

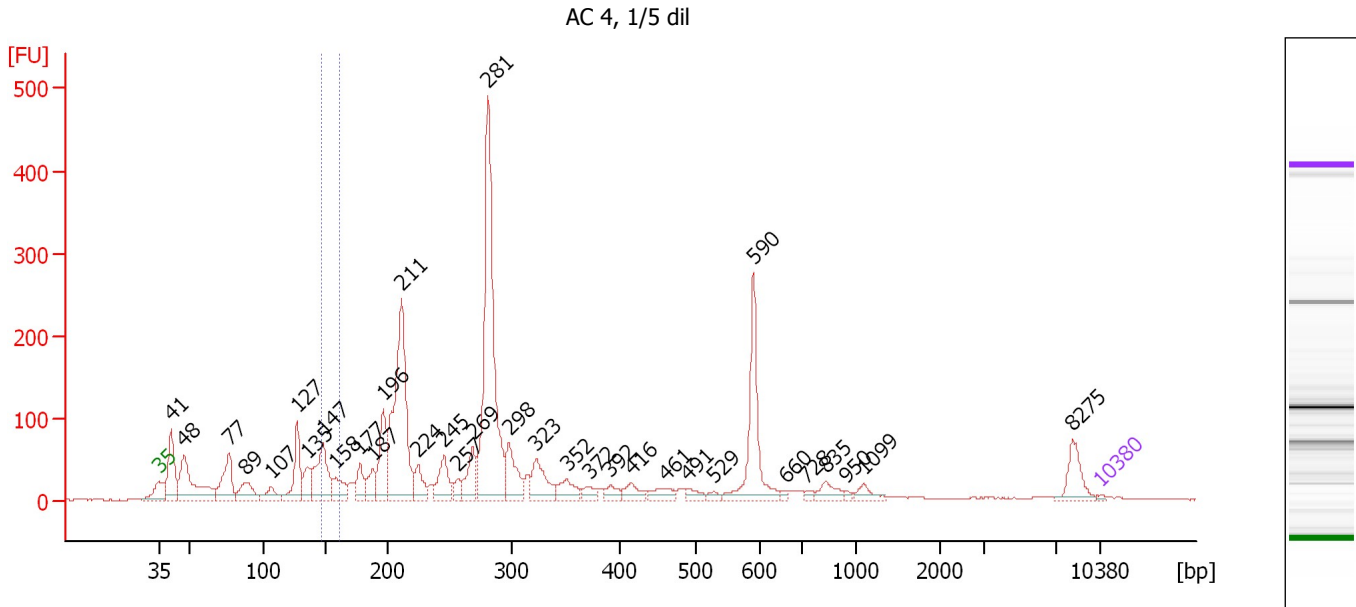
Region table for sample 3 : AC 3, 1/5 dil

From [bp]	To [bp]	Average Size [bp]	Molarity [pmol/l]	Conc. [pg/μl]	Corr. Area	% of Total	Size distribution in CV [%]	Color
147	160	152	42,342.8	4,236.04	66.5	3	2.5	■

Assay Class: High Sensitivity DNA Assay
 Data Path: C:\...ents and Settings\Bioanalyzer\2012-12-10\2012-12-10_001.xad

Created: 12/10/2012 9:53:54 AM
 Modified: 12/10/2012 10:34:53 AM

Electropherogram Summary Continued ...



Overall Results for sample 4 : AC 4, 1/5 dil

Number of peaks found: 34 Corr. Area 1: 94.1
 Noise: 0.4

Peak table for sample 4 : AC 4, 1/5 dil

Peak	Size [bp]	Conc. [pg/μl]	Molarity [pmol/l]	Observations
1	35	125.00	5,411.3	Lower Marker
2	41	5,442.68	199,856.8	
3	48	7,376.19	235,166.8	
4	77	4,387.56	85,960.9	
5	89	2,427.09	41,486.3	
6	107	1,290.02	18,339.5	
7	127	4,165.43	49,707.8	
8	135	1,960.79	22,002.0	
9	147	5,763.37	59,260.0	
10	158	2,042.66	19,596.3	
11	177	1,876.20	16,037.4	
12	187	1,801.58	14,566.0	
13	196	4,696.35	36,286.9	
14	211	16,473.70	118,470.7	
15	224	1,947.18	13,150.9	
16	245	2,665.99	16,466.7	
17	257	862.90	5,087.1	
18	269	2,611.90	14,727.5	
19	281	21,732.68	117,223.9	
20	298	3,264.33	16,571.9	
21	323	2,968.74	13,915.3	
22	352	1,618.44	6,974.5	
23	372	749.25	3,050.4	
24	392	770.29	2,976.1	
25	416	1,106.79	4,026.4	
26	461	1,021.01	3,352.3	

Assay Class: High Sensitivity DNA Assay
 Data Path: C:\...ents and Settings\Bioanalyzer\2012-12-10\2012-12-10_001.xad


Created: 12/10/2012 9:53:54 AM
 Modified: 12/10/2012 10:34:53 AM

Electropherogram Summary Continued ...

... Peak table for sample 4 : AC 4, 1/5 dil

Peak	Size [bp]	Conc. [pg/μl]	Molarity [pmol/l]	Observations
27	491	644.72	1,987.7	
28	529	338.87	971.0	
29	590	6,780.95	17,423.2	
30	660	219.41	503.7	
31	728	238.27	496.2	
32	835	1,001.08	1,815.6	
33	950	191.53	305.5	
34	1,099	656.36	904.9	
35	8,275	1,680.20	307.7	
36	▶ 10,380	75.00	10.9	Upper Marker

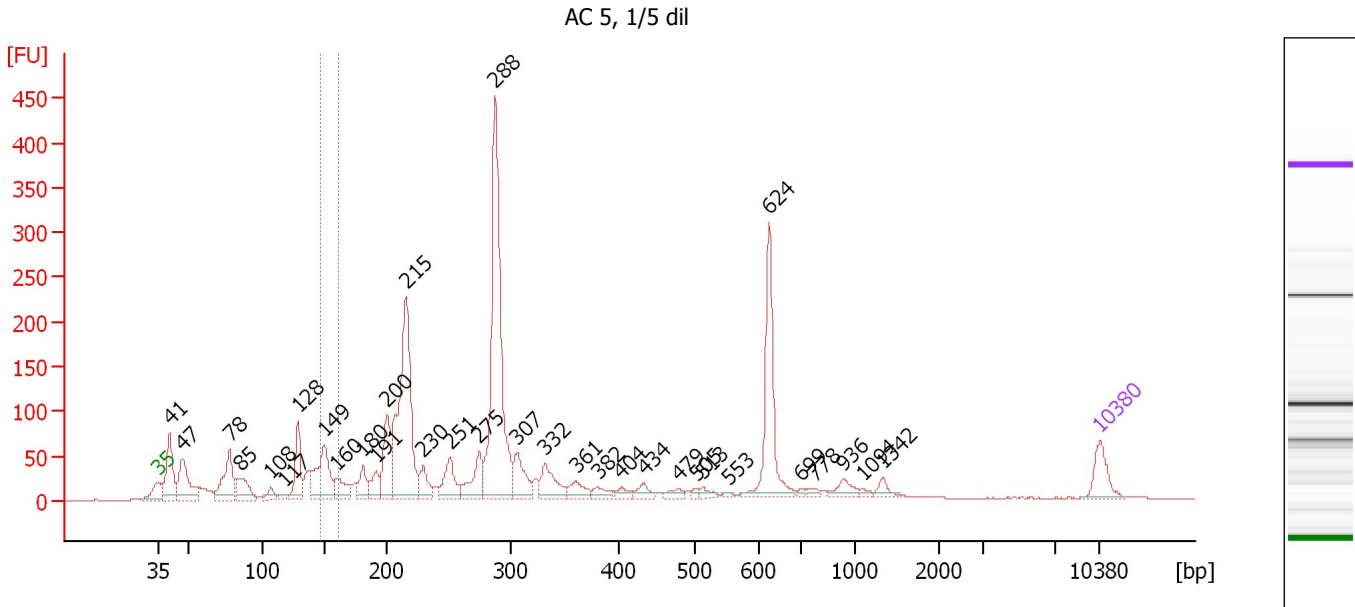
Region table for sample 4 : AC 4, 1/5 dil

From [bp]	To [bp]	Average Size [bp]	Molarity [pmol/l]	Conc. [pg/μl]	Corr. Area	% of Total	Size distribution in CV [%]	Color
147	160	151	38,291.0	3,825.16	94.1	3	2.6	

Assay Class: High Sensitivity DNA Assay
 Data Path: C:\...ents and Settings\Bioanalyzer\2012-12-10\2012-12-10_001.xad

Created: 12/10/2012 9:53:54 AM
 Modified: 12/10/2012 10:34:53 AM

Electropherogram Summary Continued ...



Overall Results for sample 5 : AC 5, 1/5 dil

Number of peaks found: 33 Corr. Area 1: 93.2
 Noise: 0.4

Peak table for sample 5 : AC 5, 1/5 dil

Peak	Size [bp]	Conc. [pg/μl]	Molarity [pmol/l]	Observations
1	35	125.00	5,411.3	Lower Marker
2	41	254.62	9,429.4	
3	47	238.64	7,620.0	
4	78	230.89	4,476.0	
5	85	136.69	2,439.3	
6	108	38.76	546.2	
7	117	17.67	228.0	
8	128	181.89	2,148.0	
9	149	277.83	2,823.5	
10	160	90.15	855.5	
11	180	85.09	714.9	
12	191	73.65	584.5	
13	200	209.17	1,584.6	
14	215	794.28	5,590.5	
15	230	83.92	554.0	
16	251	127.71	771.2	
17	275	141.01	777.5	
18	288	1,007.29	5,298.3	
19	307	129.92	641.9	
20	332	119.88	546.8	
21	361	60.79	255.0	
22	382	36.36	144.4	
23	404	25.04	93.9	
24	434	36.68	128.1	
25	479	27.23	86.1	
26	505	11.65	35.0	

Assay Class: High Sensitivity DNA Assay
 Data Path: C:\...ents and Settings\Bioanalyzer\2012-12-10\2012-12-10_001.xad

Created: 12/10/2012 9:53:54 AM
 Modified: 12/10/2012 10:34:53 AM

Electropherogram Summary Continued ...

... Peak table for sample 5 : AC 5, 1/5 dil

Peak	Size [bp]	Conc. [pg/µl]	Molarity [pmol/l]	Observations
27	513	22.79	67.3	
28	553	9.64	26.4	
29	624	364.44	885.1	
30	699	10.44	22.6	
31	778	15.04	29.3	
32	936	43.14	69.8	
33	1,094	11.31	15.7	
34	1,342	25.87	29.2	
35	10,380	75.00	10.9	Upper Marker

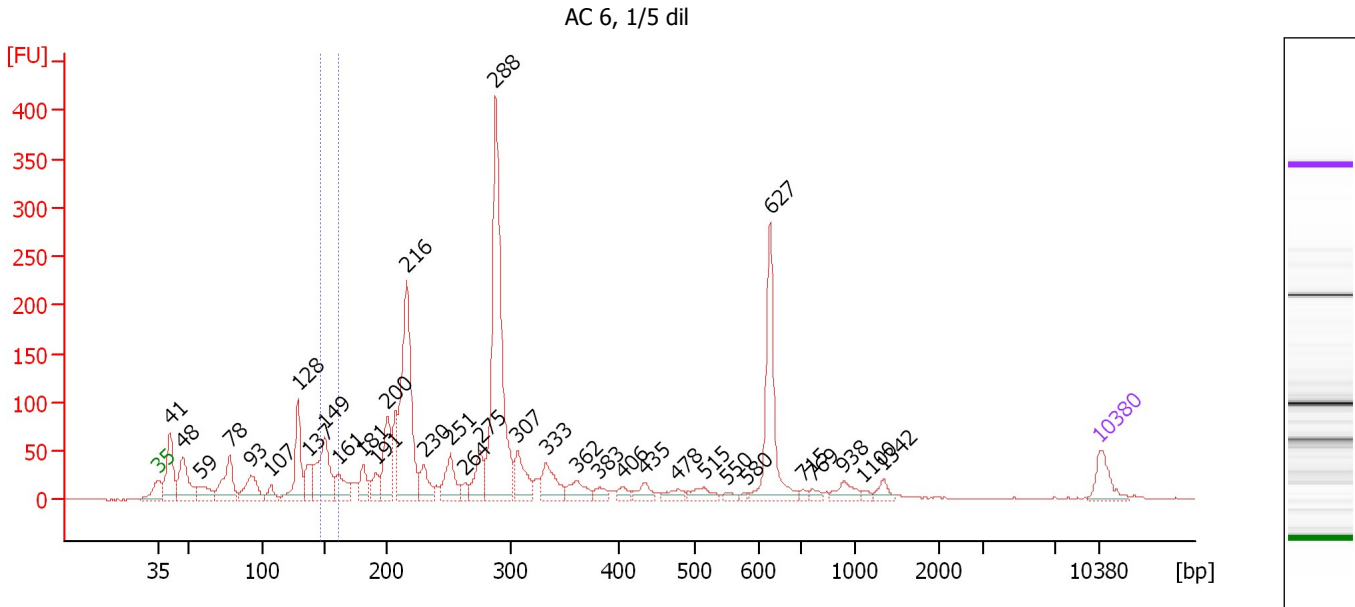
Region table for sample 5 : AC 5, 1/5 dil

From [bp]	To [bp]	Average Size [bp]	Molarity [pmol/l]	Conc. [pg/µl]	Corr. Area	% of Total	Size distribution in CV [%]	Color
147	160	152	2,006.3	200.93	93.2	3	2.4	

Assay Class: High Sensitivity DNA Assay
 Data Path: C:\...ents and Settings\Bioanalyzer\2012-12-10\2012-12-10_001.xad

Created: 12/10/2012 9:53:54 AM
 Modified: 12/10/2012 10:34:53 AM

Electropherogram Summary Continued ...



Overall Results for sample 6 : AC 6, 1/5 dil

Number of peaks found: 35 Corr. Area 1: 97.7
 Noise: 0.4

Peak table for sample 6 : AC 6, 1/5 dil

Peak	Size [bp]	Conc. [pg/μl]	Molarity [pmol/l]	Observations
1	35	125.00	5,411.3	Lower Marker
2	41	288.90	10,689.4	
3	48	254.27	8,106.4	
4	59	99.06	2,546.4	
5	78	232.26	4,485.7	
6	93	168.82	2,754.4	
7	107	51.02	722.0	
8	128	269.36	3,176.7	
9	137	105.78	1,170.4	
10	149	353.73	3,587.7	
11	161	125.96	1,185.1	
12	181	96.65	809.8	
13	191	75.82	601.6	
14	200	228.22	1,728.1	
15	216	780.25	5,473.8	
16	230	100.17	660.5	
17	251	146.53	883.5	
18	264	38.05	218.7	
19	275	126.78	697.6	
20	288	1,118.32	5,880.0	
21	307	151.61	748.4	
22	333	134.56	611.9	
23	362	81.14	339.8	
24	383	37.13	146.9	
25	406	30.17	112.5	
26	435	49.12	171.0	

Assay Class: High Sensitivity DNA Assay
 Data Path: C:\...ents and Settings\Bioanalyzer\2012-12-10\2012-12-10_001.xad

Created: 12/10/2012 9:53:54 AM
 Modified: 12/10/2012 10:34:53 AM

Electropherogram Summary Continued ...

... Peak table for sample 6 : AC 6, 1/5 dil

Peak	Size [bp]	Conc. [pg/µl]	Molarity [pmol/l]	Observations
27	478	39.51	125.1	
28	515	51.99	152.8	
29	550	16.44	45.3	
30	580	8.80	23.0	
31	627	411.71	995.4	
32	715	14.08	29.8	
33	769	18.02	35.5	
34	938	50.57	81.7	
35	1,100	13.58	18.7	
36	1,342	31.26	35.3	
37	10,380	75.00	10.9	Upper Marker

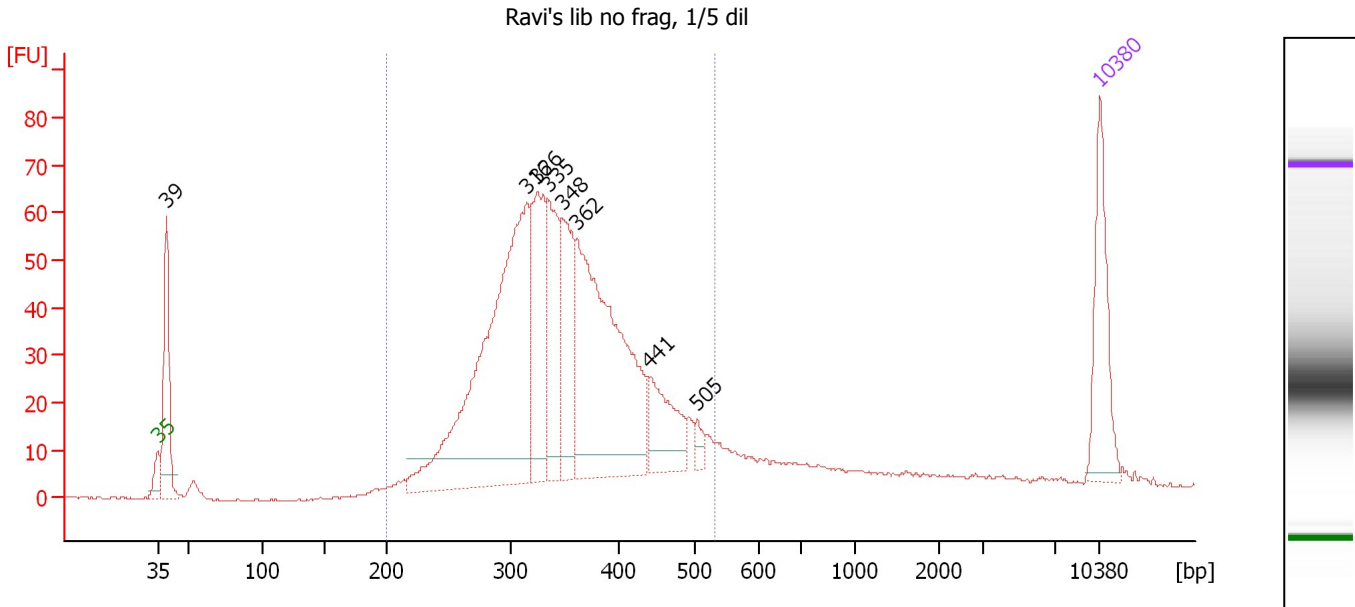
Region table for sample 6 : AC 6, 1/5 dil

From [bp]	To [bp]	Average Size [bp]	Molarity [pmol/l]	Conc. [pg/µl]	Corr. Area	% of Total	Size distribution in CV [%]	Color
147	160	152	2,496.6	249.85	97.7	3	2.4	

Assay Class: High Sensitivity DNA Assay
 Data Path: C:\...ents and Settings\Bioanalyzer\2012-12-10\2012-12-10_001.xad

Created: 12/10/2012 9:53:54 AM
 Modified: 12/10/2012 10:34:53 AM

Electropherogram Summary Continued ...



Overall Results for sample 7 : Ravi's lib no frag, 1/5 dil

Number of peaks found: 8 Corr. Area 1: 1,076.6
 Noise: 0.3

Peak table for sample 7 : Ravi's lib no frag, 1/5 dil

Peak	Size [bp]	Conc. [pg/μl]	Molarity [pmol/l]	Observations
1	35	125.00	5,411.3	Lower Marker
2	39	143.02	5,499.4	
3	316	523.67	2,514.5	
4	326	163.25	759.9	
5	335	117.09	529.8	
6	348	121.89	531.0	
7	362	371.03	1,553.5	
8	441	78.26	269.0	
9	505	12.33	37.0	
10	10,380	75.00	10.9	Upper Marker

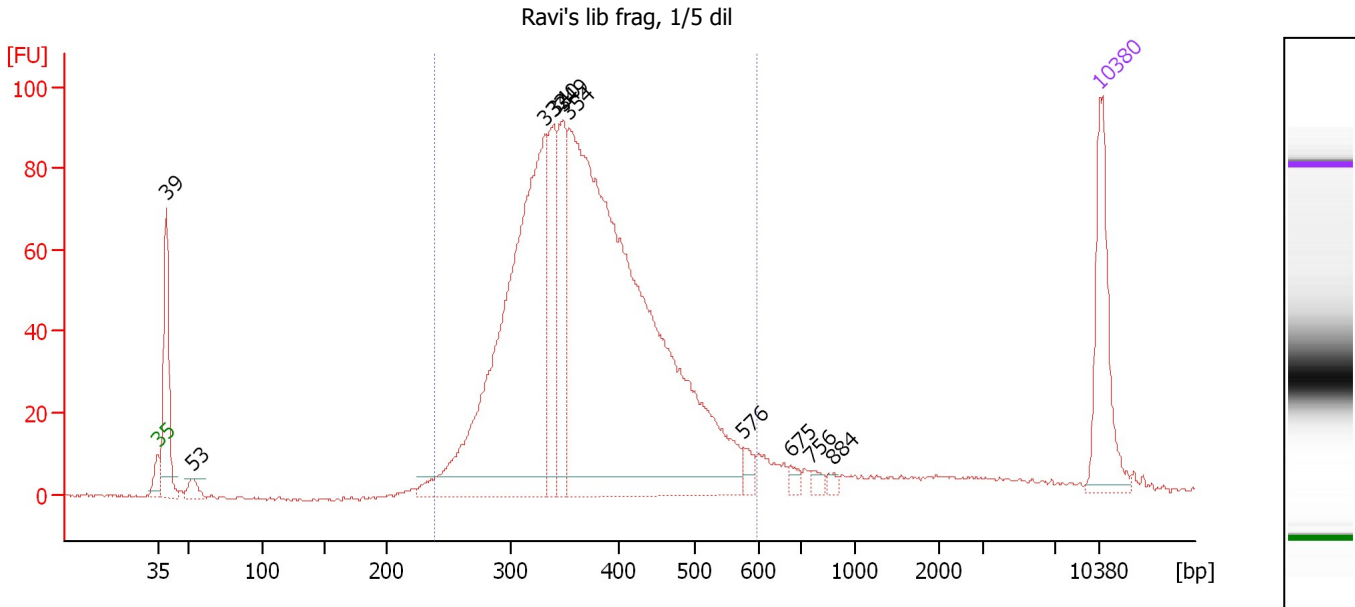
Region table for sample 7 : Ravi's lib no frag, 1/5 dil

From [bp]	To [bp]	Average Size [bp]	Molarity [pmol/l]	Conc. [pg/μl]	Corr. Area	% of Total	Size distribution in CV [%]	Color
200	532	352	7,183.9	1,592.36	1,076.6	82	18.6	Blue

Assay Class: High Sensitivity DNA Assay
 Data Path: C:\...ents and Settings\Bioanalyzer\2012-12-10\2012-12-10_001.xad

Created: 12/10/2012 9:53:54 AM
 Modified: 12/10/2012 10:34:53 AM

Electropherogram Summary Continued ...



Overall Results for sample 8 : Ravi's lib frag, 1/5 dil

Number of peaks found: 10 Corr. Area 1: 1,498.2
 Noise: 0.4

Peak table for sample 8 : Ravi's lib frag, 1/5 dil

Peak	Size [bp]	Conc. [pg/μl]	Molarity [pmol/l]	Observations
1	35	125.00	5,411.3	Lower Marker
2	39	133.59	5,136.5	
3	53	16.29	464.6	
4	332	551.50	2,515.4	
5	340	112.01	498.5	
6	349	110.77	480.6	
7	354	952.01	4,069.0	
8	576	12.03	31.6	
9	675	7.44	16.7	
10	756	6.98	14.0	
11	884	4.31	7.4	
12	10,380	75.00	10.9	Upper Marker

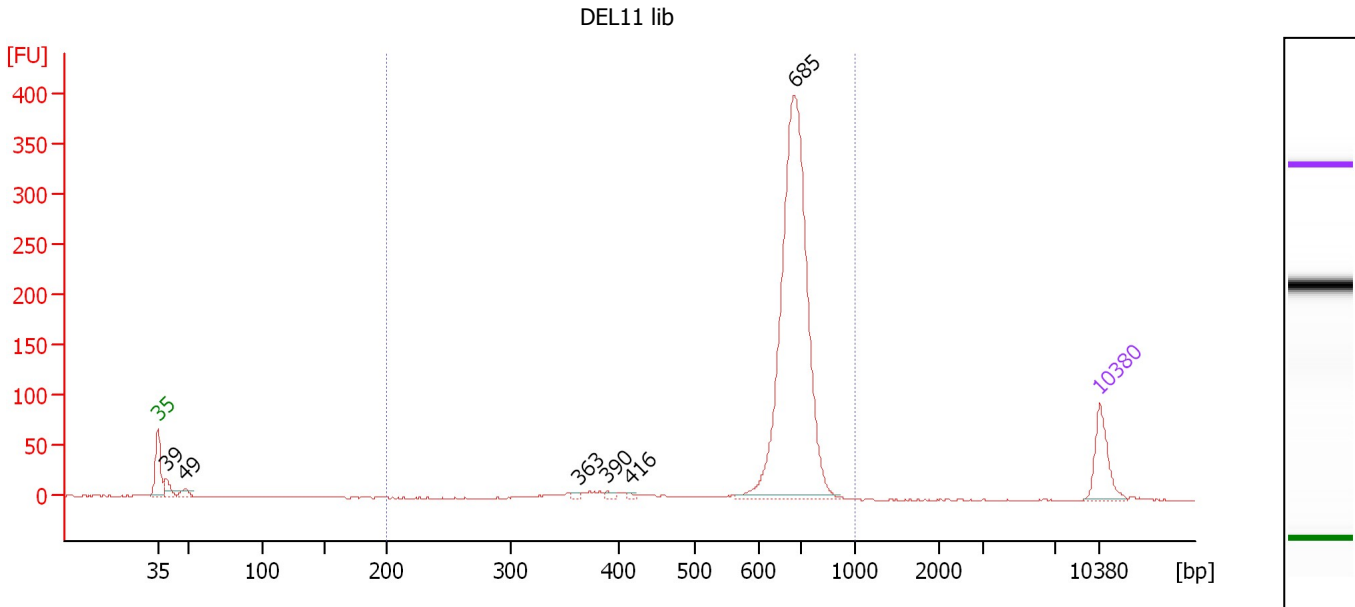
Region table for sample 8 : Ravi's lib frag, 1/5 dil

From [bp]	To [bp]	Average Size [bp]	Molarity [pmol/l]	Conc. [pg/μl]	Corr. Area	% of Total	Size distribution in CV [%]	Color
239	597	376	6,996.4	1,662.55	1,498.2	87	18.7	Blue

Assay Class: High Sensitivity DNA Assay
 Data Path: C:\...ents and Settings\Bioanalyzer\2012-12-10\2012-12-10_001.xad

Created: 12/10/2012 9:53:54 AM
 Modified: 12/10/2012 10:34:53 AM

Electropherogram Summary Continued ...



Overall Results for sample 9 : DEL11 lib

Number of peaks found: 6 Corr. Area 1: 1,106.8
 Noise: 0.4

Peak table for sample 9 : DEL11 lib

Peak	Size [bp]	Conc. [pg/μl]	Molarity [pmol/l]	Observations
1	35	125.00	5,411.3	Lower Marker
2	39	37.08	1,424.7	
3	49	20.87	650.3	
4	363	7.67	32.0	
5	390	8.97	34.9	
6	416	6.18	22.5	
7	685	1,079.91	2,389.8	
8	10,380	75.00	10.9	Upper Marker

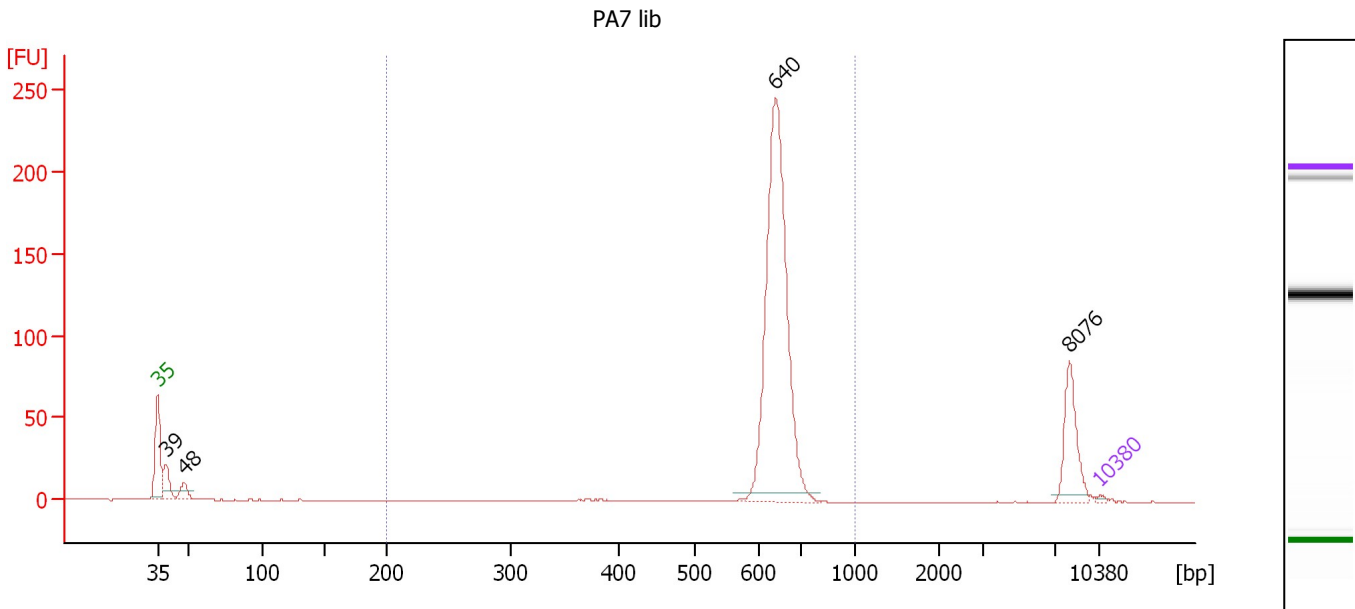
Region table for sample 9 : DEL11 lib

From [bp]	To [bp]	Average Size [bp]	Molarity [pmol/l]	Conc. [pg/μl]	Corr. Area	% of Total	Size distribution in CV [%]	Color
200	1,000	675	2,659.0	1,149.79	1,106.8	96	11.7	Blue

Assay Class: High Sensitivity DNA Assay
 Data Path: C:\...ents and Settings\Bioanalyzer\2012-12-10\2012-12-10_001.xad

Created: 12/10/2012 9:53:54 AM
 Modified: 12/10/2012 10:34:53 AM

Electropherogram Summary Continued ...



Overall Results for sample 10 : PA7 lib

Number of peaks found: 4 Corr. Area 1: 523.4
 Noise: 0.2

Peak table for sample 10 : PA7 lib

Peak	Size [bp]	Conc. [pg/μl]	Molarity [pmol/l]	Observations
1	35	125.00	5,411.3	Lower Marker
2	39	1,413.01	54,912.1	
3	48	792.19	24,906.8	
4	640	16,257.65	38,504.7	
5	8,076	2,189.22	410.7	
6	10,380	75.00	10.9	Upper Marker

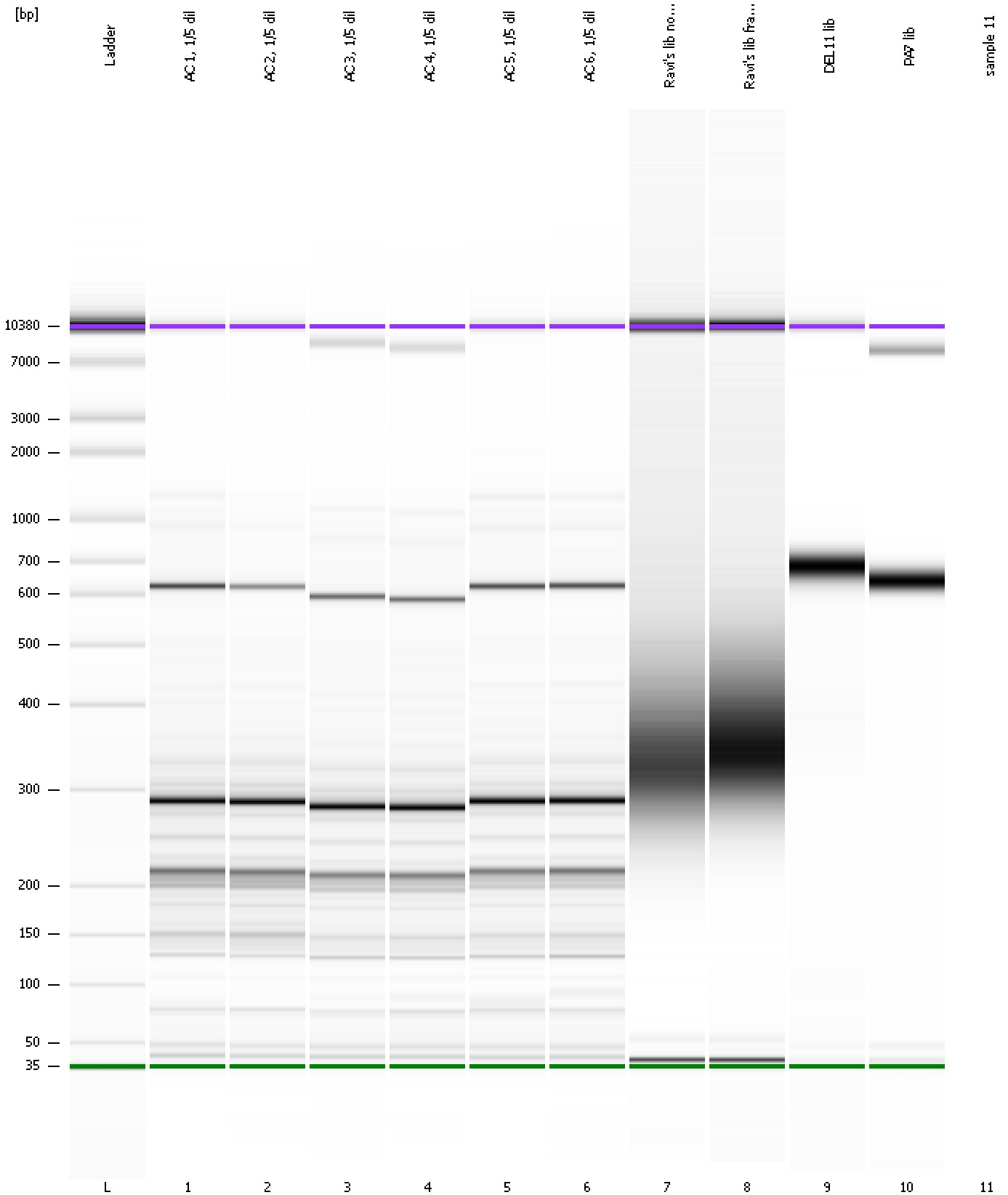
Region table for sample 10 : PA7 lib

From [bp]	To [bp]	Average Size [bp]	Molarity [pmol/l]	Conc. [pg/μl]	Corr. Area	% of Total	Size distribution in CV [%]	Color
200	1,000	640	39,551.7	16,578.97	523.4	78	6.2	Blue

Assay Class: High Sensitivity DNA Assay
Data Path: C:\...ents and Settings\Bioanalyzer\2012-12-10\2012-12-10_001.xad

Created: 12/10/2012 9:53:54 AM
Modified: 12/10/2012 10:34:53 AM

Gel Image



Assay Class: High Sensitivity DNA Assay
Data Path: C:\...ents and Settings\Bioanalyzer\2012-12-10\2012-12-10_001.xad

Created: 12/10/2012 9:53:54 AM
Modified: 12/10/2012 10:34:53 AM

Invalid Samples

Sample 11 has not been run, no results available.

Assay Class: High Sensitivity DNA Assay
 Data Path: C:\...ents and Settings\Bioanalyzer\2012-12-10\2012-12-10_001.xad

Created: 12/10/2012 9:53:54 AM
 Modified: 12/10/2012 10:34:53 AM

Run Logbook

Description	Number	Source	Category	Sub Category	Time	Time Zone	User	Host
Run ended on port 1 (Number of wells acquired: 11)		Instrument	Run		12/10/2012 10:32:19 AM	(GMT --08:00) Pacific Standard Time	UC Davis	D8XSMGH1
Run started on port 1 (File: C:\Documents and Settings\Bioanalyzer\2012-12-10\2012-12-10_001.xad)		Instrument	Run		12/10/2012 9:53:59 AM	(GMT --08:00) Pacific Standard Time	UC Davis	D8XSMGH1
Product Number : G2938B		Instrument	Run		12/10/2012 9:53:59 AM	(GMT --08:00) Pacific Standard Time	UC Davis	D8XSMGH1
Name :		Instrument	Run		12/10/2012 9:53:59 AM	(GMT --08:00) Pacific Standard Time	UC Davis	D8XSMGH1
Vendor : Agilent Technologies		Instrument	Run		12/10/2012 9:53:59 AM	(GMT --08:00) Pacific Standard Time	UC Davis	D8XSMGH1
Serial# : DE13701086		Instrument	Run		12/10/2012 9:53:59 AM	(GMT --08:00) Pacific Standard Time	UC Davis	D8XSMGH1
Firmware : C.01.069		Instrument	Run		12/10/2012 9:53:59 AM	(GMT --08:00) Pacific Standard Time	UC Davis	D8XSMGH1
Cartridge : Electrode		Instrument	Run		12/10/2012 9:53:59 AM	(GMT --08:00) Pacific Standard Time	UC Davis	D8XSMGH1