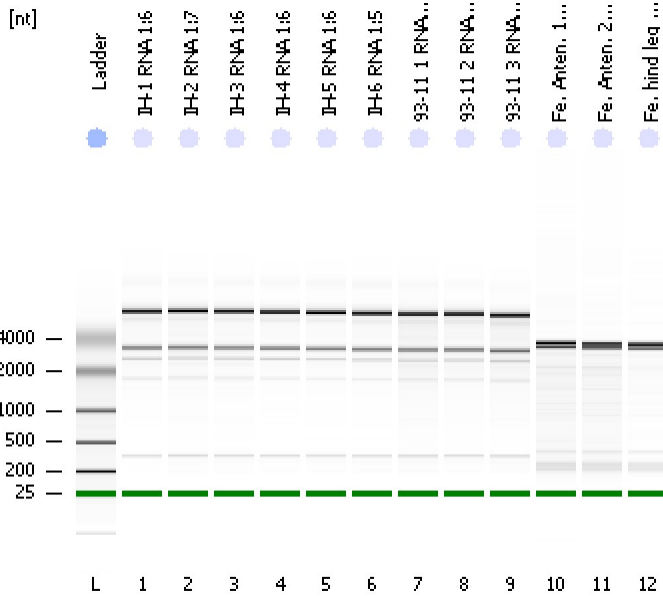


Assay Class: Eukaryote Total RNA Nano  
 Data Path: C:\...ents and Settings\Bioanalyzer\2012-12-10\2012-12-10\_002.xad

Created: 12/10/2012 12:34:47 PM  
 Modified: 12/10/2012 1:00:16 PM

**Electrophoresis File Run Summary**



Instrument Information:

Instrument Name: DE13701086      Firmware: C.01.069  
 Serial#: DE13701086      Type: G2938B

Assay Information:

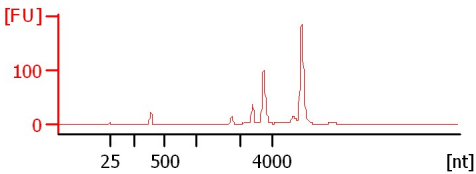
Assay Origin Path: C:\Program Files\Agilent\2100 bioanalyzer\2100 expert\assays\RNA\Eukaryote Total RNA Nano Series II.xsy  
 Assay Class: Eukaryote Total RNA Nano  
 Version: 2.6  
 Assay Comments: Total RNA Analysis ng sensitivity (Eukaryote)

© Copyright 2003 - 2009 Agilent Technologies, Inc.

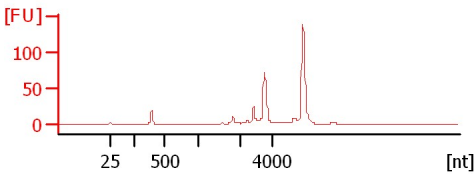
Chip Information:

Chip Lot #:   
 Reagent Kit Lot #:   
 Chip Comments:

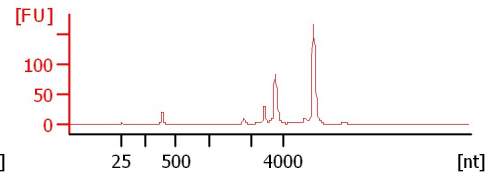
**IH-1 RNA 1:6**  
 RIN: 8.70



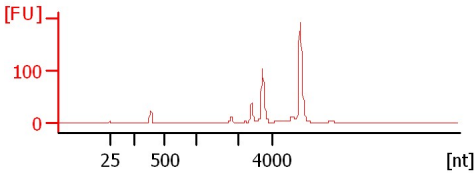
**IH-2 RNA 1:7**  
 RIN: 8.60



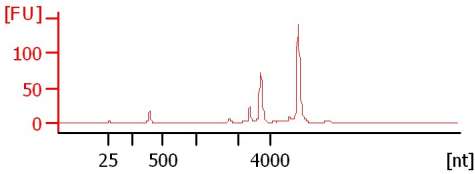
**IH-3 RNA 1:6**  
 RIN: 8.70



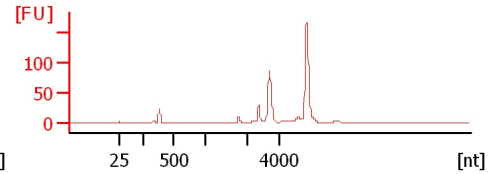
**IH-4 RNA 1:6**  
 RIN: 8.90



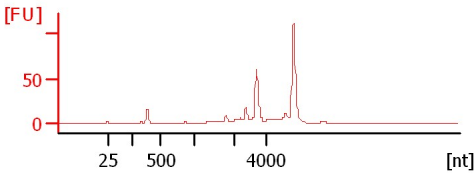
**IH-5 RNA 1:6**  
 RIN: 8.90



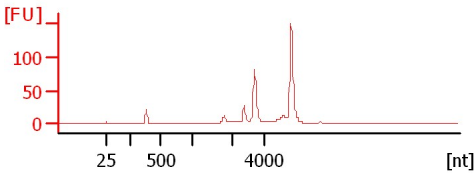
**IH-6 RNA 1:5**  
 RIN: 8.90



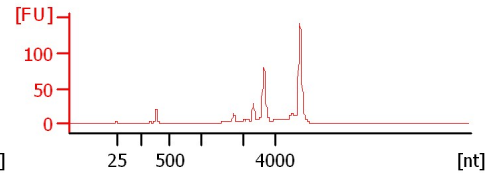
**93-11 1 RNA 1:6**  
 RIN: 8.30



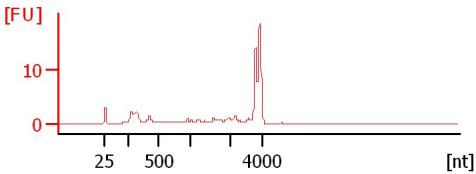
**93-11 2 RNA 1:5**  
 RIN: 8.60



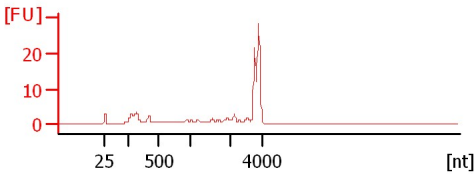
**93-11 3 RNA 1:5**  
 RIN: 8.40



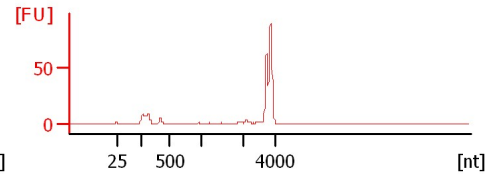
**Fe. Anten. 1 RNA**  
 RIN: 5.50



**Fe. Anten. 2 RNA**  
 RIN: 5.50



**Fe. hind leg RNA 1:2**  
 RIN: 6.30



Assay Class: Eukaryote Total RNA Nano  
 Data Path: C:\...ents and Settings\Bioanalyzer\2012-12-10\2012-12-10\_002.xad

Created: 12/10/2012 12:34:47 PM  
 Modified: 12/10/2012 1:00:16 PM

**Electrophoresis File Run Summary (Chip Summary)**

Sample Name	Sample Comment	Status	Result Label	Result Color
IH-1 RNA 1:6		✓	RIN: 8.70	
IH-2 RNA 1:7		✓	RIN: 8.60	
IH-3 RNA 1:6		✓	RIN: 8.70	
IH-4 RNA 1:6		✓	RIN: 8.90	
IH-5 RNA 1:6		✓	RIN: 8.90	
IH-6 RNA 1:5		✓	RIN: 8.90	
93-11 1 RNA 1:6		✓	RIN: 8.30	
93-11 2 RNA 1:5		✓	RIN: 8.60	
93-11 3 RNA 1:5		✓	RIN: 8.40	
Fe. Anten. 1 RNA		✓	RIN: 5.50	
Fe. Anten. 2 RNA		✓	RIN: 5.50	
Fe. hind leg RNA 1:2		✓	RIN: 6.30	
Ladder		✓	All Other Samples	

**Chip Lot #**

**Reagent Kit Lot #**

**Chip Comments :**

Assay Class: Eukaryote Total RNA Nano  
Data Path: C:\...ents and Settings\Bioanalyzer\2012-12-10\2012-12-10\_002.xad

Created: 12/10/2012 12:34:47 PM  
Modified: 12/10/2012 1:00:16 PM

## Electrophoresis Assay Details

### General Analysis Settings

Number of Available Sample and Ladder Wells (Max.) : 13  
Minimum Visible Range [s] : 17  
Maximum Visible Range [s] : 70  
Start Analysis Time Range [s] : 19  
End Analysis Time Range [s] : 69  
Ladder Concentration [ng/ $\mu$ l] : 150  
Lower Marker Concentration [ng/ $\mu$ l] : 0  
Upper Marker Concentration [ng/ $\mu$ l] : 0  
Used Lower Marker for Quantitation  
Standard Curve Fit is Logarithmic  
Show Data Aligned to Lower Marker

### Integrator Settings

Integration Start Time [s] : 19  
Integration End Time [s] : 69  
Slope Threshold : 0.6  
Height Threshold [FU] : 0.5  
Area Threshold : 0.2  
Width Threshold [s] : 0.5  
Baseline Plateau [s] : 6

### Filter Settings

Filter Width [s] : 0.5  
Polynomial Order : 4

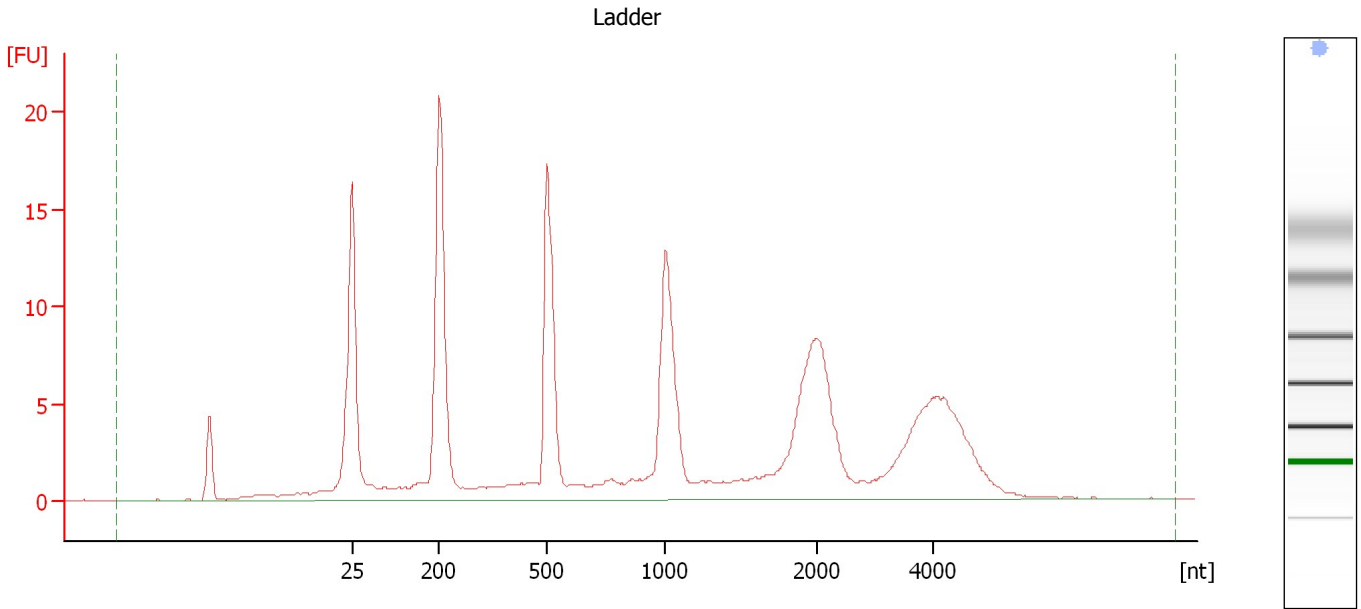
### Ladder

Ladder Peak	Size
1	25
2	200
3	500
4	1000
5	2000
6	4000

Assay Class: Eukaryote Total RNA Nano  
Data Path: C:\...ents and Settings\Bioanalyzer\2012-12-10\2012-12-10\_002.xad

Created: 12/10/2012 12:34:47 PM  
Modified: 12/10/2012 1:00:16 PM

**Electropherogram Summary**



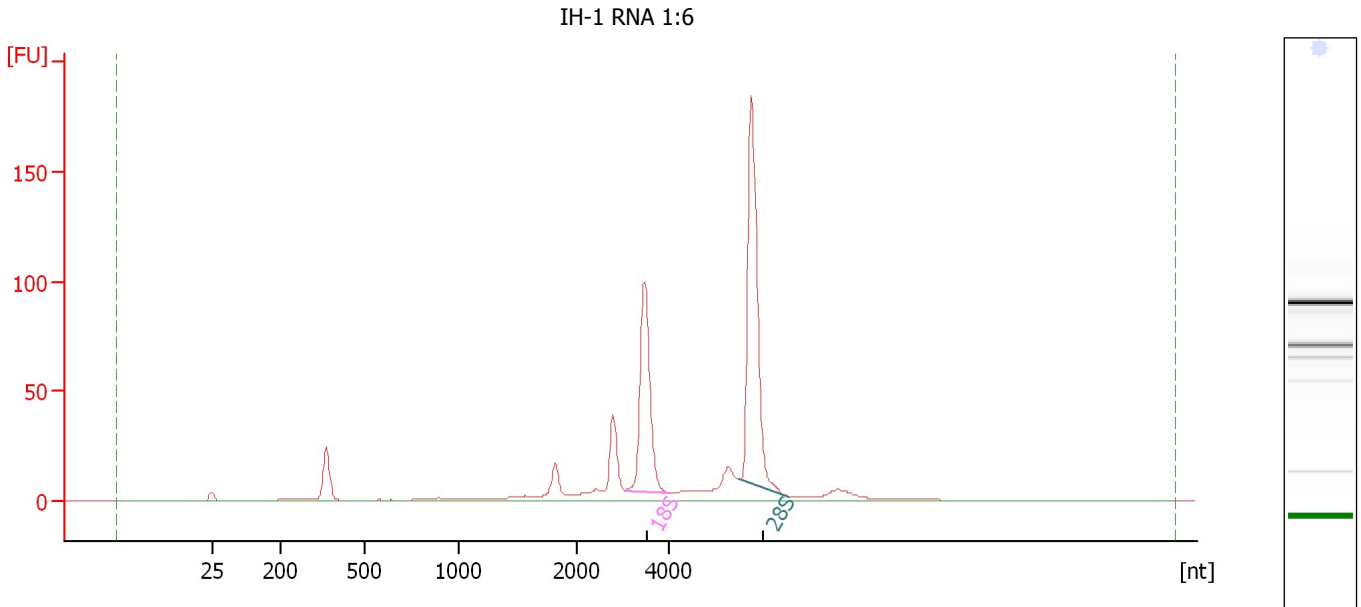
**Overall Results for Ladder**

RNA Area:	177.1	Result Flagging Color:	<span style="background-color: #add8e6; border: 1px solid black; display: inline-block; width: 20px; height: 10px;"></span>
RNA Concentration:	150 ng/μl	Result Flagging Label:	All Other Samples

Assay Class: Eukaryote Total RNA Nano  
 Data Path: C:\...ents and Settings\Bioanalyzer\2012-12-10\2012-12-10\_002.xad

Created: 12/10/2012 12:34:47 PM  
 Modified: 12/10/2012 1:00:16 PM

**Electropherogram Summary Continued ...**



**Overall Results for sample 1 : IH-1 RNA 1:6**

RNA Area:	560.8	RNA Integrity Number (RIN):	8.7 (B.02.08, Anomaly Threshold(s) manually adapted)
RNA Concentration:	475 ng/μl	Result Flagging Color:	<span style="background-color: #ccccff; border: 1px solid black; display: inline-block; width: 20px; height: 10px;"></span>
rRNA Ratio [28s / 18s]:	1.6	Result Flagging Label:	RIN: 8.70

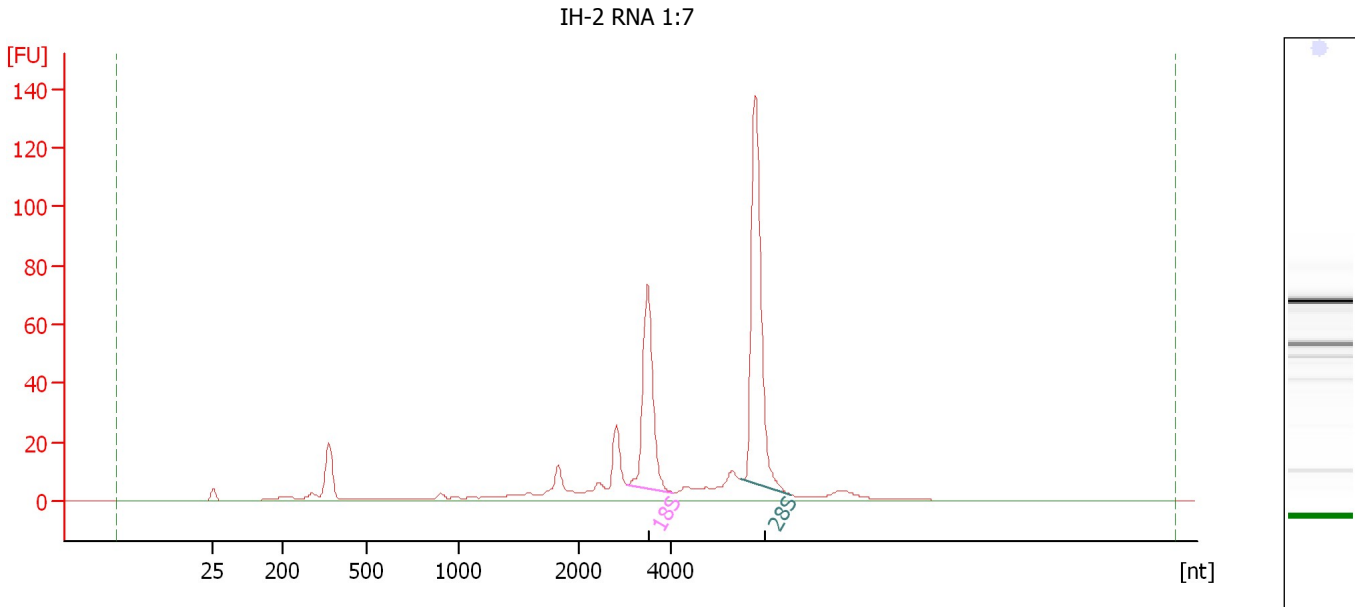
**Fragment table for sample 1 : IH-1 RNA 1:6**

Name	Start Size [nt]	End Size [nt]	Area	% of total Area
18S	3,061	4,042	112.5	20.1
28S	5,538	6,613	182.9	32.6

Assay Class: Eukaryote Total RNA Nano  
Data Path: C:\...ents and Settings\Bioanalyzer\2012-12-10\2012-12-10\_002.xad

Created: 12/10/2012 12:34:47 PM  
Modified: 12/10/2012 1:00:16 PM

**Electropherogram Summary Continued ...**



**Overall Results for sample 2 : IH-2 RNA 1:7**

RNA Area: 451.5                      RNA Integrity Number (RIN): 8.6 (B.02.08)  
RNA Concentration: 382 ng/μl              Result Flagging Color:   
rRNA Ratio [28s / 18s]: 1.7              Result Flagging Label: RIN: 8.60

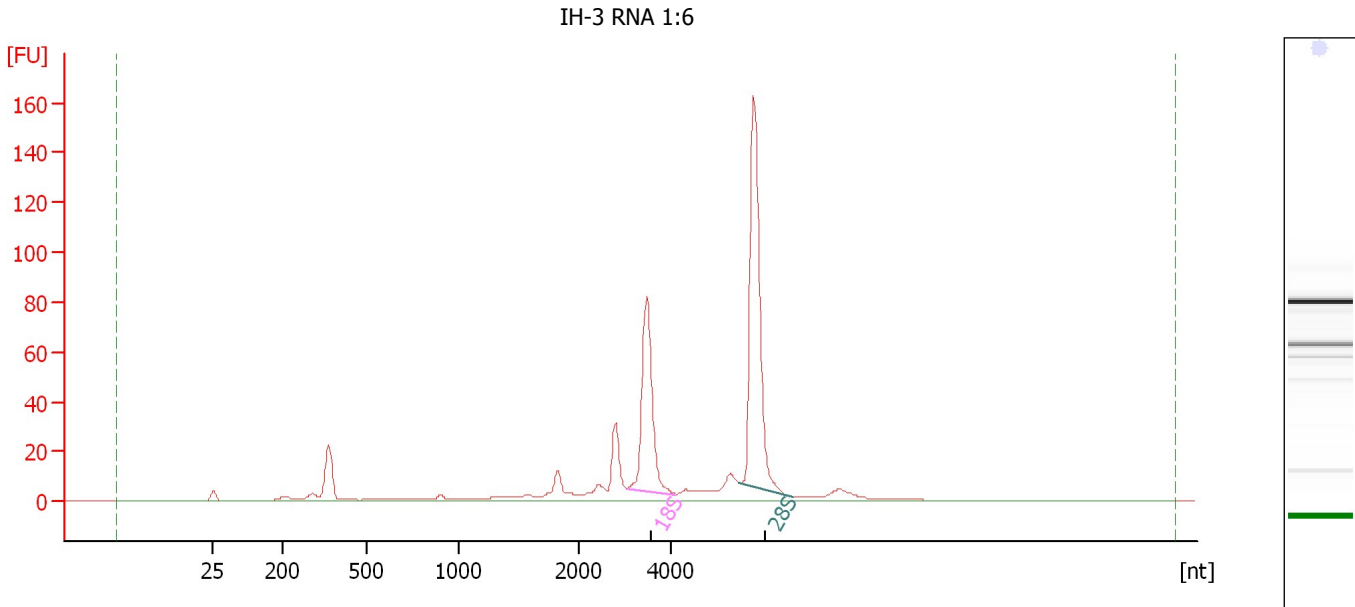
**Fragment table for sample 2 : IH-2 RNA 1:7**

Name	Start Size [nt]	End Size [nt]	Area	% of total Area
18S	3,065	4,045	83.3	18.5
28S	5,537	6,633	138.4	30.7

Assay Class: Eukaryote Total RNA Nano  
Data Path: C:\...ents and Settings\Bioanalyzer\2012-12-10\2012-12-10\_002.xad

Created: 12/10/2012 12:34:47 PM  
Modified: 12/10/2012 1:00:16 PM

**Electropherogram Summary Continued ...**



**Overall Results for sample 3 : IH-3 RNA 1:6**

RNA Area:	495.4	RNA Integrity Number (RIN):	8.7 (B.02.08, Anomaly Threshold(s) manually adapted)
RNA Concentration:	420 ng/μl	Result Flagging Color:	<span style="background-color: #ccccff; border: 1px solid black; display: inline-block; width: 20px; height: 10px;"></span>
rRNA Ratio [28s / 18s]:	1.7	Result Flagging Label:	RIN: 8.70

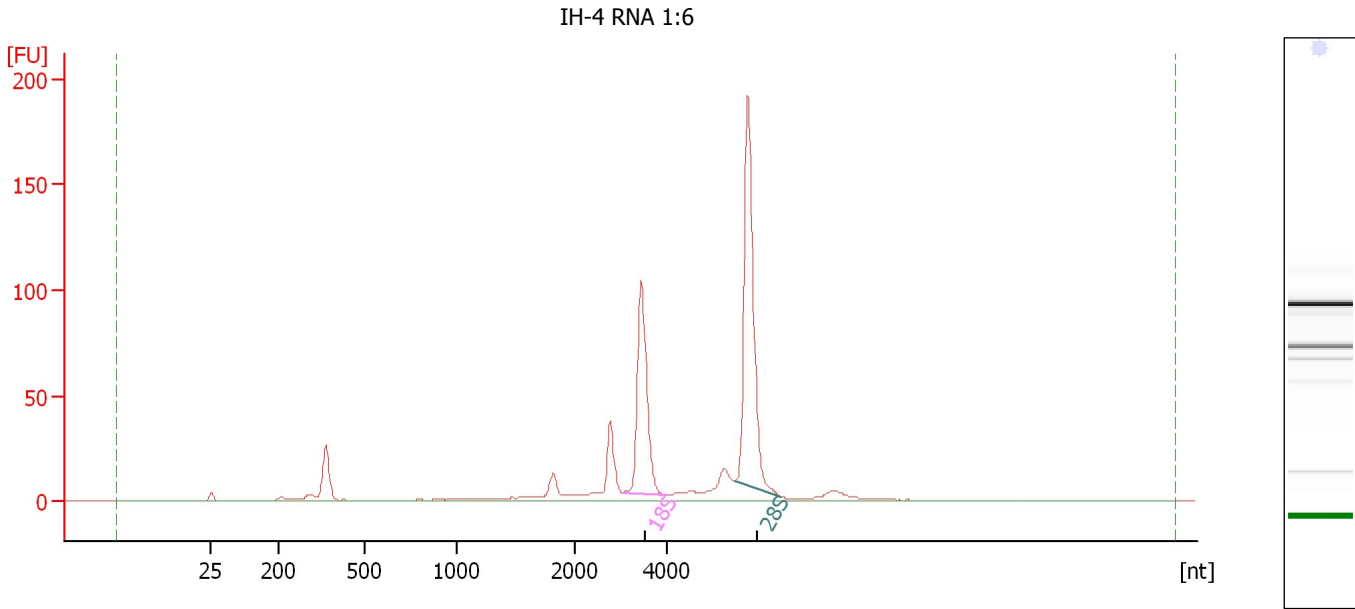
**Fragment table for sample 3 : IH-3 RNA 1:6**

Name	Start Size [nt]	End Size [nt]	Area	% of total Area
18S	3,065	4,115	95.1	19.2
28S	5,514	6,656	163.4	33.0

Assay Class: Eukaryote Total RNA Nano  
Data Path: C:\...ents and Settings\Bioanalyzer\2012-12-10\2012-12-10\_002.xad

Created: 12/10/2012 12:34:47 PM  
Modified: 12/10/2012 1:00:16 PM

**Electropherogram Summary Continued ...**



**Overall Results for sample 4 : IH-4 RNA 1:6**

RNA Area: 552.5                      RNA Integrity Number (RIN): 8.9 (B.02.08, Anomaly Threshold(s) manually adapted)  
RNA Concentration: 468 ng/μl  
rRNA Ratio [28s / 18s]: 1.6  
Result Flagging Color:   
Result Flagging Label: RIN: 8.90

**Fragment table for sample 4 : IH-4 RNA 1:6**

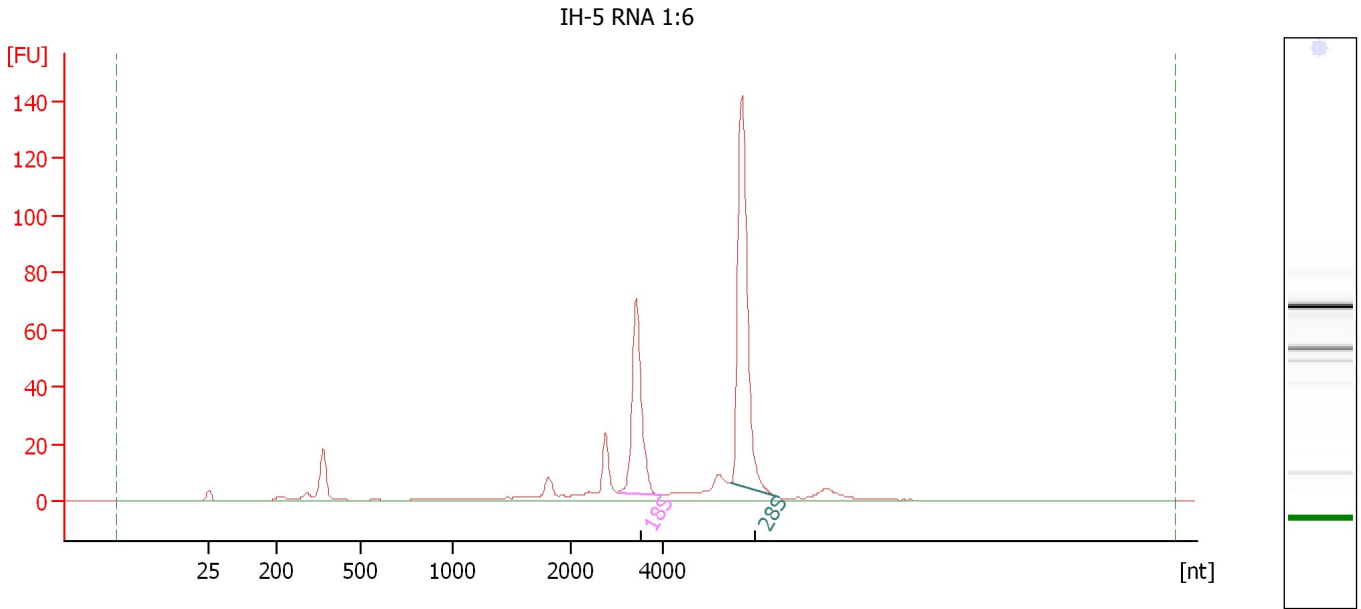
Name	Start Size [nt]	End Size [nt]	Area	% of total Area
18S	3,056	3,993	115.4	20.9
28S	5,491	6,522	190.2	34.4



Assay Class: Eukaryote Total RNA Nano  
 Data Path: C:\...ents and Settings\Bioanalyzer\2012-12-10\2012-12-10\_002.xad

Created: 12/10/2012 12:34:47 PM  
 Modified: 12/10/2012 1:00:16 PM

**Electropherogram Summary Continued ...**



**Overall Results for sample 5 : IH-5 RNA 1:6**

RNA Area:	399.5	RNA Integrity Number (RIN):	8.9 (B.02.08, Anomaly Threshold(s) manually adapted)
RNA Concentration:	338 ng/μl	Result Flagging Color:	<span style="background-color: #ccccff; border: 1px solid black; display: inline-block; width: 20px; height: 10px;"></span>
rRNA Ratio [28s / 18s]:	1.8	Result Flagging Label:	RIN: 8.90

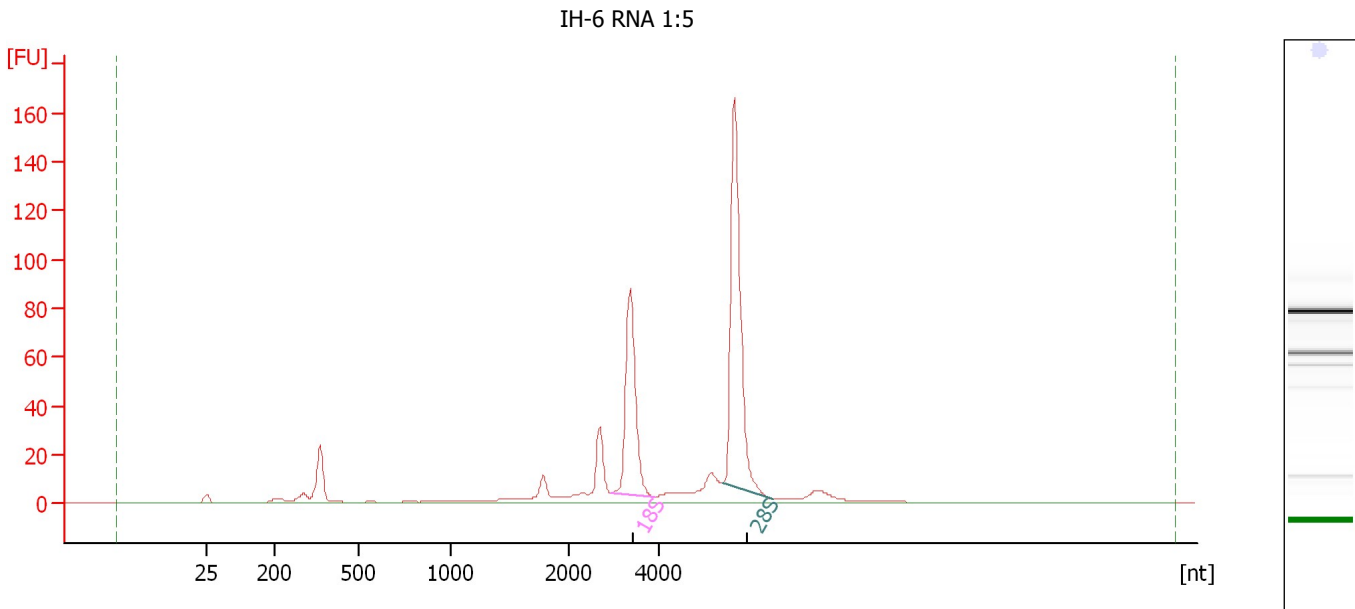
**Fragment table for sample 5 : IH-5 RNA 1:6**

Name	Start Size [nt]	End Size [nt]	Area	% of total Area
18S	3,024	3,988	80.7	20.2
28S	5,493	6,551	143.4	35.9

Assay Class: Eukaryote Total RNA Nano  
 Data Path: C:\...ents and Settings\Bioanalyzer\2012-12-10\2012-12-10\_002.xad

Created: 12/10/2012 12:34:47 PM  
 Modified: 12/10/2012 1:00:16 PM

**Electropherogram Summary Continued ...**



**Overall Results for sample 6 : IH-6 RNA 1:5**

RNA Area:	505.9	RNA Integrity Number (RIN):	8.9 (B.02.08, Anomaly Threshold(s) manually adapted)
RNA Concentration:	429 ng/μl		
rRNA Ratio [28s / 18s]:	1.7	Result Flagging Color:	<span style="background-color: #ccccff; border: 1px solid black; display: inline-block; width: 20px; height: 10px;"></span>
		Result Flagging Label:	RIN: 8.90

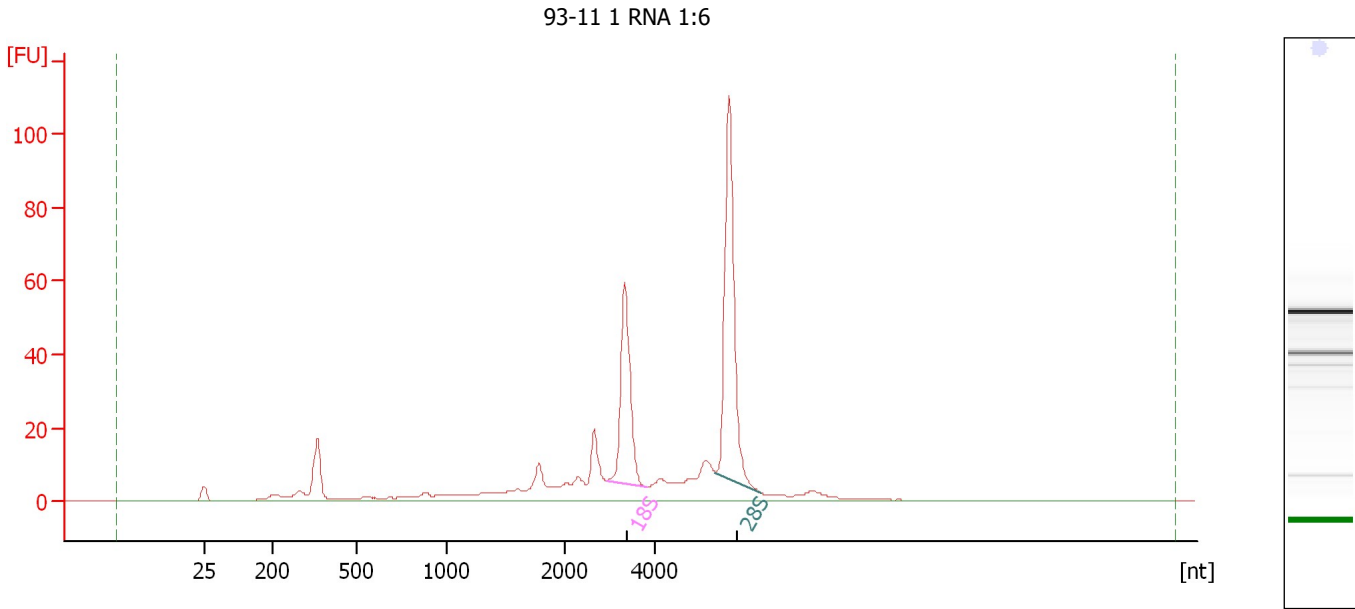
**Fragment table for sample 6 : IH-6 RNA 1:5**

Name	Start Size [nt]	End Size [nt]	Area	% of total Area
18S	2,967	3,912	100.5	19.9
28S	5,423	6,509	173.4	34.3

Assay Class: Eukaryote Total RNA Nano  
Data Path: C:\...ents and Settings\Bioanalyzer\2012-12-10\2012-12-10\_002.xad

Created: 12/10/2012 12:34:47 PM  
Modified: 12/10/2012 1:00:16 PM

**Electropherogram Summary Continued ...**



**Overall Results for sample 7 : 93-11 1 RNA 1:6**

RNA Area: 408.1                      RNA Integrity Number (RIN): 8.3 (B.02.08)  
RNA Concentration: 346 ng/μl              Result Flagging Color:   
rRNA Ratio [28s / 18s]: 1.7              Result Flagging Label: RIN: 8.30

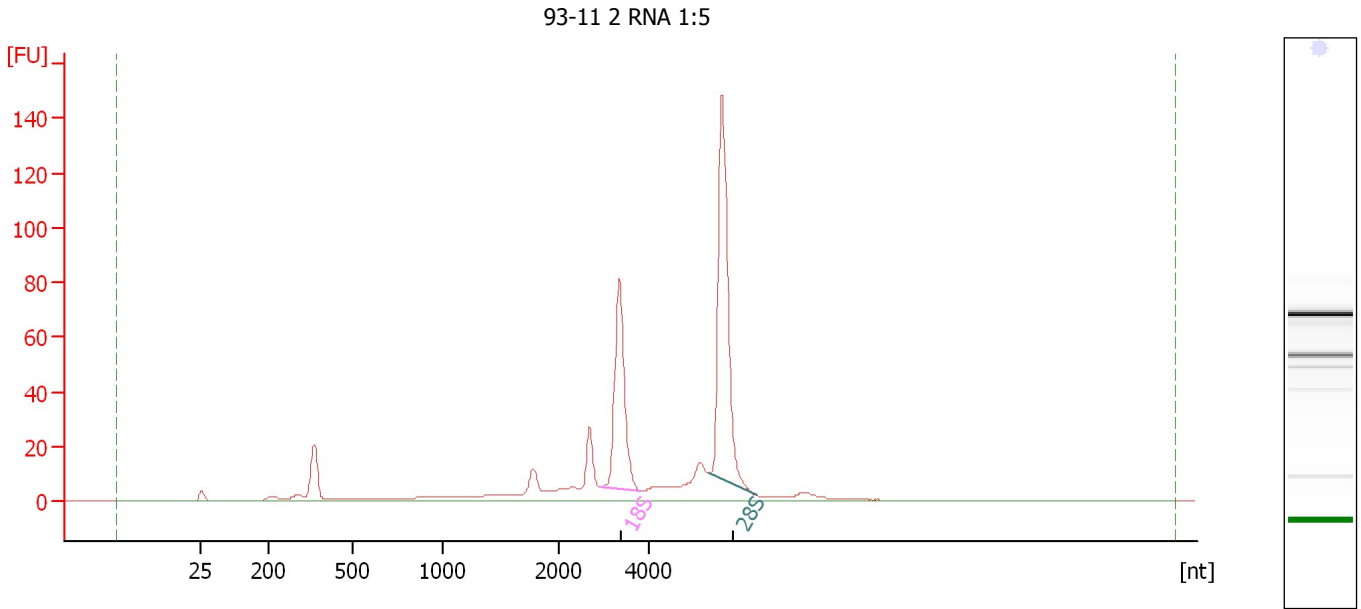
**Fragment table for sample 7 : 93-11 1 RNA 1:6**

Name	Start Size [nt]	End Size [nt]	Area	% of total Area
18S	2,958	3,811	63.7	15.6
28S	5,353	6,349	108.0	26.5

Assay Class: Eukaryote Total RNA Nano  
Data Path: C:\...ents and Settings\Bioanalyzer\2012-12-10\2012-12-10\_002.xad

Created: 12/10/2012 12:34:47 PM  
Modified: 12/10/2012 1:00:16 PM

**Electropherogram Summary Continued ...**



**Overall Results for sample 8 : 93-11 2 RNA 1:5**

RNA Area: 496.7                      RNA Integrity Number (RIN): 8.6 (B.02.08)  
RNA Concentration: 421 ng/μl                      Result Flagging Color:   
rRNA Ratio [28s / 18s]: 1.6                      Result Flagging Label: RIN: 8.60

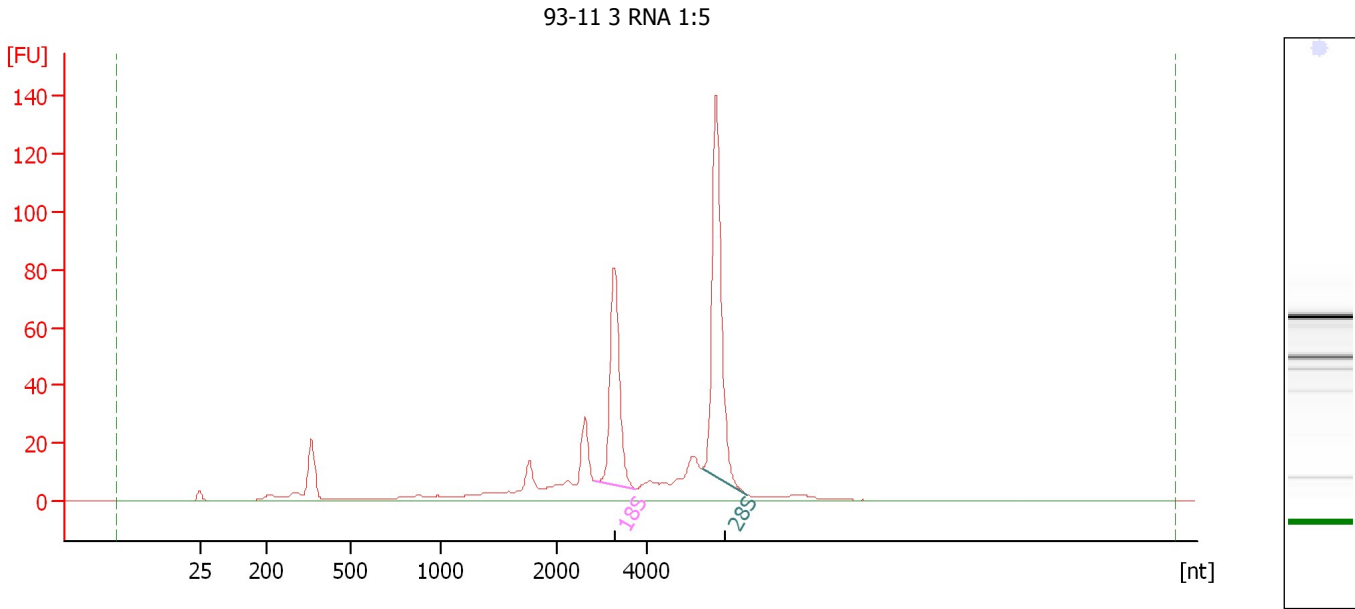
**Fragment table for sample 8 : 93-11 2 RNA 1:5**

Name	Start Size [nt]	End Size [nt]	Area	% of total Area
18S	2,943	3,850	92.7	18.7
28S	5,354	6,404	152.1	30.6

Assay Class: Eukaryote Total RNA Nano  
Data Path: C:\...ents and Settings\Bioanalyzer\2012-12-10\2012-12-10\_002.xad

Created: 12/10/2012 12:34:47 PM  
Modified: 12/10/2012 1:00:16 PM

**Electropherogram Summary Continued ...**



**Overall Results for sample 9 : 93-11 3 RNA 1:5**

RNA Area: 512.7 RNA Integrity Number (RIN): 8.4 (B.02.08)  
RNA Concentration: 434 ng/μl Result Flagging Color:   
rRNA Ratio [28s / 18s]: 1.6 Result Flagging Label: RIN: 8.40

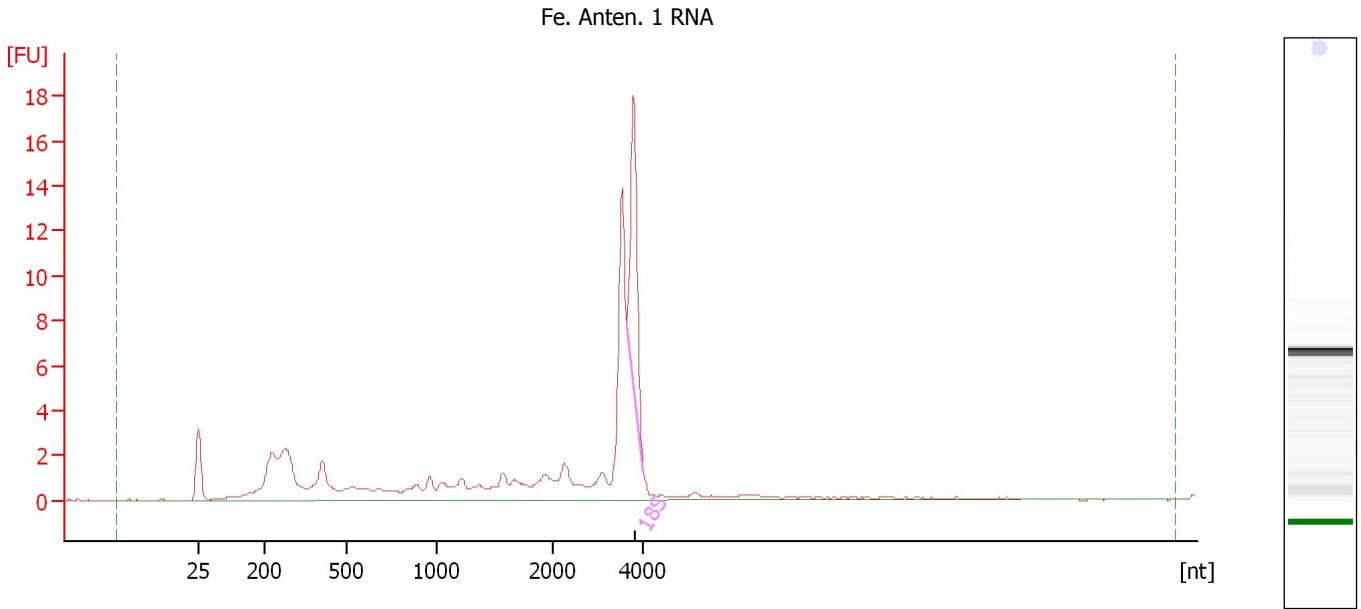
**Fragment table for sample 9 : 93-11 3 RNA 1:5**

Name	Start Size [nt]	End Size [nt]	Area	% of total Area
18S	2,867	3,752	87.4	17.0
28S	5,258	6,239	142.0	27.7

Assay Class: Eukaryote Total RNA Nano  
 Data Path: C:\...ents and Settings\Bioanalyzer\2012-12-10\2012-12-10\_002.xad

Created: 12/10/2012 12:34:47 PM  
 Modified: 12/10/2012 1:00:16 PM

**Electropherogram Summary Continued ...**



**Overall Results for sample 10 : Fe. Anten. 1 RNA**

RNA Area:	75.9	RNA Integrity Number (RIN):	5.5 (B.02.08)
RNA Concentration:	64 ng/μl	Result Flagging Color:	<span style="background-color: #ccccff; border: 1px solid black; display: inline-block; width: 20px; height: 10px;"></span>
rRNA Ratio [28s / 18s]:	0.0	Result Flagging Label:	RIN: 5.50

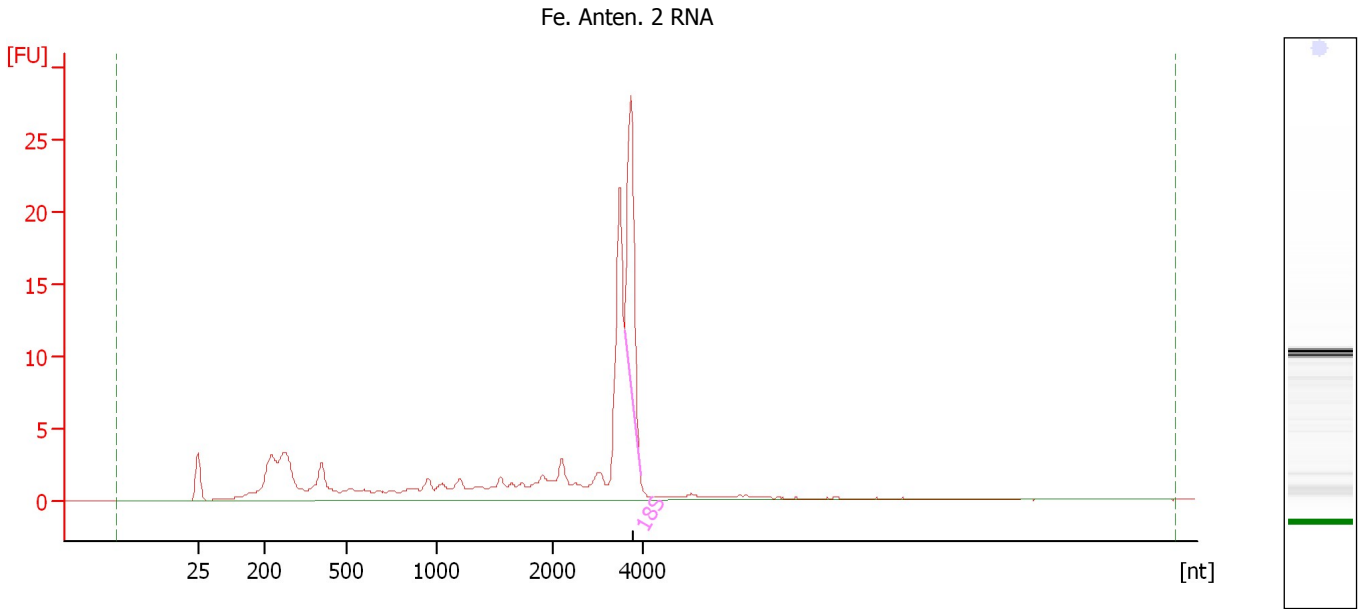
**Fragment table for sample 10 : Fe. Anten. 1 RNA**

Name	Start Size [nt]	End Size [nt]	Area	% of total Area
18S	3,649	4,034	10.4	13.8

Assay Class: Eukaryote Total RNA Nano  
Data Path: C:\...ents and Settings\Bioanalyzer\2012-12-10\2012-12-10\_002.xad

Created: 12/10/2012 12:34:47 PM  
Modified: 12/10/2012 1:00:16 PM

**Electropherogram Summary Continued ...**



**Overall Results for sample 11 : Fe. Anten. 2 RNA**

RNA Area:	113.5	RNA Integrity Number (RIN):	5.5 (B.02.08)
RNA Concentration:	96 ng/μl	Result Flagging Color:	<span style="background-color: #ccccff; border: 1px solid black; display: inline-block; width: 20px; height: 10px;"></span>
rRNA Ratio [28s / 18s]:	0.0	Result Flagging Label:	RIN: 5.50

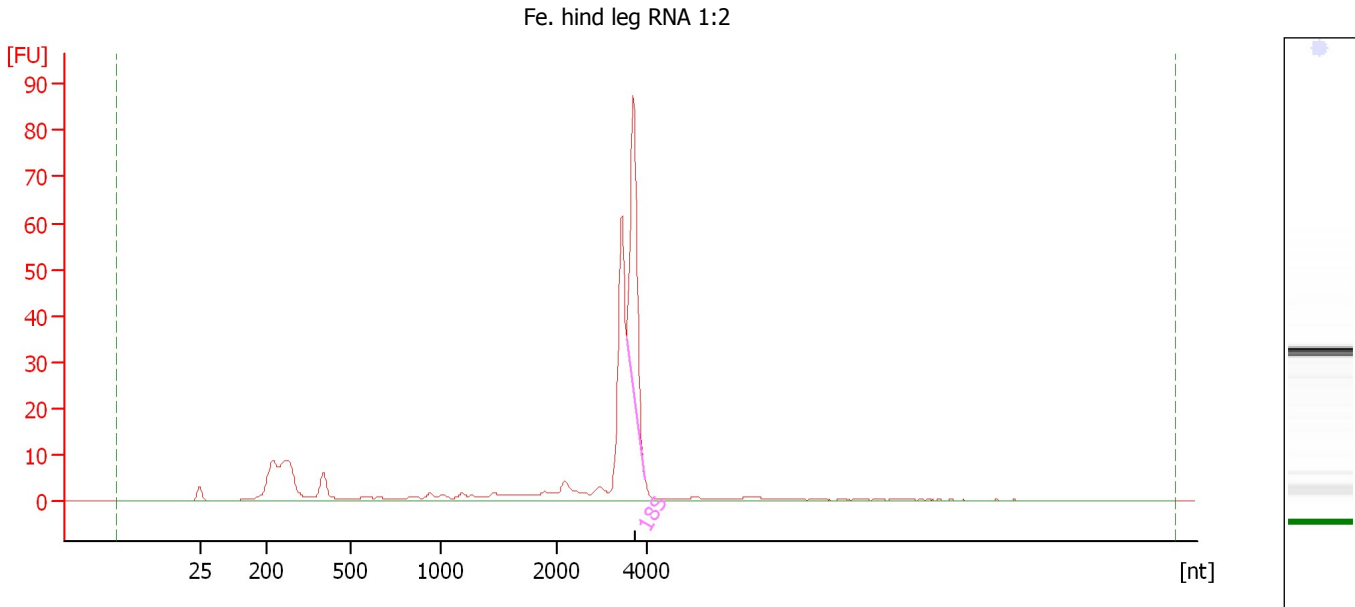
**Fragment table for sample 11 : Fe. Anten. 2 RNA**

Name	Start Size [nt]	End Size [nt]	Area	% of total Area
18S	3,601	3,962	15.7	13.8

Assay Class: Eukaryote Total RNA Nano  
 Data Path: C:\...ents and Settings\Bioanalyzer\2012-12-10\2012-12-10\_002.xad

Created: 12/10/2012 12:34:47 PM  
 Modified: 12/10/2012 1:00:16 PM

**Electropherogram Summary Continued ...**



**Overall Results for sample 12 : Fe. hind leg RNA 1:2**

RNA Area:	253.8	RNA Integrity Number (RIN):	6.3 (B.02.08, Anomaly Threshold(s) manually adapted)
RNA Concentration:	215 ng/μl	Result Flagging Color:	<span style="background-color: #ccccff; border: 1px solid black; display: inline-block; width: 20px; height: 10px;"></span>
rRNA Ratio [28s / 18s]:	0.0	Result Flagging Label:	RIN: 6.30

**Fragment table for sample 12 : Fe. hind leg RNA 1:2**

Name	Start Size [nt]	End Size [nt]	Area	% of total Area
18S	3,560	3,967	53.0	20.9



Assay Class: Eukaryote Total RNA Nano  
Data Path: C:\...ents and Settings\Bioanalyzer\2012-12-10\2012-12-10\_002.xad

Created: 12/10/2012 12:34:47 PM  
Modified: 12/10/2012 1:00:16 PM

**Gel Image**

