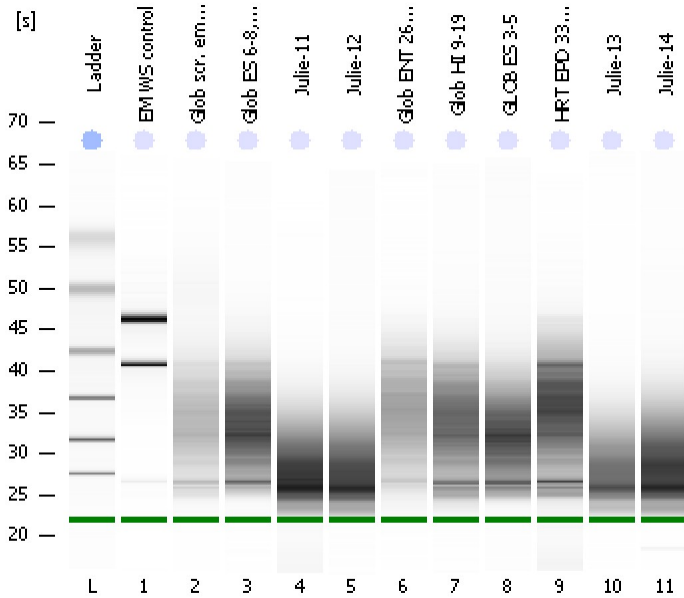


Assay Class: Eukaryote Total RNA Pico  
Data Path: C:\...ents and Settings\Bioanalyzer\2012-12-11\2012-12-11\_001.xad

Created: 12/11/2012 4:29:53 PM  
Modified: 12/11/2012 4:52:55 PM

Electrophoresis File Run Summary



Instrument Information:

Instrument Name: DE13701086 Firmware: C.01.069  
Serial#: DE13701086 Type: G2938B

Assay Information:

Assay Origin Path: C:\Program Files\Agilent\2100 bioanalyzer\2100 expert\assays\RNA\Eukaryote Total RNA Pico Series II.xsy

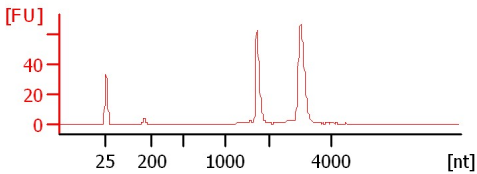
Assay Class: Eukaryote Total RNA Pico  
Version: 2.6  
Assay Comments: Total RNA Analysis pg sensitivity (Eukaryote)

© Copyright 2003 - 2009 Agilent Technologies, Inc.

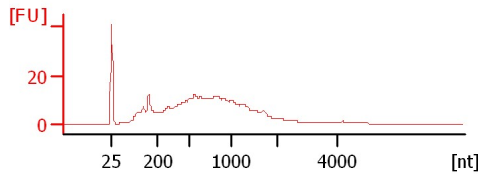
Chip Information:

Chip Lot #:   
Reagent Kit Lot #:   
Chip Comments:

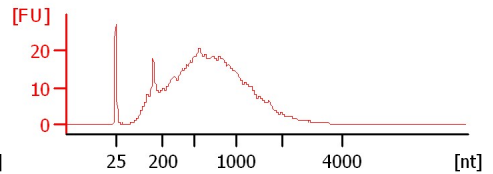
EM WS control  
RIN: 9.90



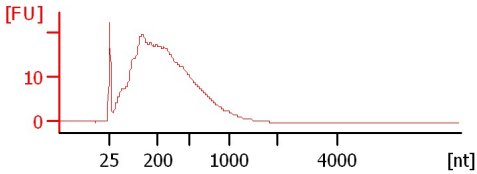
Glob scr. embed 10/19  
RIN: 2.40



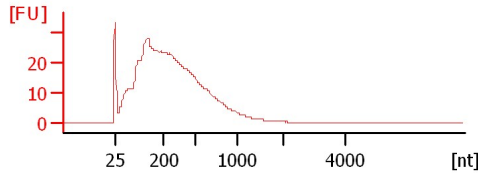
Glob ES 6-8, 10  
RIN: 2.10



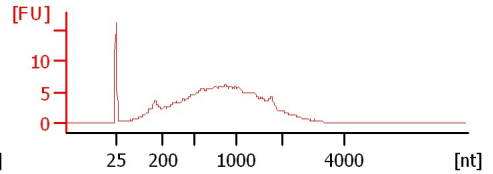
Julie-11  
RIN: 2.30



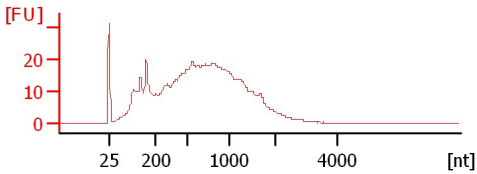
Julie-12  
RIN: 2.30



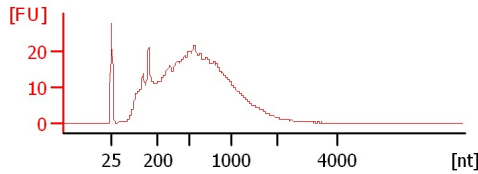
Glob ENT 26-28  
RIN: 2.80



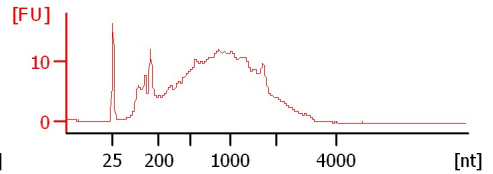
Glob HI 9-19  
RIN: 2.20



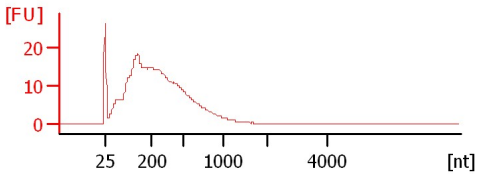
GLOB ES 3-5  
RIN: 2



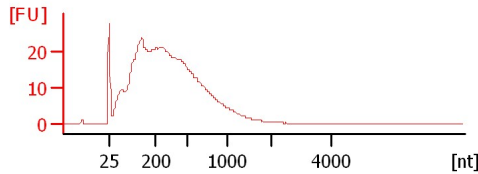
HRT EPD 33-43  
RIN: 2.50



Julie-13  
RIN: 2.30



Julie-14  
RIN: 2.20



Assay Class: Eukaryote Total RNA Pico  
Data Path: C:\...ents and Settings\Bioanalyzer\2012-12-11\2012-12-11\_001.xad

Created: 12/11/2012 4:29:53 PM  
Modified: 12/11/2012 4:52:55 PM

**Electrophoresis File Run Summary (Chip Summary)**

Sample Name	Sample Comment	Status	Result Label	Result Color
EM WS control		✓	RIN: 9.90	
Glob scr. embed 10/19		✓	RIN: 2.40	
Glob ES 6-8, 10		✓	RIN: 2.10	
Julie-11		✓	RIN: 2.30	
Julie-12		✓	RIN: 2.30	
Glob ENT 26-28		✓	RIN: 2.80	
Glob HI 9-19		✓	RIN: 2.20	
GLOB ES 3-5		✓	RIN:2	
HRT EPD 33-43		✓	RIN: 2.50	
Julie-13		✓	RIN: 2.30	
Julie-14		✓	RIN: 2.20	
Ladder		✓	All Other Samples	

**Chip Lot #**

**Reagent Kit Lot #**

**Chip Comments :**

Assay Class: Eukaryote Total RNA Pico  
Data Path: C:\...ents and Settings\Bioanalyzer\2012-12-11\2012-12-11\_001.xad

Created: 12/11/2012 4:29:53 PM  
Modified: 12/11/2012 4:52:55 PM

## Electrophoresis Assay Details

### General Analysis Settings

Number of Available Sample and Ladder Wells (Max.) : 12  
Minimum Visible Range [s] : 17  
Maximum Visible Range [s] : 70  
Start Analysis Time Range [s] : 18  
End Analysis Time Range [s] : 69  
Ladder Concentration [pg/ $\mu$ l] : 1000  
Lower Marker Concentration [pg/ $\mu$ l] : 0  
Upper Marker Concentration [pg/ $\mu$ l] : 0  
Used Lower Marker for Quantitation  
Standard Curve Fit is Logarithmic  
Show Data Aligned to Lower Marker

### Integrator Settings

Integration Start Time [s] : 18  
Integration End Time [s] : 69  
Slope Threshold : 0.6  
Height Threshold [FU] : 0.5  
Area Threshold : 0.2  
Width Threshold [s] : 0.3  
Baseline Plateau [s] : 6

### Filter Settings

Filter Width [s] : 0.5  
Polynomial Order : 4

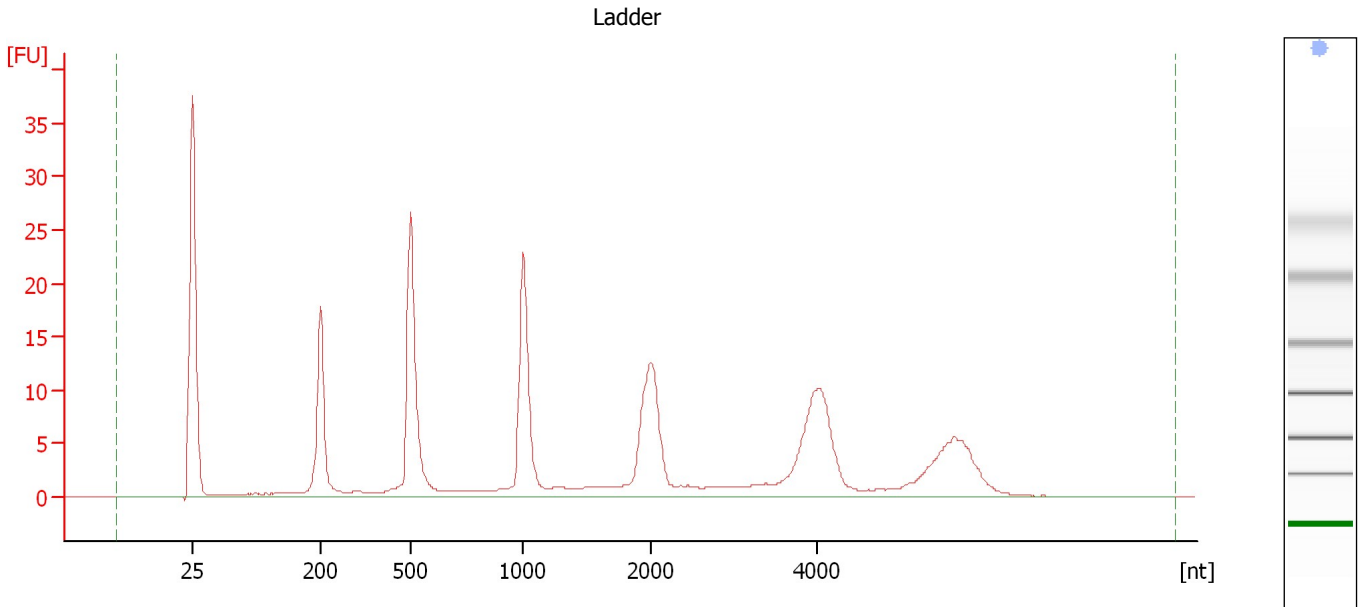
### Ladder

Ladder Peak	Size
1	25
2	200
3	500
4	1000
5	2000
6	4000

Assay Class: Eukaryote Total RNA Pico  
Data Path: C:\...ents and Settings\Bioanalyzer\2012-12-11\2012-12-11\_001.xad

Created: 12/11/2012 4:29:53 PM  
Modified: 12/11/2012 4:52:55 PM

**Electropherogram Summary**



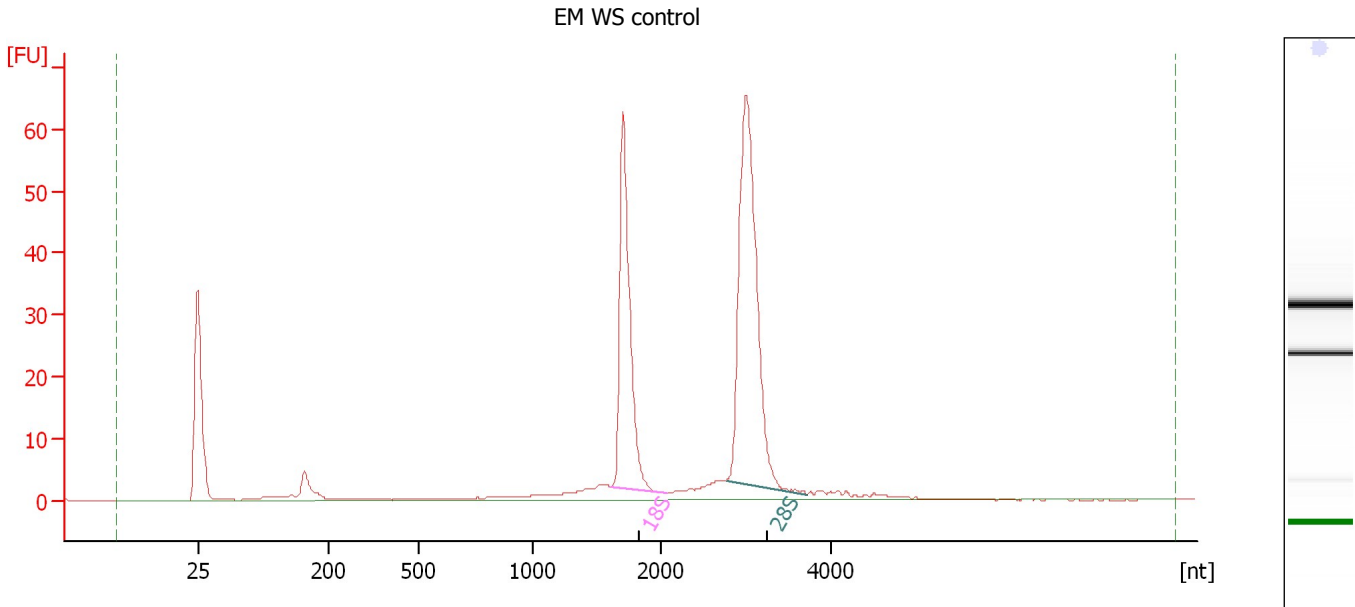
**Overall Results for Ladder**

RNA Area:	214.0	Result Flagging Color:	<span style="background-color: #add8e6; border: 1px solid black; display: inline-block; width: 20px; height: 10px;"></span>
RNA Concentration:	1,000 pg/μl	Result Flagging Label:	All Other Samples

Assay Class: Eukaryote Total RNA Pico  
 Data Path: C:\...ents and Settings\Bioanalyzer\2012-12-11\2012-12-11\_001.xad

Created: 12/11/2012 4:29:53 PM  
 Modified: 12/11/2012 4:52:55 PM

**Electropherogram Summary Continued ...**



**Overall Results for sample 1 : EM WS control**

RNA Area:	278.1	RNA Integrity Number (RIN):	9.9 (B.02.08)
RNA Concentration:	1,299 pg/μl	Result Flagging Color:	<span style="background-color: #ccccff; border: 1px solid black; display: inline-block; width: 20px; height: 10px;"></span>
rRNA Ratio [28s / 18s]:	1.6	Result Flagging Label:	RIN: 9.90

**Fragment table for sample 1 : EM WS control**

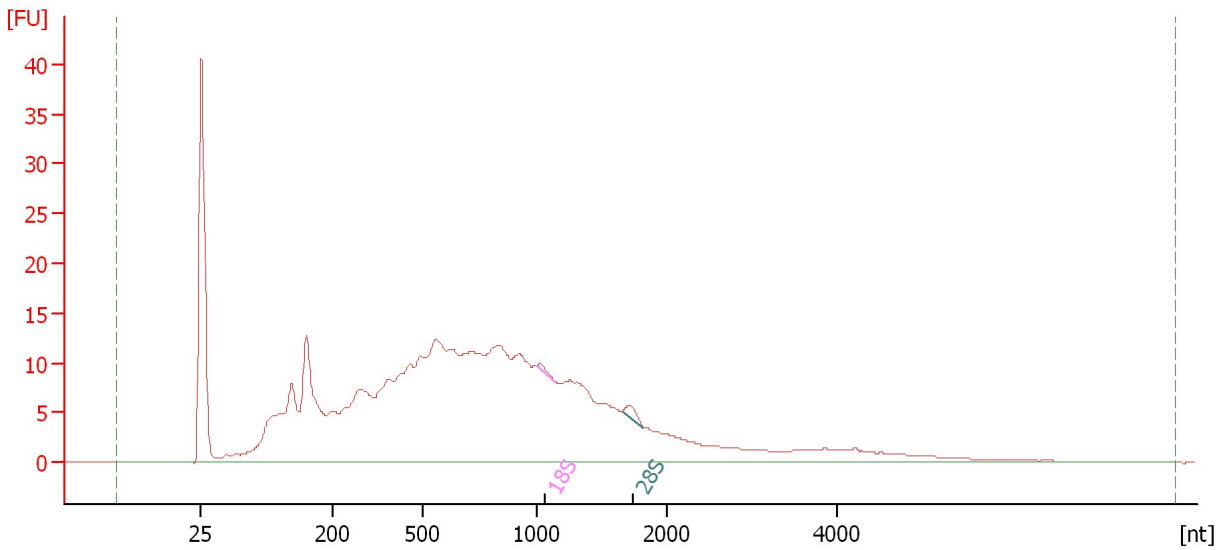
Name	Start Size [nt]	End Size [nt]	Area	% of total Area
18S	1,620	2,067	76.0	27.3
28S	2,773	3,718	120.3	43.3

Assay Class: Eukaryote Total RNA Pico  
Data Path: C:\...ents and Settings\Bioanalyzer\2012-12-11\2012-12-11\_001.xad

Created: 12/11/2012 4:29:53 PM  
Modified: 12/11/2012 4:52:55 PM

**Electropherogram Summary Continued ...**

Glob scr. embed 10/19



**Overall Results for sample 2 : Glob scr. embed 10/19**

RNA Area: 467.8 RNA Integrity Number (RIN): 2.4 (B.02.08)  
RNA Concentration: 2,186 pg/μl Result Flagging Color:   
rRNA Ratio [28s / 18s]: 1.9 Result Flagging Label: RIN: 2.40

**Fragment table for sample 2 : Glob scr. embed 10/19**

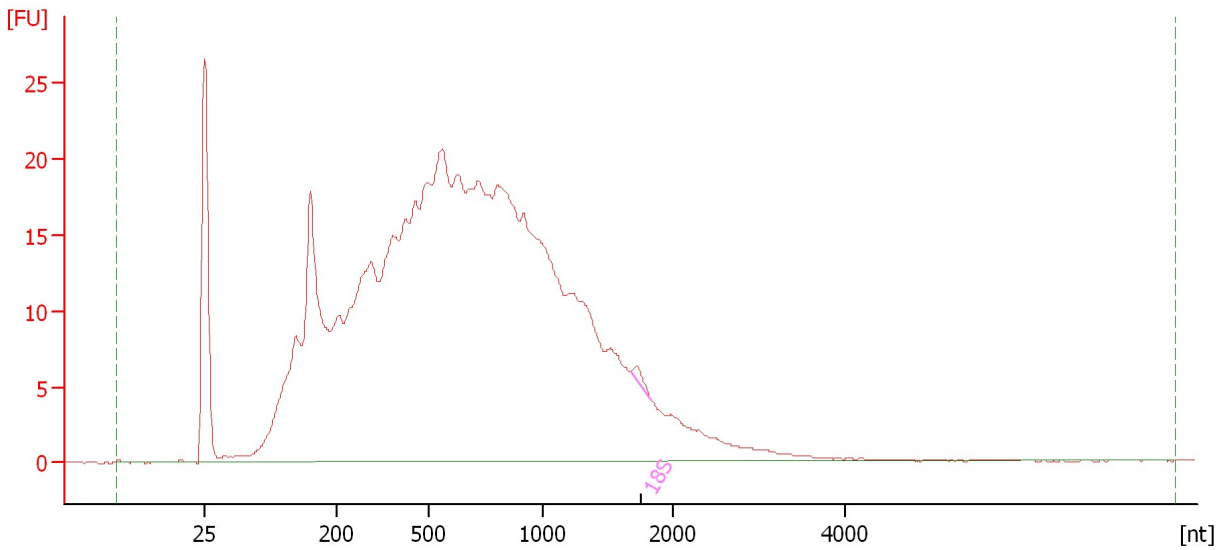
Name	Start Size [nt]	End Size [nt]	Area	% of total Area
18S	993	1,137	0.8	0.2
28S	1,657	1,823	1.5	0.3

Assay Class: Eukaryote Total RNA Pico  
Data Path: C:\...ents and Settings\Bioanalyzer\2012-12-11\2012-12-11\_001.xad

Created: 12/11/2012 4:29:53 PM  
Modified: 12/11/2012 4:52:55 PM

**Electropherogram Summary Continued ...**

Glob ES 6-8, 10



**Overall Results for sample 3 : Glob ES 6-8, 10**

RNA Area:	663.4	RNA Integrity Number (RIN):	2.1 (B.02.08)
RNA Concentration:	3,100 pg/μl	Result Flagging Color:	<span style="background-color: #ccccff; border: 1px solid black; display: inline-block; width: 20px; height: 10px;"></span>
rRNA Ratio [28s / 18s]:	0.0	Result Flagging Label:	RIN: 2.10

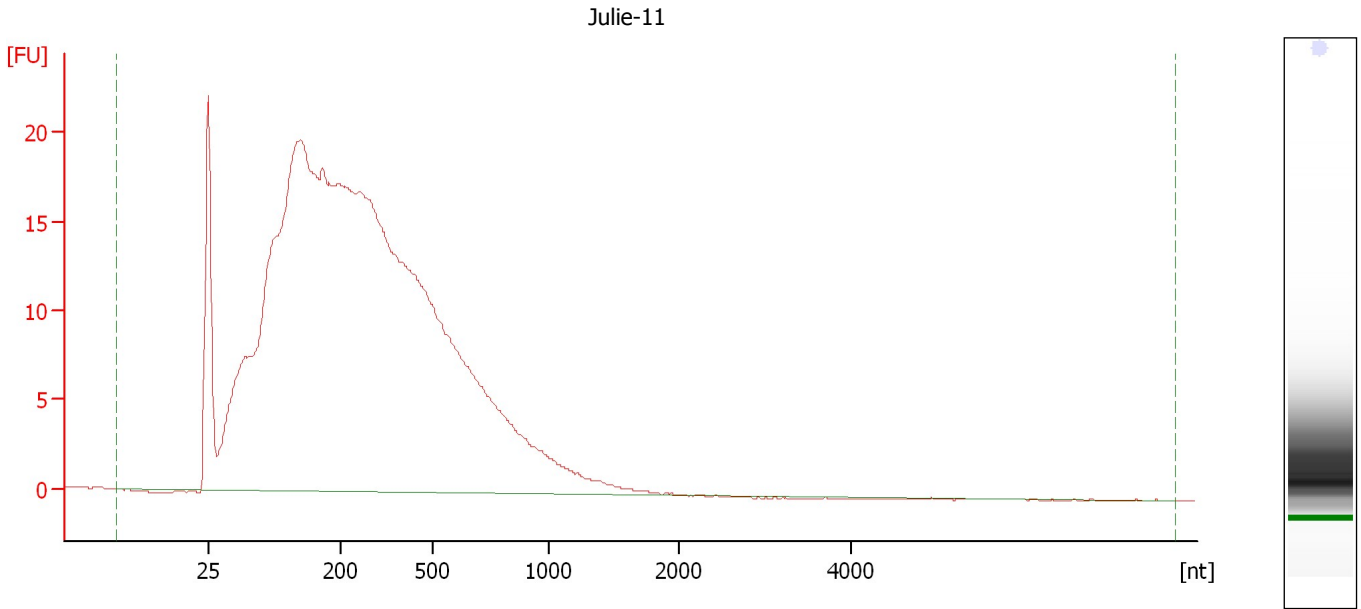
**Fragment table for sample 3 : Glob ES 6-8, 10**

Name	Start Size [nt]	End Size [nt]	Area	% of total Area
18S	1,678	1,825	1.1	0.2

Assay Class: Eukaryote Total RNA Pico  
Data Path: C:\...ents and Settings\Bioanalyzer\2012-12-11\2012-12-11\_001.xad

Created: 12/11/2012 4:29:53 PM  
Modified: 12/11/2012 4:52:55 PM

**Electropherogram Summary Continued ...**



**Overall Results for sample 4 : Julie-11**

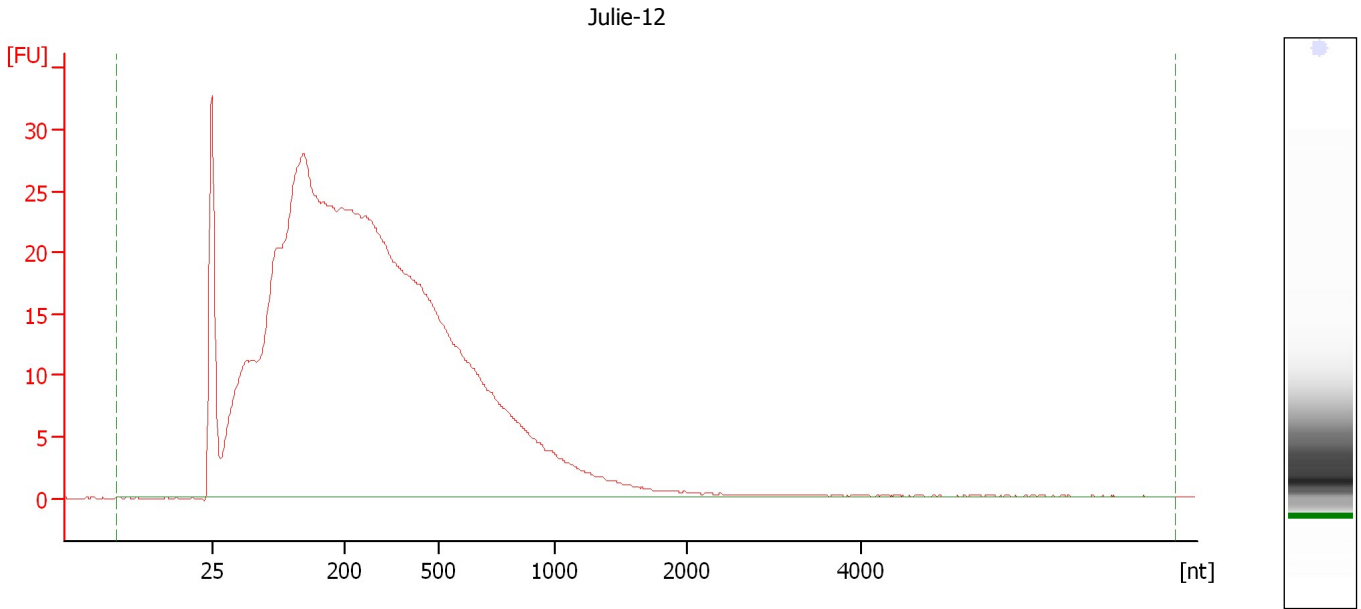
RNA Area:	551.7	RNA Integrity Number (RIN):	2.3 (B.02.08)
RNA Concentration:	2,578 pg/μl	Result Flagging Color:	<span style="background-color: #ccccff; border: 1px solid black; display: inline-block; width: 20px; height: 10px;"></span>
rRNA Ratio [28s / 18s]:	0.0	Result Flagging Label:	RIN: 2.30



Assay Class: Eukaryote Total RNA Pico  
Data Path: C:\...ents and Settings\Bioanalyzer\2012-12-11\2012-12-11\_001.xad

Created: 12/11/2012 4:29:53 PM  
Modified: 12/11/2012 4:52:55 PM

**Electropherogram Summary Continued ...**



**Overall Results for sample 5 : Julie-12**

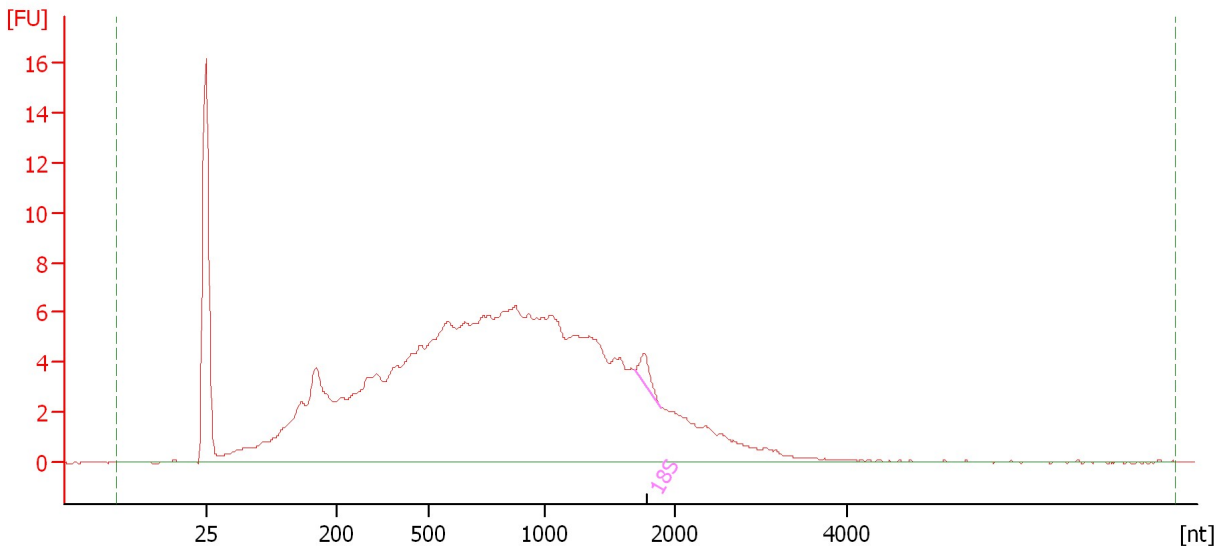
RNA Area:	796.9	RNA Integrity Number (RIN):	2.3 (B.02.08)
RNA Concentration:	3,724 pg/μl	Result Flagging Color:	<span style="background-color: #ccccff; border: 1px solid black; display: inline-block; width: 20px; height: 10px;"></span>
rRNA Ratio [28s / 18s]:	0.0	Result Flagging Label:	RIN: 2.30

Assay Class: Eukaryote Total RNA Pico  
Data Path: C:\...ents and Settings\Bioanalyzer\2012-12-11\2012-12-11\_001.xad

Created: 12/11/2012 4:29:53 PM  
Modified: 12/11/2012 4:52:55 PM

**Electropherogram Summary Continued ...**

Glob ENT 26-28



**Overall Results for sample 6 : Glob ENT 26-28**

RNA Area:	231.0	RNA Integrity Number (RIN):	2.8 (B.02.08)
RNA Concentration:	1,080 pg/μl	Result Flagging Color:	<span style="background-color: #ccccff; border: 1px solid black; display: inline-block; width: 20px; height: 10px;"></span>
rRNA Ratio [28s / 18s]:	0.0	Result Flagging Label:	RIN: 2.80

**Fragment table for sample 6 : Glob ENT 26-28**

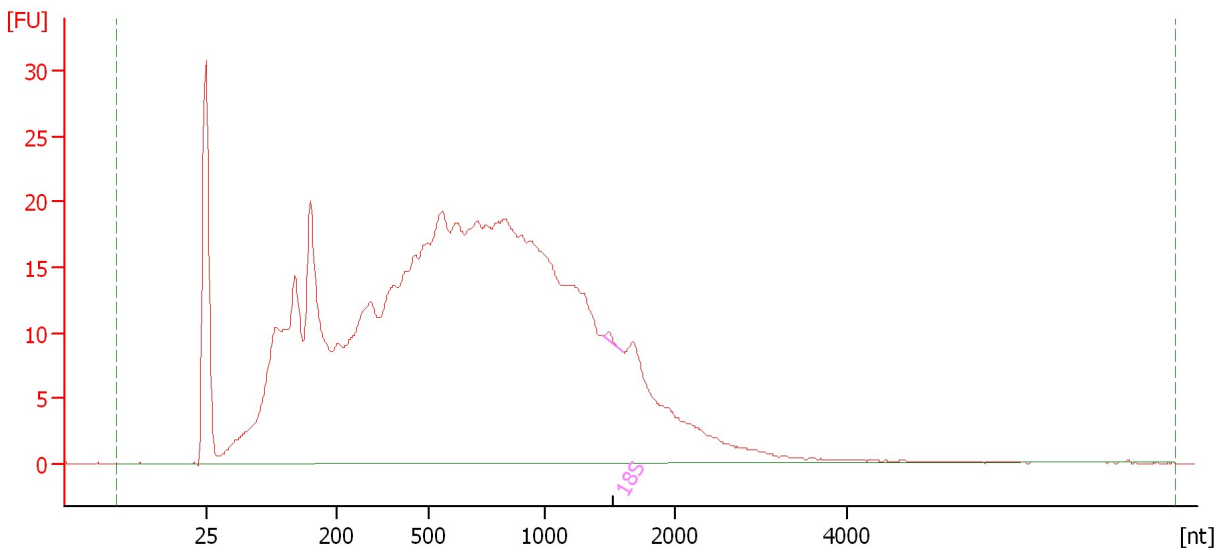
Name	Start Size [nt]	End Size [nt]	Area	% of total Area
18S	1,687	1,892	1.5	0.7

Assay Class: Eukaryote Total RNA Pico  
Data Path: C:\...ents and Settings\Bioanalyzer\2012-12-11\2012-12-11\_001.xad

Created: 12/11/2012 4:29:53 PM  
Modified: 12/11/2012 4:52:55 PM

**Electropherogram Summary Continued ...**

Glob HI 9-19



**Overall Results for sample 7 : Glob HI 9-19**

RNA Area:	746.1	RNA Integrity Number (RIN):	2.2 (B.02.08)
RNA Concentration:	3,487 pg/μl	Result Flagging Color:	<span style="background-color: #ccccff; border: 1px solid black; display: inline-block; width: 20px; height: 10px;"></span>
rRNA Ratio [28s / 18s]:	0.0	Result Flagging Label:	RIN: 2.20

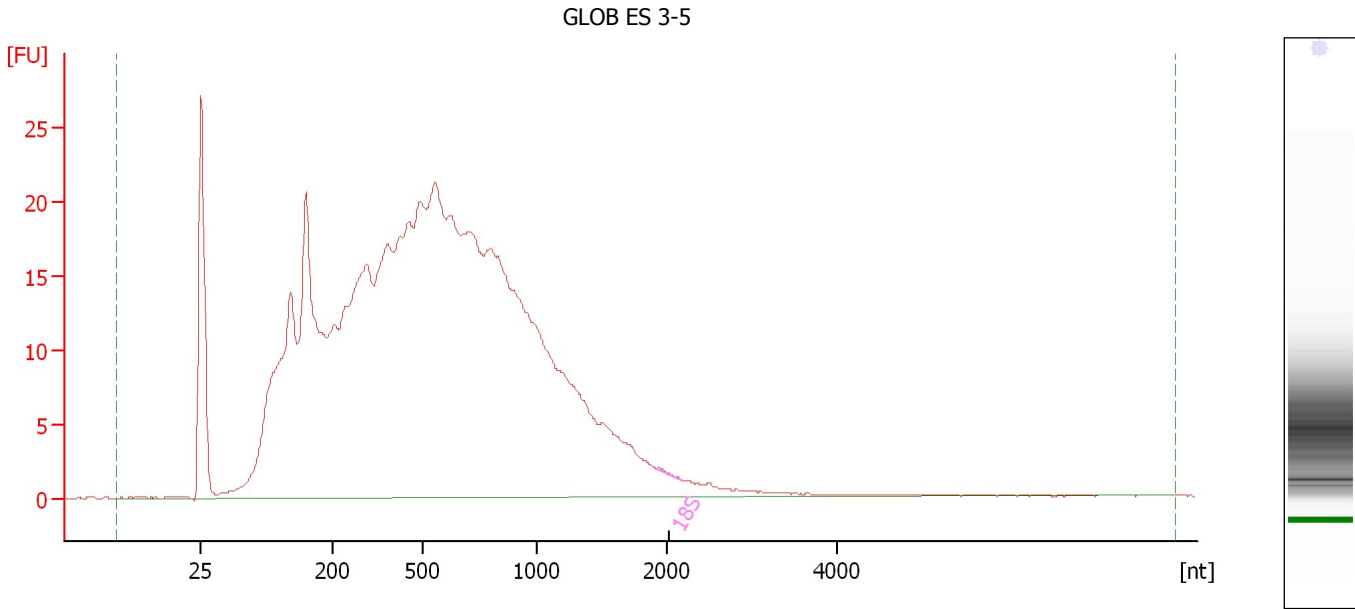
**Fragment table for sample 7 : Glob HI 9-19**

Name	Start Size [nt]	End Size [nt]	Area	% of total Area
18S	1,450	1,597	0.6	0.1

Assay Class: Eukaryote Total RNA Pico  
Data Path: C:\...ents and Settings\Bioanalyzer\2012-12-11\2012-12-11\_001.xad

Created: 12/11/2012 4:29:53 PM  
Modified: 12/11/2012 4:52:55 PM

**Electropherogram Summary Continued ...**



**Overall Results for sample 8 : GLOB ES 3-5**

RNA Area:	683.5	RNA Integrity Number (RIN):	2 (B.02.08)
RNA Concentration:	3,194 pg/μl	Result Flagging Color:	<span style="background-color: #ccccff; border: 1px solid black; display: inline-block; width: 20px; height: 10px;"></span>
rRNA Ratio [28s / 18s]:	0.0	Result Flagging Label:	RIN:2

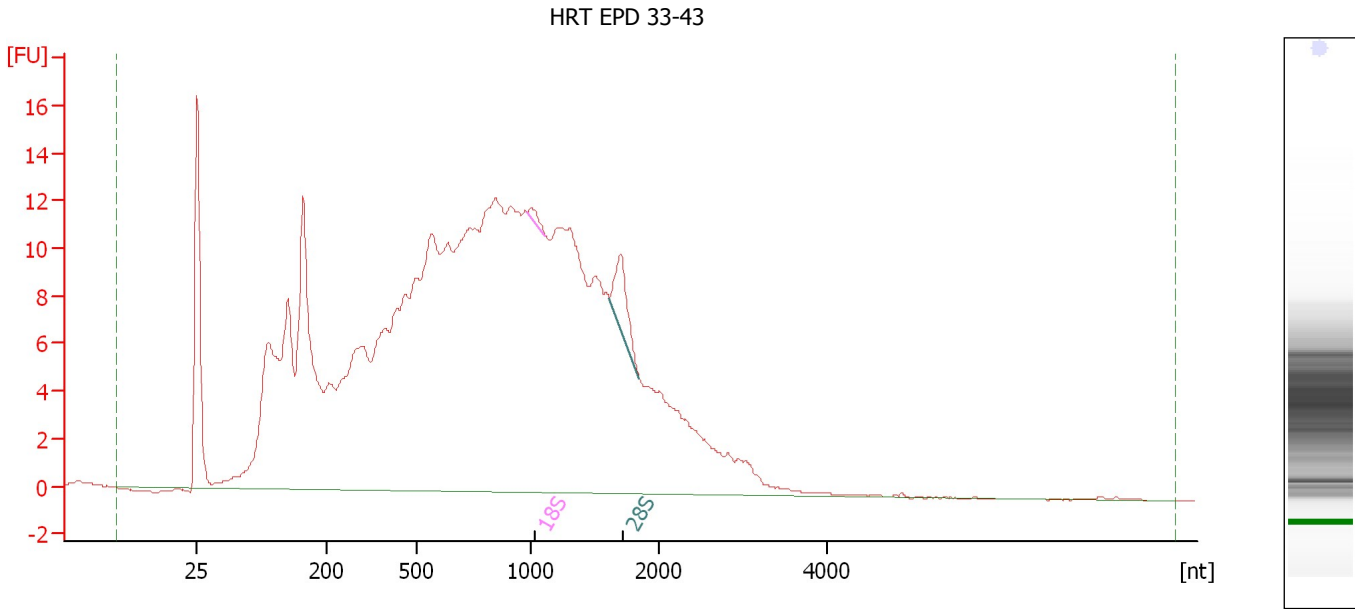
**Fragment table for sample 8 : GLOB ES 3-5**

Name	Start Size [nt]	End Size [nt]	Area	% of total Area
18S	1,922	2,194	0.2	0.0

Assay Class: Eukaryote Total RNA Pico  
 Data Path: C:\...ents and Settings\Bioanalyzer\2012-12-11\2012-12-11\_001.xad

Created: 12/11/2012 4:29:53 PM  
 Modified: 12/11/2012 4:52:55 PM

**Electropherogram Summary Continued ...**



**Overall Results for sample 9 : HRT EPD 33-43**

RNA Area:	474.9	RNA Integrity Number (RIN):	2.5 (B.02.08)
RNA Concentration:	2,219 pg/μl	Result Flagging Color:	<span style="background-color: #ccccff; border: 1px solid black; display: inline-block; width: 20px; height: 10px;"></span>
rRNA Ratio [28s / 18s]:	6.9	Result Flagging Label:	RIN: 2.50

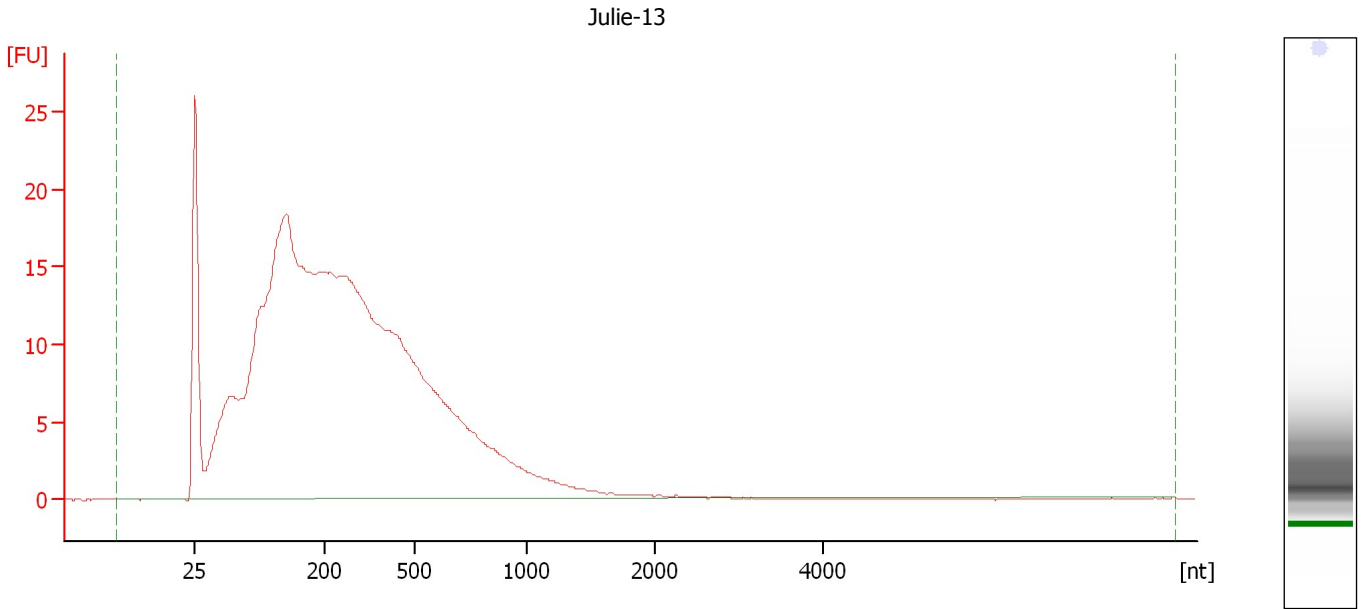
**Fragment table for sample 9 : HRT EPD 33-43**

Name	Start Size [nt]	End Size [nt]	Area	% of total Area
18S	982	1,119	0.7	0.1
28S	1,619	1,852	4.5	0.9

Assay Class: Eukaryote Total RNA Pico  
Data Path: C:\...ents and Settings\Bioanalyzer\2012-12-11\2012-12-11\_001.xad

Created: 12/11/2012 4:29:53 PM  
Modified: 12/11/2012 4:52:55 PM

**Electropherogram Summary Continued ...**



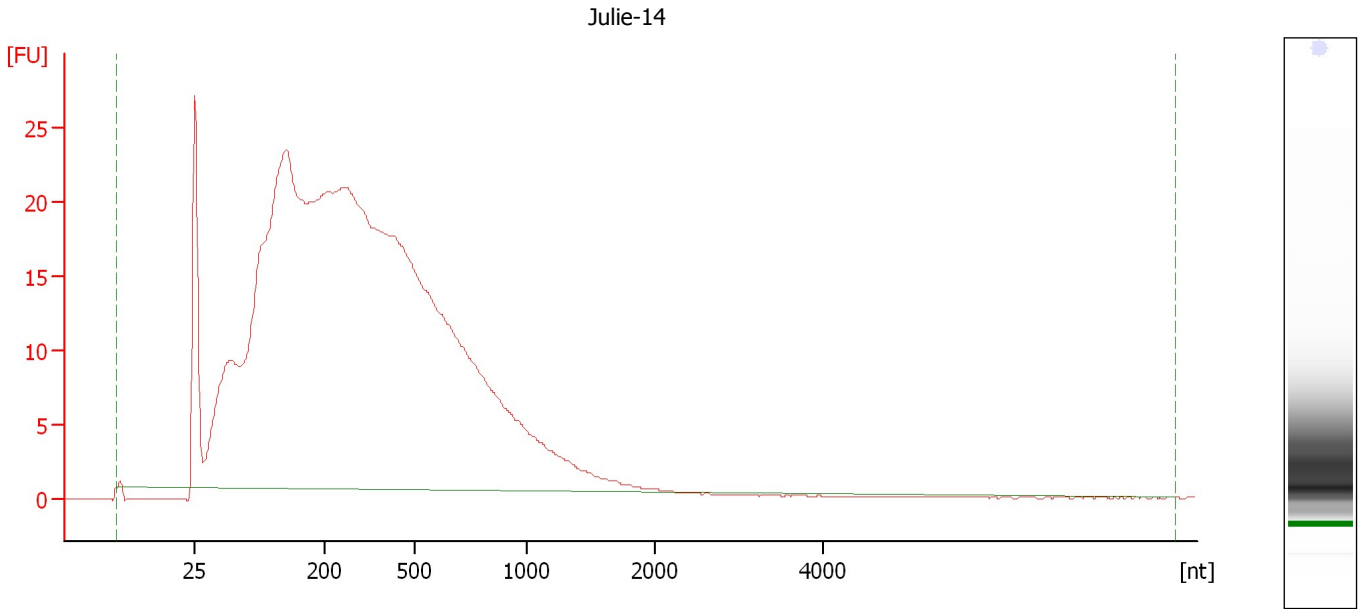
**Overall Results for sample 10 : Julie-13**

RNA Area:	474.5	RNA Integrity Number (RIN):	2.3 (B.02.08)
RNA Concentration:	2,218 pg/ $\mu$ l	Result Flagging Color:	<span style="background-color: #ccccff; border: 1px solid black; display: inline-block; width: 20px; height: 10px;"></span>
rRNA Ratio [28s / 18s]:	0.0	Result Flagging Label:	RIN: 2.30

Assay Class: Eukaryote Total RNA Pico  
Data Path: C:\...ents and Settings\Bioanalyzer\2012-12-11\2012-12-11\_001.xad

Created: 12/11/2012 4:29:53 PM  
Modified: 12/11/2012 4:52:55 PM

**Electropherogram Summary Continued ...**



**Overall Results for sample 11 : Julie-14**

RNA Area:	703.1	RNA Integrity Number (RIN):	2.2 (B.02.08)
RNA Concentration:	3,286 pg/μl	Result Flagging Color:	<span style="background-color: #ccccff; border: 1px solid black; display: inline-block; width: 20px; height: 10px;"></span>
rRNA Ratio [28s / 18s]:	0.0	Result Flagging Label:	RIN: 2.20

Assay Class: Eukaryote Total RNA Pico  
Data Path: C:\...ents and Settings\Bioanalyzer\2012-12-11\2012-12-11\_001.xad

Created: 12/11/2012 4:29:53 PM  
Modified: 12/11/2012 4:52:55 PM

**Gel Image**

