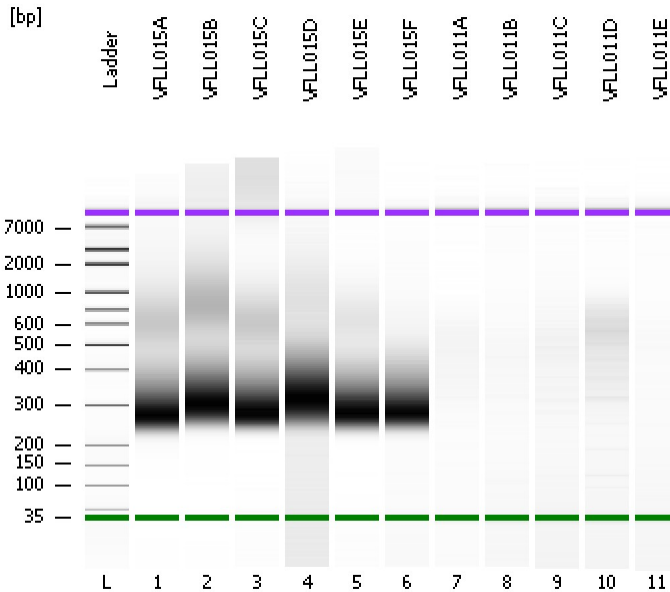


Assay Class: High Sensitivity DNA Assay
Data Path: C:\...ents and Settings\Bioanalyzer\2012-12-12\2012-12-12_001.xad

Created: 12/12/2012 10:12:37 AM
Modified: 12/12/2012 10:53:59 AM

Electrophoresis File Run Summary



Instrument Information:

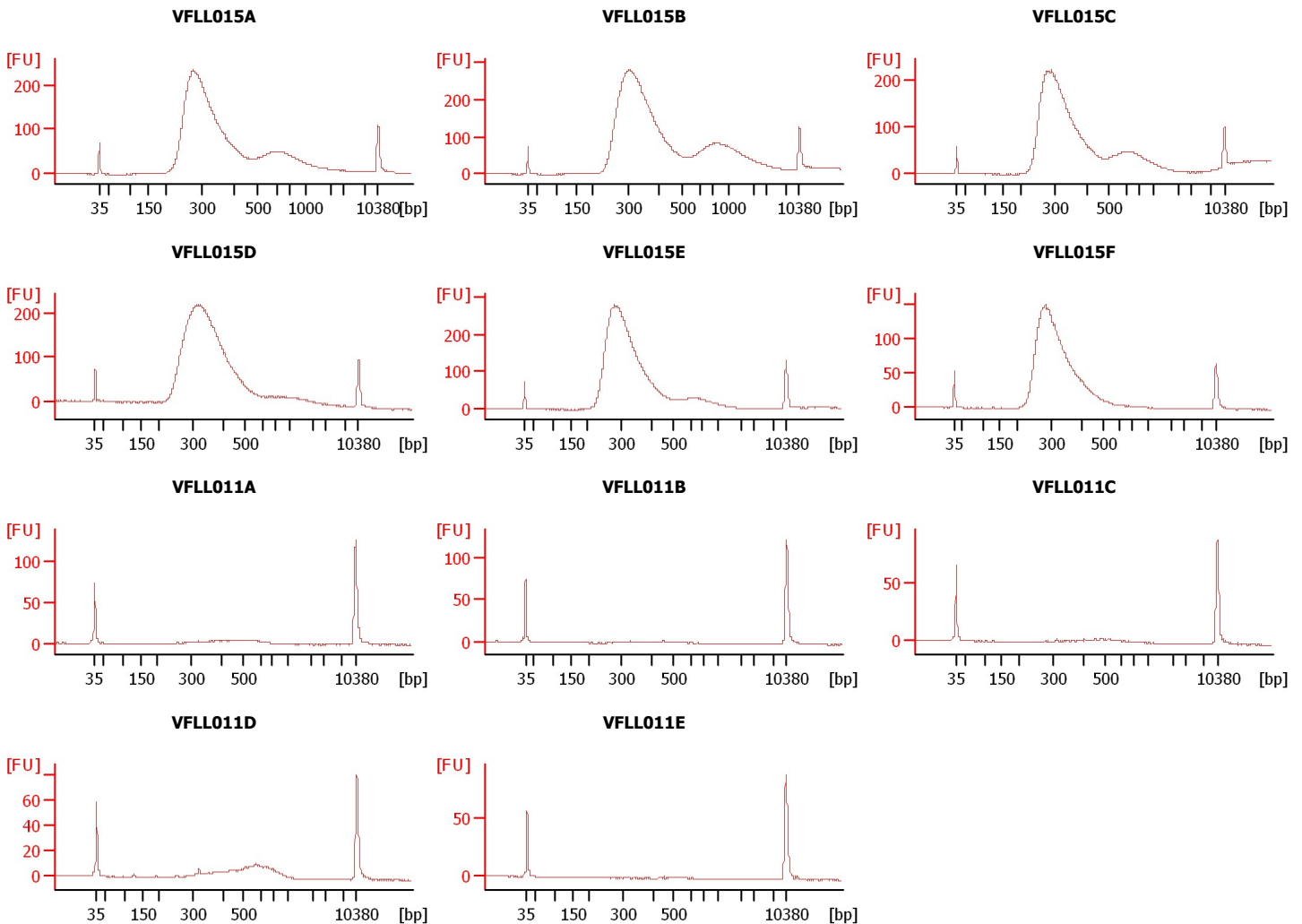
Instrument Name: DE13701086 Firmware: C.01.069
Serial#: DE13701086 Type: G2938B

Assay Information:

Assay Origin Path: C:\Program Files\Agilent\2100 bioanalyzer\2100 expert\assays\dsDNA\High Sensitivity DNA.xsy
Assay Class: High Sensitivity DNA Assay
Version: 1.03
Assay Comments: Copyright © 2003-2010 Agilent Technologies

Chip Information:

Chip Lot #:
Reagent Kit Lot #:
Chip Comments:



Assay Class: High Sensitivity DNA Assay
 Data Path: C:\...ents and Settings\Bioanalyzer\2012-12-12\2012-12-12_001.xad

Created: 12/12/2012 10:12:37 AM
 Modified: 12/12/2012 10:53:59 AM

Electrophoresis File Run Summary (Chip Summary)

Sample Name	Sample Comment	Rest. Digest	Status	Observation	Result Label	Result Color
VFLL015A		<input type="checkbox"/>	✓			
VFLL015B		<input type="checkbox"/>	✓			
VFLL015C		<input type="checkbox"/>	✓			
VFLL015D		<input type="checkbox"/>	✓			
VFLL015E		<input type="checkbox"/>	✓			
VFLL015F		<input type="checkbox"/>	✓			
VFLL011A		<input type="checkbox"/>	✓			
VFLL011B		<input type="checkbox"/>	✓			
VFLL011C		<input type="checkbox"/>	✓			
VFLL011D		<input type="checkbox"/>	✓			
VFLL011E		<input type="checkbox"/>	✓			
Ladder		<input type="checkbox"/>	✓			

Chip Lot #

Reagent Kit Lot #

Chip Comments :

Assay Class: High Sensitivity DNA Assay
Data Path: C:\...ents and Settings\Bioanalyzer\2012-12-12\2012-12-12_001.xad

Created: 12/12/2012 10:12:37 AM
Modified: 12/12/2012 10:53:59 AM

Electrophoresis Assay Details

General Analysis Settings

Number of Available Sample and Ladder Wells (Max.) : 12
Minimum Visible Range [s] : 32
Maximum Visible Range [s] : 138
Start Analysis Time Range [s] : 33
End Analysis Time Range [s] : 137.5
Ladder Concentration [pg/μl] : 1950
Uses Standard Area for Ladder Fragments
Lower Marker Concentration [pg/μl] : 125
Upper Marker Concentration [pg/μl] : 75
Used Upper Marker for Quantitation
Standard Curve Fit is Point to Point
Show Data Aligned to Lower and Upper Marker

Integrator Settings

Integration Start Time [s] : 33.05
Integration End Time [s] : 137
Slope Threshold : 0.8
Height Threshold [FU] : 5
Area Threshold : 0.1
Width Threshold [s] : 0.6
Baseline Plateau [s] : 0.5

Filter Settings

Filter Width [s] : 0.5
Polynomial Order : 4

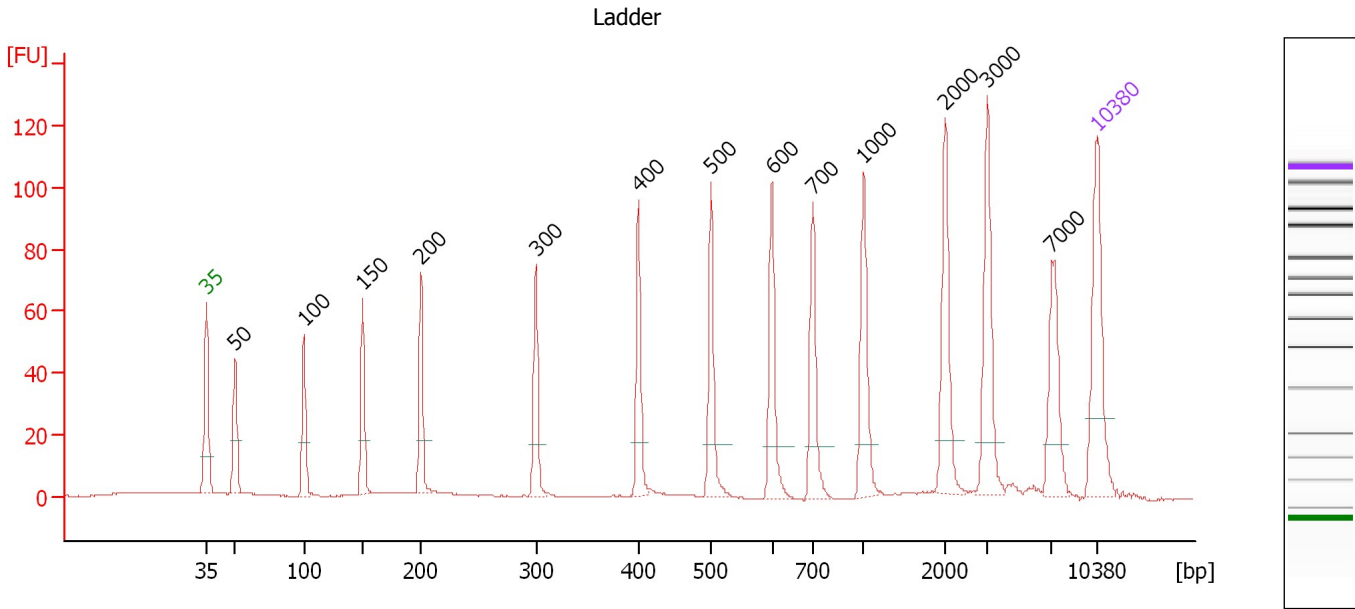
Ladder

Ladder Peak	Size	Area
1	35	160
2	50	210
3	100	208
4	150	221
5	200	242
6	300	270
7	400	305
8	500	306
9	600	336
10	700	321
11	1000	366
12	2000	413
13	3000	411
14	7000	400
15	10380	214

Assay Class: High Sensitivity DNA Assay
 Data Path: C:\...ents and Settings\Bioanalyzer\2012-12-12\2012-12-12_001.xad

Created: 12/12/2012 10:12:37 AM
 Modified: 12/12/2012 10:53:59 AM

Electropherogram Summary



Overall Results for Ladder

Noise: 0.1

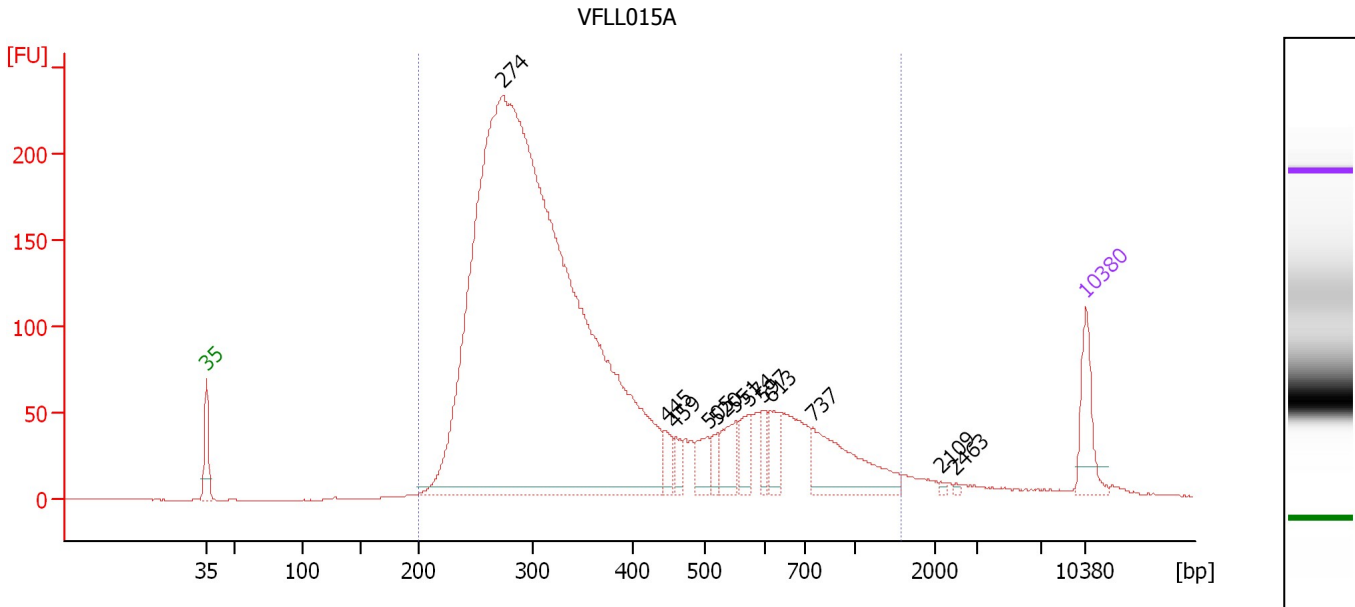
Peak table for Ladder

Peak	Size [bp]	Conc. [pg/μl]	Molarity [pmol/l]	Observations
1	35	125.00	5,411.3	Lower Marker
2	50	150.00	4,545.5	Ladder Peak
3	100	150.00	2,272.7	Ladder Peak
4	150	150.00	1,515.2	Ladder Peak
5	200	150.00	1,136.4	Ladder Peak
6	300	150.00	757.6	Ladder Peak
7	400	150.00	568.2	Ladder Peak
8	500	150.00	454.5	Ladder Peak
9	600	150.00	378.8	Ladder Peak
10	700	150.00	324.7	Ladder Peak
11	1,000	150.00	227.3	Ladder Peak
12	2,000	150.00	113.6	Ladder Peak
13	3,000	150.00	75.8	Ladder Peak
14	7,000	150.00	32.5	Ladder Peak
15	10,380	75.00	10.9	Upper Marker

Assay Class: High Sensitivity DNA Assay
 Data Path: C:\...ents and Settings\Bioanalyzer\2012-12-12\2012-12-12_001.xad

Created: 12/12/2012 10:12:37 AM
 Modified: 12/12/2012 10:53:59 AM

Electropherogram Summary Continued ...



Overall Results for sample 1 : VFL015A

Number of peaks found: 12 Corr. Area 1: 4,226.8
 Noise: 0.2

Peak table for sample 1 : VFL015A

Peak	Size [bp]	Conc. [pg/μl]	Molarity [pmol/l]	Observations
1	35	125.00	5,411.3	Lower Marker
2	274	4,453.00	24,597.6	
3	445	41.51	141.3	
4	459	31.67	104.6	
5	505	53.26	159.9	
6	520	32.07	93.5	
7	551	73.59	202.4	
8	574	56.95	150.3	
9	597	34.50	87.5	
10	613	60.77	150.3	
11	737	194.49	399.7	
12	2,109	3.22	2.3	
13	2,463	2.70	1.7	
14	10,380	75.00	10.9	Upper Marker

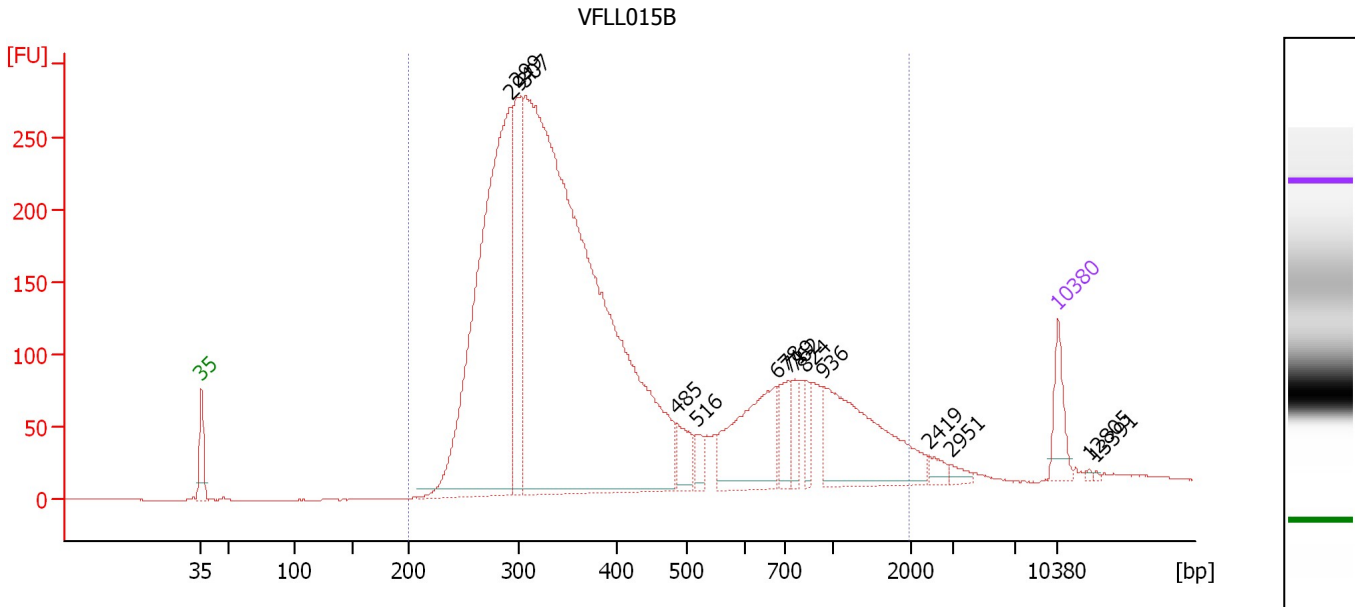
Region table for sample 1 : VFL015A

From [bp]	To [bp]	Average Size [bp]	Molarity [pmol/l]	Conc. [pg/μl]	Corr. Area	% of Total	Size distribution in CV [%]	Color
200	1,566	393	23,475.5	5,011.96	4,226.8	98	50.6	Blue

Assay Class: High Sensitivity DNA Assay
 Data Path: C:\...ents and Settings\Bioanalyzer\2012-12-12\2012-12-12_001.xad

Created: 12/12/2012 10:12:37 AM
 Modified: 12/12/2012 10:53:59 AM

Electropherogram Summary Continued ...



Overall Results for sample 2 : VFL015B

Number of peaks found: 14 Corr. Area 1: 5,474.6
 Noise: 0.3

Peak table for sample 2 : VFL015B

Peak	Size [bp]	Conc. [pg/μl]	Molarity [pmol/l]	Observations
1	35	125.00	5,411.3	Lower Marker
2	294	1,769.90	9,125.8	
3	299	457.74	2,318.2	
4	307	3,737.48	18,436.4	
5	485	88.10	275.1	
6	516	38.13	111.9	
7	678	345.90	772.7	
8	719	87.70	184.7	
9	762	55.73	110.8	
10	824	49.14	90.3	
11	936	419.80	679.5	
12	2,419	24.44	15.3	
13	2,951	18.24	9.4	
14	10,380	75.00	10.9	Upper Marker
15	12,805	0.00	0.0	
16	13,391	0.00	0.0	

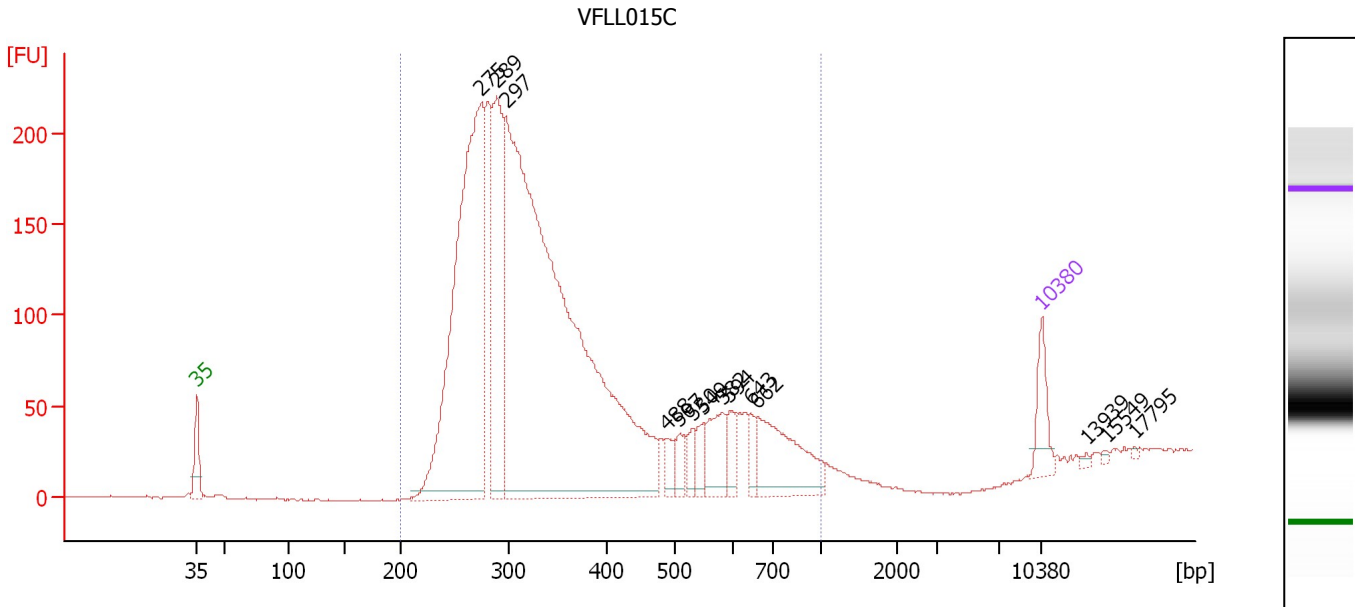
Region table for sample 2 : VFL015B

From [bp]	To [bp]	Average Size [bp]	Molarity [pmol/l]	Conc. [pg/μl]	Corr. Area	% of Total	Size distribution in CV [%]	Color
200	1,968	475	28,420.1	6,693.79	5,474.6	98	65.8	Blue

Assay Class: High Sensitivity DNA Assay
 Data Path: C:\...ents and Settings\Bioanalyzer\2012-12-12\2012-12-12_001.xad

Created: 12/12/2012 10:12:37 AM
 Modified: 12/12/2012 10:53:59 AM

Electropherogram Summary Continued ...



Overall Results for sample 3 : VFL015C

Number of peaks found: 14 Corr. Area 1: 3,353.0
 Noise: 0.5

Peak table for sample 3 : VFL015C

Peak	Size [bp]	Conc. [pg/μl]	Molarity [pmol/l]	Observations
1	35	125.00	5,411.3	Lower Marker
2	275	1,587.79	8,762.2	
3	289	566.08	2,970.3	
4	297	3,207.80	16,359.8	
5	488	43.83	136.1	
6	507	47.90	143.1	
7	530	41.83	119.6	
8	549	52.80	145.8	
9	582	120.92	314.9	
10	594	58.18	148.4	
11	643	43.29	102.0	
12	662	269.32	616.4	
13	10,380	75.00	10.9	Upper Marker
14	13,939	0.00	0.0	
15	15,549	0.00	0.0	
16	17,795	0.00	0.0	

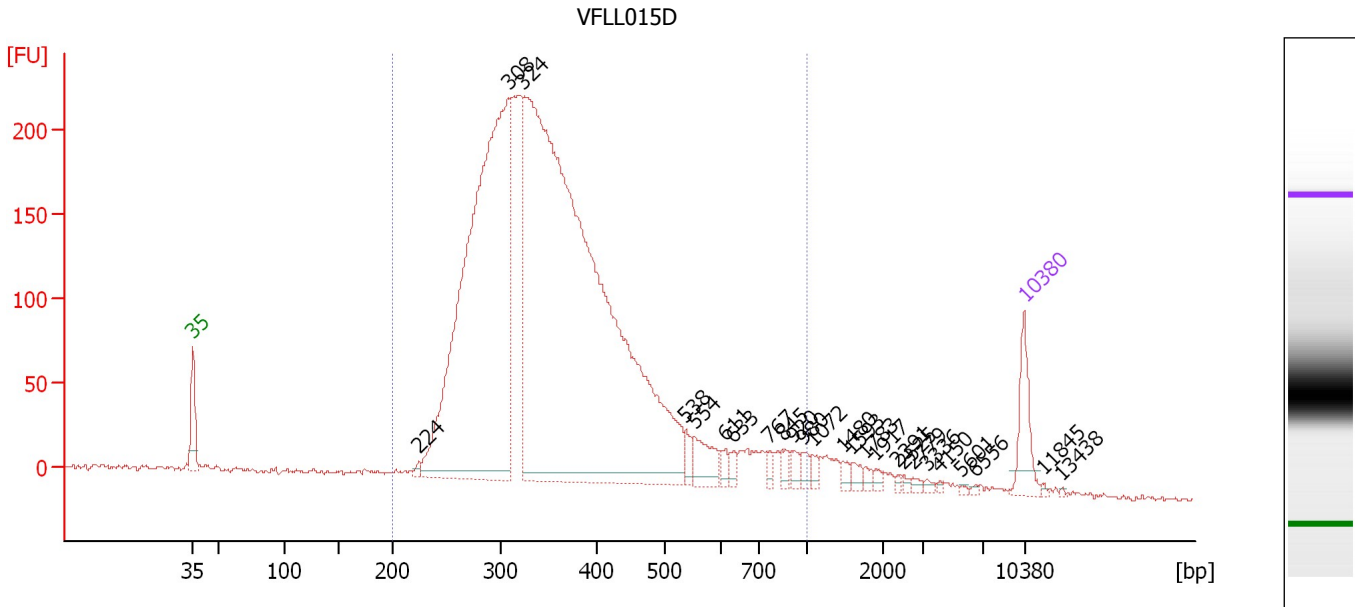
Region table for sample 3 : VFL015C

From [bp]	To [bp]	Average Size [bp]	Molarity [pmol/l]	Conc. [pg/μl]	Corr. Area	% of Total	Size distribution in CV [%]	Color
200	1,000	352	25,373.9	5,315.43	3,353.0	100	33.6	Blue

Assay Class: High Sensitivity DNA Assay
 Data Path: C:\...ents and Settings\Bioanalyzer\2012-12-12\2012-12-12_001.xad

Created: 12/12/2012 10:12:37 AM
 Modified: 12/12/2012 10:53:59 AM

Electropherogram Summary Continued ...



Overall Results for sample 4 : VFLLO15D

Number of peaks found: 25 Corr. Area 1: 4,403.2
 Noise: 1.5

Peak table for sample 4 : VFLLO15D

Peak	Size [bp]	Conc. [pg/μl]	Molarity [pmol/l]	Observations
1	35	125.00	5,411.3	Lower Marker
2	224	12.53	84.7	
3	308	1,827.77	8,987.4	
4	324	3,095.14	14,489.0	
5	538	27.61	77.8	
6	554	72.51	198.4	
7	611	19.80	49.1	
8	633	16.03	38.4	
9	767	16.19	32.0	
10	845	20.45	36.7	
11	920	16.90	27.8	
12	980	17.85	27.6	
13	1,072	15.58	22.0	
14	1,480	12.72	13.0	
15	1,593	15.99	15.2	
16	1,783	9.66	8.2	
17	1,917	8.41	6.6	
18	2,391	4.90	3.1	
19	2,525	5.61	3.4	
20	2,779	6.51	3.5	
21	3,336	4.95	2.2	
22	4,150	3.54	1.3	
23	5,601	2.74	0.7	
24	6,556	3.22	0.7	
25	10,380	75.00	10.9	Upper Marker
26	11,845	0.00	0.0	


Assay Class: High Sensitivity DNA Assay
Data Path: C:\...ents and Settings\Bioanalyzer\2012-12-12\2012-12-12_001.xad

Created: 12/12/2012 10:12:37 AM
Modified: 12/12/2012 10:53:59 AM

Electropherogram Summary Continued ...**... Peak table for sample 4 : VFLLO15D**

Peak	Size [bp]	Conc. [pg/ μ l]	Molarity [pmol/l]	Observations
27	13,438	0.00	0.0	

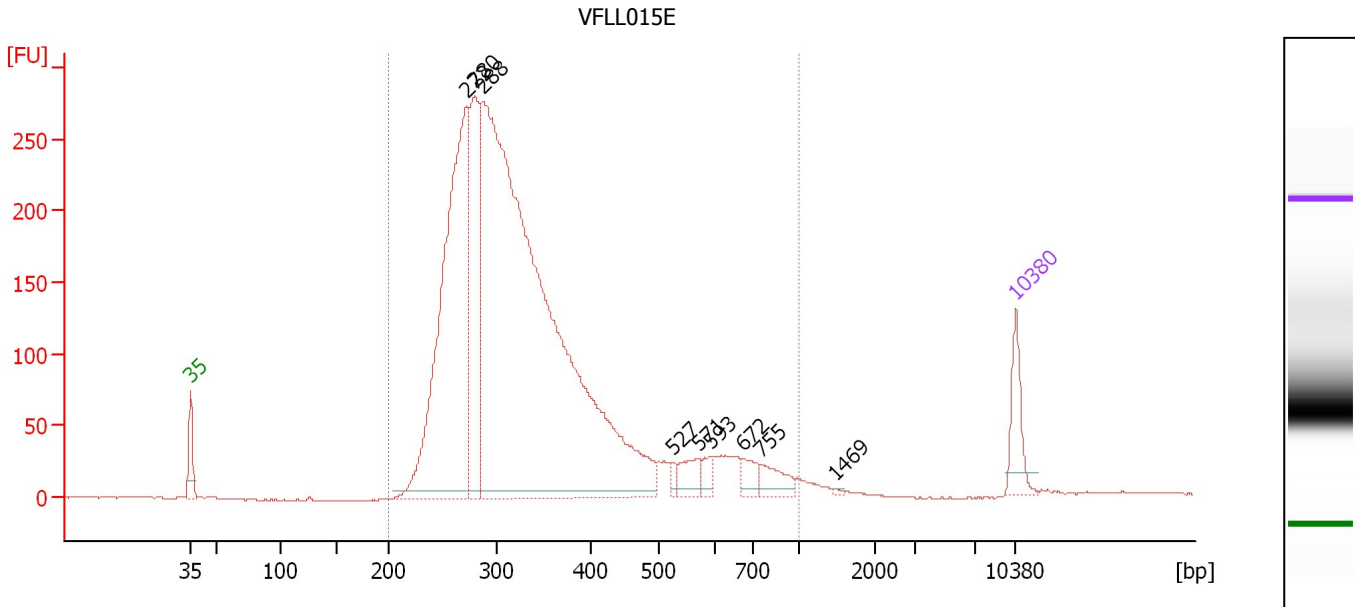
Region table for sample 4 : VFLLO15D

From [bp]	To [bp]	Average Size [bp]	Molarity [pmol/l]	Conc. [pg/ μ l]	Corr. Area	% of Total	Size distribution in CV [%]	Color
200	1,000	372	23,880.5	5,361.85	4,403.2	95	31.2	

Assay Class: High Sensitivity DNA Assay
 Data Path: C:\...ents and Settings\Bioanalyzer\2012-12-12\2012-12-12_001.xad

Created: 12/12/2012 10:12:37 AM
 Modified: 12/12/2012 10:53:59 AM

Electropherogram Summary Continued ...



Overall Results for sample 5 : VFLLO15E

Number of peaks found: 9 Corr. Area 1: 4,442.6
 Noise: 0.4

Peak table for sample 5 : VFLLO15E

Peak	Size [bp]	Conc. [pg/μl]	Molarity [pmol/l]	Observations
1	35	125.00	5,411.3	Lower Marker
2	272	1,256.83	6,989.4	
3	280	444.50	2,405.5	
4	288	3,126.85	16,449.7	
5	527	16.30	46.9	
6	571	55.89	148.3	
7	593	27.59	70.5	
8	672	40.53	91.4	
9	755	54.13	108.6	
10	1,469	3.55	3.7	
11	10,380	75.00	10.9	Upper Marker

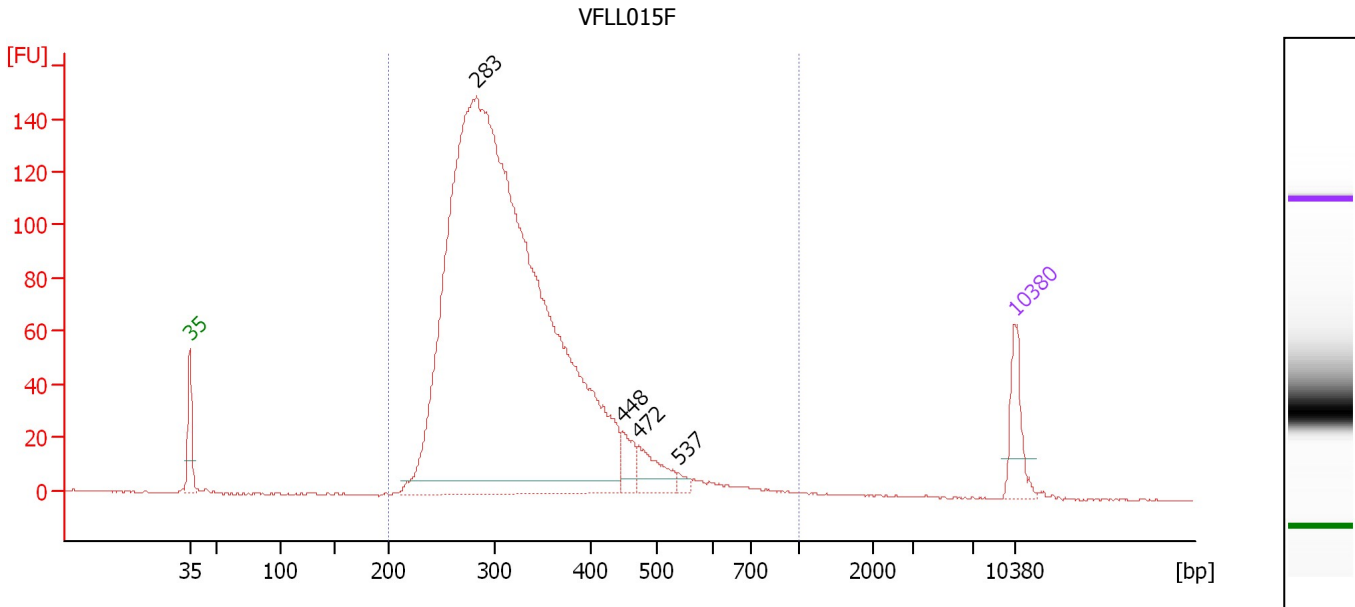
Region table for sample 5 : VFLLO15E

From [bp]	To [bp]	Average Size [bp]	Molarity [pmol/l]	Conc. [pg/μl]	Corr. Area	% of Total	Size distribution in CV [%]	Color
200	1,000	346	23,119.9	4,793.82	4,442.6	99	33.3	Blue

Assay Class: High Sensitivity DNA Assay
 Data Path: C:\...ents and Settings\Bioanalyzer\2012-12-12\2012-12-12_001.xad

Created: 12/12/2012 10:12:37 AM
 Modified: 12/12/2012 10:53:59 AM

Electropherogram Summary Continued ...



Overall Results for sample 6 : VFL015F

Number of peaks found: 4 Corr. Area 1: 2,235.2
 Noise: 0.2

Peak table for sample 6 : VFL015F

Peak	Size [bp]	Conc. [pg/μl]	Molarity [pmol/l]	Observations
1	35	125.00	5,411.3	Lower Marker
2	283	4,027.54	21,563.8	
3	448	54.34	183.9	
4	472	83.64	268.7	
5	537	12.73	35.9	
6	10,380	75.00	10.9	Upper Marker

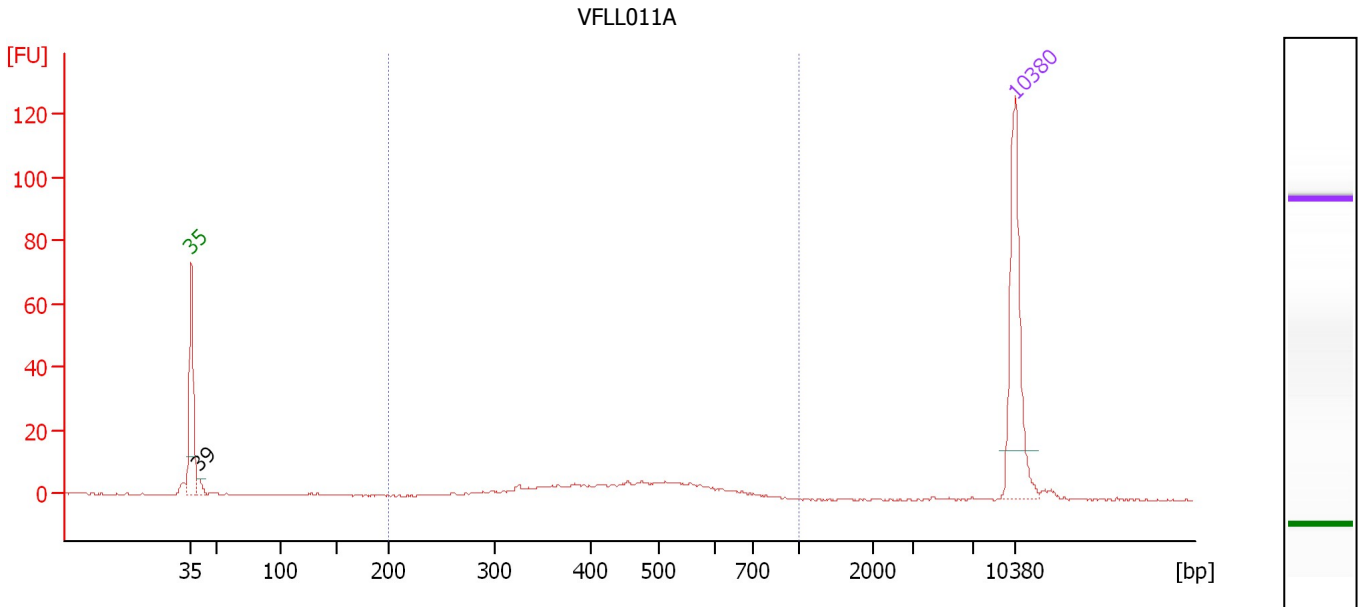
Region table for sample 6 : VFL015F

From [bp]	To [bp]	Average Size [bp]	Molarity [pmol/l]	Conc. [pg/μl]	Corr. Area	% of Total	Size distribution in CV [%]	Color
200	1,000	329	19,561.3	4,005.75	2,235.2	99	24.6	Blue

Assay Class: High Sensitivity DNA Assay
 Data Path: C:\...ents and Settings\Bioanalyzer\2012-12-12\2012-12-12_001.xad

Created: 12/12/2012 10:12:37 AM
 Modified: 12/12/2012 10:53:59 AM

Electropherogram Summary Continued ...



Overall Results for sample 7 : VFL011A

Number of peaks found: 1 Corr. Area 1: 94.9
 Noise: 0.2

Peak table for sample 7 : VFL011A

Peak	Size [bp]	Conc. [pg/μl]	Molarity [pmol/l]	Observations
1	35	125.00	5,411.3	Lower Marker
2	39	8.56	332.6	
3	10,380	75.00	10.9	Upper Marker

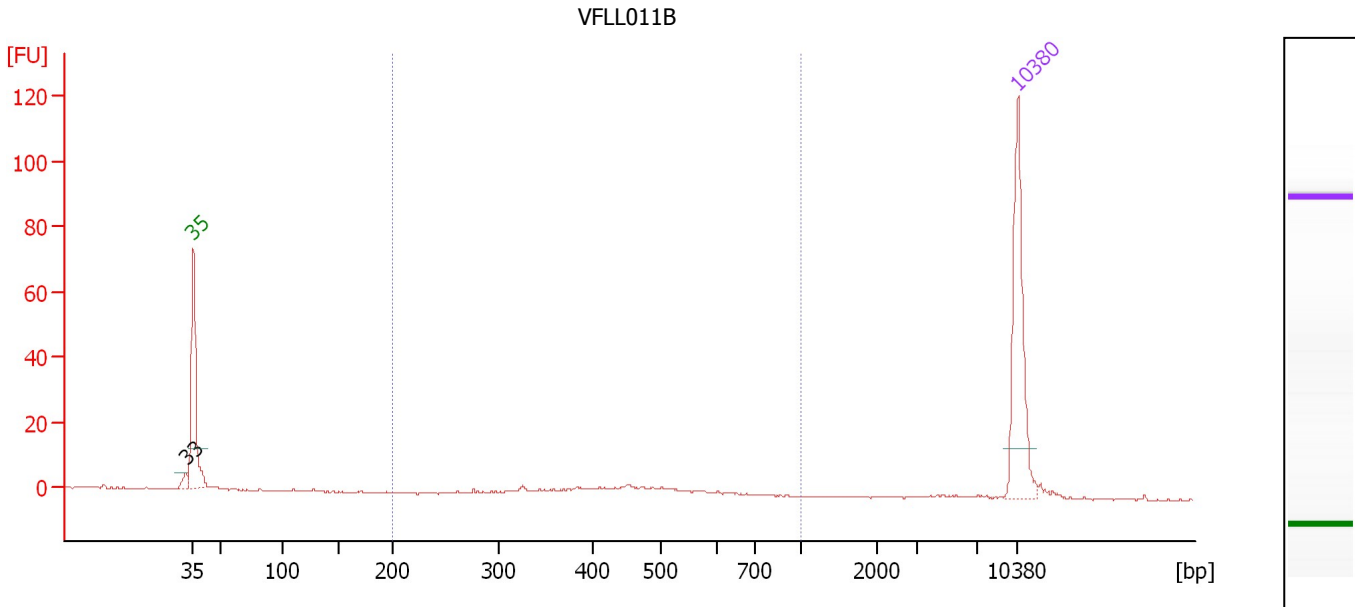
Region table for sample 7 : VFL011A

From [bp]	To [bp]	Average Size [bp]	Molarity [pmol/l]	Conc. [pg/μl]	Corr. Area	% of Total	Size distribution in CV [%]	Color
200	1,000	461	316.0	88.87	94.9	86	22.9	Blue

Assay Class: High Sensitivity DNA Assay
 Data Path: C:\...ents and Settings\Bioanalyzer\2012-12-12\2012-12-12_001.xad

Created: 12/12/2012 10:12:37 AM
 Modified: 12/12/2012 10:53:59 AM

Electropherogram Summary Continued ...



Overall Results for sample 8 : VFLLO11B

Number of peaks found: 1 Corr. Area 1: 33.0
 Noise: 0.1

Peak table for sample 8 : VFLLO11B

Peak	Size [bp]	Conc. [pg/μl]	Molarity [pmol/l]	Observations
1	33	0.00	0.0	
2	35	125.00	5,411.3	Lower Marker
3	10,380	75.00	10.9	Upper Marker

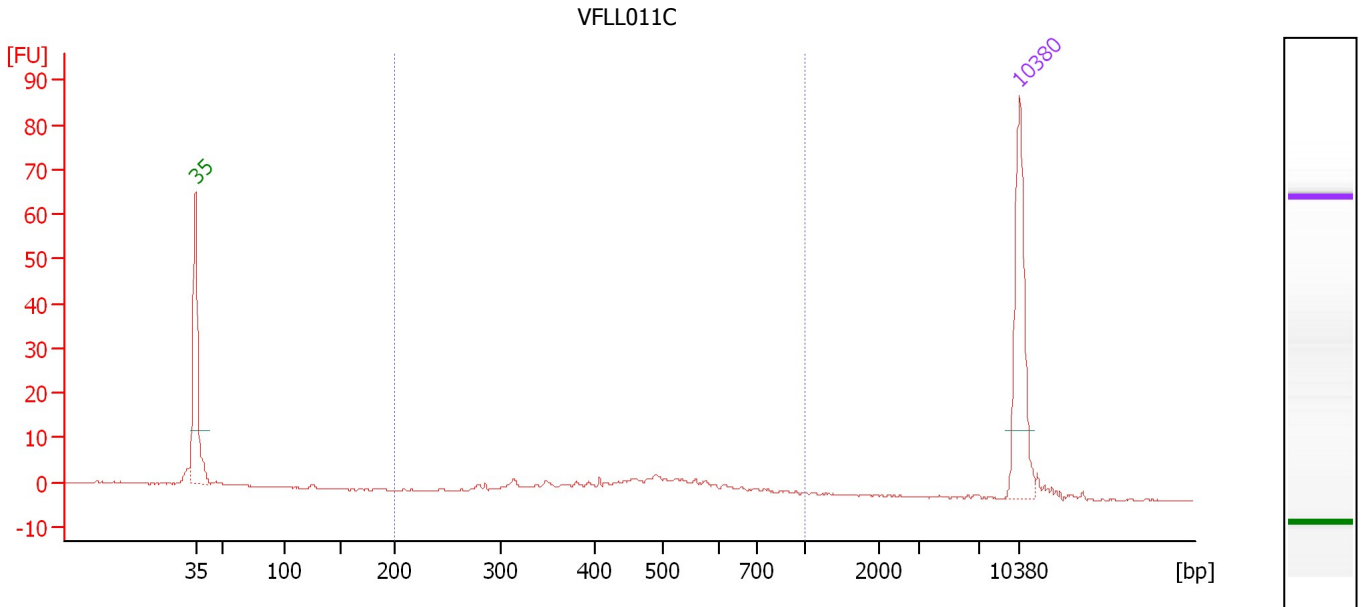
Region table for sample 8 : VFLLO11B

From [bp]	To [bp]	Average Size [bp]	Molarity [pmol/l]	Conc. [pg/μl]	Corr. Area	% of Total	Size distribution in CV [%]	Color
200	1,000	450	118.0	33.30	33.0	67	19.5	Blue

Assay Class: High Sensitivity DNA Assay
 Data Path: C:\...ents and Settings\Bioanalyzer\2012-12-12\2012-12-12_001.xad

Created: 12/12/2012 10:12:37 AM
 Modified: 12/12/2012 10:53:59 AM

Electropherogram Summary Continued ...



Overall Results for sample 9 : VFL011C

Number of peaks found: 0 Corr. Area 1: 55.0
 Noise: 0.1

Peak table for sample 9 : VFL011C

Peak	Size [bp]	Conc. [pg/μl]	Molarity [pmol/l]	Observations
1	35	125.00	5,411.3	Lower Marker
2	10,380	75.00	10.9	Upper Marker

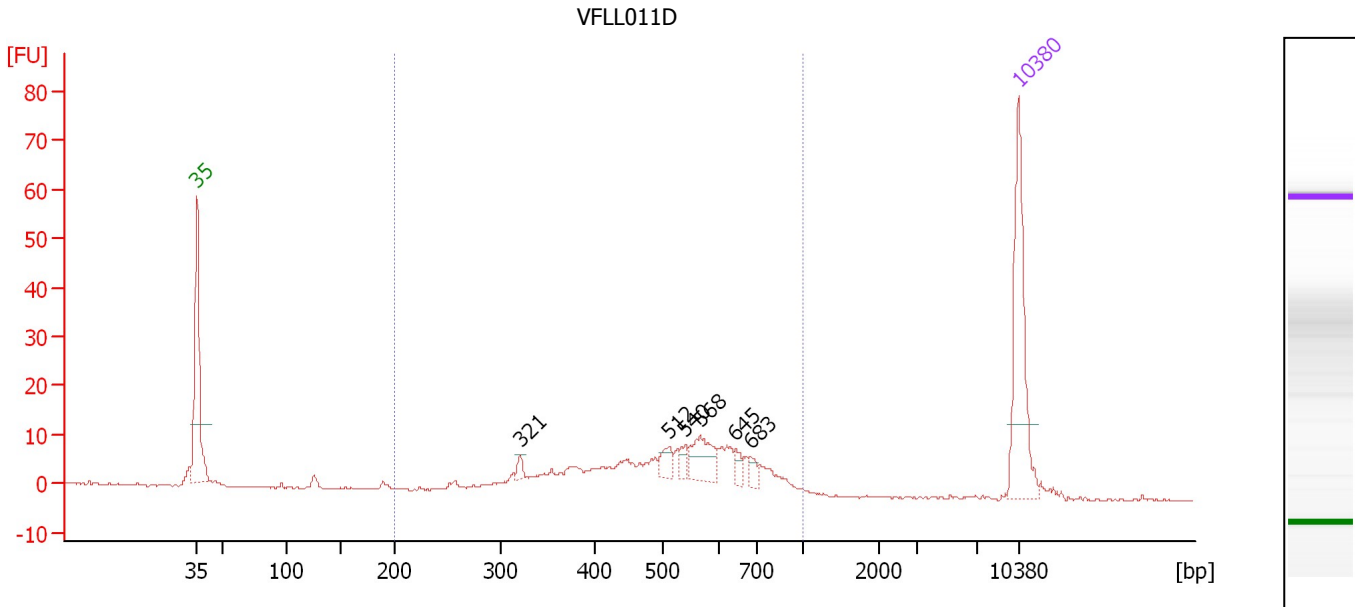
Region table for sample 9 : VFL011C

From [bp]	To [bp]	Average Size [bp]	Molarity [pmol/l]	Conc. [pg/μl]	Corr. Area	% of Total	Size distribution in CV [%]	Color
200	1,000	491	248.4	73.75	55.0	78	25.6	Blue

Assay Class: High Sensitivity DNA Assay
 Data Path: C:\...ents and Settings\Bioanalyzer\2012-12-12\2012-12-12_001.xad

Created: 12/12/2012 10:12:37 AM
 Modified: 12/12/2012 10:53:59 AM

Electropherogram Summary Continued ...



Overall Results for sample 10 : VFL011D

Number of peaks found: 6 Corr. Area 1: 192.5
 Noise: 0.2

Peak table for sample 10 : VFL011D

Peak	Size [bp]	Conc. [pg/μl]	Molarity [pmol/l]	Observations
1	35	125.00	5,411.3	Lower Marker
2	321	5.70	27.0	
3	512	11.91	35.3	
4	540	8.01	22.5	
5	568	30.12	80.4	
6	645	6.97	16.4	
7	683	6.40	14.2	
8	10,380	75.00	10.9	Upper Marker

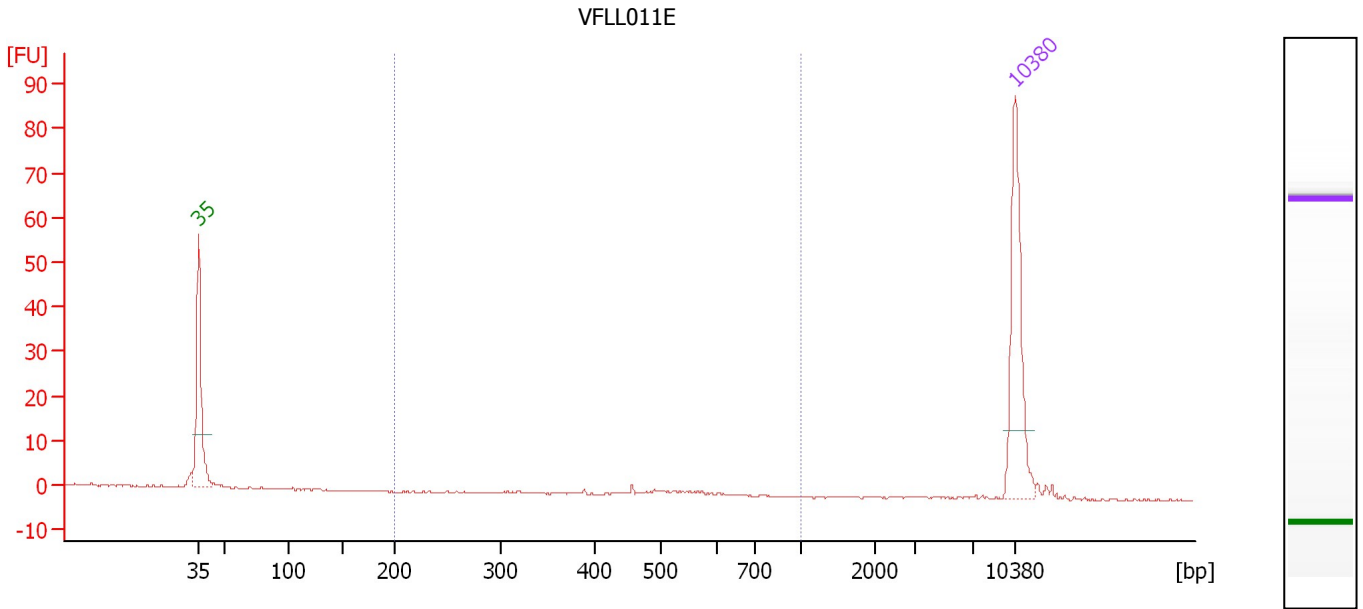
Region table for sample 10 : VFL011D

From [bp]	To [bp]	Average Size [bp]	Molarity [pmol/l]	Conc. [pg/μl]	Corr. Area	% of Total	Size distribution in CV [%]	Color
200	1,000	525	880.1	273.63	192.5	93	26.8	Blue

Assay Class: High Sensitivity DNA Assay
Data Path: C:\...ents and Settings\Bioanalyzer\2012-12-12\2012-12-12_001.xad

Created: 12/12/2012 10:12:37 AM
Modified: 12/12/2012 10:53:59 AM

Electropherogram Summary Continued ...



Overall Results for sample 11 : **VFLLO11E**

Number of peaks found: 0 Corr. Area 1: 2.7
Noise: 0.2

Peak table for sample 11 : **VFLLO11E**

Peak	Size [bp]	Conc. [pg/μl]	Molarity [pmol/l]	Observations
1	35	125.00	5,411.3	Lower Marker
2	10,380	75.00	10.9	Upper Marker

Region table for sample 11 : **VFLLO11E**

From [bp]	To [bp]	Average Size [bp]	Molarity [pmol/l]	Conc. [pg/μl]	Corr. Area	% of Total	Size distribution in CV [%]	Color
200	1,000	513	10.4	3.49	2.7	24	8.7	Blue

Assay Class: High Sensitivity DNA Assay
Data Path: C:\...ents and Settings\Bioanalyzer\2012-12-12\2012-12-12_001.xad

Created: 12/12/2012 10:12:37 AM
Modified: 12/12/2012 10:53:59 AM

Gel Image

