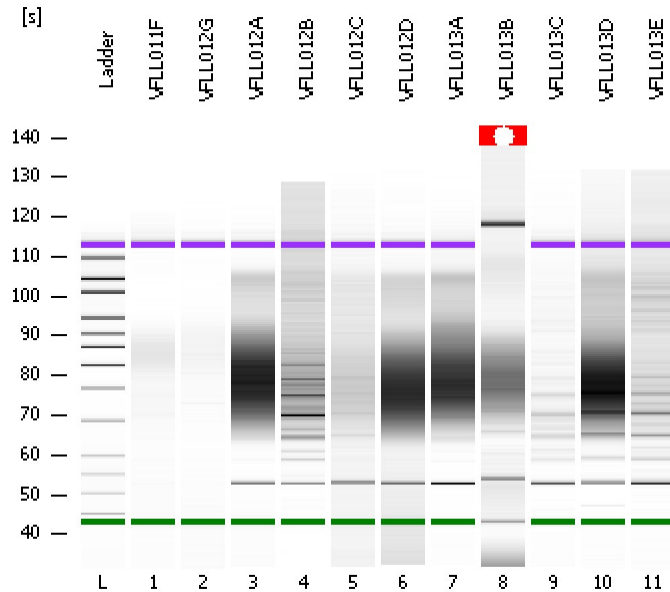


Assay Class: High Sensitivity DNA Assay
Data Path: C:\...ents and Settings\Bioanalyzer\2012-12-12\2012-12-12_002.xad

Created: 12/12/2012 11:02:16 AM
Modified: 12/12/2012 11:43:39 AM

Electrophoresis File Run Summary



Instrument Information:

Instrument Name: DE13701086 Firmware: C.01.069
Serial#: DE13701086 Type: G2938B

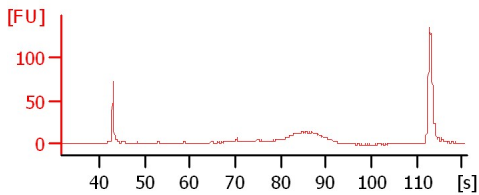
Assay Information:

Assay Origin Path: C:\Program Files\Agilent\2100 bioanalyzer\2100 expert\assays\dsDNA\High Sensitivity DNA.xsy
Assay Class: High Sensitivity DNA Assay
Version: 1.03
Assay Comments: Copyright © 2003-2010 Agilent Technologies

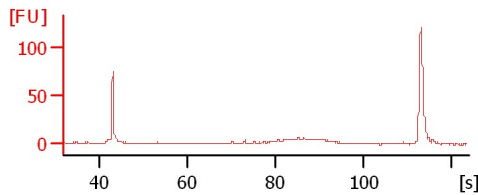
Chip Information:

Chip Lot #: Reagent Kit Lot #: Chip Comments:

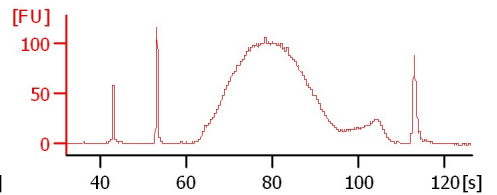
VFLLO11F



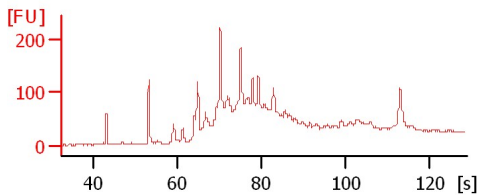
VFLLO12G



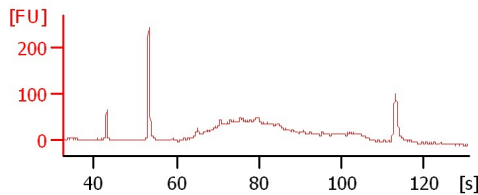
VFLLO12A



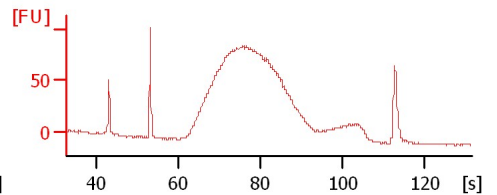
VFLLO12B



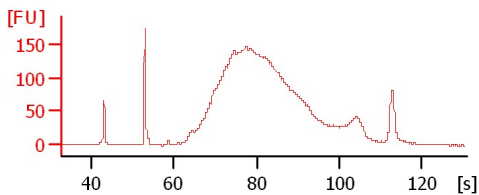
VFLLO12C



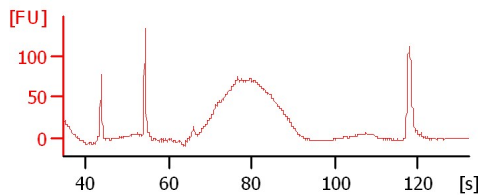
VFLLO12D



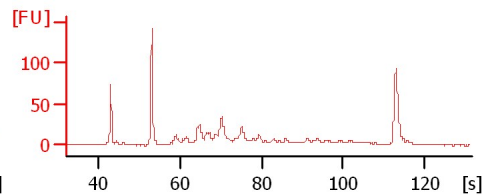
VFLLO13A



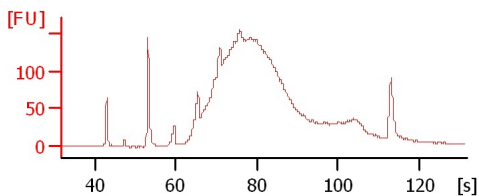
VFLLO13B



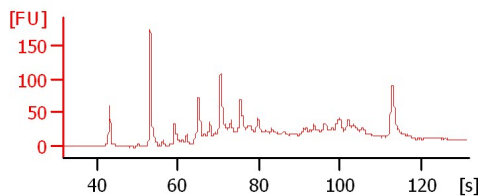
VFLLO13C



VFLLO13D



VFLLO13E



Assay Class: High Sensitivity DNA Assay
 Data Path: C:\...ents and Settings\Bioanalyzer\2012-12-12\2012-12-12_002.xad

Created: 12/12/2012 11:02:16 AM
 Modified: 12/12/2012 11:43:39 AM

Electrophoresis File Run Summary (Chip Summary)

Sample Name	Sample Comment	Rest. Digest	Status	Observation	Result Label	Result Color
VFLL011F		<input type="checkbox"/>	✓			
VFLL012G		<input type="checkbox"/>	✓			
VFLL012A		<input type="checkbox"/>	✓			
VFLL012B		<input type="checkbox"/>	✓			
VFLL012C		<input type="checkbox"/>	✓			
VFLL012D		<input type="checkbox"/>	✓			
VFLL013A		<input type="checkbox"/>	✓			
VFLL013B		<input type="checkbox"/>	✓			
VFLL013C		<input type="checkbox"/>	✓			
VFLL013D		<input type="checkbox"/>	✓			
VFLL013E		<input type="checkbox"/>	✓			
Ladder		<input type="checkbox"/>	✓			

Chip Lot #

Reagent Kit Lot #

Chip Comments :

Assay Class: High Sensitivity DNA Assay
Data Path: C:\...ents and Settings\Bioanalyzer\2012-12-12\2012-12-12_002.xad

Created: 12/12/2012 11:02:16 AM
Modified: 12/12/2012 11:43:39 AM

Electrophoresis Assay Details

General Analysis Settings

Number of Available Sample and Ladder Wells (Max.) : 12
Minimum Visible Range [s] : 32
Maximum Visible Range [s] : 138
Start Analysis Time Range [s] : 33
End Analysis Time Range [s] : 137.5
Ladder Concentration [pg/μl] : 1950
Uses Standard Area for Ladder Fragments
Lower Marker Concentration [pg/μl] : 125
Upper Marker Concentration [pg/μl] : 75
Used Upper Marker for Quantitation
Standard Curve Fit is Point to Point
Show Data Aligned to Lower and Upper Marker

Integrator Settings

Integration Start Time [s] : 33.05
Integration End Time [s] : 137
Slope Threshold : 0.8
Height Threshold [FU] : 5
Area Threshold : 0.1
Width Threshold [s] : 0.6
Baseline Plateau [s] : 0.5

Filter Settings

Filter Width [s] : 0.5
Polynomial Order : 4

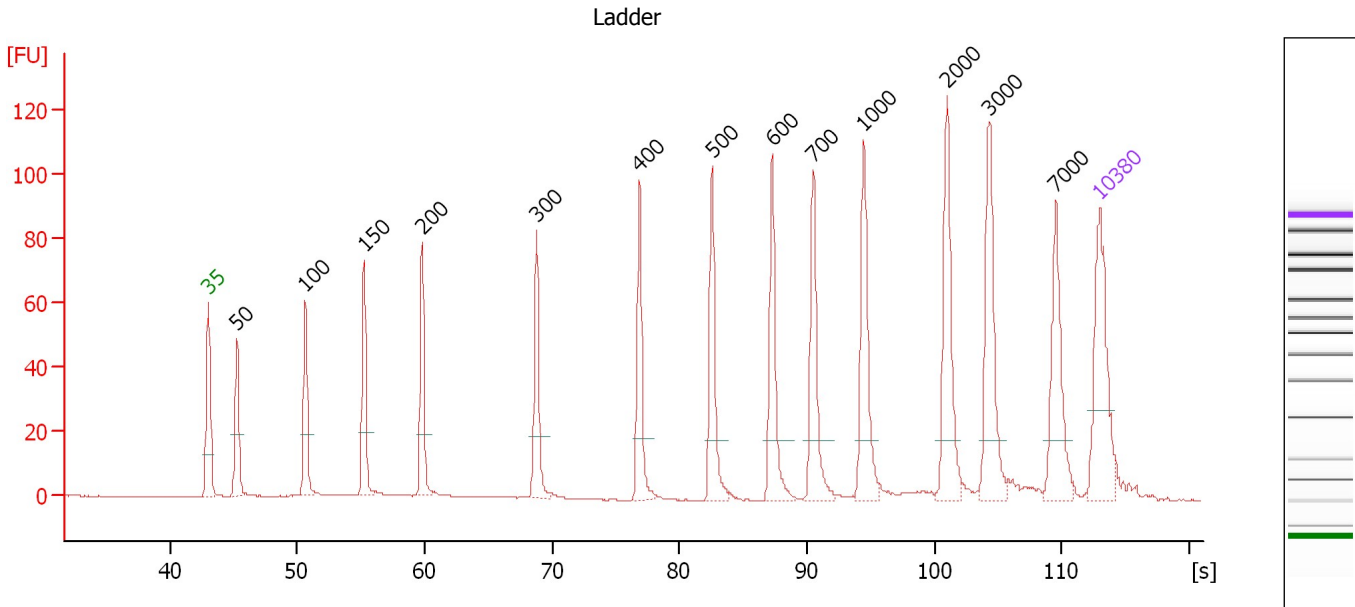
Ladder

Ladder Peak	Size	Area
1	35	160
2	50	210
3	100	208
4	150	221
5	200	242
6	300	270
7	400	305
8	500	306
9	600	336
10	700	321
11	1000	366
12	2000	413
13	3000	411
14	7000	400
15	10380	214

Assay Class: High Sensitivity DNA Assay
 Data Path: C:\...ents and Settings\Bioanalyzer\2012-12-12\2012-12-12_002.xad

Created: 12/12/2012 11:02:16 AM
 Modified: 12/12/2012 11:43:39 AM

Electropherogram Summary



Overall Results for Ladder

Noise: 0.1

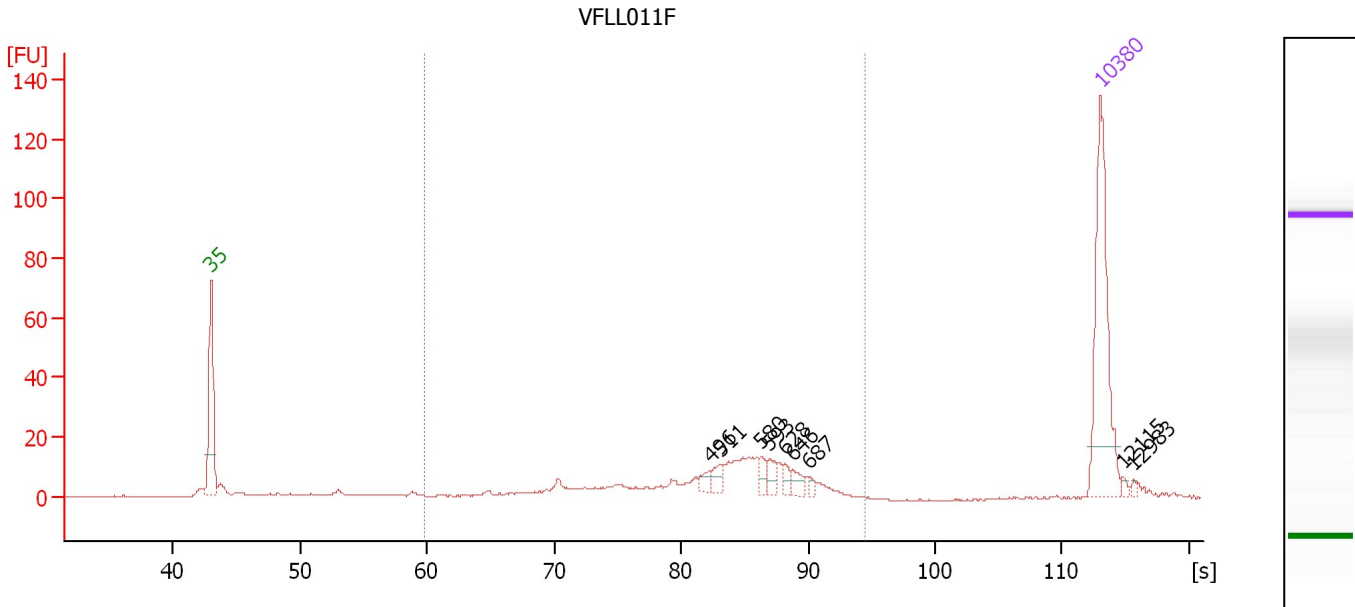
Peak table for Ladder

Peak	Size [bp]	Conc. [pg/μl]	Molarity [pmol/l]	Observations
1	35	125.00	5,411.3	Lower Marker
2	50	150.00	4,545.5	Ladder Peak
3	100	150.00	2,272.7	Ladder Peak
4	150	150.00	1,515.2	Ladder Peak
5	200	150.00	1,136.4	Ladder Peak
6	300	150.00	757.6	Ladder Peak
7	400	150.00	568.2	Ladder Peak
8	500	150.00	454.5	Ladder Peak
9	600	150.00	378.8	Ladder Peak
10	700	150.00	324.7	Ladder Peak
11	1,000	150.00	227.3	Ladder Peak
12	2,000	150.00	113.6	Ladder Peak
13	3,000	150.00	75.8	Ladder Peak
14	7,000	150.00	32.5	Ladder Peak
15	10,380	75.00	10.9	Upper Marker

Assay Class: High Sensitivity DNA Assay
 Data Path: C:\...ents and Settings\Bioanalyzer\2012-12-12\2012-12-12_002.xad

Created: 12/12/2012 11:02:16 AM
 Modified: 12/12/2012 11:43:39 AM

Electropherogram Summary Continued ...



Overall Results for sample 1 : VFL011F

Number of peaks found: 9 Corr. Area 1: 195.6
 Noise: 0.2

Peak table for sample 1 : VFL011F

Peak	Size [bp]	Conc. [pg/μl]	Molarity [pmol/l]	Observations
1	35	125.00	5,411.3	Lower Marker
2	496	6.26	19.1	
3	511	8.11	24.0	
4	580	6.41	16.8	
5	593	8.05	20.6	
6	628	5.36	12.9	
7	646	7.40	17.4	
8	687	3.01	6.6	
9	10,380	75.00	10.9	Upper Marker
10	12,115	0.00	0.0	
11	12,983	0.00	0.0	

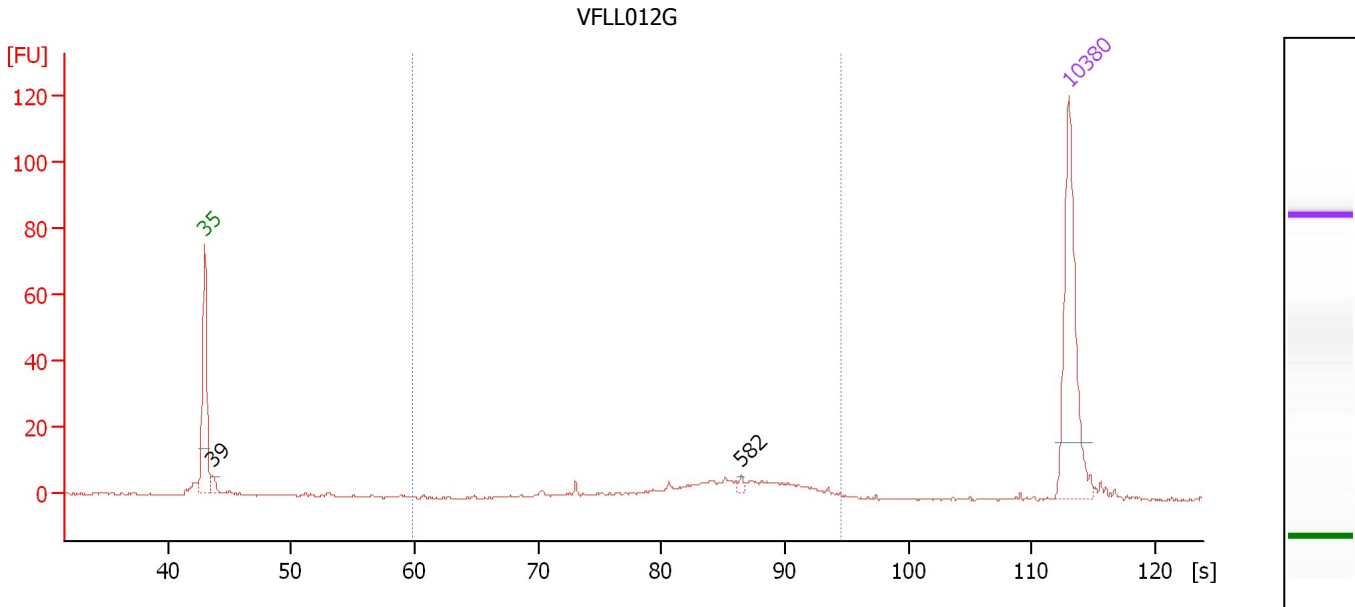
Region table for sample 1 : VFL011F

From [bp]	To [bp]	Average Size [bp]	Molarity [pmol/l]	Conc. [pg/μl]	Corr. Area	% of Total	Size distribution in CV [%]	Color
200	1,000	518	497.5	153.03	195.6	81	23.8	Blue

Assay Class: High Sensitivity DNA Assay
 Data Path: C:\...ents and Settings\Bioanalyzer\2012-12-12\2012-12-12_002.xad

Created: 12/12/2012 11:02:16 AM
 Modified: 12/12/2012 11:43:39 AM

Electropherogram Summary Continued ...



Overall Results for sample 2 : VFL012G

Number of peaks found: 2 Corr. Area 1: 78.0
 Noise: 0.2

Peak table for sample 2 : VFL012G

Peak	Size [bp]	Conc. [pg/μl]	Molarity [pmol/l]	Observations
1	35	125.00	5,411.3	Lower Marker
2	39	7.51	291.7	
3	582	2.54	6.6	
4	10,380	75.00	10.9	Upper Marker

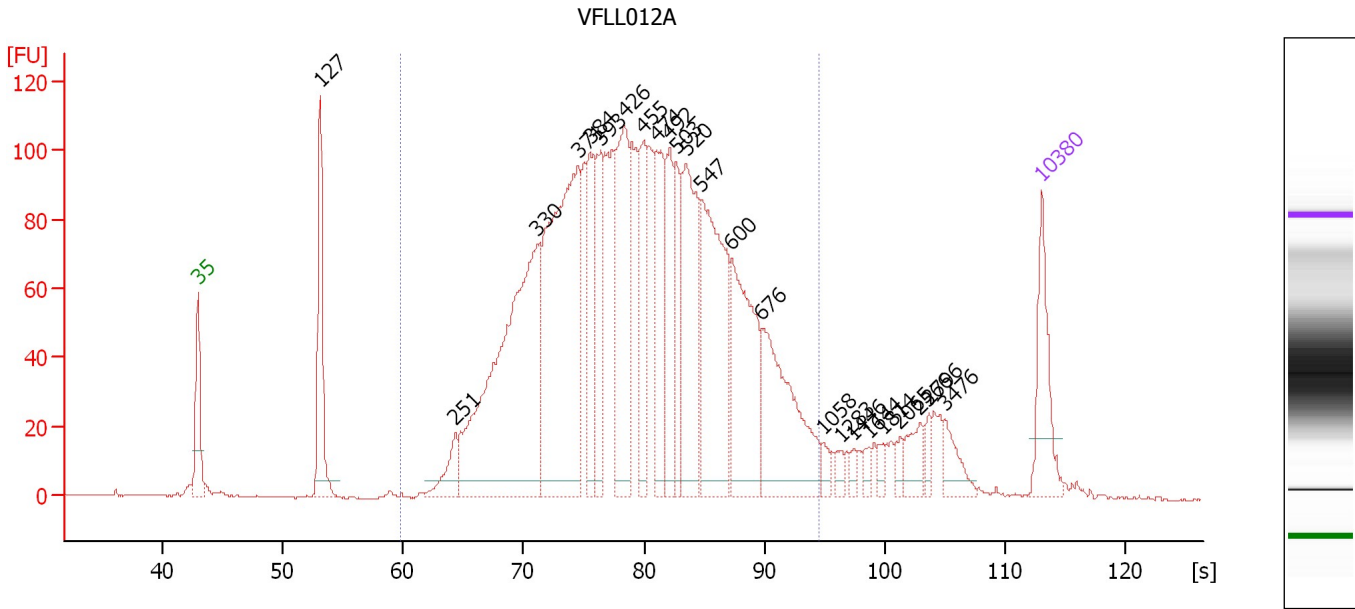
Region table for sample 2 : VFL012G

From [bp]	To [bp]	Average Size [bp]	Molarity [pmol/l]	Conc. [pg/μl]	Corr. Area	% of Total	Size distribution in CV [%]	Color
200	1,000	581	192.7	68.24	78.0	75	23.9	Blue

Assay Class: High Sensitivity DNA Assay
 Data Path: C:\...ents and Settings\Bioanalyzer\2012-12-12\2012-12-12_002.xad

Created: 12/12/2012 11:02:16 AM
 Modified: 12/12/2012 11:43:39 AM

Electropherogram Summary Continued ...



Overall Results for sample 3 : VFLLO12A

Number of peaks found: 24 Corr. Area 1: 2,765.2
 Noise: 0.2


Peak table for sample 3 : VFLLO12A

Peak	Size [bp]	Conc. [pg/μl]	Molarity [pmol/l]	Observations
1	35	125.00	5,411.3	Lower Marker
2	127	195.64	2,334.0	
3	251	53.05	320.5	
4	330	629.66	2,894.6	
5	371	541.17	2,211.0	
6	384	113.38	447.9	
7	393	135.22	520.7	
8	426	225.64	802.8	
9	455	116.02	386.5	
10	474	141.03	450.4	
11	492	109.03	335.5	
12	503	90.23	271.7	
13	520	226.87	660.9	
14	547	291.23	806.0	
15	600	210.64	531.6	
16	676	221.08	495.6	
17	1,058	13.86	19.8	
18	1,283	11.94	14.1	
19	1,446	9.26	9.7	
20	1,644	9.98	9.2	
21	1,814	9.07	7.6	
22	2,065	11.69	8.6	
23	2,566	30.49	18.0	
24	2,796	12.65	6.9	
25	3,476	30.55	13.3	
26	10,380	75.00	10.9	Upper Marker

Assay Class: High Sensitivity DNA Assay
Data Path: C:\...ents and Settings\Bioanalyzer\2012-12-12\2012-12-12_002.xad

Created: 12/12/2012 11:02:16 AM
Modified: 12/12/2012 11:43:39 AM

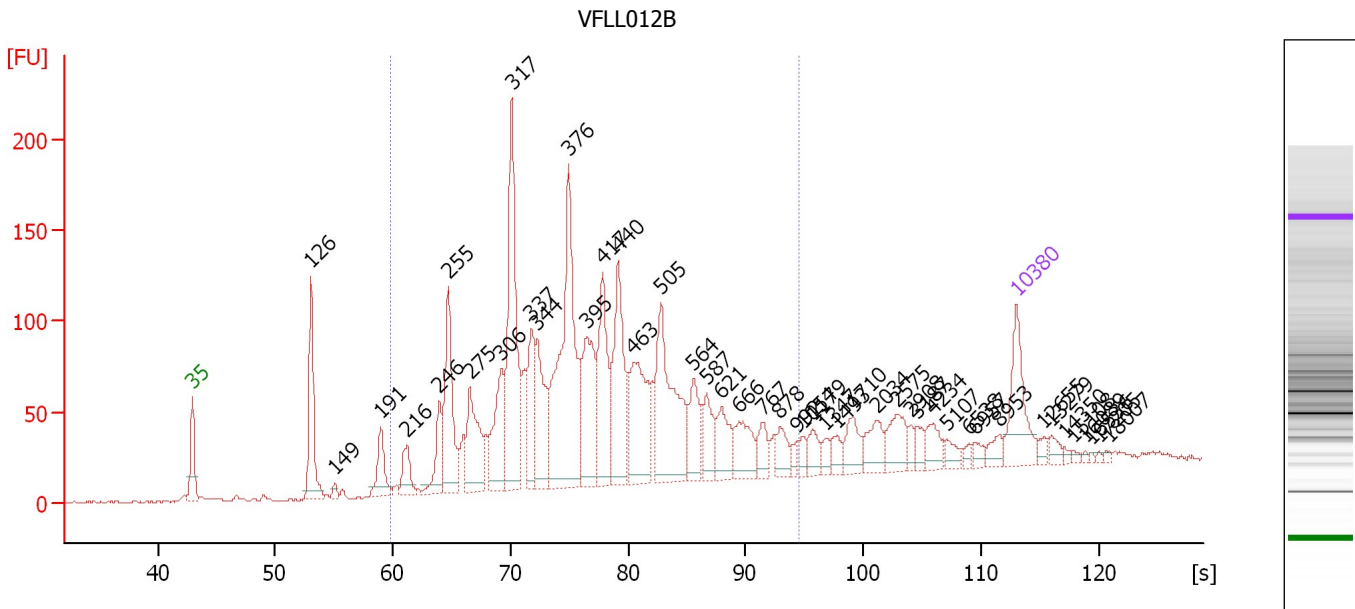
Electropherogram Summary Continued ...**... Region table for sample 3 : VFLL012A**

From [bp]	To [bp]	Average Size [bp]	Molarity [pmol/l]	Conc. [pg/μl]	Corr. Area	% of Total	Size distribution in CV [%]	Co lor
200	1,000	463	13,362.6	3,647.80	2,765.2	89	29.6	

Assay Class: High Sensitivity DNA Assay
 Data Path: C:\...ents and Settings\Bioanalyzer\2012-12-12\2012-12-12_002.xad

Created: 12/12/2012 11:02:16 AM
 Modified: 12/12/2012 11:43:39 AM

Electropherogram Summary Continued ...



Overall Results for sample 4 : VFLLO12B

Number of peaks found: 46 Corr. Area 1: 2,330.7
 Noise: 0.4

Peak table for sample 4 : VFLLO12B

Peak	Size [bp]	Conc. [pg/μl]	Molarity [pmol/l]	Observations
1	35	125.00	5,411.3	Lower Marker
2	126	158.45	1,902.6	
3	149	9.48	96.7	
4	191	62.20	493.2	
5	216	44.46	312.1	
6	246	60.79	373.9	
7	255	159.21	946.1	
8	275	116.17	639.4	
9	306	117.28	581.0	
10	317	281.00	1,345.0	
11	337	96.50	433.3	
12	344	112.48	496.0	
13	376	359.45	1,447.3	
14	395	130.92	501.6	
15	417	140.60	511.1	
16	440	164.39	566.0	
17	463	149.90	490.2	
18	505	213.64	641.0	
19	564	65.17	175.1	
20	587	49.24	127.1	
21	621	55.28	134.9	
22	666	58.93	134.1	
23	767	30.75	60.7	
24	878	28.45	49.1	
25	992	10.23	15.6	
26	1,054	11.30	16.3	

Assay Class: High Sensitivity DNA Assay
 Data Path: C:\...ents and Settings\Bioanalyzer\2012-12-12\2012-12-12_002.xad


Created: 12/12/2012 11:02:16 AM
 Modified: 12/12/2012 11:43:39 AM

Electropherogram Summary Continued ...

... Peak table for sample 4 : VFLL012B

Peak	Size [bp]	Conc. [pg/µl]	Molarity [pmol/l]	Observations
27	1,179	24.64	31.7	
28	1,347	12.26	13.8	
29	1,493	17.54	17.8	
30	1,710	33.60	29.8	
31	2,034	34.06	25.4	
32	2,575	40.82	24.0	
33	2,908	10.88	5.7	
34	3,187	14.21	6.8	
35	4,234	25.93	9.3	
36	5,107	12.90	3.8	
37	6,538	7.03	1.6	
38	6,957	10.16	2.2	
39	8,953	14.87	2.5	
40	10,380	75.00	10.9	Upper Marker
41	12,655	0.00	0.0	
42	13,279	0.00	0.0	
43	14,350	0.00	0.0	
44	15,108	0.00	0.0	
45	16,089	0.00	0.0	
46	16,536	0.00	0.0	
47	17,205	0.00	0.0	
48	18,007	0.00	0.0	

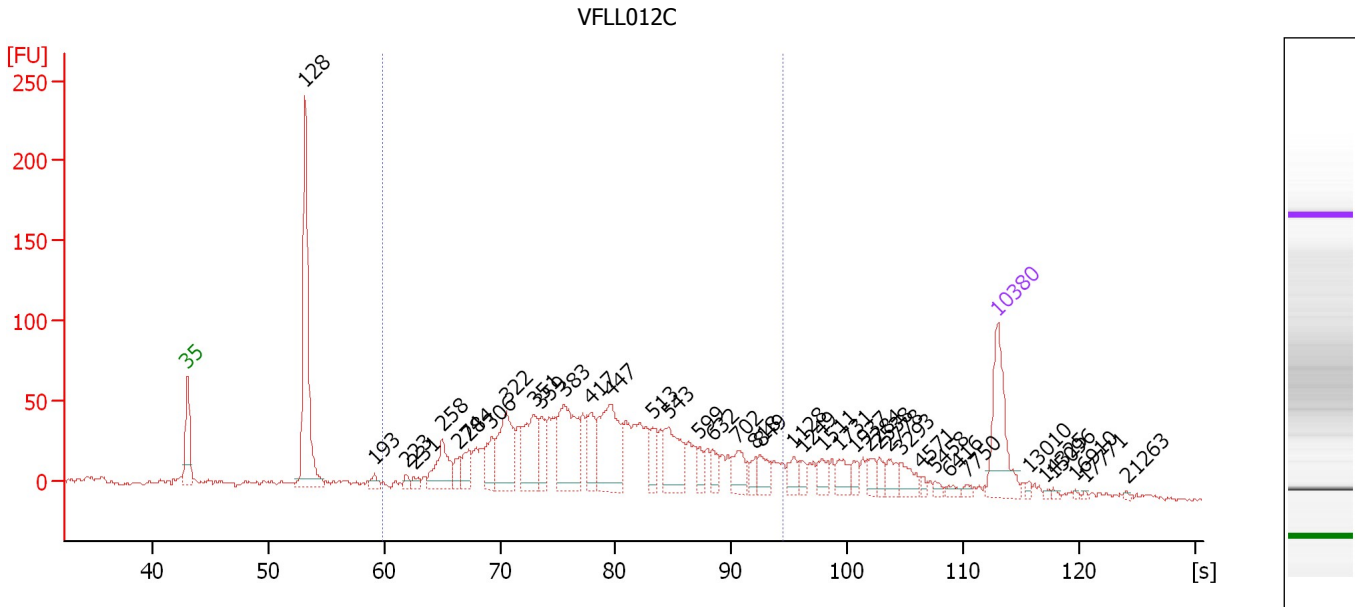
Region table for sample 4 : VFLL012B

From [bp]	To [bp]	Average Size [bp]	Molarity [pmol/l]	Conc. [pg/µl]	Corr. Area	% of Total	Size distribution in CV [%]	Color
200	1,000	429	9,869.2	2,451.80	2,330.7	81	33.0	

Assay Class: High Sensitivity DNA Assay
 Data Path: C:\...ents and Settings\Bioanalyzer\2012-12-12\2012-12-12_002.xad

Created: 12/12/2012 11:02:16 AM
 Modified: 12/12/2012 11:43:39 AM

Electropherogram Summary Continued ...



Overall Results for sample 5 : VFL012C

Number of peaks found: 40 Corr. Area 1: 1,372.7
 Noise: 1.6

Peak table for sample 5 : VFL012C

Peak	Size [bp]	Conc. [pg/μl]	Molarity [pmol/l]	Observations
1	35	125.00	5,411.3	Lower Marker
2	128	312.66	3,701.3	
3	193	10.92	85.8	
4	223	8.47	57.4	
5	231	9.55	62.6	
6	258	66.14	387.7	
7	274	20.62	113.8	
8	284	30.56	163.2	
9	306	42.68	211.3	
10	322	97.08	456.6	
11	351	83.50	360.1	
12	359	37.52	158.2	
13	383	120.59	476.5	
14	417	45.64	165.8	
15	447	123.21	417.3	
16	513	29.09	85.9	
17	543	67.16	187.5	
18	599	15.55	39.4	
19	632	17.37	41.6	
20	702	31.28	67.5	
21	818	15.47	28.7	
22	849	20.35	36.3	
23	1,128	17.08	22.9	
24	1,249	10.65	12.9	
25	1,511	16.63	16.7	
26	1,731	18.44	16.1	

Assay Class: High Sensitivity DNA Assay
 Data Path: C:\...ents and Settings\Bioanalyzer\2012-12-12\2012-12-12_002.xad


Created: 12/12/2012 11:02:16 AM
 Modified: 12/12/2012 11:43:39 AM

Electropherogram Summary Continued ...

... Peak table for sample 5 : VFLL012C

Peak	Size [bp]	Conc. [pg/µl]	Molarity [pmol/l]	Observations
27	1,937	10.71	8.4	
28	2,284	13.65	9.1	
29	2,538	10.36	6.2	
30	2,778	15.12	8.2	
31	3,293	18.86	8.7	
32	4,571	4.15	1.4	
33	5,458	4.68	1.3	
34	6,416	5.11	1.2	
35	7,750	4.16	0.8	
36	10,380	75.00	10.9	Upper Marker
37	13,010	0.00	0.0	
38	14,325	0.00	0.0	
39	15,096	0.00	0.0	
40	16,910	0.00	0.0	
41	17,771	0.00	0.0	
42	21,263	0.00	0.0	

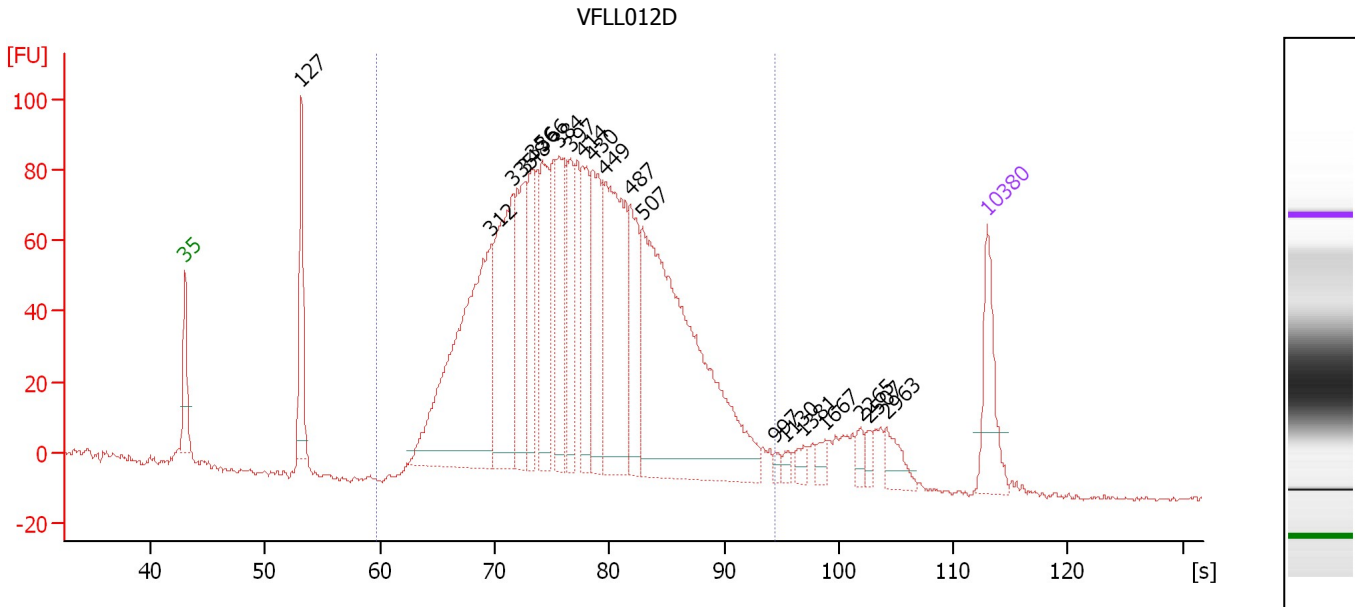
Region table for sample 5 : VFLL012C

From [bp]	To [bp]	Average Size [bp]	Molarity [pmol/l]	Conc. [pg/µl]	Corr. Area	% of Total	Size distribution in CV [%]	Color
200	1,000	459	4,638.7	1,215.33	1,372.7	68	34.2	

Assay Class: High Sensitivity DNA Assay
 Data Path: C:\...ents and Settings\Bioanalyzer\2012-12-12\2012-12-12_002.xad

Created: 12/12/2012 11:02:16 AM
 Modified: 12/12/2012 11:43:39 AM

Electropherogram Summary Continued ...



Overall Results for sample 6 : VFL012D

Number of peaks found: 20 Corr. Area 1: 2,233.9
 Noise: 0.7

Peak table for sample 6 : VFL012D

Peak	Size [bp]	Conc. [pg/μl]	Molarity [pmol/l]	Observations
1	35	125.00	5,411.3	Lower Marker
2	127	163.19	1,945.9	
3	312	542.76	2,638.9	
4	335	290.32	1,313.9	
5	348	165.38	719.9	
6	356	129.88	552.5	
7	366	171.10	708.3	
8	384	152.93	603.4	
9	397	100.70	384.6	
10	414	126.73	463.5	
11	430	165.78	584.3	
12	449	306.15	1,033.6	
13	487	131.54	409.5	
14	507	681.71	2,038.3	
15	997	7.84	11.9	
16	1,130	7.92	10.6	
17	1,381	13.15	14.4	
18	1,667	13.84	12.6	
19	2,265	12.96	8.7	
20	2,507	10.68	6.5	
21	2,963	28.92	14.8	
22	10,380	75.00	10.9	Upper Marker

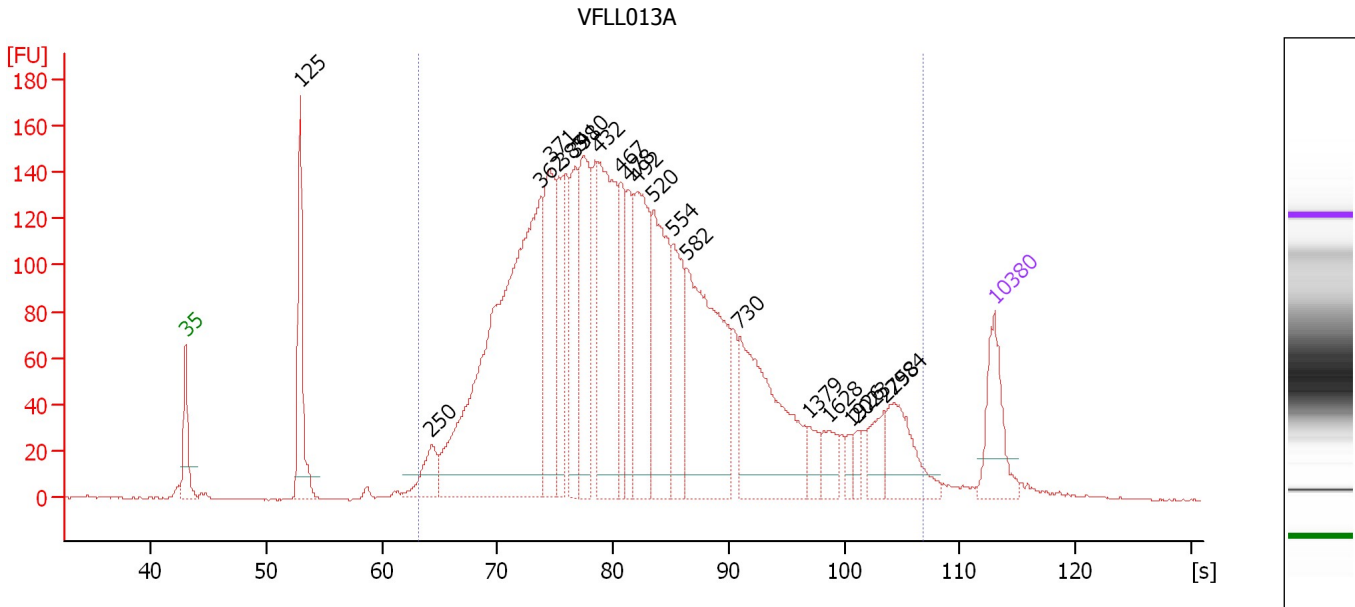
Region table for sample 6 : VFL012D

From [bp]	To [bp]	Average Size [bp]	Molarity [pmol/l]	Conc. [pg/μl]	Corr. Area	% of Total	Size distribution in CV [%]	Color
200	1,000	432	12,355.8	3,193.94	2,233.9	91	28.0	Blue

Assay Class: High Sensitivity DNA Assay
 Data Path: C:\...ents and Settings\Bioanalyzer\2012-12-12\2012-12-12_002.xad

Created: 12/12/2012 11:02:16 AM
 Modified: 12/12/2012 11:43:39 AM

Electropherogram Summary Continued ...



Setpoint Deviations for sample 7 : VFL013A

Height Threshold [FU] : 10

Overall Results for sample 7 : VFL013A

Number of peaks found: 21 Corr. Area 1: 4,162.3
 Noise: 0.3

Peak table for sample 7 : VFL013A

Peak	Size [bp]	Conc. [pg/μl]	Molarity [pmol/l]	Observations
1	35	125.00	5,411.3	Lower Marker
2	125	217.15	2,639.1	
3	250	62.63	380.1	
4	362	890.04	3,727.1	
5	371	216.58	884.5	
6	385	134.92	530.5	
7	398	142.18	541.3	
8	410	212.10	783.4	
9	432	312.37	1,094.9	
10	467	97.88	317.9	
11	478	95.23	301.9	
12	492	240.49	740.8	
13	520	227.72	663.9	
14	554	131.39	359.2	
15	582	349.45	910.2	
16	730	278.67	578.3	
17	1,379	26.20	28.8	
18	1,628	32.97	30.7	
19	1,926	12.77	10.0	
20	2,023	13.22	9.9	
21	2,758	39.93	21.9	
22	2,984	79.40	40.3	

Assay Class: High Sensitivity DNA Assay
Data Path: C:\...ents and Settings\Bioanalyzer\2012-12-12\2012-12-12_002.xad

Created: 12/12/2012 11:02:16 AM
Modified: 12/12/2012 11:43:39 AM

Electropherogram Summary Continued ...**... Peak table for sample 7 : VFLLO13A**

Peak	Size [bp]	Conc. [pg/ μ l]	Molarity [pmol/l]	Observations
23	10,380	75.00	10.9	Upper Marker

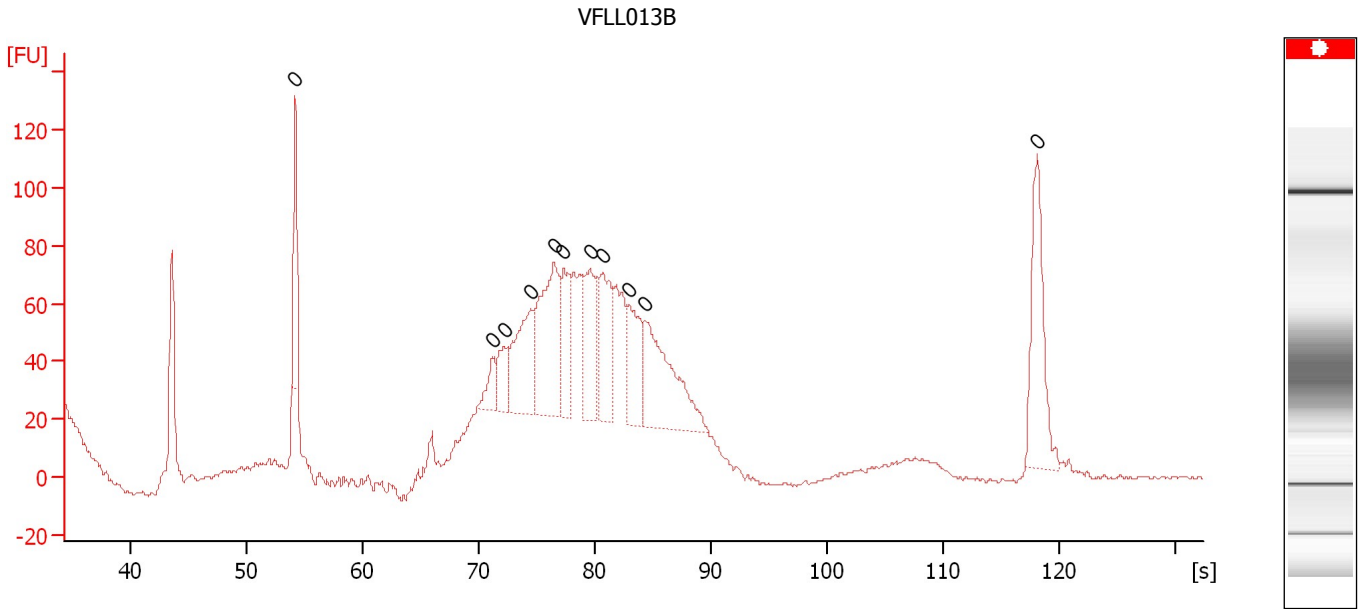
Region table for sample 7 : VFLLO13A

From [bp]	To [bp]	Average Size [bp]	Molarity [pmol/l]	Conc. [pg/ μ l]	Corr. Area	% of Total	Size distribution in CV [%]	Color
238	4,940	681	13,155.8	3,877.96	4,162.3	95	97.9	

Assay Class: High Sensitivity DNA Assay
Data Path: C:\...ents and Settings\Bioanalyzer\2012-12-12\2012-12-12_002.xad

Created: 12/12/2012 11:02:16 AM
Modified: 12/12/2012 11:43:39 AM

Electropherogram Summary Continued ...



Overall Results for sample 8 : VFL013B

Number of peaks found: 0 Noise: 0.6

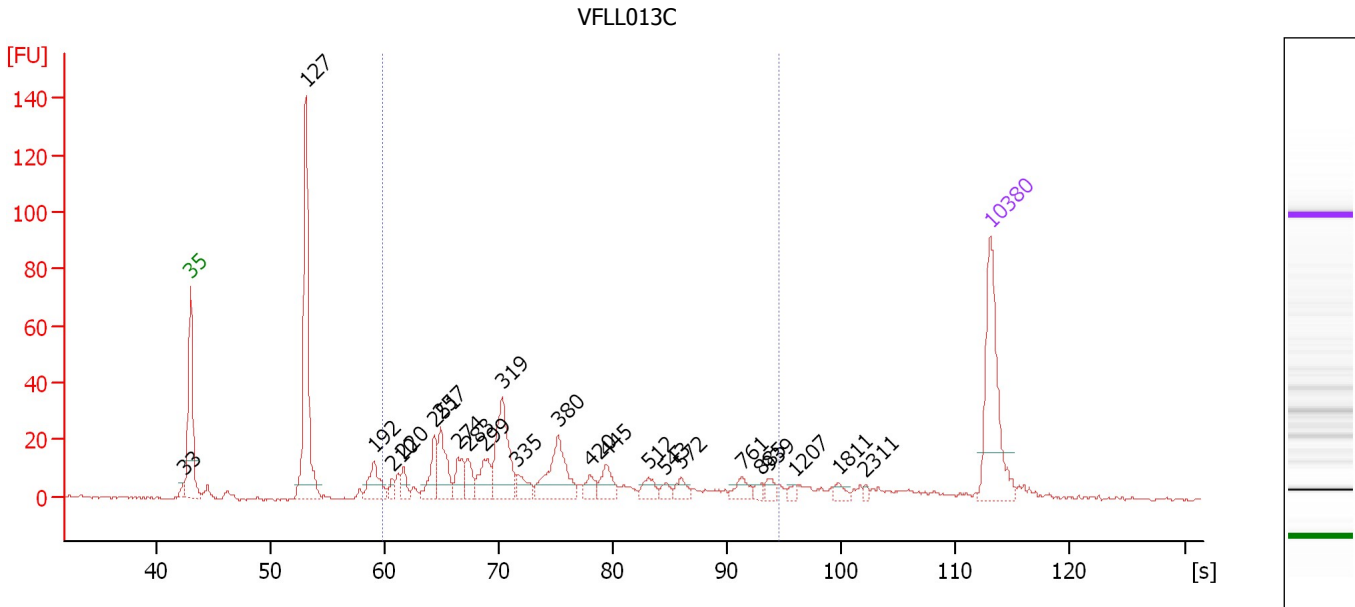
Peak table for sample 8 : VFL013B

Peak	Size [bp]	Conc. [pg/μl]	Molarity [pmol/l]	Observations
1	0	0.00	0.0	
2	0	0.00	0.0	
3	0	0.00	0.0	
4	0	0.00	0.0	
5	0	0.00	0.0	
6	0	0.00	0.0	
7	0	0.00	0.0	
8	0	0.00	0.0	
9	0	0.00	0.0	
10	0	0.00	0.0	
11	0	0.00	0.0	

Assay Class: High Sensitivity DNA Assay
 Data Path: C:\...ents and Settings\Bioanalyzer\2012-12-12\2012-12-12_002.xad

Created: 12/12/2012 11:02:16 AM
 Modified: 12/12/2012 11:43:39 AM

Electropherogram Summary Continued ...



Overall Results for sample 9 : VFLLO13C

Number of peaks found: 24 Corr. Area 1: 371.1
 Noise: 0.5


Peak table for sample 9 : VFLLO13C

Peak	Size [bp]	Conc. [pg/μl]	Molarity [pmol/l]	Observations
1	33	0.00	0.0	
2	35	125.00	5,411.3	Lower Marker
3	127	201.51	2,405.6	
4	192	33.48	263.9	
5	210	7.50	54.2	
6	220	12.82	88.1	
7	251	31.48	190.2	
8	257	40.76	240.3	
9	274	21.94	121.4	
10	283	17.79	95.2	
11	299	28.27	143.0	
12	319	73.73	350.1	
13	335	16.25	73.4	
14	380	58.63	234.1	
15	420	11.68	42.2	
16	445	19.15	65.2	
17	512	12.79	37.9	
18	543	6.74	18.8	
19	572	9.91	26.2	
20	761	11.61	23.1	
21	885	4.69	8.0	
22	939	7.39	11.9	
23	1,207	3.63	4.6	
24	1,811	5.16	4.3	
25	2,311	2.15	1.4	
26	10,380	75.00	10.9	Upper Marker

Assay Class: High Sensitivity DNA Assay
Data Path: C:\...ents and Settings\Bioanalyzer\2012-12-12\2012-12-12_002.xad

Created: 12/12/2012 11:02:16 AM
Modified: 12/12/2012 11:43:39 AM

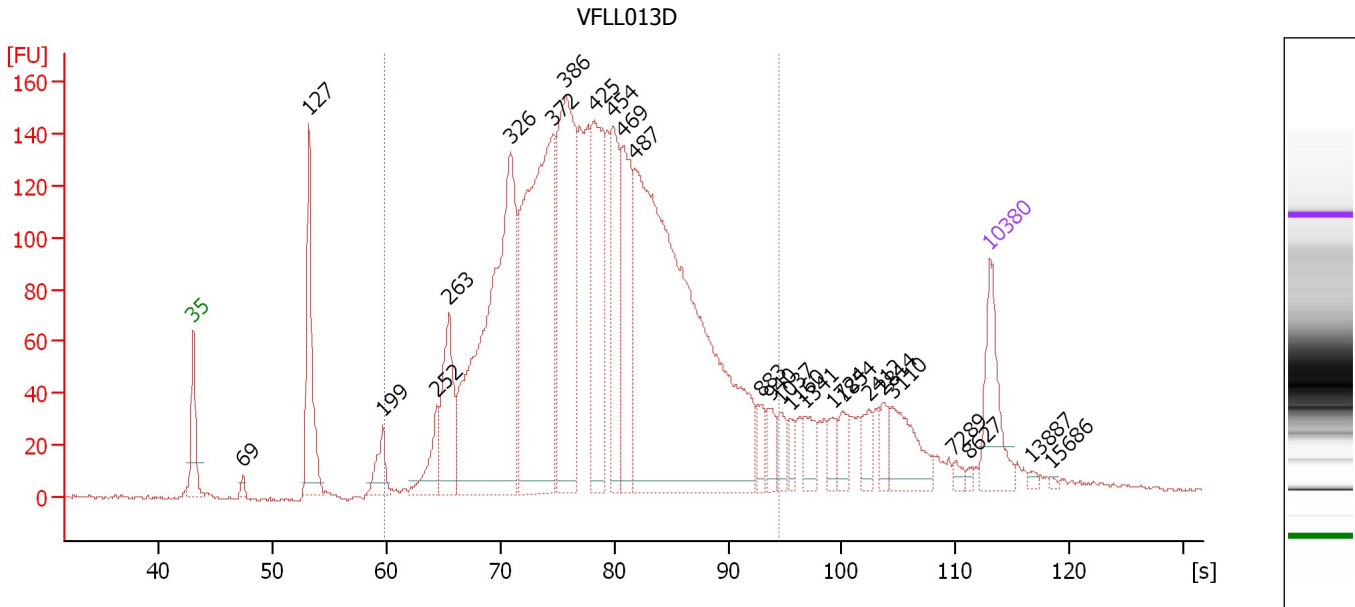
Electropherogram Summary Continued ...**... Region table for sample 9 : VFLL013C**

From [bp]	To [bp]	Average Size [bp]	Molarity [pmol/l]	Conc. [pg/μl]	Corr. Area	% of Total	Size distribution in CV [%]	Co lor
200	1,000	395	1,897.0	413.15	371.1	62	42.9	

Assay Class: High Sensitivity DNA Assay
 Data Path: C:\...ents and Settings\Bioanalyzer\2012-12-12\2012-12-12_002.xad

Created: 12/12/2012 11:02:16 AM
 Modified: 12/12/2012 11:43:39 AM

Electropherogram Summary Continued ...



Overall Results for sample 10 : VFL013D

Number of peaks found: 26 Corr. Area 1: 3,621.1
 Noise: 0.9

Peak table for sample 10 : VFL013D

Peak	Size [bp]	Conc. [pg/μl]	Molarity [pmol/l]	Observations
1	35	125.00	5,411.3	Lower Marker
2	69	9.54	208.7	
3	127	209.54	2,492.7	
4	199	48.74	371.7	
5	252	61.99	373.1	
6	263	139.69	803.9	
7	326	634.36	2,945.4	
8	372	562.58	2,289.0	
9	386	374.23	1,469.8	
10	425	232.21	828.7	
11	454	155.89	520.7	
12	469	183.04	592.0	
13	487	991.97	3,087.8	
14	883	22.10	37.9	
15	940	27.02	43.6	
16	1,037	21.89	32.0	
17	1,160	14.64	19.1	
18	1,341	29.80	33.7	
19	1,724	19.42	17.1	
20	1,854	22.08	18.0	
21	2,412	20.75	13.0	
22	2,814	21.18	11.4	
23	3,110	64.78	31.6	
24	7,289	7.77	1.6	
25	8,627	3.47	0.6	
26	10,380	75.00	10.9	Upper Marker

Assay Class: High Sensitivity DNA Assay
Data Path: C:\...ents and Settings\Bioanalyzer\2012-12-12\2012-12-12_002.xad

Created: 12/12/2012 11:02:16 AM
Modified: 12/12/2012 11:43:39 AM

Electropherogram Summary Continued ...**... Peak table for sample 10 : VFL013D**

Peak	Size [bp]	Conc. [pg/μl]	Molarity [pmol/l]	Observations
27	13,887	0.00	0.0	
28	15,686	0.00	0.0	

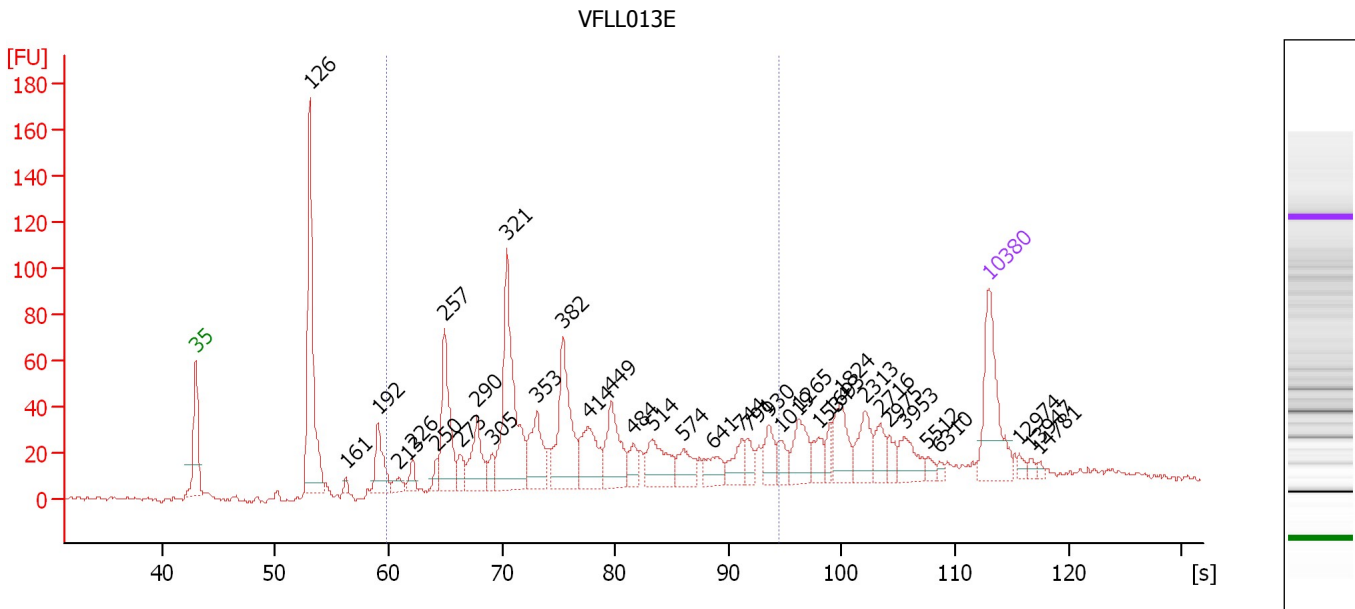
Region table for sample 10 : VFL013D

From [bp]	To [bp]	Average Size [bp]	Molarity [pmol/l]	Conc. [pg/μl]	Corr. Area	% of Total	Size distribution in CV [%]	Color
200	1,000	448	13,940.5	3,673.95	3,621.1	85	30.6	

Assay Class: High Sensitivity DNA Assay
 Data Path: C:\...ents and Settings\Bioanalyzer\2012-12-12\2012-12-12_002.xad

Created: 12/12/2012 11:02:16 AM
 Modified: 12/12/2012 11:43:39 AM

Electropherogram Summary Continued ...



Overall Results for sample 11 : VFL013E

Number of peaks found: 36 Corr. Area 1: 950.8
 Noise: 1.0

Peak table for sample 11 : VFL013E

Peak	Size [bp]	Conc. [pg/μl]	Molarity [pmol/l]	Observations
1	35	125.00	5,411.3	Lower Marker
2	126	261.94	3,143.2	
3	161	5.73	53.9	
4	192	53.32	420.5	
5	213	11.55	82.3	
6	226	16.55	110.8	
7	250	13.27	80.4	
8	257	106.59	627.3	
9	273	19.14	106.1	
10	290	60.51	316.5	
11	305	16.03	79.7	
12	321	187.00	883.5	
13	353	64.86	278.0	
14	382	114.18	453.4	
15	414	63.22	231.5	
16	449	68.13	230.0	
17	484	20.54	64.3	
18	514	52.20	153.7	
19	574	29.51	77.9	
20	641	23.99	56.8	
21	744	26.02	53.0	
22	791	16.63	31.9	
23	930	25.53	41.6	
24	1,019	17.83	26.5	
25	1,265	35.56	42.6	
26	1,534	18.25	18.0	

Assay Class: High Sensitivity DNA Assay
 Data Path: C:\...ents and Settings\Bioanalyzer\2012-12-12\2012-12-12_002.xad


Created: 12/12/2012 11:02:16 AM
 Modified: 12/12/2012 11:43:39 AM

Electropherogram Summary Continued ...

... Peak table for sample 11 : VFLL013E

Peak	Size [bp]	Conc. [pg/μl]	Molarity [pmol/l]	Observations
27	1,693	11.38	10.2	
28	1,824	37.97	31.5	
29	2,313	32.58	21.3	
30	2,716	19.19	10.7	
31	2,975	11.93	6.1	
32	3,953	26.49	10.2	
33	5,512	6.75	1.9	
34	6,310	4.12	1.0	
35	10,380	75.00	10.9	Upper Marker
36	12,974	0.00	0.0	
37	13,947	0.00	0.0	
38	14,781	0.00	0.0	

Region table for sample 11 : VFLL013E

From [bp]	To [bp]	Average Size [bp]	Molarity [pmol/l]	Conc. [pg/μl]	Corr. Area	% of Total	Size distribution in CV [%]	Color
200	1,000	441	4,221.4	1,020.22	950.8	61	40.8	

Assay Class: High Sensitivity DNA Assay
Data Path: C:\...ents and Settings\Bioanalyzer\2012-12-12\2012-12-12_002.xad

Created: 12/12/2012 11:02:16 AM
Modified: 12/12/2012 11:43:39 AM

Gel Image

