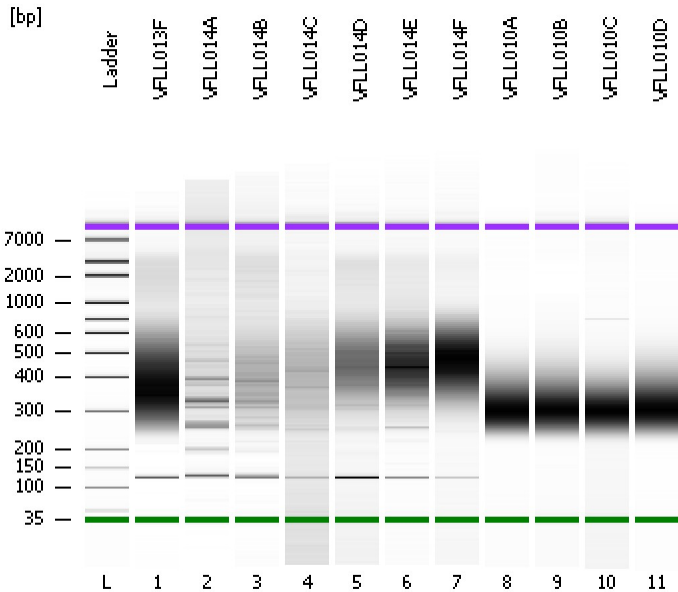


Assay Class: High Sensitivity DNA Assay
Data Path: C:\...ents and Settings\Bioanalyzer\2012-12-12\2012-12-12_003.xad

Created: 12/12/2012 11:49:10 AM
Modified: 12/12/2012 12:30:31 PM

Electrophoresis File Run Summary



Instrument Information:

Instrument Name: DE13701086 Firmware: C.01.069
Serial#: DE13701086 Type: G2938B

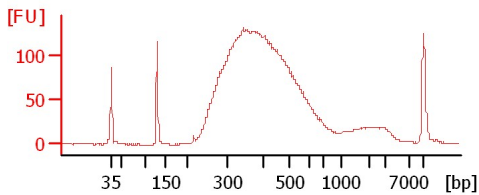
Assay Information:

Assay Origin Path: C:\Program Files\Agilent\2100 bioanalyzer\2100 expert\assays\dsDNA\High Sensitivity DNA.xsy
Assay Class: High Sensitivity DNA Assay
Version: 1.03
Assay Comments: Copyright © 2003-2010 Agilent Technologies

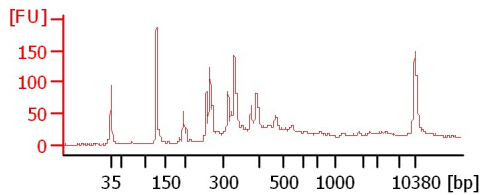
Chip Information:

Chip Lot #:
Reagent Kit Lot #:
Chip Comments:

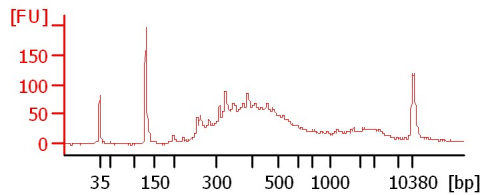
VFLLO13F



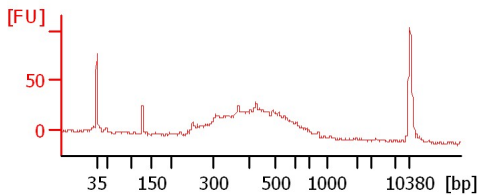
VFLLO14A



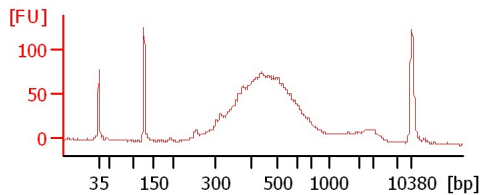
VFLLO14B



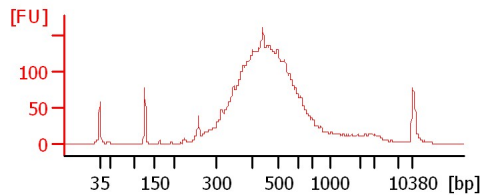
VFLLO14C



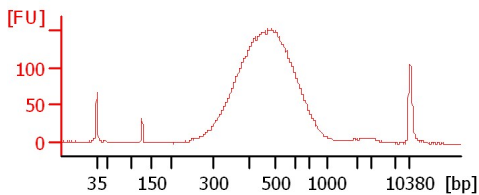
VFLLO14D



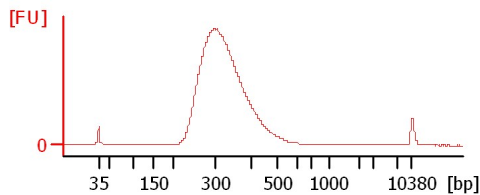
VFLLO14E



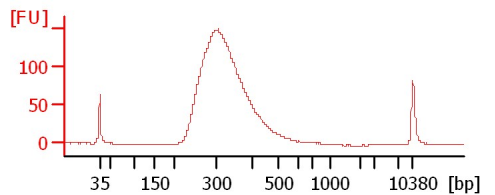
VFLLO14F



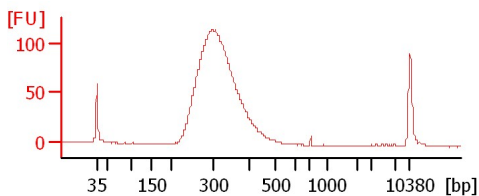
VFLLO10A



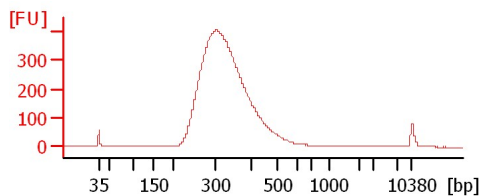
VFLLO10B



VFLLO10C



VFLLO10D



Assay Class: High Sensitivity DNA Assay
 Data Path: C:\...ents and Settings\Bioanalyzer\2012-12-12\2012-12-12_003.xad

Created: 12/12/2012 11:49:10 AM
 Modified: 12/12/2012 12:30:31 PM

Electrophoresis File Run Summary (Chip Summary)

Sample Name	Sample Comment	Rest. Digest	Status	Observation	Result Label	Result Color
VFLL013F		<input type="checkbox"/>	✓			
VFLL014A		<input type="checkbox"/>	✓			
VFLL014B		<input type="checkbox"/>	✓			
VFLL014C		<input type="checkbox"/>	✓			
VFLL014D		<input type="checkbox"/>	✓			
VFLL014E		<input type="checkbox"/>	✓			
VFLL014F		<input type="checkbox"/>	✓			
VFLL010A		<input type="checkbox"/>	✓			
VFLL010B		<input type="checkbox"/>	✓			
VFLL010C		<input type="checkbox"/>	✓			
VFLL010D		<input type="checkbox"/>	✓			
Ladder		<input type="checkbox"/>	✓			

Chip Lot #

Reagent Kit Lot #

Chip Comments :

Assay Class: High Sensitivity DNA Assay
Data Path: C:\...ents and Settings\Bioanalyzer\2012-12-12\2012-12-12_003.xad

Created: 12/12/2012 11:49:10 AM
Modified: 12/12/2012 12:30:31 PM

Electrophoresis Assay Details

General Analysis Settings

Number of Available Sample and Ladder Wells (Max.) : 12
Minimum Visible Range [s] : 32
Maximum Visible Range [s] : 138
Start Analysis Time Range [s] : 33
End Analysis Time Range [s] : 137.5
Ladder Concentration [pg/μl] : 1950
Uses Standard Area for Ladder Fragments
Lower Marker Concentration [pg/μl] : 125
Upper Marker Concentration [pg/μl] : 75
Used Upper Marker for Quantitation
Standard Curve Fit is Point to Point
Show Data Aligned to Lower and Upper Marker

Integrator Settings

Integration Start Time [s] : 33.05
Integration End Time [s] : 137
Slope Threshold : 0.8
Height Threshold [FU] : 5
Area Threshold : 0.1
Width Threshold [s] : 0.6
Baseline Plateau [s] : 0.5

Filter Settings

Filter Width [s] : 0.5
Polynomial Order : 4

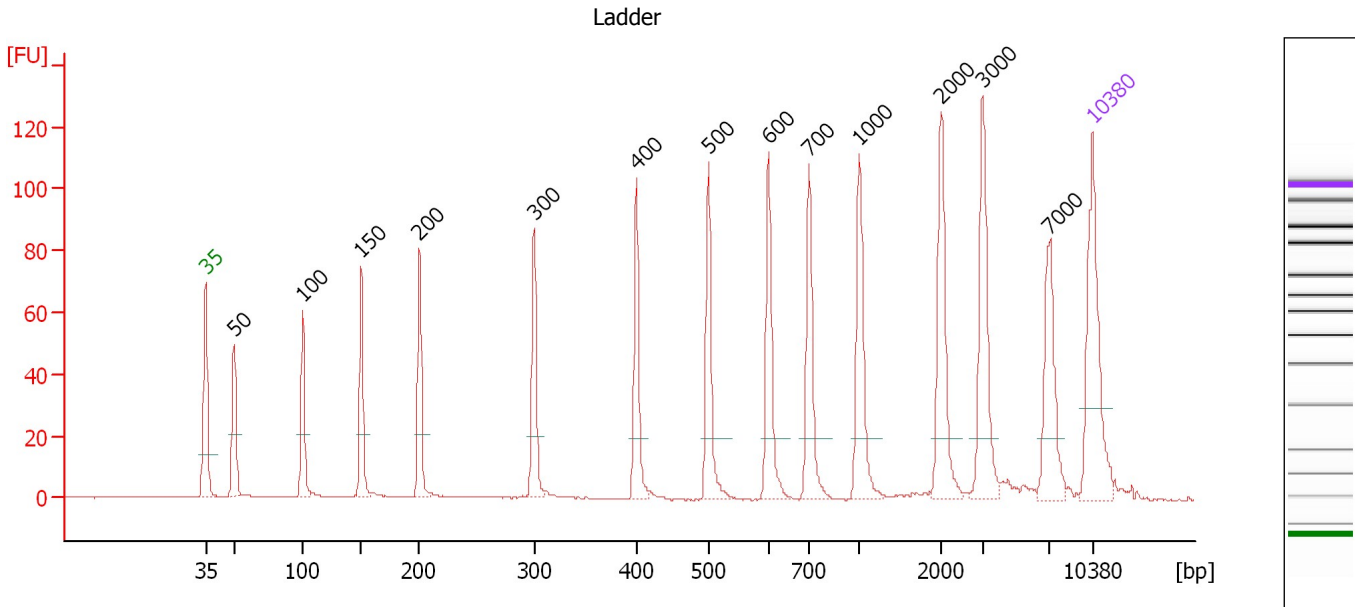
Ladder

Ladder Peak	Size	Area
1	35	160
2	50	210
3	100	208
4	150	221
5	200	242
6	300	270
7	400	305
8	500	306
9	600	336
10	700	321
11	1000	366
12	2000	413
13	3000	411
14	7000	400
15	10380	214

Assay Class: High Sensitivity DNA Assay
 Data Path: C:\...ents and Settings\Bioanalyzer\2012-12-12\2012-12-12_003.xad

Created: 12/12/2012 11:49:10 AM
 Modified: 12/12/2012 12:30:31 PM

Electropherogram Summary



Overall Results for Ladder

Noise: 0.2

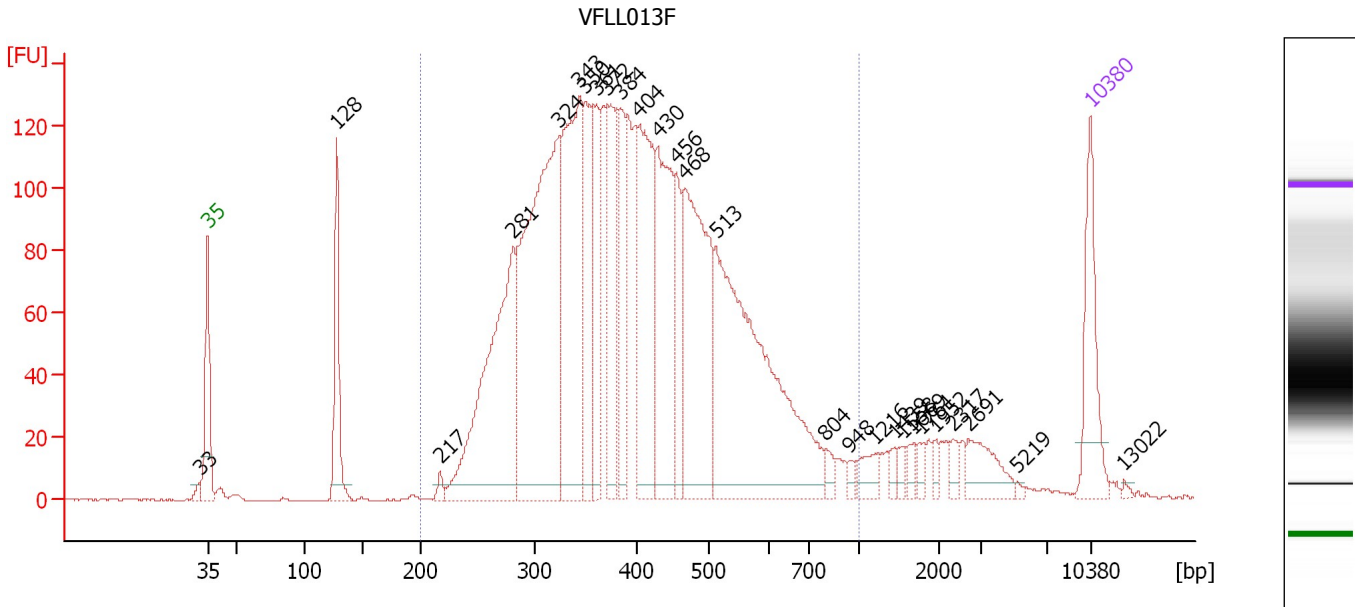
Peak table for Ladder

Peak	Size [bp]	Conc. [pg/μl]	Molarity [pmol/l]	Observations
1	35	125.00	5,411.3	Lower Marker
2	50	150.00	4,545.5	Ladder Peak
3	100	150.00	2,272.7	Ladder Peak
4	150	150.00	1,515.2	Ladder Peak
5	200	150.00	1,136.4	Ladder Peak
6	300	150.00	757.6	Ladder Peak
7	400	150.00	568.2	Ladder Peak
8	500	150.00	454.5	Ladder Peak
9	600	150.00	378.8	Ladder Peak
10	700	150.00	324.7	Ladder Peak
11	1,000	150.00	227.3	Ladder Peak
12	2,000	150.00	113.6	Ladder Peak
13	3,000	150.00	75.8	Ladder Peak
14	7,000	150.00	32.5	Ladder Peak
15	10,380	75.00	10.9	Upper Marker

Assay Class: High Sensitivity DNA Assay
 Data Path: C:\...ents and Settings\Bioanalyzer\2012-12-12\2012-12-12_003.xad

Created: 12/12/2012 11:49:10 AM
 Modified: 12/12/2012 12:30:31 PM

Electropherogram Summary Continued ...



Overall Results for sample 1 : VFLLO13F

Number of peaks found: 27 Corr. Area 1: 3,293.2
 Noise: 0.2

Peak table for sample 1 : VFLLO13F

Peak	Size [bp]	Conc. [pg/μl]	Molarity [pmol/l]	Observations
1	33	0.00	0.0	
2	35	125.00	5,411.3	Lower Marker
3	128	135.93	1,611.5	
4	217	9.64	67.2	
5	281	371.98	2,007.0	
6	324	541.53	2,532.0	
7	343	328.37	1,448.7	
8	350	143.40	621.3	
9	361	100.43	421.9	
10	372	157.98	644.0	
11	384	108.46	428.3	
12	404	213.94	801.6	
13	430	206.11	726.8	
14	456	81.94	272.4	
15	468	278.97	902.4	
16	513	470.00	1,388.3	
17	804	12.37	23.3	
18	948	7.02	11.2	
19	1,216	20.47	25.5	
20	1,439	8.74	9.2	
21	1,558	7.84	7.6	
22	1,669	10.26	9.3	
23	1,761	9.24	8.0	
24	1,952	7.48	5.8	
25	2,317	10.29	6.7	
26	2,691	37.94	21.4	

Assay Class: High Sensitivity DNA Assay
Data Path: C:\...ents and Settings\Bioanalyzer\2012-12-12\2012-12-12_003.xad

Created: 12/12/2012 11:49:10 AM
Modified: 12/12/2012 12:30:31 PM

Electropherogram Summary Continued ...**... Peak table for sample 1 : VFLLO13F**

Peak	Size [bp]	Conc. [pg/μl]	Molarity [pmol/l]	Observations
27	5,219	2.13	0.6	
28	10,380	75.00	10.9	Upper Marker
29	13,022	0.00	0.0	

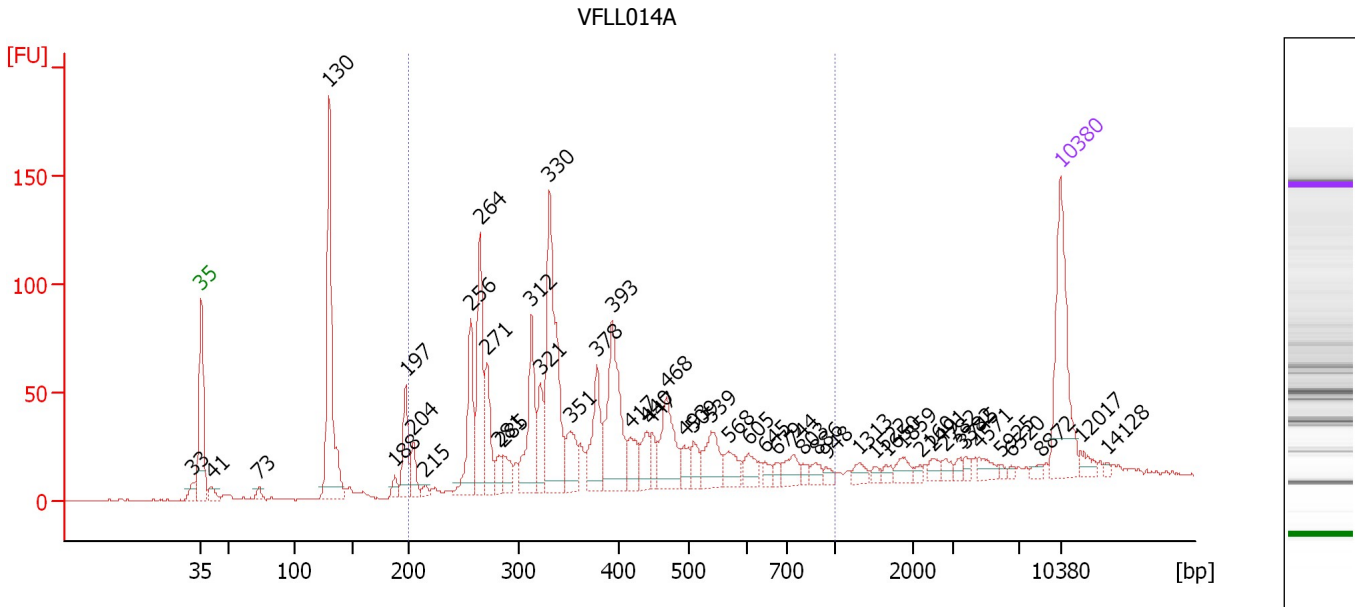
Region table for sample 1 : VFLLO13F

From [bp]	To [bp]	Average Size [bp]	Molarity [pmol/l]	Conc. [pg/μl]	Corr. Area	% of Total	Size distribution in CV [%]	Color
200	1,000	413	13,366.7	3,290.32	3,293.2	91	28.9	■

Assay Class: High Sensitivity DNA Assay
 Data Path: C:\...ents and Settings\Bioanalyzer\2012-12-12\2012-12-12_003.xad

Created: 12/12/2012 11:49:10 AM
 Modified: 12/12/2012 12:30:31 PM

Electropherogram Summary Continued ...



Overall Results for sample 2 : VFLLO14A

Number of peaks found: 49 Corr. Area 1: 1,176.5
 Noise: 0.4

Peak table for sample 2 : VFLLO14A

Peak	Size [bp]	Conc. [pg/μl]	Molarity [pmol/l]	Observations
1	33	0.00	0.0	
2	35	125.00	5,411.3	Lower Marker
3	41	11.76	439.5	
4	73	6.75	140.8	
5	130	204.29	2,383.1	
6	188	8.89	71.7	
7	197	43.73	335.6	
8	204	19.91	147.8	
9	215	5.17	36.4	
10	256	68.50	405.5	
11	264	96.22	552.0	
12	271	44.27	247.6	
13	281	13.65	73.5	
14	285	20.27	107.9	
15	312	74.22	360.5	
16	321	35.32	166.6	
17	330	157.67	723.4	
18	351	32.22	139.2	
19	378	52.01	208.4	
20	393	100.43	387.1	
21	417	24.37	88.6	
22	440	22.01	75.8	
23	447	14.13	47.9	
24	468	54.66	176.9	
25	493	13.90	42.7	
26	509	15.69	46.7	

Assay Class: High Sensitivity DNA Assay
 Data Path: C:\...ents and Settings\Bioanalyzer\2012-12-12\2012-12-12_003.xad


Created: 12/12/2012 11:49:10 AM
 Modified: 12/12/2012 12:30:31 PM

Electropherogram Summary Continued ...

... Peak table for sample 2 : VFLLO14A

Peak	Size [bp]	Conc. [pg/μl]	Molarity [pmol/l]	Observations
27	539	33.76	94.9	
28	568	18.88	50.4	
29	605	14.32	35.8	
30	645	6.96	16.4	
31	679	5.03	11.2	
32	744	15.93	32.4	
33	803	4.90	9.2	
34	886	7.68	13.1	
35	948	4.71	7.5	
36	1,313	7.85	9.1	
37	1,522	3.97	4.0	
38	1,650	4.46	4.1	
39	1,859	8.93	7.3	
40	2,160	3.14	2.2	
41	2,491	6.66	4.1	
42	2,782	5.32	2.9	
43	3,382	4.09	1.8	
44	3,745	4.39	1.8	
45	4,571	8.86	2.9	
46	5,925	2.26	0.6	
47	6,520	1.99	0.5	
48	8,872	3.56	0.6	
49	10,380	75.00	10.9	Upper Marker
50	12,017	0.00	0.0	
51	14,128	0.00	0.0	

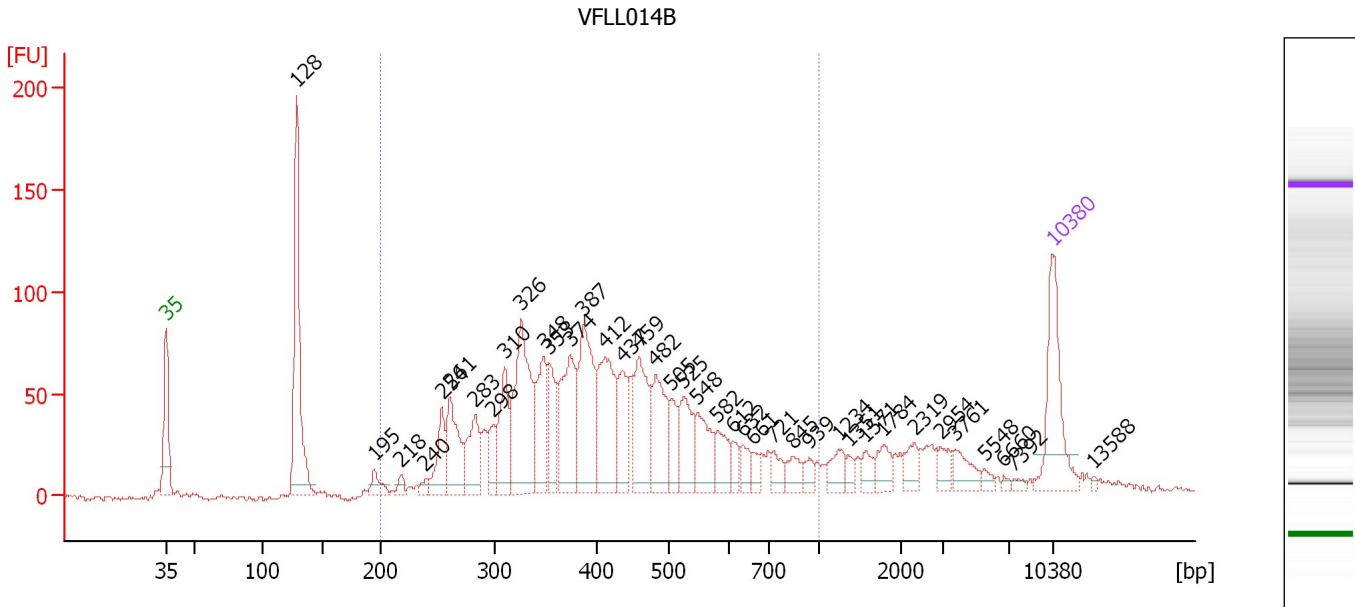
Region table for sample 2 : VFLLO14A

From [bp]	To [bp]	Average Size [bp]	Molarity [pmol/l]	Conc. [pg/μl]	Corr. Area	% of Total	Size distribution in CV [%]	Color
200	1,000	399	4,273.9	981.55	1,176.5	74	34.9	

Assay Class: High Sensitivity DNA Assay
 Data Path: C:\...ents and Settings\Bioanalyzer\2012-12-12\2012-12-12_003.xad

Created: 12/12/2012 11:49:10 AM
 Modified: 12/12/2012 12:30:31 PM

Electropherogram Summary Continued ...



Overall Results for sample 3 : VFLLO14B

Number of peaks found: 39 Corr. Area 1: 1,782.8
 Noise: 1.2

Peak table for sample 3 : VFLLO14B

Peak	Size [bp]	Conc. [pg/μl]	Molarity [pmol/l]	Observations
1	35	125.00	5,411.3	Lower Marker
2	128	229.03	2,704.0	
3	195	19.06	148.3	
4	218	9.14	63.6	
5	240	8.30	52.5	
6	254	47.45	283.1	
7	261	78.11	452.8	
8	283	61.98	331.3	
9	298	31.27	158.9	
10	310	70.22	343.3	
11	326	167.30	777.9	
12	348	75.67	329.1	
13	353	56.18	240.9	
14	374	109.32	442.7	
15	387	124.28	486.2	
16	412	111.84	411.7	
17	437	59.29	205.8	
18	459	87.82	289.8	
19	482	75.79	238.4	
20	505	34.93	104.8	
21	525	55.47	160.1	
22	548	51.53	142.4	
23	582	32.82	85.5	
24	612	14.33	35.5	
25	632	17.26	41.4	
26	661	12.22	28.0	

Assay Class: High Sensitivity DNA Assay
 Data Path: C:\...ents and Settings\Bioanalyzer\2012-12-12\2012-12-12_003.xad

Created: 12/12/2012 11:49:10 AM
 Modified: 12/12/2012 12:30:31 PM

Electropherogram Summary Continued ...

... Peak table for sample 3 : VFLLO14B

Peak	Size [bp]	Conc. [pg/μl]	Molarity [pmol/l]	Observations
27	721	16.61	34.9	
28	845	17.51	31.4	
29	939	11.18	18.0	
30	1,234	19.98	24.5	
31	1,351	8.56	9.6	
32	1,571	13.52	13.0	
33	1,784	19.13	16.2	
34	2,319	16.51	10.8	
35	2,954	15.07	7.7	
36	3,761	21.30	8.6	
37	5,548	5.49	1.5	
38	6,660	2.97	0.7	
39	7,392	3.79	0.8	
40	10,380	75.00	10.9	Upper Marker
41	13,588	0.00	0.0	

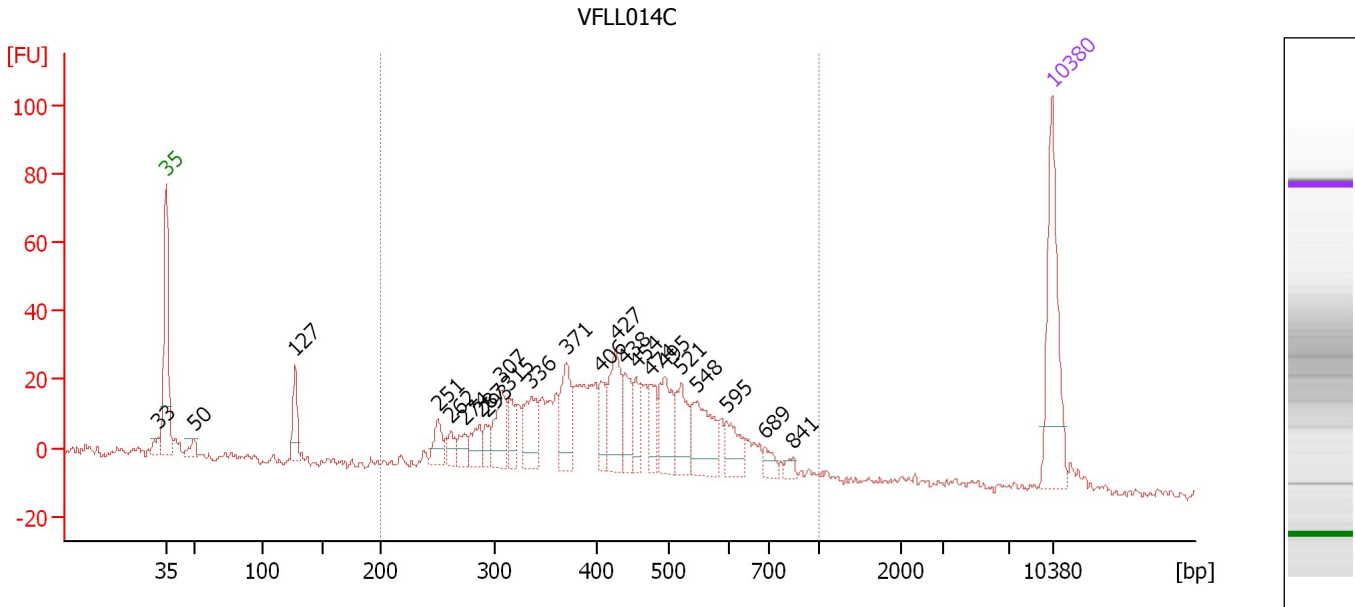
Region table for sample 3 : VFLLO14B

From [bp]	To [bp]	Average Size [bp]	Molarity [pmol/l]	Conc. [pg/μl]	Corr. Area	% of Total	Size distribution in CV [%]	Color
200	1,000	433	6,075.6	1,529.55	1,782.8	77	32.5	■

Assay Class: High Sensitivity DNA Assay
 Data Path: C:\...ents and Settings\Bioanalyzer\2012-12-12\2012-12-12_003.xad

Created: 12/12/2012 11:49:10 AM
 Modified: 12/12/2012 12:30:31 PM

Electropherogram Summary Continued ...



Overall Results for sample 4 : VFLLO14C

Number of peaks found: 23 Corr. Area 1: 704.2
 Noise: 1.4

Peak table for sample 4 : VFLLO14C

Peak	Size [bp]	Conc. [pg/μl]	Molarity [pmol/l]	Observations
1	33	0.00	0.0	
2	35	125.00	5,411.3	Lower Marker
3	50	11.51	352.0	
4	127	34.04	406.3	
5	251	21.84	131.9	
6	262	12.74	73.7	
7	274	15.67	86.6	
8	287	22.50	118.7	
9	293	13.31	68.9	
10	307	38.93	192.1	
11	315	20.36	98.0	
12	336	42.36	191.0	
13	371	47.54	194.3	
14	406	23.84	89.0	
15	427	55.44	196.9	
16	438	30.27	104.6	
17	454	23.69	79.0	
18	474	23.65	75.6	
19	495	45.55	139.5	
20	521	35.56	103.4	
21	548	52.63	145.5	
22	595	25.70	65.4	
23	689	10.17	22.4	
24	841	5.61	10.1	
25	10,380	75.00	10.9	Upper Marker

Assay Class: High Sensitivity DNA Assay
Data Path: C:\...ents and Settings\Bioanalyzer\2012-12-12\2012-12-12_003.xad

Created: 12/12/2012 11:49:10 AM
Modified: 12/12/2012 12:30:31 PM

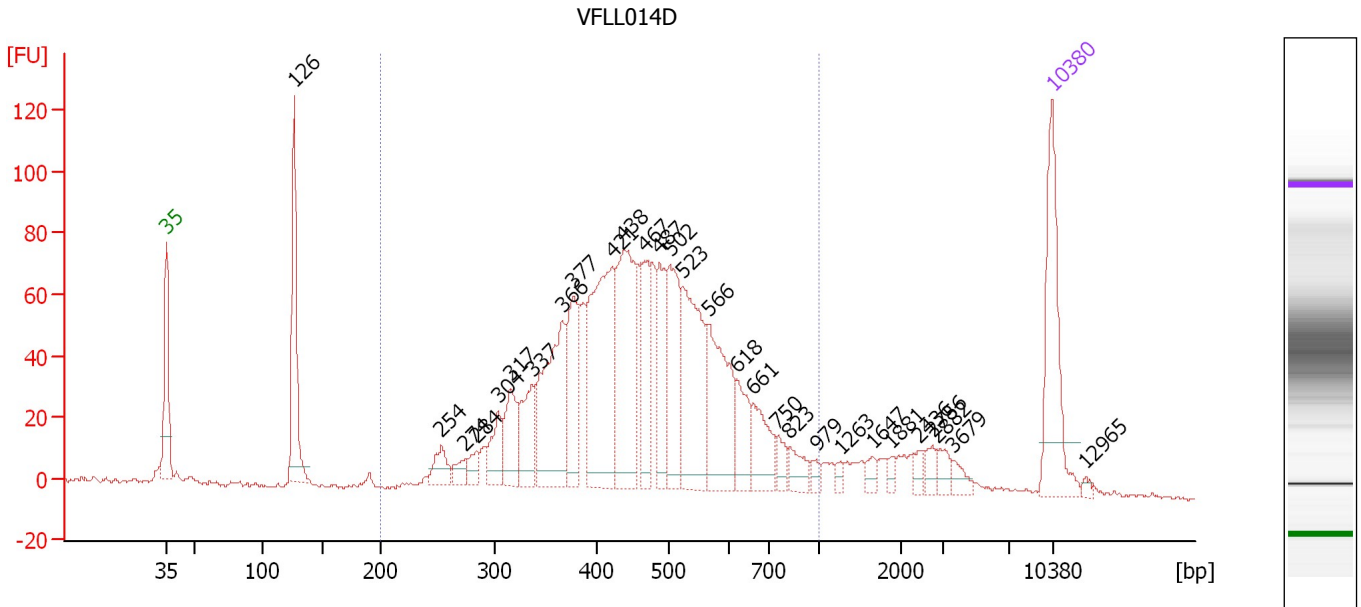
Electropherogram Summary Continued ...**... Region table for sample 4 : VFLL014C**

From [bp]	To [bp]	Average Size [bp]	Molarity [pmol/l]	Conc. [pg/μl]	Corr. Area	% of Total	Size distribution in CV [%]	Co lor
200	1,000	439	2,991.3	780.56	704.2	90	27.5	■

Assay Class: High Sensitivity DNA Assay
 Data Path: C:\...ents and Settings\Bioanalyzer\2012-12-12\2012-12-12_003.xad

Created: 12/12/2012 11:49:10 AM
 Modified: 12/12/2012 12:30:31 PM

Electropherogram Summary Continued ...



Overall Results for sample 5 : VFLLO14D

Number of peaks found: 29 Corr. Area 1: 1,605.9
 Noise: 0.5

Peak table for sample 5 : VFLLO14D

Peak	Size [bp]	Conc. [pg/μl]	Molarity [pmol/l]	Observations
1	35	125.00	5,411.3	Lower Marker
2	126	124.98	1,497.4	
3	254	22.90	136.8	
4	274	12.95	71.6	
5	284	13.43	71.6	
6	304	30.66	153.0	
7	317	45.61	218.3	
8	337	50.92	229.0	
9	366	124.41	515.3	
10	377	73.20	294.1	
11	421	168.08	604.3	
12	438	141.31	489.4	
13	467	57.25	185.9	
14	487	58.48	182.1	
15	502	82.74	249.6	
16	523	118.14	341.9	
17	566	96.70	258.9	
18	618	35.47	87.0	
19	661	39.21	89.9	
20	750	12.30	24.8	
21	823	16.49	30.3	
22	979	5.28	8.2	
23	1,263	4.45	5.3	
24	1,647	6.79	6.2	
25	1,881	4.46	3.6	
26	2,436	5.83	3.6	

Assay Class: High Sensitivity DNA Assay
 Data Path: C:\...ents and Settings\Bioanalyzer\2012-12-12\2012-12-12_003.xad


Created: 12/12/2012 11:49:10 AM
 Modified: 12/12/2012 12:30:31 PM

Electropherogram Summary Continued ...

... Peak table for sample 5 : VFLLO14D

Peak	Size [bp]	Conc. [pg/μl]	Molarity [pmol/l]	Observations
27	2,756	8.28	4.5	
28	2,882	9.62	5.1	
29	3,679	8.18	3.4	
30	10,380	75.00	10.9	Upper Marker
31	12,965	0.00	0.0	

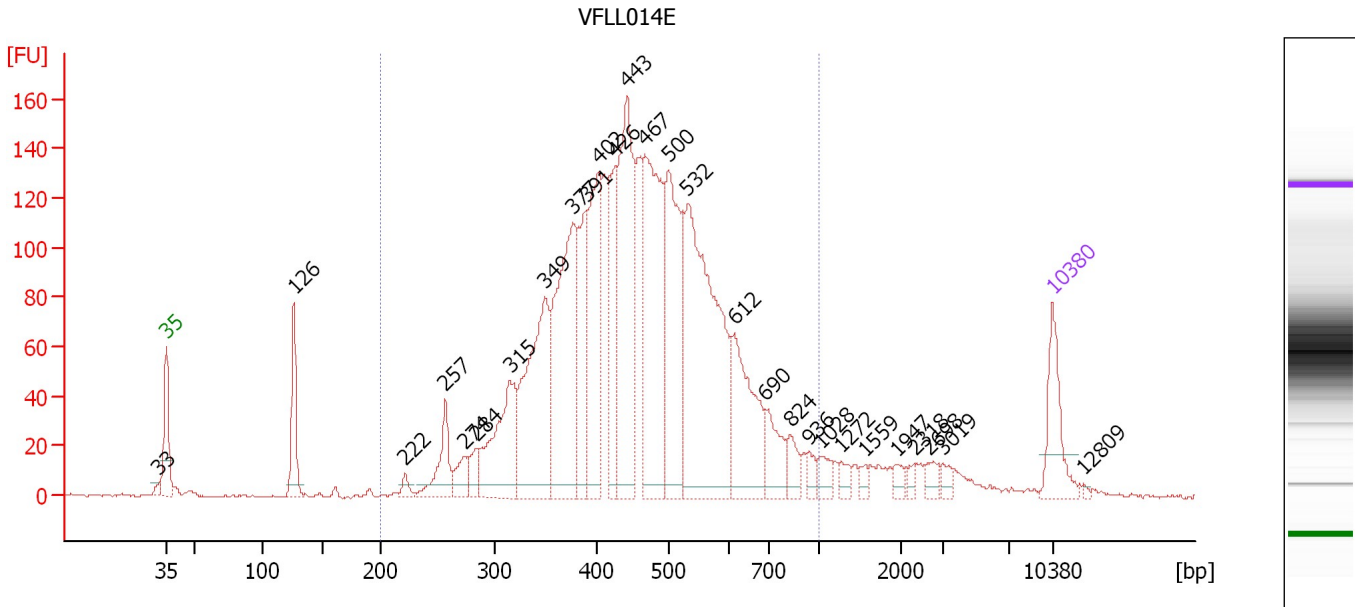
Region table for sample 5 : VFLLO14D

From [bp]	To [bp]	Average Size [bp]	Molarity [pmol/l]	Conc. [pg/μl]	Corr. Area	% of Total	Size distribution in CV [%]	Color
200	1,000	471	4,692.3	1,331.18	1,605.9	85	26.4	

Assay Class: High Sensitivity DNA Assay
 Data Path: C:\...ents and Settings\Bioanalyzer\2012-12-12\2012-12-12_003.xad

Created: 12/12/2012 11:49:10 AM
 Modified: 12/12/2012 12:30:31 PM

Electropherogram Summary Continued ...



Overall Results for sample 6 : VFLLO14E

Number of peaks found: 28 Corr. Area 1: 2,877.6
 Noise: 0.5

Peak table for sample 6 : VFLLO14E

Peak	Size [bp]	Conc. [pg/μl]	Molarity [pmol/l]	Observations
1	33	0.00	0.0	
2	35	125.00	5,411.3	Lower Marker
3	126	122.55	1,472.4	
4	222	16.27	111.1	
5	257	86.39	509.0	
6	274	41.02	226.8	
7	284	35.98	192.1	
8	315	207.87	999.9	
9	349	323.64	1,403.8	
10	377	381.25	1,533.2	
11	391	171.29	664.6	
12	402	247.59	933.3	
13	426	138.93	494.7	
14	443	371.09	1,270.2	
15	467	384.09	1,246.0	
16	500	300.82	912.3	
17	532	544.92	1,553.2	
18	612	185.71	459.4	
19	690	68.80	151.0	
20	824	32.82	60.3	
21	936	17.95	29.1	
22	1,028	23.28	34.3	
23	1,272	16.14	19.2	
24	1,559	10.47	10.2	
25	1,947	14.12	11.0	
26	2,318	9.67	6.3	

Assay Class: High Sensitivity DNA Assay
 Data Path: C:\...ents and Settings\Bioanalyzer\2012-12-12\2012-12-12_003.xad

Created: 12/12/2012 11:49:10 AM
 Modified: 12/12/2012 12:30:31 PM

Electropherogram Summary Continued ...

... Peak table for sample 6 : VFLLO14E

Peak	Size [bp]	Conc. [pg/μl]	Molarity [pmol/l]	Observations
27	2,698	16.73	9.4	
28	3,019	11.27	5.7	
29	10,380	75.00	10.9	Upper Marker
30	12,809	0.00	0.0	

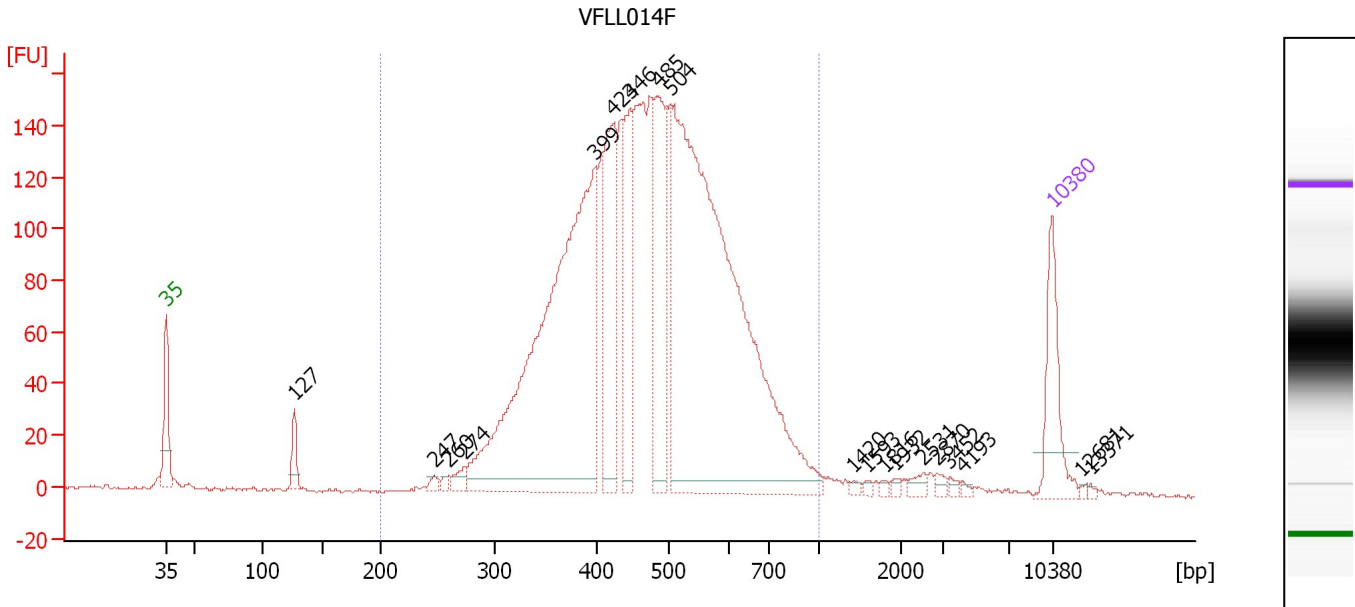
Region table for sample 6 : VFLLO14E

From [bp]	To [bp]	Average Size [bp]	Molarity [pmol/l]	Conc. [pg/μl]	Corr. Area	% of Total	Size distribution in CV [%]	Color
200	1,000	466	13,632.3	3,835.13	2,877.6	91	26.1	

Assay Class: High Sensitivity DNA Assay
 Data Path: C:\...ents and Settings\Bioanalyzer\2012-12-12\2012-12-12_003.xad

Created: 12/12/2012 11:49:10 AM
 Modified: 12/12/2012 12:30:31 PM

Electropherogram Summary Continued ...



Overall Results for sample 7 : VFLLO14F

Number of peaks found: 19 Corr. Area 1: 3,030.3
 Noise: 0.6

Peak table for sample 7 : VFLLO14F

Peak	Size [bp]	Conc. [pg/μl]	Molarity [pmol/l]	Observations
1	35	125.00	5,411.3	Lower Marker
2	127	32.30	386.7	
3	247	7.92	48.5	
4	260	6.59	38.4	
5	274	16.30	90.1	
6	399	822.27	3,122.2	
7	423	203.98	730.4	
8	446	140.44	477.1	
9	485	194.14	606.2	
10	504	1,067.50	3,210.5	
11	1,420	4.05	4.3	
12	1,593	3.36	3.2	
13	1,816	3.31	2.8	
14	1,932	3.85	3.0	
15	2,531	8.86	5.3	
16	2,870	6.49	3.4	
17	3,452	4.08	1.8	
18	4,193	2.86	1.0	
19	10,380	75.00	10.9	Upper Marker
20	12,681	0.00	0.0	
21	13,371	0.00	0.0	

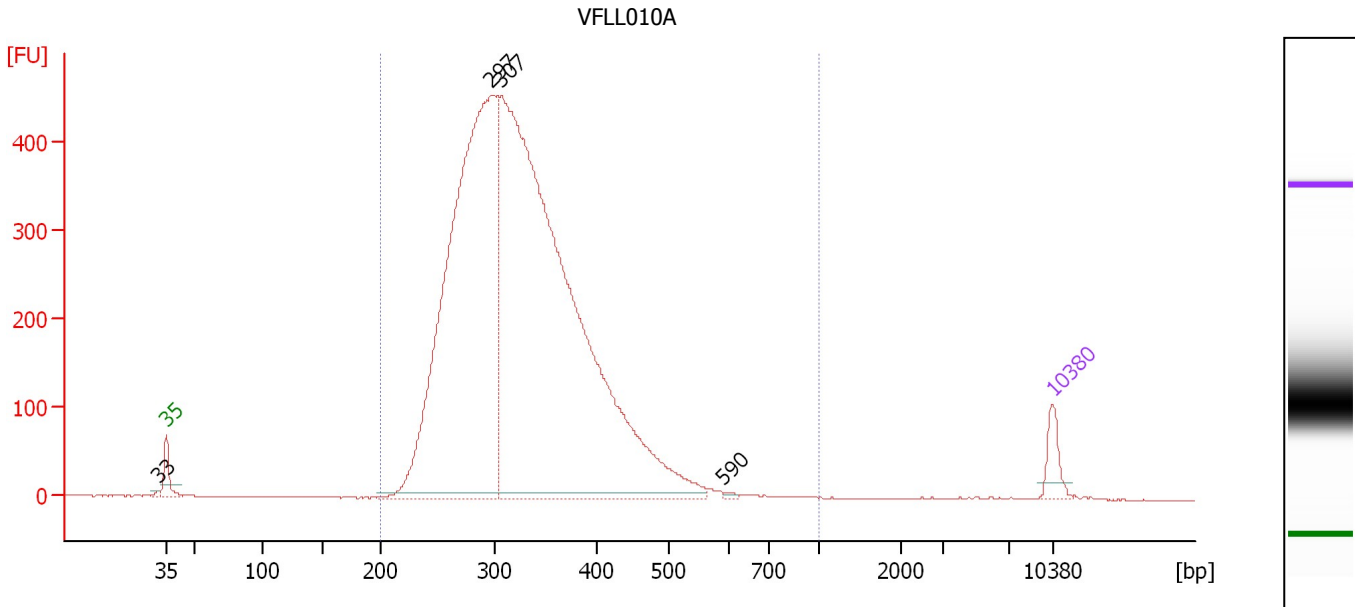
Region table for sample 7 : VFLLO14F

From [bp]	To [bp]	Average Size [bp]	Molarity [pmol/l]	Conc. [pg/μl]	Corr. Area	% of Total	Size distribution in CV [%]	Color
200	1,000	479	10,229.1	3,001.26	3,030.3	95	23.8	Blue

Assay Class: High Sensitivity DNA Assay
 Data Path: C:\...ents and Settings\Bioanalyzer\2012-12-12\2012-12-12_003.xad

Created: 12/12/2012 11:49:10 AM
 Modified: 12/12/2012 12:30:31 PM

Electropherogram Summary Continued ...



Overall Results for sample 8 : VFL010A

Number of peaks found: 4 Corr. Area 1: 7,334.3
 Noise: 0.4

Peak table for sample 8 : VFL010A

Peak	Size [bp]	Conc. [pg/μl]	Molarity [pmol/l]	Observations
1	33	0.00	0.0	
2	35	125.00	5,411.3	Lower Marker
3	297	3,529.10	18,020.6	
4	307	5,048.20	24,938.1	
5	590	8.04	20.6	
6	10,380	75.00	10.9	Upper Marker

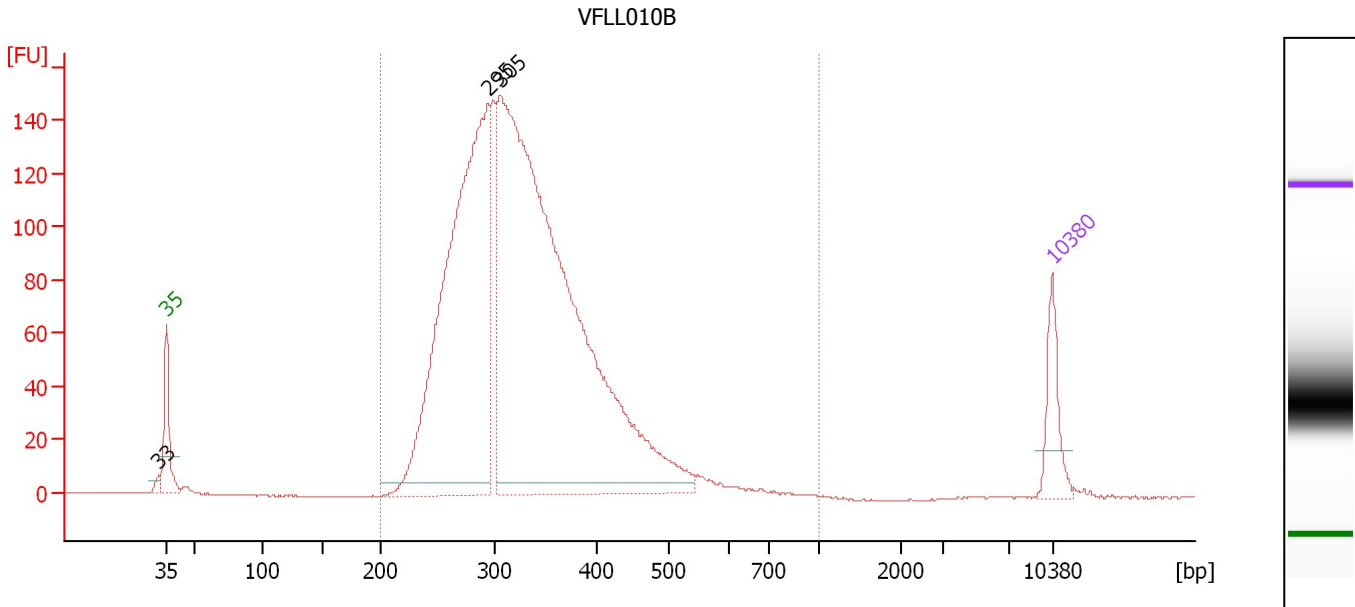
Region table for sample 8 : VFL010A

From [bp]	To [bp]	Average Size [bp]	Molarity [pmol/l]	Conc. [pg/μl]	Corr. Area	% of Total	Size distribution in CV [%]	Color
200	1,000	329	39,489.7	8,214.23	7,334.3	100	19.6	Blue

Assay Class: High Sensitivity DNA Assay
 Data Path: C:\...ents and Settings\Bioanalyzer\2012-12-12\2012-12-12_003.xad

Created: 12/12/2012 11:49:10 AM
 Modified: 12/12/2012 12:30:31 PM

Electropherogram Summary Continued ...



Overall Results for sample 9 : VFL010B

Number of peaks found: 3 Corr. Area 1: 2,400.4
 Noise: 0.2

Peak table for sample 9 : VFL010B

Peak	Size [bp]	Conc. [pg/μl]	Molarity [pmol/l]	Observations
1	33	0.00	0.0	
2	35	125.00	5,411.3	Lower Marker
3	295	1,311.38	6,733.4	
4	305	2,241.11	11,115.3	
5	10,380	75.00	10.9	Upper Marker

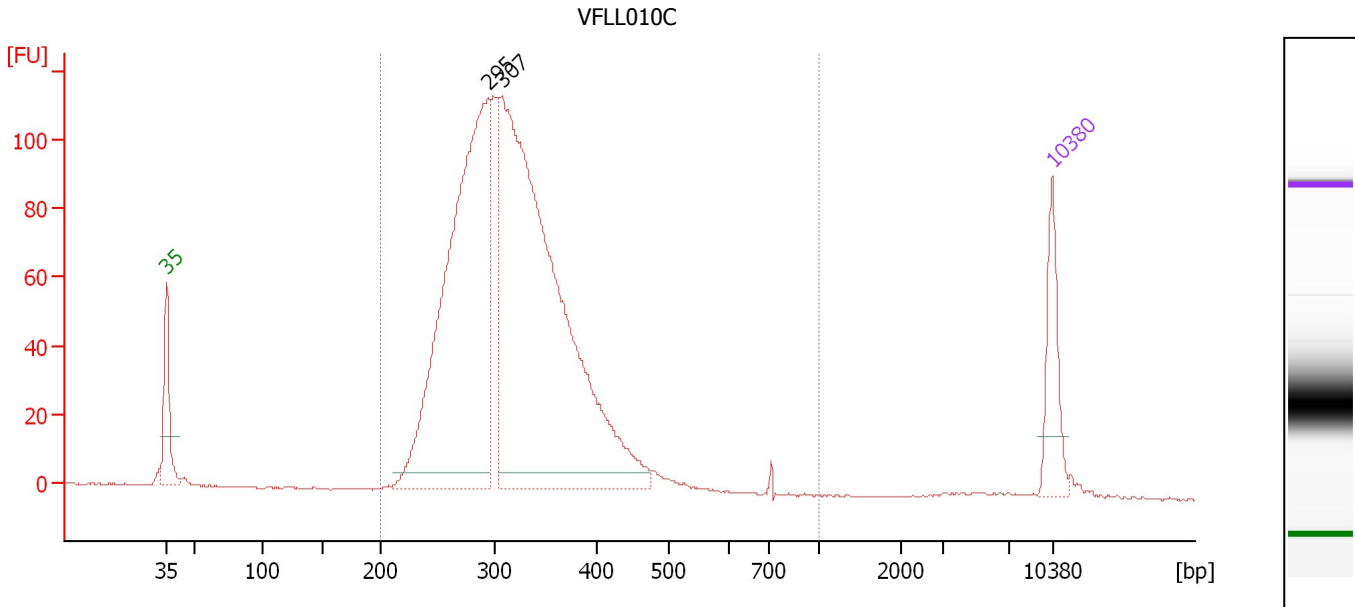
Region table for sample 9 : VFL010B

From [bp]	To [bp]	Average Size [bp]	Molarity [pmol/l]	Conc. [pg/μl]	Corr. Area	% of Total	Size distribution in CV [%]	Color
200	1,000	332	17,225.6	3,593.09	2,400.4	99	20.9	Blue

Assay Class: High Sensitivity DNA Assay
 Data Path: C:\...ents and Settings\Bioanalyzer\2012-12-12\2012-12-12_003.xad

Created: 12/12/2012 11:49:10 AM
 Modified: 12/12/2012 12:30:31 PM

Electropherogram Summary Continued ...



Overall Results for sample 10 : VFL010C

Number of peaks found: 2 Corr. Area 1: 1,658.0
 Noise: 0.2

Peak table for sample 10 : VFL010C

Peak	Size [bp]	Conc. [pg/μl]	Molarity [pmol/l]	Observations
1	35	125.00	5,411.3	Lower Marker
2	295	930.65	4,779.3	
3	307	1,278.95	6,307.1	
4	10,380	75.00	10.9	Upper Marker

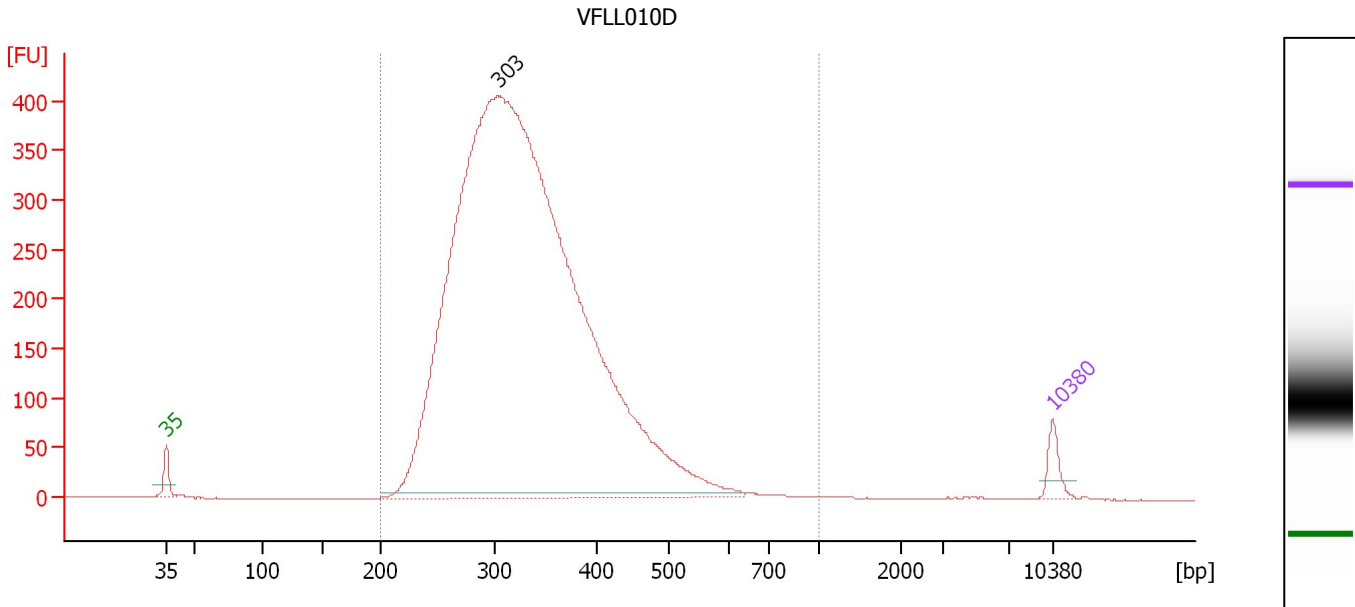
Region table for sample 10 : VFL010C

From [bp]	To [bp]	Average Size [bp]	Molarity [pmol/l]	Conc. [pg/μl]	Corr. Area	% of Total	Size distribution in CV [%]	Color
200	1,000	319	11,481.4	2,338.89	1,658.0	99	17.1	Blue

Assay Class: High Sensitivity DNA Assay
 Data Path: C:\...ents and Settings\Bioanalyzer\2012-12-12\2012-12-12_003.xad

Created: 12/12/2012 11:49:10 AM
 Modified: 12/12/2012 12:30:31 PM

Electropherogram Summary Continued ...



Overall Results for sample 11 : VFL010D

Number of peaks found: 1 Corr. Area 1: 6,708.8
 Noise: 0.2

Peak table for sample 11 : VFL010D

Peak	Size [bp]	Conc. [pg/μl]	Molarity [pmol/l]	Observations
1	35	125.00	5,411.3	Lower Marker
2	303	11,169.40	55,809.3	
3	10,380	75.00	10.9	Upper Marker

Region table for sample 11 : VFL010D

From [bp]	To [bp]	Average Size [bp]	Molarity [pmol/l]	Conc. [pg/μl]	Corr. Area	% of Total	Size distribution in CV [%]	Color
200	1,000	336	50,994.2	10,745.81	6,708.8	99	21.8	Blue

Assay Class: High Sensitivity DNA Assay
Data Path: C:\...ents and Settings\Bioanalyzer\2012-12-12\2012-12-12_003.xad

Created: 12/12/2012 11:49:10 AM
Modified: 12/12/2012 12:30:31 PM

Gel Image

