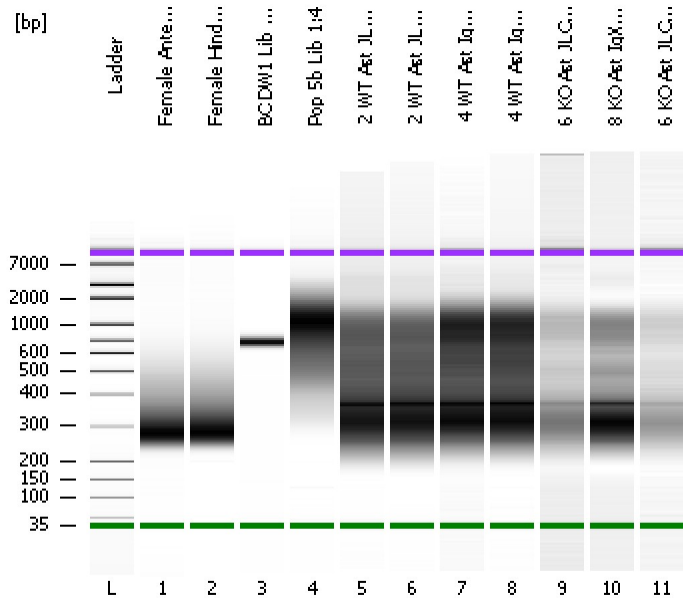


Assay Class: High Sensitivity DNA Assay
Data Path: C:\...ents and Settings\Bioanalyzer\2012-12-12\2012-12-12_004.xad

Created: 12/12/2012 5:17:17 PM
Modified: 12/12/2012 6:00:44 PM

Electrophoresis File Run Summary



Instrument Information:

Instrument Name: DE13701086 Firmware: C.01.069
Serial#: DE13701086 Type: G2938B

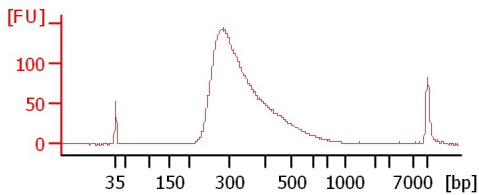
Assay Information:

Assay Origin Path: C:\Program Files\Agilent\2100 bioanalyzer\2100 expert\assays\dsDNA\High Sensitivity DNA.xsy
Assay Class: High Sensitivity DNA Assay
Version: 1.03
Assay Comments: Copyright © 2003-2010 Agilent Technologies

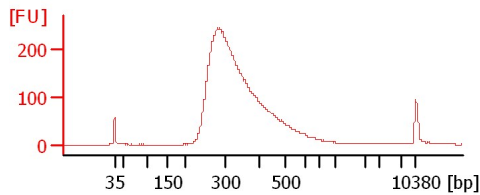
Chip Information:

Chip Lot #:
Reagent Kit Lot #:
Chip Comments:

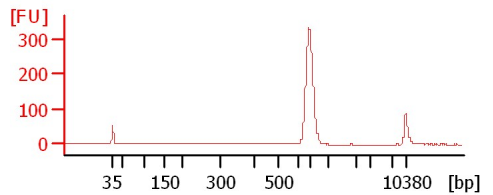
Female Antennae mRNA Lib 1:2



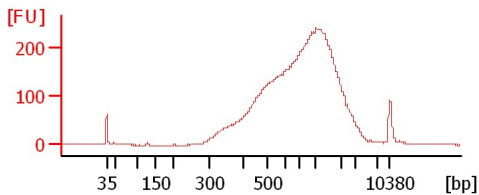
Female Hind Leg mRNA Lib 1:2



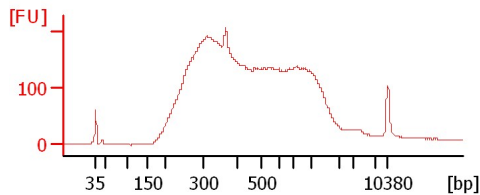
BC DW1 Lib 1:9



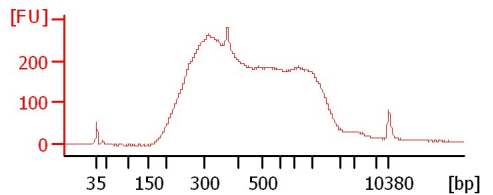
Pop 5b Lib 1:4



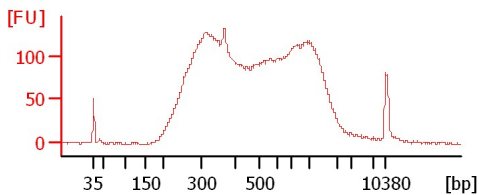
2 WT Ast JLC ChIP-Seq 1:4



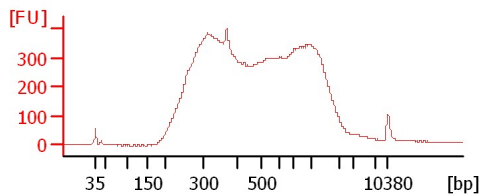
2 WT Ast JLC ChIP-Seq 1:2



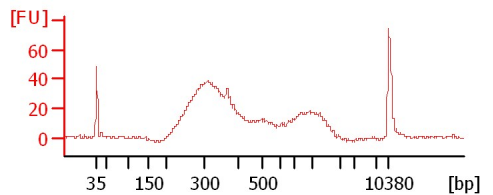
4 WT Ast IgX ChIP-Seq 1:3



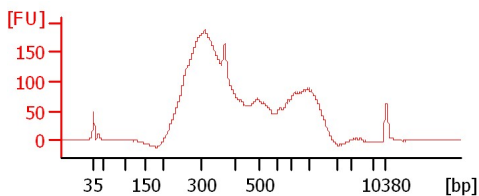
4 WT Ast IgX ChIP-Seq 1:4



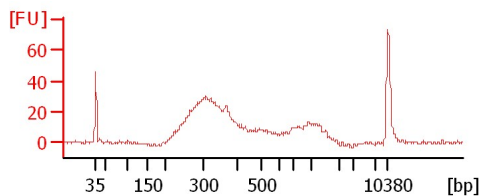
6 KO Ast JLC ChIP-Seq 1:5



8 KO Ast IgX ChIP-Seq 1:5



6 KO Ast JLC ChIP-Seq 1:7



Assay Class: High Sensitivity DNA Assay
 Data Path: C:\...ents and Settings\Bioanalyzer\2012-12-12\2012-12-12_004.xad

Created: 12/12/2012 5:17:17 PM
 Modified: 12/12/2012 6:00:44 PM

Electrophoresis File Run Summary (Chip Summary)

Sample Name	Sample Comment	Rest. Digest	Status	Observation	Result Label	Result Color
Female Antennae mRNA Lib 1:2		<input type="checkbox"/>	✓			
Female Hind Leg mRNA Lib 1:2		<input type="checkbox"/>	✓			
BC DW1 Lib 1:9		<input type="checkbox"/>	✓			
Pop 5b Lib 1:4		<input type="checkbox"/>	✓			
2 WT Ast JLC ChIP-Seq 1:4		<input type="checkbox"/>	✓			
2 WT Ast JLC ChIP-Seq 1:2		<input type="checkbox"/>	✓			
4 WT Ast IgX ChIP-Seq 1:3		<input type="checkbox"/>	✓			
4 WT Ast IgX ChIP-Seq 1:4		<input type="checkbox"/>	✓			
6 KO Ast JLC ChIP-Seq 1:5		<input type="checkbox"/>	✓			
8 KO Ast IgX ChIP-Seq 1:5		<input type="checkbox"/>	✓			
6 KO Ast JLC ChIP-Seq 1:7		<input type="checkbox"/>	✓			
Ladder		<input type="checkbox"/>	✓			

Chip Lot #

Reagent Kit Lot #

Chip Comments :

Assay Class: High Sensitivity DNA Assay
Data Path: C:\...ents and Settings\Bioanalyzer\2012-12-12\2012-12-12_004.xad

Created: 12/12/2012 5:17:17 PM
Modified: 12/12/2012 6:00:44 PM

Electrophoresis Assay Details

General Analysis Settings

Number of Available Sample and Ladder Wells (Max.) : 12
Minimum Visible Range [s] : 32
Maximum Visible Range [s] : 138
Start Analysis Time Range [s] : 33
End Analysis Time Range [s] : 137.5
Ladder Concentration [pg/μl] : 1950
Uses Standard Area for Ladder Fragments
Lower Marker Concentration [pg/μl] : 125
Upper Marker Concentration [pg/μl] : 75
Used Upper Marker for Quantitation
Standard Curve Fit is Point to Point
Show Data Aligned to Lower and Upper Marker

Integrator Settings

Integration Start Time [s] : 33.05
Integration End Time [s] : 137
Slope Threshold : 0.8
Height Threshold [FU] : 5
Area Threshold : 0.1
Width Threshold [s] : 0.6
Baseline Plateau [s] : 0.5

Filter Settings

Filter Width [s] : 0.5
Polynomial Order : 4

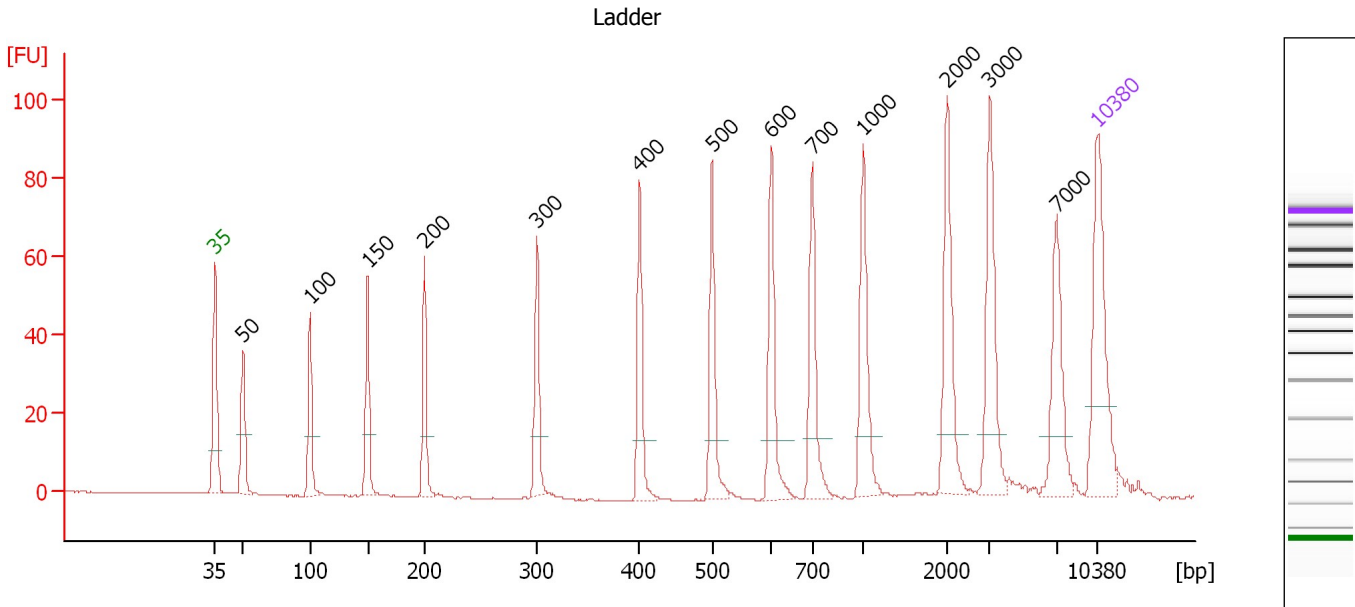
Ladder

Ladder Peak	Size	Area
1	35	160
2	50	210
3	100	208
4	150	221
5	200	242
6	300	270
7	400	305
8	500	306
9	600	336
10	700	321
11	1000	366
12	2000	413
13	3000	411
14	7000	400
15	10380	214

Assay Class: High Sensitivity DNA Assay
 Data Path: C:\...ents and Settings\Bioanalyzer\2012-12-12\2012-12-12_004.xad

Created: 12/12/2012 5:17:17 PM
 Modified: 12/12/2012 6:00:44 PM

Electropherogram Summary



Overall Results for Ladder

Noise: 0.1

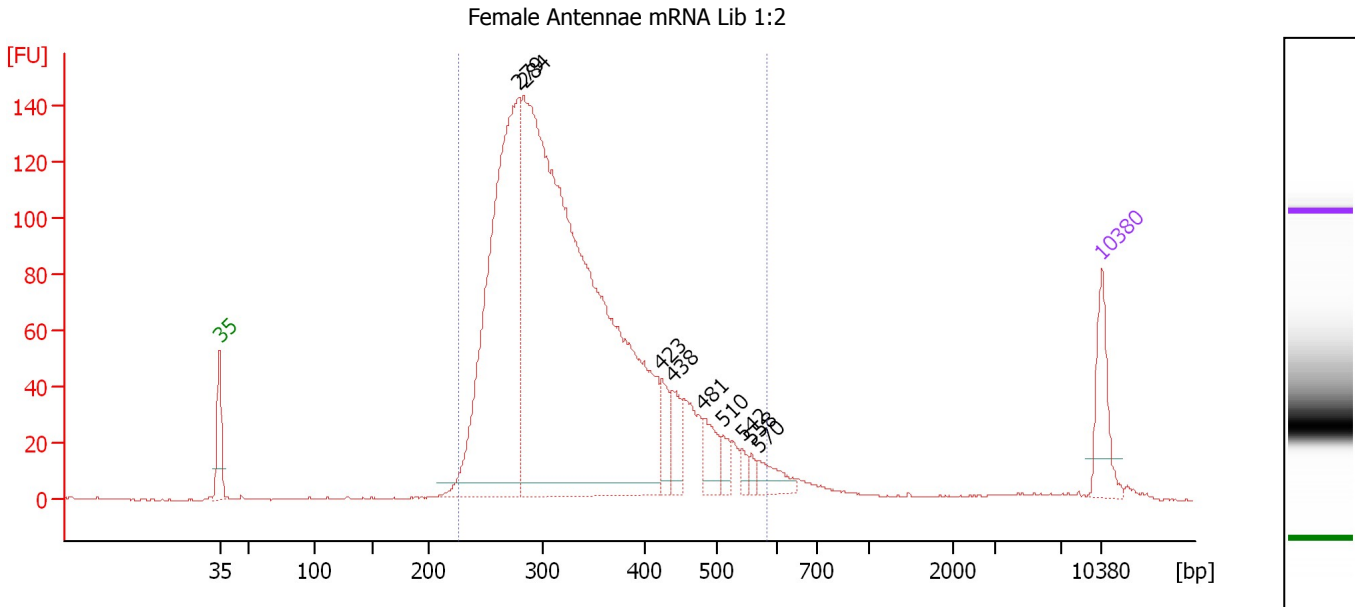
Peak table for Ladder

Peak	Size [bp]	Conc. [pg/μl]	Molarity [pmol/l]	Observations
1	35	125.00	5,411.3	Lower Marker
2	50	150.00	4,545.5	Ladder Peak
3	100	150.00	2,272.7	Ladder Peak
4	150	150.00	1,515.2	Ladder Peak
5	200	150.00	1,136.4	Ladder Peak
6	300	150.00	757.6	Ladder Peak
7	400	150.00	568.2	Ladder Peak
8	500	150.00	454.5	Ladder Peak
9	600	150.00	378.8	Ladder Peak
10	700	150.00	324.7	Ladder Peak
11	1,000	150.00	227.3	Ladder Peak
12	2,000	150.00	113.6	Ladder Peak
13	3,000	150.00	75.8	Ladder Peak
14	7,000	150.00	32.5	Ladder Peak
15	10,380	75.00	10.9	Upper Marker

Assay Class: High Sensitivity DNA Assay
 Data Path: C:\...ents and Settings\Bioanalyzer\2012-12-12\2012-12-12_004.xad

Created: 12/12/2012 5:17:17 PM
 Modified: 12/12/2012 6:00:44 PM

Electropherogram Summary Continued ...



Overall Results for sample 1 : Female Antennae mRNA Lib 1:2

Number of peaks found: 9 Corr. Area 1: 2,356.3
 Noise: 0.2

Peak table for sample 1 : Female Antennae mRNA Lib 1:2

Peak	Size [bp]	Conc. [pg/μl]	Molarity [pmol/l]	Observations
1	35	125.00	5,411.3	Lower Marker
2	279	1,062.87	5,762.5	
3	284	2,333.03	12,438.2	
4	423	59.05	211.4	
5	438	61.97	214.4	
6	481	59.77	188.2	
7	510	27.77	82.5	
8	542	13.49	37.7	
9	558	12.63	34.3	
10	570	41.42	110.1	
11	10,380	75.00	10.9	Upper Marker

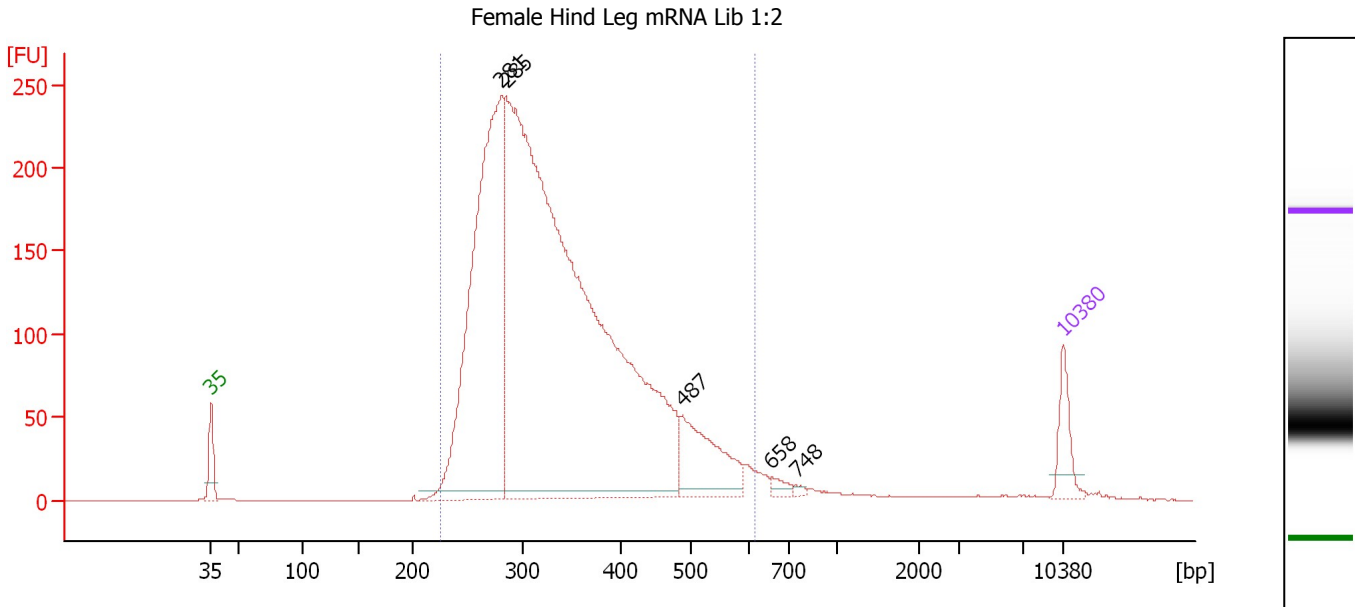
Region table for sample 1 : Female Antennae mRNA Lib 1:2

From [bp]	To [bp]	Average Size [bp]	Molarity [pmol/l]	Conc. [pg/μl]	Corr. Area	% of Total	Size distribution in CV [%]	Color
227	583	336	17,276.7	3,606.48	2,356.3	96	22.2	Blue

Assay Class: High Sensitivity DNA Assay
 Data Path: C:\...ents and Settings\Bioanalyzer\2012-12-12\2012-12-12_004.xad

Created: 12/12/2012 5:17:17 PM
 Modified: 12/12/2012 6:00:44 PM

Electropherogram Summary Continued ...



Overall Results for sample 2 : Female Hind Leg mRNA Lib 1:2

Number of peaks found: 5 Corr. Area 1: 4,081.1
 Noise: 0.2

Peak table for sample 2 : Female Hind Leg mRNA Lib 1:2

Peak	Size [bp]	Conc. [pg/μl]	Molarity [pmol/l]	Observations
1	35	125.00	5,411.3	Lower Marker
2	281	1,602.17	8,631.0	
3	285	4,191.04	22,266.6	
4	487	276.30	859.3	
5	658	22.87	52.7	
6	748	8.14	16.5	
7	10,380	75.00	10.9	Upper Marker

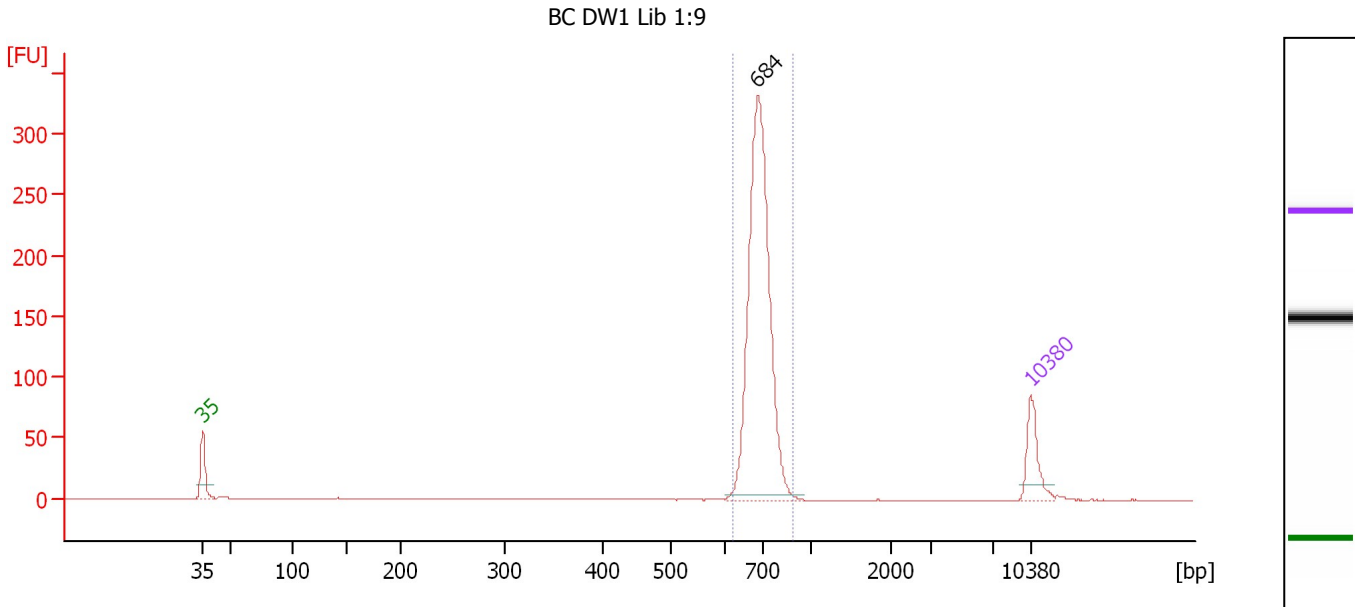
Region table for sample 2 : Female Hind Leg mRNA Lib 1:2

From [bp]	To [bp]	Average Size [bp]	Molarity [pmol/l]	Conc. [pg/μl]	Corr. Area	% of Total	Size distribution in CV [%]	Color
224	615	341	26,819.5	5,670.32	4,081.1	97	23.0	Blue

Assay Class: High Sensitivity DNA Assay
 Data Path: C:\...ents and Settings\Bioanalyzer\2012-12-12\2012-12-12_004.xad

Created: 12/12/2012 5:17:17 PM
 Modified: 12/12/2012 6:00:44 PM

Electropherogram Summary Continued ...



Overall Results for sample 3 : BC DW1 Lib 1:9

Number of peaks found: 1 Corr. Area 1: 767.8
 Noise: 0.2

Peak table for sample 3 : BC DW1 Lib 1:9

Peak	Size [bp]	Conc. [pg/μl]	Molarity [pmol/l]	Observations
1	35	125.00	5,411.3	Lower Marker
2	684	932.10	2,066.0	
3	10,380	75.00	10.9	Upper Marker

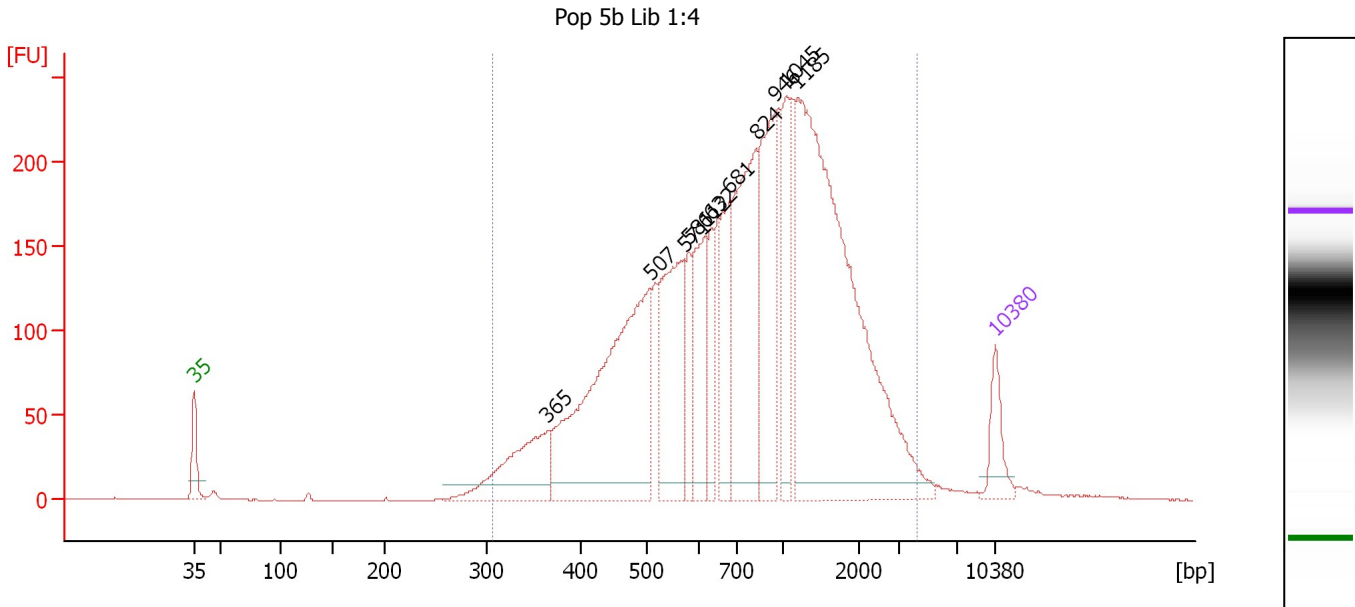
Region table for sample 3 : BC DW1 Lib 1:9

From [bp]	To [bp]	Average Size [bp]	Molarity [pmol/l]	Conc. [pg/μl]	Corr. Area	% of Total	Size distribution in CV [%]	Color
619	881	696	2,002.0	917.96	767.8	97	5.7	Blue

Assay Class: High Sensitivity DNA Assay
 Data Path: C:\...ents and Settings\Bioanalyzer\2012-12-12\2012-12-12_004.xad

Created: 12/12/2012 5:17:17 PM
 Modified: 12/12/2012 6:00:44 PM

Electropherogram Summary Continued ...



Setpoint Deviations for sample 4 : Pop 5b Lib 1:4

Height Threshold [FU] : 10

Overall Results for sample 4 : Pop 5b Lib 1:4

Number of peaks found: 11 Corr. Area 1: 5,023.2
 Noise: 0.2

Peak table for sample 4 : Pop 5b Lib 1:4

Peak	Size [bp]	Conc. [pg/μl]	Molarity [pmol/l]	Observations
1	35	125.00	5,411.3	Lower Marker
2	365	298.06	1,237.2	
3	507	978.30	2,922.2	
4	571	410.19	1,088.8	
5	581	109.14	284.7	
6	612	248.59	615.2	
7	632	117.19	280.8	
8	681	215.56	479.6	
9	824	510.50	938.4	
10	946	390.60	625.6	
11	1,045	190.56	276.2	
12	1,185	1,358.97	1,738.0	
13	10,380	75.00	10.9	Upper Marker

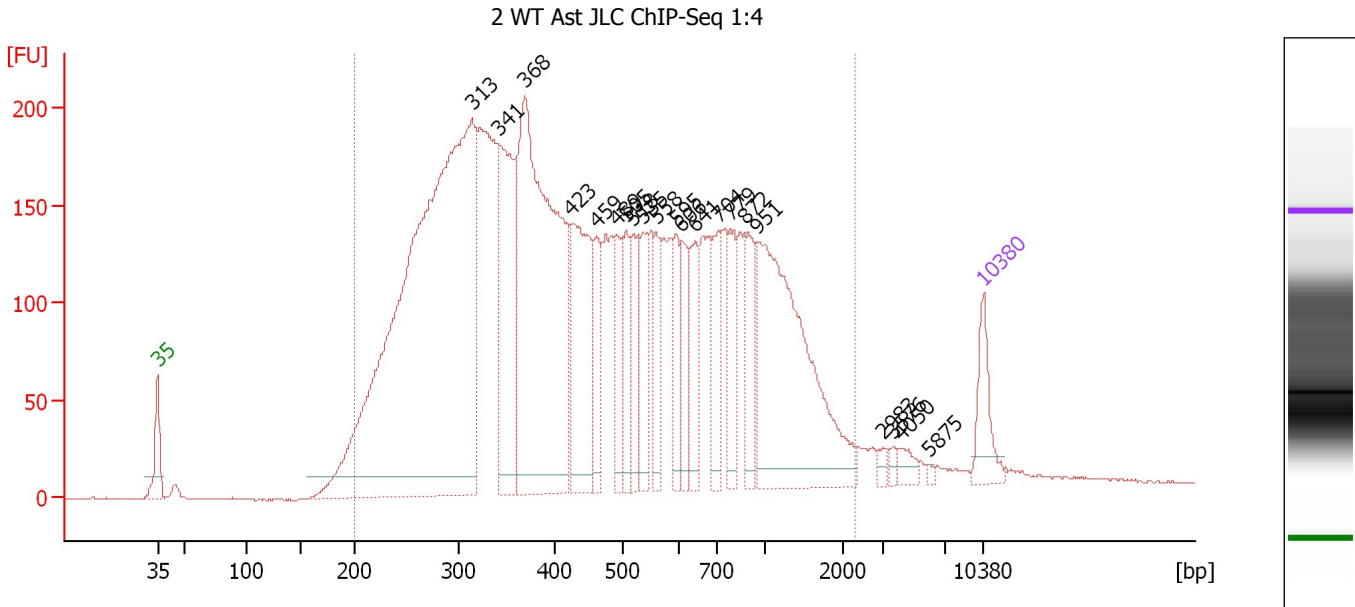
Region table for sample 4 : Pop 5b Lib 1:4

From [bp]	To [bp]	Average Size [bp]	Molarity [pmol/l]	Conc. [pg/μl]	Corr. Area	% of Total	Size distribution in CV [%]	Color
307	4,261	1,002	11,302.4	5,107.52	5,023.2	98	61.9	Blue

Assay Class: High Sensitivity DNA Assay
 Data Path: C:\...ents and Settings\Bioanalyzer\2012-12-12\2012-12-12_004.xad

Created: 12/12/2012 5:17:17 PM
 Modified: 12/12/2012 6:00:44 PM

Electropherogram Summary Continued ...



Setpoint Deviations for sample 5 : 2 WT Ast JLC ChIP-Seq 1:4

Height Threshold [FU] : 10

Overall Results for sample 5 : 2 WT Ast JLC ChIP-Seq 1:4

Number of peaks found: 21 Corr. Area 1: 6,902.9
 Noise: 0.3

Peak table for sample 5 : 2 WT Ast JLC ChIP-Seq 1:4

Peak	Size [bp]	Conc. [pg/μl]	Molarity [pmol/l]	Observations
1	35	125.00	5,411.3	Lower Marker
2	313	2,310.00	11,183.4	
3	341	435.04	1,935.8	
4	368	1,087.24	4,475.7	
5	423	347.76	1,246.0	
6	459	141.86	467.8	
7	489	115.46	358.0	
8	505	106.13	318.2	
9	518	127.83	374.2	
10	535	117.52	332.8	
11	558	97.44	264.4	
12	595	91.32	232.5	
13	606	95.21	238.0	
14	641	122.47	289.3	
15	704	127.95	275.4	
16	779	108.76	211.5	
17	872	120.67	209.7	
18	951	607.41	968.2	
19	2,983	12.56	6.4	
20	3,576	10.61	4.5	
21	4,050	22.03	8.2	
22	5,875	5.37	1.4	

Assay Class: High Sensitivity DNA Assay
Data Path: C:\...ents and Settings\Bioanalyzer\2012-12-12\2012-12-12_004.xad

Created: 12/12/2012 5:17:17 PM
Modified: 12/12/2012 6:00:44 PM

Electropherogram Summary Continued ...**... Peak table for sample 5 : 2 WT Ast JLC ChIP-Seq 1:4**

Peak	Size [bp]	Conc. [pg/ μ l]	Molarity [pmol/l]	Observations
23	10,380	75.00	10.9	Upper Marker

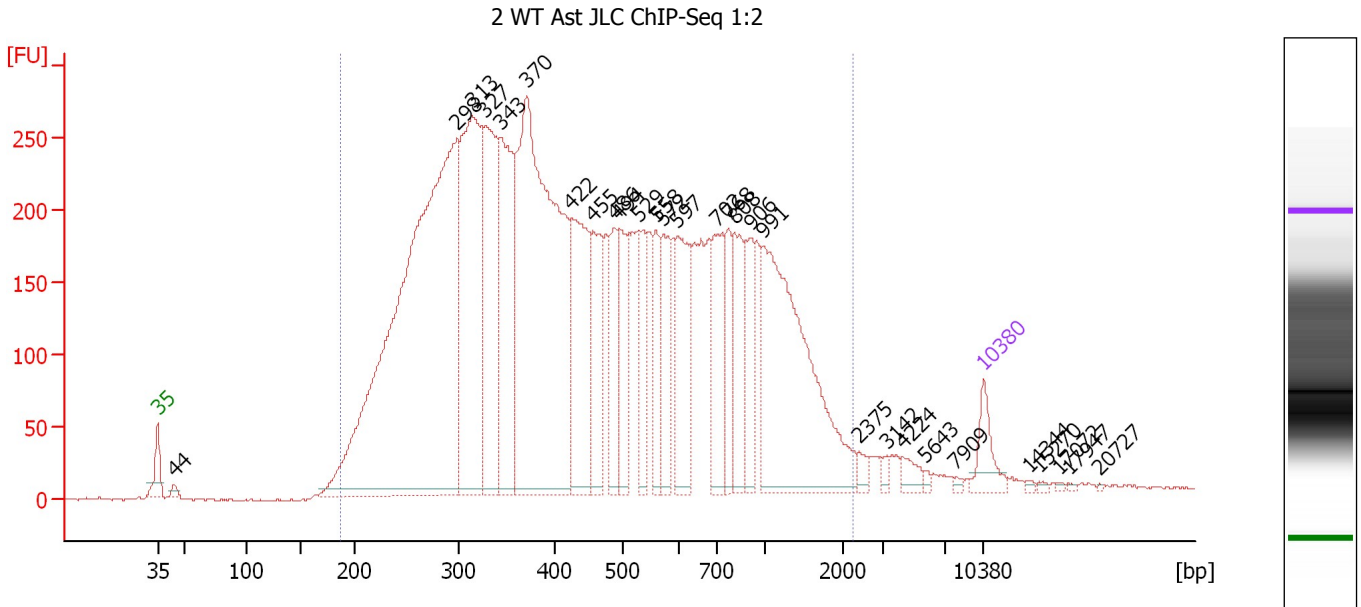
Region table for sample 5 : 2 WT Ast JLC ChIP-Seq 1:4

From [bp]	To [bp]	Average Size [bp]	Molarity [pmol/l]	Conc. [pg/ μ l]	Corr. Area	% of Total	Size distribution in CV [%]	Color
200	2,301	551	29,282.6	7,481.48	6,902.9	96	63.8	

Assay Class: High Sensitivity DNA Assay
 Data Path: C:\...ents and Settings\Bioanalyzer\2012-12-12\2012-12-12_004.xad

Created: 12/12/2012 5:17:17 PM
 Modified: 12/12/2012 6:00:44 PM

Electropherogram Summary Continued ...



Overall Results for sample 6 : 2 WT Ast JLC ChIP-Seq 1:2

Number of peaks found: 29 Corr. Area 1: 9,477.9
 Noise: 0.8

Peak table for sample 6 : 2 WT Ast JLC ChIP-Seq 1:2

Peak	Size [bp]	Conc. [pg/μl]	Molarity [pmol/l]	Observations
1	35	125.00	5,411.3	Lower Marker
2	44	20.54	704.4	
3	298	2,877.26	14,607.4	
4	313	961.17	4,648.4	
5	327	633.94	2,936.6	
6	343	564.25	2,494.8	
7	370	1,761.75	7,209.2	
8	422	520.94	1,868.3	
9	455	285.67	951.7	
10	486	201.26	627.0	
11	494	252.48	774.4	
12	529	164.82	472.0	
13	558	156.16	423.8	
14	572	209.31	554.6	
15	597	298.66	758.1	
16	702	260.23	561.8	
17	768	143.17	282.6	
18	808	232.61	436.3	
19	906	157.52	263.3	
20	991	858.98	1,313.9	
21	2,375	25.31	16.1	
22	3,142	13.89	6.7	
23	4,224	35.18	12.6	
24	5,643	8.53	2.3	
25	7,909	6.81	1.3	
26	10,380	75.00	10.9	Upper Marker

Assay Class: High Sensitivity DNA Assay
 Data Path: C:\...ents and Settings\Bioanalyzer\2012-12-12\2012-12-12_004.xad

Created: 12/12/2012 5:17:17 PM
 Modified: 12/12/2012 6:00:44 PM

Electropherogram Summary Continued ...

... Peak table for sample 6 : 2 WT Ast JLC ChIP-Seq 1:2

Peak	Size [bp]	Conc. [pg/μl]	Molarity [pmol/l]	Observations
27	14,344	0.00	0.0	
28	15,270	0.00	0.0	
29	17,072	0.00	0.0	
30	17,947	0.00	0.0	
31	20,727	0.00	0.0	

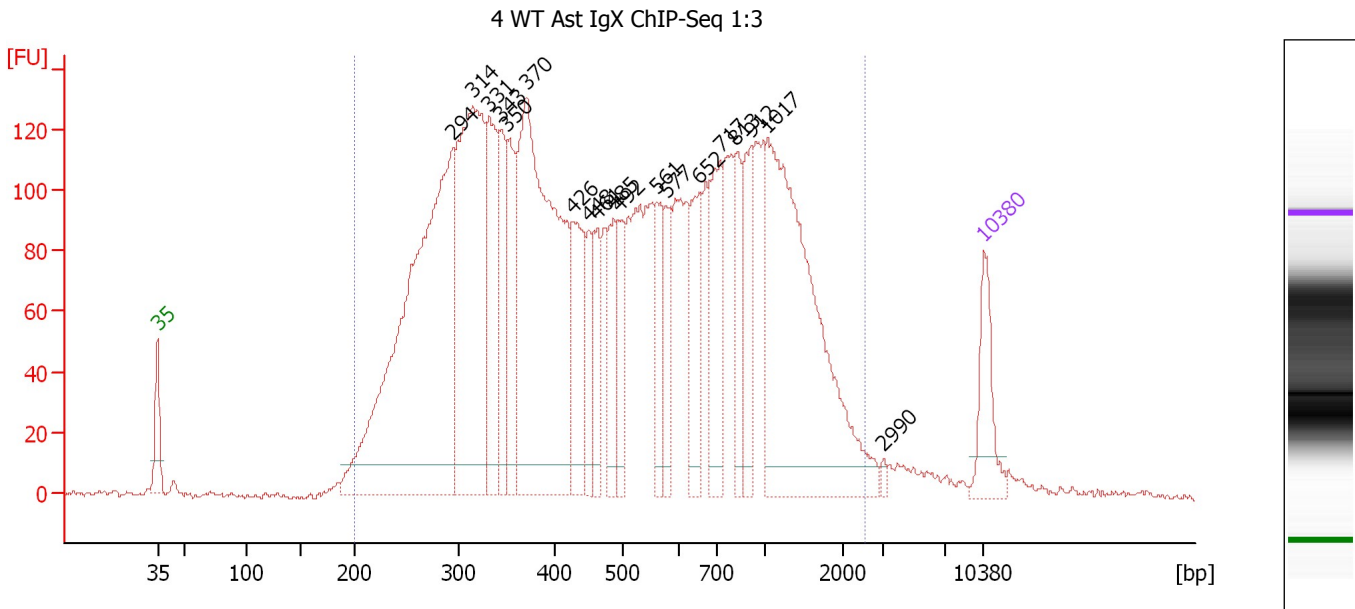
Region table for sample 6 : 2 WT Ast JLC ChIP-Seq 1:2

From [bp]	To [bp]	Average Size [bp]	Molarity [pmol/l]	Conc. [pg/μl]	Corr. Area	% of Total	Size distribution in CV [%]	Color
188	2,238	547	46,767.4	11,856.10	9,477.9	97	63.5	

Assay Class: High Sensitivity DNA Assay
 Data Path: C:\...ents and Settings\Bioanalyzer\2012-12-12\2012-12-12_004.xad

Created: 12/12/2012 5:17:17 PM
 Modified: 12/12/2012 6:00:44 PM

Electropherogram Summary Continued ...



Setpoint Deviations for sample 7 : 4 WT Ast IgX ChIP-Seq 1:3

Height Threshold [FU] : 10

Overall Results for sample 7 : 4 WT Ast IgX ChIP-Seq 1:3

Number of peaks found: 19 Corr. Area 1: 4,884.2
 Noise: 1.1


Peak table for sample 7 : 4 WT Ast IgX ChIP-Seq 1:3

Peak	Size [bp]	Conc. [pg/μl]	Molarity [pmol/l]	Observations
1	35	125.00	5,411.3	Lower Marker
2	294	1,061.27	5,465.3	
3	314	616.80	2,974.0	
4	331	218.60	1,002.0	
5	343	144.82	639.2	
6	350	157.64	682.6	
7	370	776.59	3,181.2	
8	426	179.12	637.2	
9	448	82.78	279.8	
10	461	82.23	270.2	
11	485	115.51	360.7	
12	492	83.77	258.0	
13	561	92.93	251.1	
14	577	78.00	204.7	
15	652	132.49	307.7	
16	717	162.66	343.7	
17	813	90.10	167.9	
18	912	116.93	194.2	
19	1,017	607.42	905.4	
20	2,990	6.18	3.1	
21	10,380	75.00	10.9	Upper Marker

Assay Class: High Sensitivity DNA Assay
Data Path: C:\...ents and Settings\Bioanalyzer\2012-12-12\2012-12-12_004.xad

Created: 12/12/2012 5:17:17 PM
Modified: 12/12/2012 6:00:44 PM

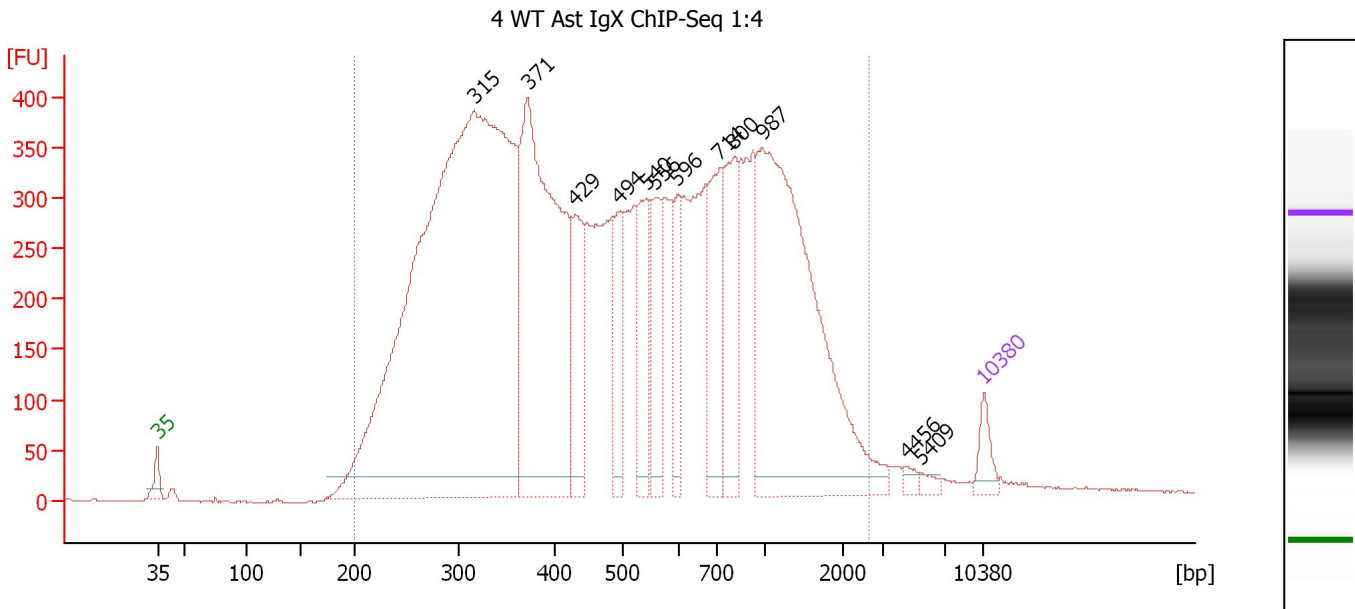
Electropherogram Summary Continued ...**... Region table for sample 7 : 4 WT Ast IgX ChIP-Seq 1:3**

From [bp]	To [bp]	Average Size [bp]	Molarity [pmol/l]	Conc. [pg/μl]	Corr. Area	% of Total	Size distribution in CV [%]	Co lor
200	2,532	622	20,990.8	5,735.82	4,884.2	97	66.2	

Assay Class: High Sensitivity DNA Assay
 Data Path: C:\...ents and Settings\Bioanalyzer\2012-12-12\2012-12-12_004.xad

Created: 12/12/2012 5:17:17 PM
 Modified: 12/12/2012 6:00:44 PM

Electropherogram Summary Continued ...



Setpoint Deviations for sample 8 : 4 WT Ast IgX ChIP-Seq 1:4

Height Threshold [FU] : 20

Overall Results for sample 8 : 4 WT Ast IgX ChIP-Seq 1:4

Number of peaks found: 12 Corr. Area 1: 14,723.1
 Noise: 1.0

Peak table for sample 8 : 4 WT Ast IgX ChIP-Seq 1:4

Peak	Size [bp]	Conc. [pg/μl]	Molarity [pmol/l]	Observations
1	35	125.00	5,411.3	Lower Marker
2	315	6,057.78	29,102.1	
3	371	2,123.65	8,669.8	
4	429	427.42	1,508.0	
5	494	306.01	939.0	
6	540	403.25	1,130.8	
7	556	311.44	848.3	
8	596	229.67	584.2	
9	714	472.80	1,002.9	
10	800	432.44	818.9	
11	987	1,900.78	2,918.4	
12	4,456	25.13	8.5	
13	5,409	25.56	7.2	
14	10,380	75.00	10.9	Upper Marker

Region table for sample 8 : 4 WT Ast IgX ChIP-Seq 1:4

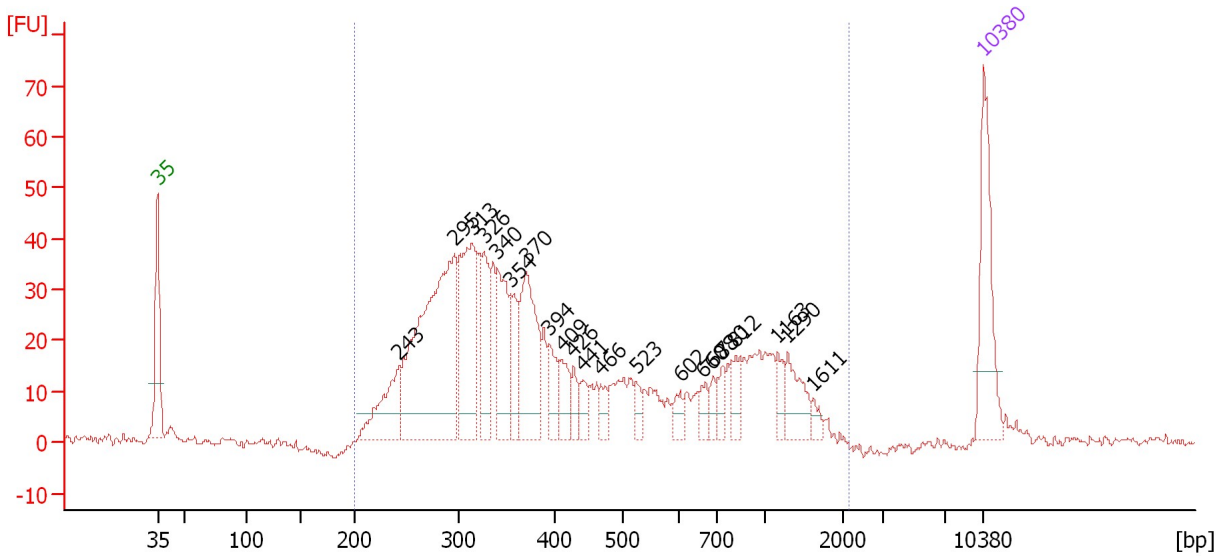
From [bp]	To [bp]	Average Size [bp]	Molarity [pmol/l]	Conc. [pg/μl]	Corr. Area	% of Total	Size distribution in CV [%]	Color
200	2,625	620	56,995.6	15,527.22	14,723.1	97	66.8	Blue

Assay Class: High Sensitivity DNA Assay
 Data Path: C:\...ents and Settings\Bioanalyzer\2012-12-12\2012-12-12_004.xad

Created: 12/12/2012 5:17:17 PM
 Modified: 12/12/2012 6:00:44 PM

Electropherogram Summary Continued ...

6 KO Ast JLC ChIP-Seq 1:5



Overall Results for sample 9 : 6 KO Ast JLC ChIP-Seq 1:5

Number of peaks found: 21 Corr. Area 1: 911.8
 Noise: 0.9

Peak table for sample 9 : 6 KO Ast JLC ChIP-Seq 1:5

Peak	Size [bp]	Conc. [pg/μl]	Molarity [pmol/l]	Observations
1	35	125.00	5,411.3	Lower Marker
2	243	73.89	461.2	
3	295	328.93	1,687.2	
4	313	146.14	706.7	
5	326	63.98	297.8	
6	340	82.82	369.5	
7	354	40.85	175.0	
8	370	113.17	463.9	
9	394	31.10	119.8	
10	409	29.48	109.2	
11	426	16.23	57.7	
12	441	17.36	59.6	
13	466	14.73	47.8	
14	523	12.53	36.3	
15	602	13.48	33.9	
16	660	15.05	34.5	
17	688	12.15	26.8	
18	730	15.07	31.3	
19	812	16.91	31.5	
20	1,163	14.71	19.2	
21	1,290	35.39	41.6	
22	1,611	7.57	7.1	
23	10,380	75.00	10.9	Upper Marker

Assay Class: High Sensitivity DNA Assay
Data Path: C:\...ents and Settings\Bioanalyzer\2012-12-12\2012-12-12_004.xad

Created: 12/12/2012 5:17:17 PM
Modified: 12/12/2012 6:00:44 PM

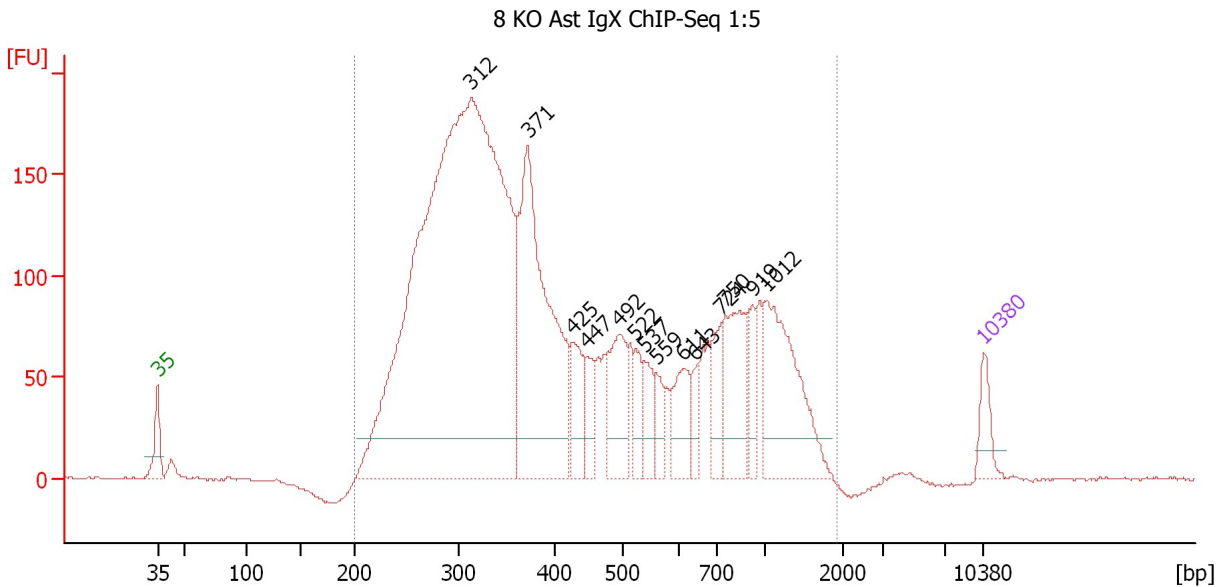
Electropherogram Summary Continued ...**... Region table for sample 9 : 6 KO Ast JLC ChIP-Seq 1:5**

From [bp]	To [bp]	Average Size [bp]	Molarity [pmol/l]	Conc. [pg/μl]	Corr. Area	% of Total	Size distribution in CV [%]	Color
200	2,130	509	6,131.5	1,475.06	911.8	97	64.7	■

Assay Class: High Sensitivity DNA Assay
 Data Path: C:\...ents and Settings\Bioanalyzer\2012-12-12\2012-12-12_004.xad

Created: 12/12/2012 5:17:17 PM
 Modified: 12/12/2012 6:00:44 PM

Electropherogram Summary Continued ...



Setpoint Deviations for sample 10 : 8 KO Ast IgX ChIP-Seq 1:5

Height Threshold [FU] : 20

Overall Results for sample 10 : 8 KO Ast IgX ChIP-Seq 1:5

Number of peaks found: 14 Corr. Area 1: 4,456.4
 Noise: 0.6

Peak table for sample 10 : 8 KO Ast IgX ChIP-Seq 1:5

Peak	Size [bp]	Conc. [pg/μl]	Molarity [pmol/l]	Observations
1	35	125.00	5,411.3	Lower Marker
2	312	4,815.93	23,401.2	
3	371	1,267.14	5,173.7	
4	425	182.77	652.1	
5	447	121.39	411.8	
6	492	281.13	865.5	
7	522	97.15	282.2	
8	537	122.40	345.6	
9	559	78.59	213.0	
10	611	181.71	450.9	
11	643	71.46	168.3	
12	724	122.59	256.7	
13	750	323.71	654.0	
14	919	96.93	159.8	
15	1,012	496.13	743.0	
16	10,380	75.00	10.9	Upper Marker

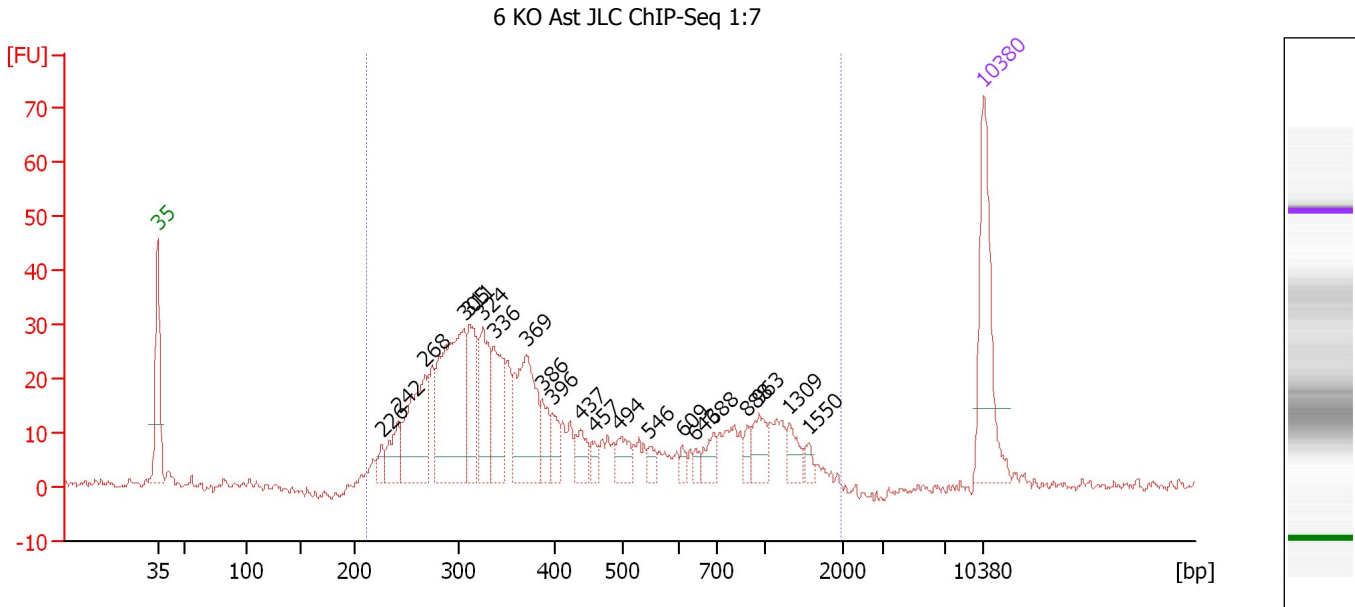
Region table for sample 10 : 8 KO Ast IgX ChIP-Seq 1:5

From [bp]	To [bp]	Average Size [bp]	Molarity [pmol/l]	Conc. [pg/μl]	Corr. Area	% of Total	Size distribution in CV [%]	Color
200	1,910	497	36,905.2	8,907.30	4,456.4	99	60.3	Blue

Assay Class: High Sensitivity DNA Assay
 Data Path: C:\...ents and Settings\Bioanalyzer\2012-12-12\2012-12-12_004.xad

Created: 12/12/2012 5:17:17 PM
 Modified: 12/12/2012 6:00:44 PM

Electropherogram Summary Continued ...



Overall Results for sample 11 : 6 KO Ast JLC ChIP-Seq 1:7

Number of peaks found: 21 Corr. Area 1: 627.3
 Noise: 0.7

Peak table for sample 11 : 6 KO Ast JLC ChIP-Seq 1:7

Peak	Size [bp]	Conc. [pg/μl]	Molarity [pmol/l]	Observations
1	35	125.00	5,411.3	Lower Marker
2	226	11.30	75.6	
3	242	32.27	202.4	
4	268	95.17	539.0	
5	305	162.48	808.3	
6	311	61.47	299.7	
7	324	62.28	291.0	
8	336	62.51	281.9	
9	369	100.05	410.5	
10	386	24.07	94.5	
11	396	18.03	68.9	
12	437	19.61	68.0	
13	457	9.50	31.5	
14	494	20.22	62.1	
15	546	9.08	25.2	
16	609	6.38	15.9	
17	643	5.92	14.0	
18	688	15.52	34.2	
19	888	9.27	15.8	
20	963	21.82	34.3	
21	1,309	14.70	17.0	
22	1,550	6.26	6.1	
23	10,380	75.00	10.9	Upper Marker

Assay Class: High Sensitivity DNA Assay
Data Path: C:\...ents and Settings\Bioanalyzer\2012-12-12\2012-12-12_004.xad

Created: 12/12/2012 5:17:17 PM
Modified: 12/12/2012 6:00:44 PM

Electropherogram Summary Continued ...

... Region table for sample 11 : 6 KO Ast JLC ChIP-Seq 1:7

From [bp]	To [bp]	Average Size [bp]	Molarity [pmol/l]	Conc. [pg/μl]	Corr. Area	% of Total	Size distribution in CV [%]	Color
212	1,971	488	4,193.9	991.45	627.3	99	63.7	■

Assay Class: High Sensitivity DNA Assay
Data Path: C:\...ents and Settings\Bioanalyzer\2012-12-12\2012-12-12_004.xad

Created: 12/12/2012 5:17:17 PM
Modified: 12/12/2012 6:00:44 PM

Gel Image

