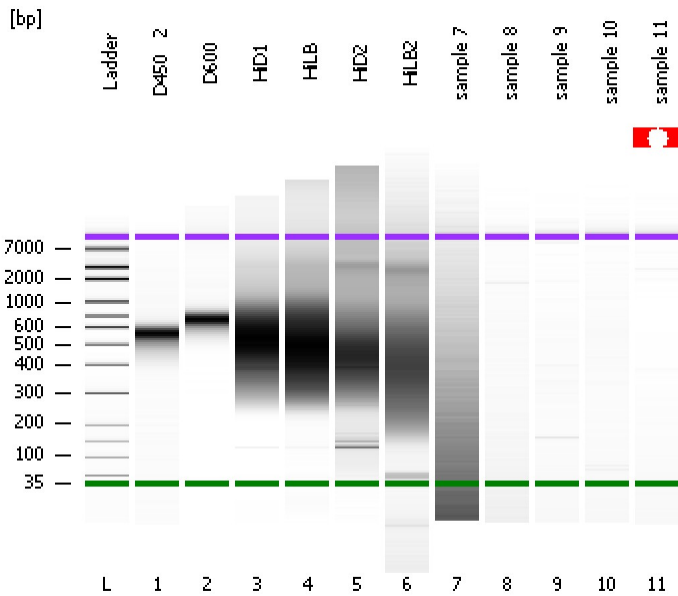


Assay Class: High Sensitivity DNA Assay
Data Path: C:\...s and Settings\Bioanalyzer\2012-12-13\2012-12-13_001 LF.xad

Created: 12/13/2012 9:20:56 AM
Modified: 12/13/2012 10:42:08 AM

Electrophoresis File Run Summary



Instrument Information:

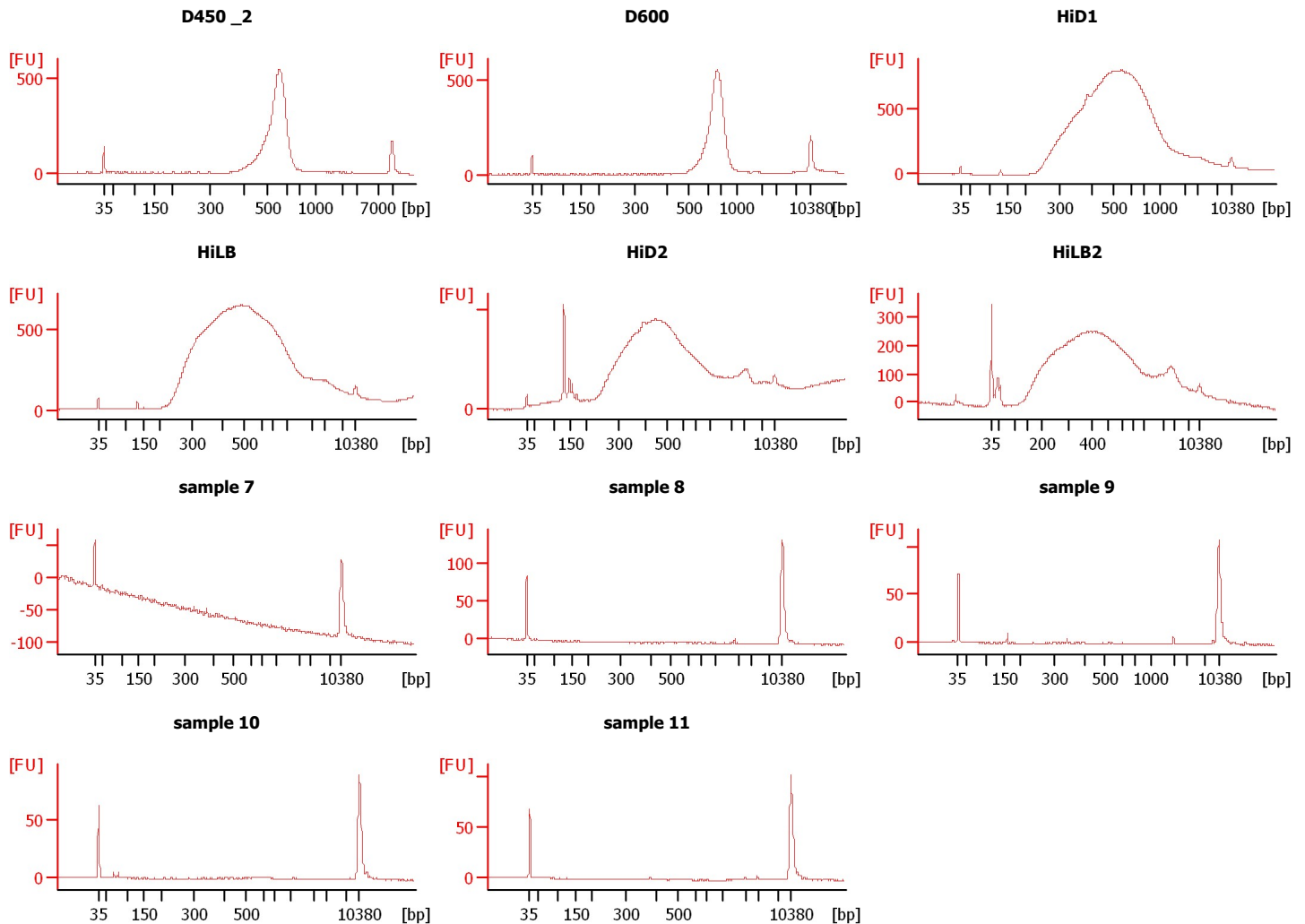
Instrument Name: DE13701086 Firmware: C.01.069
Serial#: DE13701086 Type: G2938B

Assay Information:

Assay Origin Path: C:\Program Files\Agilent\2100 bioanalyzer\2100 expert\assays\dsDNA\High Sensitivity DNA.xsy
Assay Class: High Sensitivity DNA Assay
Version: 1.03
Assay Comments: Copyright © 2003-2010 Agilent Technologies

Chip Information:

Chip Lot #:
Reagent Kit Lot #:
Chip Comments:



Assay Class: High Sensitivity DNA Assay
 Data Path: C:\...s and Settings\Bioanalyzer\2012-12-13\2012-12-13_001 LF.xad

Created: 12/13/2012 9:20:56 AM
 Modified: 12/13/2012 10:42:08 AM

Electrophoresis File Run Summary (Chip Summary)

Sample Name	Sample Comment	Rest. Digest	Status	Observation	Result Label	Result Color
D450 _2		<input type="checkbox"/>				
D600		<input type="checkbox"/>				
HiD1		<input type="checkbox"/>				
HiLB		<input type="checkbox"/>				
HiD2		<input type="checkbox"/>				
HiLB2		<input type="checkbox"/>				
sample 7		<input type="checkbox"/>				
sample 8		<input type="checkbox"/>				
sample 9		<input type="checkbox"/>				
sample 10		<input type="checkbox"/>				
sample 11		<input type="checkbox"/>				
Ladder		<input type="checkbox"/>				

Chip Lot #

Reagent Kit Lot #

Chip Comments :

Assay Class: High Sensitivity DNA Assay
Data Path: C:\...s and Settings\Bioanalyzer\2012-12-13\2012-12-13_001 LF.xad

Created: 12/13/2012 9:20:56 AM
Modified: 12/13/2012 10:42:08 AM

Electrophoresis Assay Details

General Analysis Settings

Number of Available Sample and Ladder Wells (Max.) : 12
Minimum Visible Range [s] : 32
Maximum Visible Range [s] : 138
Start Analysis Time Range [s] : 33
End Analysis Time Range [s] : 137.5
Ladder Concentration [pg/μl] : 1950
Uses Standard Area for Ladder Fragments
Lower Marker Concentration [pg/μl] : 125
Upper Marker Concentration [pg/μl] : 75
Used Upper Marker for Quantitation
Standard Curve Fit is Point to Point
Show Data Aligned to Lower and Upper Marker

Integrator Settings

Integration Start Time [s] : 33.05
Integration End Time [s] : 137
Slope Threshold : 0.8
Height Threshold [FU] : 5
Area Threshold : 0.1
Width Threshold [s] : 0.6
Baseline Plateau [s] : 0.5

Filter Settings

Filter Width [s] : 0.5
Polynomial Order : 4

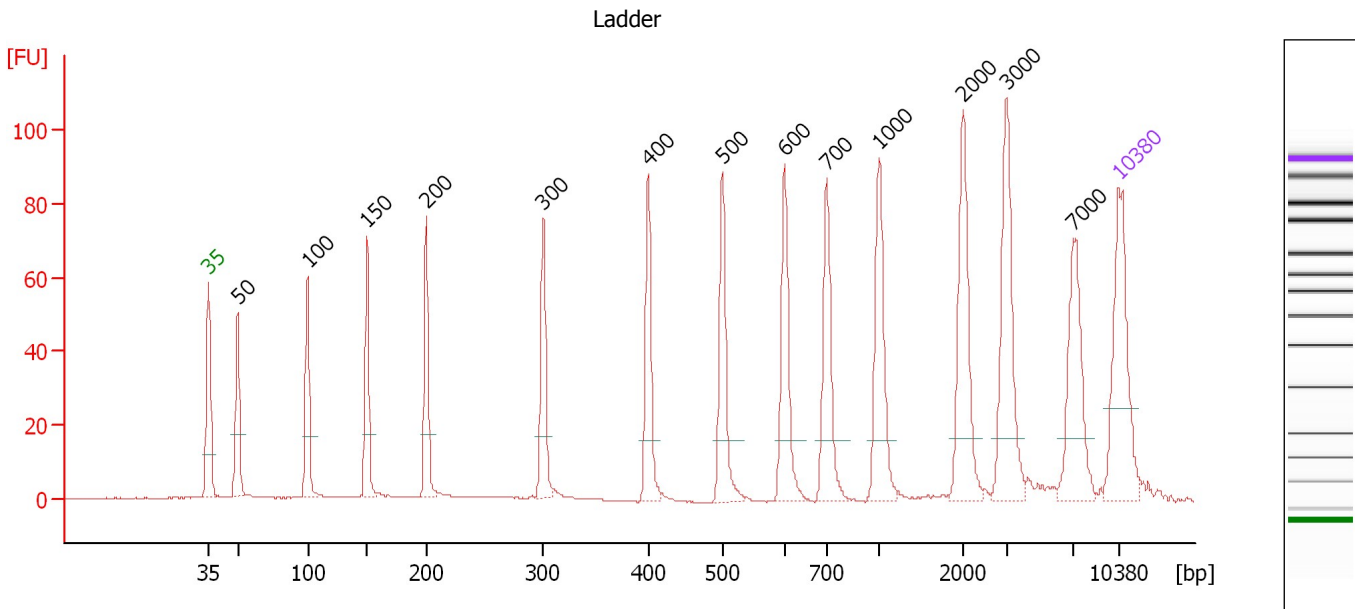
Ladder

Ladder Peak	Size	Area
1	35	160
2	50	210
3	100	208
4	150	221
5	200	242
6	300	270
7	400	305
8	500	306
9	600	336
10	700	321
11	1000	366
12	2000	413
13	3000	411
14	7000	400
15	10380	214

Assay Class: High Sensitivity DNA Assay
 Data Path: C:\...s and Settings\Bioanalyzer\2012-12-13\2012-12-13_001 LF.xad

Created: 12/13/2012 9:20:56 AM
 Modified: 12/13/2012 10:42:08 AM

Electropherogram Summary



Overall Results for Ladder

Noise: 0.1

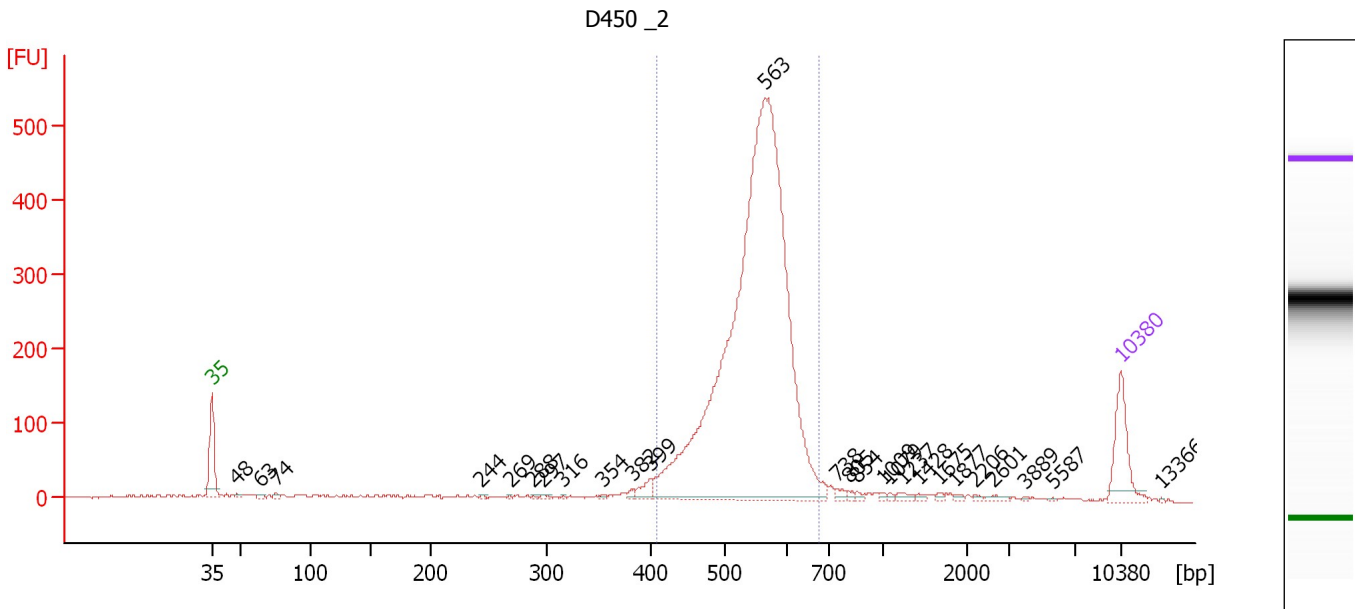
Peak table for Ladder

Peak	Size [bp]	Conc. [pg/μl]	Molarity [pmol/l]	Observations
1	35	125.00	5,411.3	Lower Marker
2	50	150.00	4,545.5	Ladder Peak
3	100	150.00	2,272.7	Ladder Peak
4	150	150.00	1,515.2	Ladder Peak
5	200	150.00	1,136.4	Ladder Peak
6	300	150.00	757.6	Ladder Peak
7	400	150.00	568.2	Ladder Peak
8	500	150.00	454.5	Ladder Peak
9	600	150.00	378.8	Ladder Peak
10	700	150.00	324.7	Ladder Peak
11	1,000	150.00	227.3	Ladder Peak
12	2,000	150.00	113.6	Ladder Peak
13	3,000	150.00	75.8	Ladder Peak
14	7,000	150.00	32.5	Ladder Peak
15	10,380	75.00	10.9	Upper Marker

Assay Class: High Sensitivity DNA Assay
 Data Path: C:\...s and Settings\Bioanalyzer\2012-12-13\2012-12-13_001 LF.xad

Created: 12/13/2012 9:20:56 AM
 Modified: 12/13/2012 10:42:08 AM

Electropherogram Summary Continued ...



Overall Results for sample 1 : D450_2

Number of peaks found: 26 Corr. Area 1: 3,354.4
 Noise: 1.5


Peak table for sample 1 : D450_2

Peak	Size [bp]	Conc. [pg/μl]	Molarity [pmol/l]	Observations
1	35	125.00	5,411.3	Lower Marker
2	48	5.83	184.6	
3	63	5.49	132.0	
4	74	6.49	132.1	
5	244	3.65	22.7	
6	269	2.18	12.3	
7	288	2.33	12.2	
8	297	5.51	28.1	
9	316	2.02	9.7	
10	354	3.18	13.6	
11	382	5.67	22.5	
12	399	25.06	95.2	
13	563	1,862.43	5,008.3	
14	738	8.20	16.8	
15	805	5.37	10.1	
16	854	5.25	9.3	
17	1,009	3.07	4.6	
18	1,079	3.27	4.6	
19	1,237	7.40	9.1	
20	1,428	3.71	3.9	
21	1,675	3.79	3.4	
22	1,877	3.27	2.6	
23	2,206	2.82	1.9	
24	2,601	5.94	3.5	
25	3,889	1.59	0.6	
26	5,587	1.42	0.4	


Assay Class: High Sensitivity DNA Assay
Data Path: C:\...s and Settings\Bioanalyzer\2012-12-13\2012-12-13_001 LF.xad

Created: 12/13/2012 9:20:56 AM
Modified: 12/13/2012 10:42:08 AM

Electropherogram Summary Continued ...**... Peak table for sample 1 : D450_2**

Peak	Size [bp]	Conc. [pg/μl]	Molarity [pmol/l]	Observations
27	 10,380	75.00	10.9	Upper Marker
28	13,366	0.00	0.0	

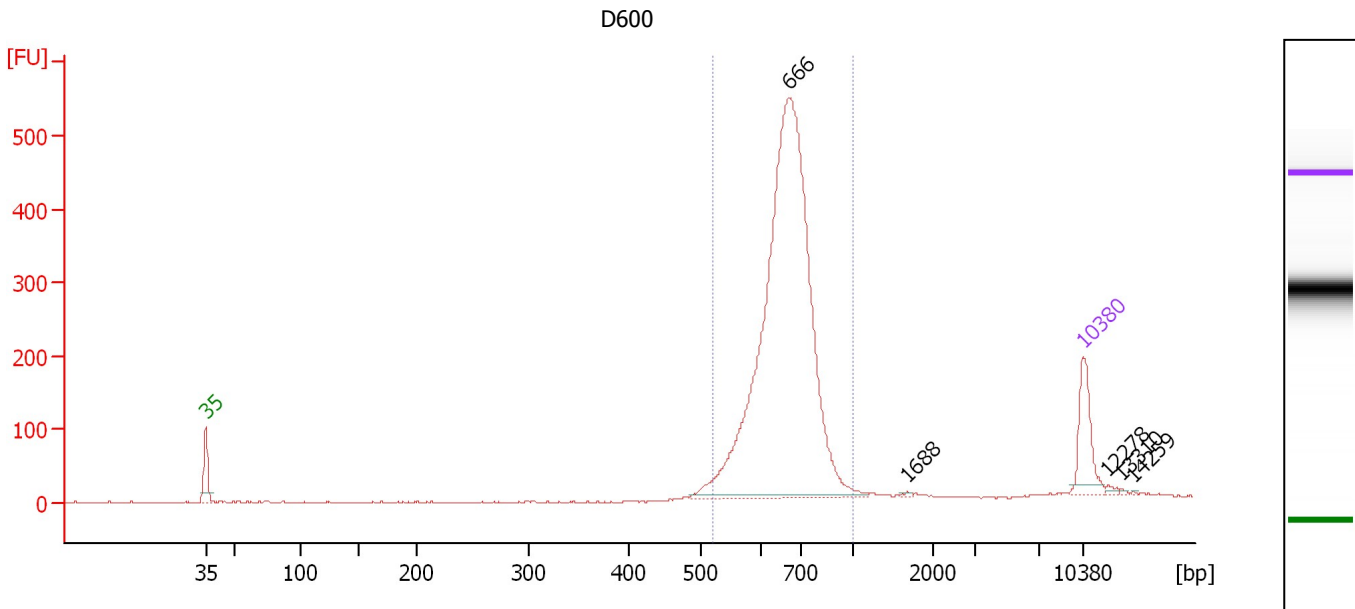
Region table for sample 1 : D450_2

From [bp]	To [bp]	Average Size [bp]	Molarity [pmol/l]	Conc. [pg/μl]	Corr. Area	% of Total	Size distribution in CV [%]	Color
407	675	545	5,348.7	1,903.74	3,354.4	87	9.1	

Assay Class: High Sensitivity DNA Assay
 Data Path: C:\...s and Settings\Bioanalyzer\2012-12-13\2012-12-13_001 LF.xad

Created: 12/13/2012 9:20:56 AM
 Modified: 12/13/2012 10:42:08 AM

Electropherogram Summary Continued ...



Overall Results for sample 2 : D600

Number of peaks found: 5 Corr. Area 1: 2,729.7
 Noise: 0.9

Peak table for sample 2 : D600

Peak	Size [bp]	Conc. [pg/μl]	Molarity [pmol/l]	Observations
1	35	125.00	5,411.3	Lower Marker
2	666	1,412.02	3,212.2	
3	1,688	2.33	2.1	
4	10,380	75.00	10.9	Upper Marker
5	12,278	0.00	0.0	
6	13,310	0.00	0.0	
7	14,259	0.00	0.0	

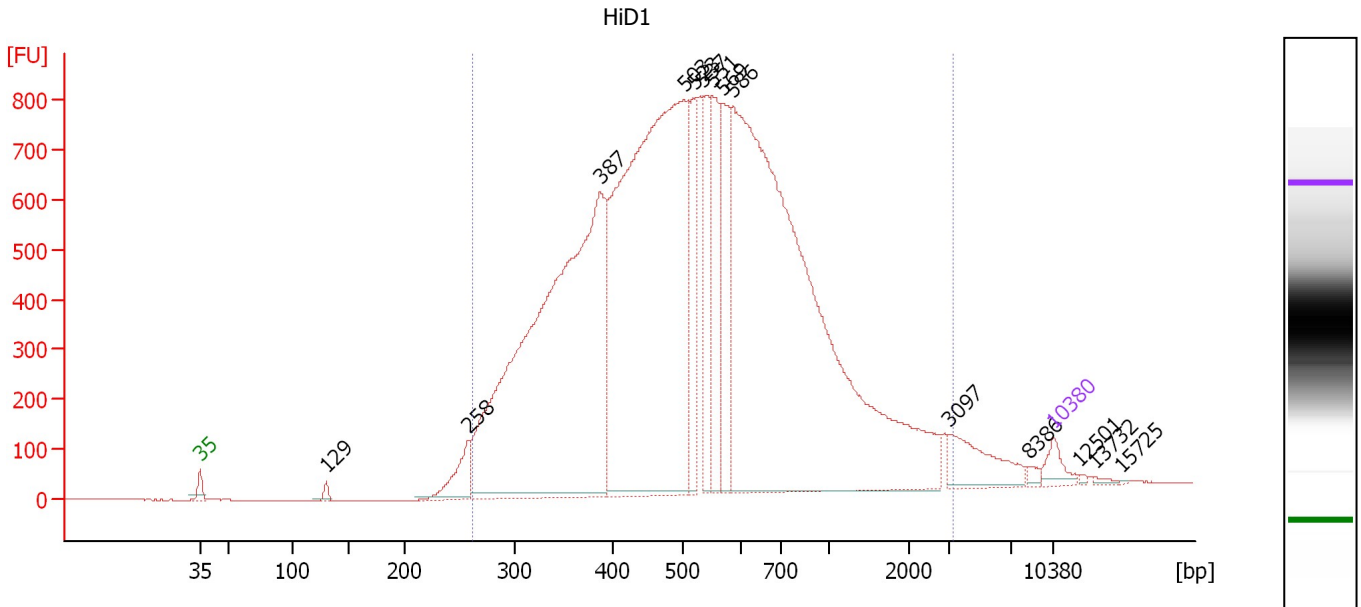
Region table for sample 2 : D600

From [bp]	To [bp]	Average Size [bp]	Molarity [pmol/l]	Conc. [pg/μl]	Corr. Area	% of Total	Size distribution in CV [%]	Color
520	1,000	670	3,176.6	1,388.51	2,729.7	96	11.0	Blue

Assay Class: High Sensitivity DNA Assay
 Data Path: C:\...s and Settings\Bioanalyzer\2012-12-13\2012-12-13_001 LF.xad

Created: 12/13/2012 9:20:56 AM
 Modified: 12/13/2012 10:42:08 AM

Electropherogram Summary Continued ...



Overall Results for sample 3 : HiD1

Number of peaks found: 14 Corr. Area 1: 22,363.1
 Noise: 0.5

Peak table for sample 3 : HiD1

Peak	Size [bp]	Conc. [pg/μl]	Molarity [pmol/l]	Observations
1	35	125.00	5,411.3	Lower Marker
2	129	36.82	431.2	
3	258	236.66	1,390.9	
4	387	4,429.15	17,323.2	
5	503	4,546.94	13,693.0	
6	523	415.77	1,204.1	
7	537	409.82	1,156.6	
8	551	581.91	1,598.8	
9	569	557.97	1,486.4	
10	586	5,189.19	13,414.7	
11	3,097	249.53	122.1	
12	8,386	19.53	3.5	
13	10,380	75.00	10.9	Upper Marker
14	12,501	0.00	0.0	
15	13,732	0.00	0.0	
16	15,725	0.00	0.0	

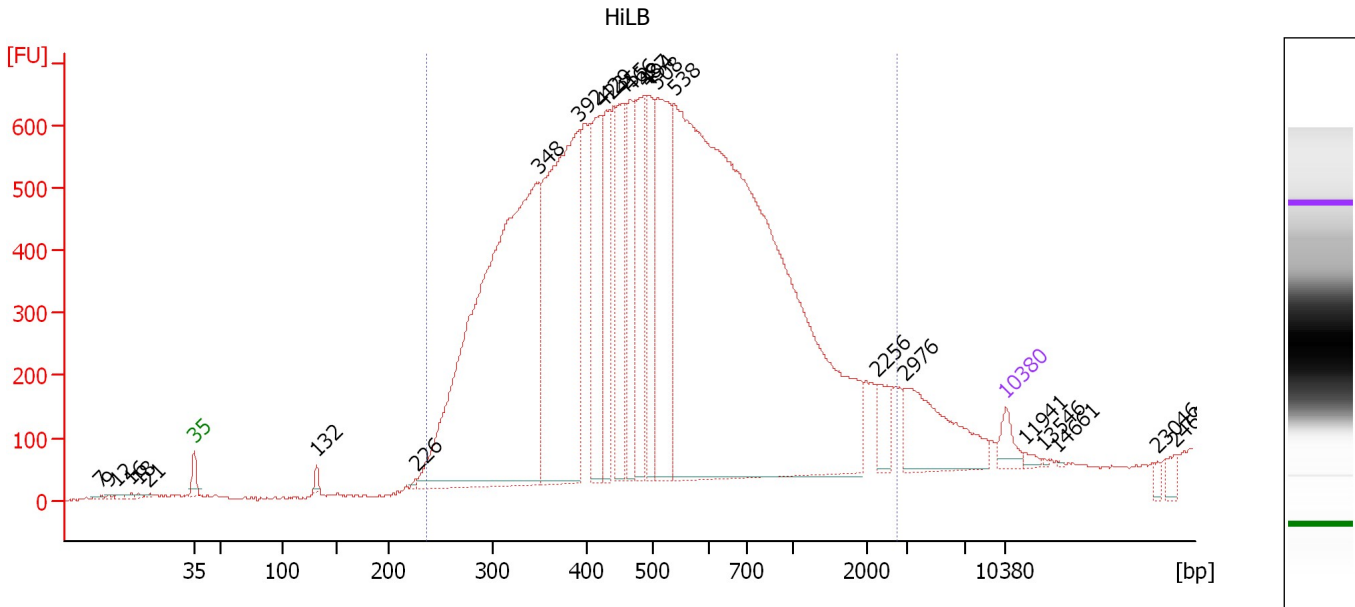
Region table for sample 3 : HiD1

From [bp]	To [bp]	Average Size [bp]	Molarity [pmol/l]	Conc. [pg/μl]	Corr. Area	% of Total	Size distribution in CV [%]	Color
262	3,337	624	52,636.7	16,528.34	22,363.1	97	66.1	Blue

Assay Class: High Sensitivity DNA Assay
 Data Path: C:\...s and Settings\Bioanalyzer\2012-12-13\2012-12-13_001 LF.xad

Created: 12/13/2012 9:20:56 AM
 Modified: 12/13/2012 10:42:08 AM

Electropherogram Summary Continued ...



Overall Results for sample 4 : HiLB

Number of peaks found: 25 Corr. Area 1: 19,962.3
 Noise: 2.5

Peak table for sample 4 : HiLB

Peak	Size [bp]	Conc. [pg/μl]	Molarity [pmol/l]	Observations
1	7	0.00	0.0	
2	9	0.00	0.0	
3	12	0.00	0.0	
4	16	0.00	0.0	
5	18	0.00	0.0	
6	21	0.00	0.0	
7	35	125.00	5,411.3	Lower Marker
8	132	35.77	411.7	
9	226	13.56	90.8	
10	348	4,112.74	17,884.4	
11	392	2,204.08	8,513.4	
12	423	672.76	2,410.2	
13	429	453.13	1,598.9	
14	455	516.67	1,719.8	
15	466	484.07	1,575.0	
16	487	671.50	2,090.6	
17	494	542.10	1,662.9	
18	508	991.54	2,956.6	
19	538	6,589.15	18,562.3	
20	2,256	120.67	81.1	
21	2,976	430.63	219.3	
22	10,380	75.00	10.9	Upper Marker
23	11,941	0.00	0.0	
24	13,546	0.00	0.0	
25	14,661	0.00	0.0	
26	23,046	0.00	0.0	


Assay Class: High Sensitivity DNA Assay
Data Path: C:\...s and Settings\Bioanalyzer\2012-12-13\2012-12-13_001 LF.xad

Created: 12/13/2012 9:20:56 AM
Modified: 12/13/2012 10:42:08 AM

Electropherogram Summary Continued ...**... Peak table for sample 4 : HiLB**

Peak	Size [bp]	Conc. [pg/ μ l]	Molarity [pmol/l]	Observations
27	24,607	0.00	0.0	

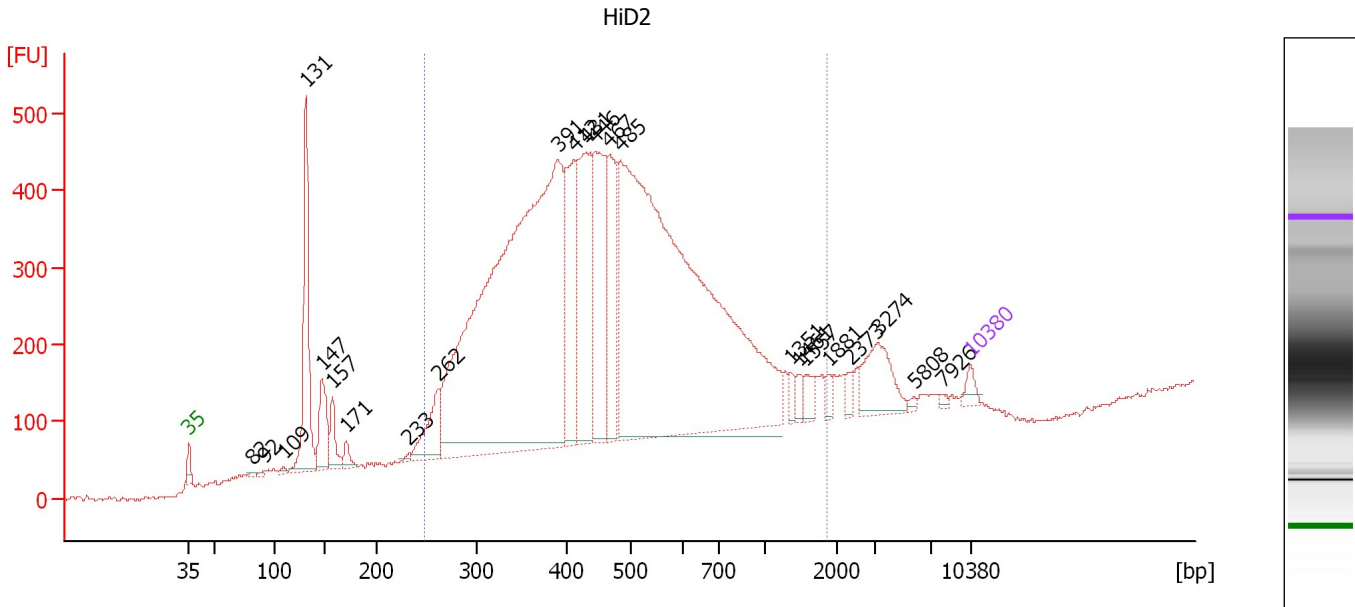
Region table for sample 4 : HiLB

From [bp]	To [bp]	Average Size [bp]	Molarity [pmol/l]	Conc. [pg/ μ l]	Corr. Area	% of Total	Size distribution in CV [%]	Color
236	2,755	601	60,834.5	17,890.14	19,962.3	97	65.7	

Assay Class: High Sensitivity DNA Assay
 Data Path: C:\...s and Settings\Bioanalyzer\2012-12-13\2012-12-13_001 LF.xad

Created: 12/13/2012 9:20:56 AM
 Modified: 12/13/2012 10:42:08 AM

Electropherogram Summary Continued ...



Overall Results for sample 5 : HiD2

Number of peaks found: 23 Corr. Area 1: 10,230.8
 Noise: 2.7


Peak table for sample 5 : HiD2

Peak	Size [bp]	Conc. [pg/μl]	Molarity [pmol/l]	Observations
1	35	125.00	5,411.3	Lower Marker
2	82	33.08	608.8	
3	92	26.59	437.3	
4	109	35.07	485.3	
5	131	1,596.97	18,425.0	
6	147	562.57	5,781.2	
7	157	281.59	2,710.9	
8	171	113.68	1,007.1	
9	233	28.42	184.5	
10	262	495.92	2,873.0	
11	391	8,582.23	33,271.6	
12	412	1,207.37	4,438.8	
13	431	1,540.45	5,420.9	
14	446	1,469.72	4,997.0	
15	467	911.06	2,953.3	
16	485	8,668.43	27,080.0	
17	1,351	76.25	85.5	
18	1,461	77.89	80.8	
19	1,557	116.09	113.0	
20	1,881	61.54	49.6	
21	2,373	70.76	45.2	
22	3,274	446.53	206.6	
23	5,808	22.16	5.8	
24	7,926	22.23	4.2	
25	10,380	75.00	10.9	Upper Marker

Assay Class: High Sensitivity DNA Assay
Data Path: C:\...s and Settings\Bioanalyzer\2012-12-13\2012-12-13_001 LF.xad

Created: 12/13/2012 9:20:56 AM
Modified: 12/13/2012 10:42:08 AM

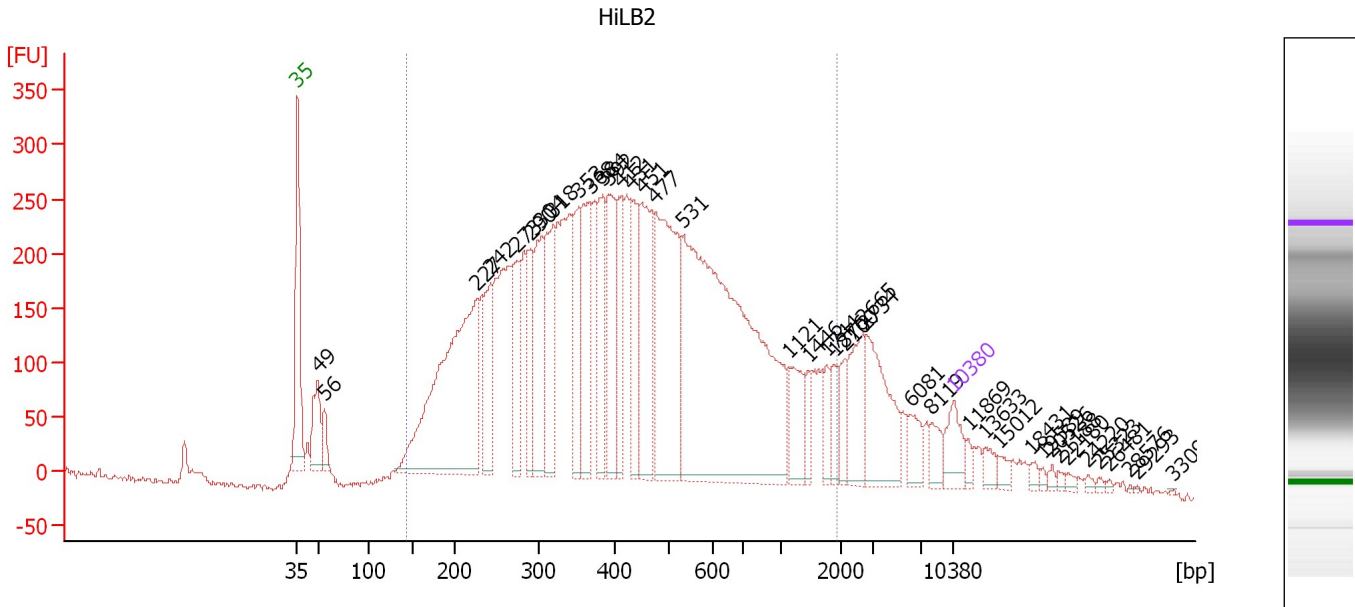
Electropherogram Summary Continued ...**... Region table for sample 5 : HiD2**

From [bp]	To [bp]	Average Size [bp]	Molarity [pmol/l]	Conc. [pg/μl]	Corr. Area	% of Total	Size distribution in CV [%]	Co lor
248	1,868	511	84,140.7	23,563.11	10,230.8	87	48.6	

Assay Class: High Sensitivity DNA Assay
 Data Path: C:\...s and Settings\Bioanalyzer\2012-12-13\2012-12-13_001 LF.xad

Created: 12/13/2012 9:20:56 AM
 Modified: 12/13/2012 10:42:08 AM

Electropherogram Summary Continued ...



Overall Results for sample 6 : HiLB2

Number of peaks found: 40 Corr. Area 1: 8,740.6
 Noise: 3.8

Peak table for sample 6 : HiLB2


Peak	Size [bp]	Conc. [pg/μl]	Molarity [pmol/l]	Observations
1	35	125.00	5,411.3	Lower Marker
2	49	165.17	5,068.9	
3	56	64.50	1,745.2	
4	227	1,102.65	7,372.0	
5	242	228.23	1,426.3	
6	273	230.68	1,278.0	
7	290	191.85	1,002.5	
8	304	283.12	1,412.9	
9	318	331.29	1,576.6	
10	353	213.08	914.9	
11	368	332.48	1,367.6	
12	384	254.19	1,003.4	
13	392	296.95	1,149.0	
14	412	187.79	690.6	
15	431	225.19	791.7	
16	451	353.98	1,189.4	
17	477	641.99	2,039.8	
18	531	1,663.01	4,748.9	
19	1,121	125.85	170.1	
20	1,446	49.04	51.4	
21	1,744	52.06	45.2	
22	1,876	55.57	44.9	
23	2,100	63.56	45.9	
24	2,665	134.05	76.2	
25	2,734	230.78	127.9	
26	6,081	62.97	15.7	

Assay Class: High Sensitivity DNA Assay
 Data Path: C:\...s and Settings\Bioanalyzer\2012-12-13\2012-12-13_001 LF.xad


Created: 12/13/2012 9:20:56 AM
 Modified: 12/13/2012 10:42:08 AM

Electropherogram Summary Continued ...

... Peak table for sample 6 : HiLB2

Peak	Size [bp]	Conc. [pg/μl]	Molarity [pmol/l]	Observations
27	8,119	44.60	8.3	
28	 10,380	75.00	10.9	Upper Marker
29	11,869	0.00	0.0	
30	13,633	0.00	0.0	
31	15,012	0.00	0.0	
32	18,431	0.00	0.0	
33	19,589	0.00	0.0	
34	20,526	0.00	0.0	
35	21,188	0.00	0.0	
36	22,180	0.00	0.0	
37	24,220	0.00	0.0	
38	25,323	0.00	0.0	
39	26,481	0.00	0.0	
40	28,576	0.00	0.0	
41	29,293	0.00	0.0	
42	33,098	0.00	0.0	

Region table for sample 6 : HiLB2

From [bp]	To [bp]	Average Size [bp]	Molarity [pmol/l]	Conc. [pg/μl]	Corr. Area	% of Total	Size distribution in CV [%]	Color
143	1,930	504	37,582.1	8,615.36	8,740.6	86	66.1	

Assay Class: High Sensitivity DNA Assay
Data Path: C:\...s and Settings\Bioanalyzer\2012-12-13\2012-12-13_001 LF.xad

Created: 12/13/2012 9:20:56 AM
Modified: 12/13/2012 10:42:08 AM

Gel Image

