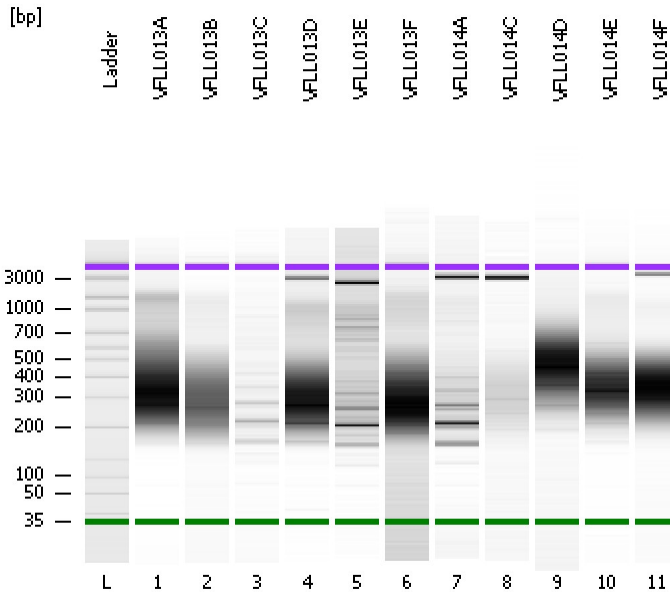


Assay Class: High Sensitivity DNA Assay  
Data Path: C:\...ents and Settings\Bioanalyzer\2012-12-13\2012-12-13\_002.xad

Created: 12/13/2012 10:25:08 AM  
Modified: 12/13/2012 11:30:04 AM

### Electrophoresis File Run Summary



#### Instrument Information:

Instrument Name: DE13701086      Firmware: C.01.069  
Serial#: DE13701086      Type: G2938B

#### Assay Information:

Assay Origin Path: C:\Program Files\Agilent\2100 bioanalyzer\2100 expert\assays\dsDNA\High Sensitivity DNA.xsy  
Assay Class: High Sensitivity DNA Assay  
Version: 1.03  
Assay Comments: Copyright © 2003-2010 Agilent Technologies

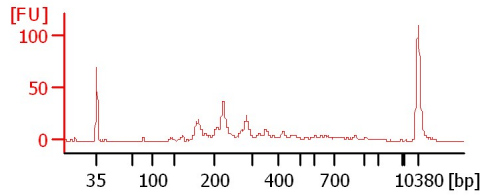
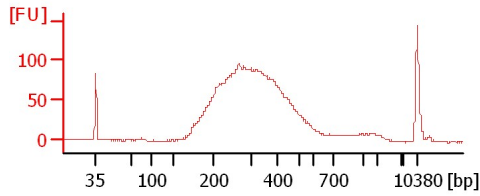
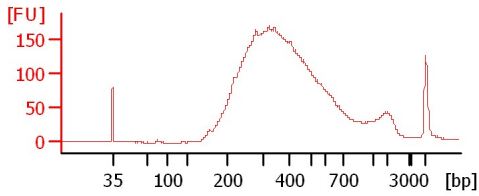
#### Chip Information:

Chip Lot #:      Reagent Kit Lot #:      Chip Comments:

VFLLO13A

VFLLO13B

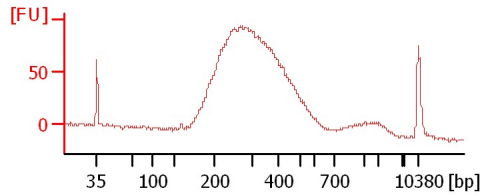
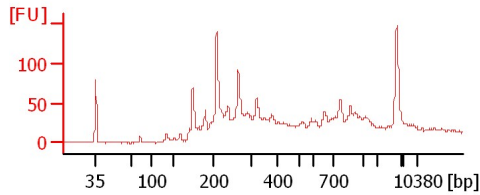
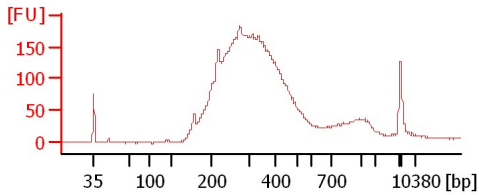
VFLLO13C



VFLLO13D

VFLLO13E

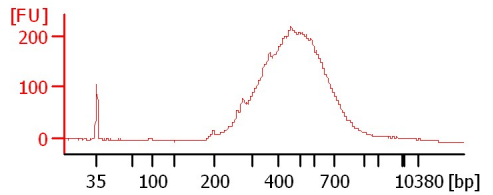
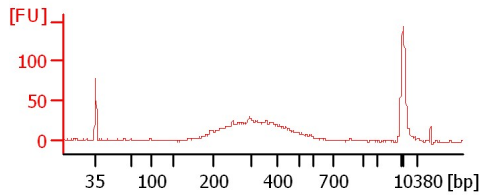
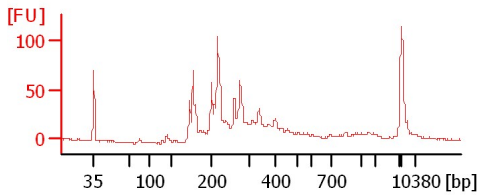
VFLLO13F



VFLLO14A

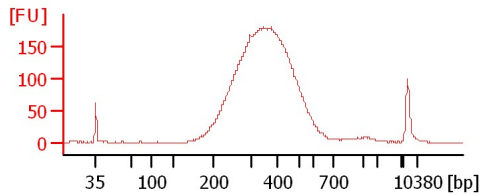
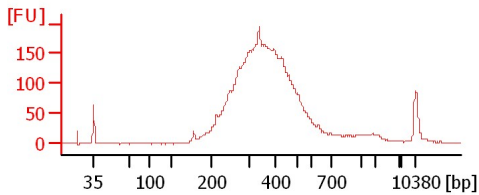
VFLLO14C

VFLLO14D



VFLLO14E

VFLLO14F



Assay Class: High Sensitivity DNA Assay  
Data Path: C:\...ents and Settings\Bioanalyzer\2012-12-13\2012-12-13\_002.xad

Created: 12/13/2012 10:25:08 AM  
Modified: 12/13/2012 11:30:04 AM

**Electrophoresis File Run Summary (Chip Summary)**

Sample Name	Sample Comment	Rest. Digest	Status	Observation	Result Label	Result Color
VFLL013A		<input type="checkbox"/>	✓			
VFLL013B		<input type="checkbox"/>	✓			
VFLL013C		<input type="checkbox"/>	✓			
VFLL013D		<input type="checkbox"/>	✓			
VFLL013E		<input type="checkbox"/>	✓			
VFLL013F		<input type="checkbox"/>	✓			
VFLL014A		<input type="checkbox"/>	✓			
VFLL014C		<input type="checkbox"/>	✓			
VFLL014D		<input type="checkbox"/>	✓			
VFLL014E		<input type="checkbox"/>	✓			
VFLL014F		<input type="checkbox"/>	✓			
Ladder		<input type="checkbox"/>	✓			

**Chip Lot #****Reagent Kit Lot #****Chip Comments :**

Assay Class: High Sensitivity DNA Assay  
Data Path: C:\...ents and Settings\Bioanalyzer\2012-12-13\2012-12-13\_002.xad

Created: 12/13/2012 10:25:08 AM  
Modified: 12/13/2012 11:30:04 AM

**Electrophoresis Assay Details**

**General Analysis Settings**

Number of Available Sample and Ladder Wells (Max.) : 12  
Minimum Visible Range [s] : 32  
Maximum Visible Range [s] : 138  
Start Analysis Time Range [s] : 33  
End Analysis Time Range [s] : 137.5  
Ladder Concentration [pg/μl] : 1950  
Uses Standard Area for Ladder Fragments  
Lower Marker Concentration [pg/μl] : 125  
Upper Marker Concentration [pg/μl] : 75  
Used Upper Marker for Quantitation  
Standard Curve Fit is Point to Point  
Show Data Aligned to Lower and Upper Marker

**Integrator Settings**

Integration Start Time [s] : 33.05  
Integration End Time [s] : 137  
Slope Threshold : 0.8  
Height Threshold [FU] : 5  
Area Threshold : 0.1  
Width Threshold [s] : 0.6  
Baseline Plateau [s] : 0.5

**Filter Settings**

Filter Width [s] : 0.5  
Polynomial Order : 4

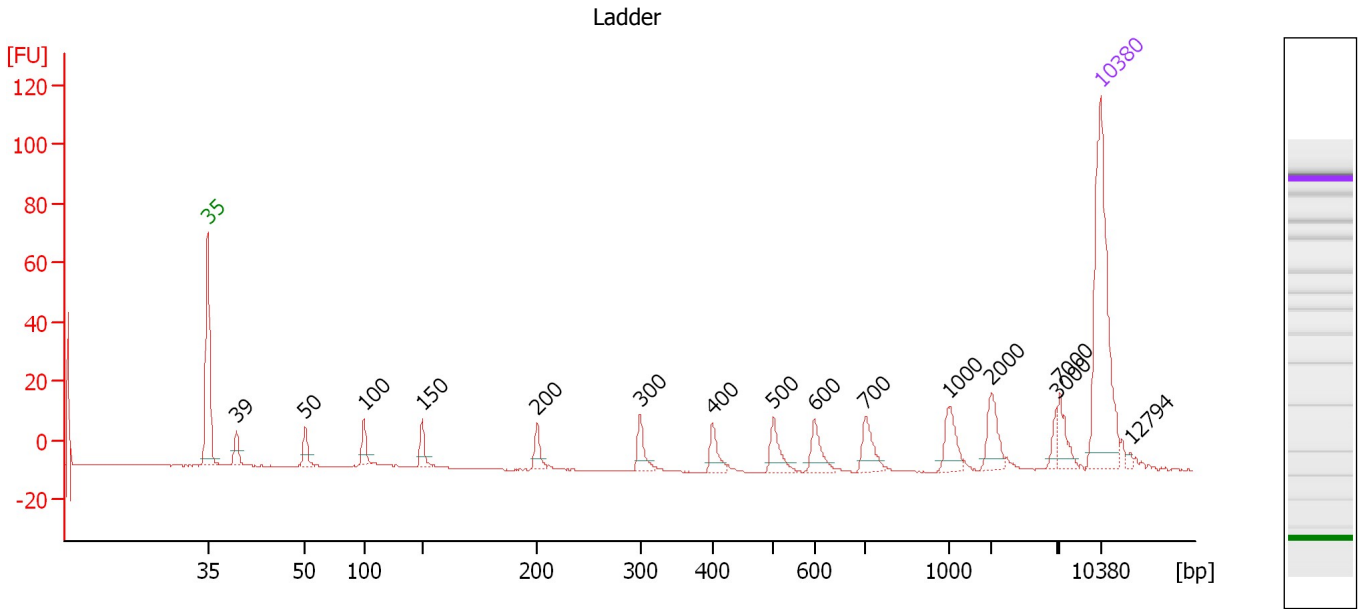
**Ladder**

Ladder Peak	Size	Area
1	35	160
2	50	210
3	100	208
4	150	221
5	200	242
6	300	270
7	400	305
8	500	306
9	600	336
10	700	321
11	1000	366
12	2000	413
13	3000	411
14	7000	400
15	10380	214

Assay Class: High Sensitivity DNA Assay  
 Data Path: C:\...ents and Settings\Bioanalyzer\2012-12-13\2012-12-13\_002.xad

Created: 12/13/2012 10:25:08 AM  
 Modified: 12/13/2012 11:30:04 AM

**Electropherogram Summary**



**Overall Results for Ladder**

Noise: 0.2

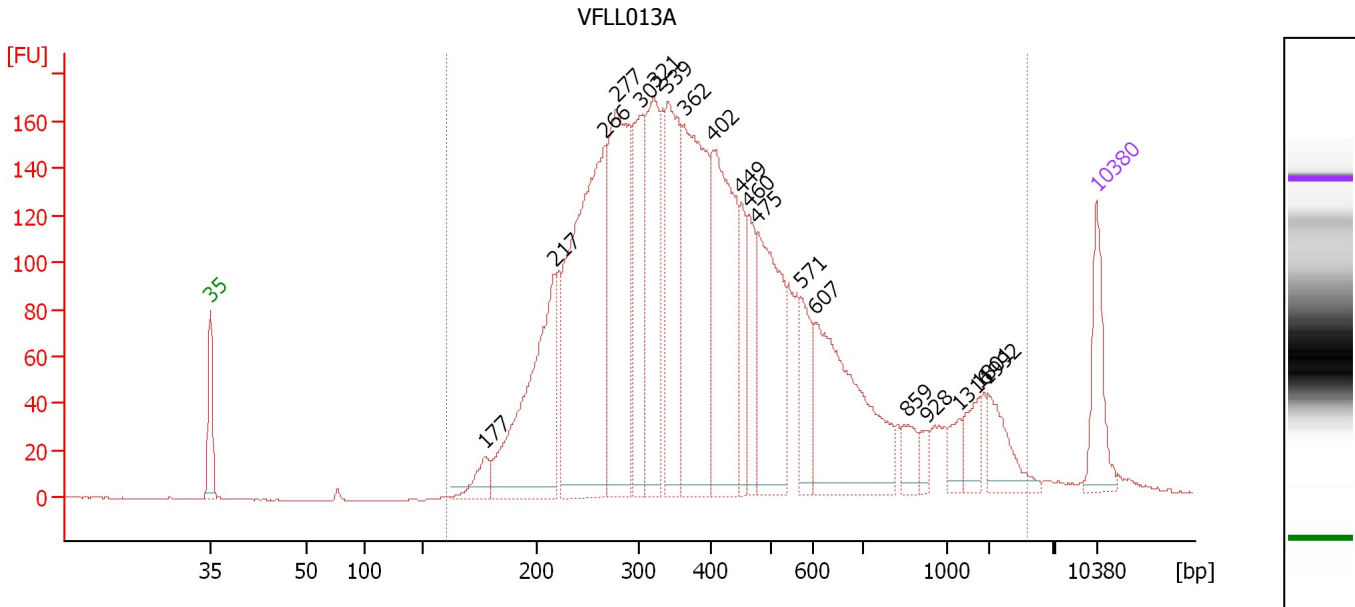
**Peak table for Ladder**

Peak	Size [bp]	Conc. [pg/μl]	Molarity [pmol/l]	Observations
1	35	125.00	5,411.3	Lower Marker
2	39	0.00	0.0	
3	50	150.00	4,545.5	Ladder Peak
4	100	150.00	2,272.7	Ladder Peak
5	150	150.00	1,515.2	Ladder Peak
6	200	150.00	1,136.4	Ladder Peak
7	300	150.00	757.6	Ladder Peak
8	400	150.00	568.2	Ladder Peak
9	500	150.00	454.5	Ladder Peak
10	600	150.00	378.8	Ladder Peak
11	700	150.00	324.7	Ladder Peak
12	1,000	150.00	227.3	Ladder Peak
13	2,000	150.00	113.6	Ladder Peak
14	3,000	150.00	75.8	Ladder Peak
15	7,000	150.00	32.5	Ladder Peak
16	10,380	75.00	10.9	Upper Marker
17	12,794	0.00	0.0	

Assay Class: High Sensitivity DNA Assay  
 Data Path: C:\...ents and Settings\Bioanalyzer\2012-12-13\2012-12-13\_002.xad

Created: 12/13/2012 10:25:08 AM  
 Modified: 12/13/2012 11:30:04 AM

**Electropherogram Summary Continued ...**



**Overall Results for sample 1 : VFLLO13A**

Number of peaks found: 19      Corr. Area 1: 4,613.6  
 Noise: 0.2

**Peak table for sample 1 : VFLLO13A**

Peak	Size [bp]	Conc. [pg/μl]	Molarity [pmol/l]	Observations
1	35	125.00	5,411.3	Lower Marker
2	177	50.61	433.3	
3	217	429.09	2,995.5	
4	266	721.74	4,105.1	
5	277	472.74	2,583.1	
6	302	217.07	1,087.5	
7	321	294.15	1,388.6	
8	339	297.67	1,331.4	
9	362	445.43	1,865.8	
10	402	371.48	1,399.8	
11	449	78.19	263.9	
12	460	101.95	335.5	
13	475	273.08	870.2	
14	571	88.35	234.6	
15	607	311.22	776.7	
16	859	34.85	61.5	
17	928	17.11	27.9	
18	1,316	26.32	30.3	
19	1,801	37.24	31.3	
20	1,992	60.32	45.9	
21	10,380	75.00	10.9	Upper Marker

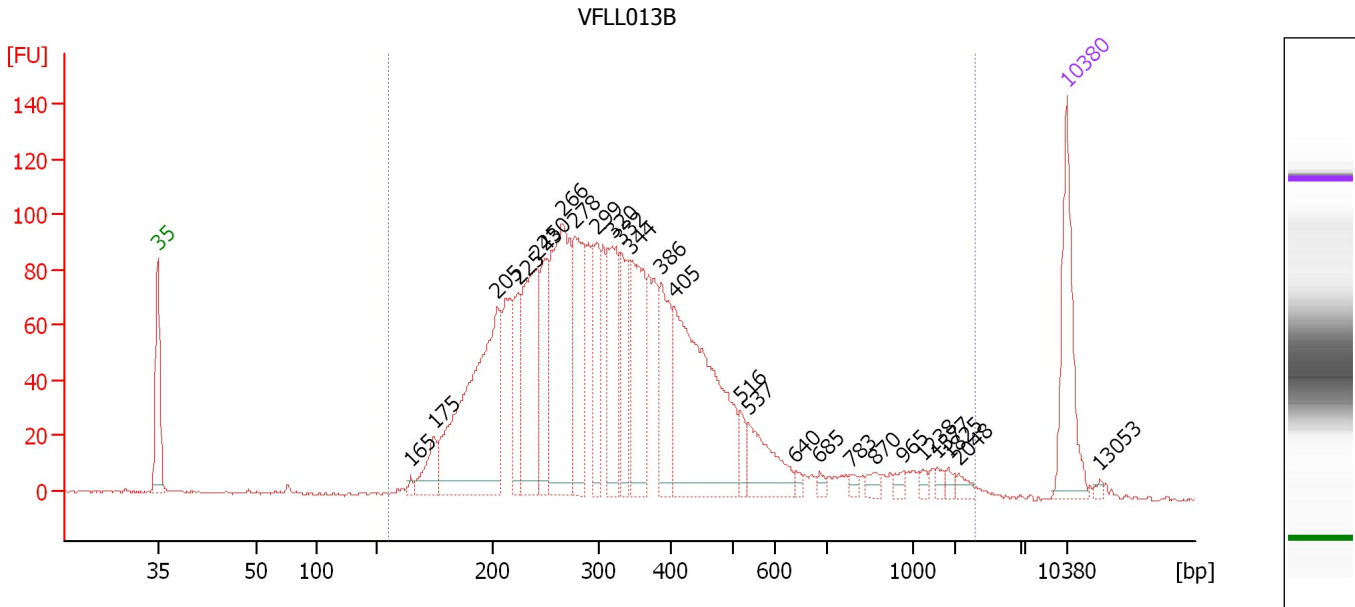
**Region table for sample 1 : VFLLO13A**

From [bp]	To [bp]	Average Size [bp]	Molarity [pmol/l]	Conc. [pg/μl]	Corr. Area	% of Total	Size distribution in CV [%]	Color
161	2,616	474	21,061.4	4,617.01	4,613.6	99	78.0	Blue

Assay Class: High Sensitivity DNA Assay  
 Data Path: C:\...ents and Settings\Bioanalyzer\2012-12-13\2012-12-13\_002.xad

Created: 12/13/2012 10:25:08 AM  
 Modified: 12/13/2012 11:30:04 AM

**Electropherogram Summary Continued ...**



**Overall Results for sample 2 : VFLLO13B**

Number of peaks found: 26                      Corr. Area 1: 2,411.4  
 Noise: 0.5

**Peak table for sample 2 : VFLLO13B**

Peak	Size [bp]	Conc. [pg/μl]	Molarity [pmol/l]	Observations
1	35	125.00	5,411.3	Lower Marker
2	165	5.05	46.4	
3	175	40.89	354.3	
4	205	331.06	2,448.4	
5	225	67.79	457.4	
6	243	166.45	1,039.4	
7	250	79.81	483.5	
8	266	240.57	1,370.1	
9	278	131.05	714.9	
10	299	77.11	390.7	
11	320	111.45	527.9	
12	332	77.59	354.1	
13	344	128.33	565.0	
14	386	86.38	339.2	
15	405	270.08	1,010.7	
16	516	18.50	54.3	
17	537	59.48	167.9	
18	640	4.75	11.3	
19	685	5.45	12.0	
20	783	4.95	9.6	
21	870	7.60	13.2	
22	965	6.07	9.5	
23	1,238	4.66	5.7	
24	1,577	5.64	5.4	
25	1,825	5.06	4.2	
26	2,048	6.32	4.7	

Assay Class: High Sensitivity DNA Assay  
Data Path: C:\...ents and Settings\Bioanalyzer\2012-12-13\2012-12-13\_002.xad

Created: 12/13/2012 10:25:08 AM  
Modified: 12/13/2012 11:30:04 AM

**Electropherogram Summary Continued ...****... Peak table for sample 2 : VFLLO13B**

Peak	Size [bp]	Conc. [pg/ $\mu$ l]	Molarity [pmol/l]	Observations
27	10,380	75.00	10.9	Upper Marker
28	13,053	0.00	0.0	

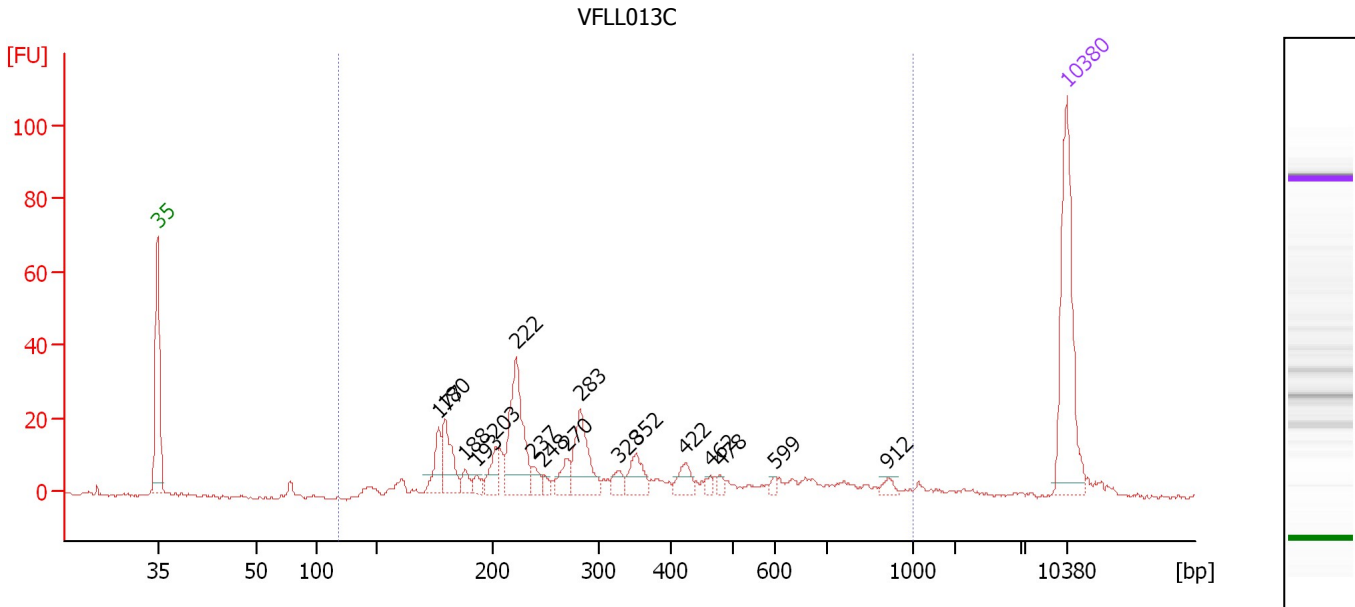
**Region table for sample 2 : VFLLO13B**

From [bp]	To [bp]	Average Size [bp]	Molarity [pmol/l]	Conc. [pg/ $\mu$ l]	Corr. Area	% of Total	Size distribution in CV [%]	Color
155	2,295	370	12,079.2	2,280.58	2,411.4	99	67.5	

Assay Class: High Sensitivity DNA Assay  
 Data Path: C:\...ents and Settings\Bioanalyzer\2012-12-13\2012-12-13\_002.xad

Created: 12/13/2012 10:25:08 AM  
 Modified: 12/13/2012 11:30:04 AM

**Electropherogram Summary Continued ...**



**Overall Results for sample 3 : VFL013C**

Number of peaks found: 17                      Corr. Area 1: 359.0  
 Noise: 0.4

**Peak table for sample 3 : VFL013C**

Peak	Size [bp]	Conc. [pg/μl]	Molarity [pmol/l]	Observations
1	35	125.00	5,411.3	Lower Marker
2	177	25.72	220.2	
3	180	39.86	336.2	
4	188	9.74	78.3	
5	193	7.59	59.5	
6	203	18.61	139.2	
7	222	82.86	565.2	
8	237	10.03	64.0	
9	248	4.69	28.7	
10	270	15.05	84.4	
11	283	48.79	260.9	
12	328	9.42	43.5	
13	352	20.84	89.7	
14	422	13.46	48.3	
15	462	3.85	12.6	
16	478	3.66	11.6	
17	599	3.47	8.8	
18	912	4.78	7.9	
19	10,380	75.00	10.9	Upper Marker

**Region table for sample 3 : VFL013C**

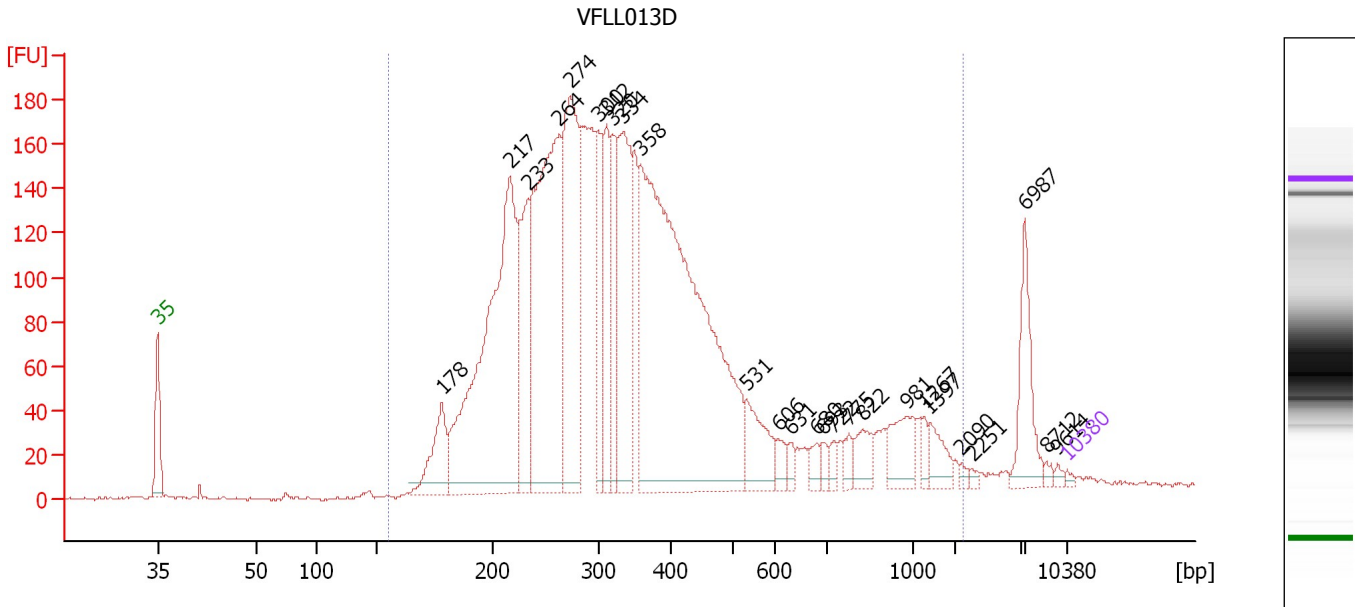
From [bp]	To [bp]	Average Size [bp]	Molarity [pmol/l]	Conc. [pg/μl]	Corr. Area	% of Total	Size distribution in CV [%]	Color
119	1,000	353	2,562.2	435.73	359.0	91	56.3	Blue



Assay Class: High Sensitivity DNA Assay  
 Data Path: C:\...ents and Settings\Bioanalyzer\2012-12-13\2012-12-13\_002.xad

Created: 12/13/2012 10:25:08 AM  
 Modified: 12/13/2012 11:30:04 AM

**Electropherogram Summary Continued ...**



**Overall Results for sample 4 : VFL013D**

Number of peaks found: 26                      Corr. Area 1: 4,198.7  
 Noise: 0.7

**Peak table for sample 4 : VFL013D**

Peak	Size [bp]	Conc. [pg/μl]	Molarity [pmol/l]	Observations
1	35	125.00	5,411.3	Lower Marker
2	178	2,618.59	22,250.2	
3	217	17,438.31	121,730.8	
4	233	5,035.74	32,681.8	
5	264	14,180.22	81,496.0	
6	274	8,967.06	49,641.3	
7	300	3,262.62	16,465.3	
8	312	3,190.40	15,515.4	
9	320	3,097.51	14,672.5	
10	334	6,174.50	27,992.2	
11	358	24,918.36	105,573.3	
12	531	2,006.55	5,726.5	
13	606	438.69	1,096.4	
14	631	322.93	775.9	
15	680	436.09	971.2	
16	693	325.01	710.6	
17	722	302.51	634.5	
18	775	435.14	850.3	
19	822	897.76	1,653.8	
20	981	1,350.60	2,085.1	
21	1,267	331.90	396.9	
22	1,397	775.43	841.0	
23	2,090	121.56	88.1	
24	2,251	101.67	68.4	
25	6,987	1,957.50	424.5	
26	8,712	118.04	20.5	


Assay Class: High Sensitivity DNA Assay  
Data Path: C:\...ents and Settings\Bioanalyzer\2012-12-13\2012-12-13\_002.xad

Created: 12/13/2012 10:25:08 AM  
Modified: 12/13/2012 11:30:04 AM

**Electropherogram Summary Continued ...****... Peak table for sample 4 : VFLLO13D**

Peak	Size [bp]	Conc. [pg/ $\mu$ l]	Molarity [pmol/l]	Observations
27	9,614	103.76	16.4	
28	10,380	75.00	10.9	Upper Marker

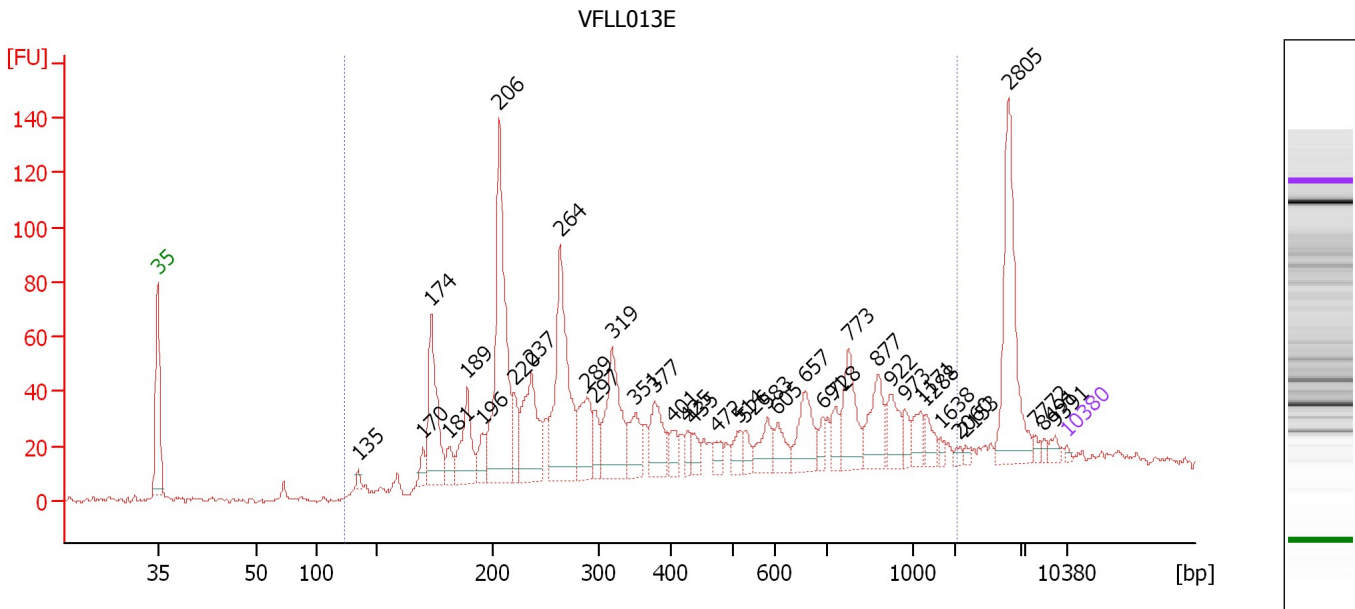
**Region table for sample 4 : VFLLO13D**

From [bp]	To [bp]	Average Size [bp]	Molarity [pmol/l]	Conc. [pg/ $\mu$ l]	Corr. Area	% of Total	Size distribution in CV [%]	Color
156	2,115	387	545,610.2	106,638.07	4,198.7	96	64.2	

Assay Class: High Sensitivity DNA Assay  
 Data Path: C:\...ents and Settings\Bioanalyzer\2012-12-13\2012-12-13\_002.xad

Created: 12/13/2012 10:25:08 AM  
 Modified: 12/13/2012 11:30:04 AM

**Electropherogram Summary Continued ...**



**Overall Results for sample 5 : VFLLO13E**

Number of peaks found: 39      Corr. Area 1: 1,370.6  
 Noise: 1.1

**Peak table for sample 5 : VFLLO13E**

Peak	Size [bp]	Conc. [pg/μl]	Molarity [pmol/l]	Observations
1	35	125.00	5,411.3	Lower Marker
2	135	240.97	2,699.6	
3	170	561.18	4,997.1	
4	174	4,283.32	37,356.2	
5	181	772.45	6,453.6	
6	189	2,581.88	20,674.5	
7	196	935.33	7,243.4	
8	206	9,327.49	68,539.1	
9	220	1,261.87	8,672.6	
10	237	3,778.95	24,176.8	
11	264	6,645.94	38,101.3	
12	289	2,167.75	11,360.9	
13	297	889.29	4,536.3	
14	319	3,698.94	17,562.8	
15	351	1,468.12	6,342.0	
16	377	1,690.21	6,790.9	
17	401	612.70	2,317.6	
18	425	449.73	1,604.0	
19	435	524.41	1,827.8	
20	472	477.49	1,531.3	
21	514	713.02	2,102.1	
22	526	447.48	1,288.8	
23	583	970.92	2,524.7	
24	605	758.60	1,898.4	
25	657	1,742.19	4,016.6	
26	691	428.75	940.1	

Assay Class: High Sensitivity DNA Assay  
 Data Path: C:\...ents and Settings\Bioanalyzer\2012-12-13\2012-12-13\_002.xad

Created: 12/13/2012 10:25:08 AM  
 Modified: 12/13/2012 11:30:04 AM

**Electropherogram Summary Continued ...**

**... Peak table for sample 5 : VFLLO13E**

Peak	Size [bp]	Conc. [pg/µl]	Molarity [pmol/l]	Observations
27	728	688.58	1,432.5	
28	773	2,030.94	3,979.0	
29	877	1,624.61	2,806.4	
30	922	1,073.47	1,763.8	
31	973	471.73	734.6	
32	1,171	640.86	828.9	
33	1,288	510.49	600.5	
34	1,638	168.90	156.2	
35	2,060	136.35	100.3	
36	2,153	108.91	76.6	
37	2,805	3,980.82	2,150.1	
38	7,772	156.15	30.4	
39	8,491	138.67	24.7	
40	9,391	213.02	34.4	
41	▶ 10,380	75.00	10.9	Upper Marker

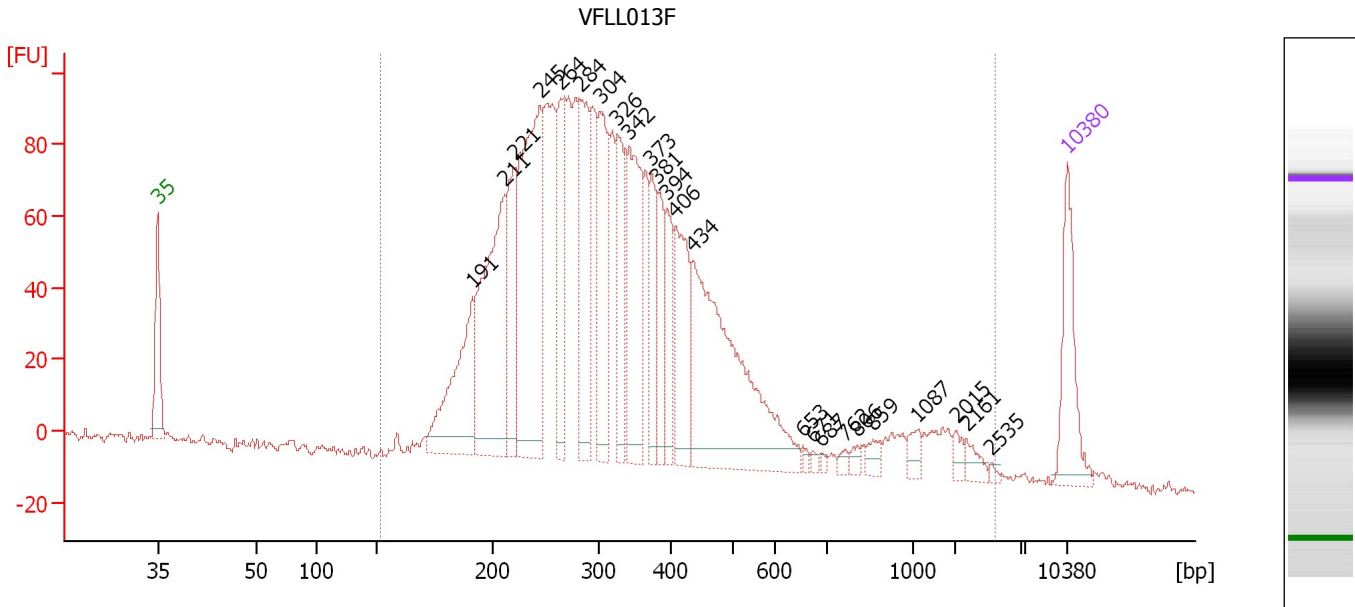
**Region table for sample 5 : VFLLO13E**

From [bp]	To [bp]	Average Size [bp]	Molarity [pmol/l]	Conc. [pg/µl]	Corr. Area	% of Total	Size distribution in CV [%]	Color
123	2,020	464	321,028.2	60,972.98	1,370.6	87	69.2	■

Assay Class: High Sensitivity DNA Assay  
 Data Path: C:\...ents and Settings\Bioanalyzer\2012-12-13\2012-12-13\_002.xad

Created: 12/13/2012 10:25:08 AM  
 Modified: 12/13/2012 11:30:04 AM

**Electropherogram Summary Continued ...**



**Overall Results for sample 6 : VFL013F**

Number of peaks found: 24                      Corr. Area 1: 2,466.0  
 Noise: 1.0

**Peak table for sample 6 : VFL013F**

Peak	Size [bp]	Conc. [pg/μl]	Molarity [pmol/l]	Observations
1	35	125.00	5,411.3	Lower Marker
2	191	190.26	1,506.8	
3	211	307.77	2,204.9	
4	221	140.96	965.7	
5	245	369.22	2,282.7	
6	264	127.72	731.8	
7	284	148.08	789.0	
8	304	144.28	719.9	
9	326	114.73	532.6	
10	342	190.91	846.3	
11	373	74.81	304.2	
12	381	69.73	277.5	
13	394	68.28	262.7	
14	406	118.43	441.8	
15	434	362.83	1,266.1	
16	653	4.68	10.9	
17	671	4.81	10.9	
18	687	3.94	8.7	
19	762	6.45	12.8	
20	806	7.55	14.2	
21	859	12.49	22.0	
22	1,087	15.17	21.1	
23	2,015	10.36	7.8	
24	2,161	12.28	8.6	
25	2,535	3.14	1.9	
26	10,380	75.00	10.9	Upper Marker

Assay Class: High Sensitivity DNA Assay  
Data Path: C:\...ents and Settings\Bioanalyzer\2012-12-13\2012-12-13\_002.xad

Created: 12/13/2012 10:25:08 AM  
Modified: 12/13/2012 11:30:04 AM

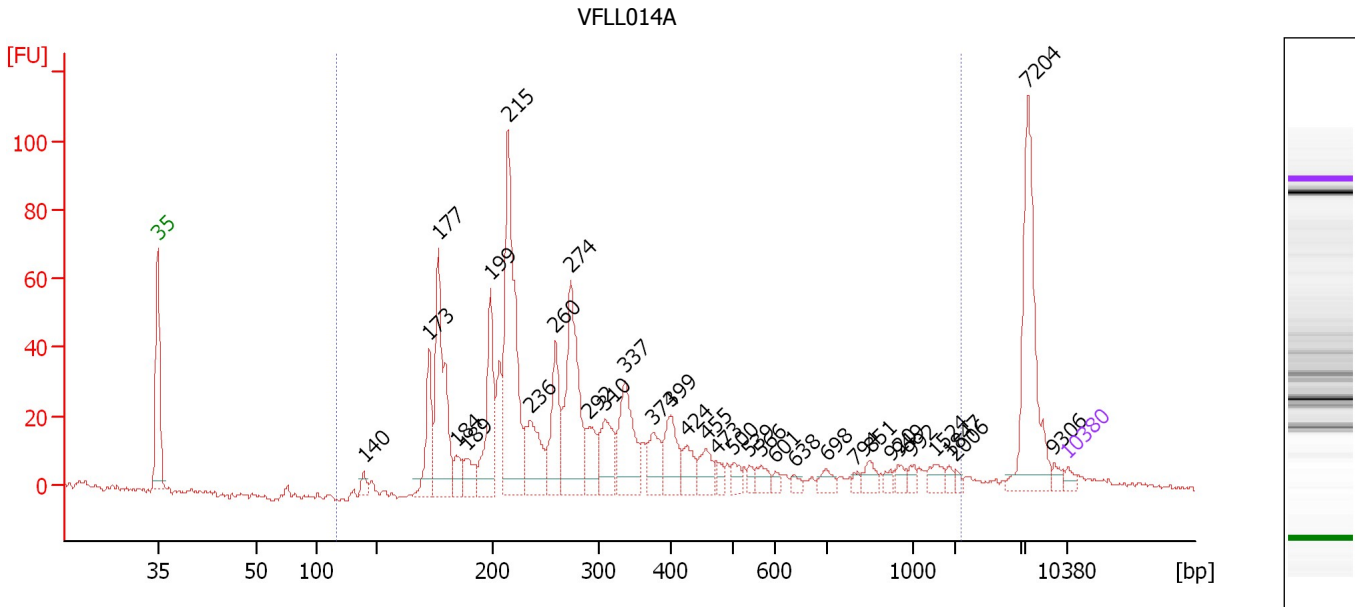
**Electropherogram Summary Continued ...****... Region table for sample 6 : VFLL013F**

<b>From [bp]</b>	<b>To [bp]</b>	<b>Average Size [bp]</b>	<b>Molarity [pmol/l]</b>	<b>Conc. [pg/μl]</b>	<b>Corr. Area</b>	<b>% of Total</b>	<b>Size distribution in CV [%]</b>	<b>Co lor</b>
152	2,609	392	17,218.9	3,300.68	2,466.0	98	80.7	

Assay Class: High Sensitivity DNA Assay  
 Data Path: C:\...ents and Settings\Bioanalyzer\2012-12-13\2012-12-13\_002.xad

Created: 12/13/2012 10:25:08 AM  
 Modified: 12/13/2012 11:30:04 AM

**Electropherogram Summary Continued ...**



**Overall Results for sample 7 : VFLLO14A**

Number of peaks found: 34      Corr. Area 1: 820.4  
 Noise: 0.7

**Peak table for sample 7 : VFLLO14A**

Peak	Size [bp]	Conc. [pg/μl]	Molarity [pmol/l]	Observations
1	35	125.00	5,411.3	Lower Marker
2	140	172.64	1,870.2	
3	173	1,048.29	9,190.2	
4	177	2,567.67	22,006.1	
5	184	345.61	2,838.9	
6	189	473.23	3,800.5	
7	199	1,602.61	12,198.3	
8	215	3,697.09	26,063.5	
9	236	1,153.53	7,413.1	
10	260	1,167.75	6,807.6	
11	274	2,367.47	13,083.6	
12	292	585.46	3,040.8	
13	310	858.92	4,196.7	
14	337	1,267.95	5,705.8	
15	374	571.59	2,314.0	
16	399	690.82	2,621.3	
17	424	383.26	1,368.4	
18	455	394.29	1,312.5	
19	473	139.36	446.5	
20	500	174.87	529.9	
21	539	112.98	317.5	
22	566	203.42	544.8	
23	601	85.95	216.8	
24	638	92.50	219.7	
25	698	186.94	405.6	
26	794	82.92	158.2	

Assay Class: High Sensitivity DNA Assay  
 Data Path: C:\...ents and Settings\Bioanalyzer\2012-12-13\2012-12-13\_002.xad


Created: 12/13/2012 10:25:08 AM  
 Modified: 12/13/2012 11:30:04 AM

### Electropherogram Summary Continued ...

#### ... Peak table for sample 7 : VFLLO14A

Peak	Size [bp]	Conc. [pg/μl]	Molarity [pmol/l]	Observations
27	851	203.87	362.9	
28	920	90.85	149.5	
29	949	125.39	200.2	
30	992	97.62	149.2	
31	1,524	168.37	167.4	
32	1,847	72.84	59.8	
33	2,006	52.88	39.9	
34	7,204	1,858.79	391.0	
35	9,306	89.78	14.6	
36	▶ 10,380	75.00	10.9	Upper Marker

#### Region table for sample 7 : VFLLO14A

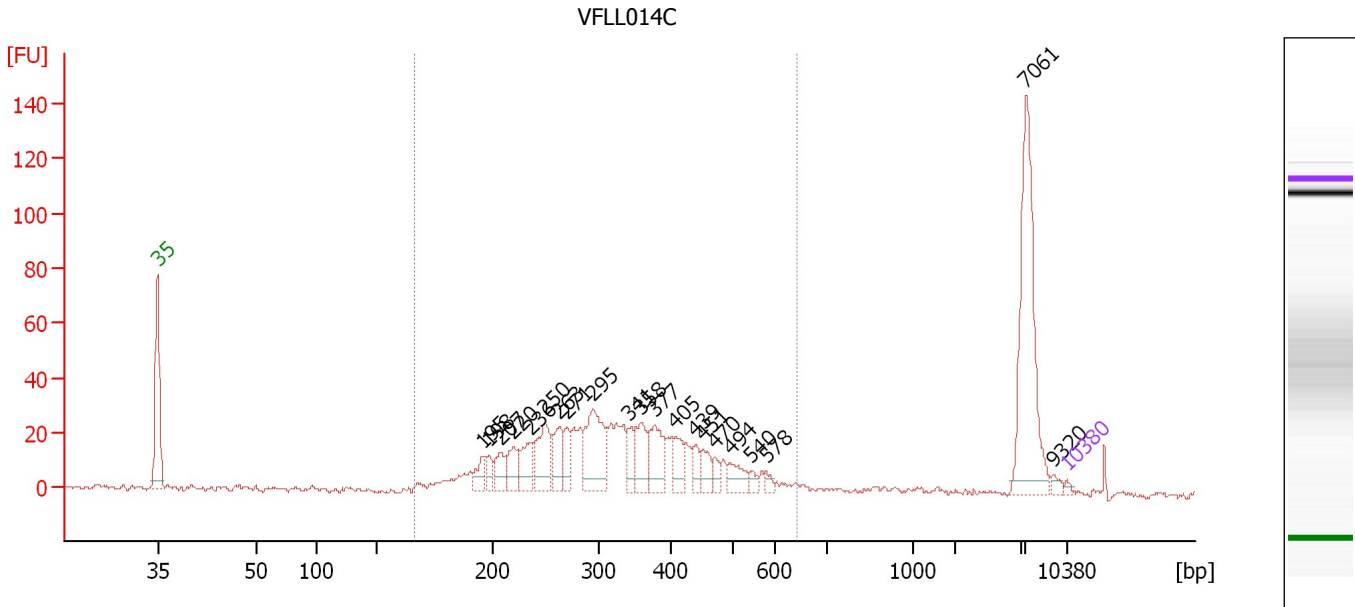
From [bp]	To [bp]	Average Size [bp]	Molarity [pmol/l]	Conc. [pg/μl]	Corr. Area	% of Total	Size distribution in CV [%]	Color
116	2,090	364	117,100.6	19,685.48	820.4	85	80.8	



Assay Class: High Sensitivity DNA Assay  
 Data Path: C:\...ents and Settings\Bioanalyzer\2012-12-13\2012-12-13\_002.xad

Created: 12/13/2012 10:25:08 AM  
 Modified: 12/13/2012 11:30:04 AM

**Electropherogram Summary Continued ...**



**Overall Results for sample 8 : VFLLO14C**

Number of peaks found: 21      Corr. Area 1: 571.7  
 Noise: 1.0


**Peak table for sample 8 : VFLLO14C**

Peak	Size [bp]	Conc. [pg/μl]	Molarity [pmol/l]	Observations
1	35	125.00	5,411.3	Lower Marker
2	195	665.58	5,159.0	
3	198	487.71	3,724.5	
4	207	809.38	5,916.0	
5	220	989.13	6,820.2	
6	236	1,114.14	7,153.5	
7	250	1,777.62	10,794.5	
8	263	1,161.04	6,687.6	
9	271	758.96	4,249.2	
10	295	2,721.45	13,978.4	
11	341	672.25	2,982.7	
12	358	1,130.71	4,789.4	
13	377	1,429.22	5,743.8	
14	405	767.70	2,873.4	
15	439	444.05	1,532.9	
16	451	550.06	1,848.4	
17	470	319.72	1,030.2	
18	494	648.30	1,987.7	
19	540	190.37	534.5	
20	578	186.38	488.3	
21	7,061	4,400.27	944.2	
22	9,320	150.16	24.4	
23	10,380	75.00	10.9	Upper Marker

Assay Class: High Sensitivity DNA Assay  
Data Path: C:\...ents and Settings\Bioanalyzer\2012-12-13\2012-12-13\_002.xad

Created: 12/13/2012 10:25:08 AM  
Modified: 12/13/2012 11:30:04 AM

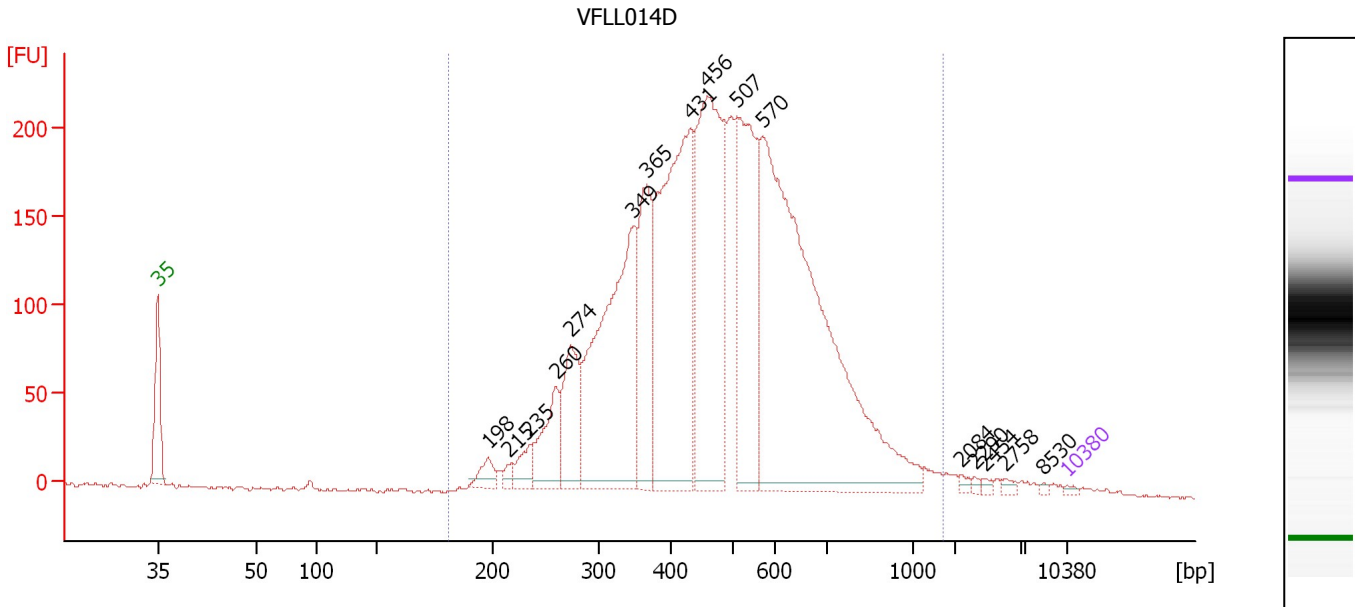
**Electropherogram Summary Continued ...****... Region table for sample 8 : VFLL014C**

<b>From [bp]</b>	<b>To [bp]</b>	<b>Average Size [bp]</b>	<b>Molarity [pmol/l]</b>	<b>Conc. [pg/μl]</b>	<b>Corr. Area</b>	<b>% of Total</b>	<b>Size distribution in CV [%]</b>	<b>Co lor</b>
166	642	330	117,150.2	22,558.77	571.7	72	30.1	

Assay Class: High Sensitivity DNA Assay  
 Data Path: C:\...ents and Settings\Bioanalyzer\2012-12-13\2012-12-13\_002.xad

Created: 12/13/2012 10:25:08 AM  
 Modified: 12/13/2012 11:30:04 AM

**Electropherogram Summary Continued ...**



**Overall Results for sample 9 : VFL014D**

Number of peaks found: 16      Corr. Area 1: 4,057.1  
 Noise: 0.7

**Peak table for sample 9 : VFL014D**

Peak	Size [bp]	Conc. [pg/μl]	Molarity [pmol/l]	Observations
1	35	125.00	5,411.3	Lower Marker
2	198	858.70	6,571.2	
3	215	333.91	2,358.0	
4	235	1,036.63	6,685.8	
5	260	2,934.64	17,099.2	
6	274	3,678.32	20,369.0	
7	349	13,120.36	57,037.1	
8	365	5,758.93	23,906.3	
9	431	14,792.90	52,002.3	
10	456	12,807.30	42,515.5	
11	507	8,581.03	25,623.6	
12	570	24,991.27	66,456.4	
13	2,084	140.32	102.0	
14	2,290	103.44	68.4	
15	2,454	104.55	64.6	
16	2,758	135.40	74.4	
17	8,530	66.87	11.9	
18	10,380	75.00	10.9	Upper Marker

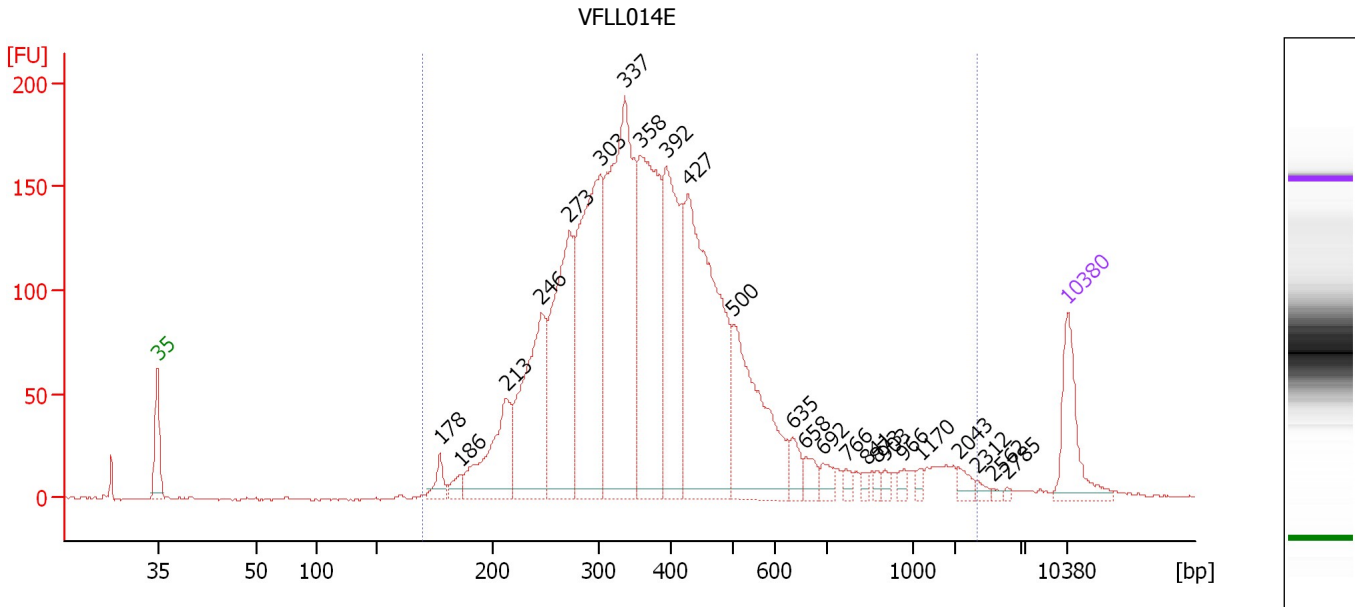
**Region table for sample 9 : VFL014D**

From [bp]	To [bp]	Average Size [bp]	Molarity [pmol/l]	Conc. [pg/μl]	Corr. Area	% of Total	Size distribution in CV [%]	Color
182	1,701	494	334,521.2	93,830.52	4,057.1	98	34.6	Blue

Assay Class: High Sensitivity DNA Assay  
 Data Path: C:\...ents and Settings\Bioanalyzer\2012-12-13\2012-12-13\_002.xad

Created: 12/13/2012 10:25:08 AM  
 Modified: 12/13/2012 11:30:04 AM

**Electropherogram Summary Continued ...**



**Overall Results for sample 10 : VFLLO14E**

Number of peaks found: 24      Corr. Area 1: 3,450.0  
 Noise: 0.5

**Peak table for sample 10 : VFLLO14E**

Peak	Size [bp]	Conc. [pg/μl]	Molarity [pmol/l]	Observations
1	35	125.00	5,411.3	Lower Marker
2	178	31.77	270.9	
3	186	20.12	163.9	
4	213	184.19	1,310.4	
5	246	304.83	1,877.9	
6	273	359.97	1,996.7	
7	303	478.70	2,393.9	
8	337	602.59	2,710.7	
9	358	410.75	1,737.0	
10	392	307.75	1,189.1	
11	427	508.44	1,803.9	
12	500	271.25	822.1	
13	635	27.35	65.3	
14	658	23.54	54.2	
15	692	19.51	42.7	
16	766	11.67	23.1	
17	841	7.51	13.5	
18	873	7.50	13.0	
19	903	9.23	15.5	
20	966	9.08	14.3	
21	1,170	7.38	9.6	
22	2,043	13.51	10.0	
23	2,312	6.05	4.0	
24	2,562	3.35	2.0	
25	2,785	2.58	1.4	
26	10,380	75.00	10.9	Upper Marker

Assay Class: High Sensitivity DNA Assay  
Data Path: C:\...ents and Settings\Bioanalyzer\2012-12-13\2012-12-13\_002.xad

Created: 12/13/2012 10:25:08 AM  
Modified: 12/13/2012 11:30:04 AM

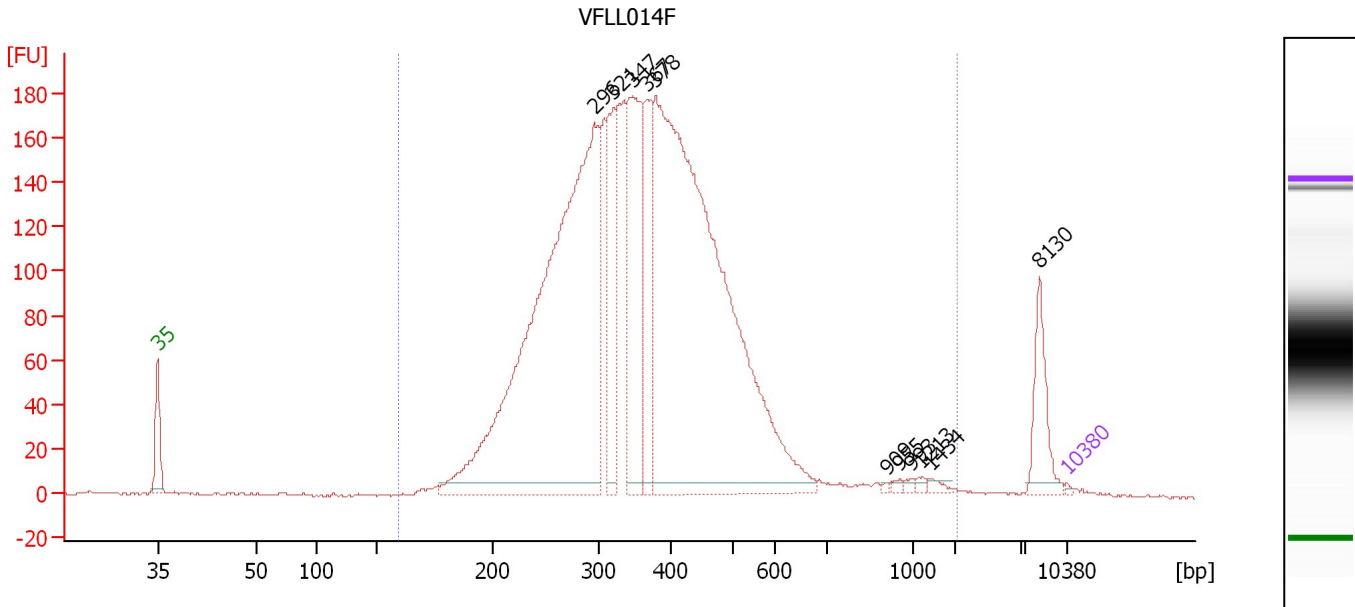
**Electropherogram Summary Continued ...****... Region table for sample 10 : VFL014E**

<b>From [bp]</b>	<b>To [bp]</b>	<b>Average Size [bp]</b>	<b>Molarity [pmol/l]</b>	<b>Conc. [pg/μl]</b>	<b>Corr. Area</b>	<b>% of Total</b>	<b>Size distribution in CV [%]</b>	<b>Co lor</b>
170	2,330	417	16,522.0	3,661.85	3,450.0	98	61.4	

Assay Class: High Sensitivity DNA Assay  
 Data Path: C:\...ents and Settings\Bioanalyzer\2012-12-13\2012-12-13\_002.xad

Created: 12/13/2012 10:25:08 AM  
 Modified: 12/13/2012 11:30:04 AM

**Electropherogram Summary Continued ...**



**Overall Results for sample 11 : VFLLO14F**

Number of peaks found: 11                      Corr. Area 1: 3,601.4  
 Noise: 0.5

**Peak table for sample 11 : VFLLO14F**

Peak	Size [bp]	Conc. [pg/μl]	Molarity [pmol/l]	Observations
1	35	125.00	5,411.3	Lower Marker
2	296	53,440.74	273,333.3	
3	321	7,145.80	33,719.5	
4	347	11,439.12	49,984.4	
5	367	6,753.83	27,898.7	
6	378	55,520.54	222,533.5	
7	909	95.18	158.6	
8	955	185.97	295.0	
9	993	164.35	250.9	
10	1,213	175.24	218.9	
11	1,434	268.01	283.2	
12	8,130	2,738.30	510.3	
13	10,380	75.00	10.9	Upper Marker

**Region table for sample 11 : VFLLO14F**

From [bp]	To [bp]	Average Size [bp]	Molarity [pmol/l]	Conc. [pg/μl]	Corr. Area	% of Total	Size distribution in CV [%]	Color
160	2,020	376	704,980.1	152,487.75	3,601.4	96	40.6	Blue

Assay Class: High Sensitivity DNA Assay  
Data Path: C:\...ents and Settings\Bioanalyzer\2012-12-13\2012-12-13\_002.xad

Created: 12/13/2012 10:25:08 AM  
Modified: 12/13/2012 11:30:04 AM

**Gel Image**

