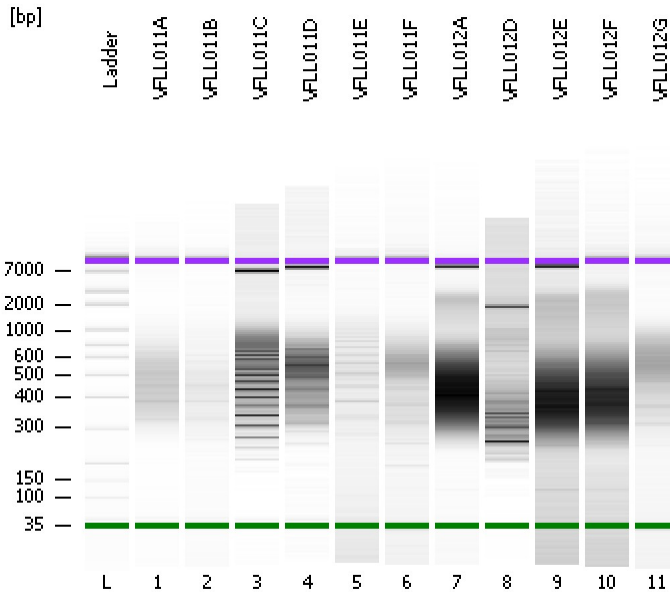


Assay Class: High Sensitivity DNA Assay
Data Path: C:\...ents and Settings\Bioanalyzer\2012-12-13\2012-12-13_003.xad

Created: 12/13/2012 11:08:18 AM
Modified: 12/13/2012 11:50:07 AM

Electrophoresis File Run Summary



Instrument Information:

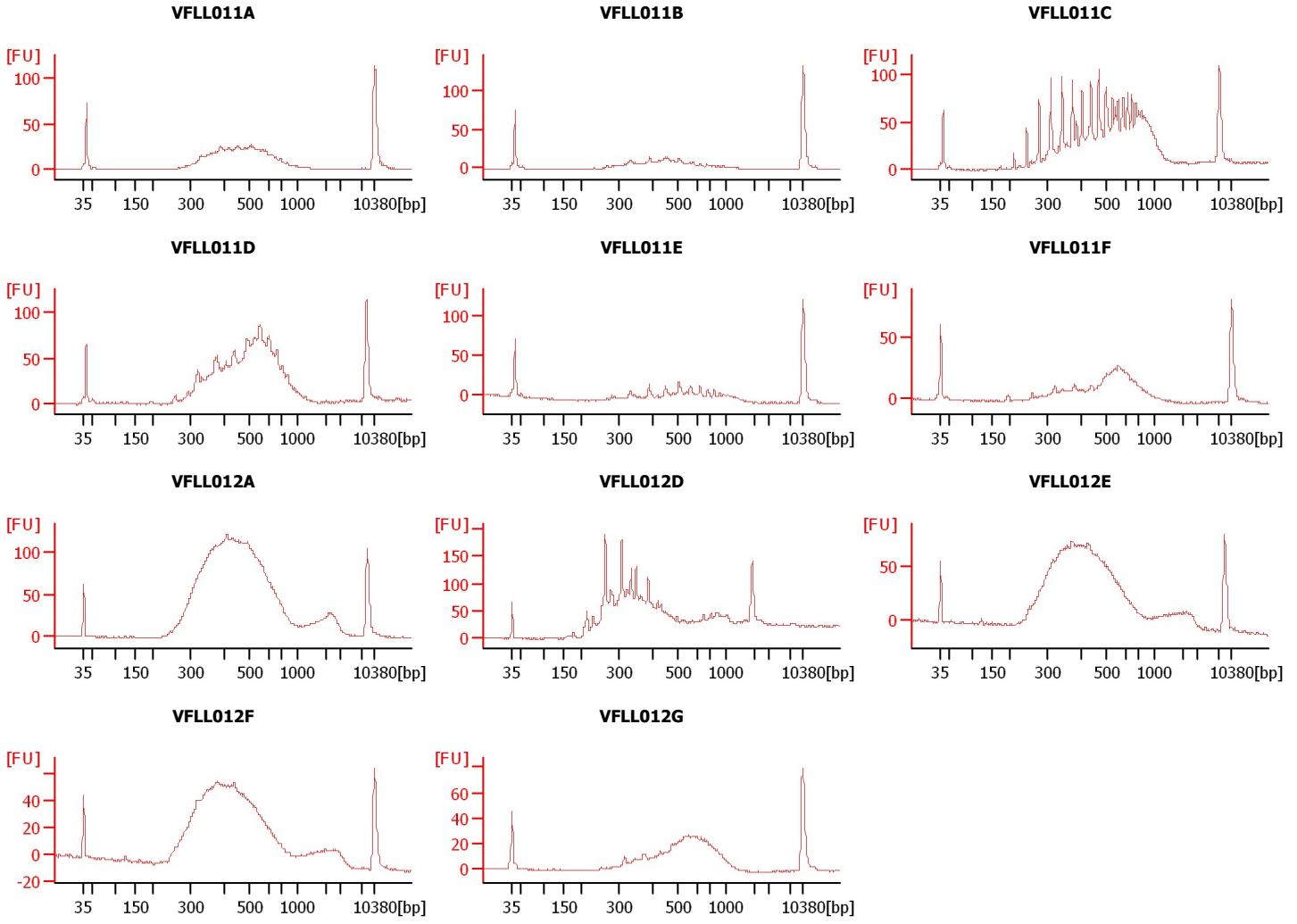
Instrument Name: DE13701086 Firmware: C.01.069
Serial#: DE13701086 Type: G2938B

Assay Information:

Assay Origin Path: C:\Program Files\Agilent\2100 bioanalyzer\2100 expert\assays\dsDNA\High Sensitivity DNA.xsy
Assay Class: High Sensitivity DNA Assay
Version: 1.03
Assay Comments: Copyright © 2003-2010 Agilent Technologies

Chip Information:

Chip Lot #:
Reagent Kit Lot #:
Chip Comments:



Assay Class: High Sensitivity DNA Assay
 Data Path: C:\...ents and Settings\Bioanalyzer\2012-12-13\2012-12-13_003.xad

Created: 12/13/2012 11:08:18 AM
 Modified: 12/13/2012 11:50:07 AM

Electrophoresis File Run Summary (Chip Summary)

Sample Name	Sample Comment	Rest. Digest	Status	Observation	Result Label	Result Color
VFLL011A		<input type="checkbox"/>	✓			
VFLL011B		<input type="checkbox"/>	✓			
VFLL011C		<input type="checkbox"/>	✓			
VFLL011D		<input type="checkbox"/>	✓			
VFLL011E		<input type="checkbox"/>	✓			
VFLL011F		<input type="checkbox"/>	✓			
VFLL012A		<input type="checkbox"/>	✓			
VFLL012D		<input type="checkbox"/>	✓			
VFLL012E		<input type="checkbox"/>	✓			
VFLL012F		<input type="checkbox"/>	✓			
VFLL012G		<input type="checkbox"/>	✓			
Ladder		<input type="checkbox"/>	✓			

Chip Lot #

Reagent Kit Lot #

Chip Comments :

Assay Class: High Sensitivity DNA Assay
Data Path: C:\...ents and Settings\Bioanalyzer\2012-12-13\2012-12-13_003.xad

Created: 12/13/2012 11:08:18 AM
Modified: 12/13/2012 11:50:07 AM

Electrophoresis Assay Details

General Analysis Settings

Number of Available Sample and Ladder Wells (Max.) : 12
Minimum Visible Range [s] : 32
Maximum Visible Range [s] : 138
Start Analysis Time Range [s] : 33
End Analysis Time Range [s] : 137.5
Ladder Concentration [pg/μl] : 1950
Uses Standard Area for Ladder Fragments
Lower Marker Concentration [pg/μl] : 125
Upper Marker Concentration [pg/μl] : 75
Used Upper Marker for Quantitation
Standard Curve Fit is Point to Point
Show Data Aligned to Lower and Upper Marker

Integrator Settings

Integration Start Time [s] : 33.05
Integration End Time [s] : 137
Slope Threshold : 0.8
Height Threshold [FU] : 5
Area Threshold : 0.1
Width Threshold [s] : 0.6
Baseline Plateau [s] : 0.5

Filter Settings

Filter Width [s] : 0.5
Polynomial Order : 4

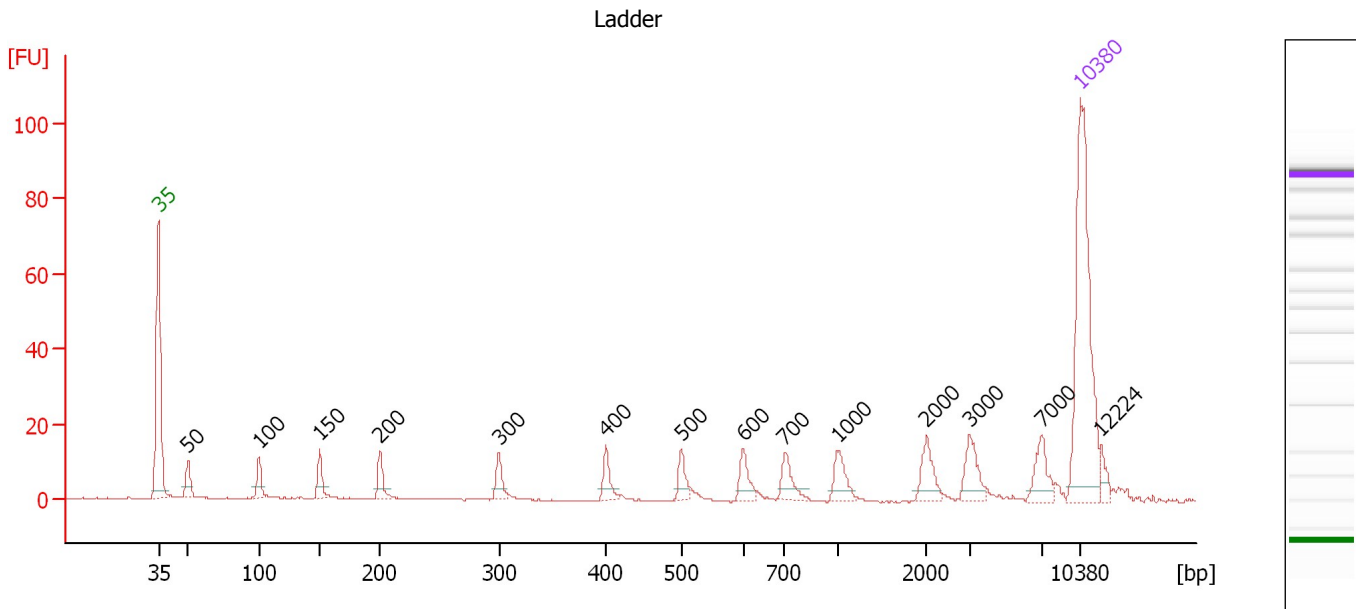
Ladder

Ladder Peak	Size	Area
1	35	160
2	50	210
3	100	208
4	150	221
5	200	242
6	300	270
7	400	305
8	500	306
9	600	336
10	700	321
11	1000	366
12	2000	413
13	3000	411
14	7000	400
15	10380	214

Assay Class: High Sensitivity DNA Assay
 Data Path: C:\...ents and Settings\Bioanalyzer\2012-12-13\2012-12-13_003.xad

Created: 12/13/2012 11:08:18 AM
 Modified: 12/13/2012 11:50:07 AM

Electropherogram Summary



Overall Results for Ladder

Noise: 0.1

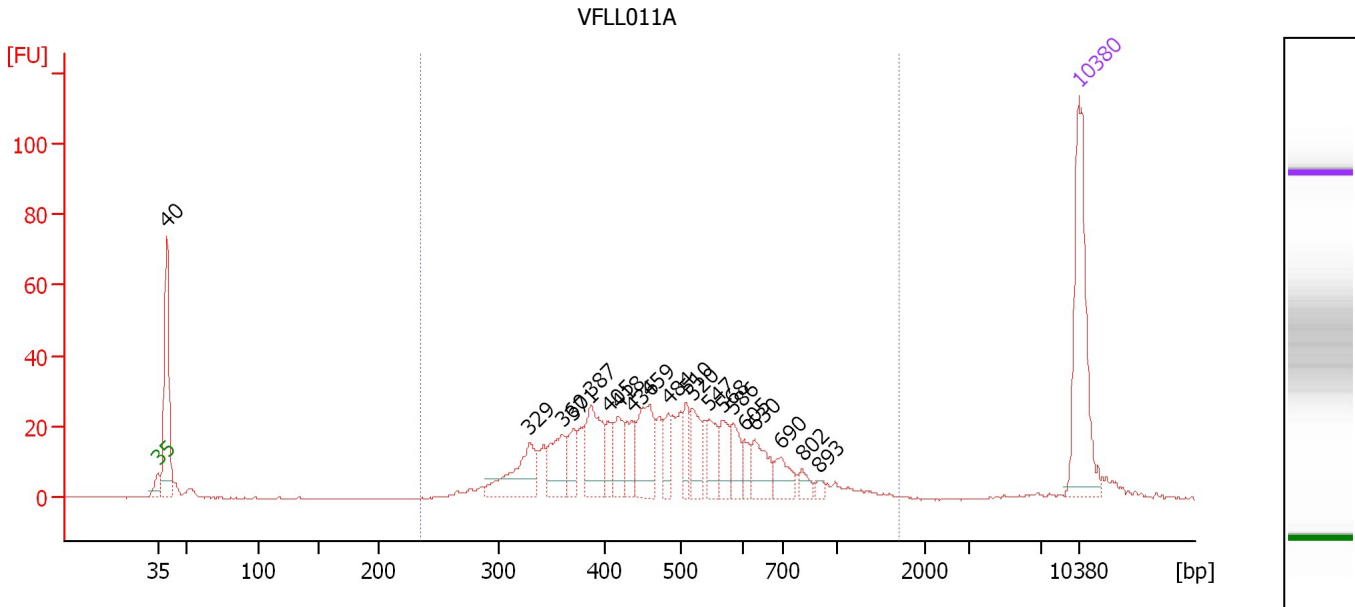
Peak table for Ladder

Peak	Size [bp]	Conc. [pg/μl]	Molarity [pmol/l]	Observations
1	35	125.00	5,411.3	Lower Marker
2	50	150.00	4,545.5	Ladder Peak
3	100	150.00	2,272.7	Ladder Peak
4	150	150.00	1,515.2	Ladder Peak
5	200	150.00	1,136.4	Ladder Peak
6	300	150.00	757.6	Ladder Peak
7	400	150.00	568.2	Ladder Peak
8	500	150.00	454.5	Ladder Peak
9	600	150.00	378.8	Ladder Peak
10	700	150.00	324.7	Ladder Peak
11	1,000	150.00	227.3	Ladder Peak
12	2,000	150.00	113.6	Ladder Peak
13	3,000	150.00	75.8	Ladder Peak
14	7,000	150.00	32.5	Ladder Peak
15	10,380	75.00	10.9	Upper Marker
16	12,224	0.00	0.0	

Assay Class: High Sensitivity DNA Assay
 Data Path: C:\...ents and Settings\Bioanalyzer\2012-12-13\2012-12-13_003.xad

Created: 12/13/2012 11:08:18 AM
 Modified: 12/13/2012 11:50:07 AM

Electropherogram Summary Continued ...



Overall Results for sample 1 : VFL011A

Number of peaks found: 20 Corr. Area 1: 591.6
 Noise: 0.1

Peak table for sample 1 : VFL011A

Peak	Size [bp]	Conc. [pg/μl]	Molarity [pmol/l]	Observations
1	35	125.00	5,411.3	Lower Marker
2	40	116.14	4,425.9	
3	329	50.11	230.5	
4	360	34.67	145.8	
5	371	22.09	90.3	
6	387	49.77	194.7	
7	405	16.34	61.1	
8	418	23.27	84.3	
9	436	22.30	77.5	
10	459	46.50	153.3	
11	484	17.81	55.7	
12	510	17.85	53.0	
13	520	26.19	76.3	
14	547	22.73	62.9	
15	568	19.69	52.5	
16	586	20.14	52.1	
17	605	11.16	27.9	
18	630	24.21	58.2	
19	690	17.39	38.2	
20	802	7.61	14.4	
21	893	3.86	6.5	
22	10,380	75.00	10.9	Upper Marker

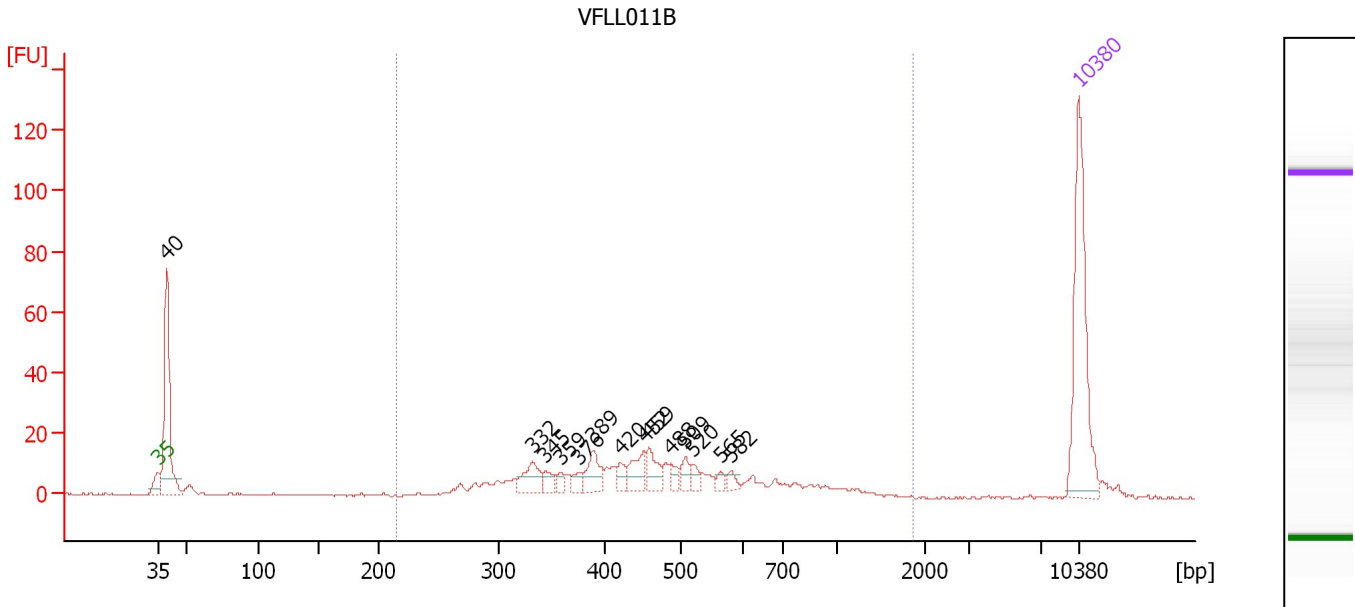
Region table for sample 1 : VFL011A

From [bp]	To [bp]	Average Size [bp]	Molarity [pmol/l]	Conc. [pg/μl]	Corr. Area	% of Total	Size distribution in CV [%]	Color
235	1,695	501	1,934.9	569.97	591.6	84	34.6	Blue

Assay Class: High Sensitivity DNA Assay
 Data Path: C:\...ents and Settings\Bioanalyzer\2012-12-13\2012-12-13_003.xad

Created: 12/13/2012 11:08:18 AM
 Modified: 12/13/2012 11:50:07 AM

Electropherogram Summary Continued ...



Overall Results for sample 2 : VFL011B

Number of peaks found: 14 Corr. Area 1: 290.9
 Noise: 0.3

Peak table for sample 2 : VFL011B

Peak	Size [bp]	Conc. [pg/μl]	Molarity [pmol/l]	Observations
1	35	125.00	5,411.3	Lower Marker
2	40	120.51	4,612.9	
3	332	20.64	94.1	
4	345	7.39	32.5	
5	359	5.18	21.9	
6	376	6.74	27.2	
7	389	18.60	72.4	
8	420	8.62	31.1	
9	452	17.00	57.0	
10	459	15.63	51.6	
11	488	6.75	21.0	
12	509	8.60	25.6	
13	520	6.07	17.7	
14	565	3.89	10.4	
15	582	4.57	11.9	
16	10,380	75.00	10.9	Upper Marker

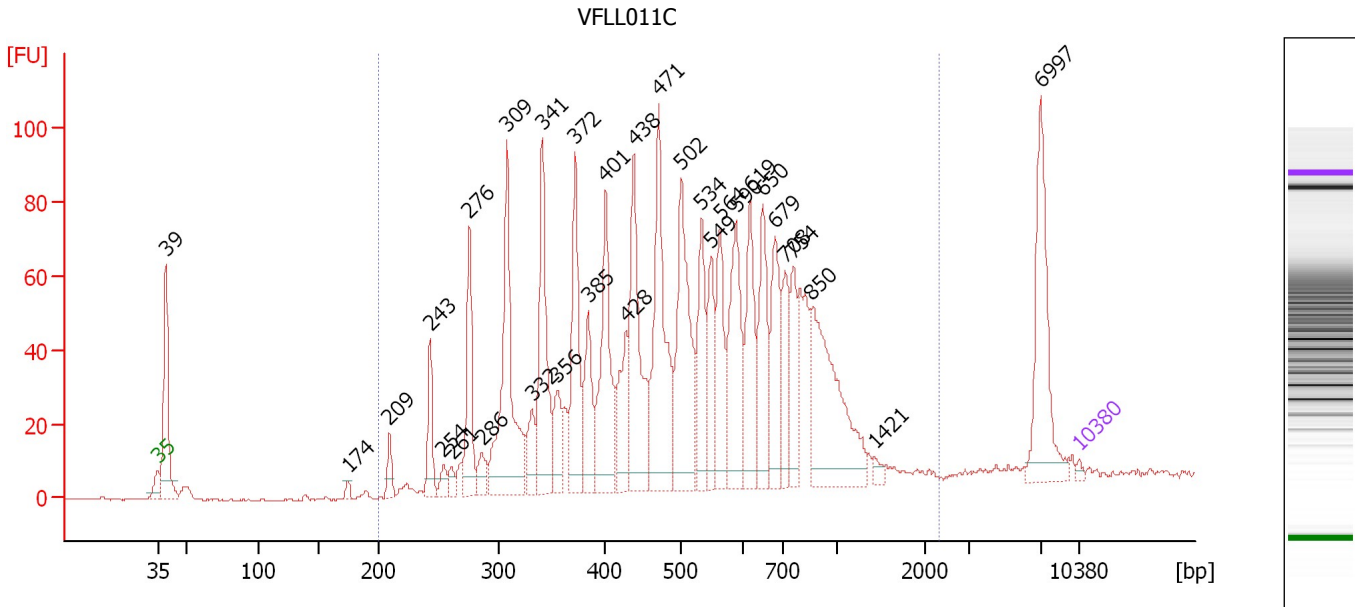
Region table for sample 2 : VFL011B

From [bp]	To [bp]	Average Size [bp]	Molarity [pmol/l]	Conc. [pg/μl]	Corr. Area	% of Total	Size distribution in CV [%]	Color
214	1,851	502	923.9	260.65	290.9	73	42.8	Blue

Assay Class: High Sensitivity DNA Assay
 Data Path: C:\...ents and Settings\Bioanalyzer\2012-12-13\2012-12-13_003.xad

Created: 12/13/2012 11:08:18 AM
 Modified: 12/13/2012 11:50:07 AM

Electropherogram Summary Continued ...



Overall Results for sample 3 : VFLLO11C

Number of peaks found: 31 Corr. Area 1: 1,708.2
 Noise: 0.2

Peak table for sample 3 : VFLLO11C

Peak	Size [bp]	Conc. [pg/μl]	Molarity [pmol/l]	Observations
1	35	125.00	5,411.3	Lower Marker
2	39	4,421.24	170,865.5	
3	174	178.03	1,550.3	
4	209	565.56	4,106.6	
5	243	1,383.60	8,631.7	
6	254	363.41	2,165.5	
7	261	307.05	1,781.1	
8	276	2,438.67	13,383.7	
9	286	608.57	3,218.5	
10	309	5,573.51	27,363.6	
11	332	964.68	4,400.7	
12	341	3,973.67	17,633.3	
13	356	1,156.04	4,924.8	
14	372	3,159.90	12,867.5	
15	385	1,889.16	7,441.2	
16	401	3,685.11	13,932.3	
17	428	1,699.17	6,013.2	
18	438	4,239.48	14,655.1	
19	471	4,989.85	16,046.2	
20	502	4,581.52	13,827.6	
21	534	2,204.27	6,252.7	
22	549	1,733.70	4,782.6	
23	564	2,062.14	5,536.3	
24	590	3,237.03	8,314.8	
25	619	2,530.98	6,198.0	
26	650	2,366.22	5,517.9	

Assay Class: High Sensitivity DNA Assay
 Data Path: C:\...ents and Settings\Bioanalyzer\2012-12-13\2012-12-13_003.xad


Created: 12/13/2012 11:08:18 AM
 Modified: 12/13/2012 11:50:07 AM

Electropherogram Summary Continued ...

... Peak table for sample 3 : VFLLO11C

Peak	Size [bp]	Conc. [pg/μl]	Molarity [pmol/l]	Observations
27	679	2,264.76	5,051.1	
28	708	1,520.32	3,254.5	
29	754	1,585.42	3,185.9	
30	850	4,851.83	8,651.3	
31	1,421	207.36	221.1	
32	6,997	3,046.16	659.6	
33	▶ 10,380	75.00	10.9	Upper Marker

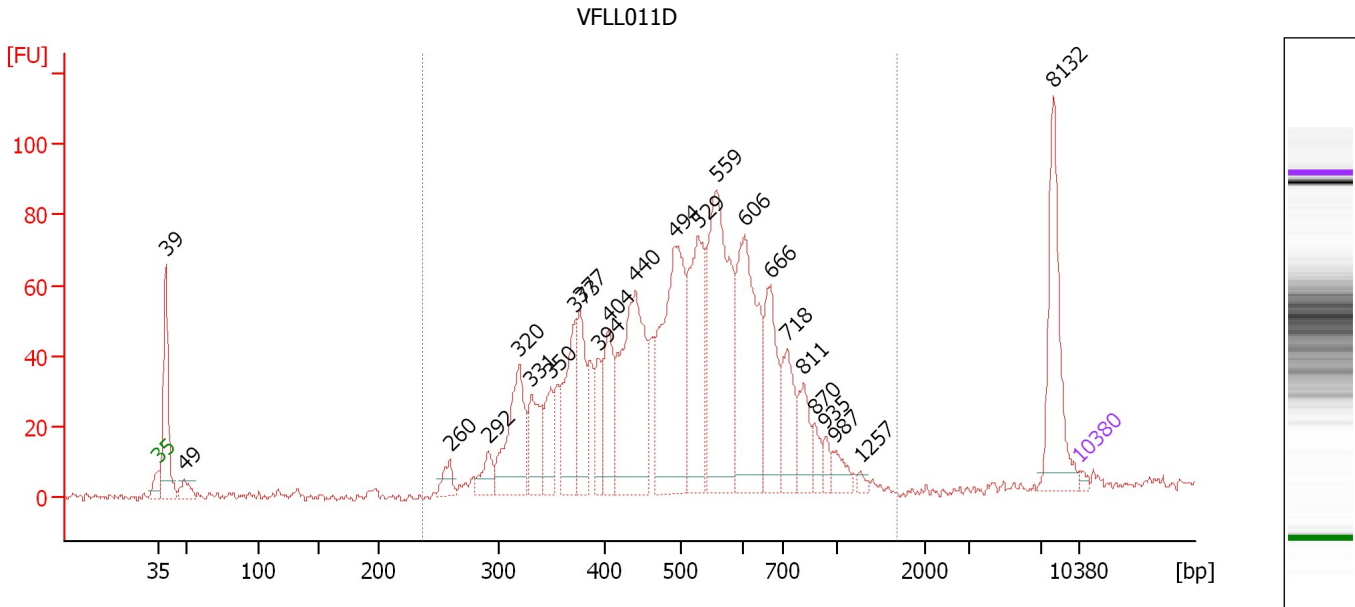
Region table for sample 3 : VFLLO11C

From [bp]	To [bp]	Average Size [bp]	Molarity [pmol/l]	Conc. [pg/μl]	Corr. Area	% of Total	Size distribution in CV [%]	Color
200	2,300	556	224,828.8	66,985.73	1,708.2	89	43.7	

Assay Class: High Sensitivity DNA Assay
 Data Path: C:\...ents and Settings\Bioanalyzer\2012-12-13\2012-12-13_003.xad

Created: 12/13/2012 11:08:18 AM
 Modified: 12/13/2012 11:50:07 AM

Electropherogram Summary Continued ...



Overall Results for sample 4 : VFLLO11D

Number of peaks found: 24 Corr. Area 1: 1,475.6
 Noise: 1.1

Peak table for sample 4 : VFLLO11D

Peak	Size [bp]	Conc. [pg/μl]	Molarity [pmol/l]	Observations
1	35	125.00	5,411.3	Lower Marker
2	39	3,365.39	129,451.0	
3	49	436.08	13,540.2	
4	260	459.26	2,679.5	
5	292	632.58	3,279.1	
6	320	2,610.66	12,359.1	
7	331	1,396.50	6,383.3	
8	350	1,038.98	4,500.9	
9	373	1,912.27	7,776.1	
10	377	1,681.34	6,764.5	
11	394	911.23	3,506.6	
12	404	1,468.88	5,507.4	
13	440	4,478.12	15,419.3	
14	494	5,233.31	16,053.4	
15	529	3,420.56	9,794.2	
16	559	5,363.03	14,543.1	
17	606	4,061.41	10,152.6	
18	666	2,028.48	4,611.5	
19	718	1,431.13	3,020.0	
20	811	860.03	1,606.6	
21	870	381.94	665.5	
22	935	262.08	424.7	
23	987	367.01	563.5	
24	1,257	101.73	122.6	
25	8,132	2,145.91	399.8	
26	10,380	75.00	10.9	Upper Marker

Assay Class: High Sensitivity DNA Assay
Data Path: C:\...ents and Settings\Bioanalyzer\2012-12-13\2012-12-13_003.xad

Created: 12/13/2012 11:08:18 AM
Modified: 12/13/2012 11:50:07 AM

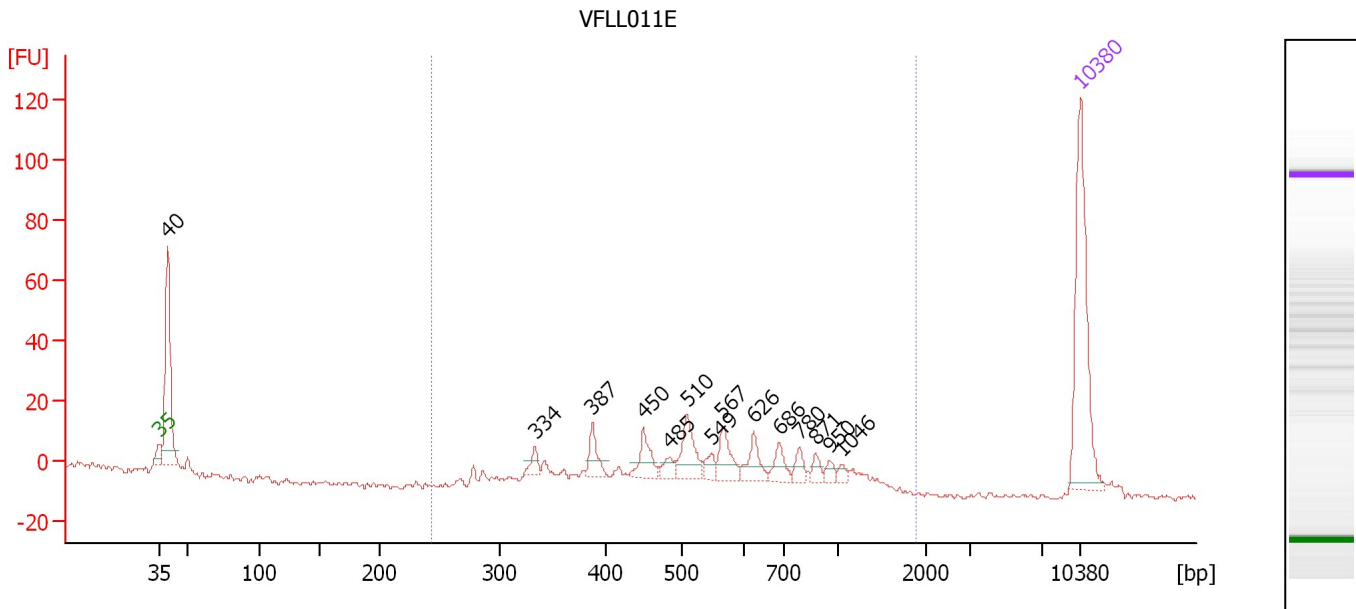
Electropherogram Summary Continued ...**... Region table for sample 4 : VFLL011D**

From [bp]	To [bp]	Average Size [bp]	Molarity [pmol/l]	Conc. [pg/μl]	Corr. Area	% of Total	Size distribution in CV [%]	Co lor
237	1,665	520	136,677.3	42,006.29	1,475.6	88	29.6	■

Assay Class: High Sensitivity DNA Assay
 Data Path: C:\...ents and Settings\Bioanalyzer\2012-12-13\2012-12-13_003.xad

Created: 12/13/2012 11:08:18 AM
 Modified: 12/13/2012 11:50:07 AM

Electropherogram Summary Continued ...



Overall Results for sample 5 : VFLLO11E

Number of peaks found: 14 Corr. Area 1: 211.2
 Noise: 0.6

Peak table for sample 5 : VFLLO11E

Peak	Size [bp]	Conc. [pg/μl]	Molarity [pmol/l]	Observations
1	35	125.00	5,411.3	Lower Marker
2	40	111.75	4,274.4	
3	334	7.97	36.1	
4	387	14.54	56.9	
5	450	17.74	59.8	
6	485	7.29	22.8	
7	510	26.39	78.4	
8	549	7.80	21.5	
9	567	17.93	47.9	
10	626	15.56	37.7	
11	686	11.58	25.6	
12	780	7.56	14.7	
13	871	5.83	10.2	
14	950	4.47	7.1	
15	1,046	3.86	5.6	
16	10,380	75.00	10.9	Upper Marker

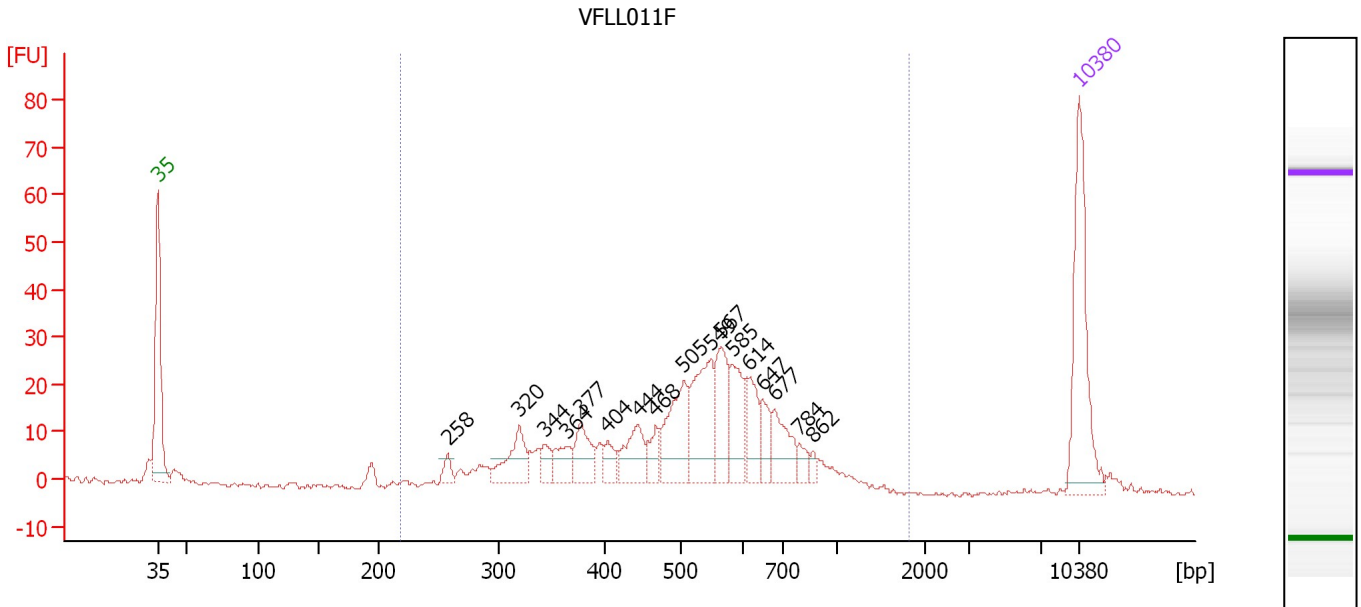
Region table for sample 5 : VFLLO11E

From [bp]	To [bp]	Average Size [bp]	Molarity [pmol/l]	Conc. [pg/μl]	Corr. Area	% of Total	Size distribution in CV [%]	Color
243	1,874	614	531.6	184.96	211.2	70	37.4	Blue

Assay Class: High Sensitivity DNA Assay
 Data Path: C:\...ents and Settings\Bioanalyzer\2012-12-13\2012-12-13_003.xad

Created: 12/13/2012 11:08:18 AM
 Modified: 12/13/2012 11:50:07 AM

Electropherogram Summary Continued ...



Overall Results for sample 6 : VFLLO11F

Number of peaks found: 17 Corr. Area 1: 461.1
 Noise: 0.4

Peak table for sample 6 : VFLLO11F

Peak	Size [bp]	Conc. [pg/μl]	Molarity [pmol/l]	Observations
1	35	125.00	5,411.3	Lower Marker
2	258	9.21	54.0	
3	320	36.75	173.9	
4	344	13.84	61.0	
5	364	18.89	78.7	
6	377	29.42	118.2	
7	404	12.51	47.0	
8	444	31.73	108.3	
9	468	15.67	50.8	
10	505	56.62	169.7	
11	549	66.93	184.8	
12	567	42.10	112.5	
13	585	36.26	93.9	
14	614	27.53	67.9	
15	647	20.14	47.1	
16	677	31.20	69.8	
17	784	8.40	16.2	
18	862	4.68	8.2	
19	10,380	75.00	10.9	Upper Marker

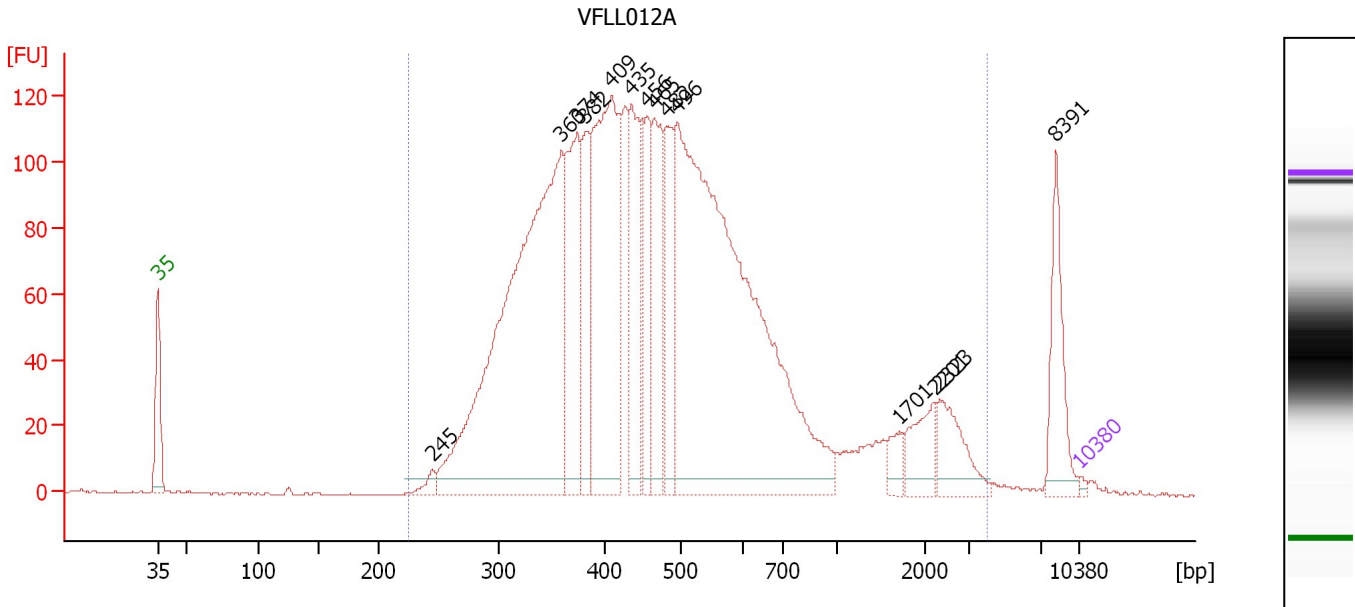
Region table for sample 6 : VFLLO11F

From [bp]	To [bp]	Average Size [bp]	Molarity [pmol/l]	Conc. [pg/μl]	Corr. Area	% of Total	Size distribution in CV [%]	Color
218	1,807	538	1,896.5	585.84	461.1	94	32.7	Blue

Assay Class: High Sensitivity DNA Assay
 Data Path: C:\...ents and Settings\Bioanalyzer\2012-12-13\2012-12-13_003.xad

Created: 12/13/2012 11:08:18 AM
 Modified: 12/13/2012 11:50:07 AM

Electropherogram Summary Continued ...



Overall Results for sample 7 : VFLLO12A

Number of peaks found: 14 Corr. Area 1: 3,070.0
 Noise: 0.3

Peak table for sample 7 : VFLLO12A

Peak	Size [bp]	Conc. [pg/μl]	Molarity [pmol/l]	Observations
1	35	125.00	5,411.3	Lower Marker
2	245	435.24	2,695.5	
3	360	25,599.21	107,875.5	
4	374	5,974.85	24,198.8	
5	382	3,516.81	13,949.6	
6	409	11,620.88	43,059.3	
7	435	4,949.44	17,242.8	
8	456	3,125.14	10,390.4	
9	465	4,472.14	14,564.1	
10	482	3,459.58	10,881.4	
11	496	30,149.37	92,014.2	
12	1,701	622.17	554.3	
13	2,201	1,372.15	944.4	
14	2,323	1,677.89	1,094.4	
15	8,391	2,375.94	429.0	
16	10,380	75.00	10.9	Upper Marker

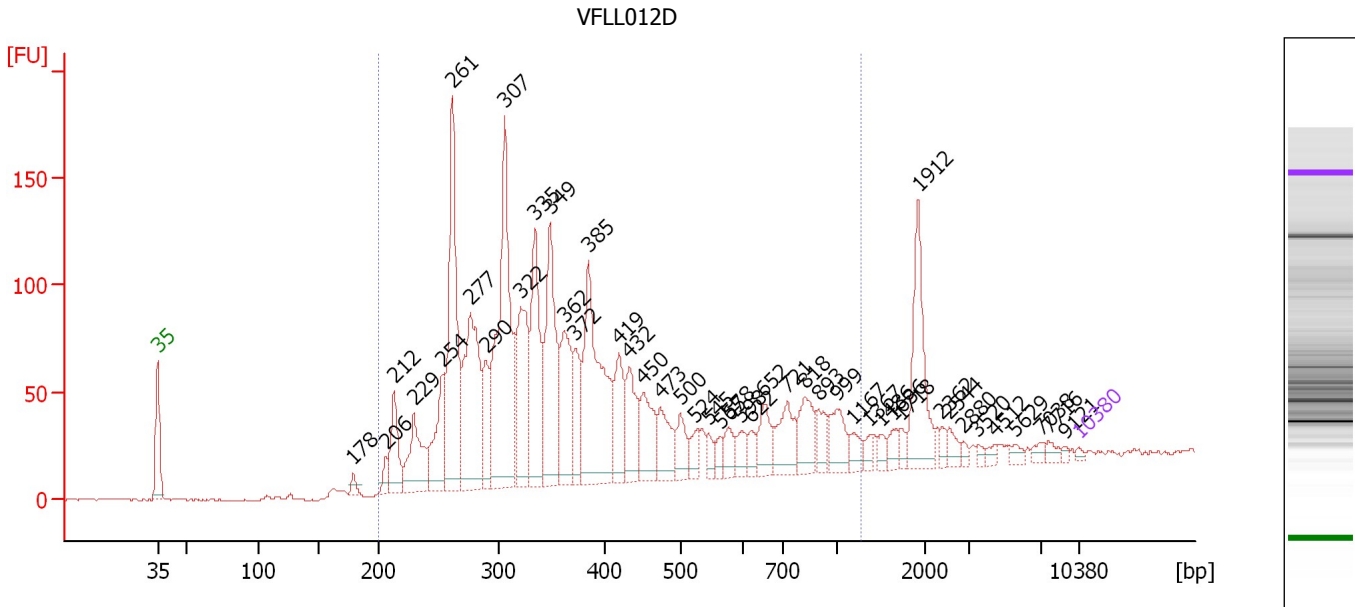
Region table for sample 7 : VFLLO12A

From [bp]	To [bp]	Average Size [bp]	Molarity [pmol/l]	Conc. [pg/μl]	Corr. Area	% of Total	Size distribution in CV [%]	Color
225	4,087	591	359,267.4	102,713.46	3,070.0	96	82.3	Blue

Assay Class: High Sensitivity DNA Assay
 Data Path: C:\...ents and Settings\Bioanalyzer\2012-12-13\2012-12-13_003.xad

Created: 12/13/2012 11:08:18 AM
 Modified: 12/13/2012 11:50:07 AM

Electropherogram Summary Continued ...



Overall Results for sample 8 : VFLLO12D

Number of peaks found: 46 Corr. Area 1: 2,389.2
 Noise: 0.4

Peak table for sample 8 : VFLLO12D

Peak	Size [bp]	Conc. [pg/μl]	Molarity [pmol/l]	Observations
1	35	125.00	5,411.3	Lower Marker
2	178	318.65	2,710.6	
3	206	493.94	3,636.9	
4	212	1,990.09	14,200.6	
5	229	2,635.78	17,424.7	
6	254	2,768.21	16,512.3	
7	261	7,228.31	41,881.5	
8	277	5,892.58	32,237.3	
9	290	1,807.98	9,444.1	
10	307	9,193.61	45,432.6	
11	322	3,922.71	18,481.6	
12	335	4,170.27	18,859.9	
13	349	5,018.54	21,788.6	
14	362	3,025.31	12,665.8	
15	372	1,664.18	6,773.8	
16	385	6,418.85	25,284.5	
17	419	1,871.57	6,772.9	
18	432	1,905.38	6,682.9	
19	450	1,845.98	6,209.1	
20	473	1,554.97	4,977.2	
21	500	913.69	2,768.9	
22	524	580.51	1,678.4	
23	545	419.77	1,166.0	
24	565	368.18	987.2	
25	578	669.66	1,756.7	
26	598	549.05	1,390.9	

Assay Class: High Sensitivity DNA Assay
 Data Path: C:\...ents and Settings\Bioanalyzer\2012-12-13\2012-12-13_003.xad


Created: 12/13/2012 11:08:18 AM
 Modified: 12/13/2012 11:50:07 AM

Electropherogram Summary Continued ...

... Peak table for sample 8 : VFLLO12D

Peak	Size [bp]	Conc. [pg/µl]	Molarity [pmol/l]	Observations
27	622	474.84	1,155.8	
28	652	1,120.08	2,603.7	
29	721	1,459.49	3,066.0	
30	818	1,363.01	2,524.9	
31	893	690.85	1,172.5	
32	999	1,096.16	1,662.9	
33	1,167	471.17	611.9	
34	1,367	250.74	277.9	
35	1,486	279.83	285.3	
36	1,636	391.72	362.7	
37	1,718	233.72	206.1	
38	1,912	2,658.09	2,106.4	
39	2,362	220.92	141.7	
40	2,544	312.73	186.3	
41	2,880	152.71	80.3	
42	3,520	123.79	53.3	
43	4,512	182.69	61.3	
44	5,629	199.81	53.8	
45	7,038	196.80	42.4	
46	7,716	193.19	37.9	
47	9,121	82.40	13.7	
48	▶ 10,380	75.00	10.9	Upper Marker

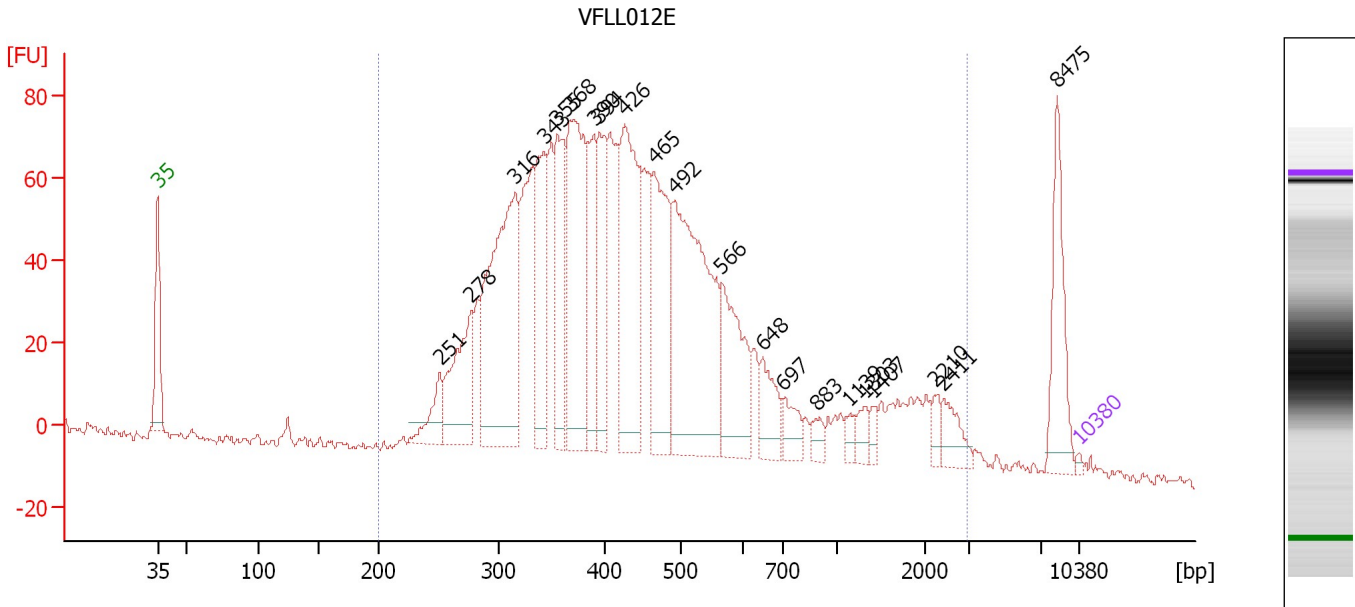
Region table for sample 8 : VFLLO12D

From [bp]	To [bp]	Average Size [bp]	Molarity [pmol/l]	Conc. [pg/µl]	Corr. Area	% of Total	Size distribution in CV [%]	Color
200	1,268	417	314,711.8	71,278.97	2,389.2	88	46.5	

Assay Class: High Sensitivity DNA Assay
 Data Path: C:\...ents and Settings\Bioanalyzer\2012-12-13\2012-12-13_003.xad

Created: 12/13/2012 11:08:18 AM
 Modified: 12/13/2012 11:50:07 AM

Electropherogram Summary Continued ...



Overall Results for sample 9 : VFLLO12E

Number of peaks found: 21 Corr. Area 1: 2,055.4
 Noise: 1.4


Peak table for sample 9 : VFLLO12E

Peak	Size [bp]	Conc. [pg/μl]	Molarity [pmol/l]	Observations
1	35	125.00	5,411.3	Lower Marker
2	251	1,445.35	8,721.4	
3	278	4,085.04	22,274.0	
4	316	10,414.64	49,997.7	
5	343	4,365.85	19,267.4	
6	355	4,044.05	17,259.0	
7	368	7,648.53	31,494.8	
8	390	3,107.39	12,087.4	
9	394	3,326.15	12,776.8	
10	426	7,089.79	25,193.6	
11	465	5,610.05	18,274.9	
12	492	10,062.96	30,963.4	
13	566	3,731.63	9,983.6	
14	648	1,500.55	3,507.8	
15	697	916.10	1,990.4	
16	883	430.42	738.3	
17	1,139	302.92	403.1	
18	1,303	494.97	575.6	
19	1,407	320.19	344.7	
20	2,210	426.29	292.3	
21	2,411	852.12	535.6	
22	8,475	2,496.68	446.3	
23	10,380	75.00	10.9	Upper Marker

Assay Class: High Sensitivity DNA Assay
Data Path: C:\...ents and Settings\Bioanalyzer\2012-12-13\2012-12-13_003.xad

Created: 12/13/2012 11:08:18 AM
Modified: 12/13/2012 11:50:07 AM

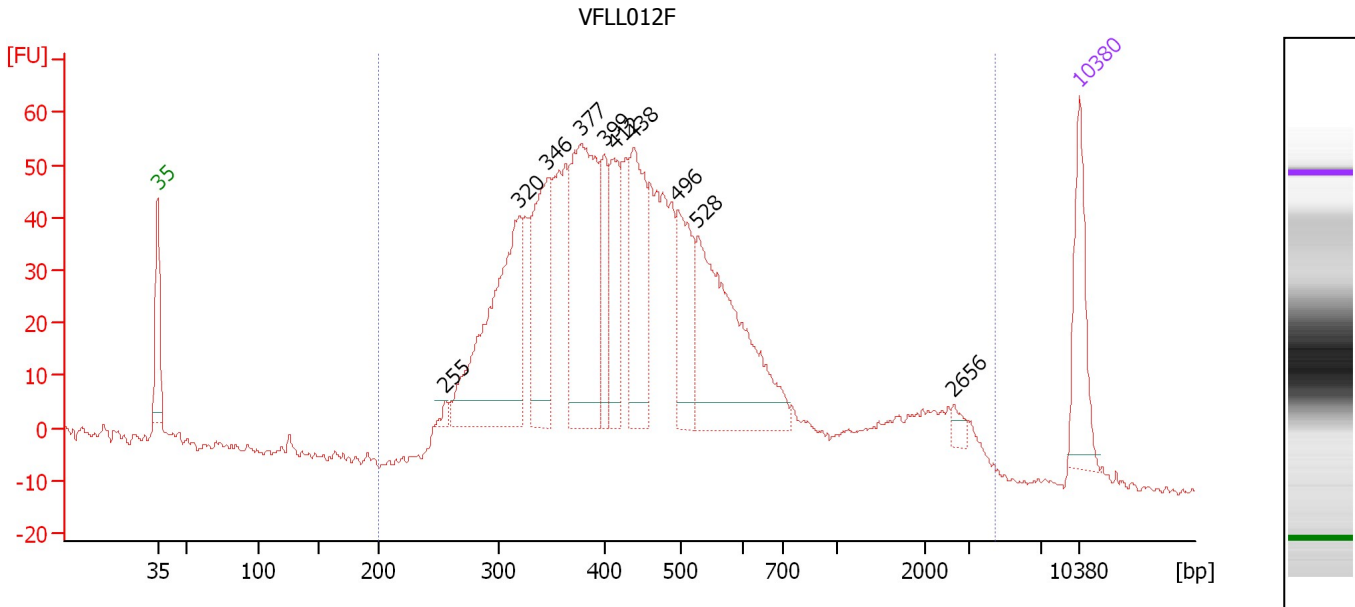
Electropherogram Summary Continued ...**... Region table for sample 9 : VFLL012E**

From [bp]	To [bp]	Average Size [bp]	Molarity [pmol/l]	Conc. [pg/μl]	Corr. Area	% of Total	Size distribution in CV [%]	Co lor
200	2,984	556	335,569.1	89,918.68	2,055.4	95	79.9	

Assay Class: High Sensitivity DNA Assay
 Data Path: C:\...ents and Settings\Bioanalyzer\2012-12-13\2012-12-13_003.xad

Created: 12/13/2012 11:08:18 AM
 Modified: 12/13/2012 11:50:07 AM

Electropherogram Summary Continued ...



Overall Results for sample 10 : VFL012F

Number of peaks found: 10 Corr. Area 1: 1,472.9
 Noise: 0.5

Peak table for sample 10 : VFL012F

Peak	Size [bp]	Conc. [pg/μl]	Molarity [pmol/l]	Observations
1	35	125.00	5,411.3	Lower Marker
2	255	7.85	46.7	
3	320	318.94	1,511.5	
4	346	173.59	759.2	
5	377	284.64	1,144.0	
6	399	82.65	313.6	
7	412	92.76	341.4	
8	438	151.97	525.6	
9	496	117.92	360.0	
10	528	285.00	817.1	
11	2,656	9.43	5.4	
12	10,380	75.00	10.9	Upper Marker

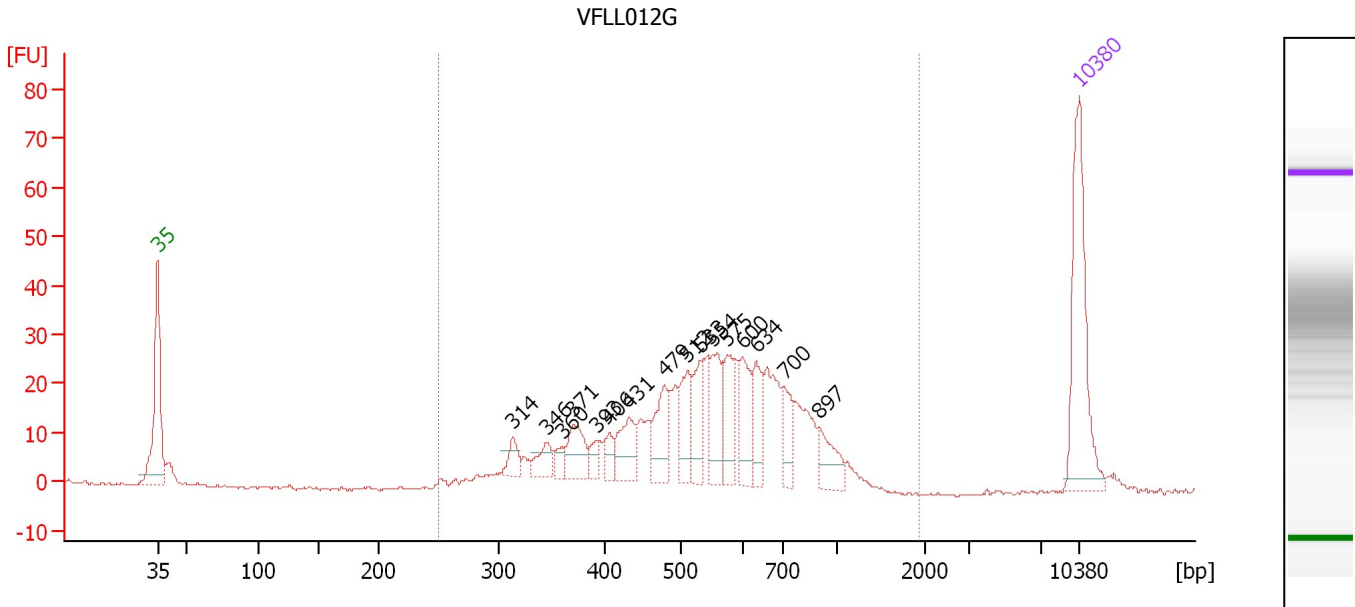
Region table for sample 10 : VFL012F

From [bp]	To [bp]	Average Size [bp]	Molarity [pmol/l]	Conc. [pg/μl]	Corr. Area	% of Total	Size distribution in CV [%]	Color
200	4,434	593	9,235.8	2,551.52	1,472.9	99	90.9	Blue

Assay Class: High Sensitivity DNA Assay
 Data Path: C:\...ents and Settings\Bioanalyzer\2012-12-13\2012-12-13_003.xad

Created: 12/13/2012 11:08:18 AM
 Modified: 12/13/2012 11:50:07 AM

Electropherogram Summary Continued ...



Overall Results for sample 11 : VFLLO12G

Number of peaks found: 16 Corr. Area 1: 521.9
 Noise: 0.2

Peak table for sample 11 : VFLLO12G

Peak	Size [bp]	Conc. [pg/μl]	Molarity [pmol/l]	Observations
1	35	125.00	5,411.3	Lower Marker
2	314	13.85	66.8	
3	346	17.18	75.1	
4	360	8.67	36.5	
5	371	28.82	117.8	
6	393	10.71	41.3	
7	406	11.71	43.7	
8	431	29.82	104.8	
9	479	37.63	119.0	
10	512	33.16	98.1	
11	533	31.81	90.4	
12	554	35.52	97.1	
13	575	36.27	95.5	
14	600	35.28	89.2	
15	634	27.38	65.4	
16	700	22.05	47.7	
17	897	22.61	38.2	
18	10,380	75.00	10.9	Upper Marker

Region table for sample 11 : VFLLO12G

From [bp]	To [bp]	Average Size [bp]	Molarity [pmol/l]	Conc. [pg/μl]	Corr. Area	% of Total	Size distribution in CV [%]	Color
251	1,920	572	2,033.9	670.29	521.9	94	33.3	Blue

Assay Class: High Sensitivity DNA Assay
Data Path: C:\...ents and Settings\Bioanalyzer\2012-12-13\2012-12-13_003.xad

Created: 12/13/2012 11:08:18 AM
Modified: 12/13/2012 11:50:07 AM

Gel Image

