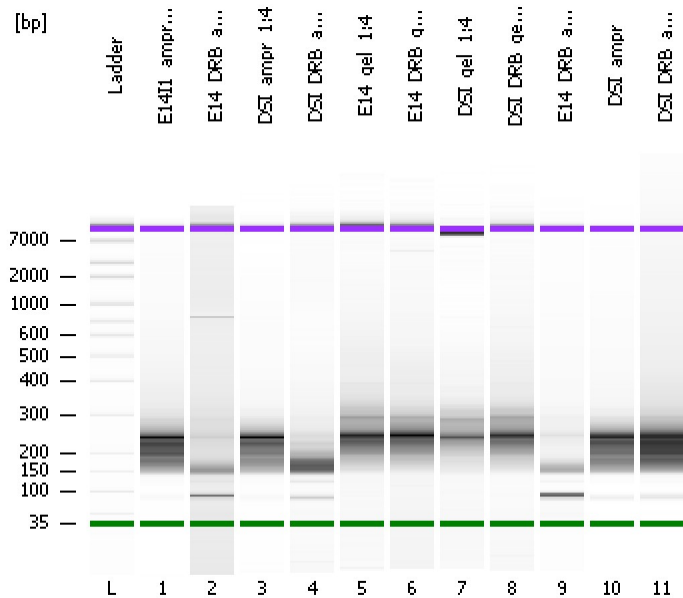


Assay Class: High Sensitivity DNA Assay
Data Path: C:\...ents and Settings\Bioanalyzer\2012-12-14\2012-12-14_001.xad

Created: 12/14/2012 10:57:52 AM
Modified: 12/14/2012 11:44:10 AM

Electrophoresis File Run Summary



Instrument Information:
 Instrument Name: DE13701086 Firmware: C.01.069
 Serial#: DE13701086 Type: G2938B

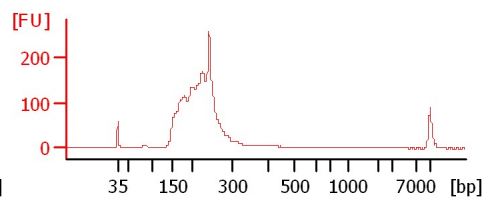
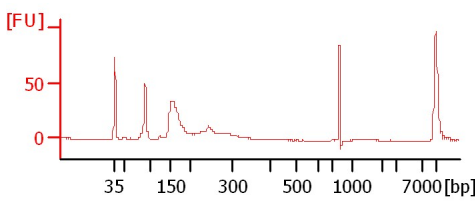
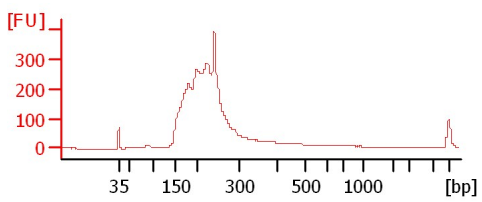
Assay Information:
 Assay Origin Path: C:\Program Files\Agilent\2100 bioanalyzer\2100 expert\assays\dsDNA\High Sensitivity DNA.xsy
 Assay Class: High Sensitivity DNA Assay
 Version: 1.03
 Assay Comments: Copyright © 2003-2010 Agilent Technologies

Chip Information:
 Chip Lot #:
 Reagent Kit Lot #:
 Chip Comments:

E14I1_ampr_1:4

E14_DRB_ampr_1:4

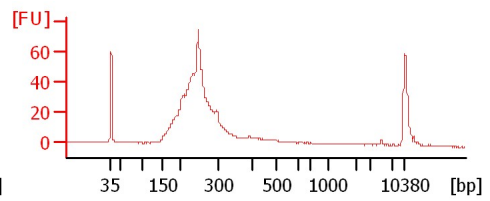
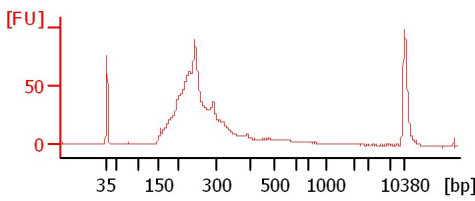
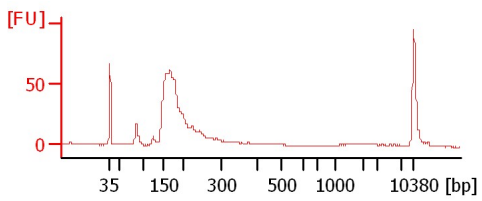
DSI_ampr_1:4



DSI_DRB_ampr_1:4

E14_gel_1:4

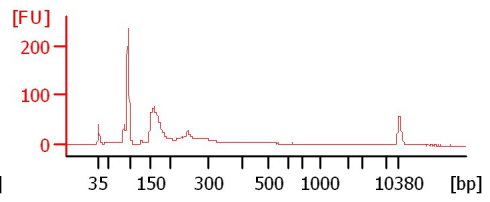
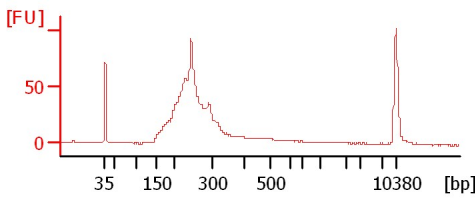
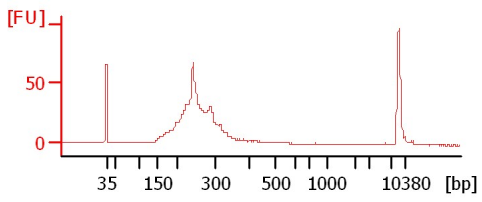
E14_DRB_gel_1:4



DSI_gel_1:4

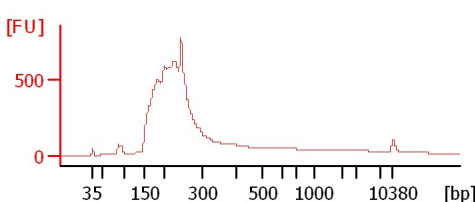
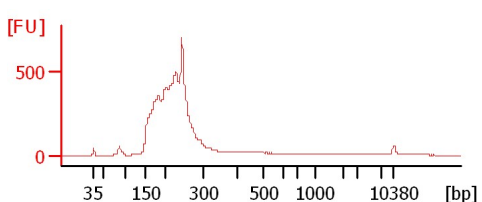
DSI_DRB_gel_1:4

E14_DRB_ampr



DSI_ampr

DSI_DRB_ampr



Assay Class: High Sensitivity DNA Assay
 Data Path: C:\...ents and Settings\Bioanalyzer\2012-12-14\2012-12-14_001.xad

Created: 12/14/2012 10:57:52 AM
 Modified: 12/14/2012 11:44:10 AM

Electrophoresis File Run Summary (Chip Summary)

Sample Name	Sample Comment	Rest. Digest	Status	Observation	Result Label	Result Color
E14I1_ampr_1:4		<input type="checkbox"/>	✓			
E14_DRB_ampr_1:4		<input type="checkbox"/>	✓			
DSI_ampr_1:4		<input type="checkbox"/>	✓			
DSI_DRB_ampr_1:4		<input type="checkbox"/>	✓			
E14_gel_1:4		<input type="checkbox"/>	✓			
E14_DRB_gel_1:4		<input type="checkbox"/>	✓			
DSI_gel_1:4		<input type="checkbox"/>	✓			
DSI_DRB_gel_1:4		<input type="checkbox"/>	✓			
E14_DRB_ampr		<input type="checkbox"/>	✓			
DSI_ampr		<input type="checkbox"/>	✓			
DSI_DRB_ampr		<input type="checkbox"/>	✓			
Ladder		<input type="checkbox"/>	✓			

Chip Lot #

Reagent Kit Lot #

Chip Comments :

Assay Class: High Sensitivity DNA Assay
Data Path: C:\...ents and Settings\Bioanalyzer\2012-12-14\2012-12-14_001.xad

Created: 12/14/2012 10:57:52 AM
Modified: 12/14/2012 11:44:10 AM

Electrophoresis Assay Details

General Analysis Settings

Number of Available Sample and Ladder Wells (Max.) : 12
Minimum Visible Range [s] : 32
Maximum Visible Range [s] : 138
Start Analysis Time Range [s] : 33
End Analysis Time Range [s] : 137.5
Ladder Concentration [pg/μl] : 1950
Uses Standard Area for Ladder Fragments
Lower Marker Concentration [pg/μl] : 125
Upper Marker Concentration [pg/μl] : 75
Used Upper Marker for Quantitation
Standard Curve Fit is Point to Point
Show Data Aligned to Lower and Upper Marker

Integrator Settings

Integration Start Time [s] : 33.05
Integration End Time [s] : 137
Slope Threshold : 0.8
Height Threshold [FU] : 5
Area Threshold : 0.1
Width Threshold [s] : 0.6
Baseline Plateau [s] : 0.5

Filter Settings

Filter Width [s] : 0.5
Polynomial Order : 4

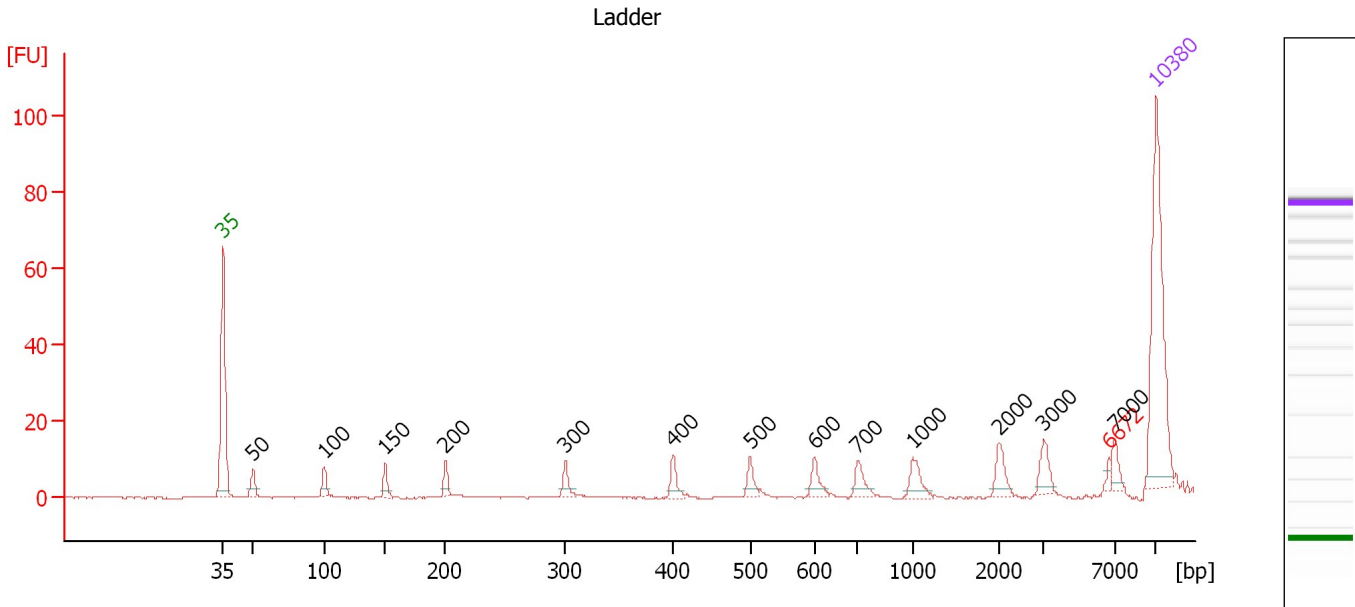
Ladder

Ladder Peak	Size	Area
1	35	160
2	50	210
3	100	208
4	150	221
5	200	242
6	300	270
7	400	305
8	500	306
9	600	336
10	700	321
11	1000	366
12	2000	413
13	3000	411
14	7000	400
15	10380	214

Assay Class: High Sensitivity DNA Assay
 Data Path: C:\...ents and Settings\Bioanalyzer\2012-12-14\2012-12-14_001.xad

Created: 12/14/2012 10:57:52 AM
 Modified: 12/14/2012 11:44:10 AM

Electropherogram Summary



Overall Results for Ladder

Noise: 0.1

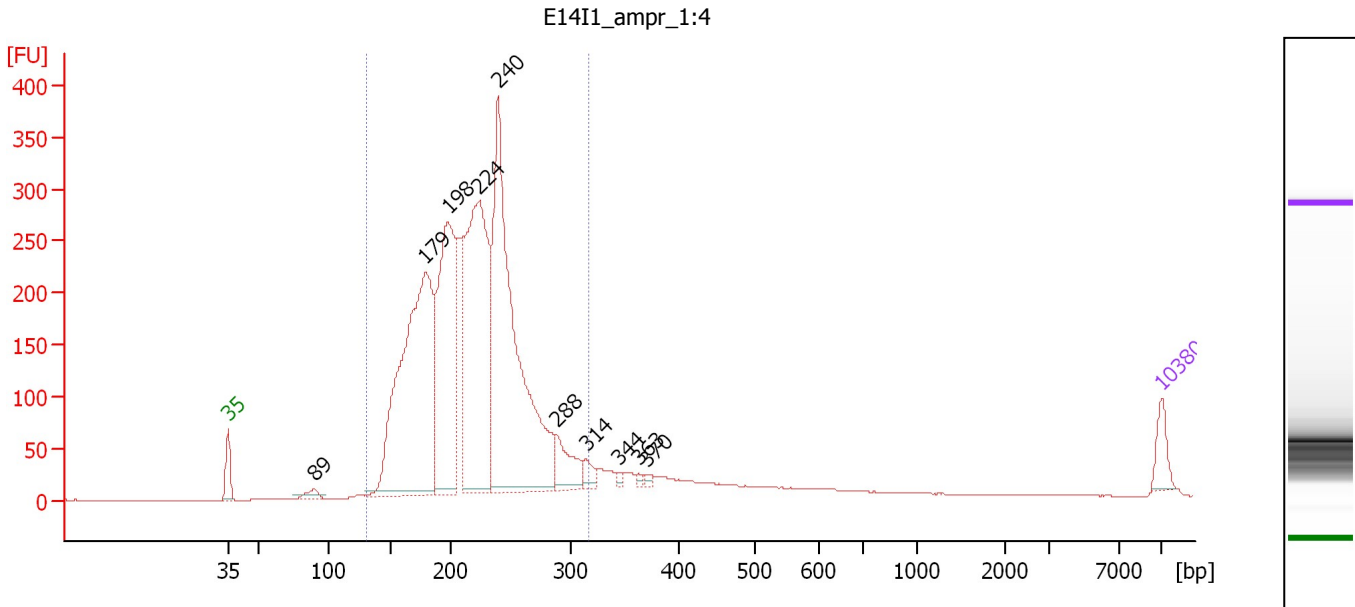
Peak table for Ladder

Peak	Size [bp]	Conc. [pg/μl]	Molarity [pmol/l]	Observations
1	35	125.00	5,411.3	Lower Marker
2	50	150.00	4,545.5	Ladder Peak
3	100	150.00	2,272.7	Ladder Peak
4	150	150.00	1,515.2	Ladder Peak
5	200	150.00	1,136.4	Ladder Peak
6	300	150.00	757.6	Ladder Peak
7	400	150.00	568.2	Ladder Peak
8	500	150.00	454.5	Ladder Peak
9	600	150.00	378.8	Ladder Peak
10	700	150.00	324.7	Ladder Peak
11	1,000	150.00	227.3	Ladder Peak
12	2,000	150.00	113.6	Ladder Peak
13	3,000	150.00	75.8	Ladder Peak
14	6,672	0.00	0.0	excluded peak
15	7,000	150.00	32.5	Ladder Peak
16	10,380	75.00	10.9	Upper Marker

Assay Class: High Sensitivity DNA Assay
 Data Path: C:\...ents and Settings\Bioanalyzer\2012-12-14\2012-12-14_001.xad

Created: 12/14/2012 10:57:52 AM
 Modified: 12/14/2012 11:44:10 AM

Electropherogram Summary Continued ...



Overall Results for sample 1 : E14I1 ampr 1:4

Number of peaks found: 10 Corr. Area 1: 4,542.8
 Noise: 0.2

Peak table for sample 1 : E14I1 ampr 1:4

Peak	Size [bp]	Conc. [pg/µl]	Molarity [pmol/l]	Observations
1	35	125.00	5,411.3	Lower Marker
2	89	52.52	889.7	
3	179	2,184.60	18,480.3	
4	198	1,343.38	10,296.3	
5	224	1,775.17	12,013.8	
6	240	2,208.80	13,951.9	
7	288	196.42	1,033.9	
8	314	68.31	329.3	
9	344	17.41	76.7	
10	363	14.93	62.3	
11	370	15.05	61.6	
12	10,380	75.00	10.9	Upper Marker

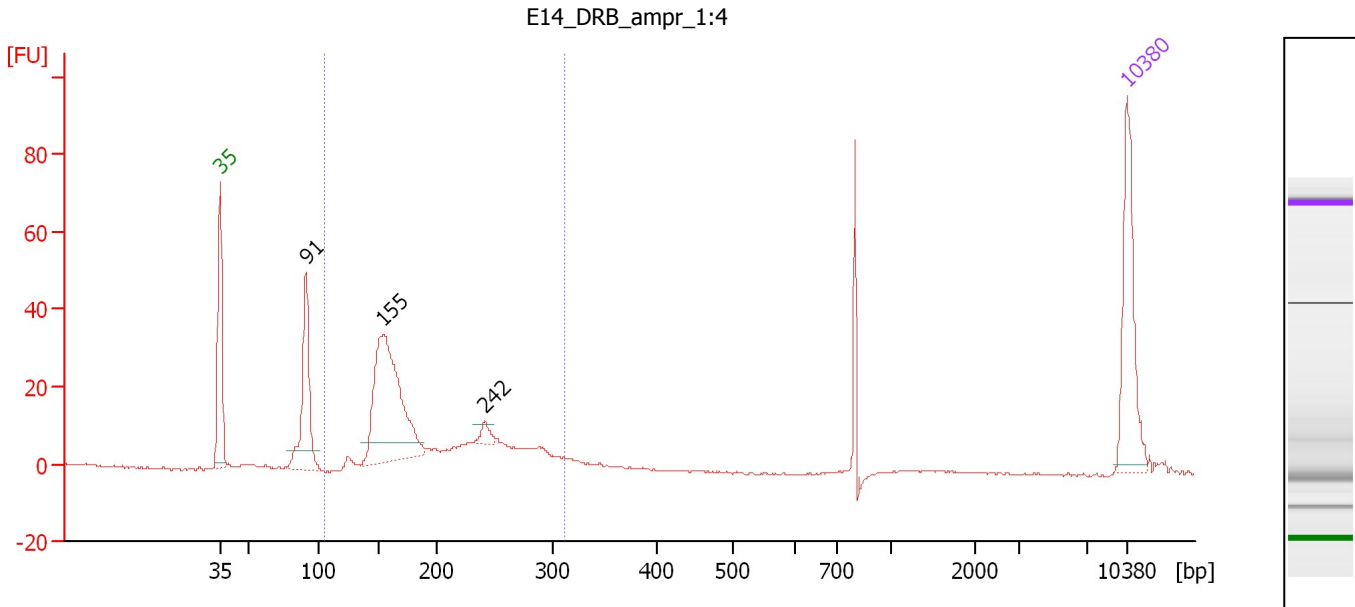
Region table for sample 1 : E14I1 ampr 1:4

From [bp]	To [bp]	Average Size [bp]	Molarity [pmol/l]	Conc. [pg/µl]	Corr. Area	% of Total	Size distribution in CV [%]	Color
131	317	217	60,979.0	8,407.52	4,542.8	91	17.2	Blue

Assay Class: High Sensitivity DNA Assay
 Data Path: C:\...ents and Settings\Bioanalyzer\2012-12-14\2012-12-14_001.xad

Created: 12/14/2012 10:57:52 AM
 Modified: 12/14/2012 11:44:10 AM

Electropherogram Summary Continued ...



Overall Results for sample 2 : E14 DRB ampr 1:4

Number of peaks found: 3 Corr. Area 1: 262.5
 Noise: 0.2

Peak table for sample 2 : E14 DRB ampr 1:4

Peak	Size [bp]	Conc. [pg/μl]	Molarity [pmol/l]	Observations
1	35	125.00	5,411.3	Lower Marker
2	91	131.21	2,181.2	
3	155	256.23	2,510.8	
4	242	12.63	79.2	
5	10,380	75.00	10.9	Upper Marker

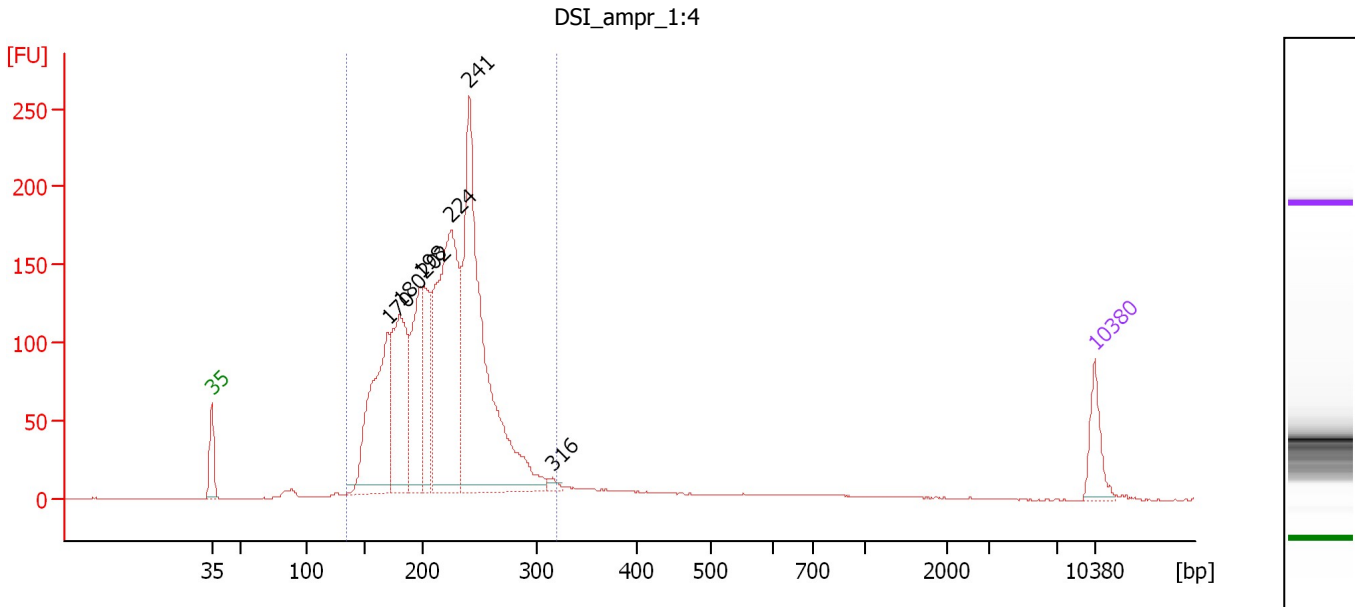
Region table for sample 2 : E14 DRB ampr 1:4

From [bp]	To [bp]	Average Size [bp]	Molarity [pmol/l]	Conc. [pg/μl]	Corr. Area	% of Total	Size distribution in CV [%]	Color
105	311	195	3,534.7	422.50	262.5	73	24.3	Blue

Assay Class: High Sensitivity DNA Assay
 Data Path: C:\...ents and Settings\Bioanalyzer\2012-12-14\2012-12-14_001.xad

Created: 12/14/2012 10:57:52 AM
 Modified: 12/14/2012 11:44:10 AM

Electropherogram Summary Continued ...



Overall Results for sample 3 : DSI_ampr_1:4

Number of peaks found: 7 Corr. Area 1: 2,549.0
 Noise: 0.2

Peak table for sample 3 : DSI_ampr_1:4

Peak	Size [bp]	Conc. [pg/μl]	Molarity [pmol/l]	Observations
1	35	125.00	5,411.3	Lower Marker
2	170	612.67	5,470.1	
3	180	542.56	4,567.4	
4	198	390.94	2,988.4	
5	202	272.58	2,044.9	
6	224	1,001.30	6,758.1	
7	241	1,279.76	8,032.8	
8	316	17.79	85.3	
9	10,380	75.00	10.9	Upper Marker

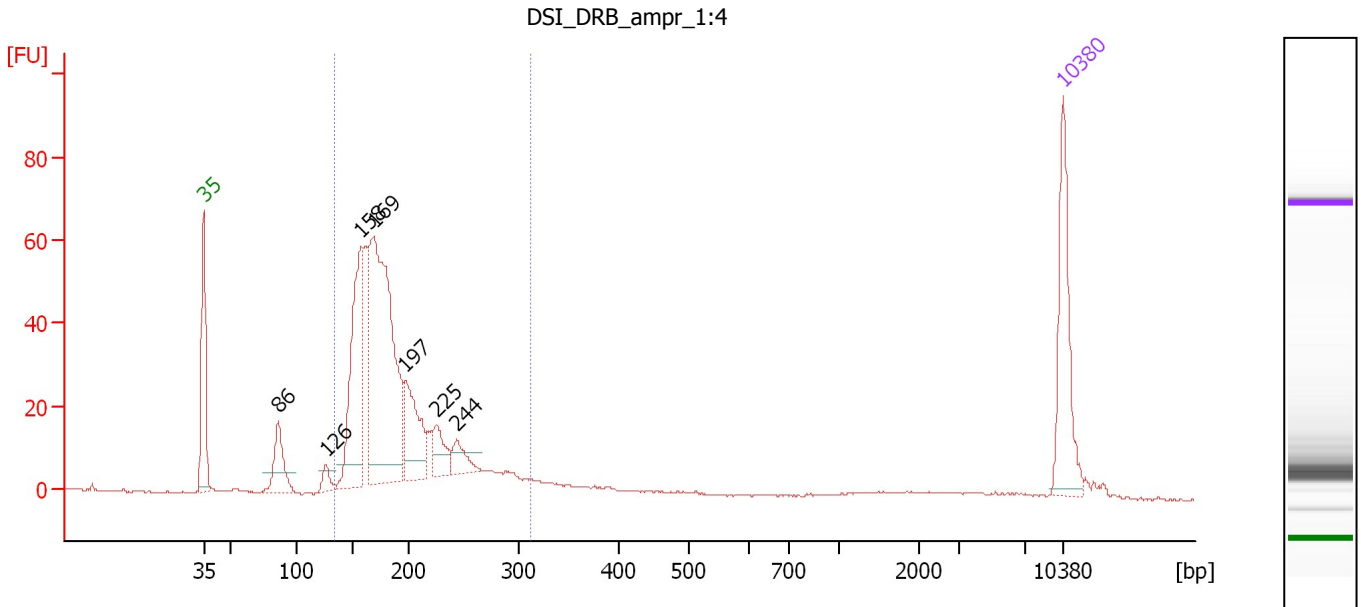
Region table for sample 3 : DSI_ampr_1:4

From [bp]	To [bp]	Average Size [bp]	Molarity [pmol/l]	Conc. [pg/μl]	Corr. Area	% of Total	Size distribution in CV [%]	Color
134	320	217	31,439.7	4,341.00	2,549.0	93	16.8	Blue

Assay Class: High Sensitivity DNA Assay
 Data Path: C:\...ents and Settings\Bioanalyzer\2012-12-14\2012-12-14_001.xad

Created: 12/14/2012 10:57:52 AM
 Modified: 12/14/2012 11:44:10 AM

Electropherogram Summary Continued ...



Overall Results for sample 4 : DSI DRB ampr 1:4

Number of peaks found: 7 Corr. Area 1: 610.8
 Noise: 0.2

Peak table for sample 4 : DSI DRB ampr 1:4

Peak	Size [bp]	Conc. [pg/μl]	Molarity [pmol/l]	Observations
1	35	125.00	5,411.3	Lower Marker
2	86	61.10	1,075.9	
3	126	15.62	188.1	
4	158	200.16	1,924.4	
5	169	407.02	3,657.0	
6	197	90.12	693.3	
7	225	36.34	244.8	
8	244	26.01	161.7	
9	10,380	75.00	10.9	Upper Marker

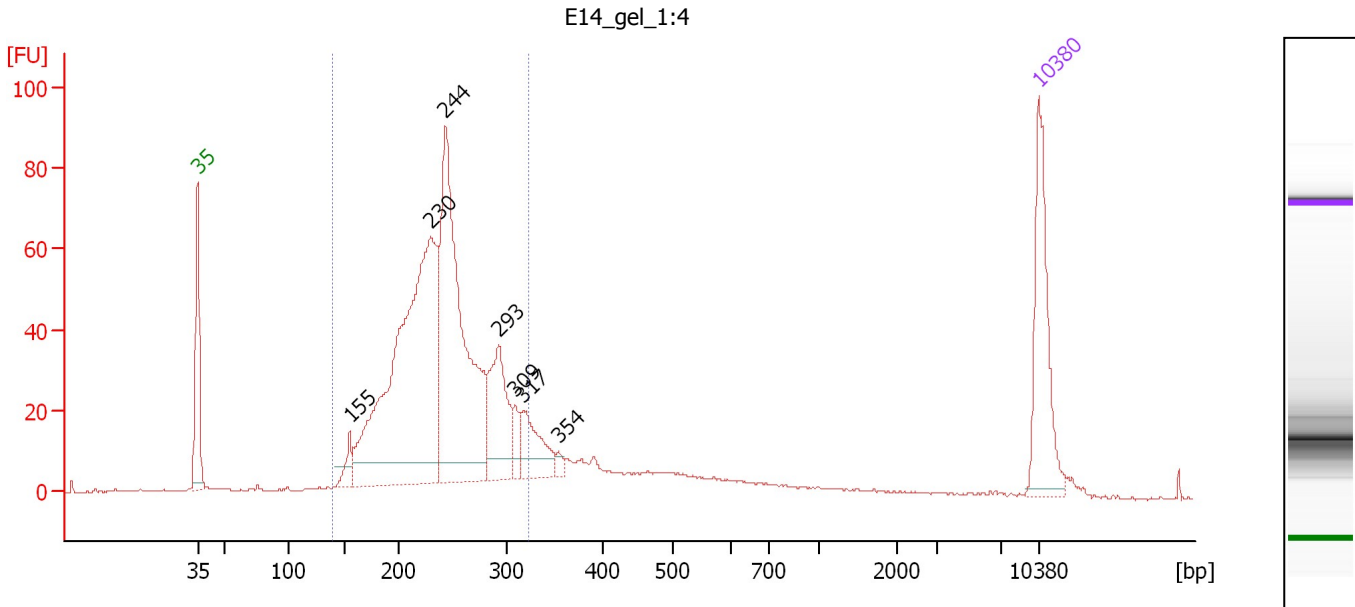
Region table for sample 4 : DSI DRB ampr 1:4

From [bp]	To [bp]	Average Size [bp]	Molarity [pmol/l]	Conc. [pg/μl]	Corr. Area	% of Total	Size distribution in CV [%]	Color
134	311	190	8,233.3	990.87	610.8	85	19.5	Blue

Assay Class: High Sensitivity DNA Assay
 Data Path: C:\...ents and Settings\Bioanalyzer\2012-12-14\2012-12-14_001.xad

Created: 12/14/2012 10:57:52 AM
 Modified: 12/14/2012 11:44:10 AM

Electropherogram Summary Continued ...



Overall Results for sample 5 : E14 gel 1:4

Number of peaks found: 7 Corr. Area 1: 941.0
 Noise: 0.2

Peak table for sample 5 : E14 gel 1:4

Peak	Size [bp]	Conc. [pg/μl]	Molarity [pmol/l]	Observations
1	35	125.00	5,411.3	Lower Marker
2	155	21.21	206.9	
3	230	483.91	3,186.8	
4	244	363.24	2,256.8	
5	293	92.82	479.7	
6	309	17.72	86.9	
7	317	51.88	247.8	
8	354	6.32	27.0	
9	10,380	75.00	10.9	Upper Marker

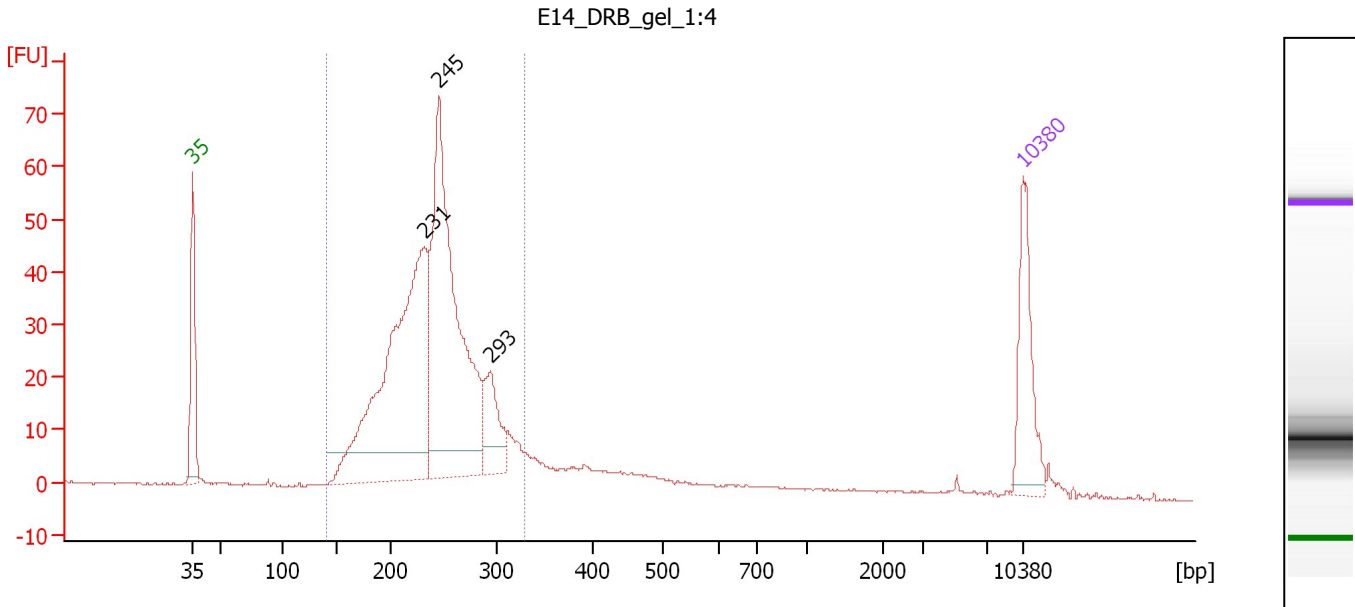
Region table for sample 5 : E14 gel 1:4

From [bp]	To [bp]	Average Size [bp]	Molarity [pmol/l]	Conc. [pg/μl]	Corr. Area	% of Total	Size distribution in CV [%]	Color
140	322	238	7,239.6	1,103.62	941.0	80	16.3	Blue

Assay Class: High Sensitivity DNA Assay
 Data Path: C:\...ents and Settings\Bioanalyzer\2012-12-14\2012-12-14_001.xad

Created: 12/14/2012 10:57:52 AM
 Modified: 12/14/2012 11:44:10 AM

Electropherogram Summary Continued ...



Overall Results for sample 6 : E14 DRB gel 1:4

Number of peaks found: 3 Corr. Area 1: 688.4
 Noise: 0.2

Peak table for sample 6 : E14 DRB gel 1:4

Peak	Size [bp]	Conc. [pg/μl]	Molarity [pmol/l]	Observations
1	35	125.00	5,411.3	Lower Marker
2	231	537.28	3,518.9	
3	245	524.58	3,246.5	
4	293	74.38	384.3	
5	10,380	75.00	10.9	Upper Marker

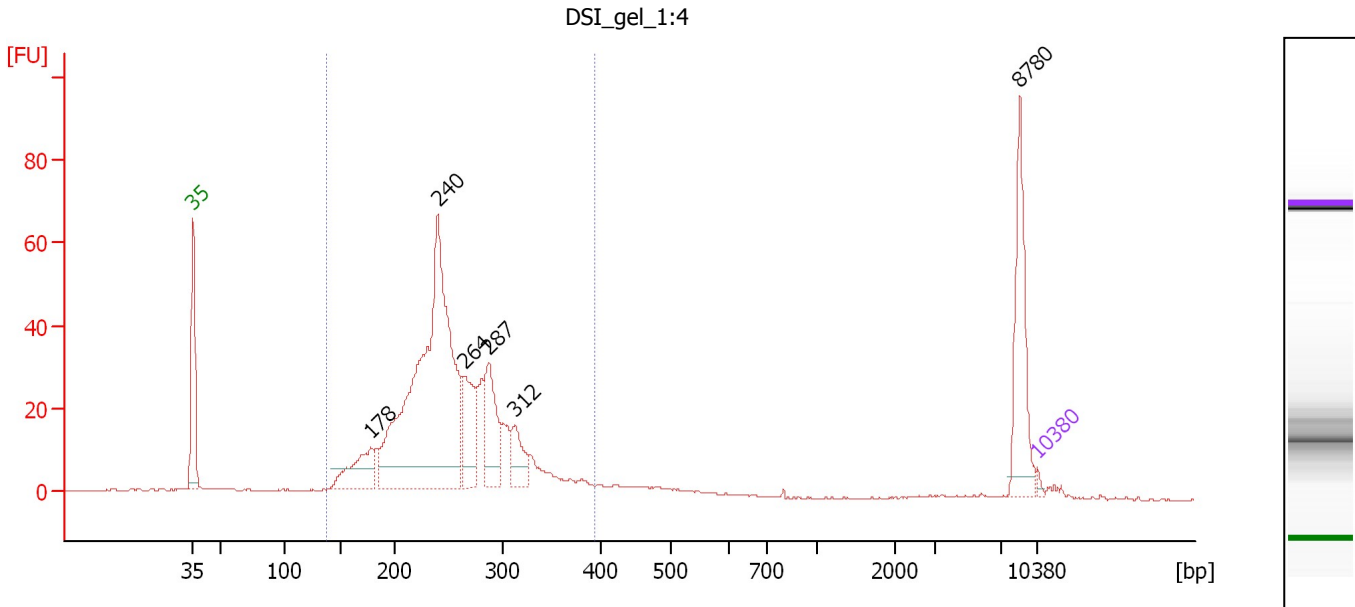
Region table for sample 6 : E14 DRB gel 1:4

From [bp]	To [bp]	Average Size [bp]	Molarity [pmol/l]	Conc. [pg/μl]	Corr. Area	% of Total	Size distribution in CV [%]	Color
140	327	239	8,374.7	1,286.03	688.4	86	15.5	Blue

Assay Class: High Sensitivity DNA Assay
 Data Path: C:\...ents and Settings\Bioanalyzer\2012-12-14\2012-12-14_001.xad

Created: 12/14/2012 10:57:52 AM
 Modified: 12/14/2012 11:44:10 AM

Electropherogram Summary Continued ...



Overall Results for sample 7 : DSI_gel 1:4

Number of peaks found: 6 Corr. Area 1: 639.4
 Noise: 0.2

Peak table for sample 7 : DSI_gel 1:4

Peak	Size [bp]	Conc. [pg/μl]	Molarity [pmol/l]	Observations
1	35	125.00	5,411.3	Lower Marker
2	178	2,083.88	17,710.0	
3	240	17,151.03	108,471.9	
4	264	2,432.65	13,981.1	
5	287	2,451.51	12,955.3	
6	312	1,153.91	5,602.6	
7	8,780	2,475.48	427.2	
8	10,380	75.00	10.9	Upper Marker

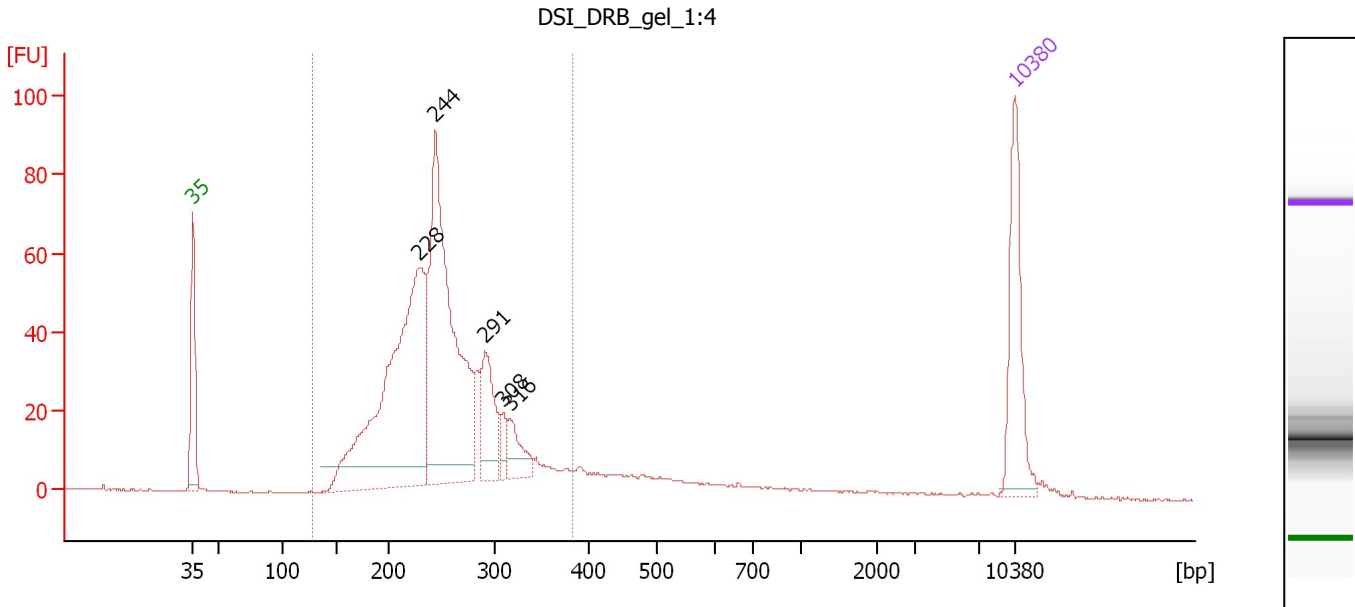
Region table for sample 7 : DSI_gel 1:4

From [bp]	To [bp]	Average Size [bp]	Molarity [pmol/l]	Conc. [pg/μl]	Corr. Area	% of Total	Size distribution in CV [%]	Color
137	395	252	201,459.4	32,037.30	639.4	82	18.6	Blue

Assay Class: High Sensitivity DNA Assay
 Data Path: C:\...ents and Settings\Bioanalyzer\2012-12-14\2012-12-14_001.xad

Created: 12/14/2012 10:57:52 AM
 Modified: 12/14/2012 11:44:10 AM

Electropherogram Summary Continued ...



Overall Results for sample 8 : DSI DRB gel 1:4

Number of peaks found: 5 Corr. Area 1: 916.4
 Noise: 0.2

Peak table for sample 8 : DSI DRB gel 1:4

Peak	Size [bp]	Conc. [pg/μl]	Molarity [pmol/l]	Observations
1	35	125.00	5,411.3	Lower Marker
2	228	437.43	2,901.7	
3	244	387.87	2,408.2	
4	291	77.55	403.9	
5	308	16.43	80.8	
6	316	35.57	170.3	
7	10,380	75.00	10.9	Upper Marker

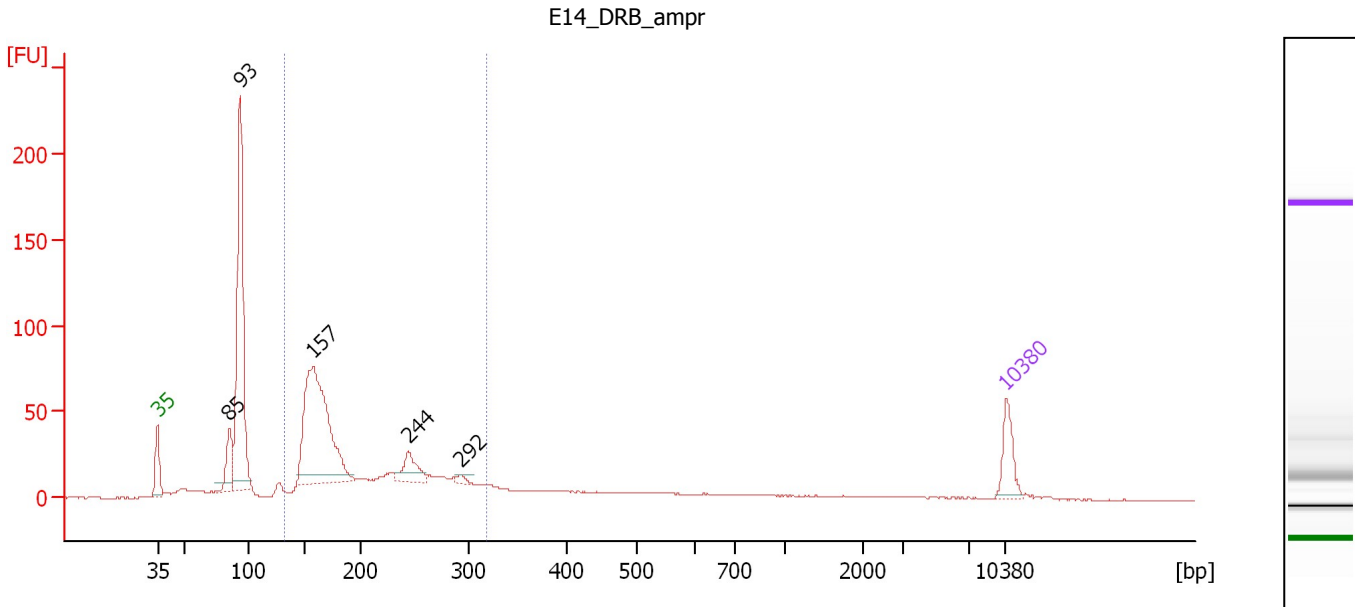
Region table for sample 8 : DSI DRB gel 1:4

From [bp]	To [bp]	Average Size [bp]	Molarity [pmol/l]	Conc. [pg/μl]	Corr. Area	% of Total	Size distribution in CV [%]	Color
128	383	249	7,055.1	1,114.13	916.4	88	18.3	Blue

Assay Class: High Sensitivity DNA Assay
 Data Path: C:\...ents and Settings\Bioanalyzer\2012-12-14\2012-12-14_001.xad

Created: 12/14/2012 10:57:52 AM
 Modified: 12/14/2012 11:44:10 AM

Electropherogram Summary Continued ...



Overall Results for sample 9 : E14 DRB ampr

Number of peaks found: 5 Corr. Area 1: 619.4
 Noise: 0.2

Peak table for sample 9 : E14 DRB ampr

Peak	Size [bp]	Conc. [pg/μl]	Molarity [pmol/l]	Observations
1	35	125.00	5,411.3	Lower Marker
2	85	135.39	2,426.8	
3	93	868.87	14,198.8	
4	157	862.96	8,302.4	
5	244	98.69	611.8	
6	292	16.41	85.1	
7	10,380	75.00	10.9	Upper Marker

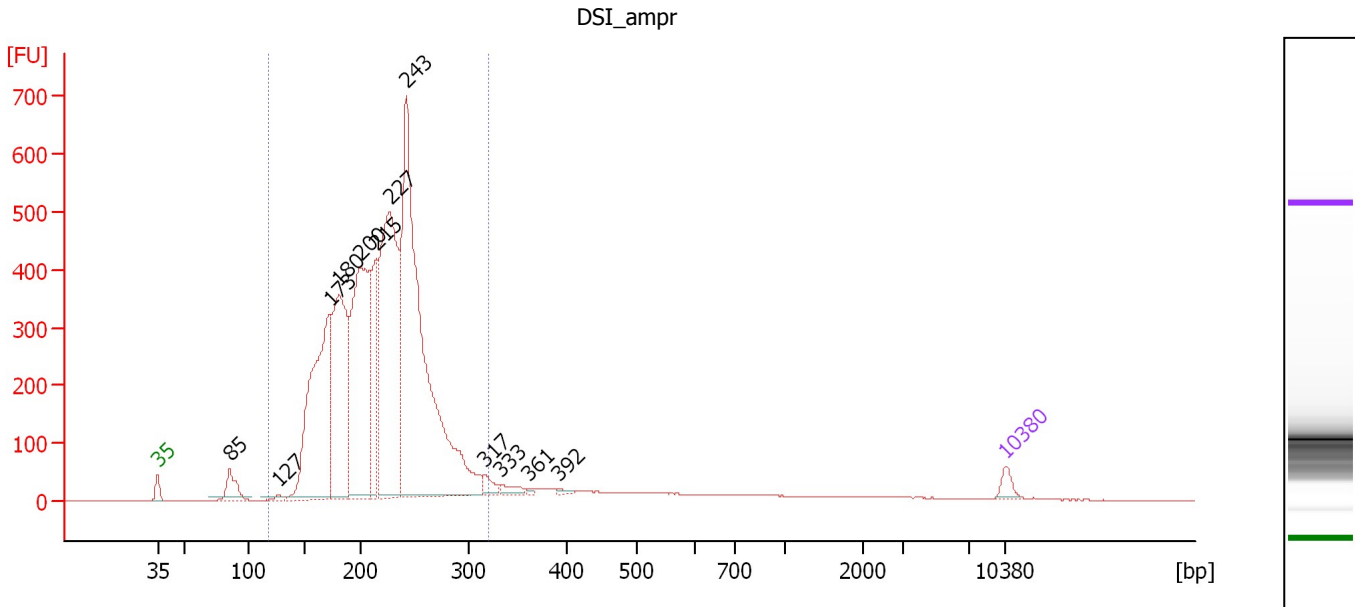
Region table for sample 9 : E14 DRB ampr

From [bp]	To [bp]	Average Size [bp]	Molarity [pmol/l]	Conc. [pg/μl]	Corr. Area	% of Total	Size distribution in CV [%]	Color
132	318	201	13,759.5	1,690.90	619.4	52	24.7	Blue

Assay Class: High Sensitivity DNA Assay
 Data Path: C:\...ents and Settings\Bioanalyzer\2012-12-14\2012-12-14_001.xad

Created: 12/14/2012 10:57:52 AM
 Modified: 12/14/2012 11:44:10 AM

Electropherogram Summary Continued ...



Overall Results for sample 10 : DSI_ampr

Number of peaks found: 12 Corr. Area 1: 7,351.9
 Noise: 0.2

Peak table for sample 10 : DSI_ampr

Peak	Size [bp]	Conc. [pg/μl]	Molarity [pmol/l]	Observations
1	35	125.00	5,411.3	Lower Marker
2	85	333.62	5,954.0	
3	127	40.66	486.4	
4	173	3,008.18	26,389.2	
5	180	2,432.19	20,430.6	
6	200	2,966.53	22,499.4	
7	215	1,158.94	8,161.5	
8	227	3,535.92	23,553.4	
9	243	5,776.04	36,038.1	
10	317	122.31	584.7	
11	333	92.65	421.5	
12	361	22.60	95.0	
13	392	28.79	111.4	
14	10,380	75.00	10.9	Upper Marker

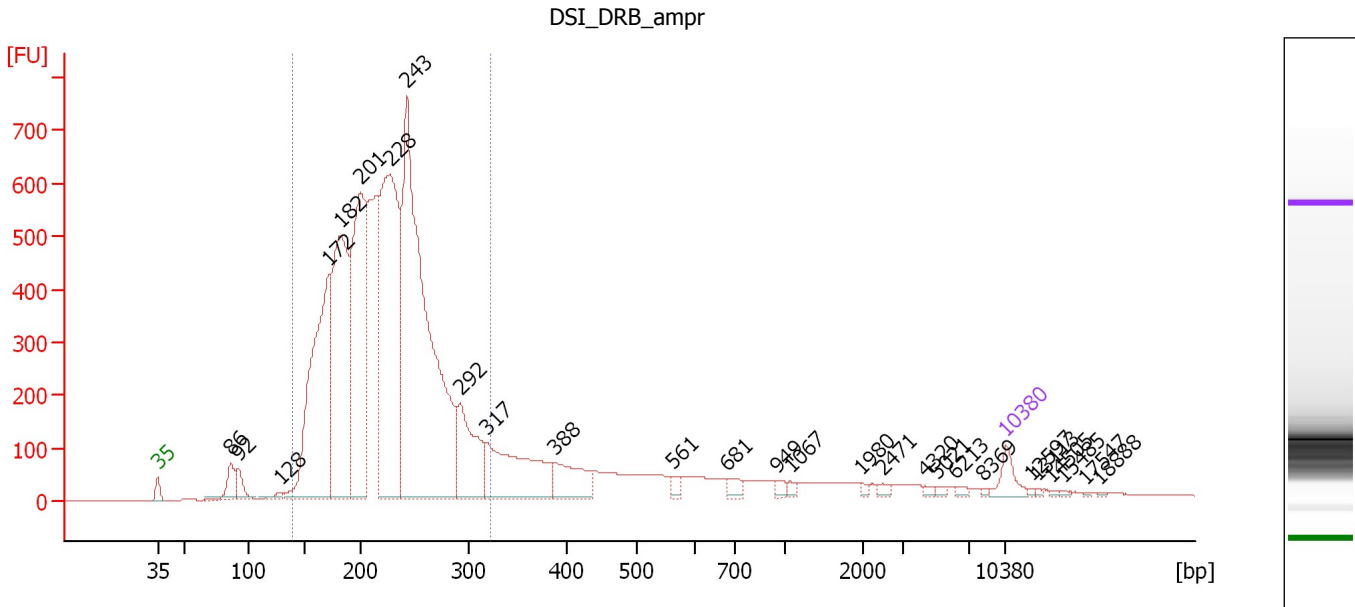
Region table for sample 10 : DSI_ampr

From [bp]	To [bp]	Average Size [bp]	Molarity [pmol/l]	Conc. [pg/μl]	Corr. Area	% of Total	Size distribution in CV [%]	Color
116	320	218	139,659.0	19,374.42	7,351.9	91	17.1	Blue

Assay Class: High Sensitivity DNA Assay
 Data Path: C:\...ents and Settings\Bioanalyzer\2012-12-14\2012-12-14_001.xad

Created: 12/14/2012 10:57:52 AM
 Modified: 12/14/2012 11:44:10 AM

Electropherogram Summary Continued ...



Overall Results for sample 11 : DSI DRB ampr

Number of peaks found: 27 Corr. Area 1: 9,999.5
 Noise: 0.2

Peak table for sample 11 : DSI DRB ampr

Peak	Size [bp]	Conc. [pg/μl]	Molarity [pmol/l]	Observations
1	35	125.00	5,411.3	Lower Marker
2	86	143.00	2,521.9	
3	92	114.12	1,886.5	
4	128	36.31	431.1	
5	172	1,689.29	14,887.1	
6	182	1,578.88	13,158.4	
7	201	1,592.27	12,000.3	
8	228	2,038.14	13,564.2	
9	243	3,141.77	19,563.4	
10	292	507.72	2,635.6	
11	317	667.73	3,189.5	
12	388	249.45	974.3	
13	561	36.95	99.8	
14	681	46.18	102.7	
15	949	27.44	43.8	
16	1,067	19.76	28.1	
17	1,980	11.90	9.1	
18	2,471	20.43	12.5	
19	4,320	12.77	4.5	
20	5,021	14.47	4.4	
21	6,213	13.73	3.3	
22	8,369	6.48	1.2	
23	10,380	75.00	10.9	Upper Marker
24	12,597	0.00	0.0	
25	13,113	0.00	0.0	
26	14,505	0.00	0.0	


Assay Class: High Sensitivity DNA Assay
Data Path: C:\...ents and Settings\Bioanalyzer\2012-12-14\2012-12-14_001.xad

Created: 12/14/2012 10:57:52 AM
Modified: 12/14/2012 11:44:10 AM

Electropherogram Summary Continued ...**... Peak table for sample 11 : DSI DRB ampr**

Peak	Size [bp]	Conc. [pg/ μ l]	Molarity [pmol/l]	Observations
27	15,485	0.00	0.0	
28	17,547	0.00	0.0	
29	18,888	0.00	0.0	

Region table for sample 11 : DSI DRB ampr

From [bp]	To [bp]	Average Size [bp]	Molarity [pmol/l]	Conc. [pg/ μ l]	Corr. Area	% of Total	Size distribution in CV [%]	Color
138	323	222	82,722.5	11,644.29	9,999.5	81	17.9	

Assay Class: High Sensitivity DNA Assay
Data Path: C:\...ents and Settings\Bioanalyzer\2012-12-14\2012-12-14_001.xad

Created: 12/14/2012 10:57:52 AM
Modified: 12/14/2012 11:44:10 AM

Gel Image

