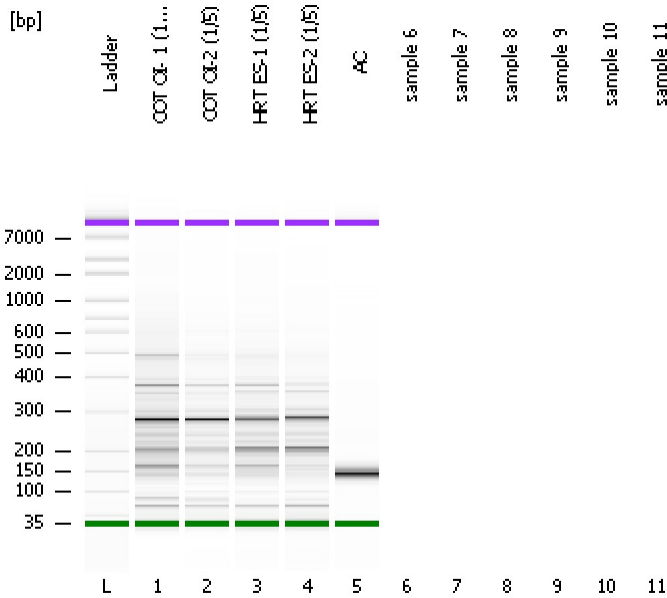


Assay Class: High Sensitivity DNA Assay  
Data Path: C:\...ents and Settings\Bioanalyzer\2012-12-14\2012-12-14\_002.xad

Created: 12/14/2012 1:18:47 PM  
Modified: 12/14/2012 2:44:23 PM

**Electrophoresis File Run Summary**



Instrument Information:

Instrument Name: DE13701086      Firmware: C.01.069  
Serial#: DE13701086      Type: G2938B

Assay Information:

Assay Origin Path: C:\Program Files\Agilent\2100 bioanalyzer\2100 expert\assays\dsDNA\High Sensitivity DNA.xsy  
Assay Class: High Sensitivity DNA Assay  
Version: 1.03  
Assay Comments: Copyright © 2003-2010 Agilent Technologies

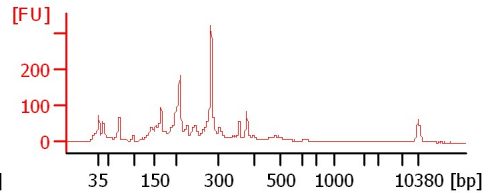
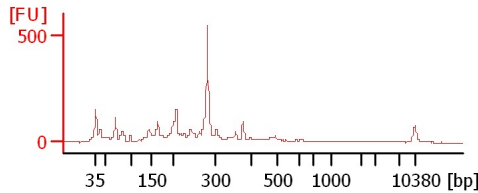
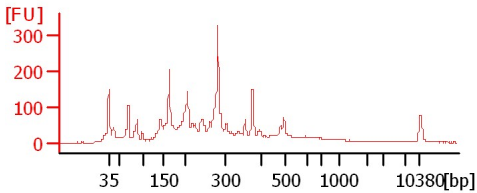
Chip Information:

Chip Lot #:  
Reagent Kit Lot #:  
Chip Comments:

**COT OI- 1 (1/5)**

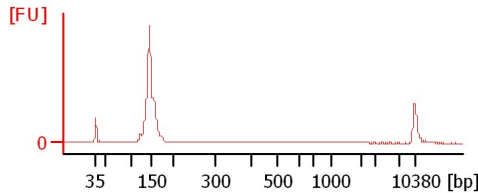
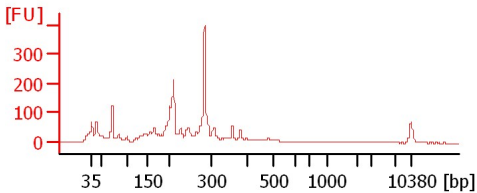
**COT OI-2 (1/5)**

**HRT ES-1 (1/5)**



**HRT ES-2 (1/5)**

**AC**



Assay Class: High Sensitivity DNA Assay  
Data Path: C:\...ents and Settings\Bioanalyzer\2012-12-14\2012-12-14\_002.xad

Created: 12/14/2012 1:18:47 PM  
Modified: 12/14/2012 2:44:23 PM

**Electrophoresis File Run Summary (Chip Summary)**

Sample Name	Sample Comment	Rest. Digest	Status	Observation	Result Label	Result Color
COT OI- 1 (1/5)		<input type="checkbox"/>	✓			
COT OI-2 (1/5)		<input type="checkbox"/>	✓			
HRT ES-1 (1/5)		<input type="checkbox"/>	✓			
HRT ES-2 (1/5)		<input type="checkbox"/>	✓			
AC		<input type="checkbox"/>	✓			
sample 6		<input type="checkbox"/>				
sample 7		<input type="checkbox"/>				
sample 8		<input type="checkbox"/>				
sample 9		<input type="checkbox"/>				
sample 10		<input type="checkbox"/>				
sample 11		<input type="checkbox"/>				
Ladder		<input type="checkbox"/>	✓			

**Chip Lot #**

**Reagent Kit Lot #**

**Chip Comments :**

Assay Class: High Sensitivity DNA Assay  
Data Path: C:\...ents and Settings\Bioanalyzer\2012-12-14\2012-12-14\_002.xad

Created: 12/14/2012 1:18:47 PM  
Modified: 12/14/2012 2:44:23 PM

**Electrophoresis Assay Details**

**General Analysis Settings**

Number of Available Sample and Ladder Wells (Max.) : 12  
Minimum Visible Range [s] : 32  
Maximum Visible Range [s] : 138  
Start Analysis Time Range [s] : 33  
End Analysis Time Range [s] : 137.5  
Ladder Concentration [pg/μl] : 1950  
Uses Standard Area for Ladder Fragments  
Lower Marker Concentration [pg/μl] : 125  
Upper Marker Concentration [pg/μl] : 75  
Used Upper Marker for Quantitation  
Standard Curve Fit is Point to Point  
Show Data Aligned to Lower and Upper Marker

**Integrator Settings**

Integration Start Time [s] : 33.05  
Integration End Time [s] : 137  
Slope Threshold : 0.8  
Height Threshold [FU] : 5  
Area Threshold : 0.1  
Width Threshold [s] : 0.6  
Baseline Plateau [s] : 0.5

**Filter Settings**

Filter Width [s] : 0.5  
Polynomial Order : 4

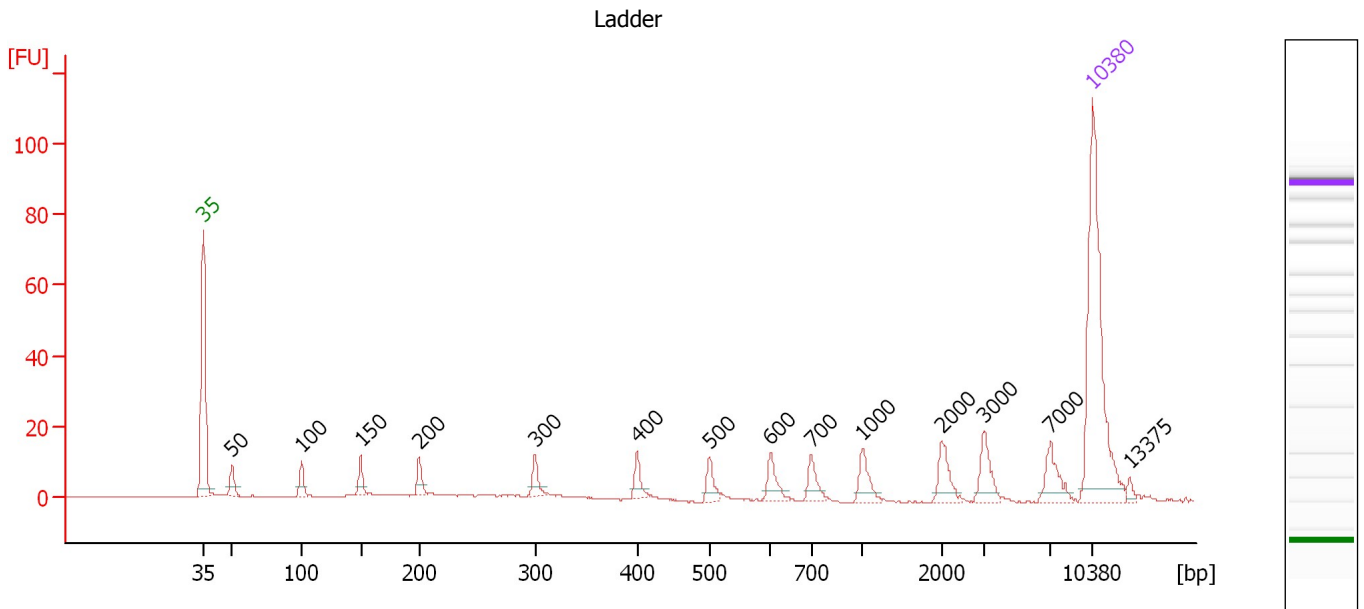
**Ladder**

Ladder Peak	Size	Area
1	35	160
2	50	210
3	100	208
4	150	221
5	200	242
6	300	270
7	400	305
8	500	306
9	600	336
10	700	321
11	1000	366
12	2000	413
13	3000	411
14	7000	400
15	10380	214

Assay Class: High Sensitivity DNA Assay  
 Data Path: C:\...ents and Settings\Bioanalyzer\2012-12-14\2012-12-14\_002.xad

Created: 12/14/2012 1:18:47 PM  
 Modified: 12/14/2012 2:44:23 PM

**Electropherogram Summary**



**Overall Results for Ladder**

Noise: 0.1

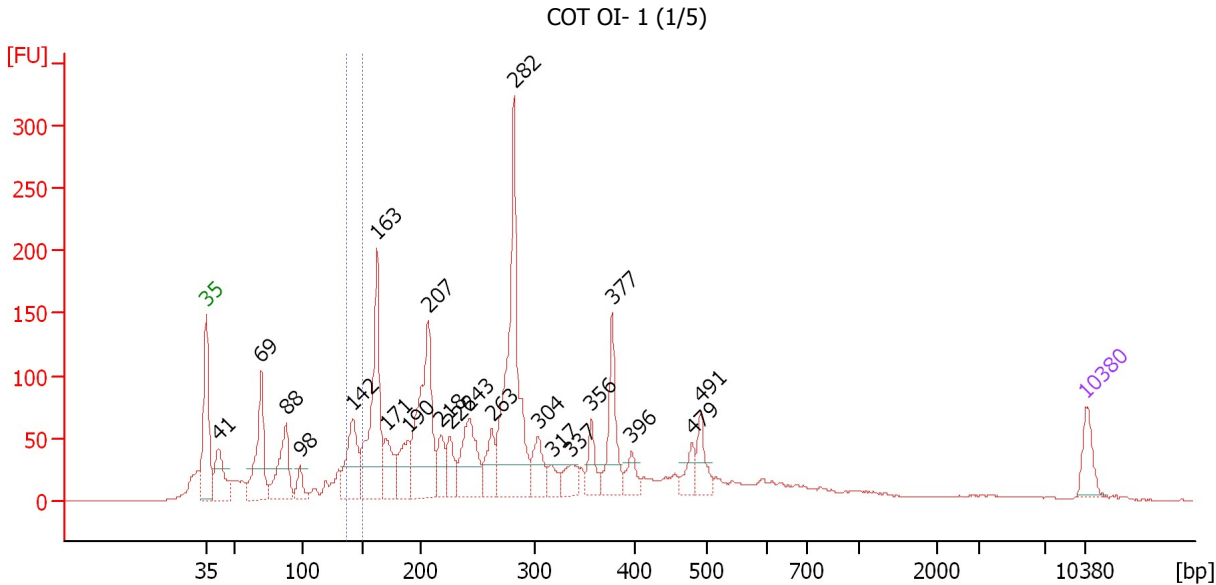
**Peak table for Ladder**

Peak	Size [bp]	Conc. [pg/μl]	Molarity [pmol/l]	Observations
1	35	125.00	5,411.3	Lower Marker
2	50	150.00	4,545.5	Ladder Peak
3	100	150.00	2,272.7	Ladder Peak
4	150	150.00	1,515.2	Ladder Peak
5	200	150.00	1,136.4	Ladder Peak
6	300	150.00	757.6	Ladder Peak
7	400	150.00	568.2	Ladder Peak
8	500	150.00	454.5	Ladder Peak
9	600	150.00	378.8	Ladder Peak
10	700	150.00	324.7	Ladder Peak
11	1,000	150.00	227.3	Ladder Peak
12	2,000	150.00	113.6	Ladder Peak
13	3,000	150.00	75.8	Ladder Peak
14	7,000	150.00	32.5	Ladder Peak
15	10,380	75.00	10.9	Upper Marker
16	13,375	0.00	0.0	

Assay Class: High Sensitivity DNA Assay  
 Data Path: C:\...ents and Settings\Bioanalyzer\2012-12-14\2012-12-14\_002.xad

Created: 12/14/2012 1:18:47 PM  
 Modified: 12/14/2012 2:44:23 PM

**Electropherogram Summary Continued ...**



**Setpoint Deviations for sample 1 : COT OI- 1 (1/5)**

Height Threshold [FU] : 25

**Overall Results for sample 1 : COT OI- 1 (1/5)**

Number of peaks found: 22                      Corr. Area 1: 125.4  
 Noise: 0.5

**Peak table for sample 1 : COT OI- 1 (1/5)**

Peak	Size [bp]	Conc. [pg/μl]	Molarity [pmol/l]	Observations
1	35	125.00	5,411.3	Lower Marker
2	41	249.64	9,124.1	
3	69	409.19	8,952.2	
4	88	324.72	5,621.8	
5	98	83.07	1,289.2	
6	142	314.32	3,347.5	
7	163	675.71	6,286.3	
8	171	195.70	1,732.7	
9	190	180.18	1,437.2	
10	207	649.64	4,754.1	
11	218	128.99	895.6	
12	226	128.59	861.6	
13	243	307.11	1,912.0	
14	263	149.87	863.7	
15	282	925.86	4,974.5	
16	304	140.70	701.5	
17	317	69.98	334.4	
18	337	90.86	408.9	
19	356	104.75	445.5	
20	377	245.73	987.9	
21	396	75.44	288.3	
22	479	75.25	238.0	

Assay Class: High Sensitivity DNA Assay  
Data Path: C:\...ents and Settings\Bioanalyzer\2012-12-14\2012-12-14\_002.xad

Created: 12/14/2012 1:18:47 PM  
Modified: 12/14/2012 2:44:23 PM

**Electropherogram Summary Continued ...****... Peak table for sample 1 : COT OI- 1 (1/5)**

Peak	Size [bp]	Conc. [pg/μl]	Molarity [pmol/l]	Observations
23	491	106.30	328.1	
24	▶ 10,380	75.00	10.9	Upper Marker

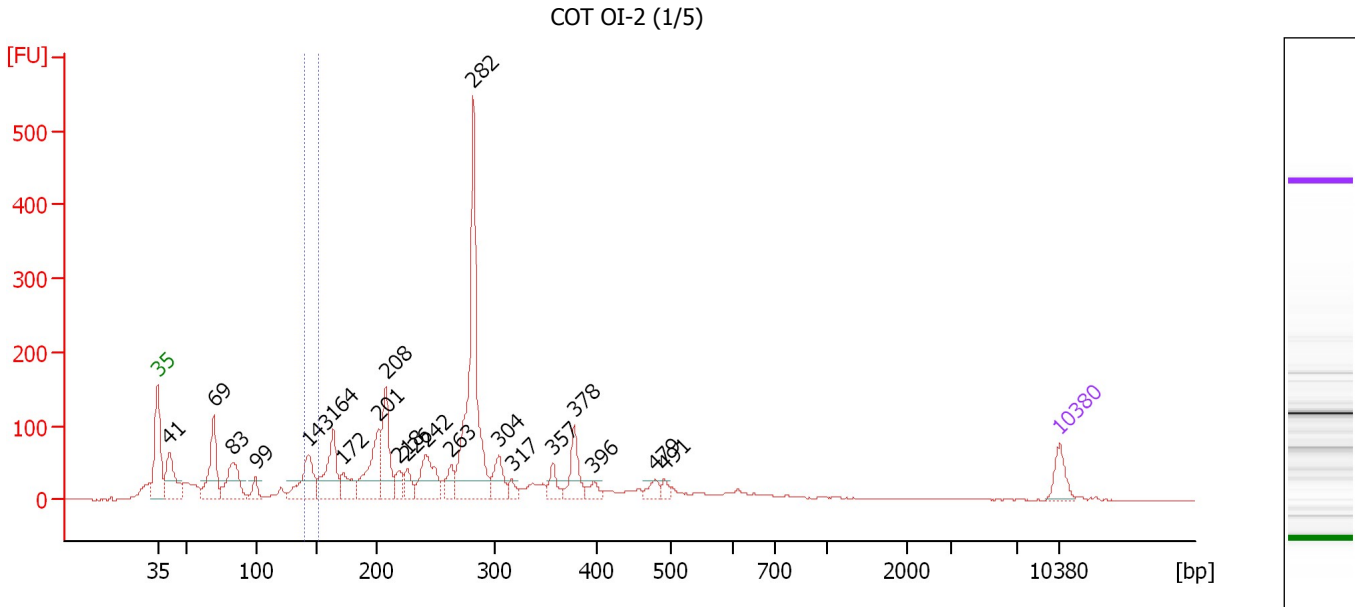
**Region table for sample 1 : COT OI- 1 (1/5)**

From [bp]	To [bp]	Average Size [bp]	Molarity [pmol/l]	Conc. [pg/μl]	Corr. Area	% of Total	Size distribution in CV [%]	Color
136	150	143	3,236.6	304.84	125.4	4	2.6	■

Assay Class: High Sensitivity DNA Assay  
 Data Path: C:\...ents and Settings\Bioanalyzer\2012-12-14\2012-12-14\_002.xad

Created: 12/14/2012 1:18:47 PM  
 Modified: 12/14/2012 2:44:23 PM

**Electropherogram Summary Continued ...**



**Setpoint Deviations for sample 2 : COT OI-2 (1/5)**

Height Threshold [FU] : 25

**Overall Results for sample 2 : COT OI-2 (1/5)**

Number of peaks found: 21                      Corr. Area 1: 94.8  
 Noise: 0.6

**Peak table for sample 2 : COT OI-2 (1/5)**

Peak	Size [bp]	Conc. [pg/μl]	Molarity [pmol/l]	Observations
1	35	125.00	5,411.3	Lower Marker
2	41	332.27	12,267.1	
3	69	363.96	7,985.8	
4	83	304.86	5,565.7	
5	99	77.28	1,183.7	
6	143	309.93	3,282.9	
7	164	347.17	3,213.5	
8	172	149.94	1,323.2	
9	201	365.27	2,748.5	
10	208	328.76	2,399.9	
11	218	89.77	623.8	
12	226	87.32	585.0	
13	242	254.95	1,596.8	
14	263	96.25	553.7	
15	282	1,123.93	6,028.6	
16	304	147.95	737.5	
17	317	49.23	235.4	
18	357	79.70	338.7	
19	378	162.96	653.8	
20	396	52.01	198.9	
21	479	55.90	176.8	
22	491	33.31	102.8	


Assay Class: High Sensitivity DNA Assay  
Data Path: C:\...ents and Settings\Bioanalyzer\2012-12-14\2012-12-14\_002.xad

Created: 12/14/2012 1:18:47 PM  
Modified: 12/14/2012 2:44:23 PM

**Electropherogram Summary Continued ...****... Peak table for sample 2 : COT OI-2 (1/5)**

Peak	Size [bp]	Conc. [pg/ $\mu$ l]	Molarity [pmol/l]	Observations
23	10,380	75.00	10.9	Upper Marker

**Region table for sample 2 : COT OI-2 (1/5)**

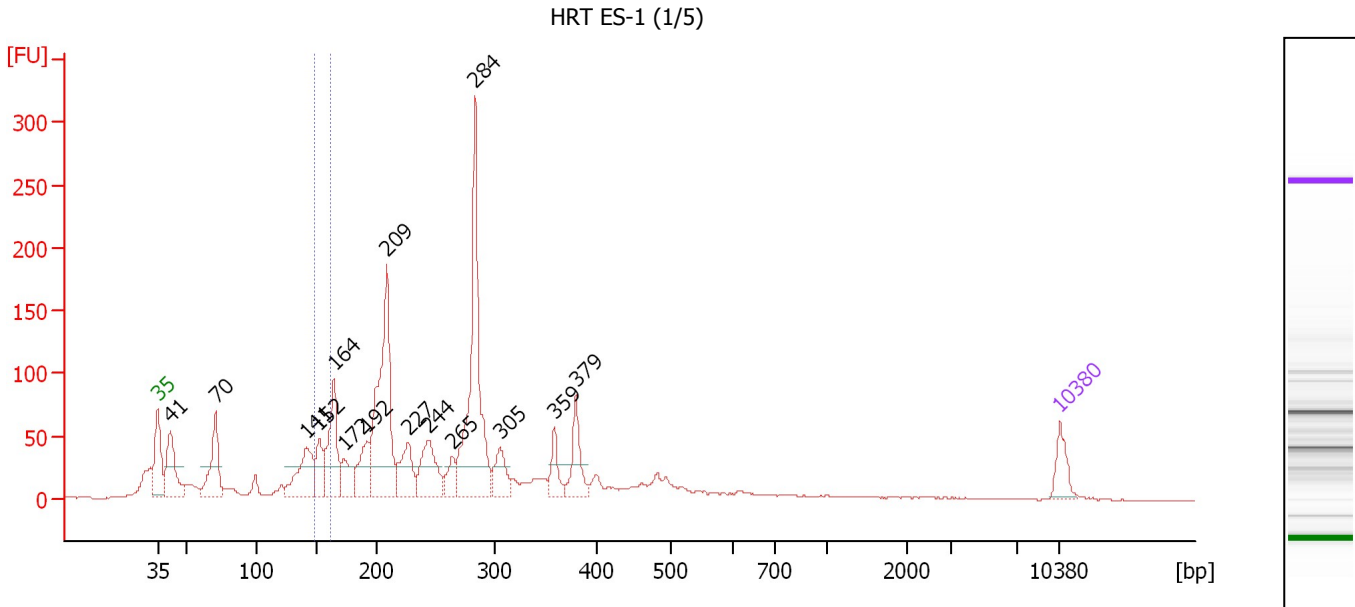
From [bp]	To [bp]	Average Size [bp]	Molarity [pmol/l]	Conc. [pg/ $\mu$ l]	Corr. Area	% of Total	Size distribution in CV [%]	Color
140	151	144	2,174.2	206.87	94.8	3	2.1	



Assay Class: High Sensitivity DNA Assay  
 Data Path: C:\...ents and Settings\Bioanalyzer\2012-12-14\2012-12-14\_002.xad

Created: 12/14/2012 1:18:47 PM  
 Modified: 12/14/2012 2:44:23 PM

**Electropherogram Summary Continued ...**



**Setpoint Deviations for sample 3 : HRT ES-1 (1/5)**

Height Threshold [FU] : 25

**Overall Results for sample 3 : HRT ES-1 (1/5)**

Number of peaks found: 15                      Corr. Area 1: 100.4  
 Noise: 0.3

**Peak table for sample 3 : HRT ES-1 (1/5)**

Peak	Size [bp]	Conc. [pg/µl]	Molarity [pmol/l]	Observations
1	35	125.00	5,411.3	Lower Marker
2	41	326.49	11,928.2	
3	70	307.59	6,622.5	
4	141	309.63	3,323.5	
5	152	161.58	1,614.2	
6	164	358.66	3,309.9	
7	172	144.24	1,267.9	
8	192	192.40	1,517.5	
9	209	828.40	6,017.4	
10	227	203.09	1,357.7	
11	244	260.32	1,615.1	
12	265	90.80	519.7	
13	284	895.08	4,779.5	
14	305	139.94	694.3	
15	359	102.64	433.7	
16	379	164.24	656.4	
17	10,380	75.00	10.9	Upper Marker

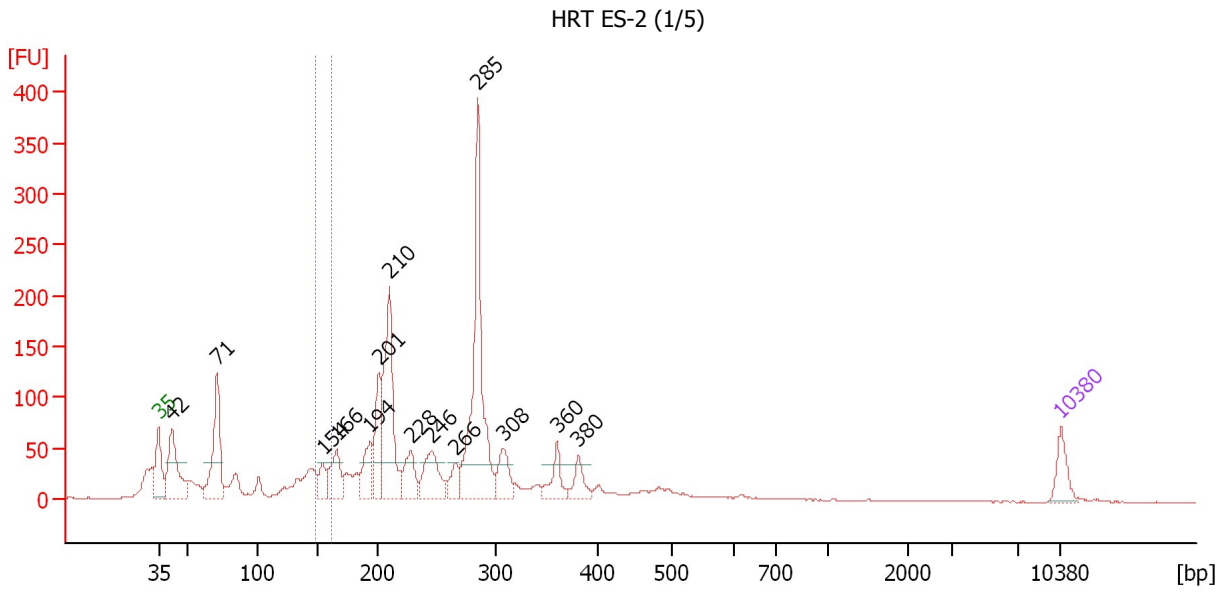
**Region table for sample 3 : HRT ES-1 (1/5)**

From [bp]	To [bp]	Average Size [bp]	Molarity [pmol/l]	Conc. [pg/µl]	Corr. Area	% of Total	Size distribution in CV [%]	Color
147	161	154	2,771.2	281.04	100.4	4	2.7	Blue

Assay Class: High Sensitivity DNA Assay  
 Data Path: C:\...ents and Settings\Bioanalyzer\2012-12-14\2012-12-14\_002.xad

Created: 12/14/2012 1:18:47 PM  
 Modified: 12/14/2012 2:44:23 PM

**Electropherogram Summary Continued ...**



**Setpoint Deviations for sample 4 : HRT ES-2 (1/5)**

Height Threshold [FU] : 35

**Overall Results for sample 4 : HRT ES-2 (1/5)**

Number of peaks found: 14                      Corr. Area 1: 72.9  
 Noise: 0.4

**Peak table for sample 4 : HRT ES-2 (1/5)**

Peak	Size [bp]	Conc. [pg/μl]	Molarity [pmol/l]	Observations
1	35	125.00	5,411.3	Lower Marker
2	42	397.75	14,383.8	
3	71	439.80	9,417.8	
4	154	101.18	996.7	
5	166	190.30	1,741.2	
6	194	174.59	1,366.6	
7	201	260.21	1,962.1	
8	210	623.80	4,503.0	
9	228	163.25	1,083.5	
10	246	235.86	1,454.4	
11	266	88.24	502.4	
12	285	929.99	4,943.7	
13	308	151.26	744.4	
14	360	113.30	477.0	
15	380	93.09	371.0	
16	10,380	75.00	10.9	Upper Marker

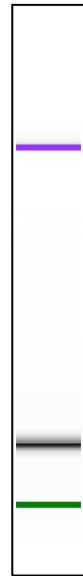
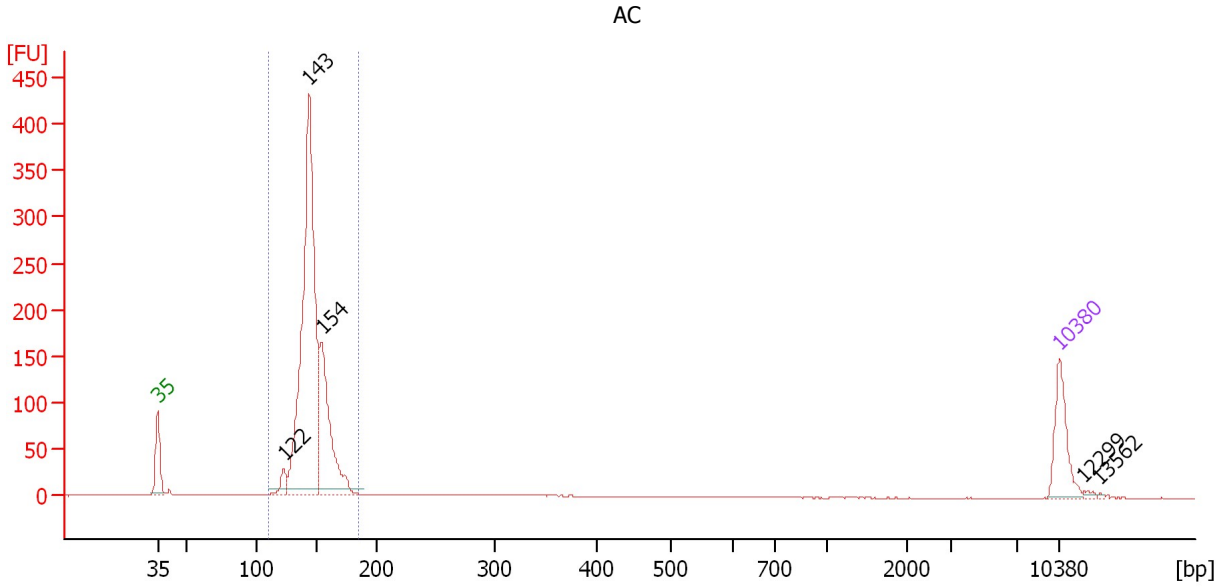
**Region table for sample 4 : HRT ES-2 (1/5)**

From [bp]	To [bp]	Average Size [bp]	Molarity [pmol/l]	Conc. [pg/μl]	Corr. Area	% of Total	Size distribution in CV [%]	Color
147	161	154	1,724.4	174.71	72.9	3	2.6	Blue

Assay Class: High Sensitivity DNA Assay  
 Data Path: C:\...ents and Settings\Bioanalyzer\2012-12-14\2012-12-14\_002.xad

Created: 12/14/2012 1:18:47 PM  
 Modified: 12/14/2012 2:44:23 PM

**Electropherogram Summary Continued ...**



**Overall Results for sample 5 : AC**

Number of peaks found: 5                      Corr. Area 1: 1,279.5  
 Noise: 0.2

**Peak table for sample 5 : AC**

Peak	Size [bp]	Conc. [pg/μl]	Molarity [pmol/l]	Observations
1	35	125.00	5,411.3	Lower Marker
2	122	30.41	377.5	
3	143	939.20	9,933.7	
4	154	305.58	3,013.7	
5	10,380	75.00	10.9	Upper Marker
6	12,299	0.00	0.0	
7	13,562	0.00	0.0	

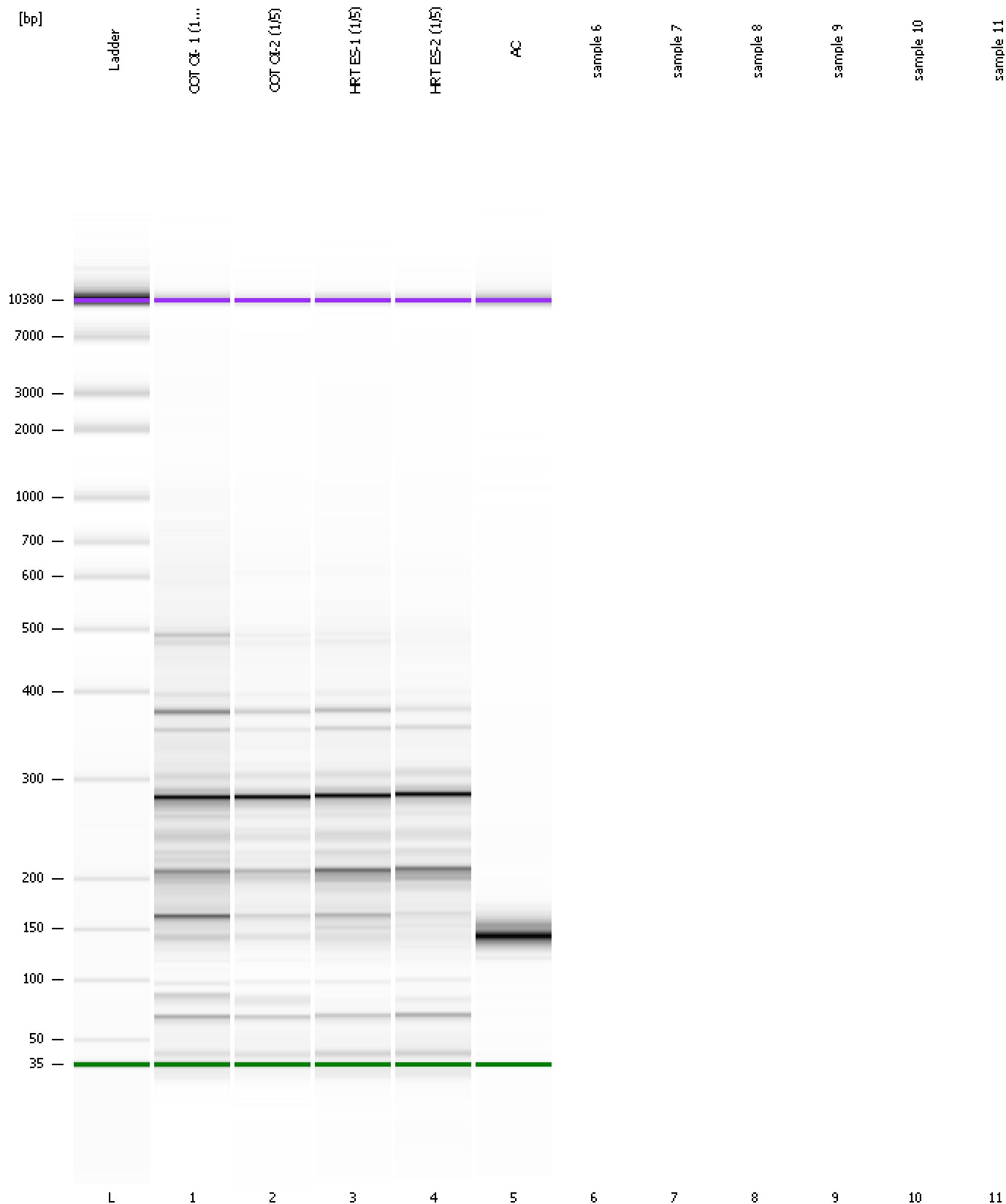
**Region table for sample 5 : AC**

From [bp]	To [bp]	Average Size [bp]	Molarity [pmol/l]	Conc. [pg/μl]	Corr. Area	% of Total	Size distribution in CV [%]	Color
110	185	146	13,600.6	1,302.87	1,279.5	91	7.2	Blue

Assay Class: High Sensitivity DNA Assay  
Data Path: C:\...ents and Settings\Bioanalyzer\2012-12-14\2012-12-14\_002.xad

Created: 12/14/2012 1:18:47 PM  
Modified: 12/14/2012 2:44:23 PM

**Gel Image**



Assay Class: High Sensitivity DNA Assay  
Data Path: C:\...ents and Settings\Bioanalyzer\2012-12-14\2012-12-14\_002.xad

Created: 12/14/2012 1:18:47 PM  
Modified: 12/14/2012 2:44:23 PM

**Invalid Samples**

Sample 6 has not been run, no results available.

Sample 7 has not been run, no results available.

Sample 8 has not been run, no results available.

Sample 9 has not been run, no results available.

Sample 10 has not been run, no results available.

Sample 11 has not been run, no results available.