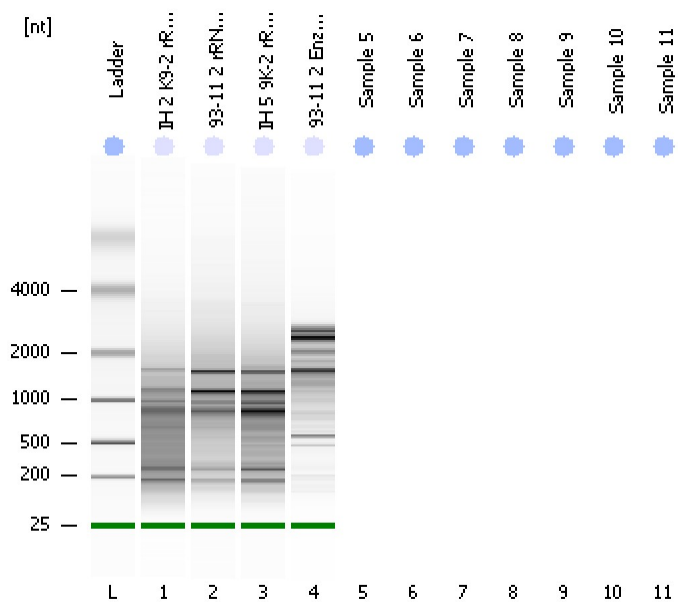


Assay Class: Eukaryote Total RNA Pico  
Data Path: C:\...ents and Settings\Bioanalyzer\2012-12-14\2012-12-14\_004.xad

Created: 12/14/2012 3:04:45 PM  
Modified: 12/14/2012 3:30:24 PM

**Electrophoresis File Run Summary**



Instrument Information:

Instrument Name: DE13701086      Firmware: C.01.069  
Serial#: DE13701086      Type: G2938B

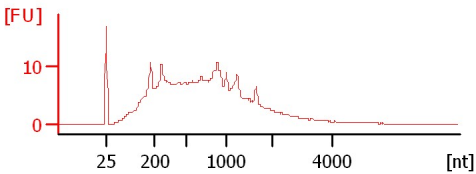
Assay Information:

Assay Origin Path: C:\Program Files\Agilent\2100 bioanalyzer\2100 expert\assays\RNA\Eukaryote Total RNA Pico Series II.xsy  
Assay Class: Eukaryote Total RNA Pico  
Version: 2.6  
Assay Comments: Total RNA Analysis pg sensitivity (Eukaryote)  
© Copyright 2003 - 2009 Agilent Technologies, Inc.

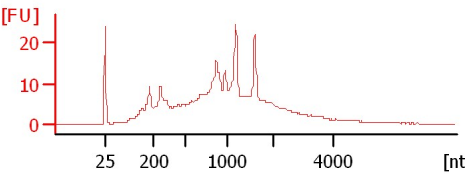
Chip Information:

Chip Lot #:      Reagent Kit Lot #:      Chip Comments:

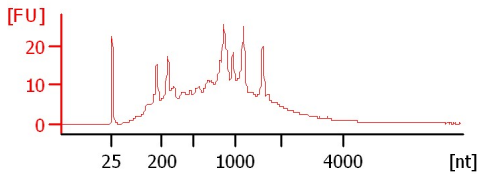
**IH 2 K9-2 rRNA depleted 1:2**  
RIN: 2.80



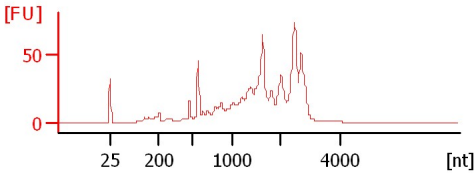
**93-11 2 rRNA depleted 1:3**  
RIN: 4



**IH 5 9K-2 rRNA depleted 1:2**  
RIN: 3.50



**93-11 2 Enzy-digested 1:8**  
RIN: 5.10



Assay Class: Eukaryote Total RNA Pico  
Data Path: C:\...ents and Settings\Bioanalyzer\2012-12-14\2012-12-14\_004.xad

Created: 12/14/2012 3:04:45 PM  
Modified: 12/14/2012 3:30:24 PM

**Electrophoresis File Run Summary (Chip Summary)**

Sample Name	Sample Comment	Status	Result Label	Result Color
IH 2 K9-2 rRNA depleted 1:2		✓	RIN: 2.80	
93-11 2 rRNA depleted 1:3		✓	RIN:4	
IH 5 9K-2 rRNA depleted 1:2		✓	RIN: 3.50	
93-11 2 Enzy-digested 1:8		✓	RIN: 5.10	
Sample 5				
Sample 6				
Sample 7				
Sample 8				
Sample 9				
Sample 10				
Sample 11				
Ladder		✓	All Other Samples	

**Chip Lot #**

**Reagent Kit Lot #**

**Chip Comments :**

Assay Class: Eukaryote Total RNA Pico  
Data Path: C:\...ents and Settings\Bioanalyzer\2012-12-14\2012-12-14\_004.xad

Created: 12/14/2012 3:04:45 PM  
Modified: 12/14/2012 3:30:24 PM

## Electrophoresis Assay Details

### General Analysis Settings

Number of Available Sample and Ladder Wells (Max.) : 12

Minimum Visible Range [s] : 17

Maximum Visible Range [s] : 70

Start Analysis Time Range [s] : 18

End Analysis Time Range [s] : 69

Ladder Concentration [pg/ $\mu$ l] : 1000

Lower Marker Concentration [pg/ $\mu$ l] : 0

Upper Marker Concentration [pg/ $\mu$ l] : 0

Used Lower Marker for Quantitation

Standard Curve Fit is Logarithmic

Show Data Aligned to Lower Marker

### Integrator Settings

Integration Start Time [s] : 18

Integration End Time [s] : 69

Slope Threshold : 0.6

Height Threshold [FU] : 0.5

Area Threshold : 0.2

Width Threshold [s] : 0.3

Baseline Plateau [s] : 6

### Filter Settings

Filter Width [s] : 0.5

Polynomial Order : 4

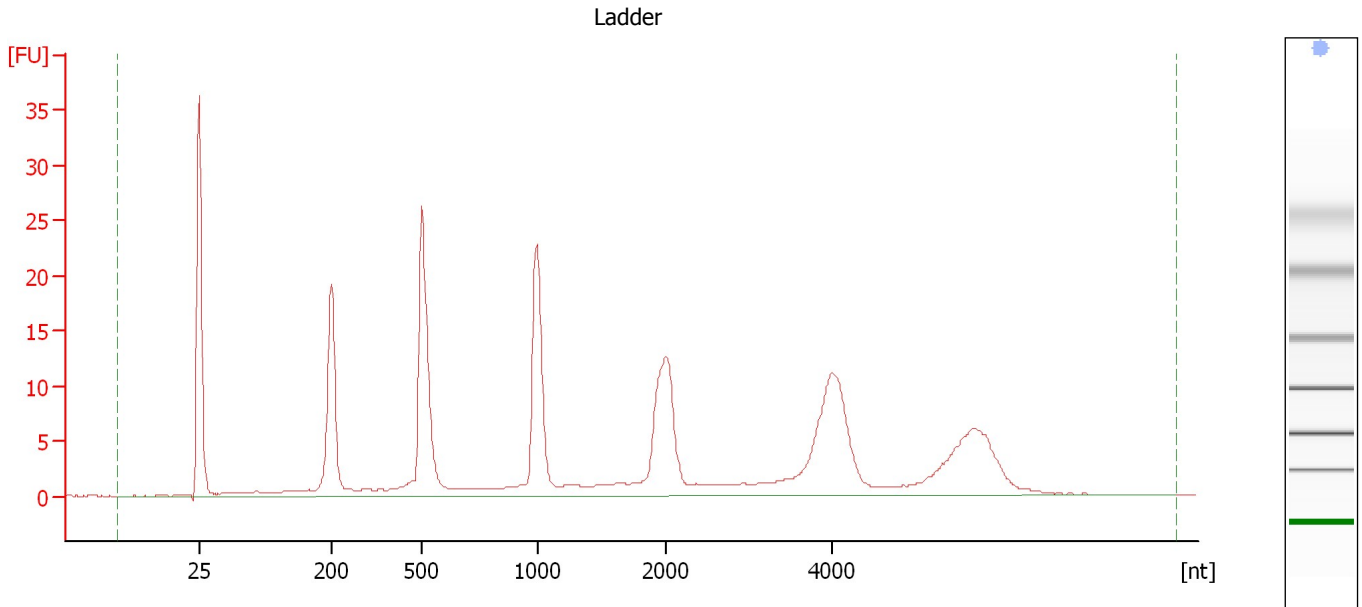
### Ladder

Ladder Peak	Size
1	25
2	200
3	500
4	1000
5	2000
6	4000

Assay Class: Eukaryote Total RNA Pico  
Data Path: C:\...ents and Settings\Bioanalyzer\2012-12-14\2012-12-14\_004.xad

Created: 12/14/2012 3:04:45 PM  
Modified: 12/14/2012 3:30:24 PM

**Electropherogram Summary**



**Overall Results for Ladder**

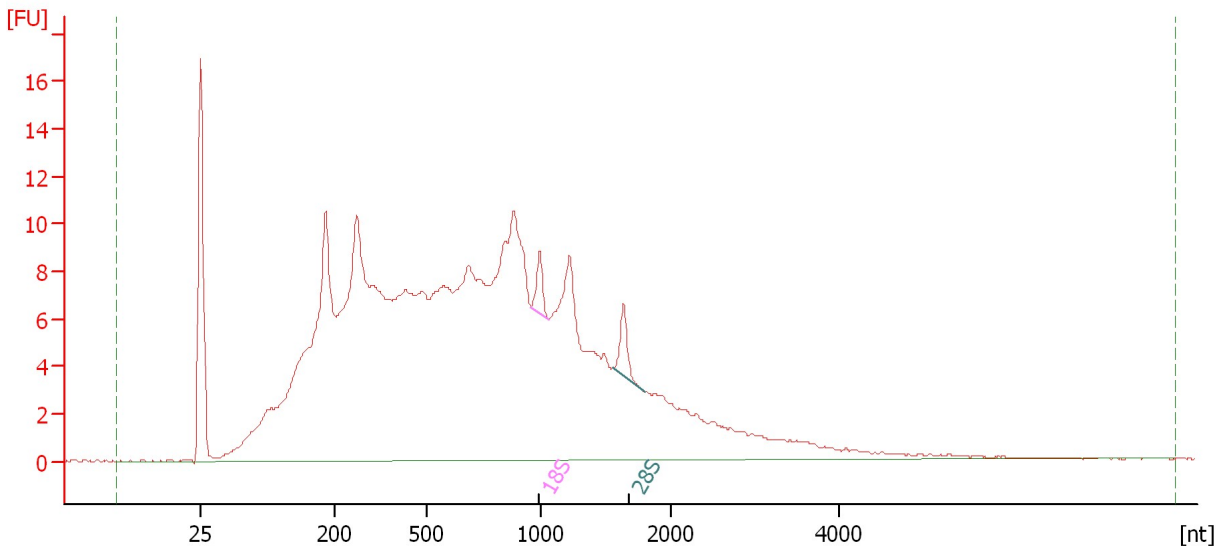
RNA Area:	229.8	Result Flagging Color:	<span style="background-color: #add8e6; border: 1px solid black; display: inline-block; width: 20px; height: 10px;"></span>
RNA Concentration:	1,000 pg/μl	Result Flagging Label:	All Other Samples

Assay Class: Eukaryote Total RNA Pico  
Data Path: C:\...ents and Settings\Bioanalyzer\2012-12-14\2012-12-14\_004.xad

Created: 12/14/2012 3:04:45 PM  
Modified: 12/14/2012 3:30:24 PM

**Electropherogram Summary Continued ...**

IH 2 K9-2 rRNA depleted 1:2



**Overall Results for sample 1 : IH 2 K9-2 rRNA depleted 1:2**

RNA Area: 364.1 RNA Integrity Number (RIN): 2.8 (B.02.08)  
RNA Concentration: 1,584 pg/μl Result Flagging Color:   
rRNA Ratio [28s / 18s]: 1.3 Result Flagging Label: RIN: 2.80

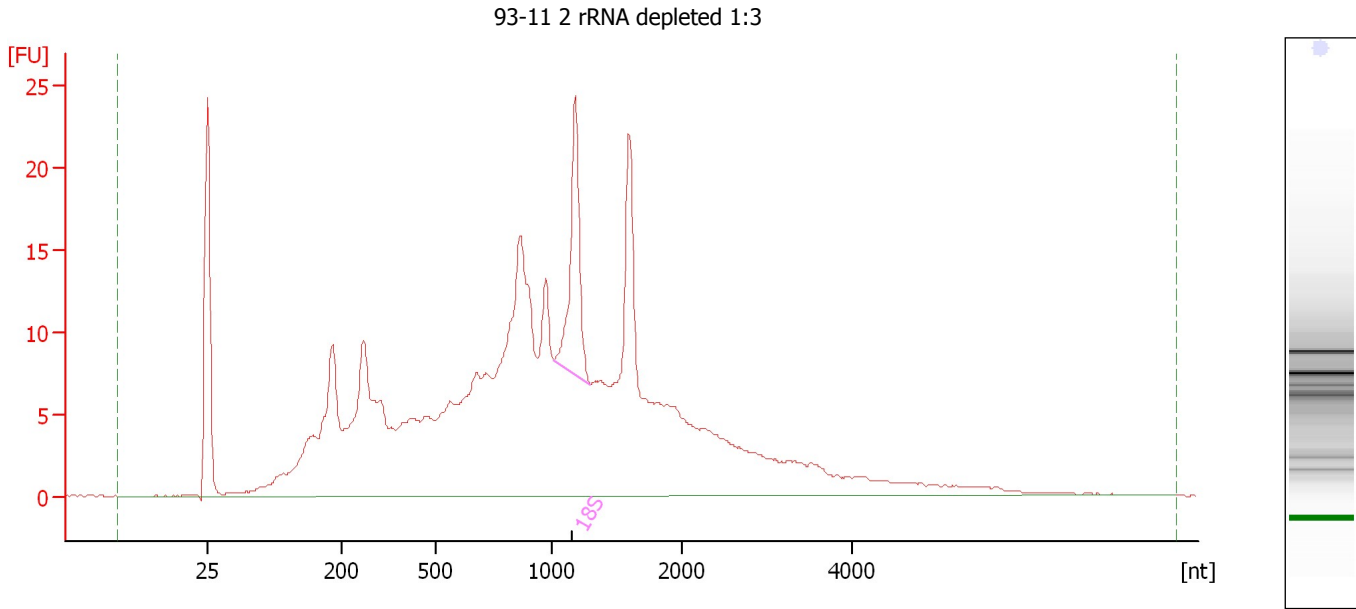
**Fragment table for sample 1 : IH 2 K9-2 rRNA depleted 1:2**

Name	Start Size [nt]	End Size [nt]	Area	% of total Area
18S	958	1,057	2.1	0.6
28S	1,549	1,796	2.8	0.8

Assay Class: Eukaryote Total RNA Pico  
Data Path: C:\...ents and Settings\Bioanalyzer\2012-12-14\2012-12-14\_004.xad

Created: 12/14/2012 3:04:45 PM  
Modified: 12/14/2012 3:30:24 PM

**Electropherogram Summary Continued ...**



**Overall Results for sample 2 : 93-11 2 rRNA depleted 1:3**

RNA Area:	413.3	RNA Integrity Number (RIN):	4 (B.02.08)
RNA Concentration:	1,799 pg/μl	Result Flagging Color:	<span style="background-color: #ccccff; border: 1px solid black; display: inline-block; width: 20px; height: 10px;"></span>
rRNA Ratio [28s / 18s]:	0.0	Result Flagging Label:	RIN:4

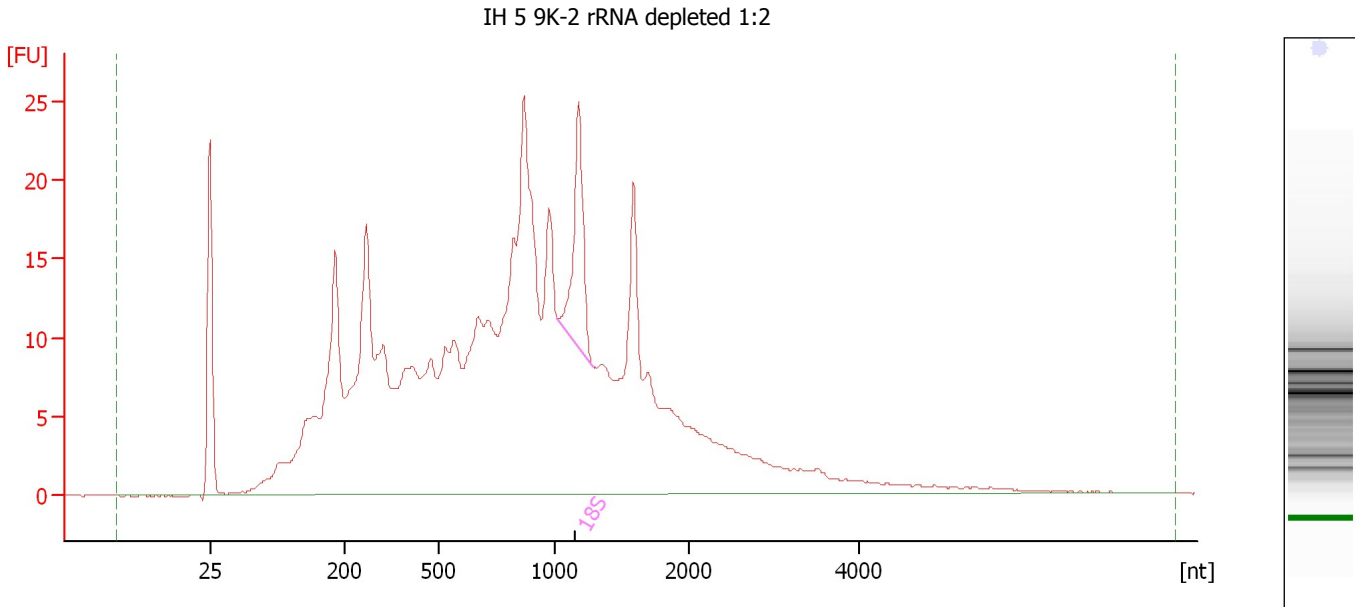
**Fragment table for sample 2 : 93-11 2 rRNA depleted 1:3**

Name	Start Size [nt]	End Size [nt]	Area	% of total Area
18S	1,020	1,297	20.7	5.0

Assay Class: Eukaryote Total RNA Pico  
Data Path: C:\...ents and Settings\Bioanalyzer\2012-12-14\2012-12-14\_004.xad

Created: 12/14/2012 3:04:45 PM  
Modified: 12/14/2012 3:30:24 PM

**Electropherogram Summary Continued ...**



**Overall Results for sample 3 : IH 5 9K-2 rRNA depleted 1:2**

RNA Area:	541.4	RNA Integrity Number (RIN):	3.5 (B.02.08)
RNA Concentration:	2,356 pg/μl	Result Flagging Color:	<span style="background-color: #ccccff; border: 1px solid black; display: inline-block; width: 20px; height: 10px;"></span>
rRNA Ratio [28s / 18s]:	0.0	Result Flagging Label:	RIN: 3.50

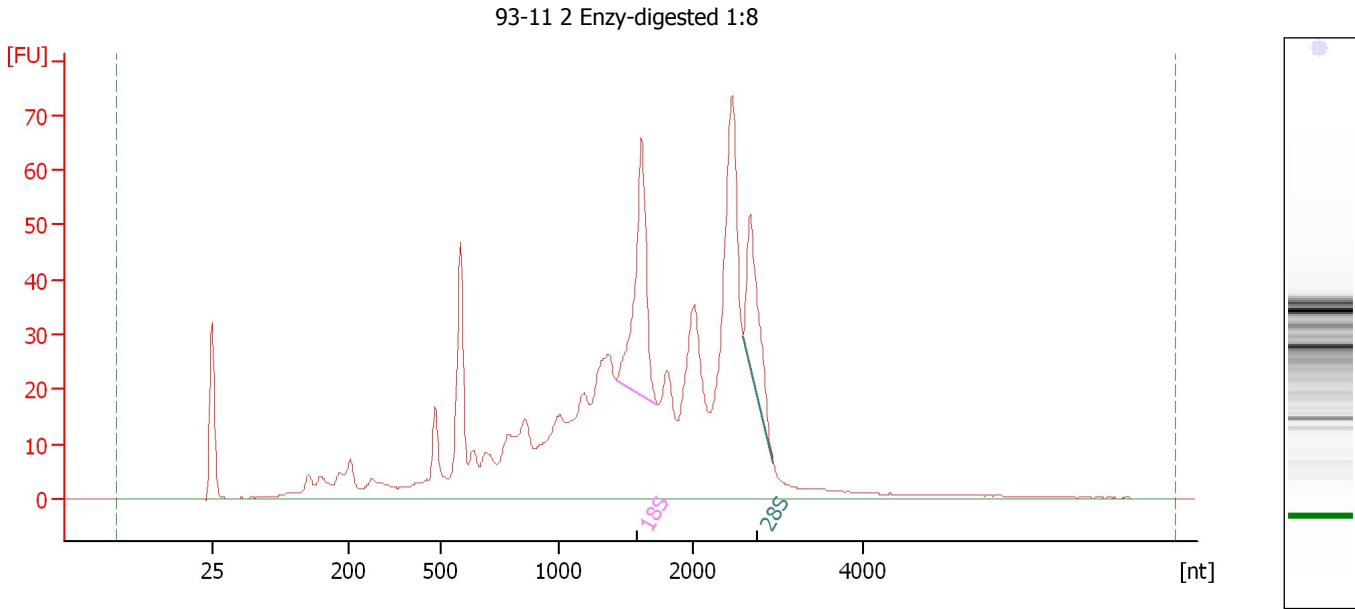
**Fragment table for sample 3 : IH 5 9K-2 rRNA depleted 1:2**

Name	Start Size [nt]	End Size [nt]	Area	% of total Area
18S	1,012	1,278	19.0	3.5

Assay Class: Eukaryote Total RNA Pico  
Data Path: C:\...ents and Settings\Bioanalyzer\2012-12-14\2012-12-14\_004.xad

Created: 12/14/2012 3:04:45 PM  
Modified: 12/14/2012 3:30:24 PM

**Electropherogram Summary Continued ...**



**Overall Results for sample 4 : 93-11 2 Enzy-digested 1:8**

RNA Area: 880.7 RNA Integrity Number (RIN): 5.1 (B.02.08)  
RNA Concentration: 3,832 pg/μl Result Flagging Color:   
rRNA Ratio [28s / 18s]: 0.6 Result Flagging Label: RIN: 5.10

**Fragment table for sample 4 : 93-11 2 Enzy-digested 1:8**

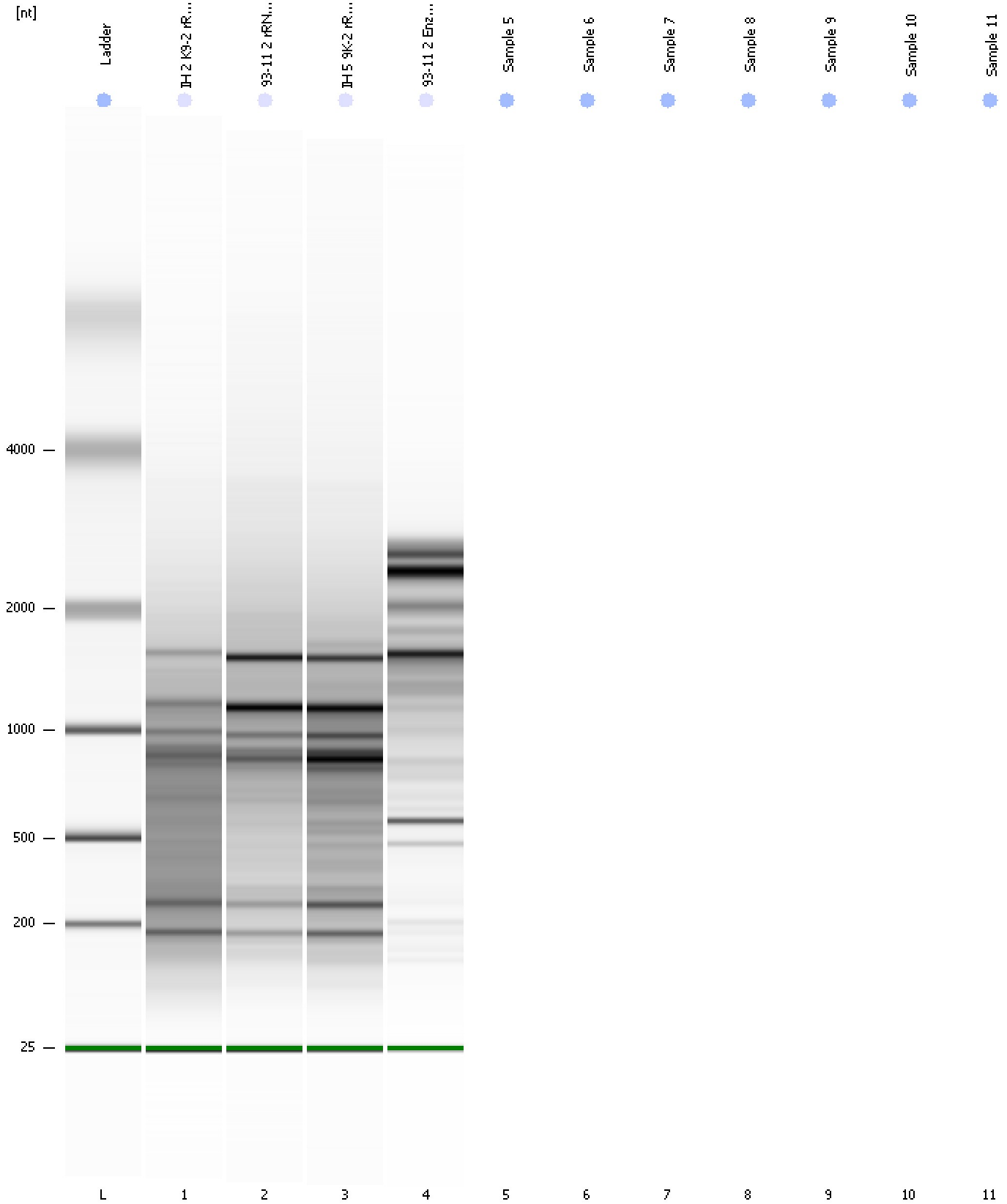
Name	Start Size [nt]	End Size [nt]	Area	% of total Area
18S	1,427	1,741	64.1	7.3
28S	2,596	2,945	37.6	4.3



Assay Class: Eukaryote Total RNA Pico  
Data Path: C:\...ents and Settings\Bioanalyzer\2012-12-14\2012-12-14\_004.xad

Created: 12/14/2012 3:04:45 PM  
Modified: 12/14/2012 3:30:24 PM

**Gel Image**



Assay Class: Eukaryote Total RNA Pico  
Data Path: C:\...ents and Settings\Bioanalyzer\2012-12-14\2012-12-14\_004.xad

Created: 12/14/2012 3:04:45 PM  
Modified: 12/14/2012 3:30:24 PM

**Invalid Samples**

- Sample 5 has not been run, no results available.
- Sample 6 has not been run, no results available.
- Sample 7 has not been run, no results available.
- Sample 8 has not been run, no results available.
- Sample 9 has not been run, no results available.
- Sample 10 has not been run, no results available.
- Sample 11 has not been run, no results available.