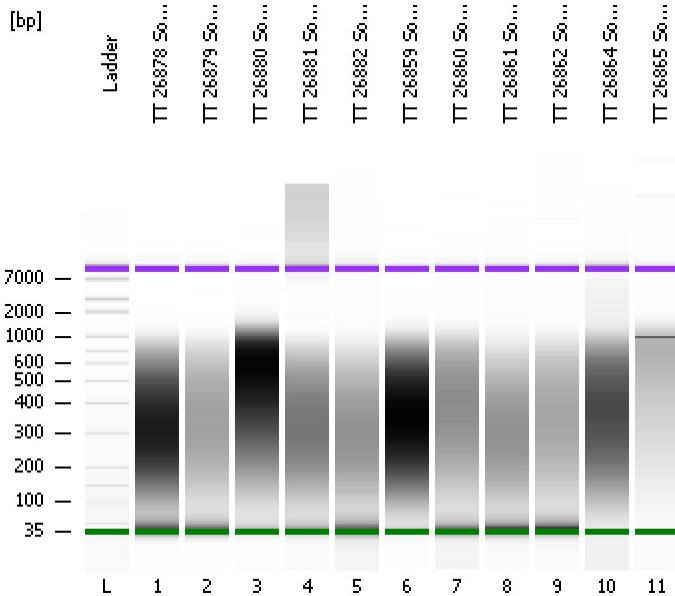


Assay Class: High Sensitivity DNA Assay  
Data Path: C:\...ents and Settings\Bioanalyzer\2012-12-17\2012-12-17\_001.xad

Created: 12/17/2012 9:54:22 AM  
Modified: 12/17/2012 10:38:09 AM

**Electrophoresis File Run Summary**



Instrument Information:

Instrument Name: DE13701086      Firmware: C.01.069  
Serial#: DE13701086      Type: G2938B

Assay Information:

Assay Origin Path: C:\Program Files\Agilent\2100 bioanalyzer\2100 expert\assays\dsDNA\High Sensitivity DNA.xsy  
Assay Class: High Sensitivity DNA Assay  
Version: 1.03  
Assay Comments: Copyright © 2003-2010 Agilent Technologies

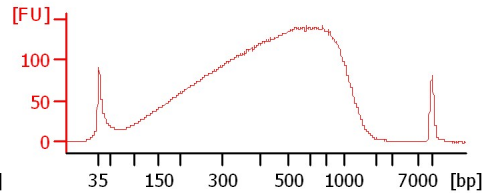
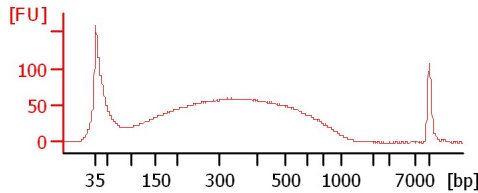
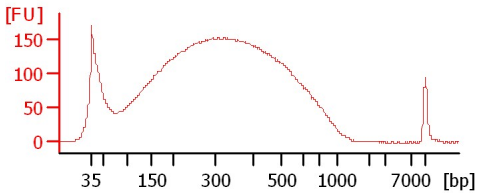
Chip Information:

Chip Lot #:   
Reagent Kit Lot #:   
Chip Comments:

TT 26878 Soni 1:8

TT 26879 Soni 1:8

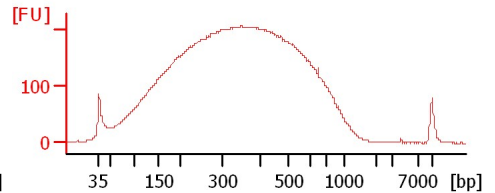
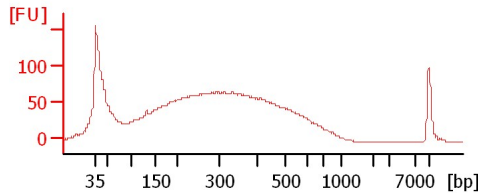
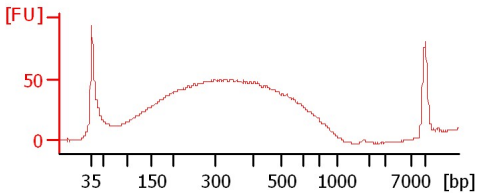
TT 26880 Soni 1:8



TT 26881 Soni 1:8

TT 26882 Soni 1:8

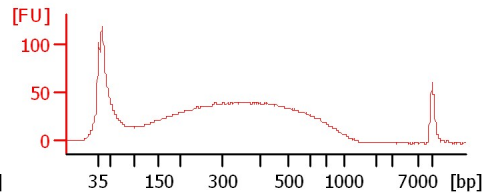
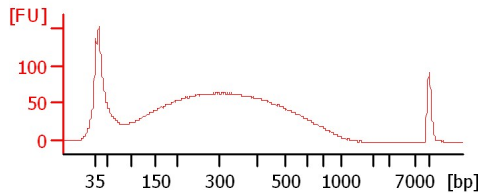
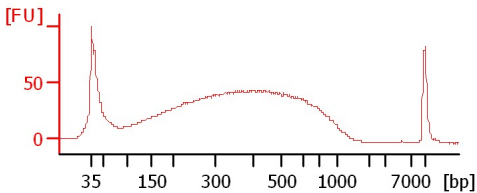
TT 26859 Soni 1:8



TT 26860 Soni 1:8

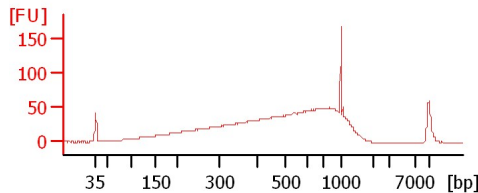
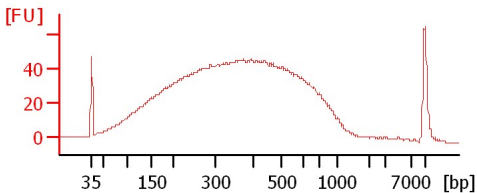
TT 26861 Soni 1:8

TT 26862 Soni 1:8



TT 26864 Soni 1:8

TT 26865 Soni 1:8



Assay Class: High Sensitivity DNA Assay  
 Data Path: C:\...ents and Settings\Bioanalyzer\2012-12-17\2012-12-17\_001.xad

Created: 12/17/2012 9:54:22 AM  
 Modified: 12/17/2012 10:38:09 AM

**Electrophoresis File Run Summary (Chip Summary)**

Sample Name	Sample Comment	Rest. Digest	Status	Observation	Result Label	Result Color
TT 26878 Soni 1:8		<input type="checkbox"/>	✓			
TT 26879 Soni 1:8		<input type="checkbox"/>	✓			
TT 26880 Soni 1:8		<input type="checkbox"/>	✓			
TT 26881 Soni 1:8		<input type="checkbox"/>	✓			
TT 26882 Soni 1:8		<input type="checkbox"/>	✓			
TT 26859 Soni 1:8		<input type="checkbox"/>	✓			
TT 26860 Soni 1:8		<input type="checkbox"/>	✓			
TT 26861 Soni 1:8		<input type="checkbox"/>	✓			
TT 26862 Soni 1:8		<input type="checkbox"/>	✓			
TT 26864 Soni 1:8		<input type="checkbox"/>	✓			
TT 26865 Soni 1:8		<input type="checkbox"/>	✓			
Ladder		<input type="checkbox"/>	✓			

**Chip Lot #**

**Reagent Kit Lot #**

**Chip Comments :**

Assay Class: High Sensitivity DNA Assay  
Data Path: C:\...ents and Settings\Bioanalyzer\2012-12-17\2012-12-17\_001.xad

Created: 12/17/2012 9:54:22 AM  
Modified: 12/17/2012 10:38:09 AM

**Electrophoresis Assay Details**

**General Analysis Settings**

Number of Available Sample and Ladder Wells (Max.) : 12  
Minimum Visible Range [s] : 32  
Maximum Visible Range [s] : 138  
Start Analysis Time Range [s] : 33  
End Analysis Time Range [s] : 137.5  
Ladder Concentration [pg/μl] : 1950  
Uses Standard Area for Ladder Fragments  
Lower Marker Concentration [pg/μl] : 125  
Upper Marker Concentration [pg/μl] : 75  
Used Upper Marker for Quantitation  
Standard Curve Fit is Point to Point  
Show Data Aligned to Lower and Upper Marker

**Integrator Settings**

Integration Start Time [s] : 33.05  
Integration End Time [s] : 137  
Slope Threshold : 0.8  
Height Threshold [FU] : 5  
Area Threshold : 0.1  
Width Threshold [s] : 0.6  
Baseline Plateau [s] : 0.5

**Filter Settings**

Filter Width [s] : 0.5  
Polynomial Order : 4

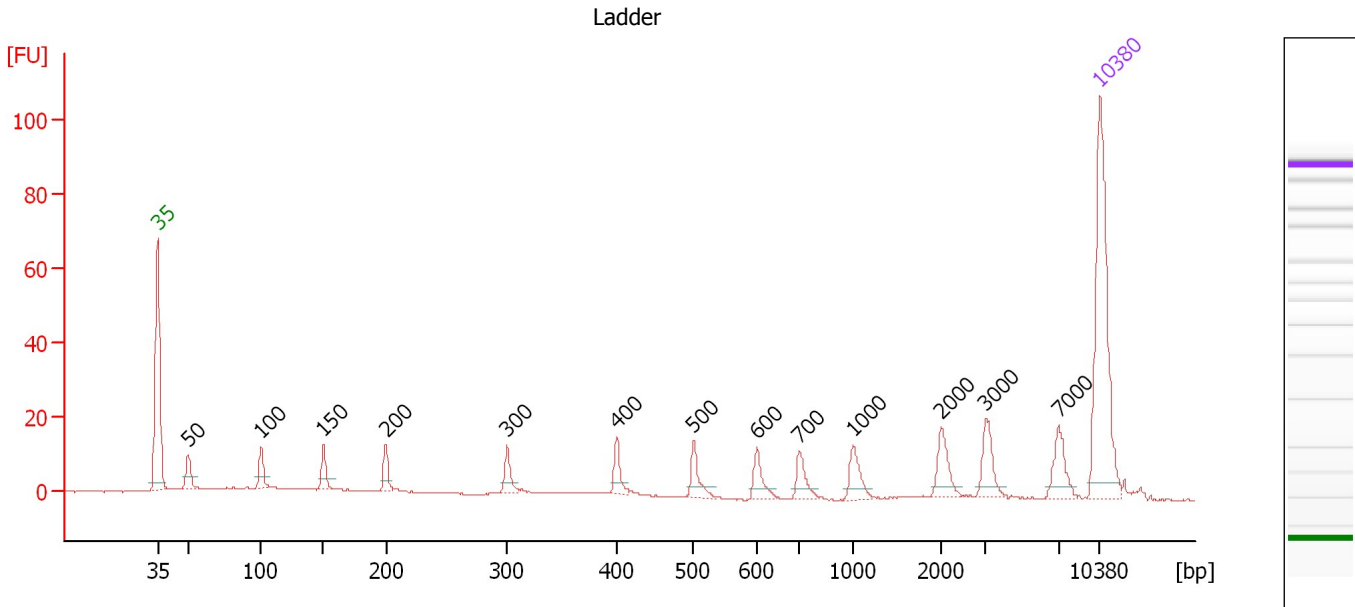
**Ladder**

Ladder Peak	Size	Area
1	35	160
2	50	210
3	100	208
4	150	221
5	200	242
6	300	270
7	400	305
8	500	306
9	600	336
10	700	321
11	1000	366
12	2000	413
13	3000	411
14	7000	400
15	10380	214

Assay Class: High Sensitivity DNA Assay  
 Data Path: C:\...ents and Settings\Bioanalyzer\2012-12-17\2012-12-17\_001.xad

Created: 12/17/2012 9:54:22 AM  
 Modified: 12/17/2012 10:38:09 AM

**Electropherogram Summary**



**Overall Results for Ladder**

Noise: 0.1

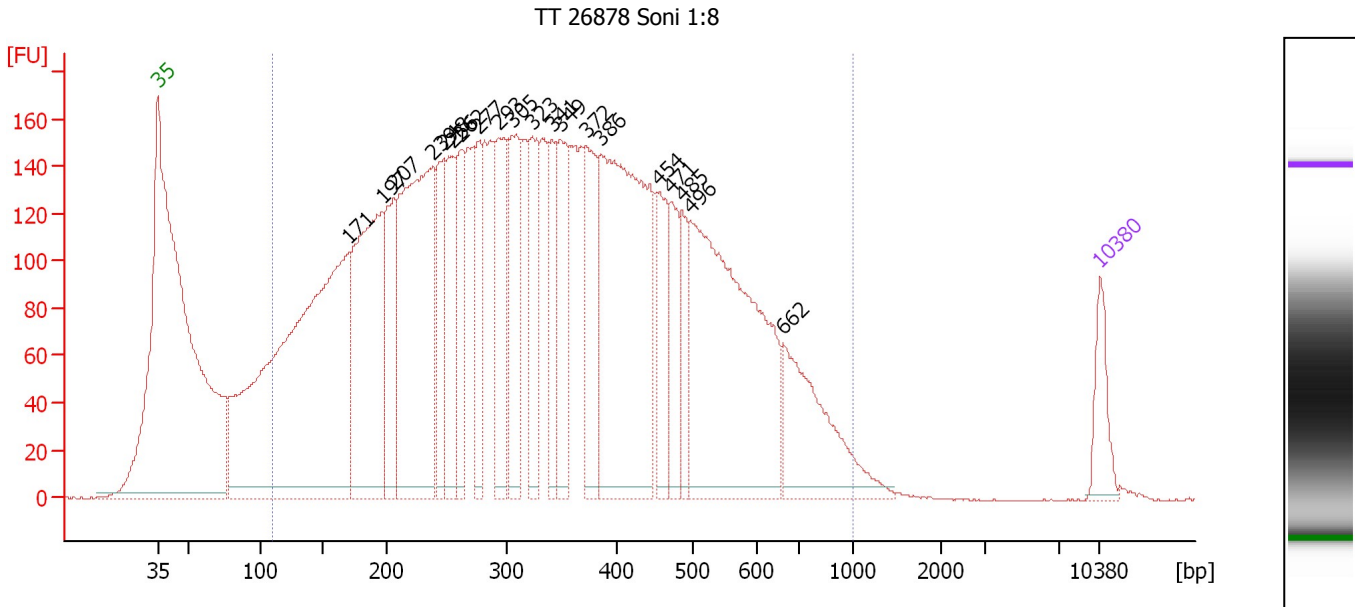
**Peak table for Ladder**

Peak	Size [bp]	Conc. [pg/μl]	Molarity [pmol/l]	Observations
1	35	125.00	5,411.3	Lower Marker
2	50	150.00	4,545.5	Ladder Peak
3	100	150.00	2,272.7	Ladder Peak
4	150	150.00	1,515.2	Ladder Peak
5	200	150.00	1,136.4	Ladder Peak
6	300	150.00	757.6	Ladder Peak
7	400	150.00	568.2	Ladder Peak
8	500	150.00	454.5	Ladder Peak
9	600	150.00	378.8	Ladder Peak
10	700	150.00	324.7	Ladder Peak
11	1,000	150.00	227.3	Ladder Peak
12	2,000	150.00	113.6	Ladder Peak
13	3,000	150.00	75.8	Ladder Peak
14	7,000	150.00	32.5	Ladder Peak
15	10,380	75.00	10.9	Upper Marker

Assay Class: High Sensitivity DNA Assay  
 Data Path: C:\...ents and Settings\Bioanalyzer\2012-12-17\2012-12-17\_001.xad

Created: 12/17/2012 9:54:22 AM  
 Modified: 12/17/2012 10:38:09 AM

**Electropherogram Summary Continued ...**



**Overall Results for sample 1 : TT 26878 Soni 1:8**

Number of peaks found: 20                      Corr. Area 1: 7,174.4  
 Noise: 0.2

**Peak table for sample 1 : TT 26878 Soni 1:8**

Peak	Size [bp]	Conc. [pg/μl]	Molarity [pmol/l]	Observations
1	35	125.00	5,411.3	Lower Marker
2	171	1,836.61	16,319.3	
3	197	757.56	5,838.4	
4	207	292.10	2,141.8	
5	239	882.33	5,603.7	
6	248	224.93	1,376.0	
7	256	268.14	1,588.2	
8	262	208.59	1,204.5	
9	277	191.53	1,049.2	
10	293	272.19	1,406.1	
11	305	293.67	1,456.6	
12	323	199.94	938.3	
13	341	164.72	732.4	
14	349	248.00	1,077.9	
15	372	252.12	1,026.5	
16	386	940.75	3,696.8	
17	454	160.69	535.7	
18	471	153.62	494.0	
19	485	114.62	358.2	
20	496	951.11	2,905.6	
21	662	323.83	740.9	
22	10,380	75.00	10.9	Upper Marker

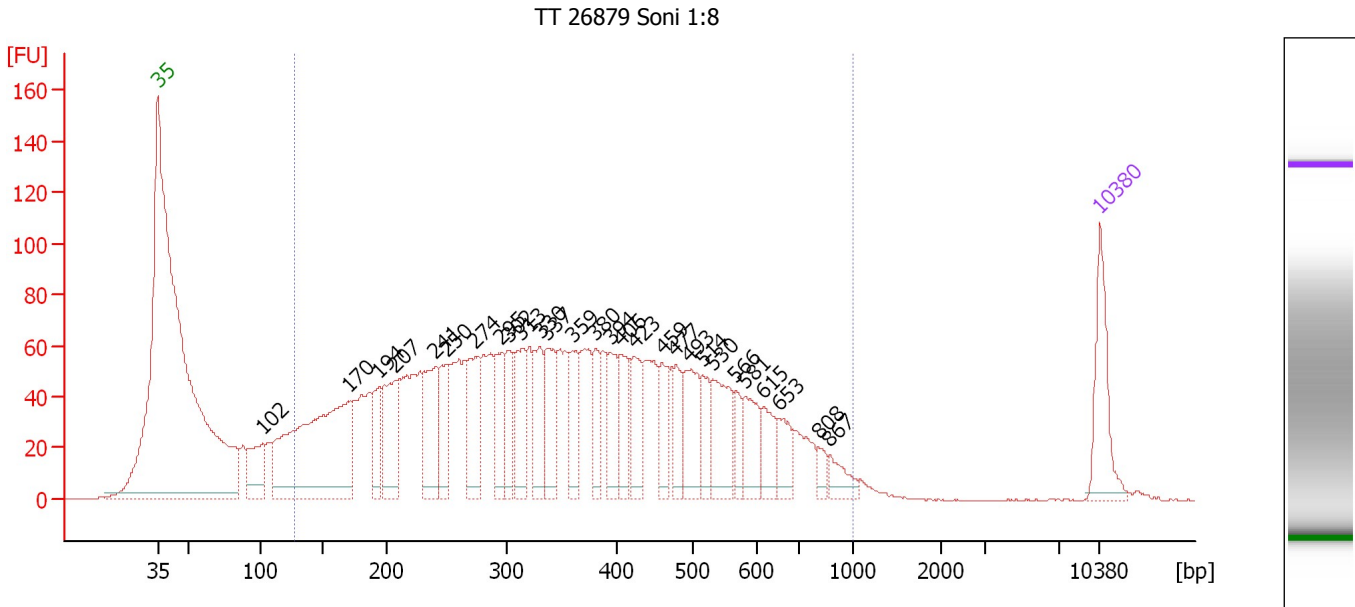
**Region table for sample 1 : TT 26878 Soni 1:8**

From [bp]	To [bp]	Average Size [bp]	Molarity [pmol/l]	Conc. [pg/μl]	Corr. Area	% of Total	Size distribution in CV [%]	Color
110	1,000	355	56,516.6	9,672.10	7,174.4	95	44.8	Blue

Assay Class: High Sensitivity DNA Assay  
 Data Path: C:\...ents and Settings\Bioanalyzer\2012-12-17\2012-12-17\_001.xad

Created: 12/17/2012 9:54:22 AM  
 Modified: 12/17/2012 10:38:09 AM

**Electropherogram Summary Continued ...**



**Overall Results for sample 2 : TT 26879 Soni 1:8**

Number of peaks found: 28                      Corr. Area 1: 2,708.3  
 Noise: 0.2

**Peak table for sample 2 : TT 26879 Soni 1:8**

Peak	Size [bp]	Conc. [pg/μl]	Molarity [pmol/l]	Observations
1	35	125.00	5,411.3	Lower Marker
2	102	86.50	1,289.4	
3	170	468.70	4,173.1	
4	194	62.79	490.8	
5	207	126.67	926.4	
6	241	120.22	756.1	
7	250	80.62	489.2	
8	274	100.28	555.4	
9	295	73.61	377.6	
10	302	63.71	319.9	
11	313	91.27	442.2	
12	330	78.61	360.4	
13	337	91.00	409.4	
14	359	68.12	287.4	
15	380	53.03	211.3	
16	394	65.70	252.6	
17	406	67.38	251.7	
18	423	68.83	246.7	
19	459	50.45	166.4	
20	477	58.29	185.3	
21	493	83.68	257.2	
22	514	46.19	136.1	
23	530	92.75	265.1	
24	566	32.48	87.0	
25	581	60.79	158.4	
26	615	45.23	111.4	

Assay Class: High Sensitivity DNA Assay  
 Data Path: C:\...ents and Settings\Bioanalyzer\2012-12-17\2012-12-17\_001.xad


Created: 12/17/2012 9:54:22 AM  
 Modified: 12/17/2012 10:38:09 AM

### Electropherogram Summary Continued ...

#### ... Peak table for sample 2 : TT 26879 Soni 1:8

Peak	Size [bp]	Conc. [pg/μl]	Molarity [pmol/l]	Observations
27	653	40.31	93.5	
28	808	15.34	28.8	
29	867	27.08	47.3	
30	10,380	75.00	10.9	Upper Marker

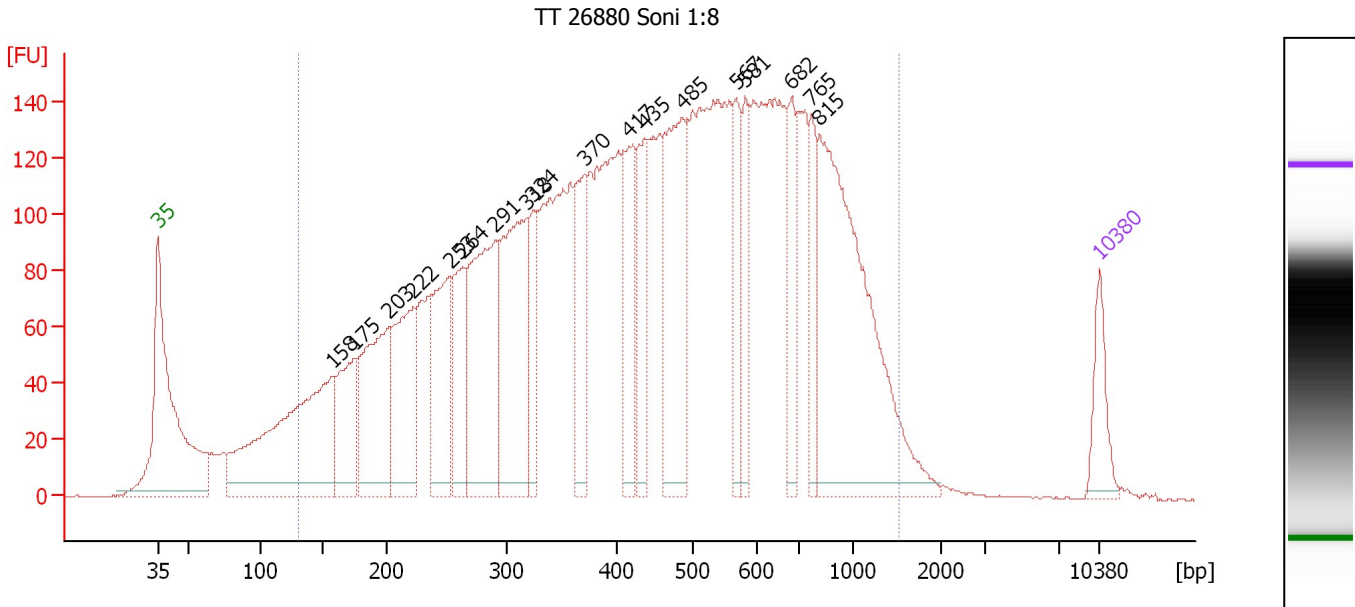
#### Region table for sample 2 : TT 26879 Soni 1:8

From [bp]	To [bp]	Average Size [bp]	Molarity [pmol/l]	Conc. [pg/μl]	Corr. Area	% of Total	Size distribution in CV [%]	Color
127	1,000	373	17,708.3	3,260.06	2,708.3	93	43.6	

Assay Class: High Sensitivity DNA Assay  
 Data Path: C:\...ents and Settings\Bioanalyzer\2012-12-17\2012-12-17\_001.xad

Created: 12/17/2012 9:54:22 AM  
 Modified: 12/17/2012 10:38:09 AM

**Electropherogram Summary Continued ...**



**Overall Results for sample 3 : TT 26880 Soni 1:8**

Number of peaks found: 18      Corr. Area 1: 5,867.5  
 Noise: 0.2

**Peak table for sample 3 : TT 26880 Soni 1:8**

Peak	Size [bp]	Conc. [pg/μl]	Molarity [pmol/l]	Observations
1	35	125.00	5,411.3	Lower Marker
2	158	770.44	7,393.9	
3	175	255.05	2,210.2	
4	203	404.55	3,024.1	
5	222	341.18	2,325.6	
6	253	284.46	1,703.6	
7	264	217.78	1,251.8	
8	291	500.98	2,612.0	
9	318	475.16	2,266.0	
10	324	139.71	654.2	
11	370	215.29	880.7	
12	417	228.71	831.0	
13	435	196.43	683.6	
14	485	428.28	1,336.9	
15	567	135.40	361.8	
16	581	132.74	346.1	
17	682	139.66	310.3	
18	765	127.72	253.0	
19	815	767.01	1,425.9	
20	10,380	75.00	10.9	Upper Marker

**Region table for sample 3 : TT 26880 Soni 1:8**

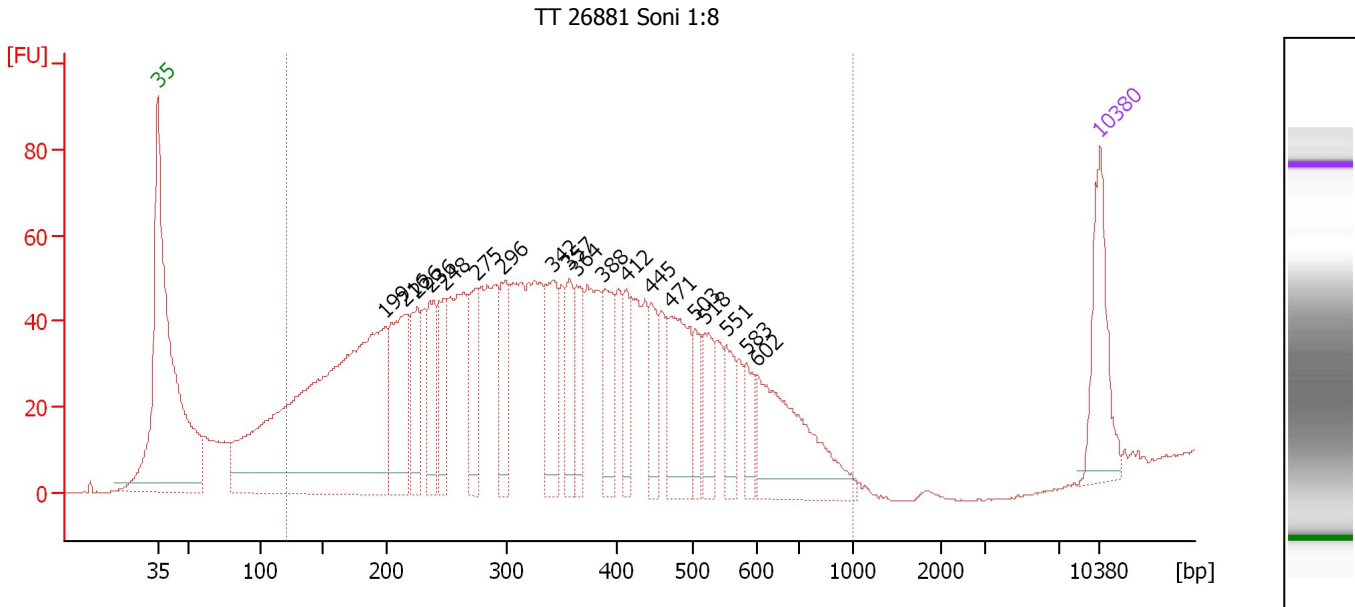
From [bp]	To [bp]	Average Size [bp]	Molarity [pmol/l]	Conc. [pg/μl]	Corr. Area	% of Total	Size distribution in CV [%]	Color
129	1,511	495	38,591.3	8,660.32	5,867.5	94	50.8	Blue



Assay Class: High Sensitivity DNA Assay  
 Data Path: C:\...ents and Settings\Bioanalyzer\2012-12-17\2012-12-17\_001.xad

Created: 12/17/2012 9:54:22 AM  
 Modified: 12/17/2012 10:38:09 AM

**Electropherogram Summary Continued ...**



**Overall Results for sample 4 : TT 26881 Soni 1:8**

Number of peaks found: 19                      Corr. Area 1: 1,891.0  
 Noise: 0.2

**Peak table for sample 4 : TT 26881 Soni 1:8**

Peak	Size [bp]	Conc. [pg/μl]	Molarity [pmol/l]	Observations
1	35	125.00	5,411.3	Lower Marker
2	199	766.50	5,823.1	
3	216	158.38	1,110.6	
4	226	85.94	576.8	
5	236	76.80	492.1	
6	248	66.05	403.9	
7	275	74.93	412.6	
8	296	78.63	402.4	
9	342	97.06	430.1	
10	357	55.48	235.6	
11	364	57.70	240.3	
12	388	72.96	285.2	
13	412	51.17	188.2	
14	445	53.09	180.8	
15	471	117.39	377.5	
16	503	35.91	108.2	
17	518	52.88	154.6	
18	551	45.21	124.3	
19	583	28.76	74.8	
20	602	158.07	398.1	
21	10,380	75.00	10.9	Upper Marker

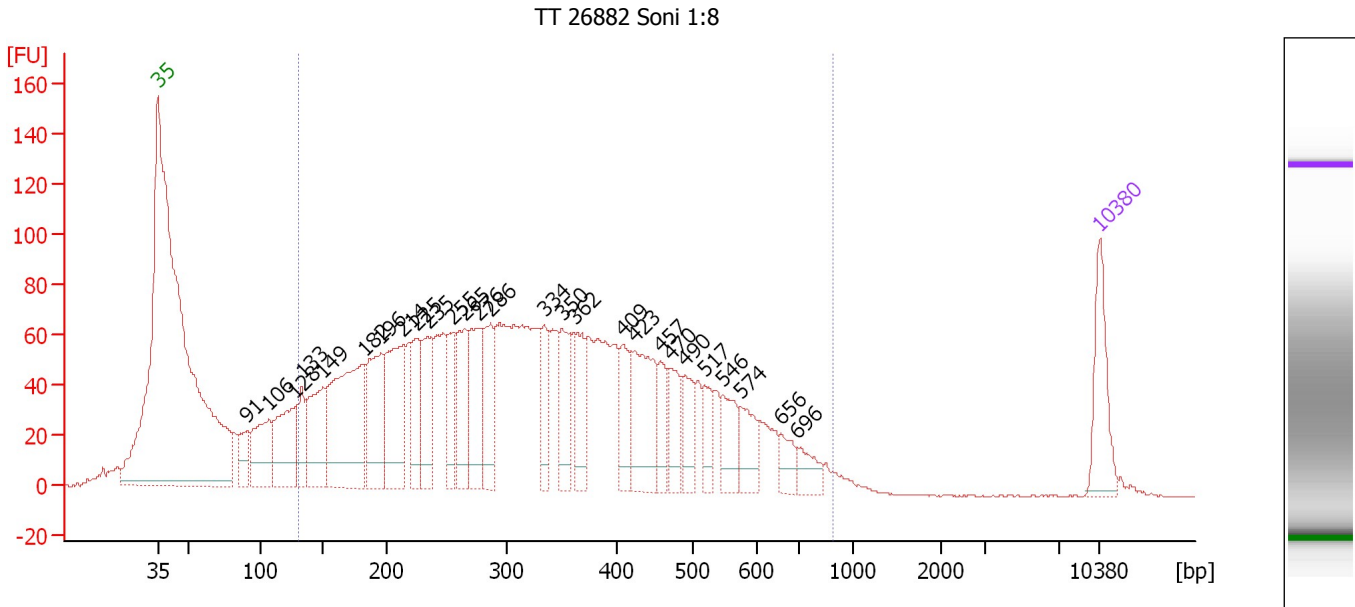
**Region table for sample 4 : TT 26881 Soni 1:8**

From [bp]	To [bp]	Average Size [bp]	Molarity [pmol/l]	Conc. [pg/μl]	Corr. Area	% of Total	Size distribution in CV [%]	Color
120	1,000	341	14,884.2	2,589.48	1,891.0	92	39.6	Blue

Assay Class: High Sensitivity DNA Assay  
 Data Path: C:\...ents and Settings\Bioanalyzer\2012-12-17\2012-12-17\_001.xad

Created: 12/17/2012 9:54:22 AM  
 Modified: 12/17/2012 10:38:09 AM

**Electropherogram Summary Continued ...**



**Setpoint Deviations for sample 5 : TT 26882 Soni 1:8**

Height Threshold [FU] : 10

**Overall Results for sample 5 : TT 26882 Soni 1:8**

Number of peaks found: 27                      Corr. Area 1: 2,774.6  
 Noise: 0.2

**Peak table for sample 5 : TT 26882 Soni 1:8**

Peak	Size [bp]	Conc. [pg/μl]	Molarity [pmol/l]	Observations
1	35	125.00	5,411.3	Lower Marker
2	91	53.21	890.5	
3	106	128.94	1,842.2	
4	128	158.55	1,884.1	
5	133	73.12	833.8	
6	149	146.90	1,488.8	
7	182	327.00	2,719.0	
8	196	166.73	1,287.8	
9	214	188.19	1,330.6	
10	225	97.69	658.4	
11	235	109.29	705.4	
12	255	82.18	488.0	
13	265	112.94	646.8	
14	276	129.84	712.3	
15	286	110.31	584.1	
16	334	76.10	345.7	
17	350	81.81	354.1	
18	362	87.71	367.5	
19	409	69.55	257.8	
20	423	148.93	533.8	
21	457	52.57	174.4	
22	470	65.73	212.0	

Assay Class: High Sensitivity DNA Assay  
 Data Path: C:\...ents and Settings\Bioanalyzer\2012-12-17\2012-12-17\_001.xad


Created: 12/17/2012 9:54:22 AM  
 Modified: 12/17/2012 10:38:09 AM

### Electropherogram Summary Continued ...

#### ... Peak table for sample 5 : TT 26882 Soni 1:8

Peak	Size [bp]	Conc. [pg/μl]	Molarity [pmol/l]	Observations
23	490	55.05	170.3	
24	517	43.31	126.9	
25	546	57.30	158.9	
26	574	53.62	141.6	
27	656	31.87	73.6	
28	696	34.58	75.2	
29	▶ 10,380	75.00	10.9	Upper Marker

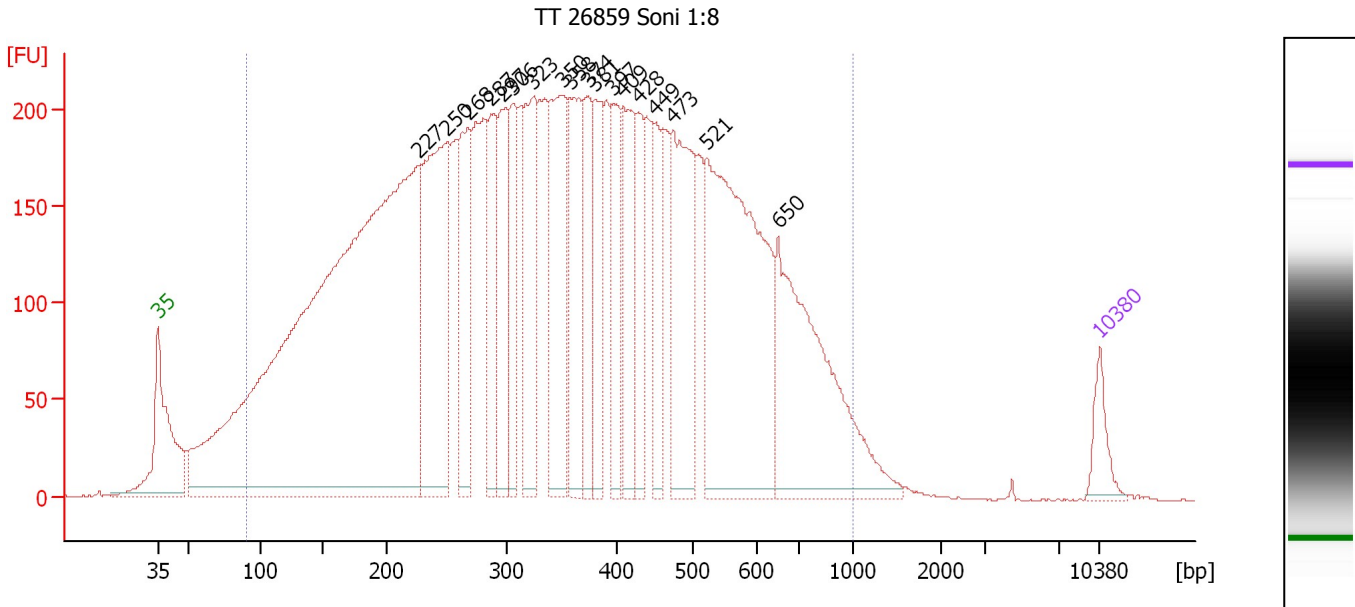
#### Region table for sample 5 : TT 26882 Soni 1:8

From [bp]	To [bp]	Average Size [bp]	Molarity [pmol/l]	Conc. [pg/μl]	Corr. Area	% of Total	Size distribution in CV [%]	Color
129	886	344	19,638.6	3,452.22	2,774.6	91	40.9	

Assay Class: High Sensitivity DNA Assay  
 Data Path: C:\...ents and Settings\Bioanalyzer\2012-12-17\2012-12-17\_001.xad

Created: 12/17/2012 9:54:22 AM  
 Modified: 12/17/2012 10:38:09 AM

**Electropherogram Summary Continued ...**



**Overall Results for sample 6 : TT 26859 Soni 1:8**

Number of peaks found: 18      Corr. Area 1: 9,882.5  
 Noise: 0.2

**Peak table for sample 6 : TT 26859 Soni 1:8**

Peak	Size [bp]	Conc. [pg/μl]	Molarity [pmol/l]	Observations
1	35	125.00	5,411.3	Lower Marker
2	227	4,534.01	30,297.9	
3	250	983.43	5,966.8	
4	268	474.09	2,683.7	
5	287	330.73	1,744.3	
6	297	374.91	1,913.9	
7	306	324.48	1,607.9	
8	323	449.20	2,106.5	
9	350	596.00	2,577.5	
10	358	396.93	1,680.9	
11	374	282.04	1,142.9	
12	381	275.93	1,098.2	
13	397	263.48	1,006.1	
14	409	348.39	1,291.6	
15	428	267.84	947.9	
16	449	221.47	746.9	
17	473	587.98	1,883.0	
18	521	1,298.67	3,777.6	
19	650	847.19	1,974.2	
20	10,380	75.00	10.9	Upper Marker

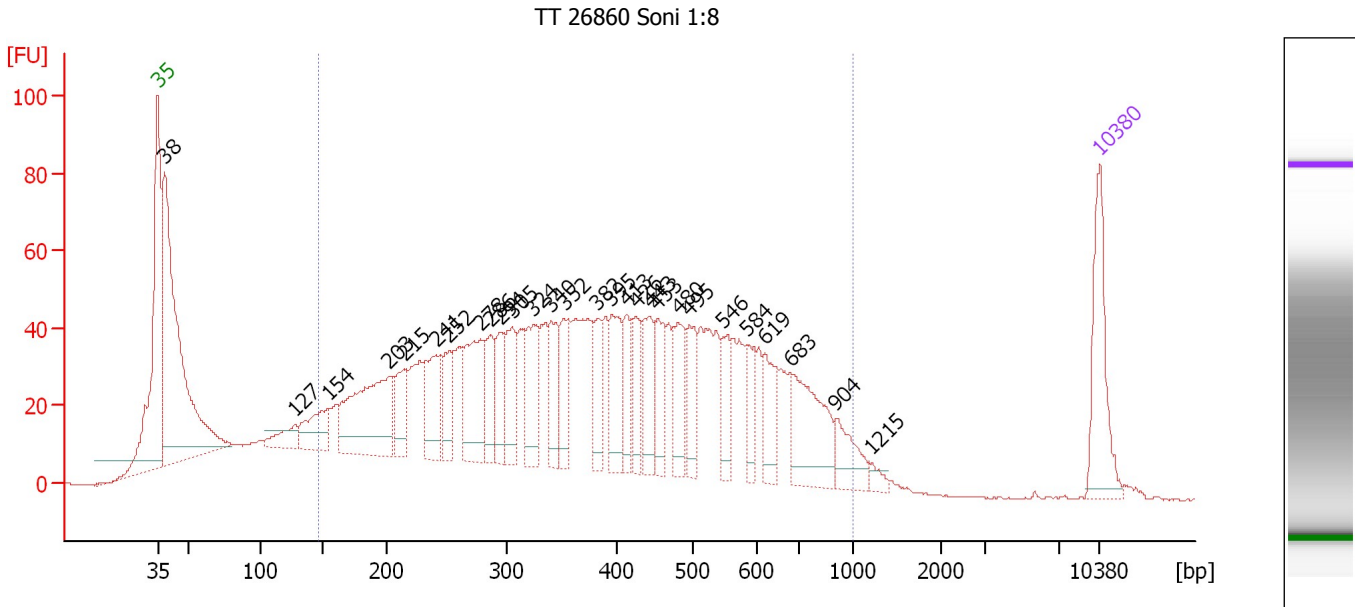
**Region table for sample 6 : TT 26859 Soni 1:8**

From [bp]	To [bp]	Average Size [bp]	Molarity [pmol/l]	Conc. [pg/μl]	Corr. Area	% of Total	Size distribution in CV [%]	Color
90	1,000	370	90,936.0	15,449.50	9,882.5	96	46.2	Blue

Assay Class: High Sensitivity DNA Assay  
 Data Path: C:\...ents and Settings\Bioanalyzer\2012-12-17\2012-12-17\_001.xad

Created: 12/17/2012 9:54:22 AM  
 Modified: 12/17/2012 10:38:09 AM

**Electropherogram Summary Continued ...**



**Overall Results for sample 7 : TT 26860 Soni 1:8**

Number of peaks found: 28                      Corr. Area 1: 1,923.9  
 Noise: 0.2

**Peak table for sample 7 : TT 26860 Soni 1:8**

Peak	Size [bp]	Conc. [pg/μl]	Molarity [pmol/l]	Observations
1	35	125.00	5,411.3	Lower Marker
2	38	485.25	19,150.2	
3	127	34.68	412.7	
4	154	64.28	633.8	
5	203	180.98	1,353.4	
6	215	54.94	387.1	
7	241	80.90	508.5	
8	252	56.45	338.9	
9	278	107.55	585.4	
10	286	50.24	266.4	
11	294	47.32	243.7	
12	305	62.28	309.6	
13	324	69.00	322.5	
14	340	61.47	273.6	
15	352	50.54	217.4	
16	382	44.77	177.4	
17	395	68.39	262.0	
18	413	43.83	160.8	
19	426	43.34	154.3	
20	443	62.82	214.7	
21	453	45.40	151.8	
22	480	59.25	187.1	
23	495	48.66	148.9	
24	546	37.90	105.2	
25	584	33.84	87.7	
26	619	44.79	109.7	

Assay Class: High Sensitivity DNA Assay  
 Data Path: C:\...ents and Settings\Bioanalyzer\2012-12-17\2012-12-17\_001.xad

Created: 12/17/2012 9:54:22 AM  
 Modified: 12/17/2012 10:38:09 AM

### Electropherogram Summary Continued ...

#### ... Peak table for sample 7 : TT 26860 Soni 1:8

Peak	Size [bp]	Conc. [pg/μl]	Molarity [pmol/l]	Observations
27	683	104.19	231.2	
28	904	39.38	66.0	
29	1,215	7.84	9.8	
30	10,380	75.00	10.9	Upper Marker

#### Region table for sample 7 : TT 26860 Soni 1:8

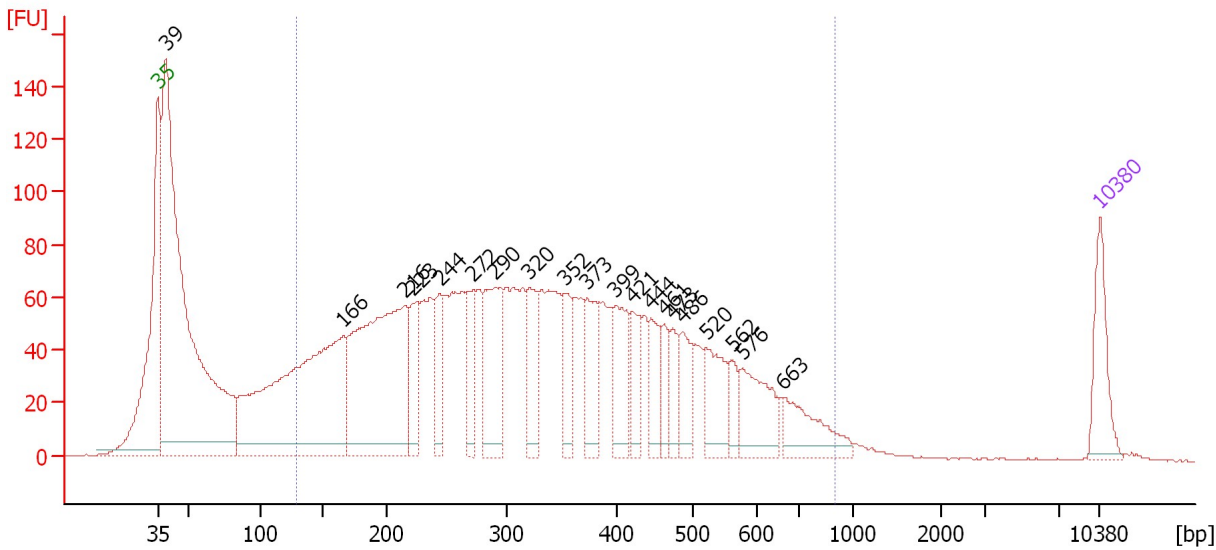
From [bp]	To [bp]	Average Size [bp]	Molarity [pmol/l]	Conc. [pg/μl]	Corr. Area	% of Total	Size distribution in CV [%]	Color
145	1,000	409	12,940.1	2,658.78	1,923.9	78	42.4	

Assay Class: High Sensitivity DNA Assay  
 Data Path: C:\...ents and Settings\Bioanalyzer\2012-12-17\2012-12-17\_001.xad

Created: 12/17/2012 9:54:22 AM  
 Modified: 12/17/2012 10:38:09 AM

**Electropherogram Summary Continued ...**

TT 26861 Soni 1:8



**Overall Results for sample 8 : TT 26861 Soni 1:8**

Number of peaks found: 20      Corr. Area 1: 2,783.3  
 Noise: 0.2

**Peak table for sample 8 : TT 26861 Soni 1:8**

Peak	Size [bp]	Conc. [pg/μl]	Molarity [pmol/l]	Observations
1	35	125.00	5,411.3	Lower Marker
2	39	1,358.40	52,637.8	
3	166	764.77	6,991.5	
4	216	586.65	4,115.8	
5	223	94.07	639.7	
6	244	93.51	579.6	
7	272	90.02	500.8	
8	290	194.91	1,018.3	
9	320	106.12	501.8	
10	352	89.82	386.7	
11	373	102.90	417.7	
12	399	106.27	403.4	
13	421	70.18	252.5	
14	444	64.94	221.4	
15	461	50.19	164.8	
16	473	48.09	154.0	
17	486	76.68	239.2	
18	520	100.17	292.1	
19	562	36.88	99.4	
20	576	112.64	296.3	
21	663	95.69	218.8	
22	10,380	75.00	10.9	Upper Marker

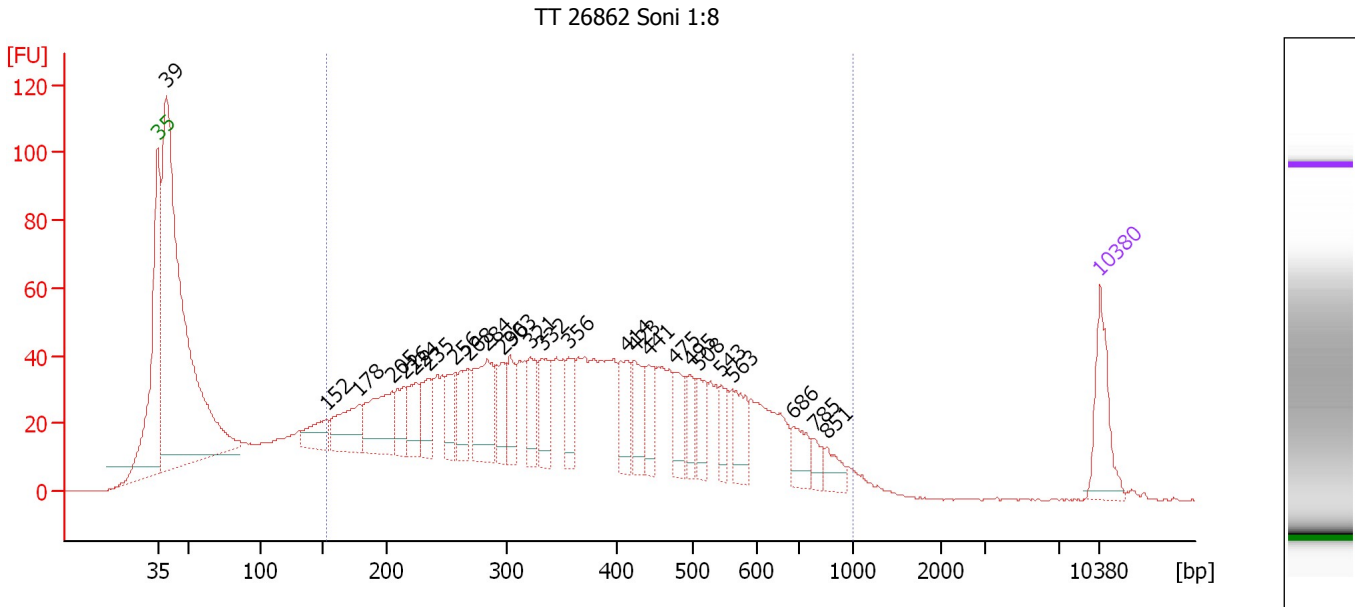
**Region table for sample 8 : TT 26861 Soni 1:8**

From [bp]	To [bp]	Average Size [bp]	Molarity [pmol/l]	Conc. [pg/μl]	Corr. Area	% of Total	Size distribution in CV [%]	Color
128	897	347	21,906.0	3,850.54	2,783.3	74	41.9	Blue

Assay Class: High Sensitivity DNA Assay  
 Data Path: C:\...ents and Settings\Bioanalyzer\2012-12-17\2012-12-17\_001.xad

Created: 12/17/2012 9:54:22 AM  
 Modified: 12/17/2012 10:38:09 AM

**Electropherogram Summary Continued ...**



**Overall Results for sample 9 : TT 26862 Soni 1:8**

Number of peaks found: 26                      Corr. Area 1: 1,687.0  
 Noise: 0.1

**Peak table for sample 9 : TT 26862 Soni 1:8**

Peak	Size [bp]	Conc. [pg/μl]	Molarity [pmol/l]	Observations
1	35	125.00	5,411.3	Lower Marker
2	39	1,199.86	46,037.8	
3	152	61.96	616.9	
4	178	105.40	897.7	
5	205	133.65	988.5	
6	216	62.77	440.8	
7	224	70.56	476.4	
8	235	69.70	448.7	
9	256	57.05	337.6	
10	268	70.85	401.2	
11	284	142.71	762.2	
12	296	60.66	310.8	
13	303	61.75	308.8	
14	321	60.98	287.5	
15	332	76.99	351.2	
16	356	54.12	230.1	
17	414	60.50	221.4	
18	423	62.95	225.5	
19	441	47.00	161.4	
20	475	56.97	181.8	
21	495	45.45	139.0	
22	508	46.81	139.7	
23	543	36.29	101.3	
24	563	58.35	157.2	
25	686	41.63	91.9	
26	785	20.68	39.9	



Assay Class: High Sensitivity DNA Assay  
Data Path: C:\...ents and Settings\Bioanalyzer\2012-12-17\2012-12-17\_001.xad

Created: 12/17/2012 9:54:22 AM  
Modified: 12/17/2012 10:38:09 AM

**Electropherogram Summary Continued ...****... Peak table for sample 9 : TT 26862 Soni 1:8**

Peak	Size [bp]	Conc. [pg/ $\mu$ l]	Molarity [pmol/l]	Observations
27	851	28.95	51.6	
28	▶ 10,380	75.00	10.9	Upper Marker

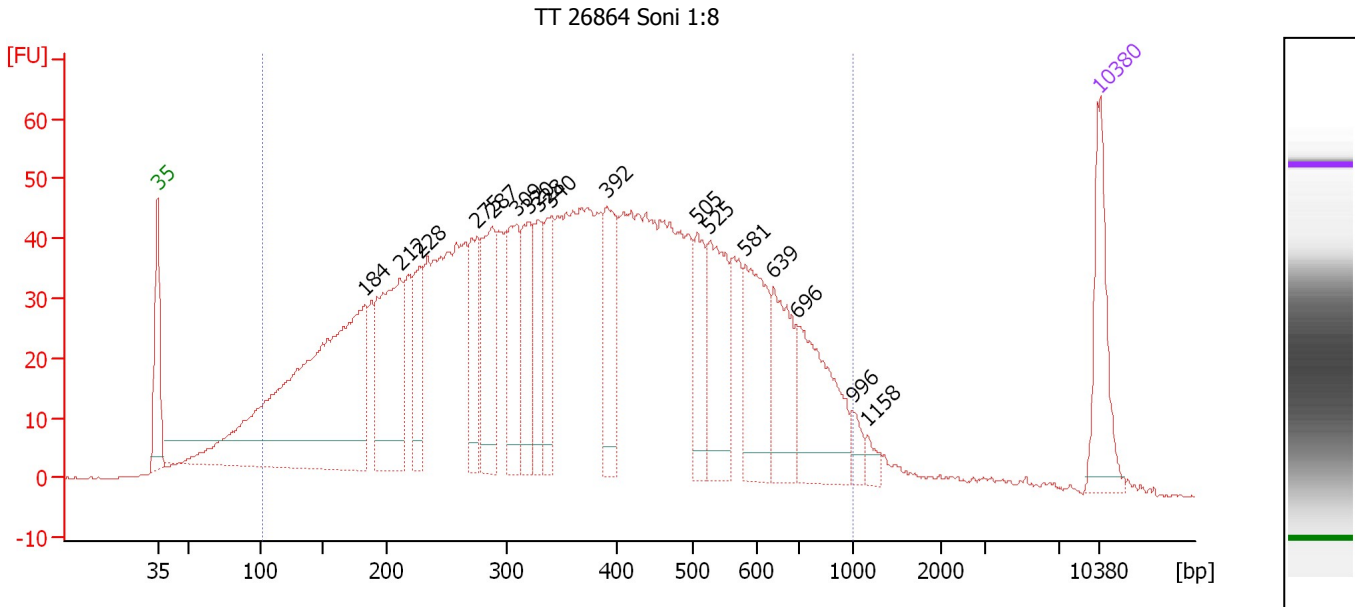
**Region table for sample 9 : TT 26862 Soni 1:8**

From [bp]	To [bp]	Average Size [bp]	Molarity [pmol/l]	Conc. [pg/ $\mu$ l]	Corr. Area	% of Total	Size distribution in CV [%]	Color
152	1,000	388	15,920.6	3,176.12	1,687.0	68	41.6	■

Assay Class: High Sensitivity DNA Assay  
 Data Path: C:\...ents and Settings\Bioanalyzer\2012-12-17\2012-12-17\_001.xad

Created: 12/17/2012 9:54:22 AM  
 Modified: 12/17/2012 10:38:09 AM

**Electropherogram Summary Continued ...**



**Overall Results for sample 10 : TT 26864 Soni 1:8**

Number of peaks found: 17      Corr. Area 1: 2,117.9  
 Noise: 0.2

**Peak table for sample 10 : TT 26864 Soni 1:8**

Peak	Size [bp]	Conc. [pg/μl]	Molarity [pmol/l]	Observations
1	35	125.00	5,411.3	Lower Marker
2	184	644.50	5,318.9	
3	212	223.75	1,602.8	
4	228	79.95	530.5	
5	275	94.09	517.9	
6	287	129.56	682.9	
7	309	120.54	591.9	
8	320	101.68	481.3	
9	328	78.49	362.1	
10	340	77.58	345.8	
11	392	96.94	374.9	
12	505	74.93	224.7	
13	525	127.83	368.9	
14	581	123.48	321.8	
15	639	95.89	227.4	
16	696	140.30	305.4	
17	996	16.01	24.4	
18	1,158	10.87	14.2	
19	10,380	75.00	10.9	Upper Marker

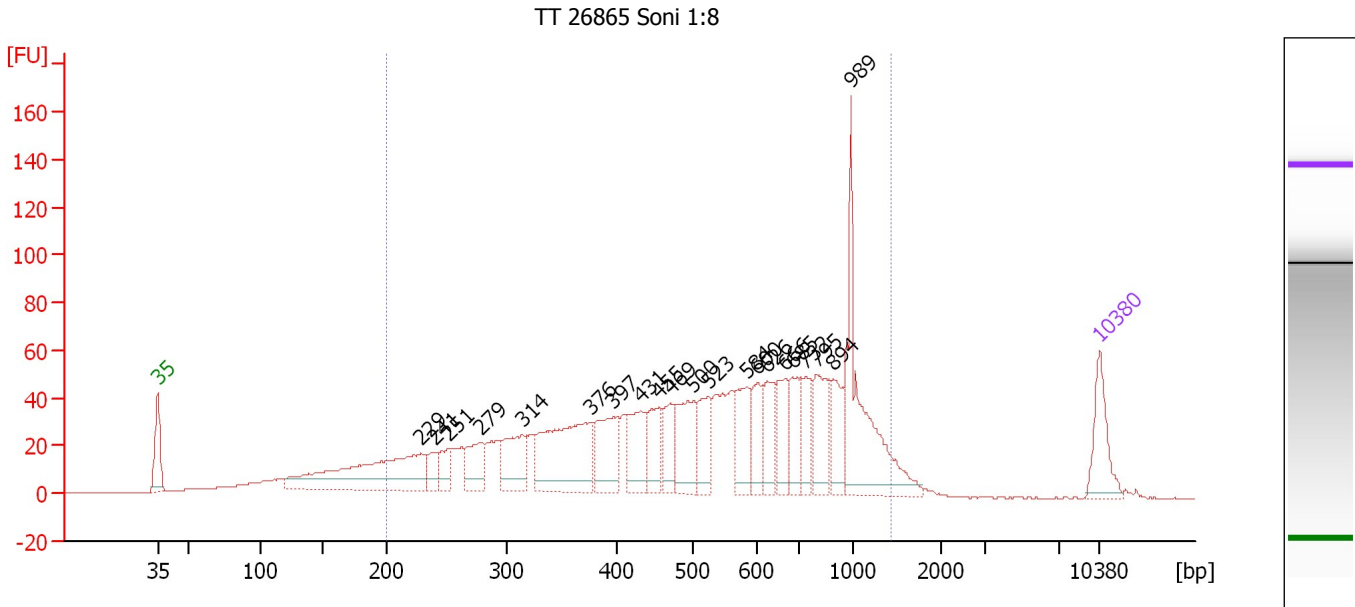
**Region table for sample 10 : TT 26864 Soni 1:8**

From [bp]	To [bp]	Average Size [bp]	Molarity [pmol/l]	Conc. [pg/μl]	Corr. Area	% of Total	Size distribution in CV [%]	Color
102	1,000	387	21,818.9	3,941.61	2,117.9	93	45.7	Blue

Assay Class: High Sensitivity DNA Assay  
 Data Path: C:\...ents and Settings\Bioanalyzer\2012-12-17\2012-12-17\_001.xad

Created: 12/17/2012 9:54:22 AM  
 Modified: 12/17/2012 10:38:09 AM

**Electropherogram Summary Continued ...**



**Overall Results for sample 11 : TT 26865 Soni 1:8**

Number of peaks found: 21                      Corr. Area 1: 1,560.9  
 Noise: 0.2

**Peak table for sample 11 : TT 26865 Soni 1:8**

Peak	Size [bp]	Conc. [pg/μl]	Molarity [pmol/l]	Observations
1	35	125.00	5,411.3	Lower Marker
2	229	348.05	2,298.5	
3	241	41.68	262.5	
4	251	51.86	312.9	
5	279	83.66	454.9	
6	314	115.74	558.6	
7	376	279.75	1,127.0	
8	397	127.09	485.3	
9	431	102.78	361.0	
10	455	81.41	270.8	
11	469	67.48	217.9	
12	500	140.78	426.9	
13	523	77.70	225.1	
14	584	91.92	238.3	
15	600	70.73	178.6	
16	626	86.40	209.3	
17	666	79.71	181.2	
18	685	86.12	190.5	
19	732	70.66	146.2	
20	795	109.47	208.5	
21	894	91.29	154.7	
22	989	259.26	397.2	
23	10,380	75.00	10.9	Upper Marker

Assay Class: High Sensitivity DNA Assay  
Data Path: C:\...ents and Settings\Bioanalyzer\2012-12-17\2012-12-17\_001.xad

Created: 12/17/2012 9:54:22 AM  
Modified: 12/17/2012 10:38:09 AM

**Electropherogram Summary Continued ...**

... Region table for sample 11 : TT 26865 Soni 1:8

From [bp]	To [bp]	Average Size [bp]	Molarity [pmol/l]	Conc. [pg/μl]	Corr. Area	% of Total	Size distribution in CV [%]	Color
200	1,433	572	9,903.4	2,785.04	1,560.9	87	46.3	■

Assay Class: High Sensitivity DNA Assay  
Data Path: C:\...ents and Settings\Bioanalyzer\2012-12-17\2012-12-17\_001.xad

Created: 12/17/2012 9:54:22 AM  
Modified: 12/17/2012 10:38:09 AM

**Gel Image**

