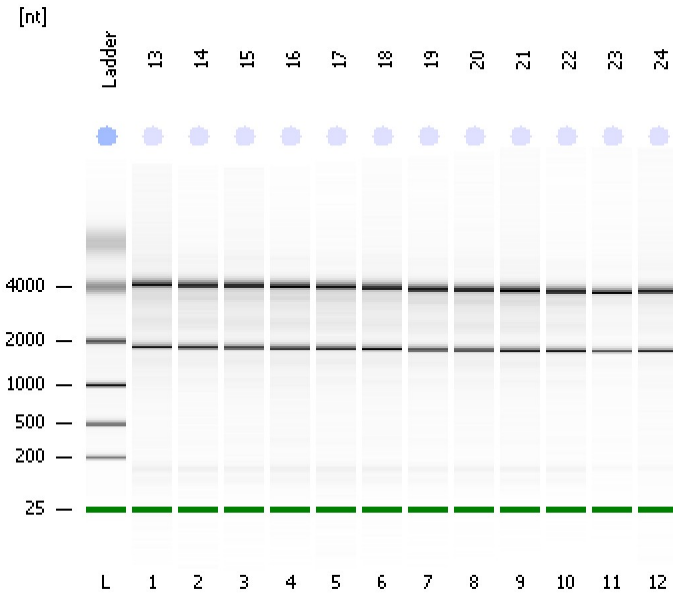


Assay Class: Eukaryote Total RNA Nano
Data Path: C:\...ents and Settings\Bioanalyzer\2012-12-17\2012-12-17_006.xad

Created: 12/17/2012 1:36:52 PM
Modified: 12/17/2012 1:59:57 PM

Electrophoresis File Run Summary



Instrument Information:

Instrument Name: DE13701086 Firmware: C.01.069
Serial#: DE13701086 Type: G2938B

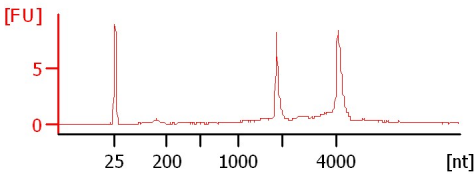
Assay Information:

Assay Origin Path: C:\Program Files\Agilent\2100 bioanalyzer\2100 expert\assays\RNA\Eukaryote Total RNA Nano Series II.xsy
Assay Class: Eukaryote Total RNA Nano
Version: 2.6
Assay Comments: Total RNA Analysis ng sensitivity (Eukaryote)
© Copyright 2003 - 2009 Agilent Technologies, Inc.

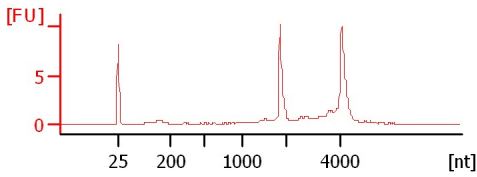
Chip Information:

Chip Lot #: Reagent Kit Lot #: Chip Comments:

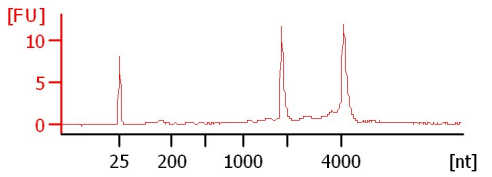
13
RIN: 9.10



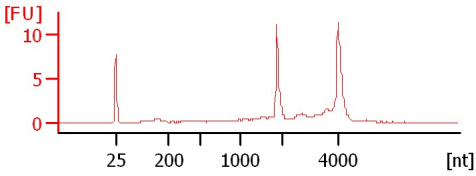
14
RIN: 9



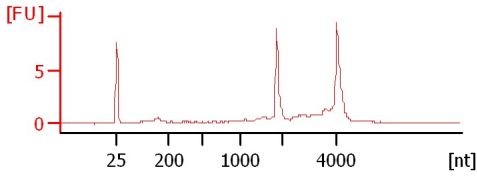
15
RIN: 9.10



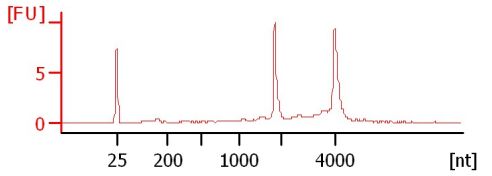
16
RIN: 8.80



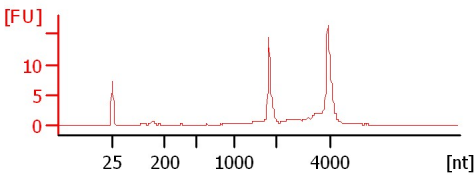
17
RIN: 8.80



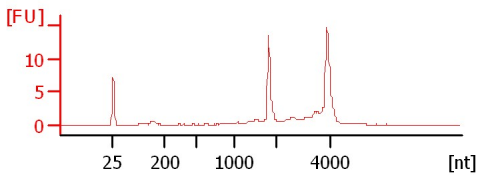
18
RIN: 9



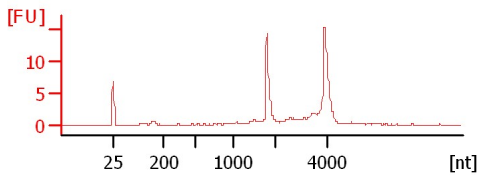
19
RIN: 9.20



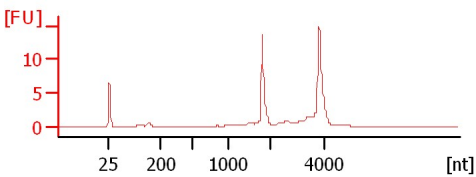
20
RIN: 8.90



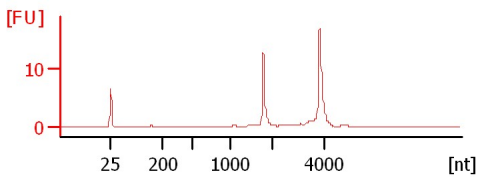
21
RIN: 9.20



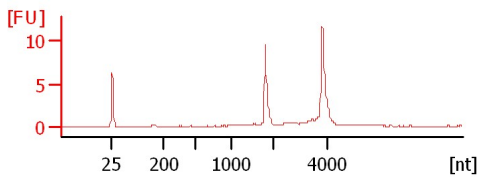
22
RIN: 9.30



23
RIN: 9.90



24
RIN: 9.50



Assay Class: Eukaryote Total RNA Nano
 Data Path: C:\...ents and Settings\Bioanalyzer\2012-12-17\2012-12-17_006.xad

Created: 12/17/2012 1:36:52 PM
 Modified: 12/17/2012 1:59:57 PM

Electrophoresis File Run Summary (Chip Summary)

| Sample Name | Sample Comment | Status | Result Label | Result Color |
|-------------|----------------|--------|-------------------|--------------|
| 13 | | ✓ | RIN: 9.10 | |
| 14 | | ✓ | RIN:9 | |
| 15 | | ✓ | RIN: 9.10 | |
| 16 | | ✓ | RIN: 8.80 | |
| 17 | | ✓ | RIN: 8.80 | |
| 18 | | ✓ | RIN:9 | |
| 19 | | ✓ | RIN: 9.20 | |
| 20 | | ✓ | RIN: 8.90 | |
| 21 | | ✓ | RIN: 9.20 | |
| 22 | | ✓ | RIN: 9.30 | |
| 23 | | ✓ | RIN: 9.90 | |
| 24 | | ✓ | RIN: 9.50 | |
| Ladder | | ✓ | All Other Samples | |

Chip Lot #

Reagent Kit Lot #

Chip Comments :

Assay Class: Eukaryote Total RNA Nano
Data Path: C:\...ents and Settings\Bioanalyzer\2012-12-17\2012-12-17_006.xad

Created: 12/17/2012 1:36:52 PM
Modified: 12/17/2012 1:59:57 PM

Electrophoresis Assay Details

General Analysis Settings

Number of Available Sample and Ladder Wells (Max.) : 13
Minimum Visible Range [s] : 17
Maximum Visible Range [s] : 70
Start Analysis Time Range [s] : 19
End Analysis Time Range [s] : 69
Ladder Concentration [ng/ μ l] : 150
Lower Marker Concentration [ng/ μ l] : 0
Upper Marker Concentration [ng/ μ l] : 0
Used Lower Marker for Quantitation
Standard Curve Fit is Logarithmic
Show Data Aligned to Lower Marker

Integrator Settings

Integration Start Time [s] : 19
Integration End Time [s] : 69
Slope Threshold : 0.6
Height Threshold [FU] : 0.5
Area Threshold : 0.2
Width Threshold [s] : 0.5
Baseline Plateau [s] : 6

Filter Settings

Filter Width [s] : 0.5
Polynomial Order : 4

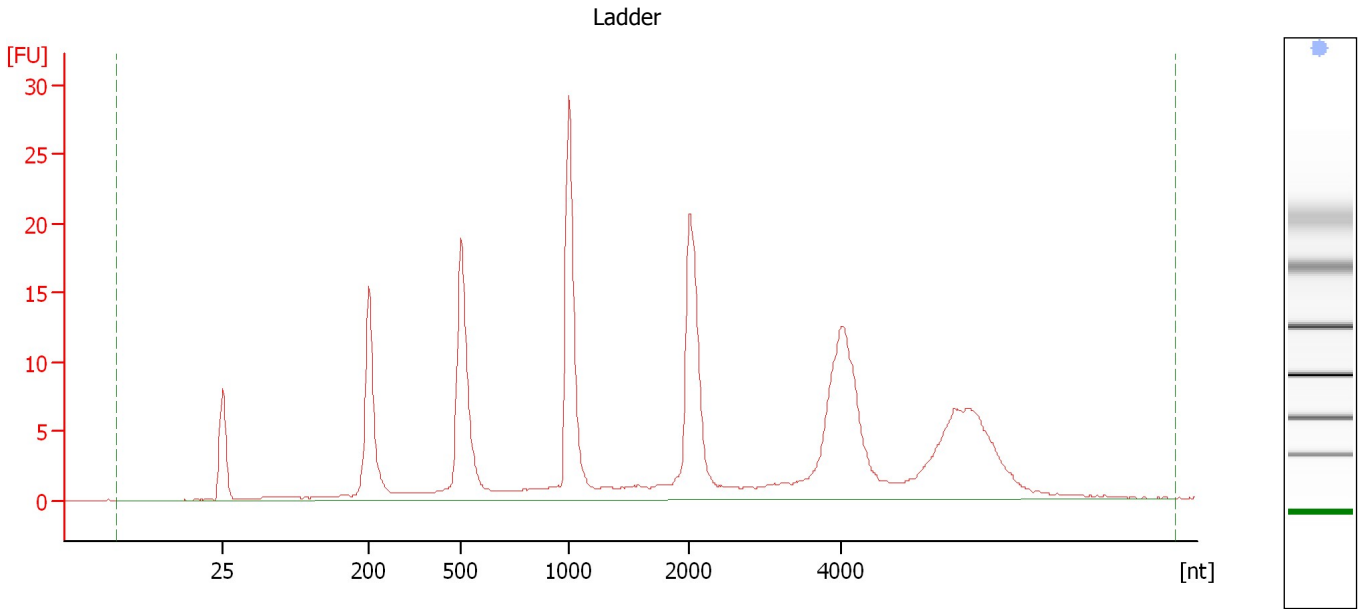
Ladder

| Ladder Peak | Size |
|-------------|------|
| 1 | 25 |
| 2 | 200 |
| 3 | 500 |
| 4 | 1000 |
| 5 | 2000 |
| 6 | 4000 |

Assay Class: Eukaryote Total RNA Nano
Data Path: C:\...ents and Settings\Bioanalyzer\2012-12-17\2012-12-17_006.xad

Created: 12/17/2012 1:36:52 PM
Modified: 12/17/2012 1:59:57 PM

Electropherogram Summary



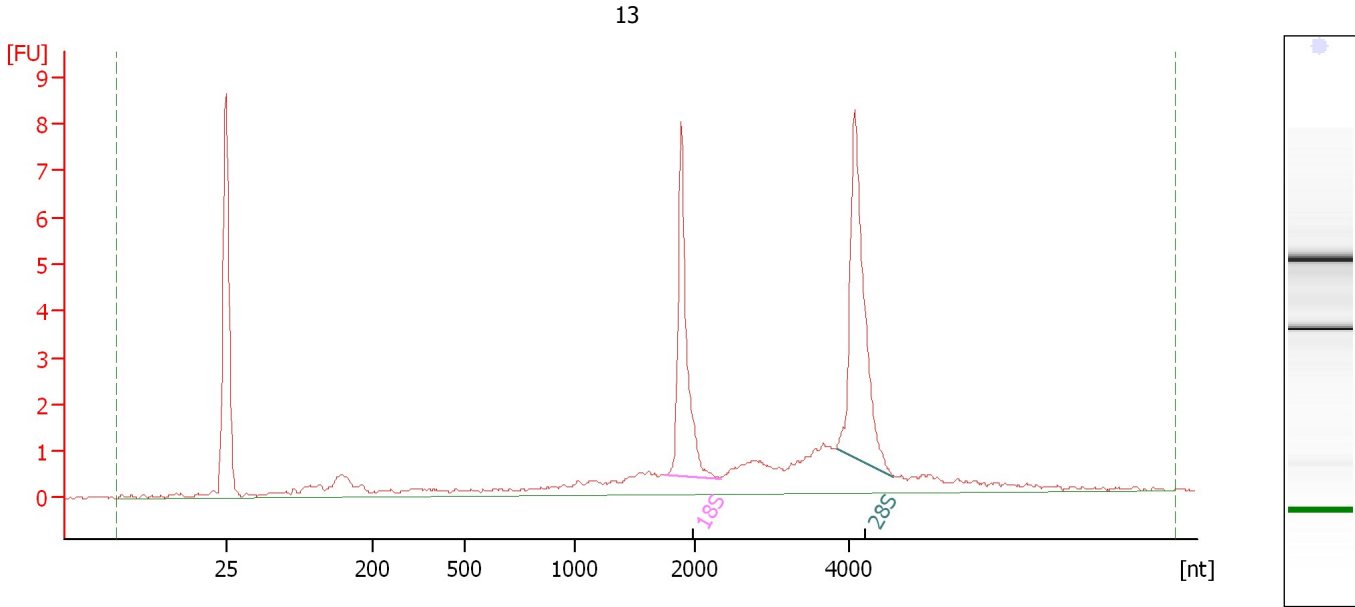
Overall Results for Ladder

| | | | |
|--------------------|-----------------|------------------------|---|
| RNA Area: | 229.8 | Result Flagging Color: | |
| RNA Concentration: | 150 ng/ μ l | Result Flagging Label: | All Other Samples |

Assay Class: Eukaryote Total RNA Nano
Data Path: C:\...ents and Settings\Bioanalyzer\2012-12-17\2012-12-17_006.xad

Created: 12/17/2012 1:36:52 PM
Modified: 12/17/2012 1:59:57 PM

Electropherogram Summary Continued ...



Overall Results for sample 1 : 13

| | | | |
|-------------------------|----------|-----------------------------|---|
| RNA Area: | 43.6 | RNA Integrity Number (RIN): | 9.1 (B.02.08) |
| RNA Concentration: | 28 ng/μl | Result Flagging Color: | |
| rRNA Ratio [28s / 18s]: | 1.3 | Result Flagging Label: | RIN: 9.10 |

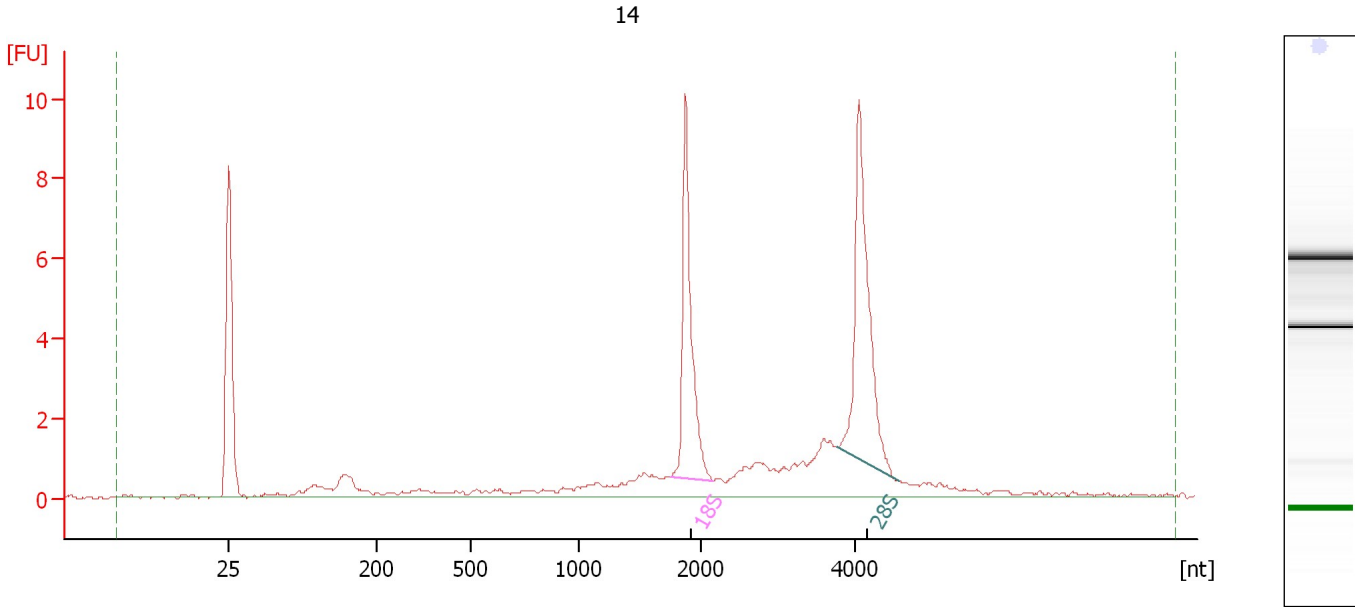
Fragment table for sample 1 : 13

| Name | Start Size [nt] | End Size [nt] | Area | % of total Area |
|------|-----------------|---------------|------|-----------------|
| 18S | 1,747 | 2,326 | 7.6 | 17.3 |
| 28S | 3,838 | 4,580 | 10.2 | 23.3 |

Assay Class: Eukaryote Total RNA Nano
Data Path: C:\...ents and Settings\Bioanalyzer\2012-12-17\2012-12-17_006.xad

Created: 12/17/2012 1:36:52 PM
Modified: 12/17/2012 1:59:57 PM

Electropherogram Summary Continued ...



Overall Results for sample 2 : 14

RNA Area: 50.9 RNA Integrity Number (RIN): 9 (B.02.08)
RNA Concentration: 33 ng/μl Result Flagging Color:
rRNA Ratio [28s / 18s]: 1.3 Result Flagging Label: RIN:9

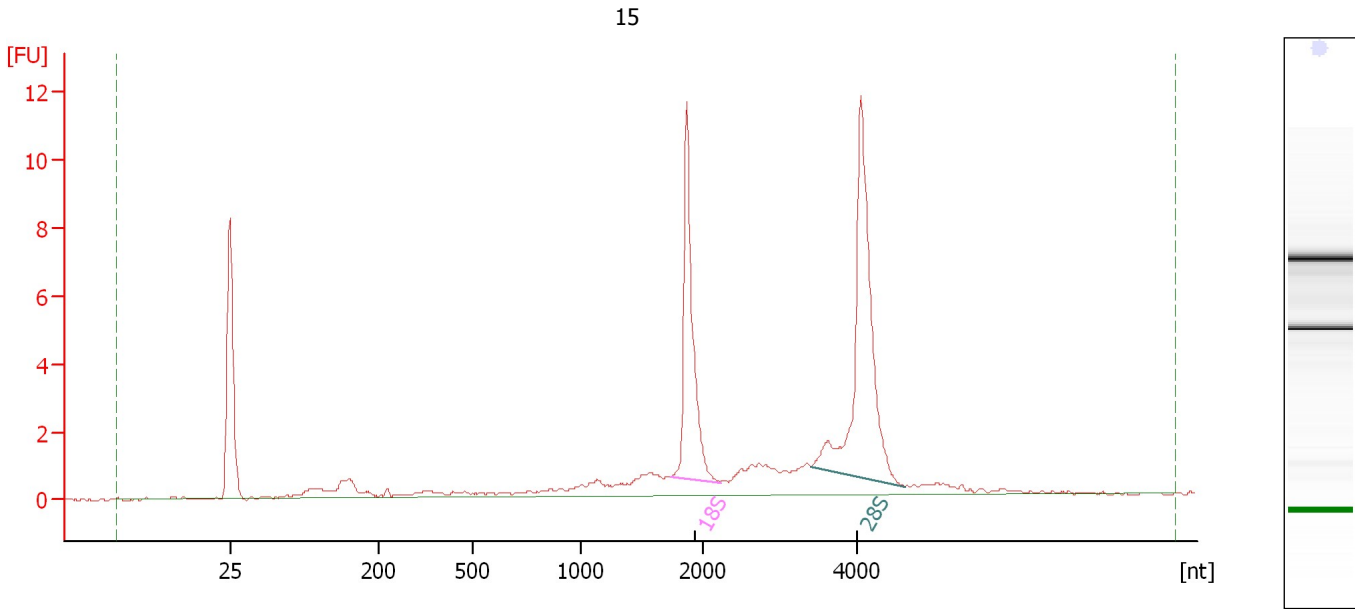
Fragment table for sample 2 : 14

| Name | Start Size [nt] | End Size [nt] | Area | % of total Area |
|------|-----------------|---------------|------|-----------------|
| 18S | 1,752 | 2,134 | 9.6 | 18.9 |
| 28S | 3,762 | 4,555 | 12.0 | 23.6 |

Assay Class: Eukaryote Total RNA Nano
Data Path: C:\...ents and Settings\Bioanalyzer\2012-12-17\2012-12-17_006.xad

Created: 12/17/2012 1:36:52 PM
Modified: 12/17/2012 1:59:57 PM

Electropherogram Summary Continued ...



Overall Results for sample 3 : 15

| | | | |
|-------------------------|----------|-----------------------------|---|
| RNA Area: | 53.9 | RNA Integrity Number (RIN): | 9.1 (B.02.08) |
| RNA Concentration: | 35 ng/μl | Result Flagging Color: | |
| rRNA Ratio [28s / 18s]: | 1.5 | Result Flagging Label: | RIN: 9.10 |

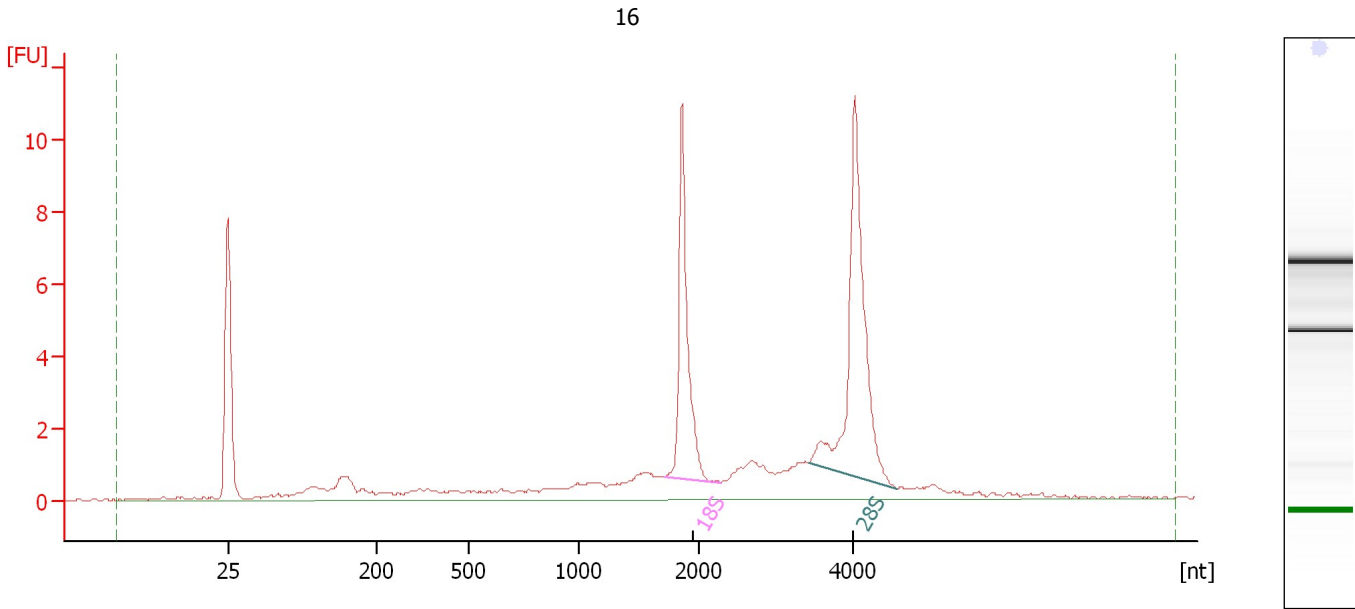
Fragment table for sample 3 : 15

| Name | Start Size [nt] | End Size [nt] | Area | % of total Area |
|------|-----------------|---------------|------|-----------------|
| 18S | 1,727 | 2,218 | 11.2 | 20.8 |
| 28S | 3,398 | 4,606 | 17.3 | 32.0 |

Assay Class: Eukaryote Total RNA Nano
Data Path: C:\...ents and Settings\Bioanalyzer\2012-12-17\2012-12-17_006.xad

Created: 12/17/2012 1:36:52 PM
Modified: 12/17/2012 1:59:57 PM

Electropherogram Summary Continued ...



Overall Results for sample 4 : 16

RNA Area: 61.2 RNA Integrity Number (RIN): 8.8 (B.02.08)
RNA Concentration: 40 ng/μl Result Flagging Color:
rRNA Ratio [28s / 18s]: 1.5 Result Flagging Label: RIN: 8.80

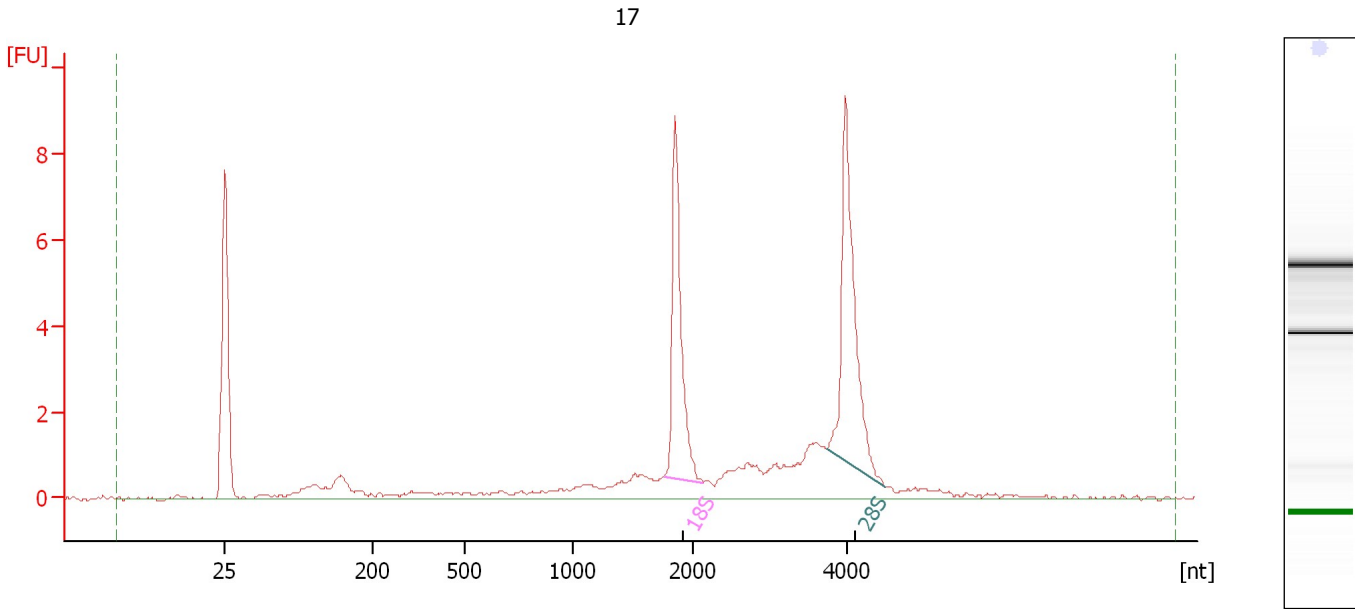
Fragment table for sample 4 : 16

| Name | Start Size [nt] | End Size [nt] | Area | % of total Area |
|------|-----------------|---------------|------|-----------------|
| 18S | 1,715 | 2,272 | 10.3 | 16.8 |
| 28S | 3,429 | 4,572 | 15.7 | 25.7 |

Assay Class: Eukaryote Total RNA Nano
 Data Path: C:\...ents and Settings\Bioanalyzer\2012-12-17\2012-12-17_006.xad

Created: 12/17/2012 1:36:52 PM
 Modified: 12/17/2012 1:59:57 PM

Electropherogram Summary Continued ...



Overall Results for sample 5 : 17

| | | | |
|-------------------------|----------|-----------------------------|---|
| RNA Area: | 45.0 | RNA Integrity Number (RIN): | 8.8 (B.02.08) |
| RNA Concentration: | 29 ng/μl | Result Flagging Color: | |
| rRNA Ratio [28s / 18s]: | 1.3 | Result Flagging Label: | RIN: 8.80 |

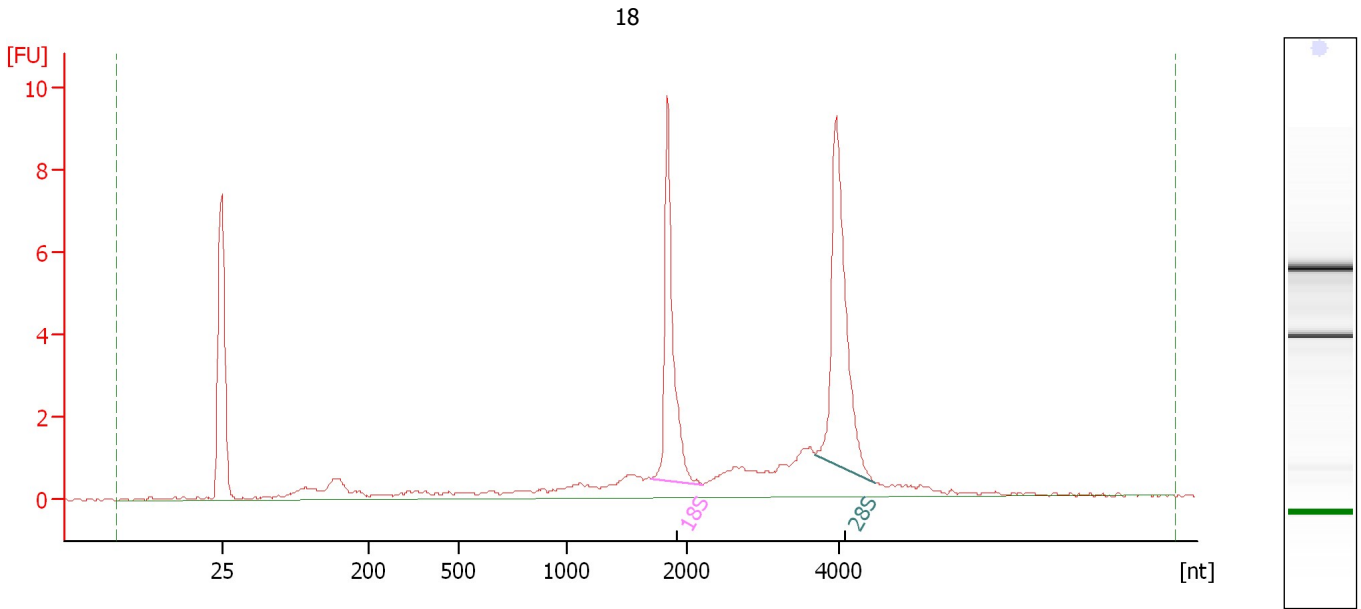
Fragment table for sample 5 : 17

| Name | Start Size [nt] | End Size [nt] | Area | % of total Area |
|------|-----------------|---------------|------|-----------------|
| 18S | 1,755 | 2,129 | 8.3 | 18.4 |
| 28S | 3,742 | 4,513 | 10.8 | 23.9 |

Assay Class: Eukaryote Total RNA Nano
Data Path: C:\...ents and Settings\Bioanalyzer\2012-12-17\2012-12-17_006.xad

Created: 12/17/2012 1:36:52 PM
Modified: 12/17/2012 1:59:57 PM

Electropherogram Summary Continued ...



Overall Results for sample 6 : 18

RNA Area: 49.3 RNA Integrity Number (RIN): 9 (B.02.08)
RNA Concentration: 32 ng/μl Result Flagging Color:
rRNA Ratio [28s / 18s]: 1.3 Result Flagging Label: RIN:9

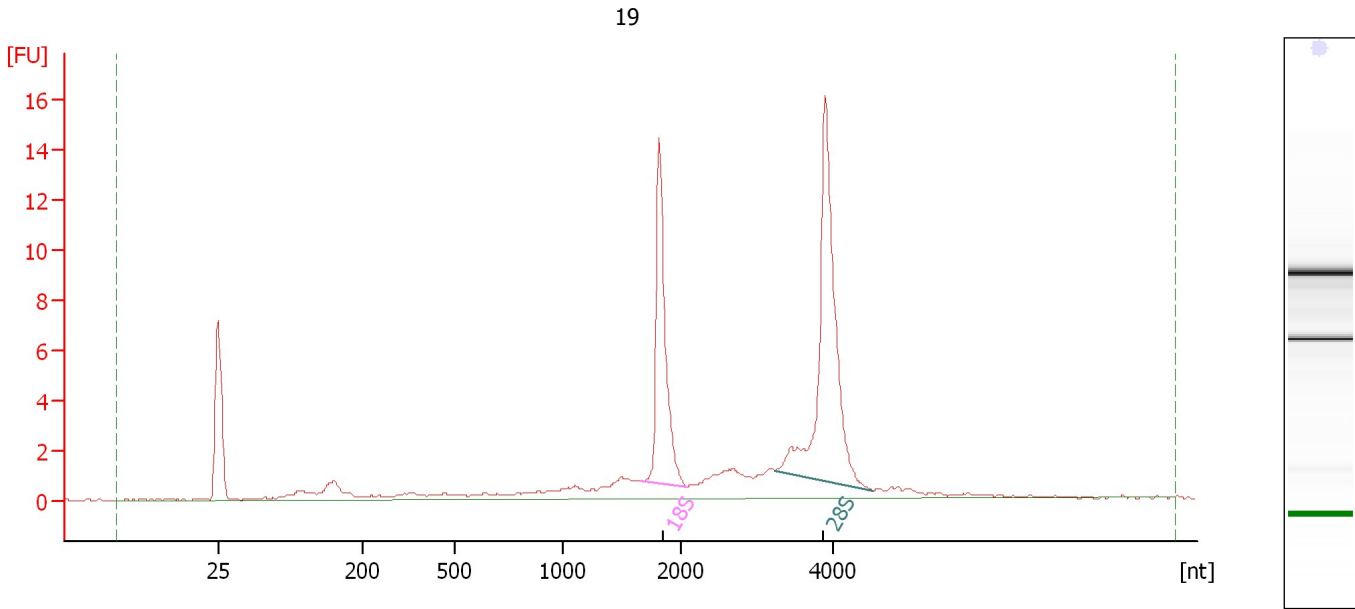
Fragment table for sample 6 : 18

| Name | Start Size [nt] | End Size [nt] | Area | % of total Area |
|------|-----------------|---------------|------|-----------------|
| 18S | 1,697 | 2,196 | 9.1 | 18.5 |
| 28S | 3,692 | 4,482 | 11.7 | 23.8 |

Assay Class: Eukaryote Total RNA Nano
Data Path: C:\...ents and Settings\Bioanalyzer\2012-12-17\2012-12-17_006.xad

Created: 12/17/2012 1:36:52 PM
Modified: 12/17/2012 1:59:57 PM

Electropherogram Summary Continued ...



Overall Results for sample 7 : 19

| | | | |
|-------------------------|----------|-----------------------------|---|
| RNA Area: | 73.9 | RNA Integrity Number (RIN): | 9.2 (B.02.08) |
| RNA Concentration: | 48 ng/μl | Result Flagging Color: | |
| rRNA Ratio [28s / 18s]: | 1.7 | Result Flagging Label: | RIN: 9.20 |

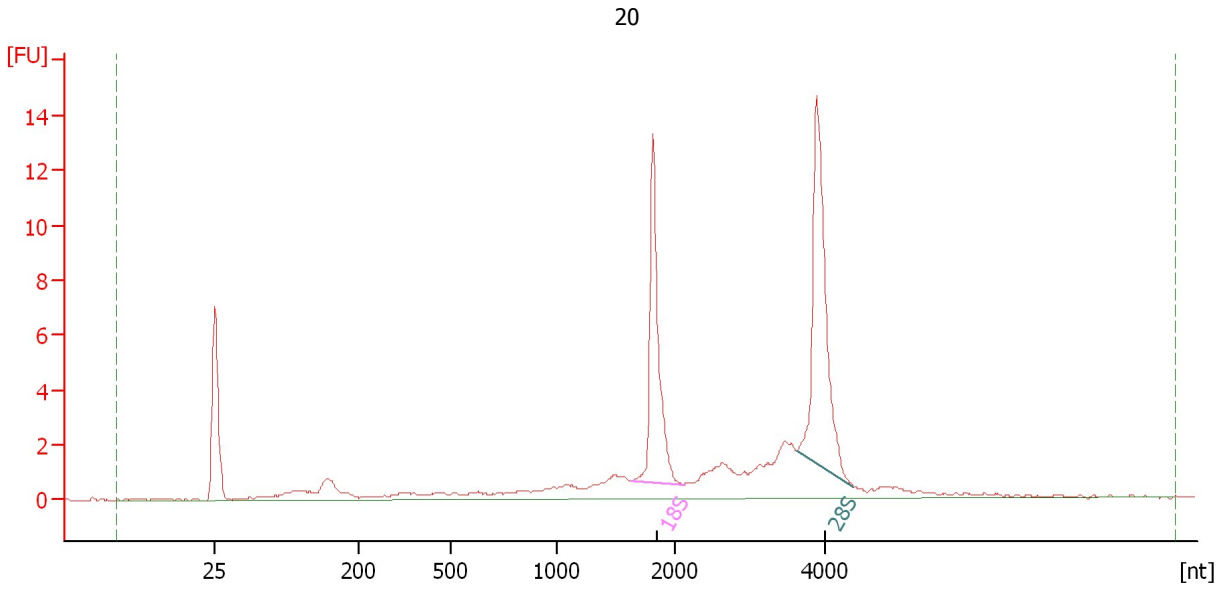
Fragment table for sample 7 : 19

| Name | Start Size [nt] | End Size [nt] | Area | % of total Area |
|------|-----------------|---------------|------|-----------------|
| 18S | 1,666 | 2,064 | 14.5 | 19.6 |
| 28S | 3,229 | 4,535 | 24.6 | 33.4 |

Assay Class: Eukaryote Total RNA Nano
Data Path: C:\...ents and Settings\Bioanalyzer\2012-12-17\2012-12-17_006.xad

Created: 12/17/2012 1:36:52 PM
Modified: 12/17/2012 1:59:57 PM

Electropherogram Summary Continued ...



Overall Results for sample 8 : 20

| | | | |
|-------------------------|----------|-----------------------------|---|
| RNA Area: | 68.6 | RNA Integrity Number (RIN): | 8.9 (B.02.08) |
| RNA Concentration: | 45 ng/μl | Result Flagging Color: | |
| rRNA Ratio [28s / 18s]: | 1.3 | Result Flagging Label: | RIN: 8.90 |

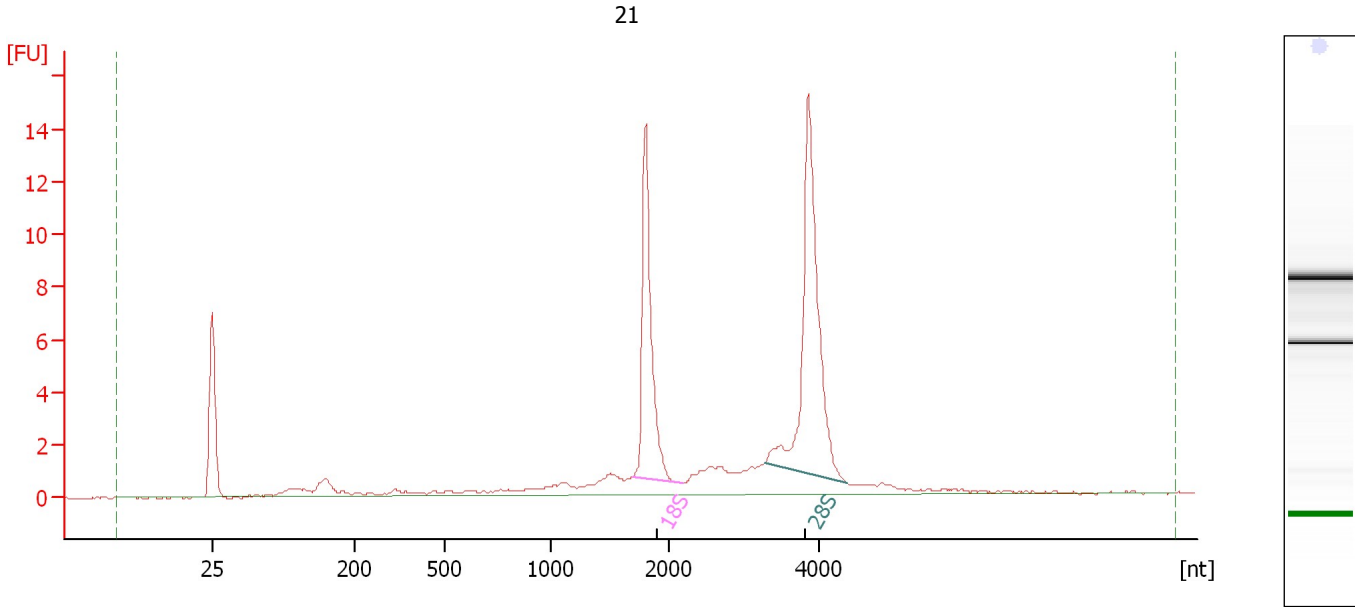
Fragment table for sample 8 : 20

| Name | Start Size [nt] | End Size [nt] | Area | % of total Area |
|------|-----------------|---------------|------|-----------------|
| 18S | 1,625 | 2,117 | 13.1 | 19.1 |
| 28S | 3,618 | 4,375 | 17.5 | 25.4 |

Assay Class: Eukaryote Total RNA Nano
Data Path: C:\...ents and Settings\Bioanalyzer\2012-12-17\2012-12-17_006.xad

Created: 12/17/2012 1:36:52 PM
Modified: 12/17/2012 1:59:57 PM

Electropherogram Summary Continued ...



Overall Results for sample 9 : 21

| | | | |
|-------------------------|----------|-----------------------------|---|
| RNA Area: | 67.3 | RNA Integrity Number (RIN): | 9.2 (B.02.08) |
| RNA Concentration: | 44 ng/μl | Result Flagging Color: | |
| rRNA Ratio [28s / 18s]: | 1.6 | Result Flagging Label: | RIN: 9.20 |

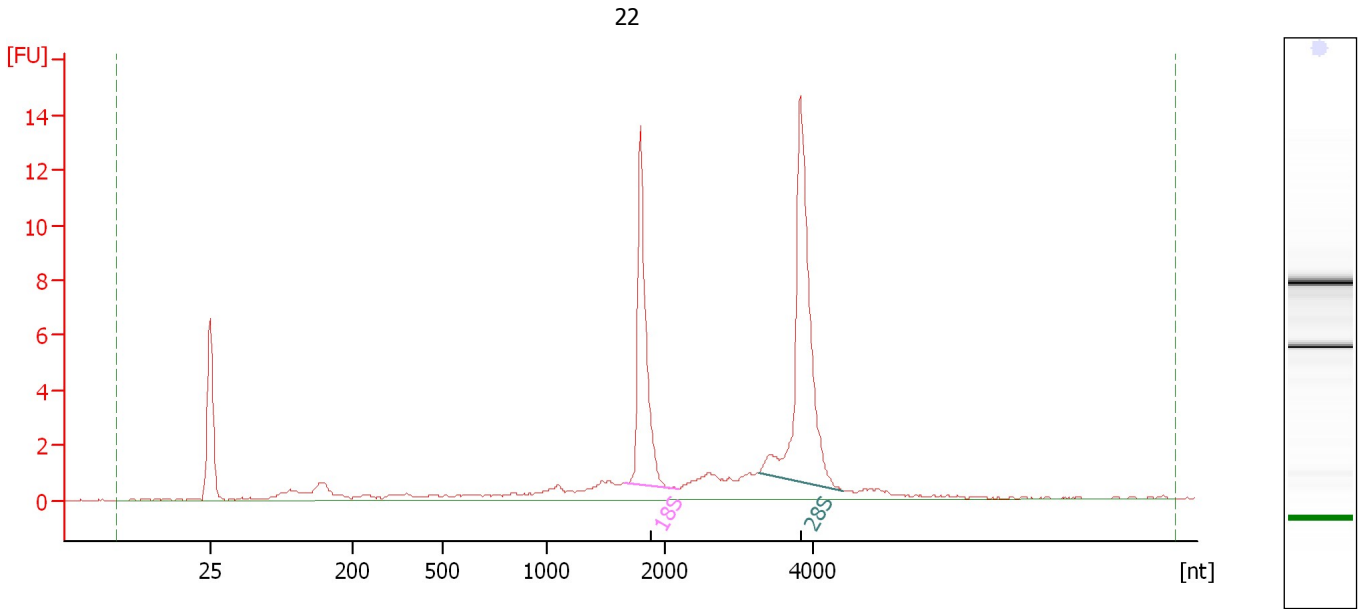
Fragment table for sample 9 : 21

| Name | Start Size [nt] | End Size [nt] | Area | % of total Area |
|------|-----------------|---------------|------|-----------------|
| 18S | 1,683 | 2,171 | 14.0 | 20.7 |
| 28S | 3,278 | 4,400 | 22.7 | 33.8 |

Assay Class: Eukaryote Total RNA Nano
Data Path: C:\...ents and Settings\Bioanalyzer\2012-12-17\2012-12-17_006.xad

Created: 12/17/2012 1:36:52 PM
Modified: 12/17/2012 1:59:57 PM

Electropherogram Summary Continued ...



Overall Results for sample 10 : 22

| | | | |
|-------------------------|----------|-----------------------------|---|
| RNA Area: | 64.3 | RNA Integrity Number (RIN): | 9.3 (B.02.08) |
| RNA Concentration: | 42 ng/μl | Result Flagging Color: | |
| rRNA Ratio [28s / 18s]: | 1.6 | Result Flagging Label: | RIN: 9.30 |

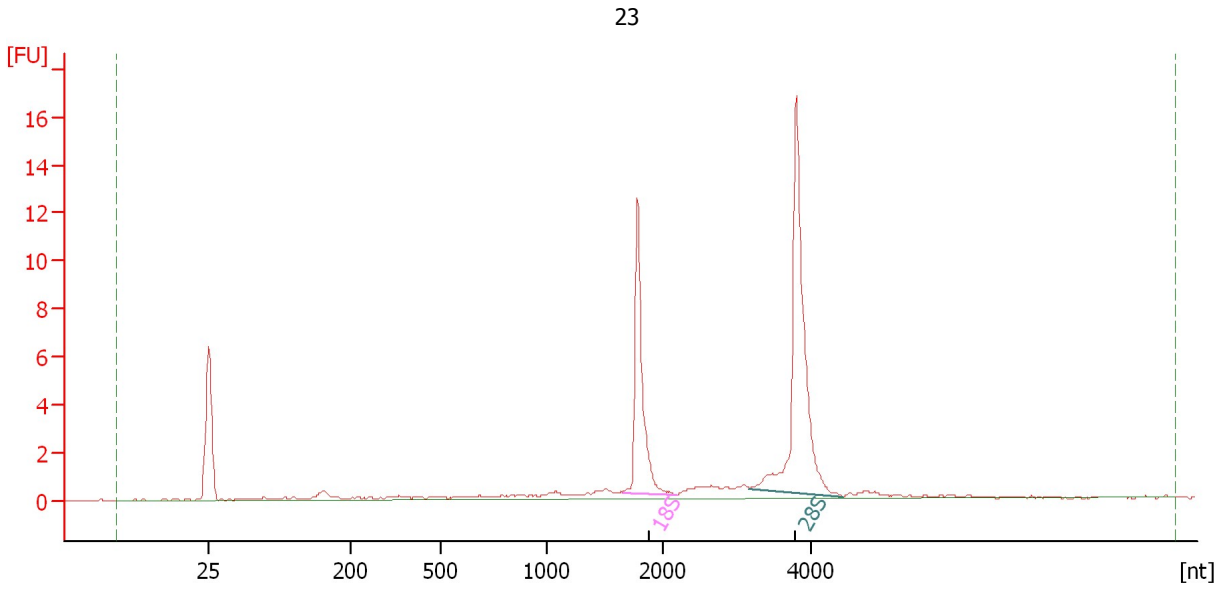
Fragment table for sample 10 : 22

| Name | Start Size [nt] | End Size [nt] | Area | % of total Area |
|------|-----------------|---------------|------|-----------------|
| 18S | 1,661 | 2,183 | 12.9 | 20.1 |
| 28S | 3,252 | 4,392 | 20.6 | 32.0 |

Assay Class: Eukaryote Total RNA Nano
Data Path: C:\...ents and Settings\Bioanalyzer\2012-12-17\2012-12-17_006.xad

Created: 12/17/2012 1:36:52 PM
Modified: 12/17/2012 1:59:57 PM

Electropherogram Summary Continued ...



Overall Results for sample 11 : 23

| | | | |
|-------------------------|----------|-----------------------------|---|
| RNA Area: | 45.7 | RNA Integrity Number (RIN): | 9.9 (B.02.08) |
| RNA Concentration: | 30 ng/μl | Result Flagging Color: | |
| rRNA Ratio [28s / 18s]: | 1.8 | Result Flagging Label: | RIN: 9.90 |

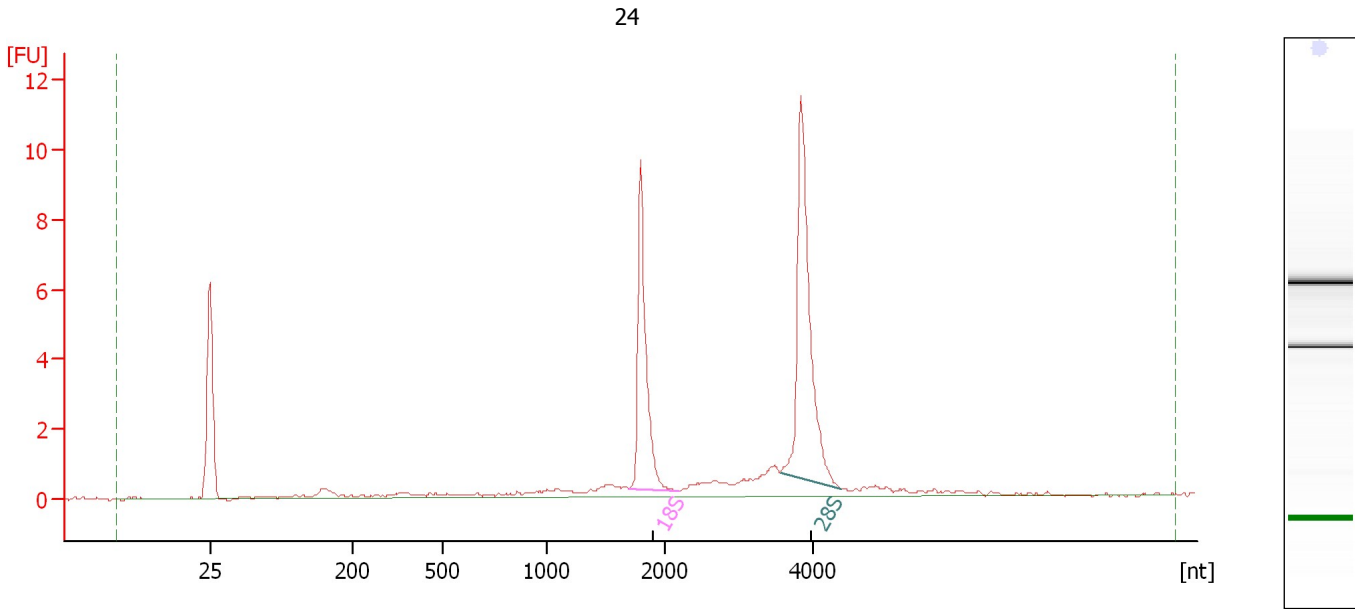
Fragment table for sample 11 : 23

| Name | Start Size [nt] | End Size [nt] | Area | % of total Area |
|------|-----------------|---------------|------|-----------------|
| 18S | 1,651 | 2,182 | 11.2 | 24.6 |
| 28S | 3,166 | 4,439 | 20.1 | 44.0 |

Assay Class: Eukaryote Total RNA Nano
Data Path: C:\...ents and Settings\Bioanalyzer\2012-12-17\2012-12-17_006.xad

Created: 12/17/2012 1:36:52 PM
Modified: 12/17/2012 1:59:57 PM

Electropherogram Summary Continued ...



Overall Results for sample 12 : 24

| | | | |
|-------------------------|----------|-----------------------------|---|
| RNA Area: | 38.9 | RNA Integrity Number (RIN): | 9.5 (B.02.08) |
| RNA Concentration: | 25 ng/μl | Result Flagging Color: | |
| rRNA Ratio [28s / 18s]: | 1.5 | Result Flagging Label: | RIN: 9.50 |

Fragment table for sample 12 : 24

| Name | Start Size [nt] | End Size [nt] | Area | % of total Area |
|------|-----------------|---------------|------|-----------------|
| 18S | 1,689 | 2,183 | 9.0 | 23.1 |
| 28S | 3,555 | 4,378 | 13.7 | 35.2 |

Assay Class: Eukaryote Total RNA Nano
Data Path: C:\...ents and Settings\Bioanalyzer\2012-12-17\2012-12-17_006.xad

Created: 12/17/2012 1:36:52 PM
Modified: 12/17/2012 1:59:57 PM

Gel Image

