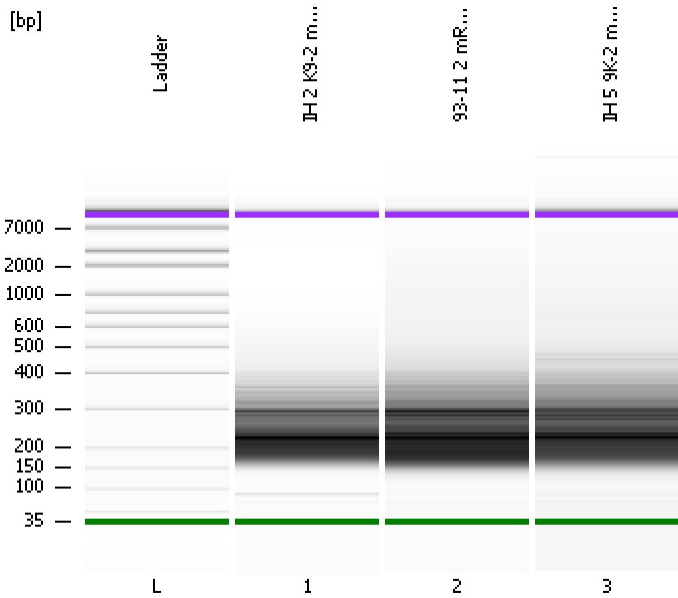


Assay Class: High Sensitivity DNA Assay  
Data Path: C:\...Settings\Bioanalyzer\2012-12-18\2012-12-18\_004\_mRNA\_Lib.xad

Created: 12/18/2012 1:13:03 PM  
Modified: 12/18/2012 2:04:44 PM

**Electrophoresis File Run Summary**



Instrument Information:

Instrument Name: DE13701086      Firmware: C.01.069  
Serial#: DE13701086      Type: G2938B

Assay Information:

Assay Origin Path: C:\Program Files\Agilent\2100 bioanalyzer\2100 expert\assays\dsDNA\High Sensitivity DNA.xsy  
Assay Class: High Sensitivity DNA Assay  
Version: 1.03  
Assay Comments: Copyright © 2003-2010 Agilent Technologies

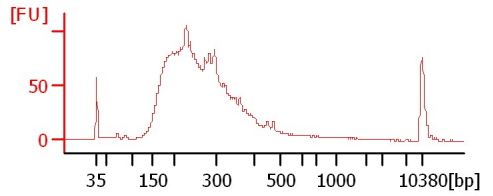
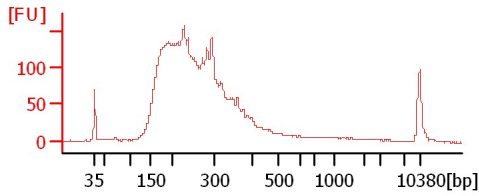
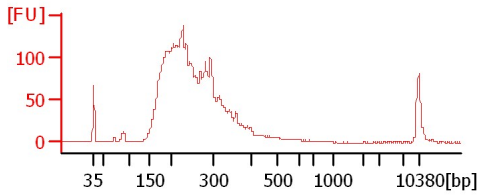
Chip Information:

Chip Lot #:  
Reagent Kit Lot #:  
Chip Comments:

**IH 2 K9-2 mRNA Lib 1:2**

**93-11 2 mRNA Lib 1:2**

**IH 5 9K-2 mRNA Lib 1:2**



Assay Class: High Sensitivity DNA Assay  
Data Path: C:\...Settings\Bioanalyzer\2012-12-18\2012-12-18\_004\_mRNA\_Lib.xad

Created: 12/18/2012 1:13:03 PM  
Modified: 12/18/2012 2:04:44 PM

**Electrophoresis File Run Summary (Chip Summary)**

Sample Name	Sample Comment	Rest. Digest	Status	Observation	Result Label	Result Color
IH 2 K9-2 mRNA Lib 1:2		<input type="checkbox"/>				
93-11 2 mRNA Lib 1:2		<input type="checkbox"/>				
IH 5 9K-2 mRNA Lib 1:2		<input type="checkbox"/>				
Ladder		<input type="checkbox"/>				

**Chip Lot #****Reagent Kit Lot #****Chip Comments :**

Assay Class: High Sensitivity DNA Assay  
Data Path: C:\...Settings\Bioanalyzer\2012-12-18\2012-12-18\_004\_mRNA\_Lib.xad

Created: 12/18/2012 1:13:03 PM  
Modified: 12/18/2012 2:04:44 PM

**Electrophoresis Assay Details**

**General Analysis Settings**

Number of Available Sample and Ladder Wells (Max.) : 12  
Minimum Visible Range [s] : 32  
Maximum Visible Range [s] : 138  
Start Analysis Time Range [s] : 33  
End Analysis Time Range [s] : 137.5  
Ladder Concentration [pg/μl] : 1950  
Uses Standard Area for Ladder Fragments  
Lower Marker Concentration [pg/μl] : 125  
Upper Marker Concentration [pg/μl] : 75  
Used Upper Marker for Quantitation  
Standard Curve Fit is Point to Point  
Show Data Aligned to Lower and Upper Marker

**Integrator Settings**

Integration Start Time [s] : 33.05  
Integration End Time [s] : 137  
Slope Threshold : 0.8  
Height Threshold [FU] : 5  
Area Threshold : 0.1  
Width Threshold [s] : 0.6  
Baseline Plateau [s] : 0.5

**Filter Settings**

Filter Width [s] : 0.5  
Polynomial Order : 4

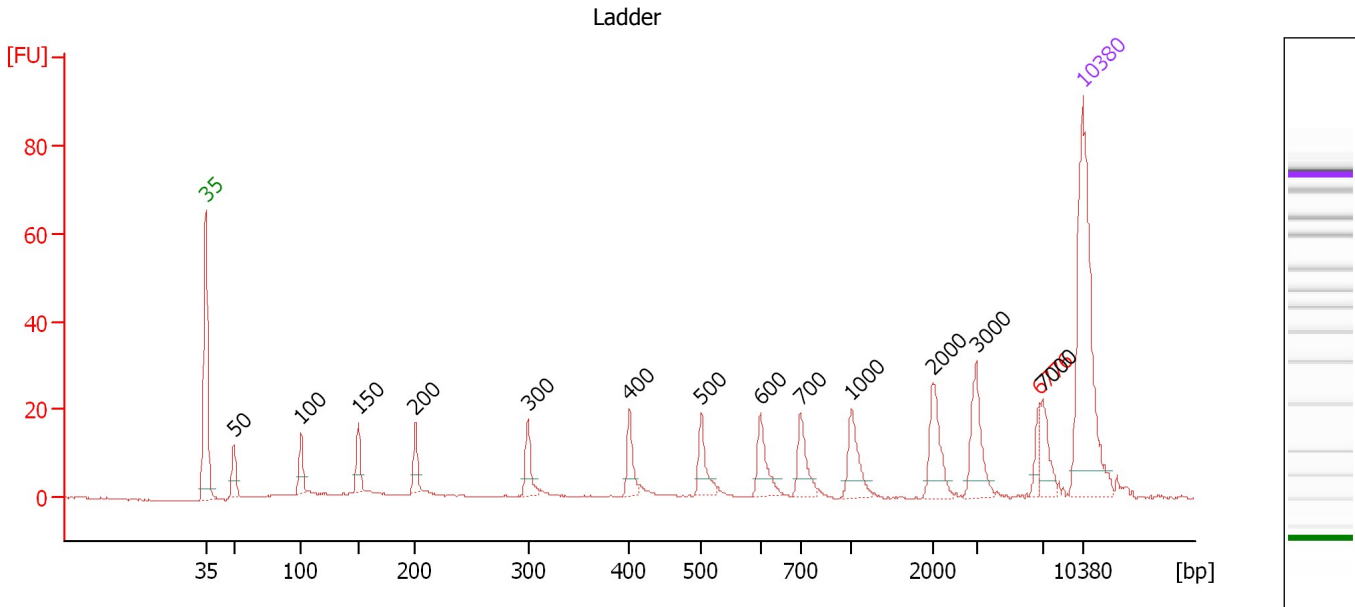
**Ladder**

Ladder Peak	Size	Area
1	35	160
2	50	210
3	100	208
4	150	221
5	200	242
6	300	270
7	400	305
8	500	306
9	600	336
10	700	321
11	1000	366
12	2000	413
13	3000	411
14	7000	400
15	10380	214

Assay Class: High Sensitivity DNA Assay  
 Data Path: C:\...Settings\Bioanalyzer\2012-12-18\2012-12-18\_004\_mRNA\_Lib.xad

Created: 12/18/2012 1:13:03 PM  
 Modified: 12/18/2012 2:04:44 PM

**Electropherogram Summary**



**Overall Results for Ladder**

Noise: 0.1

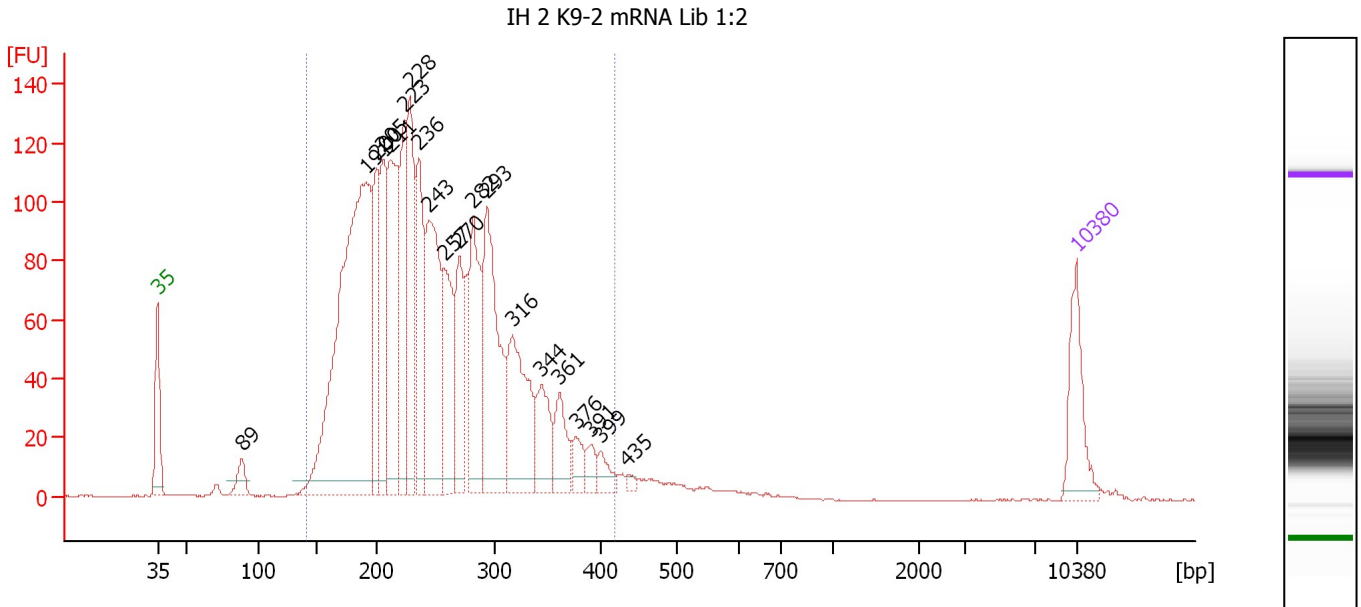
**Peak table for Ladder**

Peak	Size [bp]	Conc. [pg/μl]	Molarity [pmol/l]	Observations
1	35	125.00	5,411.3	Lower Marker
2	50	150.00	4,545.5	Ladder Peak
3	100	150.00	2,272.7	Ladder Peak
4	150	150.00	1,515.2	Ladder Peak
5	200	150.00	1,136.4	Ladder Peak
6	300	150.00	757.6	Ladder Peak
7	400	150.00	568.2	Ladder Peak
8	500	150.00	454.5	Ladder Peak
9	600	150.00	378.8	Ladder Peak
10	700	150.00	324.7	Ladder Peak
11	1,000	150.00	227.3	Ladder Peak
12	2,000	150.00	113.6	Ladder Peak
13	3,000	150.00	75.8	Ladder Peak
14	6,776	0.00	0.0	excluded peak
15	7,000	150.00	32.5	Ladder Peak
16	10,380	75.00	10.9	Upper Marker

Assay Class: High Sensitivity DNA Assay  
 Data Path: C:\...Settings\Bioanalyzer\2012-12-18\2012-12-18\_004\_mRNA\_Lib.xad

Created: 12/18/2012 1:13:03 PM  
 Modified: 12/18/2012 2:04:44 PM

**Electropherogram Summary Continued ...**



**Overall Results for sample 1 : IH 2 K9-2 mRNA Lib 1:2**

Number of peaks found: 20      Corr. Area 1: 2,496.8  
 Noise: 0.2

**Peak table for sample 1 : IH 2 K9-2 mRNA Lib 1:2**

Peak	Size [bp]	Conc. [pg/μl]	Molarity [pmol/l]	Observations
1	35	125.00	5,411.3	Lower Marker
2	89	36.35	620.1	
3	191	896.12	7,120.8	
4	200	172.24	1,307.5	
5	205	175.97	1,301.6	
6	211	266.71	1,914.9	
7	223	193.03	1,309.0	
8	228	225.65	1,498.3	
9	236	185.48	1,191.7	
10	243	303.45	1,888.7	
11	257	160.79	948.7	
12	270	130.56	733.6	
13	282	202.82	1,091.4	
14	293	281.08	1,453.5	
15	316	201.02	962.4	
16	344	86.55	381.4	
17	361	64.55	271.1	
18	376	30.55	123.1	
19	391	23.46	91.0	
20	399	24.97	94.8	
21	435	6.95	24.2	
22	10,380	75.00	10.9	Upper Marker

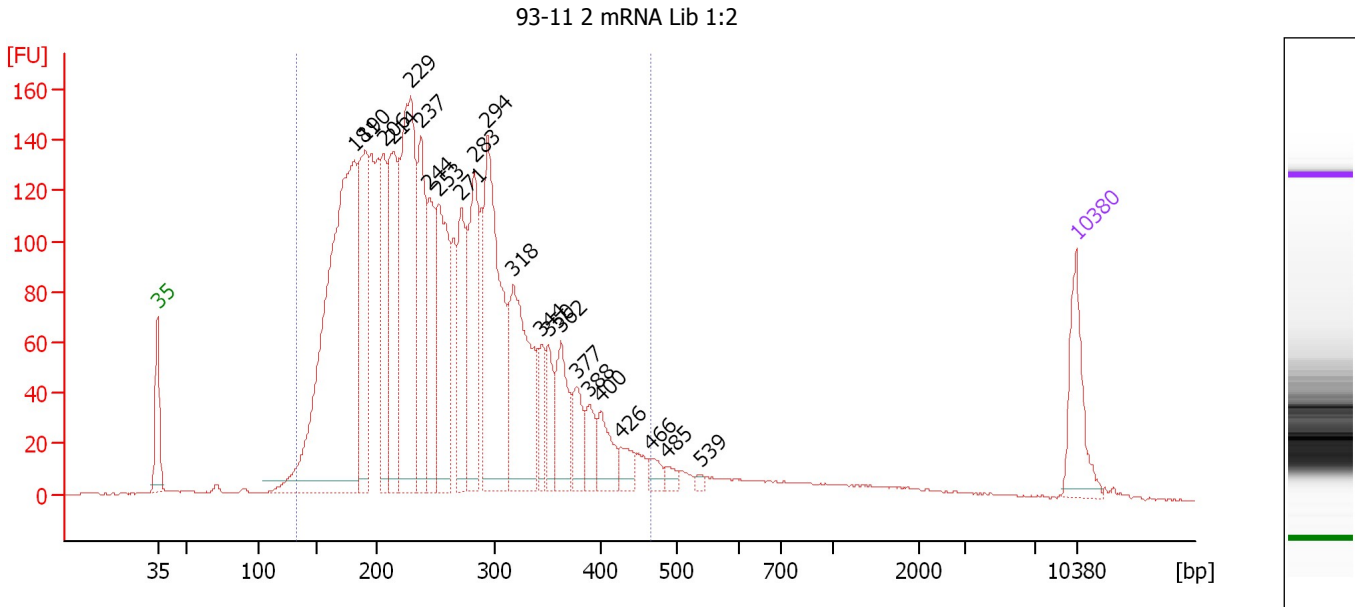
**Region table for sample 1 : IH 2 K9-2 mRNA Lib 1:2**

From [bp]	To [bp]	Average Size [bp]	Molarity [pmol/l]	Conc. [pg/μl]	Corr. Area	% of Total	Size distribution in CV [%]	Color
140	417	249	24,904.9	3,806.70	2,496.8	95	23.6	Blue

Assay Class: High Sensitivity DNA Assay  
 Data Path: C:\...Settings\Bioanalyzer\2012-12-18\2012-12-18\_004\_mRNA\_Lib.xad

Created: 12/18/2012 1:13:03 PM  
 Modified: 12/18/2012 2:04:44 PM

**Electropherogram Summary Continued ...**



**Overall Results for sample 2 : 93-11 2 mRNA Lib 1:2**

Number of peaks found: 22                      Corr. Area 1: 3,646.7  
 Noise: 0.2

**Peak table for sample 2 : 93-11 2 mRNA Lib 1:2**

Peak	Size [bp]	Conc. [pg/μl]	Molarity [pmol/l]	Observations
1	35	125.00	5,411.3	Lower Marker
2	181	921.98	7,717.6	
3	190	272.20	2,174.1	
4	206	175.74	1,294.4	
5	214	252.67	1,792.7	
6	229	443.96	2,940.9	
7	237	206.85	1,322.1	
8	244	158.27	981.2	
9	253	252.24	1,512.3	
10	271	164.34	917.7	
11	283	210.90	1,130.8	
12	294	359.17	1,851.9	
13	318	263.31	1,256.3	
14	344	53.54	236.2	
15	350	56.67	245.3	
16	362	94.03	393.7	
17	377	55.52	223.1	
18	388	41.31	161.1	
19	400	54.62	207.0	
20	426	28.24	100.5	
21	466	18.62	60.6	
22	485	12.68	39.6	
23	539	5.35	15.0	
24	10,380	75.00	10.9	Upper Marker

Assay Class: High Sensitivity DNA Assay  
Data Path: C:\...Settings\Bioanalyzer\2012-12-18\2012-12-18\_004\_mRNA\_Lib.xad

Created: 12/18/2012 1:13:03 PM  
Modified: 12/18/2012 2:04:44 PM

**Electropherogram Summary Continued ...**

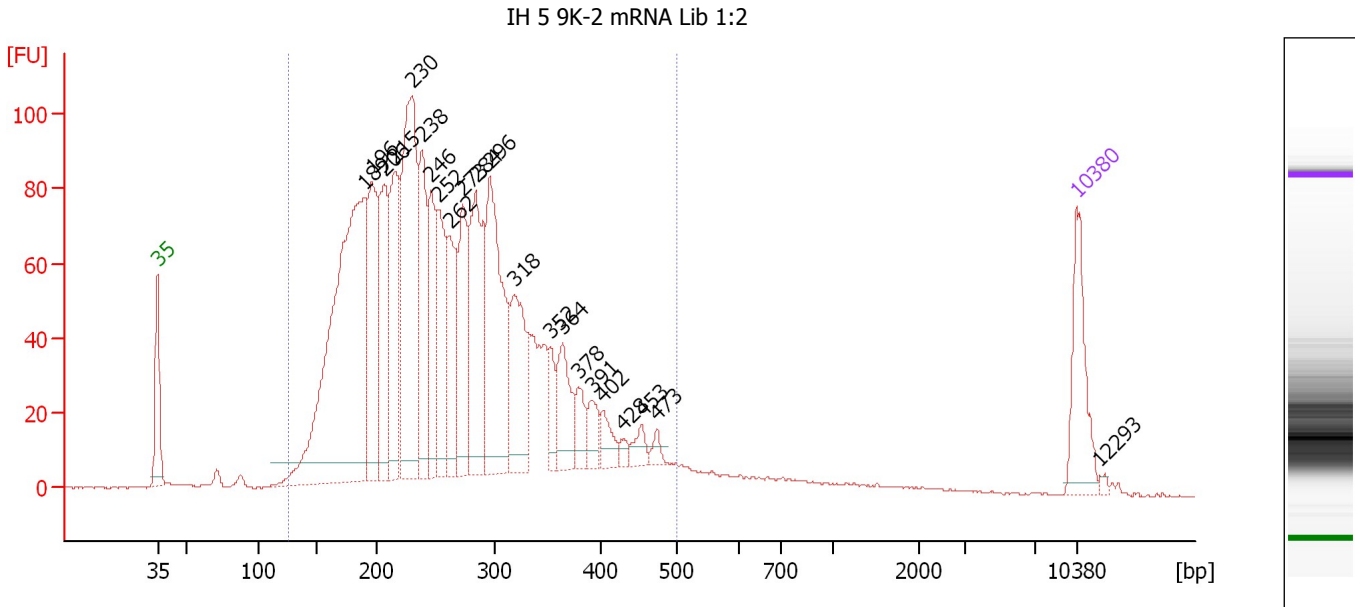
... Region table for sample 2 : 93-11 2 mRNA Lib 1:2

From [bp]	To [bp]	Average Size [bp]	Molarity [pmol/l]	Conc. [pg/μl]	Corr. Area	% of Total	Size distribution in CV [%]	Color
133	465	255	30,427.8	4,627.81	3,646.7	93	27.4	■

Assay Class: High Sensitivity DNA Assay  
 Data Path: C:\...Settings\Bioanalyzer\2012-12-18\2012-12-18\_004\_mRNA\_Lib.xad

Created: 12/18/2012 1:13:03 PM  
 Modified: 12/18/2012 2:04:44 PM

**Electropherogram Summary Continued ...**



**Overall Results for sample 3 : IH 5 9K-2 mRNA Lib 1:2**

Number of peaks found: 22                      Corr. Area 1: 2,287.6  
 Noise: 0.2

**Peak table for sample 3 : IH 5 9K-2 mRNA Lib 1:2**

Peak	Size [bp]	Conc. [pg/μl]	Molarity [pmol/l]	Observations
1	35	125.00	5,411.3	Lower Marker
2	189	735.21	5,895.9	
3	196	194.03	1,500.9	
4	206	176.93	1,298.9	
5	215	189.49	1,332.7	
6	230	363.78	2,396.2	
7	238	162.09	1,031.6	
8	246	125.67	775.2	
9	252	138.69	835.0	
10	262	123.49	714.9	
11	273	136.93	760.6	
12	284	214.76	1,146.4	
13	296	270.42	1,384.6	
14	318	149.95	715.1	
15	352	37.39	160.9	
16	364	76.81	319.9	
17	378	34.83	139.5	
18	391	31.59	122.4	
19	402	28.26	106.5	
20	428	8.84	31.3	
21	453	19.32	64.6	
22	473	11.02	35.3	
23	10,380	75.00	10.9	Upper Marker
24	12,293	0.00	0.0	



Assay Class: High Sensitivity DNA Assay  
Data Path: C:\...Settings\Bioanalyzer\2012-12-18\2012-12-18\_004\_mRNA\_Lib.xad

Created: 12/18/2012 1:13:03 PM  
Modified: 12/18/2012 2:04:44 PM

**Electropherogram Summary Continued ...**

... Region table for sample 3 : IH 5 9K-2 mRNA Lib 1:2

From [bp]	To [bp]	Average Size [bp]	Molarity [pmol/l]	Conc. [pg/μl]	Corr. Area	% of Total	Size distribution in CV [%]	Color
127	499	264	23,694.9	3,707.03	2,287.6	94	28.3	■

Assay Class: High Sensitivity DNA Assay  
Data Path: C:\...Settings\Bioanalyzer\2012-12-18\2012-12-18\_004\_mRNA\_Lib.xad

Created: 12/18/2012 1:13:03 PM  
Modified: 12/18/2012 2:04:44 PM

**Gel Image**

