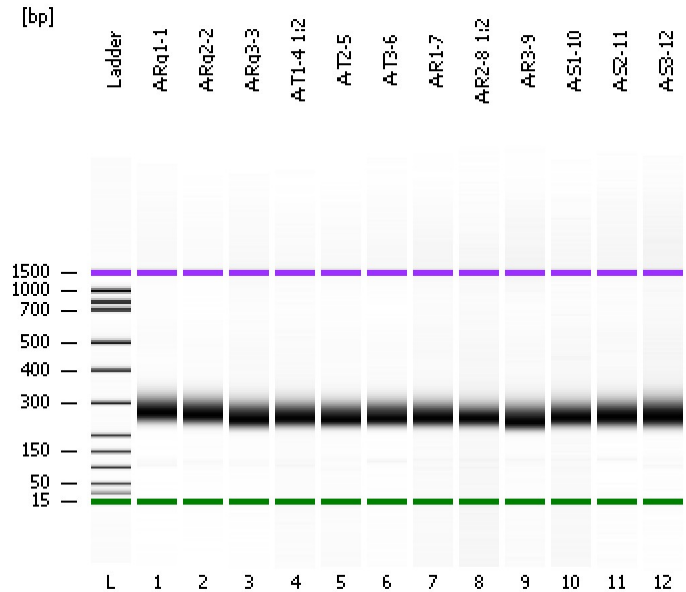


Assay Class: DNA 1000  
Data Path: C:\...ents and Settings\Bioanalyzer\2012-12-19\2012-12-19\_003.xad

Created: 12/19/2012 12:02:56 PM  
Modified: 12/19/2012 12:48:39 PM

### Electrophoresis File Run Summary



#### Instrument Information:

Instrument Name: DE13701086      Firmware: C.01.069  
Serial#: DE13701086      Type: G2938B

#### Assay Information:

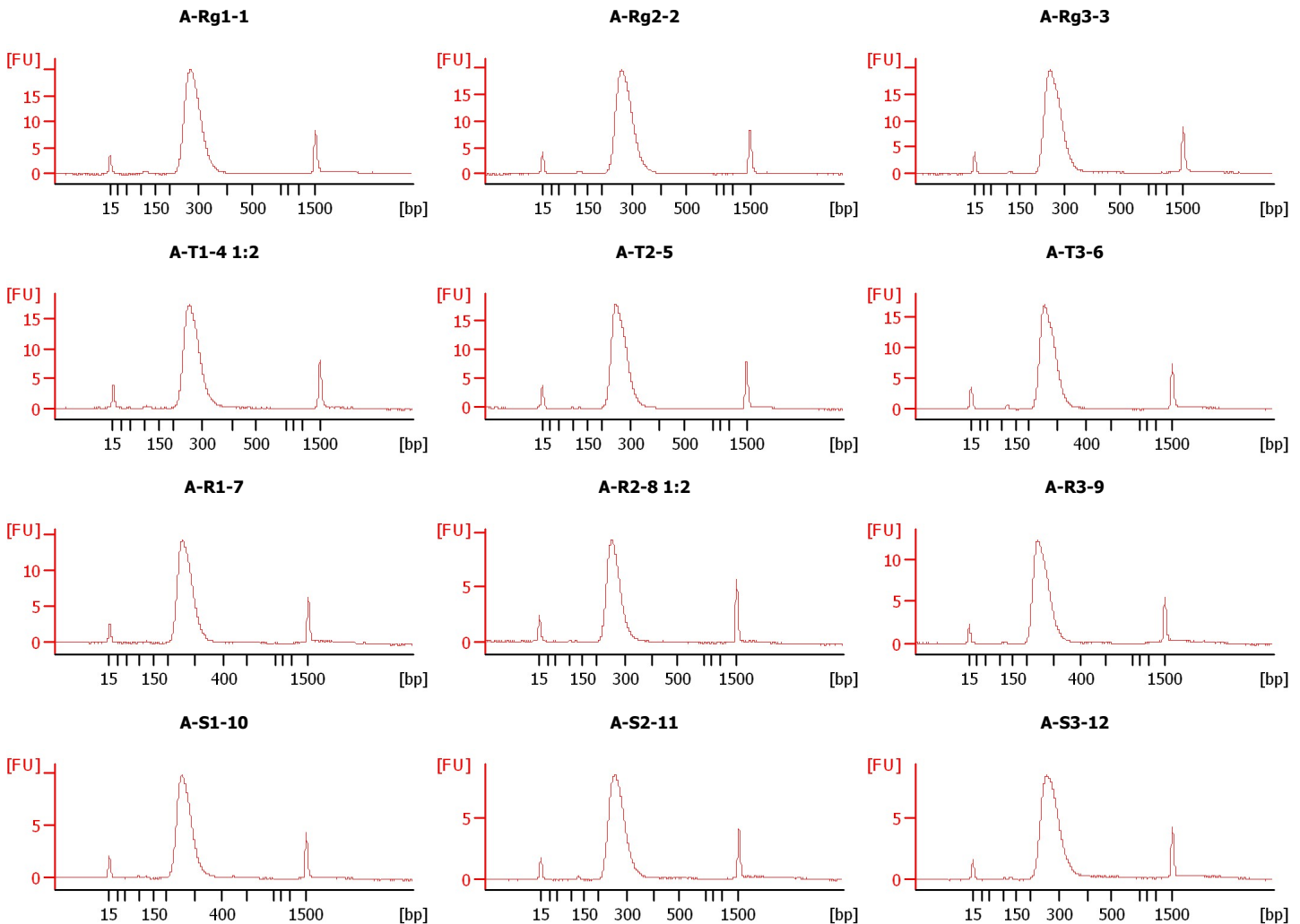
Assay Origin Path: C:\Program Files\Agilent\2100 bioanalyzer\2100 expert\assays\dsDNA\DNA 1000 Series II.xsy

Assay Class: DNA 1000  
Version: 2.3  
Assay Comments: DNA Analysis 25 -1000 bp

© Copyright 2003-2009 Agilent Technologies, Inc.

#### Chip Information:

Chip Lot #:   
Reagent Kit Lot #:   
Chip Comments:



Assay Class: DNA 1000  
Data Path: C:\...ents and Settings\Bioanalyzer\2012-12-19\2012-12-19\_003.xad

Created: 12/19/2012 12:02:56 PM  
Modified: 12/19/2012 12:48:39 PM

**Electrophoresis File Run Summary (Chip Summary)**

Sample Name	Sample Comment	Rest. Digest	Status	Observation	Result Label	Result Color
A-Rg1-1		<input type="checkbox"/>	✓			
A-Rg2-2		<input type="checkbox"/>	✓			
A-Rg3-3		<input type="checkbox"/>	✓			
A-T1-4 1:2		<input type="checkbox"/>	✓			
A-T2-5		<input type="checkbox"/>	✓			
A-T3-6		<input type="checkbox"/>	✓			
A-R1-7		<input type="checkbox"/>	✓			
A-R2-8 1:2		<input type="checkbox"/>	✓			
A-R3-9		<input type="checkbox"/>	✓			
A-S1-10		<input type="checkbox"/>	✓			
A-S2-11		<input type="checkbox"/>	✓			
A-S3-12		<input type="checkbox"/>	✓			
Ladder		<input type="checkbox"/>	✓			

**Chip Lot #**

**Reagent Kit Lot #**

**Chip Comments :**

Assay Class: DNA 1000  
Data Path: C:\...ents and Settings\Bioanalyzer\2012-12-19\2012-12-19\_003.xad

Created: 12/19/2012 12:02:56 PM  
Modified: 12/19/2012 12:48:39 PM

**Electrophoresis Assay Details**

**General Analysis Settings**

Number of Available Sample and Ladder Wells (Max.) : 13  
Minimum Visible Range [s] : 30  
Maximum Visible Range [s] : 129  
Start Analysis Time Range [s] : 30  
End Analysis Time Range [s] : 128.95  
Ladder Concentration [ng/μl] : 44  
Uses Standard Area for Ladder Fragments  
Lower Marker Concentration [ng/μl] : 4.2  
Upper Marker Concentration [ng/μl] : 2.1  
Used Upper Marker for Quantitation  
Standard Curve Fit is Point to Point  
Show Data Aligned to Lower and Upper Marker

**Integrator Settings**

Integration Start Time [s] : 30  
Integration End Time [s] : 128.95  
Slope Threshold : 0.5  
Height Threshold [FU] : 2  
Area Threshold : 0.1  
Width Threshold [s] : 0.5  
Baseline Plateau [s] : 0.5

**Filter Settings**

Filter Width [s] : 0.5  
Polynomial Order : 4

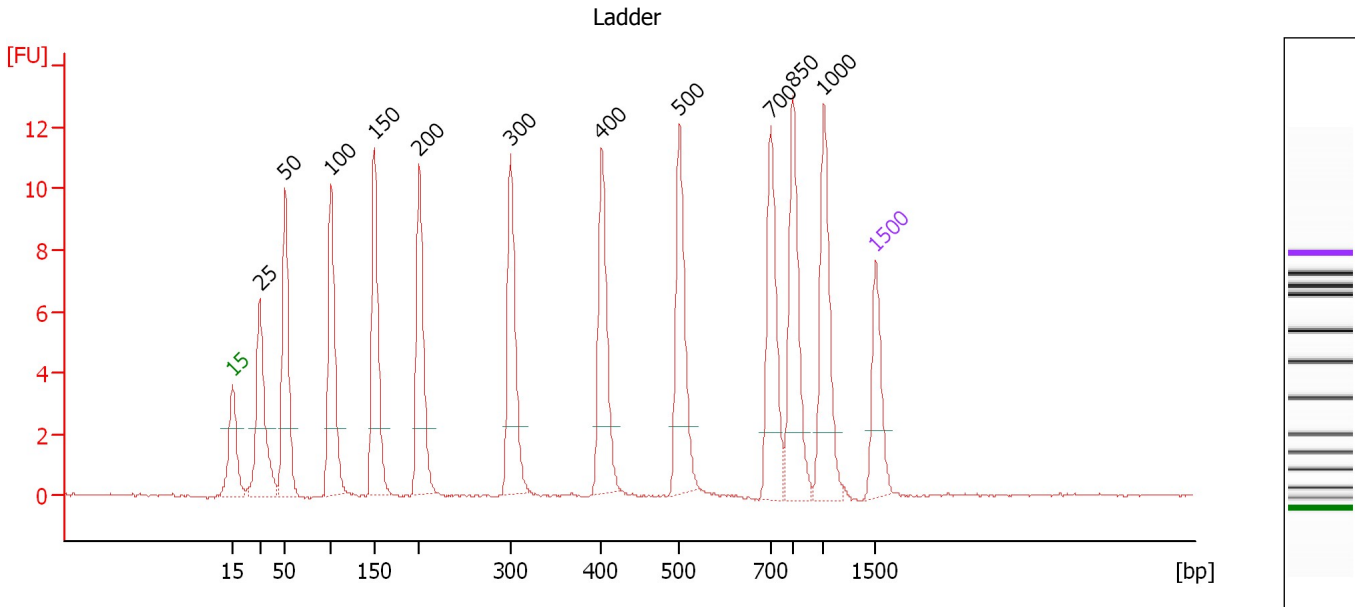
**Ladder**

Ladder Peak	Size	Area
1	15	25
2	25	26
3	50	34
4	100	41
5	150	45
6	200	52
7	300	63
8	400	76
9	500	83
10	700	88
11	850	86
12	1000	90
13	1500	52

Assay Class: DNA 1000  
 Data Path: C:\...ents and Settings\Bioanalyzer\2012-12-19\2012-12-19\_003.xad

Created: 12/19/2012 12:02:56 PM  
 Modified: 12/19/2012 12:48:39 PM

**Electropherogram Summary**



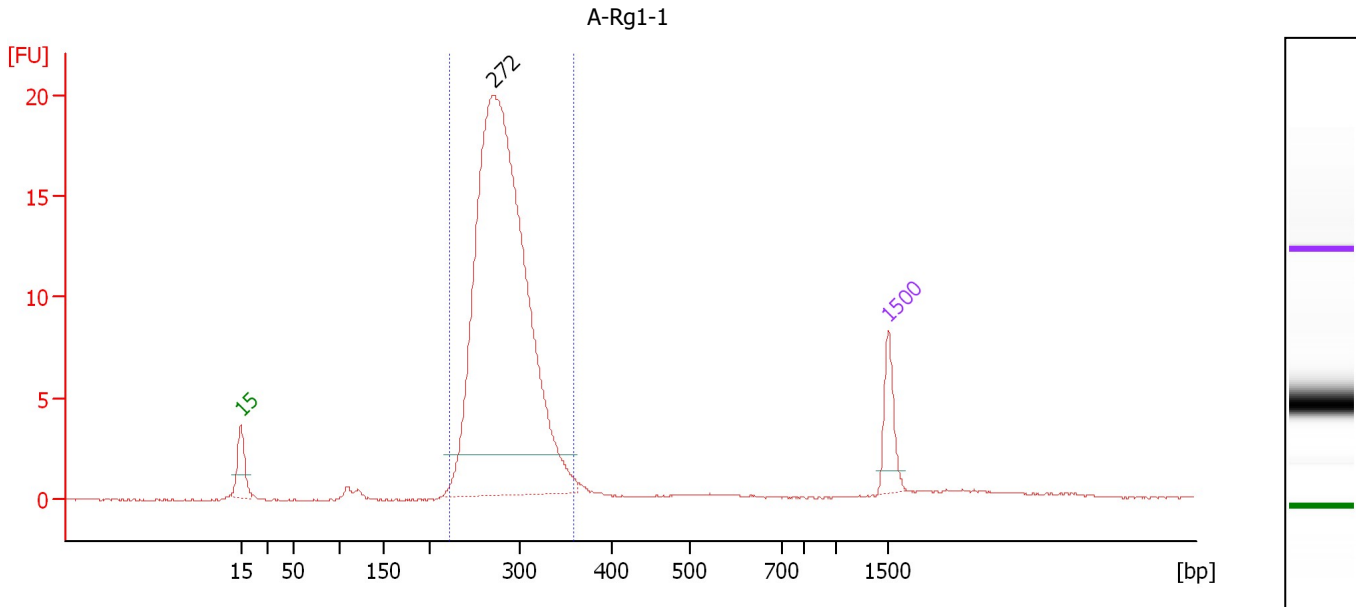
**Peak table for Ladder**

Peak	Size [bp]	Conc. [ng/μl]	Molarity [nmol/l]	Observations
1	15	4.20	424.2	Lower Marker
2	25	4.00	242.4	Ladder Peak
3	50	4.00	121.2	Ladder Peak
4	100	4.00	60.6	Ladder Peak
5	150	4.00	40.4	Ladder Peak
6	200	4.00	30.3	Ladder Peak
7	300	4.00	20.2	Ladder Peak
8	400	4.00	15.2	Ladder Peak
9	500	4.00	12.1	Ladder Peak
10	700	4.00	8.7	Ladder Peak
11	850	4.00	7.1	Ladder Peak
12	1,000	4.00	6.1	Ladder Peak
13	1,500	2.10	2.1	Upper Marker

Assay Class: DNA 1000  
 Data Path: C:\...ents and Settings\Bioanalyzer\2012-12-19\2012-12-19\_003.xad

Created: 12/19/2012 12:02:56 PM  
 Modified: 12/19/2012 12:48:39 PM

**Electropherogram Summary Continued ...**



**Overall Results for sample 1 : A-Rg1-1**

Number of peaks found: 1                      Area 1: 104.3

**Peak table for sample 1 : A-Rg1-1**

Peak	Size [bp]	Conc. [ng/μl]	Molarity [nmol/l]	Observations
1	15	4.20	424.2	Lower Marker
2	272	45.72	255.1	
3	1,500	2.10	2.1	Upper Marker

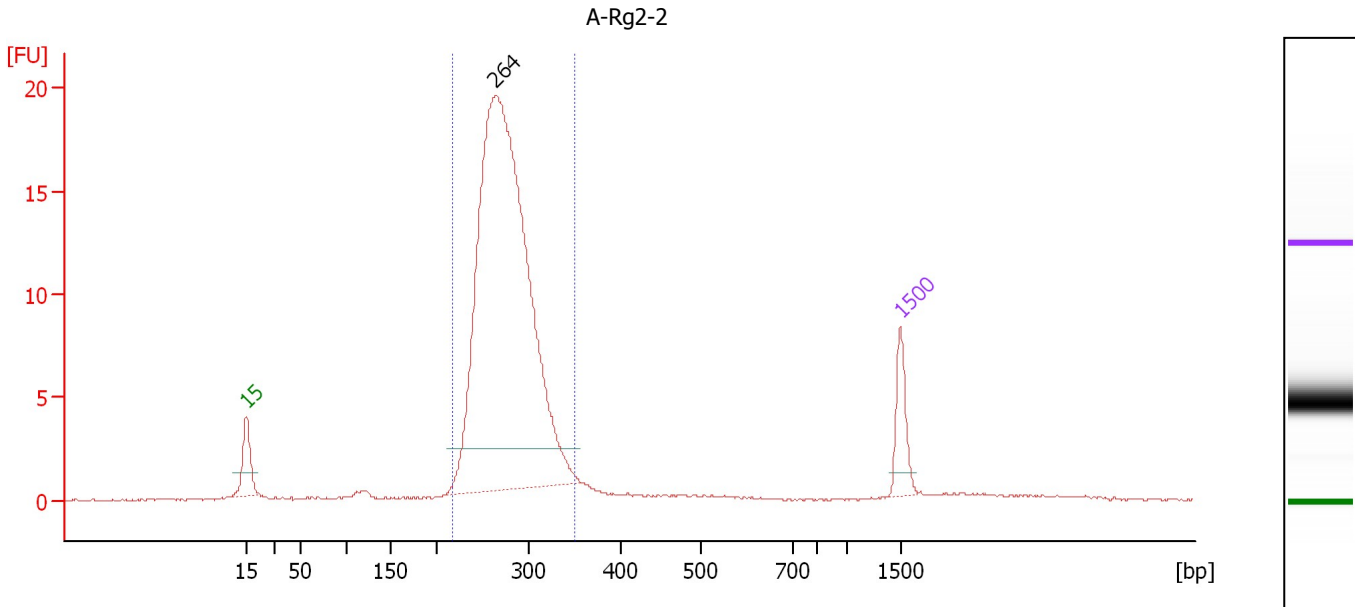
**Region table for sample 1 : A-Rg1-1**

From [bp]	To [bp]	Area	% of Total	Molarity [nmol/l]	Average Size [bp]	Size distribution in CV [%]	Conc. [ng/μl]	Co Name
224	357	104.3	93	245.7	282	9.1	45.41	Region 1

Assay Class: DNA 1000  
 Data Path: C:\...ents and Settings\Bioanalyzer\2012-12-19\2012-12-19\_003.xad

Created: 12/19/2012 12:02:56 PM  
 Modified: 12/19/2012 12:48:39 PM

**Electropherogram Summary Continued ...**



**Overall Results for sample 2 : A-Rg2-2**

Number of peaks found: 1                      Area 1: 104.5

**Peak table for sample 2 : A-Rg2-2**

Peak	Size [bp]	Conc. [ng/μl]	Molarity [nmol/l]	Observations
1	15	4.20	424.2	Lower Marker
2	264	43.92	252.1	
3	1,500	2.10	2.1	Upper Marker

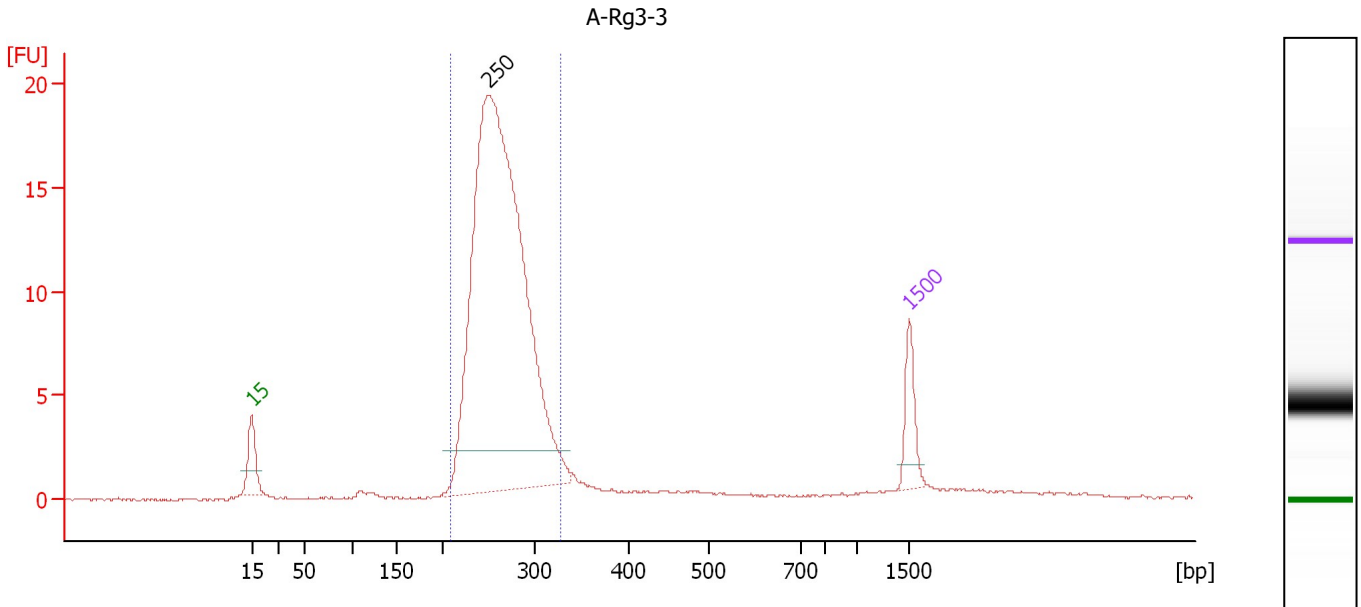
**Region table for sample 2 : A-Rg2-2**

From [bp]	To [bp]	Area	% of Total	Molarity [nmol/l]	Average Size [bp]	Size distribution in CV [%]	Conc. [ng/μl]	Co Name
217	350	104.5	90	250.4	276	9.4	45.29	Region 1

Assay Class: DNA 1000  
 Data Path: C:\...ents and Settings\Bioanalyzer\2012-12-19\2012-12-19\_003.xad

Created: 12/19/2012 12:02:56 PM  
 Modified: 12/19/2012 12:48:39 PM

**Electropherogram Summary Continued ...**



**Overall Results for sample 3 : A-Rg3-3**

Number of peaks found: 1                      Area 1: 102.5

**Peak table for sample 3 : A-Rg3-3**

Peak	Size [bp]	Conc. [ng/μl]	Molarity [nmol/l]	Observations
1	15	4.20	424.2	Lower Marker
2	250	46.40	281.1	
3	1,500	2.10	2.1	Upper Marker

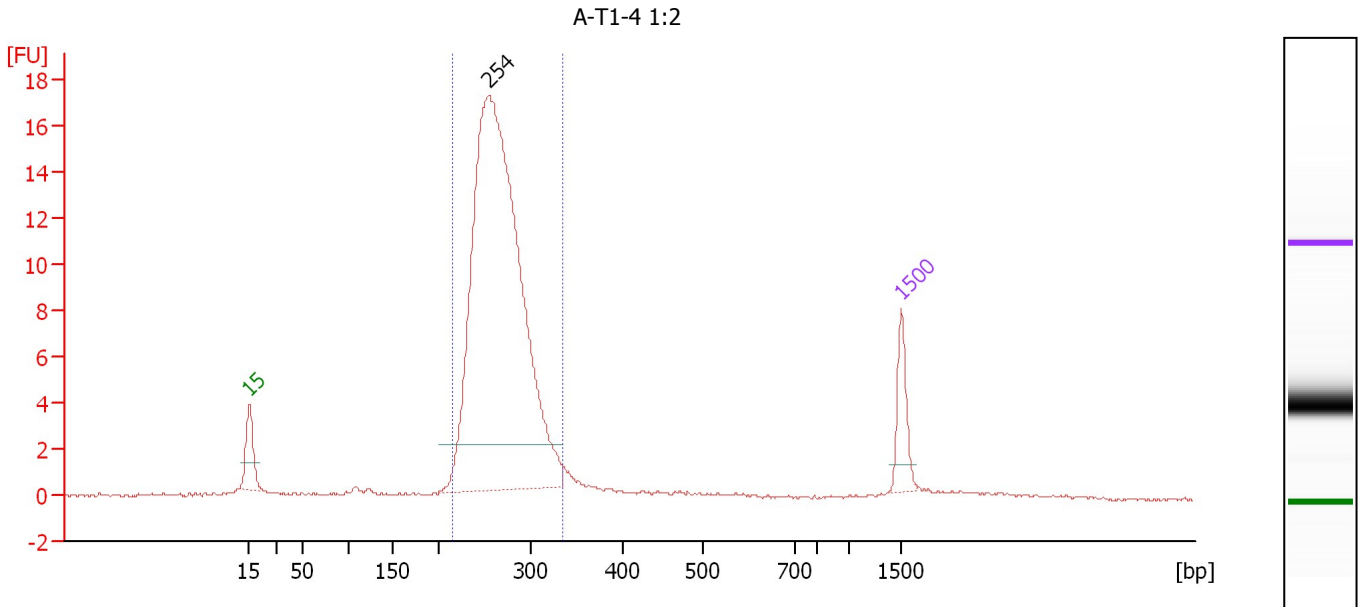
**Region table for sample 3 : A-Rg3-3**

From [bp]	To [bp]	Area	% of Total	Molarity [nmol/l]	Average Size [bp]	Size distribution in CV [%]	Conc. [ng/μl]	Co Name
208	327	102.5	87	269.4	263	9.4	46.56	Region 1

Assay Class: DNA 1000  
 Data Path: C:\...ents and Settings\Bioanalyzer\2012-12-19\2012-12-19\_003.xad

Created: 12/19/2012 12:02:56 PM  
 Modified: 12/19/2012 12:48:39 PM

**Electropherogram Summary Continued ...**



**Overall Results for sample 4 : A-T1-4 1:2**

Number of peaks found: 1      Area 1: 87.2

**Peak table for sample 4 : A-T1-4 1:2**

Peak	Size [bp]	Conc. [ng/μl]	Molarity [nmol/l]	Observations
1	15	4.20	424.2	Lower Marker
2	254	41.82	249.3	
3	1,500	2.10	2.1	Upper Marker

**Region table for sample 4 : A-T1-4 1:2**

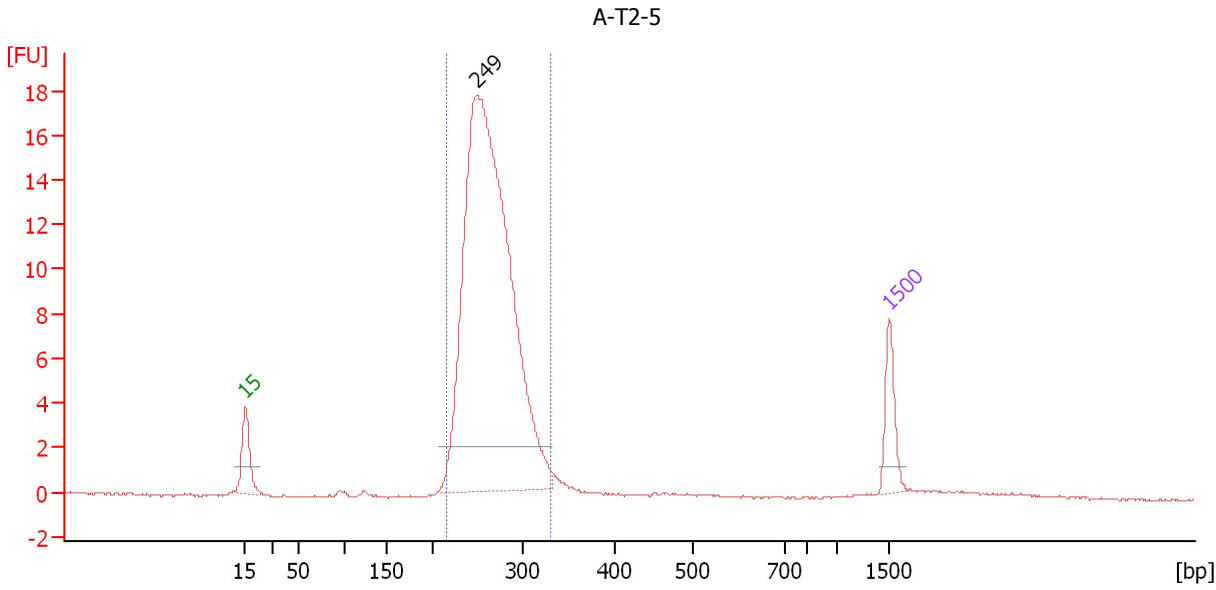
From [bp]	To [bp]	Area	% of Total	Molarity [nmol/l]	Average Size [bp]	Size distribution in CV [%]	Conc. [ng/μl]	Co Name
216	335	87.2	86	241.2	266	9.2	42.21	Region 1



Assay Class: DNA 1000  
 Data Path: C:\...ents and Settings\Bioanalyzer\2012-12-19\2012-12-19\_003.xad

Created: 12/19/2012 12:02:56 PM  
 Modified: 12/19/2012 12:48:39 PM

**Electropherogram Summary Continued ...**



**Overall Results for sample 5 : A-T2-5**

Number of peaks found: 1      Area 1: 85.2

**Peak table for sample 5 : A-T2-5**

Peak	Size [bp]	Conc. [ng/μl]	Molarity [nmol/l]	Observations
1	15	4.20	424.2	Lower Marker
2	249	41.68	254.0	
3	1,500	2.10	2.1	Upper Marker

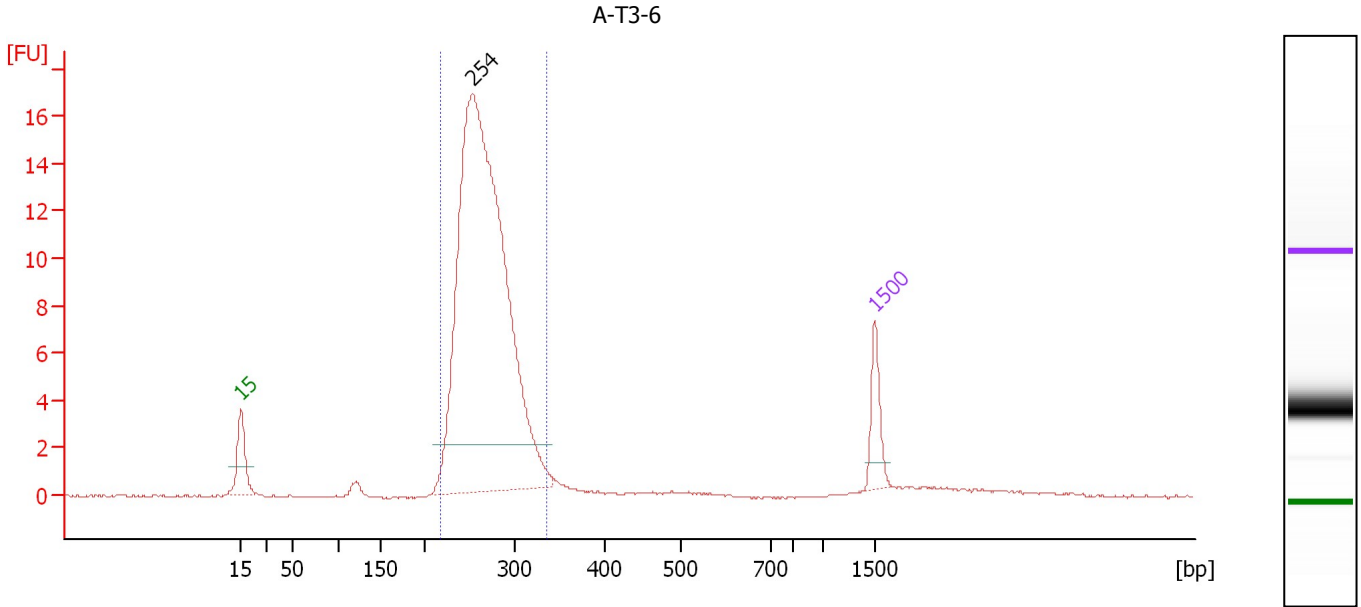
**Region table for sample 5 : A-T2-5**

From [bp]	To [bp]	Area	% of Total	Molarity [nmol/l]	Average Size [bp]	Size distribution in CV [%]	Conc. [ng/μl]	Co Name
216	329	85.2	93	236.8	264	8.9	41.07	Region 1

Assay Class: DNA 1000  
 Data Path: C:\...ents and Settings\Bioanalyzer\2012-12-19\2012-12-19\_003.xad

Created: 12/19/2012 12:02:56 PM  
 Modified: 12/19/2012 12:48:39 PM

**Electropherogram Summary Continued ...**



**Overall Results for sample 6 : A-T3-6**

Number of peaks found: 1                      Area 1: 81.9

**Peak table for sample 6 : A-T3-6**

Peak	Size [bp]	Conc. [ng/μl]	Molarity [nmol/l]	Observations
1	15	4.20	424.2	Lower Marker
2	254	45.14	269.5	
3	1,500	2.10	2.1	Upper Marker

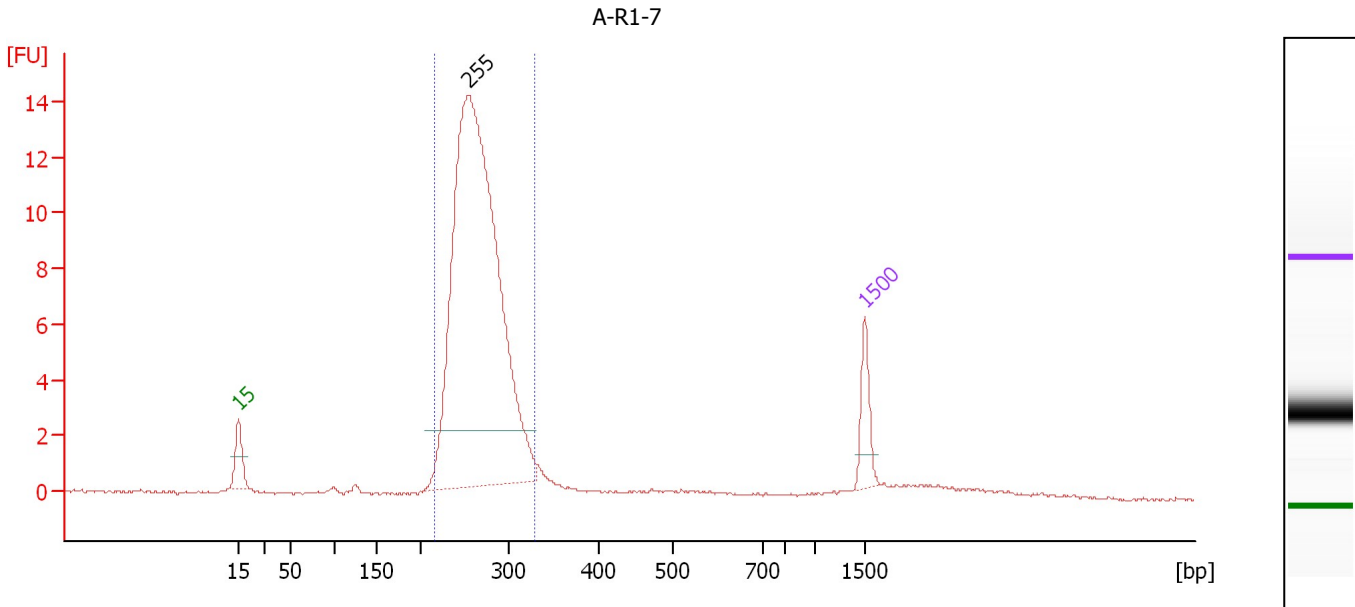
**Region table for sample 6 : A-T3-6**

From [bp]	To [bp]	Area	% of Total	Molarity [nmol/l]	Average Size [bp]	Size distribution in CV [%]	Conc. [ng/μl]	Co Name
216	335	81.9	90	255.8	267	9.1	44.89	Region 1

Assay Class: DNA 1000  
 Data Path: C:\...ents and Settings\Bioanalyzer\2012-12-19\2012-12-19\_003.xad

Created: 12/19/2012 12:02:56 PM  
 Modified: 12/19/2012 12:48:39 PM

**Electropherogram Summary Continued ...**



**Overall Results for sample 7 : A-R1-7**

Number of peaks found: 1      Area 1: 67.9

**Peak table for sample 7 : A-R1-7**

Peak	Size [bp]	Conc. [ng/μl]	Molarity [nmol/l]	Observations
1	15	4.20	424.2	Lower Marker
2	255	45.30	269.0	
3	1,500	2.10	2.1	Upper Marker

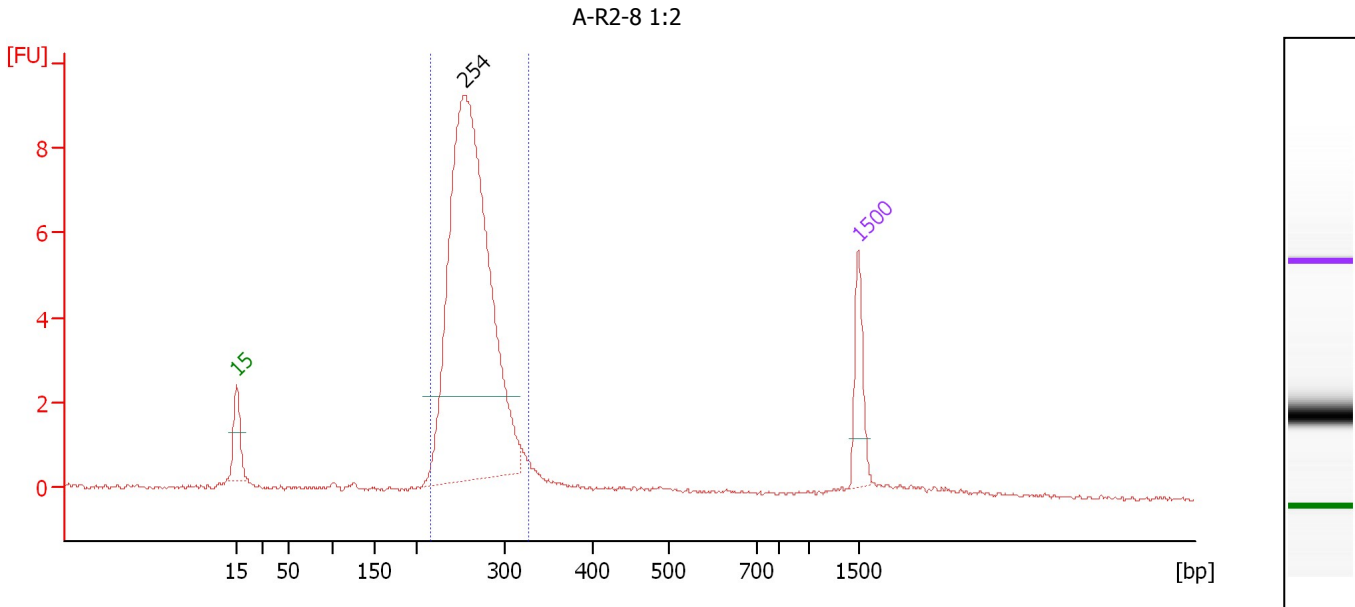
**Region table for sample 7 : A-R1-7**

From [bp]	To [bp]	Area	% of Total	Molarity [nmol/l]	Average Size [bp]	Size distribution in CV [%]	Conc. [ng/μl]	Co Name
215	329	67.9	85	264.2	266	8.9	46.14	Region 1

Assay Class: DNA 1000  
 Data Path: C:\...ents and Settings\Bioanalyzer\2012-12-19\2012-12-19\_003.xad

Created: 12/19/2012 12:02:56 PM  
 Modified: 12/19/2012 12:48:39 PM

**Electropherogram Summary Continued ...**



**Overall Results for sample 8 : A-R2-8 1:2**

Number of peaks found: 1                      Area 1: 40.6

**Peak table for sample 8 : A-R2-8 1:2**

Peak	Size [bp]	Conc. [ng/μl]	Molarity [nmol/l]	Observations
1	15	4.20	424.2	Lower Marker
2	254	28.51	169.7	
3	1,500	2.10	2.1	Upper Marker

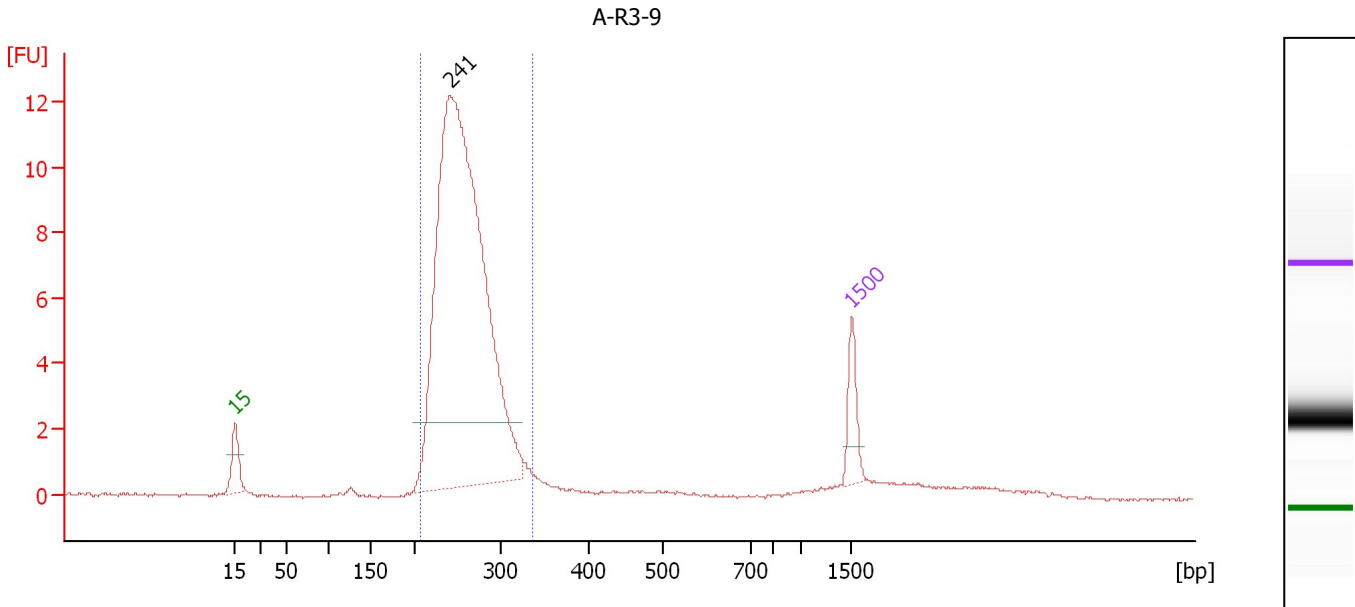
**Region table for sample 8 : A-R2-8 1:2**

From [bp]	To [bp]	Area	% of Total	Molarity [nmol/l]	Average Size [bp]	Size distribution in CV [%]	Conc. [ng/μl]	Co Name
214	327	40.6	84	174.7	263	8.6	30.20	Region 1

Assay Class: DNA 1000  
 Data Path: C:\...ents and Settings\Bioanalyzer\2012-12-19\2012-12-19\_003.xad

Created: 12/19/2012 12:02:56 PM  
 Modified: 12/19/2012 12:48:39 PM

**Electropherogram Summary Continued ...**



**Overall Results for sample 9 : A-R3-9**

Number of peaks found: 1      Area 1: 61.0

**Peak table for sample 9 : A-R3-9**

Peak	Size [bp]	Conc. [ng/μl]	Molarity [nmol/l]	Observations
1	15	4.20	424.2	Lower Marker
2	241	48.91	307.6	
3	1,500	2.10	2.1	Upper Marker

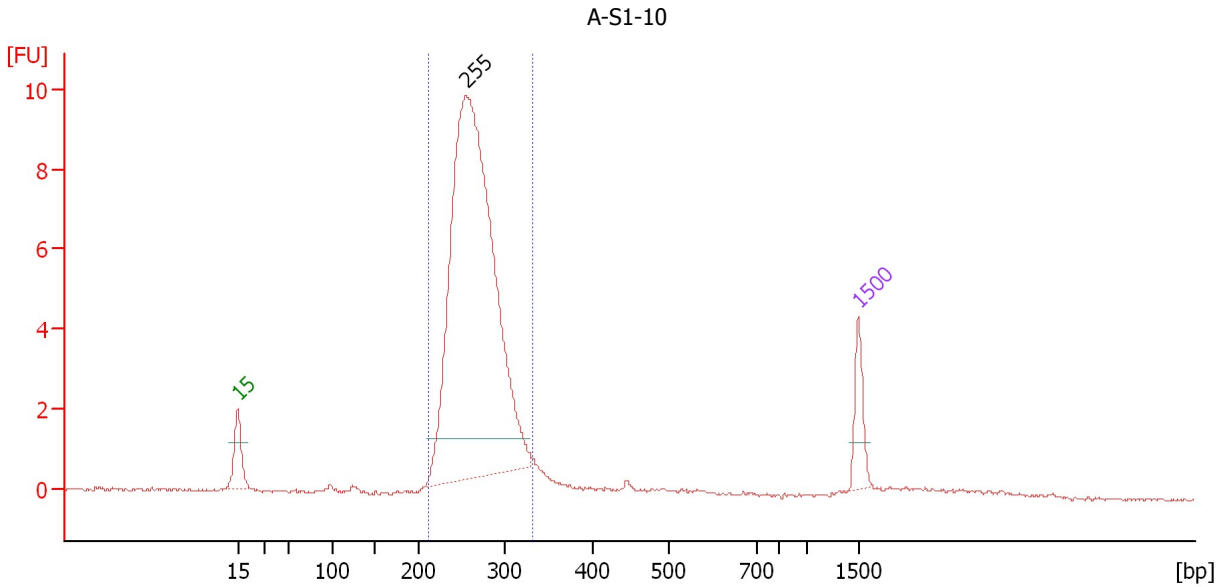
**Region table for sample 9 : A-R3-9**

From [bp]	To [bp]	Area	% of Total	Molarity [nmol/l]	Average Size [bp]	Size distribution in CV [%]	Conc. [ng/μl]	Co Name
207	336	61.0	85	295.4	258	10.1	50.10	Region 1

Assay Class: DNA 1000  
 Data Path: C:\...ents and Settings\Bioanalyzer\2012-12-19\2012-12-19\_003.xad

Created: 12/19/2012 12:02:56 PM  
 Modified: 12/19/2012 12:48:39 PM

**Electropherogram Summary Continued ...**



**Setpoint Deviations for sample 10 : A-S1-10**

Height Threshold [FU] : 1

**Overall Results for sample 10 : A-S1-10**

Number of peaks found: 1                      Area 1: 46.2

**Peak table for sample 10 : A-S1-10**

Peak	Size [bp]	Conc. [ng/μl]	Molarity [nmol/l]	Observations
1	15	4.20	424.2	Lower Marker
2	255	43.17	257.0	
3	1,500	2.10	2.1	Upper Marker

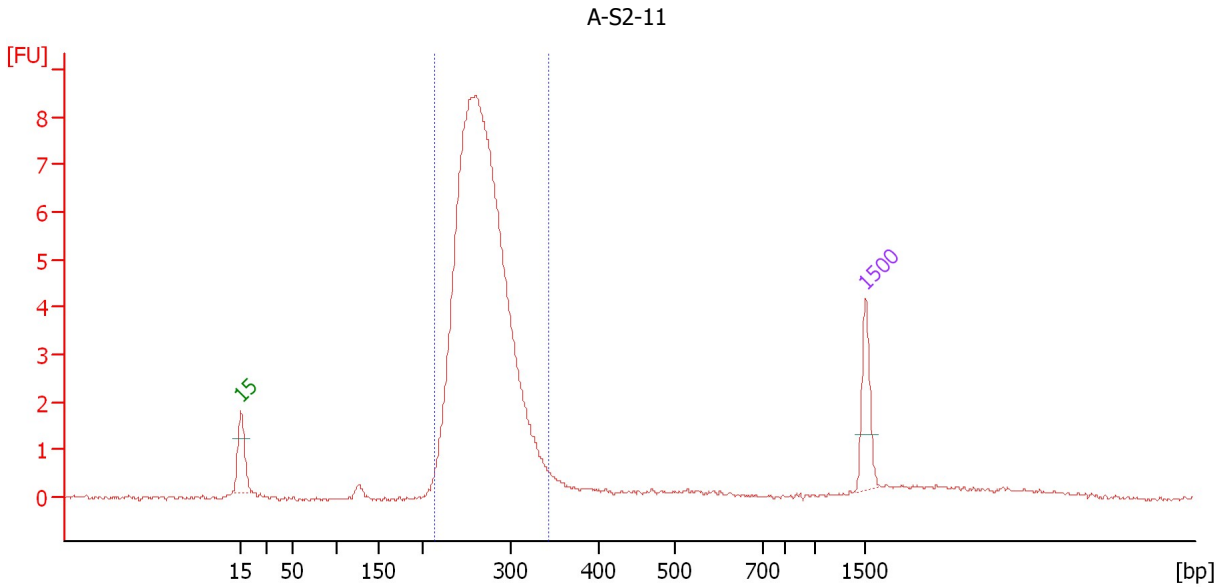
**Region table for sample 10 : A-S1-10**

From [bp]	To [bp]	Area	% of Total	Molarity [nmol/l]	Average Size [bp]	Size distribution in CV [%]	Conc. [ng/μl]	Co Name
212	331	46.2	89	263.3	266	9.0	46.00	Region 1

Assay Class: DNA 1000  
 Data Path: C:\...ents and Settings\Bioanalyzer\2012-12-19\2012-12-19\_003.xad

Created: 12/19/2012 12:02:56 PM  
 Modified: 12/19/2012 12:48:39 PM

**Electropherogram Summary Continued ...**



**Setpoint Deviations for sample 11 : A-S2-11**

Height Threshold [FU] : 1

**Overall Results for sample 11 : A-S2-11**

Number of peaks found: 0                      Area 1: 43.7

**Peak table for sample 11 : A-S2-11**

Peak	Size [bp]	Conc. [ng/μl]	Molarity [nmol/l]	Observations
1	15	4.20	424.2	Lower Marker
2	1,500	2.10	2.1	Upper Marker

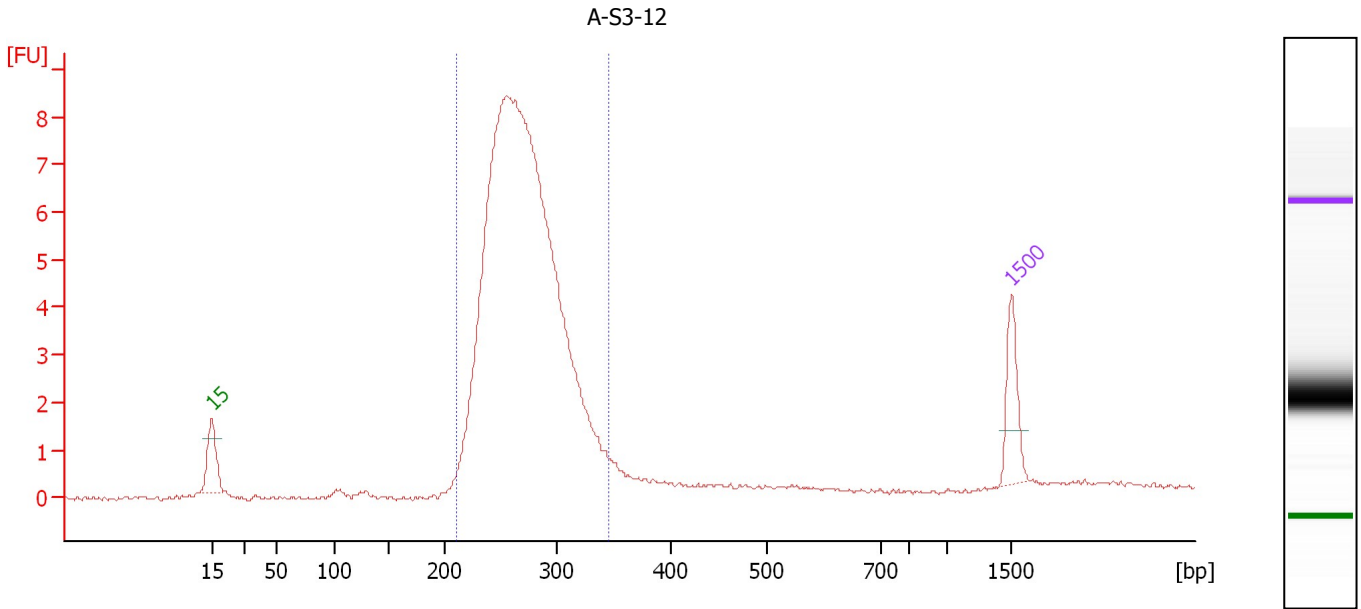
**Region table for sample 11 : A-S2-11**

From [bp]	To [bp]	Area	% of Total	Molarity [nmol/l]	Average Size [bp]	Size distribution in CV [%]	Conc. [ng/μl]	Co Name
215	343	43.7	88	262.1	269	9.7	46.26	Region 1

Assay Class: DNA 1000  
 Data Path: C:\...ents and Settings\Bioanalyzer\2012-12-19\2012-12-19\_003.xad

Created: 12/19/2012 12:02:56 PM  
 Modified: 12/19/2012 12:48:39 PM

**Electropherogram Summary Continued ...**



**Setpoint Deviations for sample 12 : A-S3-12**

Height Threshold [FU] : 1

**Overall Results for sample 12 : A-S3-12**

Number of peaks found: 0                      Area 1: 48.5

**Peak table for sample 12 : A-S3-12**

Peak	Size [bp]	Conc. [ng/μl]	Molarity [nmol/l]	Observations
1	15	4.20	424.2	Lower Marker
2	1,500	2.10	2.1	Upper Marker

**Region table for sample 12 : A-S3-12**

From [bp]	To [bp]	Area	% of Total	Molarity [nmol/l]	Average Size [bp]	Size distribution in CV [%]	Conc. [ng/μl]	Co Name
212	345	48.5	81	278.7	271	10.4	49.47	Region 1



Assay Class: DNA 1000  
Data Path: C:\...ents and Settings\Bioanalyzer\2012-12-19\2012-12-19\_003.xad

Created: 12/19/2012 12:02:56 PM  
Modified: 12/19/2012 12:48:39 PM

**Gel Image**

