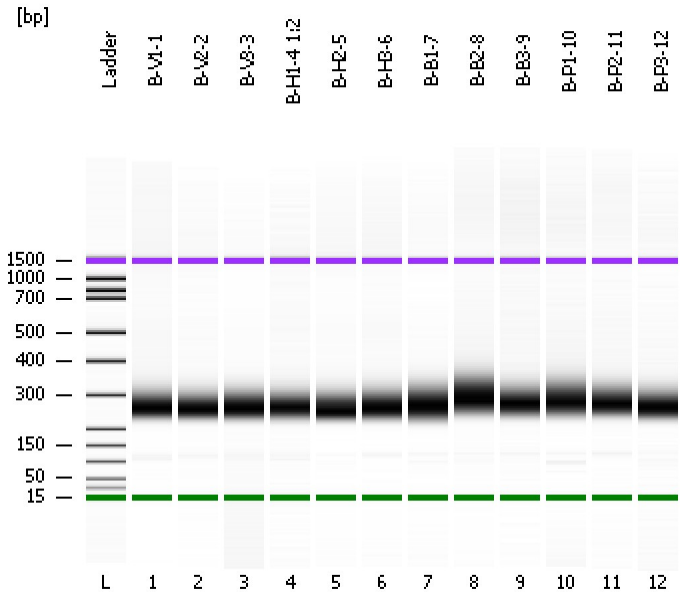


Assay Class: DNA 1000  
Data Path: C:\...ents and Settings\Bioanalyzer\2012-12-19\2012-12-19\_007.xad

Created: 12/19/2012 4:16:02 PM  
Modified: 12/19/2012 5:08:15 PM

**Electrophoresis File Run Summary**



Instrument Information:

Instrument Name: DE13701086      Firmware: C.01.069  
Serial#: DE13701086      Type: G2938B

Assay Information:

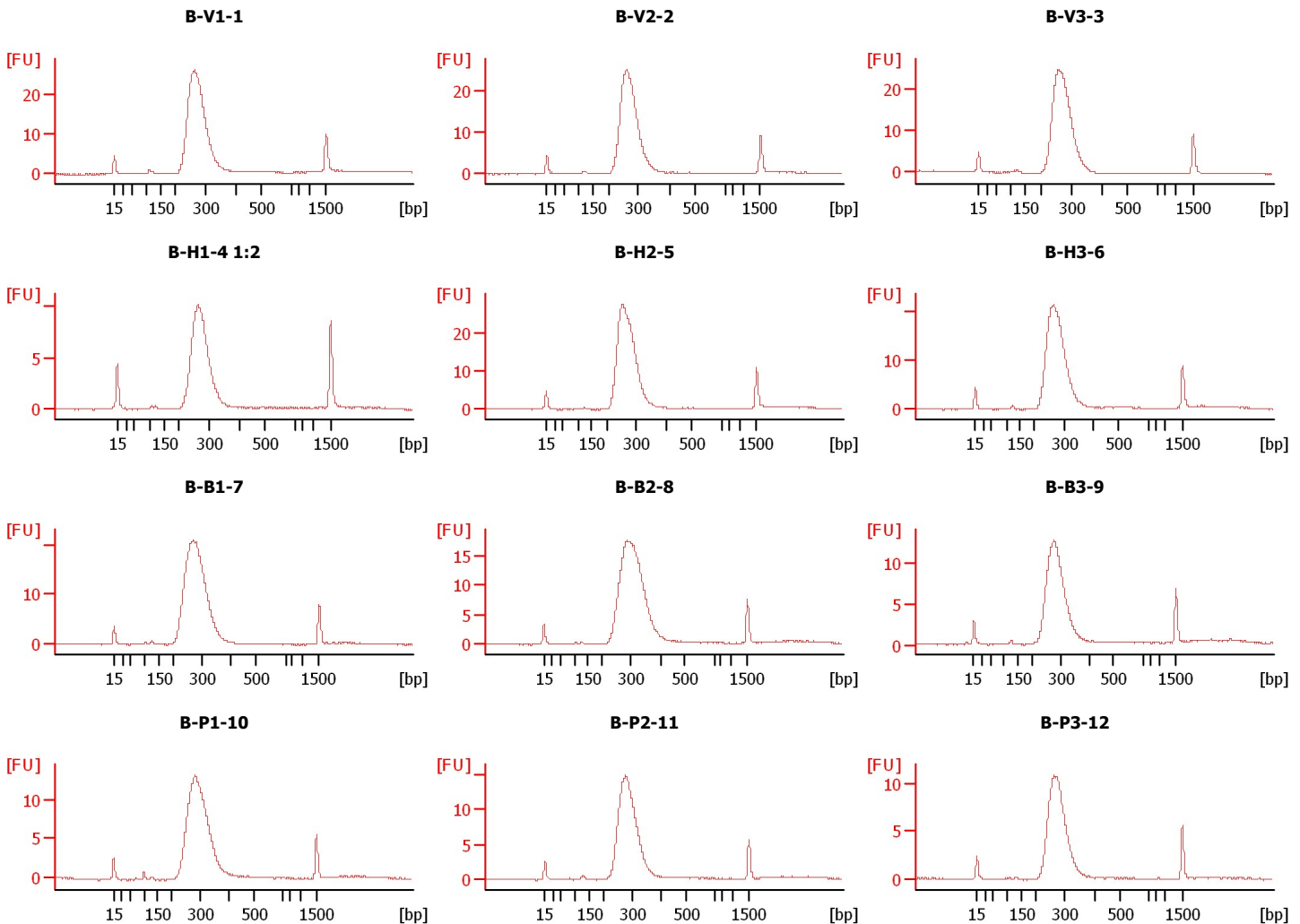
Assay Origin Path: C:\Program Files\Agilent\2100 bioanalyzer\2100 expert\assays\dsDNA\DNA 1000 Series II.xsy

Assay Class: DNA 1000  
Version: 2.3  
Assay Comments: DNA Analysis 25 -1000 bp

© Copyright 2003-2009 Agilent Technologies, Inc.

Chip Information:

Chip Lot #:      Reagent Kit Lot #:      Chip Comments:



Assay Class: DNA 1000  
 Data Path: C:\...ents and Settings\Bioanalyzer\2012-12-19\2012-12-19\_007.xad

Created: 12/19/2012 4:16:02 PM  
 Modified: 12/19/2012 5:08:15 PM

**Electrophoresis File Run Summary (Chip Summary)**

Sample Name	Sample Comment	Rest. Digest	Status	Observation	Result Label	Result Color
B-V1-1		<input type="checkbox"/>	✓			
B-V2-2		<input type="checkbox"/>	✓			
B-V3-3		<input type="checkbox"/>	✓			
B-H1-4 1:2		<input type="checkbox"/>	✓			
B-H2-5		<input type="checkbox"/>	✓			
B-H3-6		<input type="checkbox"/>	✓			
B-B1-7		<input type="checkbox"/>	✓			
B-B2-8		<input type="checkbox"/>	✓			
B-B3-9		<input type="checkbox"/>	✓			
B-P1-10		<input type="checkbox"/>	✓			
B-P2-11		<input type="checkbox"/>	✓			
B-P3-12		<input type="checkbox"/>	✓			
Ladder		<input type="checkbox"/>	✓			

**Chip Lot #**

**Reagent Kit Lot #**

**Chip Comments :**

Assay Class: DNA 1000  
Data Path: C:\...ents and Settings\Bioanalyzer\2012-12-19\2012-12-19\_007.xad

Created: 12/19/2012 4:16:02 PM  
Modified: 12/19/2012 5:08:15 PM

**Electrophoresis Assay Details**

**General Analysis Settings**

Number of Available Sample and Ladder Wells (Max.) : 13  
Minimum Visible Range [s] : 30  
Maximum Visible Range [s] : 129  
Start Analysis Time Range [s] : 30  
End Analysis Time Range [s] : 128.95  
Ladder Concentration [ng/μl] : 44  
Uses Standard Area for Ladder Fragments  
Lower Marker Concentration [ng/μl] : 4.2  
Upper Marker Concentration [ng/μl] : 2.1  
Used Upper Marker for Quantitation  
Standard Curve Fit is Point to Point  
Show Data Aligned to Lower and Upper Marker

**Integrator Settings**

Integration Start Time [s] : 30  
Integration End Time [s] : 128.95  
Slope Threshold : 0.5  
Height Threshold [FU] : 4  
Area Threshold : 0.1  
Width Threshold [s] : 0.5  
Baseline Plateau [s] : 0.5

**Filter Settings**

Filter Width [s] : 0.5  
Polynomial Order : 4

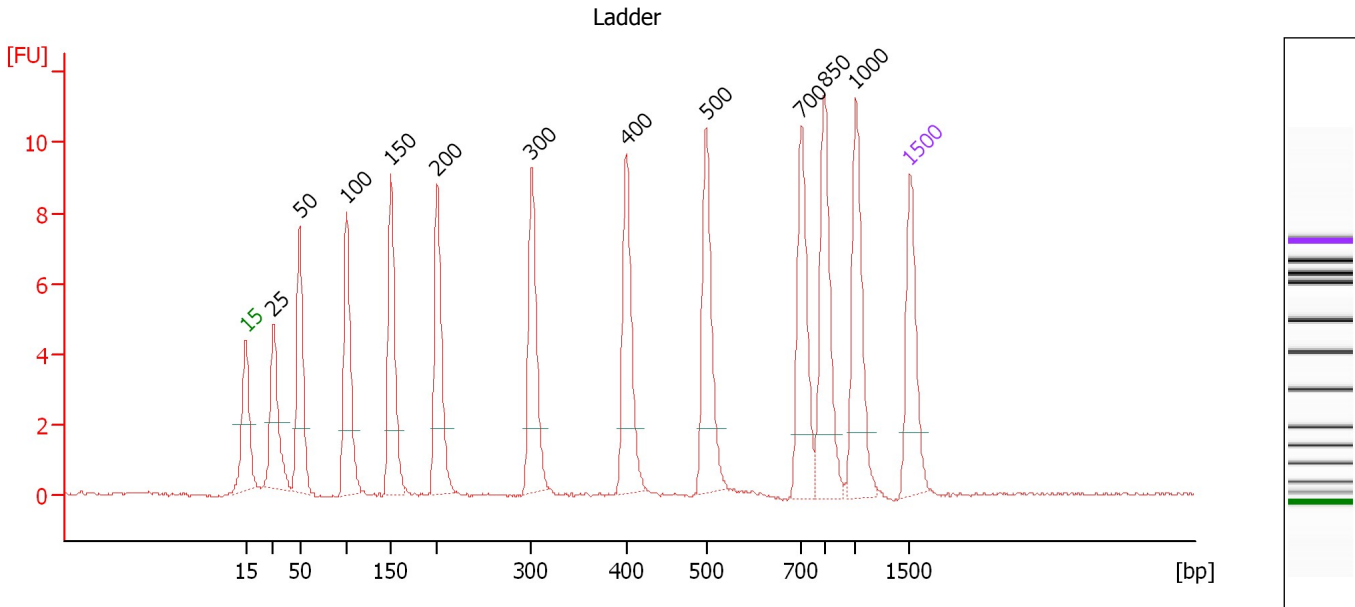
**Ladder**

Ladder Peak	Size	Area
1	15	25
2	25	26
3	50	34
4	100	41
5	150	45
6	200	52
7	300	63
8	400	76
9	500	83
10	700	88
11	850	86
12	1000	90
13	1500	52

Assay Class: DNA 1000  
 Data Path: C:\...ents and Settings\Bioanalyzer\2012-12-19\2012-12-19\_007.xad

Created: 12/19/2012 4:16:02 PM  
 Modified: 12/19/2012 5:08:15 PM

**Electropherogram Summary**



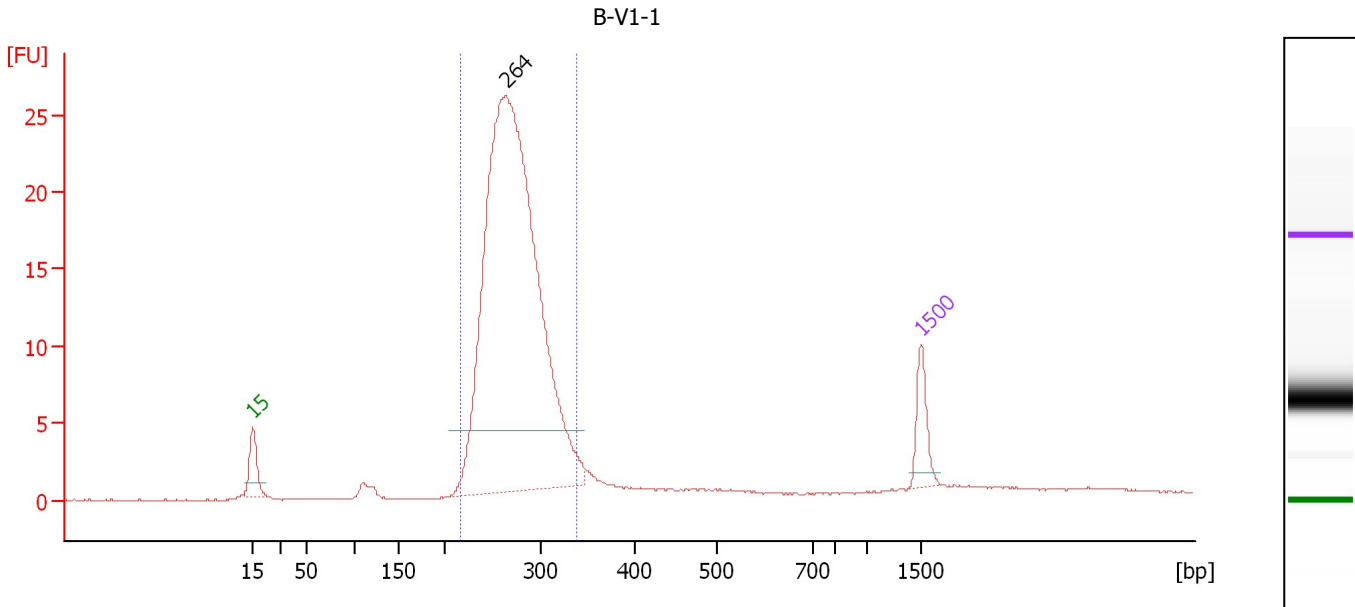
**Peak table for Ladder**

Peak	Size [bp]	Conc. [ng/μl]	Molarity [nmol/l]	Observations
1	15	4.20	424.2	Lower Marker
2	25	4.00	242.4	Ladder Peak
3	50	4.00	121.2	Ladder Peak
4	100	4.00	60.6	Ladder Peak
5	150	4.00	40.4	Ladder Peak
6	200	4.00	30.3	Ladder Peak
7	300	4.00	20.2	Ladder Peak
8	400	4.00	15.2	Ladder Peak
9	500	4.00	12.1	Ladder Peak
10	700	4.00	8.7	Ladder Peak
11	850	4.00	7.1	Ladder Peak
12	1,000	4.00	6.1	Ladder Peak
13	1,500	2.10	2.1	Upper Marker

Assay Class: DNA 1000  
 Data Path: C:\...ents and Settings\Bioanalyzer\2012-12-19\2012-12-19\_007.xad

Created: 12/19/2012 4:16:02 PM  
 Modified: 12/19/2012 5:08:15 PM

**Electropherogram Summary Continued ...**



**Overall Results for sample 1 : B-V1-1**

Number of peaks found: 1                      Area 1: 143.2

**Peak table for sample 1 : B-V1-1**

Peak	Size [bp]	Conc. [ng/μl]	Molarity [nmol/l]	Observations
1	15	4.20	424.2	Lower Marker
2	264	51.67	297.0	
3	1,500	2.10	2.1	Upper Marker

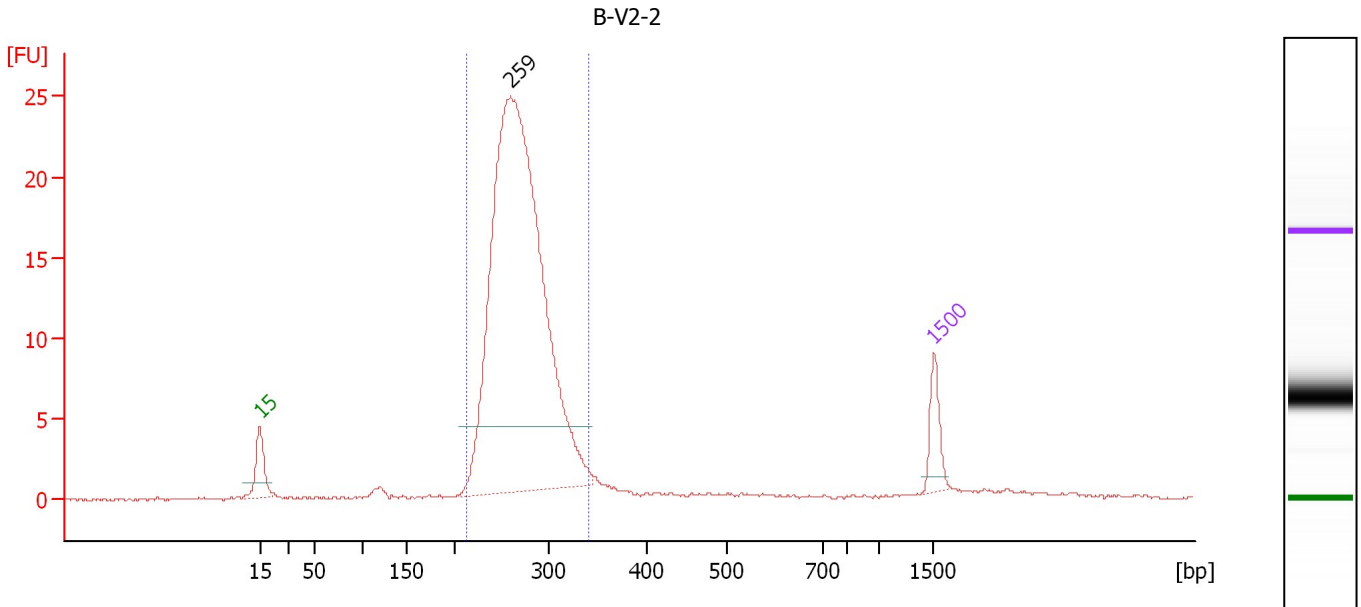
**Region table for sample 1 : B-V1-1**

From [bp]	To [bp]	Area	% of Total	Molarity [nmol/l]	Average Size [bp]	Size distribution in CV [%]	Conc. [ng/μl]	Co Name
215	338	143.2	87	290.1	272	9.3	51.80	Region 1

Assay Class: DNA 1000  
 Data Path: C:\...ents and Settings\Bioanalyzer\2012-12-19\2012-12-19\_007.xad

Created: 12/19/2012 4:16:02 PM  
 Modified: 12/19/2012 5:08:15 PM

**Electropherogram Summary Continued ...**



**Overall Results for sample 2 : B-V2-2**

Number of peaks found: 1                      Area 1: 133.7

**Peak table for sample 2 : B-V2-2**

Peak	Size [bp]	Conc. [ng/μl]	Molarity [nmol/l]	Observations
1	15	4.20	424.2	Lower Marker
2	259	55.96	327.4	
3	1,500	2.10	2.1	Upper Marker

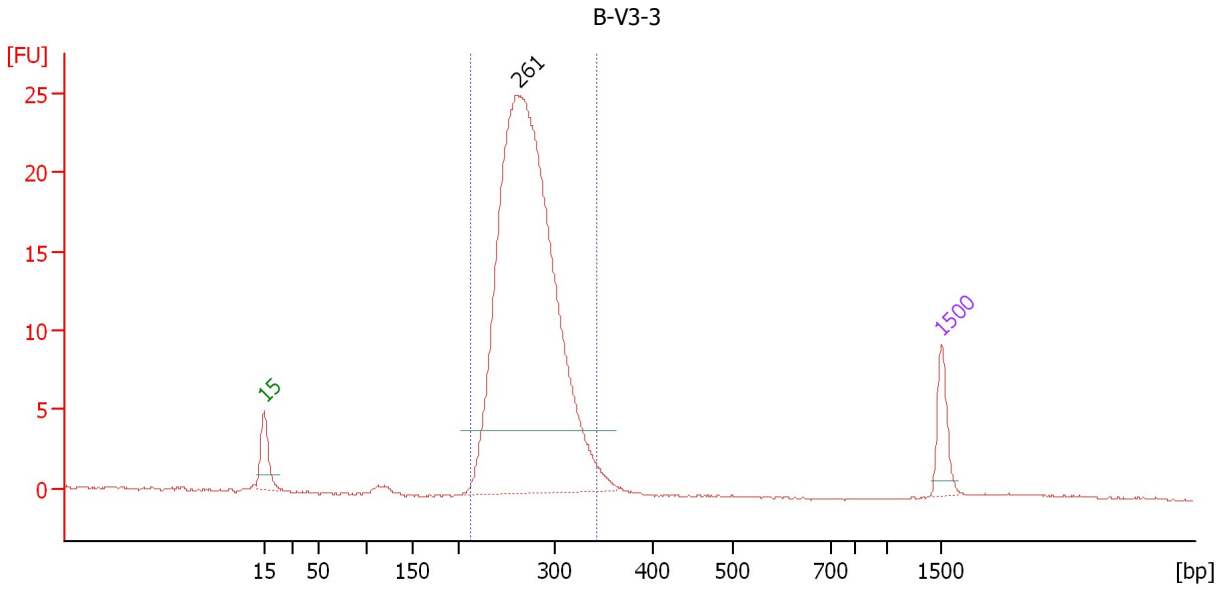
**Region table for sample 2 : B-V2-2**

From [bp]	To [bp]	Area	% of Total	Molarity [nmol/l]	Average Size [bp]	Size distribution in CV [%]	Conc. [ng/μl]	Co Name
214	341	133.7	91	321.4	269	9.4	56.87	Region 1

Assay Class: DNA 1000  
 Data Path: C:\...ents and Settings\Bioanalyzer\2012-12-19\2012-12-19\_007.xad

Created: 12/19/2012 4:16:02 PM  
 Modified: 12/19/2012 5:08:15 PM

**Electropherogram Summary Continued ...**



**Overall Results for sample 3 : B-V3-3**

Number of peaks found: 1                      Area 1: 146.1

**Peak table for sample 3 : B-V3-3**

Peak	Size [bp]	Conc. [ng/μl]	Molarity [nmol/l]	Observations
1	15	4.20	424.2	Lower Marker
2	261	55.27	321.1	
3	1,500	2.10	2.1	Upper Marker

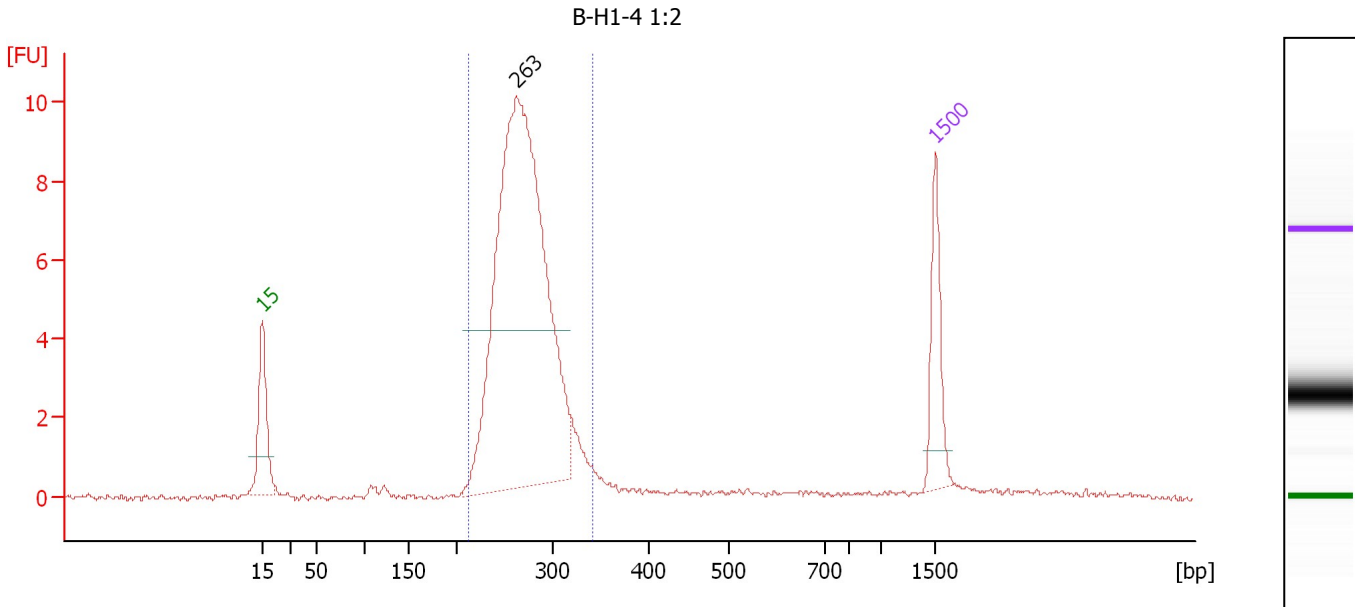
**Region table for sample 3 : B-V3-3**

From [bp]	To [bp]	Area	% of Total	Molarity [nmol/l]	Average Size [bp]	Size distribution in CV [%]	Conc. [ng/μl]	Co Name
213	343	146.1	95	299.6	272	9.6	53.44	Region 1

Assay Class: DNA 1000  
 Data Path: C:\...ents and Settings\Bioanalyzer\2012-12-19\2012-12-19\_007.xad

Created: 12/19/2012 4:16:02 PM  
 Modified: 12/19/2012 5:08:15 PM

**Electropherogram Summary Continued ...**



**Overall Results for sample 4 : B-H1-4 1:2**

Number of peaks found: 1 Area 1: 54.6

**Peak table for sample 4 : B-H1-4 1:2**

Peak	Size [bp]	Conc. [ng/μl]	Molarity [nmol/l]	Observations
1	15	4.20	424.2	Lower Marker
2	263	22.14	127.5	
3	1,500	2.10	2.1	Upper Marker

**Region table for sample 4 : B-H1-4 1:2**

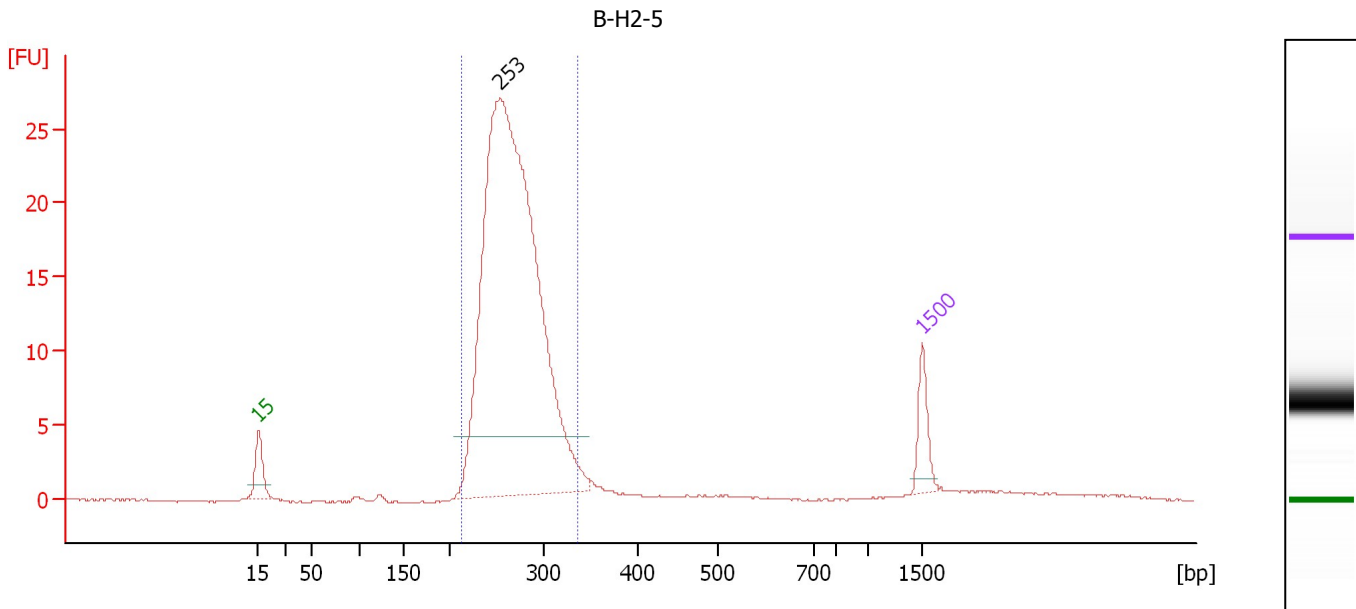
From [bp]	To [bp]	Area	% of Total	Molarity [nmol/l]	Average Size [bp]	Size distribution in CV [%]	Conc. [ng/μl]	Co Name
214	342	54.6	86	134.0	271	9.4	23.88	Region 1



Assay Class: DNA 1000  
 Data Path: C:\...ents and Settings\Bioanalyzer\2012-12-19\2012-12-19\_007.xad

Created: 12/19/2012 4:16:02 PM  
 Modified: 12/19/2012 5:08:15 PM

**Electropherogram Summary Continued ...**



**Overall Results for sample 5 : B-H2-5**

Number of peaks found: 1                      Area 1: 150.2

**Peak table for sample 5 : B-H2-5**

Peak	Size [bp]	Conc. [ng/μl]	Molarity [nmol/l]	Observations
1	15	4.20	424.2	Lower Marker
2	253	56.41	337.4	
3	1,500	2.10	2.1	Upper Marker

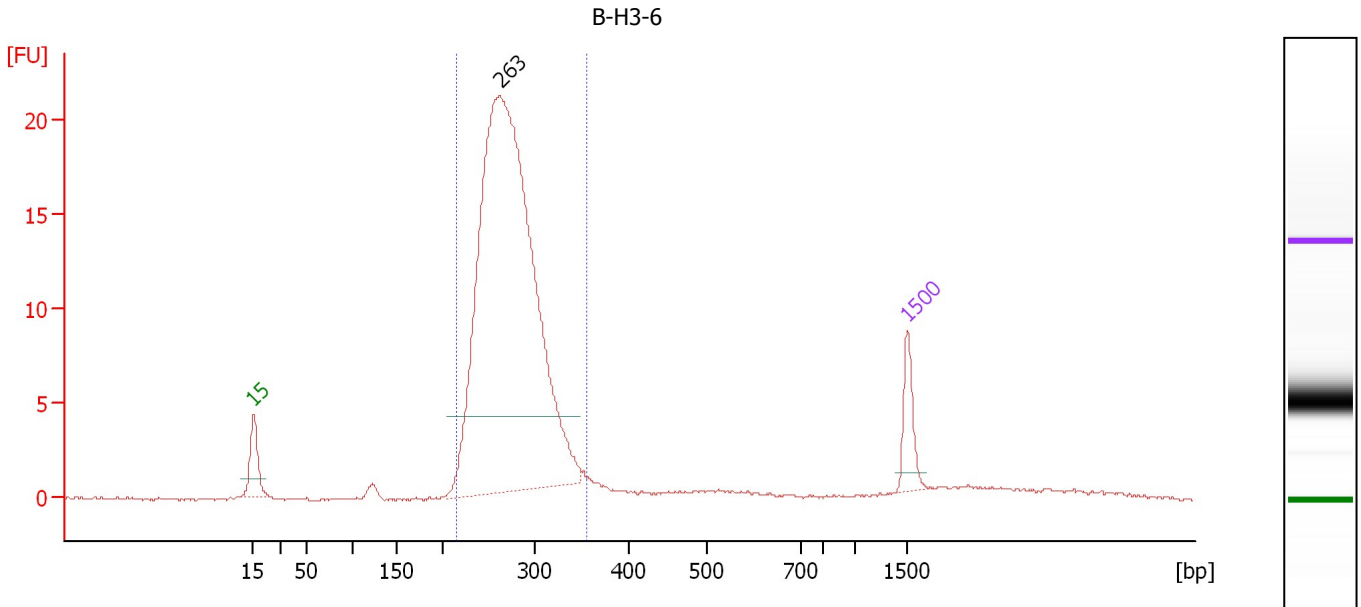
**Region table for sample 5 : B-H2-5**

From [bp]	To [bp]	Area	% of Total	Molarity [nmol/l]	Average Size [bp]	Size distribution in CV [%]	Conc. [ng/μl]	Co Name
212	336	150.2	89	315.8	267	9.6	55.47	Region 1

Assay Class: DNA 1000  
 Data Path: C:\...ents and Settings\Bioanalyzer\2012-12-19\2012-12-19\_007.xad

Created: 12/19/2012 4:16:02 PM  
 Modified: 12/19/2012 5:08:15 PM

**Electropherogram Summary Continued ...**



**Overall Results for sample 6 : B-H3-6**

Number of peaks found: 1                      Area 1: 124.7

**Peak table for sample 6 : B-H3-6**

Peak	Size [bp]	Conc. [ng/μl]	Molarity [nmol/l]	Observations
1	15	4.20	424.2	Lower Marker
2	263	52.08	300.4	
3	1,500	2.10	2.1	Upper Marker

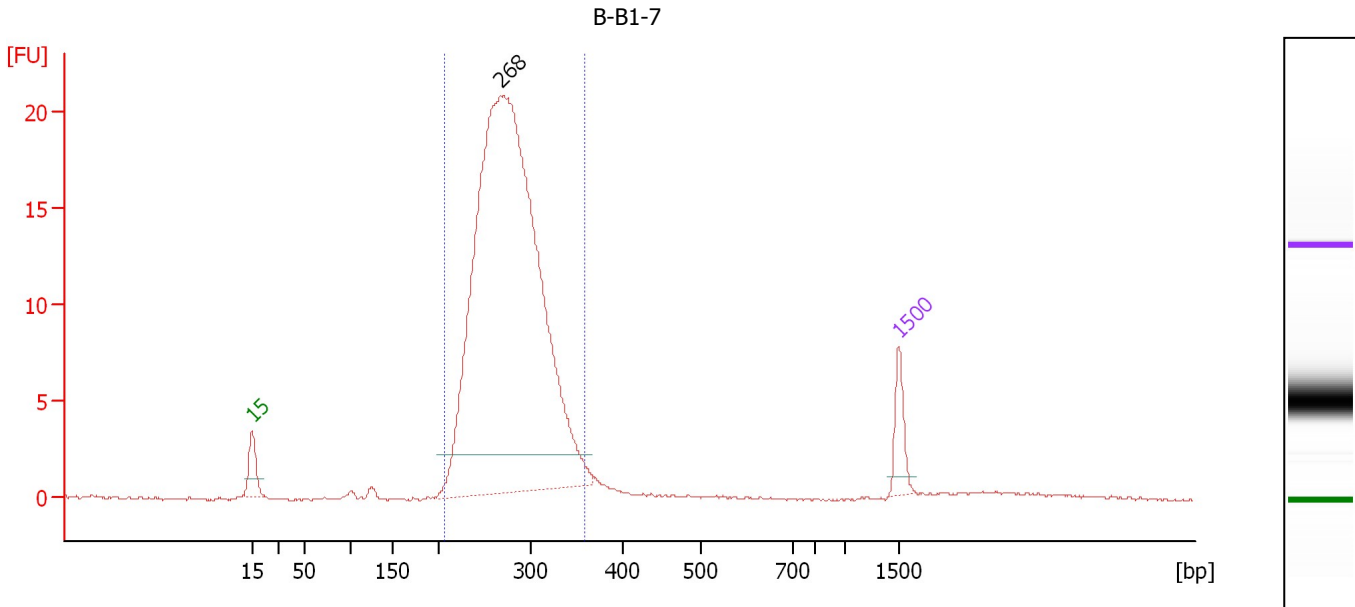
**Region table for sample 6 : B-H3-6**

From [bp]	To [bp]	Area	% of Total	Molarity [nmol/l]	Average Size [bp]	Size distribution in CV [%]	Conc. [ng/μl]	Co Name
215	355	124.7	85	297.3	274	10.2	53.28	Region 1

Assay Class: DNA 1000  
 Data Path: C:\...ents and Settings\Bioanalyzer\2012-12-19\2012-12-19\_007.xad

Created: 12/19/2012 4:16:02 PM  
 Modified: 12/19/2012 5:08:15 PM

**Electropherogram Summary Continued ...**



**Setpoint Deviations for sample 7 : B-B1-7**

Height Threshold [FU] : 2

**Overall Results for sample 7 : B-B1-7**

Number of peaks found: 1                      Area 1: 141.1

**Peak table for sample 7 : B-B1-7**

Peak	Size [bp]	Conc. [ng/μl]	Molarity [nmol/l]	Observations
1	15	4.20	424.2	Lower Marker
2	268	68.96	390.1	
3	1,500	2.10	2.1	Upper Marker

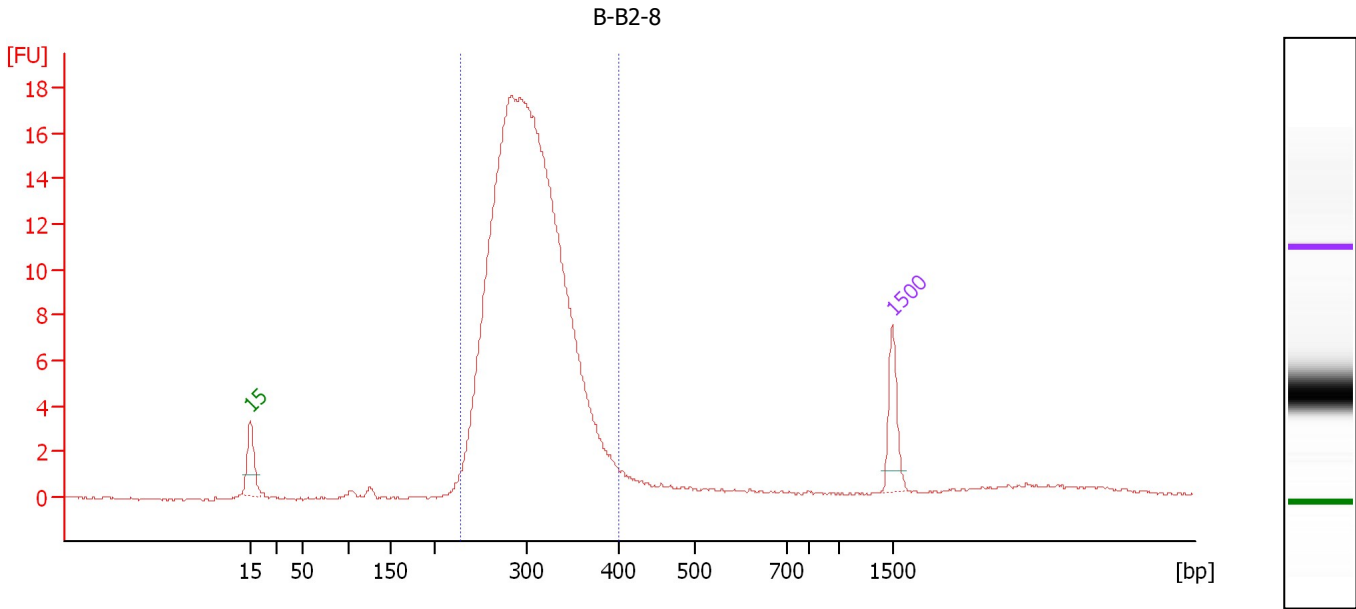
**Region table for sample 7 : B-B1-7**

From [bp]	To [bp]	Area	% of Total	Molarity [nmol/l]	Average Size [bp]	Size distribution in CV [%]	Conc. [ng/μl]	Co Name
207	360	141.1	93	383.4	278	11.3	69.56	Region 1

Assay Class: DNA 1000  
 Data Path: C:\...ents and Settings\Bioanalyzer\2012-12-19\2012-12-19\_007.xad

Created: 12/19/2012 4:16:02 PM  
 Modified: 12/19/2012 5:08:15 PM

**Electropherogram Summary Continued ...**



**Setpoint Deviations for sample 8 : B-B2-8**

Height Threshold [FU] : 2

**Overall Results for sample 8 : B-B2-8**

Number of peaks found: 0 Area 1: 132.5

**Peak table for sample 8 : B-B2-8**

Peak	Size [bp]	Conc. [ng/μl]	Molarity [nmol/l]	Observations
1	15	4.20	424.2	Lower Marker
2	1,500	2.10	2.1	Upper Marker

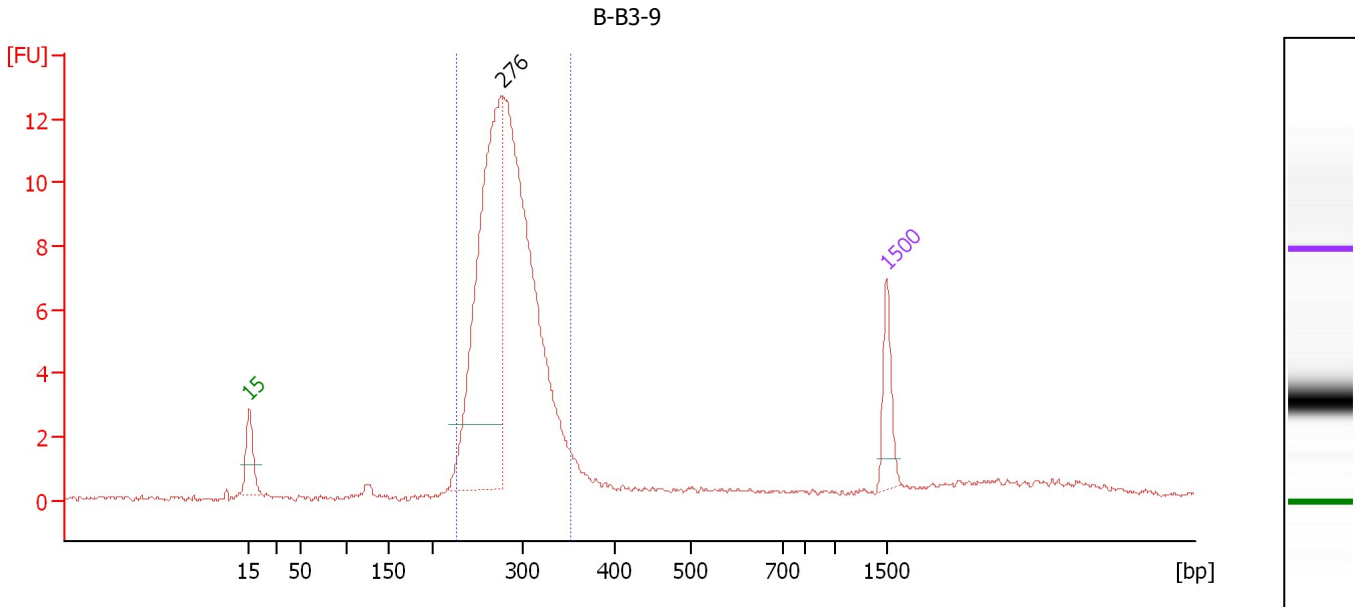
**Region table for sample 8 : B-B2-8**

From [bp]	To [bp]	Area	% of Total	Molarity [nmol/l]	Average Size [bp]	Size distribution in CV [%]	Conc. [ng/μl]	Co Name
227	402	132.5	92	344.8	303	11.6	68.03	Region 1

Assay Class: DNA 1000  
 Data Path: C:\...ents and Settings\Bioanalyzer\2012-12-19\2012-12-19\_007.xad

Created: 12/19/2012 4:16:02 PM  
 Modified: 12/19/2012 5:08:15 PM

**Electropherogram Summary Continued ...**



**Setpoint Deviations for sample 9 : B-B3-9**

Height Threshold [FU] : 2

**Overall Results for sample 9 : B-B3-9**

Number of peaks found: 1                      Area 1: 70.5

**Peak table for sample 9 : B-B3-9**

Peak	Size [bp]	Conc. [ng/μl]	Molarity [nmol/l]	Observations
1	15	4.20	424.2	Lower Marker
2	276	19.12	104.9	
3	1,500	2.10	2.1	Upper Marker

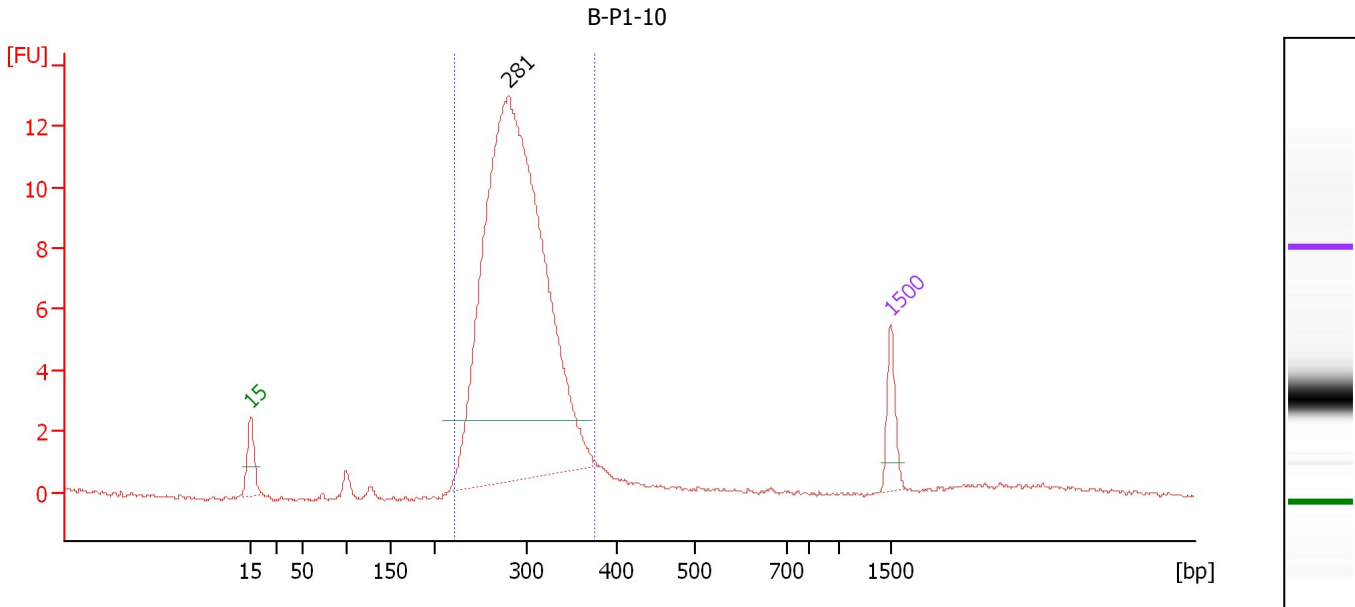
**Region table for sample 9 : B-B3-9**

From [bp]	To [bp]	Area	% of Total	Molarity [nmol/l]	Average Size [bp]	Size distribution in CV [%]	Conc. [ng/μl]	Co Name
225	352	70.5	83	232.0	283	9.6	43.00	Region 1

Assay Class: DNA 1000  
 Data Path: C:\...ents and Settings\Bioanalyzer\2012-12-19\2012-12-19\_007.xad

Created: 12/19/2012 4:16:02 PM  
 Modified: 12/19/2012 5:08:15 PM

**Electropherogram Summary Continued ...**



**Setpoint Deviations for sample 10 : B-P1-10**

Height Threshold [FU] : 2

**Overall Results for sample 10 : B-P1-10**

Number of peaks found: 1                      Area 1: 84.5

**Peak table for sample 10 : B-P1-10**

Peak	Size [bp]	Conc. [ng/μl]	Molarity [nmol/l]	Observations
1	15	4.20	424.2	Lower Marker
2	281	57.69	310.9	
3	1,500	2.10	2.1	Upper Marker

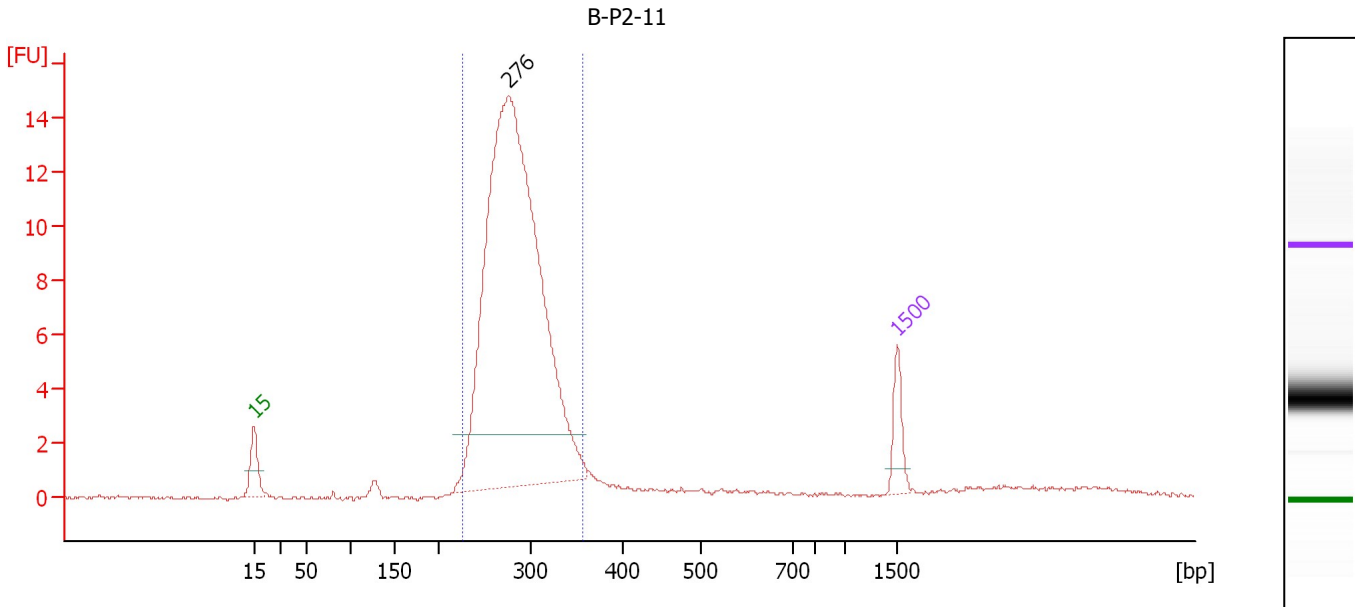
**Region table for sample 10 : B-P1-10**

From [bp]	To [bp]	Area	% of Total	Molarity [nmol/l]	Average Size [bp]	Size distribution in CV [%]	Conc. [ng/μl]	Co Name
222	376	84.5	88	319.9	292	10.9	60.85	Region 1

Assay Class: DNA 1000  
 Data Path: C:\...ents and Settings\Bioanalyzer\2012-12-19\2012-12-19\_007.xad

Created: 12/19/2012 4:16:02 PM  
 Modified: 12/19/2012 5:08:15 PM

**Electropherogram Summary Continued ...**



**Setpoint Deviations for sample 11 : B-P2-11**

Height Threshold [FU] : 2

**Overall Results for sample 11 : B-P2-11**

Number of peaks found: 1                      Area 1: 83.6

**Peak table for sample 11 : B-P2-11**

Peak	Size [bp]	Conc. [ng/μl]	Molarity [nmol/l]	Observations
1	15	4.20	424.2	Lower Marker
2	276	57.67	316.7	
3	1,500	2.10	2.1	Upper Marker

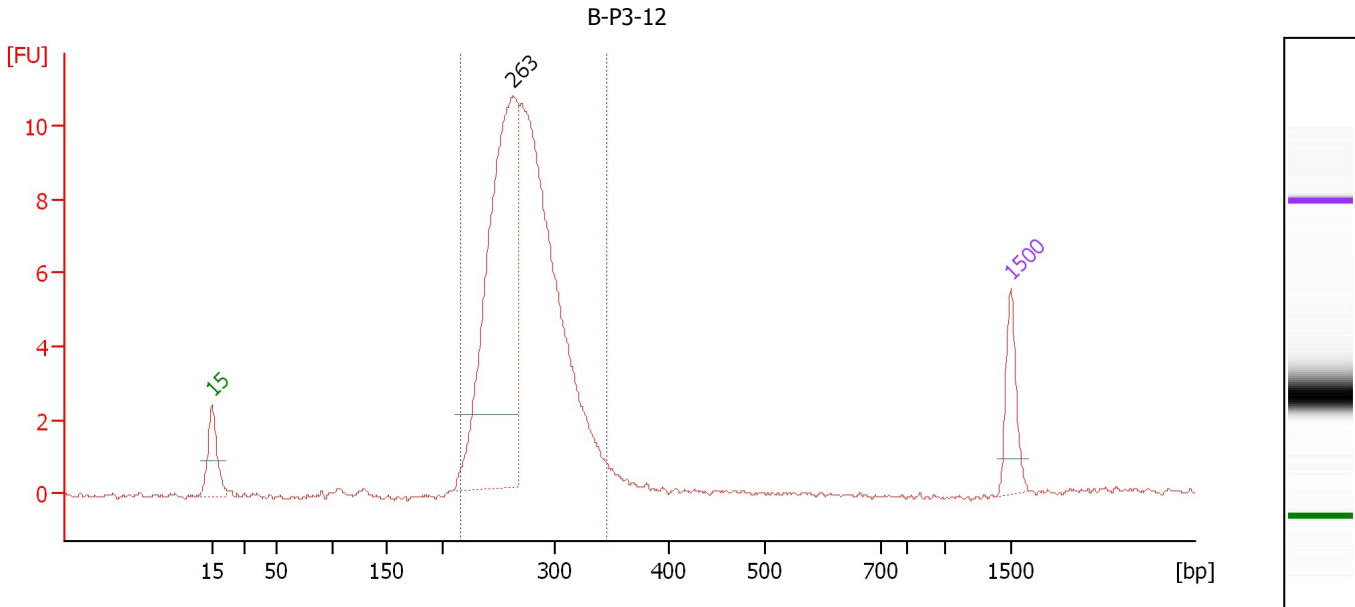
**Region table for sample 11 : B-P2-11**

From [bp]	To [bp]	Area	% of Total	Molarity [nmol/l]	Average Size [bp]	Size distribution in CV [%]	Conc. [ng/μl]	Co Name
225	358	83.6	87	319.0	284	9.7	59.33	Region 1

Assay Class: DNA 1000  
 Data Path: C:\...ents and Settings\Bioanalyzer\2012-12-19\2012-12-19\_007.xad

Created: 12/19/2012 4:16:02 PM  
 Modified: 12/19/2012 5:08:15 PM

**Electropherogram Summary Continued ...**



**Setpoint Deviations for sample 12 : B-P3-12**

Height Threshold [FU] : 2

**Overall Results for sample 12 : B-P3-12**

Number of peaks found: 1                      Area 1: 60.0

**Peak table for sample 12 : B-P3-12**

Peak	Size [bp]	Conc. [ng/μl]	Molarity [nmol/l]	Observations
1	15	4.20	424.2	Lower Marker
2	263	18.98	109.5	
3	1,500	2.10	2.1	Upper Marker

**Region table for sample 12 : B-P3-12**

From [bp]	To [bp]	Area	% of Total	Molarity [nmol/l]	Average Size [bp]	Size distribution in CV [%]	Conc. [ng/μl]	Co Name
217	346	60.0	91	241.8	274	9.7	43.37	Region 1



Assay Class: DNA 1000  
Data Path: C:\...ents and Settings\Bioanalyzer\2012-12-19\2012-12-19\_007.xad

Created: 12/19/2012 4:16:02 PM  
Modified: 12/19/2012 5:08:15 PM

**Gel Image**

