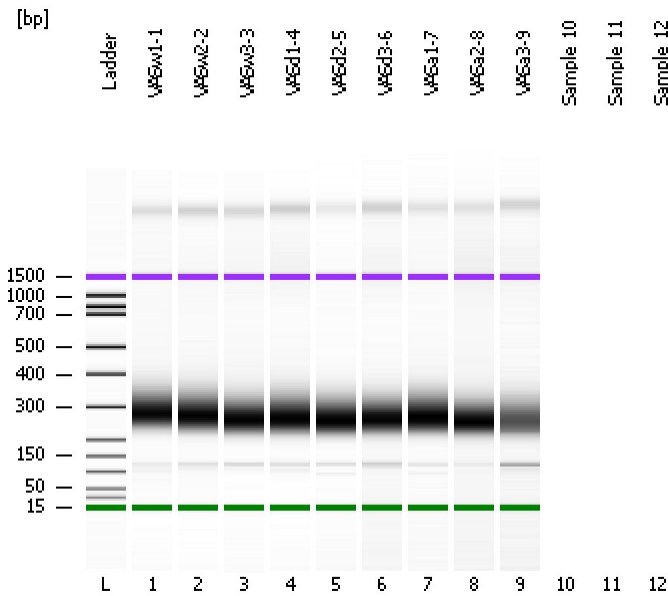


Assay Class: DNA 1000
Data Path: C:\...ents and Settings\Bioanalyzer\2012-12-20\2012-12-20_002.xad

Created: 12/20/2012 3:13:49 PM
Modified: 12/20/2012 3:55:00 PM

Electrophoresis File Run Summary



Instrument Information:

Instrument Name: DE13701086 Firmware: C.01.069
Serial#: DE13701086 Type: G2938B

Assay Information:

Assay Origin Path: C:\Program Files\Agilent\2100 bioanalyzer\2100 expert\assays\dsDNA\DNA 1000 Series II.xsy

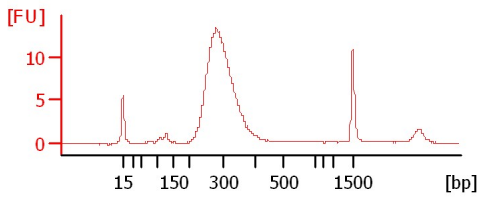
Assay Class: DNA 1000
Version: 2.3
Assay Comments: DNA Analysis 25 -1000 bp

© Copyright 2003-2009 Agilent Technologies, Inc.

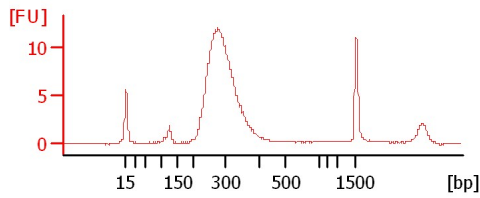
Chip Information:

Chip Lot #: Reagent Kit Lot #: Chip Comments:

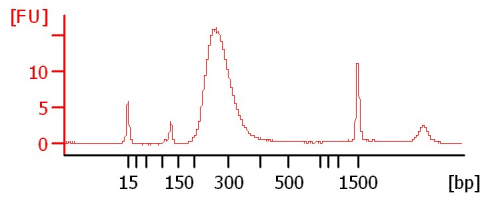
VASw1-1



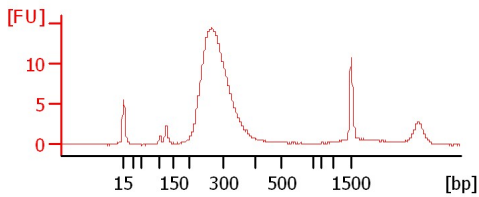
VASw2-2



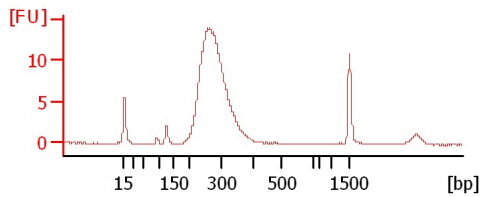
VASw3-3



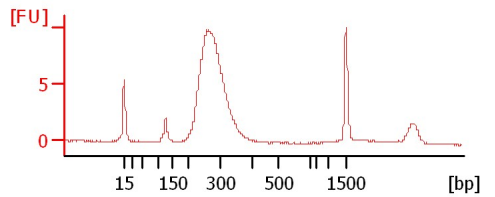
VASd1-4



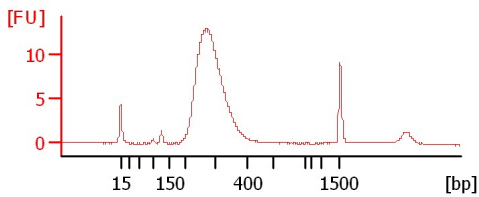
VASd2-5



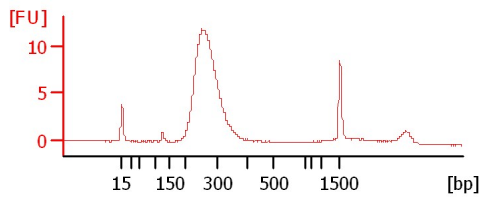
VASd3-6



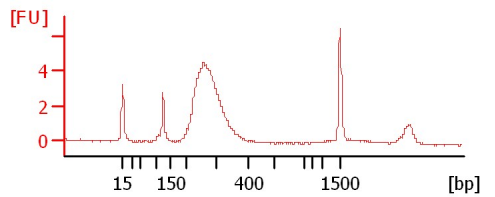
VASa1-7



VASa2-8



VASa3-9



Assay Class: DNA 1000
 Data Path: C:\...ents and Settings\Bioanalyzer\2012-12-20\2012-12-20_002.xad

Created: 12/20/2012 3:13:49 PM
 Modified: 12/20/2012 3:55:00 PM

Electrophoresis File Run Summary (Chip Summary)

Sample Name	Sample Comment	Rest. Digest	Status	Observation	Result Label	Result Color
VASw1-1		<input type="checkbox"/>	✓			
VASw2-2		<input type="checkbox"/>	✓			
VASw3-3		<input type="checkbox"/>	✓			
VASd1-4		<input type="checkbox"/>	✓			
VASd2-5		<input type="checkbox"/>	✓			
VASd3-6		<input type="checkbox"/>	✓			
VASa1-7		<input type="checkbox"/>	✓			
VASa2-8		<input type="checkbox"/>	✓			
VASa3-9		<input type="checkbox"/>	✓			
Sample 10		<input type="checkbox"/>				
Sample 11		<input type="checkbox"/>				
Sample 12		<input type="checkbox"/>				
Ladder		<input type="checkbox"/>	✓			

Chip Lot #

Reagent Kit Lot #

Chip Comments :

Assay Class: DNA 1000
Data Path: C:\...ents and Settings\Bioanalyzer\2012-12-20\2012-12-20_002.xad

Created: 12/20/2012 3:13:49 PM
Modified: 12/20/2012 3:55:00 PM

Electrophoresis Assay Details

General Analysis Settings

Number of Available Sample and Ladder Wells (Max.) : 13
Minimum Visible Range [s] : 30
Maximum Visible Range [s] : 129
Start Analysis Time Range [s] : 30
End Analysis Time Range [s] : 128.95
Ladder Concentration [ng/μl] : 44
Uses Standard Area for Ladder Fragments
Lower Marker Concentration [ng/μl] : 4.2
Upper Marker Concentration [ng/μl] : 2.1
Used Upper Marker for Quantitation
Standard Curve Fit is Point to Point
Show Data Aligned to Lower and Upper Marker

Integrator Settings

Integration Start Time [s] : 30
Integration End Time [s] : 128.95
Slope Threshold : 0.5
Height Threshold [FU] : 1
Area Threshold : 0.1
Width Threshold [s] : 0.5
Baseline Plateau [s] : 0.5

Filter Settings

Filter Width [s] : 0.5
Polynomial Order : 4

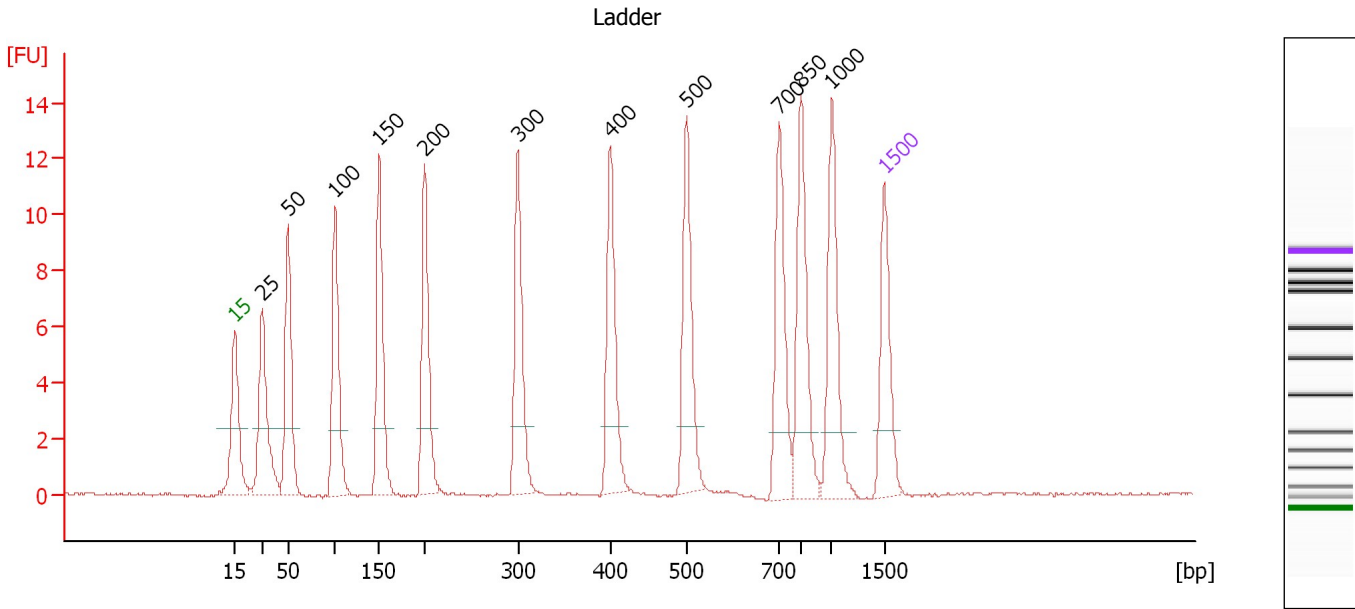
Ladder

Ladder Peak	Size	Area
1	15	25
2	25	26
3	50	34
4	100	41
5	150	45
6	200	52
7	300	63
8	400	76
9	500	83
10	700	88
11	850	86
12	1000	90
13	1500	52

Assay Class: DNA 1000
 Data Path: C:\...ents and Settings\Bioanalyzer\2012-12-20\2012-12-20_002.xad

Created: 12/20/2012 3:13:49 PM
 Modified: 12/20/2012 3:55:00 PM

Electropherogram Summary



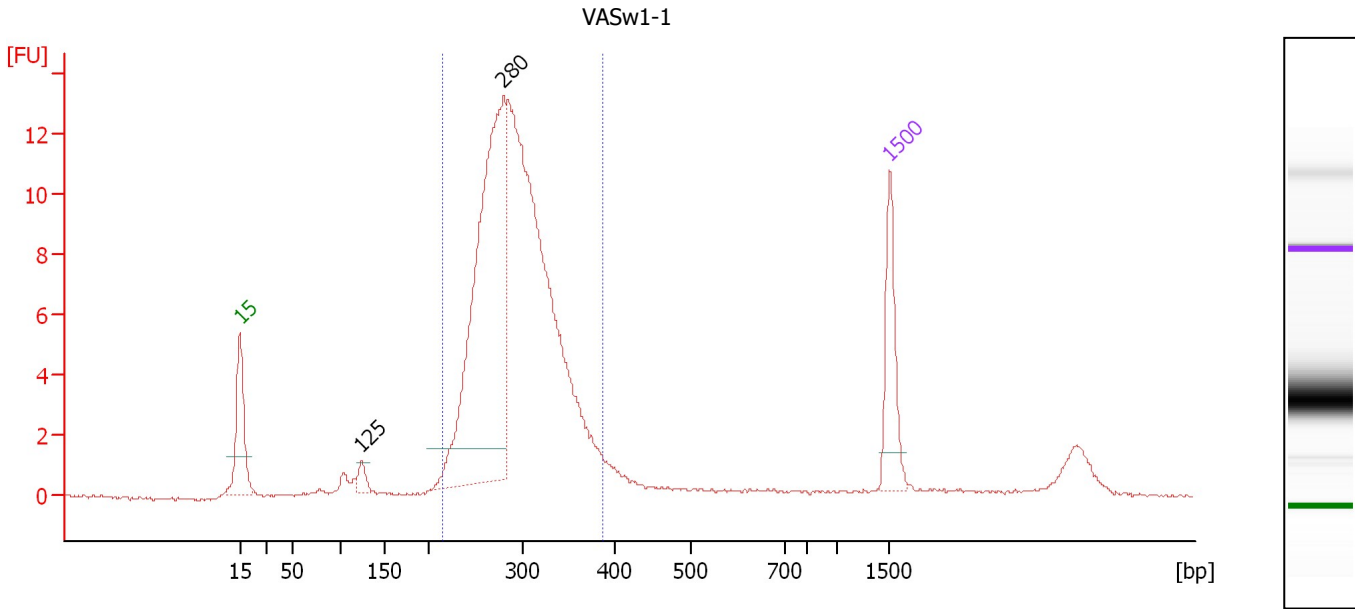
Peak table for Ladder

Peak	Size [bp]	Conc. [ng/μl]	Molarity [nmol/l]	Observations
1	15	4.20	424.2	Lower Marker
2	25	4.00	242.4	Ladder Peak
3	50	4.00	121.2	Ladder Peak
4	100	4.00	60.6	Ladder Peak
5	150	4.00	40.4	Ladder Peak
6	200	4.00	30.3	Ladder Peak
7	300	4.00	20.2	Ladder Peak
8	400	4.00	15.2	Ladder Peak
9	500	4.00	12.1	Ladder Peak
10	700	4.00	8.7	Ladder Peak
11	850	4.00	7.1	Ladder Peak
12	1,000	4.00	6.1	Ladder Peak
13	1,500	2.10	2.1	Upper Marker

Assay Class: DNA 1000
 Data Path: C:\...ents and Settings\Bioanalyzer\2012-12-20\2012-12-20_002.xad

Created: 12/20/2012 3:13:49 PM
 Modified: 12/20/2012 3:55:00 PM

Electropherogram Summary Continued ...



Overall Results for sample 1 : VASw1-1

Number of peaks found: 2 Area 1: 95.8

Peak table for sample 1 : VASw1-1

Peak	Size [bp]	Conc. [ng/μl]	Molarity [nmol/l]	Observations
1	15	4.20	424.2	Lower Marker
2	125	0.37	4.5	
3	280	12.59	68.2	
4	1,500	2.10	2.1	Upper Marker

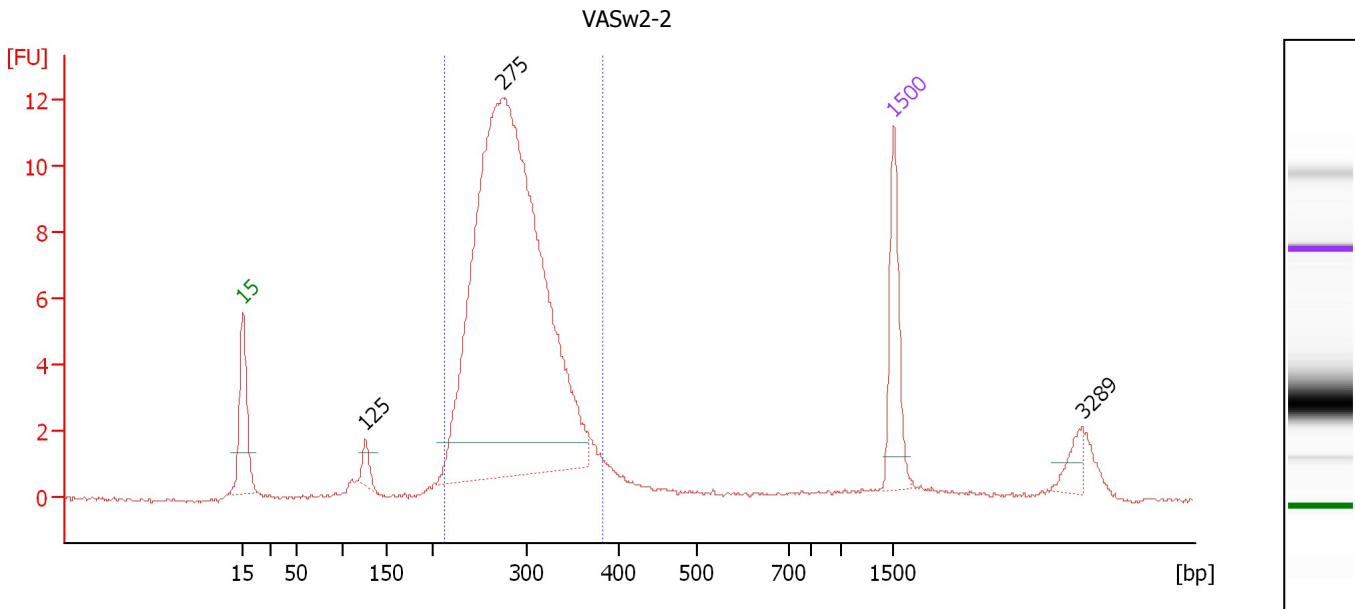
Region table for sample 1 : VASw1-1

From [bp]	To [bp]	Area	% of Total	Molarity [nmol/l]	Average Size [bp]	Size distribution in CV [%]	Conc. [ng/μl]	Co Name
214	388	95.8	85	163.9	293	12.2	31.26	Region 1

Assay Class: DNA 1000
 Data Path: C:\...ents and Settings\Bioanalyzer\2012-12-20\2012-12-20_002.xad

Created: 12/20/2012 3:13:49 PM
 Modified: 12/20/2012 3:55:00 PM

Electropherogram Summary Continued ...



Overall Results for sample 2 : VASw2-2

Number of peaks found: 2 Area 1: 90.8

Peak table for sample 2 : VASw2-2

Peak	Size [bp]	Conc. [ng/μl]	Molarity [nmol/l]	Observations
1	15	4.20	424.2	Lower Marker
2	125	0.46	5.6	
3	275	26.35	145.3	
4	1,500	2.10	2.1	Upper Marker
5	3,289	0.00	0.0	

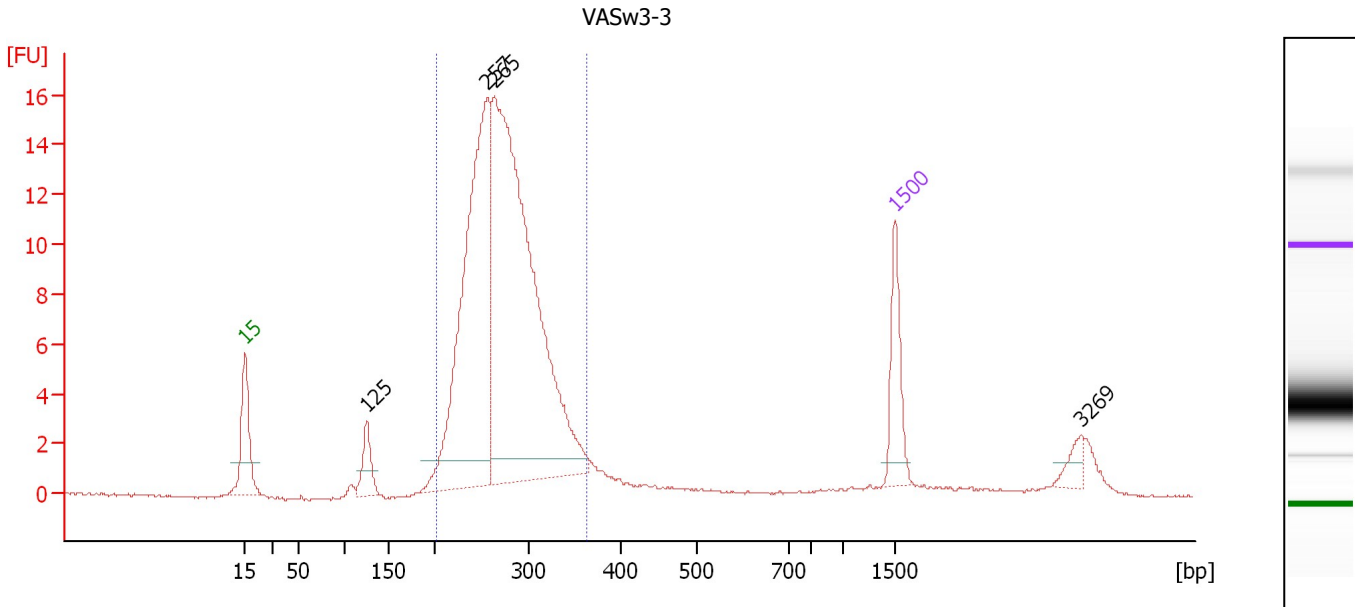
Region table for sample 2 : VASw2-2

From [bp]	To [bp]	Area	% of Total	Molarity [nmol/l]	Average Size [bp]	Size distribution in CV [%]	Conc. [ng/μl]	Co Name
212	382	90.8	82	157.5	286	12.7	29.32	Region 1

Assay Class: DNA 1000
 Data Path: C:\...ents and Settings\Bioanalyzer\2012-12-20\2012-12-20_002.xad

Created: 12/20/2012 3:13:49 PM
 Modified: 12/20/2012 3:55:00 PM

Electropherogram Summary Continued ...



Overall Results for sample 3 : VASw3-3

Number of peaks found: 3 Area 1: 111.5

Peak table for sample 3 : VASw3-3

Peak	Size [bp]	Conc. [ng/μl]	Molarity [nmol/l]	Observations
1	15	4.20	424.2	Lower Marker
2	125	1.19	14.5	
3	257	14.20	83.9	
4	265	21.99	125.9	
5	1,500	2.10	2.1	Upper Marker
6	3,269	0.00	0.0	

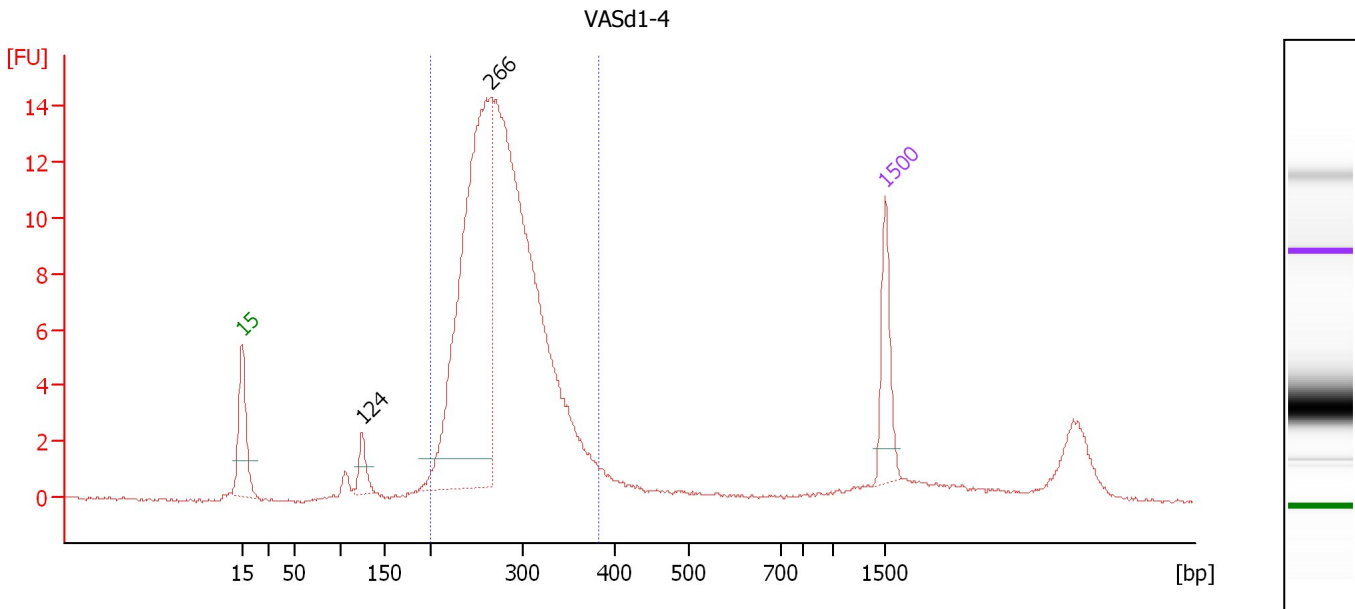
Region table for sample 3 : VASw3-3

From [bp]	To [bp]	Area	% of Total	Molarity [nmol/l]	Average Size [bp]	Size distribution in CV [%]	Conc. [ng/μl]	Co Name
202	364	111.5	84	211.5	274	12.3	37.82	Region 1

Assay Class: DNA 1000
 Data Path: C:\...ents and Settings\Bioanalyzer\2012-12-20\2012-12-20_002.xad

Created: 12/20/2012 3:13:49 PM
 Modified: 12/20/2012 3:55:00 PM

Electropherogram Summary Continued ...



Overall Results for sample 4 : VASd1-4

Number of peaks found: 2 Area 1: 108.5

Peak table for sample 4 : VASd1-4

Peak	Size [bp]	Conc. [ng/μl]	Molarity [nmol/l]	Observations
1	15	4.20	424.2	Lower Marker
2	124	0.84	10.3	
3	266	17.01	97.1	
4	1,500	2.10	2.1	Upper Marker

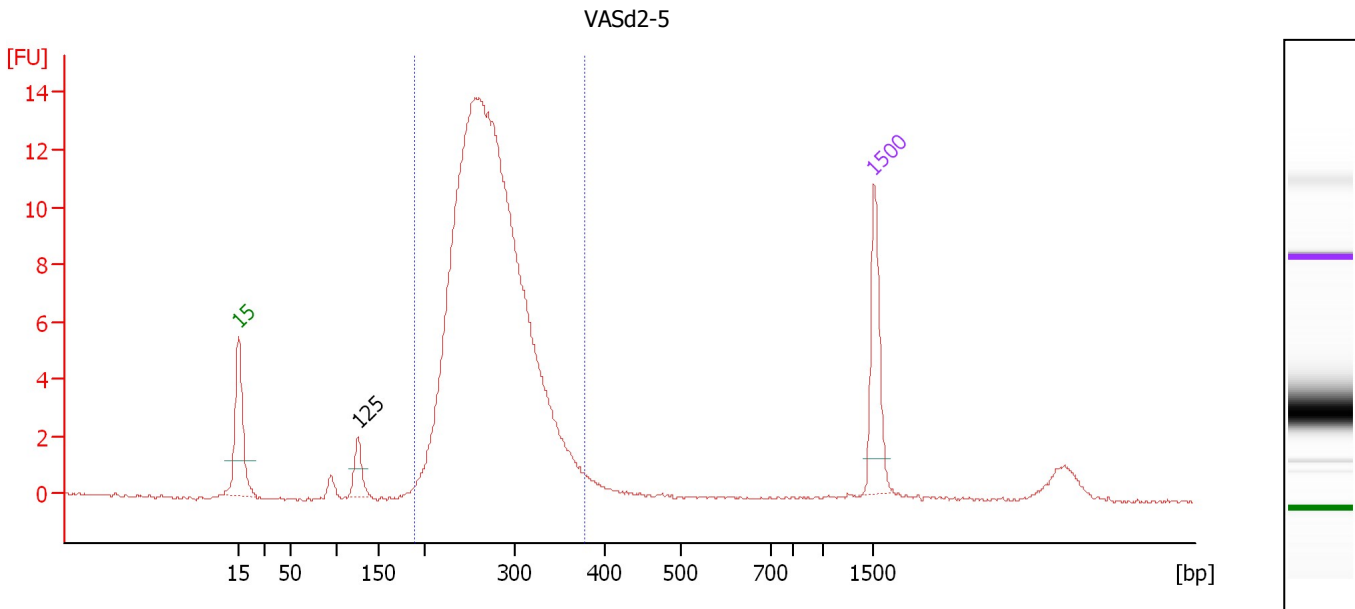
Region table for sample 4 : VASd1-4

From [bp]	To [bp]	Area	% of Total	Molarity [nmol/l]	Average Size [bp]	Size distribution in CV [%]	Conc. [ng/μl]	Co Name
200	384	108.5	80	223.2	280	13.4	40.59	Region 1

Assay Class: DNA 1000
 Data Path: C:\...ents and Settings\Bioanalyzer\2012-12-20\2012-12-20_002.xad

Created: 12/20/2012 3:13:49 PM
 Modified: 12/20/2012 3:55:00 PM

Electropherogram Summary Continued ...



Overall Results for sample 5 : VASd2-5

Number of peaks found: 1 Area 1: 100.6

Peak table for sample 5 : VASd2-5

Peak	Size [bp]	Conc. [ng/μl]	Molarity [nmol/l]	Observations
1	15	4.20	424.2	Lower Marker
2	125	0.76	9.3	
3	1,500	2.10	2.1	Upper Marker

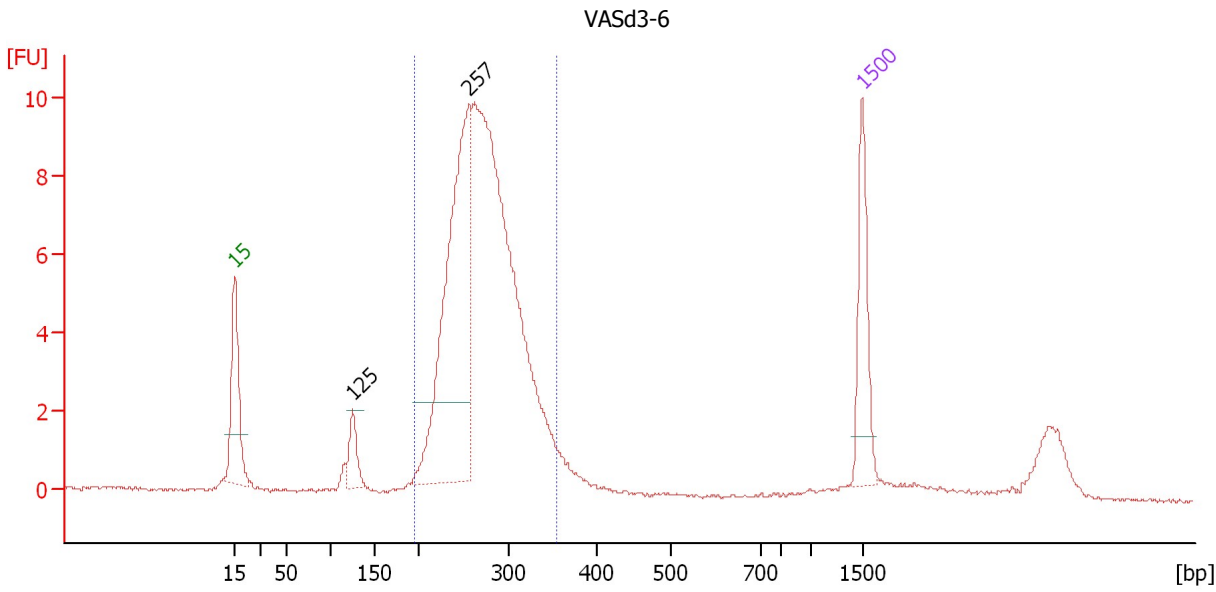
Region table for sample 5 : VASd2-5

From [bp]	To [bp]	Area	% of Total	Molarity [nmol/l]	Average Size [bp]	Size distribution in CV [%]	Conc. [ng/μl]	Co Name
190	378	100.6	90	194.4	273	13.3	34.59	Region 1

Assay Class: DNA 1000
 Data Path: C:\...ents and Settings\Bioanalyzer\2012-12-20\2012-12-20_002.xad

Created: 12/20/2012 3:13:49 PM
 Modified: 12/20/2012 3:55:00 PM

Electropherogram Summary Continued ...



Setpoint Deviations for sample 6 : VASd3-6

Height Threshold [FU] : 2

Overall Results for sample 6 : VASd3-6

Number of peaks found: 2 Area 1: 66.9

Peak table for sample 6 : VASd3-6

Peak	Size [bp]	Conc. [ng/μl]	Molarity [nmol/l]	Observations
1	15	4.20	424.2	Lower Marker
2	125	0.79	9.6	
3	257	9.06	53.5	
4	1,500	2.10	2.1	Upper Marker

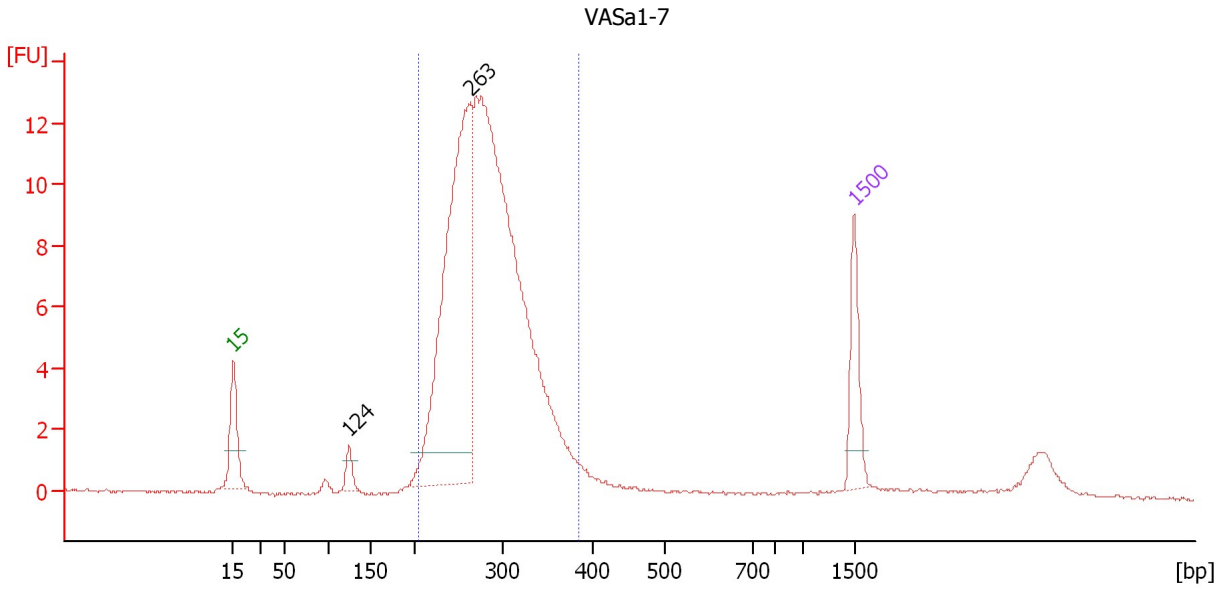
Region table for sample 6 : VASd3-6

From [bp]	To [bp]	Area	% of Total	Molarity [nmol/l]	Average Size [bp]	Size distribution in CV [%]	Conc. [ng/μl]	Co Name
196	355	66.9	82	141.0	273	11.9	25.15	Region 1

Assay Class: DNA 1000
 Data Path: C:\...ents and Settings\Bioanalyzer\2012-12-20\2012-12-20_002.xad

Created: 12/20/2012 3:13:49 PM
 Modified: 12/20/2012 3:55:00 PM

Electropherogram Summary Continued ...



Overall Results for sample 7 : VASa1-7

Number of peaks found: 2 Area 1: 96.7

Peak table for sample 7 : VASa1-7

Peak	Size [bp]	Conc. [ng/μl]	Molarity [nmol/l]	Observations
1	15	4.20	424.2	Lower Marker
2	124	0.60	7.3	
3	263	15.26	88.0	
4	1,500	2.10	2.1	Upper Marker

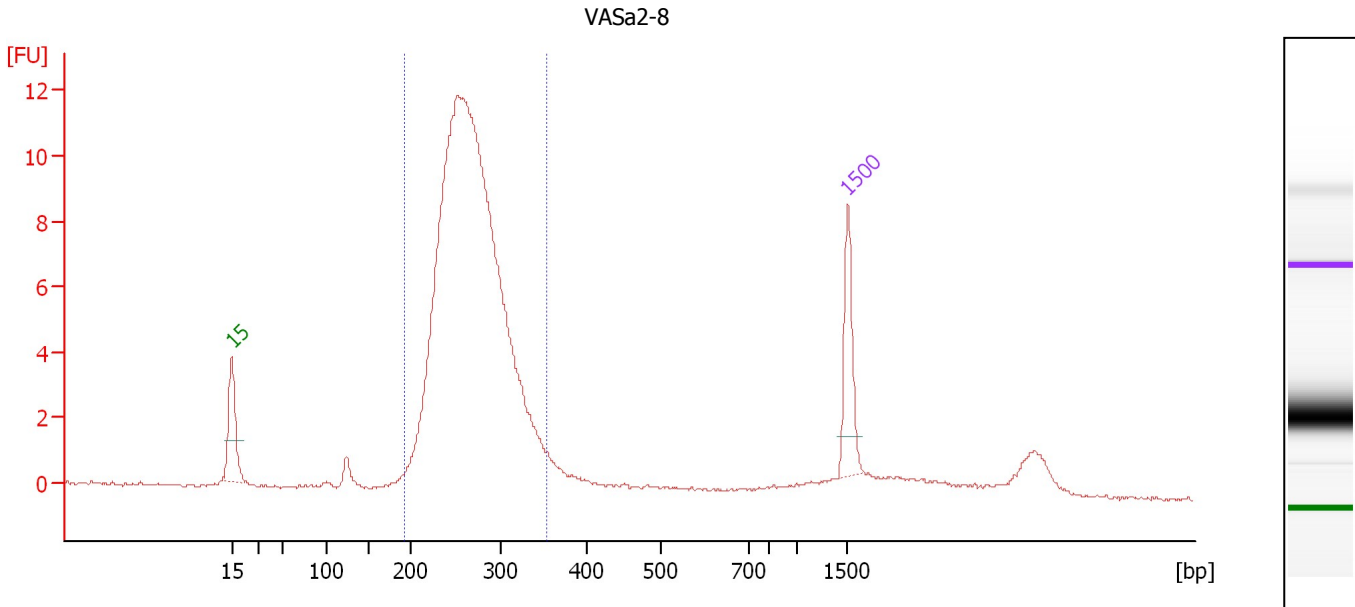
Region table for sample 7 : VASa1-7

From [bp]	To [bp]	Area	% of Total	Molarity [nmol/l]	Average Size [bp]	Size distribution in CV [%]	Conc. [ng/μl]	Co Name
205	386	96.7	85	233.9	282	13.3	42.88	Region 1

Assay Class: DNA 1000
 Data Path: C:\...ents and Settings\Bioanalyzer\2012-12-20\2012-12-20_002.xad

Created: 12/20/2012 3:13:49 PM
 Modified: 12/20/2012 3:55:00 PM

Electropherogram Summary Continued ...



Overall Results for sample 8 : VASa2-8

Number of peaks found: 0 Area 1: 76.1

Peak table for sample 8 : VASa2-8

Peak	Size [bp]	Conc. [ng/μl]	Molarity [nmol/l]	Observations
1	15	4.20	424.2	Lower Marker
2	1,500	2.10	2.1	Upper Marker

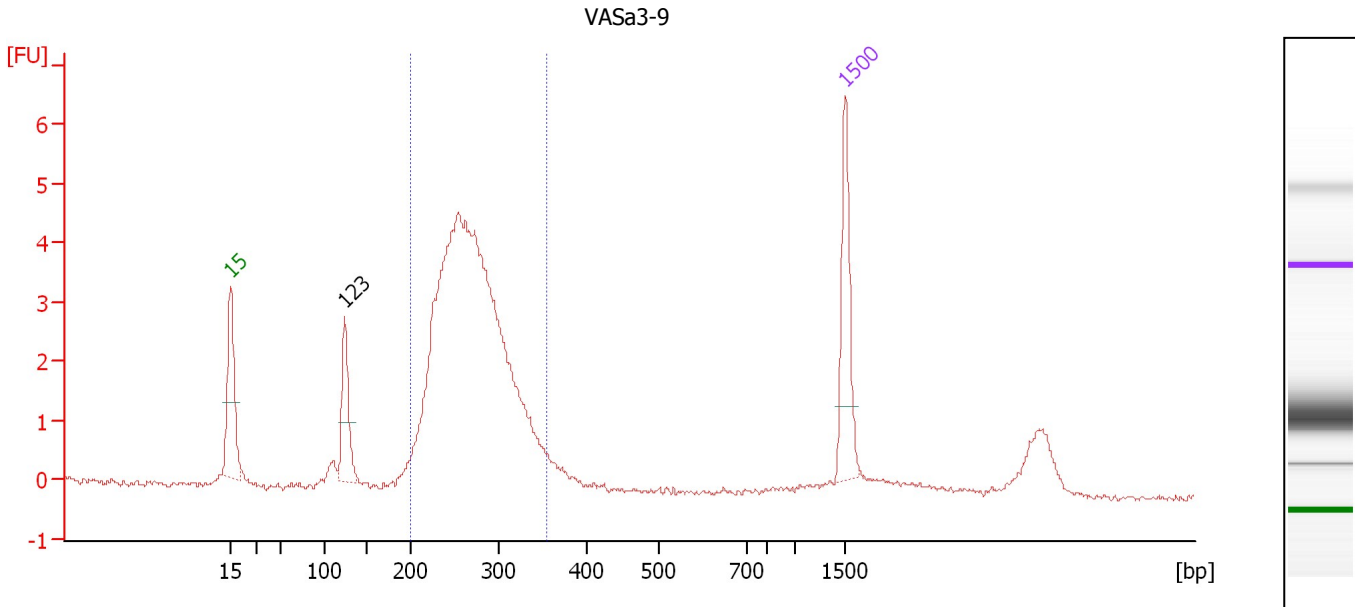
Region table for sample 8 : VASa2-8

From [bp]	To [bp]	Area	% of Total	Molarity [nmol/l]	Average Size [bp]	Size distribution in CV [%]	Conc. [ng/μl]	Co Name
192	353	76.1	81	218.6	268	12.0	38.23	Region 1

Assay Class: DNA 1000
 Data Path: C:\...ents and Settings\Bioanalyzer\2012-12-20\2012-12-20_002.xad

Created: 12/20/2012 3:13:49 PM
 Modified: 12/20/2012 3:55:00 PM

Electropherogram Summary Continued ...



Overall Results for sample 9 : VASa3-9

Number of peaks found: 1 Area 1: 31.4

Peak table for sample 9 : VASa3-9

Peak	Size [bp]	Conc. [ng/μl]	Molarity [nmol/l]	Observations
1	15	4.20	424.2	Lower Marker
2	123	1.64	20.1	
3	1,500	2.10	2.1	Upper Marker

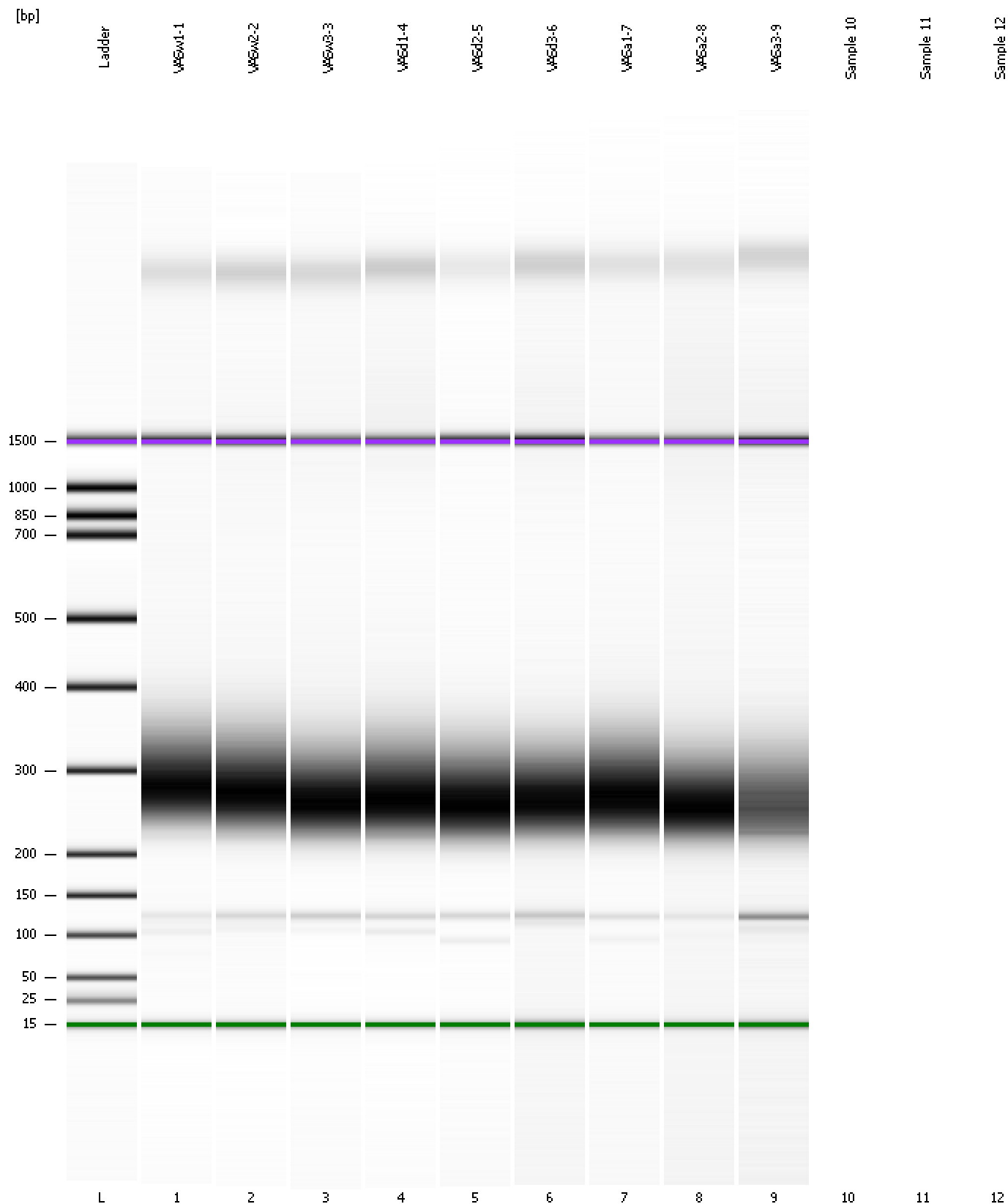
Region table for sample 9 : VASa3-9

From [bp]	To [bp]	Area	% of Total	Molarity [nmol/l]	Average Size [bp]	Size distribution in CV [%]	Conc. [ng/μl]	Co Name
201	356	31.4	77	113.4	270	12.6	19.99	Region 1

Assay Class: DNA 1000
Data Path: C:\...ents and Settings\Bioanalyzer\2012-12-20\2012-12-20_002.xad

Created: 12/20/2012 3:13:49 PM
Modified: 12/20/2012 3:55:00 PM

Gel Image



Assay Class: DNA 1000
Data Path: C:\...ents and Settings\Bioanalyzer\2012-12-20\2012-12-20_002.xad

Created: 12/20/2012 3:13:49 PM
Modified: 12/20/2012 3:55:00 PM

Invalid Samples

Sample 10 has not been run, no results available.

Sample 11 has not been run, no results available.

Sample 12 has not been run, no results available.