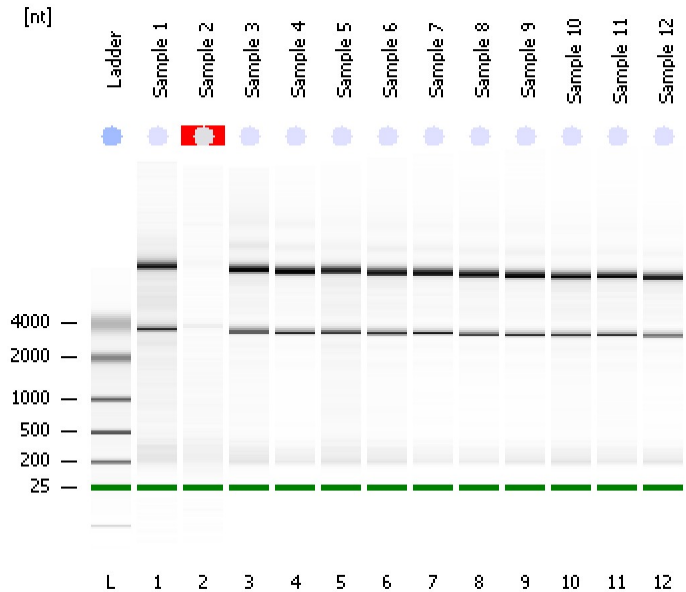


Assay Class: Eukaryote Total RNA Nano
Data Path: C:\...ents and Settings\Bioanalyzer\2012-12-21\2012-12-21_004.xad

Created: 12/21/2012 2:43:19 PM
Modified: 12/21/2012 3:07:09 PM

Electrophoresis File Run Summary



Instrument Information:

Instrument Name: DE13701086 Firmware: C.01.069
Serial#: DE13701086 Type: G2938B

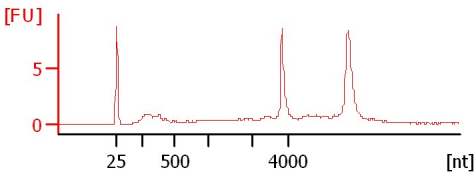
Assay Information:

Assay Origin Path: C:\Program Files\Agilent\2100 bioanalyzer\2100 expert\assays\RNA\Eukaryote Total RNA Nano Series II.xsy
Assay Class: Eukaryote Total RNA Nano
Version: 2.6
Assay Comments: Total RNA Analysis ng sensitivity (Eukaryote)
© Copyright 2003 - 2009 Agilent Technologies, Inc.

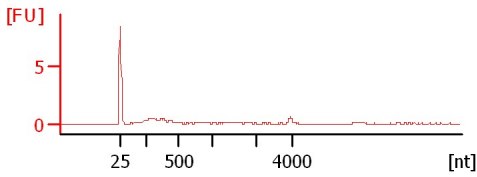
Chip Information:

Chip Lot #:
Reagent Kit Lot #:
Chip Comments:

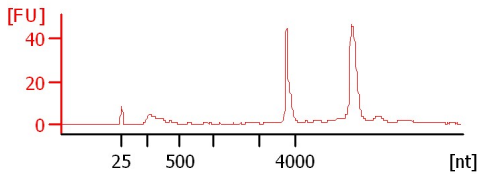
Sample 1
RIN: 8.50



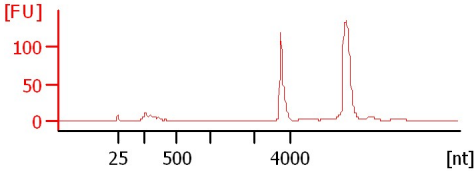
Sample 2
RIN N/A



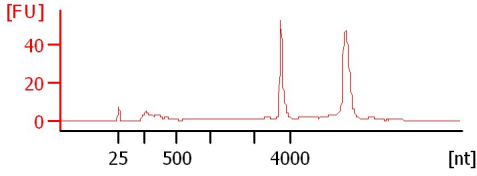
Sample 3
RIN: 9.70



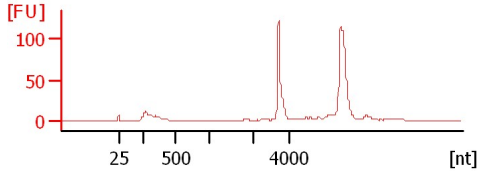
Sample 4
RIN: 10



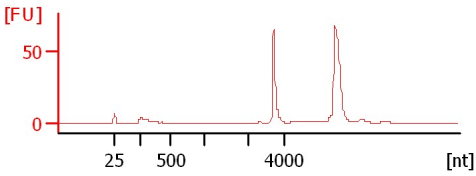
Sample 5
RIN: 8.80



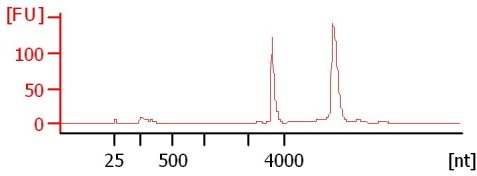
Sample 6
RIN: 9.50



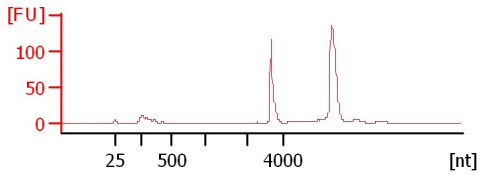
Sample 7
RIN: 9.90



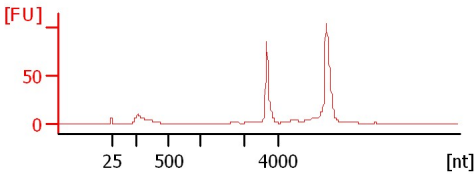
Sample 8
RIN: 9.90



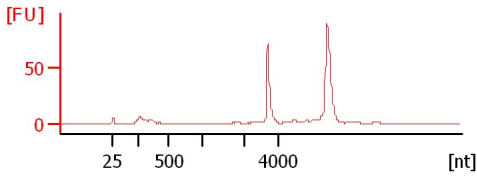
Sample 9
RIN: 10



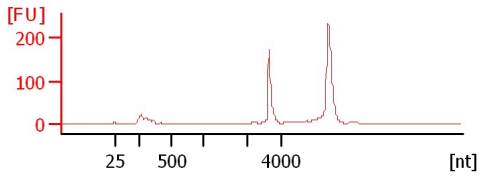
Sample 10
RIN: 9.40



Sample 11
RIN: 9.50



Sample 12
RIN: 9.90



Assay Class: Eukaryote Total RNA Nano
 Data Path: C:\...ents and Settings\Bioanalyzer\2012-12-21\2012-12-21_004.xad

Created: 12/21/2012 2:43:19 PM
 Modified: 12/21/2012 3:07:09 PM

Electrophoresis File Run Summary (Chip Summary)

Sample Name	Sample Comment	Status	Result Label	Result Color
Sample 1		✓	RIN: 8.50	
Sample 2		✓	RIN N/A	
Sample 3		✓	RIN: 9.70	
Sample 4		✓	RIN:10	
Sample 5		✓	RIN: 8.80	
Sample 6		✓	RIN: 9.50	
Sample 7		✓	RIN: 9.90	
Sample 8		✓	RIN: 9.90	
Sample 9		✓	RIN:10	
Sample 10		✓	RIN: 9.40	
Sample 11		✓	RIN: 9.50	
Sample 12		✓	RIN: 9.90	
Ladder		✓	All Other Samples	

Chip Lot #

Reagent Kit Lot #

Chip Comments :

Assay Class: Eukaryote Total RNA Nano
Data Path: C:\...ents and Settings\Bioanalyzer\2012-12-21\2012-12-21_004.xad

Created: 12/21/2012 2:43:19 PM
Modified: 12/21/2012 3:07:09 PM

Electrophoresis Assay Details

General Analysis Settings

Number of Available Sample and Ladder Wells (Max.) : 13
Minimum Visible Range [s] : 17
Maximum Visible Range [s] : 70
Start Analysis Time Range [s] : 19
End Analysis Time Range [s] : 69
Ladder Concentration [ng/ μ l] : 150
Lower Marker Concentration [ng/ μ l] : 0
Upper Marker Concentration [ng/ μ l] : 0
Used Lower Marker for Quantitation
Standard Curve Fit is Logarithmic
Show Data Aligned to Lower Marker

Integrator Settings

Integration Start Time [s] : 19
Integration End Time [s] : 69
Slope Threshold : 0.6
Height Threshold [FU] : 0.5
Area Threshold : 0.2
Width Threshold [s] : 0.5
Baseline Plateau [s] : 6

Filter Settings

Filter Width [s] : 0.5
Polynomial Order : 4

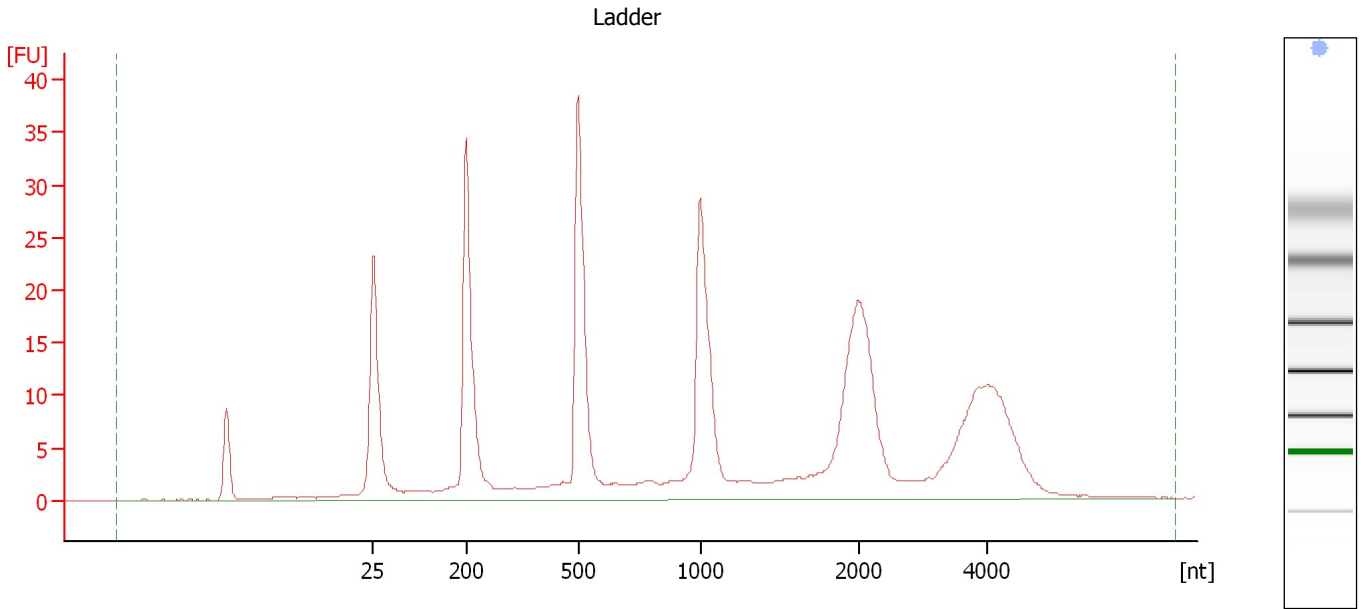
Ladder

Ladder Peak	Size
1	25
2	200
3	500
4	1000
5	2000
6	4000

Assay Class: Eukaryote Total RNA Nano
Data Path: C:\...ents and Settings\Bioanalyzer\2012-12-21\2012-12-21_004.xad

Created: 12/21/2012 2:43:19 PM
Modified: 12/21/2012 3:07:09 PM

Electropherogram Summary



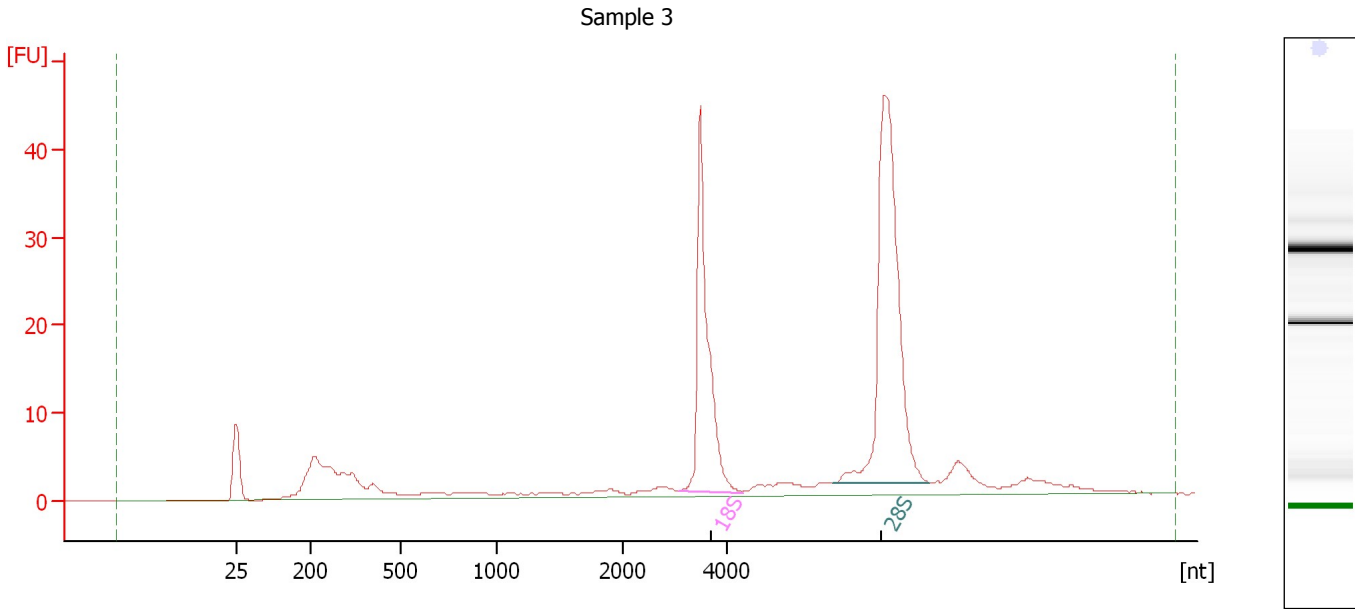
Overall Results for Ladder

RNA Area:	319.6	Result Flagging Color:	
RNA Concentration:	150 ng/ μ l	Result Flagging Label:	All Other Samples

Assay Class: Eukaryote Total RNA Nano
 Data Path: C:\...ents and Settings\Bioanalyzer\2012-12-21\2012-12-21_004.xad

Created: 12/21/2012 2:43:19 PM
 Modified: 12/21/2012 3:07:09 PM

Electropherogram Summary Continued ...



Overall Results for sample 3 : Sample 3

RNA Area:	232.9	RNA Integrity Number (RIN):	9.7 (B.02.08)
RNA Concentration:	109 ng/μl	Result Flagging Color:	
rRNA Ratio [28s / 18s]:	1.6	Result Flagging Label:	RIN: 9.70

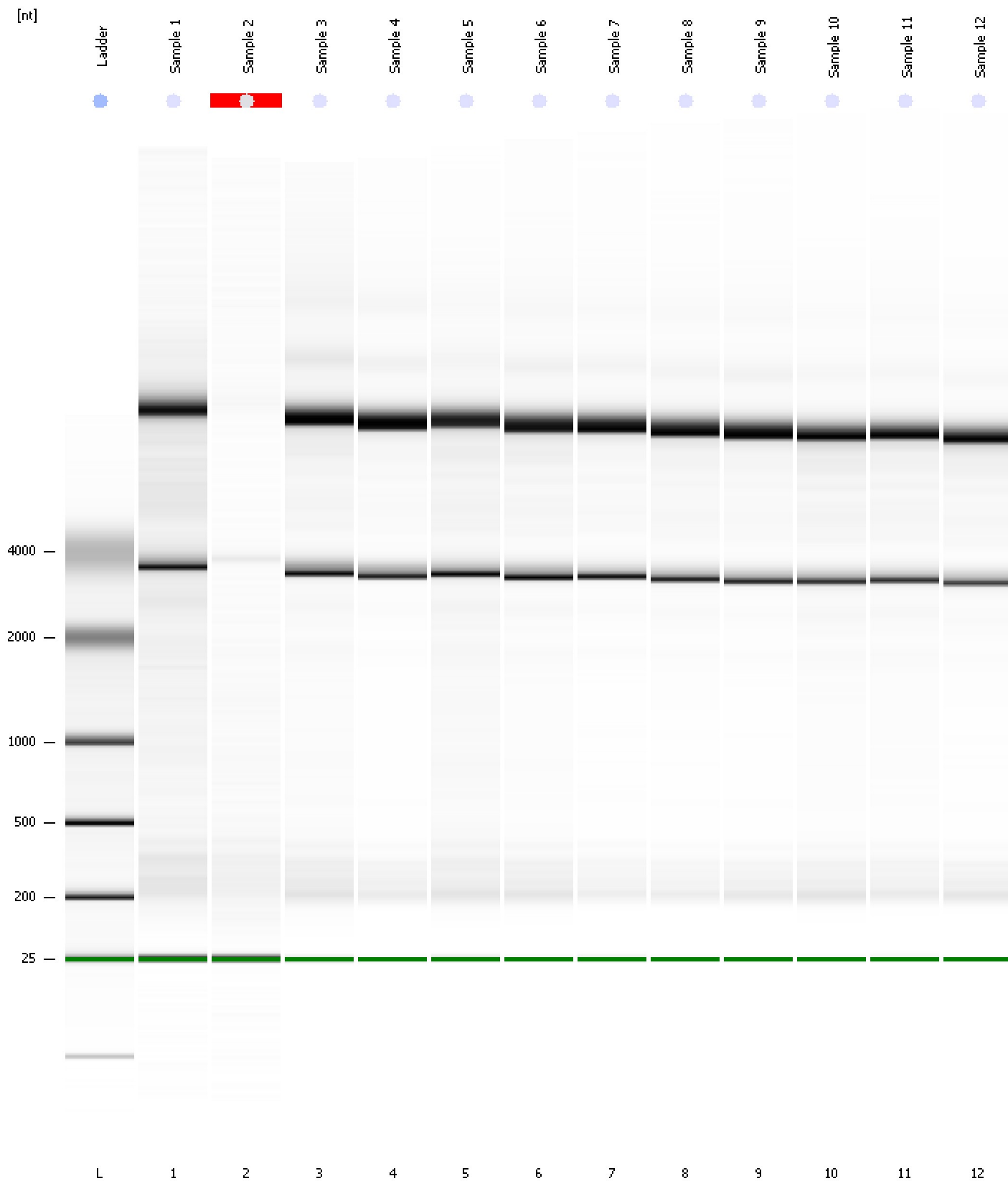
Fragment table for sample 3 : Sample 3

Name	Start Size [nt]	End Size [nt]	Area	% of total Area
18S	3,083	4,307	51.9	22.3
28S	6,070	7,937	85.6	36.7

Assay Class: Eukaryote Total RNA Nano
Data Path: C:\...ents and Settings\Bioanalyzer\2012-12-21\2012-12-21_004.xad

Created: 12/21/2012 2:43:19 PM
Modified: 12/21/2012 3:07:09 PM

Gel Image

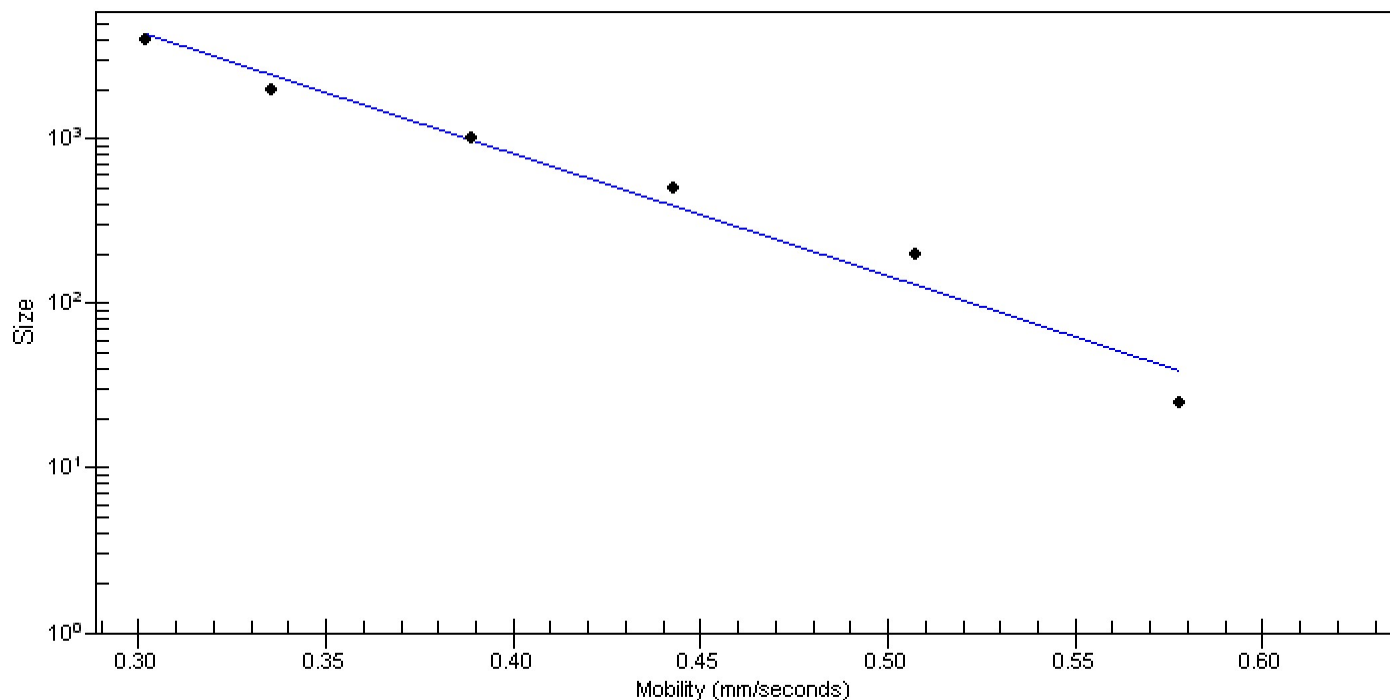


Assay Class: Eukaryote Total RNA Nano
Data Path: C:\...ents and Settings\Bioanalyzer\2012-12-21\2012-12-21_004.xad

Created: 12/21/2012 2:43:19 PM
Modified: 12/21/2012 3:07:09 PM

Curves

Standard Curve



Assay Class: Eukaryote Total RNA Nano
 Data Path: C:\...ents and Settings\Bioanalyzer\2012-12-21\2012-12-21_004.xad

Created: 12/21/2012 2:43:19 PM
 Modified: 12/21/2012 3:07:09 PM

Run Logbook

Description	Number	Source	Category	Sub Category	Time	Time Zone	User	Host
Run ended on port 1 (Number of wells acquired: 13)		Instrument	Run		12/21/2012 3:07:07 PM	(GMT --08:00) Pacific Standard Time	UC Davis	D8XSMGH1
Run started on port 1 (File: C:\Documents and Settings\Bioanalyzer\2012-12-21\2012-12-21_004.xad)		Instrument	Run		12/21/2012 2:43:25 PM	(GMT --08:00) Pacific Standard Time	UC Davis	D8XSMGH1
Product Number : G2938B		Instrument	Run		12/21/2012 2:43:25 PM	(GMT --08:00) Pacific Standard Time	UC Davis	D8XSMGH1
Name :		Instrument	Run		12/21/2012 2:43:25 PM	(GMT --08:00) Pacific Standard Time	UC Davis	D8XSMGH1
Vendor : Agilent Technologies		Instrument	Run		12/21/2012 2:43:25 PM	(GMT --08:00) Pacific Standard Time	UC Davis	D8XSMGH1
Serial# : DE13701086		Instrument	Run		12/21/2012 2:43:25 PM	(GMT --08:00) Pacific Standard Time	UC Davis	D8XSMGH1
Firmware : C.01.069		Instrument	Run		12/21/2012 2:43:25 PM	(GMT --08:00) Pacific Standard Time	UC Davis	D8XSMGH1
Cartridge : Electrode		Instrument	Run		12/21/2012 2:43:25 PM	(GMT --08:00) Pacific Standard Time	UC Davis	D8XSMGH1