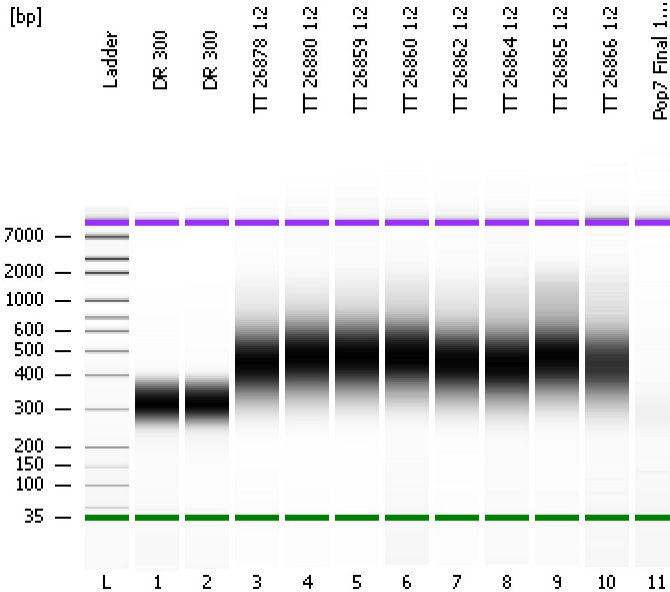


Assay Class: High Sensitivity DNA Assay  
Data Path: C:\...ents and Settings\Bioanalyzer\2012-12-21\2012-12-21\_005.xad

Created: 12/21/2012 3:42:31 PM  
Modified: 12/21/2012 4:26:16 PM

Electrophoresis File Run Summary



Instrument Information:

Instrument Name: DE13701086      Firmware: C.01.069  
Serial#: DE13701086      Type: G2938B

Assay Information:

Assay Origin Path: C:\Program Files\Agilent\2100 bioanalyzer\2100 expert\assays\dsDNA\High Sensitivity DNA.xsy  
Assay Class: High Sensitivity DNA Assay  
Version: 1.03  
Assay Comments: Copyright © 2003-2010 Agilent Technologies

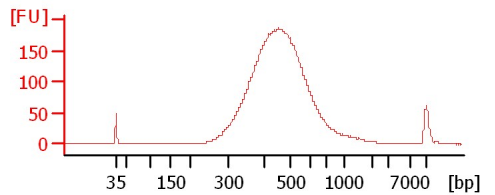
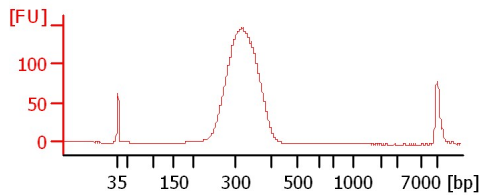
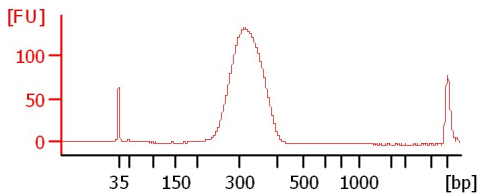
Chip Information:

Chip Lot #:   
Reagent Kit Lot #:   
Chip Comments:

DR 300

DR 300

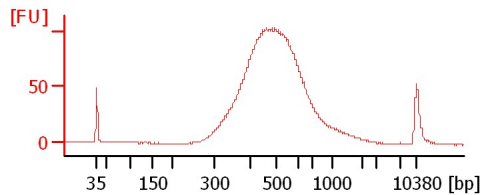
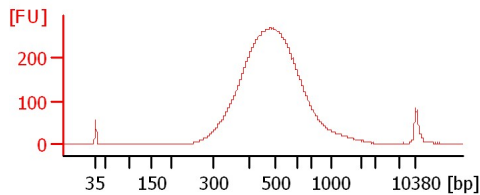
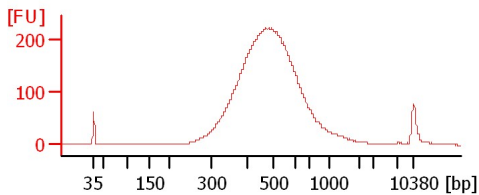
TT 26878 1:2



TT 26880 1:2

TT 26859 1:2

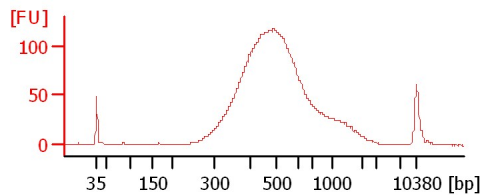
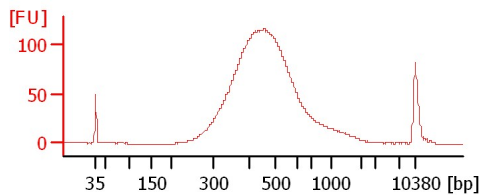
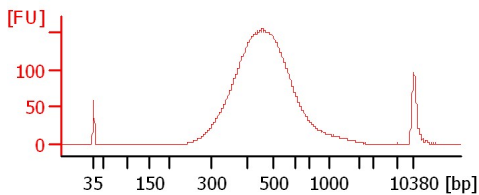
TT 26860 1:2



TT 26862 1:2

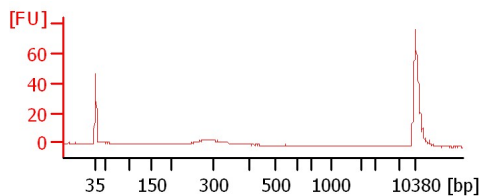
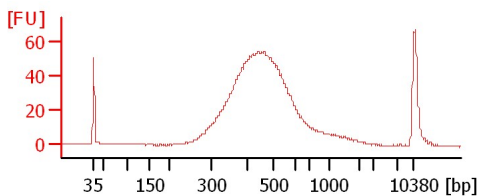
TT 26864 1:2

TT 26865 1:2



TT 26866 1:2

Pop7 Final 1:10



Assay Class: High Sensitivity DNA Assay  
Data Path: C:\...ents and Settings\Bioanalyzer\2012-12-21\2012-12-21\_005.xad

Created: 12/21/2012 3:42:31 PM  
Modified: 12/21/2012 4:26:16 PM

**Electrophoresis File Run Summary (Chip Summary)**

Sample Name	Sample Comment	Rest. Digest	Status	Observation	Result Label	Result Color
DR 300		<input type="checkbox"/>	✓			
DR 300		<input type="checkbox"/>	✓			
TT 26878 1:2		<input type="checkbox"/>	✓			
TT 26880 1:2		<input type="checkbox"/>	✓			
TT 26859 1:2		<input type="checkbox"/>	✓			
TT 26860 1:2		<input type="checkbox"/>	✓			
TT 26862 1:2		<input type="checkbox"/>	✓			
TT 26864 1:2		<input type="checkbox"/>	✓			
TT 26865 1:2		<input type="checkbox"/>	✓			
TT 26866 1:2		<input type="checkbox"/>	✓			
Pop7 Final 1:10		<input type="checkbox"/>	✓			
Ladder		<input type="checkbox"/>	✓			

**Chip Lot #**

**Reagent Kit Lot #**

**Chip Comments :**

Assay Class: High Sensitivity DNA Assay  
Data Path: C:\...ents and Settings\Bioanalyzer\2012-12-21\2012-12-21\_005.xad

Created: 12/21/2012 3:42:31 PM  
Modified: 12/21/2012 4:26:16 PM

**Electrophoresis Assay Details**

**General Analysis Settings**

Number of Available Sample and Ladder Wells (Max.) : 12  
Minimum Visible Range [s] : 32  
Maximum Visible Range [s] : 138  
Start Analysis Time Range [s] : 33  
End Analysis Time Range [s] : 137.5  
Ladder Concentration [pg/μl] : 1950  
Uses Standard Area for Ladder Fragments  
Lower Marker Concentration [pg/μl] : 125  
Upper Marker Concentration [pg/μl] : 75  
Used Upper Marker for Quantitation  
Standard Curve Fit is Point to Point  
Show Data Aligned to Lower and Upper Marker

**Integrator Settings**

Integration Start Time [s] : 33.05  
Integration End Time [s] : 137  
Slope Threshold : 0.8  
Height Threshold [FU] : 5  
Area Threshold : 0.1  
Width Threshold [s] : 0.6  
Baseline Plateau [s] : 0.5

**Filter Settings**

Filter Width [s] : 0.5  
Polynomial Order : 4

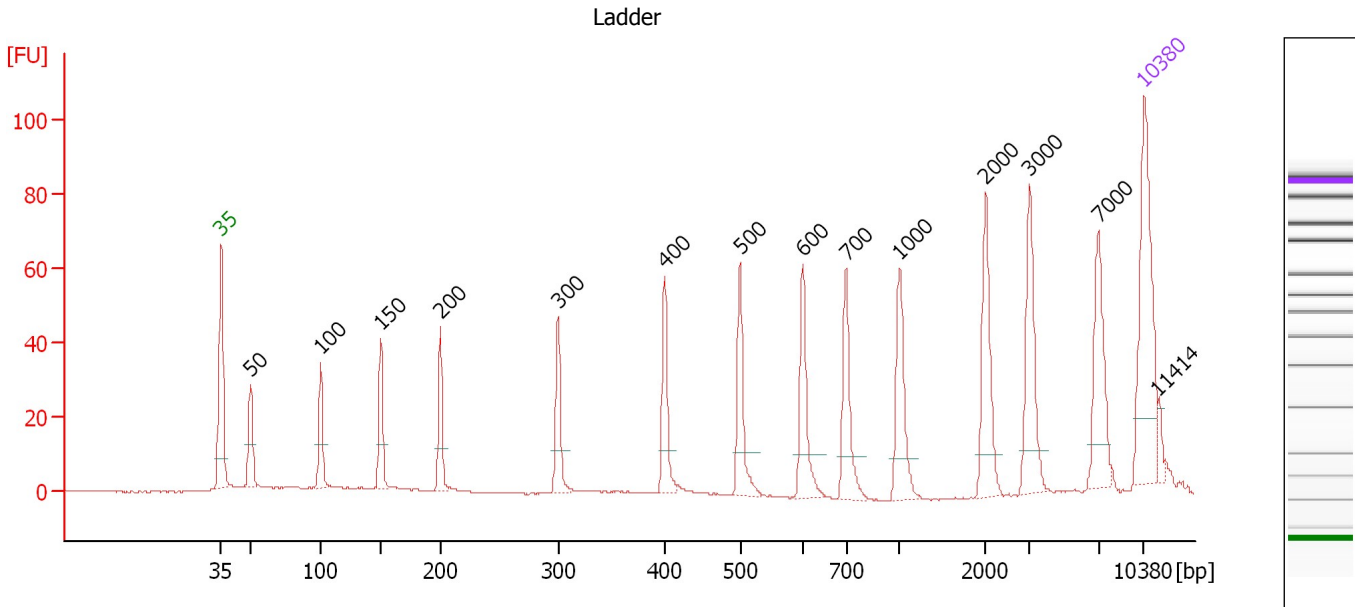
**Ladder**

Ladder Peak	Size	Area
1	35	160
2	50	210
3	100	208
4	150	221
5	200	242
6	300	270
7	400	305
8	500	306
9	600	336
10	700	321
11	1000	366
12	2000	413
13	3000	411
14	7000	400
15	10380	214

Assay Class: High Sensitivity DNA Assay  
 Data Path: C:\...ents and Settings\Bioanalyzer\2012-12-21\2012-12-21\_005.xad

Created: 12/21/2012 3:42:31 PM  
 Modified: 12/21/2012 4:26:16 PM

**Electropherogram Summary**



**Overall Results for Ladder**

Noise: 0.1

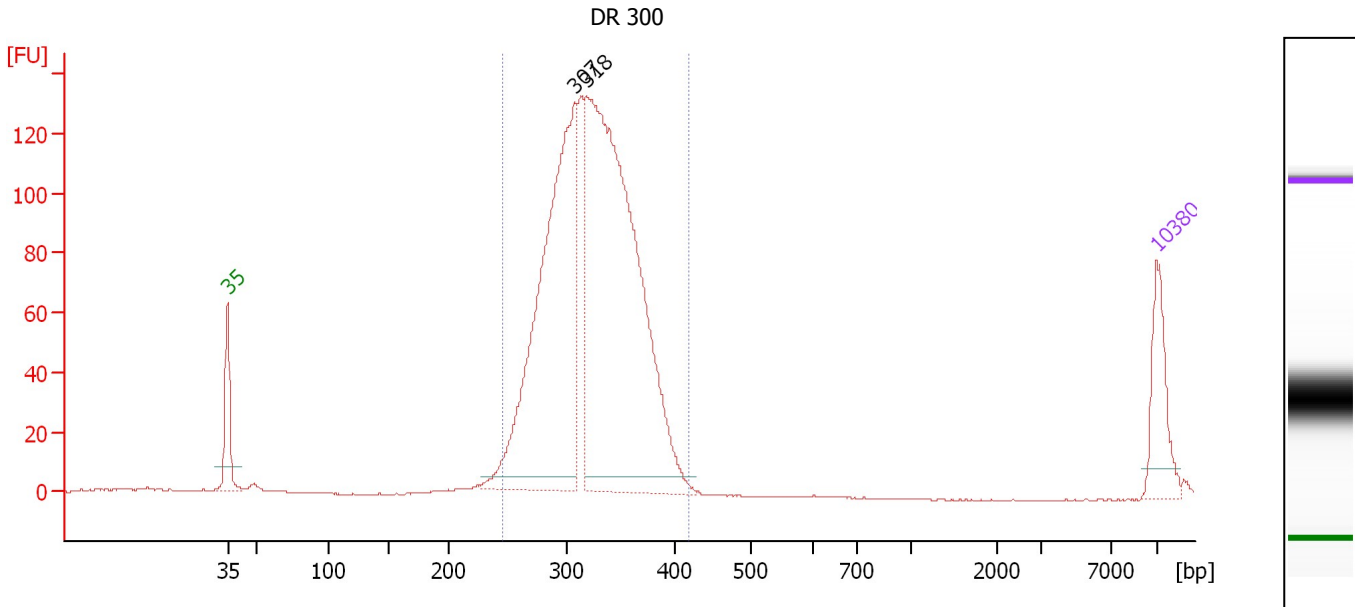
**Peak table for Ladder**

Peak	Size [bp]	Conc. [pg/μl]	Molarity [pmol/l]	Observations
1	35	125.00	5,411.3	Lower Marker
2	50	150.00	4,545.5	Ladder Peak
3	100	150.00	2,272.7	Ladder Peak
4	150	150.00	1,515.2	Ladder Peak
5	200	150.00	1,136.4	Ladder Peak
6	300	150.00	757.6	Ladder Peak
7	400	150.00	568.2	Ladder Peak
8	500	150.00	454.5	Ladder Peak
9	600	150.00	378.8	Ladder Peak
10	700	150.00	324.7	Ladder Peak
11	1,000	150.00	227.3	Ladder Peak
12	2,000	150.00	113.6	Ladder Peak
13	3,000	150.00	75.8	Ladder Peak
14	7,000	150.00	32.5	Ladder Peak
15	10,380	75.00	10.9	Upper Marker
16	11,414	0.00	0.0	

Assay Class: High Sensitivity DNA Assay  
 Data Path: C:\...ents and Settings\Bioanalyzer\2012-12-21\2012-12-21\_005.xad

Created: 12/21/2012 3:42:31 PM  
 Modified: 12/21/2012 4:26:16 PM

**Electropherogram Summary Continued ...**



**Overall Results for sample 1 : DR 300**

Number of peaks found: 2                      Corr. Area 1: 1,588.9  
 Noise: 0.2

**Peak table for sample 1 : DR 300**

Peak	Size [bp]	Conc. [pg/μl]	Molarity [pmol/l]	Observations
1	35	125.00	5,411.3	Lower Marker
2	307	811.84	4,009.8	
3	318	1,152.42	5,496.3	
4	10,380	75.00	10.9	Upper Marker

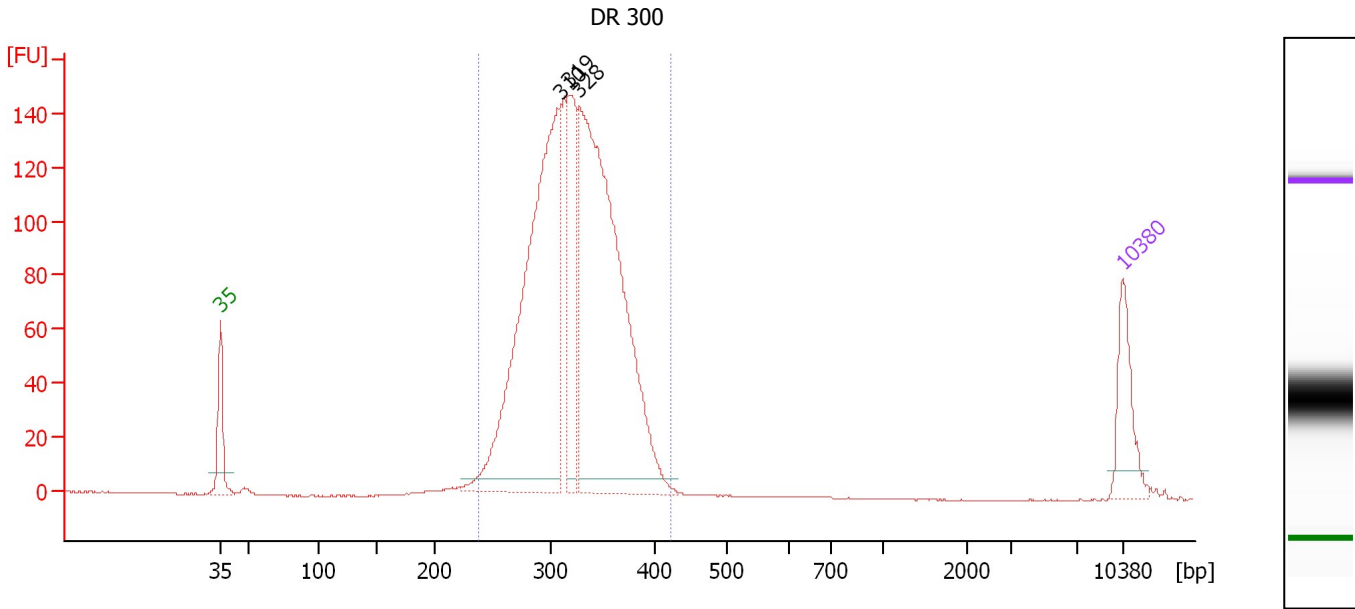
**Region table for sample 1 : DR 300**

From [bp]	To [bp]	Average Size [bp]	Molarity [pmol/l]	Conc. [pg/μl]	Corr. Area	% of Total	Size distribution in CV [%]	Color
247	420	323	9,547.5	2,007.47	1,588.9	98	10.6	Blue

Assay Class: High Sensitivity DNA Assay  
 Data Path: C:\...ents and Settings\Bioanalyzer\2012-12-21\2012-12-21\_005.xad

Created: 12/21/2012 3:42:31 PM  
 Modified: 12/21/2012 4:26:16 PM

**Electropherogram Summary Continued ...**



**Overall Results for sample 2 : DR 300**

Number of peaks found: 3                      Corr. Area 1: 1,805.1  
 Noise: 0.1

**Peak table for sample 2 : DR 300**

Peak	Size [bp]	Conc. [pg/μl]	Molarity [pmol/l]	Observations
1	35	125.00	5,411.3	Lower Marker
2	310	875.35	4,284.9	
3	319	218.85	1,040.3	
4	328	995.71	4,593.1	
5	10,380	75.00	10.9	Upper Marker

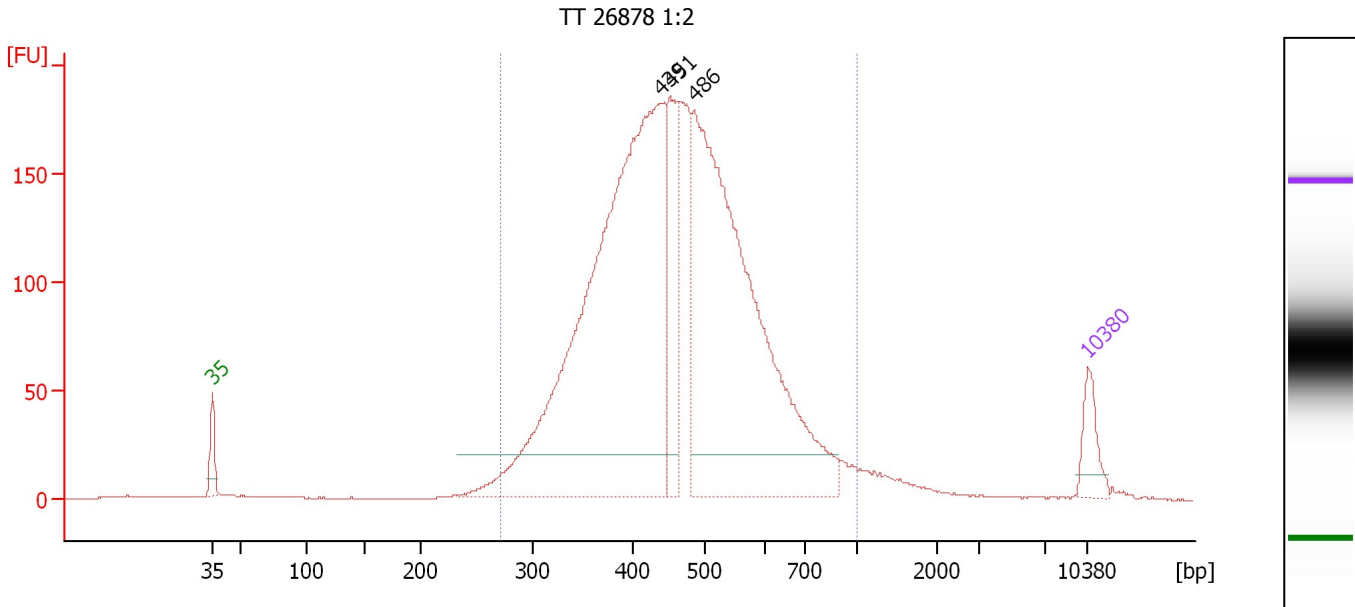
**Region table for sample 2 : DR 300**

From [bp]	To [bp]	Average Size [bp]	Molarity [pmol/l]	Conc. [pg/μl]	Corr. Area	% of Total	Size distribution in CV [%]	Color
238	423	323	10,742.2	2,258.11	1,805.1	98	10.9	Blue

Assay Class: High Sensitivity DNA Assay  
 Data Path: C:\...ents and Settings\Bioanalyzer\2012-12-21\2012-12-21\_005.xad

Created: 12/21/2012 3:42:31 PM  
 Modified: 12/21/2012 4:26:16 PM

**Electropherogram Summary Continued ...**



**Setpoint Deviations for sample 3 : TT 26878 1:2**

Height Threshold [FU] : 20

**Overall Results for sample 3 : TT 26878 1:2**

Number of peaks found: 3                      Corr. Area 1: 3,538.7  
 Noise: 0.2

**Peak table for sample 3 : TT 26878 1:2**

Peak	Size [bp]	Conc. [pg/µl]	Molarity [pmol/l]	Observations
1	35	125.00	5,411.3	Lower Marker
2	439	2,506.17	8,640.6	
3	451	354.54	1,190.0	
4	486	1,935.27	6,035.7	
5	10,380	75.00	10.9	Upper Marker

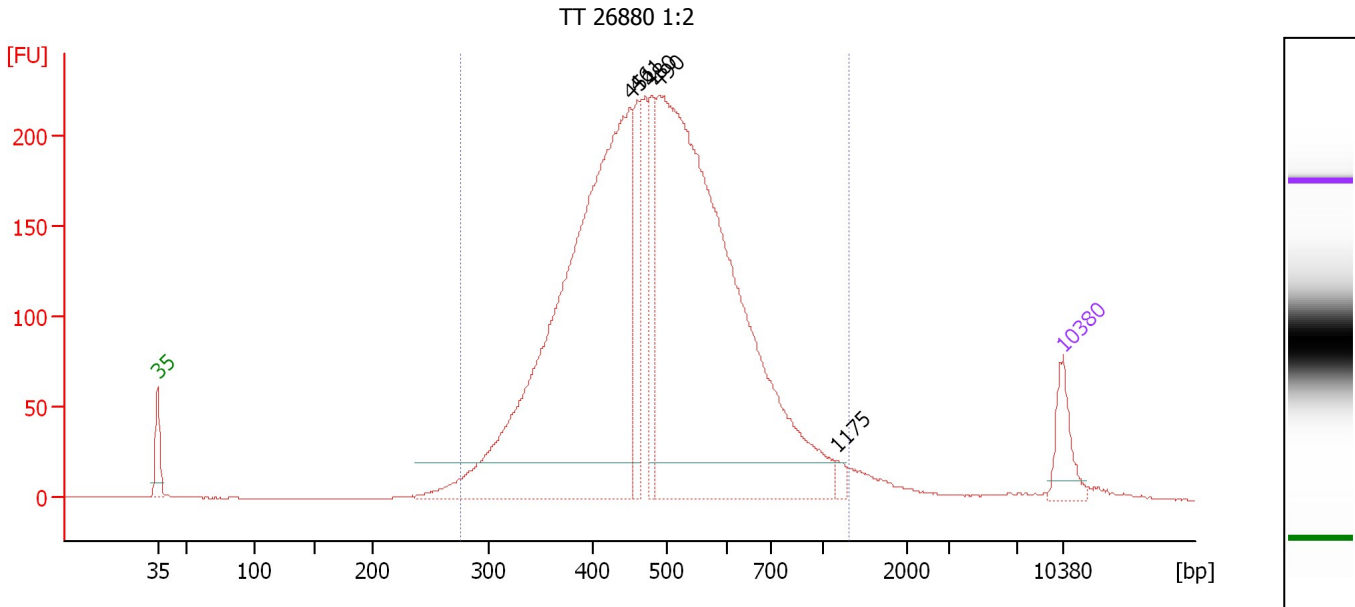
**Region table for sample 3 : TT 26878 1:2**

From [bp]	To [bp]	Average Size [bp]	Molarity [pmol/l]	Conc. [pg/µl]	Corr. Area	% of Total	Size distribution in CV [%]	Color
272	1,000	469	18,311.9	5,293.51	3,538.7	96	23.8	Blue

Assay Class: High Sensitivity DNA Assay  
 Data Path: C:\...ents and Settings\Bioanalyzer\2012-12-21\2012-12-21\_005.xad

Created: 12/21/2012 3:42:31 PM  
 Modified: 12/21/2012 4:26:16 PM

**Electropherogram Summary Continued ...**



**Setpoint Deviations for sample 4 : TT 26880 1:2**

Height Threshold [FU] : 20

**Overall Results for sample 4 : TT 26880 1:2**

Number of peaks found: 5                      Corr. Area 1: 4,315.8  
 Noise: 0.2

**Peak table for sample 4 : TT 26880 1:2**

Peak	Size [bp]	Conc. [pg/μl]	Molarity [pmol/l]	Observations
1	35	125.00	5,411.3	Lower Marker
2	451	2,047.52	6,877.4	
3	461	183.20	602.0	
4	480	183.18	577.8	
5	490	2,265.72	7,012.1	
6	1,175	18.50	23.8	
7	10,380	75.00	10.9	Upper Marker

**Region table for sample 4 : TT 26880 1:2**

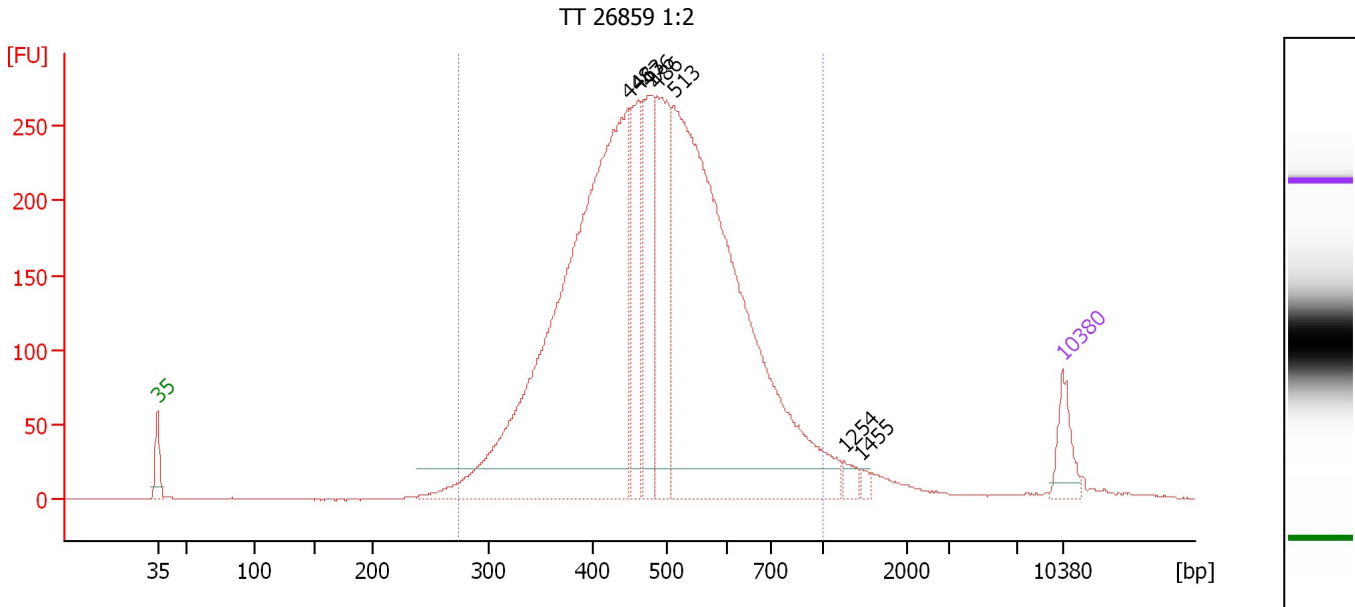
From [bp]	To [bp]	Average Size [bp]	Molarity [pmol/l]	Conc. [pg/μl]	Corr. Area	% of Total	Size distribution in CV [%]	Color
276	1,310	503	15,751.3	4,806.69	4,315.8	97	27.9	Blue



Assay Class: High Sensitivity DNA Assay  
 Data Path: C:\...ents and Settings\Bioanalyzer\2012-12-21\2012-12-21\_005.xad

Created: 12/21/2012 3:42:31 PM  
 Modified: 12/21/2012 4:26:16 PM

**Electropherogram Summary Continued ...**



**Setpoint Deviations for sample 5 : TT 26859 1:2**

Height Threshold [FU] : 20

**Overall Results for sample 5 : TT 26859 1:2**

Number of peaks found: 7                      Corr. Area 1: 5,206.1  
 Noise: 0.1

**Peak table for sample 5 : TT 26859 1:2**

Peak	Size [bp]	Conc. [pg/μl]	Molarity [pmol/l]	Observations
1	35	125.00	5,411.3	Lower Marker
2	448	2,446.16	8,267.8	
3	463	342.41	1,121.7	
4	476	362.79	1,154.9	
5	486	499.88	1,557.6	
6	513	2,334.42	6,896.5	
7	1,254	27.54	33.3	
8	1,455	13.79	14.4	
9	10,380	75.00	10.9	Upper Marker

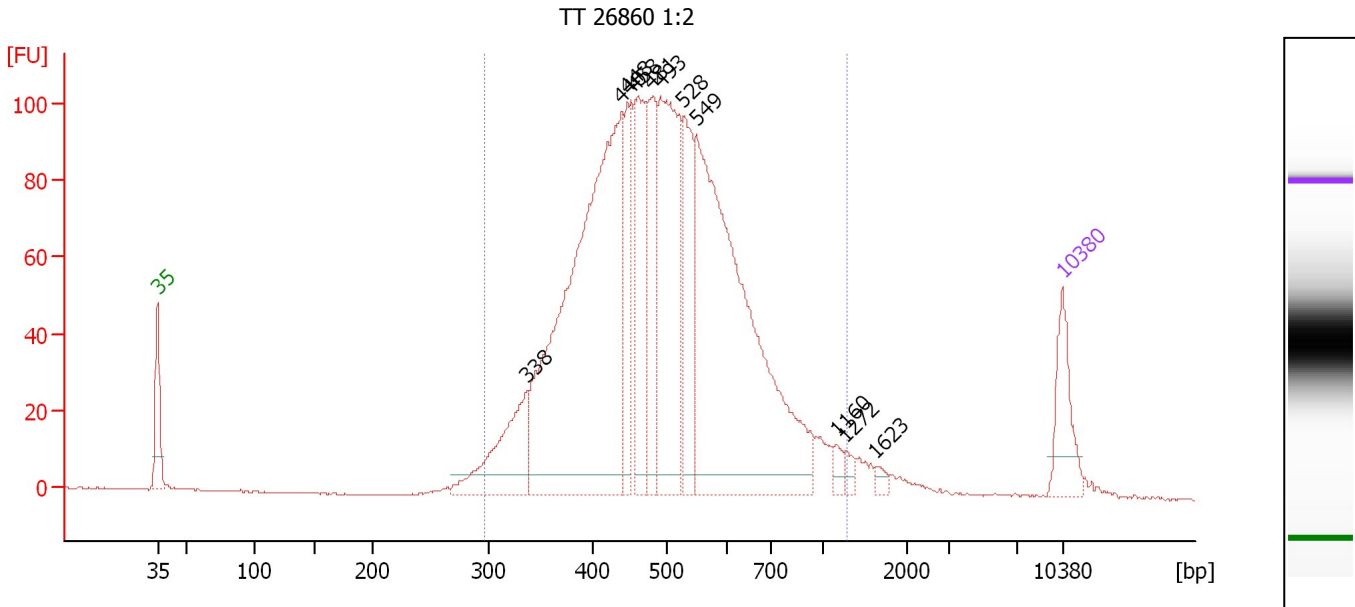
**Region table for sample 5 : TT 26859 1:2**

From [bp]	To [bp]	Average Size [bp]	Molarity [pmol/l]	Conc. [pg/μl]	Corr. Area	% of Total	Size distribution in CV [%]	Color
274	1,000	496	19,858.5	6,039.61	5,206.1	95	24.3	Blue

Assay Class: High Sensitivity DNA Assay  
 Data Path: C:\...ents and Settings\Bioanalyzer\2012-12-21\2012-12-21\_005.xad

Created: 12/21/2012 3:42:31 PM  
 Modified: 12/21/2012 4:26:16 PM

**Electropherogram Summary Continued ...**



**Overall Results for sample 6 : TT 26860 1:2**

Number of peaks found: 11      Corr. Area 1: 1,971.6  
 Noise: 0.2

**Peak table for sample 6 : TT 26860 1:2**

Peak	Size [bp]	Conc. [pg/μl]	Molarity [pmol/l]	Observations
1	35	125.00	5,411.3	Lower Marker
2	338	191.48	858.9	
3	440	1,054.41	3,632.8	
4	448	135.95	460.0	
5	458	211.19	698.4	
6	481	187.08	589.8	
7	493	414.25	1,274.2	
8	528	182.73	523.9	
9	549	903.91	2,492.5	
10	1,160	16.37	21.4	
11	1,272	14.51	17.3	
12	1,623	11.09	10.4	
13	10,380	75.00	10.9	Upper Marker

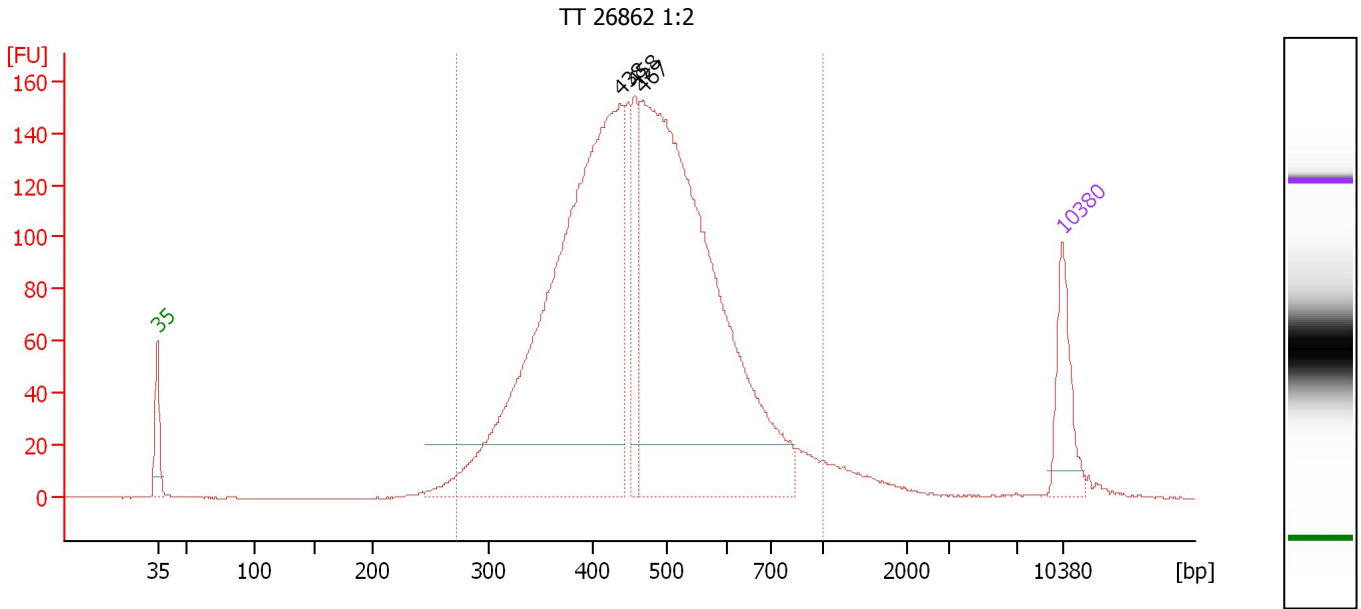
**Region table for sample 6 : TT 26860 1:2**

From [bp]	To [bp]	Average Size [bp]	Molarity [pmol/l]	Conc. [pg/μl]	Corr. Area	% of Total	Size distribution in CV [%]	Color
297	1,282	512	10,826.3	3,372.78	1,971.6	96	27.8	Blue

Assay Class: High Sensitivity DNA Assay  
 Data Path: C:\...ents and Settings\Bioanalyzer\2012-12-21\2012-12-21\_005.xad

Created: 12/21/2012 3:42:31 PM  
 Modified: 12/21/2012 4:26:16 PM

**Electropherogram Summary Continued ...**



**Setpoint Deviations for sample 7 : TT 26862 1:2**

Height Threshold [FU] : 20

**Overall Results for sample 7 : TT 26862 1:2**

Number of peaks found: 3                      Corr. Area 1: 2,891.4  
 Noise: 0.2

**Peak table for sample 7 : TT 26862 1:2**

Peak	Size [bp]	Conc. [pg/μl]	Molarity [pmol/l]	Observations
1	35	125.00	5,411.3	Lower Marker
2	438	1,239.68	4,285.3	
3	458	112.72	373.1	
4	467	1,253.67	4,063.7	
5	10,380	75.00	10.9	Upper Marker

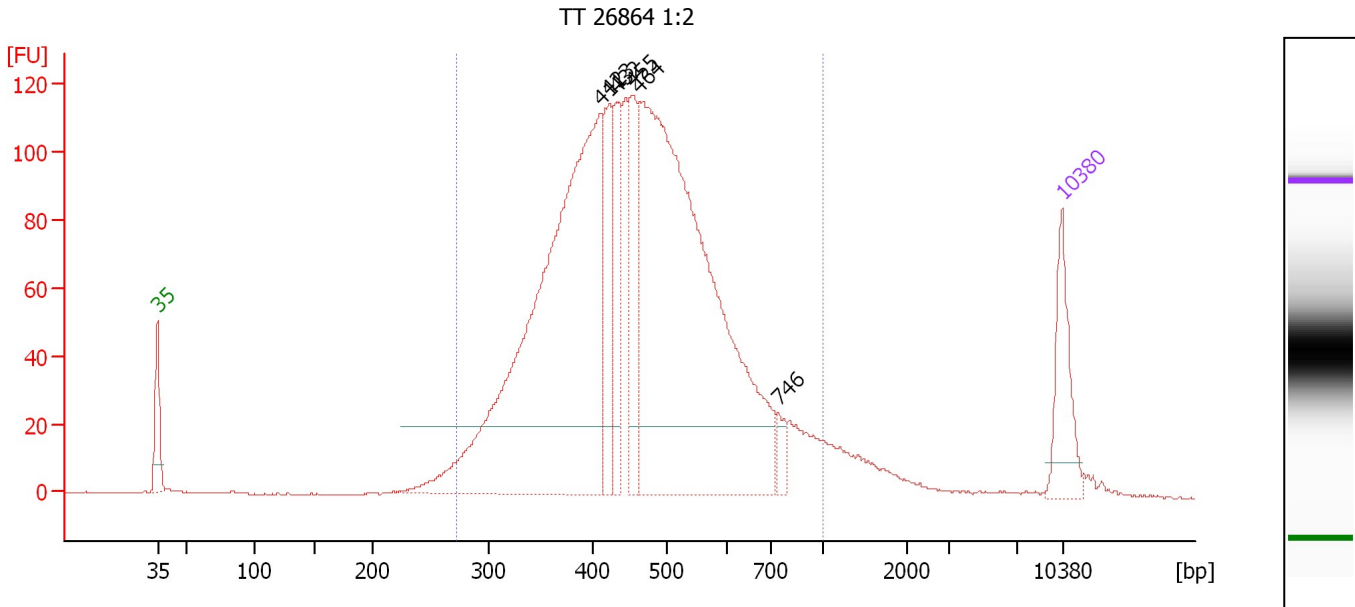
**Region table for sample 7 : TT 26862 1:2**

From [bp]	To [bp]	Average Size [bp]	Molarity [pmol/l]	Conc. [pg/μl]	Corr. Area	% of Total	Size distribution in CV [%]	Color
273	1,000	474	9,459.3	2,763.31	2,891.4	96	24.0	Blue

Assay Class: High Sensitivity DNA Assay  
 Data Path: C:\...ents and Settings\Bioanalyzer\2012-12-21\2012-12-21\_005.xad

Created: 12/21/2012 3:42:31 PM  
 Modified: 12/21/2012 4:26:16 PM

**Electropherogram Summary Continued ...**



**Setpoint Deviations for sample 8 : TT 26864 1:2**

Height Threshold [FU] : 20

**Overall Results for sample 8 : TT 26864 1:2**

Number of peaks found: 6                      Corr. Area 1: 2,314.2  
 Noise: 0.2

**Peak table for sample 8 : TT 26864 1:2**

Peak	Size [bp]	Conc. [pg/μl]	Molarity [pmol/l]	Observations
1	35	125.00	5,411.3	Lower Marker
2	411	977.35	3,604.7	
3	423	142.12	509.1	
4	432	111.15	390.0	
5	455	134.30	446.9	
6	464	1,077.69	3,517.2	
7	746	22.76	46.2	
8	10,380	75.00	10.9	Upper Marker

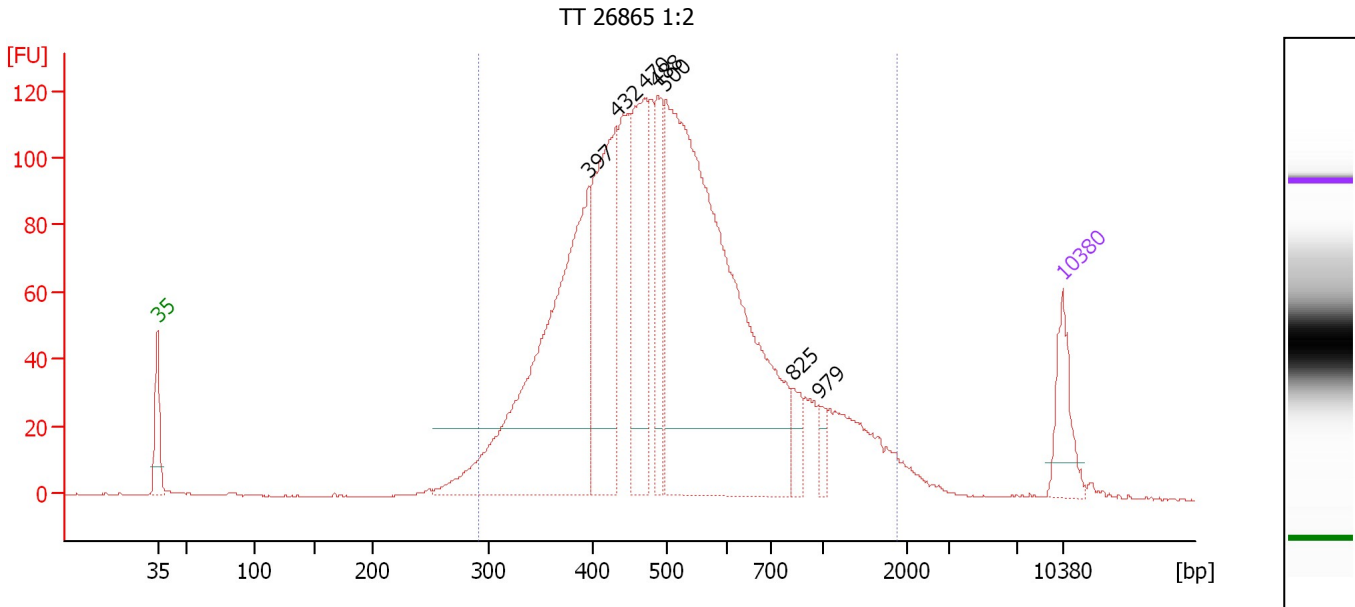
**Region table for sample 8 : TT 26864 1:2**

From [bp]	To [bp]	Average Size [bp]	Molarity [pmol/l]	Conc. [pg/μl]	Corr. Area	% of Total	Size distribution in CV [%]	Color
273	1,000	473	9,159.1	2,642.74	2,314.2	94	25.9	Blue

Assay Class: High Sensitivity DNA Assay  
 Data Path: C:\...ents and Settings\Bioanalyzer\2012-12-21\2012-12-21\_005.xad

Created: 12/21/2012 3:42:31 PM  
 Modified: 12/21/2012 4:26:16 PM

**Electropherogram Summary Continued ...**



**Setpoint Deviations for sample 9 : TT 26865 1:2**

Height Threshold [FU] : 20

**Overall Results for sample 9 : TT 26865 1:2**

Number of peaks found: 7                      Corr. Area 1: 2,418.0  
 Noise: 0.1

**Peak table for sample 9 : TT 26865 1:2**

Peak	Size [bp]	Conc. [pg/μl]	Molarity [pmol/l]	Observations
1	35	125.00	5,411.3	Lower Marker
2	397	837.98	3,201.3	
3	432	419.41	1,471.2	
4	470	317.36	1,022.5	
5	488	158.52	491.9	
6	500	1,349.88	4,093.2	
7	825	42.07	77.2	
8	979	22.49	34.8	
9	10,380	75.00	10.9	Upper Marker

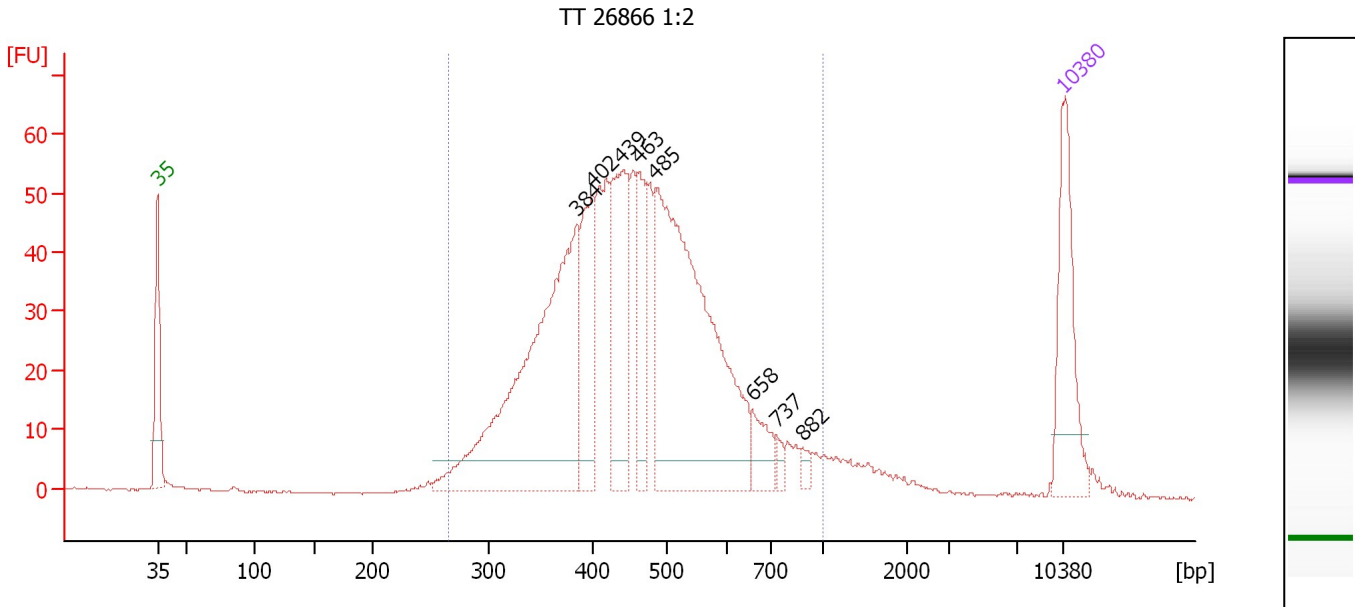
**Region table for sample 9 : TT 26865 1:2**

From [bp]	To [bp]	Average Size [bp]	Molarity [pmol/l]	Conc. [pg/μl]	Corr. Area	% of Total	Size distribution in CV [%]	Color
292	1,874	557	11,542.6	3,641.14	2,418.0	97	45.7	Blue

Assay Class: High Sensitivity DNA Assay  
 Data Path: C:\...ents and Settings\Bioanalyzer\2012-12-21\2012-12-21\_005.xad

Created: 12/21/2012 3:42:31 PM  
 Modified: 12/21/2012 4:26:16 PM

**Electropherogram Summary Continued ...**



**Overall Results for sample 10 : TT 26866 1:2**

Number of peaks found: 8                      Corr. Area 1: 1,052.1  
 Noise: 0.1

**Peak table for sample 10 : TT 26866 1:2**

Peak	Size [bp]	Conc. [pg/μl]	Molarity [pmol/l]	Observations
1	35	125.00	5,411.3	Lower Marker
2	384	380.01	1,498.4	
3	402	98.04	369.9	
4	439	131.33	452.9	
5	463	70.09	229.3	
6	485	395.87	1,235.5	
7	658	27.82	64.0	
8	737	7.57	15.6	
9	882	6.99	12.0	
10	10,380	75.00	10.9	Upper Marker

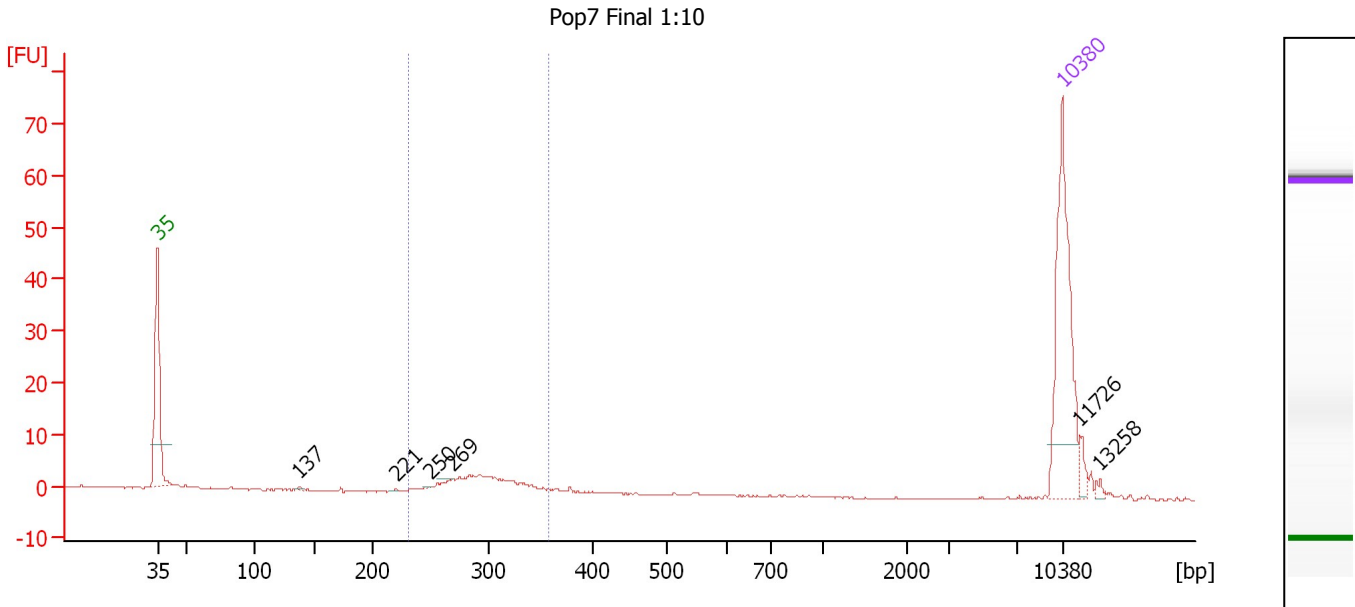
**Region table for sample 10 : TT 26866 1:2**

From [bp]	To [bp]	Average Size [bp]	Molarity [pmol/l]	Conc. [pg/μl]	Corr. Area	% of Total	Size distribution in CV [%]	Color
267	1,000	468	4,825.3	1,381.85	1,052.1	94	25.4	Blue

Assay Class: High Sensitivity DNA Assay  
 Data Path: C:\...ents and Settings\Bioanalyzer\2012-12-21\2012-12-21\_005.xad

Created: 12/21/2012 3:42:31 PM  
 Modified: 12/21/2012 4:26:16 PM

**Electropherogram Summary Continued ...**



**Setpoint Deviations for sample 11 : Pop7 Final 1:10**

Height Threshold [FU] : 0.1

**Overall Results for sample 11 : Pop7 Final 1:10**

Number of peaks found: 6                      Corr. Area 1: 25.1  
 Noise: 0.1

**Peak table for sample 11 : Pop7 Final 1:10**

Peak	Size [bp]	Conc. [pg/μl]	Molarity [pmol/l]	Observations
1	35	125.00	5,411.3	Lower Marker
2	137	0.99	10.9	
3	221	0.37	2.5	
4	250	0.25	1.5	
5	269	0.28	1.6	
6	10,380	75.00	10.9	Upper Marker
7	11,726	0.00	0.0	
8	13,258	0.00	0.0	

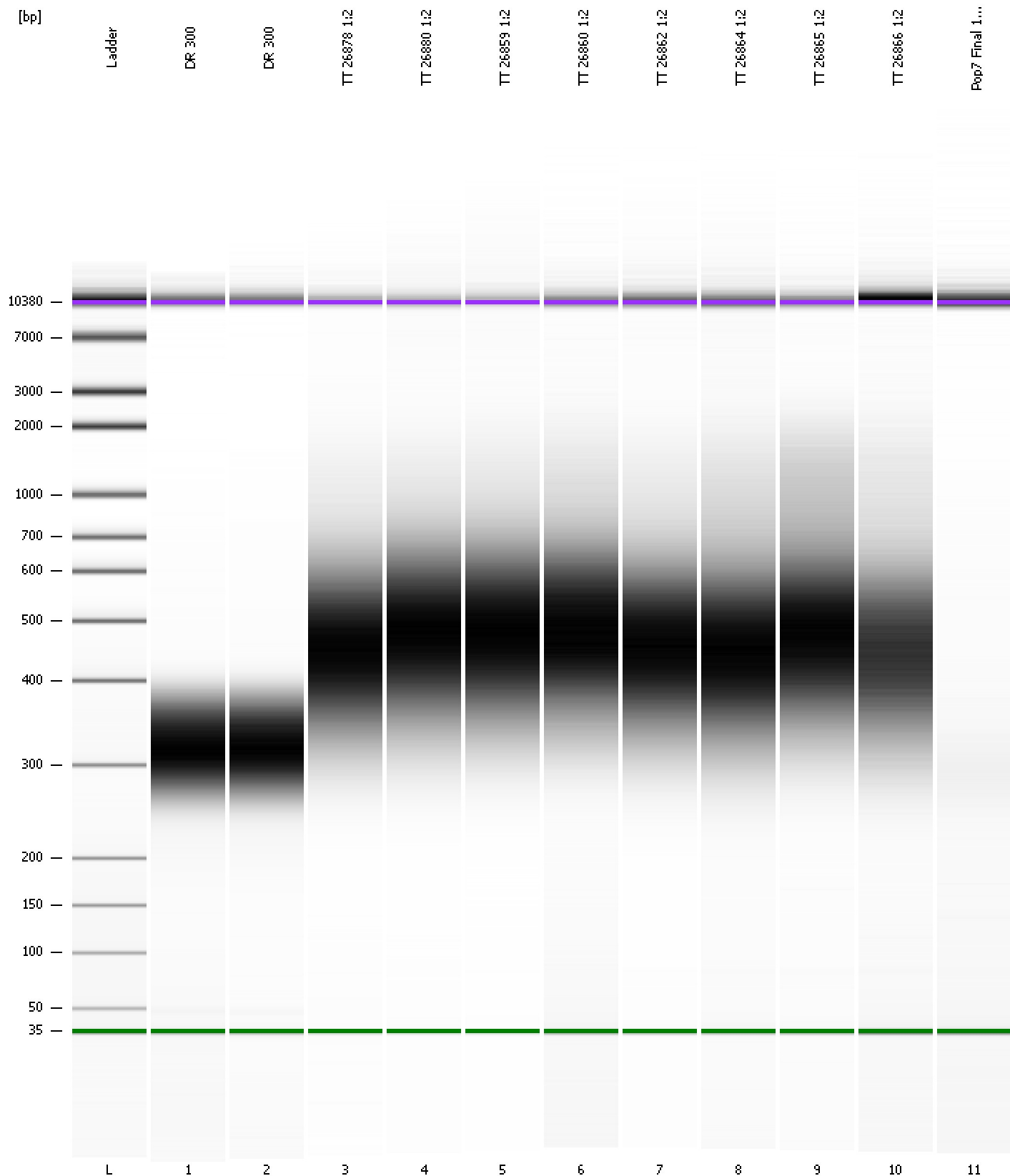
**Region table for sample 11 : Pop7 Final 1:10**

From [bp]	To [bp]	Average Size [bp]	Molarity [pmol/l]	Conc. [pg/μl]	Corr. Area	% of Total	Size distribution in CV [%]	Color
231	358	296	193.3	37.44	25.1	68	8.8	Blue

Assay Class: High Sensitivity DNA Assay  
Data Path: C:\...ents and Settings\Bioanalyzer\2012-12-21\2012-12-21\_005.xad

Created: 12/21/2012 3:42:31 PM  
Modified: 12/21/2012 4:26:16 PM

**Gel Image**





Assay Class: High Sensitivity DNA Assay  
 Data Path: C:\...ents and Settings\Bioanalyzer\2012-12-21\2012-12-21\_005.xad

Created: 12/21/2012 3:42:31 PM  
 Modified: 12/21/2012 4:26:16 PM

**Run Logbook**

Description	Number	Source	Category	Sub Category	Time	Time Zone	User	Host
Run ended on port 1 (Number of wells acquired: 12)		Instrument	Run		12/21/2012 4:23:50 PM	(GMT --08:00) Pacific Standard Time	UC Davis	D8XSMGH1
Run started on port 1 (File: C:\Documents and Settings\Bioanalyzer\2012-12-21\2012-12-21_005.xad)		Instrument	Run		12/21/2012 3:42:36 PM	(GMT --08:00) Pacific Standard Time	UC Davis	D8XSMGH1
Product Number : G2938B		Instrument	Run		12/21/2012 3:42:36 PM	(GMT --08:00) Pacific Standard Time	UC Davis	D8XSMGH1
Name :		Instrument	Run		12/21/2012 3:42:36 PM	(GMT --08:00) Pacific Standard Time	UC Davis	D8XSMGH1
Vendor : Agilent Technologies		Instrument	Run		12/21/2012 3:42:36 PM	(GMT --08:00) Pacific Standard Time	UC Davis	D8XSMGH1
Serial# : DE13701086		Instrument	Run		12/21/2012 3:42:36 PM	(GMT --08:00) Pacific Standard Time	UC Davis	D8XSMGH1
Firmware : C.01.069		Instrument	Run		12/21/2012 3:42:36 PM	(GMT --08:00) Pacific Standard Time	UC Davis	D8XSMGH1
Cartridge : Electrode		Instrument	Run		12/21/2012 3:42:36 PM	(GMT --08:00) Pacific Standard Time	UC Davis	D8XSMGH1