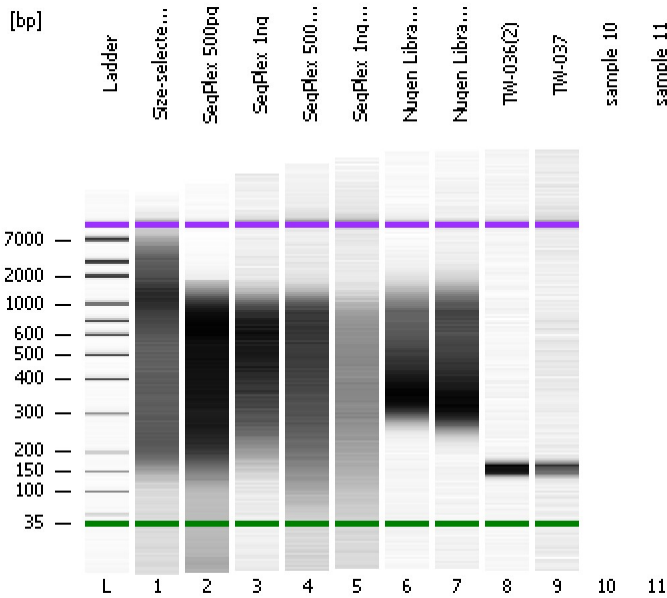


Assay Class: High Sensitivity DNA Assay
Data Path: C:\...ents and Settings\Bioanalyzer\2013-01-14\2013-01-14_001.xad

Created: 1/14/2013 10:20:52 AM
Modified: 1/14/2013 11:27:31 AM

Electrophoresis File Run Summary



Instrument Information:

Instrument Name: DE13701086 Firmware: C.01.069
Serial#: DE13701086 Type: G2938B

Assay Information:

Assay Origin Path: C:\Program Files\Agilent\2100 bioanalyzer\2100 expert\assays\dsDNA\High Sensitivity DNA.xsy
Assay Class: High Sensitivity DNA Assay
Version: 1.03
Assay Comments: Copyright © 2003-2010 Agilent Technologies

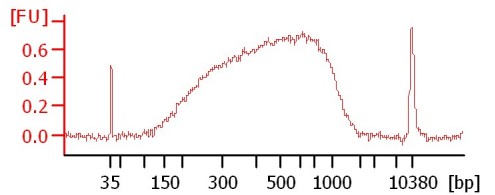
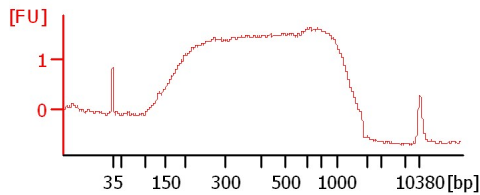
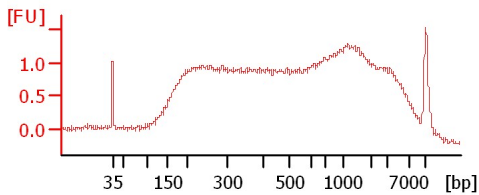
Chip Information:

Chip Lot #:
Reagent Kit Lot #:
Chip Comments:

Size-selected Input

SeqPlex 500pg

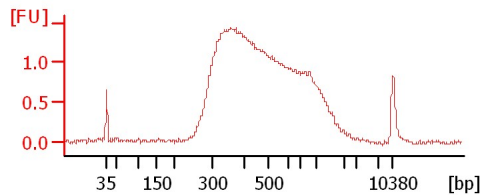
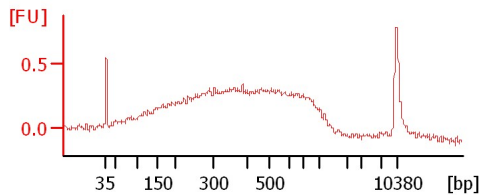
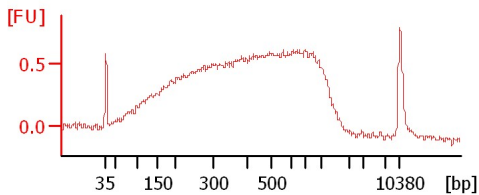
SeqPlex 1ng



SeqPlex 500pg-S1 digested

SeqPlex 1ng-S1 digested

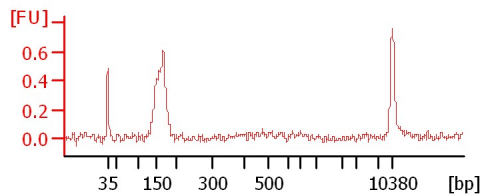
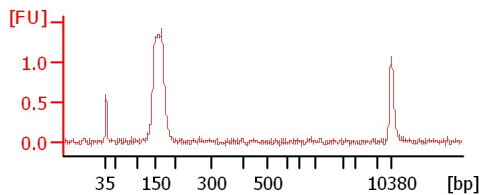
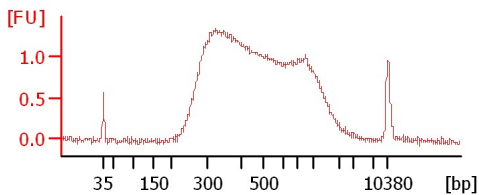
Nugen Library 1ng size-selected Input



Nugen Library 1ng Input

TW-036(2)

TW-037



Assay Class: High Sensitivity DNA Assay
 Data Path: C:\...ents and Settings\Bioanalyzer\2013-01-14\2013-01-14_001.xad

Created: 1/14/2013 10:20:52 AM
 Modified: 1/14/2013 11:27:31 AM

Electrophoresis File Run Summary (Chip Summary)

Sample Name	Sample Comment	Rest. Digest	Status	Observation	Result Label	Result Color
Size-selected Input		<input type="checkbox"/>	✓			
SeqPlex 500pg		<input type="checkbox"/>	✓			
SeqPlex 1ng		<input type="checkbox"/>	✓			
SeqPlex 500pg-S1 digested		<input type="checkbox"/>	✓			
SeqPlex 1ng-S1 digested		<input type="checkbox"/>	✓			
Nugen Library 1ng size-selected Input		<input type="checkbox"/>	✓			
Nugen Library 1ng Input		<input type="checkbox"/>	✓			
TW-036(2)		<input type="checkbox"/>	✓			
TW-037		<input type="checkbox"/>	✓			
sample 10		<input type="checkbox"/>				
sample 11		<input type="checkbox"/>				
Ladder		<input type="checkbox"/>	✓			

Chip Lot #

Reagent Kit Lot #

Chip Comments :

Assay Class: High Sensitivity DNA Assay
Data Path: C:\...ents and Settings\Bioanalyzer\2013-01-14\2013-01-14_001.xad

Created: 1/14/2013 10:20:52 AM
Modified: 1/14/2013 11:27:31 AM

Electrophoresis Assay Details

General Analysis Settings

Number of Available Sample and Ladder Wells (Max.) : 12
Minimum Visible Range [s] : 32
Maximum Visible Range [s] : 138
Start Analysis Time Range [s] : 33
End Analysis Time Range [s] : 137.5
Ladder Concentration [pg/μl] : 1950
Uses Standard Area for Ladder Fragments
Lower Marker Concentration [pg/μl] : 125
Upper Marker Concentration [pg/μl] : 75
Used Upper Marker for Quantitation
Standard Curve Fit is Point to Point
Show Data Aligned to Lower and Upper Marker

Integrator Settings

Integration Start Time [s] : 33.05
Integration End Time [s] : 137
Slope Threshold : 0.8
Height Threshold [FU] : 5
Area Threshold : 0.1
Width Threshold [s] : 0.6
Baseline Plateau [s] : 0.5

Filter Settings

Filter Width [s] : 0.5
Polynomial Order : 4

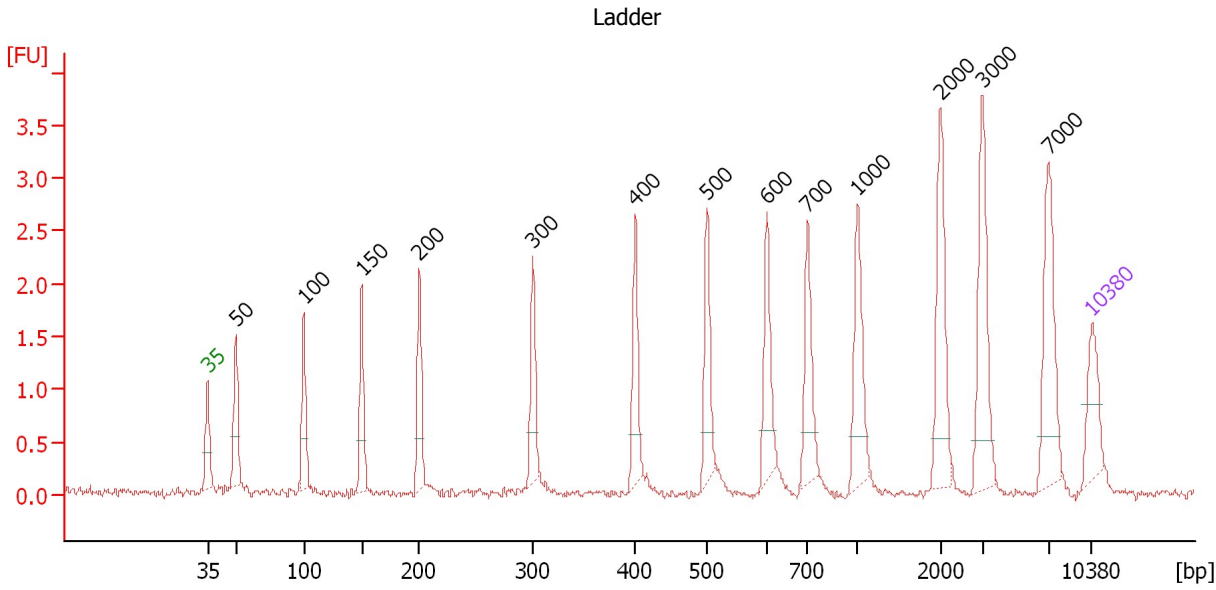
Ladder

Ladder Peak	Size	Area
1	35	160
2	50	210
3	100	208
4	150	221
5	200	242
6	300	270
7	400	305
8	500	306
9	600	336
10	700	321
11	1000	366
12	2000	413
13	3000	411
14	7000	400
15	10380	214

Assay Class: High Sensitivity DNA Assay
 Data Path: C:\...ents and Settings\Bioanalyzer\2013-01-14\2013-01-14_001.xad

Created: 1/14/2013 10:20:52 AM
 Modified: 1/14/2013 11:27:31 AM

Electropherogram Summary



Overall Results for Ladder

Noise: 0.0

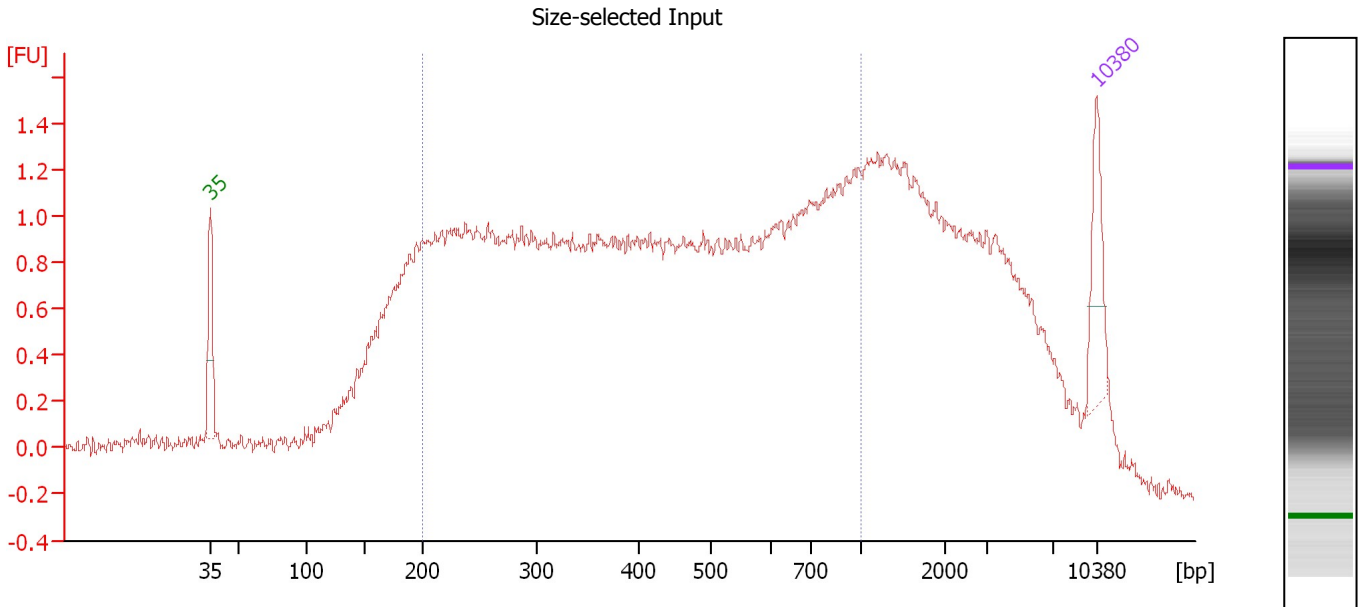
Peak table for Ladder

Peak	Size [bp]	Conc. [pg/µl]	Molarity [pmol/l]	Observations
1	35	125.00	5,411.3	Lower Marker
2	50	150.00	4,545.5	Ladder Peak
3	100	150.00	2,272.7	Ladder Peak
4	150	150.00	1,515.2	Ladder Peak
5	200	150.00	1,136.4	Ladder Peak
6	300	150.00	757.6	Ladder Peak
7	400	150.00	568.2	Ladder Peak
8	500	150.00	454.5	Ladder Peak
9	600	150.00	378.8	Ladder Peak
10	700	150.00	324.7	Ladder Peak
11	1,000	150.00	227.3	Ladder Peak
12	2,000	150.00	113.6	Ladder Peak
13	3,000	150.00	75.8	Ladder Peak
14	7,000	150.00	32.5	Ladder Peak
15	10,380	75.00	10.9	Upper Marker

Assay Class: High Sensitivity DNA Assay
 Data Path: C:\...ents and Settings\Bioanalyzer\2013-01-14\2013-01-14_001.xad

Created: 1/14/2013 10:20:52 AM
 Modified: 1/14/2013 11:27:31 AM

Electropherogram Summary Continued ...



Setpoint Deviations for sample 1 : Size-selected Input

Height Threshold [FU] : 0.2

Overall Results for sample 1 : Size-selected Input

Number of peaks found: 0 Corr. Area 1: 49.9
 Noise: 0.0

Peak table for sample 1 : Size-selected Input

Peak	Size [bp]	Conc. [pg/μl]	Molarity [pmol/l]	Observations
1	35	125.00	5,411.3	Lower Marker
2	10,380	75.00	10.9	Upper Marker

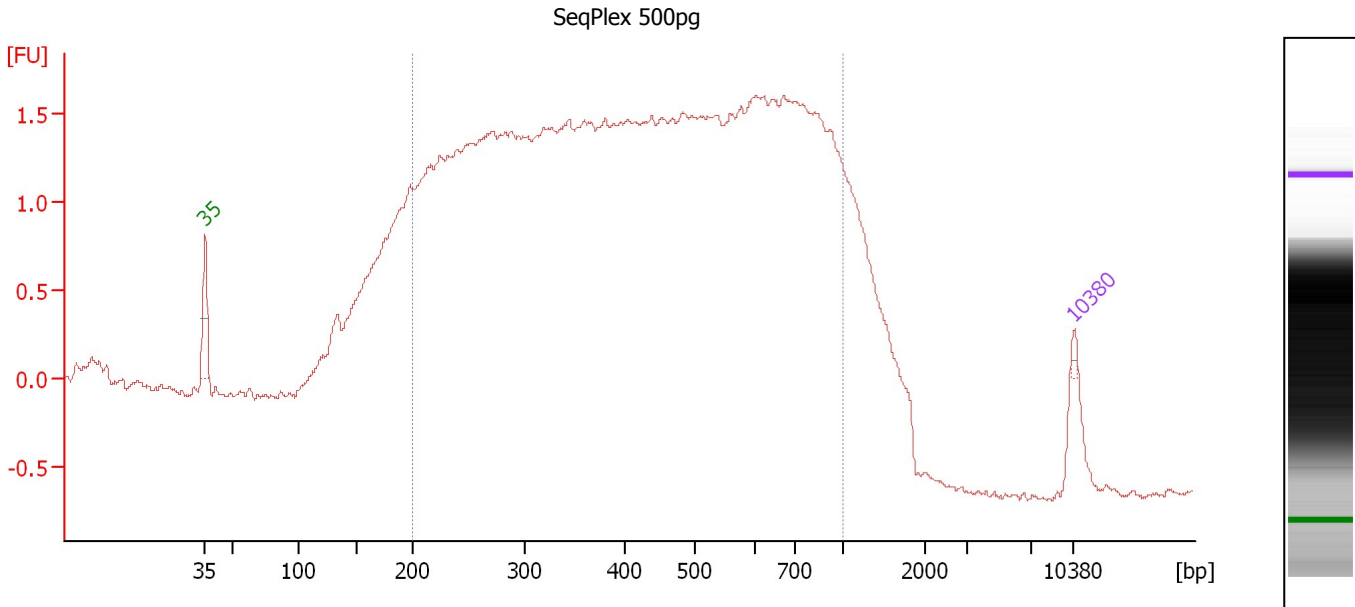
Region table for sample 1 : Size-selected Input

From [bp]	To [bp]	Average Size [bp]	Molarity [pmol/l]	Conc. [pg/μl]	Corr. Area	% of Total	Size distribution in CV [%]	Color
200	1,000	466	20,680.4	4,895.02	49.9	63	43.6	Blue

Assay Class: High Sensitivity DNA Assay
 Data Path: C:\...ents and Settings\Bioanalyzer\2013-01-14\2013-01-14_001.xad

Created: 1/14/2013 10:20:52 AM
 Modified: 1/14/2013 11:27:31 AM

Electropherogram Summary Continued ...



Setpoint Deviations for sample 2 : SeqPlex 500pg

Height Threshold [FU] : 0.1 Filter Width [s] : 1
 Baseline Plateau [s] : 100

Overall Results for sample 2 : SeqPlex 500pg

Number of peaks found: 0 Corr. Area 1: 82.5
 Noise: 0.0

Peak table for sample 2 : SeqPlex 500pg

Peak	Size [bp]	Conc. [pg/μl]	Molarity [pmol/l]	Observations
1	35	125.00	5,411.3	Lower Marker
2	10,380	75.00	10.9	Upper Marker

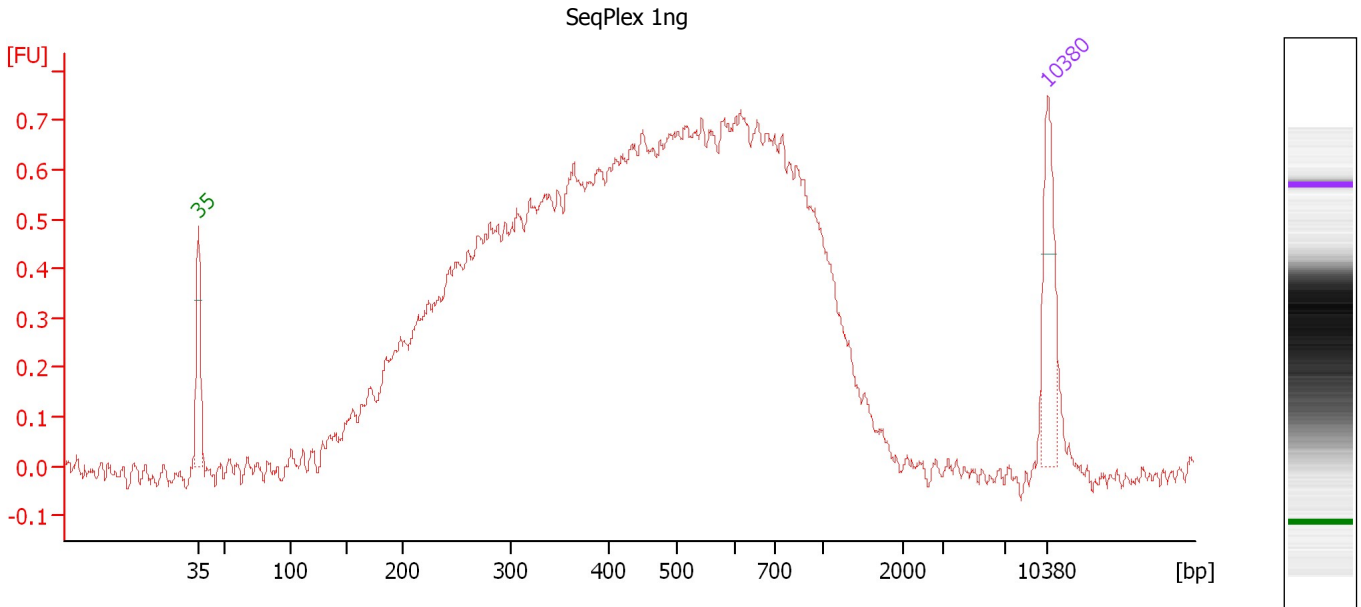
Region table for sample 2 : SeqPlex 500pg

From [bp]	To [bp]	Average Size [bp]	Molarity [pmol/l]	Conc. [pg/μl]	Corr. Area	% of Total	Size distribution in CV [%]	Color
200	1,000	467	335,944.4	81,285.78	82.5	83	41.4	Blue

Assay Class: High Sensitivity DNA Assay
 Data Path: C:\...ents and Settings\Bioanalyzer\2013-01-14\2013-01-14_001.xad

Created: 1/14/2013 10:20:52 AM
 Modified: 1/14/2013 11:27:31 AM

Electropherogram Summary Continued ...



Setpoint Deviations for sample 3 : SeqPlex 1ng

Height Threshold [FU] :	0.2	Baseline Plateau [s] :	100
Width Threshold [s] :	0.2	Filter Width [s] :	1

Overall Results for sample 3 : SeqPlex 1ng

Number of peaks found:	0	Noise:	0.0
------------------------	---	--------	-----

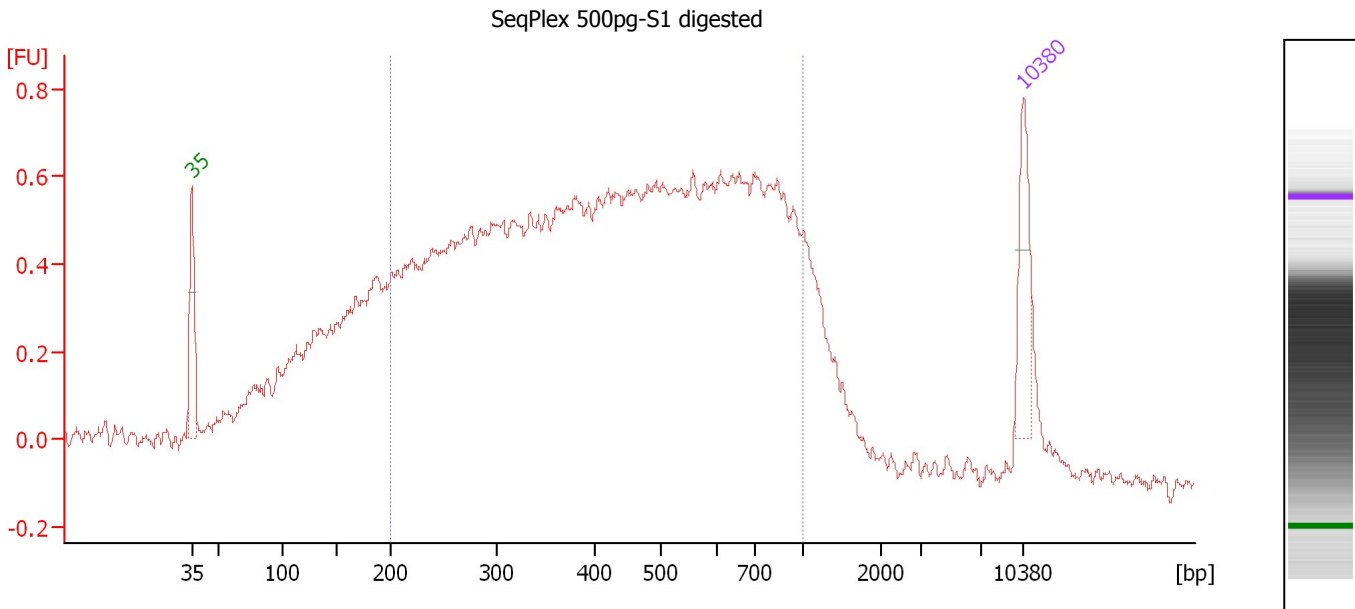
Peak table for sample 3 : SeqPlex 1ng

Peak	Size [bp]	Conc. [pg/μl]	Molarity [pmol/l]	Observations
1	35	125.00	5,411.3	Lower Marker
2	10,380	75.00	10.9	Upper Marker

Assay Class: High Sensitivity DNA Assay
 Data Path: C:\...ents and Settings\Bioanalyzer\2013-01-14\2013-01-14_001.xad

Created: 1/14/2013 10:20:52 AM
 Modified: 1/14/2013 11:27:31 AM

Electropherogram Summary Continued ...



Setpoint Deviations for sample 4 : SeqPlex 500pg-S1 digested

Height Threshold [FU] : 0.2 Filter Width [s] : 1
 Baseline Plateau [s] : 100

Overall Results for sample 4 : SeqPlex 500pg-S1 digested

Number of peaks found: 0 Corr. Area 1: 26.4
 Noise: 0.0

Peak table for sample 4 : SeqPlex 500pg-S1 digested

Peak	Size [bp]	Conc. [pg/μl]	Molarity [pmol/l]	Observations
1	35	125.00	5,411.3	Lower Marker
2	10,380	75.00	10.9	Upper Marker

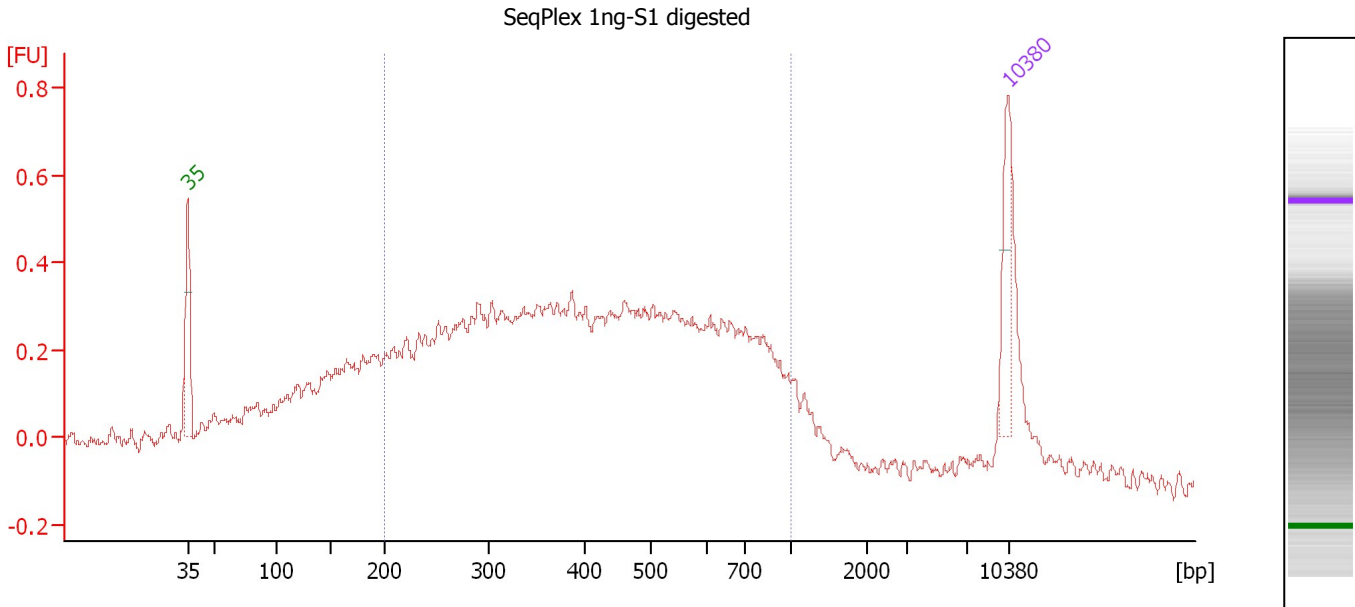
Region table for sample 4 : SeqPlex 500pg-S1 digested

From [bp]	To [bp]	Average Size [bp]	Molarity [pmol/l]	Conc. [pg/μl]	Corr. Area	% of Total	Size distribution in CV [%]	Color
200	1,000	470	16,924.1	4,144.40	26.4	76	40.7	Blue

Assay Class: High Sensitivity DNA Assay
 Data Path: C:\...ents and Settings\Bioanalyzer\2013-01-14\2013-01-14_001.xad

Created: 1/14/2013 10:20:52 AM
 Modified: 1/14/2013 11:27:31 AM

Electropherogram Summary Continued ...



Setpoint Deviations for sample 5 : SeqPlex 1ng-S1 digested

Height Threshold [FU] : 0.2 Filter Width [s] : 1
 Baseline Plateau [s] : 100

Overall Results for sample 5 : SeqPlex 1ng-S1 digested

Number of peaks found: 0 Corr. Area 1: 14.7
 Noise: 0.0

Peak table for sample 5 : SeqPlex 1ng-S1 digested

Peak	Size [bp]	Conc. [pg/μl]	Molarity [pmol/l]	Observations
1	35	125.00	5,411.3	Lower Marker
2	10,380	75.00	10.9	Upper Marker

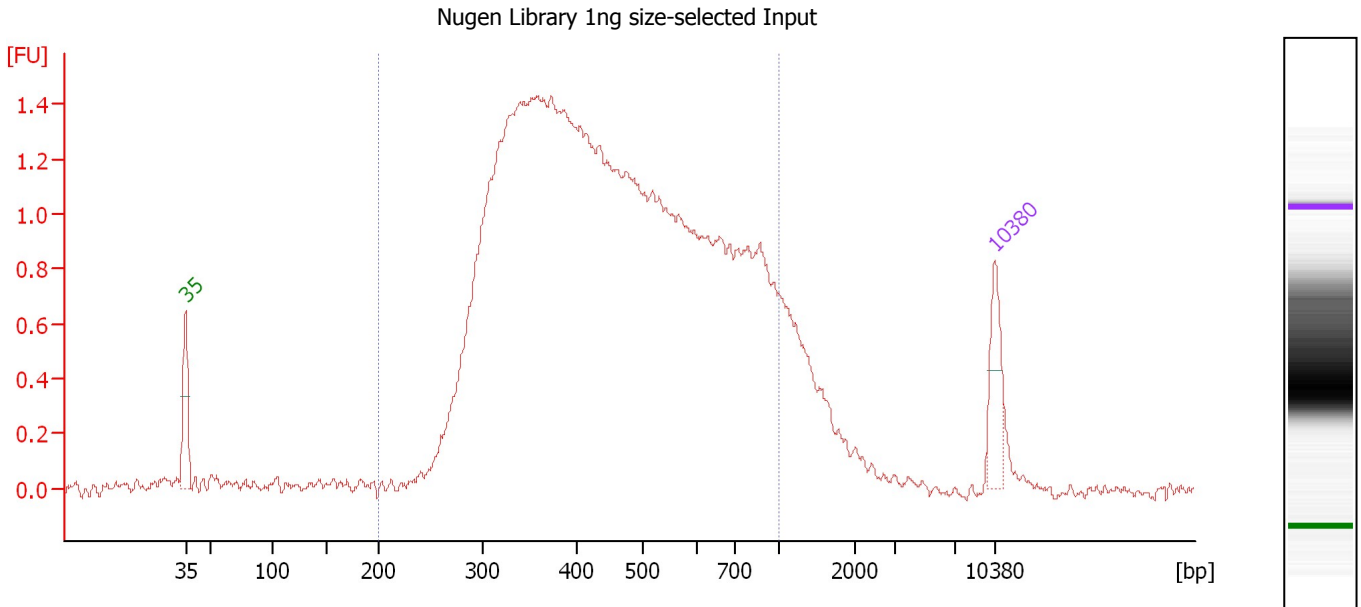
Region table for sample 5 : SeqPlex 1ng-S1 digested

From [bp]	To [bp]	Average Size [bp]	Molarity [pmol/l]	Conc. [pg/μl]	Corr. Area	% of Total	Size distribution in CV [%]	Color
200	1,000	453	11,738.8	2,815.34	14.7	72	40.1	Blue

Assay Class: High Sensitivity DNA Assay
 Data Path: C:\...ents and Settings\Bioanalyzer\2013-01-14\2013-01-14_001.xad

Created: 1/14/2013 10:20:52 AM
 Modified: 1/14/2013 11:27:31 AM

Electropherogram Summary Continued ...



Setpoint Deviations for sample 6 : Nugen Library 1ng size-selected Input

Height Threshold [FU] : 0.2 Filter Width [s] : 1
 Baseline Plateau [s] : 100

Overall Results for sample 6 : Nugen Library 1ng size-selected Input

Number of peaks found: 0 Corr. Area 1: 39.9
 Noise: 0.0

Peak table for sample 6 : Nugen Library 1ng size-selected Input

Peak	Size [bp]	Conc. [pg/µl]	Molarity [pmol/l]	Observations
1	35	125.00	5,411.3	Lower Marker
2	10,380	75.00	10.9	Upper Marker

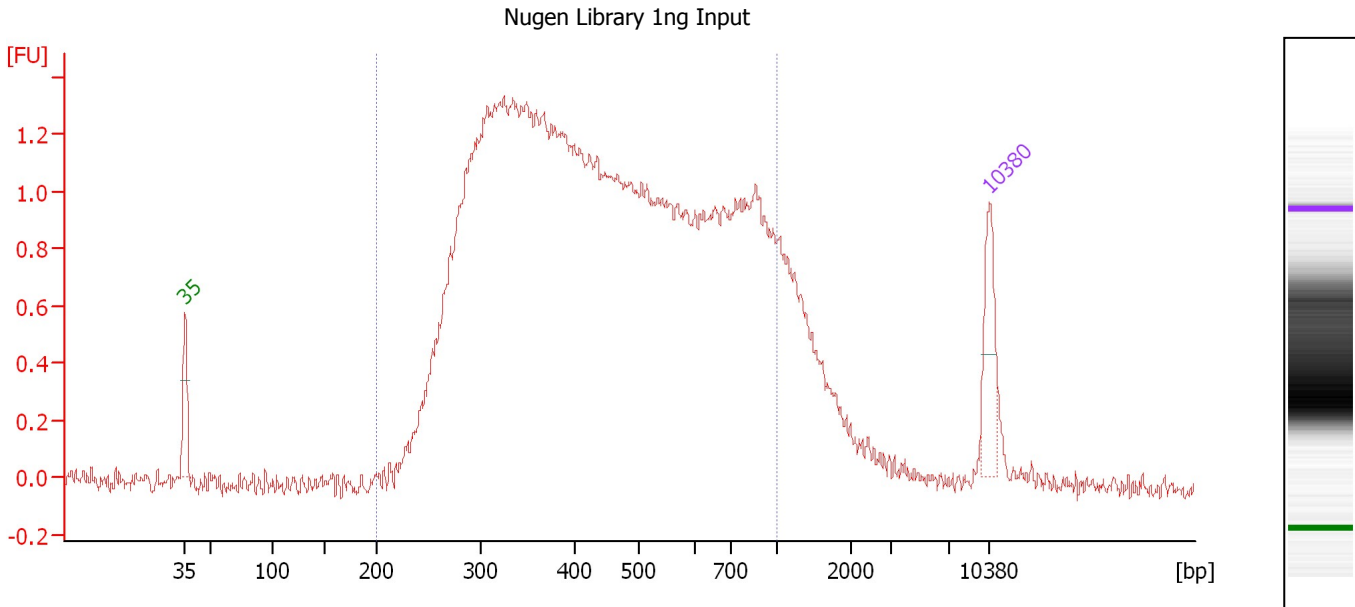
Region table for sample 6 : Nugen Library 1ng size-selected Input

From [bp]	To [bp]	Average Size [bp]	Molarity [pmol/l]	Conc. [pg/µl]	Corr. Area	% of Total	Size distribution in CV [%]	Color
200	1,000	480	20,806.9	5,713.71	39.9	92	34.6	Blue

Assay Class: High Sensitivity DNA Assay
 Data Path: C:\...ents and Settings\Bioanalyzer\2013-01-14\2013-01-14_001.xad

Created: 1/14/2013 10:20:52 AM
 Modified: 1/14/2013 11:27:31 AM

Electropherogram Summary Continued ...



Setpoint Deviations for sample 7 : Nugen Library 1ng Input

Height Threshold [FU] : 0.2 Baseline Plateau [s] : 100

Overall Results for sample 7 : Nugen Library 1ng Input

Number of peaks found: 0 Corr. Area 1: 43.1
 Noise: 0.0

Peak table for sample 7 : Nugen Library 1ng Input

Peak	Size [bp]	Conc. [pg/μl]	Molarity [pmol/l]	Observations
1	35	125.00	5,411.3	Lower Marker
2	10,380	75.00	10.9	Upper Marker

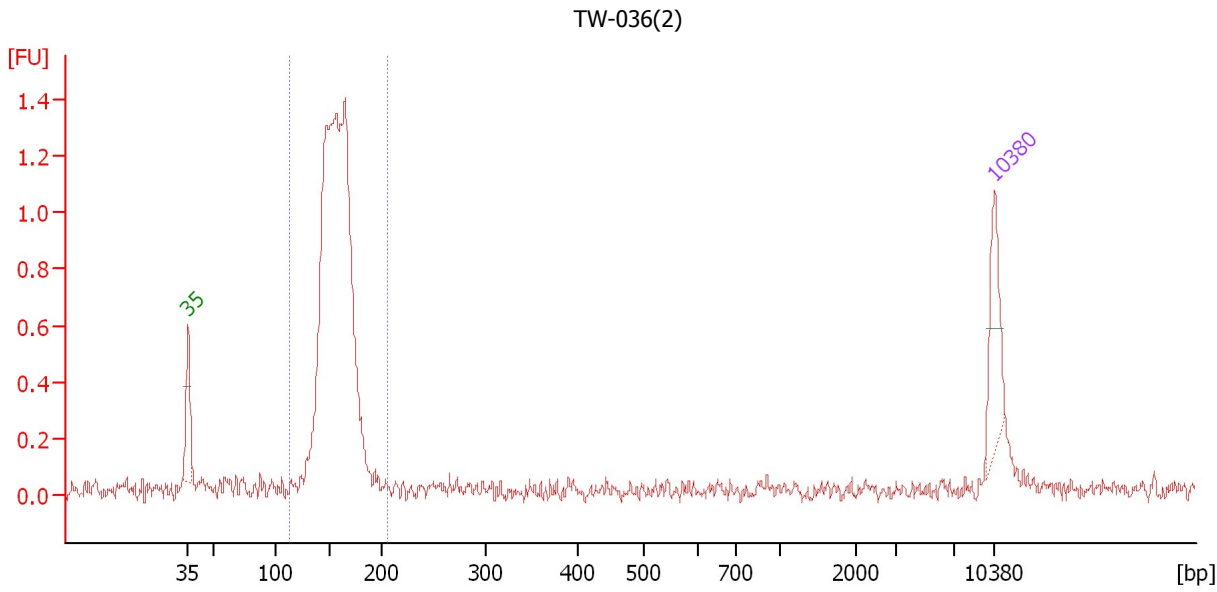
Region table for sample 7 : Nugen Library 1ng Input

From [bp]	To [bp]	Average Size [bp]	Molarity [pmol/l]	Conc. [pg/μl]	Corr. Area	% of Total	Size distribution in CV [%]	Color
200	1,000	473	20,430.1	5,347.45	43.1	89	37.8	Blue

Assay Class: High Sensitivity DNA Assay
 Data Path: C:\...ents and Settings\Bioanalyzer\2013-01-14\2013-01-14_001.xad

Created: 1/14/2013 10:20:52 AM
 Modified: 1/14/2013 11:27:31 AM

Electropherogram Summary Continued ...



Setpoint Deviations for sample 8 : TW-036(2)

Height Threshold [FU] : 0.2

Overall Results for sample 8 : TW-036(2)

Number of peaks found: 0 Corr. Area 1: 8.1
 Noise: 0.0

Peak table for sample 8 : TW-036(2)

Peak	Size [bp]	Conc. [pg/μl]	Molarity [pmol/l]	Observations
1	35	125.00	5,411.3	Lower Marker
2	10,380	75.00	10.9	Upper Marker

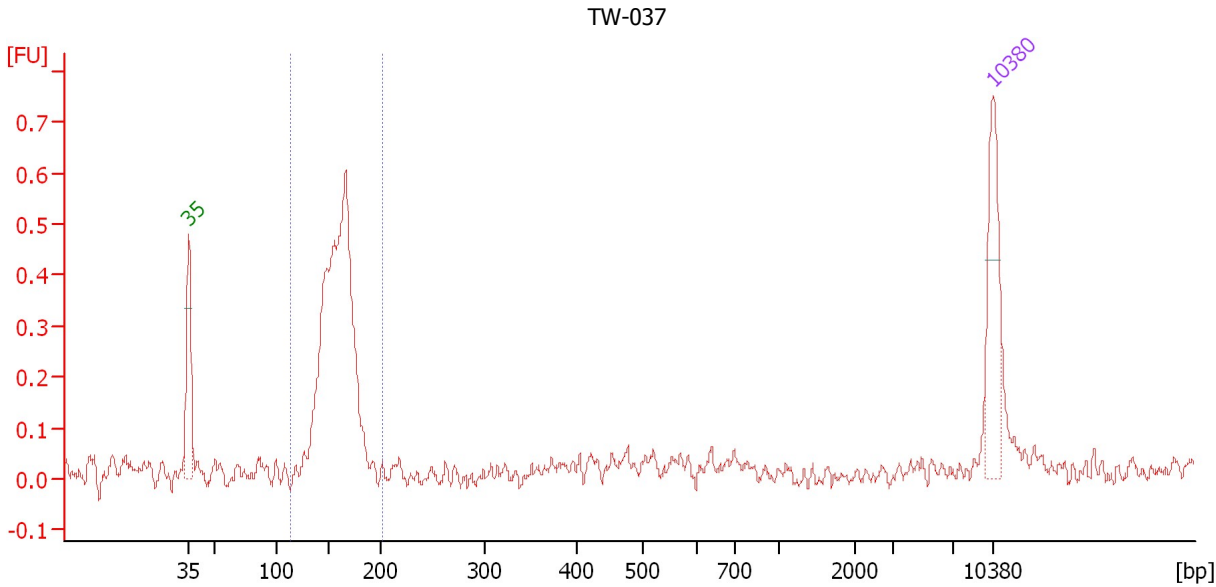
Region table for sample 8 : TW-036(2)

From [bp]	To [bp]	Average Size [bp]	Molarity [pmol/l]	Conc. [pg/μl]	Corr. Area	% of Total	Size distribution in CV [%]	Color
113	206	158	14,214.7	1,471.12	8.1	76	8.2	Blue

Assay Class: High Sensitivity DNA Assay
 Data Path: C:\...ents and Settings\Bioanalyzer\2013-01-14\2013-01-14_001.xad

Created: 1/14/2013 10:20:52 AM
 Modified: 1/14/2013 11:27:31 AM

Electropherogram Summary Continued ...



Setpoint Deviations for sample 9 : TW-037

Height Threshold [FU] : 0.2 Baseline Plateau [s] : 100
 Width Threshold [s] : 0.2 Filter Width [s] : 1

Overall Results for sample 9 : TW-037

Number of peaks found: 0 Corr. Area 1: 2.9
 Noise: 0.0

Peak table for sample 9 : TW-037

Peak	Size [bp]	Conc. [pg/μl]	Molarity [pmol/l]	Observations
1	35	125.00	5,411.3	Lower Marker
2	10,380	75.00	10.9	Upper Marker

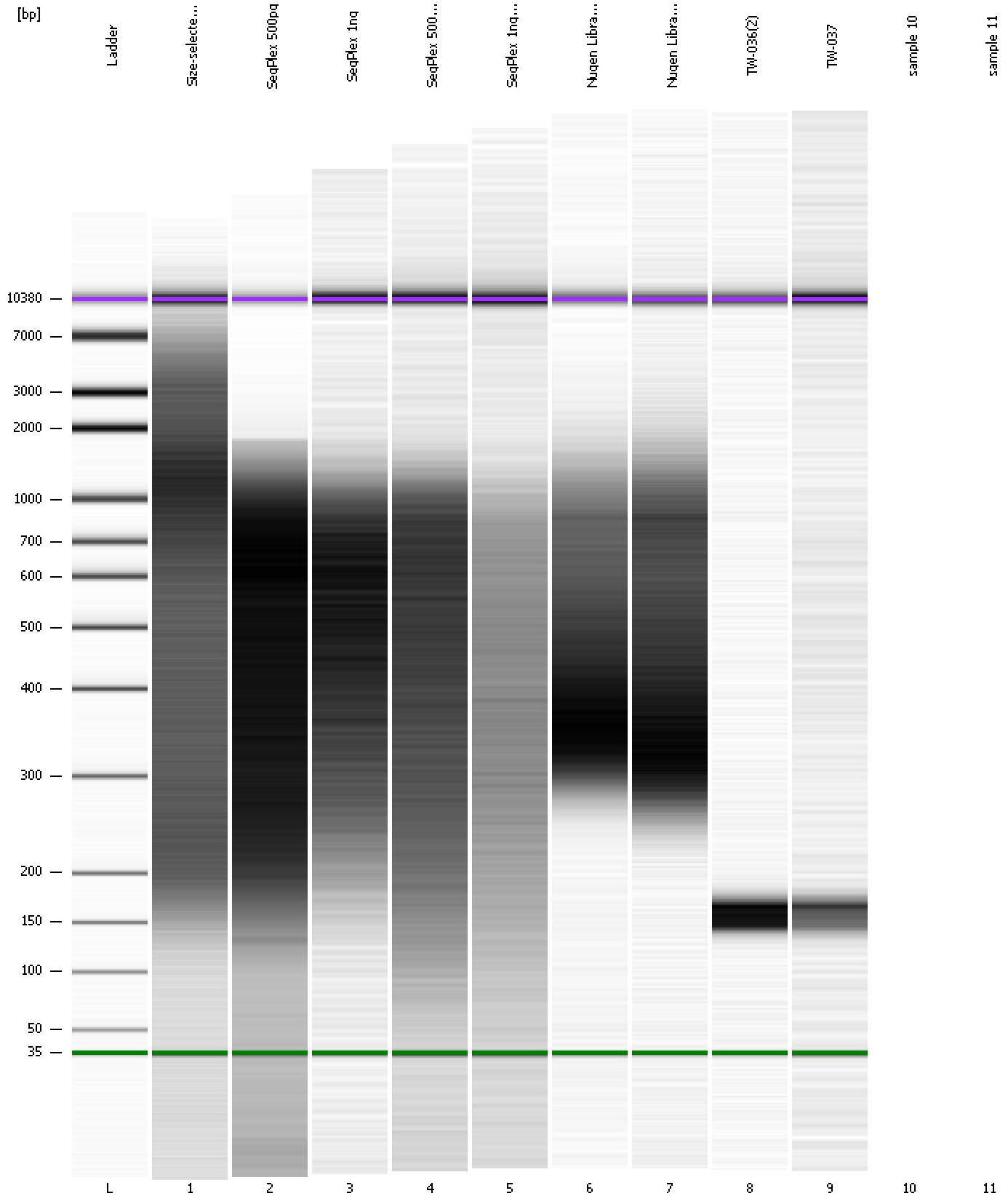
Region table for sample 9 : TW-037

From [bp]	To [bp]	Average Size [bp]	Molarity [pmol/l]	Conc. [pg/μl]	Corr. Area	% of Total	Size distribution in CV [%]	Color
114	201	158	5,987.9	621.73	2.9	77	7.9	Blue

Assay Class: High Sensitivity DNA Assay
Data Path: C:\...ents and Settings\Bioanalyzer\2013-01-14\2013-01-14_001.xad

Created: 1/14/2013 10:20:52 AM
Modified: 1/14/2013 11:27:31 AM

Gel Image



Assay Class: High Sensitivity DNA Assay
Data Path: C:\...ents and Settings\Bioanalyzer\2013-01-14\2013-01-14_001.xad

Created: 1/14/2013 10:20:52 AM
Modified: 1/14/2013 11:27:31 AM

Invalid Samples

Sample 10 has not been run, no results available.

Sample 11 has not been run, no results available.

Assay Class: High Sensitivity DNA Assay
 Data Path: C:\...ents and Settings\Bioanalyzer\2013-01-14\2013-01-14_001.xad

Created: 1/14/2013 10:20:52 AM
 Modified: 1/14/2013 11:27:31 AM

Run Logbook

Description	Number	Source	Category	Sub Category	Time	Time Zone	User	Host
Run ended on port 1 (Number of wells acquired: 10)		Instrument	Run		1/14/2013 10:56:25 AM	(GMT --08:00) Pacific Standard Time	UC Davis	D8XSMGH1
Run started on port 1 (File: C:\Documents and Settings\Bioanalyzer\2013-01-14\2013-01-14_001.xad)		Instrument	Run		1/14/2013 10:20:57 AM	(GMT --08:00) Pacific Standard Time	UC Davis	D8XSMGH1
Product Number : G2938B		Instrument	Run		1/14/2013 10:20:57 AM	(GMT --08:00) Pacific Standard Time	UC Davis	D8XSMGH1
Name :		Instrument	Run		1/14/2013 10:20:57 AM	(GMT --08:00) Pacific Standard Time	UC Davis	D8XSMGH1
Vendor : Agilent Technologies		Instrument	Run		1/14/2013 10:20:57 AM	(GMT --08:00) Pacific Standard Time	UC Davis	D8XSMGH1
Serial# : DE13701086		Instrument	Run		1/14/2013 10:20:57 AM	(GMT --08:00) Pacific Standard Time	UC Davis	D8XSMGH1
Firmware : C.01.069		Instrument	Run		1/14/2013 10:20:57 AM	(GMT --08:00) Pacific Standard Time	UC Davis	D8XSMGH1
Cartridge : Electrode		Instrument	Run		1/14/2013 10:20:57 AM	(GMT --08:00) Pacific Standard Time	UC Davis	D8XSMGH1