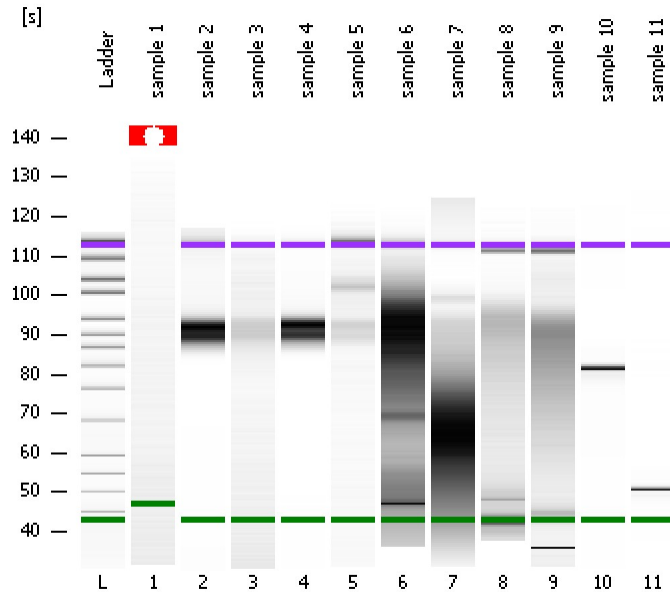


Assay Class: High Sensitivity DNA Assay
Data Path: C:\...ents and Settings\Bioanalyzer\2013-01-22\2013-01-22_001.xad

Created: 1/22/2013 2:18:12 PM
Modified: 1/22/2013 2:59:34 PM

Electrophoresis File Run Summary



Instrument Information:

Instrument Name: DE13701086 Firmware: C.01.069
Serial#: DE13701086 Type: G2938B

Assay Information:

Assay Origin Path: C:\Program Files\Agilent\2100 bioanalyzer\2100 expert\assays\dsDNA\High Sensitivity DNA.xsy
Assay Class: High Sensitivity DNA Assay
Version: 1.03
Assay Comments: Copyright © 2003-2010 Agilent Technologies

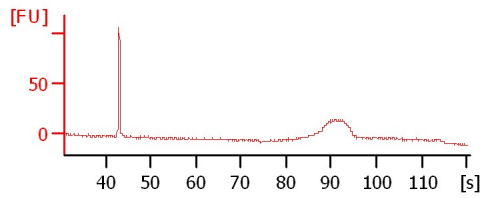
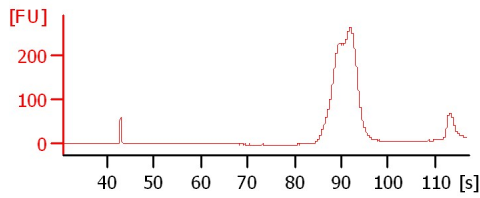
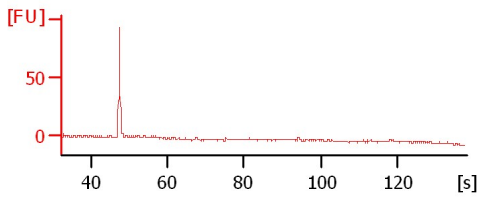
Chip Information:

Chip Lot #: Reagent Kit Lot #: Chip Comments:

sample 1

sample 2

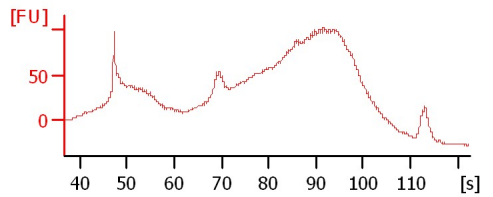
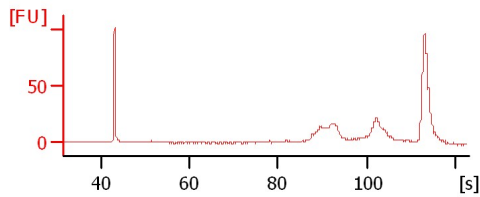
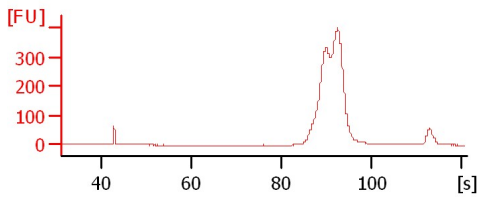
sample 3



sample 4

sample 5

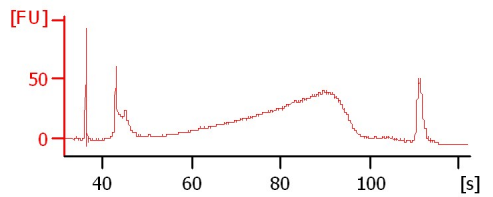
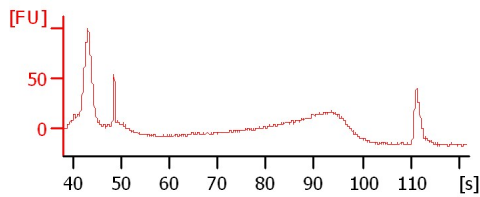
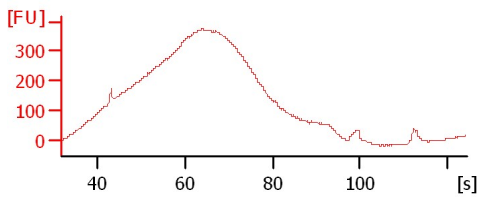
sample 6



sample 7

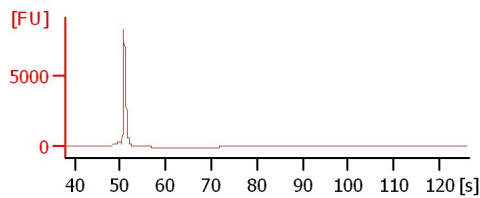
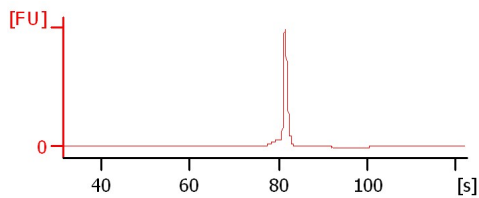
sample 8

sample 9



sample 10

sample 11



Assay Class: High Sensitivity DNA Assay
 Data Path: C:\...ents and Settings\Bioanalyzer\2013-01-22\2013-01-22_001.xad

Created: 1/22/2013 2:18:12 PM
 Modified: 1/22/2013 2:59:34 PM

Electrophoresis File Run Summary (Chip Summary)

Sample Name	Sample Comment	Rest. Digest	Status	Observation	Result Label	Result Color
sample 1		<input type="checkbox"/>	✓			
sample 2		<input type="checkbox"/>	✓			
sample 3		<input type="checkbox"/>	✓			
sample 4		<input type="checkbox"/>	✓			
sample 5		<input type="checkbox"/>	✓			
sample 6		<input type="checkbox"/>	✓			
sample 7		<input type="checkbox"/>	✓			
sample 8		<input type="checkbox"/>	✓			
sample 9		<input type="checkbox"/>	✓			
sample 10		<input type="checkbox"/>	✓			
sample 11		<input type="checkbox"/>	✓			
Ladder		<input type="checkbox"/>	✓			

Chip Lot #

Reagent Kit Lot #

Chip Comments :

Assay Class: High Sensitivity DNA Assay
Data Path: C:\...ents and Settings\Bioanalyzer\2013-01-22\2013-01-22_001.xad

Created: 1/22/2013 2:18:12 PM
Modified: 1/22/2013 2:59:34 PM

Electrophoresis Assay Details

General Analysis Settings

Number of Available Sample and Ladder Wells (Max.) : 12
Minimum Visible Range [s] : 32
Maximum Visible Range [s] : 138
Start Analysis Time Range [s] : 33
End Analysis Time Range [s] : 137.5
Ladder Concentration [pg/ μ l] : 1950
Uses Standard Area for Ladder Fragments
Lower Marker Concentration [pg/ μ l] : 125
Upper Marker Concentration [pg/ μ l] : 75
Used Upper Marker for Quantitation
Standard Curve Fit is Point to Point
Show Data Aligned to Lower and Upper Marker

Integrator Settings

Integration Start Time [s] : 33.05
Integration End Time [s] : 137
Slope Threshold : 0.8
Height Threshold [FU] : 5
Area Threshold : 0.1
Width Threshold [s] : 0.6
Baseline Plateau [s] : 0.5

Filter Settings

Filter Width [s] : 0.5
Polynomial Order : 4

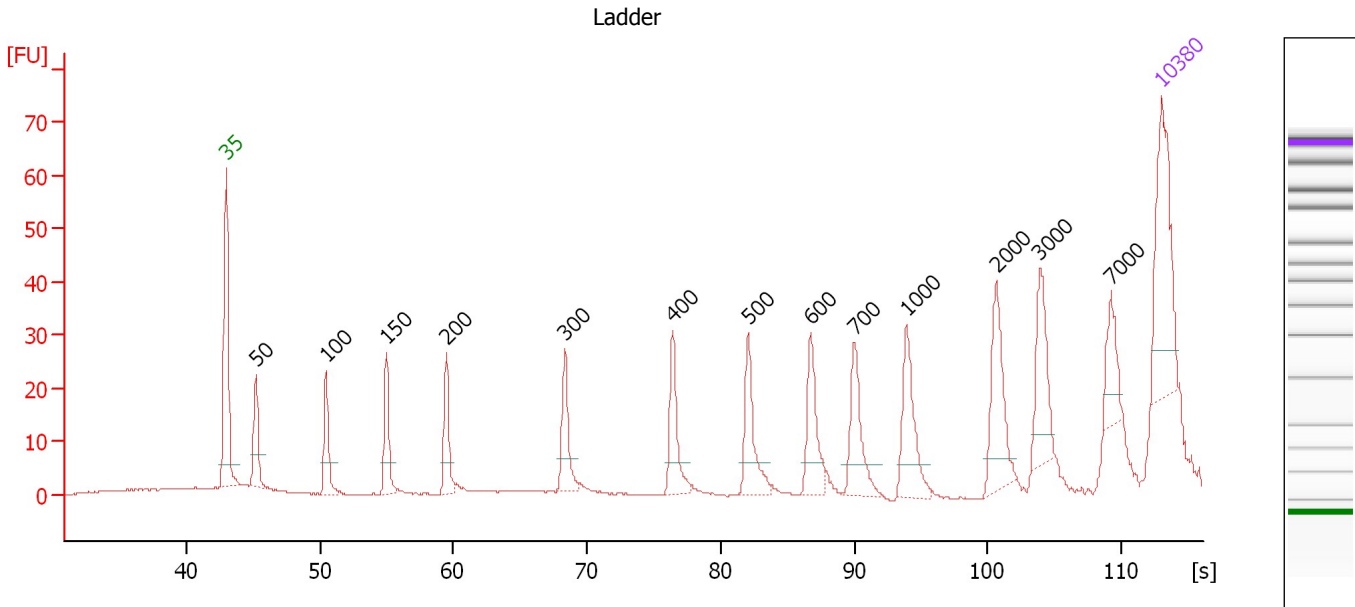
Ladder

Ladder Peak	Size	Area
1	35	160
2	50	210
3	100	208
4	150	221
5	200	242
6	300	270
7	400	305
8	500	306
9	600	336
10	700	321
11	1000	366
12	2000	413
13	3000	411
14	7000	400
15	10380	214

Assay Class: High Sensitivity DNA Assay
 Data Path: C:\...ents and Settings\Bioanalyzer\2013-01-22\2013-01-22_001.xad

Created: 1/22/2013 2:18:12 PM
 Modified: 1/22/2013 2:59:34 PM

Electropherogram Summary



Overall Results for Ladder

Noise: 0.1

Peak table for Ladder

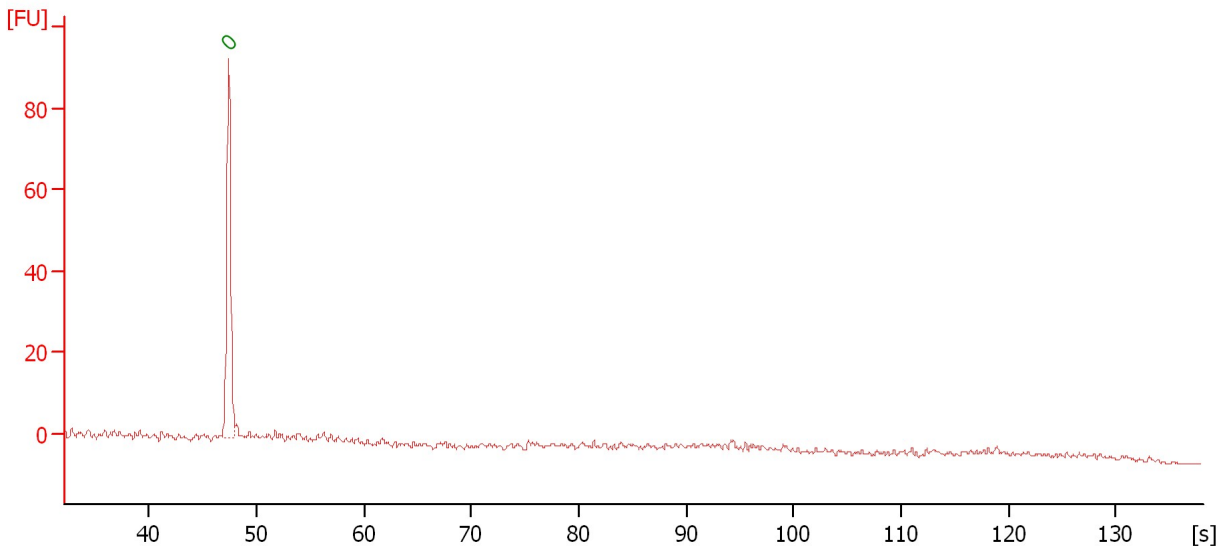
Peak	Size [bp]	Conc. [pg/μl]	Molarity [pmol/l]	Observations
1	35	125.00	5,411.3	Lower Marker
2	50	150.00	4,545.5	Ladder Peak
3	100	150.00	2,272.7	Ladder Peak
4	150	150.00	1,515.2	Ladder Peak
5	200	150.00	1,136.4	Ladder Peak
6	300	150.00	757.6	Ladder Peak
7	400	150.00	568.2	Ladder Peak
8	500	150.00	454.5	Ladder Peak
9	600	150.00	378.8	Ladder Peak
10	700	150.00	324.7	Ladder Peak
11	1,000	150.00	227.3	Ladder Peak
12	2,000	150.00	113.6	Ladder Peak
13	3,000	150.00	75.8	Ladder Peak
14	7,000	150.00	32.5	Ladder Peak
15	10,380	75.00	10.9	Upper Marker

Assay Class: High Sensitivity DNA Assay
Data Path: C:\...ents and Settings\Bioanalyzer\2013-01-22\2013-01-22_001.xad

Created: 1/22/2013 2:18:12 PM
Modified: 1/22/2013 2:59:34 PM

Electropherogram Summary Continued ...

sample 1



Overall Results for sample 1 : sample 1

Number of peaks found: 0 Noise: 0.3

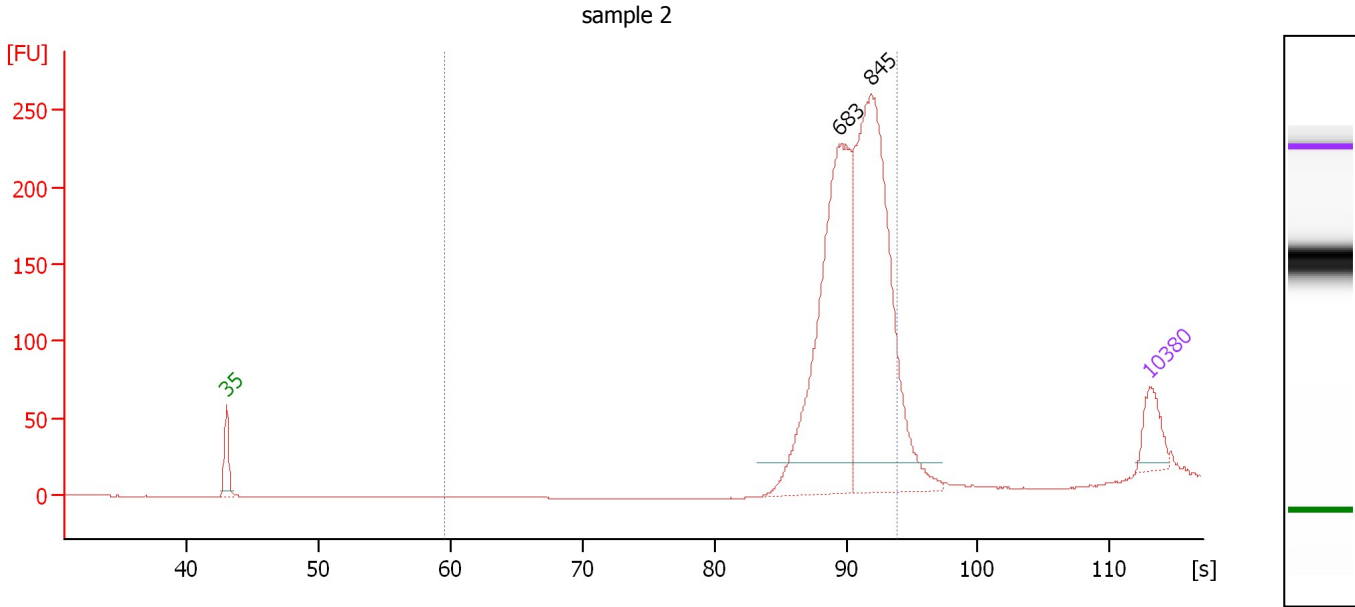
Peak table for sample 1 : sample 1

Peak	Size [bp]	Conc. [pg/μl]	Molarity [pmol/l]	Observations
1	0	0.00	0.0	Lower Marker

Assay Class: High Sensitivity DNA Assay
 Data Path: C:\...ents and Settings\Bioanalyzer\2013-01-22\2013-01-22_001.xad

Created: 1/22/2013 2:18:12 PM
 Modified: 1/22/2013 2:59:34 PM

Electropherogram Summary Continued ...



Setpoint Deviations for sample 2 : sample 2

Height Threshold [FU] : 20

Overall Results for sample 2 : sample 2

Number of peaks found: 2 Corr. Area 1: 1,514.9
 Noise: 0.1

Peak table for sample 2 : sample 2

Peak	Size [bp]	Conc. [pg/µl]	Molarity [pmol/l]	Observations
1	35	125.00	5,411.3	Lower Marker
2	683	1,023.61	2,272.0	
3	845	1,163.39	2,087.0	
4	10,380	75.00	10.9	Upper Marker

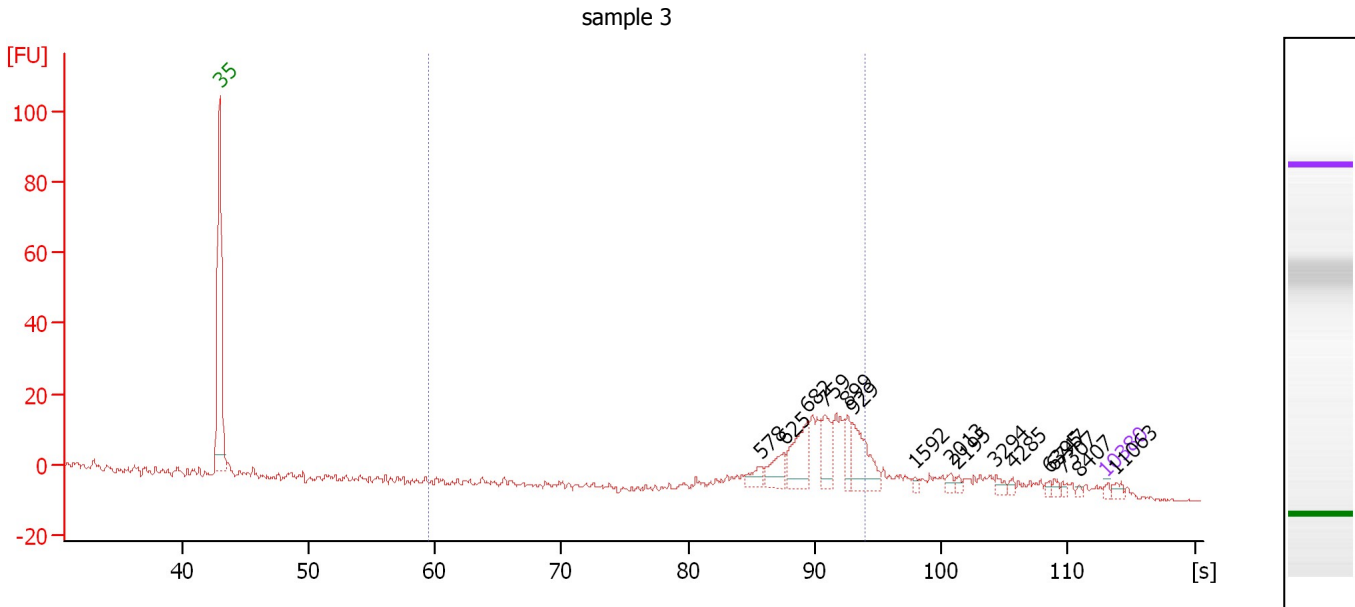
Region table for sample 2 : sample 2

From [bp]	To [bp]	Average Size [bp]	Molarity [pmol/l]	Conc. [pg/µl]	Corr. Area	% of Total	Size distribution in CV [%]	Color
200	1,000	767	3,863.6	1,917.86	1,514.9	95	14.3	Blue

Assay Class: High Sensitivity DNA Assay
 Data Path: C:\...ents and Settings\Bioanalyzer\2013-01-22\2013-01-22_001.xad

Created: 1/22/2013 2:18:12 PM
 Modified: 1/22/2013 2:59:34 PM

Electropherogram Summary Continued ...



Setpoint Deviations for sample 3 : sample 3

Height Threshold [FU] : 3

Overall Results for sample 3 : sample 3

Number of peaks found: 16 Corr. Area 1: 155.8
 Noise: 0.4

Peak table for sample 3 : sample 3

Peak	Size [bp]	Conc. [pg/μl]	Molarity [pmol/l]	Observations
1	35	125.00	5,411.3	Lower Marker
2	578	387.48	1,015.6	
3	625	785.50	1,905.5	
4	682	1,622.57	3,605.2	
5	759	1,087.02	2,169.6	
6	899	593.47	999.7	
7	929	1,505.85	2,456.4	
8	1,592	96.82	92.2	
9	2,013	156.91	118.1	
10	2,195	99.42	68.6	
11	3,294	161.46	74.3	
12	4,285	106.57	37.7	
13	6,395	95.23	22.6	
14	6,747	106.65	23.9	
15	7,307	79.77	16.5	
16	8,407	58.35	10.5	
17	10,380	75.00	10.9	Upper Marker
18	11,063	0.00	0.0	

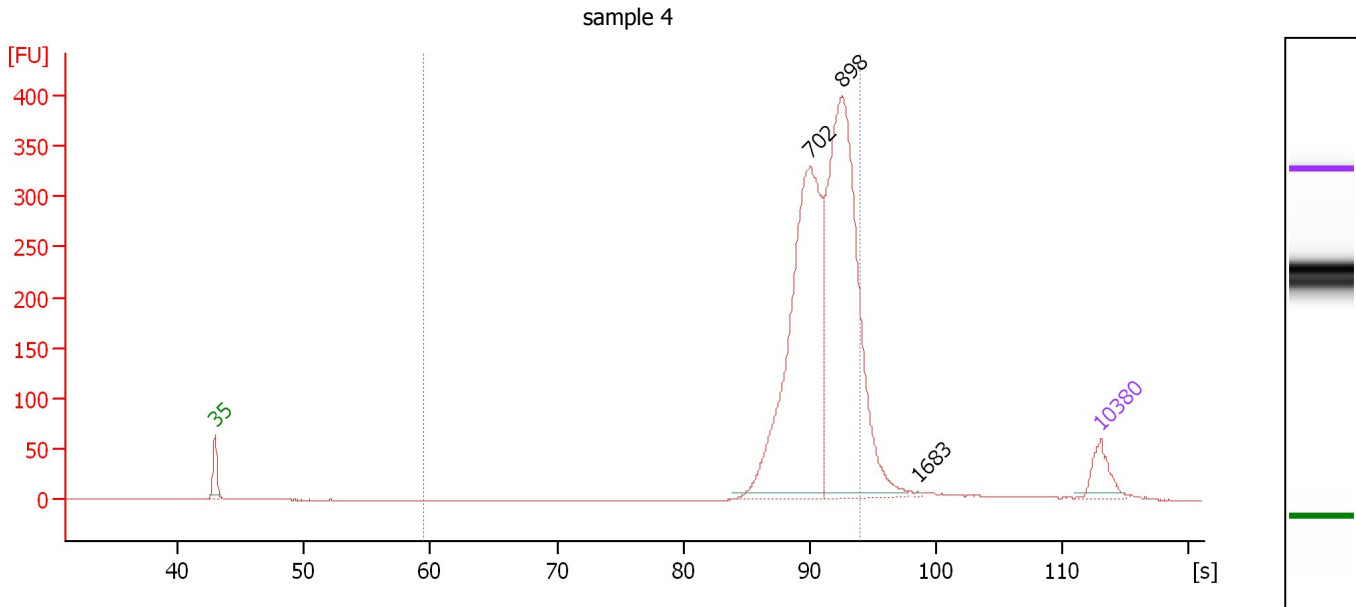
Region table for sample 3 : sample 3

From [bp]	To [bp]	Average Size [bp]	Molarity [pmol/l]	Conc. [pg/μl]	Corr. Area	% of Total	Size distribution in CV [%]	Color
200	1,000	747	16,369.0	7,811.52	155.8	64	17.2	Blue

Assay Class: High Sensitivity DNA Assay
 Data Path: C:\...ents and Settings\Bioanalyzer\2013-01-22\2013-01-22_001.xad

Created: 1/22/2013 2:18:12 PM
 Modified: 1/22/2013 2:59:34 PM

Electropherogram Summary Continued ...



Overall Results for sample 4 : sample 4

Number of peaks found: 3 Corr. Area 1: 2,239.9
 Noise: 0.2

Peak table for sample 4 : sample 4

Peak	Size [bp]	Conc. [pg/μl]	Molarity [pmol/l]	Observations
1	35	125.00	5,411.3	Lower Marker
2	702	1,391.65	3,005.7	
3	898	1,416.58	2,391.3	
4	1,683	3.04	2.7	
5	10,380	75.00	10.9	Upper Marker

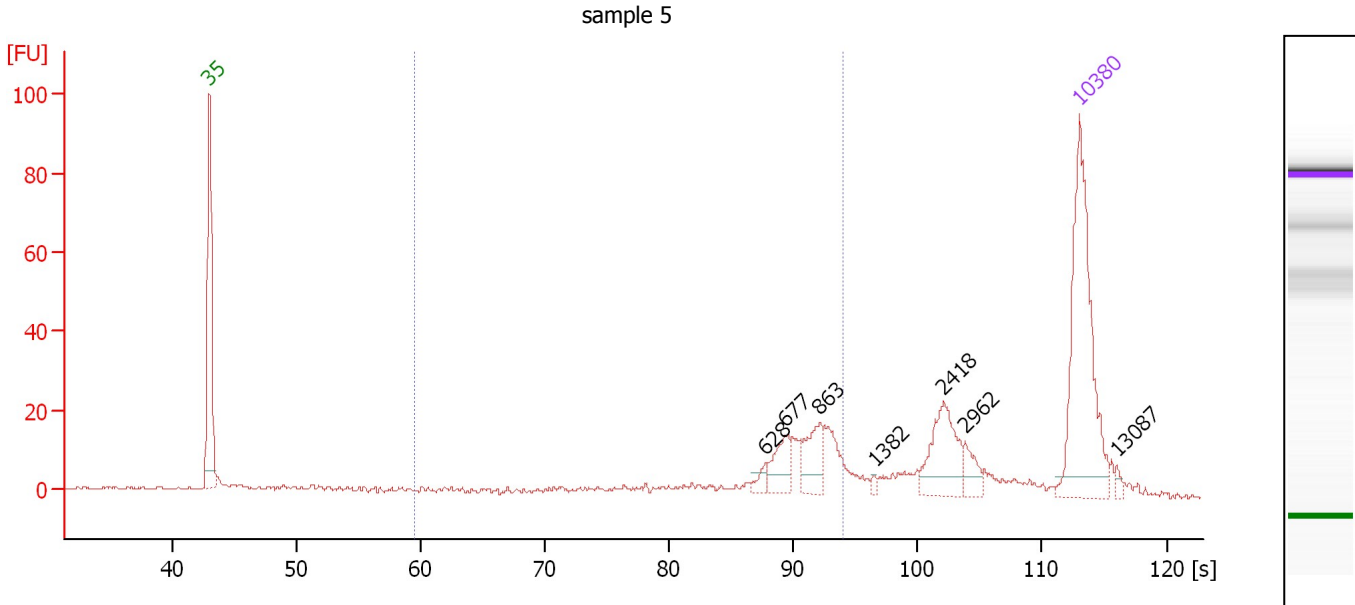
Region table for sample 4 : sample 4

From [bp]	To [bp]	Average Size [bp]	Molarity [pmol/l]	Conc. [pg/μl]	Corr. Area	% of Total	Size distribution in CV [%]	Color
200	1,000	784	5,076.2	2,571.94	2,239.9	88	14.6	Blue

Assay Class: High Sensitivity DNA Assay
 Data Path: C:\...ents and Settings\Bioanalyzer\2013-01-22\2013-01-22_001.xad

Created: 1/22/2013 2:18:12 PM
 Modified: 1/22/2013 2:59:34 PM

Electropherogram Summary Continued ...



Overall Results for sample 5 : sample 5

Number of peaks found: 7 Corr. Area 1: 132.1
 Noise: 0.2

Peak table for sample 5 : sample 5

Peak	Size [bp]	Conc. [pg/μl]	Molarity [pmol/l]	Observations
1	35	125.00	5,411.3	Lower Marker
2	628	4.86	11.7	
3	677	16.78	37.5	
4	863	19.77	34.7	
5	1,382	1.52	1.7	
6	2,418	28.86	18.1	
7	2,962	8.31	4.2	
8	10,380	75.00	10.9	Upper Marker
9	13,087	0.00	0.0	

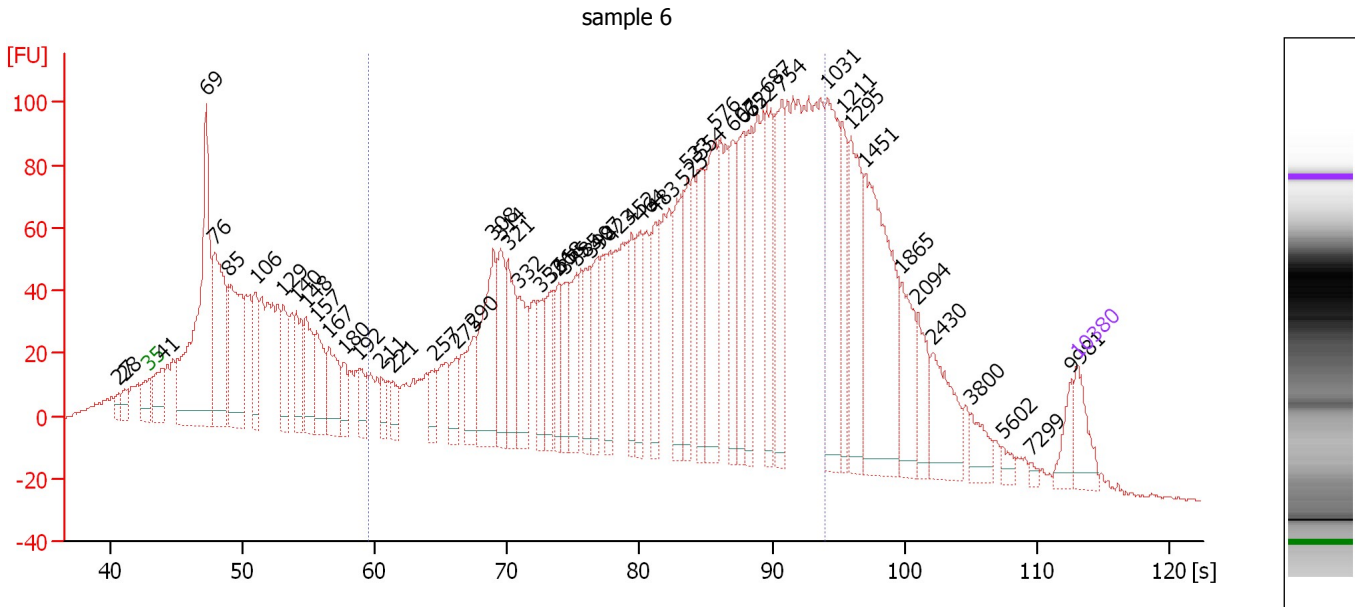
Region table for sample 5 : sample 5

From [bp]	To [bp]	Average Size [bp]	Molarity [pmol/l]	Conc. [pg/μl]	Corr. Area	% of Total	Size distribution in CV [%]	Color
200	1,000	711	214.3	86.79	132.1	45	25.0	Blue

Assay Class: High Sensitivity DNA Assay
 Data Path: C:\...ents and Settings\Bioanalyzer\2013-01-22\2013-01-22_001.xad

Created: 1/22/2013 2:18:12 PM
 Modified: 1/22/2013 2:59:34 PM

Electropherogram Summary Continued ...



Overall Results for sample 6 : sample 6

Number of peaks found: 54 Corr. Area 1: 3,213.0
 Noise: 0.8

Peak table for sample 6 : sample 6

Peak	Size [bp]	Conc. [pg/μl]	Molarity [pmol/l]	Observations
1	27	0.00	0.0	
2	28	0.00	0.0	
3	35	125.00	5,411.3	Lower Marker
4	41	151.74	5,578.7	
5	69	979.86	21,388.8	
6	76	503.15	10,037.0	
7	85	450.47	8,012.1	
8	106	179.73	2,578.2	
9	129	174.36	2,047.4	
10	140	179.36	1,943.5	
11	148	183.13	1,875.7	
12	157	186.50	1,800.6	
13	167	177.94	1,611.6	
14	180	77.49	652.7	
15	192	75.16	591.6	
16	211	55.14	395.7	
17	221	58.25	399.0	
18	257	76.89	453.4	
19	275	85.69	471.6	
20	290	127.81	667.9	
21	308	331.28	1,632.0	
22	314	166.93	805.3	
23	321	190.95	901.0	
24	332	161.54	738.1	
25	352	110.79	476.6	
26	361	113.38	476.2	

Assay Class: High Sensitivity DNA Assay
 Data Path: C:\...ents and Settings\Bioanalyzer\2013-01-22\2013-01-22_001.xad


Created: 1/22/2013 2:18:12 PM
 Modified: 1/22/2013 2:59:34 PM

Electropherogram Summary Continued ...

... Peak table for sample 6 : sample 6

Peak	Size [bp]	Conc. [pg/µl]	Molarity [pmol/l]	Observations
27	368	101.72	418.5	
28	375	110.39	446.3	
29	385	119.06	468.8	
30	398	114.66	436.1	
31	407	126.58	471.3	
32	423	113.02	404.5	
33	452	119.84	401.7	
34	464	139.03	453.9	
35	483	141.89	444.7	
36	525	210.18	606.5	
37	533	136.74	388.8	
38	554	150.86	412.8	
39	576	276.30	726.4	
40	607	154.85	386.4	
41	632	181.25	434.5	
42	652	184.30	428.3	
43	687	220.39	486.2	
44	754	239.56	481.2	
45	1,031	311.09	457.1	
46	1,211	132.48	165.7	
47	1,295	233.81	273.5	
48	1,451	454.16	474.2	
49	1,865	129.85	105.5	
50	2,094	88.40	64.0	
51	2,430	141.67	88.3	
52	3,800	55.29	22.0	
53	5,602	18.84	5.1	
54	7,299	9.00	1.9	
55	9,981	43.36	6.6	
56	10,380	75.00	10.9	Upper Marker

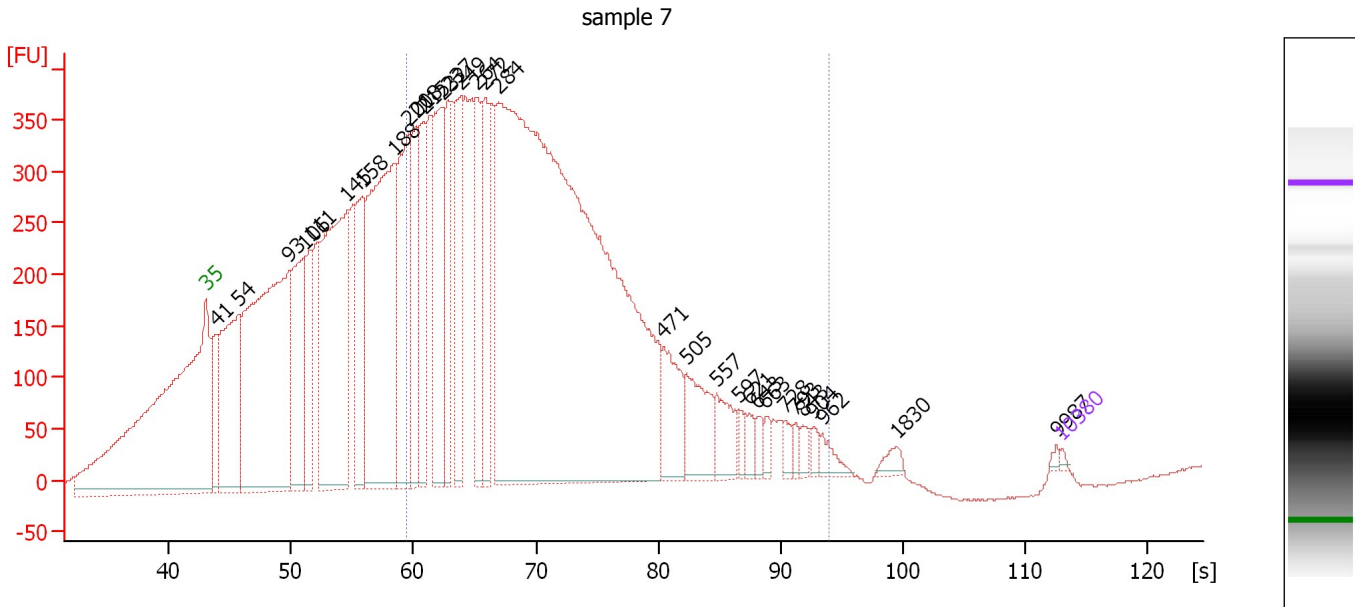
Region table for sample 6 : sample 6

From [bp]	To [bp]	Average Size [bp]	Molarity [pmol/l]	Conc. [pg/µl]	Corr. Area	% of Total	Size distribution in CV [%]	Color
200	1,000	544	24,791.5	7,175.52	3,213.0	57	36.2	

Assay Class: High Sensitivity DNA Assay
 Data Path: C:\...ents and Settings\Bioanalyzer\2013-01-22\2013-01-22_001.xad

Created: 1/22/2013 2:18:12 PM
 Modified: 1/22/2013 2:59:34 PM

Electropherogram Summary Continued ...



Overall Results for sample 7 : sample 7

Number of peaks found: 31 Corr. Area 1: 10,376.9
 Noise: 1.4

Peak table for sample 7 : sample 7

Peak	Size [bp]	Conc. [pg/μl]	Molarity [pmol/l]	Observations
1	35	125.00	5,411.3	Lower Marker
2	41	3,500.89	128,001.2	
3	54	11,071.01	310,231.3	
4	93	26,234.96	426,139.0	
5	106	8,206.92	116,991.3	
6	111	4,221.84	57,541.9	
7	145	17,827.73	185,880.1	
8	158	6,475.10	61,901.2	
9	188	19,034.27	153,596.5	
10	201	8,610.39	64,920.8	
11	208	6,066.77	44,106.9	
12	215	4,636.50	32,695.4	
13	232	7,767.80	50,784.5	
14	237	4,614.88	29,476.3	
15	249	5,570.41	33,944.6	
16	264	4,673.25	26,816.7	
17	272	4,562.55	25,416.4	
18	284	69,537.17	371,100.7	
19	471	2,979.26	9,582.6	
20	505	3,029.07	9,082.0	
21	557	1,685.96	4,584.9	
22	597	470.11	1,193.7	
23	621	538.90	1,315.0	
24	643	455.11	1,073.2	
25	663	445.59	1,018.7	
26	728	489.10	1,017.4	

Assay Class: High Sensitivity DNA Assay
 Data Path: C:\...ents and Settings\Bioanalyzer\2013-01-22\2013-01-22_001.xad


Created: 1/22/2013 2:18:12 PM
 Modified: 1/22/2013 2:59:34 PM

Electropherogram Summary Continued ...

... Peak table for sample 7 : sample 7

Peak	Size [bp]	Conc. [pg/μl]	Molarity [pmol/l]	Observations
27	793	327.68	626.4	
28	843	439.86	790.3	
29	904	361.82	606.3	
30	962	584.82	921.5	
31	1,830	372.56	308.4	
32	9,987	114.68	17.4	
33	▶ 10,380	75.00	10.9	Upper Marker

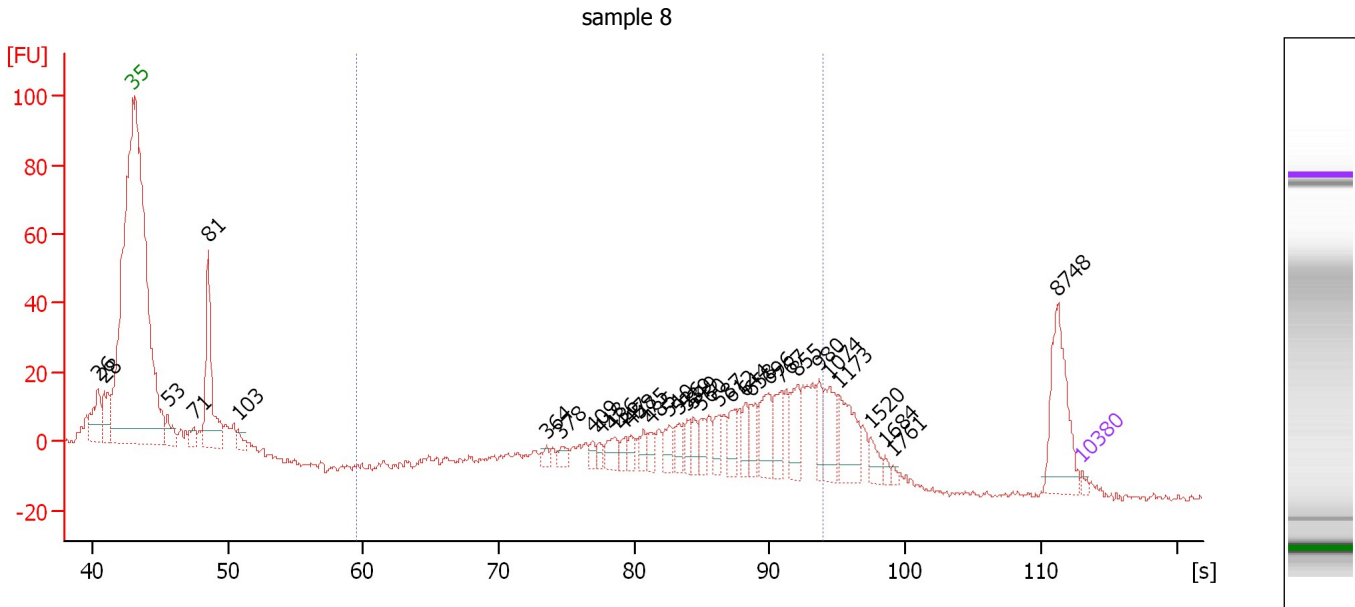
Region table for sample 7 : sample 7

From [bp]	To [bp]	Average Size [bp]	Molarity [pmol/l]	Conc. [pg/μl]	Corr. Area	% of Total	Size distribution in CV [%]	Color
200	1,000	342	624,998.8	123,359.53	10,376.9	59	37.1	

Assay Class: High Sensitivity DNA Assay
 Data Path: C:\...ents and Settings\Bioanalyzer\2013-01-22\2013-01-22_001.xad

Created: 1/22/2013 2:18:12 PM
 Modified: 1/22/2013 2:59:34 PM

Electropherogram Summary Continued ...



Overall Results for sample 8 : sample 8

Number of peaks found: 34 Corr. Area 1: 428.0
 Noise: 0.9

Peak table for sample 8 : sample 8

Peak	Size [bp]	Conc. [pg/μl]	Molarity [pmol/l]	Observations
1	26	0.00	0.0	
2	28	0.00	0.0	
3	35	125.00	5,411.3	Lower Marker
4	53	652.92	18,764.2	
5	71	346.32	7,372.8	
6	81	3,477.81	64,786.6	
7	103	270.37	3,983.8	
8	364	154.46	643.0	
9	378	235.55	944.9	
10	409	167.14	619.5	
11	418	169.63	615.0	
12	436	420.00	1,459.4	
13	447	220.34	746.4	
14	458	234.84	776.1	
15	475	303.41	967.3	
16	485	262.22	819.1	
17	510	375.91	1,117.1	
18	526	403.45	1,162.1	
19	539	303.34	853.1	
20	549	306.53	846.0	
21	560	335.20	906.9	
22	587	368.11	949.8	
23	612	448.52	1,110.1	
24	644	377.48	888.3	
25	658	388.21	893.3	
26	696	856.90	1,864.9	

Assay Class: High Sensitivity DNA Assay
 Data Path: C:\...ents and Settings\Bioanalyzer\2013-01-22\2013-01-22_001.xad

Created: 1/22/2013 2:18:12 PM
 Modified: 1/22/2013 2:59:34 PM

Electropherogram Summary Continued ...

... Peak table for sample 8 : sample 8

Peak	Size [bp]	Conc. [pg/µl]	Molarity [pmol/l]	Observations
27	767	637.09	1,258.9	
28	855	678.54	1,202.1	
29	980	434.66	671.8	
30	1,074	768.53	1,084.6	
31	1,173	1,064.52	1,374.5	
32	1,520	280.82	279.9	
33	1,684	117.75	105.9	
34	1,761	70.74	60.9	
35	8,748	1,641.41	284.3	
36	▶ 10,380	75.00	10.9	Upper Marker

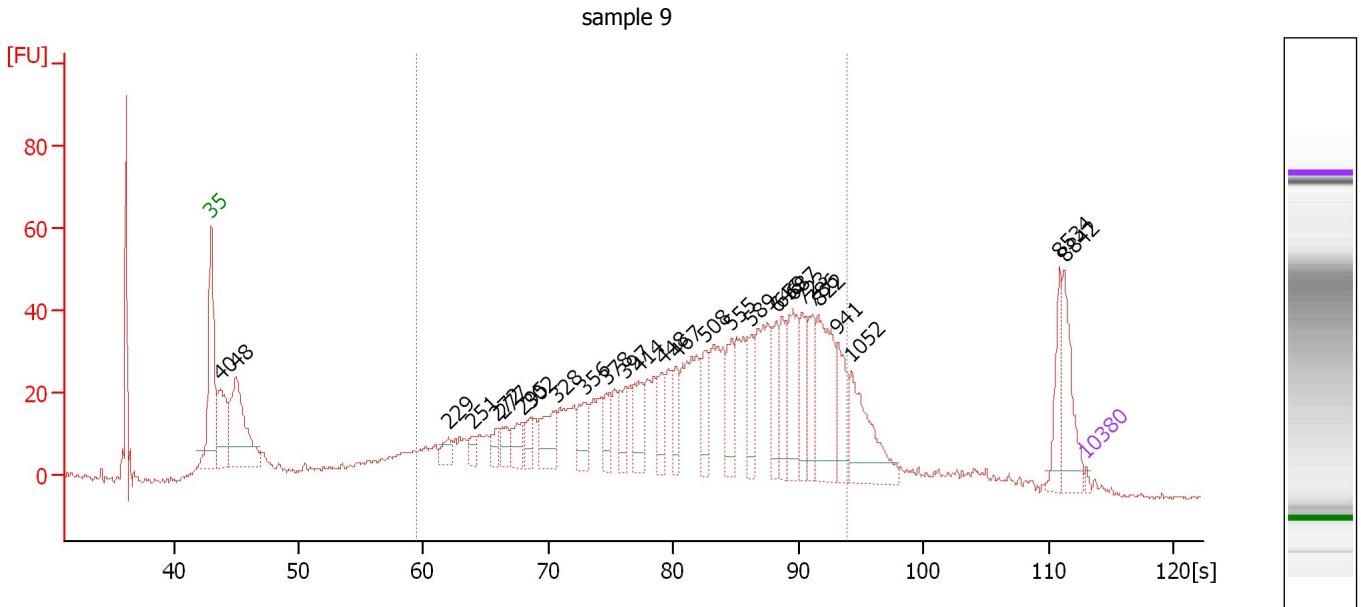
Region table for sample 8 : sample 8

From [bp]	To [bp]	Average Size [bp]	Molarity [pmol/l]	Conc. [pg/µl]	Corr. Area	% of Total	Size distribution in CV [%]	Color
200	1,000	636	31,792.3	11,841.54	428.0	50	28.0	■

Assay Class: High Sensitivity DNA Assay
 Data Path: C:\...ents and Settings\Bioanalyzer\2013-01-22\2013-01-22_001.xad

Created: 1/22/2013 2:18:12 PM
 Modified: 1/22/2013 2:59:34 PM

Electropherogram Summary Continued ...



Overall Results for sample 9 : sample 9

Number of peaks found: 28 Corr. Area 1: 1,131.4
 Noise: 0.5

Peak table for sample 9 : sample 9

Peak	Size [bp]	Conc. [pg/μl]	Molarity [pmol/l]	Observations
1	35	125.00	5,411.3	Lower Marker
2	40	3,078.50	116,991.5	
3	48	5,317.58	166,250.7	
4	229	581.57	3,856.0	
5	251	436.64	2,637.1	
6	272	574.34	3,202.0	
7	277	719.42	3,933.4	
8	295	902.55	4,633.9	
9	302	618.59	3,102.5	
10	328	1,609.29	7,442.3	
11	356	1,163.40	4,953.9	
12	378	758.56	3,043.5	
13	397	1,019.86	3,894.4	
14	414	1,406.75	5,153.0	
15	448	1,032.42	3,493.6	
16	467	1,006.89	3,263.4	
17	508	1,365.98	4,070.9	
18	555	1,295.52	3,534.1	
19	589	1,235.09	3,179.3	
20	646	1,236.50	2,901.3	
21	659	1,182.24	2,718.4	
22	687	2,347.47	5,179.8	
23	723	1,213.28	2,543.3	
24	786	1,515.18	2,922.1	
25	822	3,103.87	5,721.0	
26	941	1,444.91	2,326.3	

Assay Class: High Sensitivity DNA Assay
 Data Path: C:\...ents and Settings\Bioanalyzer\2013-01-22\2013-01-22_001.xad


Created: 1/22/2013 2:18:12 PM
 Modified: 1/22/2013 2:59:34 PM

Electropherogram Summary Continued ...

... Peak table for sample 9 : sample 9

Peak	Size [bp]	Conc. [pg/μl]	Molarity [pmol/l]	Observations
27	1,052	2,571.36	3,703.0	
28	8,534	1,067.60	189.5	
29	8,842	1,700.48	291.4	
30	10,380	75.00	10.9	Upper Marker

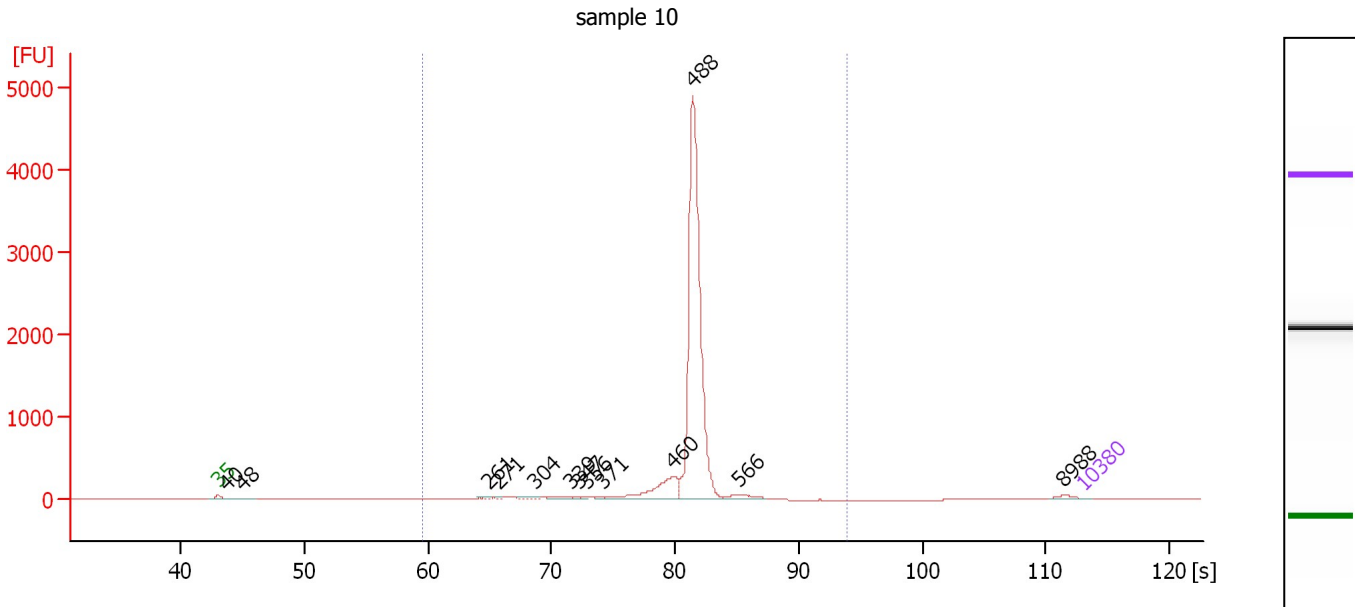
Region table for sample 9 : sample 9

From [bp]	To [bp]	Average Size [bp]	Molarity [pmol/l]	Conc. [pg/μl]	Corr. Area	% of Total	Size distribution in CV [%]	Color
200	1,000	528	202,020.8	56,769.17	1,131.4	69	36.4	

Assay Class: High Sensitivity DNA Assay
 Data Path: C:\...ents and Settings\Bioanalyzer\2013-01-22\2013-01-22_001.xad

Created: 1/22/2013 2:18:12 PM
 Modified: 1/22/2013 2:59:34 PM

Electropherogram Summary Continued ...



Overall Results for sample 10 : sample 10

Number of peaks found: 13 Corr. Area 1: 7,976.3
 Noise: 0.2

Peak table for sample 10 : sample 10

Peak	Size [bp]	Conc. [pg/μl]	Molarity [pmol/l]	Observations
1	35	125.00	5,411.3	Lower Marker
2	40	1,554.99	58,630.6	
3	48	1,511.64	47,469.3	
4	261	467.59	2,714.5	
5	271	278.78	1,560.0	
6	304	1,020.80	5,081.3	
7	339	1,403.92	6,281.8	
8	347	451.89	1,972.1	
9	356	506.40	2,153.6	
10	371	659.43	2,695.1	
11	460	33,291.16	109,728.5	
12	488	282,752.56	878,061.3	
13	566	4,661.19	12,478.9	
14	8,988	1,886.65	318.0	
15	10,380	75.00	10.9	Upper Marker

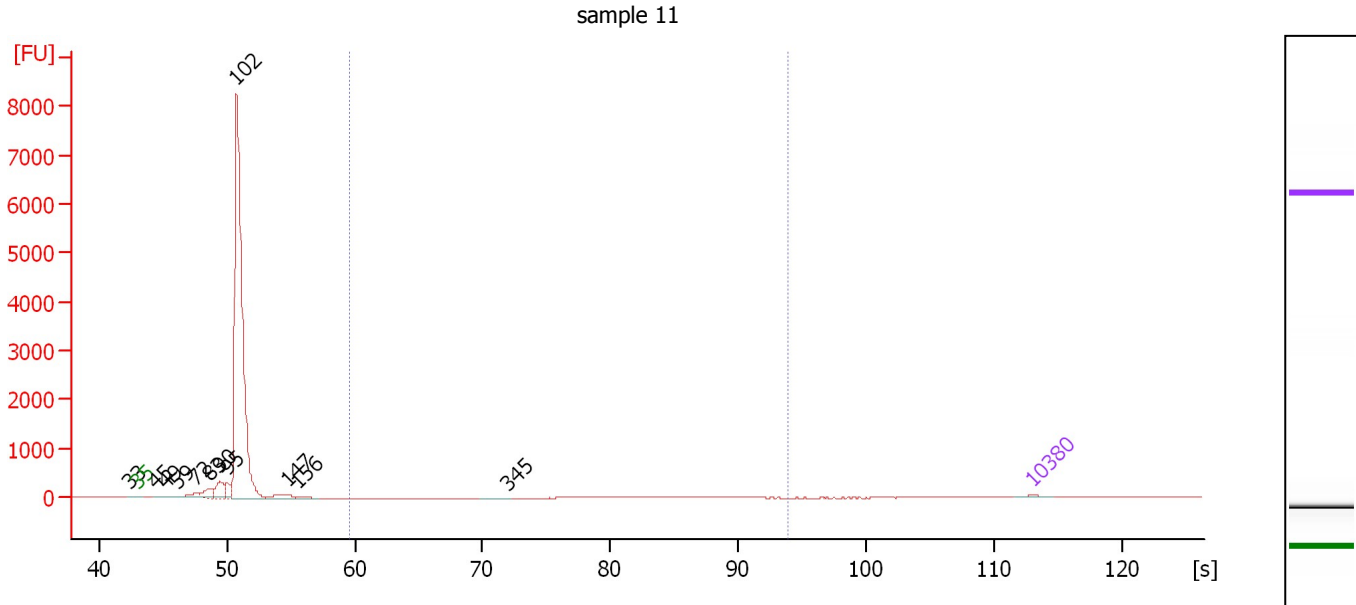
Region table for sample 10 : sample 10

From [bp]	To [bp]	Average Size [bp]	Molarity [pmol/l]	Conc. [pg/μl]	Corr. Area	% of Total	Size distribution in CV [%]	Color
200	1,000	481	1,095,163.4	340,792.97	7,976.3	97	8.9	Blue

Assay Class: High Sensitivity DNA Assay
 Data Path: C:\...ents and Settings\Bioanalyzer\2013-01-22\2013-01-22_001.xad

Created: 1/22/2013 2:18:12 PM
 Modified: 1/22/2013 2:59:34 PM

Electropherogram Summary Continued ...



Overall Results for sample 11 : sample 11

Number of peaks found: 12 Corr. Area 1: 0.0
 Noise: 0.3

Peak table for sample 11 : sample 11

Peak	Size [bp]	Conc. [pg/μl]	Molarity [pmol/l]	Observations
1	33	0.00	0.0	
2	35	125.00	5,411.3	Lower Marker
3	45	24.65	834.5	
4	49	26.84	826.4	
5	59	150.18	3,869.1	
6	72	458.49	9,606.1	
7	83	982.92	18,020.6	
8	90	1,377.59	23,245.4	
9	95	931.93	14,808.4	
10	102	29,586.97	437,515.2	
11	147	577.50	5,968.8	
12	156	258.74	2,507.3	
13	345	22.97	100.9	
14	10,380	75.00	10.9	Upper Marker

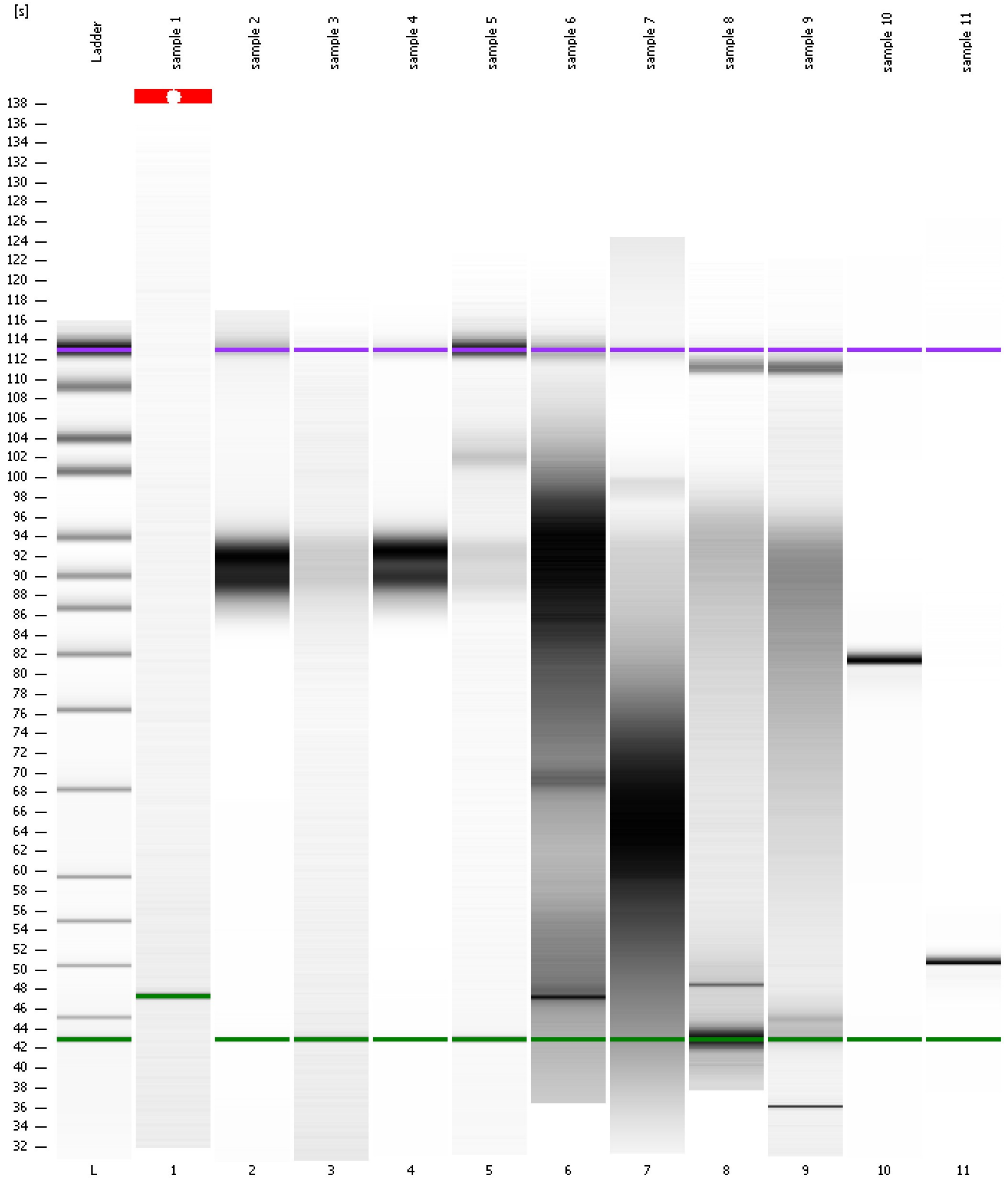
Region table for sample 11 : sample 11

From [bp]	To [bp]	Average Size [bp]	Molarity [pmol/l]	Conc. [pg/μl]	Corr. Area	% of Total	Size distribution in CV [%]	Color
200	1,000	0	0.0	0.00	0.0	0	0.0	Blue

Assay Class: High Sensitivity DNA Assay
Data Path: C:\...ents and Settings\Bioanalyzer\2013-01-22\2013-01-22_001.xad

Created: 1/22/2013 2:18:12 PM
Modified: 1/22/2013 2:59:34 PM

Gel Image



Assay Class: High Sensitivity DNA Assay
 Data Path: C:\...ents and Settings\Bioanalyzer\2013-01-22\2013-01-22_001.xad

Created: 1/22/2013 2:18:12 PM
 Modified: 1/22/2013 2:59:34 PM

Run Logbook

Description	Number	Source	Category	Sub Category	Time	Time Zone	User	Host
Run ended on port 1 (Number of wells acquired: 12)		Instrument	Run		1/22/2013 2:59:31 PM	(GMT --08:00) Pacific Standard Time	UC Davis	D8XSMGH1
Run started on port 1 (File: C:\Documents and Settings\Bioanalyzer\2013-01-22\2013-01-22_001.xad)		Instrument	Run		1/22/2013 2:18:17 PM	(GMT --08:00) Pacific Standard Time	UC Davis	D8XSMGH1
Product Number : G2938B		Instrument	Run		1/22/2013 2:18:17 PM	(GMT --08:00) Pacific Standard Time	UC Davis	D8XSMGH1
Name :		Instrument	Run		1/22/2013 2:18:17 PM	(GMT --08:00) Pacific Standard Time	UC Davis	D8XSMGH1
Vendor : Agilent Technologies		Instrument	Run		1/22/2013 2:18:17 PM	(GMT --08:00) Pacific Standard Time	UC Davis	D8XSMGH1
Serial# : DE13701086		Instrument	Run		1/22/2013 2:18:17 PM	(GMT --08:00) Pacific Standard Time	UC Davis	D8XSMGH1
Firmware : C.01.069		Instrument	Run		1/22/2013 2:18:17 PM	(GMT --08:00) Pacific Standard Time	UC Davis	D8XSMGH1
Cartridge : Electrode		Instrument	Run		1/22/2013 2:18:17 PM	(GMT --08:00) Pacific Standard Time	UC Davis	D8XSMGH1