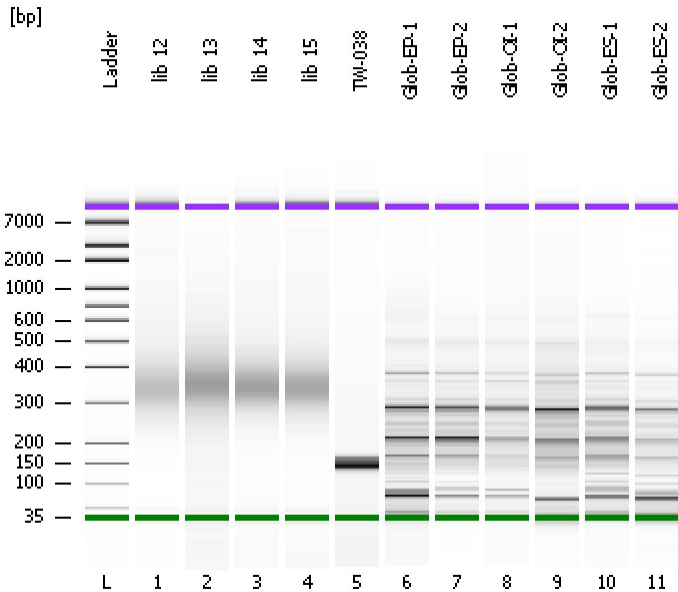


Assay Class: High Sensitivity DNA Assay
Data Path: C:\...ents and Settings\Bioanalyzer\2013-01-24\2013-01-24_002.xad

Created: 1/24/2013 2:04:30 PM
Modified: 1/24/2013 2:45:54 PM

Electrophoresis File Run Summary



Instrument Information:

Instrument Name: DE13701086 Firmware: C.01.069
Serial#: DE13701086 Type: G2938B

Assay Information:

Assay Origin Path: C:\Program Files\Agilent\2100 bioanalyzer\2100 expert\assays\dsDNA\High Sensitivity DNA.xsy
Assay Class: High Sensitivity DNA Assay
Version: 1.03
Assay Comments: Copyright © 2003-2010 Agilent Technologies

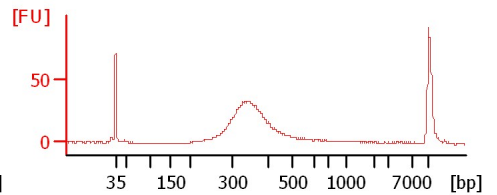
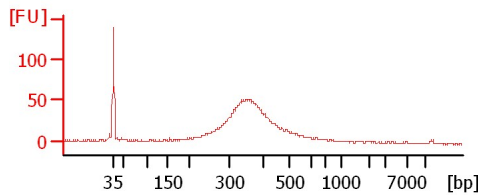
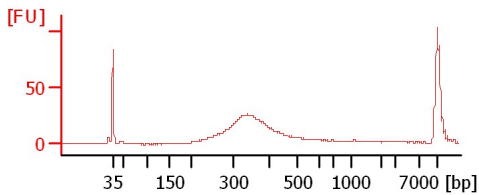
Chip Information:

Chip Lot #:
Reagent Kit Lot #:
Chip Comments:

lib 12

lib 13

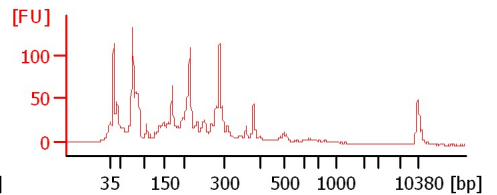
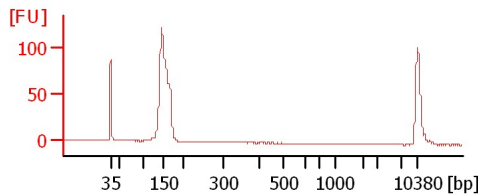
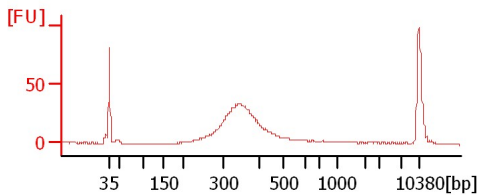
lib 14



lib 15

TW-038

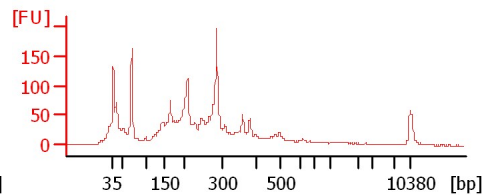
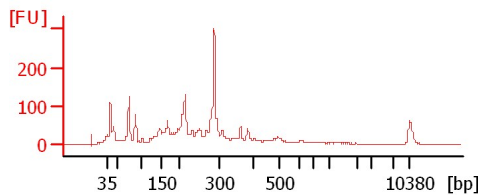
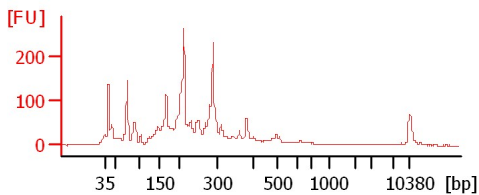
Glob-EP-1



Glob-EP-2

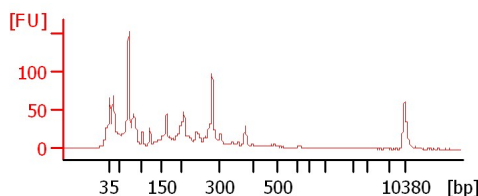
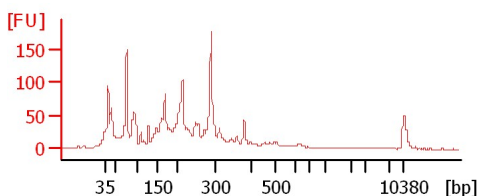
Glob-OI-1

Glob-OI-2



Glob-ES-1

Glob-ES-2



Assay Class: High Sensitivity DNA Assay
 Data Path: C:\...ents and Settings\Bioanalyzer\2013-01-24\2013-01-24_002.xad

Created: 1/24/2013 2:04:30 PM
 Modified: 1/24/2013 2:45:54 PM

Electrophoresis File Run Summary (Chip Summary)

Sample Name	Sample Comment	Rest. Digest	Status	Observation	Result Label	Result Color
lib 12		<input type="checkbox"/>	✓			
lib 13		<input type="checkbox"/>	✓			
lib 14		<input type="checkbox"/>	✓			
lib 15		<input type="checkbox"/>	✓			
TW-038		<input type="checkbox"/>	✓			
Glob-EP-1		<input type="checkbox"/>	✓			
Glob-EP-2		<input type="checkbox"/>	✓			
Glob-OI-1		<input type="checkbox"/>	✓			
Glob-OI-2		<input type="checkbox"/>	✓			
Glob-ES-1		<input type="checkbox"/>	✓			
Glob-ES-2		<input type="checkbox"/>	✓			
Ladder		<input type="checkbox"/>	✓			

Chip Lot #

Reagent Kit Lot #

Chip Comments :

Assay Class: High Sensitivity DNA Assay
Data Path: C:\...ents and Settings\Bioanalyzer\2013-01-24\2013-01-24_002.xad

Created: 1/24/2013 2:04:30 PM
Modified: 1/24/2013 2:45:54 PM

Electrophoresis Assay Details

General Analysis Settings

Number of Available Sample and Ladder Wells (Max.) : 12
Minimum Visible Range [s] : 32
Maximum Visible Range [s] : 138
Start Analysis Time Range [s] : 33
End Analysis Time Range [s] : 137.5
Ladder Concentration [pg/μl] : 1950
Uses Standard Area for Ladder Fragments
Lower Marker Concentration [pg/μl] : 125
Upper Marker Concentration [pg/μl] : 75
Used Upper Marker for Quantitation
Standard Curve Fit is Point to Point
Show Data Aligned to Lower and Upper Marker

Integrator Settings

Integration Start Time [s] : 33.05
Integration End Time [s] : 137
Slope Threshold : 0.8
Height Threshold [FU] : 5
Area Threshold : 0.1
Width Threshold [s] : 0.6
Baseline Plateau [s] : 0.5

Filter Settings

Filter Width [s] : 0.5
Polynomial Order : 4

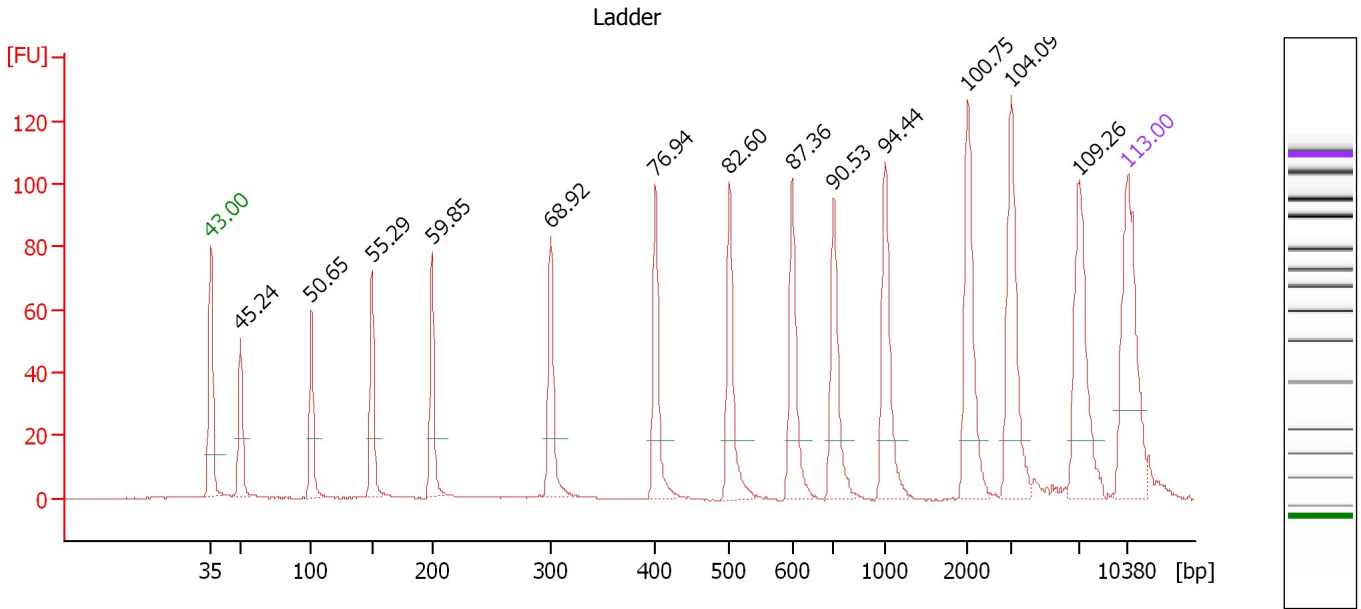
Ladder

Ladder Peak	Size	Area
1	35	160
2	50	210
3	100	208
4	150	221
5	200	242
6	300	270
7	400	305
8	500	306
9	600	336
10	700	321
11	1000	366
12	2000	413
13	3000	411
14	7000	400
15	10380	214

Assay Class: High Sensitivity DNA Assay
 Data Path: C:\...ents and Settings\Bioanalyzer\2013-01-24\2013-01-24_002.xad

Created: 1/24/2013 2:04:30 PM
 Modified: 1/24/2013 2:45:54 PM

Electropherogram Summary



Overall Results for Ladder

Noise: 0.2

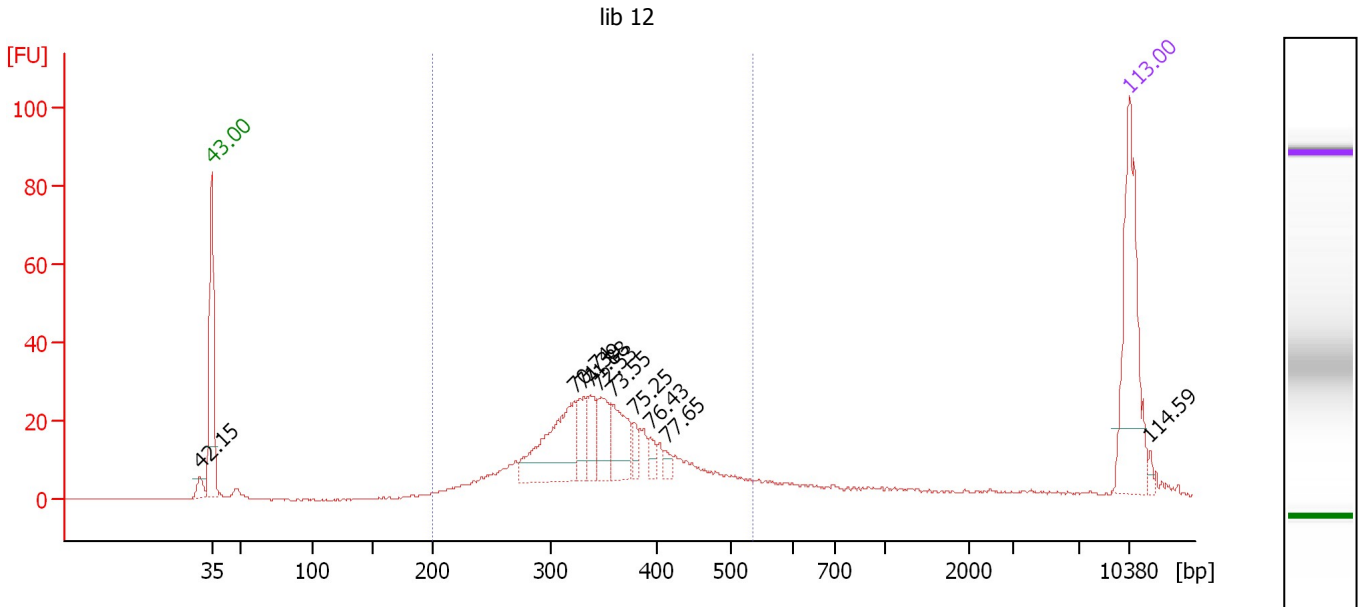
Peak table for Ladder

Peak	Size [bp]	Conc. [pg/μl]	Molarity [pmol/l]	Observations
1	35	125.00	5,411.3	Lower Marker
2	50	150.00	4,545.5	Ladder Peak
3	100	150.00	2,272.7	Ladder Peak
4	150	150.00	1,515.2	Ladder Peak
5	200	150.00	1,136.4	Ladder Peak
6	300	150.00	757.6	Ladder Peak
7	400	150.00	568.2	Ladder Peak
8	500	150.00	454.5	Ladder Peak
9	600	150.00	378.8	Ladder Peak
10	700	150.00	324.7	Ladder Peak
11	1,000	150.00	227.3	Ladder Peak
12	2,000	150.00	113.6	Ladder Peak
13	3,000	150.00	75.8	Ladder Peak
14	7,000	150.00	32.5	Ladder Peak
15	10,380	75.00	10.9	Upper Marker

Assay Class: High Sensitivity DNA Assay
 Data Path: C:\...ents and Settings\Bioanalyzer\2013-01-24\2013-01-24_002.xad

Created: 1/24/2013 2:04:30 PM
 Modified: 1/24/2013 2:45:54 PM

Electropherogram Summary Continued ...



Overall Results for sample 1 : lib 12

Number of peaks found: 10 Corr. Area 1: 427.8
 Noise: 0.2

Peak table for sample 1 : lib 12

Peak	Size [bp]	Conc. [pg/µl]	Molarity [pmol/l]	Observations
1	32	0.00	0.0	
2	35	125.00	5,411.3	Lower Marker
3	323	87.32	410.0	
4	331	22.26	102.0	
5	337	23.65	106.4	
6	345	29.84	131.1	
7	358	37.32	158.1	
8	379	9.97	39.9	
9	394	8.50	32.7	
10	413	5.49	20.2	
11	10,380	75.00	10.9	Upper Marker
12	11,812	0.00	0.0	

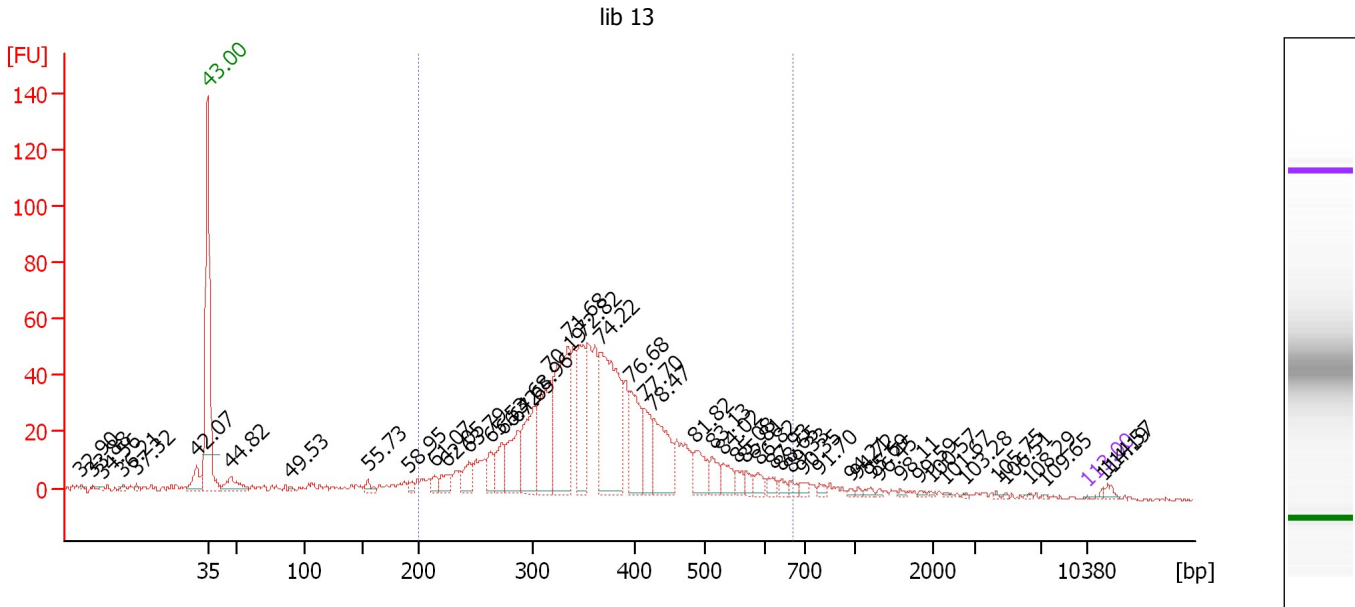
Region table for sample 1 : lib 12

From [bp]	To [bp]	Average Size [bp]	Molarity [pmol/l]	Conc. [pg/µl]	Corr. Area	% of Total	Size distribution in CV [%]	Color
200	537	350	1,931.2	426.12	427.8	86	18.6	Blue

Assay Class: High Sensitivity DNA Assay
 Data Path: C:\...ents and Settings\Bioanalyzer\2013-01-24\2013-01-24_002.xad

Created: 1/24/2013 2:04:30 PM
 Modified: 1/24/2013 2:45:54 PM

Electropherogram Summary Continued ...



Setpoint Deviations for sample 2 : lib 13

Height Threshold [FU] : 1

Overall Results for sample 2 : lib 13

Number of peaks found: 50 Corr. Area 1: 930.7
 Noise: 0.9

Peak table for sample 2 : lib 13

Peak	Size [bp]	Conc. [pg/μl]	Molarity [pmol/l]	Observations
1	0	0.00	0.0	
2	3	0.00	0.0	
3	5	0.00	0.0	
4	11	0.00	0.0	
5	15	0.00	0.0	
6	32	0.00	0.0	
7	35	125.00	5,411.3	Lower Marker
8	47	7,299.51	234,195.9	
9	90	648.26	10,953.1	
10	155	2,223.80	21,767.6	
11	190	1,536.29	12,241.0	
12	213	2,330.13	16,537.4	
13	224	4,322.79	29,208.8	
14	243	5,371.78	33,438.6	
15	263	5,121.52	29,553.7	
16	272	8,367.36	46,543.7	
17	286	13,262.99	70,278.2	
18	300	20,127.08	101,486.4	
19	316	23,327.45	111,908.6	
20	334	38,533.13	174,615.4	
21	349	19,135.63	83,160.8	
22	366	41,885.70	173,347.4	

Assay Class: High Sensitivity DNA Assay
 Data Path: C:\...ents and Settings\Bioanalyzer\2013-01-24\2013-01-24_002.xad


Created: 1/24/2013 2:04:30 PM
 Modified: 1/24/2013 2:45:54 PM

Electropherogram Summary Continued ...

... Peak table for sample 2 : lib 13

Peak	Size [bp]	Conc. [pg/μl]	Molarity [pmol/l]	Observations
23	397	15,634.62	59,700.4	
24	413	9,823.21	35,998.2	
25	427	17,198.62	61,033.4	
26	486	7,444.45	23,199.2	
27	511	5,024.23	14,890.6	
28	530	4,422.06	12,643.2	
29	552	2,374.33	6,514.7	
30	567	1,846.28	4,930.6	
31	589	2,652.13	6,825.4	
32	618	2,008.64	4,925.7	
33	641	1,381.74	3,268.2	
34	662	1,512.87	3,462.8	
35	694	1,368.86	2,988.4	
36	790	1,043.11	2,001.4	
37	982	518.19	799.6	
38	1,043	466.80	677.9	
39	1,198	692.56	875.9	
40	1,319	378.22	434.4	
41	1,581	449.93	431.1	
42	1,817	441.51	368.2	
43	1,971	305.74	235.0	
44	2,276	304.77	202.8	
45	2,760	174.16	95.6	
46	4,283	206.65	73.1	
47	4,874	181.13	56.3	
48	6,253	237.10	57.4	
49	7,354	173.94	35.8	
50	10,380	75.00	10.9	Upper Marker
51	11,452	0.00	0.0	
52	11,797	0.00	0.0	

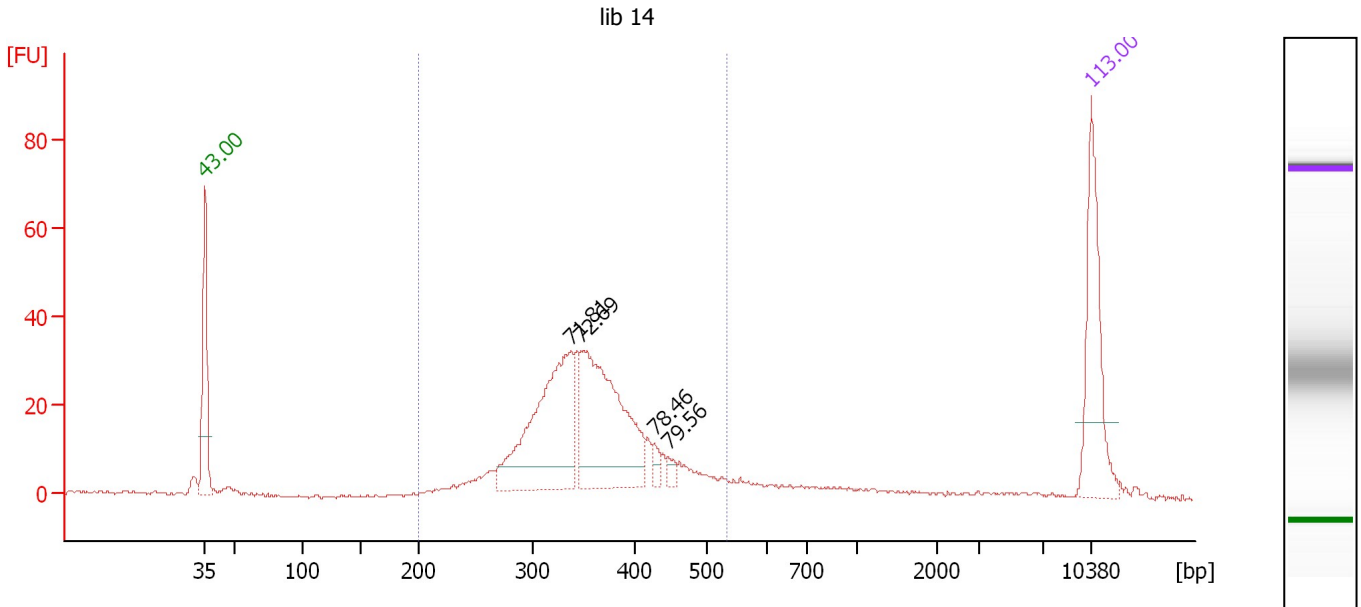
Region table for sample 2 : lib 13

From [bp]	To [bp]	Average Size [bp]	Molarity [pmol/l]	Conc. [pg/μl]	Corr. Area	% of Total	Size distribution in CV [%]	Color
200	671	372	1,405,627.8	322,409.78	930.7	89	22.6	

Assay Class: High Sensitivity DNA Assay
 Data Path: C:\...ents and Settings\Bioanalyzer\2013-01-24\2013-01-24_002.xad

Created: 1/24/2013 2:04:30 PM
 Modified: 1/24/2013 2:45:54 PM

Electropherogram Summary Continued ...



Overall Results for sample 3 : lib 14

Number of peaks found: 4 Corr. Area 1: 473.0
 Noise: 0.4

Peak table for sample 3 : lib 14

Peak	Size [bp]	Conc. [pg/μl]	Molarity [pmol/l]	Observations
1	35	125.00	5,411.3	Lower Marker
2	336	202.13	911.5	
3	347	208.50	910.4	
4	427	9.09	32.3	
5	446	6.87	23.3	
6	10,380	75.00	10.9	Upper Marker

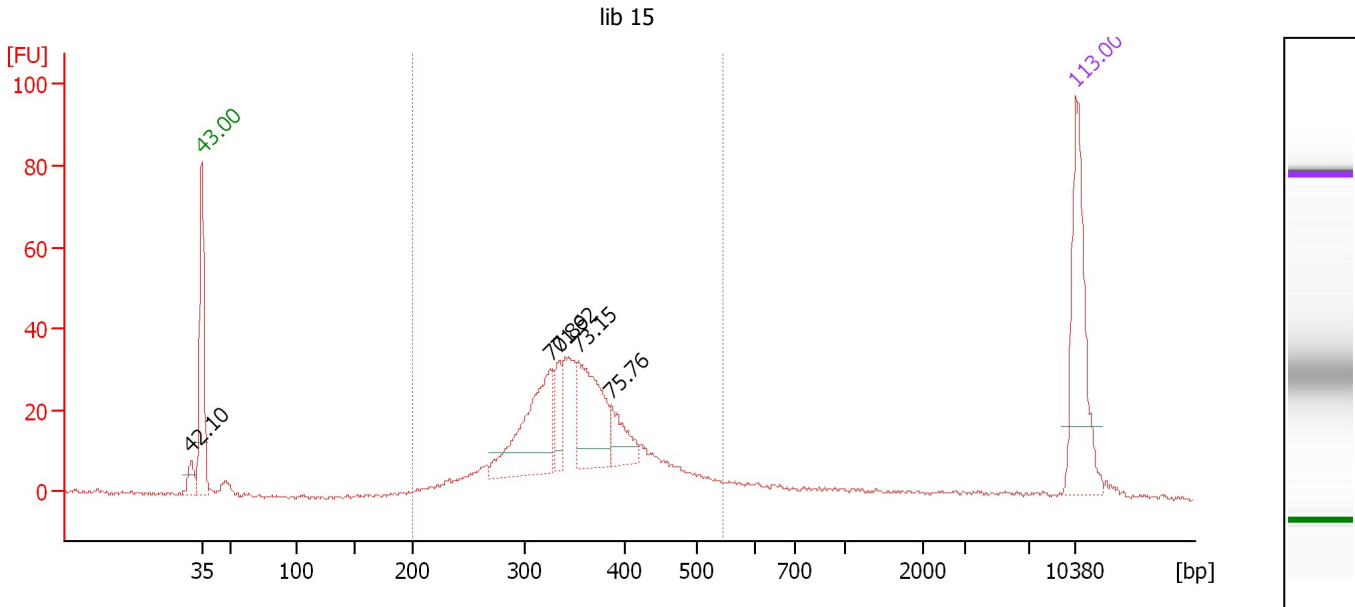
Region table for sample 3 : lib 14

From [bp]	To [bp]	Average Size [bp]	Molarity [pmol/l]	Conc. [pg/μl]	Corr. Area	% of Total	Size distribution in CV [%]	Color
200	534	355	2,482.9	562.38	472.9	86	16.4	Blue

Assay Class: High Sensitivity DNA Assay
 Data Path: C:\...ents and Settings\Bioanalyzer\2013-01-24\2013-01-24_002.xad

Created: 1/24/2013 2:04:30 PM
 Modified: 1/24/2013 2:45:54 PM

Electropherogram Summary Continued ...



Overall Results for sample 4 : lib 15

Number of peaks found: 5 Corr. Area 1: 479.9
 Noise: 0.4

Peak table for sample 4 : lib 15

Peak	Size [bp]	Conc. [pg/μl]	Molarity [pmol/l]	Observations
1	32	0.00	0.0	
2	35	125.00	5,411.3	Lower Marker
3	325	106.88	499.1	
4	334	22.90	104.0	
5	353	85.65	367.9	
6	385	30.83	121.3	
7	10,380	75.00	10.9	Upper Marker

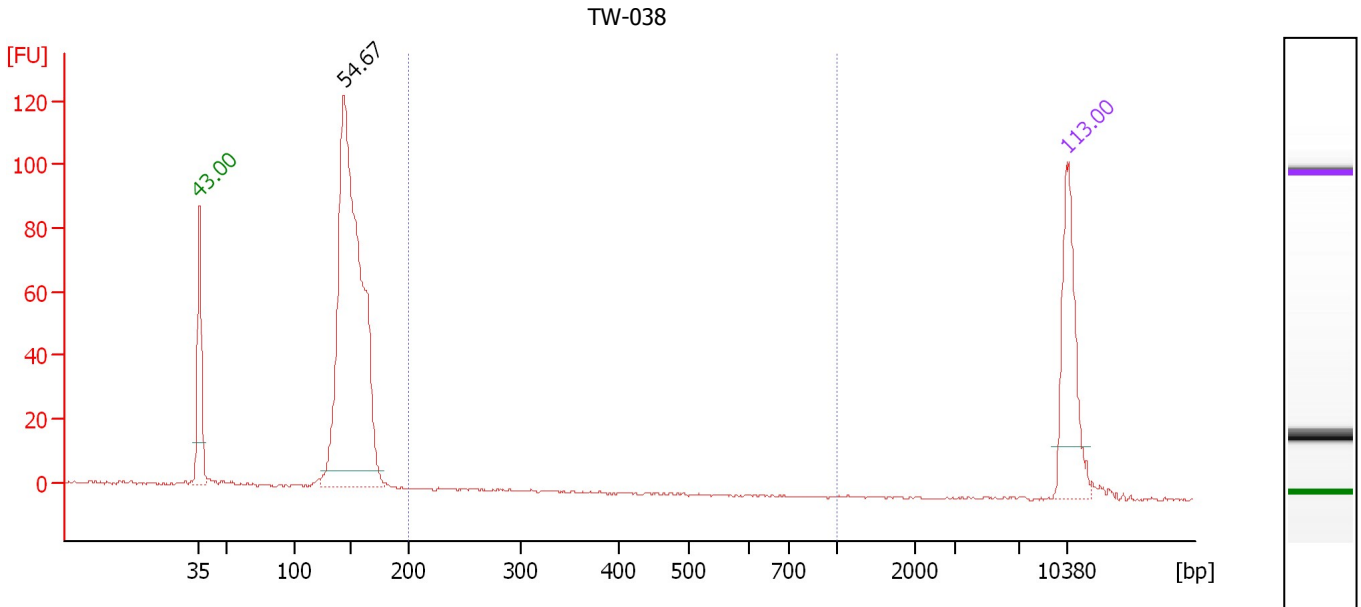
Region table for sample 4 : lib 15

From [bp]	To [bp]	Average Size [bp]	Molarity [pmol/l]	Conc. [pg/μl]	Corr. Area	% of Total	Size distribution in CV [%]	Color
200	544	355	2,214.8	499.59	479.9	88	16.9	Blue

Assay Class: High Sensitivity DNA Assay
 Data Path: C:\...ents and Settings\Bioanalyzer\2013-01-24\2013-01-24_002.xad

Created: 1/24/2013 2:04:30 PM
 Modified: 1/24/2013 2:45:54 PM

Electropherogram Summary Continued ...



Overall Results for sample 5 : TW-038

Number of peaks found: 1 Corr. Area 1: 0.0
 Noise: 0.4

Peak table for sample 5 : TW-038

Peak	Size [bp]	Conc. [pg/μl]	Molarity [pmol/l]	Observations
1	35	125.00	5,411.3	Lower Marker
2	143	620.67	6,563.6	
3	10,380	75.00	10.9	Upper Marker

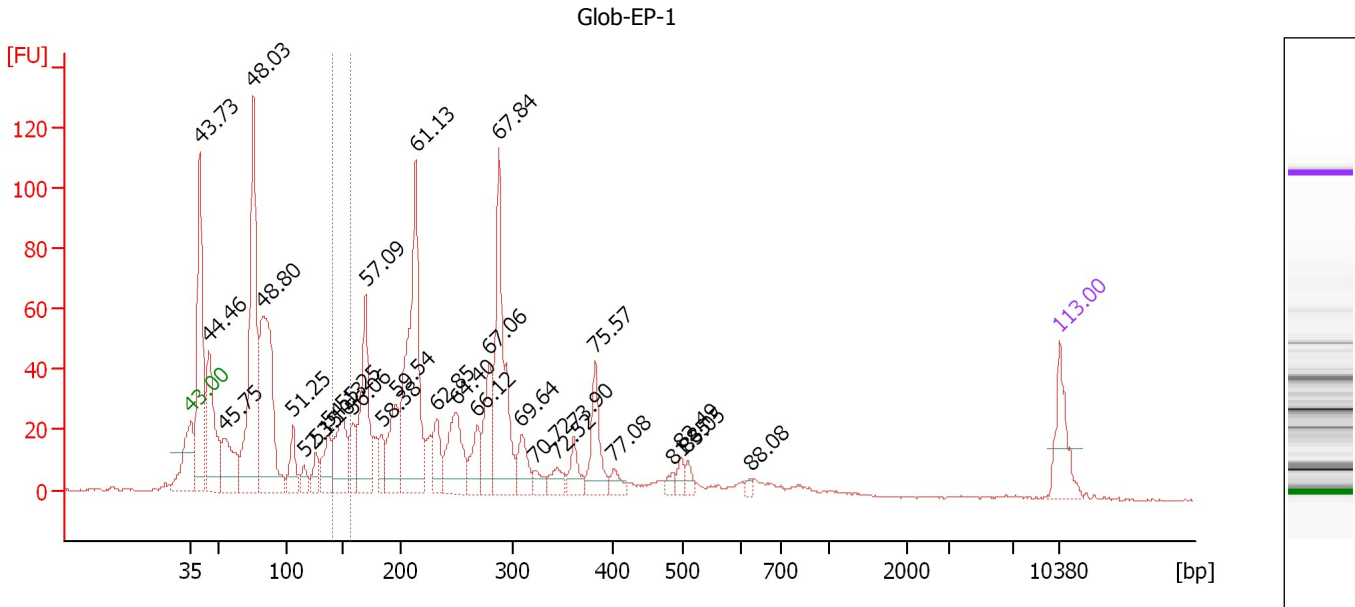
Region table for sample 5 : TW-038

From [bp]	To [bp]	Average Size [bp]	Molarity [pmol/l]	Conc. [pg/μl]	Corr. Area	% of Total	Size distribution in CV [%]	Color
200	1,000	0	0.0	0.00	0.0	0	0.0	Blue

Assay Class: High Sensitivity DNA Assay
 Data Path: C:\...ents and Settings\Bioanalyzer\2013-01-24\2013-01-24_002.xad

Created: 1/24/2013 2:04:30 PM
 Modified: 1/24/2013 2:45:54 PM

Electropherogram Summary Continued ...



Overall Results for sample 6 : Glob-EP-1

Number of peaks found: 30 Corr. Area 1: 60.1
 Noise: 0.4

Peak table for sample 6 : Glob-EP-1

Peak	Size [bp]	Conc. [pg/μl]	Molarity [pmol/l]	Observations
1	35	125.00	5,411.3	Lower Marker
2	40	515.15	19,564.4	
3	45	314.70	10,645.6	
4	55	172.96	4,788.6	
5	76	664.26	13,283.9	
6	83	533.09	9,742.0	
7	106	83.99	1,195.4	
8	116	36.33	473.8	
9	126	47.47	569.1	
10	137	95.81	1,055.9	
11	150	169.67	1,719.3	
12	158	77.60	741.9	
13	170	269.11	2,401.5	
14	184	55.32	455.7	
15	197	148.37	1,143.1	
16	214	528.57	3,739.6	
17	233	83.44	542.4	
18	250	170.41	1,032.2	
19	269	78.94	444.5	
20	279	135.36	733.8	
21	288	367.38	1,932.6	
22	309	72.39	355.0	
23	322	27.73	130.3	
24	345	37.41	164.4	
25	362	48.60	203.4	
26	383	112.89	446.7	

Assay Class: High Sensitivity DNA Assay
 Data Path: C:\...ents and Settings\Bioanalyzer\2013-01-24\2013-01-24_002.xad


Created: 1/24/2013 2:04:30 PM
 Modified: 1/24/2013 2:45:54 PM

Electropherogram Summary Continued ...

... Peak table for sample 6 : Glob-EP-1

Peak	Size [bp]	Conc. [pg/μl]	Molarity [pmol/l]	Observations
27	402	25.86	97.4	
28	487	16.31	50.8	
29	498	23.03	70.1	
30	509	19.33	57.5	
31	623	7.90	19.2	
32	10,380	75.00	10.9	Upper Marker

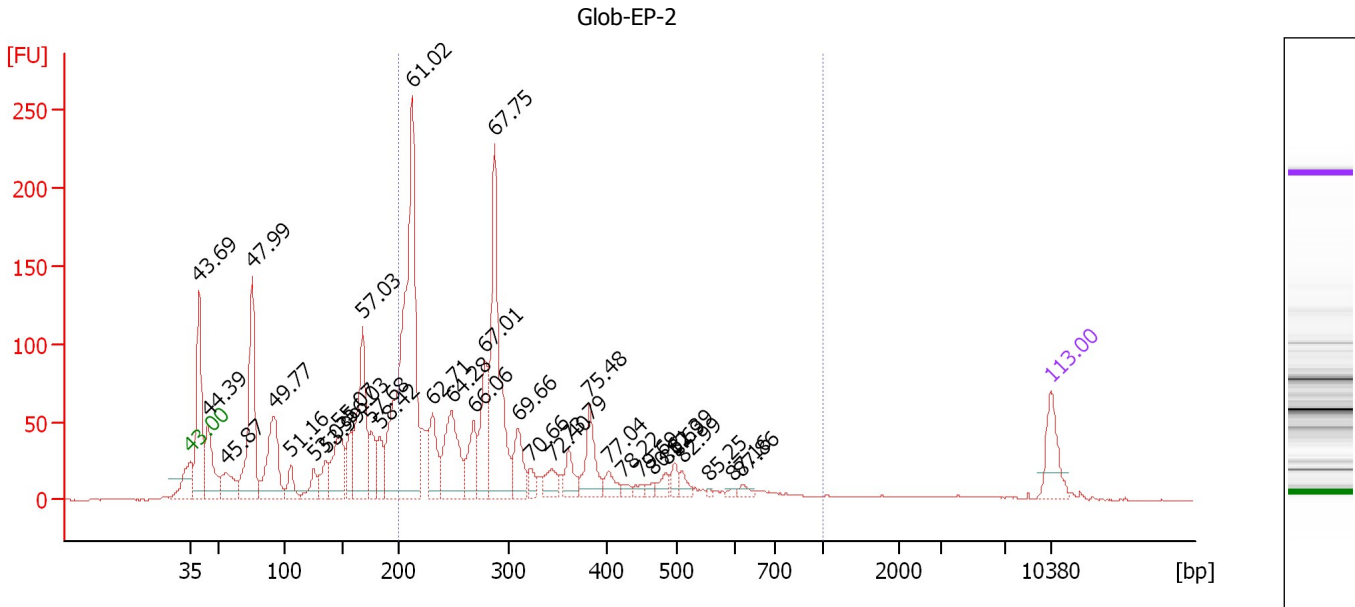
Region table for sample 6 : Glob-EP-1

From [bp]	To [bp]	Average Size [bp]	Molarity [pmol/l]	Conc. [pg/μl]	Corr. Area	% of Total	Size distribution in CV [%]	Color
141	156	148	1,899.0	185.67	60.1	3	3.0	

Assay Class: High Sensitivity DNA Assay
 Data Path: C:\...ents and Settings\Bioanalyzer\2013-01-24\2013-01-24_002.xad

Created: 1/24/2013 2:04:30 PM
 Modified: 1/24/2013 2:45:54 PM

Electropherogram Summary Continued ...



Overall Results for sample 7 : Glob-EP-2

Number of peaks found: 34 Corr. Area 1: 1,615.1
 Noise: 0.4

Peak table for sample 7 : Glob-EP-2

Peak	Size [bp]	Conc. [pg/μl]	Molarity [pmol/l]	Observations
1	35	125.00	5,411.3	Lower Marker
2	40	420.92	16,082.2	
3	44	209.50	7,163.2	
4	56	115.64	3,140.2	
5	75	464.19	9,321.2	
6	92	287.81	4,745.1	
7	106	63.38	910.0	
8	126	58.74	708.3	
9	136	76.33	850.8	
10	148	190.25	1,952.4	
11	158	92.60	887.5	
12	169	336.46	3,015.8	
13	176	95.17	818.5	
14	184	84.56	695.3	
15	213	1,050.82	7,477.8	
16	232	136.68	894.3	
17	249	239.58	1,459.0	
18	268	119.65	675.4	
19	279	181.37	985.1	
20	287	493.60	2,605.1	
21	309	105.90	518.9	
22	322	33.66	158.6	
23	343	50.43	222.5	
24	361	58.70	246.6	
25	382	116.93	464.1	
26	402	39.00	147.1	

Assay Class: High Sensitivity DNA Assay
 Data Path: C:\...ents and Settings\Bioanalyzer\2013-01-24\2013-01-24_002.xad

Created: 1/24/2013 2:04:30 PM
 Modified: 1/24/2013 2:45:54 PM

Electropherogram Summary Continued ...

... Peak table for sample 7 : Glob-EP-2

Peak	Size [bp]	Conc. [pg/μl]	Molarity [pmol/l]	Observations
27	423	15.08	54.1	
28	449	14.31	48.3	
29	465	14.81	48.3	
30	484	28.33	88.7	
31	496	27.01	82.5	
32	508	23.92	71.3	
33	556	5.43	14.8	
34	596	8.21	20.9	
35	616	13.21	32.5	
36	▶ 10,380	75.00	10.9	Upper Marker

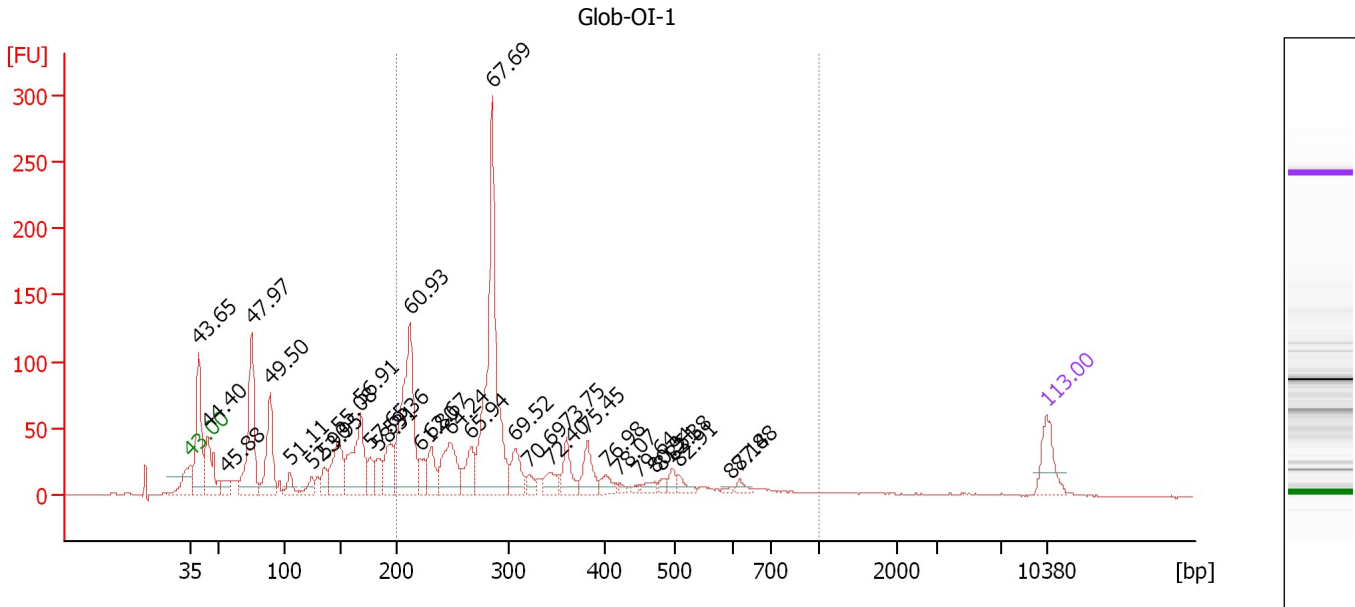
Region table for sample 7 : Glob-EP-2

From [bp]	To [bp]	Average Size [bp]	Molarity [pmol/l]	Conc. [pg/μl]	Corr. Area	% of Total	Size distribution in CV [%]	Color
200	1,000	308	16,047.5	2,892.22	1,615.1	55	38.1	■

Assay Class: High Sensitivity DNA Assay
 Data Path: C:\...ents and Settings\Bioanalyzer\2013-01-24\2013-01-24_002.xad

Created: 1/24/2013 2:04:30 PM
 Modified: 1/24/2013 2:45:54 PM

Electropherogram Summary Continued ...



Overall Results for sample 8 : Glob-OI-1

Number of peaks found: 33 Corr. Area 1: 1,262.3
 Noise: 0.3

Peak table for sample 8 : Glob-OI-1

Peak	Size [bp]	Conc. [pg/μl]	Molarity [pmol/l]	Observations
1	35	125.00	5,411.3	Lower Marker
2	39	358.67	13,798.4	
3	44	207.15	7,076.4	
4	56	47.74	1,293.6	
5	75	405.67	8,168.0	
6	89	248.91	4,220.9	
7	105	43.63	629.8	
8	124	41.16	502.0	
9	136	49.04	548.3	
10	148	186.04	1,908.0	
11	168	275.91	2,491.4	
12	176	59.80	515.0	
13	183	67.58	559.2	
14	195	114.02	887.8	
15	212	514.14	3,676.9	
16	221	55.64	380.6	
17	231	87.79	575.6	
18	248	180.75	1,102.6	
19	267	95.00	538.8	
20	286	736.05	3,894.7	
21	307	89.16	439.5	
22	322	28.80	135.5	
23	343	50.07	221.0	
24	360	77.64	326.6	
25	381	84.13	334.2	
26	401	36.47	137.9	

Assay Class: High Sensitivity DNA Assay
 Data Path: C:\...ents and Settings\Bioanalyzer\2013-01-24\2013-01-24_002.xad

Created: 1/24/2013 2:04:30 PM
 Modified: 1/24/2013 2:45:54 PM

Electropherogram Summary Continued ...

... Peak table for sample 8 : Glob-OI-1

Peak	Size [bp]	Conc. [pg/μl]	Molarity [pmol/l]	Observations
27	420	9.58	34.6	
28	448	7.98	27.0	
29	471	22.17	71.4	
30	481	14.85	46.8	
31	496	24.31	74.2	
32	506	26.34	78.8	
33	595	7.38	18.8	
34	616	17.46	42.9	
35	▶ 10,380	75.00	10.9	Upper Marker

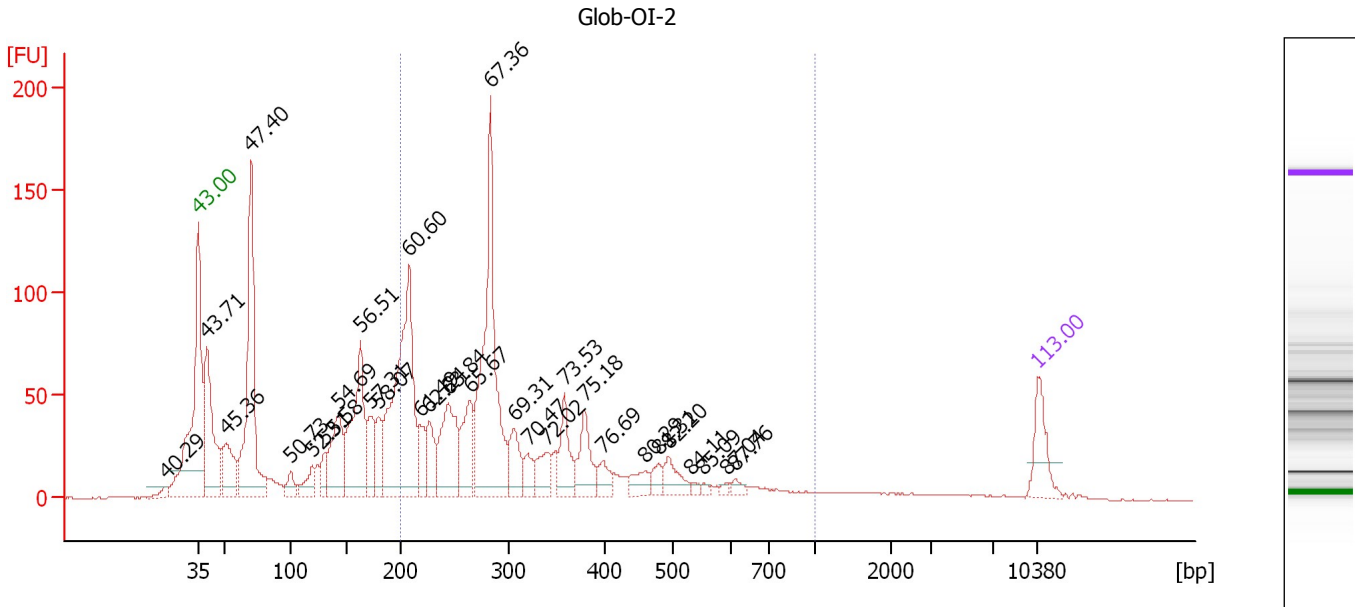
Region table for sample 8 : Glob-OI-1

From [bp]	To [bp]	Average Size [bp]	Molarity [pmol/l]	Conc. [pg/μl]	Corr. Area	% of Total	Size distribution in CV [%]	Color
200	1,000	320	12,555.3	2,355.35	1,262.3	55	37.6	

Assay Class: High Sensitivity DNA Assay
 Data Path: C:\...ents and Settings\Bioanalyzer\2013-01-24\2013-01-24_002.xad

Created: 1/24/2013 2:04:30 PM
 Modified: 1/24/2013 2:45:54 PM

Electropherogram Summary Continued ...



Overall Results for sample 9 : Glob-OI-2

Number of peaks found: 30 Corr. Area 1: 1,309.0
 Noise: 0.3

Peak table for sample 9 : Glob-OI-2

Peak	Size [bp]	Conc. [pg/μl]	Molarity [pmol/l]	Observations
1	26	0.00	0.0	
2	35	125.00	5,411.3	Lower Marker
3	40	428.86	16,340.7	
4	51	178.21	5,286.0	
5	70	664.25	14,384.3	
6	101	45.19	678.7	
7	120	67.34	850.0	
8	132	55.56	640.0	
9	144	221.61	2,339.7	
10	163	371.03	3,440.7	
11	172	117.53	1,034.3	
12	180	99.01	831.4	
13	208	700.71	5,097.4	
14	218	79.16	550.0	
15	226	104.29	697.9	
16	244	246.96	1,533.4	
17	264	154.77	887.9	
18	283	644.47	3,453.9	
19	305	98.16	487.9	
20	319	51.09	242.5	
21	339	74.83	334.8	
22	357	114.06	483.4	
23	378	114.48	458.9	
24	397	42.78	163.3	
25	459	45.55	150.3	
26	477	30.89	98.1	

Assay Class: High Sensitivity DNA Assay
 Data Path: C:\...ents and Settings\Bioanalyzer\2013-01-24\2013-01-24_002.xad


Created: 1/24/2013 2:04:30 PM
 Modified: 1/24/2013 2:45:54 PM

Electropherogram Summary Continued ...

... Peak table for sample 9 : Glob-OI-2

Peak	Size [bp]	Conc. [pg/μl]	Molarity [pmol/l]	Observations
27	493	61.60	189.3	
28	532	10.71	30.5	
29	552	8.45	23.2	
30	593	9.73	24.8	
31	612	16.73	41.4	
32	10,380	75.00	10.9	Upper Marker

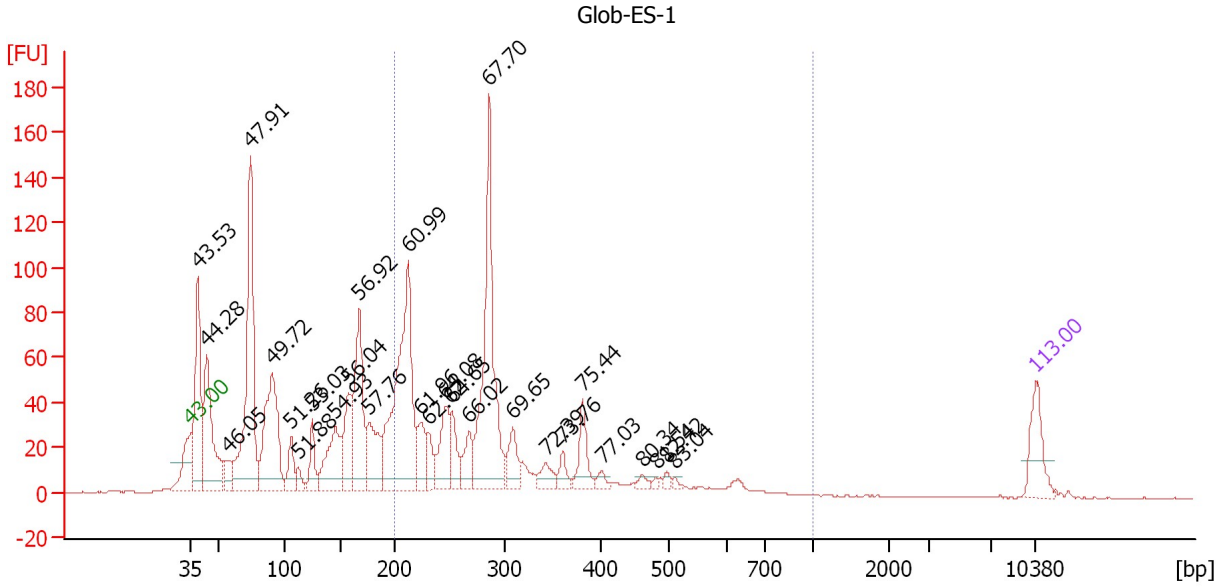
Region table for sample 9 : Glob-OI-2

From [bp]	To [bp]	Average Size [bp]	Molarity [pmol/l]	Conc. [pg/μl]	Corr. Area	% of Total	Size distribution in CV [%]	Color
200	1,000	328	13,818.7	2,615.61	1,309.0	53	38.4	

Assay Class: High Sensitivity DNA Assay
 Data Path: C:\...ents and Settings\Bioanalyzer\2013-01-24\2013-01-24_002.xad

Created: 1/24/2013 2:04:30 PM
 Modified: 1/24/2013 2:45:54 PM

Electropherogram Summary Continued ...



Overall Results for sample 10 : Glob-ES-1

Number of peaks found: 28 Corr. Area 1: 938.5
 Noise: 0.3

Peak table for sample 10 : Glob-ES-1

Peak	Size [bp]	Conc. [pg/μl]	Molarity [pmol/l]	Observations
1	35	125.00	5,411.3	Lower Marker
2	39	405.37	15,931.1	
3	44	370.86	12,891.4	
4	57	60.76	1,601.4	
5	75	667.24	13,545.4	
6	91	414.93	6,880.5	
7	107	75.88	1,078.4	
8	113	31.68	423.8	
9	126	80.42	969.7	
10	146	199.29	2,066.3	
11	158	162.90	1,560.3	
12	168	297.72	2,687.0	
13	177	163.38	1,397.8	
14	213	630.90	4,497.8	
15	223	92.43	627.4	
16	231	63.47	417.1	
17	247	136.62	839.4	
18	253	77.90	466.6	
19	268	73.06	413.0	
20	287	534.07	2,824.0	
21	309	78.21	383.5	
22	343	44.69	197.3	
23	360	33.79	142.1	
24	381	80.46	319.8	
25	402	18.71	70.6	
26	460	13.76	45.3	

Assay Class: High Sensitivity DNA Assay
 Data Path: C:\...ents and Settings\Bioanalyzer\2013-01-24\2013-01-24_002.xad


Created: 1/24/2013 2:04:30 PM
 Modified: 1/24/2013 2:45:54 PM

Electropherogram Summary Continued ...

... Peak table for sample 10 : Glob-ES-1

Peak	Size [bp]	Conc. [pg/μl]	Molarity [pmol/l]	Observations
27	481	5.88	18.5	
28	497	10.39	31.7	
29	509	6.46	19.2	
30	10,380	75.00	10.9	Upper Marker

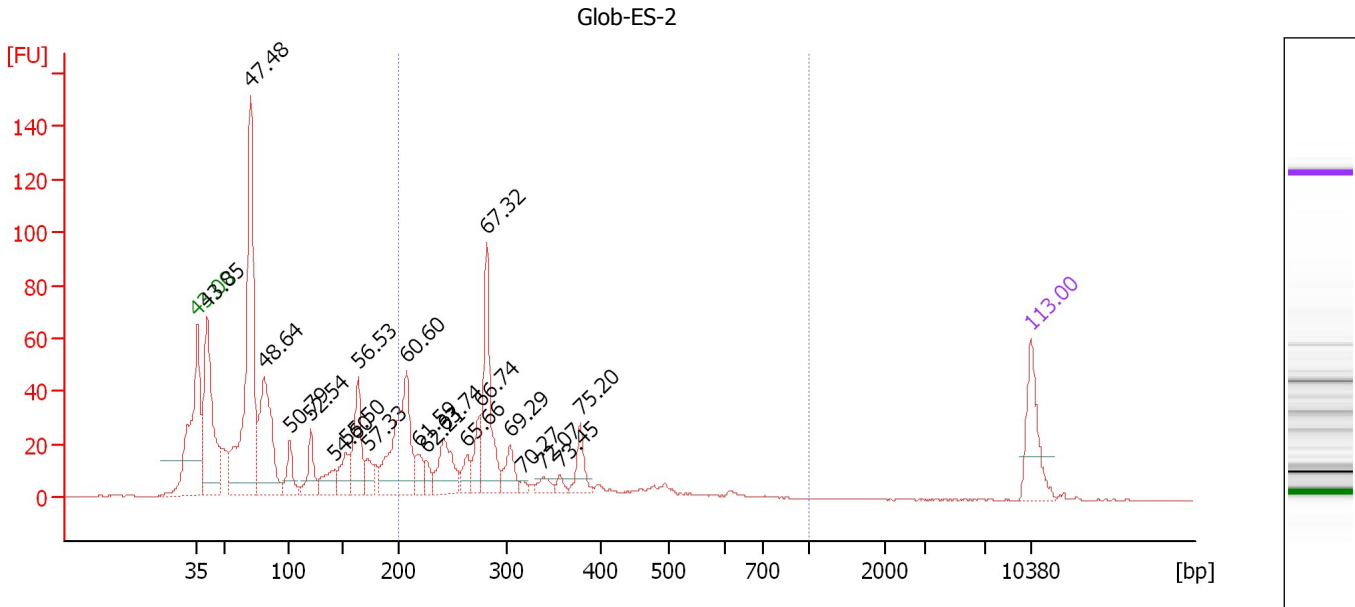
Region table for sample 10 : Glob-ES-1

From [bp]	To [bp]	Average Size [bp]	Molarity [pmol/l]	Conc. [pg/μl]	Corr. Area	% of Total	Size distribution in CV [%]	Color
200	1,000	305	11,560.8	2,103.78	938.5	44	34.6	

Assay Class: High Sensitivity DNA Assay
 Data Path: C:\...ents and Settings\Bioanalyzer\2013-01-24\2013-01-24_002.xad

Created: 1/24/2013 2:04:30 PM
 Modified: 1/24/2013 2:45:54 PM

Electropherogram Summary Continued ...



Overall Results for sample 11 : Glob-ES-2

Number of peaks found: 21 Corr. Area 1: 487.0
 Noise: 0.2

Peak table for sample 11 : Glob-ES-2

Peak	Size [bp]	Conc. [pg/μl]	Molarity [pmol/l]	Observations
1	35	125.00	5,411.3	Lower Marker
2	41	392.63	14,615.6	
3	71	677.79	14,526.8	
4	81	297.36	5,531.6	
5	102	64.83	967.6	
6	120	74.23	934.6	
7	143	56.01	595.3	
8	152	61.52	612.3	
9	164	136.19	1,261.8	
10	172	40.87	359.2	
11	208	267.90	1,948.8	
12	219	37.23	257.4	
13	226	27.26	182.7	
14	243	105.31	657.1	
15	264	36.96	212.1	
16	276	55.77	306.3	
17	282	195.44	1,048.9	
18	305	48.89	243.2	
19	317	9.87	47.2	
20	339	19.38	86.6	
21	356	12.28	52.2	
22	378	47.21	189.1	
23	10,380	75.00	10.9	Upper Marker

Assay Class: High Sensitivity DNA Assay
Data Path: C:\...ents and Settings\Bioanalyzer\2013-01-24\2013-01-24_002.xad

Created: 1/24/2013 2:04:30 PM
Modified: 1/24/2013 2:45:54 PM

Electropherogram Summary Continued ...

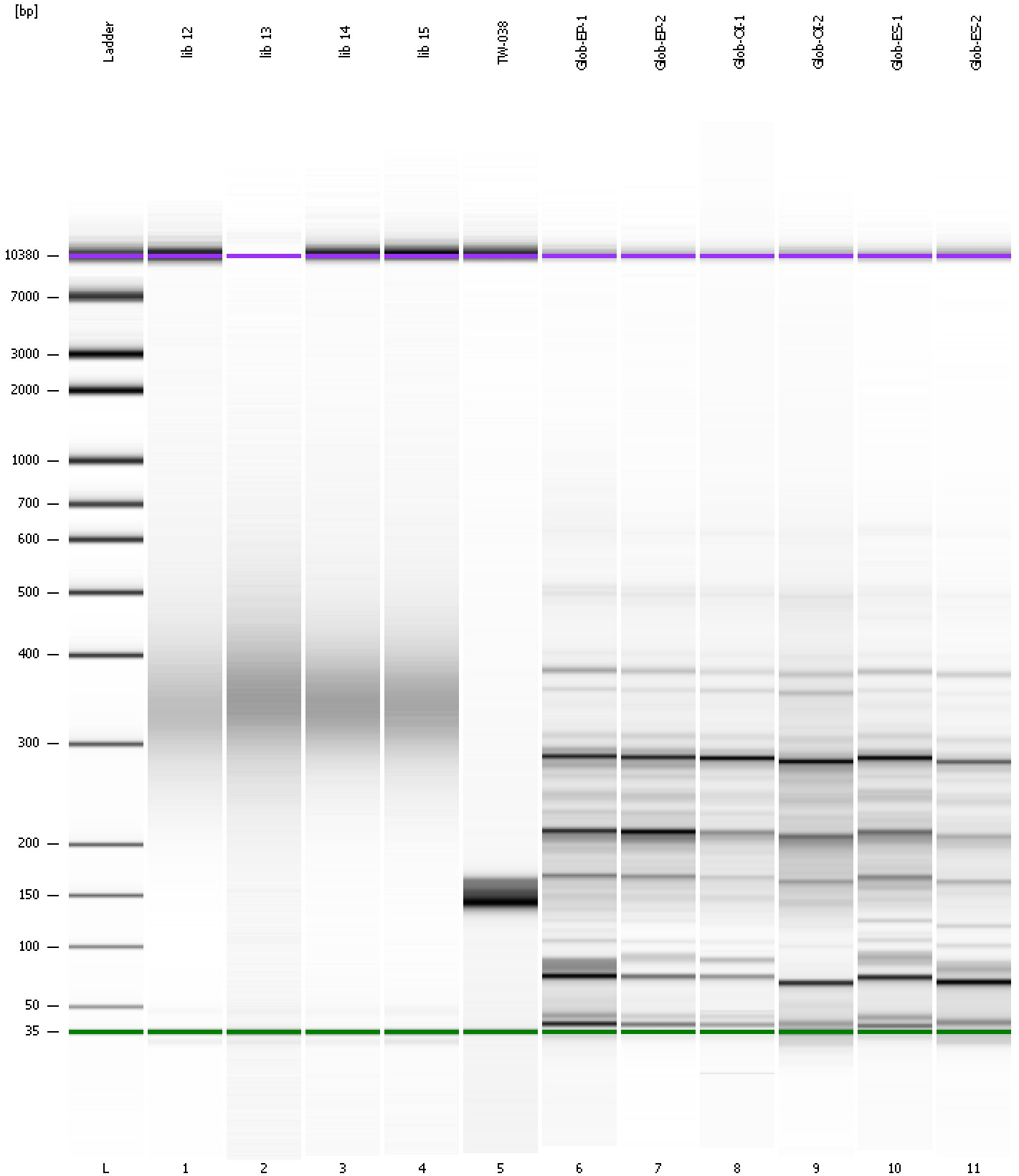
... Region table for sample 11 : Glob-ES-2

From [bp]	To [bp]	Average Size [bp]	Molarity [pmol/l]	Conc. [pg/μl]	Corr. Area	% of Total	Size distribution in CV [%]	Color
200	1,000	307	5,315.3	974.35	487.0	36	34.4	■

Assay Class: High Sensitivity DNA Assay
Data Path: C:\...ents and Settings\Bioanalyzer\2013-01-24\2013-01-24_002.xad

Created: 1/24/2013 2:04:30 PM
Modified: 1/24/2013 2:45:54 PM

Gel Image



Assay Class: High Sensitivity DNA Assay
 Data Path: C:\...ents and Settings\Bioanalyzer\2013-01-24\2013-01-24_002.xad

Created: 1/24/2013 2:04:30 PM
 Modified: 1/24/2013 2:45:54 PM

Run Logbook

Description	Number	Source	Category	Sub Category	Time	Time Zone	User	Host
Run ended on port 1 (Number of wells acquired: 12)		Instrument	Run		1/24/2013 2:45:49 PM	(GMT --08:00) Pacific Standard Time	UC Davis	D8XSMGH1
Run started on port 1 (File: C:\Documents and Settings\Bioanalyzer\2013-01-24\2013-01-24_002.xad)		Instrument	Run		1/24/2013 2:04:35 PM	(GMT --08:00) Pacific Standard Time	UC Davis	D8XSMGH1
Product Number : G2938B		Instrument	Run		1/24/2013 2:04:35 PM	(GMT --08:00) Pacific Standard Time	UC Davis	D8XSMGH1
Name :		Instrument	Run		1/24/2013 2:04:35 PM	(GMT --08:00) Pacific Standard Time	UC Davis	D8XSMGH1
Vendor : Agilent Technologies		Instrument	Run		1/24/2013 2:04:35 PM	(GMT --08:00) Pacific Standard Time	UC Davis	D8XSMGH1
Serial# : DE13701086		Instrument	Run		1/24/2013 2:04:35 PM	(GMT --08:00) Pacific Standard Time	UC Davis	D8XSMGH1
Firmware : C.01.069		Instrument	Run		1/24/2013 2:04:35 PM	(GMT --08:00) Pacific Standard Time	UC Davis	D8XSMGH1
Cartridge : Electrode		Instrument	Run		1/24/2013 2:04:35 PM	(GMT --08:00) Pacific Standard Time	UC Davis	D8XSMGH1