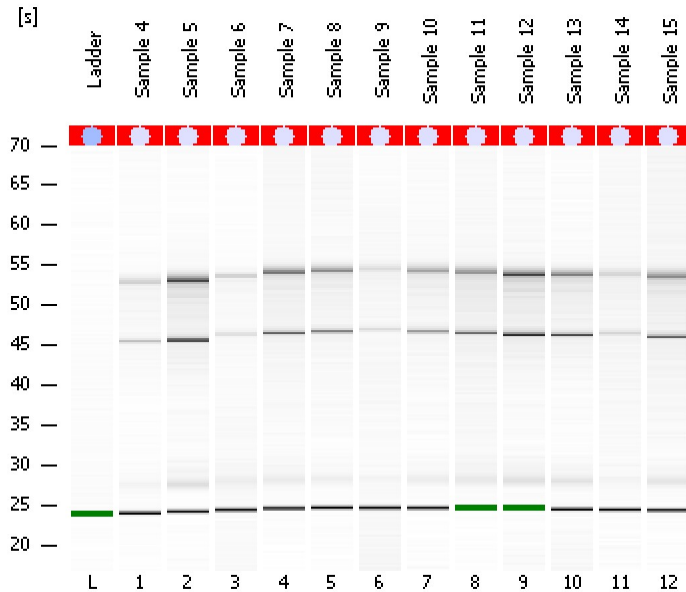


Assay Class: Eukaryote Total RNA Nano
Data Path: C:\...ents and Settings\Bioanalyzer\2013-01-31\2013-01-31_002.xad

Created: 1/31/2013 12:51:31 PM
Modified: 1/31/2013 1:17:26 PM

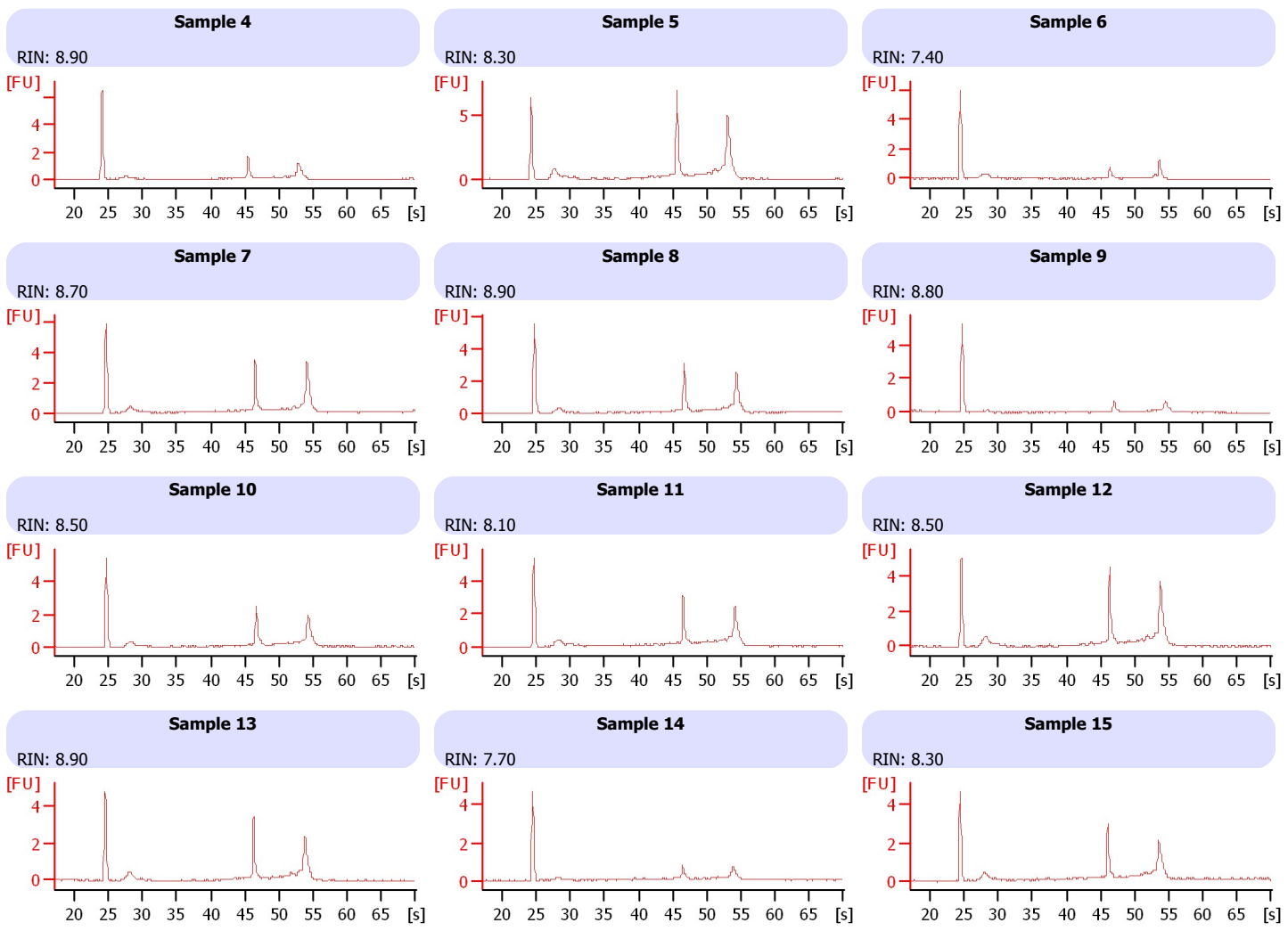
Electrophoresis File Run Summary



Instrument Information:
Instrument Name: DE13701086 Firmware: C.01.069
Serial#: DE13701086 Type: G2938B

Assay Information:
Assay Origin Path: C:\Program Files\Agilent\2100 bioanalyzer\2100 expert\assays\RNA\Eukaryote Total RNA Nano Series II.xsy
Assay Class: Eukaryote Total RNA Nano
Version: 2.6
Assay Comments: Total RNA Analysis ng sensitivity (Eukaryote)
© Copyright 2003 - 2009 Agilent Technologies, Inc.

Chip Information:
Chip Lot #: Reagent Kit Lot #: Chip Comments:



Assay Class: Eukaryote Total RNA Nano
Data Path: C:\...ents and Settings\Bioanalyzer\2013-01-31\2013-01-31_002.xad

Created: 1/31/2013 12:51:31 PM
Modified: 1/31/2013 1:17:26 PM

Electrophoresis File Run Summary (Chip Summary)

Sample Name	Sample Comment	Status	Result Label	Result Color
Sample 4		✓	RIN: 8.90	
Sample 5		✓	RIN: 8.30	
Sample 6		✓	RIN: 7.40	
Sample 7		✓	RIN: 8.70	
Sample 8		✓	RIN: 8.90	
Sample 9		✓	RIN: 8.80	
Sample 10		✓	RIN: 8.50	
Sample 11		✓	RIN: 8.10	
Sample 12		✓	RIN: 8.50	
Sample 13		✓	RIN: 8.90	
Sample 14		✓	RIN: 7.70	
Sample 15		✓	RIN: 8.30	
Ladder		✓	All Other Samples	

Chip Lot #

Reagent Kit Lot #

Chip Comments :

Assay Class: Eukaryote Total RNA Nano
Data Path: C:\...ents and Settings\Bioanalyzer\2013-01-31\2013-01-31_002.xad

Created: 1/31/2013 12:51:31 PM
Modified: 1/31/2013 1:17:26 PM

Electrophoresis Assay Details

General Analysis Settings

Number of Available Sample and Ladder Wells (Max.) : 13
Minimum Visible Range [s] : 17
Maximum Visible Range [s] : 70
Start Analysis Time Range [s] : 19
End Analysis Time Range [s] : 69
Ladder Concentration [ng/μl] : 150
Lower Marker Concentration [ng/μl] : 0
Upper Marker Concentration [ng/μl] : 0
Used Lower Marker for Quantitation
Standard Curve Fit is Logarithmic
Show Data Aligned to Lower Marker

Integrator Settings

Integration Start Time [s] : 19
Integration End Time [s] : 69
Slope Threshold : 0.6
Height Threshold [FU] : 0.5
Area Threshold : 0.2
Width Threshold [s] : 0.5
Baseline Plateau [s] : 6

Filter Settings

Filter Width [s] : 0.5
Polynomial Order : 4

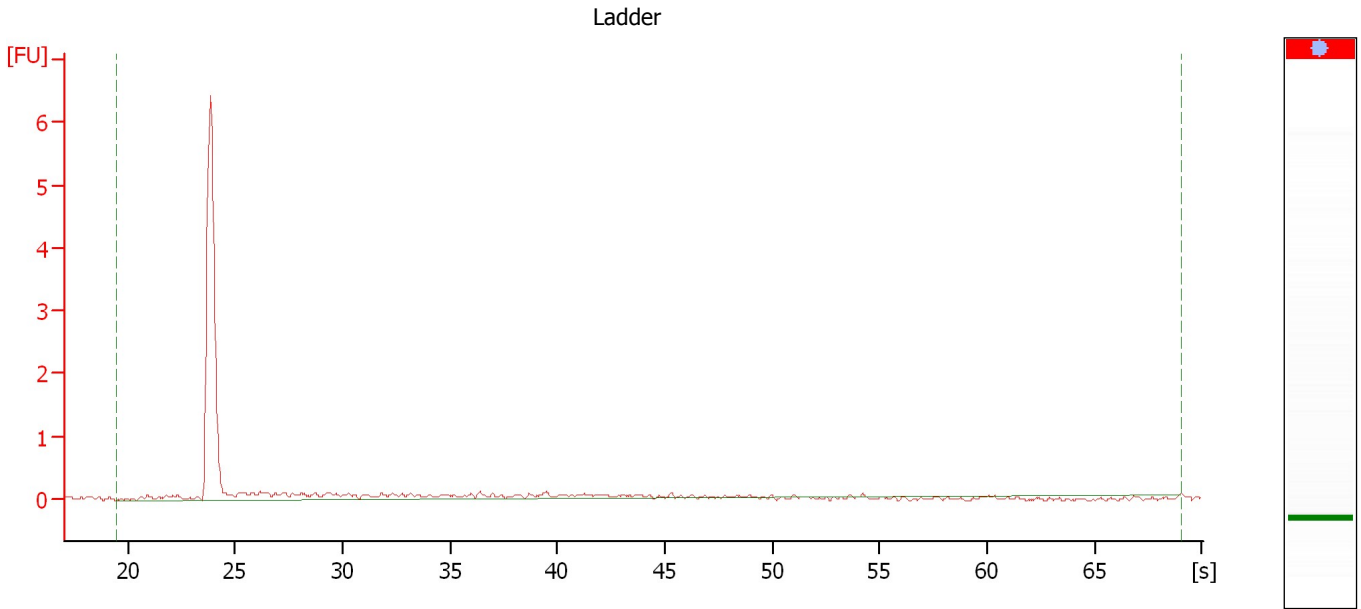
Ladder

Ladder Peak	Size
1	25
2	200
3	500
4	1000
5	2000
6	4000

Assay Class: Eukaryote Total RNA Nano
Data Path: C:\...ents and Settings\Bioanalyzer\2013-01-31\2013-01-31_002.xad

Created: 1/31/2013 12:51:31 PM
Modified: 1/31/2013 1:17:26 PM

Electropherogram Summary



Overall Results for Ladder

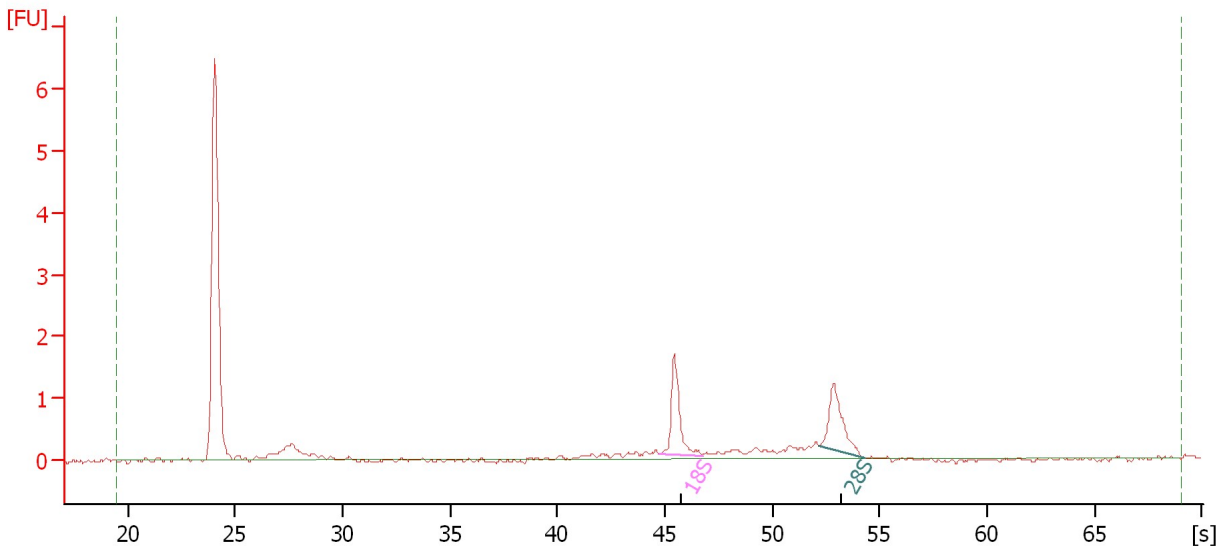
RNA Area:	4.1	Result Flagging Color:	
RNA Concentration:	150 ng/ μ l	Result Flagging Label:	All Other Samples

Assay Class: Eukaryote Total RNA Nano
Data Path: C:\...ents and Settings\Bioanalyzer\2013-01-31\2013-01-31_002.xad

Created: 1/31/2013 12:51:31 PM
Modified: 1/31/2013 1:17:26 PM

Electropherogram Summary Continued ...

Sample 4



Overall Results for sample 1 : Sample 4

RNA Area: 17.5 RNA Integrity Number (RIN): 8.9 (B.02.08)
RNA Concentration: 643 ng/μl Result Flagging Color:
rRNA Ratio [28s / 18s]: 1.0 Result Flagging Label: RIN: 8.90

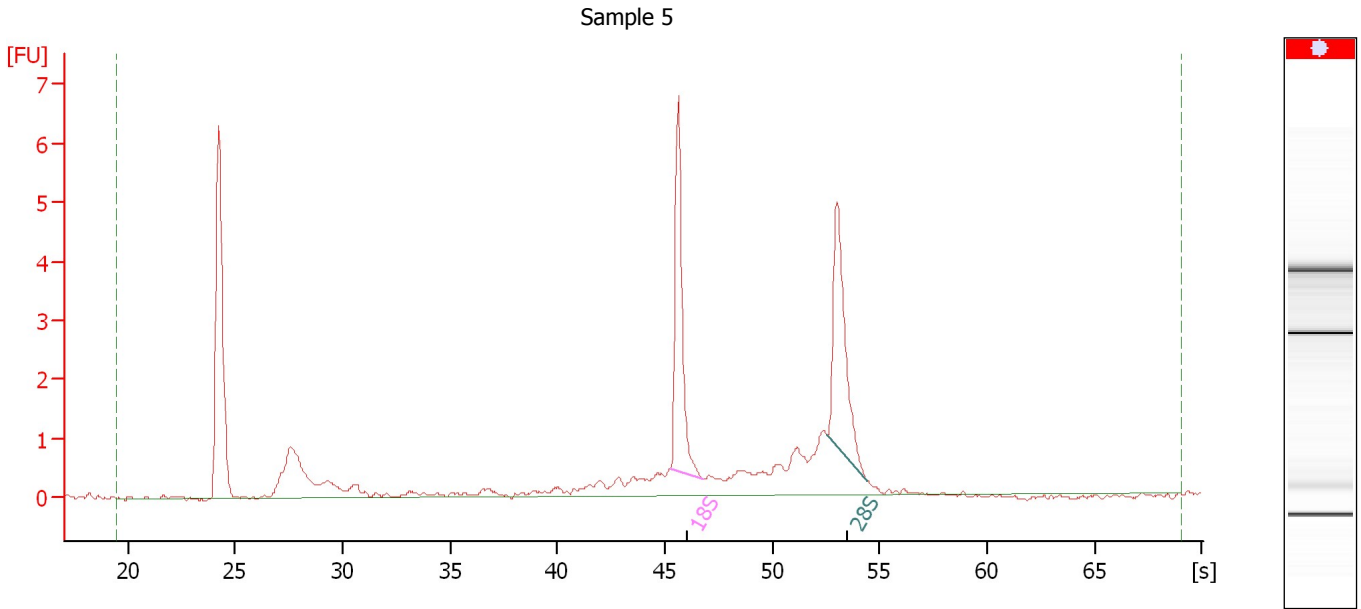
Fragment table for sample 1 : Sample 4

Name	Start Size [nt]	End Size [nt]	Area	% of total Area
18S	0	0	1.5	8.6
28S	0	0	1.5	8.3

Assay Class: Eukaryote Total RNA Nano
Data Path: C:\...ents and Settings\Bioanalyzer\2013-01-31\2013-01-31_002.xad

Created: 1/31/2013 12:51:31 PM
Modified: 1/31/2013 1:17:26 PM

Electropherogram Summary Continued ...



Overall Results for sample 2 : Sample 5

RNA Area: 37.8 RNA Integrity Number (RIN): 8.3 (B.02.08)
RNA Concentration: 1,385 ng/μl Result Flagging Color:
rRNA Ratio [28s / 18s]: 1.0 Result Flagging Label: RIN: 8.30

Fragment table for sample 2 : Sample 5

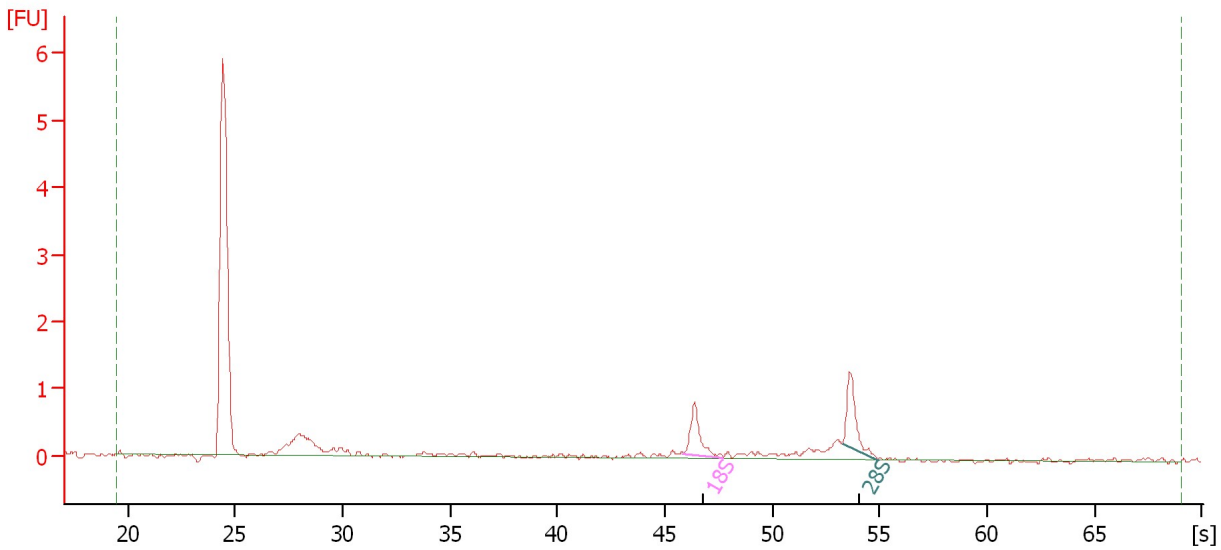
Name	Start Size [nt]	End Size [nt]	Area	% of total Area
18S	0	0	5.0	13.1
28S	0	0	4.9	12.9

Assay Class: Eukaryote Total RNA Nano
Data Path: C:\...ents and Settings\Bioanalyzer\2013-01-31\2013-01-31_002.xad

Created: 1/31/2013 12:51:31 PM
Modified: 1/31/2013 1:17:26 PM

Electropherogram Summary Continued ...

Sample 6



Overall Results for sample 3 : Sample 6

RNA Area:	15.5	RNA Integrity Number (RIN):	7.4 (B.02.08)
RNA Concentration:	569 ng/μl	Result Flagging Color:	
rRNA Ratio [28s / 18s]:	1.2	Result Flagging Label:	RIN: 7.40

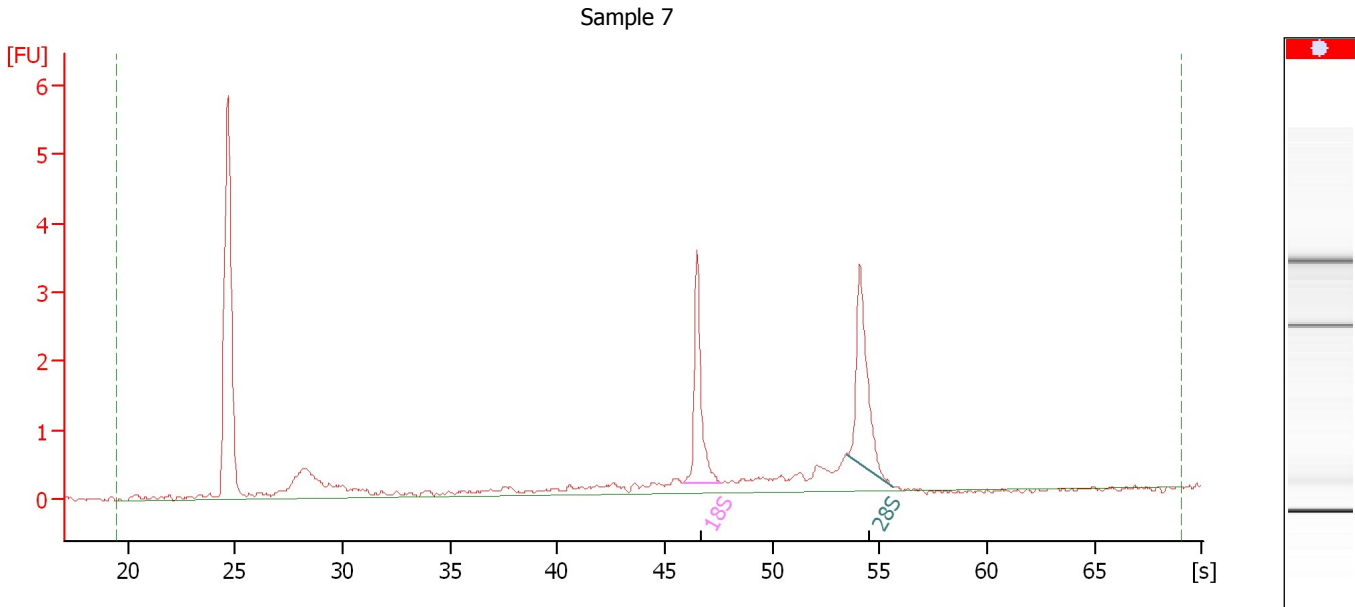
Fragment table for sample 3 : Sample 6

Name	Start Size [nt]	End Size [nt]	Area	% of total Area
18S	0	0	0.8	5.2
28S	0	0	0.9	6.1

Assay Class: Eukaryote Total RNA Nano
 Data Path: C:\...ents and Settings\Bioanalyzer\2013-01-31\2013-01-31_002.xad

Created: 1/31/2013 12:51:31 PM
 Modified: 1/31/2013 1:17:26 PM

Electropherogram Summary Continued ...



Overall Results for sample 4 : Sample 7

RNA Area:	27.3	RNA Integrity Number (RIN):	8.7 (B.02.08)
RNA Concentration:	1,002 ng/μl	Result Flagging Color:	
rRNA Ratio [28s / 18s]:	1.1	Result Flagging Label:	RIN: 8.70

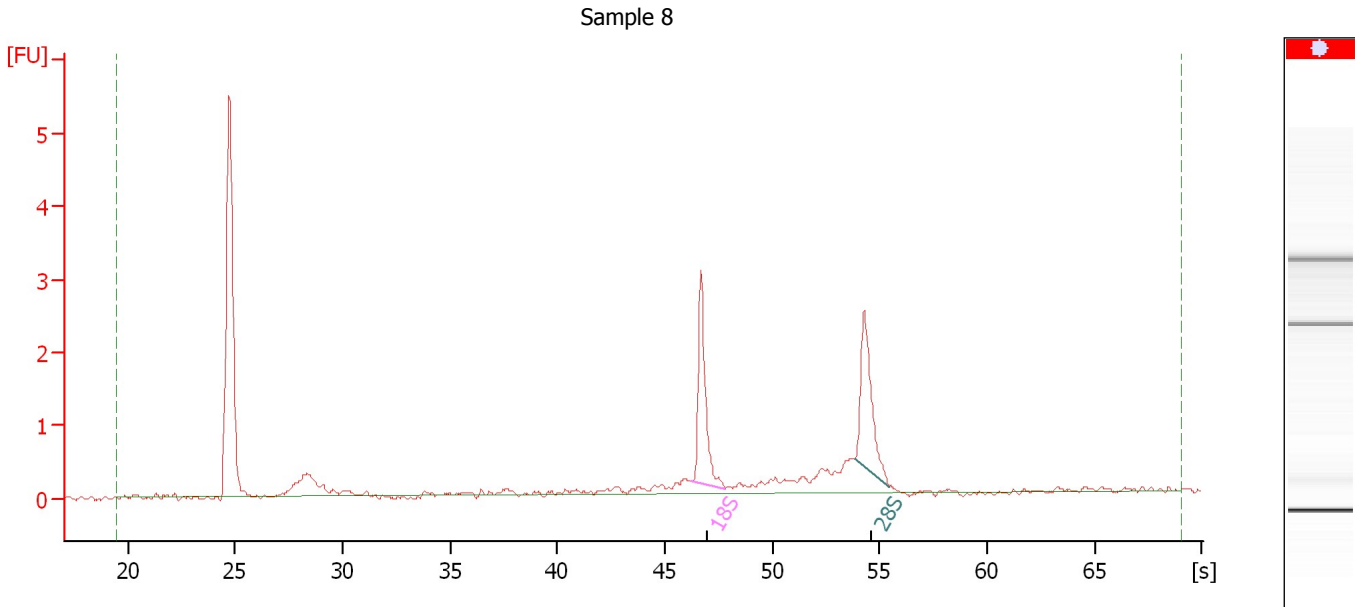
Fragment table for sample 4 : Sample 7

Name	Start Size [nt]	End Size [nt]	Area	% of total Area
18S	0	0	2.7	9.9
28S	0	0	3.1	11.3

Assay Class: Eukaryote Total RNA Nano
Data Path: C:\...ents and Settings\Bioanalyzer\2013-01-31\2013-01-31_002.xad

Created: 1/31/2013 12:51:31 PM
Modified: 1/31/2013 1:17:26 PM

Electropherogram Summary Continued ...



Overall Results for sample 5 : Sample 8

RNA Area:	20.3	RNA Integrity Number (RIN):	8.9 (B.02.08)
RNA Concentration:	743 ng/μl	Result Flagging Color:	
rRNA Ratio [28s / 18s]:	1.0	Result Flagging Label:	RIN: 8.90

Fragment table for sample 5 : Sample 8

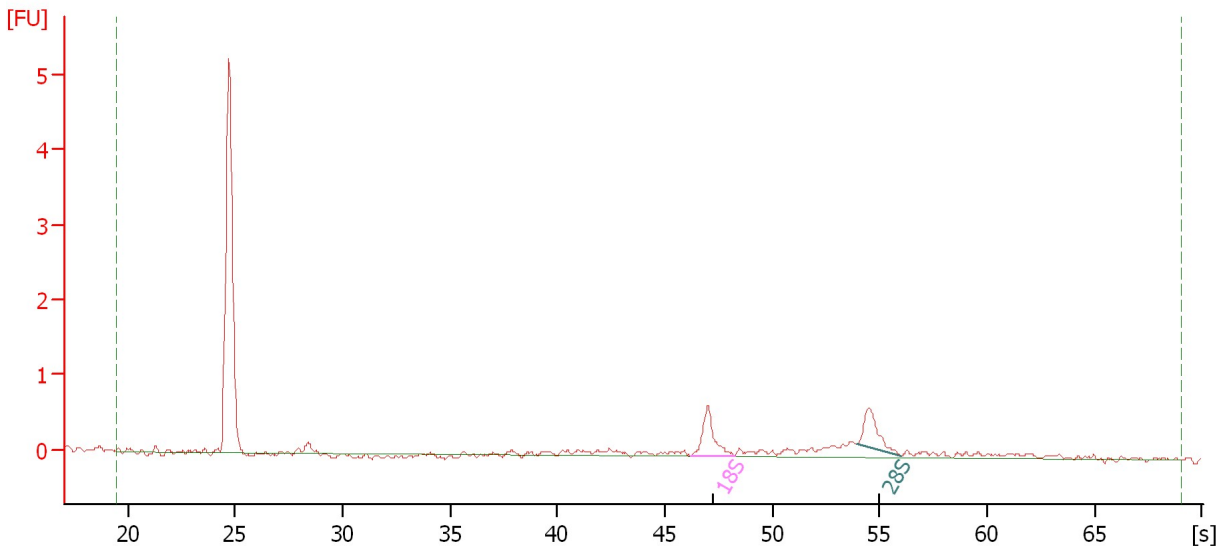
Name	Start Size [nt]	End Size [nt]	Area	% of total Area
18S	0	0	2.3	11.6
28S	0	0	2.2	11.0

Assay Class: Eukaryote Total RNA Nano
 Data Path: C:\...ents and Settings\Bioanalyzer\2013-01-31\2013-01-31_002.xad

Created: 1/31/2013 12:51:31 PM
 Modified: 1/31/2013 1:17:26 PM

Electropherogram Summary Continued ...

Sample 9



Overall Results for sample 6 : Sample 9

RNA Area:	12.7	RNA Integrity Number (RIN):	8.8 (B.02.08)
RNA Concentration:	467 ng/μl	Result Flagging Color:	
rRNA Ratio [28s / 18s]:	0.9	Result Flagging Label:	RIN: 8.80

Fragment table for sample 6 : Sample 9

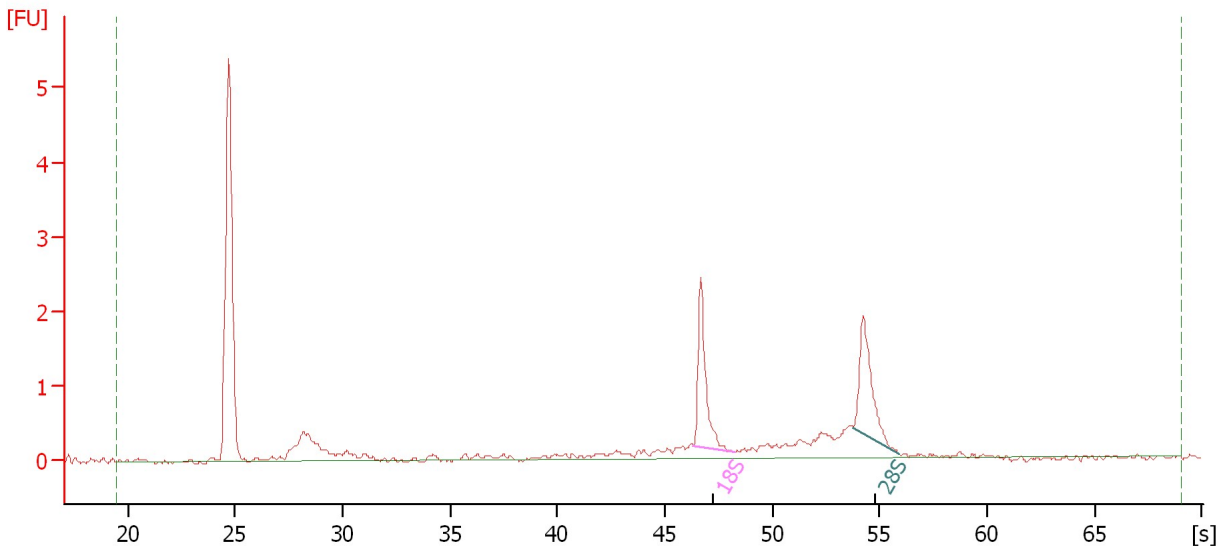
Name	Start Size [nt]	End Size [nt]	Area	% of total Area
18S	0	0	0.8	6.3
28S	0	0	0.7	5.5

Assay Class: Eukaryote Total RNA Nano
Data Path: C:\...ents and Settings\Bioanalyzer\2013-01-31\2013-01-31_002.xad

Created: 1/31/2013 12:51:31 PM
Modified: 1/31/2013 1:17:26 PM

Electropherogram Summary Continued ...

Sample 10



Overall Results for sample 7 : Sample 10

RNA Area: 20.5 RNA Integrity Number (RIN): 8.5 (B.02.08)
RNA Concentration: 752 ng/μl Result Flagging Color:
rRNA Ratio [28s / 18s]: 0.9 Result Flagging Label: RIN: 8.50

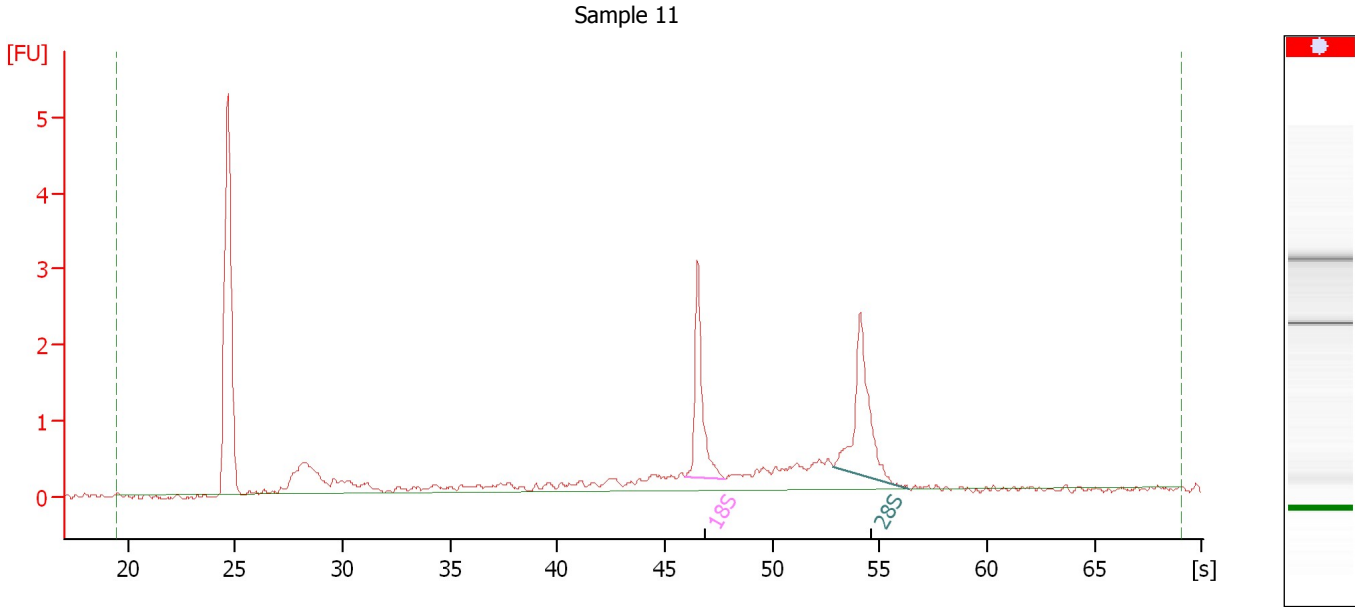
Fragment table for sample 7 : Sample 10

Name	Start Size [nt]	End Size [nt]	Area	% of total Area
18S	0	0	2.0	9.7
28S	0	0	1.9	9.2

Assay Class: Eukaryote Total RNA Nano
Data Path: C:\...ents and Settings\Bioanalyzer\2013-01-31\2013-01-31_002.xad

Created: 1/31/2013 12:51:31 PM
Modified: 1/31/2013 1:17:26 PM

Electropherogram Summary Continued ...



Overall Results for sample 8 : Sample 11

RNA Area: 15.7 RNA Integrity Number (RIN): 8.1 (B.02.08)
RNA Concentration: 574 ng/μl Result Flagging Color:
rRNA Ratio [28s / 18s]: 1.2 Result Flagging Label: RIN: 8.10

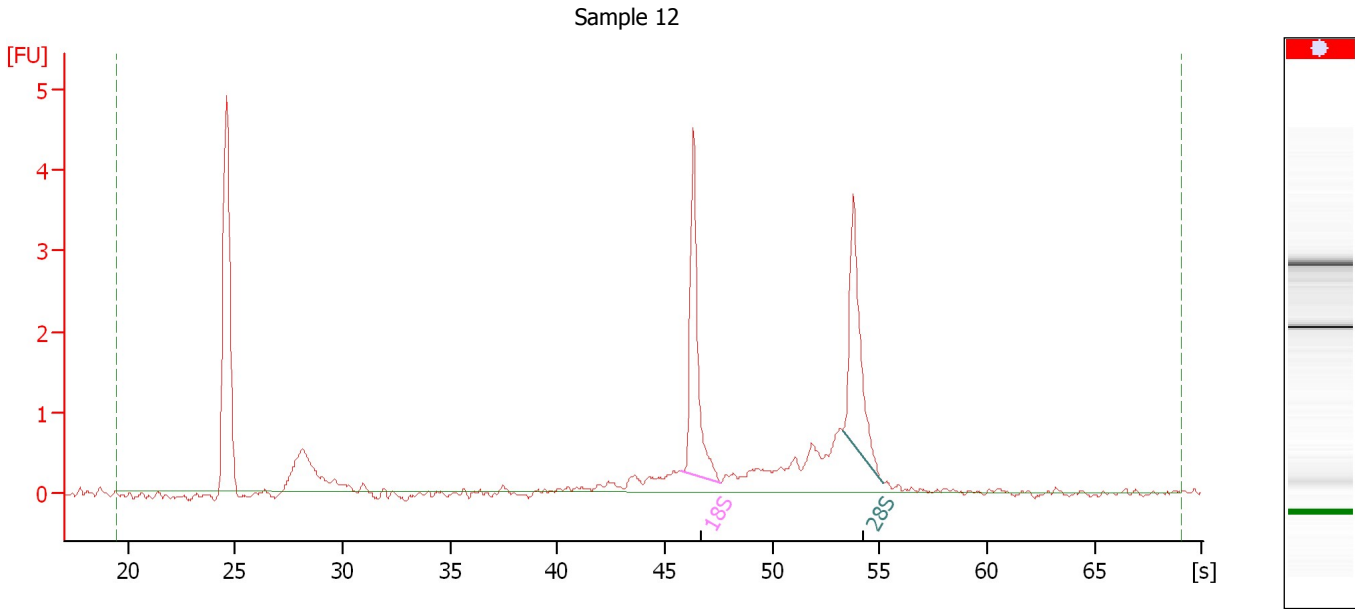
Fragment table for sample 8 : Sample 11

Name	Start Size [nt]	End Size [nt]	Area	% of total Area
18S	0	0	2.5	15.8
28S	0	0	3.1	19.6

Assay Class: Eukaryote Total RNA Nano
 Data Path: C:\...ents and Settings\Bioanalyzer\2013-01-31\2013-01-31_002.xad

Created: 1/31/2013 12:51:31 PM
 Modified: 1/31/2013 1:17:26 PM

Electropherogram Summary Continued ...



Overall Results for sample 9 : Sample 12

RNA Area:	17.5	RNA Integrity Number (RIN):	8.5 (B.02.08)
RNA Concentration:	641 ng/μl	Result Flagging Color:	
rRNA Ratio [28s / 18s]:	0.9	Result Flagging Label:	RIN: 8.50

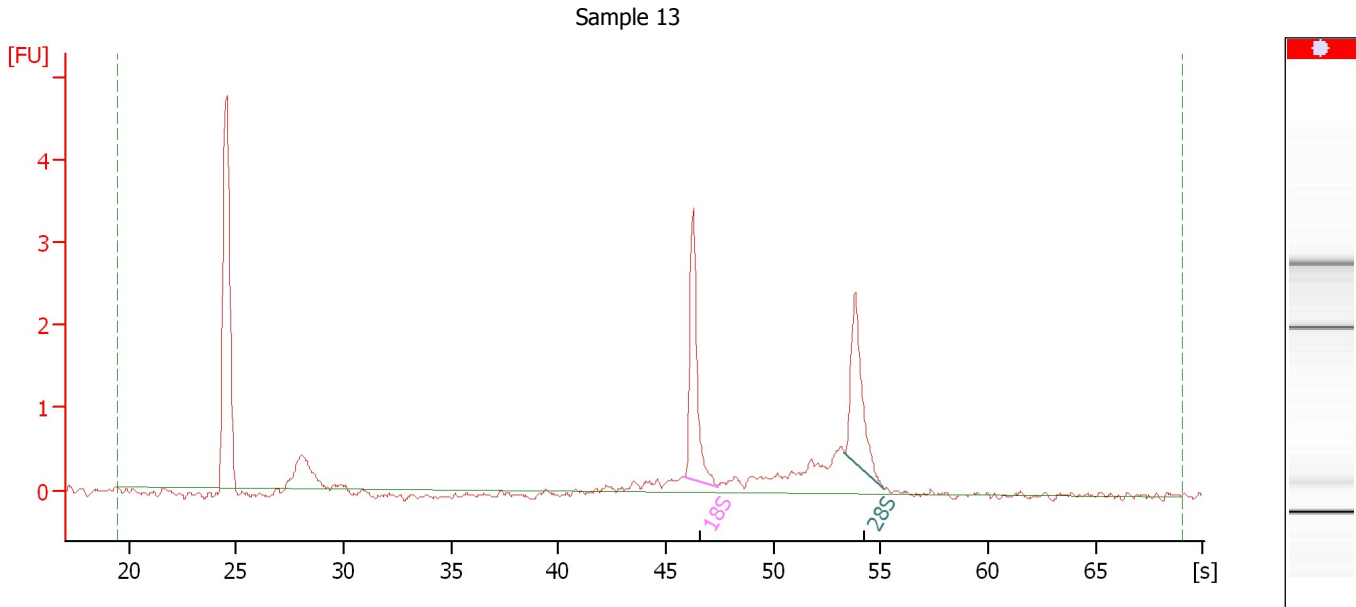
Fragment table for sample 9 : Sample 12

Name	Start Size [nt]	End Size [nt]	Area	% of total Area
18S	0	0	3.6	20.4
28S	0	0	3.2	18.0

Assay Class: Eukaryote Total RNA Nano
 Data Path: C:\...ents and Settings\Bioanalyzer\2013-01-31\2013-01-31_002.xad

Created: 1/31/2013 12:51:31 PM
 Modified: 1/31/2013 1:17:26 PM

Electropherogram Summary Continued ...



Overall Results for sample 10 : Sample 13

RNA Area:	17.9	RNA Integrity Number (RIN):	8.9 (B.02.08)
RNA Concentration:	656 ng/μl	Result Flagging Color:	
rRNA Ratio [28s / 18s]:	0.9	Result Flagging Label:	RIN: 8.90

Fragment table for sample 10 : Sample 13

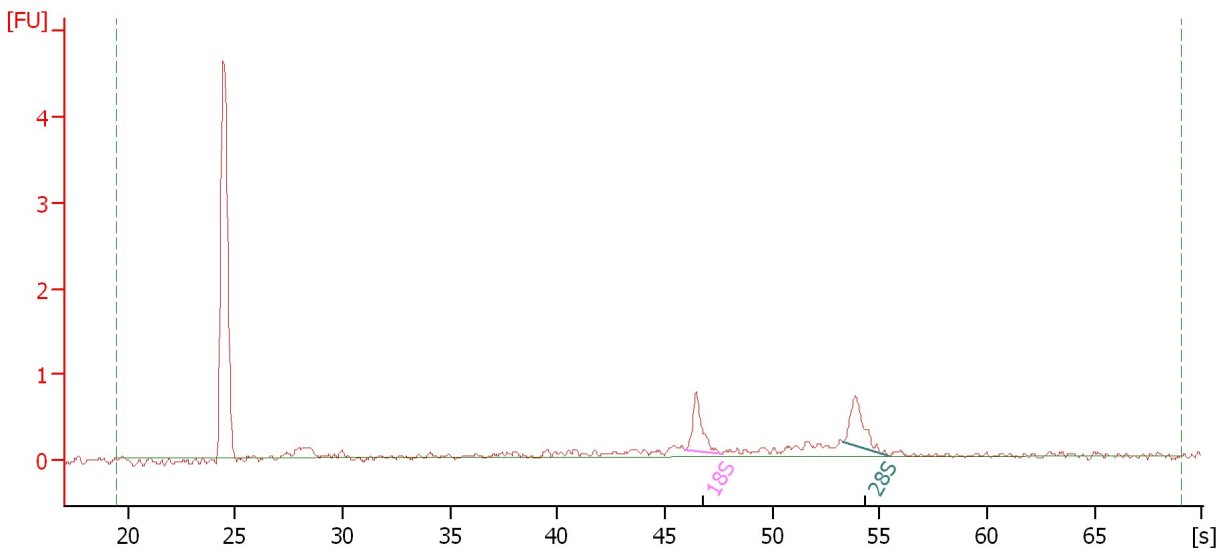
Name	Start Size [nt]	End Size [nt]	Area	% of total Area
18S	0	0	2.6	14.4
28S	0	0	2.2	12.5

Assay Class: Eukaryote Total RNA Nano
Data Path: C:\...ents and Settings\Bioanalyzer\2013-01-31\2013-01-31_002.xad

Created: 1/31/2013 12:51:31 PM
Modified: 1/31/2013 1:17:26 PM

Electropherogram Summary Continued ...

Sample 14



Overall Results for sample 11 : Sample 14

RNA Area: 11.7 RNA Integrity Number (RIN): 7.7 (B.02.08)
RNA Concentration: 429 ng/μl Result Flagging Color:
rRNA Ratio [28s / 18s]: 1.1 Result Flagging Label: RIN: 7.70

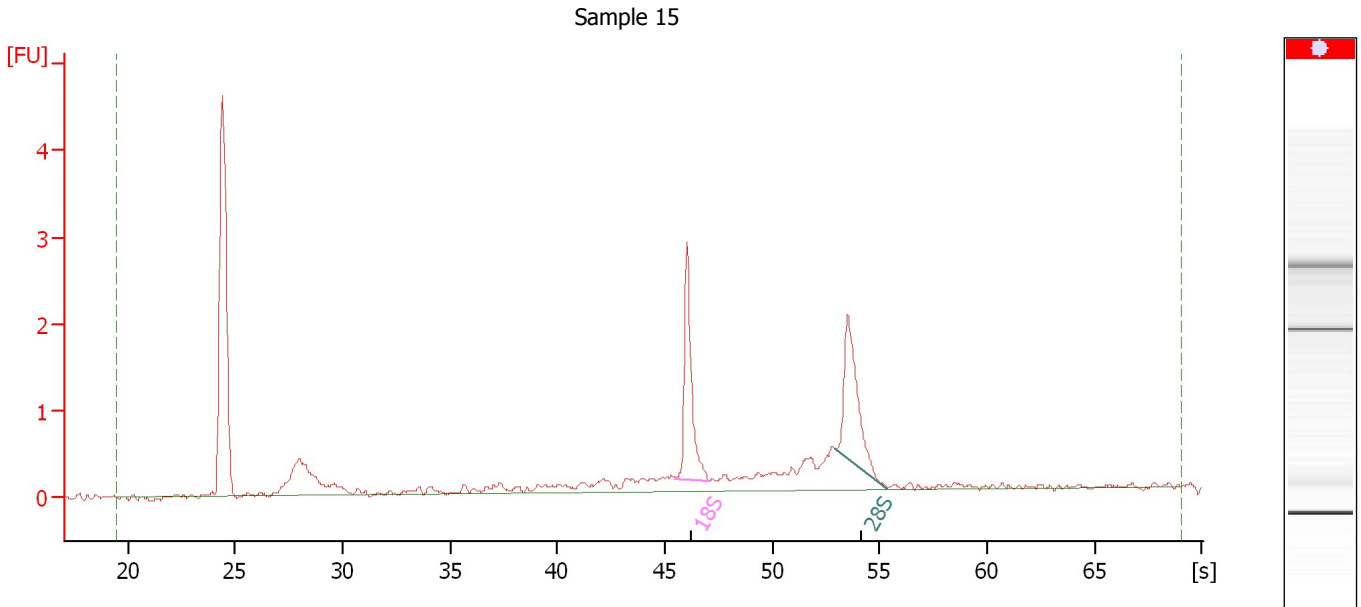
Fragment table for sample 11 : Sample 14

Name	Start Size [nt]	End Size [nt]	Area	% of total Area
18S	0	0	0.7	6.3
28S	0	0	0.8	6.6

Assay Class: Eukaryote Total RNA Nano
Data Path: C:\...ents and Settings\Bioanalyzer\2013-01-31\2013-01-31_002.xad

Created: 1/31/2013 12:51:31 PM
Modified: 1/31/2013 1:17:26 PM

Electropherogram Summary Continued ...



Overall Results for sample 12 : Sample 15

RNA Area:	21.0	RNA Integrity Number (RIN):	8.3 (B.02.08)
RNA Concentration:	771 ng/μl	Result Flagging Color:	
rRNA Ratio [28s / 18s]:	1.0	Result Flagging Label:	RIN: 8.30

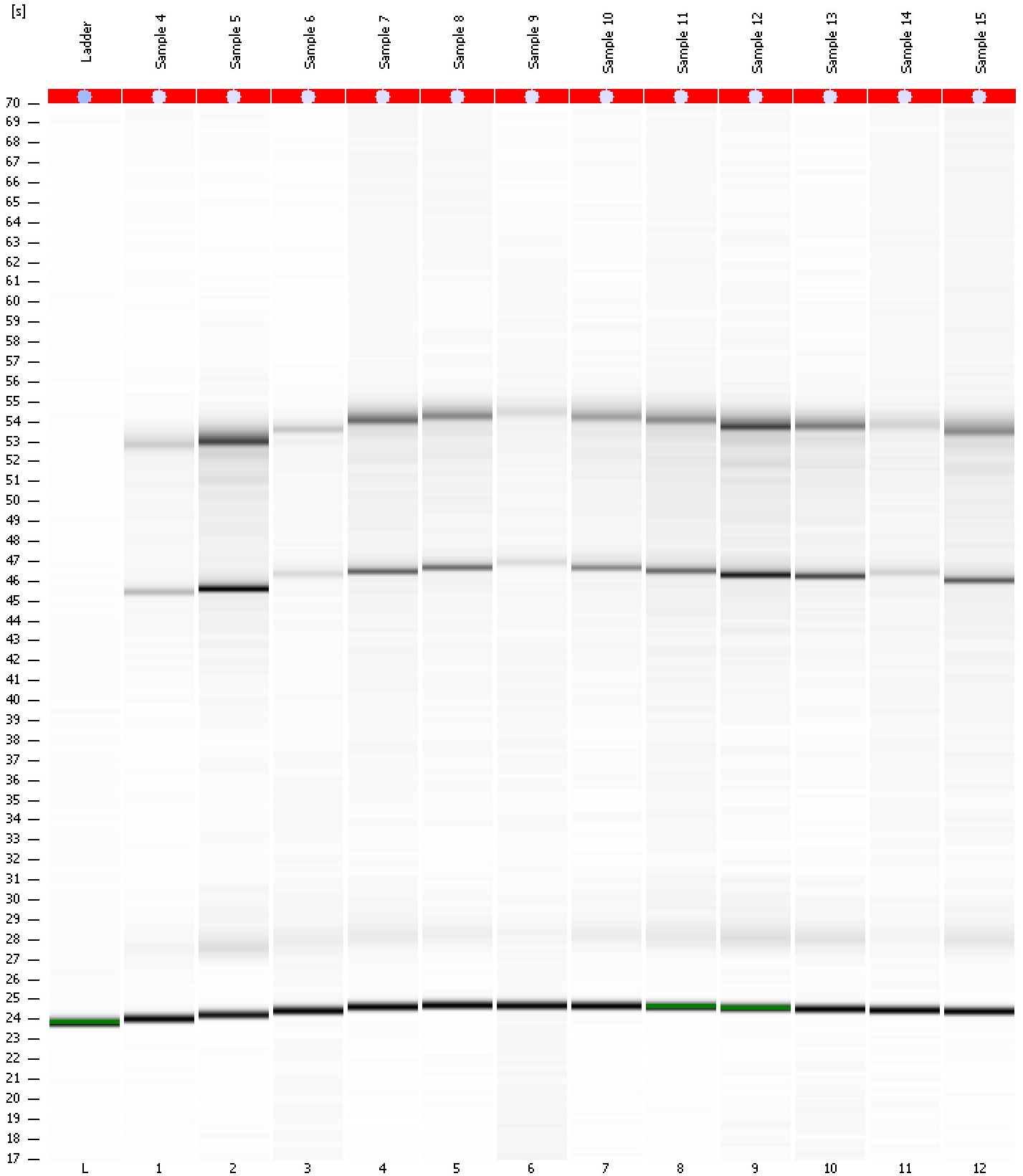
Fragment table for sample 12 : Sample 15

Name	Start Size [nt]	End Size [nt]	Area	% of total Area
18S	0	0	2.3	10.7
28S	0	0	2.2	10.4

Assay Class: Eukaryote Total RNA Nano
Data Path: C:\...ents and Settings\Bioanalyzer\2013-01-31\2013-01-31_002.xad

Created: 1/31/2013 12:51:31 PM
Modified: 1/31/2013 1:17:26 PM

Gel Image



Assay Class: Eukaryote Total RNA Nano
 Data Path: C:\...ents and Settings\Bioanalyzer\2013-01-31\2013-01-31_002.xad

Created: 1/31/2013 12:51:31 PM
 Modified: 1/31/2013 1:17:26 PM

Run Logbook

Description	Number	Source	Category	Sub Category	Time	Time Zone	User	Host
Run ended on port 1 (Number of wells acquired: 13)		Instrument	Run		1/31/2013 1:15:17 PM	(GMT --08:00) Pacific Standard Time	UC Davis	D8XSMGH1
Run started on port 1 (File: C:\Documents and Settings\Bioanalyzer\2013-01-31\2013-01-31_002.xad)		Instrument	Run		1/31/2013 12:51:36 PM	(GMT --08:00) Pacific Standard Time	UC Davis	D8XSMGH1
Product Number : G2938B		Instrument	Run		1/31/2013 12:51:36 PM	(GMT --08:00) Pacific Standard Time	UC Davis	D8XSMGH1
Name :		Instrument	Run		1/31/2013 12:51:36 PM	(GMT --08:00) Pacific Standard Time	UC Davis	D8XSMGH1
Vendor : Agilent Technologies		Instrument	Run		1/31/2013 12:51:36 PM	(GMT --08:00) Pacific Standard Time	UC Davis	D8XSMGH1
Serial# : DE13701086		Instrument	Run		1/31/2013 12:51:36 PM	(GMT --08:00) Pacific Standard Time	UC Davis	D8XSMGH1
Firmware : C.01.069		Instrument	Run		1/31/2013 12:51:36 PM	(GMT --08:00) Pacific Standard Time	UC Davis	D8XSMGH1
Cartridge : Electrode		Instrument	Run		1/31/2013 12:51:36 PM	(GMT --08:00) Pacific Standard Time	UC Davis	D8XSMGH1