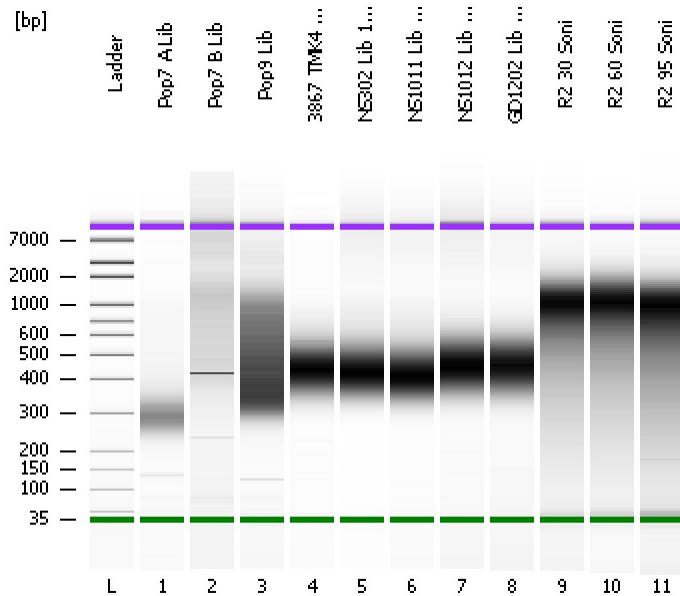


Assay Class: High Sensitivity DNA Assay
Data Path: C:\...ents and Settings\Bioanalyzer\2013-02-01\2013-02-01_002.xad

Created: 2/1/2013 11:54:59 AM
Modified: 2/1/2013 12:42:32 PM

Electrophoresis File Run Summary



Instrument Information:

Instrument Name: DE13701086 Firmware: C.01.069
Serial#: DE13701086 Type: G2938B

Assay Information:

Assay Origin Path: C:\Program Files\Agilent\2100 bioanalyzer\2100 expert\assays\dsDNA\High Sensitivity DNA.xsy
Assay Class: High Sensitivity DNA Assay
Version: 1.03
Assay Comments: Copyright © 2003-2010 Agilent Technologies

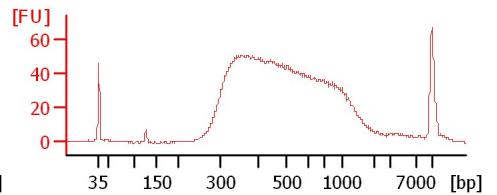
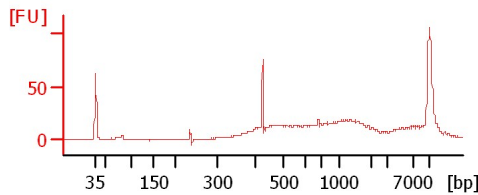
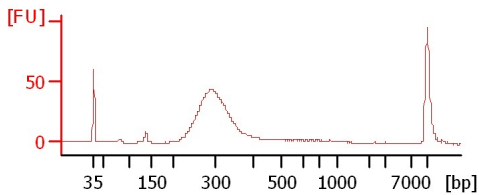
Chip Information:

Chip Lot #:
Reagent Kit Lot #:
Chip Comments:

Pop7 A Lib

Pop7 B Lib

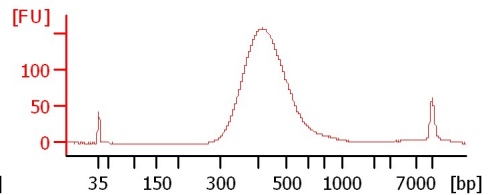
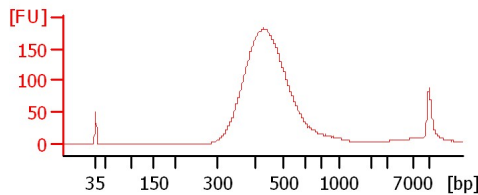
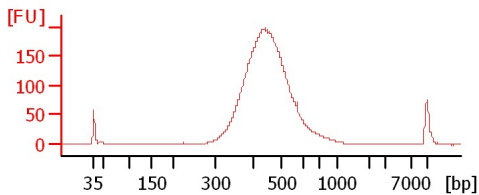
Pop9 Lib



3867 TMK4 T3 Lib 1:4

NS302 Lib 1:16

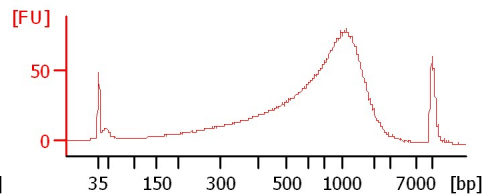
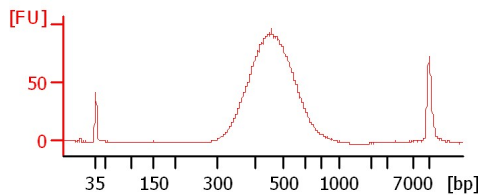
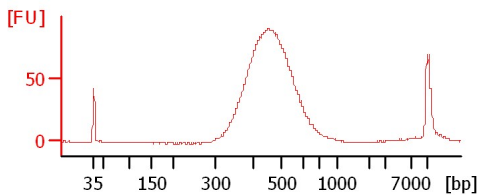
NS1011 Lib 1:17



NS1012 Lib 1:19

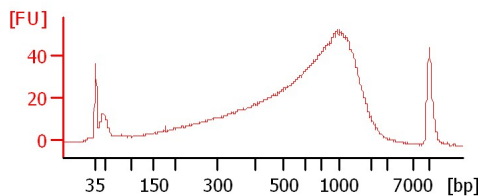
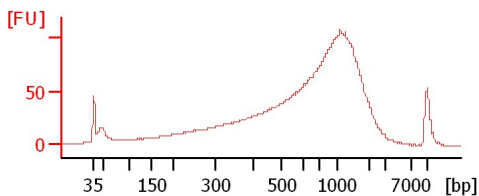
GD1202 Lib 1:18

R2 30 Soni



R2 60 Soni

R2 95 Soni



Assay Class: High Sensitivity DNA Assay
 Data Path: C:\...ents and Settings\Bioanalyzer\2013-02-01\2013-02-01_002.xad

Created: 2/1/2013 11:54:59 AM
 Modified: 2/1/2013 12:42:32 PM

Electrophoresis File Run Summary (Chip Summary)

Sample Name	Sample Comment	Rest. Digest	Status	Observation	Result Label	Result Color
Pop7 A Lib		<input type="checkbox"/>	✓			
Pop7 B Lib		<input type="checkbox"/>	✓			
Pop9 Lib		<input type="checkbox"/>	✓			
3867 TMK4 T3 Lib 1:4		<input type="checkbox"/>	✓			
NS302 Lib 1:16		<input type="checkbox"/>	✓			
NS1011 Lib 1:17		<input type="checkbox"/>	✓			
NS1012 Lib 1:19		<input type="checkbox"/>	✓			
GD1202 Lib 1:18		<input type="checkbox"/>	✓			
R2 30 Soni		<input type="checkbox"/>	✓			
R2 60 Soni		<input type="checkbox"/>	✓			
R2 95 Soni		<input type="checkbox"/>	✓			
Ladder		<input type="checkbox"/>	✓			

Chip Lot #

Reagent Kit Lot #

Chip Comments :

Assay Class: High Sensitivity DNA Assay
Data Path: C:\...ents and Settings\Bioanalyzer\2013-02-01\2013-02-01_002.xad

Created: 2/1/2013 11:54:59 AM
Modified: 2/1/2013 12:42:32 PM

Electrophoresis Assay Details

General Analysis Settings

Number of Available Sample and Ladder Wells (Max.) : 12
Minimum Visible Range [s] : 32
Maximum Visible Range [s] : 138
Start Analysis Time Range [s] : 33
End Analysis Time Range [s] : 137.5
Ladder Concentration [pg/μl] : 1950
Uses Standard Area for Ladder Fragments
Lower Marker Concentration [pg/μl] : 125
Upper Marker Concentration [pg/μl] : 75
Used Upper Marker for Quantitation
Standard Curve Fit is Point to Point
Show Data Aligned to Lower and Upper Marker

Integrator Settings

Integration Start Time [s] : 33.05
Integration End Time [s] : 137
Slope Threshold : 0.8
Height Threshold [FU] : 5
Area Threshold : 0.1
Width Threshold [s] : 0.6
Baseline Plateau [s] : 0.5

Filter Settings

Filter Width [s] : 0.5
Polynomial Order : 4

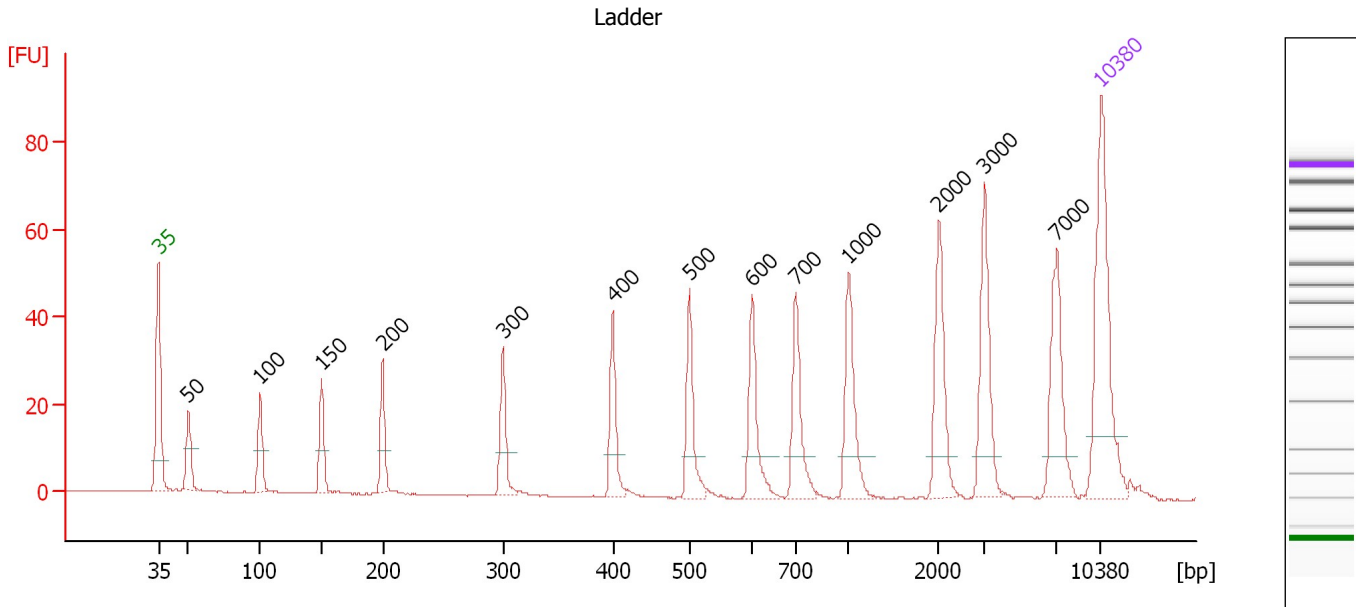
Ladder

Ladder Peak	Size	Area
1	35	160
2	50	210
3	100	208
4	150	221
5	200	242
6	300	270
7	400	305
8	500	306
9	600	336
10	700	321
11	1000	366
12	2000	413
13	3000	411
14	7000	400
15	10380	214

Assay Class: High Sensitivity DNA Assay
 Data Path: C:\...ents and Settings\Bioanalyzer\2013-02-01\2013-02-01_002.xad

Created: 2/1/2013 11:54:59 AM
 Modified: 2/1/2013 12:42:32 PM

Electropherogram Summary



Overall Results for Ladder

Noise: 0.1

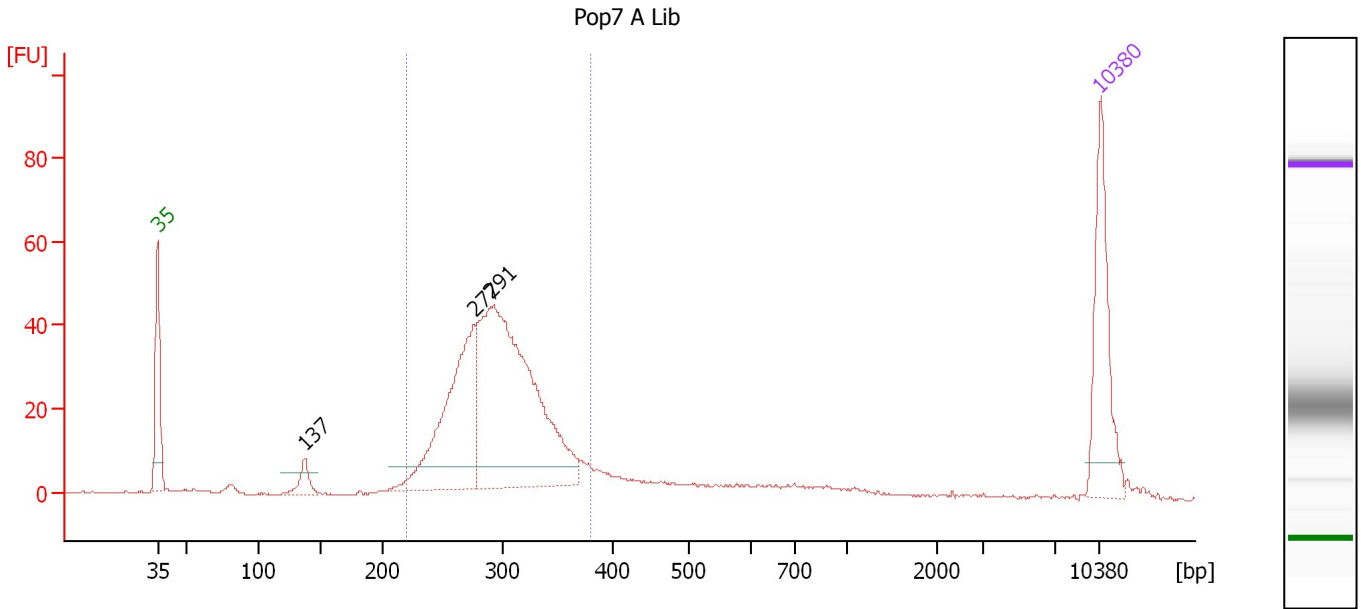
Peak table for Ladder

Peak	Size [bp]	Conc. [pg/μl]	Molarity [pmol/l]	Observations
1	35	125.00	5,411.3	Lower Marker
2	50	150.00	4,545.5	Ladder Peak
3	100	150.00	2,272.7	Ladder Peak
4	150	150.00	1,515.2	Ladder Peak
5	200	150.00	1,136.4	Ladder Peak
6	300	150.00	757.6	Ladder Peak
7	400	150.00	568.2	Ladder Peak
8	500	150.00	454.5	Ladder Peak
9	600	150.00	378.8	Ladder Peak
10	700	150.00	324.7	Ladder Peak
11	1,000	150.00	227.3	Ladder Peak
12	2,000	150.00	113.6	Ladder Peak
13	3,000	150.00	75.8	Ladder Peak
14	7,000	150.00	32.5	Ladder Peak
15	10,380	75.00	10.9	Upper Marker

Assay Class: High Sensitivity DNA Assay
 Data Path: C:\...ents and Settings\Bioanalyzer\2013-02-01\2013-02-01_002.xad

Created: 2/1/2013 11:54:59 AM
 Modified: 2/1/2013 12:42:32 PM

Electropherogram Summary Continued ...



Overall Results for sample 1 : Pop7 A Lib

Number of peaks found: 3 Corr. Area 1: 515.9
 Noise: 0.2

Peak table for sample 1 : Pop7 A Lib

Peak	Size [bp]	Conc. [pg/μl]	Molarity [pmol/l]	Observations
1	35	125.00	5,411.3	Lower Marker
2	137	20.80	229.8	
3	277	196.61	1,077.0	
4	291	386.50	2,010.9	
5	10,380	75.00	10.9	Upper Marker

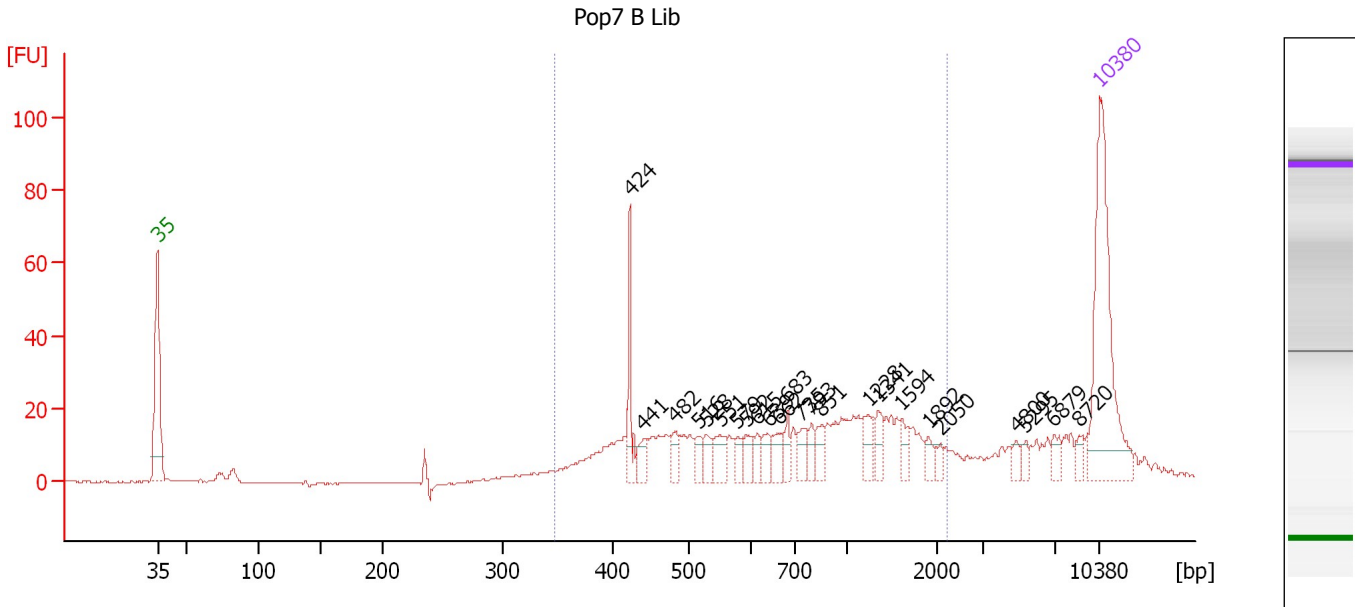
Region table for sample 1 : Pop7 A Lib

From [bp]	To [bp]	Average Size [bp]	Molarity [pmol/l]	Conc. [pg/μl]	Corr. Area	% of Total	Size distribution in CV [%]	Color
221	381	297	3,241.3	626.30	515.9	79	11.4	Blue

Assay Class: High Sensitivity DNA Assay
 Data Path: C:\...ents and Settings\Bioanalyzer\2013-02-01\2013-02-01_002.xad

Created: 2/1/2013 11:54:59 AM
 Modified: 2/1/2013 12:42:32 PM

Electropherogram Summary Continued ...



Setpoint Deviations for sample 2 : Pop7 B Lib

Height Threshold [FU] : 10

Overall Results for sample 2 : Pop7 B Lib

Number of peaks found: 24 Corr. Area 1: 445.9
 Noise: 0.1

Peak table for sample 2 : Pop7 B Lib

Peak	Size [bp]	Conc. [pg/μl]	Molarity [pmol/l]	Observations
1	35	125.00	5,411.3	Lower Marker
2	424	24.48	87.5	
3	441	9.31	32.0	
4	482	8.78	27.6	
5	516	7.90	23.2	
6	528	8.42	24.2	
7	551	11.86	32.6	
8	579	6.54	17.1	
9	592	8.60	22.0	
10	615	6.60	16.3	
11	639	8.27	19.6	
12	662	10.57	24.2	
13	683	7.98	17.7	
14	735	10.15	20.9	
15	793	7.38	14.1	
16	851	8.38	14.9	
17	1,228	10.42	12.8	
18	1,341	9.35	10.6	
19	1,594	7.72	7.3	
20	1,892	5.58	4.5	
21	2,050	3.82	2.8	
22	4,800	4.12	1.3	

Assay Class: High Sensitivity DNA Assay
 Data Path: C:\...ents and Settings\Bioanalyzer\2013-02-01\2013-02-01_002.xad

Created: 2/1/2013 11:54:59 AM
 Modified: 2/1/2013 12:42:32 PM

Electropherogram Summary Continued ...

... Peak table for sample 2 : Pop7 B Lib

Peak	Size [bp]	Conc. [pg/μl]	Molarity [pmol/l]	Observations
23	5,295	4.06	1.2	
24	6,879	4.99	1.1	
25	8,720	4.17	0.7	
26	10,380	75.00	10.9	Upper Marker

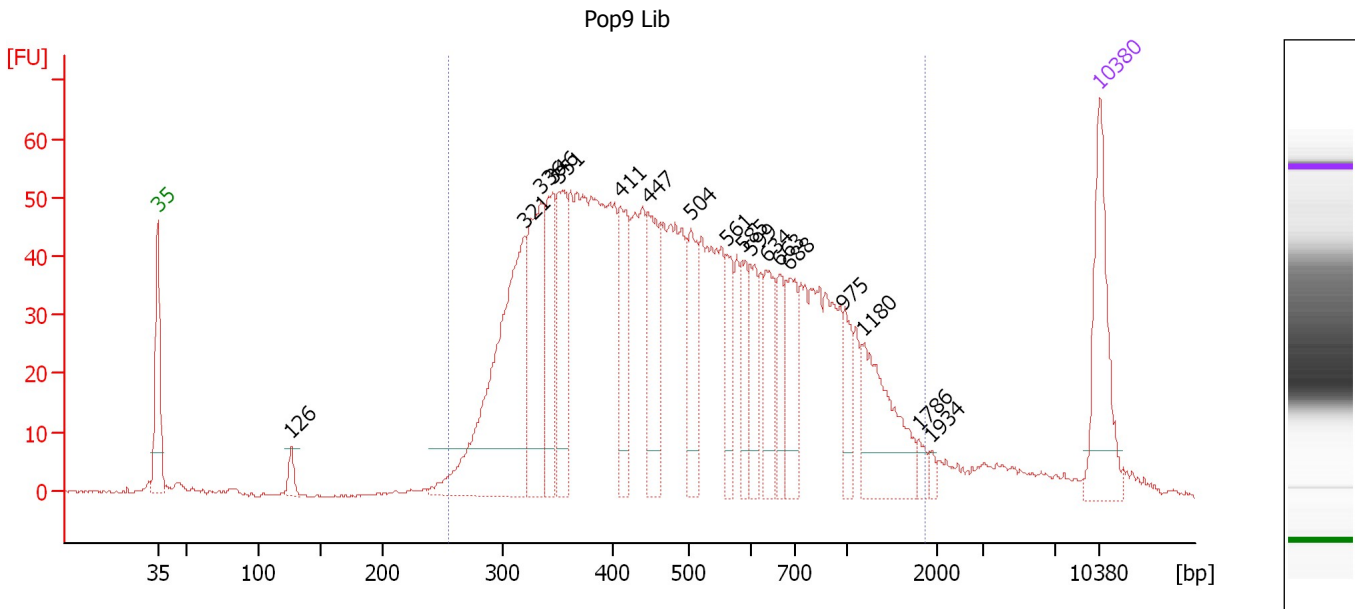
Region table for sample 2 : Pop7 B Lib

From [bp]	To [bp]	Average Size [bp]	Molarity [pmol/l]	Conc. [pg/μl]	Corr. Area	% of Total	Size distribution in CV [%]	Color
348	2,182	852	838.6	342.53	445.9	76	54.6	

Assay Class: High Sensitivity DNA Assay
 Data Path: C:\...ents and Settings\Bioanalyzer\2013-02-01\2013-02-01_002.xad

Created: 2/1/2013 11:54:59 AM
 Modified: 2/1/2013 12:42:32 PM

Electropherogram Summary Continued ...



Setpoint Deviations for sample 3 : Pop9 Lib

Height Threshold [FU] : 8

Overall Results for sample 3 : Pop9 Lib

Number of peaks found: 18 Corr. Area 1: 1,625.6
 Noise: 0.3

Peak table for sample 3 : Pop9 Lib

Peak	Size [bp]	Conc. [pg/μl]	Molarity [pmol/l]	Observations
1	35	125.00	5,411.3	Lower Marker
2	126	15.55	187.4	
3	321	284.08	1,341.5	
4	336	144.41	651.7	
5	346	90.06	394.1	
6	351	95.46	411.9	
7	411	79.43	293.1	
8	447	83.02	281.4	
9	504	63.48	190.8	
10	561	38.71	104.5	
11	585	36.42	94.3	
12	599	37.88	95.8	
13	634	52.78	126.1	
14	663	36.38	83.1	
15	688	56.50	124.4	
16	975	30.73	47.8	
17	1,180	90.57	116.3	
18	1,786	8.18	6.9	
19	1,934	5.20	4.1	
20	10,380	75.00	10.9	Upper Marker

Assay Class: High Sensitivity DNA Assay
Data Path: C:\...ents and Settings\Bioanalyzer\2013-02-01\2013-02-01_002.xad

Created: 2/1/2013 11:54:59 AM
Modified: 2/1/2013 12:42:32 PM

Electropherogram Summary Continued ...

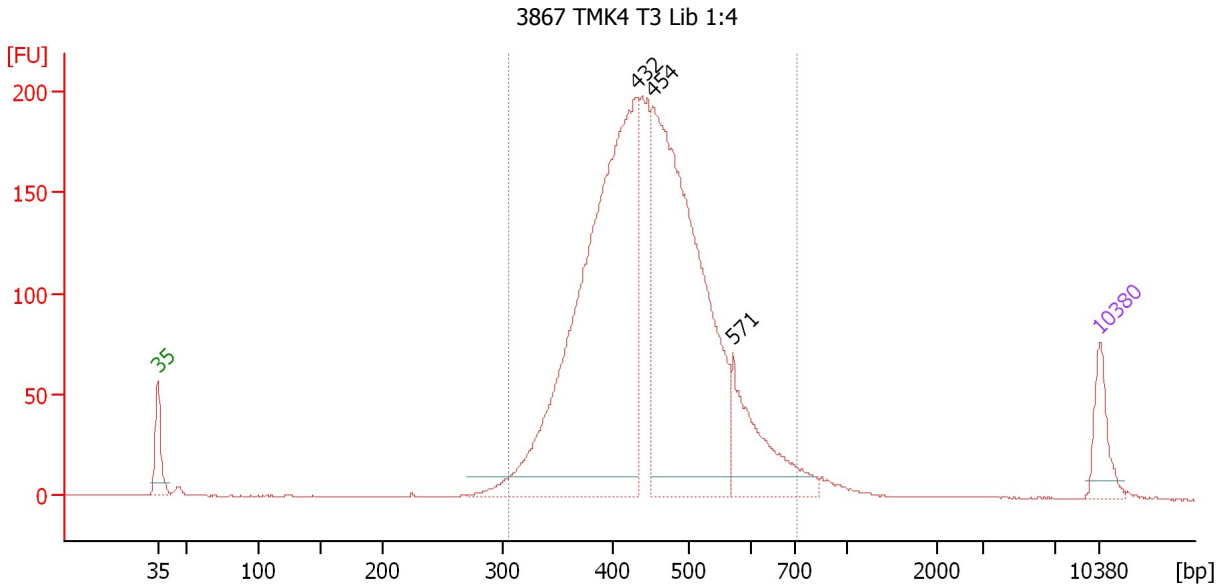
... Region table for sample 3 : Pop9 Lib

From [bp]	To [bp]	Average Size [bp]	Molarity [pmol/l]	Conc. [pg/μl]	Corr. Area	% of Total	Size distribution in CV [%]	Color
256	1,850	564	7,745.6	2,284.64	1,625.6	94	51.6	■

Assay Class: High Sensitivity DNA Assay
 Data Path: C:\...ents and Settings\Bioanalyzer\2013-02-01\2013-02-01_002.xad

Created: 2/1/2013 11:54:59 AM
 Modified: 2/1/2013 12:42:32 PM

Electropherogram Summary Continued ...



Setpoint Deviations for sample 4 : 3867 TMK4 T3 Lib 1:4

Height Threshold [FU] : 10

Overall Results for sample 4 : 3867 TMK4 T3 Lib 1:4

Number of peaks found: 3 Corr. Area 1: 2,704.9
 Noise: 0.3

Peak table for sample 4 : 3867 TMK4 T3 Lib 1:4

Peak	Size [bp]	Conc. [pg/µl]	Molarity [pmol/l]	Observations
1	35	125.00	5,411.3	Lower Marker
2	432	1,693.38	5,941.9	
3	454	1,371.57	4,581.9	
4	571	273.32	724.9	
5	10,380	75.00	10.9	Upper Marker

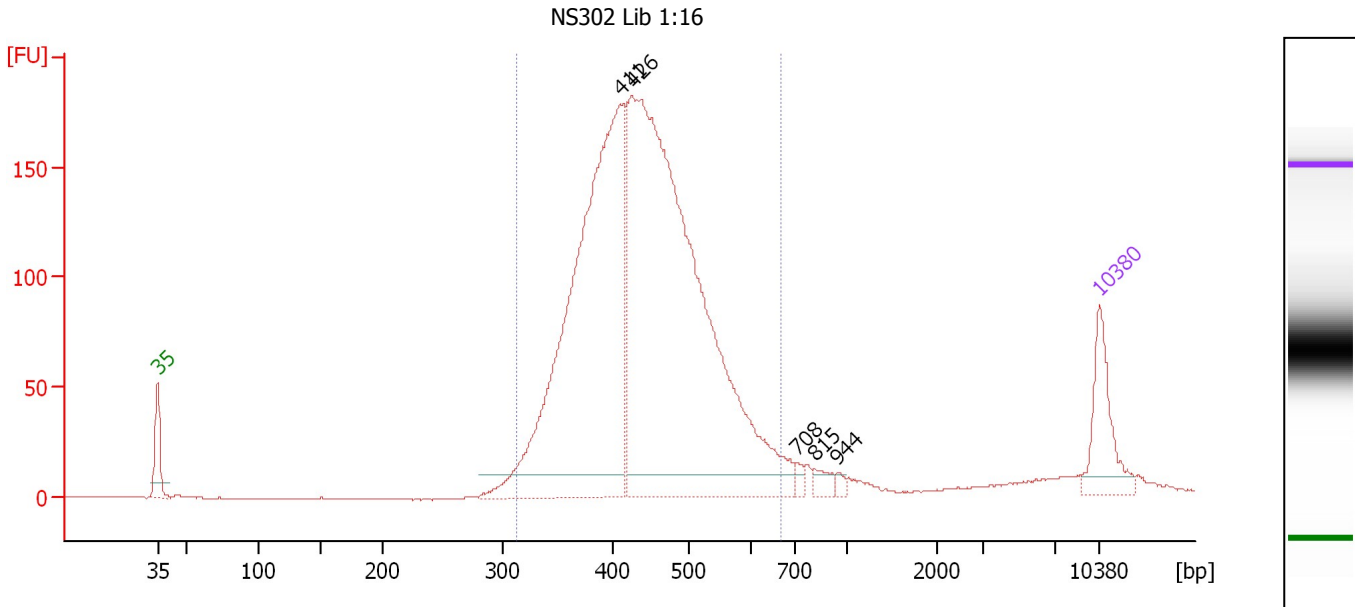
Region table for sample 4 : 3867 TMK4 T3 Lib 1:4

From [bp]	To [bp]	Average Size [bp]	Molarity [pmol/l]	Conc. [pg/µl]	Corr. Area	% of Total	Size distribution in CV [%]	Color
306	715	453	12,652.4	3,657.72	2,704.8	96	16.4	Blue

Assay Class: High Sensitivity DNA Assay
 Data Path: C:\...ents and Settings\Bioanalyzer\2013-02-01\2013-02-01_002.xad

Created: 2/1/2013 11:54:59 AM
 Modified: 2/1/2013 12:42:32 PM

Electropherogram Summary Continued ...



Setpoint Deviations for sample 5 : NS302 Lib 1:16

Height Threshold [FU] : 10

Overall Results for sample 5 : NS302 Lib 1:16

Number of peaks found: 5 Corr. Area 1: 2,503.1
 Noise: 0.2

Peak table for sample 5 : NS302 Lib 1:16

Peak	Size [bp]	Conc. [pg/μl]	Molarity [pmol/l]	Observations
1	35	125.00	5,411.3	Lower Marker
2	411	969.29	3,575.8	
3	426	1,349.81	4,798.4	
4	708	9.98	21.3	
5	815	15.90	29.6	
6	944	6.99	11.2	
7	10,380	75.00	10.9	Upper Marker

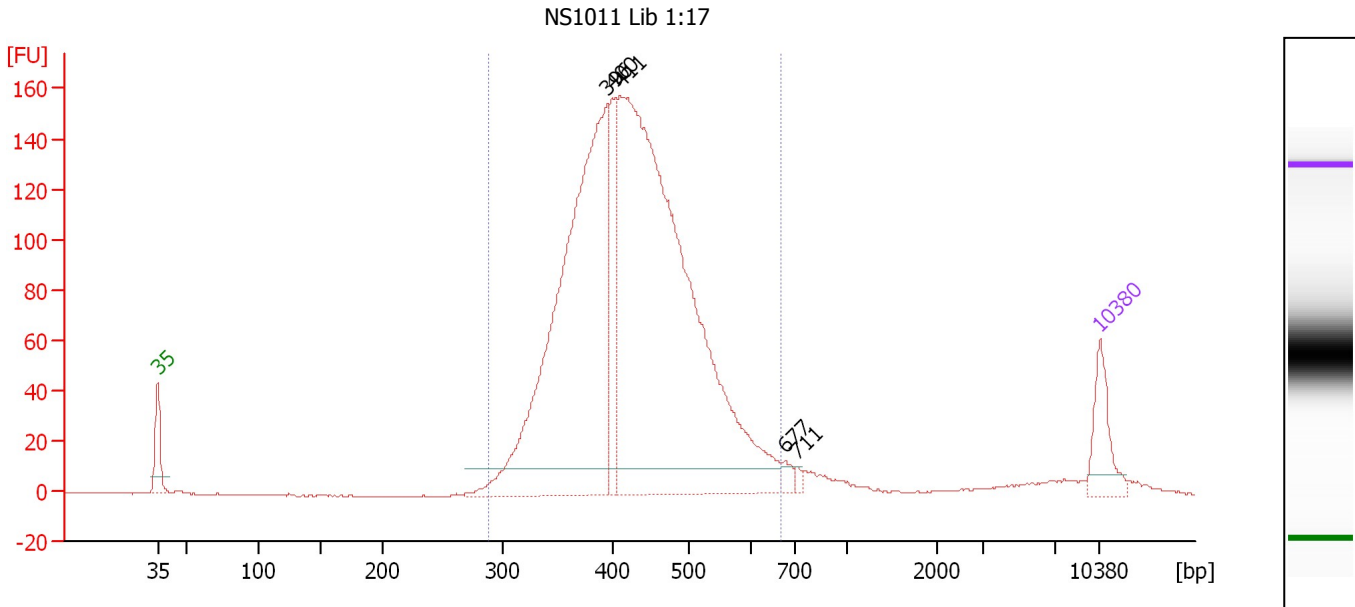
Region table for sample 5 : NS302 Lib 1:16

From [bp]	To [bp]	Average Size [bp]	Molarity [pmol/l]	Conc. [pg/μl]	Corr. Area	% of Total	Size distribution in CV [%]	Color
314	668	444	8,016.6	2,279.83	2,503.1	91	15.8	Blue

Assay Class: High Sensitivity DNA Assay
 Data Path: C:\...ents and Settings\Bioanalyzer\2013-02-01\2013-02-01_002.xad

Created: 2/1/2013 11:54:59 AM
 Modified: 2/1/2013 12:42:32 PM

Electropherogram Summary Continued ...



Setpoint Deviations for sample 6 : NS1011 Lib 1:17

Height Threshold [FU] : 10

Overall Results for sample 6 : NS1011 Lib 1:17

Number of peaks found: 5 Corr. Area 1: 2,229.7
 Noise: 0.2

Peak table for sample 6 : NS1011 Lib 1:17

Peak	Size [bp]	Conc. [pg/μl]	Molarity [pmol/l]	Observations
1	35	125.00	5,411.3	Lower Marker
2	396	1,230.89	4,712.9	
3	400	183.27	693.5	
4	411	1,829.67	6,743.9	
5	677	16.31	36.5	
6	711	8.89	18.9	
7	10,380	75.00	10.9	Upper Marker

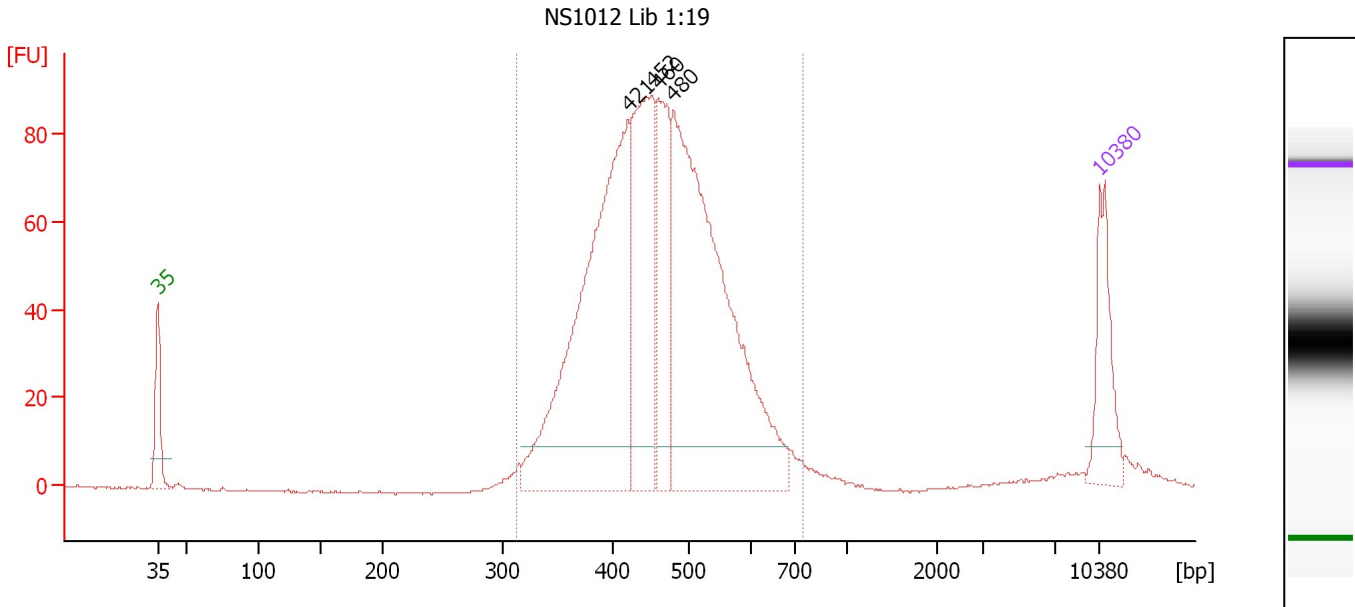
Region table for sample 6 : NS1011 Lib 1:17

From [bp]	To [bp]	Average Size [bp]	Molarity [pmol/l]	Conc. [pg/μl]	Corr. Area	% of Total	Size distribution in CV [%]	Color
290	668	431	11,780.9	3,246.63	2,229.7	93	16.2	Blue

Assay Class: High Sensitivity DNA Assay
 Data Path: C:\...ents and Settings\Bioanalyzer\2013-02-01\2013-02-01_002.xad

Created: 2/1/2013 11:54:59 AM
 Modified: 2/1/2013 12:42:32 PM

Electropherogram Summary Continued ...



Setpoint Deviations for sample 7 : NS1012 Lib 1:19

Height Threshold [FU] : 10

Overall Results for sample 7 : NS1012 Lib 1:19

Number of peaks found: 4 Corr. Area 1: 1,299.7
 Noise: 0.2

Peak table for sample 7 : NS1012 Lib 1:19

Peak	Size [bp]	Conc. [pg/μl]	Molarity [pmol/l]	Observations
1	35	125.00	5,411.3	Lower Marker
2	421	617.68	2,223.5	
3	452	293.07	981.9	
4	460	167.02	549.6	
5	480	674.64	2,128.4	
6	10,380	75.00	10.9	Upper Marker

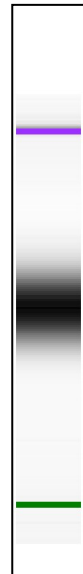
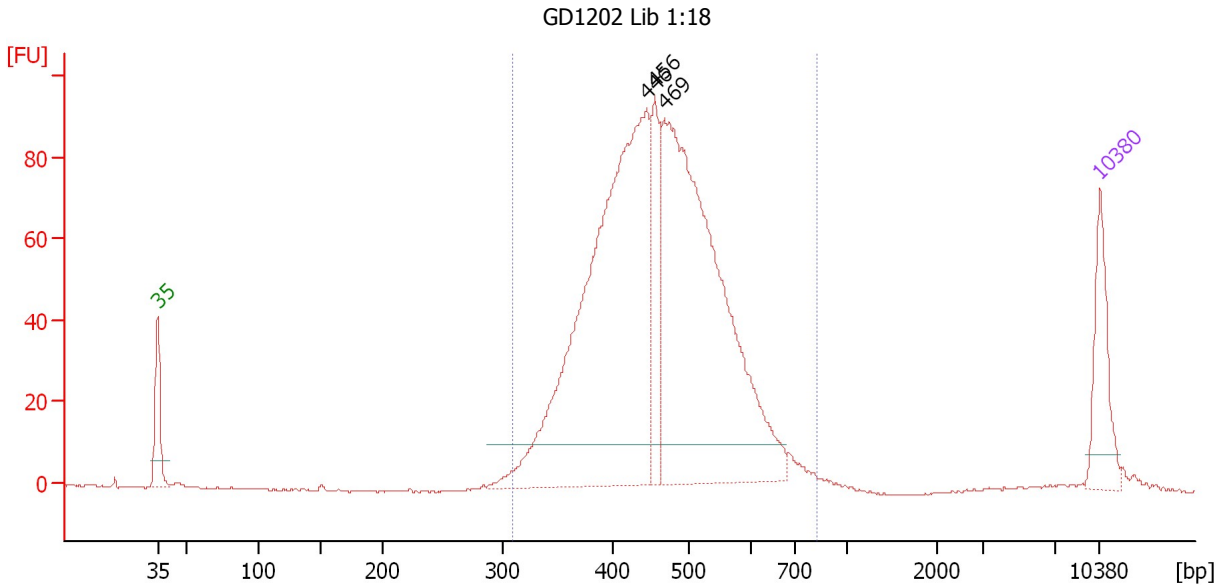
Region table for sample 7 : NS1012 Lib 1:19

From [bp]	To [bp]	Average Size [bp]	Molarity [pmol/l]	Conc. [pg/μl]	Corr. Area	% of Total	Size distribution in CV [%]	Color
314	748	465	6,056.1	1,794.95	1,299.7	92	16.8	Blue

Assay Class: High Sensitivity DNA Assay
 Data Path: C:\...ents and Settings\Bioanalyzer\2013-02-01\2013-02-01_002.xad

Created: 2/1/2013 11:54:59 AM
 Modified: 2/1/2013 12:42:32 PM

Electropherogram Summary Continued ...



Setpoint Deviations for sample 8 : GD1202 Lib 1:18

Height Threshold [FU] : 10

Overall Results for sample 8 : GD1202 Lib 1:18

Number of peaks found: 3 Corr. Area 1: 1,342.7
 Noise: 0.2

Peak table for sample 8 : GD1202 Lib 1:18

Peak	Size [bp]	Conc. [pg/µl]	Molarity [pmol/l]	Observations
1	35	125.00	5,411.3	Lower Marker
2	446	905.85	3,080.1	
3	456	117.37	389.7	
4	469	820.43	2,652.5	
5	10,380	75.00	10.9	Upper Marker

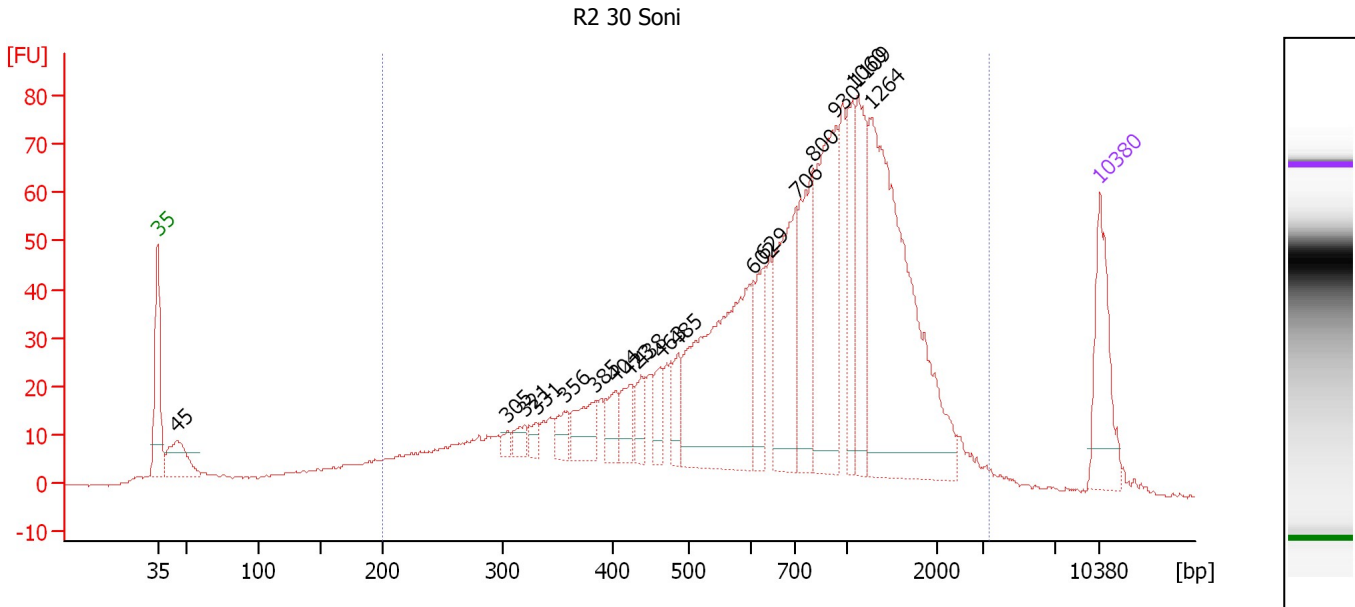
Region table for sample 8 : GD1202 Lib 1:18

From [bp]	To [bp]	Average Size [bp]	Molarity [pmol/l]	Conc. [pg/µl]	Corr. Area	% of Total	Size distribution in CV [%]	Color
310	821	466	6,480.8	1,919.06	1,342.7	96	17.3	Blue

Assay Class: High Sensitivity DNA Assay
 Data Path: C:\...ents and Settings\Bioanalyzer\2013-02-01\2013-02-01_002.xad

Created: 2/1/2013 11:54:59 AM
 Modified: 2/1/2013 12:42:32 PM

Electropherogram Summary Continued ...



Overall Results for sample 9 : R2 30 Soni

Number of peaks found: 19 Corr. Area 1: 1,589.6
 Noise: 0.2

Peak table for sample 9 : R2 30 Soni

Peak	Size [bp]	Conc. [pg/μl]	Molarity [pmol/l]	Observations
1	35	125.00	5,411.3	Lower Marker
2	45	68.59	2,332.0	
3	305	8.34	41.4	
4	321	17.34	81.8	
5	331	13.74	62.9	
6	356	21.55	91.6	
7	385	47.50	186.9	
8	404	30.37	113.8	
9	423	33.43	119.6	
10	438	26.76	92.5	
11	463	25.77	84.3	
12	485	36.99	115.4	
13	602	268.09	674.2	
14	629	57.95	139.7	
15	706	149.58	321.2	
16	800	109.24	207.0	
17	930	185.03	301.6	
18	1,060	66.03	94.4	
19	1,109	99.98	136.5	
20	1,264	364.70	437.1	
21	10,380	75.00	10.9	Upper Marker

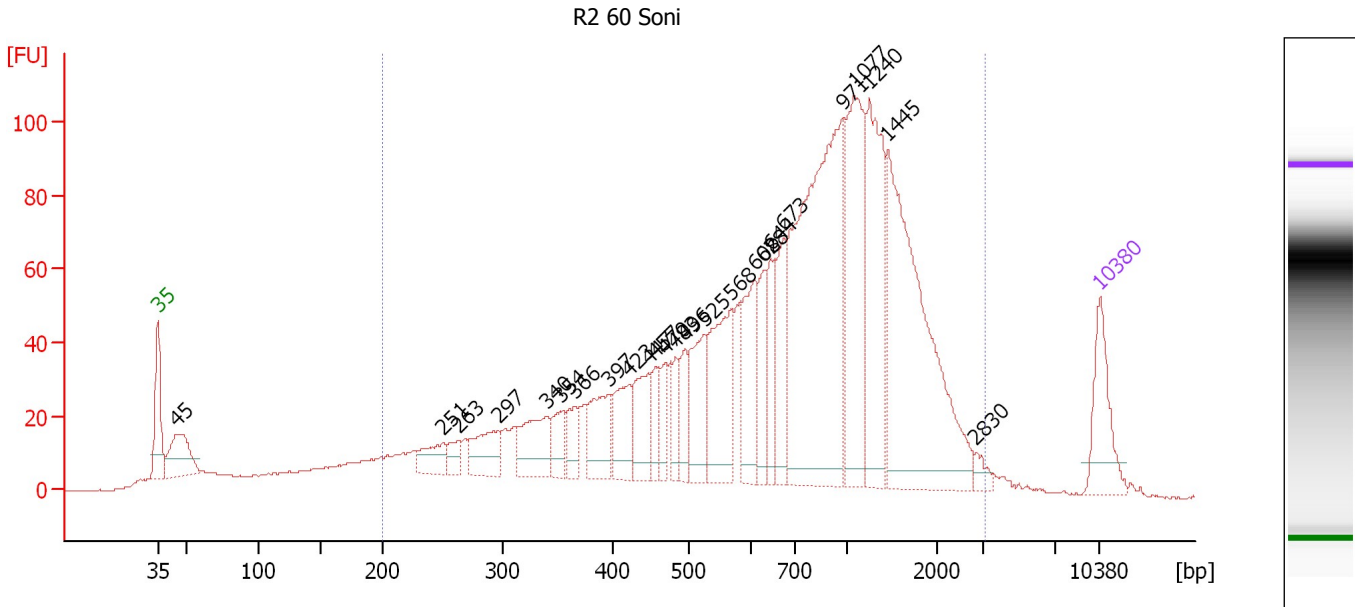
Region table for sample 9 : R2 30 Soni

From [bp]	To [bp]	Average Size [bp]	Molarity [pmol/l]	Conc. [pg/μl]	Corr. Area	% of Total	Size distribution in CV [%]	Color
200	3,269	879	6,291.3	2,346.99	1,589.6	91	58.0	Blue

Assay Class: High Sensitivity DNA Assay
 Data Path: C:\...ents and Settings\Bioanalyzer\2013-02-01\2013-02-01_002.xad

Created: 2/1/2013 11:54:59 AM
 Modified: 2/1/2013 12:42:32 PM

Electropherogram Summary Continued ...



Overall Results for sample 10 : R2 60 Soni

Number of peaks found: 25 Corr. Area 1: 2,190.4
 Noise: 0.1

Peak table for sample 10 : R2 60 Soni

Peak	Size [bp]	Conc. [pg/μl]	Molarity [pmol/l]	Observations
1	35	125.00	5,411.3	Lower Marker
2	45	114.75	3,870.1	
3	251	48.45	293.0	
4	263	26.57	152.9	
5	297	73.89	376.6	
6	340	95.08	423.2	
7	354	42.77	183.2	
8	366	40.65	168.1	
9	397	90.21	344.6	
10	423	81.88	293.6	
11	447	76.34	258.5	
12	457	39.61	131.4	
13	470	40.63	131.0	
14	483	45.37	142.3	
15	496	51.22	156.6	
16	525	99.50	287.0	
17	568	157.63	420.5	
18	608	118.64	295.7	
19	628	62.22	150.0	
20	644	65.89	154.9	
21	673	97.82	220.1	
22	971	543.93	849.0	
23	1,077	232.12	326.5	
24	1,240	214.05	261.6	
25	1,445	408.98	428.9	
26	2,830	13.03	7.0	


Assay Class: High Sensitivity DNA Assay
Data Path: C:\...ents and Settings\Bioanalyzer\2013-02-01\2013-02-01_002.xad

Created: 2/1/2013 11:54:59 AM
Modified: 2/1/2013 12:42:32 PM

Electropherogram Summary Continued ...**... Peak table for sample 10 : R2 60 Soni**

Peak	Size [bp]	Conc. [pg/μl]	Molarity [pmol/l]	Observations
27	10,380	75.00	10.9	Upper Marker

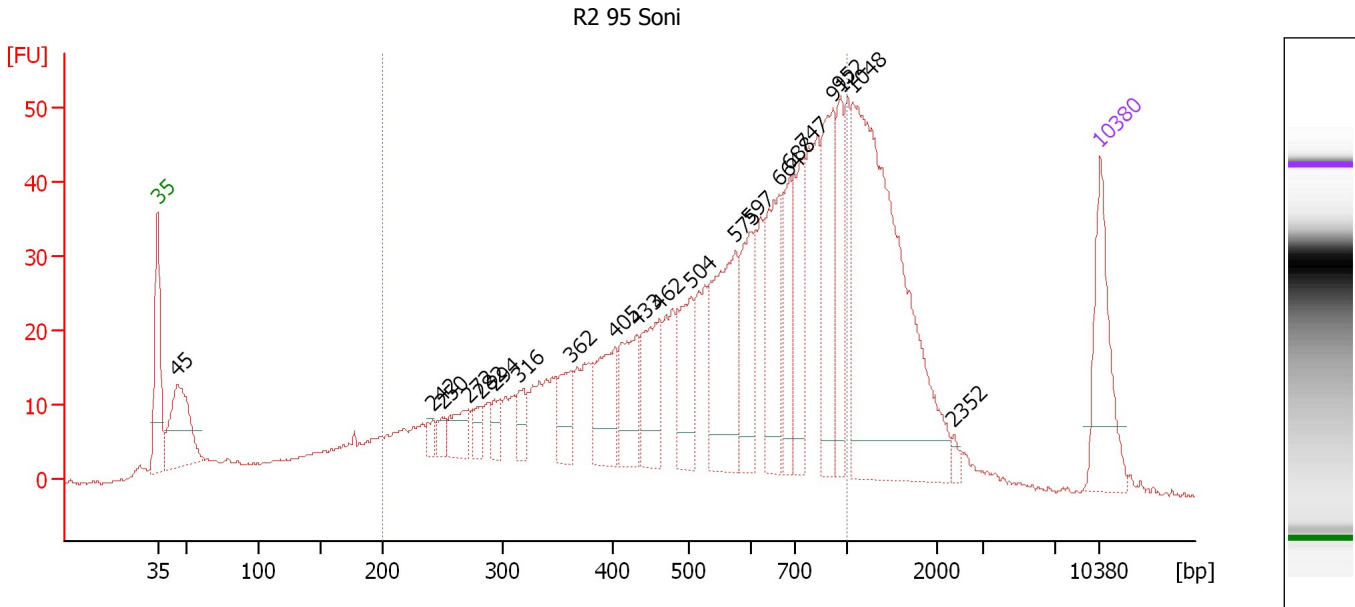
Region table for sample 10 : R2 60 Soni

From [bp]	To [bp]	Average Size [bp]	Molarity [pmol/l]	Conc. [pg/μl]	Corr. Area	% of Total	Size distribution in CV [%]	Color
200	3,120	895	9,321.9	3,424.30	2,190.4	89	59.6	

Assay Class: High Sensitivity DNA Assay
 Data Path: C:\...ents and Settings\Bioanalyzer\2013-02-01\2013-02-01_002.xad

Created: 2/1/2013 11:54:59 AM
 Modified: 2/1/2013 12:42:32 PM

Electropherogram Summary Continued ...



Overall Results for sample 11 : R2 95 Soni

Number of peaks found: 21 Corr. Area 1: 957.4
 Noise: 0.2

Peak table for sample 11 : R2 95 Soni

Peak	Size [bp]	Conc. [pg/μl]	Molarity [pmol/l]	Observations
1	35	125.00	5,411.3	Lower Marker
2	45	131.24	4,452.6	
3	242	12.87	80.5	
4	250	12.19	73.8	
5	272	35.21	196.4	
6	282	19.91	106.9	
7	294	19.62	101.1	
8	316	26.23	125.7	
9	362	39.06	163.4	
10	405	70.06	262.1	
11	433	65.59	229.3	
12	462	71.91	235.9	
13	504	73.81	221.7	
14	575	142.49	375.5	
15	597	80.75	204.8	
16	664	97.46	222.6	
17	688	68.87	151.6	
18	747	71.25	144.4	
19	912	105.77	175.8	
20	952	63.05	100.4	
21	1,048	398.14	575.5	
22	2,352	5.52	3.6	
23	10,380	75.00	10.9	Upper Marker

Assay Class: High Sensitivity DNA Assay
Data Path: C:\...ents and Settings\Bioanalyzer\2013-02-01\2013-02-01_002.xad

Created: 2/1/2013 11:54:59 AM
Modified: 2/1/2013 12:42:32 PM

Electropherogram Summary Continued ...

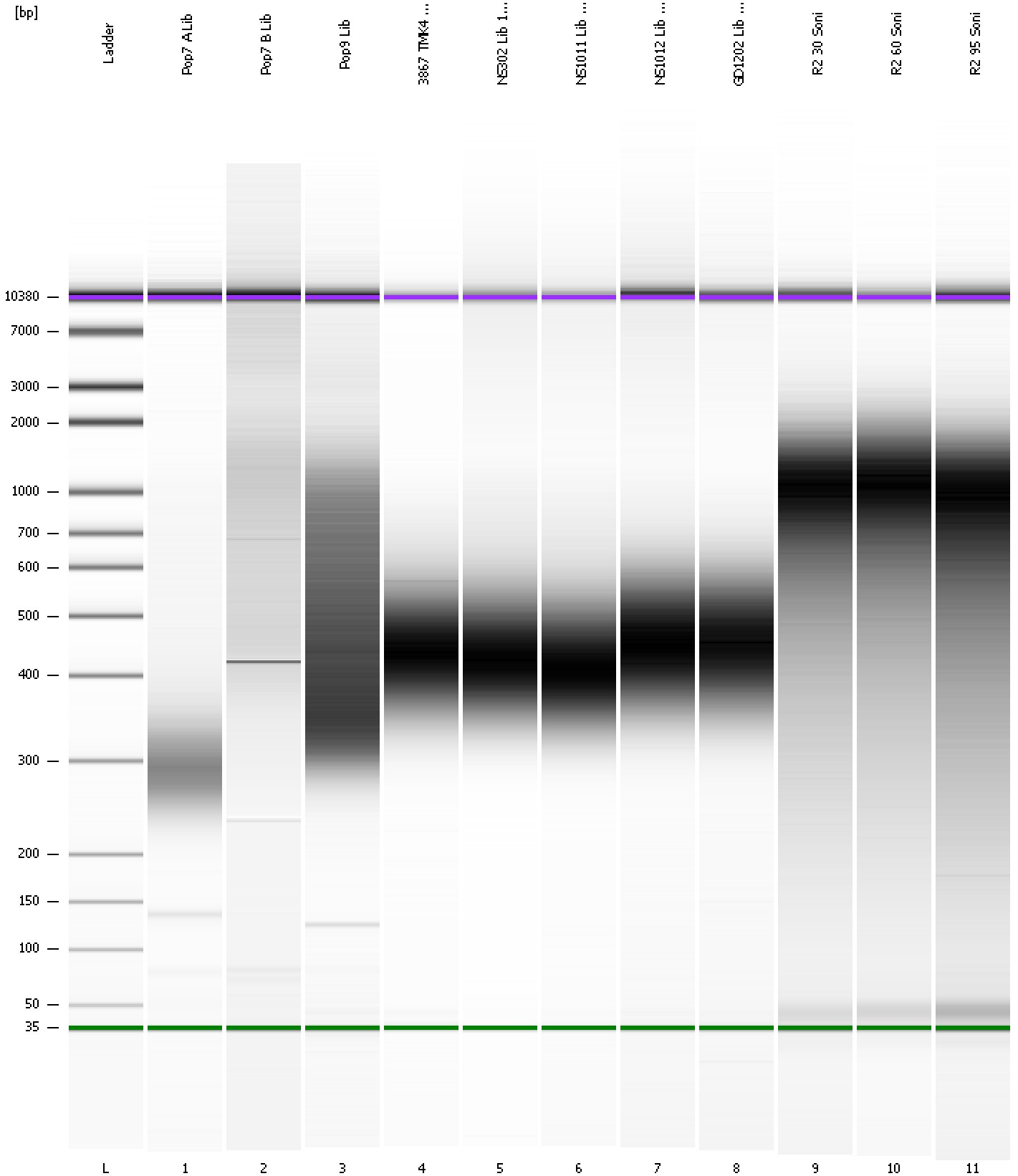
... Region table for sample 11 : R2 95 Soni

From [bp]	To [bp]	Average Size [bp]	Molarity [pmol/l]	Conc. [pg/μl]	Corr. Area	% of Total	Size distribution in CV [%]	Color
200	1,000	563	6,687.9	1,968.26	957.4	68	36.8	■

Assay Class: High Sensitivity DNA Assay
Data Path: C:\...ents and Settings\Bioanalyzer\2013-02-01\2013-02-01_002.xad

Created: 2/1/2013 11:54:59 AM
Modified: 2/1/2013 12:42:32 PM

Gel Image



Assay Class: High Sensitivity DNA Assay
 Data Path: C:\...ents and Settings\Bioanalyzer\2013-02-01\2013-02-01_002.xad

Created: 2/1/2013 11:54:59 AM
 Modified: 2/1/2013 12:42:32 PM

Run Logbook

Description	Number	Source	Category	Sub Category	Time	Time Zone	User	Host
Run ended on port 1 (Number of wells acquired: 12)		Instrument	Run		2/1/2013 12:36:17 PM	(GMT --08:00) Pacific Standard Time	UC Davis	D8XSMGH1
Run started on port 1 (File: C:\Documents and Settings\Bioanalyzer\2013-02-01\2013-02-01_002.xad)		Instrument	Run		2/1/2013 11:55:05 AM	(GMT --08:00) Pacific Standard Time	UC Davis	D8XSMGH1
Product Number : G2938B		Instrument	Run		2/1/2013 11:55:05 AM	(GMT --08:00) Pacific Standard Time	UC Davis	D8XSMGH1
Name :		Instrument	Run		2/1/2013 11:55:05 AM	(GMT --08:00) Pacific Standard Time	UC Davis	D8XSMGH1
Vendor : Agilent Technologies		Instrument	Run		2/1/2013 11:55:05 AM	(GMT --08:00) Pacific Standard Time	UC Davis	D8XSMGH1
Serial# : DE13701086		Instrument	Run		2/1/2013 11:55:05 AM	(GMT --08:00) Pacific Standard Time	UC Davis	D8XSMGH1
Firmware : C.01.069		Instrument	Run		2/1/2013 11:55:05 AM	(GMT --08:00) Pacific Standard Time	UC Davis	D8XSMGH1
Cartridge : Electrode		Instrument	Run		2/1/2013 11:55:05 AM	(GMT --08:00) Pacific Standard Time	UC Davis	D8XSMGH1