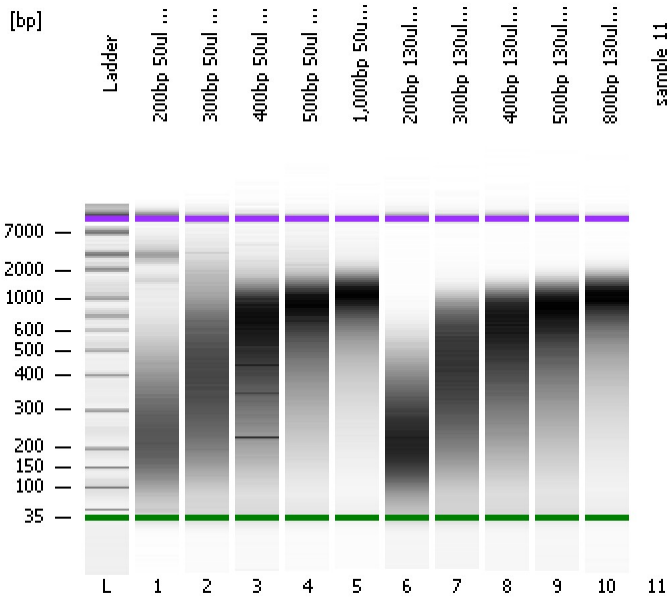


Assay Class: High Sensitivity DNA Assay
 Data Path: C:\...ents and Settings\Bioanalyzer\2013-02-08\2013-02-08_002.xad

Created: 2/8/2013 3:51:31 PM
 Modified: 4/5/2013 10:30:11 AM

Electrophoresis File Run Summary



Instrument Information:

Instrument Name: DE13701086 Firmware: C.01.069
 Serial#: DE13701086 Type: G2938B

Assay Information:

Assay Origin Path: C:\Program Files\Agilent\2100 bioanalyzer\2100 expert\assays\dsDNA\High Sensitivity DNA.xsy
 Assay Class: High Sensitivity DNA Assay
 Version: 1.03
 Assay Comments: Copyright © 2003-2010 Agilent Technologies

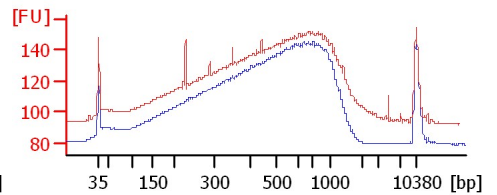
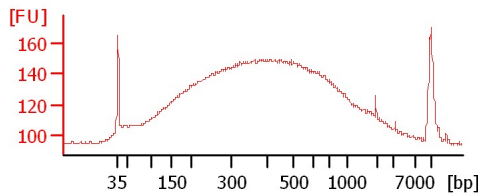
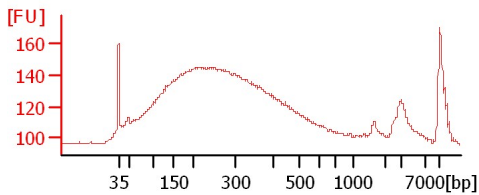
Chip Information:

Chip Lot #:
 Reagent Kit Lot #:
 Chip Comments:

200bp 50ul 13ug/ul Soni

300bp 50ul 13ug/ul Soni

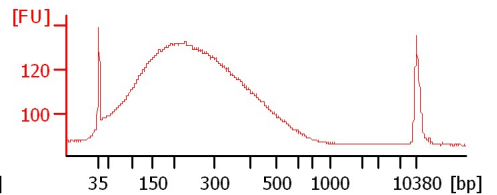
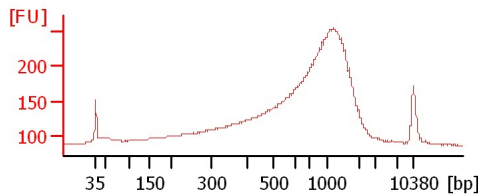
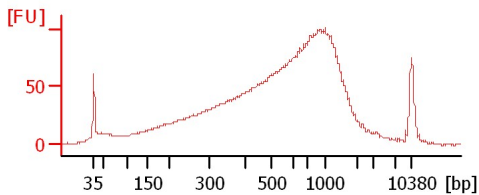
400bp 50ul 13ug/ul Soni



500bp 50ul 13ug/ul Soni

1,000bp 50ul 13ug/ul Soni

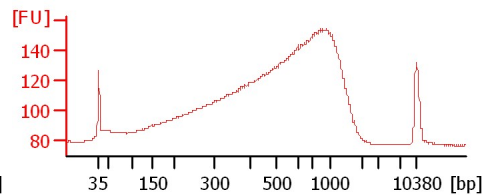
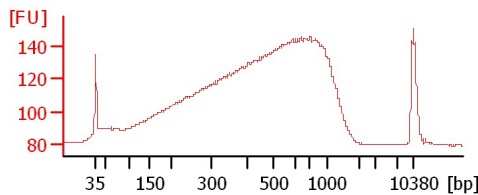
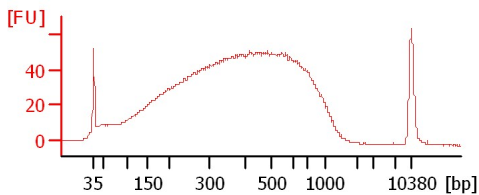
200bp 130ul 13ug/ul Soni



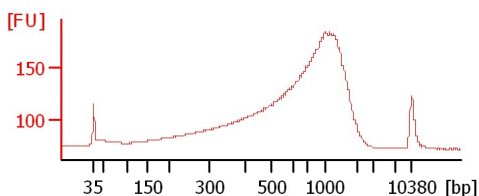
300bp 130ul 13ug/ul Soni

400bp 130ul 13ug/ul Soni

500bp 130ul 13ug/ul Soni



800bp 130ul 13ug/ul Soni



Assay Class: High Sensitivity DNA Assay
Data Path: C:\...ents and Settings\Bioanalyzer\2013-02-08\2013-02-08_002.xad

Created: 2/8/2013 3:51:31 PM
Modified: 4/5/2013 10:30:11 AM

Electrophoresis File Run Summary (Chip Summary)

Sample Name	Sample Comment	Rest. Digest	Status	Observation	Result Label	Result Color
200bp 50ul 13ug/ul Soni		<input type="checkbox"/>	✓			
300bp 50ul 13ug/ul Soni		<input type="checkbox"/>	✓			
400bp 50ul 13ug/ul Soni		<input type="checkbox"/>	✓			
500bp 50ul 13ug/ul Soni		<input type="checkbox"/>	✓			
1,000bp 50ul 13ug/ul Soni		<input type="checkbox"/>	✓			
200bp 130ul 13ug/ul Soni		<input type="checkbox"/>	✓			
300bp 130ul 13ug/ul Soni		<input type="checkbox"/>	✓			
400bp 130ul 13ug/ul Soni		<input type="checkbox"/>	✓			
500bp 130ul 13ug/ul Soni		<input type="checkbox"/>	✓			
800bp 130ul 13ug/ul Soni		<input type="checkbox"/>	✓			
sample 11		<input type="checkbox"/>				
Ladder		<input type="checkbox"/>	✓			

Chip Lot #

Reagent Kit Lot #

Chip Comments :

Assay Class: High Sensitivity DNA Assay
Data Path: C:\...ents and Settings\Bioanalyzer\2013-02-08\2013-02-08_002.xad

Created: 2/8/2013 3:51:31 PM
Modified: 4/5/2013 10:30:11 AM

Electrophoresis Assay Details

General Analysis Settings

Number of Available Sample and Ladder Wells (Max.) : 12
Minimum Visible Range [s] : 32
Maximum Visible Range [s] : 138
Start Analysis Time Range [s] : 33
End Analysis Time Range [s] : 137.5
Ladder Concentration [pg/μl] : 1950
Uses Standard Area for Ladder Fragments
Lower Marker Concentration [pg/μl] : 125
Upper Marker Concentration [pg/μl] : 75
Used Upper Marker for Quantitation
Standard Curve Fit is Point to Point
Show Data Aligned to Lower and Upper Marker

Integrator Settings

Integration Start Time [s] : 33.05
Integration End Time [s] : 137
Slope Threshold : 0.8
Height Threshold [FU] : 5
Area Threshold : 0.1
Width Threshold [s] : 0.6
Baseline Plateau [s] : 0.5

Filter Settings

Filter Width [s] : 0.5
Polynomial Order : 4

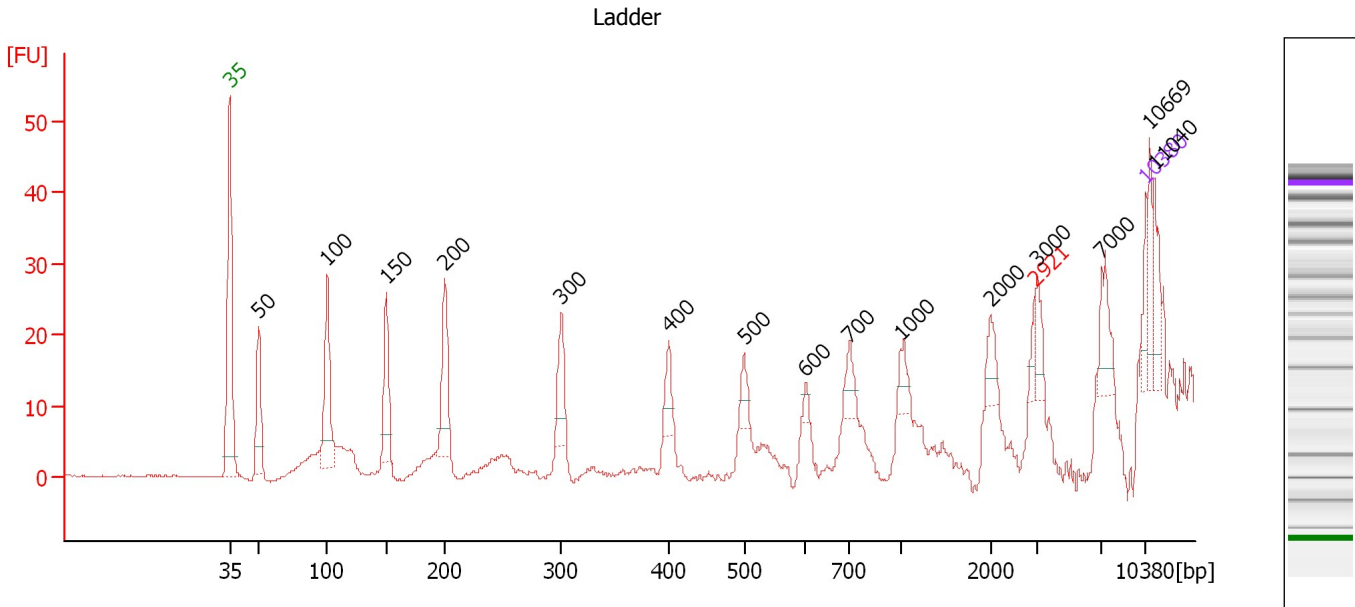
Ladder

Ladder Peak	Size	Area
1	35	160
2	50	210
3	100	208
4	150	221
5	200	242
6	300	270
7	400	305
8	500	306
9	600	336
10	700	321
11	1000	366
12	2000	413
13	3000	411
14	7000	400
15	10380	214

Assay Class: High Sensitivity DNA Assay
 Data Path: C:\...ents and Settings\Bioanalyzer\2013-02-08\2013-02-08_002.xad

Created: 2/8/2013 3:51:31 PM
 Modified: 4/5/2013 10:30:11 AM

Electropherogram Summary



Overall Results for Ladder

Noise: 0.1

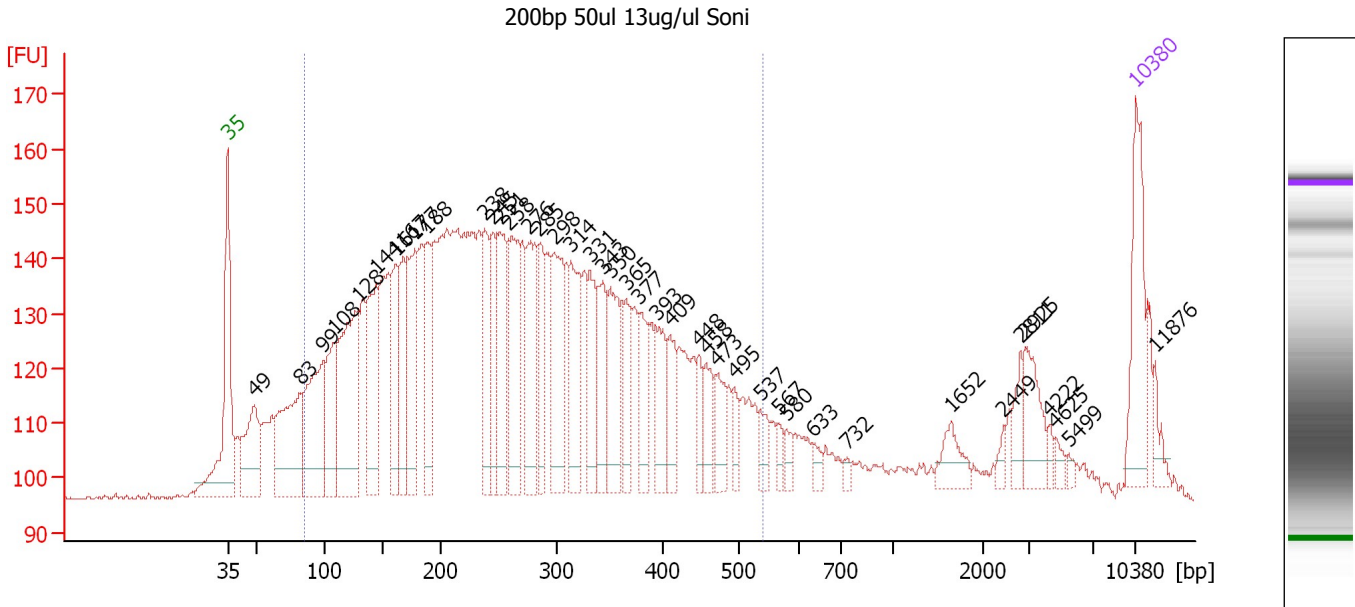
Peak table for Ladder

Peak	Size [bp]	Conc. [pg/μl]	Molarity [pmol/l]	Observations
1	35	125.00	5,411.3	Lower Marker
2	50	150.00	4,545.5	Ladder Peak
3	100	150.00	2,272.7	Ladder Peak
4	150	150.00	1,515.2	Ladder Peak
5	200	150.00	1,136.4	Ladder Peak
6	300	150.00	757.6	Ladder Peak
7	400	150.00	568.2	Ladder Peak
8	500	150.00	454.5	Ladder Peak
9	600	150.00	378.8	Ladder Peak
10	700	150.00	324.7	Ladder Peak
11	1,000	150.00	227.3	Ladder Peak
12	2,000	150.00	113.6	Ladder Peak
13	2,921	0.00	0.0	excluded peak
14	3,000	150.00	75.8	Ladder Peak
15	7,000	150.00	32.5	Ladder Peak
16	10,380	75.00	10.9	Upper Marker
17	10,669	0.00	0.0	
18	11,040	0.00	0.0	

Assay Class: High Sensitivity DNA Assay
 Data Path: C:\...ents and Settings\Bioanalyzer\2013-02-08\2013-02-08_002.xad

Created: 2/8/2013 3:51:31 PM
 Modified: 4/5/2013 10:30:11 AM

Electropherogram Summary Continued ...



Overall Results for sample 1 : 200bp 50ul 13ug/ul Soni

Number of peaks found: 42 Corr. Area 1: 2,122.6
 Noise: 0.5

Peak table for sample 1 : 200bp 50ul 13ug/ul Soni


Peak	Size [bp]	Conc. [pg/μl]	Molarity [pmol/l]	Observations
1	35	125.00	5,411.3	Lower Marker
2	49	114.70	3,546.4	
3	83	177.80	3,261.1	
4	99	177.62	2,707.2	
5	108	104.76	1,464.3	
6	128	237.16	2,799.0	
7	144	156.97	1,648.5	
8	161	103.54	973.3	
9	167	97.79	886.5	
10	177	131.08	1,120.7	
11	188	97.26	783.0	
12	238	93.98	599.3	
13	245	79.51	491.7	
14	251	114.18	689.2	
15	258	133.03	780.0	
16	276	119.41	656.7	
17	285	68.20	362.3	
18	298	126.68	644.7	
19	314	106.60	515.2	
20	331	68.86	314.8	
21	343	72.45	320.1	
22	350	85.83	371.1	
23	365	56.31	233.8	
24	377	53.51	214.8	
25	393	55.14	212.4	
26	409	45.95	170.2	

Assay Class: High Sensitivity DNA Assay
 Data Path: C:\...ents and Settings\Bioanalyzer\2013-02-08\2013-02-08_002.xad


Created: 2/8/2013 3:51:31 PM
 Modified: 4/5/2013 10:30:11 AM

Electropherogram Summary Continued ...

... Peak table for sample 1 : 200bp 50ul 13ug/ul Soni

Peak	Size [bp]	Conc. [pg/µl]	Molarity [pmol/l]	Observations
27	448	26.35	89.2	
28	458	35.85	118.7	
29	473	37.50	120.2	
30	495	20.72	63.4	
31	537	22.54	63.6	
32	567	12.19	32.6	
33	580	12.33	32.2	
34	633	11.08	26.5	
35	732	5.74	11.9	
36	1,652	26.41	24.2	
37	2,449	7.62	4.7	
38	2,811	19.25	10.4	
39	2,925	42.45	22.0	
40	4,222	6.44	2.3	
41	4,625	7.27	2.4	
42	5,499	4.48	1.2	
43	 10,380	75.00	10.9	Upper Marker
44	11,876	0.00	0.0	

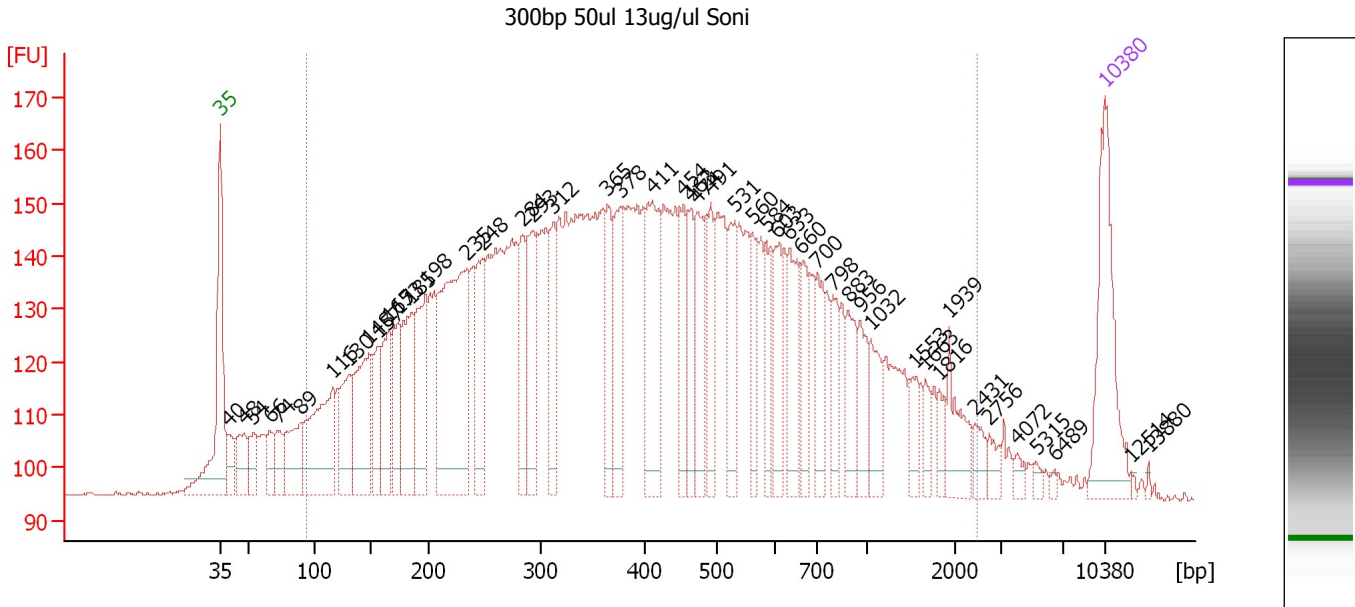
Region table for sample 1 : 200bp 50ul 13ug/ul Soni

From [bp]	To [bp]	Average Size [bp]	Molarity [pmol/l]	Conc. [pg/µl]	Corr. Area	% of Total	Size distribution in CV [%]	Color
85	542	271	29,770.4	4,000.44	2,122.6	82	40.0	

Assay Class: High Sensitivity DNA Assay
 Data Path: C:\...ents and Settings\Bioanalyzer\2013-02-08\2013-02-08_002.xad

Created: 2/8/2013 3:51:31 PM
 Modified: 4/5/2013 10:30:11 AM

Electropherogram Summary Continued ...



Overall Results for sample 2 : 300bp 50ul 13ug/ul Soni

Number of peaks found: 48 Corr. Area 1: 3,014.6
 Noise: 0.3

Peak table for sample 2 : 300bp 50ul 13ug/ul Soni


Peak	Size [bp]	Conc. [pg/μl]	Molarity [pmol/l]	Observations
1	35	125.00	5,411.3	Lower Marker
2	40	26.96	1,031.5	
3	48	41.28	1,304.7	
4	54	28.10	789.1	
5	66	26.94	614.8	
6	74	28.38	584.0	
7	89	63.50	1,077.6	
8	116	134.06	1,751.2	
9	130	64.70	751.4	
10	148	109.95	1,127.8	
11	157	52.69	509.7	
12	165	65.77	603.6	
13	173	61.28	536.4	
14	185	87.17	712.6	
15	198	89.69	686.1	
16	235	225.43	1,455.8	
17	248	68.20	416.8	
18	284	56.42	300.5	
19	293	80.32	415.3	
20	312	51.25	248.5	
21	365	55.00	228.4	
22	378	67.84	272.2	
23	411	95.29	351.1	
24	454	52.09	173.9	
25	463	48.13	157.4	
26	474	56.47	180.6	

Assay Class: High Sensitivity DNA Assay
 Data Path: C:\...ents and Settings\Bioanalyzer\2013-02-08\2013-02-08_002.xad

Created: 2/8/2013 3:51:31 PM
 Modified: 4/5/2013 10:30:11 AM

Electropherogram Summary Continued ...

... Peak table for sample 2 : 300bp 50ul 13ug/ul Soni

Peak	Size [bp]	Conc. [pg/µl]	Molarity [pmol/l]	Observations
27	491	40.59	125.2	
28	531	53.83	153.6	
29	560	36.39	98.4	
30	584	33.67	87.4	
31	603	39.95	100.4	
32	633	51.63	123.5	
33	660	37.03	85.0	
34	700	34.55	74.8	
35	798	28.06	53.3	
36	883	33.49	57.4	
37	956	28.42	45.0	
38	1,032	28.92	42.5	
39	1,553	16.83	16.4	
40	1,663	11.63	10.6	
41	1,816	11.79	9.8	
42	1,939	30.03	23.5	
43	2,431	11.48	7.2	
44	2,756	9.11	5.0	
45	4,072	6.07	2.3	
46	5,315	3.58	1.0	
47	6,489	2.20	0.5	
48	 10,380	75.00	10.9	Upper Marker
49	12,514	0.00	0.0	
50	13,880	0.00	0.0	

Region table for sample 2 : 300bp 50ul 13ug/ul Soni

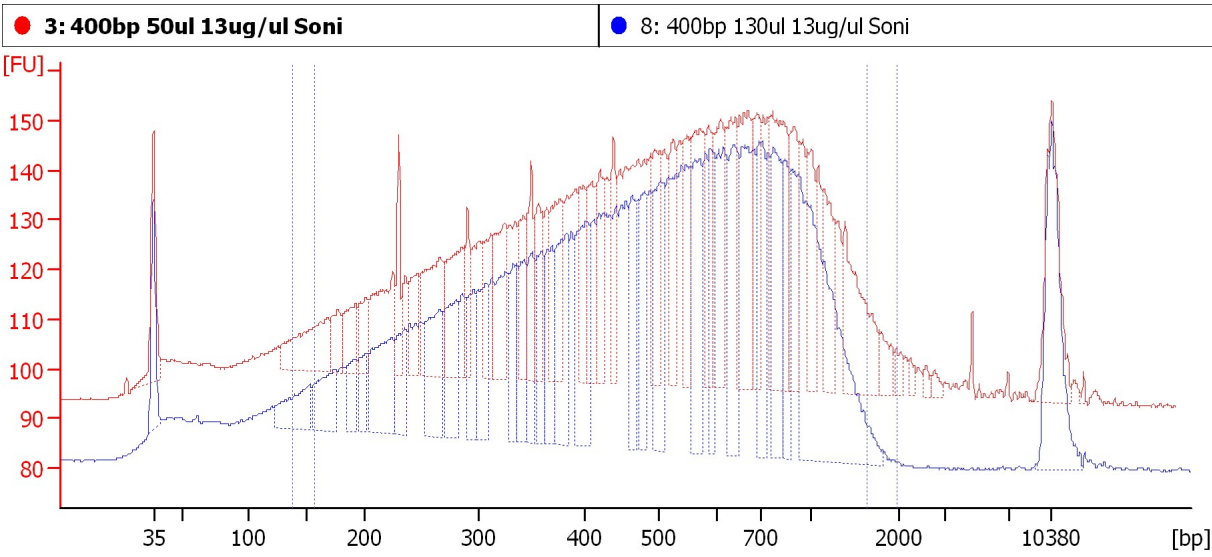
From [bp]	To [bp]	Average Size [bp]	Molarity [pmol/l]	Conc. [pg/µl]	Corr. Area	% of Total	Size distribution in CV [%]	Color
94	2,470	508	18,814.6	3,540.77	3,014.6	92	77.8	

Assay Class: High Sensitivity DNA Assay
 Data Path: C:\...ents and Settings\Bioanalyzer\2013-02-08\2013-02-08_002.xad

Created: 2/8/2013 3:51:31 PM
 Modified: 4/5/2013 10:30:11 AM

Electropherogram Summary Continued ...

400bp 50ul 13ug/ul Soni



Overall Results for sample 3 : 400bp 50ul 13ug/ul Soni

Number of peaks found: 37 Corr. Area 1: 2,346.3
 Noise: 0.2

Peak table for sample 3 : 400bp 50ul 13ug/ul Soni

Peak	Size [bp]	Conc. [pg/μl]	Molarity [pmol/l]	Observations
1	35	125.00	5,411.3	Lower Marker
2	168	115.19	1,041.3	
3	177	39.00	334.2	
4	192	54.90	432.6	
5	201	40.78	306.7	
6	230	49.37	325.6	
7	246	46.70	287.8	
8	265	115.67	660.5	
9	285	101.86	540.9	
10	290	43.51	227.1	
11	312	56.05	272.6	
12	324	77.08	360.3	
13	342	53.24	235.8	
14	349	51.83	224.8	
15	356	47.79	203.2	
16	376	87.92	354.0	
17	399	52.67	199.8	
18	408	56.62	210.2	
19	421	54.61	196.5	
20	440	53.33	183.7	
21	496	62.29	190.4	
22	525	57.49	166.1	
23	548	61.41	169.8	
24	585	60.24	156.0	
25	608	71.10	177.2	
26	672	101.67	229.1	

Assay Class: High Sensitivity DNA Assay
 Data Path: C:\...ents and Settings\Bioanalyzer\2013-02-08\2013-02-08_002.xad

Created: 2/8/2013 3:51:31 PM
 Modified: 4/5/2013 10:30:11 AM

Electropherogram Summary Continued ...

... Peak table for sample 3 : 400bp 50ul 13ug/ul Soni

Peak	Size [bp]	Conc. [pg/μl]	Molarity [pmol/l]	Observations
27	693	58.98	128.9	
28	768	129.98	256.5	
29	898	59.48	100.3	
30	999	45.25	68.6	
31	1,136	53.34	71.1	
32	1,382	78.36	85.9	
33	1,784	13.73	11.7	
34	1,961	6.43	5.0	
35	2,224	4.30	2.9	
36	2,570	3.56	2.1	
37	2,749	4.19	2.3	
38	10,380	75.00	10.9	Upper Marker
39	12,878	0.00	0.0	

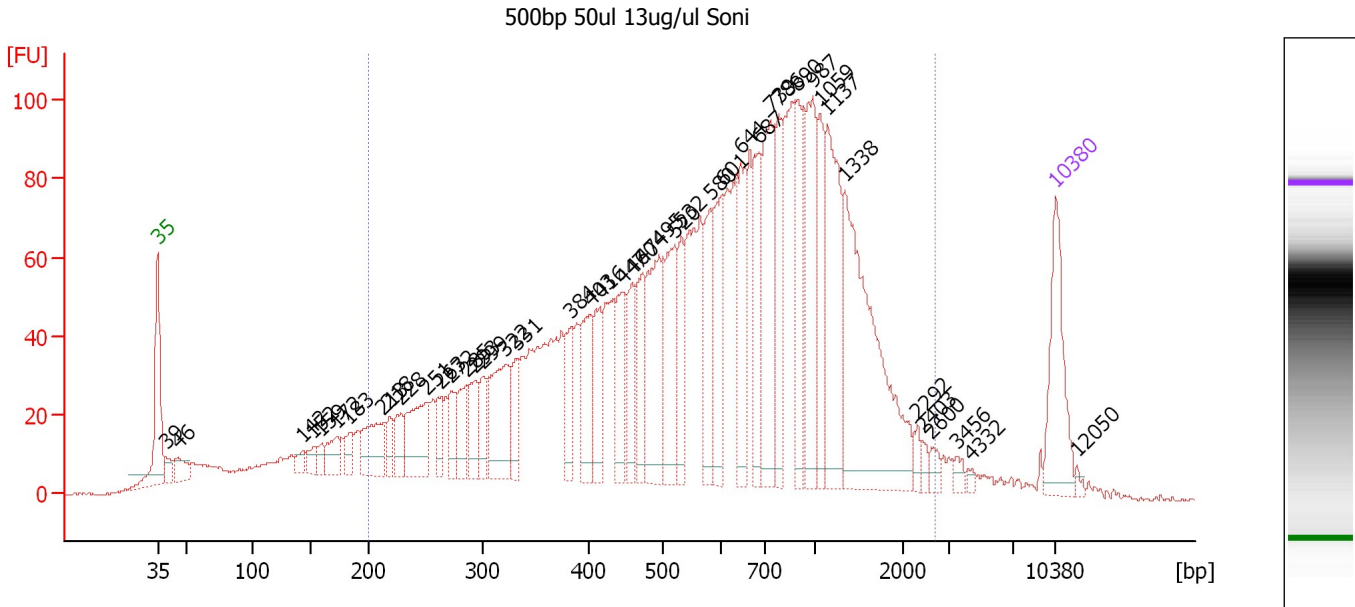
Region table for sample 3 : 400bp 50ul 13ug/ul Soni

From [bp]	To [bp]	Average Size [bp]	Molarity [pmol/l]	Conc. [pg/μl]	Corr. Area	% of Total	Size distribution in CV [%]	Color
136	1,979	572	15,188.3	3,651.96	2,346.3	90	60.1	

Assay Class: High Sensitivity DNA Assay
 Data Path: C:\...ents and Settings\Bioanalyzer\2013-02-08\2013-02-08_002.xad

Created: 2/8/2013 3:51:31 PM
 Modified: 4/5/2013 10:30:11 AM

Electropherogram Summary Continued ...



Overall Results for sample 4 : 500bp 50ul 13ug/ul Soni

Number of peaks found: 44 Corr. Area 1: 2,771.0
 Noise: 0.2

Peak table for sample 4 : 500bp 50ul 13ug/ul Soni


Peak	Size [bp]	Conc. [pg/μl]	Molarity [pmol/l]	Observations
1	35	125.00	5,411.3	Lower Marker
2	39	17.21	664.2	
3	46	27.73	914.4	
4	142	14.09	150.0	
5	152	16.76	167.3	
6	159	13.88	132.5	
7	172	33.46	294.5	
8	183	19.48	161.2	
9	213	66.74	475.7	
10	218	22.71	158.1	
11	228	30.90	205.2	
12	251	79.62	480.1	
13	263	28.43	163.9	
14	272	34.05	189.4	
15	285	41.73	221.5	
16	293	46.24	238.8	
17	299	32.67	165.3	
18	322	103.63	488.1	
19	331	35.67	163.1	
20	384	43.27	170.7	
21	403	67.25	253.0	
22	416	53.34	194.3	
23	447	64.26	217.8	
24	460	51.67	170.1	
25	474	61.04	195.1	
26	495	123.56	378.1	

Assay Class: High Sensitivity DNA Assay
 Data Path: C:\...ents and Settings\Bioanalyzer\2013-02-08\2013-02-08_002.xad

Created: 2/8/2013 3:51:31 PM
 Modified: 4/5/2013 10:30:11 AM

Electropherogram Summary Continued ...

... Peak table for sample 4 : 500bp 50ul 13ug/ul Soni

Peak	Size [bp]	Conc. [pg/μl]	Molarity [pmol/l]	Observations
27	520	102.66	299.2	
28	532	54.68	155.6	
29	580	74.16	193.6	
30	601	80.16	202.2	
31	644	84.25	198.2	
32	687	73.34	161.7	
33	739	125.62	257.6	
34	786	71.39	137.7	
35	890	70.61	120.2	
36	987	107.00	164.3	
37	1,059	62.79	89.8	
38	1,137	133.29	177.7	
39	1,338	242.47	274.7	
40	2,292	8.85	5.9	
41	2,403	6.50	4.1	
42	2,600	8.80	5.1	
43	3,456	6.93	3.0	
44	4,332	3.89	1.4	
45	 10,380	75.00	10.9	Upper Marker
46	12,050	0.00	0.0	

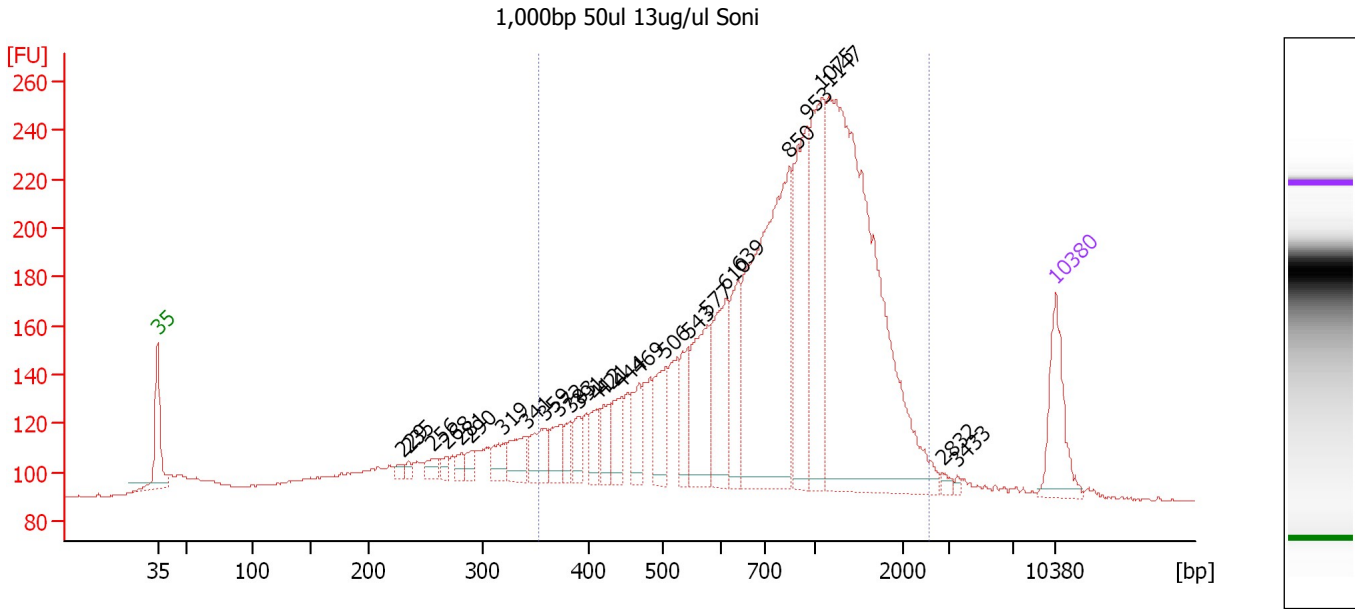
Region table for sample 4 : 500bp 50ul 13ug/ul Soni

From [bp]	To [bp]	Average Size [bp]	Molarity [pmol/l]	Conc. [pg/μl]	Corr. Area	% of Total	Size distribution in CV [%]	Color
200	2,665	729	10,829.9	3,428.78	2,771.0	88	60.0	

Assay Class: High Sensitivity DNA Assay
 Data Path: C:\...ents and Settings\Bioanalyzer\2013-02-08\2013-02-08_002.xad

Created: 2/8/2013 3:51:31 PM
 Modified: 4/5/2013 10:30:11 AM

Electropherogram Summary Continued ...



Overall Results for sample 5 : 1,000bp 50ul 13ug/ul Soni

Number of peaks found: 27 Corr. Area 1: 2,716.5
 Noise: 0.2

Peak table for sample 5 : 1,000bp 50ul 13ug/ul Soni

Peak	Size [bp]	Conc. [pg/μl]	Molarity [pmol/l]	Observations
1	35	125.00	5,411.3	Lower Marker
2	229	9.33	61.7	
3	235	8.59	55.3	
4	256	18.37	108.6	
5	268	13.19	74.6	
6	281	15.18	81.8	
7	290	15.57	81.5	
8	319	32.52	154.3	
9	341	48.67	216.3	
10	359	50.25	212.0	
11	372	38.13	155.1	
12	383	24.20	95.7	
13	391	27.77	107.5	
14	412	35.99	132.3	
15	421	36.31	130.7	
16	444	47.67	162.7	
17	469	47.92	154.7	
18	506	71.97	215.5	
19	543	57.54	160.4	
20	577	124.63	327.4	
21	610	125.05	310.6	
22	639	88.06	208.8	
23	850	456.51	813.5	
24	953	191.03	303.7	
25	1,075	195.93	276.3	
26	1,147	716.35	946.0	

Assay Class: High Sensitivity DNA Assay
 Data Path: C:\...ents and Settings\Bioanalyzer\2013-02-08\2013-02-08_002.xad

Created: 2/8/2013 3:51:31 PM
 Modified: 4/5/2013 10:30:11 AM

Electropherogram Summary Continued ...

... Peak table for sample 5 : 1,000bp 50ul 13ug/ul Soni

Peak	Size [bp]	Conc. [pg/μl]	Molarity [pmol/l]	Observations
27	2,832	5.23	2.8	
28	3,433	3.07	1.4	
29	10,380	75.00	10.9	Upper Marker

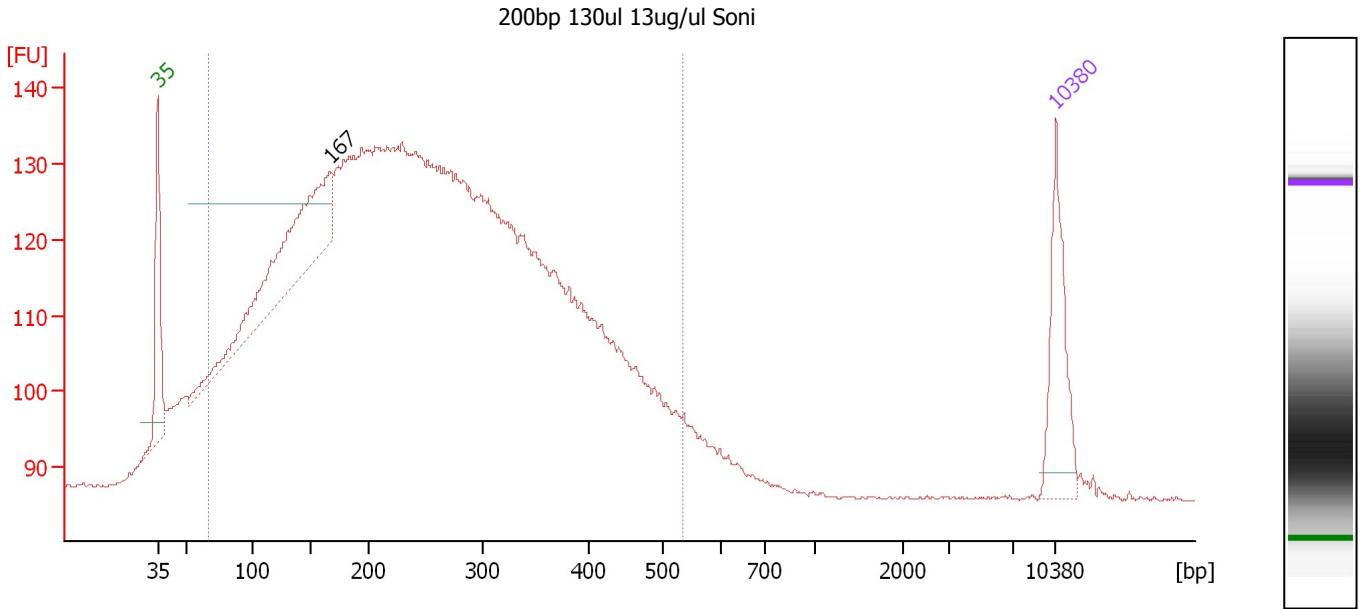
Region table for sample 5 : 1,000bp 50ul 13ug/ul Soni

From [bp]	To [bp]	Average Size [bp]	Molarity [pmol/l]	Conc. [pg/μl]	Corr. Area	% of Total	Size distribution in CV [%]	Color
353	2,545	951	5,638.9	2,656.28	2,716.5	81	48.1	

Assay Class: High Sensitivity DNA Assay
 Data Path: C:\...ents and Settings\Bioanalyzer\2013-02-08\2013-02-08_002.xad

Created: 2/8/2013 3:51:31 PM
 Modified: 4/5/2013 10:30:11 AM

Electropherogram Summary Continued ...



Overall Results for sample 6 : 200bp 130ul 13ug/ul Soni

Number of peaks found: 1 Corr. Area 1: 1,917.4
 Noise: 0.2

Peak table for sample 6 : 200bp 130ul 13ug/ul Soni

Peak	Size [bp]	Conc. [pg/μl]	Molarity [pmol/l]	Observations
1	35	125.00	5,411.3	Lower Marker
2	167	263.96	2,389.0	
3	10,380	75.00	10.9	Upper Marker

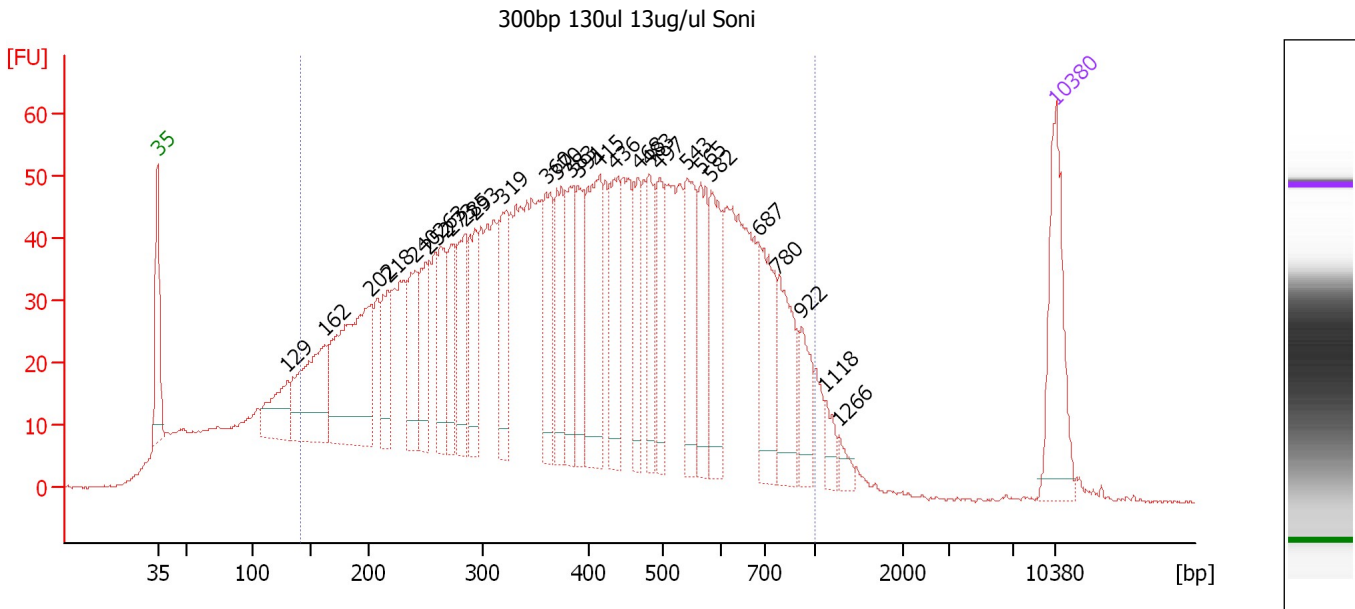
Region table for sample 6 : 200bp 130ul 13ug/ul Soni

From [bp]	To [bp]	Average Size [bp]	Molarity [pmol/l]	Conc. [pg/μl]	Corr. Area	% of Total	Size distribution in CV [%]	Color
67	535	255	36,611.7	4,472.50	1,917.4	93	42.0	Blue

Assay Class: High Sensitivity DNA Assay
 Data Path: C:\...ents and Settings\Bioanalyzer\2013-02-08\2013-02-08_002.xad

Created: 2/8/2013 3:51:31 PM
 Modified: 4/5/2013 10:30:11 AM

Electropherogram Summary Continued ...



Overall Results for sample 7 : 300bp 130ul 13ug/ul Soni

Number of peaks found: 28 Corr. Area 1: 2,240.1
 Noise: 0.1

Peak table for sample 7 : 300bp 130ul 13ug/ul Soni


Peak	Size [bp]	Conc. [pg/μl]	Molarity [pmol/l]	Observations
1	35	125.00	5,411.3	Lower Marker
2	129	61.00	714.1	
3	162	130.93	1,226.7	
4	202	209.64	1,568.9	
5	218	60.87	424.0	
6	240	69.59	438.5	
7	252	63.32	380.1	
8	263	63.88	367.6	
9	273	51.72	287.4	
10	285	72.17	384.2	
11	293	60.61	312.9	
12	319	79.21	375.8	
13	360	78.45	330.4	
14	370	69.60	284.7	
15	383	65.01	257.3	
16	391	67.95	263.5	
17	415	122.31	446.8	
18	436	75.21	261.5	
19	468	50.28	162.8	
20	483	57.94	181.7	
21	497	53.32	162.6	
22	543	78.61	219.4	
23	565	64.40	172.8	
24	582	70.39	183.4	
25	687	78.78	173.6	
26	780	69.79	135.6	

Assay Class: High Sensitivity DNA Assay
 Data Path: C:\...ents and Settings\Bioanalyzer\2013-02-08\2013-02-08_002.xad


Created: 2/8/2013 3:51:31 PM
 Modified: 4/5/2013 10:30:11 AM

Electropherogram Summary Continued ...

... Peak table for sample 7 : 300bp 130ul 13ug/ul Soni

Peak	Size [bp]	Conc. [pg/μl]	Molarity [pmol/l]	Observations
27	922	36.62	60.2	
28	1,118	13.91	18.8	
29	1,266	9.57	11.4	
30	 10,380	75.00	10.9	Upper Marker

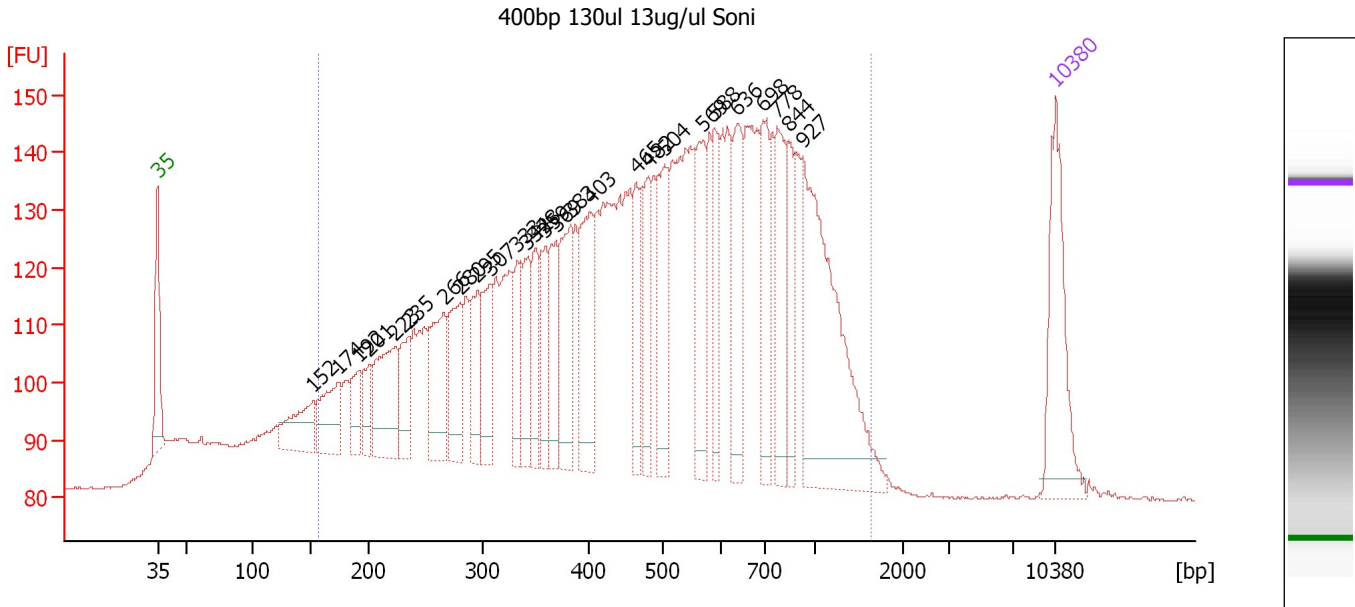
Region table for sample 7 : 300bp 130ul 13ug/ul Soni

From [bp]	To [bp]	Average Size [bp]	Molarity [pmol/l]	Conc. [pg/μl]	Corr. Area	% of Total	Size distribution in CV [%]	Color
141	1,000	425	16,318.9	3,419.27	2,240.1	87	42.6	

Assay Class: High Sensitivity DNA Assay
 Data Path: C:\...ents and Settings\Bioanalyzer\2013-02-08\2013-02-08_002.xad

Created: 2/8/2013 3:51:31 PM
 Modified: 4/5/2013 10:30:11 AM

Electropherogram Summary Continued ...



Overall Results for sample 8 : 400bp 130ul 13ug/ul Soni

Number of peaks found: 27 Corr. Area 1: 2,377.0
 Noise: 0.2

Peak table for sample 8 : 400bp 130ul 13ug/ul Soni

Peak	Size [bp]	Conc. [pg/μl]	Molarity [pmol/l]	Observations
1	35	125.00	5,411.3	Lower Marker
2	152	55.78	557.5	
3	174	58.79	512.6	
4	192	34.35	271.3	
5	201	28.82	217.6	
6	223	90.83	617.1	
7	235	46.49	299.7	
8	266	82.53	470.6	
9	280	68.58	370.7	
10	295	51.85	265.9	
11	307	52.94	261.4	
12	333	44.14	201.0	
13	342	50.58	223.9	
14	348	45.21	196.6	
15	359	45.09	190.2	
16	369	51.66	212.0	
17	383	78.92	312.4	
18	403	84.49	317.9	
19	465	51.36	167.5	
20	482	51.66	162.5	
21	504	71.79	215.8	
22	569	67.55	179.9	
23	588	49.13	126.6	
24	636	75.38	179.6	
25	698	69.20	150.3	
26	778	68.41	133.3	

Assay Class: High Sensitivity DNA Assay
 Data Path: C:\...ents and Settings\Bioanalyzer\2013-02-08\2013-02-08_002.xad

Created: 2/8/2013 3:51:31 PM
 Modified: 4/5/2013 10:30:11 AM

Electropherogram Summary Continued ...

... Peak table for sample 8 : 400bp 130ul 13ug/ul Soni

Peak	Size [bp]	Conc. [pg/μl]	Molarity [pmol/l]	Observations
27	844	43.63	78.3	
28	927	212.10	346.5	
29	▶ 10,380	75.00	10.9	Upper Marker

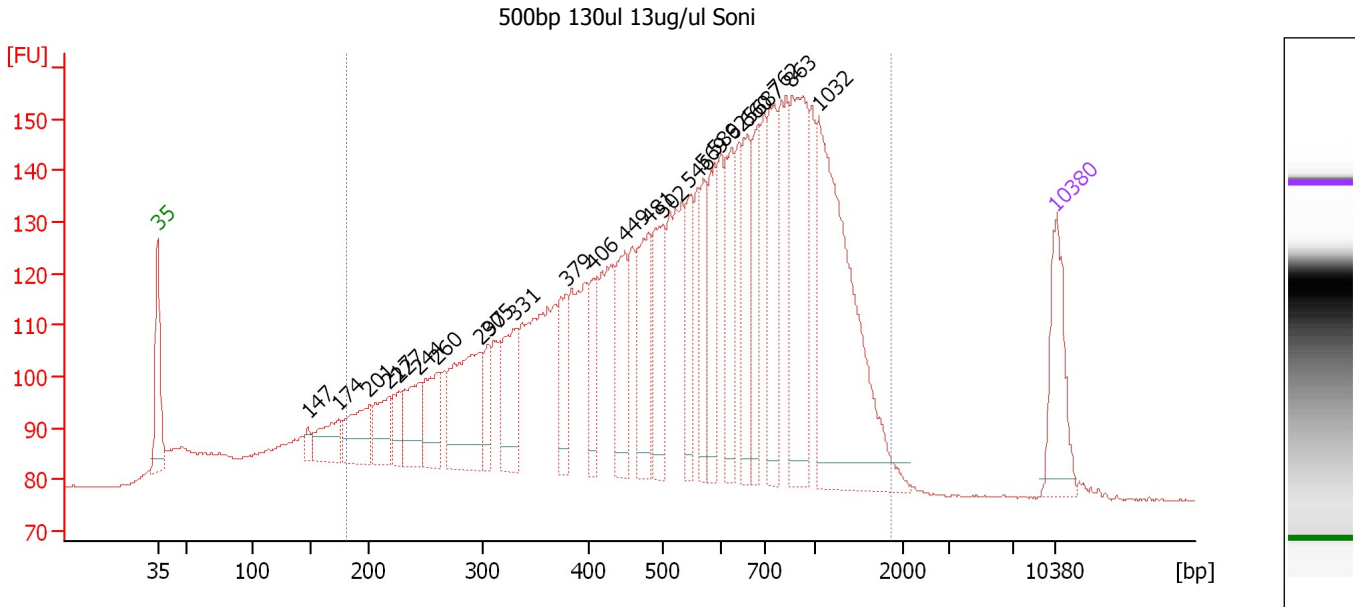
Region table for sample 8 : 400bp 130ul 13ug/ul Soni

From [bp]	To [bp]	Average Size [bp]	Molarity [pmol/l]	Conc. [pg/μl]	Corr. Area	% of Total	Size distribution in CV [%]	Color
156	1,633	538	12,207.9	3,037.56	2,377.0	90	51.0	■

Assay Class: High Sensitivity DNA Assay
 Data Path: C:\...ents and Settings\Bioanalyzer\2013-02-08\2013-02-08_002.xad

Created: 2/8/2013 3:51:31 PM
 Modified: 4/5/2013 10:30:11 AM

Electropherogram Summary Continued ...



Overall Results for sample 9 : 500bp 130ul 13ug/ul Soni

Number of peaks found: 24 Corr. Area 1: 2,239.0
 Noise: 0.1

Peak table for sample 9 : 500bp 130ul 13ug/ul Soni

Peak	Size [bp]	Conc. [pg/μl]	Molarity [pmol/l]	Observations
1	35	125.00	5,411.3	Lower Marker
2	147	14.42	148.2	
3	174	58.68	510.0	
4	201	78.64	593.6	
5	217	62.49	435.5	
6	227	36.53	244.0	
7	244	75.45	468.3	
8	260	74.75	435.1	
9	297	165.16	841.4	
10	305	39.31	195.2	
11	331	95.89	438.9	
12	379	65.90	263.5	
13	406	50.21	187.3	
14	449	95.93	323.7	
15	481	110.25	347.0	
16	502	105.48	318.4	
17	546	67.48	187.3	
18	569	64.15	170.9	
19	589	84.53	217.5	
20	625	83.24	201.7	
21	660	87.55	200.9	
22	687	72.86	160.7	
23	762	109.58	217.9	
24	863	178.83	313.9	
25	1,032	343.10	503.7	
26	10,380	75.00	10.9	Upper Marker

Assay Class: High Sensitivity DNA Assay
Data Path: C:\...ents and Settings\Bioanalyzer\2013-02-08\2013-02-08_002.xad

Created: 2/8/2013 3:51:31 PM
Modified: 4/5/2013 10:30:11 AM

Electropherogram Summary Continued ...

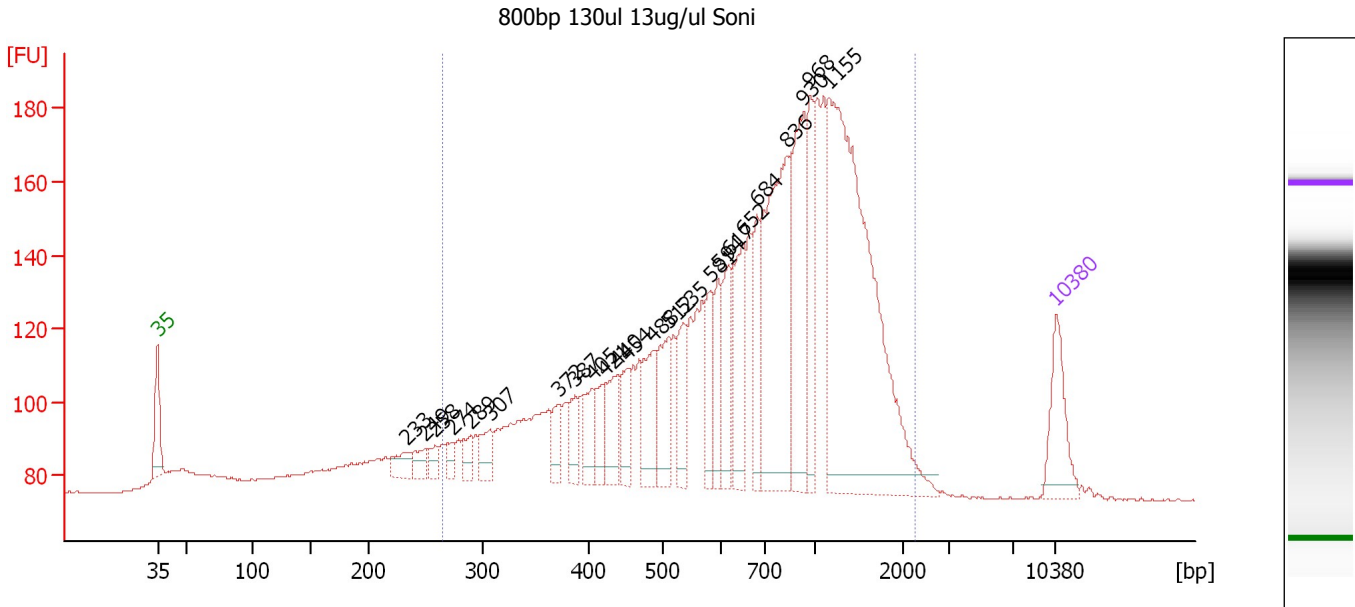
... Region table for sample 9 : 500bp 130ul 13ug/ul Soni

From [bp]	To [bp]	Average Size [bp]	Molarity [pmol/l]	Conc. [pg/μl]	Corr. Area	% of Total	Size distribution in CV [%]	Color
180	1,869	632	12,696.6	3,659.20	2,239.0	90	52.9	■

Assay Class: High Sensitivity DNA Assay
 Data Path: C:\...ents and Settings\Bioanalyzer\2013-02-08\2013-02-08_002.xad

Created: 2/8/2013 3:51:31 PM
 Modified: 4/5/2013 10:30:11 AM

Electropherogram Summary Continued ...



Overall Results for sample 10 : 800bp 130ul 13ug/ul Soni

Number of peaks found: 24 Corr. Area 1: 2,067.4
 Noise: 0.1

Peak table for sample 10 : 800bp 130ul 13ug/ul Soni

Peak	Size [bp]	Conc. [pg/μl]	Molarity [pmol/l]	Observations
1	35	125.00	5,411.3	Lower Marker
2	233	38.93	253.1	
3	249	30.38	184.7	
4	258	24.23	142.2	
5	274	21.23	117.4	
6	289	30.20	158.3	
7	307	43.89	216.7	
8	372	40.00	163.0	
9	387	45.64	178.6	
10	405	50.90	190.4	
11	421	47.71	171.6	
12	440	72.95	251.3	
13	454	57.44	191.9	
14	488	93.94	291.9	
15	512	100.29	297.0	
16	535	73.31	207.7	
17	581	73.38	191.4	
18	594	65.36	166.8	
19	617	90.38	222.1	
20	652	121.46	282.3	
21	684	92.42	204.6	
22	836	348.99	632.8	
23	930	203.37	331.3	
24	968	106.86	167.2	
25	1,155	695.57	912.3	
26	10,380	75.00	10.9	Upper Marker

Assay Class: High Sensitivity DNA Assay
Data Path: C:\...ents and Settings\Bioanalyzer\2013-02-08\2013-02-08_002.xad

Created: 2/8/2013 3:51:31 PM
Modified: 4/5/2013 10:30:11 AM

Electropherogram Summary Continued ...

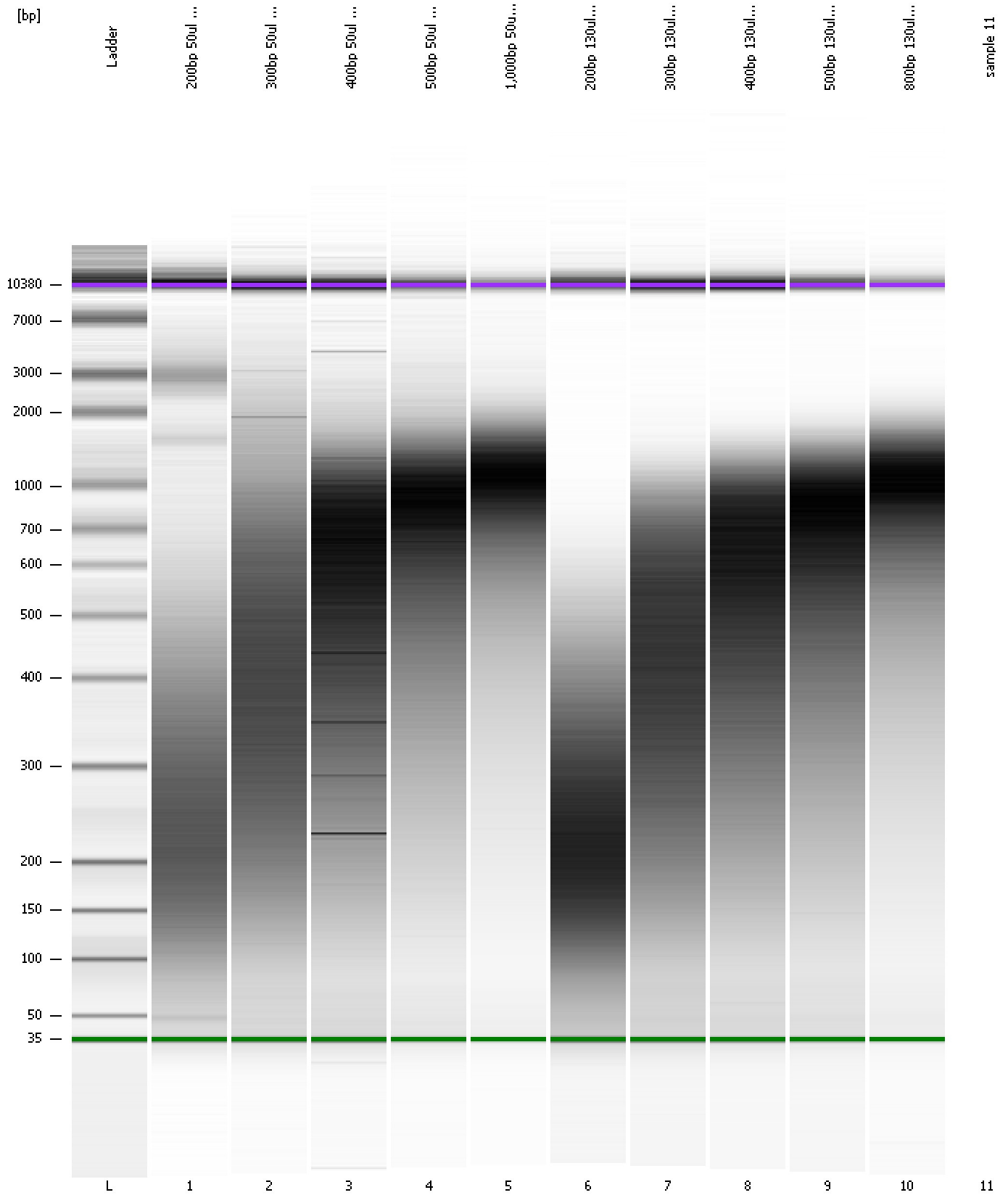
... Region table for sample 10 : **800bp 130ul 13ug/ul Soni**

From [bp]	To [bp]	Average Size [bp]	Molarity [pmol/l]	Conc. [pg/μl]	Corr. Area	% of Total	Size distribution in CV [%]	Color
264	2,245	843	8,826.1	3,486.23	2,067.4	87	50.6	■

Assay Class: High Sensitivity DNA Assay
Data Path: C:\...ents and Settings\Bioanalyzer\2013-02-08\2013-02-08_002.xad

Created: 2/8/2013 3:51:31 PM
Modified: 4/5/2013 10:30:11 AM

Gel Image

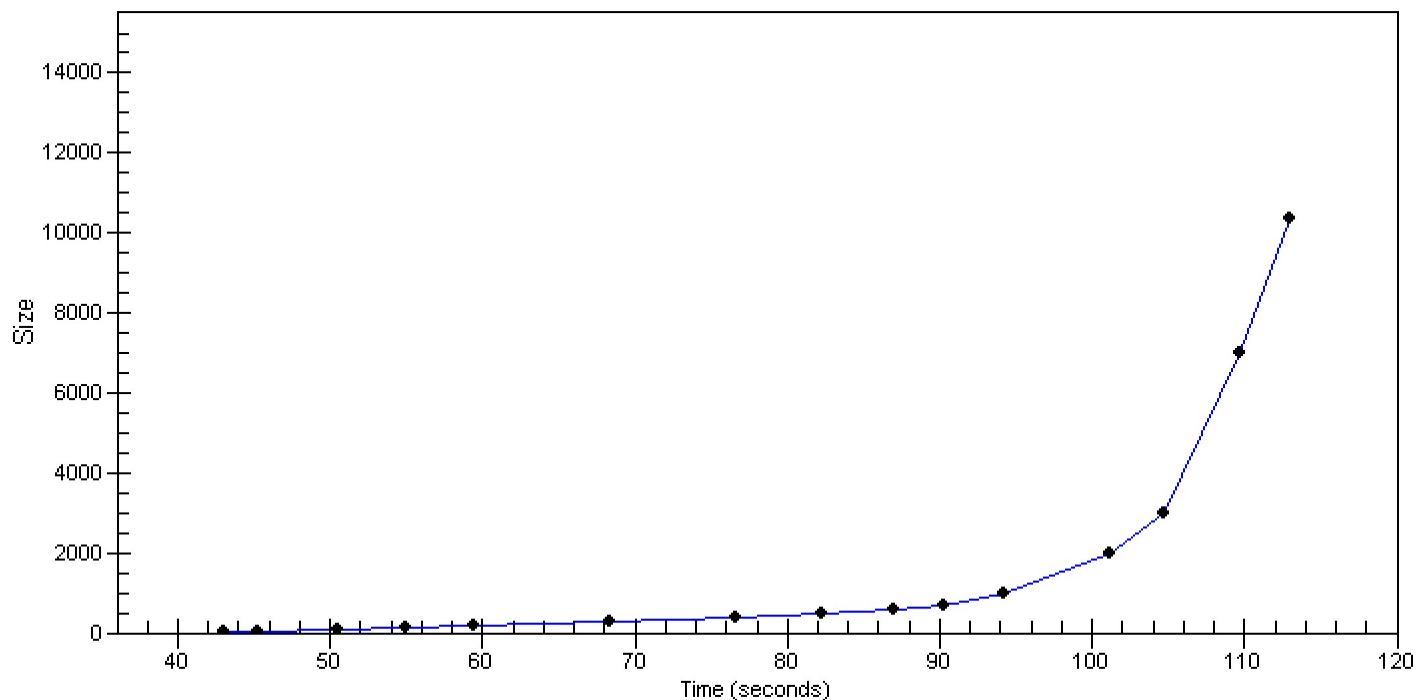


Assay Class: High Sensitivity DNA Assay
Data Path: C:\...ents and Settings\Bioanalyzer\2013-02-08\2013-02-08_002.xad

Created: 2/8/2013 3:51:31 PM
Modified: 4/5/2013 10:30:11 AM

Curves

Standard Curve



Assay Class: High Sensitivity DNA Assay
Data Path: C:\...ents and Settings\Bioanalyzer\2013-02-08\2013-02-08_002.xad

Created: 2/8/2013 3:51:31 PM
Modified: 4/5/2013 10:30:11 AM

Invalid Samples

Sample 11 has not been run, no results available.

Assay Class: High Sensitivity DNA Assay
 Data Path: C:\...ents and Settings\Bioanalyzer\2013-02-08\2013-02-08_002.xad

Created: 2/8/2013 3:51:31 PM
 Modified: 4/5/2013 10:30:11 AM

Run Logbook

Description	Number	Source	Category	Sub Category	Time	Time Zone	User	Host
Run ended on port 1 (Number of wells acquired: 11)		Instrument	Run		2/8/2013 4:30:00 PM	(GMT --08:00) Pacific Standard Time	UC Davis	D8XSMGH1
Run started on port 1 (File: C:\Documents and Settings\Bioanalyzer\2013-02-08\2013-02-08_002.xad)		Instrument	Run		2/8/2013 3:51:37 PM	(GMT --08:00) Pacific Standard Time	UC Davis	D8XSMGH1
Product Number : G2938B		Instrument	Run		2/8/2013 3:51:37 PM	(GMT --08:00) Pacific Standard Time	UC Davis	D8XSMGH1
Name :		Instrument	Run		2/8/2013 3:51:37 PM	(GMT --08:00) Pacific Standard Time	UC Davis	D8XSMGH1
Vendor : Agilent Technologies		Instrument	Run		2/8/2013 3:51:37 PM	(GMT --08:00) Pacific Standard Time	UC Davis	D8XSMGH1
Serial# : DE13701086		Instrument	Run		2/8/2013 3:51:37 PM	(GMT --08:00) Pacific Standard Time	UC Davis	D8XSMGH1
Firmware : C.01.069		Instrument	Run		2/8/2013 3:51:37 PM	(GMT --08:00) Pacific Standard Time	UC Davis	D8XSMGH1
Cartridge : Electrode		Instrument	Run		2/8/2013 3:51:37 PM	(GMT --08:00) Pacific Standard Time	UC Davis	D8XSMGH1