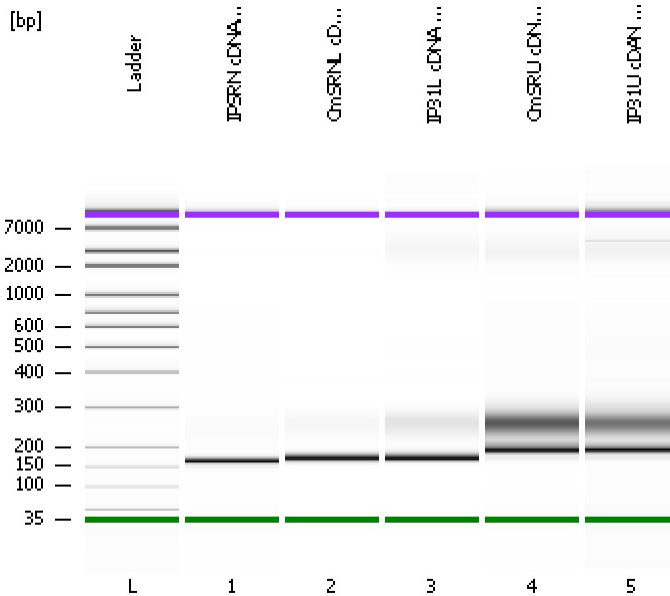


Assay Class: High Sensitivity DNA Assay  
 Data Path: C:\...Settings\Bioanalyzer\2013-02-13\2013-02-13\_001\_cDNA\_Lib.xad

Created: 2/13/2013 9:18:07 AM  
 Modified: 2/13/2013 10:09:06 AM

**Electrophoresis File Run Summary**



Instrument Information:

Instrument Name: DE13701086      Firmware: C.01.069  
 Serial#: DE13701086      Type: G2938B

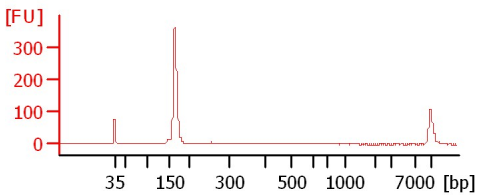
Assay Information:

Assay Origin Path: C:\Program Files\Agilent\2100 bioanalyzer\2100 expert\assays\dsDNA\High Sensitivity DNA.xsy  
 Assay Class: High Sensitivity DNA Assay  
 Version: 1.03  
 Assay Comments: Copyright © 2003-2010 Agilent Technologies

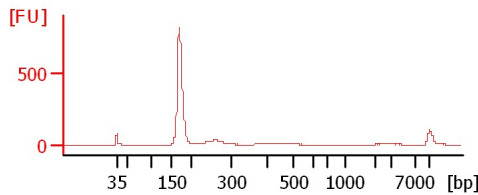
Chip Information:

Chip Lot #:   
 Reagent Kit Lot #:   
 Chip Comments:

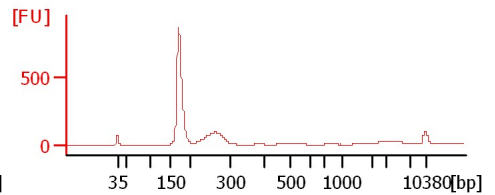
**IPSRN cDNA Lib**



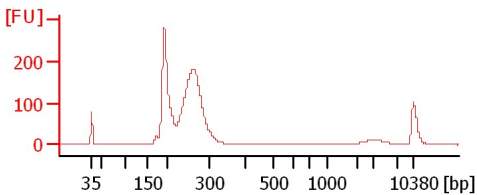
**CmSRNL cDNA Lib 1:3**



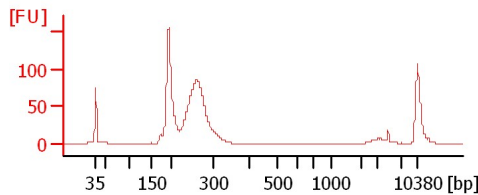
**IP31L cDNA Lib 1:2**



**CmSRU cDNA Lib**



**IP31U cDNA Lib**



Assay Class: High Sensitivity DNA Assay  
Data Path: C:\...Settings\Bioanalyzer\2013-02-13\2013-02-13\_001\_cDNA\_Lib.xad

Created: 2/13/2013 9:18:07 AM  
Modified: 2/13/2013 10:09:06 AM

**Electrophoresis File Run Summary (Chip Summary)**

Sample Name	Sample Comment	Rest. Digest	Status	Observation	Result Label	Result Color
IPSRN cDNA Lib		<input type="checkbox"/>	✓			
CmSRNL cDNA Lib 1:3		<input type="checkbox"/>	✓			
IP31L cDNA Lib 1:2		<input type="checkbox"/>	✓			
CmSRU cDNA Lib		<input type="checkbox"/>	✓			
IP31U cDNA Lib		<input type="checkbox"/>	✓			
Ladder		<input type="checkbox"/>	✓			

**Chip Lot #** **Reagent Kit Lot #**

**Chip Comments :**

Assay Class: High Sensitivity DNA Assay  
Data Path: C:\...Settings\Bioanalyzer\2013-02-13\2013-02-13\_001\_cDNA\_Lib.xad

Created: 2/13/2013 9:18:07 AM  
Modified: 2/13/2013 10:09:06 AM

**Electrophoresis Assay Details**

**General Analysis Settings**

Number of Available Sample and Ladder Wells (Max.) : 12  
Minimum Visible Range [s] : 32  
Maximum Visible Range [s] : 138  
Start Analysis Time Range [s] : 33  
End Analysis Time Range [s] : 137.5  
Ladder Concentration [pg/μl] : 1950  
Uses Standard Area for Ladder Fragments  
Lower Marker Concentration [pg/μl] : 125  
Upper Marker Concentration [pg/μl] : 75  
Used Upper Marker for Quantitation  
Standard Curve Fit is Point to Point  
Show Data Aligned to Lower and Upper Marker

**Integrator Settings**

Integration Start Time [s] : 33.05  
Integration End Time [s] : 137  
Slope Threshold : 0.8  
Height Threshold [FU] : 5  
Area Threshold : 0.1  
Width Threshold [s] : 0.6  
Baseline Plateau [s] : 0.5

**Filter Settings**

Filter Width [s] : 0.5  
Polynomial Order : 4

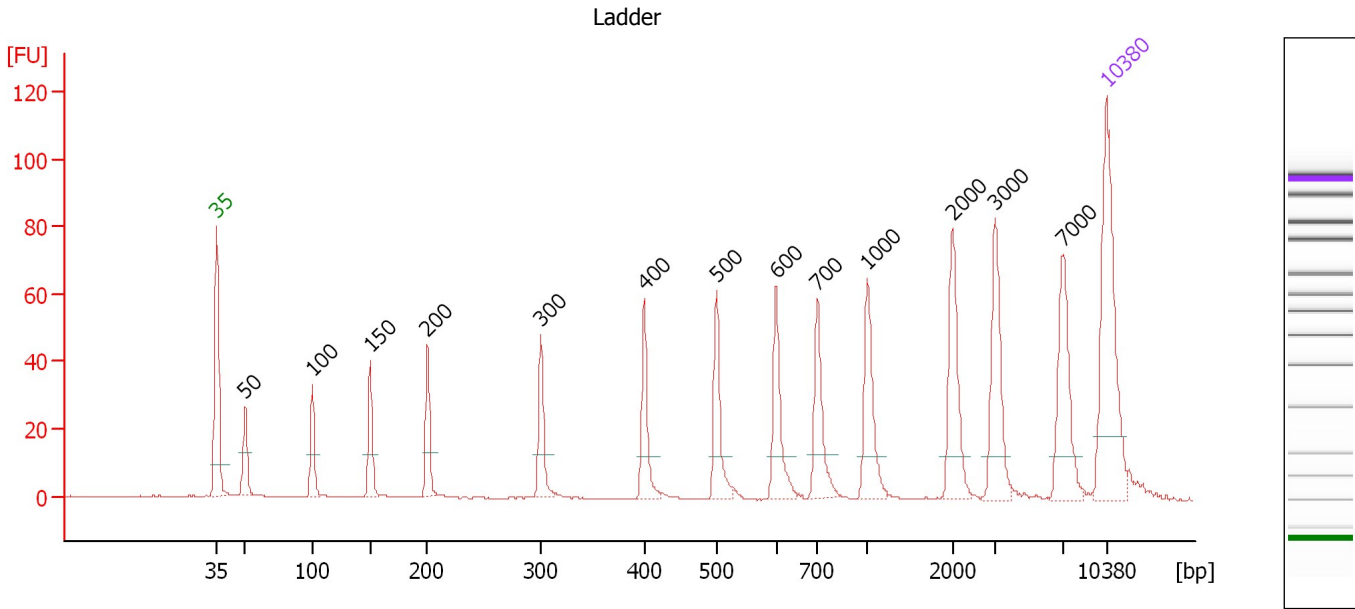
**Ladder**

Ladder Peak	Size	Area
1	35	160
2	50	210
3	100	208
4	150	221
5	200	242
6	300	270
7	400	305
8	500	306
9	600	336
10	700	321
11	1000	366
12	2000	413
13	3000	411
14	7000	400
15	10380	214

Assay Class: High Sensitivity DNA Assay  
 Data Path: C:\...Settings\Bioanalyzer\2013-02-13\2013-02-13\_001\_cDNA\_Lib.xad

Created: 2/13/2013 9:18:07 AM  
 Modified: 2/13/2013 10:09:06 AM

**Electropherogram Summary**



**Overall Results for Ladder**

Noise: 0.1

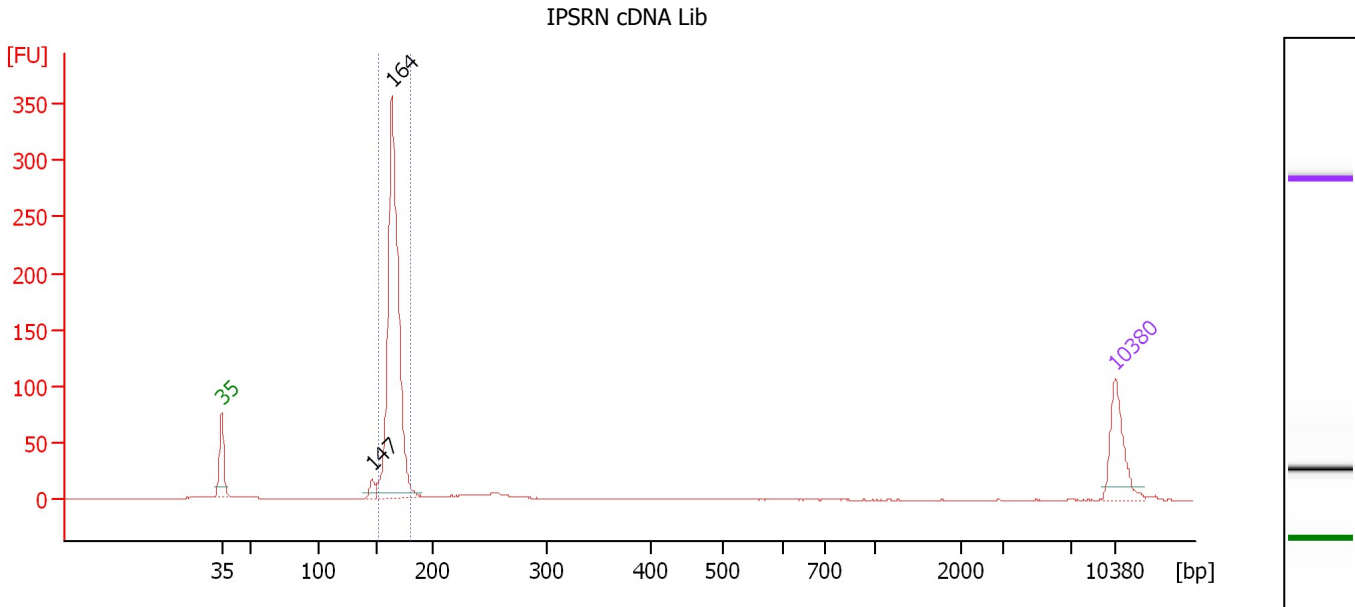
**Peak table for Ladder**

Peak	Size [bp]	Conc. [pg/μl]	Molarity [pmol/l]	Observations
1	35	125.00	5,411.3	Lower Marker
2	50	150.00	4,545.5	Ladder Peak
3	100	150.00	2,272.7	Ladder Peak
4	150	150.00	1,515.2	Ladder Peak
5	200	150.00	1,136.4	Ladder Peak
6	300	150.00	757.6	Ladder Peak
7	400	150.00	568.2	Ladder Peak
8	500	150.00	454.5	Ladder Peak
9	600	150.00	378.8	Ladder Peak
10	700	150.00	324.7	Ladder Peak
11	1,000	150.00	227.3	Ladder Peak
12	2,000	150.00	113.6	Ladder Peak
13	3,000	150.00	75.8	Ladder Peak
14	7,000	150.00	32.5	Ladder Peak
15	10,380	75.00	10.9	Upper Marker

Assay Class: High Sensitivity DNA Assay  
 Data Path: C:\...Settings\Bioanalyzer\2013-02-13\2013-02-13\_001\_cDNA\_Lib.xad

Created: 2/13/2013 9:18:07 AM  
 Modified: 2/13/2013 10:09:06 AM

**Electropherogram Summary Continued ...**



**Overall Results for sample 1 : IPSRN cDNA Lib**

Number of peaks found: 2                      Corr. Area 1: 632.1  
 Noise: 0.2

**Peak table for sample 1 : IPSRN cDNA Lib**

Peak	Size [bp]	Conc. [pg/μl]	Molarity [pmol/l]	Observations
1	35	125.00	5,411.3	Lower Marker
2	147	18.61	192.3	
3	164	753.83	6,974.0	
4	10,380	75.00	10.9	Upper Marker

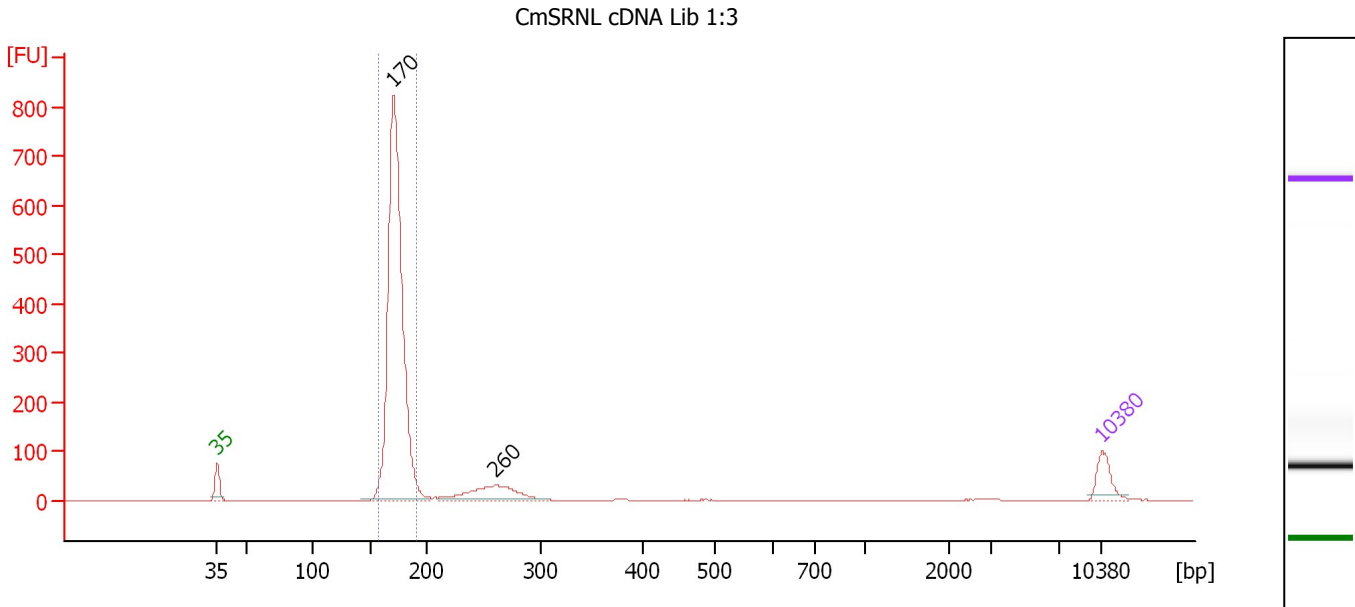
**Region table for sample 1 : IPSRN cDNA Lib**

From [bp]	To [bp]	Average Size [bp]	Molarity [pmol/l]	Conc. [pg/μl]	Corr. Area	% of Total	Size distribution in CV [%]	Color
152	181	165	6,855.6	748.79	632.1	86	2.9	Blue

Assay Class: High Sensitivity DNA Assay  
 Data Path: C:\...Settings\Bioanalyzer\2013-02-13\2013-02-13\_001\_cDNA\_Lib.xad

Created: 2/13/2013 9:18:07 AM  
 Modified: 2/13/2013 10:09:06 AM

**Electropherogram Summary Continued ...**



**Overall Results for sample 2 : CmSRNL cDNA Lib 1:3**

Number of peaks found: 2                      Corr. Area 1: 1,982.7  
 Noise: 0.1

**Peak table for sample 2 : CmSRNL cDNA Lib 1:3**

Peak	Size [bp]	Conc. [pg/μl]	Molarity [pmol/l]	Observations
1	35	125.00	5,411.3	Lower Marker
2	170	2,351.11	20,897.8	
3	260	238.39	1,386.7	
4	10,380	75.00	10.9	Upper Marker

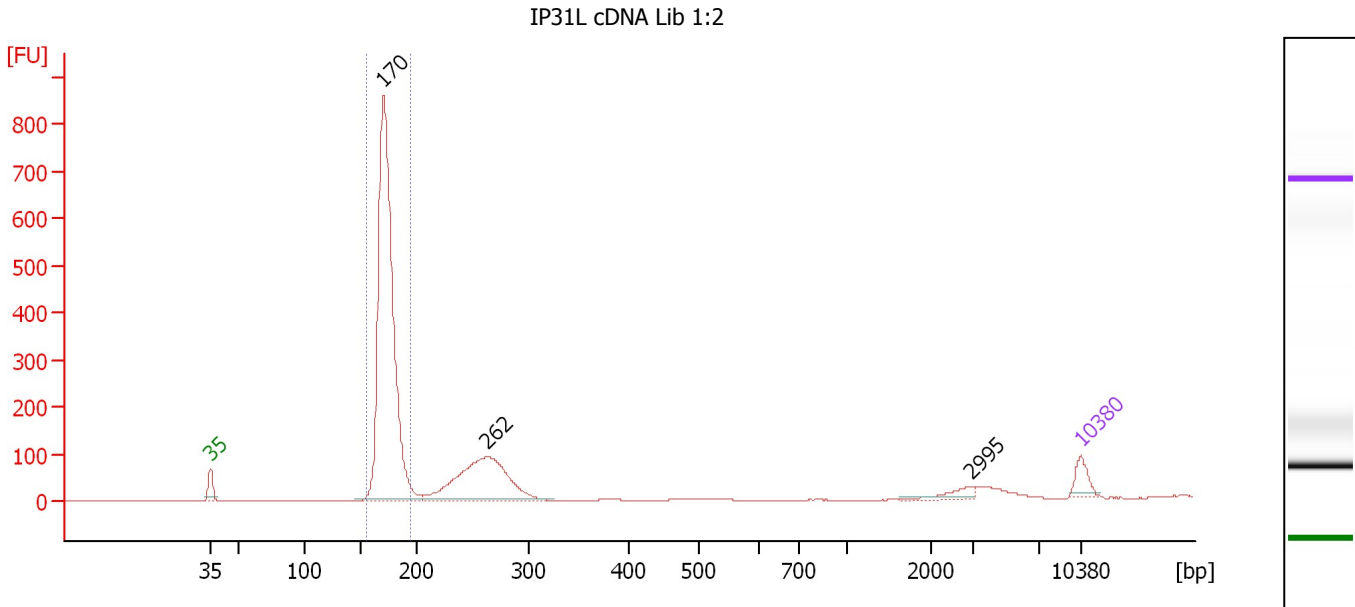
**Region table for sample 2 : CmSRNL cDNA Lib 1:3**

From [bp]	To [bp]	Average Size [bp]	Molarity [pmol/l]	Conc. [pg/μl]	Corr. Area	% of Total	Size distribution in CV [%]	Color
157	191	173	20,039.0	2,284.57	1,982.7	85	3.5	Blue

Assay Class: High Sensitivity DNA Assay  
 Data Path: C:\...Settings\Bioanalyzer\2013-02-13\2013-02-13\_001\_cDNA\_Lib.xad

Created: 2/13/2013 9:18:07 AM  
 Modified: 2/13/2013 10:09:06 AM

**Electropherogram Summary Continued ...**



**Overall Results for sample 3 : IP31L cDNA Lib 1:2**

Number of peaks found: 3                      Corr. Area 1: 2,140.6  
 Noise: 0.2

**Peak table for sample 3 : IP31L cDNA Lib 1:2**

Peak	Size [bp]	Conc. [pg/μl]	Molarity [pmol/l]	Observations
1	35	125.00	5,411.3	Lower Marker
2	170	3,292.36	29,332.0	
3	262	963.23	5,560.2	
4	2,995	54.17	27.4	
5	10,380	75.00	10.9	Upper Marker

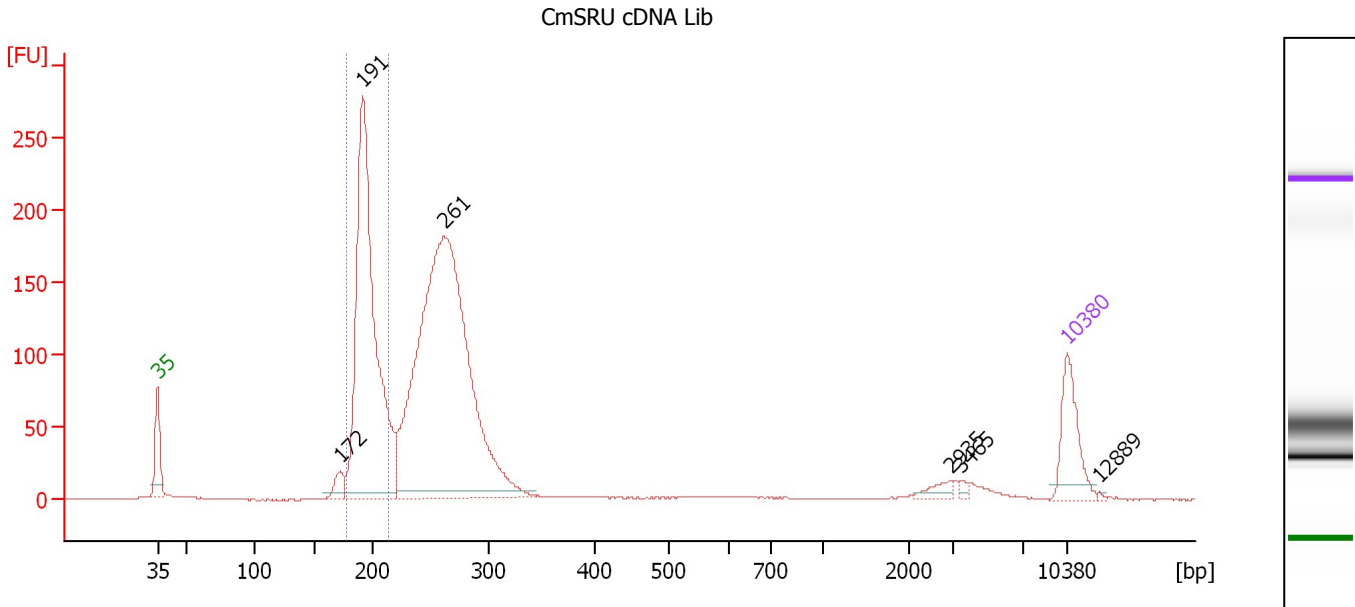
**Region table for sample 3 : IP31L cDNA Lib 1:2**

From [bp]	To [bp]	Average Size [bp]	Molarity [pmol/l]	Conc. [pg/μl]	Corr. Area	% of Total	Size distribution in CV [%]	Color
155	195	173	27,786.0	3,176.78	2,140.6	73	3.8	Blue

Assay Class: High Sensitivity DNA Assay  
 Data Path: C:\...Settings\Bioanalyzer\2013-02-13\2013-02-13\_001\_cDNA\_Lib.xad

Created: 2/13/2013 9:18:07 AM  
 Modified: 2/13/2013 10:09:06 AM

**Electropherogram Summary Continued ...**



**Overall Results for sample 4 : CmSRU cDNA Lib**

Number of peaks found: 6                      Corr. Area 1: 767.8  
 Noise: 0.2

**Peak table for sample 4 : CmSRU cDNA Lib**

Peak	Size [bp]	Conc. [pg/μl]	Molarity [pmol/l]	Observations
1	35	125.00	5,411.3	Lower Marker
2	172	34.03	300.3	
3	191	841.26	6,658.7	
4	261	1,277.81	7,411.6	
5	2,935	15.89	8.2	
6	3,465	5.12	2.2	
7	10,380	75.00	10.9	Upper Marker
8	12,889	0.00	0.0	

**Region table for sample 4 : CmSRU cDNA Lib**

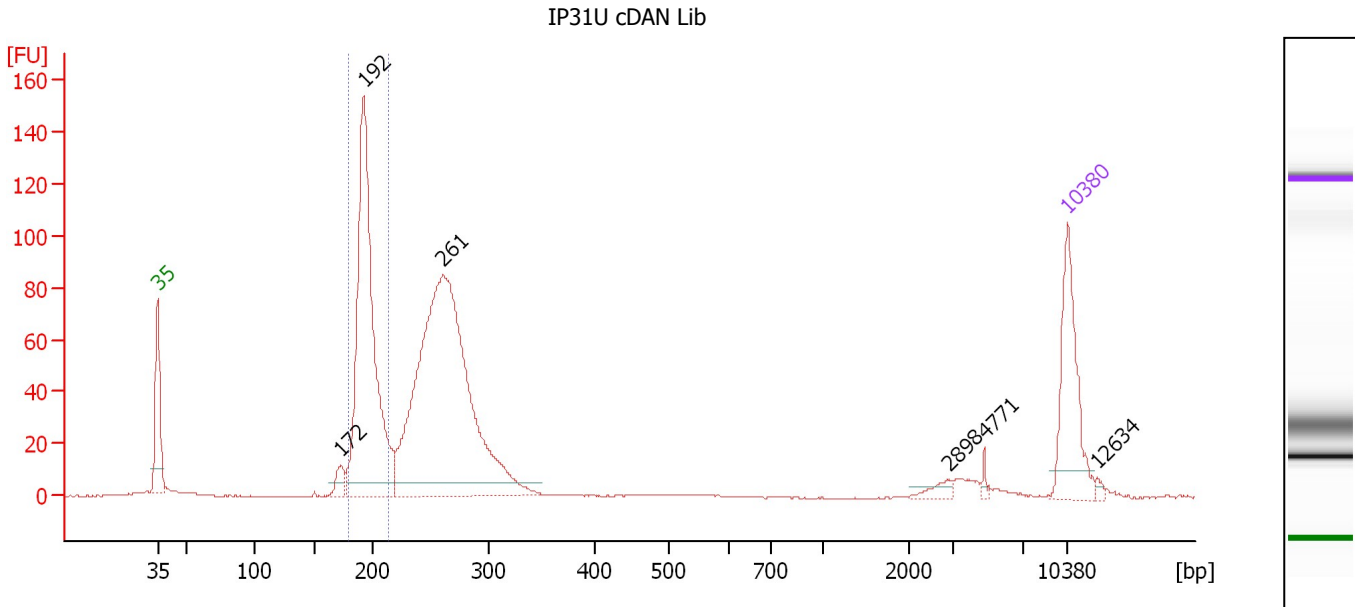
From [bp]	To [bp]	Average Size [bp]	Molarity [pmol/l]	Conc. [pg/μl]	Corr. Area	% of Total	Size distribution in CV [%]	Color
177	214	195	6,094.2	782.10	767.8	32	4.1	Blue



Assay Class: High Sensitivity DNA Assay  
 Data Path: C:\...Settings\Bioanalyzer\2013-02-13\2013-02-13\_001\_cDNA\_Lib.xad

Created: 2/13/2013 9:18:07 AM  
 Modified: 2/13/2013 10:09:06 AM

**Electropherogram Summary Continued ...**



**Overall Results for sample 5 : IP31U cDNA Lib**

Number of peaks found: 6                      Corr. Area 1: 370.5  
 Noise: 0.2

**Peak table for sample 5 : IP31U cDNA Lib**

Peak	Size [bp]	Conc. [pg/μl]	Molarity [pmol/l]	Observations
1	35	125.00	5,411.3	Lower Marker
2	172	17.92	157.5	
3	192	412.62	3,254.3	
4	261	610.48	3,550.2	
5	2,898	8.27	4.3	
6	4,771	3.60	1.1	
7	10,380	75.00	10.9	Upper Marker
8	12,634	0.00	0.0	

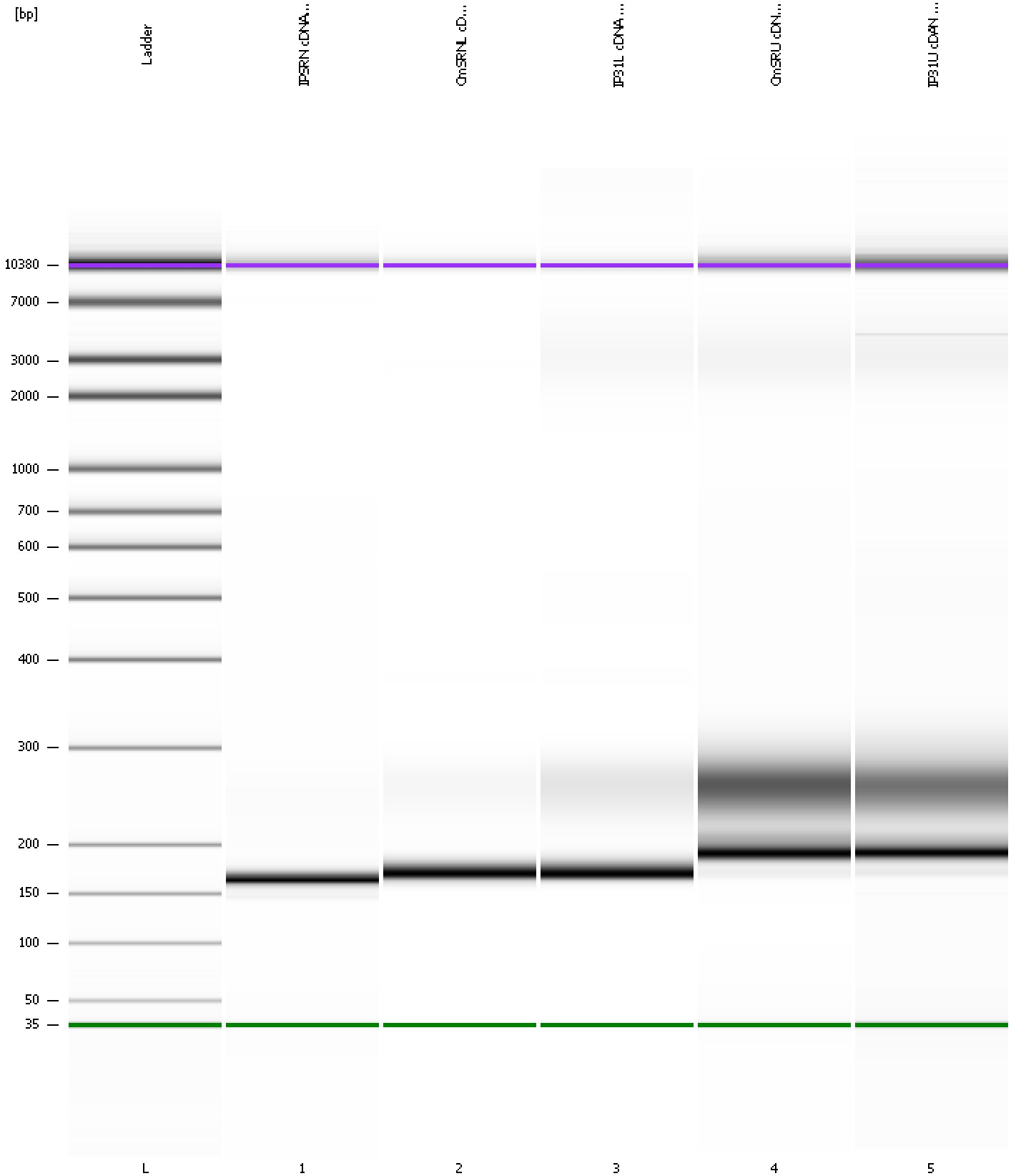
**Region table for sample 5 : IP31U cDNA Lib**

From [bp]	To [bp]	Average Size [bp]	Molarity [pmol/l]	Conc. [pg/μl]	Corr. Area	% of Total	Size distribution in CV [%]	Color
179	213	194	3,033.7	388.84	370.5	32	3.7	Blue

Assay Class: High Sensitivity DNA Assay  
Data Path: C:\...Settings\Bioanalyzer\2013-02-13\2013-02-13\_001\_cDNA\_Lib.xad

Created: 2/13/2013 9:18:07 AM  
Modified: 2/13/2013 10:09:06 AM

**Gel Image**



Assay Class: High Sensitivity DNA Assay  
 Data Path: C:\...Settings\Bioanalyzer\2013-02-13\2013-02-13\_001\_cDNA\_Lib.xad

Created: 2/13/2013 9:18:07 AM  
 Modified: 2/13/2013 10:09:06 AM

**Run Logbook**

Description	Number	Source	Category	Sub Category	Time	Time Zone	User	Host
Run ended on port 1 (Number of wells acquired: 12)		Instrument	Run		2/13/2013 9:59:25 AM	(GMT --08:00) Pacific Standard Time	UC Davis	D8XSMGH1
Run started on port 1 (File: C:\Documents and Settings\Bioanalyzer\2013-02-13\2013-02-13_001.xad)		Instrument	Run		2/13/2013 9:18:12 AM	(GMT --08:00) Pacific Standard Time	UC Davis	D8XSMGH1
Product Number : G2938B		Instrument	Run		2/13/2013 9:18:12 AM	(GMT --08:00) Pacific Standard Time	UC Davis	D8XSMGH1
Name :		Instrument	Run		2/13/2013 9:18:12 AM	(GMT --08:00) Pacific Standard Time	UC Davis	D8XSMGH1
Vendor : Agilent Technologies		Instrument	Run		2/13/2013 9:18:12 AM	(GMT --08:00) Pacific Standard Time	UC Davis	D8XSMGH1
Serial# : DE13701086		Instrument	Run		2/13/2013 9:18:12 AM	(GMT --08:00) Pacific Standard Time	UC Davis	D8XSMGH1
Firmware : C.01.069		Instrument	Run		2/13/2013 9:18:12 AM	(GMT --08:00) Pacific Standard Time	UC Davis	D8XSMGH1
Cartridge : Electrode		Instrument	Run		2/13/2013 9:18:12 AM	(GMT --08:00) Pacific Standard Time	UC Davis	D8XSMGH1