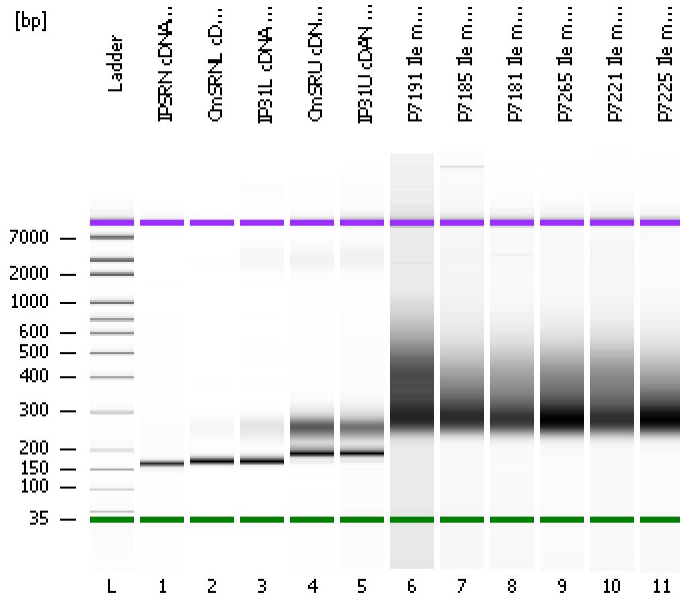


Assay Class: High Sensitivity DNA Assay
Data Path: C:\...ents and Settings\Bioanalyzer\2013-02-13\2013-02-13_001.xad

Created: 2/13/2013 9:18:07 AM
Modified: 2/13/2013 10:07:26 AM

Electrophoresis File Run Summary



Instrument Information:

Instrument Name: DE13701086 Firmware: C.01.069
Serial#: DE13701086 Type: G2938B

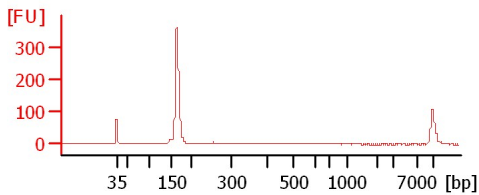
Assay Information:

Assay Origin Path: C:\Program Files\Agilent\2100 bioanalyzer\2100 expert\assays\dsDNA\High Sensitivity DNA.xsy
Assay Class: High Sensitivity DNA Assay
Version: 1.03
Assay Comments: Copyright © 2003-2010 Agilent Technologies

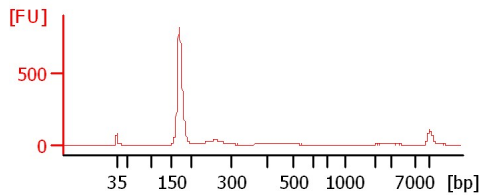
Chip Information:

Chip Lot #:
Reagent Kit Lot #:
Chip Comments:

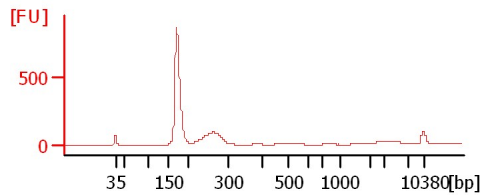
IPSRN cDNA Lib



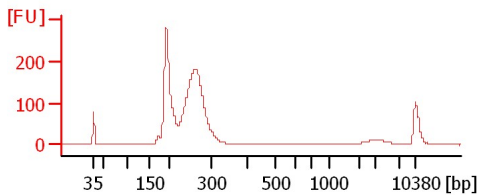
CmsRNL cDNA Lib 1:3



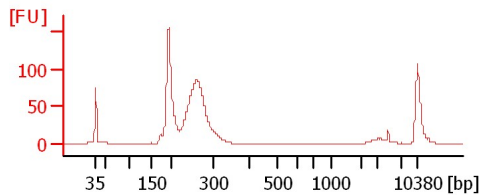
IP31L cDNA Lib 1:2



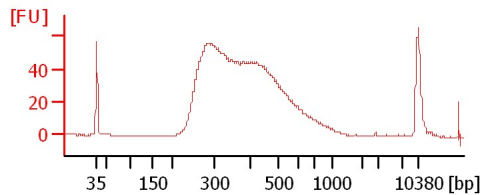
CmsSRU cDNA Lib



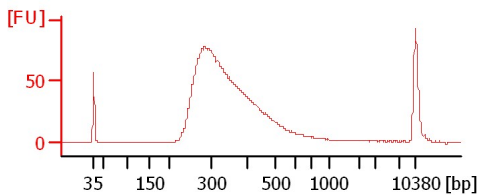
IP31U cDNA Lib



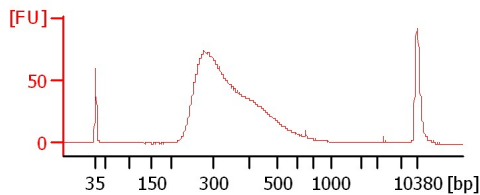
P7191 Ile mRNA Lib 1:5



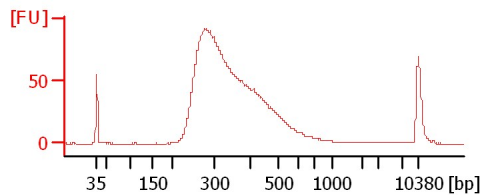
P7185 Ile mRNA Lib 1:9



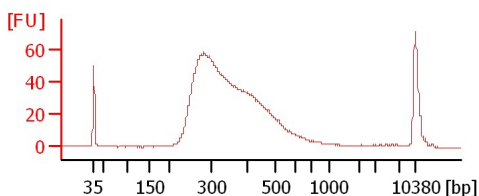
P7181 Ile mRNA Lib 1:6



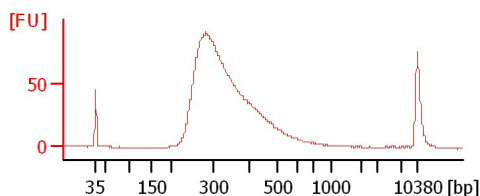
P7265 Ile mRNA Lib 1:5



P7221 Ile mRNA Lib 1:8



P7225 Ile mRNA Lib 1:4



Assay Class: High Sensitivity DNA Assay
 Data Path: C:\...ents and Settings\Bioanalyzer\2013-02-13\2013-02-13_001.xad

Created: 2/13/2013 9:18:07 AM
 Modified: 2/13/2013 10:07:26 AM

Electrophoresis File Run Summary (Chip Summary)

Sample Name	Sample Comment	Rest. Digest	Status	Observation	Result Label	Result Color
IPSRN cDNA Lib		<input type="checkbox"/>	✓			
CmSRNL cDNA Lib 1:3		<input type="checkbox"/>	✓			
IP31L cDNA Lib 1:2		<input type="checkbox"/>	✓			
CmSRU cDNA Lib		<input type="checkbox"/>	✓			
IP31U cDNA Lib		<input type="checkbox"/>	✓			
P7191 Ile mRNA Lib 1:5		<input type="checkbox"/>	✓			
P7185 Ile mRNA Lib 1:9		<input type="checkbox"/>	✓			
P7181 Ile mRNA Lib 1:6		<input type="checkbox"/>	✓			
P7265 Ile mRNA Lib 1:5		<input type="checkbox"/>	✓			
P7221 Ile mRNA Lib 1:8		<input type="checkbox"/>	✓			
P7225 Ile mRNA Lib 1:4		<input type="checkbox"/>	✓			
Ladder		<input type="checkbox"/>	✓			

Chip Lot #

Reagent Kit Lot #

Chip Comments :

Assay Class: High Sensitivity DNA Assay
 Data Path: C:\...ents and Settings\Bioanalyzer\2013-02-13\2013-02-13_001.xad

Created: 2/13/2013 9:18:07 AM
 Modified: 2/13/2013 10:07:26 AM

Electrophoresis Assay Details

General Analysis Settings

Number of Available Sample and Ladder Wells (Max.) : 12
 Minimum Visible Range [s] : 32
 Maximum Visible Range [s] : 138
 Start Analysis Time Range [s] : 33
 End Analysis Time Range [s] : 137.5
 Ladder Concentration [pg/μl] : 1950
 Uses Standard Area for Ladder Fragments
 Lower Marker Concentration [pg/μl] : 125
 Upper Marker Concentration [pg/μl] : 75
 Used Upper Marker for Quantitation
 Standard Curve Fit is Point to Point
 Show Data Aligned to Lower and Upper Marker

Integrator Settings

Integration Start Time [s] : 33.05
 Integration End Time [s] : 137
 Slope Threshold : 0.8
 Height Threshold [FU] : 5
 Area Threshold : 0.1
 Width Threshold [s] : 0.6
 Baseline Plateau [s] : 0.5

Filter Settings

Filter Width [s] : 0.5
 Polynomial Order : 4

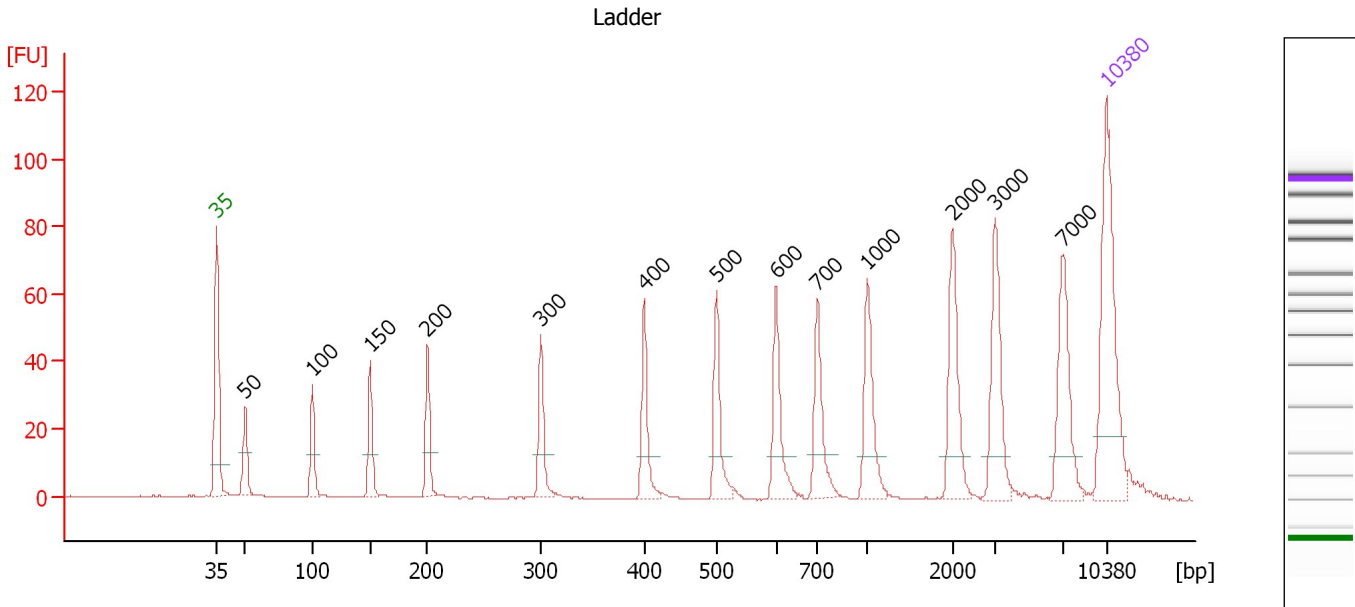
Ladder

Ladder Peak	Size	Area
1	35	160
2	50	210
3	100	208
4	150	221
5	200	242
6	300	270
7	400	305
8	500	306
9	600	336
10	700	321
11	1000	366
12	2000	413
13	3000	411
14	7000	400
15	10380	214

Assay Class: High Sensitivity DNA Assay
 Data Path: C:\...ents and Settings\Bioanalyzer\2013-02-13\2013-02-13_001.xad

Created: 2/13/2013 9:18:07 AM
 Modified: 2/13/2013 10:07:26 AM

Electropherogram Summary



Overall Results for Ladder

Noise: 0.1

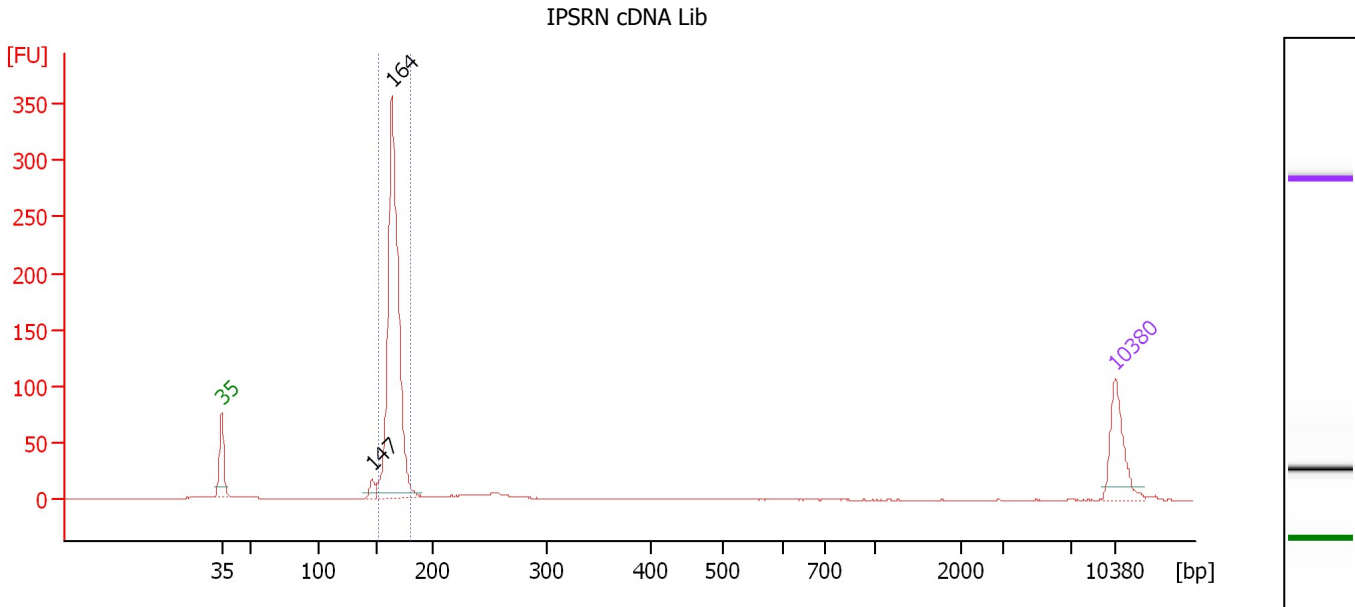
Peak table for Ladder

Peak	Size [bp]	Conc. [pg/μl]	Molarity [pmol/l]	Observations
1	35	125.00	5,411.3	Lower Marker
2	50	150.00	4,545.5	Ladder Peak
3	100	150.00	2,272.7	Ladder Peak
4	150	150.00	1,515.2	Ladder Peak
5	200	150.00	1,136.4	Ladder Peak
6	300	150.00	757.6	Ladder Peak
7	400	150.00	568.2	Ladder Peak
8	500	150.00	454.5	Ladder Peak
9	600	150.00	378.8	Ladder Peak
10	700	150.00	324.7	Ladder Peak
11	1,000	150.00	227.3	Ladder Peak
12	2,000	150.00	113.6	Ladder Peak
13	3,000	150.00	75.8	Ladder Peak
14	7,000	150.00	32.5	Ladder Peak
15	10,380	75.00	10.9	Upper Marker

Assay Class: High Sensitivity DNA Assay
 Data Path: C:\...ents and Settings\Bioanalyzer\2013-02-13\2013-02-13_001.xad

Created: 2/13/2013 9:18:07 AM
 Modified: 2/13/2013 10:07:26 AM

Electropherogram Summary Continued ...



Overall Results for sample 1 : IPSRN cDNA Lib

Number of peaks found: 2 Corr. Area 1: 632.1
 Noise: 0.2

Peak table for sample 1 : IPSRN cDNA Lib

Peak	Size [bp]	Conc. [pg/μl]	Molarity [pmol/l]	Observations
1	35	125.00	5,411.3	Lower Marker
2	147	18.61	192.3	
3	164	753.83	6,974.0	
4	10,380	75.00	10.9	Upper Marker

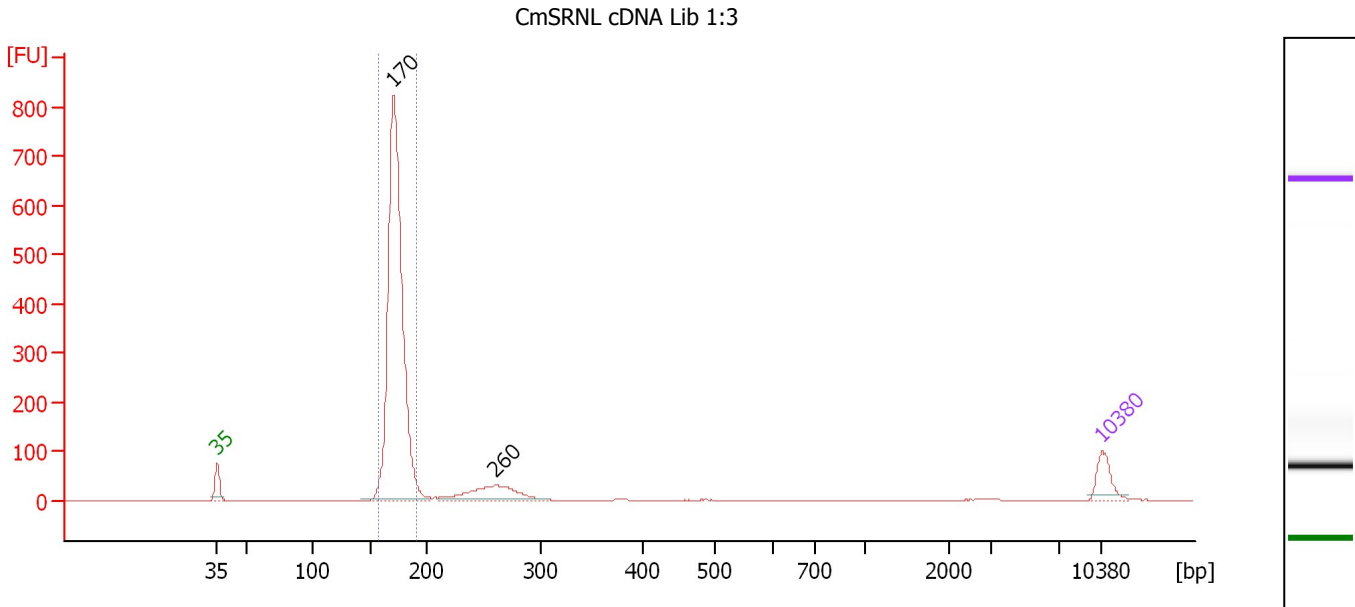
Region table for sample 1 : IPSRN cDNA Lib

From [bp]	To [bp]	Average Size [bp]	Molarity [pmol/l]	Conc. [pg/μl]	Corr. Area	% of Total	Size distribution in CV [%]	Color
152	181	165	6,855.6	748.79	632.1	86	2.9	Blue

Assay Class: High Sensitivity DNA Assay
 Data Path: C:\...ents and Settings\Bioanalyzer\2013-02-13\2013-02-13_001.xad

Created: 2/13/2013 9:18:07 AM
 Modified: 2/13/2013 10:07:26 AM

Electropherogram Summary Continued ...



Overall Results for sample 2 : CmSRNL cDNA Lib 1:3

Number of peaks found: 2 Corr. Area 1: 1,982.7
 Noise: 0.1

Peak table for sample 2 : CmSRNL cDNA Lib 1:3

Peak	Size [bp]	Conc. [pg/μl]	Molarity [pmol/l]	Observations
1	35	125.00	5,411.3	Lower Marker
2	170	2,351.11	20,897.8	
3	260	238.39	1,386.7	
4	10,380	75.00	10.9	Upper Marker

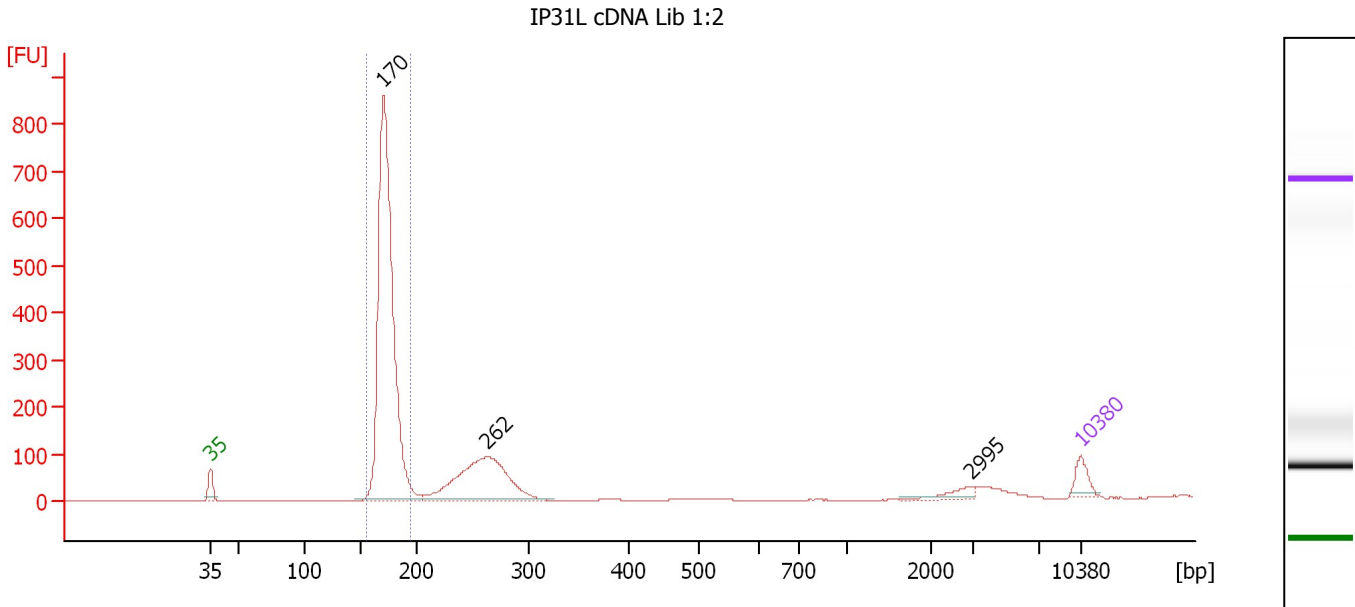
Region table for sample 2 : CmSRNL cDNA Lib 1:3

From [bp]	To [bp]	Average Size [bp]	Molarity [pmol/l]	Conc. [pg/μl]	Corr. Area	% of Total	Size distribution in CV [%]	Color
157	191	173	20,039.0	2,284.57	1,982.7	85	3.5	Blue

Assay Class: High Sensitivity DNA Assay
 Data Path: C:\...ents and Settings\Bioanalyzer\2013-02-13\2013-02-13_001.xad

Created: 2/13/2013 9:18:07 AM
 Modified: 2/13/2013 10:07:26 AM

Electropherogram Summary Continued ...



Overall Results for sample 3 : IP31L cDNA Lib 1:2

Number of peaks found: 3 Corr. Area 1: 2,140.6
 Noise: 0.2

Peak table for sample 3 : IP31L cDNA Lib 1:2

Peak	Size [bp]	Conc. [pg/μl]	Molarity [pmol/l]	Observations
1	35	125.00	5,411.3	Lower Marker
2	170	3,292.36	29,332.0	
3	262	963.23	5,560.2	
4	2,995	54.17	27.4	
5	10,380	75.00	10.9	Upper Marker

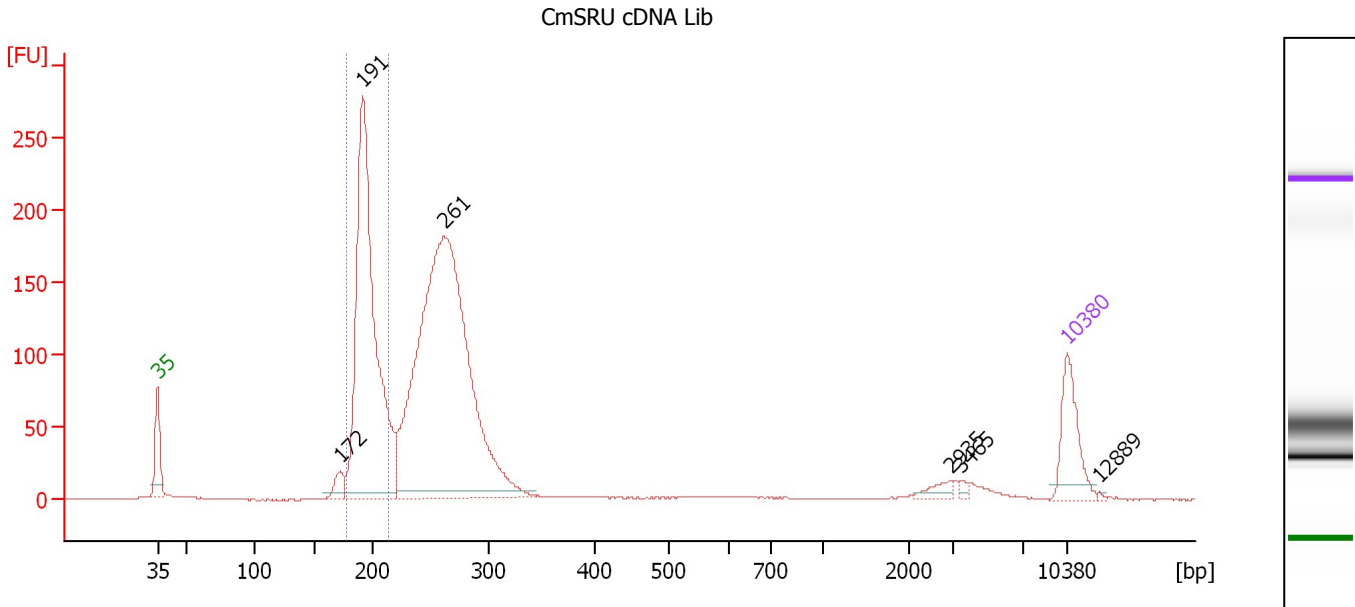
Region table for sample 3 : IP31L cDNA Lib 1:2

From [bp]	To [bp]	Average Size [bp]	Molarity [pmol/l]	Conc. [pg/μl]	Corr. Area	% of Total	Size distribution in CV [%]	Color
155	195	173	27,786.0	3,176.78	2,140.6	73	3.8	Blue

Assay Class: High Sensitivity DNA Assay
 Data Path: C:\...ents and Settings\Bioanalyzer\2013-02-13\2013-02-13_001.xad

Created: 2/13/2013 9:18:07 AM
 Modified: 2/13/2013 10:07:26 AM

Electropherogram Summary Continued ...



Overall Results for sample 4 : CmSRU cDNA Lib

Number of peaks found: 6 Corr. Area 1: 767.8
 Noise: 0.2

Peak table for sample 4 : CmSRU cDNA Lib

Peak	Size [bp]	Conc. [pg/μl]	Molarity [pmol/l]	Observations
1	35	125.00	5,411.3	Lower Marker
2	172	34.03	300.3	
3	191	841.26	6,658.7	
4	261	1,277.81	7,411.6	
5	2,935	15.89	8.2	
6	3,465	5.12	2.2	
7	10,380	75.00	10.9	Upper Marker
8	12,889	0.00	0.0	

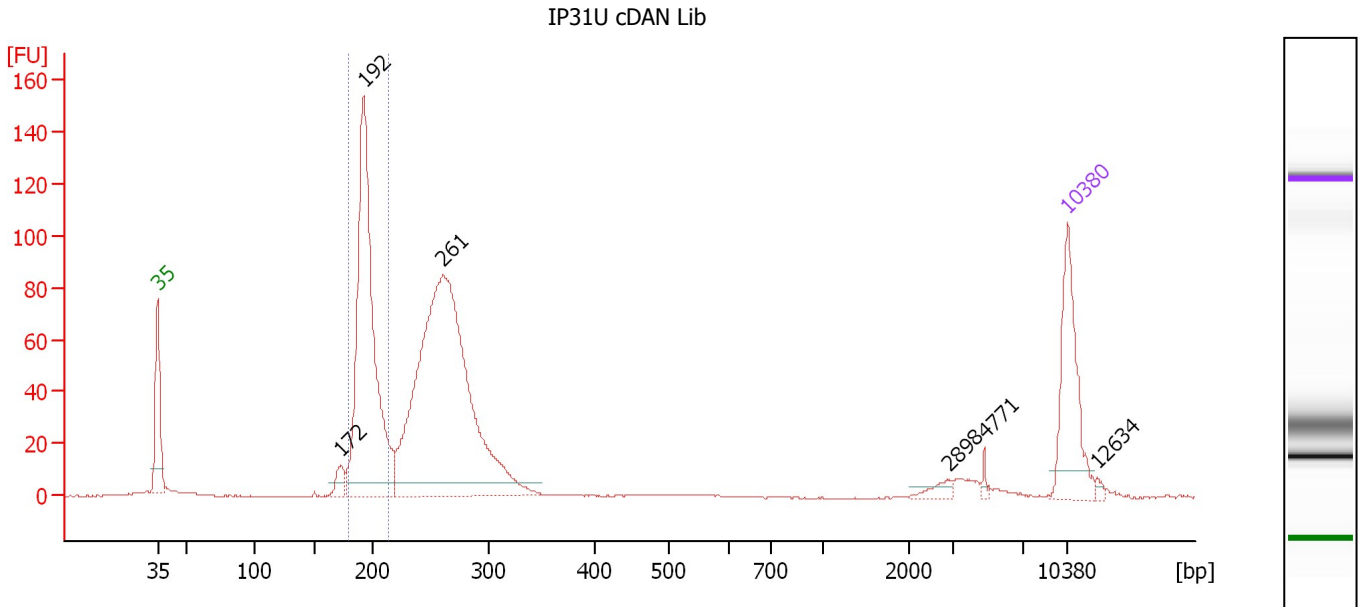
Region table for sample 4 : CmSRU cDNA Lib

From [bp]	To [bp]	Average Size [bp]	Molarity [pmol/l]	Conc. [pg/μl]	Corr. Area	% of Total	Size distribution in CV [%]	Color
177	214	195	6,094.2	782.10	767.8	32	4.1	Blue

Assay Class: High Sensitivity DNA Assay
 Data Path: C:\...ents and Settings\Bioanalyzer\2013-02-13\2013-02-13_001.xad

Created: 2/13/2013 9:18:07 AM
 Modified: 2/13/2013 10:07:26 AM

Electropherogram Summary Continued ...



Overall Results for sample 5 : IP31U cDAN Lib

Number of peaks found: 6 Corr. Area 1: 370.5
 Noise: 0.2

Peak table for sample 5 : IP31U cDAN Lib

Peak	Size [bp]	Conc. [pg/μl]	Molarity [pmol/l]	Observations
1	35	125.00	5,411.3	Lower Marker
2	172	17.92	157.5	
3	192	412.62	3,254.3	
4	261	610.48	3,550.2	
5	2,898	8.27	4.3	
6	4,771	3.60	1.1	
7	10,380	75.00	10.9	Upper Marker
8	12,634	0.00	0.0	

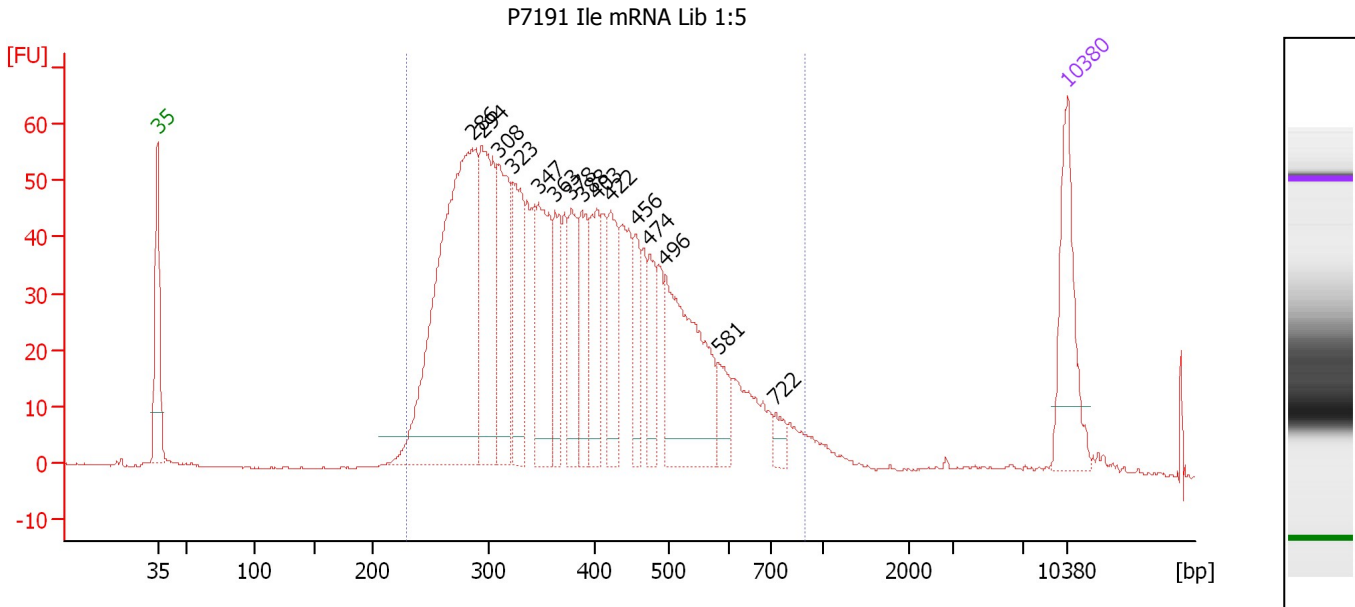
Region table for sample 5 : IP31U cDAN Lib

From [bp]	To [bp]	Average Size [bp]	Molarity [pmol/l]	Conc. [pg/μl]	Corr. Area	% of Total	Size distribution in CV [%]	Color
179	213	194	3,033.7	388.84	370.5	32	3.7	Blue

Assay Class: High Sensitivity DNA Assay
 Data Path: C:\...ents and Settings\Bioanalyzer\2013-02-13\2013-02-13_001.xad

Created: 2/13/2013 9:18:07 AM
 Modified: 2/13/2013 10:07:26 AM

Electropherogram Summary Continued ...



Overall Results for sample 6 : P7191 Ile mRNA Lib 1:5

Number of peaks found: 15 Corr. Area 1: 1,458.3
 Noise: 0.2

Peak table for sample 6 : P7191 Ile mRNA Lib 1:5

Peak	Size [bp]	Conc. [pg/μl]	Molarity [pmol/l]	Observations
1	35	125.00	5,411.3	Lower Marker
2	286	498.41	2,641.7	
3	294	177.72	917.3	
4	308	133.72	657.4	
5	323	106.49	499.6	
6	347	124.36	543.4	
7	363	62.81	262.4	
8	378	73.24	293.6	
9	388	67.39	263.1	
10	403	73.65	276.7	
11	422	74.95	269.2	
12	456	43.30	143.7	
13	474	47.89	153.0	
14	496	181.53	554.7	
15	581	30.87	80.5	
16	722	14.55	30.5	
17	10,380	75.00	10.9	Upper Marker

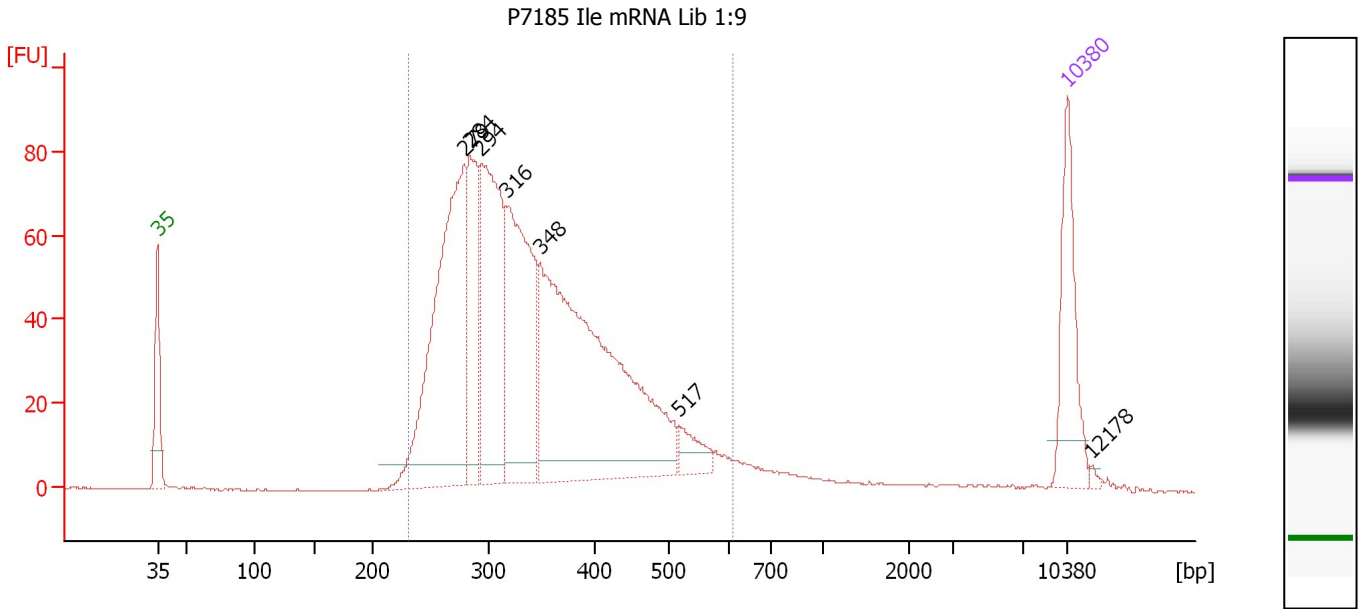
Region table for sample 6 : P7191 Ile mRNA Lib 1:5

From [bp]	To [bp]	Average Size [bp]	Molarity [pmol/l]	Conc. [pg/μl]	Corr. Area	% of Total	Size distribution in CV [%]	Color
229	894	396	9,296.1	2,174.24	1,458.3	96	29.9	Blue

Assay Class: High Sensitivity DNA Assay
 Data Path: C:\...ents and Settings\Bioanalyzer\2013-02-13\2013-02-13_001.xad

Created: 2/13/2013 9:18:07 AM
 Modified: 2/13/2013 10:07:26 AM

Electropherogram Summary Continued ...



Overall Results for sample 7 : P7185 Ile mRNA Lib 1:9

Number of peaks found: 7 Corr. Area 1: 1,429.9
 Noise: 0.2

Peak table for sample 7 : P7185 Ile mRNA Lib 1:9

Peak	Size [bp]	Conc. [pg/μl]	Molarity [pmol/l]	Observations
1	35	125.00	5,411.3	Lower Marker
2	279	392.33	2,134.2	
3	284	132.07	705.3	
4	294	248.73	1,283.7	
5	316	254.86	1,222.8	
6	348	514.11	2,235.7	
7	517	28.11	82.5	
8	10,380	75.00	10.9	Upper Marker
9	12,178	0.00	0.0	

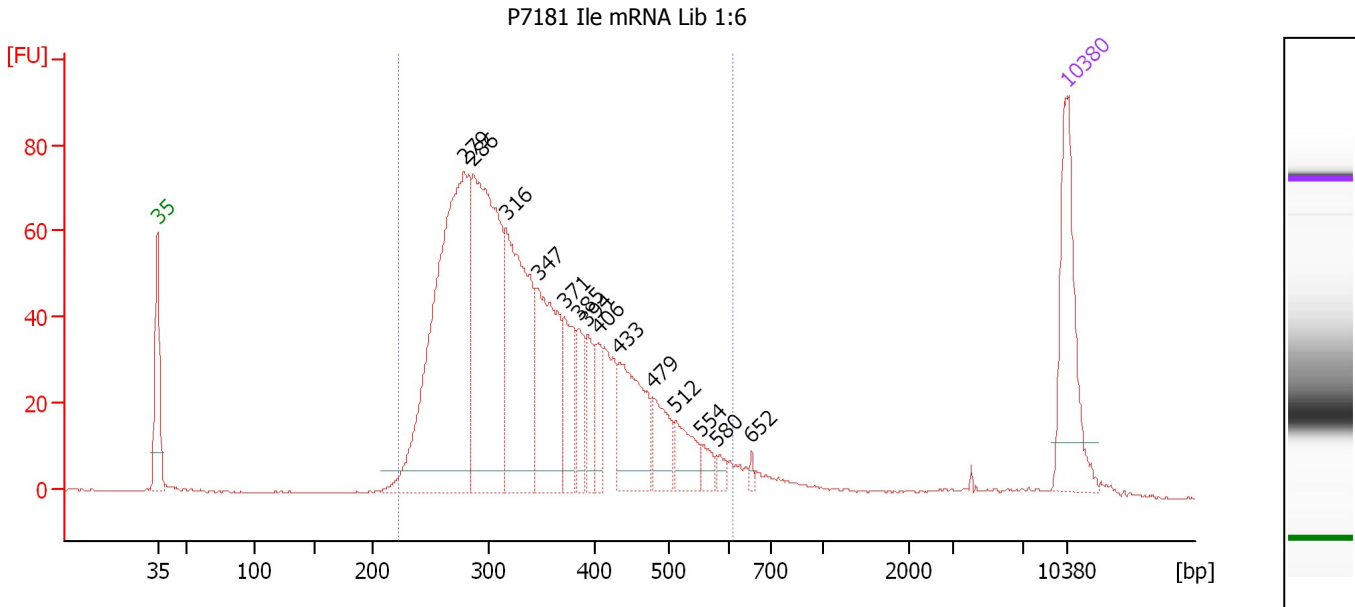
Region table for sample 7 : P7185 Ile mRNA Lib 1:9

From [bp]	To [bp]	Average Size [bp]	Molarity [pmol/l]	Conc. [pg/μl]	Corr. Area	% of Total	Size distribution in CV [%]	Color
230	606	347	7,594.9	1,629.35	1,429.9	94	22.7	Blue

Assay Class: High Sensitivity DNA Assay
 Data Path: C:\...ents and Settings\Bioanalyzer\2013-02-13\2013-02-13_001.xad

Created: 2/13/2013 9:18:07 AM
 Modified: 2/13/2013 10:07:26 AM

Electropherogram Summary Continued ...



Overall Results for sample 8 : P7181 Ile mRNA Lib 1:6

Number of peaks found: 14 Corr. Area 1: 1,362.1
 Noise: 0.1

Peak table for sample 8 : P7181 Ile mRNA Lib 1:6

Peak	Size [bp]	Conc. [pg/μl]	Molarity [pmol/l]	Observations
1	35	125.00	5,411.3	Lower Marker
2	279	420.93	2,289.8	
3	286	296.15	1,567.3	
4	316	197.23	946.3	
5	347	131.42	574.4	
6	371	55.33	225.8	
7	385	34.72	136.6	
8	394	28.03	107.9	
9	406	26.60	99.4	
10	433	87.67	306.6	
11	479	38.06	120.5	
12	512	33.63	99.6	
13	554	11.89	32.5	
14	580	6.96	18.2	
15	652	3.80	8.8	
16	10,380	75.00	10.9	Upper Marker

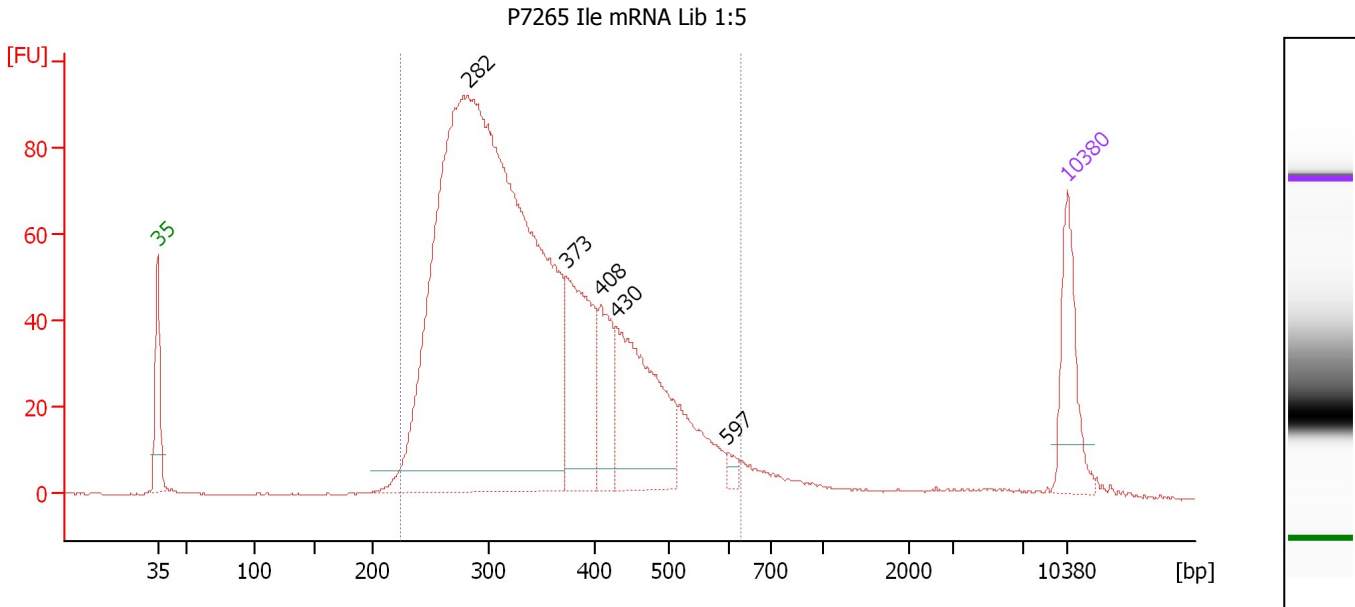
Region table for sample 8 : P7181 Ile mRNA Lib 1:6

From [bp]	To [bp]	Average Size [bp]	Molarity [pmol/l]	Conc. [pg/μl]	Corr. Area	% of Total	Size distribution in CV [%]	Color
222	606	348	6,728.6	1,439.27	1,362.1	95	23.6	Blue

Assay Class: High Sensitivity DNA Assay
 Data Path: C:\...ents and Settings\Bioanalyzer\2013-02-13\2013-02-13_001.xad

Created: 2/13/2013 9:18:07 AM
 Modified: 2/13/2013 10:07:26 AM

Electropherogram Summary Continued ...



Overall Results for sample 9 : P7265 Ile mRNA Lib 1:5

Number of peaks found: 5 Corr. Area 1: 1,716.3
 Noise: 0.2

Peak table for sample 9 : P7265 Ile mRNA Lib 1:5

Peak	Size [bp]	Conc. [pg/μl]	Molarity [pmol/l]	Observations
1	35	125.00	5,411.3	Lower Marker
2	282	1,850.40	9,947.6	
3	373	213.46	866.8	
4	408	91.46	339.4	
5	430	235.54	830.8	
6	597	11.16	28.3	
7	10,380	75.00	10.9	Upper Marker

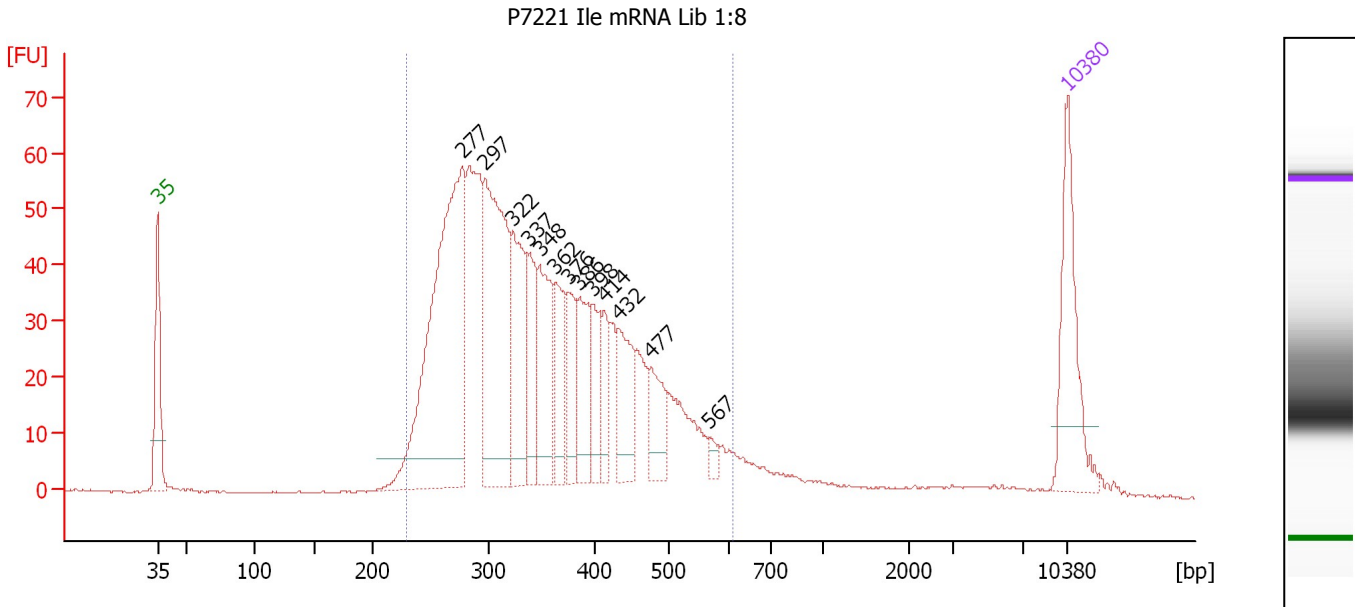
Region table for sample 9 : P7265 Ile mRNA Lib 1:5

From [bp]	To [bp]	Average Size [bp]	Molarity [pmol/l]	Conc. [pg/μl]	Corr. Area	% of Total	Size distribution in CV [%]	Color
224	626	348	11,437.4	2,444.48	1,716.3	95	24.2	Blue

Assay Class: High Sensitivity DNA Assay
 Data Path: C:\...ents and Settings\Bioanalyzer\2013-02-13\2013-02-13_001.xad

Created: 2/13/2013 9:18:07 AM
 Modified: 2/13/2013 10:07:26 AM

Electropherogram Summary Continued ...



Overall Results for sample 10 : P7221 Ile mRNA Lib 1:8

Number of peaks found: 13 Corr. Area 1: 1,149.7
 Noise: 0.2

Peak table for sample 10 : P7221 Ile mRNA Lib 1:8

Peak	Size [bp]	Conc. [pg/μl]	Molarity [pmol/l]	Observations
1	35	125.00	5,411.3	Lower Marker
2	277	390.53	2,134.9	
3	297	237.81	1,215.2	
4	322	111.27	524.3	
5	337	61.21	275.1	
6	348	90.16	392.4	
7	362	56.88	238.1	
8	376	43.91	176.8	
9	386	60.73	238.6	
10	398	41.18	156.9	
11	414	31.46	115.1	
12	432	57.41	201.3	
13	477	42.10	133.7	
14	567	7.94	21.2	
15	10,380	75.00	10.9	Upper Marker

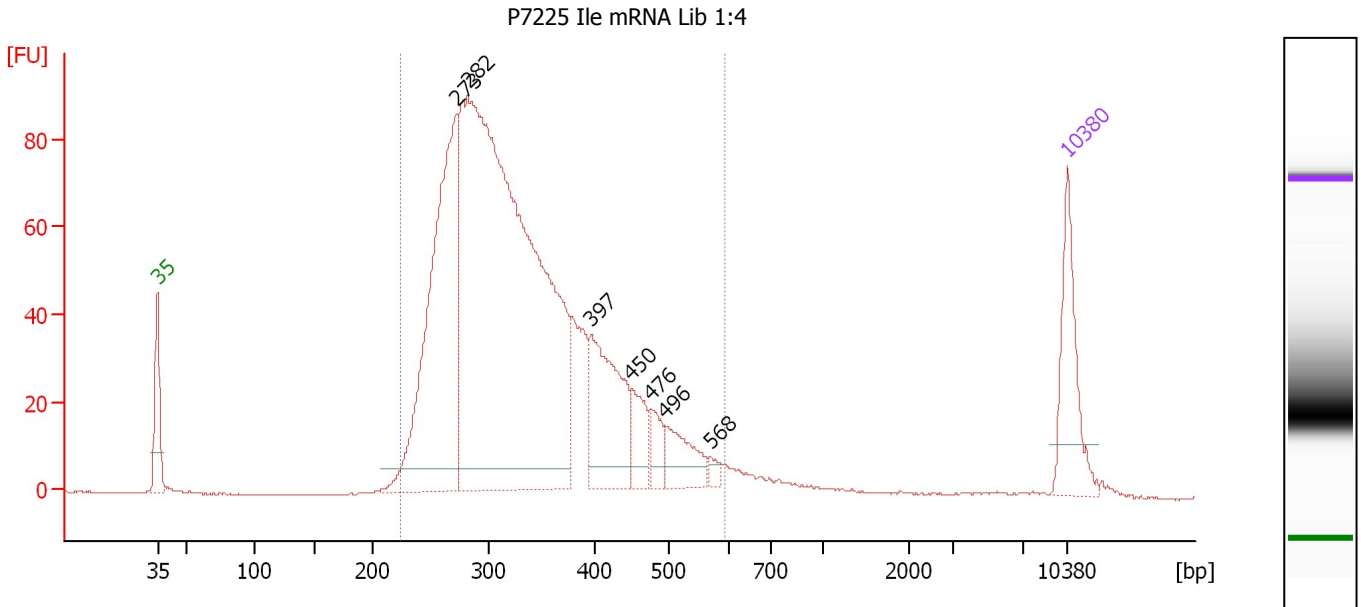
Region table for sample 10 : P7221 Ile mRNA Lib 1:8

From [bp]	To [bp]	Average Size [bp]	Molarity [pmol/l]	Conc. [pg/μl]	Corr. Area	% of Total	Size distribution in CV [%]	Color
229	607	355	7,595.0	1,650.85	1,149.7	93	23.8	Blue

Assay Class: High Sensitivity DNA Assay
 Data Path: C:\...ents and Settings\Bioanalyzer\2013-02-13\2013-02-13_001.xad

Created: 2/13/2013 9:18:07 AM
 Modified: 2/13/2013 10:07:26 AM

Electropherogram Summary Continued ...



Overall Results for sample 11 : P7225 Ile mRNA Lib 1:4

Number of peaks found: 7 Corr. Area 1: 1,493.0
 Noise: 0.1

Peak table for sample 11 : P7225 Ile mRNA Lib 1:4

Peak	Size [bp]	Conc. [pg/μl]	Molarity [pmol/l]	Observations
1	35	125.00	5,411.3	Lower Marker
2	273	468.25	2,602.5	
3	282	1,257.19	6,766.0	
4	397	156.98	598.9	
5	450	45.44	152.9	
6	476	29.55	94.1	
7	496	52.33	159.8	
8	568	8.53	22.8	
9	10,380	75.00	10.9	Upper Marker

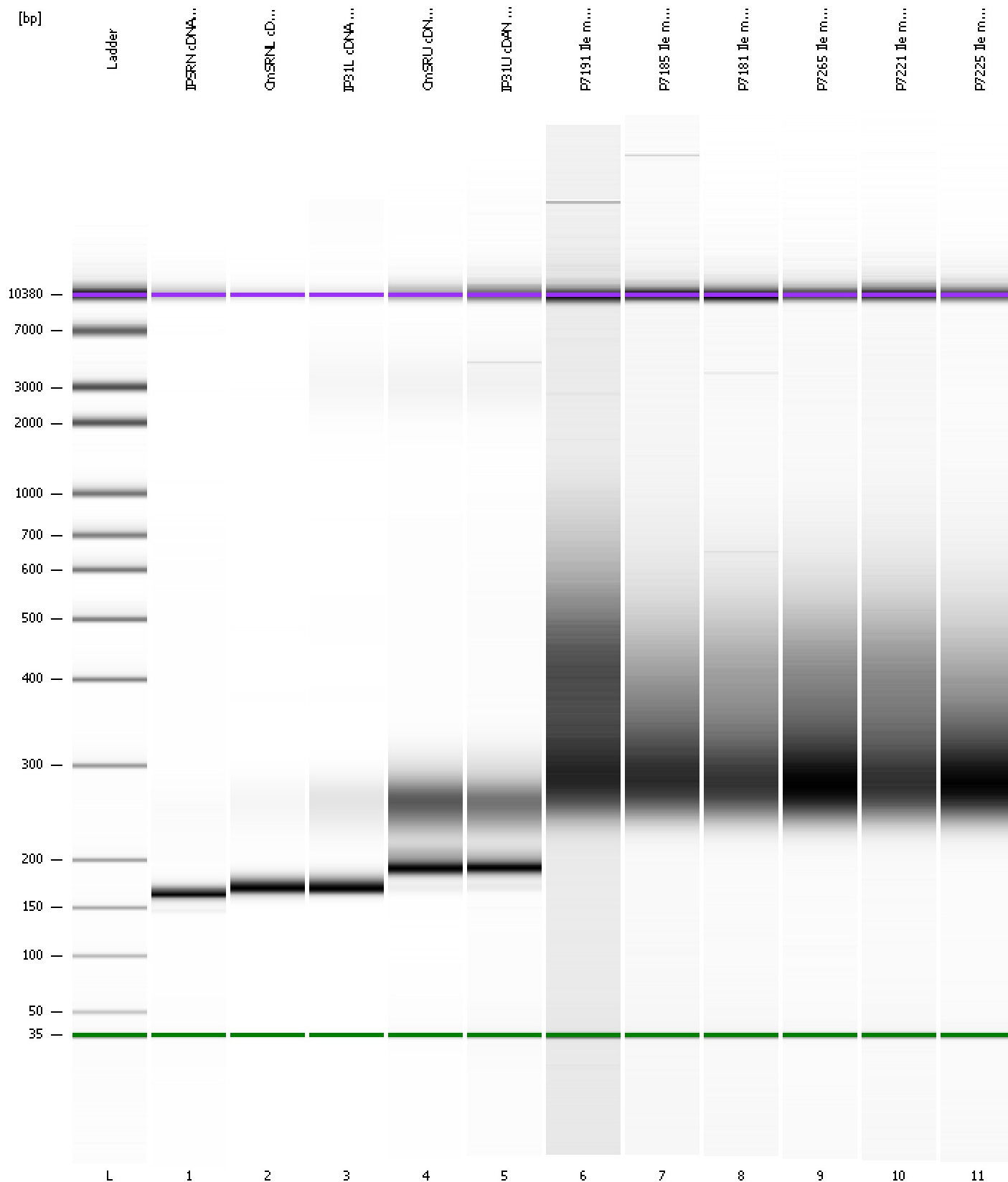
Region table for sample 11 : P7225 Ile mRNA Lib 1:4

From [bp]	To [bp]	Average Size [bp]	Molarity [pmol/l]	Conc. [pg/μl]	Corr. Area	% of Total	Size distribution in CV [%]	Color
224	592	337	9,971.7	2,086.00	1,493.0	96	22.3	Blue

Assay Class: High Sensitivity DNA Assay
Data Path: C:\...ents and Settings\Bioanalyzer\2013-02-13\2013-02-13_001.xad

Created: 2/13/2013 9:18:07 AM
Modified: 2/13/2013 10:07:26 AM

Gel Image



Assay Class: High Sensitivity DNA Assay
 Data Path: C:\...ents and Settings\Bioanalyzer\2013-02-13\2013-02-13_001.xad

Created: 2/13/2013 9:18:07 AM
 Modified: 2/13/2013 10:07:26 AM

Run Logbook

Description	Number	Source	Category	Sub Category	Time	Time Zone	User	Host
Run ended on port 1 (Number of wells acquired: 12)		Instrument	Run		2/13/2013 9:59:25 AM	(GMT --08:00) Pacific Standard Time	UC Davis	D8XSMGH1
Run started on port 1 (File: C:\Documents and Settings\Bioanalyzer\2013-02-13\2013-02-13_001.xad)		Instrument	Run		2/13/2013 9:18:12 AM	(GMT --08:00) Pacific Standard Time	UC Davis	D8XSMGH1
Product Number : G2938B		Instrument	Run		2/13/2013 9:18:12 AM	(GMT --08:00) Pacific Standard Time	UC Davis	D8XSMGH1
Name :		Instrument	Run		2/13/2013 9:18:12 AM	(GMT --08:00) Pacific Standard Time	UC Davis	D8XSMGH1
Vendor : Agilent Technologies		Instrument	Run		2/13/2013 9:18:12 AM	(GMT --08:00) Pacific Standard Time	UC Davis	D8XSMGH1
Serial# : DE13701086		Instrument	Run		2/13/2013 9:18:12 AM	(GMT --08:00) Pacific Standard Time	UC Davis	D8XSMGH1
Firmware : C.01.069		Instrument	Run		2/13/2013 9:18:12 AM	(GMT --08:00) Pacific Standard Time	UC Davis	D8XSMGH1
Cartridge : Electrode		Instrument	Run		2/13/2013 9:18:12 AM	(GMT --08:00) Pacific Standard Time	UC Davis	D8XSMGH1