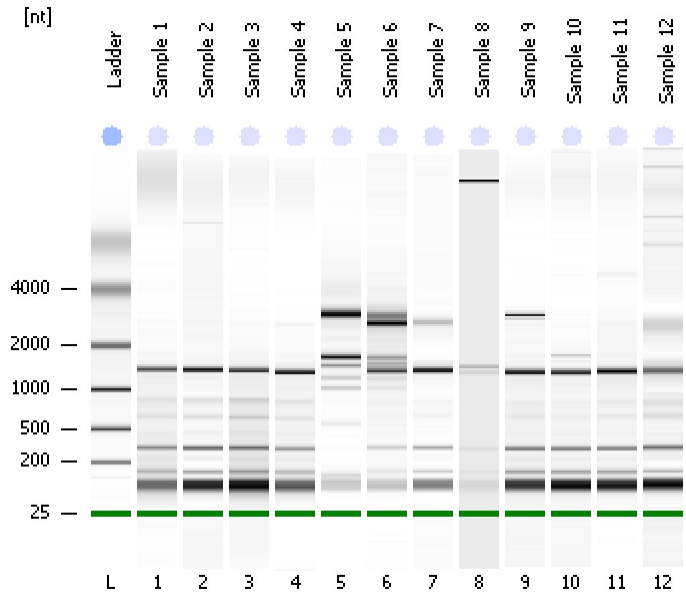


Assay Class: Eukaryote Total RNA Nano
Data Path: C:\...ents and Settings\Bioanalyzer\2013-02-13\2013-02-13_005.xad

Created: 2/13/2013 3:08:41 PM
Modified: 2/13/2013 3:54:26 PM

Electrophoresis File Run Summary



Instrument Information:

Instrument Name: DE13701086 Firmware: C.01.069
Serial#: DE13701086 Type: G2938B

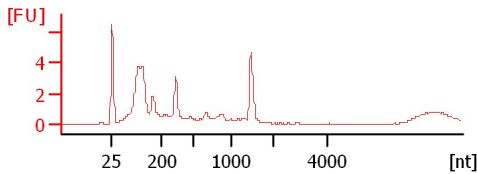
Assay Information:

Assay Origin Path: C:\Program Files\Agilent\2100 bioanalyzer\2100 expert\assays\RNA\Eukaryote Total RNA Nano Series II.xsy
Assay Class: Eukaryote Total RNA Nano
Version: 2.6
Assay Comments: Total RNA Analysis ng sensitivity (Eukaryote)
© Copyright 2003 - 2009 Agilent Technologies, Inc.

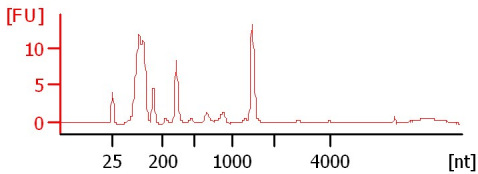
Chip Information:

Chip Lot #:
Reagent Kit Lot #:
Chip Comments:

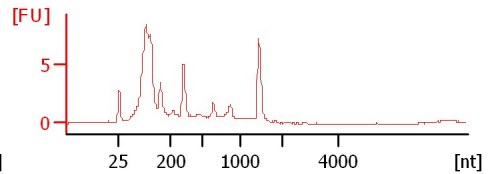
Sample 1
RIN: 6.30



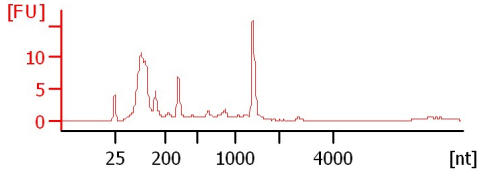
Sample 2
RIN: 5.60



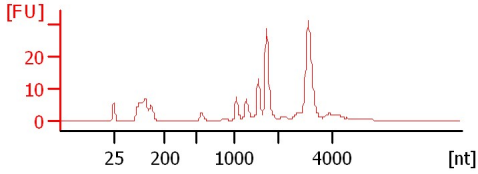
Sample 3
RIN: 5.20



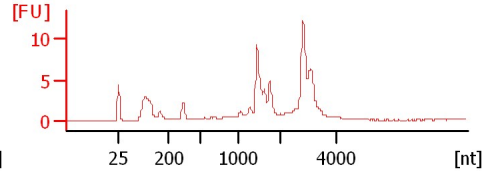
Sample 4
RIN: 6.20



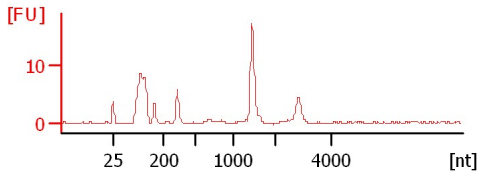
Sample 5
RIN: 8



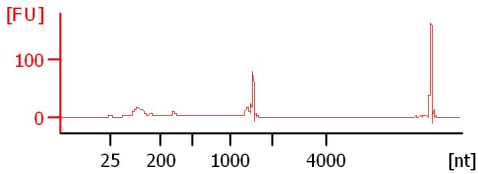
Sample 6
RIN: 6.40



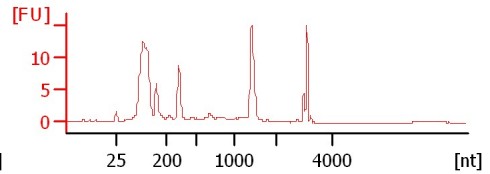
Sample 7
RIN: 5.80



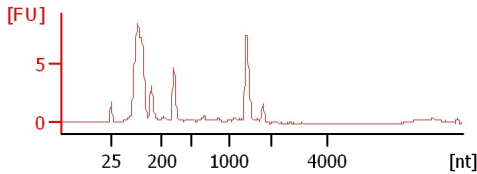
Sample 8
RIN: 6.40



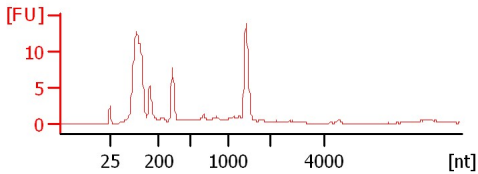
Sample 9
RIN: 7.20



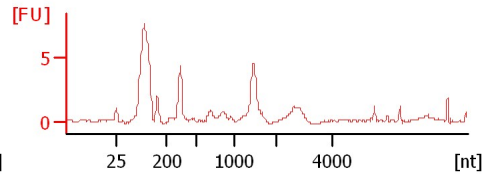
Sample 10
RIN: 6.20



Sample 11
RIN: 6.30



Sample 12
RIN: 2.70



Assay Class: Eukaryote Total RNA Nano
 Data Path: C:\...ents and Settings\Bioanalyzer\2013-02-13\2013-02-13_005.xad

Created: 2/13/2013 3:08:41 PM
 Modified: 2/13/2013 3:54:26 PM

Electrophoresis File Run Summary (Chip Summary)

Sample Name	Sample Comment	Status	Result Label	Result Color
Sample 1		✓	RIN: 6.30	
Sample 2		✓	RIN: 5.60	
Sample 3		✓	RIN: 5.20	
Sample 4		✓	RIN: 6.20	
Sample 5		✓	RIN:8	
Sample 6		✓	RIN: 6.40	
Sample 7		✓	RIN: 5.80	
Sample 8		✓	RIN: 6.40	
Sample 9		✓	RIN: 7.20	
Sample 10		✓	RIN: 6.20	
Sample 11		✓	RIN: 6.30	
Sample 12		✓	RIN: 2.70	
Ladder		✓	All Other Samples	

Chip Lot #

Reagent Kit Lot #

Chip Comments :

Assay Class: Eukaryote Total RNA Nano
Data Path: C:\...ents and Settings\Bioanalyzer\2013-02-13\2013-02-13_005.xad

Created: 2/13/2013 3:08:41 PM
Modified: 2/13/2013 3:54:26 PM

Electrophoresis Assay Details

General Analysis Settings

Number of Available Sample and Ladder Wells (Max.) : 13
Minimum Visible Range [s] : 17
Maximum Visible Range [s] : 70
Start Analysis Time Range [s] : 19
End Analysis Time Range [s] : 69
Ladder Concentration [ng/μl] : 150
Lower Marker Concentration [ng/μl] : 0
Upper Marker Concentration [ng/μl] : 0
Used Lower Marker for Quantitation
Standard Curve Fit is Logarithmic
Show Data Aligned to Lower Marker

Integrator Settings

Integration Start Time [s] : 19
Integration End Time [s] : 69
Slope Threshold : 0.6
Height Threshold [FU] : 0.5
Area Threshold : 0.2
Width Threshold [s] : 0.5
Baseline Plateau [s] : 6

Filter Settings

Filter Width [s] : 0.5
Polynomial Order : 4

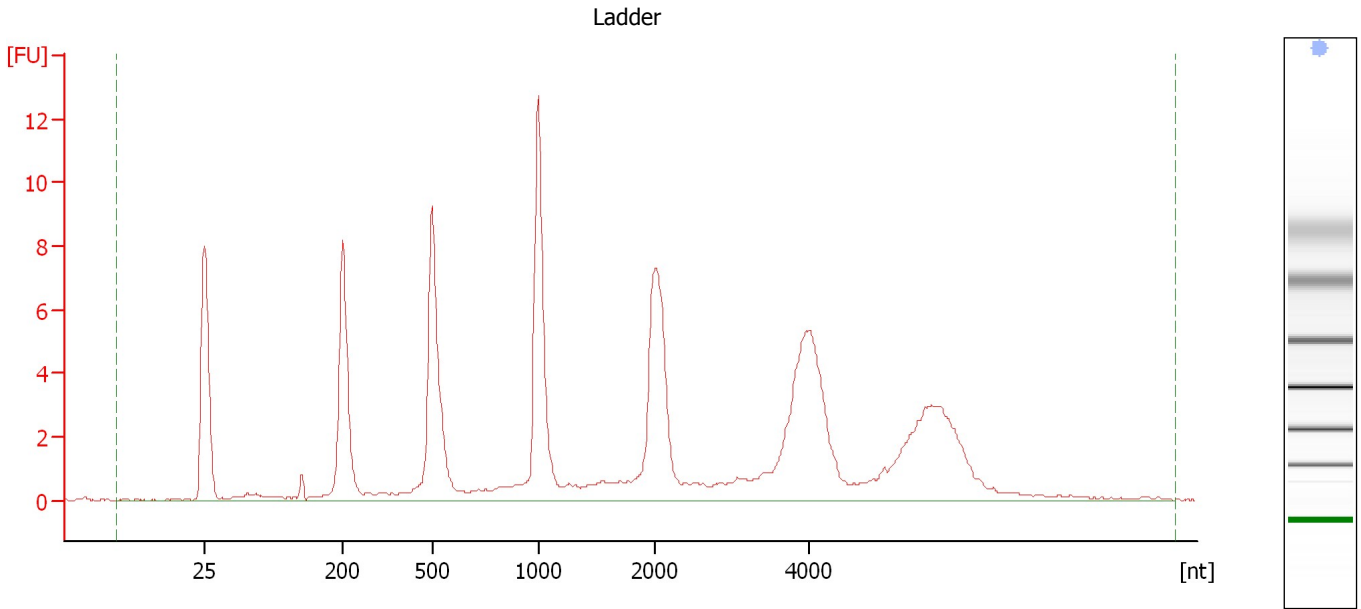
Ladder

Ladder Peak	Size
1	25
2	200
3	500
4	1000
5	2000
6	4000

Assay Class: Eukaryote Total RNA Nano
Data Path: C:\...ents and Settings\Bioanalyzer\2013-02-13\2013-02-13_005.xad

Created: 2/13/2013 3:08:41 PM
Modified: 2/13/2013 3:54:26 PM

Electropherogram Summary



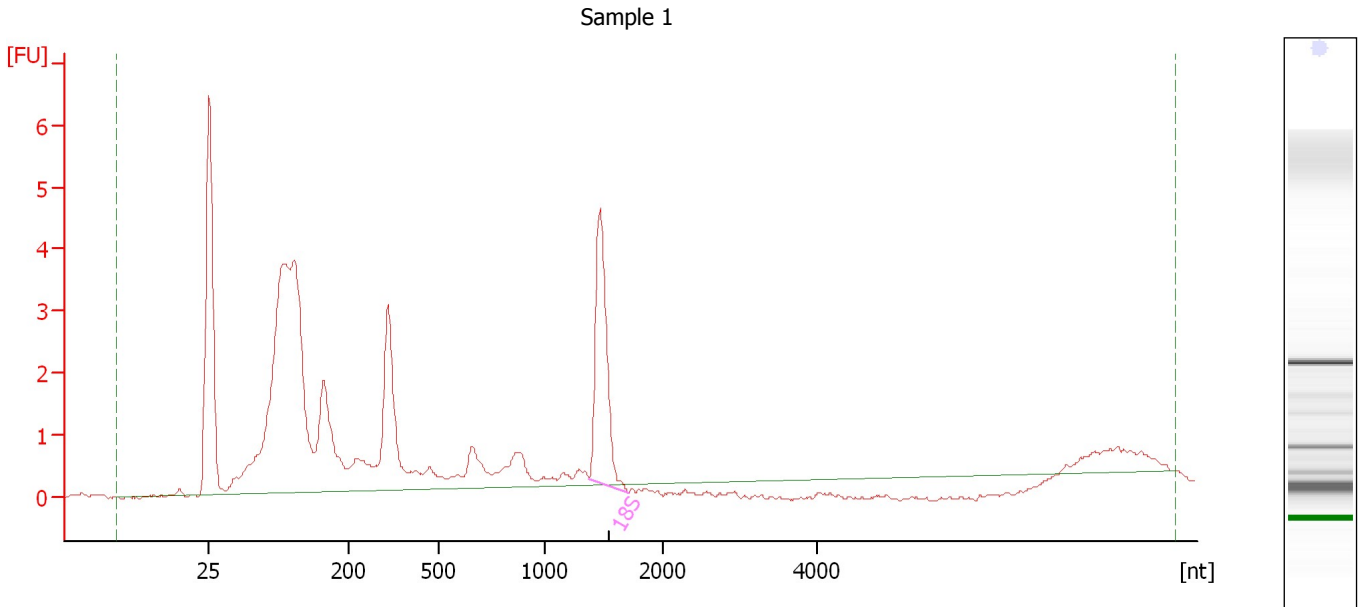
Overall Results for Ladder

RNA Area:	116.6	Result Flagging Color:	
RNA Concentration:	150 ng/ μ l	Result Flagging Label:	All Other Samples

Assay Class: Eukaryote Total RNA Nano
Data Path: C:\...ents and Settings\Bioanalyzer\2013-02-13\2013-02-13_005.xad

Created: 2/13/2013 3:08:41 PM
Modified: 2/13/2013 3:54:26 PM

Electropherogram Summary Continued ...



Overall Results for sample 1 : Sample 1

RNA Area:	50.5	RNA Integrity Number (RIN):	6.3 (B.02.08, Anomaly Threshold(s) manually adapted)
RNA Concentration:	65 ng/μl	Result Flagging Color:	
rRNA Ratio [28s / 18s]:	0.0	Result Flagging Label:	RIN: 6.30

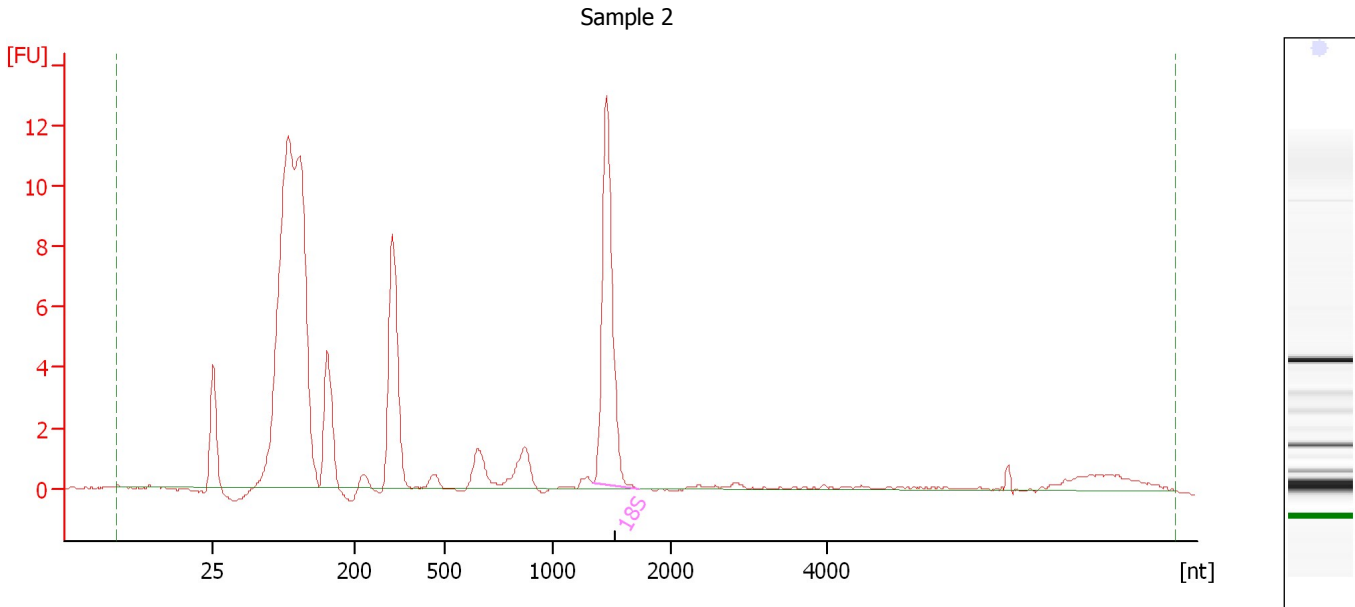
Fragment table for sample 1 : Sample 1

Name	Start Size [nt]	End Size [nt]	Area	% of total Area
18S	1,372	1,706	6.2	12.2

Assay Class: Eukaryote Total RNA Nano
Data Path: C:\...ents and Settings\Bioanalyzer\2013-02-13\2013-02-13_005.xad

Created: 2/13/2013 3:08:41 PM
Modified: 2/13/2013 3:54:26 PM

Electropherogram Summary Continued ...



Overall Results for sample 2 : Sample 2

RNA Area:	104.9	RNA Integrity Number (RIN):	5.6 (B.02.08, Anomaly Threshold(s) manually adapted)
RNA Concentration:	135 ng/μl	Result Flagging Color:	
rRNA Ratio [28s / 18s]:	0.0	Result Flagging Label:	RIN: 5.60

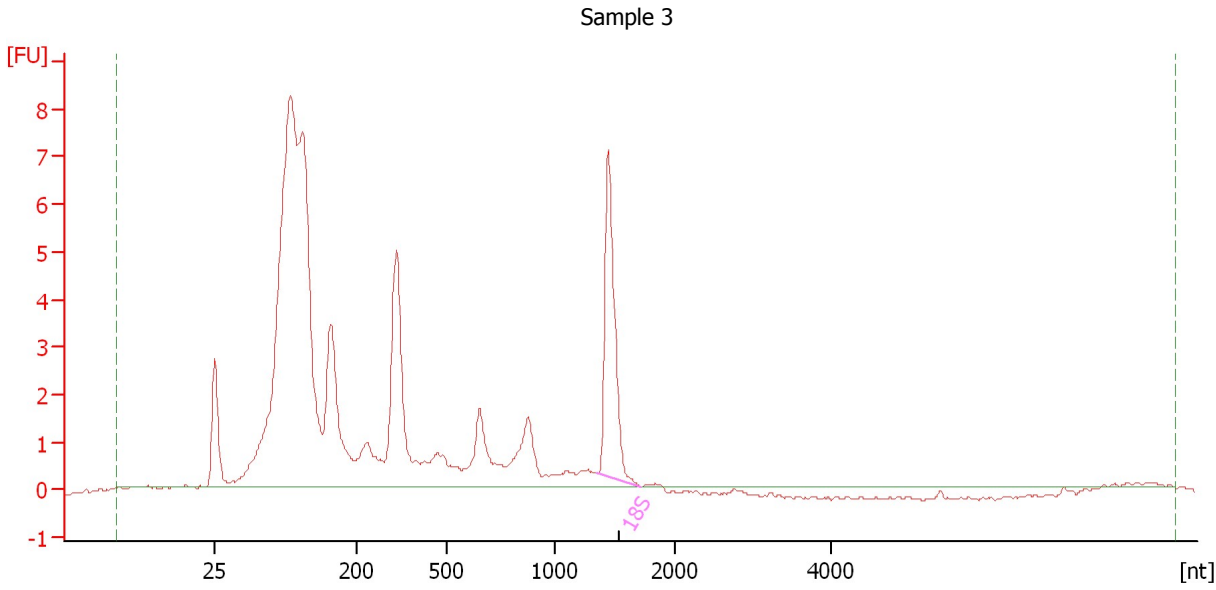
Fragment table for sample 2 : Sample 2

Name	Start Size [nt]	End Size [nt]	Area	% of total Area
18S	1,346	1,721	16.9	16.2

Assay Class: Eukaryote Total RNA Nano
 Data Path: C:\...ents and Settings\Bioanalyzer\2013-02-13\2013-02-13_005.xad

Created: 2/13/2013 3:08:41 PM
 Modified: 2/13/2013 3:54:26 PM

Electropherogram Summary Continued ...



Overall Results for sample 3 : Sample 3

RNA Area:	91.4	RNA Integrity Number (RIN):	5.2 (B.02.08, Anomaly Threshold(s) manually adapted)
RNA Concentration:	118 ng/μl	Result Flagging Color:	
rRNA Ratio [28s / 18s]:	0.0	Result Flagging Label:	RIN: 5.20

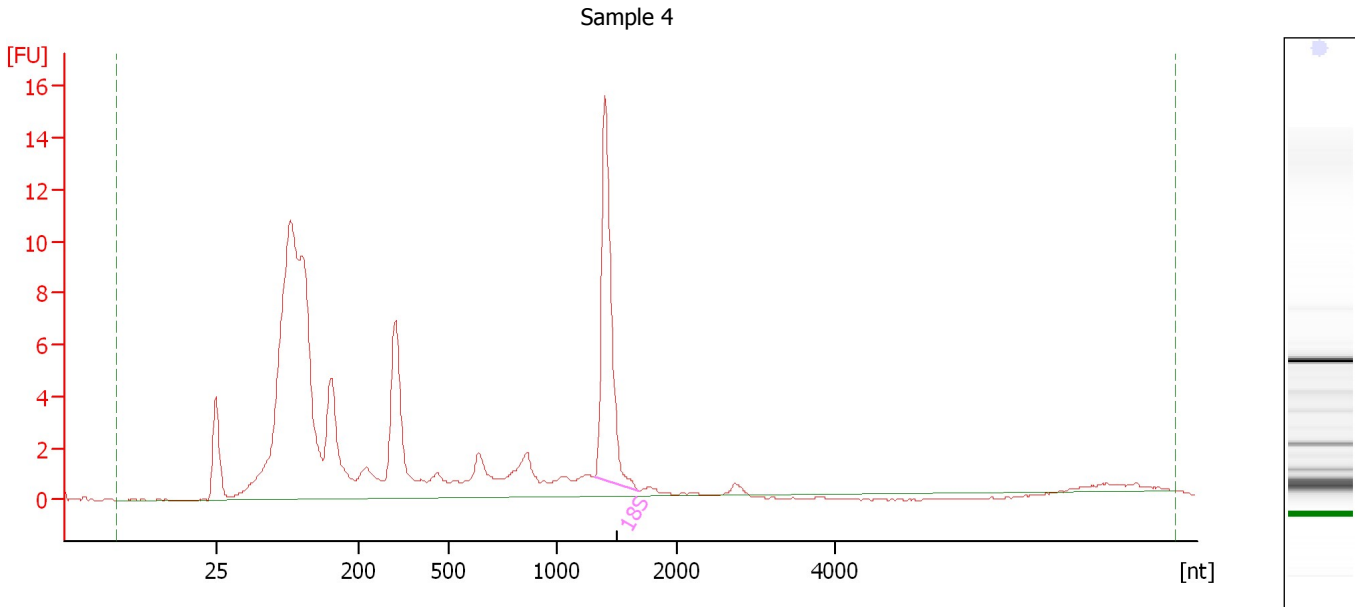
Fragment table for sample 3 : Sample 3

Name	Start Size [nt]	End Size [nt]	Area	% of total Area
18S	1,350	1,715	8.6	9.4

Assay Class: Eukaryote Total RNA Nano
Data Path: C:\...ents and Settings\Bioanalyzer\2013-02-13\2013-02-13_005.xad

Created: 2/13/2013 3:08:41 PM
Modified: 2/13/2013 3:54:26 PM

Electropherogram Summary Continued ...



Overall Results for sample 4 : Sample 4

RNA Area:	130.8	RNA Integrity Number (RIN):	6.2 (B.02.08, Anomaly Threshold(s) manually adapted)
RNA Concentration:	168 ng/μl	Result Flagging Color:	
rRNA Ratio [28s / 18s]:	0.0	Result Flagging Label:	RIN: 6.20

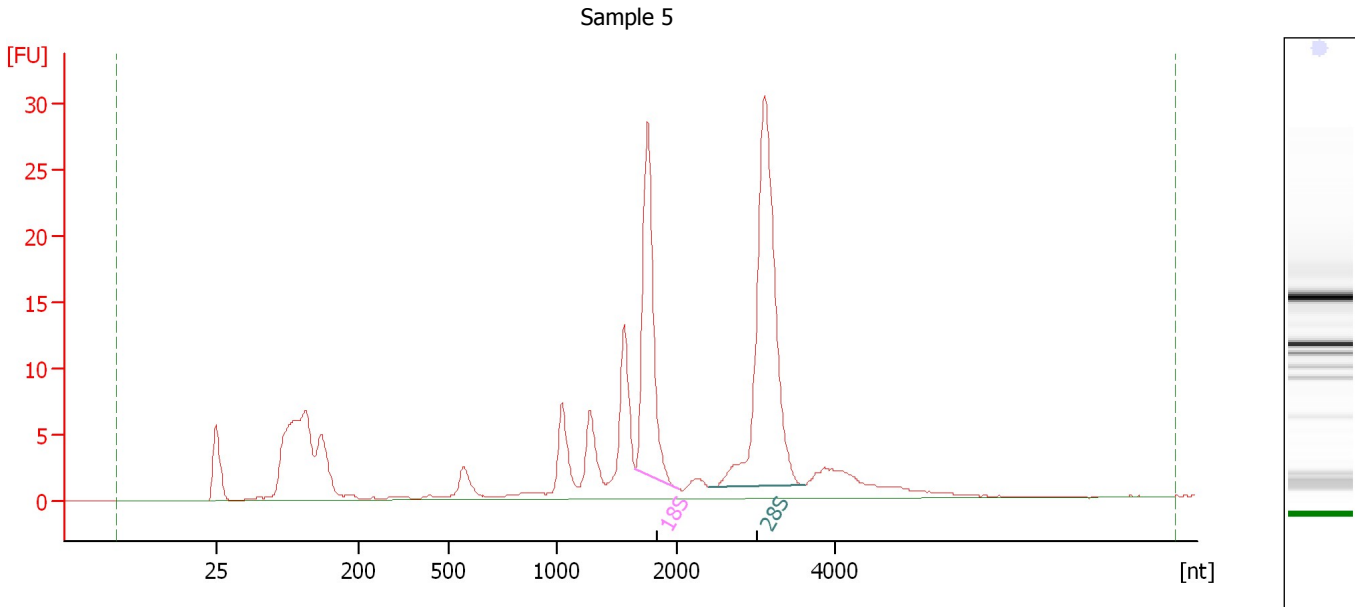
Fragment table for sample 4 : Sample 4

Name	Start Size [nt]	End Size [nt]	Area	% of total Area
18S	1,308	1,672	18.8	14.4

Assay Class: Eukaryote Total RNA Nano
 Data Path: C:\...ents and Settings\Bioanalyzer\2013-02-13\2013-02-13_005.xad

Created: 2/13/2013 3:08:41 PM
 Modified: 2/13/2013 3:54:26 PM

Electropherogram Summary Continued ...



Overall Results for sample 5 : Sample 5

RNA Area:	217.0	RNA Integrity Number (RIN):	8 (B.02.08, Anomaly Threshold(s) manually adapted)
RNA Concentration:	279 ng/μl	Result Flagging Color:	
rRNA Ratio [28s / 18s]:	1.8	Result Flagging Label:	RIN:8

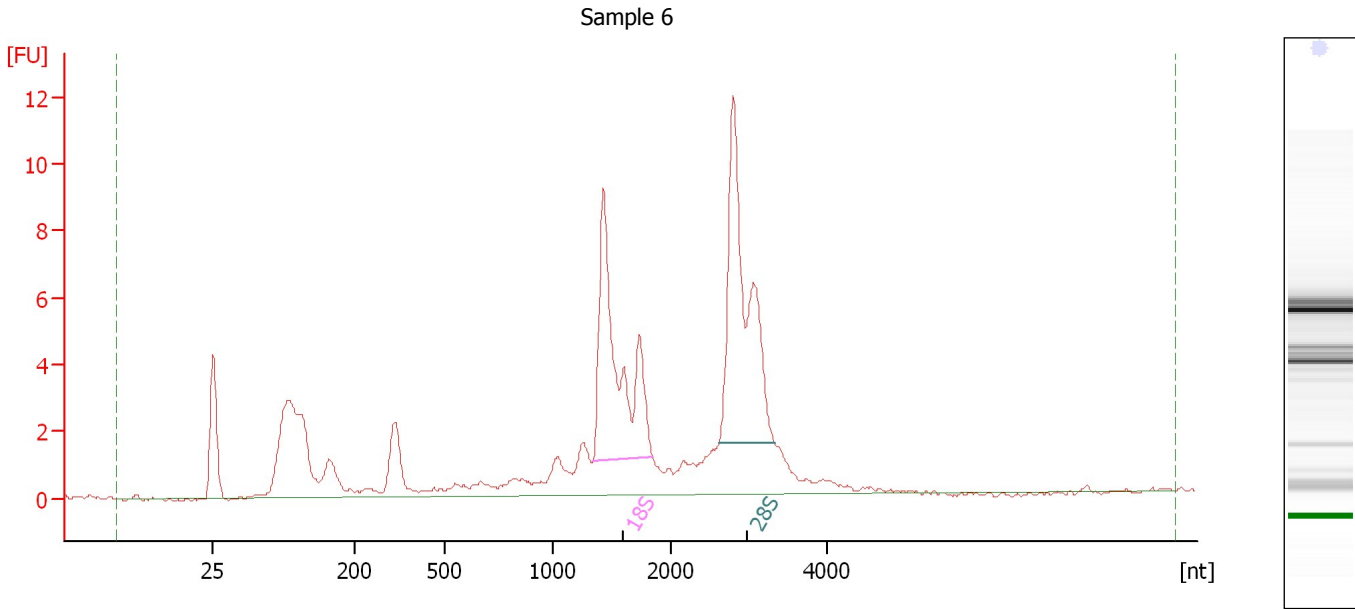
Fragment table for sample 5 : Sample 5

Name	Start Size [nt]	End Size [nt]	Area	% of total Area
18S	1,646	2,015	33.5	15.4
28S	2,398	3,615	58.7	27.1

Assay Class: Eukaryote Total RNA Nano
Data Path: C:\...ents and Settings\Bioanalyzer\2013-02-13\2013-02-13_005.xad

Created: 2/13/2013 3:08:41 PM
Modified: 2/13/2013 3:54:26 PM

Electropherogram Summary Continued ...



Overall Results for sample 6 : Sample 6

RNA Area:	97.9	RNA Integrity Number (RIN):	6.4 (B.02.08)
RNA Concentration:	126 ng/μl	Result Flagging Color:	
rRNA Ratio [28s / 18s]:	0.0	Result Flagging Label:	RIN: 6.40

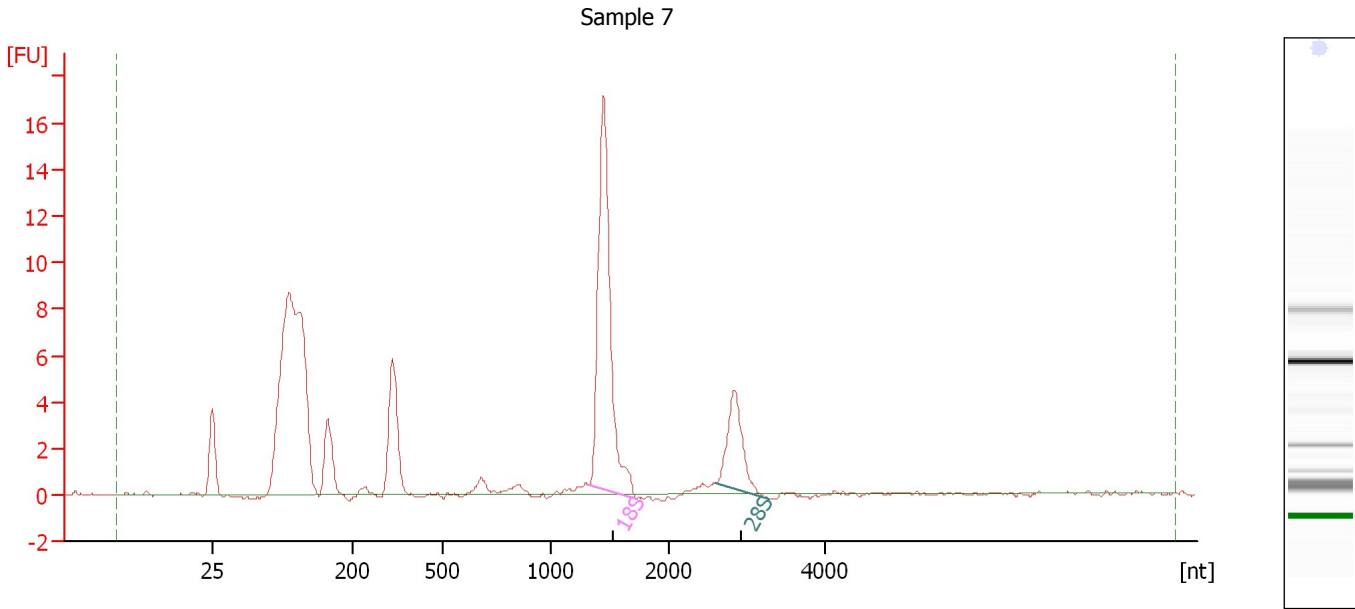
Fragment table for sample 6 : Sample 6

Name	Start Size [nt]	End Size [nt]	Area	% of total Area
18S	1,346	1,839	18.9	19.3
28S	2,616	3,316	21.4	21.8

Assay Class: Eukaryote Total RNA Nano
Data Path: C:\...ents and Settings\Bioanalyzer\2013-02-13\2013-02-13_005.xad

Created: 2/13/2013 3:08:41 PM
Modified: 2/13/2013 3:54:26 PM

Electropherogram Summary Continued ...



Overall Results for sample 7 : Sample 7

RNA Area: 91.4 RNA Integrity Number (RIN): 5.8 (B.02.08)
RNA Concentration: 118 ng/μl Result Flagging Color:
rRNA Ratio [28s / 18s]: 0.3 Result Flagging Label: RIN: 5.80

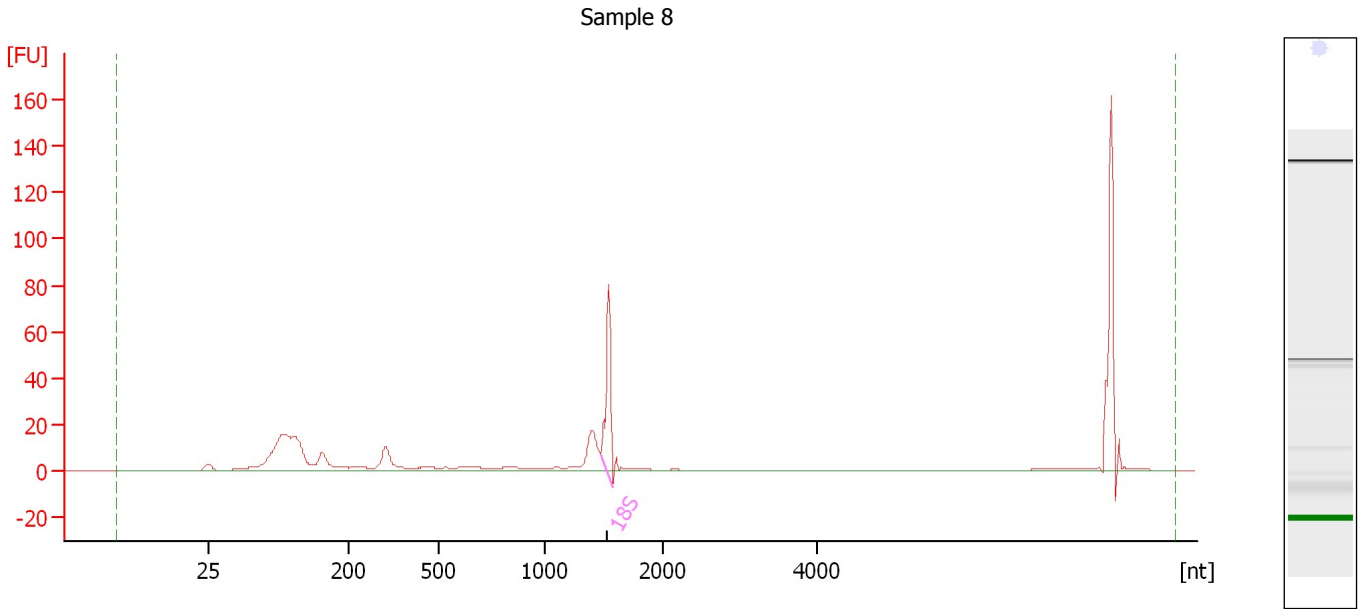
Fragment table for sample 7 : Sample 7

Name	Start Size [nt]	End Size [nt]	Area	% of total Area
18S	1,325	1,719	26.1	28.5
28S	2,589	3,291	7.1	7.8

Assay Class: Eukaryote Total RNA Nano
Data Path: C:\...ents and Settings\Bioanalyzer\2013-02-13\2013-02-13_005.xad

Created: 2/13/2013 3:08:41 PM
Modified: 2/13/2013 3:54:26 PM

Electropherogram Summary Continued ...



Overall Results for sample 8 : Sample 8

RNA Area:	303.2	RNA Integrity Number (RIN):	6.4 (B.02.08, Anomaly Threshold(s) manually adapted)
RNA Concentration:	390 ng/μl	Result Flagging Color:	
rRNA Ratio [28s / 18s]:	0.0	Result Flagging Label:	RIN: 6.40

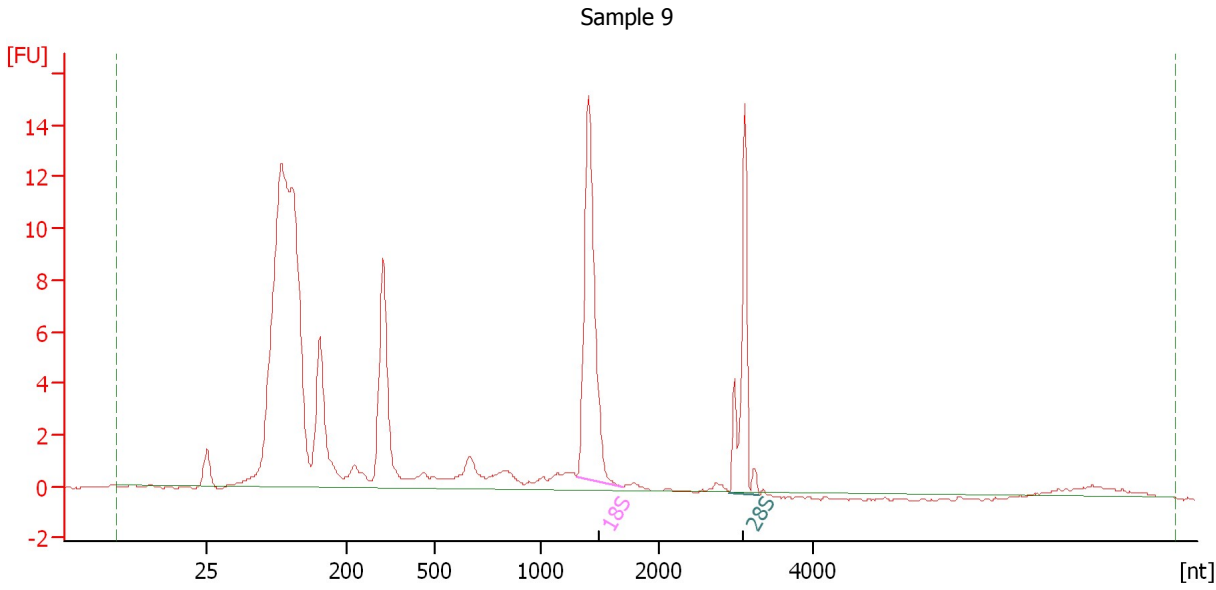
Fragment table for sample 8 : Sample 8

Name	Start Size [nt]	End Size [nt]	Area	% of total Area
18S	1,462	1,580	51.1	16.9

Assay Class: Eukaryote Total RNA Nano
 Data Path: C:\...ents and Settings\Bioanalyzer\2013-02-13\2013-02-13_005.xad

Created: 2/13/2013 3:08:41 PM
 Modified: 2/13/2013 3:54:26 PM

Electropherogram Summary Continued ...



Overall Results for sample 9 : Sample 9

RNA Area:	138.1	RNA Integrity Number (RIN):	7.2 (B.02.08, Anomaly Threshold(s) manually adapted)
RNA Concentration:	178 ng/μl	Result Flagging Color:	
rRNA Ratio [28s / 18s]:	0.5	Result Flagging Label:	RIN: 7.20

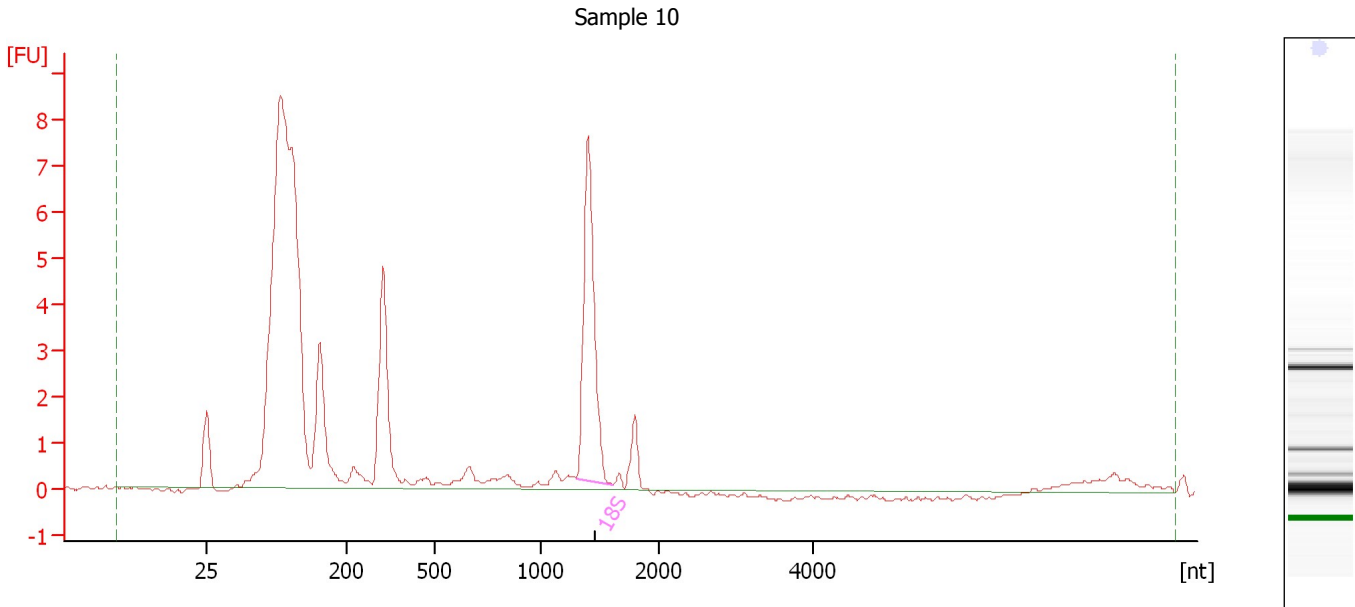
Fragment table for sample 9 : Sample 9

Name	Start Size [nt]	End Size [nt]	Area	% of total Area
18S	1,295	1,685	19.9	14.4
28S	2,908	3,298	10.8	7.8

Assay Class: Eukaryote Total RNA Nano
 Data Path: C:\...ents and Settings\Bioanalyzer\2013-02-13\2013-02-13_005.xad

Created: 2/13/2013 3:08:41 PM
 Modified: 2/13/2013 3:54:26 PM

Electropherogram Summary Continued ...



Overall Results for sample 10 : Sample 10

RNA Area:	73.3	RNA Integrity Number (RIN):	6.2 (B.02.08, Anomaly Threshold(s) manually adapted)
RNA Concentration:	94 ng/μl	Result Flagging Color:	
rRNA Ratio [28s / 18s]:	0.0	Result Flagging Label:	RIN: 6.20

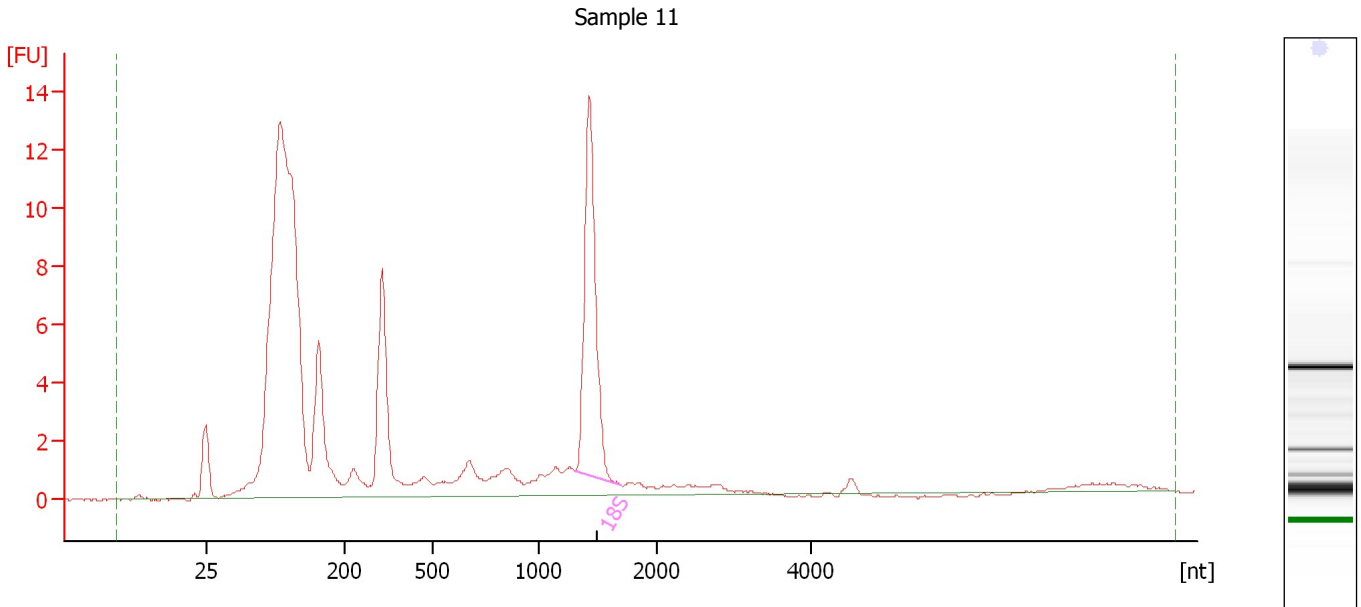
Fragment table for sample 10 : Sample 10

Name	Start Size [nt]	End Size [nt]	Area	% of total Area
18S	1,295	1,612	10.1	13.8

Assay Class: Eukaryote Total RNA Nano
Data Path: C:\...ents and Settings\Bioanalyzer\2013-02-13\2013-02-13_005.xad

Created: 2/13/2013 3:08:41 PM
Modified: 2/13/2013 3:54:26 PM

Electropherogram Summary Continued ...



Overall Results for sample 11 : Sample 11

RNA Area:	132.0	RNA Integrity Number (RIN):	6.3 (B.02.08, Anomaly Threshold(s) manually adapted)
RNA Concentration:	170 ng/μl	Result Flagging Color:	
rRNA Ratio [28s / 18s]:	0.0	Result Flagging Label:	RIN: 6.30

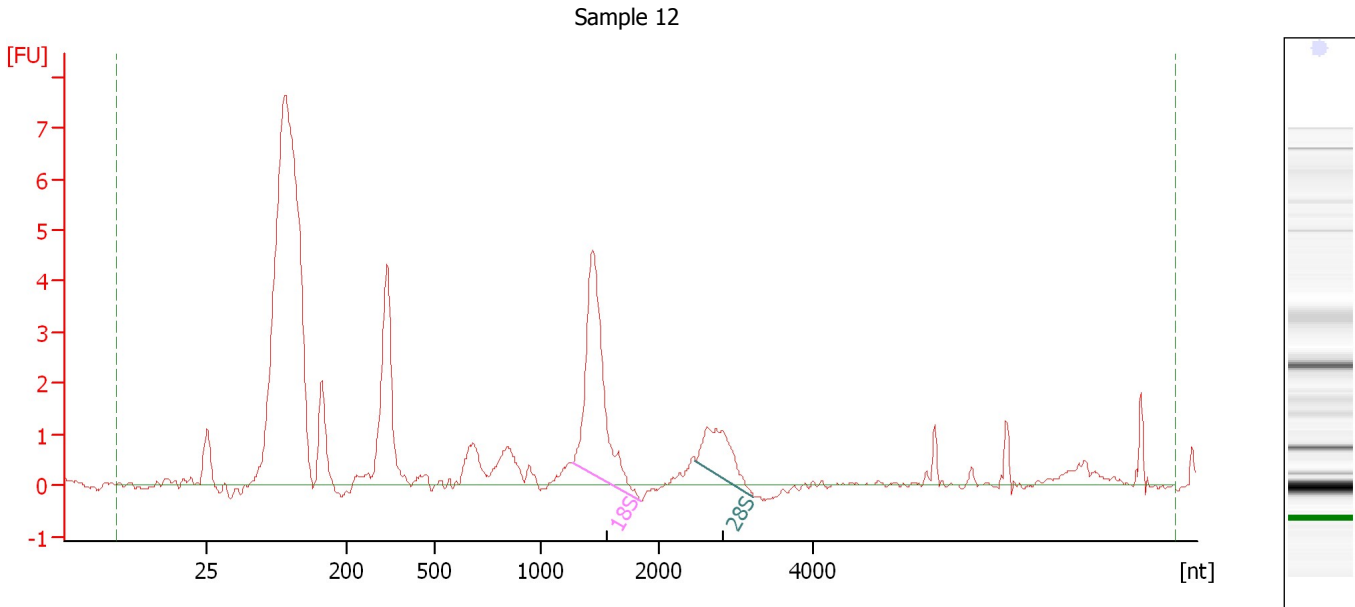
Fragment table for sample 11 : Sample 11

Name	Start Size [nt]	End Size [nt]	Area	% of total Area
18S	1,293	1,692	18.7	14.2

Assay Class: Eukaryote Total RNA Nano
Data Path: C:\...ents and Settings\Bioanalyzer\2013-02-13\2013-02-13_005.xad

Created: 2/13/2013 3:08:41 PM
Modified: 2/13/2013 3:54:26 PM

Electropherogram Summary Continued ...



Overall Results for sample 12 : Sample 12

RNA Area: 70.3 RNA Integrity Number (RIN): 2.7 (B.02.08, Anomaly Threshold(s) manually adapted)
RNA Concentration: 90 ng/μl
rRNA Ratio [28s / 18s]: 0.3
Result Flagging Color:
Result Flagging Label: RIN: 2.70

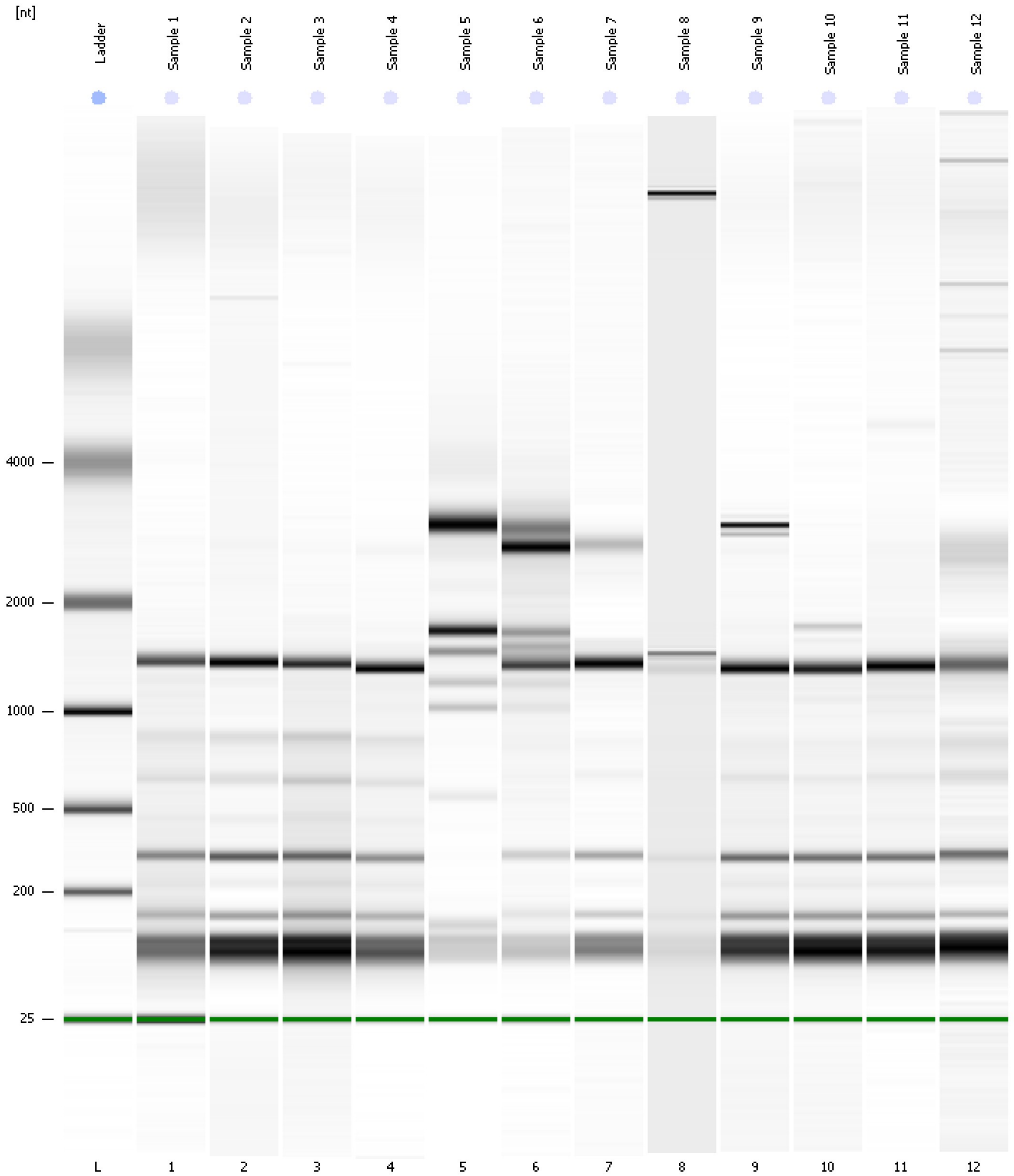
Fragment table for sample 12 : Sample 12

Name	Start Size [nt]	End Size [nt]	Area	% of total Area
18S	1,259	1,838	10.0	14.2
28S	2,462	3,228	3.0	4.2

Assay Class: Eukaryote Total RNA Nano
Data Path: C:\...ents and Settings\Bioanalyzer\2013-02-13\2013-02-13_005.xad

Created: 2/13/2013 3:08:41 PM
Modified: 2/13/2013 3:54:26 PM

Gel Image



Assay Class: Eukaryote Total RNA Nano
 Data Path: C:\...ents and Settings\Bioanalyzer\2013-02-13\2013-02-13_005.xad

Created: 2/13/2013 3:08:41 PM
 Modified: 2/13/2013 3:54:26 PM

Run Logbook

Description	Number	Source	Category	Sub Category	Time	Time Zone	User	Host
Run ended on port 1 (Number of wells acquired: 13)		Instrument	Run		2/13/2013 3:32:29 PM	(GMT --08:00) Pacific Standard Time	UC Davis	D8XSMGH1
Run started on port 1 (File: C:\Documents and Settings\Bioanalyzer\2013-02-13\2013-02-13_005.xad)		Instrument	Run		2/13/2013 3:08:46 PM	(GMT --08:00) Pacific Standard Time	UC Davis	D8XSMGH1
Product Number : G2938B		Instrument	Run		2/13/2013 3:08:46 PM	(GMT --08:00) Pacific Standard Time	UC Davis	D8XSMGH1
Name :		Instrument	Run		2/13/2013 3:08:46 PM	(GMT --08:00) Pacific Standard Time	UC Davis	D8XSMGH1
Vendor : Agilent Technologies		Instrument	Run		2/13/2013 3:08:46 PM	(GMT --08:00) Pacific Standard Time	UC Davis	D8XSMGH1
Serial# : DE13701086		Instrument	Run		2/13/2013 3:08:46 PM	(GMT --08:00) Pacific Standard Time	UC Davis	D8XSMGH1
Firmware : C.01.069		Instrument	Run		2/13/2013 3:08:46 PM	(GMT --08:00) Pacific Standard Time	UC Davis	D8XSMGH1
Cartridge : Electrode		Instrument	Run		2/13/2013 3:08:46 PM	(GMT --08:00) Pacific Standard Time	UC Davis	D8XSMGH1