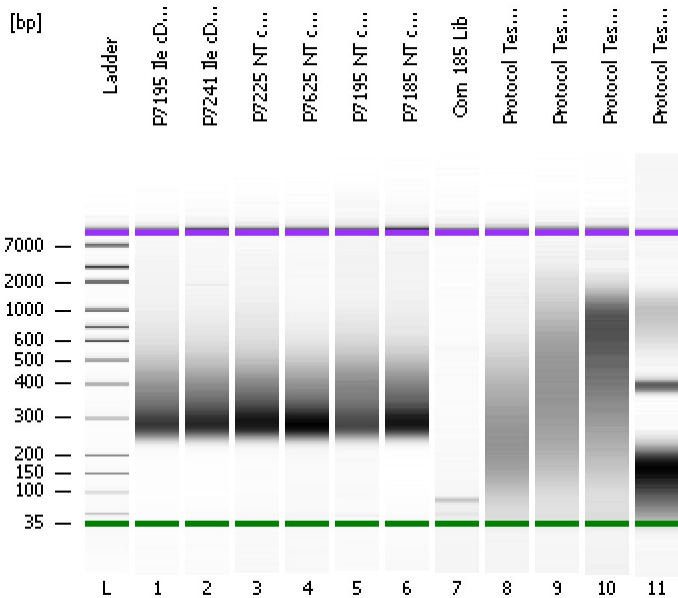


Assay Class: High Sensitivity DNA Assay
Data Path: C:\...ents and Settings\Bioanalyzer\2013-02-13\2013-02-13_006.xad

Created: 2/13/2013 4:25:35 PM
Modified: 2/13/2013 5:11:28 PM

Electrophoresis File Run Summary

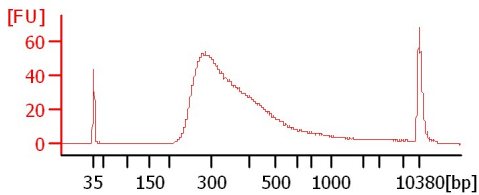


Instrument Information:
 Instrument Name: DE13701086 Firmware: C.01.069
 Serial#: DE13701086 Type: G2938B

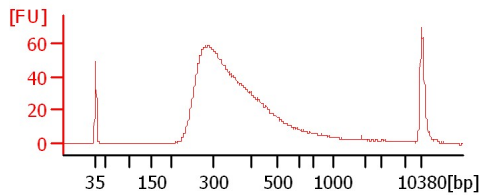
Assay Information:
 Assay Origin Path: C:\Program Files\Agilent\2100 bioanalyzer\2100 expert\assays\dsDNA\High Sensitivity DNA.xsy
 Assay Class: High Sensitivity DNA Assay
 Version: 1.03
 Assay Comments: Copyright © 2003-2010 Agilent Technologies

Chip Information:
 Chip Lot #:
 Reagent Kit Lot #:
 Chip Comments:

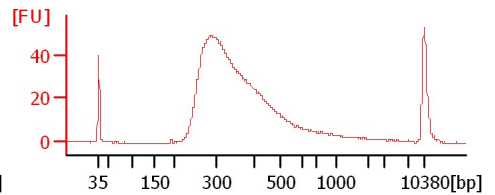
P7195 Ile cDNA Lib 1:12



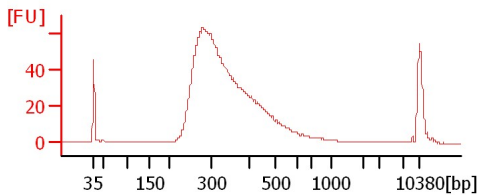
P7241 Ile cDNA Lib 1:11



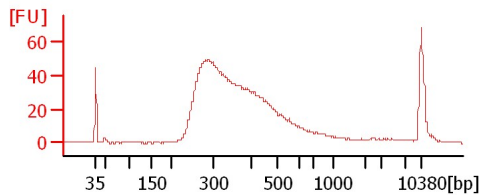
P7225 NT cDNA Lib 1:11



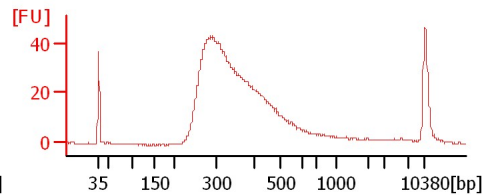
P7625 NT cDNA Lib 1:8



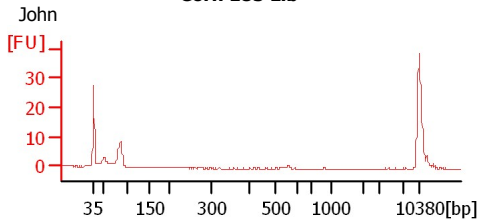
P7195 NT cDNA Lib 1:11



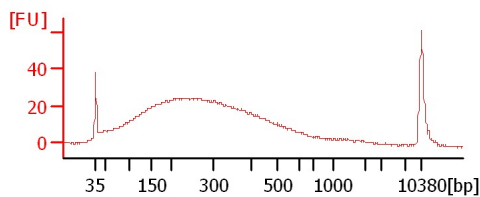
P7185 NT cDNA Lib 1:11



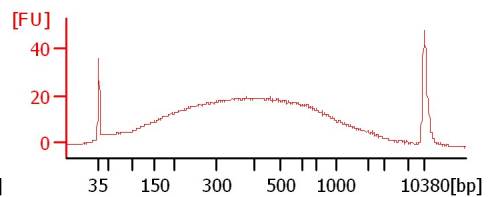
Corn 185 Lib



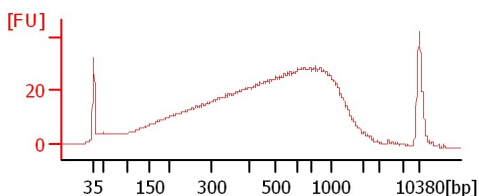
Protocol Test 200bp 50ul 1:4



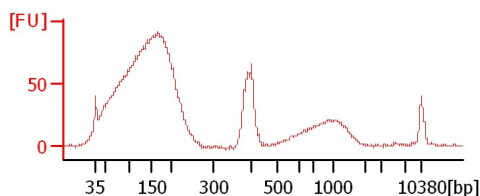
Protocol Test 300bp 50ul 1:4



Protocol Test 400bp 50ul 1:4



Protocol Test 500bp 50ul 1:4



Assay Class: High Sensitivity DNA Assay
Data Path: C:\...ents and Settings\Bioanalyzer\2013-02-13\2013-02-13_006.xad

Created: 2/13/2013 4:25:35 PM
Modified: 2/13/2013 5:11:28 PM

Electrophoresis File Run Summary (Chip Summary)

Sample Name	Sample Comment	Rest. Digest	Status	Observation	Result Label	Result Color
P7195 Ile cDNA Lib 1:12		<input type="checkbox"/>	✓			
P7241 Ile cDNA Lib 1:11		<input type="checkbox"/>	✓			
P7225 NT cDNA Lib 1:11		<input type="checkbox"/>	✓			
P7625 NT cDNA Lib 1:8		<input type="checkbox"/>	✓			
P7195 NT cDNA Lib 1:11		<input type="checkbox"/>	✓			
P7185 NT cDNA Lib 1:11		<input type="checkbox"/>	✓			
Corn 185 Lib	John	<input type="checkbox"/>	✓			
Protocol Test 200bp 50ul 1:4		<input type="checkbox"/>	✓			
Protocol Test 300bp 50ul 1:4		<input type="checkbox"/>	✓			
Protocol Test 400bp 50ul 1:4		<input type="checkbox"/>	✓			
Protocol Test 500bp 50ul 1:4		<input type="checkbox"/>	✓			
Ladder		<input type="checkbox"/>	✓			

Chip Lot #

Reagent Kit Lot #

Chip Comments :

Assay Class: High Sensitivity DNA Assay
Data Path: C:\...ents and Settings\Bioanalyzer\2013-02-13\2013-02-13_006.xad

Created: 2/13/2013 4:25:35 PM
Modified: 2/13/2013 5:11:28 PM

Electrophoresis Assay Details

General Analysis Settings

Number of Available Sample and Ladder Wells (Max.) : 12
Minimum Visible Range [s] : 32
Maximum Visible Range [s] : 138
Start Analysis Time Range [s] : 33
End Analysis Time Range [s] : 137.5
Ladder Concentration [pg/μl] : 1950
Uses Standard Area for Ladder Fragments
Lower Marker Concentration [pg/μl] : 125
Upper Marker Concentration [pg/μl] : 75
Used Upper Marker for Quantitation
Standard Curve Fit is Point to Point
Show Data Aligned to Lower and Upper Marker

Integrator Settings

Integration Start Time [s] : 33.05
Integration End Time [s] : 137
Slope Threshold : 0.8
Height Threshold [FU] : 5
Area Threshold : 0.1
Width Threshold [s] : 0.6
Baseline Plateau [s] : 0.5

Filter Settings

Filter Width [s] : 0.5
Polynomial Order : 4

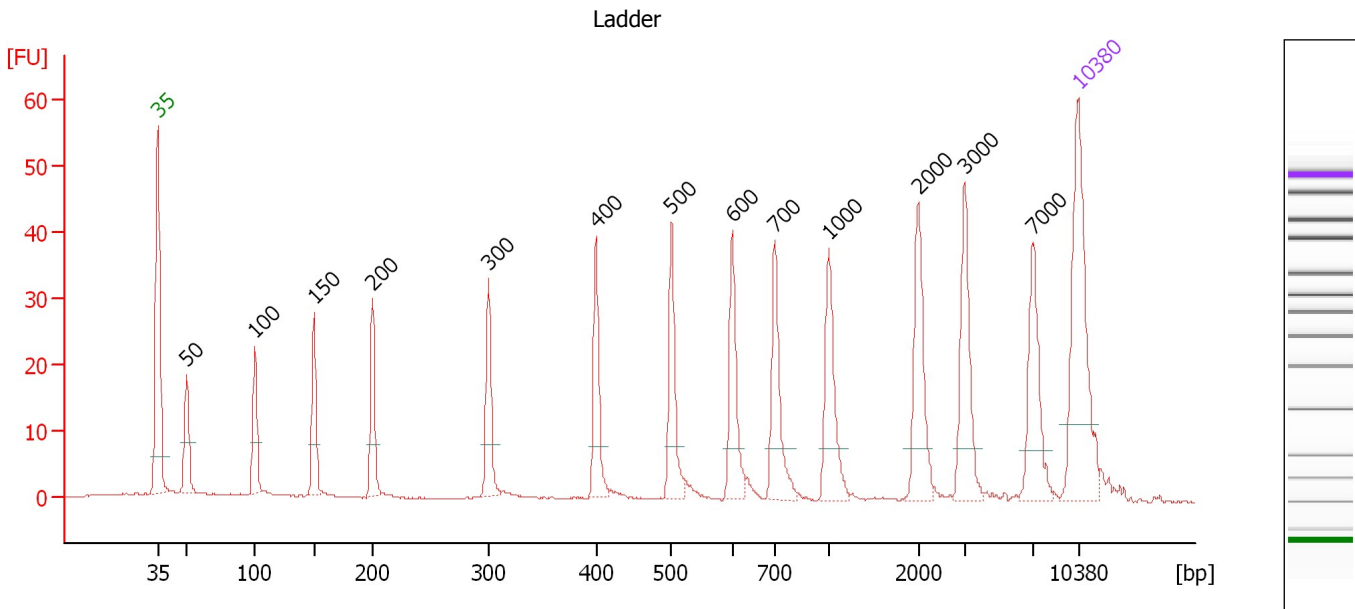
Ladder

Ladder Peak	Size	Area
1	35	160
2	50	210
3	100	208
4	150	221
5	200	242
6	300	270
7	400	305
8	500	306
9	600	336
10	700	321
11	1000	366
12	2000	413
13	3000	411
14	7000	400
15	10380	214

Assay Class: High Sensitivity DNA Assay
 Data Path: C:\...ents and Settings\Bioanalyzer\2013-02-13\2013-02-13_006.xad

Created: 2/13/2013 4:25:35 PM
 Modified: 2/13/2013 5:11:28 PM

Electropherogram Summary



Overall Results for Ladder

Noise: 0.1

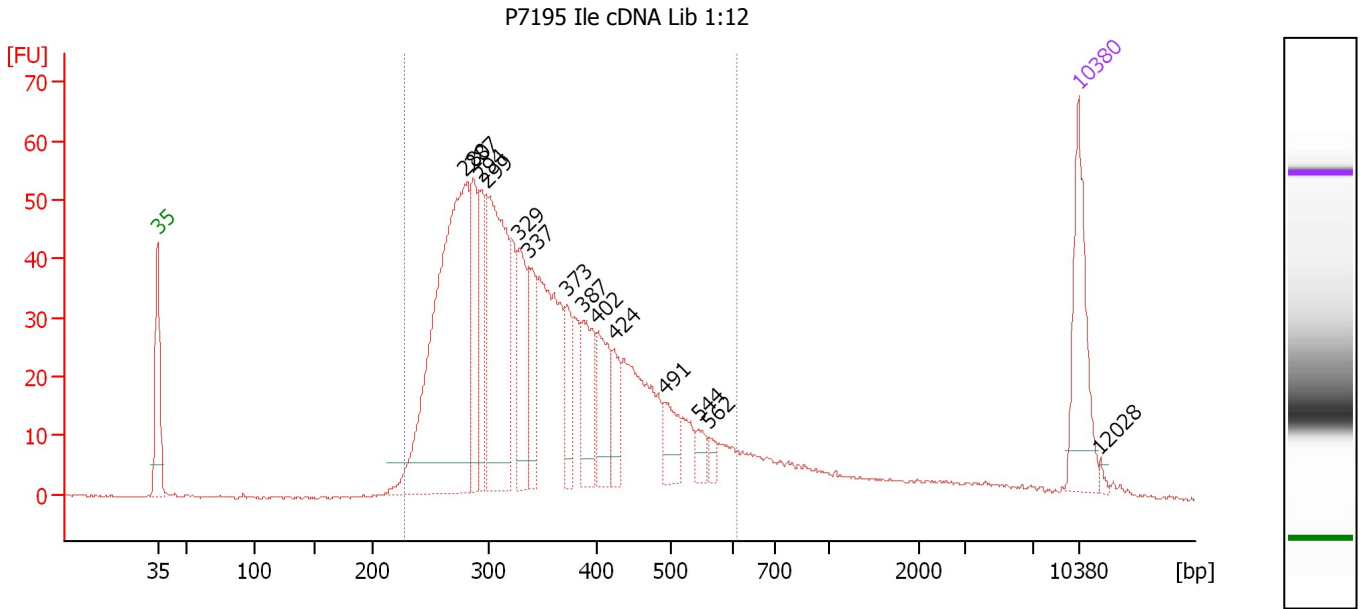
Peak table for Ladder

Peak	Size [bp]	Conc. [pg/μl]	Molarity [pmol/l]	Observations
1	35	125.00	5,411.3	Lower Marker
2	50	150.00	4,545.5	Ladder Peak
3	100	150.00	2,272.7	Ladder Peak
4	150	150.00	1,515.2	Ladder Peak
5	200	150.00	1,136.4	Ladder Peak
6	300	150.00	757.6	Ladder Peak
7	400	150.00	568.2	Ladder Peak
8	500	150.00	454.5	Ladder Peak
9	600	150.00	378.8	Ladder Peak
10	700	150.00	324.7	Ladder Peak
11	1,000	150.00	227.3	Ladder Peak
12	2,000	150.00	113.6	Ladder Peak
13	3,000	150.00	75.8	Ladder Peak
14	7,000	150.00	32.5	Ladder Peak
15	10,380	75.00	10.9	Upper Marker

Assay Class: High Sensitivity DNA Assay
 Data Path: C:\...ents and Settings\Bioanalyzer\2013-02-13\2013-02-13_006.xad

Created: 2/13/2013 4:25:35 PM
 Modified: 2/13/2013 5:11:28 PM

Electropherogram Summary Continued ...



Overall Results for sample 1 : P7195 Ile cDNA Lib 1:12

Number of peaks found: 14 Corr. Area 1: 1,034.8
 Noise: 0.1

Peak table for sample 1 : P7195 Ile cDNA Lib 1:12

Peak	Size [bp]	Conc. [pg/μl]	Molarity [pmol/l]	Observations
1	35	125.00	5,411.3	Lower Marker
2	280	465.55	2,515.9	
3	287	90.61	478.7	
4	294	80.73	416.4	
5	299	232.14	1,177.5	
6	329	83.84	386.2	
7	337	61.05	274.1	
8	373	42.62	173.1	
9	387	69.28	270.9	
10	402	61.06	230.2	
11	424	37.30	133.3	
12	491	34.19	105.4	
13	544	13.40	37.3	
14	562	7.97	21.5	
15	10,380	75.00	10.9	Upper Marker
16	12,028	0.00	0.0	

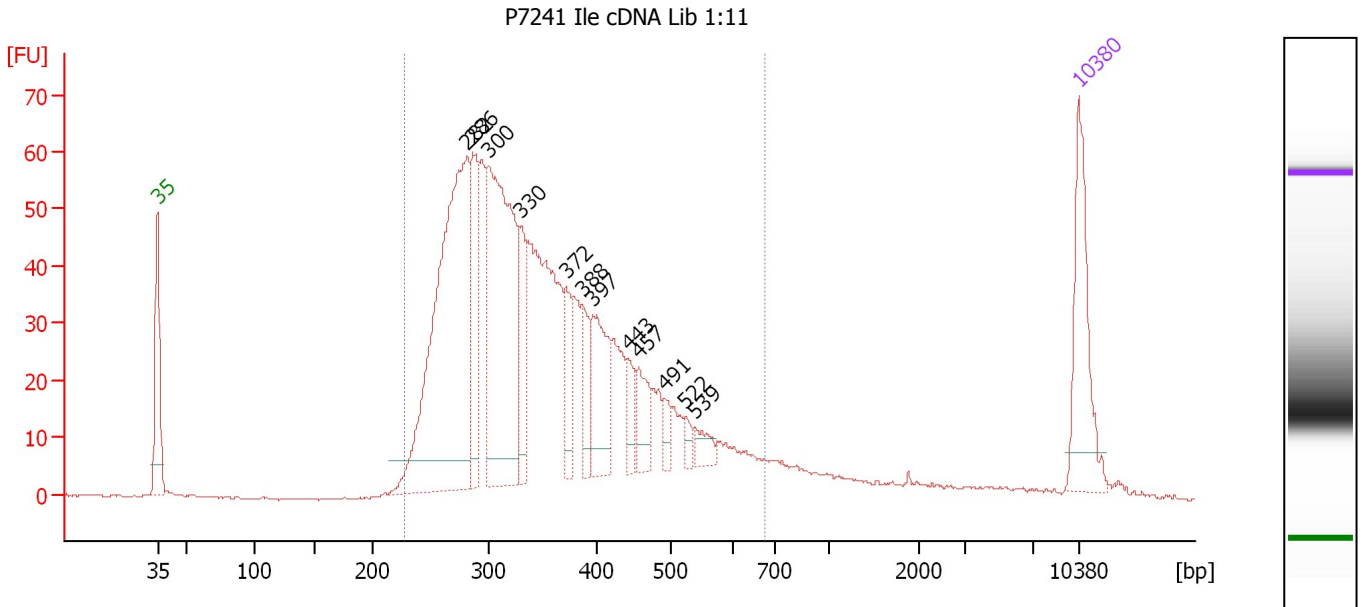
Region table for sample 1 : P7195 Ile cDNA Lib 1:12

From [bp]	To [bp]	Average Size [bp]	Molarity [pmol/l]	Conc. [pg/μl]	Corr. Area	% of Total	Size distribution in CV [%]	Color
228	611	354	8,252.4	1,792.77	1,034.8	91	23.8	Blue

Assay Class: High Sensitivity DNA Assay
 Data Path: C:\...ents and Settings\Bioanalyzer\2013-02-13\2013-02-13_006.xad

Created: 2/13/2013 4:25:35 PM
 Modified: 2/13/2013 5:11:28 PM

Electropherogram Summary Continued ...



Overall Results for sample 2 : P7241 Ile cDNA Lib 1:11

Number of peaks found: 12 Corr. Area 1: 1,161.4
 Noise: 0.2

Peak table for sample 2 : P7241 Ile cDNA Lib 1:11

Peak	Size [bp]	Conc. [pg/μl]	Molarity [pmol/l]	Observations
1	35	125.00	5,411.3	Lower Marker
2	282	439.52	2,365.1	
3	286	98.82	523.3	
4	300	309.57	1,561.8	
5	330	62.75	287.9	
6	372	42.52	173.1	
7	388	36.03	140.8	
8	397	79.96	305.1	
9	443	22.52	77.0	
10	457	35.76	118.5	
11	491	14.42	44.5	
12	522	8.25	23.9	
13	539	15.58	43.8	
14	10,380	75.00	10.9	Upper Marker

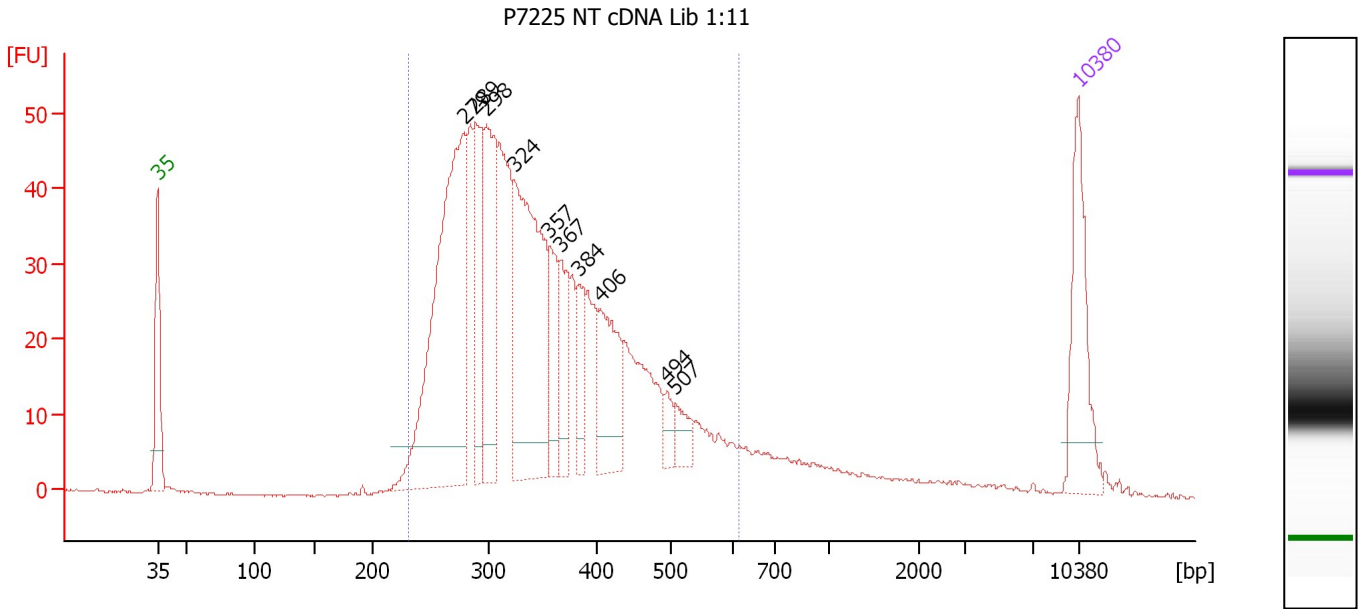
Region table for sample 2 : P7241 Ile cDNA Lib 1:11

From [bp]	To [bp]	Average Size [bp]	Molarity [pmol/l]	Conc. [pg/μl]	Corr. Area	% of Total	Size distribution in CV [%]	Color
227	675	358	8,286.9	1,812.12	1,161.4	94	25.4	Blue

Assay Class: High Sensitivity DNA Assay
 Data Path: C:\...ents and Settings\Bioanalyzer\2013-02-13\2013-02-13_006.xad

Created: 2/13/2013 4:25:35 PM
 Modified: 2/13/2013 5:11:28 PM

Electropherogram Summary Continued ...



Overall Results for sample 3 : P7225 NT cDNA Lib 1:11

Number of peaks found: 10 Corr. Area 1: 939.5
 Noise: 0.2

Peak table for sample 3 : P7225 NT cDNA Lib 1:11

Peak	Size [bp]	Conc. [pg/μl]	Molarity [pmol/l]	Observations
1	35	125.00	5,411.3	Lower Marker
2	279	399.61	2,168.6	
3	289	100.69	527.9	
4	298	153.95	782.1	
5	324	268.86	1,256.7	
6	357	57.28	243.2	
7	367	58.31	240.5	
8	384	42.13	166.0	
9	406	90.14	336.8	
10	494	16.11	49.4	
11	507	21.25	63.5	
12	10,380	75.00	10.9	Upper Marker

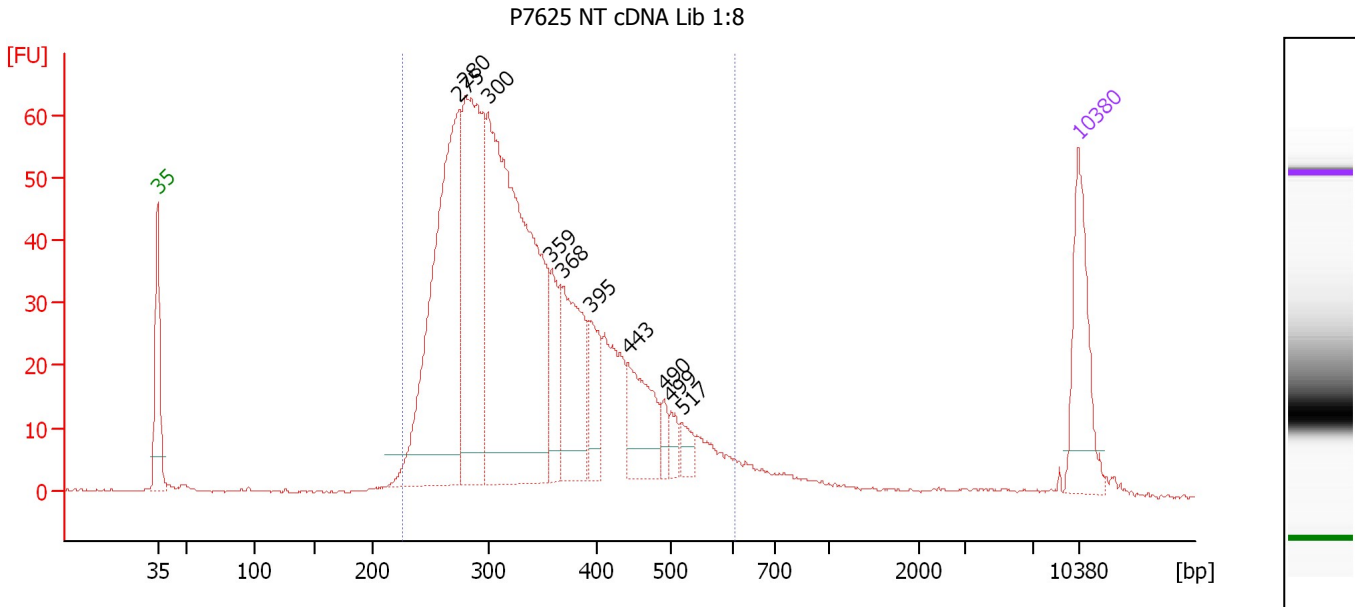
Region table for sample 3 : P7225 NT cDNA Lib 1:11

From [bp]	To [bp]	Average Size [bp]	Molarity [pmol/l]	Conc. [pg/μl]	Corr. Area	% of Total	Size distribution in CV [%]	Color
230	616	353	8,312.4	1,808.21	939.5	91	23.4	Blue

Assay Class: High Sensitivity DNA Assay
 Data Path: C:\...ents and Settings\Bioanalyzer\2013-02-13\2013-02-13_006.xad

Created: 2/13/2013 4:25:35 PM
 Modified: 2/13/2013 5:11:28 PM

Electropherogram Summary Continued ...



Overall Results for sample 4 : P7625 NT cDNA Lib 1:8

Number of peaks found: 10 Corr. Area 1: 1,101.2
 Noise: 0.1

Peak table for sample 4 : P7625 NT cDNA Lib 1:8

Peak	Size [bp]	Conc. [pg/μl]	Molarity [pmol/l]	Observations
1	35	125.00	5,411.3	Lower Marker
2	275	429.58	2,365.4	
3	280	318.51	1,724.1	
4	300	615.15	3,107.7	
5	359	61.40	259.3	
6	368	132.58	545.2	
7	395	49.92	191.5	
8	443	81.09	277.4	
9	490	15.21	47.0	
10	499	15.53	47.1	
11	517	17.64	51.7	
12	10,380	75.00	10.9	Upper Marker

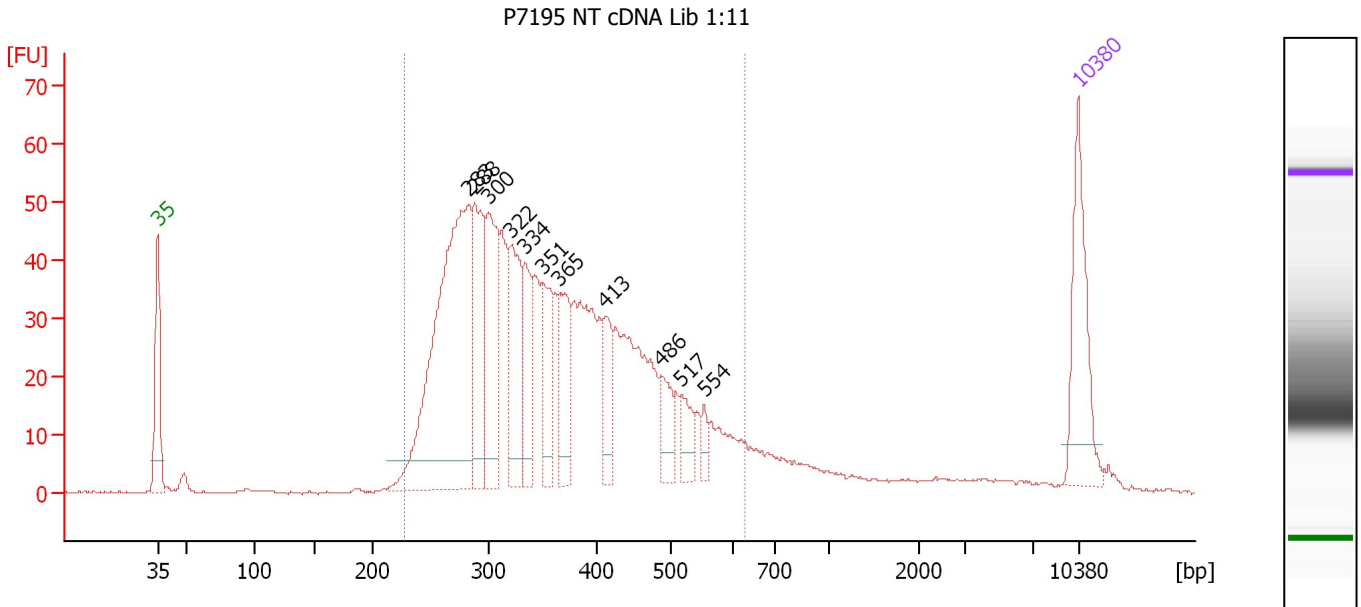
Region table for sample 4 : P7625 NT cDNA Lib 1:8

From [bp]	To [bp]	Average Size [bp]	Molarity [pmol/l]	Conc. [pg/μl]	Corr. Area	% of Total	Size distribution in CV [%]	Color
227	606	344	9,221.1	1,959.60	1,101.2	94	23.1	Blue

Assay Class: High Sensitivity DNA Assay
 Data Path: C:\...ents and Settings\Bioanalyzer\2013-02-13\2013-02-13_006.xad

Created: 2/13/2013 4:25:35 PM
 Modified: 2/13/2013 5:11:28 PM

Electropherogram Summary Continued ...



Overall Results for sample 5 : P7195 NT cDNA Lib 1:11

Number of peaks found: 11 Corr. Area 1: 1,051.6
 Noise: 0.2

Peak table for sample 5 : P7195 NT cDNA Lib 1:11

Peak	Size [bp]	Conc. [pg/μl]	Molarity [pmol/l]	Observations
1	35	125.00	5,411.3	Lower Marker
2	283	412.67	2,207.1	
3	288	119.33	627.6	
4	300	127.99	646.7	
5	322	101.47	477.9	
6	334	58.53	265.2	
7	351	65.64	283.4	
8	365	74.19	307.7	
9	413	42.59	156.3	
10	486	36.33	113.2	
11	517	26.68	78.3	
12	554	12.26	33.5	
13	10,380	75.00	10.9	Upper Marker

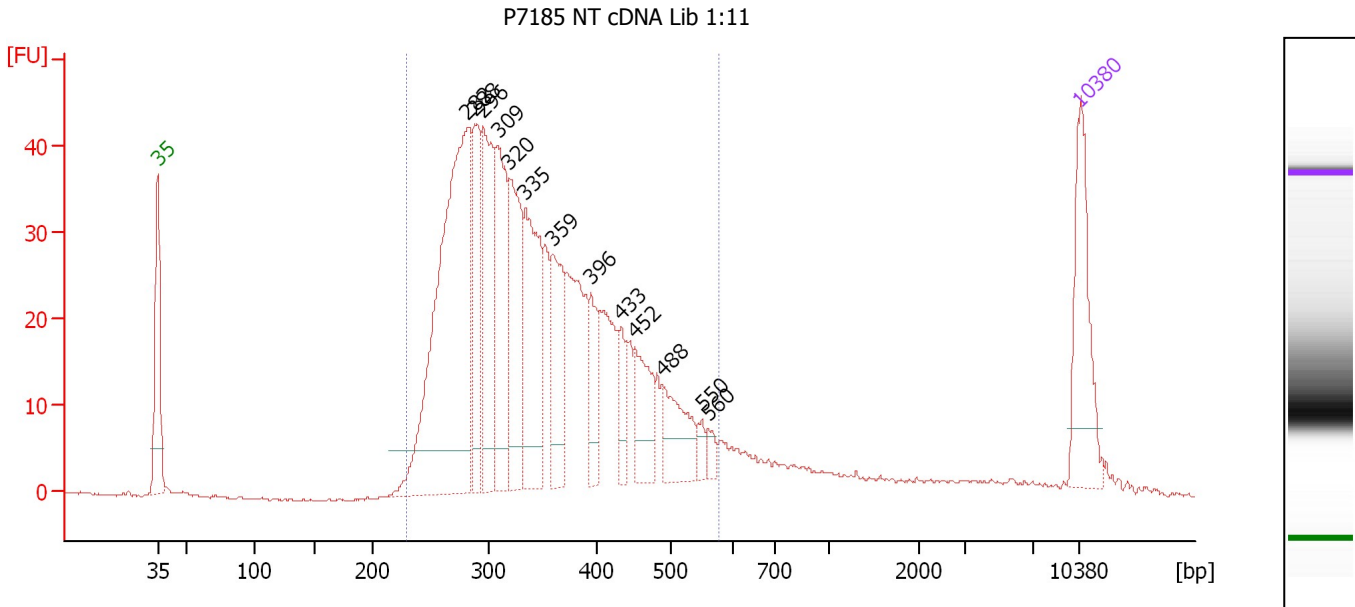
Region table for sample 5 : P7195 NT cDNA Lib 1:11

From [bp]	To [bp]	Average Size [bp]	Molarity [pmol/l]	Conc. [pg/μl]	Corr. Area	% of Total	Size distribution in CV [%]	Color
227	630	365	7,746.0	1,723.21	1,051.6	89	24.7	Blue

Assay Class: High Sensitivity DNA Assay
 Data Path: C:\...ents and Settings\Bioanalyzer\2013-02-13\2013-02-13_006.xad

Created: 2/13/2013 4:25:35 PM
 Modified: 2/13/2013 5:11:28 PM

Electropherogram Summary Continued ...



Overall Results for sample 6 : P7185 NT cDNA Lib 1:11

Number of peaks found: 13 Corr. Area 1: 787.0
 Noise: 0.2

Peak table for sample 6 : P7185 NT cDNA Lib 1:11

Peak	Size [bp]	Conc. [pg/μl]	Molarity [pmol/l]	Observations
1	35	125.00	5,411.3	Lower Marker
2	282	443.85	2,384.4	
3	288	100.47	527.7	
4	296	135.67	694.6	
5	309	129.67	636.2	
6	320	123.77	586.5	
7	335	150.87	683.0	
8	359	89.42	377.0	
9	396	49.97	191.4	
10	433	28.69	100.4	
11	452	56.99	191.2	
12	488	58.17	180.4	
13	550	10.55	29.0	
14	560	9.80	26.5	
15	10,380	75.00	10.9	Upper Marker

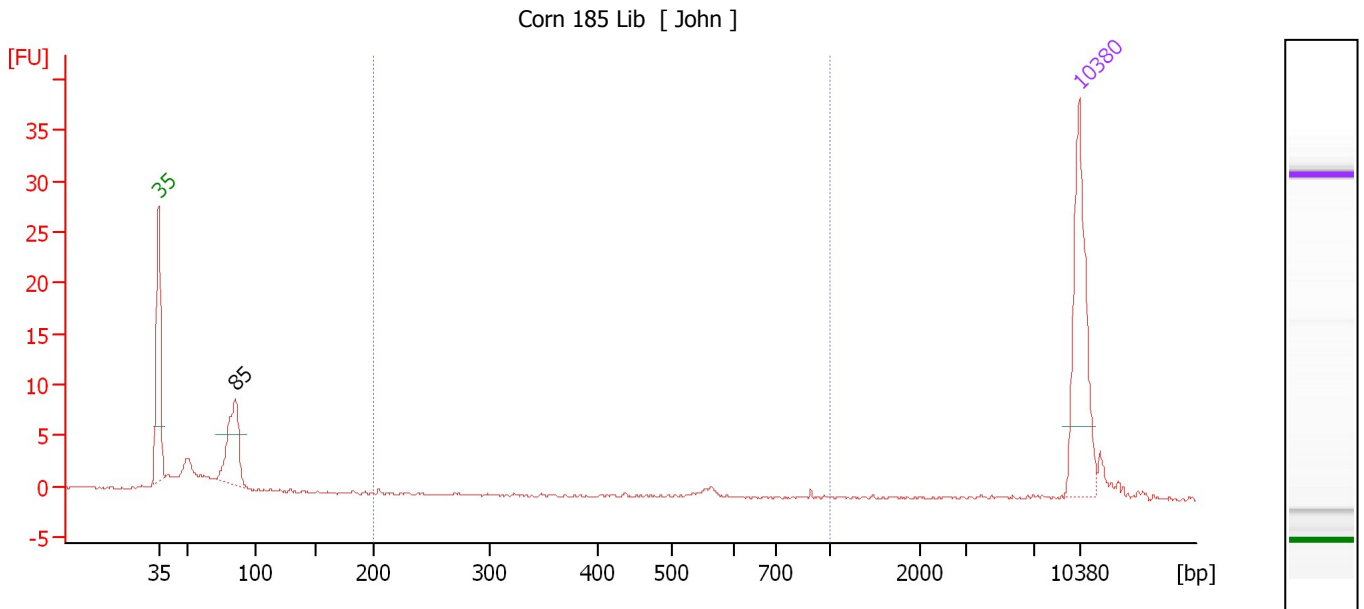
Region table for sample 6 : P7185 NT cDNA Lib 1:11

From [bp]	To [bp]	Average Size [bp]	Molarity [pmol/l]	Conc. [pg/μl]	Corr. Area	% of Total	Size distribution in CV [%]	Color
229	577	351	8,106.2	1,762.82	787.0	90	22.0	Blue

Assay Class: High Sensitivity DNA Assay
 Data Path: C:\...ents and Settings\Bioanalyzer\2013-02-13\2013-02-13_006.xad

Created: 2/13/2013 4:25:35 PM
 Modified: 2/13/2013 5:11:28 PM

Electropherogram Summary Continued ...



Overall Results for sample 7 : Corn 185 Lib

Number of peaks found: 1 Corr. Area 1: 1.0
 Noise: 0.1

Peak table for sample 7 : Corn 185 Lib

Peak	Size [bp]	Conc. [pg/μl]	Molarity [pmol/l]	Observations
1	35	125.00	5,411.3	Lower Marker
2	85	71.72	1,278.6	
3	10,380	75.00	10.9	Upper Marker

Region table for sample 7 : Corn 185 Lib

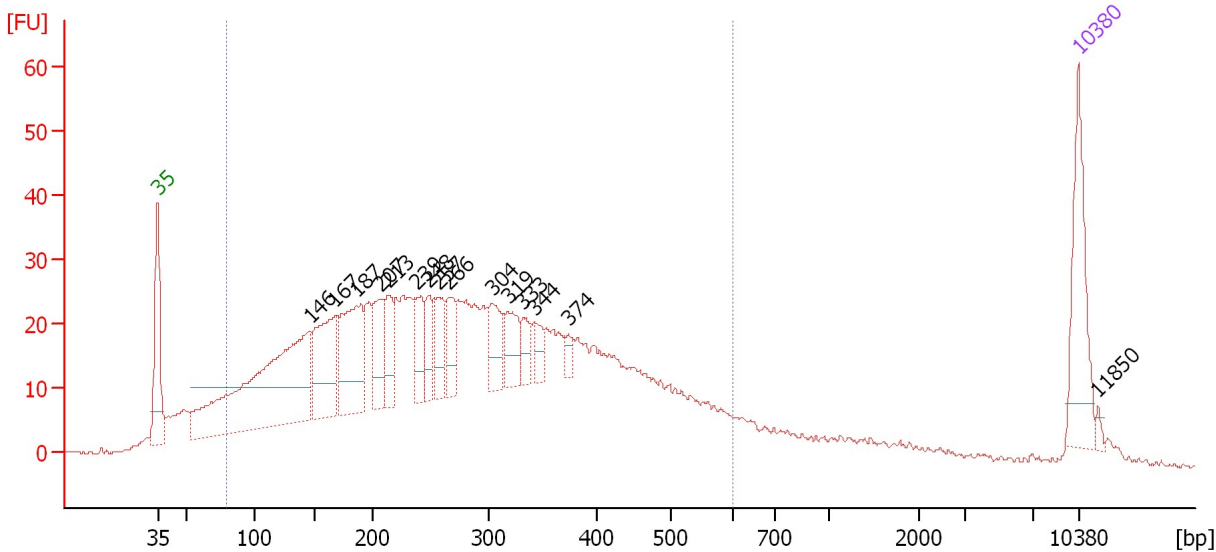
From [bp]	To [bp]	Average Size [bp]	Molarity [pmol/l]	Conc. [pg/μl]	Corr. Area	% of Total	Size distribution in CV [%]	Color
200	1,000	591	7.4	2.64	1.0	2	21.5	Blue

Assay Class: High Sensitivity DNA Assay
 Data Path: C:\...ents and Settings\Bioanalyzer\2013-02-13\2013-02-13_006.xad

Created: 2/13/2013 4:25:35 PM
 Modified: 2/13/2013 5:11:28 PM

Electropherogram Summary Continued ...

Protocol Test 200bp 50ul 1:4



Overall Results for sample 8 : Protocol Test 200bp 50ul 1:4

Number of peaks found: 15 Corr. Area 1: 1,095.7
 Noise: 0.2

Peak table for sample 8 : Protocol Test 200bp 50ul 1:4

Peak	Size [bp]	Conc. [pg/μl]	Molarity [pmol/l]	Observations
1	35	125.00	5,411.3	Lower Marker
2	146	370.70	3,843.3	
3	167	130.33	1,182.5	
4	187	126.89	1,029.0	
5	207	57.68	421.6	
6	213	44.53	316.3	
7	239	42.43	269.3	
8	248	35.70	217.7	
9	257	44.41	261.7	
10	266	37.57	213.7	
11	304	45.78	228.2	
12	319	41.96	199.6	
13	333	20.98	95.6	
14	344	19.28	85.0	
15	374	10.50	42.5	
16	10,380	75.00	10.9	Upper Marker
17	11,850	0.00	0.0	

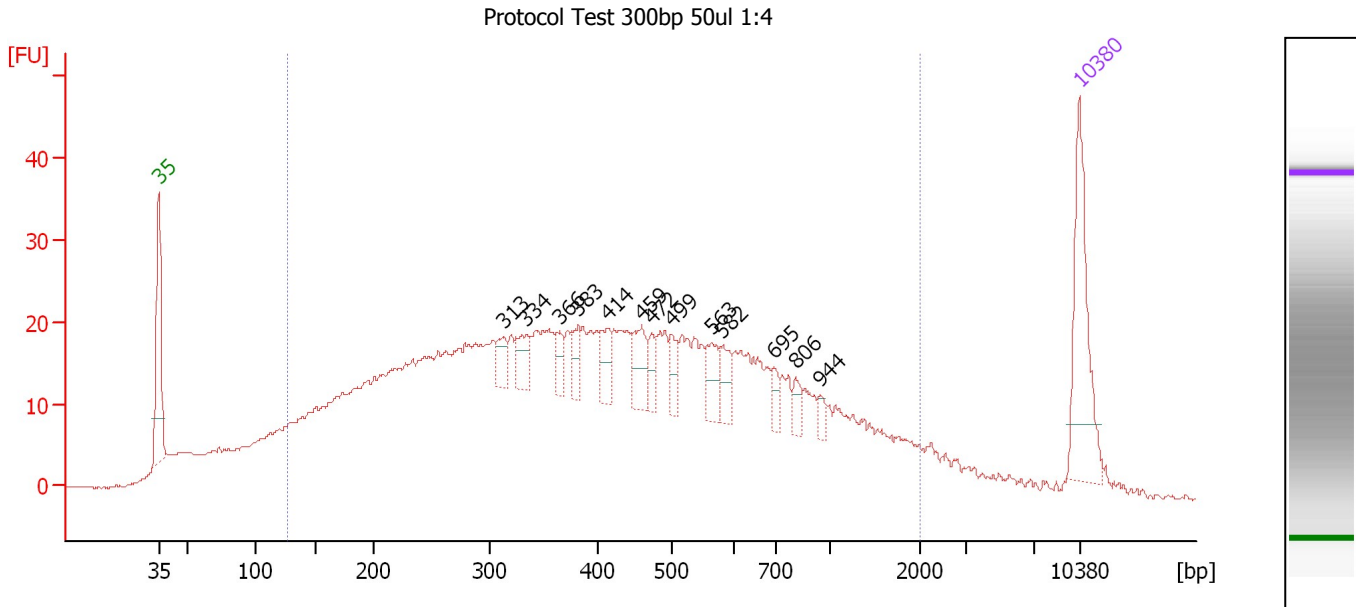
Region table for sample 8 : Protocol Test 200bp 50ul 1:4

From [bp]	To [bp]	Average Size [bp]	Molarity [pmol/l]	Conc. [pg/μl]	Corr. Area	% of Total	Size distribution in CV [%]	Color
79	600	285	18,054.2	2,460.01	1,095.7	87	42.4	Blue

Assay Class: High Sensitivity DNA Assay
 Data Path: C:\...ents and Settings\Bioanalyzer\2013-02-13\2013-02-13_006.xad

Created: 2/13/2013 4:25:35 PM
 Modified: 2/13/2013 5:11:28 PM

Electropherogram Summary Continued ...



Overall Results for sample 9 : Protocol Test 300bp 50ul 1:4

Number of peaks found: 13 Corr. Area 1: 990.6
 Noise: 0.1

Peak table for sample 9 : Protocol Test 300bp 50ul 1:4

Peak	Size [bp]	Conc. [pg/μl]	Molarity [pmol/l]	Observations
1	35	125.00	5,411.3	Lower Marker
2	313	18.01	87.3	
3	334	24.73	112.1	
4	366	16.43	68.0	
5	383	16.23	64.3	
6	414	22.72	83.1	
7	459	31.83	105.0	
8	472	15.99	51.4	
9	499	17.43	52.9	
10	563	24.19	65.1	
11	582	17.81	46.4	
12	695	10.98	23.9	
13	806	10.14	19.1	
14	944	7.40	11.9	
15	10,380	75.00	10.9	Upper Marker

Region table for sample 9 : Protocol Test 300bp 50ul 1:4

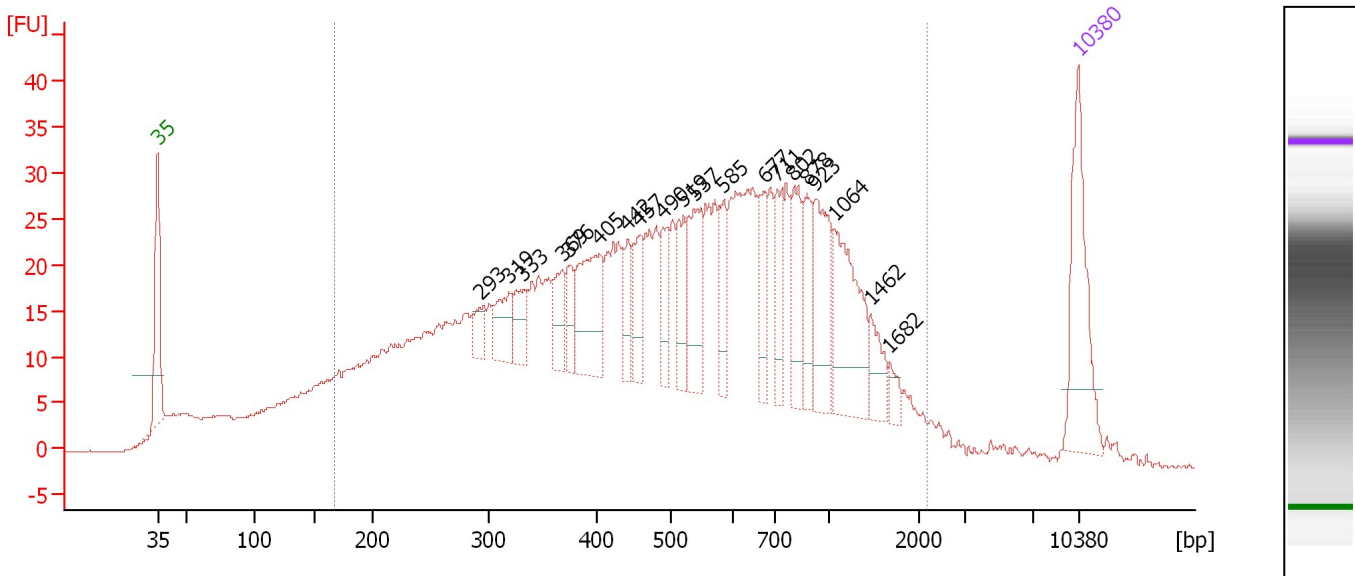
From [bp]	To [bp]	Average Size [bp]	Molarity [pmol/l]	Conc. [pg/μl]	Corr. Area	% of Total	Size distribution in CV [%]	Color
127	2,011	494	11,665.8	2,384.56	990.6	87	68.7	Blue

Assay Class: High Sensitivity DNA Assay
 Data Path: C:\...ents and Settings\Bioanalyzer\2013-02-13\2013-02-13_006.xad

Created: 2/13/2013 4:25:35 PM
 Modified: 2/13/2013 5:11:28 PM

Electropherogram Summary Continued ...

Protocol Test 400bp 50ul 1:4



Overall Results for sample 10 : Protocol Test 400bp 50ul 1:4

Number of peaks found: 20 Corr. Area 1: 1,107.4
 Noise: 0.1

Peak table for sample 10 : Protocol Test 400bp 50ul 1:4

Peak	Size [bp]	Conc. [pg/μl]	Molarity [pmol/l]	Observations
1	35	125.00	5,411.3	Lower Marker
2	293	17.89	92.5	
3	319	34.57	164.3	
4	333	28.71	130.7	
5	369	31.58	129.6	
6	376	22.03	88.8	
7	405	79.12	296.3	
8	442	26.25	90.0	
9	457	33.52	111.1	
10	490	33.75	104.4	
11	519	37.13	108.4	
12	537	55.09	155.5	
13	585	33.27	86.2	
14	677	35.89	80.4	
15	711	33.75	71.9	
16	802	47.25	89.3	
17	878	32.74	56.5	
18	923	65.05	106.7	
19	1,064	85.93	122.4	
20	1,462	22.35	23.2	
21	1,682	9.09	8.2	
22	10,380	75.00	10.9	Upper Marker

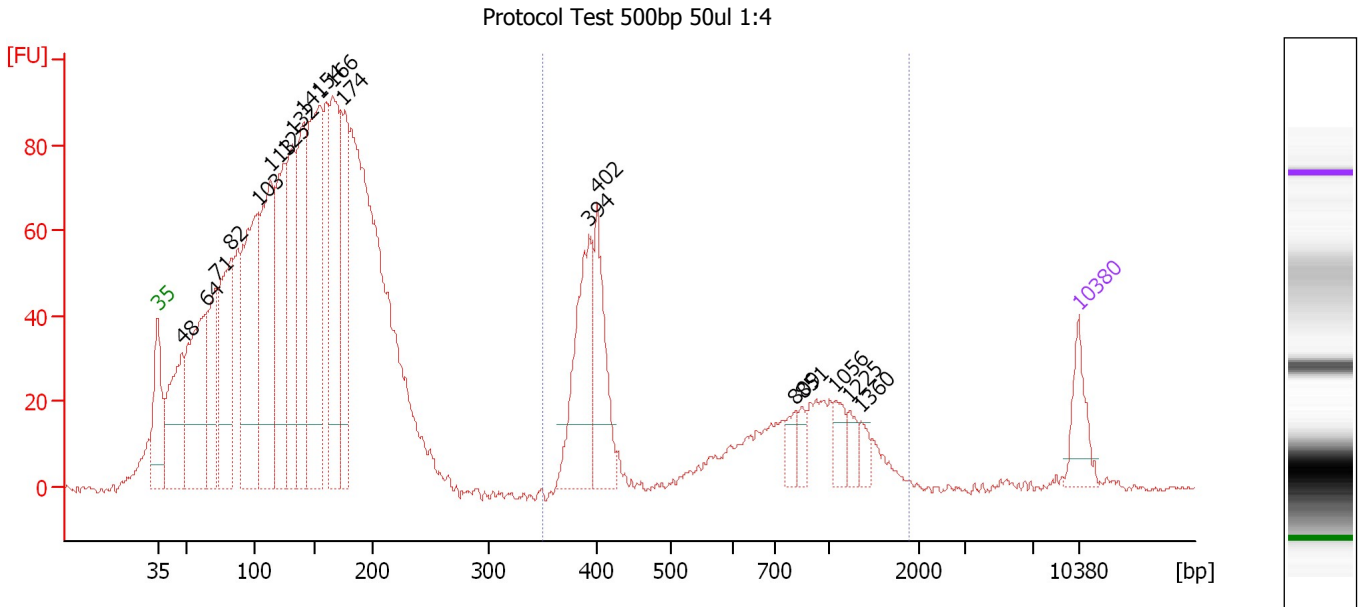
Region table for sample 10 : Protocol Test 400bp 50ul 1:4

From [bp]	To [bp]	Average Size [bp]	Molarity [pmol/l]	Conc. [pg/μl]	Corr. Area	% of Total	Size distribution in CV [%]	Color
168	2,205	602	9,566.4	2,501.67	1,107.4	88	60.8	Blue

Assay Class: High Sensitivity DNA Assay
 Data Path: C:\...ents and Settings\Bioanalyzer\2013-02-13\2013-02-13_006.xad

Created: 2/13/2013 4:25:35 PM
 Modified: 2/13/2013 5:11:28 PM

Electropherogram Summary Continued ...



Setpoint Deviations for sample 11 : Protocol Test 500bp 50ul 1:4

Height Threshold [FU] : 15

Overall Results for sample 11 : Protocol Test 500bp 50ul 1:4

Number of peaks found: 19 Corr. Area 1: 430.5
 Noise: 0.4

Peak table for sample 11 : Protocol Test 500bp 50ul 1:4

Peak	Size [bp]	Conc. [pg/μl]	Molarity [pmol/l]	Observations
1	35	125.00	5,411.3	Lower Marker
2	48	362.69	11,551.3	
3	64	521.17	12,332.2	
4	71	298.16	6,327.1	
5	82	473.63	8,703.4	
6	103	672.06	9,926.6	
7	113	615.46	8,243.6	
8	125	462.46	5,618.5	
9	132	429.13	4,942.2	
10	141	443.12	4,777.9	
11	154	725.84	7,127.2	
12	166	526.08	4,813.8	
13	174	337.30	2,943.1	
14	394	331.08	1,274.3	
15	402	227.68	858.6	
16	809	45.31	84.8	
17	851	29.66	52.8	
18	1,056	48.26	69.3	
19	1,225	33.06	40.9	
20	1,360	27.95	31.1	
21	10,380	75.00	10.9	Upper Marker

Assay Class: High Sensitivity DNA Assay
Data Path: C:\...ents and Settings\Bioanalyzer\2013-02-13\2013-02-13_006.xad

Created: 2/13/2013 4:25:35 PM
Modified: 2/13/2013 5:11:28 PM

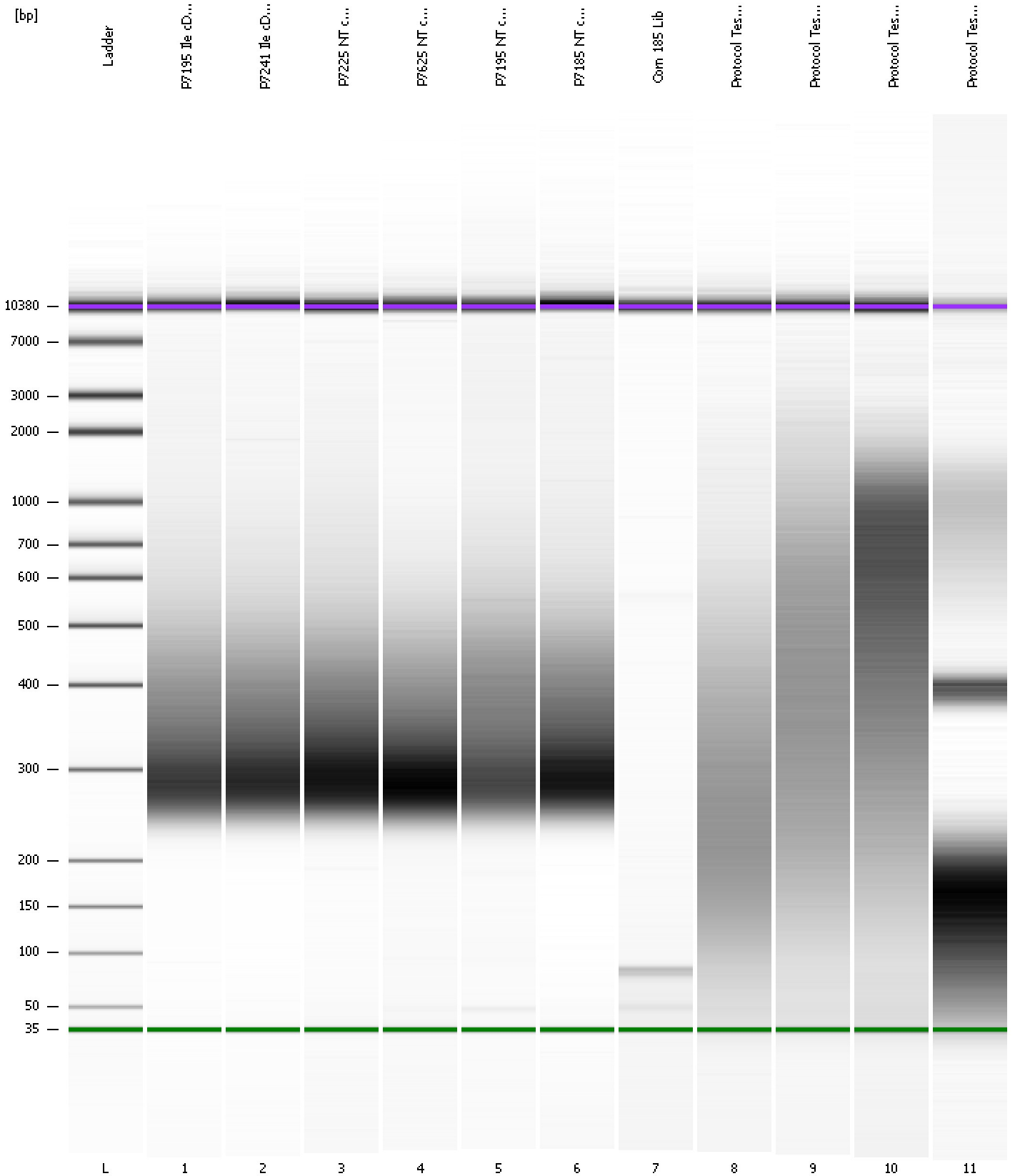
Electropherogram Summary Continued ...**... Region table for sample 11 : Protocol Test 500bp 50ul 1:4**

From [bp]	To [bp]	Average Size [bp]	Molarity [pmol/l]	Conc. [pg/μl]	Corr. Area	% of Total	Size distribution in CV [%]	Co lor
351	1,903	699	3,149.3	1,097.16	430.5	17	50.7	■

Assay Class: High Sensitivity DNA Assay
Data Path: C:\...ents and Settings\Bioanalyzer\2013-02-13\2013-02-13_006.xad

Created: 2/13/2013 4:25:35 PM
Modified: 2/13/2013 5:11:28 PM

Gel Image



Assay Class: High Sensitivity DNA Assay
 Data Path: C:\...ents and Settings\Bioanalyzer\2013-02-13\2013-02-13_006.xad

Created: 2/13/2013 4:25:35 PM
 Modified: 2/13/2013 5:11:28 PM

Run Logbook

Description	Number	Source	Category	Sub Category	Time	Time Zone	User	Host
Run ended on port 1 (Number of wells acquired: 12)		Instrument	Run		2/13/2013 5:06:54 PM	(GMT --08:00) Pacific Standard Time	UC Davis	D8XSMGH1
Run started on port 1 (File: C:\Documents and Settings\Bioanalyzer\2013-02-13\2013-02-13_006.xad)		Instrument	Run		2/13/2013 4:25:40 PM	(GMT --08:00) Pacific Standard Time	UC Davis	D8XSMGH1
Product Number : G2938B		Instrument	Run		2/13/2013 4:25:40 PM	(GMT --08:00) Pacific Standard Time	UC Davis	D8XSMGH1
Name :		Instrument	Run		2/13/2013 4:25:40 PM	(GMT --08:00) Pacific Standard Time	UC Davis	D8XSMGH1
Vendor : Agilent Technologies		Instrument	Run		2/13/2013 4:25:40 PM	(GMT --08:00) Pacific Standard Time	UC Davis	D8XSMGH1
Serial# : DE13701086		Instrument	Run		2/13/2013 4:25:40 PM	(GMT --08:00) Pacific Standard Time	UC Davis	D8XSMGH1
Firmware : C.01.069		Instrument	Run		2/13/2013 4:25:40 PM	(GMT --08:00) Pacific Standard Time	UC Davis	D8XSMGH1
Cartridge : Electrode		Instrument	Run		2/13/2013 4:25:40 PM	(GMT --08:00) Pacific Standard Time	UC Davis	D8XSMGH1