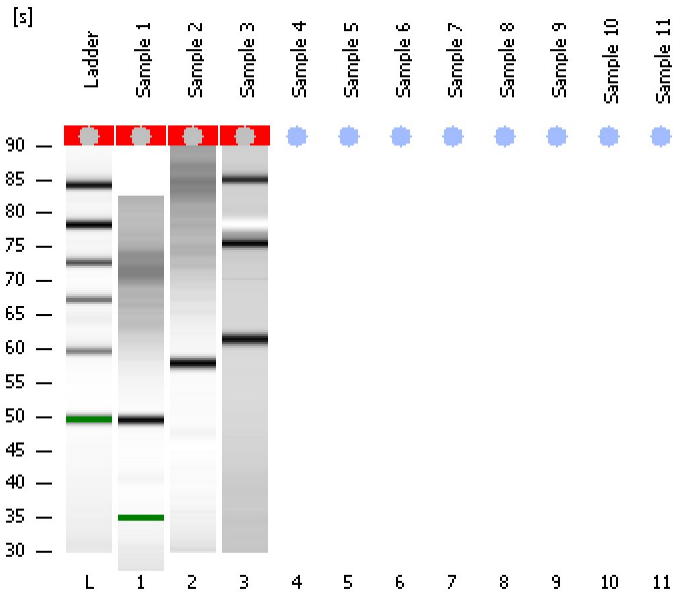


Assay Class: Small RNA
Data Path: C:\...ents and Settings\Bioanalyzer\2013-02-14\2013-02-14_001.xad

Created: 2/14/2013 11:07:40 AM
Modified: 2/14/2013 11:24:17 AM

Electrophoresis File Run Summary



Instrument Information:

Instrument Name: DE13701086 Firmware: C.01.069
Serial#: DE13701086 Type: G2938B

Assay Information:

Assay Origin Path: C:\Program Files\Agilent\2100 bioanalyzer\2100 expert\assays\RNA\Small RNA Series II.xsy

Assay Class: Small RNA

Version: 1.2

Assay Comments: Small RNA Analysis 6 - 150 nucleotides

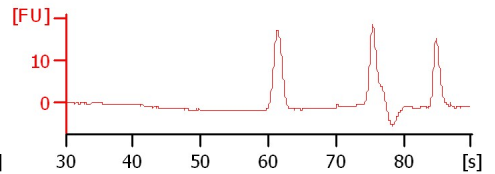
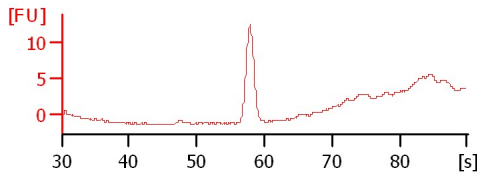
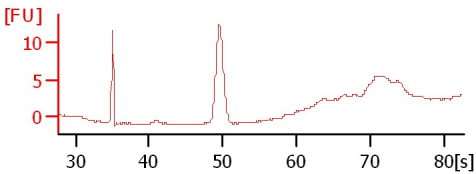
© Copyright 2007 - 2009 Agilent Technologies, Inc.

Chip Information:

Chip Lot #:

Reagent Kit Lot #:

Chip Comments:



Assay Class: Small RNA
 Data Path: C:\...ents and Settings\Bioanalyzer\2013-02-14\2013-02-14_001.xad

Created: 2/14/2013 11:07:40 AM
 Modified: 2/14/2013 11:24:17 AM

Electrophoresis File Run Summary (Chip Summary)

Sample Name	Sample Comment	Status	Result Label	Result Color
Sample 1		✓	Number of Peaks: 3	Grey
Sample 2		✓	Number of Peaks: 8	Grey
Sample 3		✓	Number of Peaks: 3	Grey
Sample 4				Blue
Sample 5				Blue
Sample 6				Blue
Sample 7				Blue
Sample 8				Blue
Sample 9				Blue
Sample 10				Blue
Sample 11				Blue
Ladder		✓	Number of Peaks: 3	Grey

Chip Lot #

Reagent Kit Lot #

Chip Comments :

Assay Class: Small RNA
Data Path: C:\...ents and Settings\Bioanalyzer\2013-02-14\2013-02-14_001.xad

Created: 2/14/2013 11:07:40 AM
Modified: 2/14/2013 11:24:17 AM

Electrophoresis Assay Details

General Analysis Settings

Number of Available Sample and Ladder Wells (Max.) : 12

Minimum Visible Range [s] : 30

Maximum Visible Range [s] : 90

Start Analysis Time Range [s] : 31

End Analysis Time Range [s] : 89

Ladder Concentration [pg/ μ l] : 2500

Lower Marker Concentration [pg/ μ l] : 500

Upper Marker Concentration [pg/ μ l] : 0

Used Lower Marker for Quantitation

Standard Curve Fit is Logarithmic

Show Data Aligned to Lower Marker

Integrator Settings

Integration Start Time [s] : 30

Integration End Time [s] : 89

Slope Threshold : 0.6

Height Threshold [FU] : 3

Area Threshold : 0.2

Width Threshold [s] : 0.5

Baseline Plateau [s] : 60

Filter Settings

Filter Width [s] : 0.5

Polynomial Order : 4

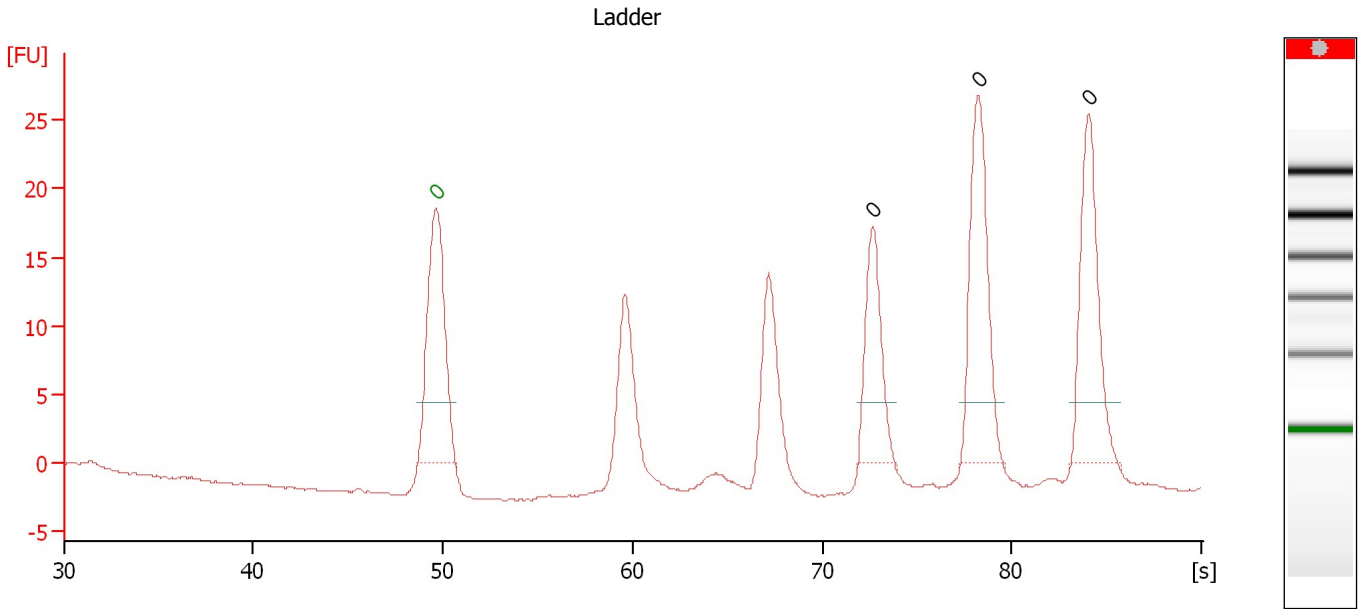
Ladder

Ladder Peak	Size
1	4
2	20
3	40
4	60
5	80
6	100
7	150

Assay Class: Small RNA
Data Path: C:\...ents and Settings\Bioanalyzer\2013-02-14\2013-02-14_001.xad

Created: 2/14/2013 11:07:40 AM
Modified: 2/14/2013 11:24:17 AM

Electropherogram Summary



Overall Results for Ladder

Result Flagging Color:

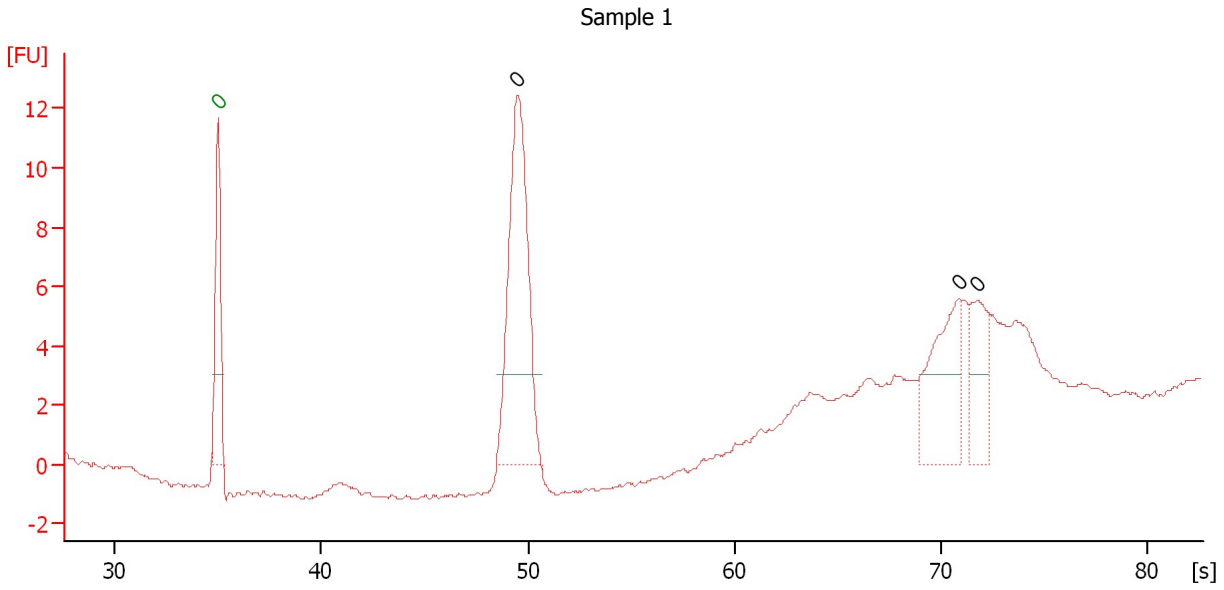
Result Flagging Label:

Number of Peaks: 3

Assay Class: Small RNA
Data Path: C:\...ents and Settings\Bioanalyzer\2013-02-14\2013-02-14_001.xad

Created: 2/14/2013 11:07:40 AM
Modified: 2/14/2013 11:24:17 AM

Electropherogram Summary Continued ...



Overall Results for sample 1 : Sample 1

Result Flagging Color:

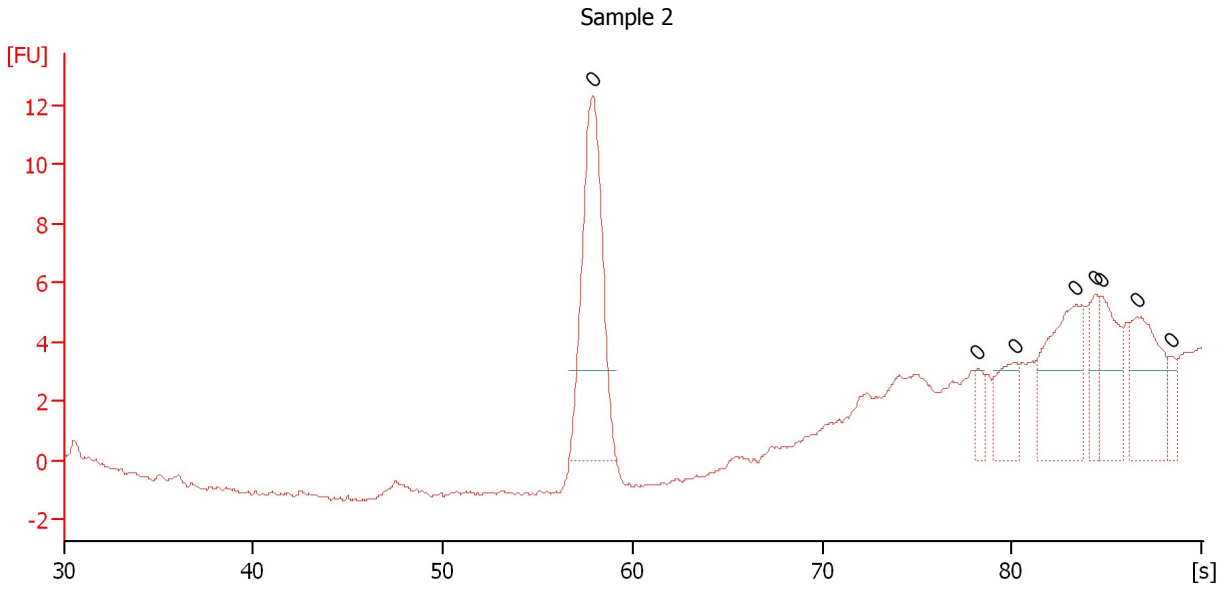
Result Flagging Label:

Number of Peaks: 3

Assay Class: Small RNA
Data Path: C:\...ents and Settings\Bioanalyzer\2013-02-14\2013-02-14_001.xad

Created: 2/14/2013 11:07:40 AM
Modified: 2/14/2013 11:24:17 AM

Electropherogram Summary Continued ...



Overall Results for sample 2 : Sample 2

Result Flagging Color:

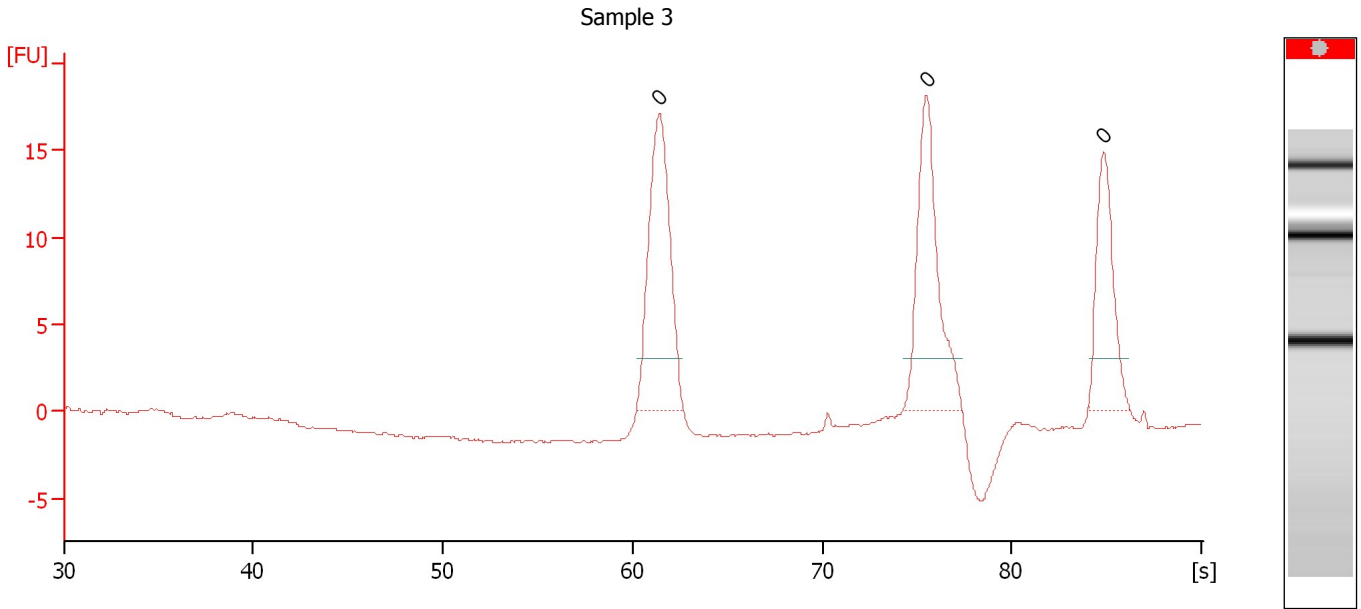
Result Flagging Label:

Number of Peaks: 8

Assay Class: Small RNA
Data Path: C:\...ents and Settings\Bioanalyzer\2013-02-14\2013-02-14_001.xad

Created: 2/14/2013 11:07:40 AM
Modified: 2/14/2013 11:24:17 AM

Electropherogram Summary Continued ...



Overall Results for sample 3 : Sample 3

Result Flagging Color:



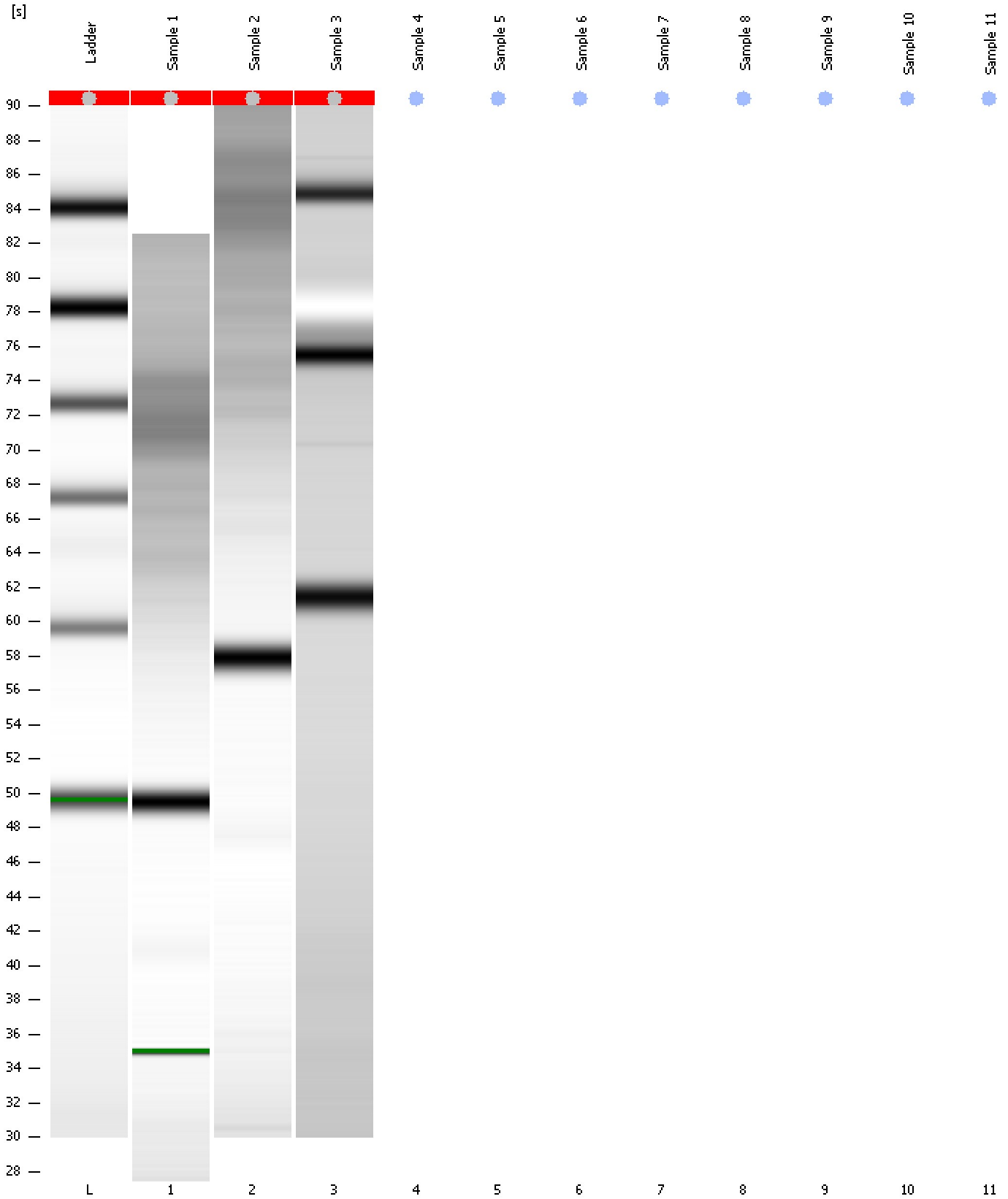
Result Flagging Label:

Number of Peaks: 3

Assay Class: Small RNA
Data Path: C:\...ents and Settings\Bioanalyzer\2013-02-14\2013-02-14_001.xad

Created: 2/14/2013 11:07:40 AM
Modified: 2/14/2013 11:24:17 AM

Gel Image



Assay Class: Small RNA
Data Path: C:\...ents and Settings\Bioanalyzer\2013-02-14\2013-02-14_001.xad

Created: 2/14/2013 11:07:40 AM
Modified: 2/14/2013 11:24:17 AM

Invalid Samples

- Sample 4 has not been run, no results available.
- Sample 5 has not been run, no results available.
- Sample 6 has not been run, no results available.
- Sample 7 has not been run, no results available.
- Sample 8 has not been run, no results available.
- Sample 9 has not been run, no results available.
- Sample 10 has not been run, no results available.
- Sample 11 has not been run, no results available.

Assay Class: Small RNA
 Data Path: C:\...ents and Settings\Bioanalyzer\2013-02-14\2013-02-14_001.xad

Created: 2/14/2013 11:07:40 AM
 Modified: 2/14/2013 11:24:17 AM

Run Logbook

Description	Number	Source	Category	Sub Category	Time	Time Zone	User	Host
Run ended on port 1 (Number of wells acquired: 4)		Instrument	Run		2/14/2013 11:24:16 AM	(GMT --08:00) Pacific Standard Time	UC Davis	D8XSMGH1
Run started on port 1 (File: C:\Documents and Settings\Bioanalyzer\2013-02-14\2013-02-14_001.xad)		Instrument	Run		2/14/2013 11:07:46 AM	(GMT --08:00) Pacific Standard Time	UC Davis	D8XSMGH1
Product Number : G2938B		Instrument	Run		2/14/2013 11:07:46 AM	(GMT --08:00) Pacific Standard Time	UC Davis	D8XSMGH1
Name :		Instrument	Run		2/14/2013 11:07:46 AM	(GMT --08:00) Pacific Standard Time	UC Davis	D8XSMGH1
Vendor : Agilent Technologies		Instrument	Run		2/14/2013 11:07:46 AM	(GMT --08:00) Pacific Standard Time	UC Davis	D8XSMGH1
Serial# : DE13701086		Instrument	Run		2/14/2013 11:07:46 AM	(GMT --08:00) Pacific Standard Time	UC Davis	D8XSMGH1
Firmware : C.01.069		Instrument	Run		2/14/2013 11:07:46 AM	(GMT --08:00) Pacific Standard Time	UC Davis	D8XSMGH1
Cartridge : Electrode		Instrument	Run		2/14/2013 11:07:46 AM	(GMT --08:00) Pacific Standard Time	UC Davis	D8XSMGH1