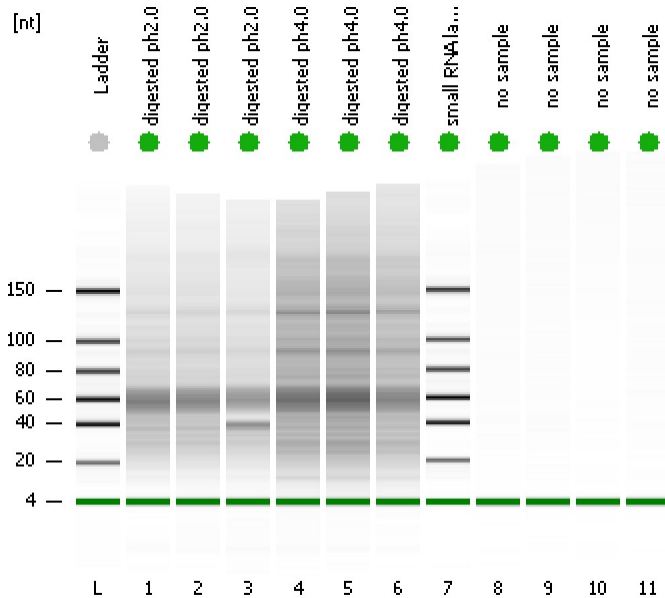


Assay Class: Small RNA  
Data Path: C:\...ents and Settings\Bioanalyzer\2013-02-15\2013-02-15\_002.xad

Created: 2/15/2013 10:51:42 AM  
Modified: 2/15/2013 11:27:13 AM

**Electrophoresis File Run Summary**



Instrument Information:

Instrument Name: DE13701086      Firmware: C.01.069  
Serial#: DE13701086      Type: G2938B

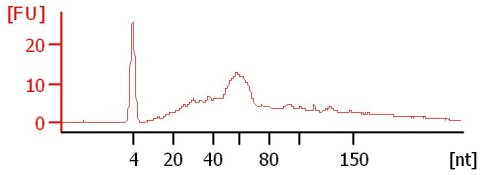
Assay Information:

Assay Origin Path: C:\Program Files\Agilent\2100 bioanalyzer\2100 expert\assays\RNA\Small RNA Series II.xsy  
Assay Class: Small RNA  
Version: 1.2  
Assay Comments: Small RNA Analysis 6 - 150 nucleotides  
© Copyright 2007 - 2009 Agilent Technologies, Inc.

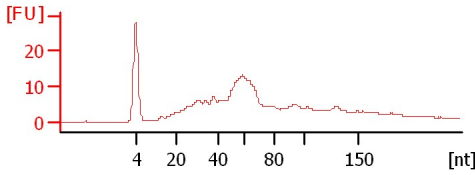
Chip Information:

Chip Lot #:   
Reagent Kit Lot #:   
Chip Comments:

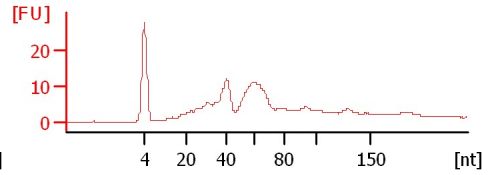
**digested pH2.0**  
39 % miRNA; Concentration: 747.30 pg/µl



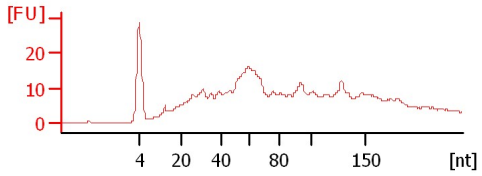
**digested pH2.0**  
39 % miRNA; Concentration: 712.10 pg/µl



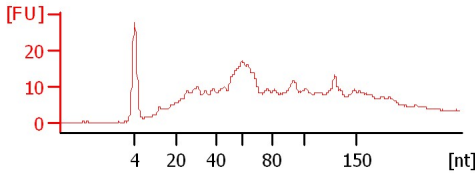
**digested pH2.0**  
41 % miRNA; Concentration: 640.20 pg/µl



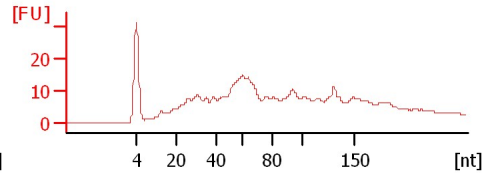
**digested pH4.0**  
37 % miRNA; Concentration: 1127.90 pg/µl



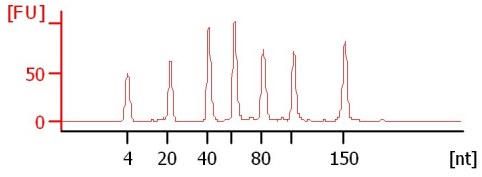
**digested pH4.0**  
37 % miRNA; Concentration: 1283.40 pg/µl



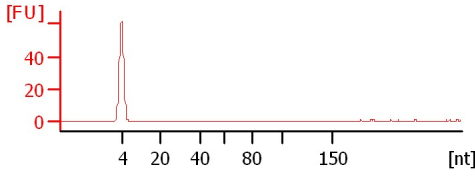
**digested pH4.0**  
37 % miRNA; Concentration: 949.40 pg/µl



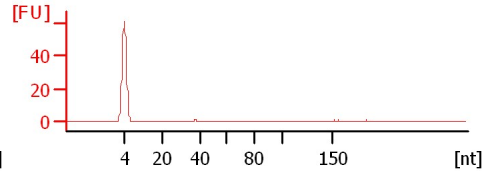
**small RNA ladder**  
33 % miRNA; Concentration: 819 pg/µl



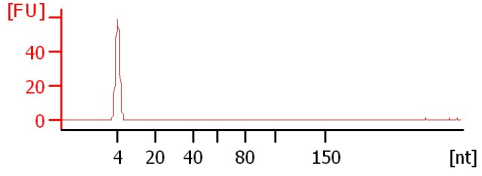
**no sample**  
13 % miRNA; Concentration: 11 pg/µl



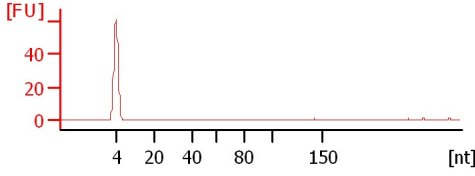
**no sample**  
22 % miRNA; Concentration: 16.90 pg/µl



**no sample**  
15 % miRNA; Concentration: 9.40 pg/µl















**no sample**  
23 % miRNA; Concentration: 19.80 pg/µl



Assay Class: Small RNA  
 Data Path: C:\...ents and Settings\Bioanalyzer\2013-02-15\2013-02-15\_002.xad

Created: 2/15/2013 10:51:42 AM  
 Modified: 2/15/2013 11:27:13 AM

**Electrophoresis File Run Summary (Chip Summary)**

Sample Name	Sample Comment	Status	Result Label	Result Color
digested ph2.0		✓	39 % miRNA; Concentration: 747.30 pg/μl	
digested ph2.0		✓	39 % miRNA; Concentration: 712.10 pg/μl	
digested ph2.0		✓	41 % miRNA; Concentration: 640.20 pg/μl	
digested ph4.0		✓	37 % miRNA; Concentration: 1127.90 pg/μl	
digested ph4.0		✓	37 % miRNA; Concentration: 1283.40 pg/μl	
digested ph4.0		✓	37 % miRNA; Concentration: 949.40 pg/μl	
small RNA ladder		✓	33 % miRNA; Concentration: 819 pg/μl	
no sample		✓	13 % miRNA; Concentration: 11 pg/μl	
no sample		✓	22 % miRNA; Concentration: 16.90 pg/μl	
no sample		✓	15 % miRNA; Concentration: 9.40 pg/μl	
no sample		✓	23 % miRNA; Concentration: 19.80 pg/μl	
Ladder		✓	Number of Peaks: 6	

**Chip Lot #**

**Reagent Kit Lot #**

**Chip Comments :**

Assay Class: Small RNA  
Data Path: C:\...ents and Settings\Bioanalyzer\2013-02-15\2013-02-15\_002.xad

Created: 2/15/2013 10:51:42 AM  
Modified: 2/15/2013 11:27:13 AM

**Electrophoresis Assay Details**

**General Analysis Settings**

Number of Available Sample and Ladder Wells (Max.) : 12  
Minimum Visible Range [s] : 30  
Maximum Visible Range [s] : 90  
Start Analysis Time Range [s] : 31  
End Analysis Time Range [s] : 89  
Ladder Concentration [pg/ $\mu$ l] : 2500  
Lower Marker Concentration [pg/ $\mu$ l] : 500  
Upper Marker Concentration [pg/ $\mu$ l] : 0  
Used Lower Marker for Quantitation  
Standard Curve Fit is Logarithmic  
Show Data Aligned to Lower Marker

**Integrator Settings**

Integration Start Time [s] : 30  
Integration End Time [s] : 89  
Slope Threshold : 0.6  
Height Threshold [FU] : 3  
Area Threshold : 0.2  
Width Threshold [s] : 0.5  
Baseline Plateau [s] : 60

**Filter Settings**

Filter Width [s] : 0.5  
Polynomial Order : 4

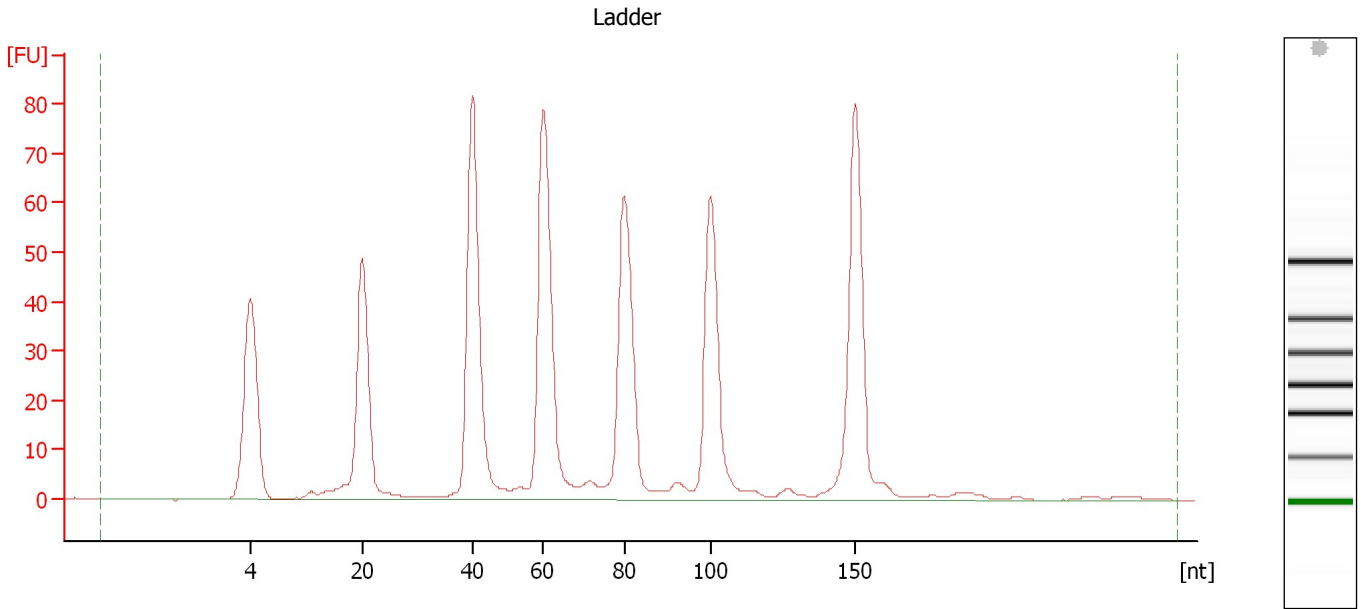
**Ladder**

Ladder Peak	Size
1	4
2	20
3	40
4	60
5	80
6	100
7	150

Assay Class: Small RNA  
Data Path: C:\...ents and Settings\Bioanalyzer\2013-02-15\2013-02-15\_002.xad

Created: 2/15/2013 10:51:42 AM  
Modified: 2/15/2013 11:27:13 AM

**Electropherogram Summary**



**Overall Results for Ladder**

Result Flagging Color:

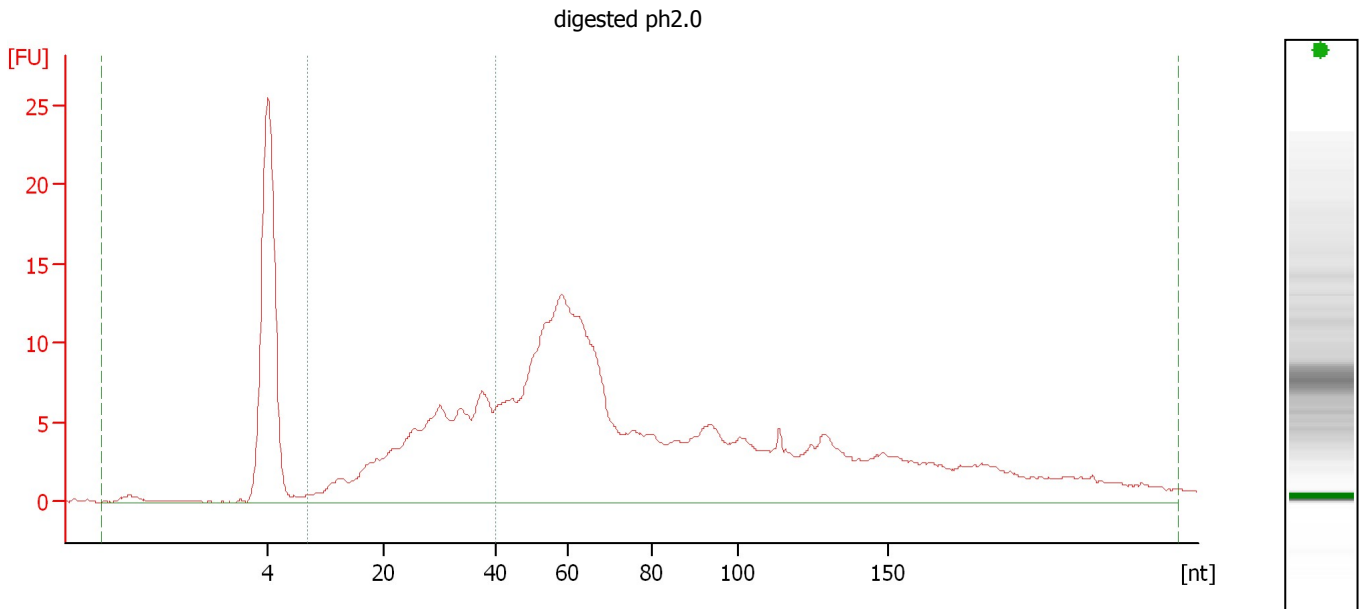
Result Flagging Label:

Number of Peaks: 6

Assay Class: Small RNA  
 Data Path: C:\...ents and Settings\Bioanalyzer\2013-02-15\2013-02-15\_002.xad

Created: 2/15/2013 10:51:42 AM  
 Modified: 2/15/2013 11:27:13 AM

**Electropherogram Summary Continued ...**



**Overall Results for sample 1 : digested ph2.0**

Small RNA Concentration [pg/μl]:	1,893.5	Result Flagging Color:	<span style="background-color: green; color: green;">████████</span>
miRNA Concentration [pg/μl]:	747.3	Result Flagging Label:	39 % miRNA; Concentration: 747.30 pg/μl
miRNA / Small RNA Ratio [%]:	39		

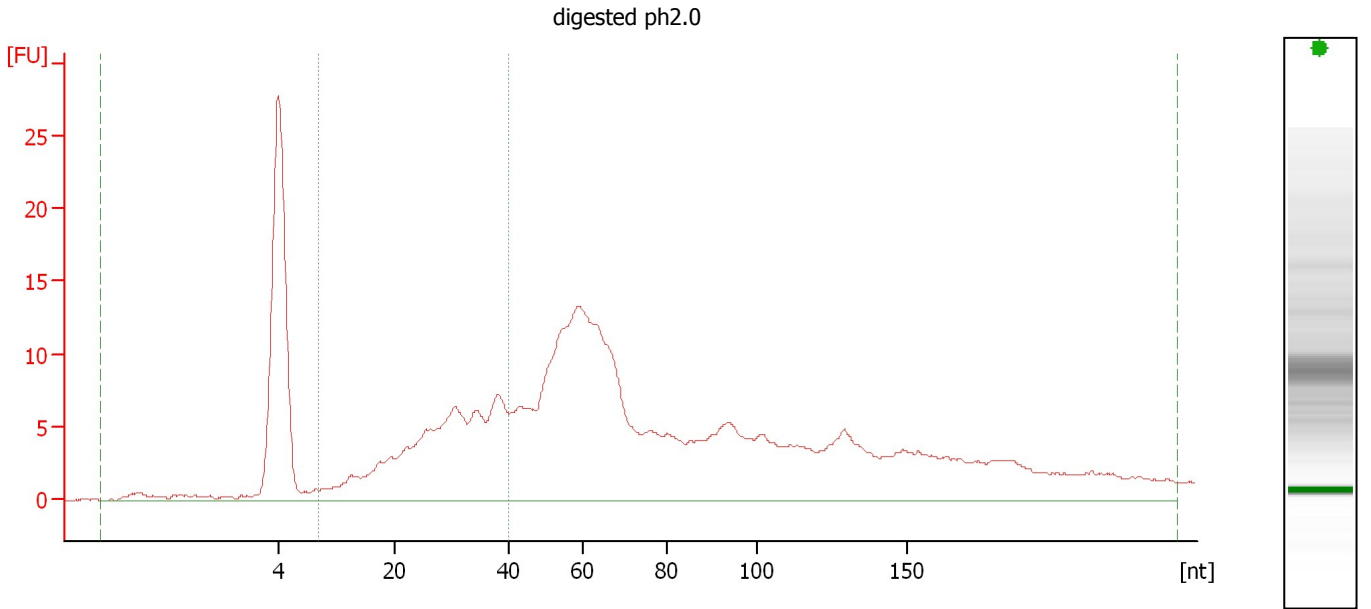
**Region table for sample 1 : digested ph2.0**

Name	From [nt]	To [nt]	Average Size [nt]	Size distribution in CV [%]	Conc. [pg/μl]	% of Total	Col or
Small RNA	0	248	77	75.7	1,893.5	100	<span style="background-color: maroon; color: maroon;">████</span>
miRNA	10	40	29	26.6	747.3	39	<span style="background-color: green; color: green;">████</span>

Assay Class: Small RNA  
 Data Path: C:\...ents and Settings\Bioanalyzer\2013-02-15\2013-02-15\_002.xad

Created: 2/15/2013 10:51:42 AM  
 Modified: 2/15/2013 11:27:13 AM

**Electropherogram Summary Continued ...**



**Overall Results for sample 2 : digested ph2.0**

Small RNA Concentration [pg/μl]:	1,840.3	Result Flagging Color:	<span style="background-color: green; color: black;"> </span>
miRNA Concentration [pg/μl]:	712.1	Result Flagging Label:	39 % miRNA; Concentration: 712.10 pg/μl
miRNA / Small RNA Ratio [%]:	39		

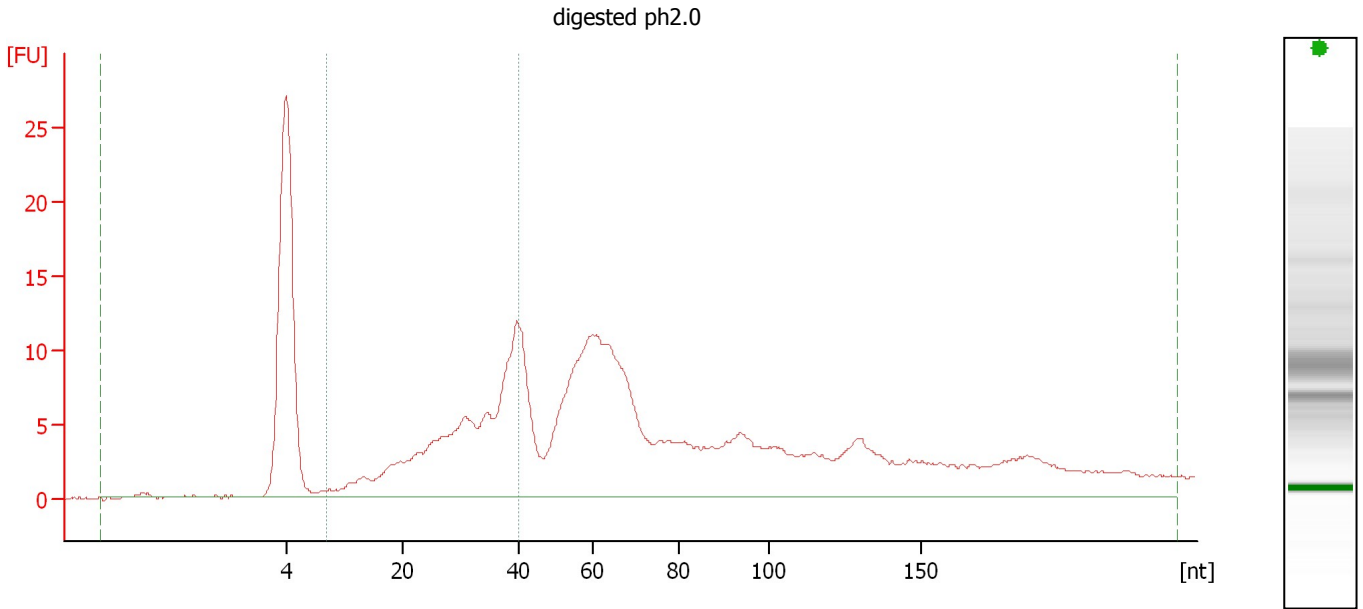
**Region table for sample 2 : digested ph2.0**

Name	From [nt]	To [nt]	Average Size [nt]	Size distribution in CV [%]	Conc. [pg/μl]	% of Total	Color
Small RNA	0	239	78	75.5	1,840.3	100	<span style="background-color: maroon; color: black;"> </span>
miRNA	10	40	28	27.1	712.1	39	<span style="background-color: green; color: black;"> </span>

Assay Class: Small RNA  
 Data Path: C:\...ents and Settings\Bioanalyzer\2013-02-15\2013-02-15\_002.xad

Created: 2/15/2013 10:51:42 AM  
 Modified: 2/15/2013 11:27:13 AM

**Electropherogram Summary Continued ...**



**Overall Results for sample 3 : digested ph2.0**

Small RNA Concentration [pg/μl]:	1,555.9	Result Flagging Color:	<span style="background-color: green; width: 20px; height: 10px; display: inline-block;"></span>
miRNA Concentration [pg/μl]:	640.2	Result Flagging Label:	41 % miRNA; Concentration: 640.20 pg/μl
miRNA / Small RNA Ratio [%]:	41		

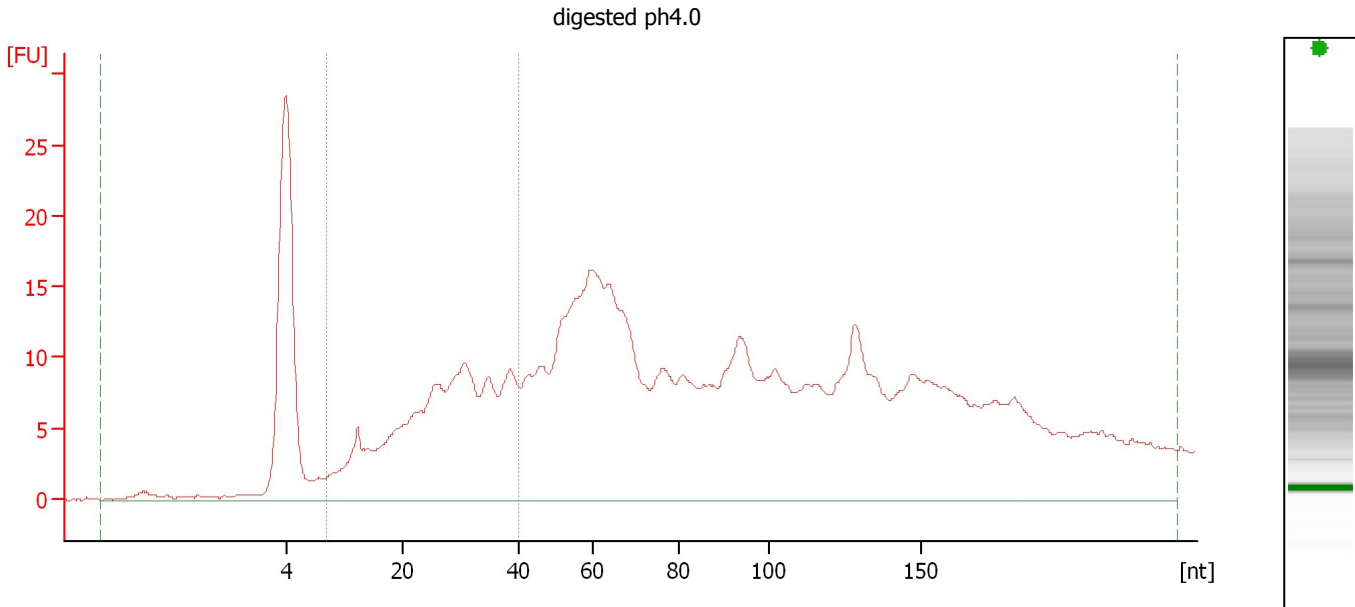
**Region table for sample 3 : digested ph2.0**

Name	From [nt]	To [nt]	Average Size [nt]	Size distribution in CV [%]	Conc. [pg/μl]	% of Total	Col or
Small RNA	0	234	76	77.3	1,555.9	100	<span style="background-color: maroon; width: 15px; height: 10px; display: inline-block;"></span>
miRNA	10	40	30	25.9	640.2	41	<span style="background-color: green; width: 15px; height: 10px; display: inline-block;"></span>

Assay Class: Small RNA  
 Data Path: C:\...ents and Settings\Bioanalyzer\2013-02-15\2013-02-15\_002.xad

Created: 2/15/2013 10:51:42 AM  
 Modified: 2/15/2013 11:27:13 AM

**Electropherogram Summary Continued ...**



**Overall Results for sample 4 : digested ph4.0**

Small RNA Concentration [pg/μl]:	3,046.4	Result Flagging Color:	<span style="background-color: green; color: green;"> </span>
miRNA Concentration [pg/μl]:	1,127.9	Result Flagging Label:	37 % miRNA; Concentration: 1127.90 pg/μl
miRNA / Small RNA Ratio [%]:	37		

**Region table for sample 4 : digested ph4.0**

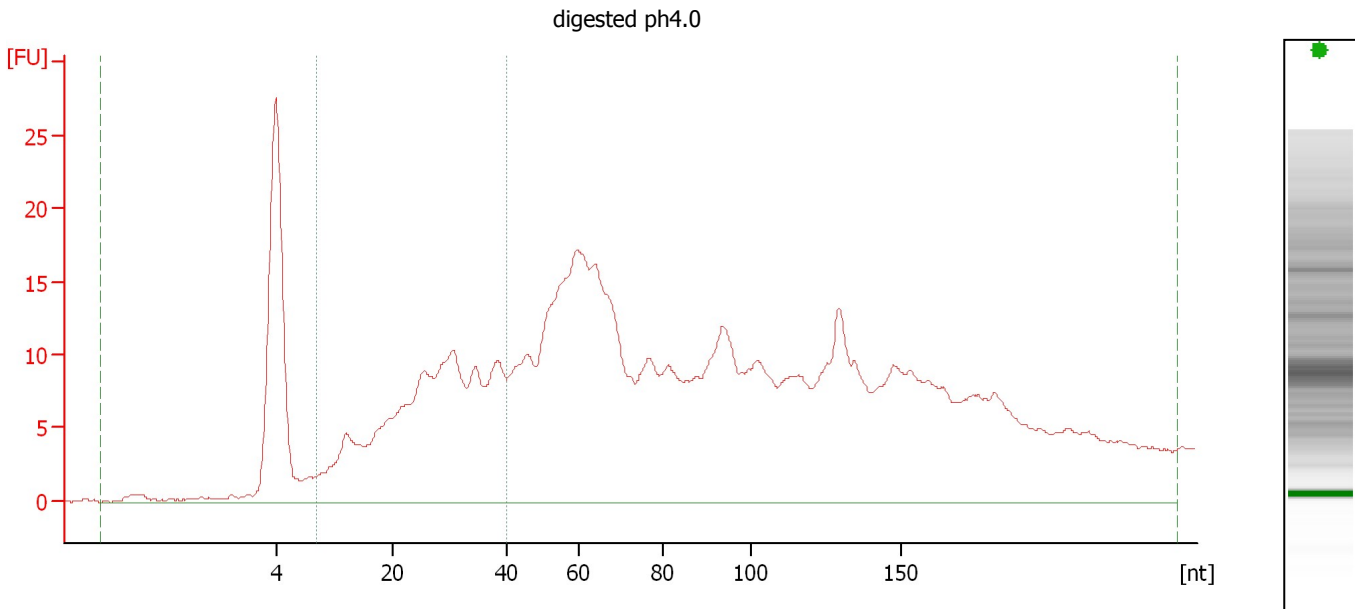
Name	From [nt]	To [nt]	Average Size [nt]	Size distribution in CV [%]	Conc. [pg/μl]	% of Total	Color
Small RNA	0	234	91	67.0	3,046.4	100	<span style="background-color: maroon; color: maroon;"> </span>
miRNA	10	40	27	29.9	1,127.9	37	<span style="background-color: green; color: green;"> </span>



Assay Class: Small RNA  
 Data Path: C:\...ents and Settings\Bioanalyzer\2013-02-15\2013-02-15\_002.xad

Created: 2/15/2013 10:51:42 AM  
 Modified: 2/15/2013 11:27:13 AM

**Electropherogram Summary Continued ...**



**Overall Results for sample 5 : digested ph4.0**

Small RNA Concentration [pg/μl]:	3,422.5	Result Flagging Color:	<span style="background-color: green; color: black;"> </span>
miRNA Concentration [pg/μl]:	1,283.4	Result Flagging Label:	37 % miRNA; Concentration: 1283.40 pg/μl
miRNA / Small RNA Ratio [%]:	37		

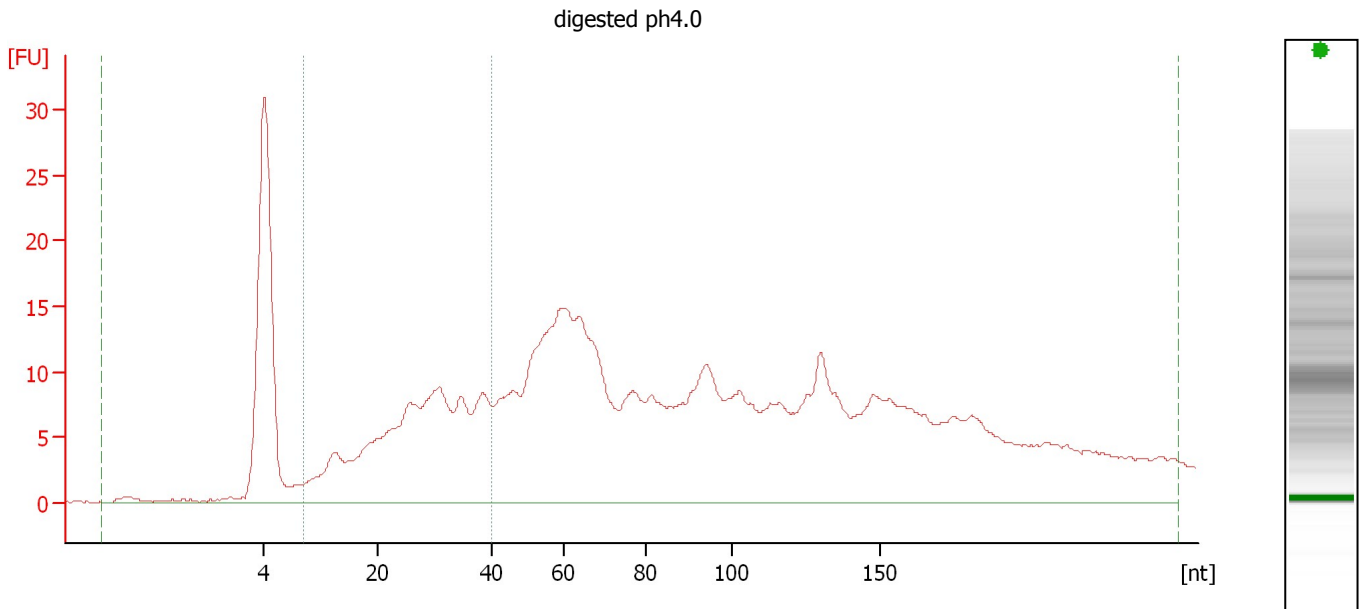
**Region table for sample 5 : digested ph4.0**

Name	From [nt]	To [nt]	Average Size [nt]	Size distribution in CV [%]	Conc. [pg/μl]	% of Total	Color
Small RNA	0	241	93	67.2	3,422.5	100	<span style="background-color: maroon; color: black;"> </span>
miRNA	10	40	27	30.0	1,283.4	37	<span style="background-color: green; color: black;"> </span>

Assay Class: Small RNA  
 Data Path: C:\...ents and Settings\Bioanalyzer\2013-02-15\2013-02-15\_002.xad

Created: 2/15/2013 10:51:42 AM  
 Modified: 2/15/2013 11:27:13 AM

**Electropherogram Summary Continued ...**



**Overall Results for sample 6 : digested ph4.0**

Small RNA Concentration [pg/μl]:	2,590.7	Result Flagging Color:	<span style="background-color: green; width: 20px; height: 10px; display: inline-block;"></span>
miRNA Concentration [pg/μl]:	949.4	Result Flagging Label:	37 % miRNA; Concentration: 949.40 pg/μl
miRNA / Small RNA Ratio [%]:	37		

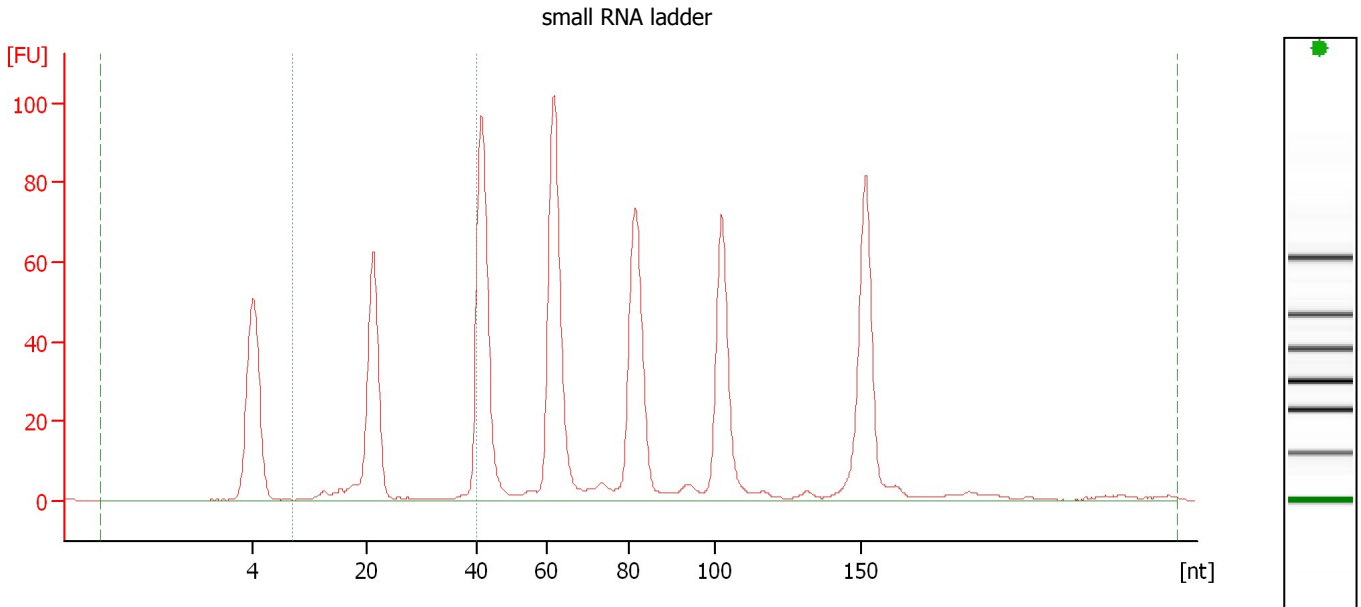
**Region table for sample 6 : digested ph4.0**

Name	From [nt]	To [nt]	Average Size [nt]	Size distribution in CV [%]	Conc. [pg/μl]	% of Total	Color
Small RNA	0	250	95	68.8	2,590.7	100	<span style="background-color: maroon; width: 15px; height: 10px; display: inline-block;"></span>
miRNA	10	40	27	29.6	949.4	37	<span style="background-color: green; width: 15px; height: 10px; display: inline-block;"></span>

Assay Class: Small RNA  
 Data Path: C:\...ents and Settings\Bioanalyzer\2013-02-15\2013-02-15\_002.xad

Created: 2/15/2013 10:51:42 AM  
 Modified: 2/15/2013 11:27:13 AM

**Electropherogram Summary Continued ...**



**Overall Results for sample 7 : small RNA ladder**

Small RNA Concentration [pg/μl]:	2,468.2	Result Flagging Color:	<span style="background-color: green; width: 20px; height: 10px; display: inline-block;"></span>
miRNA Concentration [pg/μl]:	819.0	Result Flagging Label:	33 % miRNA; Concentration: 819 pg/μl
miRNA / Small RNA Ratio [%]:	33		

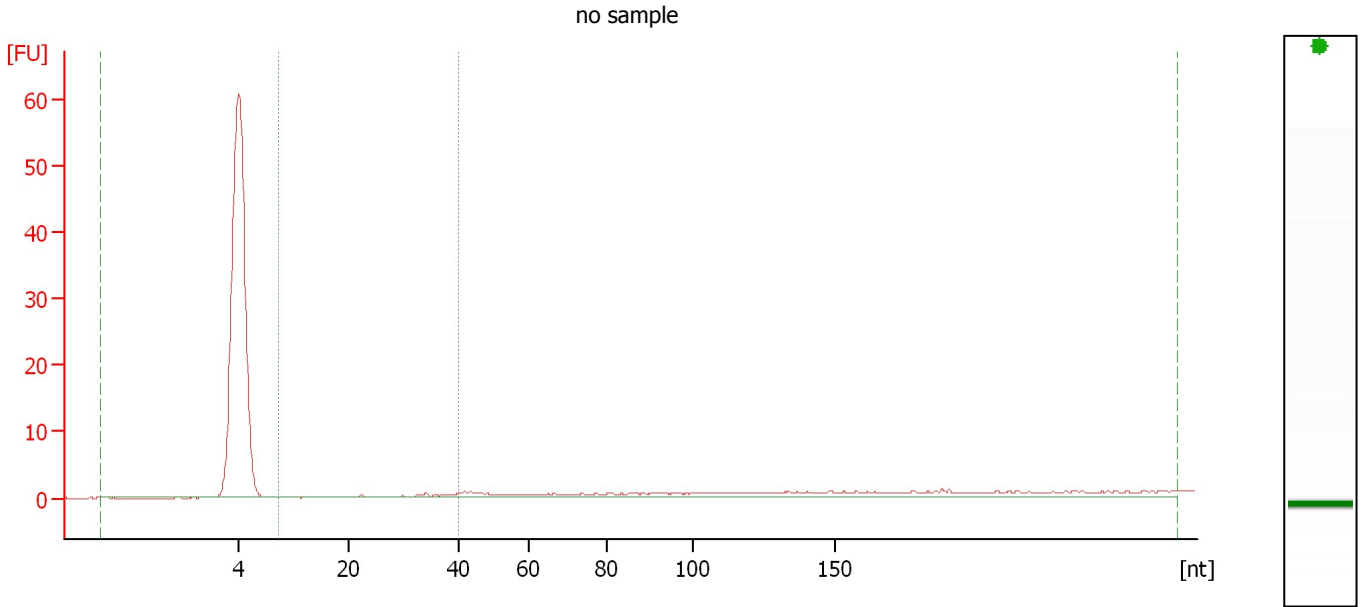
**Region table for sample 7 : small RNA ladder**

Name	From [nt]	To [nt]	Average Size [nt]	Size distribution in CV [%]	Conc. [pg/μl]	% of Total	Col or
Small RNA	0	258	77	66.5	2,468.2	100	<span style="background-color: maroon; width: 15px; height: 10px; display: inline-block;"></span>
miRNA	10	40	23	28.4	819.0	33	<span style="background-color: green; width: 15px; height: 10px; display: inline-block;"></span>

Assay Class: Small RNA  
 Data Path: C:\...ents and Settings\Bioanalyzer\2013-02-15\2013-02-15\_002.xad

Created: 2/15/2013 10:51:42 AM  
 Modified: 2/15/2013 11:27:13 AM

**Electropherogram Summary Continued ...**



**Overall Results for sample 8 : no sample**

Small RNA Concentration [pg/μl]:	83.5	Result Flagging Color:	<span style="background-color: green; color: black;"> </span>
miRNA Concentration [pg/μl]:	11.0	Result Flagging Label:	13 % miRNA; Concentration: 11 pg/μl
miRNA / Small RNA Ratio [%]:	13		

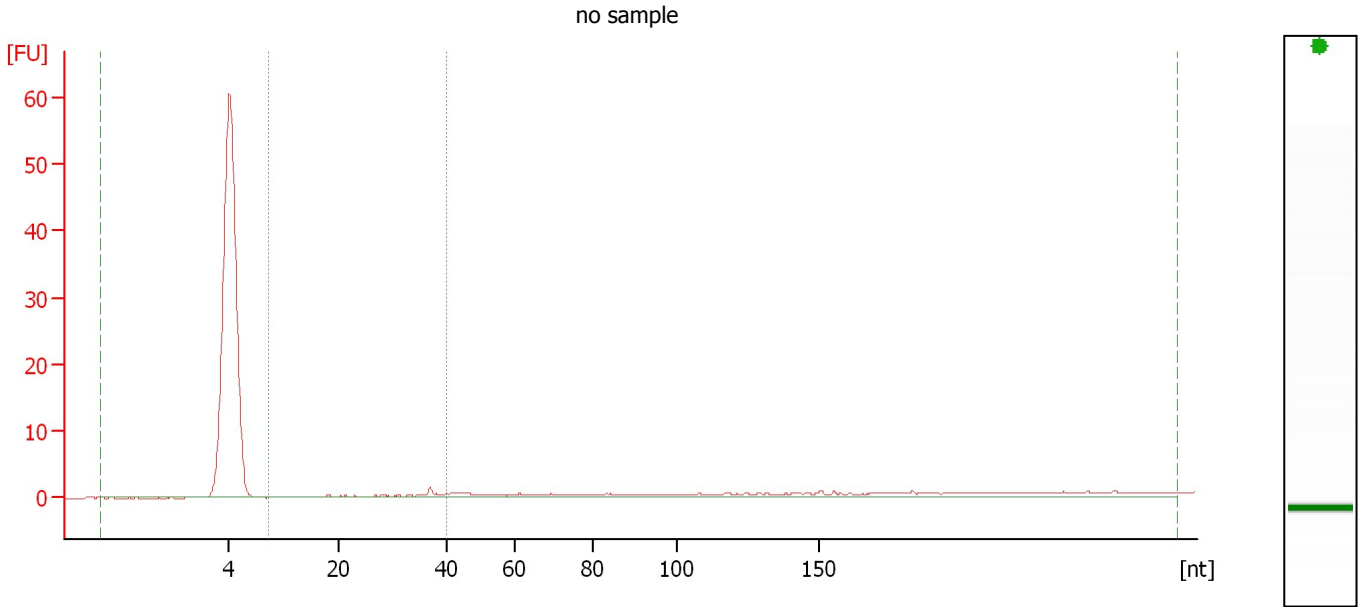
**Region table for sample 8 : no sample**

Name	From [nt]	To [nt]	Average Size [nt]	Size distribution in CV [%]	Conc. [pg/μl]	% of Total	Col or
Small RNA	0	269	56	100.0	83.5	100	<span style="background-color: maroon; color: black;"> </span>
miRNA	10	40	30	26.2	11.0	13	<span style="background-color: green; color: black;"> </span>

Assay Class: Small RNA  
 Data Path: C:\...ents and Settings\Bioanalyzer\2013-02-15\2013-02-15\_002.xad

Created: 2/15/2013 10:51:42 AM  
 Modified: 2/15/2013 11:27:13 AM

**Electropherogram Summary Continued ...**



**Overall Results for sample 9 : no sample**

Small RNA Concentration [pg/μl]:	77.5	Result Flagging Color:	<span style="background-color: green; color: black;"> </span>
miRNA Concentration [pg/μl]:	16.9	Result Flagging Label:	22 % miRNA; Concentration: 16.90 pg/μl
miRNA / Small RNA Ratio [%]:	22		

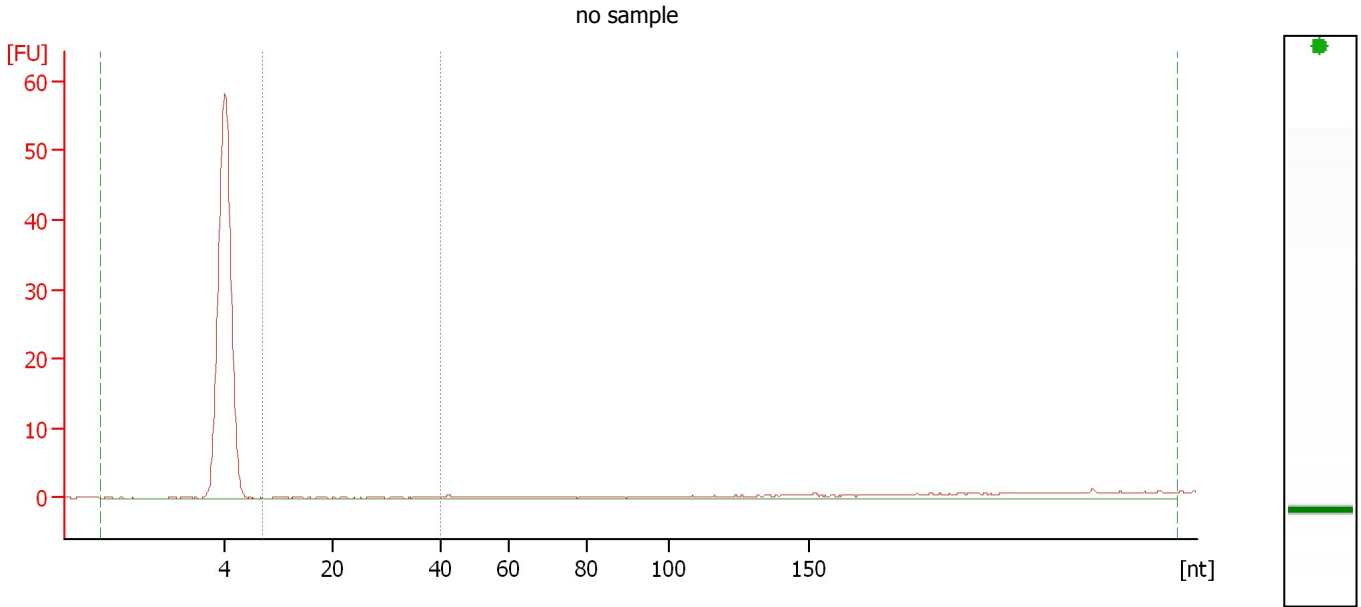
**Region table for sample 9 : no sample**

Name	From [nt]	To [nt]	Average Size [nt]	Size distribution in CV [%]	Conc. [pg/μl]	% of Total	Col or
Small RNA	0	277	52	100.0	77.5	100	<span style="background-color: purple; color: black;"> </span>
miRNA	10	40	29	31.2	16.9	22	<span style="background-color: green; color: black;"> </span>

Assay Class: Small RNA  
 Data Path: C:\...ents and Settings\Bioanalyzer\2013-02-15\2013-02-15\_002.xad

Created: 2/15/2013 10:51:42 AM  
 Modified: 2/15/2013 11:27:13 AM

**Electropherogram Summary Continued ...**



**Overall Results for sample 10 : no sample**

Small RNA Concentration [pg/μl]:	61.5	Result Flagging Color:	<span style="background-color: green; color: black;"> </span>
miRNA Concentration [pg/μl]:	9.4	Result Flagging Label:	15 % miRNA; Concentration: 9.40 pg/μl
miRNA / Small RNA Ratio [%]:	15		

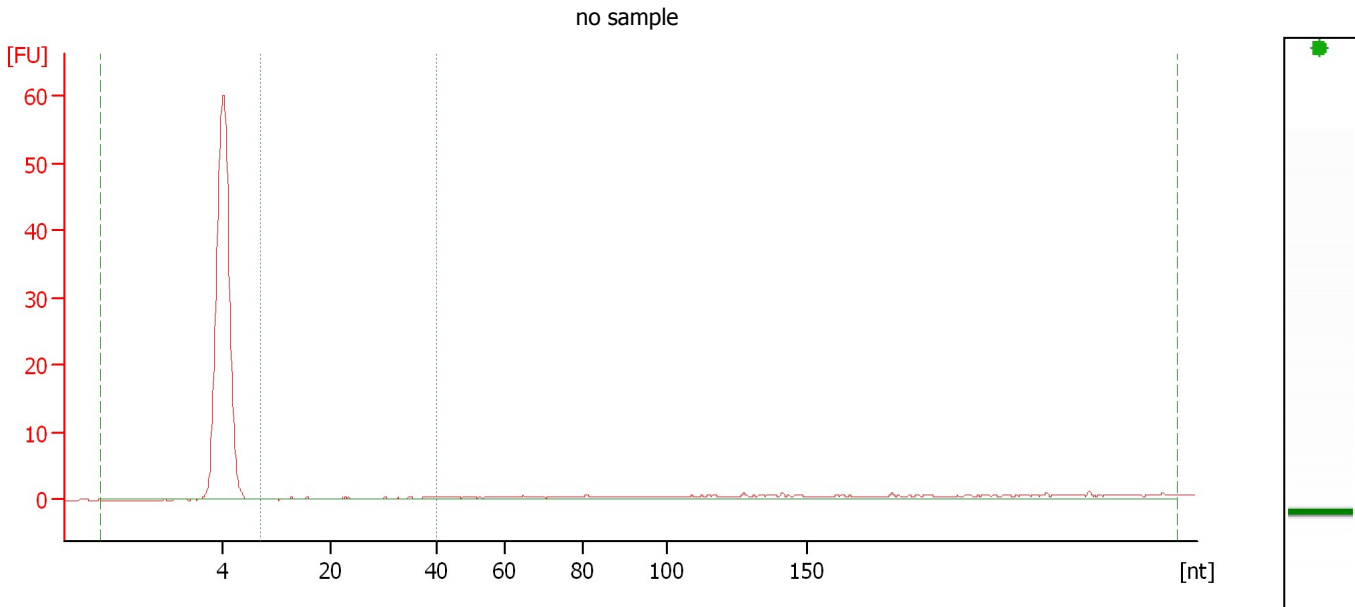
**Region table for sample 10 : no sample**

Name	From [nt]	To [nt]	Average Size [nt]	Size distribution in CV [%]	Conc. [pg/μl]	% of Total	Col or
Small RNA	0	281	55	100.0	61.5	100	<span style="background-color: maroon; color: black;"> </span>
miRNA	10	40	26	38.4	9.4	15	<span style="background-color: green; color: black;"> </span>

Assay Class: Small RNA  
 Data Path: C:\...ents and Settings\Bioanalyzer\2013-02-15\2013-02-15\_002.xad

Created: 2/15/2013 10:51:42 AM  
 Modified: 2/15/2013 11:27:13 AM

**Electropherogram Summary Continued ...**



**Overall Results for sample 11 : no sample**

Small RNA Concentration [pg/μl]:	85.6	Result Flagging Color:	<span style="background-color: green; color: black;"> </span>
miRNA Concentration [pg/μl]:	19.8	Result Flagging Label:	23 % miRNA; Concentration: 19.80 pg/μl
miRNA / Small RNA Ratio [%]:	23		

**Region table for sample 11 : no sample**

Name	From [nt]	To [nt]	Average Size [nt]	Size distribution in CV [%]	Conc. [pg/μl]	% of Total	Col or
Small RNA	0	282	54	100.0	85.6	100	<span style="background-color: maroon; color: black;"> </span>
miRNA	10	40	26	34.8	19.8	23	<span style="background-color: green; color: black;"> </span>

Assay Class: Small RNA  
Data Path: C:\...ents and Settings\Bioanalyzer\2013-02-15\2013-02-15\_002.xad

Created: 2/15/2013 10:51:42 AM  
Modified: 2/15/2013 11:27:13 AM

Gel Image

