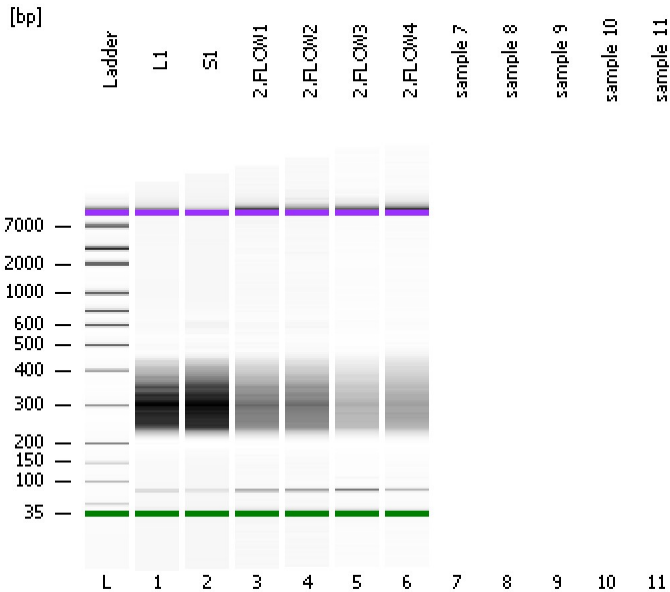


Assay Class: High Sensitivity DNA Assay  
Data Path: C:\...ents and Settings\Bioanalyzer\2013-02-15\2013-02-15\_003.xad

Created: 2/15/2013 1:12:43 PM  
Modified: 2/15/2013 1:40:57 PM

**Electrophoresis File Run Summary**



Instrument Information:

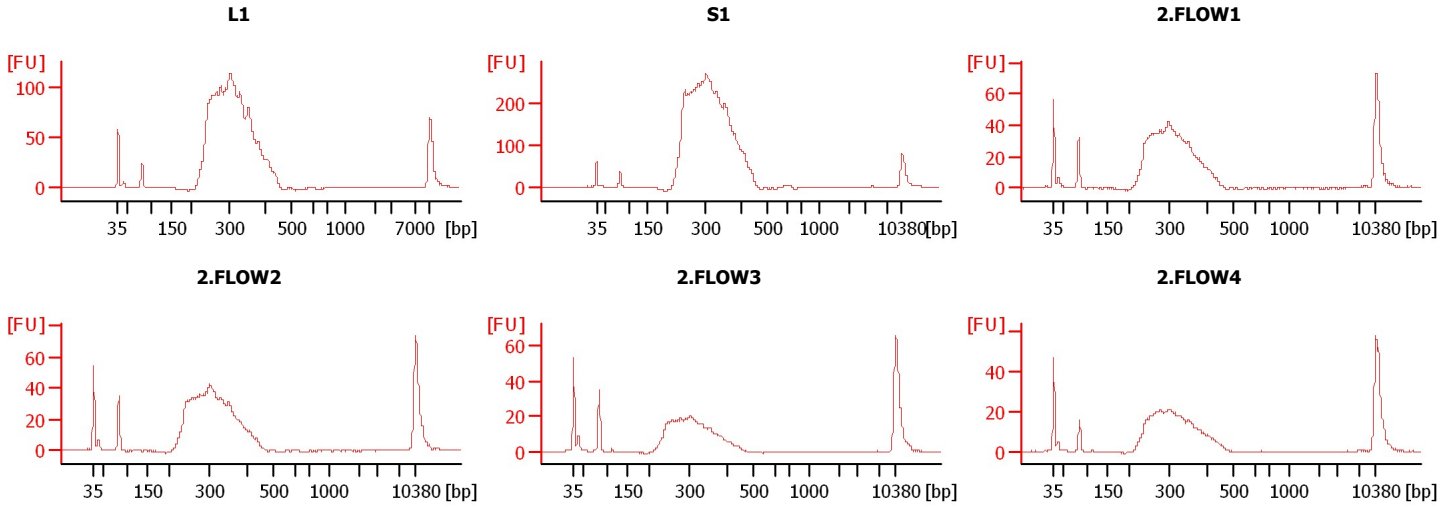
Instrument Name: DE13701086      Firmware: C.01.069  
Serial#: DE13701086      Type: G2938B

Assay Information:

Assay Origin Path: C:\Program Files\Agilent\2100 bioanalyzer\2100 expert\assays\dsDNA\High Sensitivity DNA.xsy  
Assay Class: High Sensitivity DNA Assay  
Version: 1.03  
Assay Comments: Copyright © 2003-2010 Agilent Technologies

Chip Information:

Chip Lot #:  
Reagent Kit Lot #:  
Chip Comments:



Assay Class: High Sensitivity DNA Assay  
Data Path: C:\...ents and Settings\Bioanalyzer\2013-02-15\2013-02-15\_003.xad

Created: 2/15/2013 1:12:43 PM  
Modified: 2/15/2013 1:40:57 PM

**Electrophoresis File Run Summary (Chip Summary)**

Sample Name	Sample Comment	Rest. Digest	Status	Observation	Result Label	Result Color
L1		<input type="checkbox"/>	✓			
S1		<input type="checkbox"/>	✓			
2.FLOW1		<input type="checkbox"/>	✓			
2.FLOW2		<input type="checkbox"/>	✓			
2.FLOW3		<input type="checkbox"/>	✓			
2.FLOW4		<input type="checkbox"/>	✓			
sample 7		<input type="checkbox"/>				
sample 8		<input type="checkbox"/>				
sample 9		<input type="checkbox"/>				
sample 10		<input type="checkbox"/>				
sample 11		<input type="checkbox"/>				
Ladder		<input type="checkbox"/>	✓			

**Chip Lot #**

**Reagent Kit Lot #**

**Chip Comments :**

Assay Class: High Sensitivity DNA Assay  
Data Path: C:\...ents and Settings\Bioanalyzer\2013-02-15\2013-02-15\_003.xad

Created: 2/15/2013 1:12:43 PM  
Modified: 2/15/2013 1:40:57 PM

**Electrophoresis Assay Details**

**General Analysis Settings**

Number of Available Sample and Ladder Wells (Max.) : 12  
Minimum Visible Range [s] : 32  
Maximum Visible Range [s] : 138  
Start Analysis Time Range [s] : 33  
End Analysis Time Range [s] : 137.5  
Ladder Concentration [pg/μl] : 1950  
Uses Standard Area for Ladder Fragments  
Lower Marker Concentration [pg/μl] : 125  
Upper Marker Concentration [pg/μl] : 75  
Used Upper Marker for Quantitation  
Standard Curve Fit is Point to Point  
Show Data Aligned to Lower and Upper Marker

**Integrator Settings**

Integration Start Time [s] : 33.05  
Integration End Time [s] : 137  
Slope Threshold : 0.8  
Height Threshold [FU] : 5  
Area Threshold : 0.1  
Width Threshold [s] : 0.6  
Baseline Plateau [s] : 0.5

**Filter Settings**

Filter Width [s] : 0.5  
Polynomial Order : 4

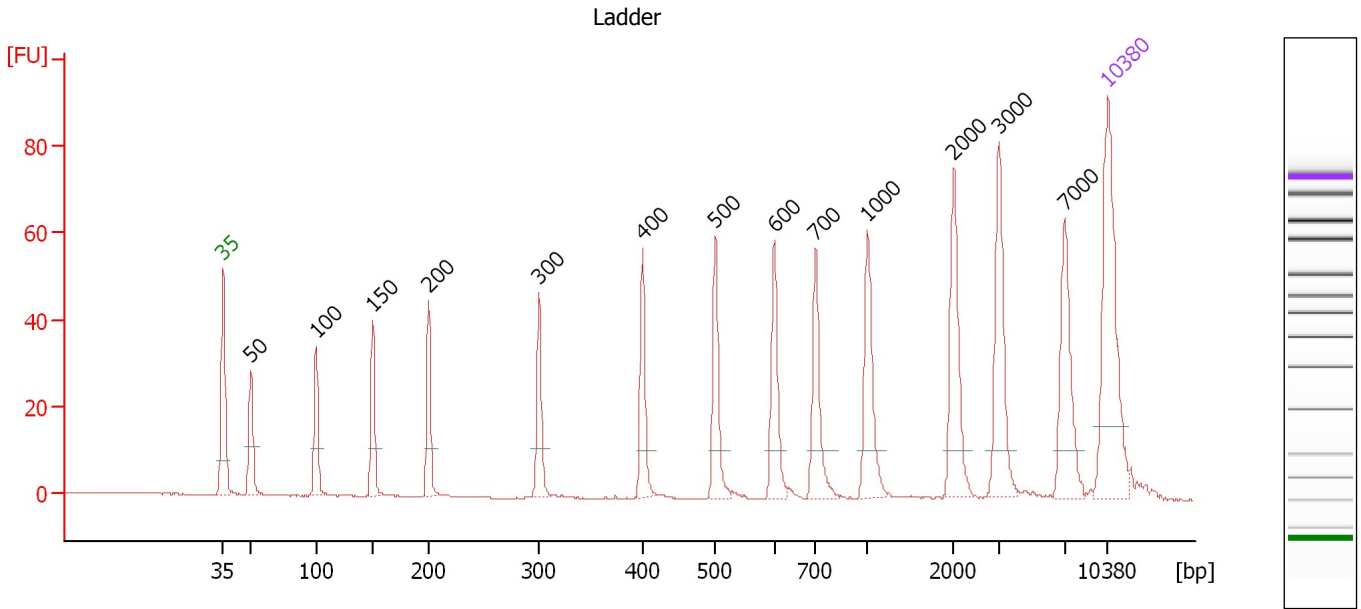
**Ladder**

Ladder Peak	Size	Area
1	35	160
2	50	210
3	100	208
4	150	221
5	200	242
6	300	270
7	400	305
8	500	306
9	600	336
10	700	321
11	1000	366
12	2000	413
13	3000	411
14	7000	400
15	10380	214

Assay Class: High Sensitivity DNA Assay  
 Data Path: C:\...ents and Settings\Bioanalyzer\2013-02-15\2013-02-15\_003.xad

Created: 2/15/2013 1:12:43 PM  
 Modified: 2/15/2013 1:40:57 PM

**Electropherogram Summary**



**Overall Results for Ladder**

Noise: 0.1

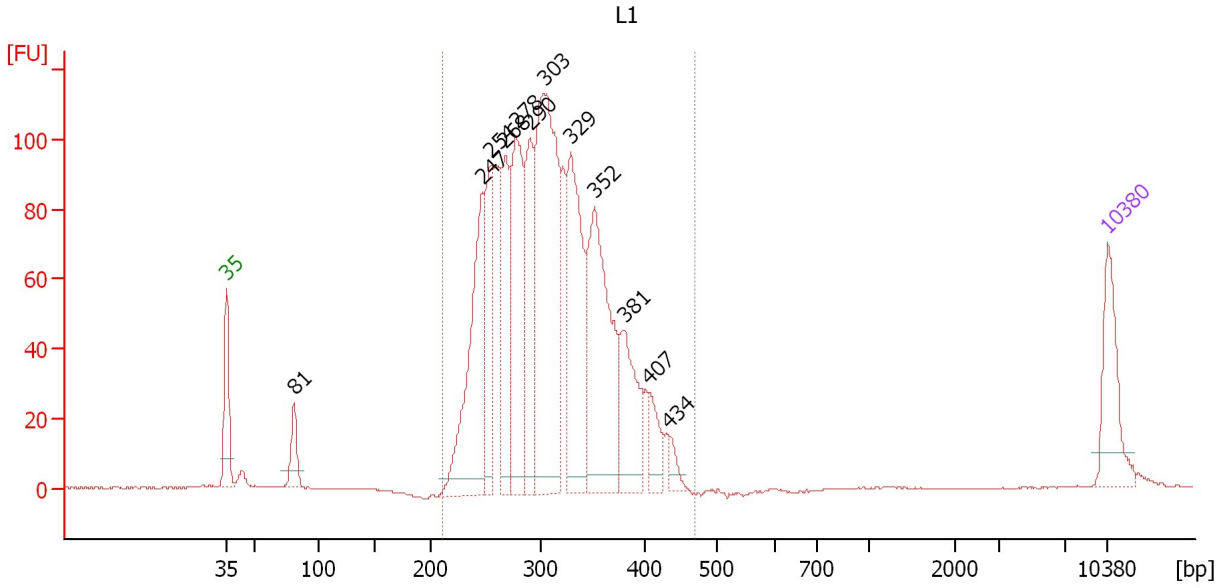
**Peak table for Ladder**

Peak	Size [bp]	Conc. [pg/μl]	Molarity [pmol/l]	Observations
1	35	125.00	5,411.3	Lower Marker
2	50	150.00	4,545.5	Ladder Peak
3	100	150.00	2,272.7	Ladder Peak
4	150	150.00	1,515.2	Ladder Peak
5	200	150.00	1,136.4	Ladder Peak
6	300	150.00	757.6	Ladder Peak
7	400	150.00	568.2	Ladder Peak
8	500	150.00	454.5	Ladder Peak
9	600	150.00	378.8	Ladder Peak
10	700	150.00	324.7	Ladder Peak
11	1,000	150.00	227.3	Ladder Peak
12	2,000	150.00	113.6	Ladder Peak
13	3,000	150.00	75.8	Ladder Peak
14	7,000	150.00	32.5	Ladder Peak
15	10,380	75.00	10.9	Upper Marker

Assay Class: High Sensitivity DNA Assay  
 Data Path: C:\...ents and Settings\Bioanalyzer\2013-02-15\2013-02-15\_003.xad

Created: 2/15/2013 1:12:43 PM  
 Modified: 2/15/2013 1:40:57 PM

**Electropherogram Summary Continued ...**



**Overall Results for sample 1 : L1**

Number of peaks found: 12                      Corr. Area 1: 1,769.0  
 Noise: 0.1

**Peak table for sample 1 : L1**

Peak	Size [bp]	Conc. [pg/μl]	Molarity [pmol/l]	Observations
1	35	125.00	5,411.3	Lower Marker
2	81	54.51	1,020.6	
3	247	305.81	1,877.9	
4	254	166.72	996.4	
5	268	166.99	945.5	
6	278	257.51	1,404.6	
7	290	174.68	913.0	
8	303	494.90	2,473.3	
9	329	272.64	1,255.4	
10	352	327.76	1,411.6	
11	381	132.22	526.1	
12	407	43.47	161.7	
13	434	20.87	72.8	
14	10,380	75.00	10.9	Upper Marker

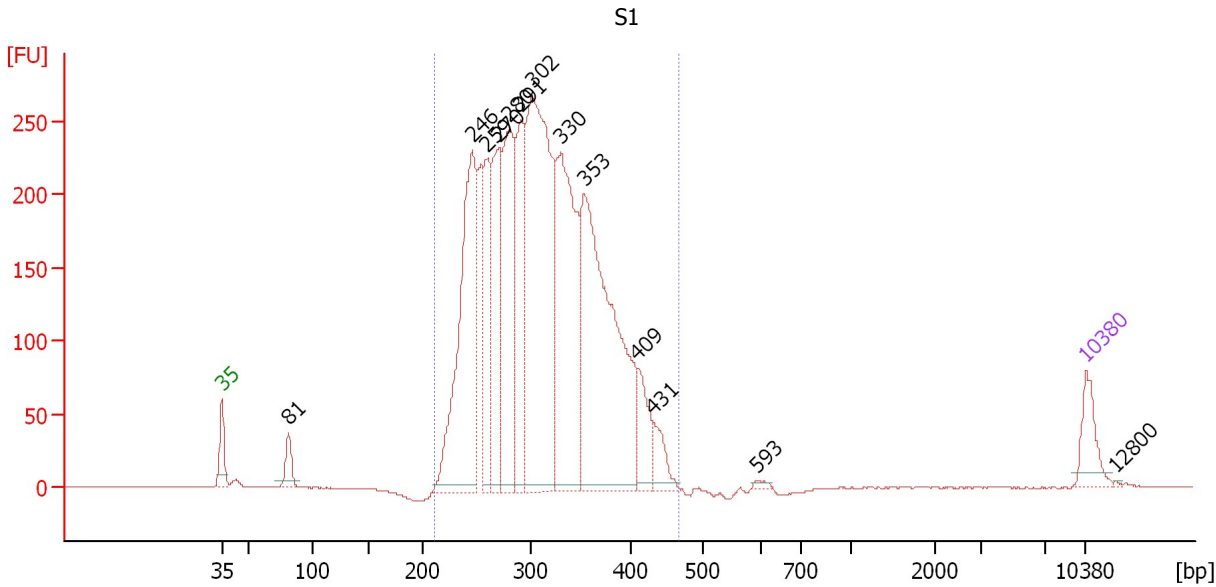
**Region table for sample 1 : L1**

From [bp]	To [bp]	Average Size [bp]	Molarity [pmol/l]	Conc. [pg/μl]	Corr. Area	% of Total	Size distribution in CV [%]	Color
211	470	310	12,956.1	2,566.89	1,769.0	98	15.6	Blue

Assay Class: High Sensitivity DNA Assay  
 Data Path: C:\...ents and Settings\Bioanalyzer\2013-02-15\2013-02-15\_003.xad

Created: 2/15/2013 1:12:43 PM  
 Modified: 2/15/2013 1:40:57 PM

**Electropherogram Summary Continued ...**



**Overall Results for sample 2 : S1**

Number of peaks found: 13                      Corr. Area 1: 4,614.1  
 Noise: 0.2

**Peak table for sample 2 : S1**

Peak	Size [bp]	Conc. [pg/μl]	Molarity [pmol/l]	Observations
1	35	125.00	5,411.3	Lower Marker
2	81	75.36	1,408.2	
3	246	858.87	5,284.6	
4	259	319.85	1,870.5	
5	270	425.00	2,380.9	
6	280	564.54	3,051.2	
7	291	369.93	1,924.7	
8	302	1,201.52	6,034.2	
9	330	788.98	3,620.7	
10	353	1,094.71	4,693.9	
11	409	139.33	516.6	
12	431	78.26	275.1	
13	593	9.74	24.9	
14	10,380	75.00	10.9	Upper Marker
15	12,800	0.00	0.0	

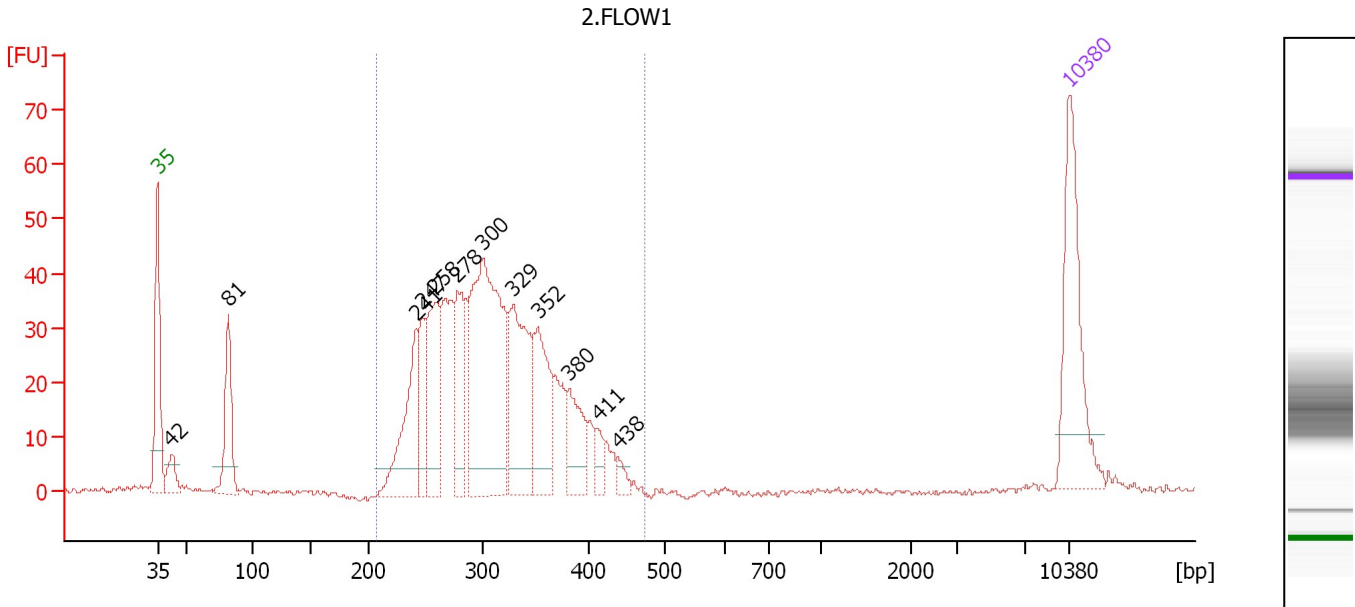
**Region table for sample 2 : S1**

From [bp]	To [bp]	Average Size [bp]	Molarity [pmol/l]	Conc. [pg/μl]	Corr. Area	% of Total	Size distribution in CV [%]	Color
211	466	312	29,697.2	5,907.67	4,614.1	98	16.4	Blue

Assay Class: High Sensitivity DNA Assay  
 Data Path: C:\...ents and Settings\Bioanalyzer\2013-02-15\2013-02-15\_003.xad

Created: 2/15/2013 1:12:43 PM  
 Modified: 2/15/2013 1:40:57 PM

**Electropherogram Summary Continued ...**



**Overall Results for sample 3 : 2.FLOW1**

Number of peaks found: 12      Corr. Area 1: 677.0  
 Noise: 0.5

**Peak table for sample 3 : 2.FLOW1**

Peak	Size [bp]	Conc. [pg/μl]	Molarity [pmol/l]	Observations
1	35	125.00	5,411.3	Lower Marker
2	42	21.83	783.5	
3	81	69.01	1,286.4	
4	241	85.97	539.7	
5	247	41.74	255.6	
6	258	80.59	472.4	
7	278	67.94	370.8	
8	300	232.26	1,171.7	
9	329	109.43	504.2	
10	352	70.47	303.3	
11	380	43.02	171.3	
12	411	12.46	45.9	
13	438	7.13	24.7	
14	10,380	75.00	10.9	Upper Marker

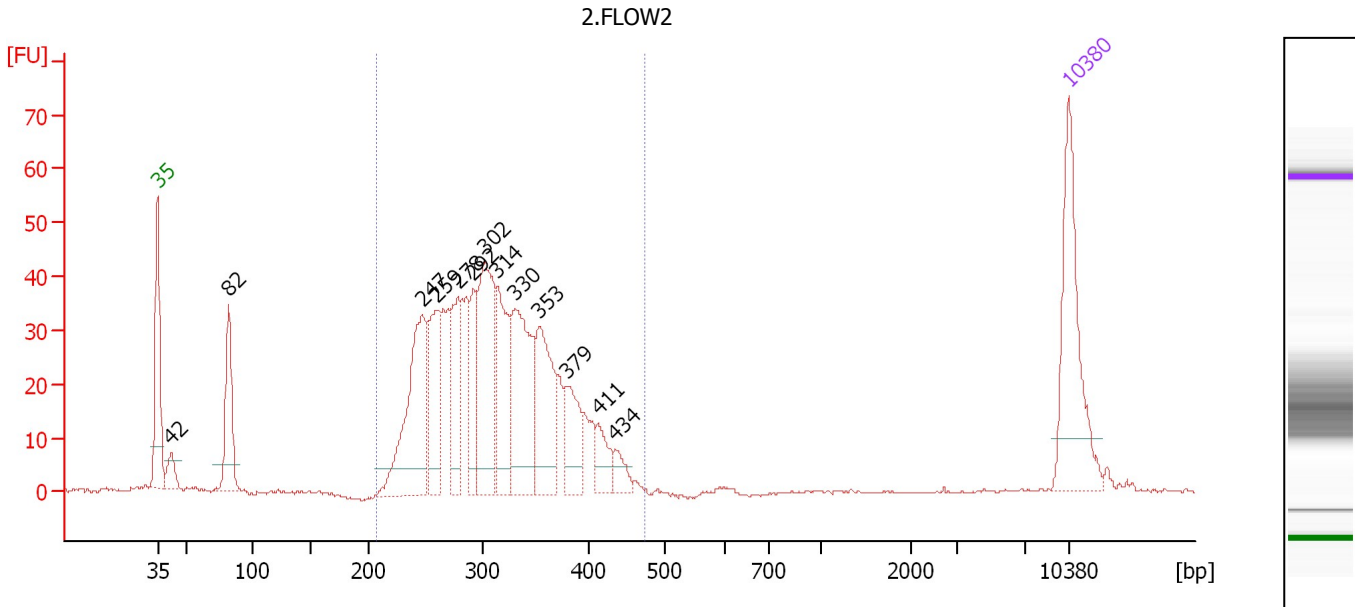
**Region table for sample 3 : 2.FLOW1**

From [bp]	To [bp]	Average Size [bp]	Molarity [pmol/l]	Conc. [pg/μl]	Corr. Area	% of Total	Size distribution in CV [%]	Color
207	474	311	4,429.5	879.31	677.0	91	16.4	Blue

Assay Class: High Sensitivity DNA Assay  
 Data Path: C:\...ents and Settings\Bioanalyzer\2013-02-15\2013-02-15\_003.xad

Created: 2/15/2013 1:12:43 PM  
 Modified: 2/15/2013 1:40:57 PM

**Electropherogram Summary Continued ...**



**Overall Results for sample 4 : 2.FLOW2**

Number of peaks found: 13      Corr. Area 1: 690.3  
 Noise: 0.2

**Peak table for sample 4 : 2.FLOW2**

Peak	Size [bp]	Conc. [pg/μl]	Molarity [pmol/l]	Observations
1	35	125.00	5,411.3	Lower Marker
2	42	18.35	661.2	
3	82	69.13	1,280.1	
4	247	130.45	801.5	
5	259	69.09	403.5	
6	278	56.69	309.0	
7	292	44.04	228.7	
8	302	114.67	576.0	
9	314	66.40	320.7	
10	330	105.39	484.5	
11	353	78.91	338.6	
12	379	38.64	154.3	
13	411	21.22	78.2	
14	434	12.99	45.3	
15	10,380	75.00	10.9	Upper Marker

**Region table for sample 4 : 2.FLOW2**

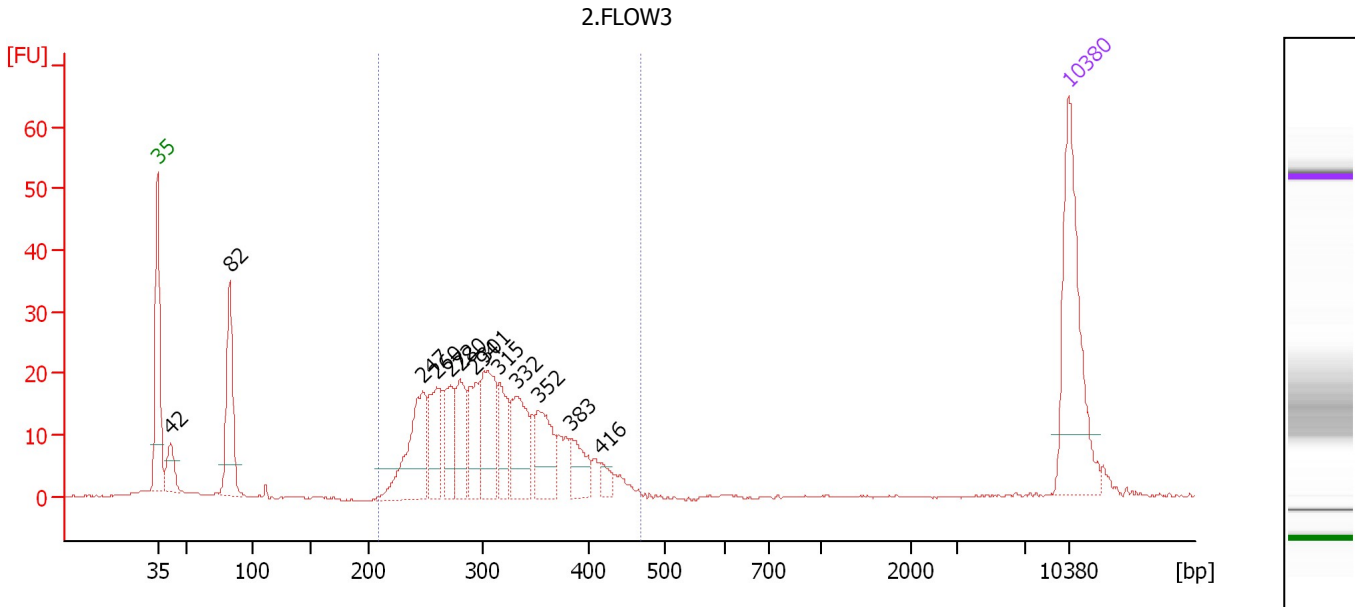
From [bp]	To [bp]	Average Size [bp]	Molarity [pmol/l]	Conc. [pg/μl]	Corr. Area	% of Total	Size distribution in CV [%]	Color
207	473	313	4,455.0	888.46	690.3	91	16.6	Blue



Assay Class: High Sensitivity DNA Assay  
 Data Path: C:\...ents and Settings\Bioanalyzer\2013-02-15\2013-02-15\_003.xad

Created: 2/15/2013 1:12:43 PM  
 Modified: 2/15/2013 1:40:57 PM

**Electropherogram Summary Continued ...**



**Overall Results for sample 5 : 2.FLOW3**

Number of peaks found: 13      Corr. Area 1: 333.7  
 Noise: 0.2

**Peak table for sample 5 : 2.FLOW3**

Peak	Size [bp]	Conc. [pg/μl]	Molarity [pmol/l]	Observations
1	35	125.00	5,411.3	Lower Marker
2	42	23.18	838.7	
3	82	75.79	1,393.1	
4	247	70.56	432.9	
5	260	39.44	230.2	
6	272	35.62	198.7	
7	280	37.67	203.9	
8	294	36.29	187.3	
9	301	57.78	290.9	
10	315	30.69	147.7	
11	332	45.69	208.7	
12	352	38.20	164.5	
13	383	22.17	87.7	
14	416	6.99	25.5	
15	10,380	75.00	10.9	Upper Marker

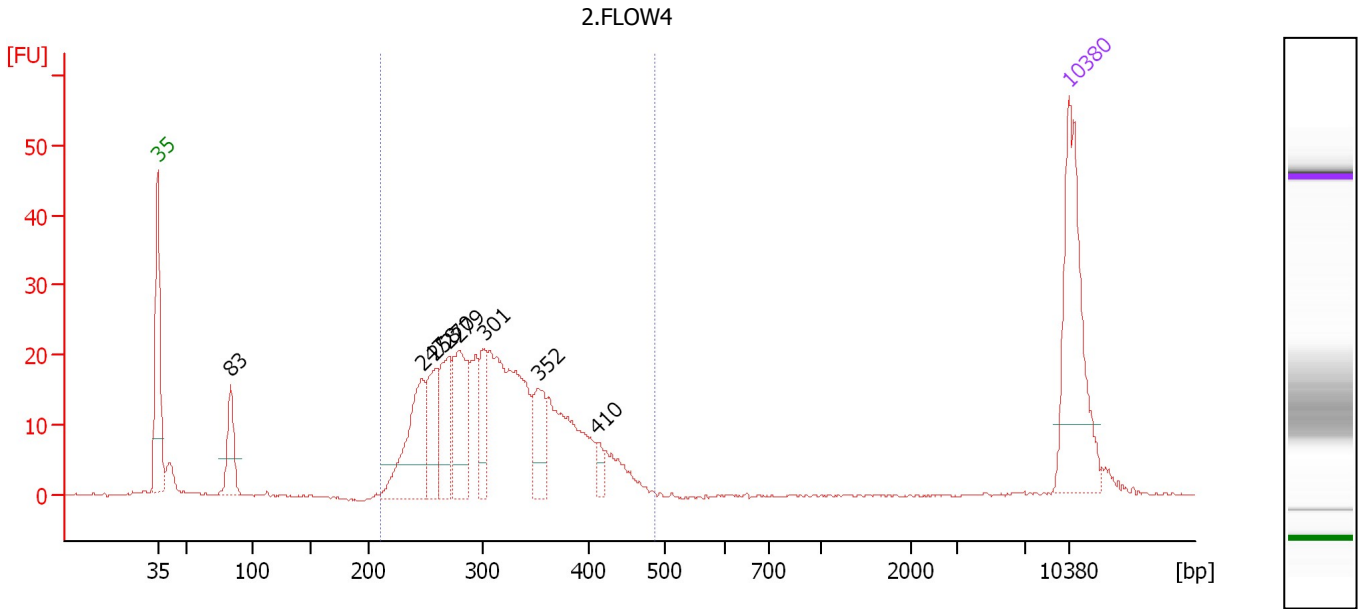
**Region table for sample 5 : 2.FLOW3**

From [bp]	To [bp]	Average Size [bp]	Molarity [pmol/l]	Conc. [pg/μl]	Corr. Area	% of Total	Size distribution in CV [%]	Color
208	469	312	2,338.4	464.73	333.7	83	16.7	Blue

Assay Class: High Sensitivity DNA Assay  
 Data Path: C:\...ents and Settings\Bioanalyzer\2013-02-15\2013-02-15\_003.xad

Created: 2/15/2013 1:12:43 PM  
 Modified: 2/15/2013 1:40:57 PM

**Electropherogram Summary Continued ...**



**Overall Results for sample 6 : 2.FLOW4**

Number of peaks found: 8      Corr. Area 1: 370.9  
 Noise: 0.2

**Peak table for sample 6 : 2.FLOW4**

Peak	Size [bp]	Conc. [pg/μl]	Molarity [pmol/l]	Observations
1	35	125.00	5,411.3	Lower Marker
2	83	36.56	665.0	
3	247	75.83	465.7	
4	258	41.25	242.0	
5	270	45.99	258.1	
6	279	53.59	291.2	
7	301	30.39	152.9	
8	352	34.45	148.1	
9	410	7.86	29.0	
10	10,380	75.00	10.9	Upper Marker

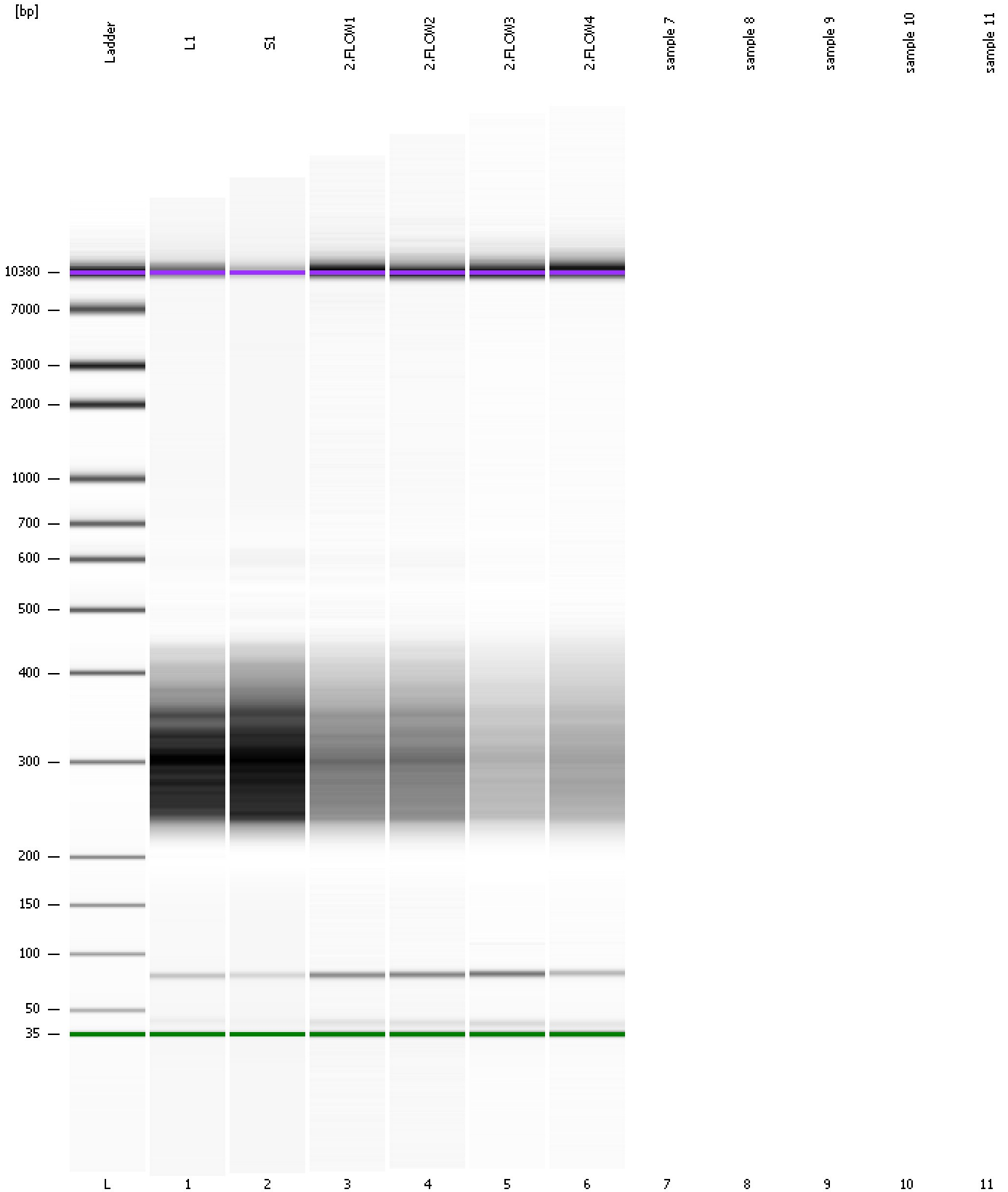
**Region table for sample 6 : 2.FLOW4**

From [bp]	To [bp]	Average Size [bp]	Molarity [pmol/l]	Conc. [pg/μl]	Corr. Area	% of Total	Size distribution in CV [%]	Color
209	487	316	2,732.5	548.04	370.9	91	17.5	Blue

Assay Class: High Sensitivity DNA Assay  
Data Path: C:\...ents and Settings\Bioanalyzer\2013-02-15\2013-02-15\_003.xad

Created: 2/15/2013 1:12:43 PM  
Modified: 2/15/2013 1:40:57 PM

**Gel Image**



Assay Class: High Sensitivity DNA Assay  
Data Path: C:\...ents and Settings\Bioanalyzer\2013-02-15\2013-02-15\_003.xad

Created: 2/15/2013 1:12:43 PM  
Modified: 2/15/2013 1:40:57 PM

**Invalid Samples**

Sample 7 has not been run, no results available.

Sample 8 has not been run, no results available.

Sample 9 has not been run, no results available.

Sample 10 has not been run, no results available.

Sample 11 has not been run, no results available.

Assay Class: High Sensitivity DNA Assay  
 Data Path: C:\...ents and Settings\Bioanalyzer\2013-02-15\2013-02-15\_003.xad

Created: 2/15/2013 1:12:43 PM  
 Modified: 2/15/2013 1:40:57 PM

**Run Logbook**

Description	Number	Source	Category	Sub Category	Time	Time Zone	User	Host
Run ended on port 1 (Number of wells acquired: 7)		Instrument	Run		2/15/2013 1:39:45 PM	(GMT --08:00) Pacific Standard Time	UC Davis	D8XSMGH1
Run started on port 1 (File: C:\Documents and Settings\Bioanalyzer\2013-02-15\2013-02-15_003.xad)		Instrument	Run		2/15/2013 1:12:49 PM	(GMT --08:00) Pacific Standard Time	UC Davis	D8XSMGH1
Product Number : G2938B		Instrument	Run		2/15/2013 1:12:49 PM	(GMT --08:00) Pacific Standard Time	UC Davis	D8XSMGH1
Name :		Instrument	Run		2/15/2013 1:12:49 PM	(GMT --08:00) Pacific Standard Time	UC Davis	D8XSMGH1
Vendor : Agilent Technologies		Instrument	Run		2/15/2013 1:12:49 PM	(GMT --08:00) Pacific Standard Time	UC Davis	D8XSMGH1
Serial# : DE13701086		Instrument	Run		2/15/2013 1:12:49 PM	(GMT --08:00) Pacific Standard Time	UC Davis	D8XSMGH1
Firmware : C.01.069		Instrument	Run		2/15/2013 1:12:49 PM	(GMT --08:00) Pacific Standard Time	UC Davis	D8XSMGH1
Cartridge : Electrode		Instrument	Run		2/15/2013 1:12:49 PM	(GMT --08:00) Pacific Standard Time	UC Davis	D8XSMGH1