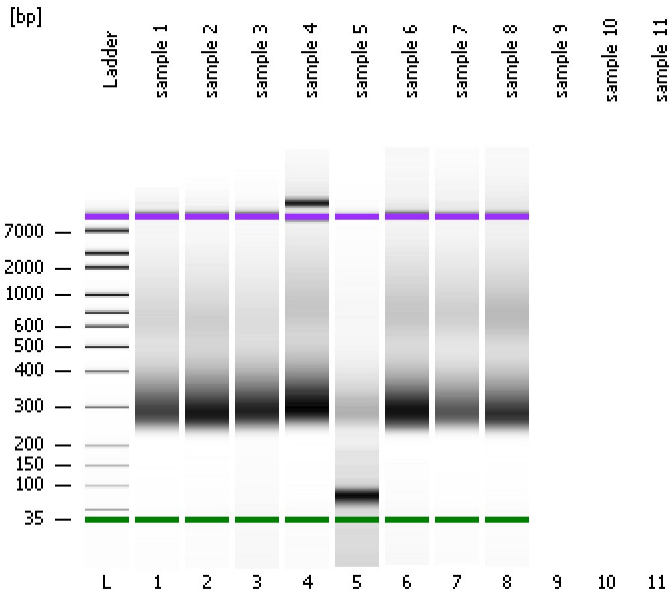


Assay Class: High Sensitivity DNA Assay
Data Path: C:\...ents and Settings\Bioanalyzer\2013-02-25\2013-02-25_001.xad

Created: 2/25/2013 11:25:32 AM
Modified: 2/25/2013 12:18:42 PM

Electrophoresis File Run Summary



Instrument Information:

Instrument Name: DE13701086 Firmware: C.01.069
Serial#: DE13701086 Type: G2938B

Assay Information:

Assay Origin Path: C:\Program Files\Agilent\2100 bioanalyzer\2100 expert\assays\dsDNA\High Sensitivity DNA.xsy
Assay Class: High Sensitivity DNA Assay
Version: 1.03
Assay Comments: Copyright © 2003-2010 Agilent Technologies

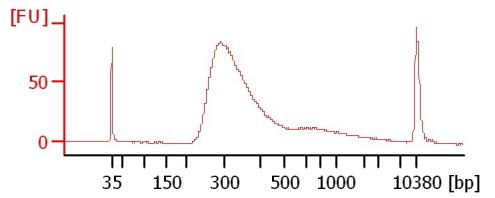
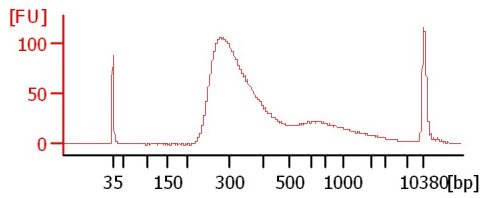
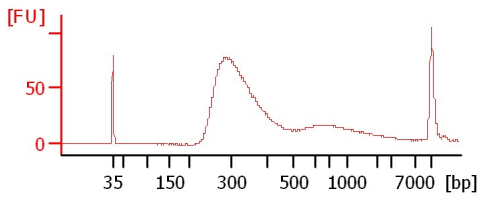
Chip Information:

Chip Lot #: Reagent Kit Lot #: Chip Comments:

sample 1

sample 2

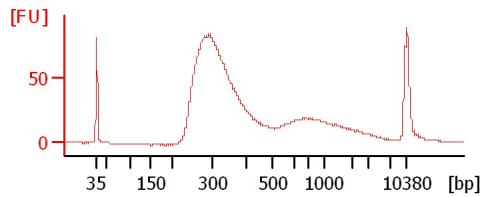
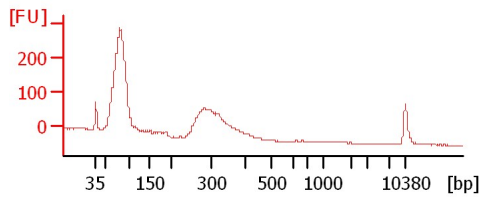
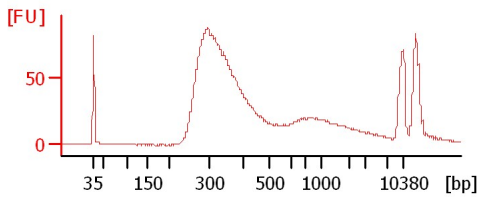
sample 3



sample 4

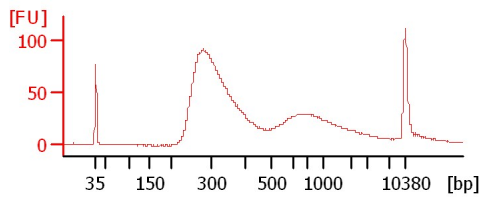
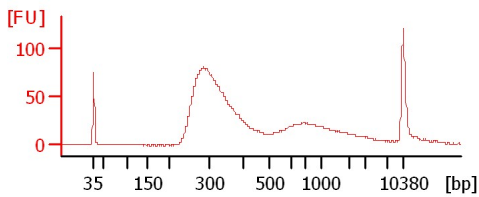
sample 5

sample 6



sample 7

sample 8



Assay Class: High Sensitivity DNA Assay
Data Path: C:\...ents and Settings\Bioanalyzer\2013-02-25\2013-02-25_001.xad

Created: 2/25/2013 11:25:32 AM
Modified: 2/25/2013 12:18:42 PM

Electrophoresis File Run Summary (Chip Summary)

Sample Name	Sample Comment	Rest. Digest	Status	Observation	Result Label	Result Color
sample 1		<input type="checkbox"/>	✓			
sample 2		<input type="checkbox"/>	✓			
sample 3		<input type="checkbox"/>	✓			
sample 4		<input type="checkbox"/>	✓			
sample 5		<input type="checkbox"/>	✓			
sample 6		<input type="checkbox"/>	✓			
sample 7		<input type="checkbox"/>	✓			
sample 8		<input type="checkbox"/>	✓			
sample 9		<input type="checkbox"/>				
sample 10		<input type="checkbox"/>				
sample 11		<input type="checkbox"/>				
Ladder		<input type="checkbox"/>	✓			

Chip Lot #

Reagent Kit Lot #

Chip Comments :

Assay Class: High Sensitivity DNA Assay
 Data Path: C:\...ents and Settings\Bioanalyzer\2013-02-25\2013-02-25_001.xad

Created: 2/25/2013 11:25:32 AM
 Modified: 2/25/2013 12:18:42 PM

Electrophoresis Assay Details

General Analysis Settings

Number of Available Sample and Ladder Wells (Max.) : 12
 Minimum Visible Range [s] : 32
 Maximum Visible Range [s] : 138
 Start Analysis Time Range [s] : 33
 End Analysis Time Range [s] : 137.5
 Ladder Concentration [pg/μl] : 1950
 Uses Standard Area for Ladder Fragments
 Lower Marker Concentration [pg/μl] : 125
 Upper Marker Concentration [pg/μl] : 75
 Used Upper Marker for Quantitation
 Standard Curve Fit is Point to Point
 Show Data Aligned to Lower and Upper Marker

Integrator Settings

Integration Start Time [s] : 33.05
 Integration End Time [s] : 137
 Slope Threshold : 0.8
 Height Threshold [FU] : 5
 Area Threshold : 0.1
 Width Threshold [s] : 0.6
 Baseline Plateau [s] : 0.5

Filter Settings

Filter Width [s] : 0.5
 Polynomial Order : 4

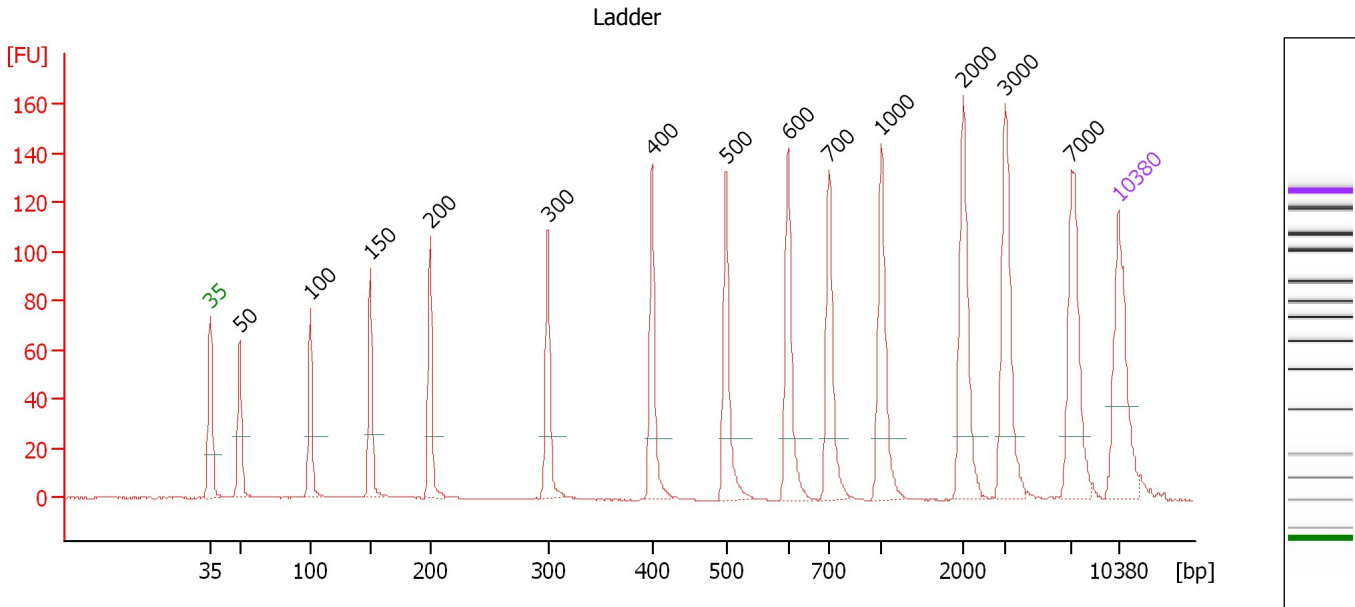
Ladder

Ladder Peak	Size	Area
1	35	160
2	50	210
3	100	208
4	150	221
5	200	242
6	300	270
7	400	305
8	500	306
9	600	336
10	700	321
11	1000	366
12	2000	413
13	3000	411
14	7000	400
15	10380	214

Assay Class: High Sensitivity DNA Assay
 Data Path: C:\...ents and Settings\Bioanalyzer\2013-02-25\2013-02-25_001.xad

Created: 2/25/2013 11:25:32 AM
 Modified: 2/25/2013 12:18:42 PM

Electropherogram Summary



Overall Results for Ladder

Noise: 0.1

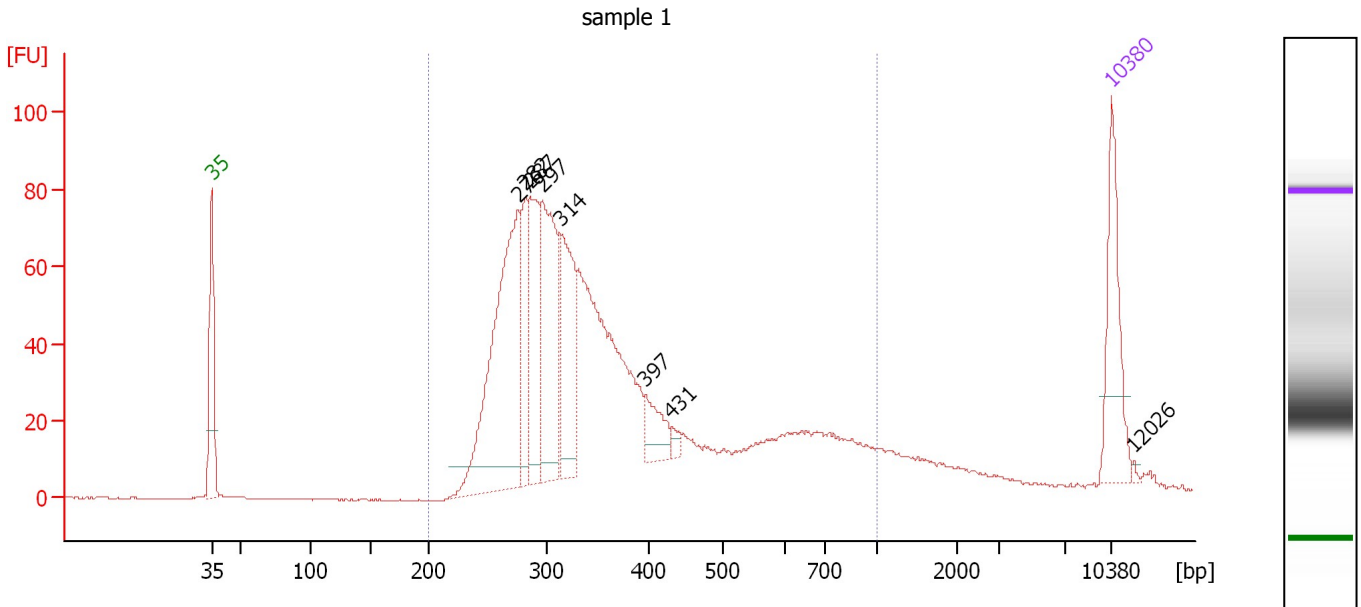
Peak table for Ladder

Peak	Size [bp]	Conc. [pg/μl]	Molarity [pmol/l]	Observations
1	35	125.00	5,411.3	Lower Marker
2	50	150.00	4,545.5	Ladder Peak
3	100	150.00	2,272.7	Ladder Peak
4	150	150.00	1,515.2	Ladder Peak
5	200	150.00	1,136.4	Ladder Peak
6	300	150.00	757.6	Ladder Peak
7	400	150.00	568.2	Ladder Peak
8	500	150.00	454.5	Ladder Peak
9	600	150.00	378.8	Ladder Peak
10	700	150.00	324.7	Ladder Peak
11	1,000	150.00	227.3	Ladder Peak
12	2,000	150.00	113.6	Ladder Peak
13	3,000	150.00	75.8	Ladder Peak
14	7,000	150.00	32.5	Ladder Peak
15	10,380	75.00	10.9	Upper Marker

Assay Class: High Sensitivity DNA Assay
 Data Path: C:\...ents and Settings\Bioanalyzer\2013-02-25\2013-02-25_001.xad

Created: 2/25/2013 11:25:32 AM
 Modified: 2/25/2013 12:18:42 PM

Electropherogram Summary Continued ...



Overall Results for sample 1 : sample 1

Number of peaks found: 8 Corr. Area 1: 1,407.4
 Noise: 0.1

Peak table for sample 1 : sample 1

Peak	Size [bp]	Conc. [pg/μl]	Molarity [pmol/l]	Observations
1	35	125.00	5,411.3	Lower Marker
2	276	353.20	1,938.5	
3	282	93.06	499.2	
4	287	135.62	717.1	
5	297	196.26	1,001.0	
6	314	142.99	689.4	
7	397	42.06	160.7	
8	431	8.02	28.2	
9	10,380	75.00	10.9	Upper Marker
10	12,026	0.00	0.0	

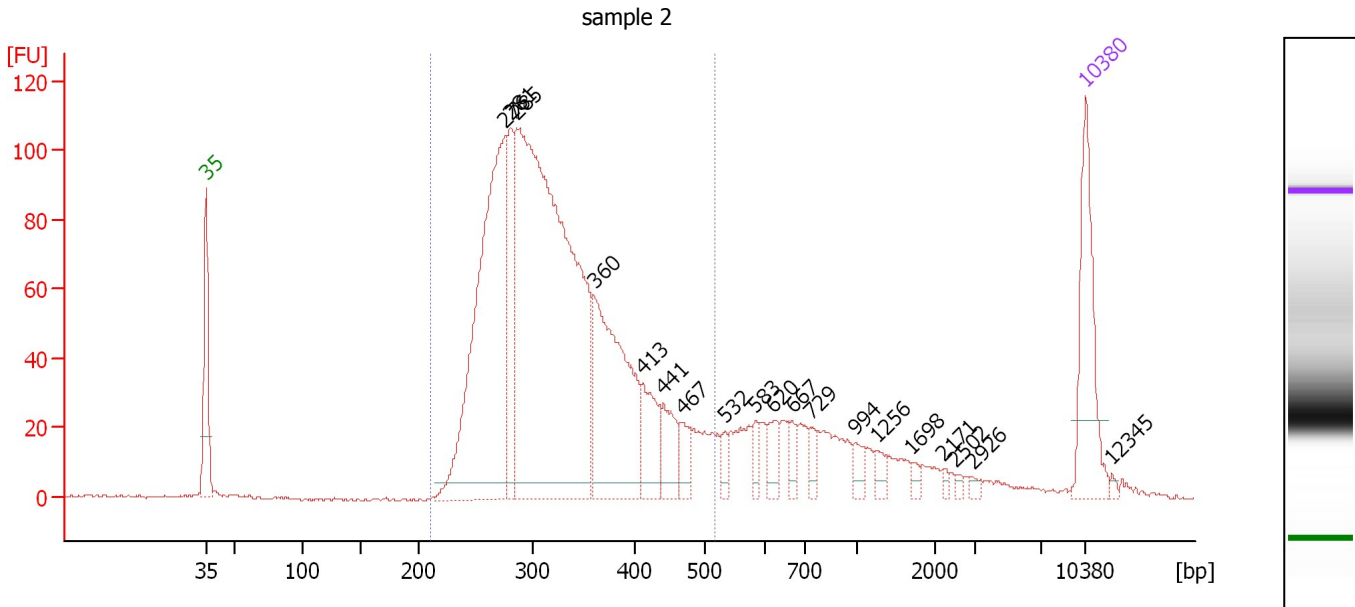
Region table for sample 1 : sample 1

From [bp]	To [bp]	Average Size [bp]	Molarity [pmol/l]	Conc. [pg/μl]	Corr. Area	% of Total	Size distribution in CV [%]	Color
200	1,000	384	7,663.1	1,683.31	1,407.4	94	39.5	Blue

Assay Class: High Sensitivity DNA Assay
 Data Path: C:\...ents and Settings\Bioanalyzer\2013-02-25\2013-02-25_001.xad

Created: 2/25/2013 11:25:32 AM
 Modified: 2/25/2013 12:18:42 PM

Electropherogram Summary Continued ...



Overall Results for sample 2 : sample 2

Number of peaks found: 19 Corr. Area 1: 1,777.1
 Noise: 0.4

Peak table for sample 2 : sample 2

Peak	Size [bp]	Conc. [pg/μl]	Molarity [pmol/l]	Observations
1	35	125.00	5,411.3	Lower Marker
2	276	438.62	2,411.6	
3	281	90.96	491.0	
4	285	812.50	4,313.7	
5	360	218.82	920.5	
6	413	55.37	203.0	
7	441	37.82	129.8	
8	467	21.96	71.3	
9	532	11.52	32.8	
10	583	12.38	32.2	
11	620	20.11	49.2	
12	667	11.23	25.5	
13	729	10.25	21.3	
14	994	11.86	18.1	
15	1,256	9.23	11.1	
16	1,698	4.98	4.4	
17	2,171	3.12	2.2	
18	2,502	2.92	1.8	
19	2,926	3.39	1.8	
20	10,380	75.00	10.9	Upper Marker
21	12,345	0.00	0.0	

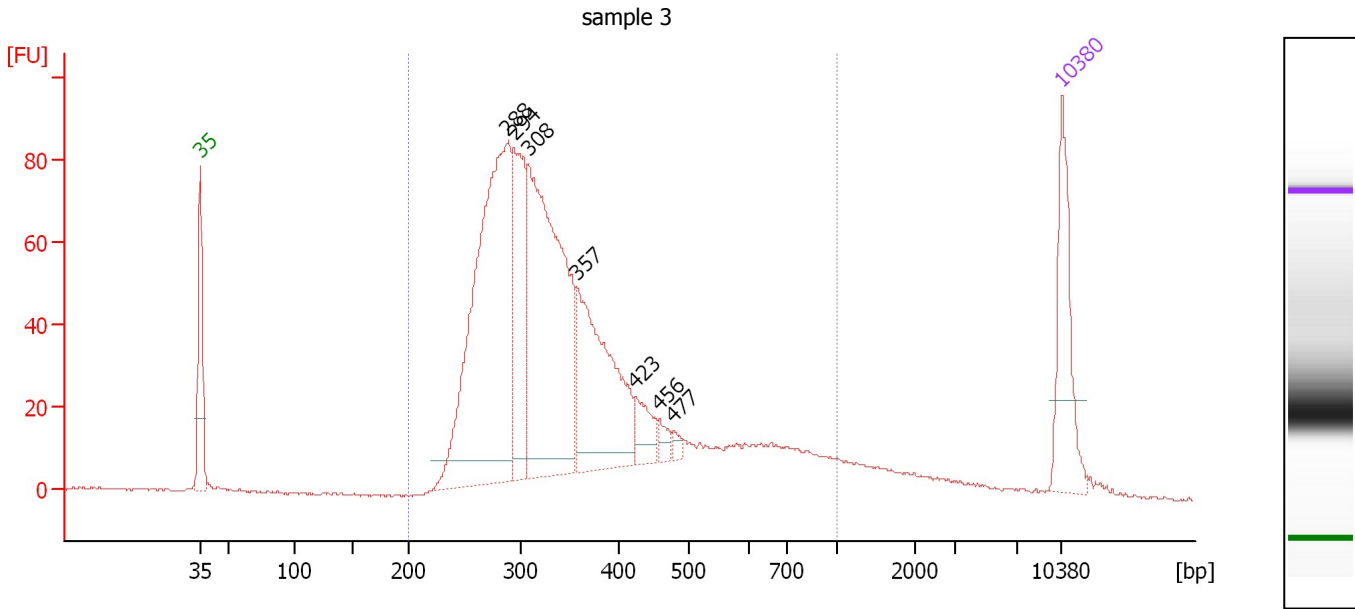
Region table for sample 2 : sample 2

From [bp]	To [bp]	Average Size [bp]	Molarity [pmol/l]	Conc. [pg/μl]	Corr. Area	% of Total	Size distribution in CV [%]	Color
210	516	327	8,037.7	1,655.18	1,777.1	81	19.3	Blue

Assay Class: High Sensitivity DNA Assay
 Data Path: C:\...ents and Settings\Bioanalyzer\2013-02-25\2013-02-25_001.xad

Created: 2/25/2013 11:25:32 AM
 Modified: 2/25/2013 12:18:42 PM

Electropherogram Summary Continued ...



Overall Results for sample 3 : sample 3

Number of peaks found: 7 Corr. Area 1: 1,511.9
 Noise: 0.3

Peak table for sample 3 : sample 3

Peak	Size [bp]	Conc. [pg/μl]	Molarity [pmol/l]	Observations
1	35	125.00	5,411.3	Lower Marker
2	288	516.17	2,717.8	
3	294	165.57	853.4	
4	308	423.17	2,083.4	
5	357	216.73	920.0	
6	423	34.58	123.9	
7	456	12.04	40.0	
8	477	7.34	23.3	
9	10,380	75.00	10.9	Upper Marker

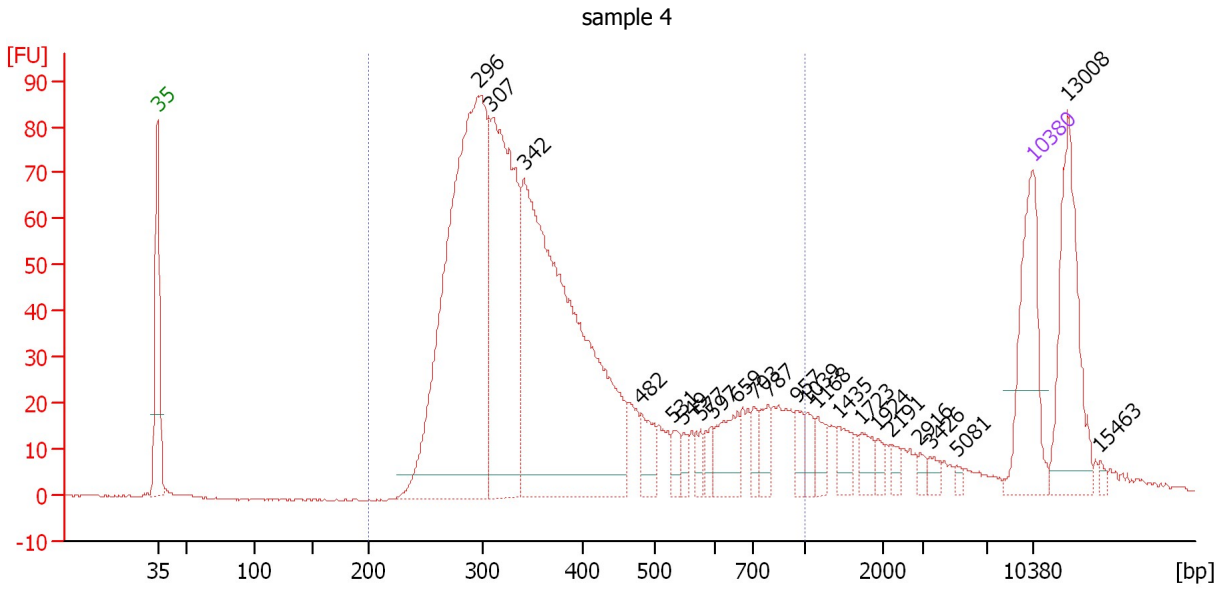
Region table for sample 3 : sample 3

From [bp]	To [bp]	Average Size [bp]	Molarity [pmol/l]	Conc. [pg/μl]	Corr. Area	% of Total	Size distribution in CV [%]	Color
200	1,000	373	7,642.9	1,667.55	1,511.9	94	36.5	Blue

Assay Class: High Sensitivity DNA Assay
 Data Path: C:\...ents and Settings\Bioanalyzer\2013-02-25\2013-02-25_001.xad

Created: 2/25/2013 11:25:32 AM
 Modified: 2/25/2013 12:18:42 PM

Electropherogram Summary Continued ...



Overall Results for sample 4 : sample 4

Number of peaks found: 23 Corr. Area 1: 1,528.4
 Noise: 0.3

Peak table for sample 4 : sample 4

Peak	Size [bp]	Conc. [pg/μl]	Molarity [pmol/l]	Observations
1	35	125.00	5,411.3	Lower Marker
2	296	565.34	2,893.6	
3	307	318.13	1,570.8	
4	342	549.88	2,439.3	
5	482	26.48	83.3	
6	531	13.58	38.7	
7	549	9.22	25.5	
8	577	10.45	27.4	
9	597	11.33	28.7	
10	659	37.01	85.1	
11	703	13.86	29.9	
12	787	17.76	34.2	
13	957	13.84	21.9	
14	1,039	12.23	17.8	
15	1,168	12.88	16.7	
16	1,435	14.05	14.8	
17	1,723	13.47	11.8	
18	1,924	6.12	4.8	
19	2,191	6.51	4.5	
20	2,916	4.84	2.5	
21	3,426	5.91	2.6	
22	5,081	3.00	0.9	
23	10,380	75.00	10.9	Upper Marker
24	13,008	0.00	0.0	
25	15,463	0.00	0.0	

Assay Class: High Sensitivity DNA Assay
Data Path: C:\...ents and Settings\Bioanalyzer\2013-02-25\2013-02-25_001.xad

Created: 2/25/2013 11:25:32 AM
Modified: 2/25/2013 12:18:42 PM

Electropherogram Summary Continued ...

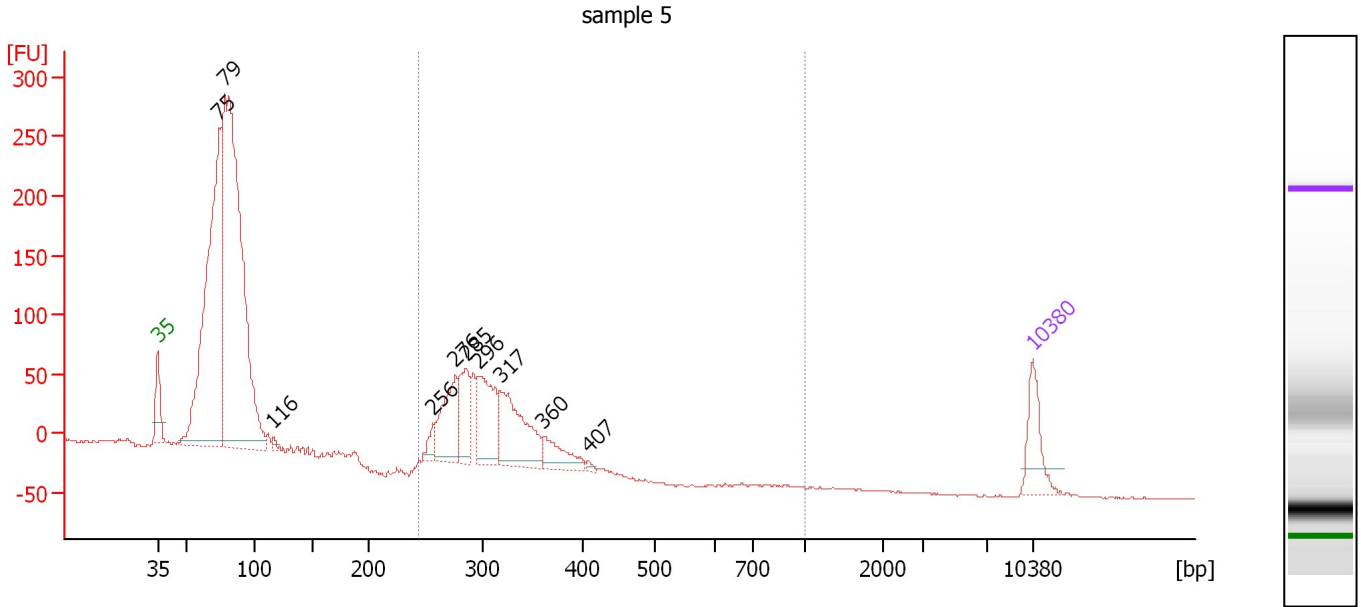
... Region table for sample 4 : sample 4

From [bp]	To [bp]	Average Size [bp]	Molarity [pmol/l]	Conc. [pg/μl]	Corr. Area	% of Total	Size distribution in CV [%]	Color
200	1,000	398	7,085.3	1,620.83	1,528.4	84	39.1	■

Assay Class: High Sensitivity DNA Assay
 Data Path: C:\...ents and Settings\Bioanalyzer\2013-02-25\2013-02-25_001.xad

Created: 2/25/2013 11:25:32 AM
 Modified: 2/25/2013 12:18:42 PM

Electropherogram Summary Continued ...



Overall Results for sample 5 : sample 5

Number of peaks found: 10 Corr. Area 1: 759.6
 Noise: 0.5

Peak table for sample 5 : sample 5

Peak	Size [bp]	Conc. [pg/μl]	Molarity [pmol/l]	Observations
1	35	125.00	5,411.3	Lower Marker
2	75	1,051.68	21,319.8	
3	79	1,540.36	29,586.5	
4	116	10.97	142.7	
5	256	33.46	198.0	
6	276	157.54	865.2	
7	285	119.50	634.6	
8	296	181.19	926.9	
9	317	228.39	1,091.7	
10	360	77.10	324.4	
11	407	6.62	24.6	
12	10,380	75.00	10.9	Upper Marker

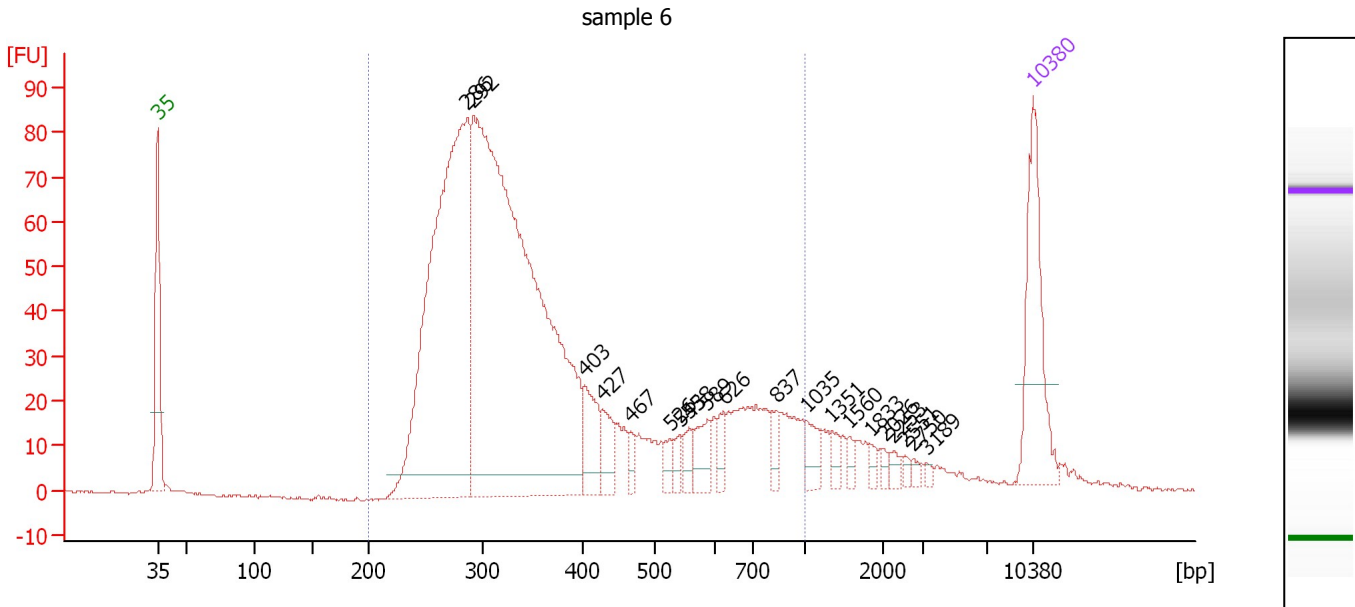
Region table for sample 5 : sample 5

From [bp]	To [bp]	Average Size [bp]	Molarity [pmol/l]	Conc. [pg/μl]	Corr. Area	% of Total	Size distribution in CV [%]	Color
244	1,000	306	3,780.8	754.82	759.6	28	10.7	Blue

Assay Class: High Sensitivity DNA Assay
 Data Path: C:\...ents and Settings\Bioanalyzer\2013-02-25\2013-02-25_001.xad

Created: 2/25/2013 11:25:32 AM
 Modified: 2/25/2013 12:18:42 PM

Electropherogram Summary Continued ...



Overall Results for sample 6 : sample 6

Number of peaks found: 20 Corr. Area 1: 1,496.4
 Noise: 0.4

Peak table for sample 6 : sample 6

Peak	Size [bp]	Conc. [pg/μl]	Molarity [pmol/l]	Observations
1	35	125.00	5,411.3	Lower Marker
2	286	536.61	2,841.5	
3	292	859.74	4,466.5	
4	403	41.78	157.3	
5	427	25.45	90.2	
6	467	10.29	33.4	
7	526	10.94	31.5	
8	543	8.62	24.1	
9	558	12.20	33.1	
10	589	22.42	57.6	
11	626	12.73	30.8	
12	837	12.12	21.9	
13	1,035	15.28	22.4	
14	1,351	8.71	9.8	
15	1,560	5.44	5.3	
16	1,833	5.02	4.1	
17	2,026	4.34	3.2	
18	2,253	4.78	3.2	
19	2,551	3.22	1.9	
20	2,750	3.73	2.1	
21	3,189	2.82	1.3	
22	10,380	75.00	10.9	Upper Marker

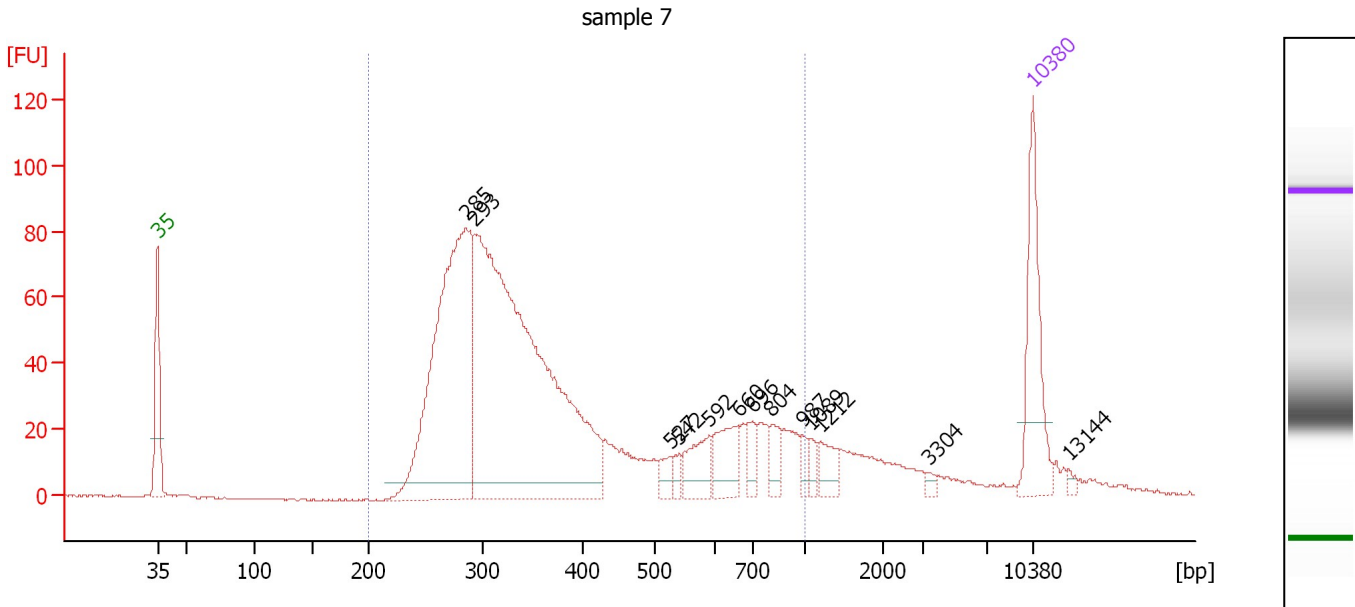
Region table for sample 6 : sample 6

From [bp]	To [bp]	Average Size [bp]	Molarity [pmol/l]	Conc. [pg/μl]	Corr. Area	% of Total	Size distribution in CV [%]	Color
200	1,000	387	7,401.1	1,616.80	1,496.4	91	41.5	Blue

Assay Class: High Sensitivity DNA Assay
 Data Path: C:\...ents and Settings\Bioanalyzer\2013-02-25\2013-02-25_001.xad

Created: 2/25/2013 11:25:32 AM
 Modified: 2/25/2013 12:18:42 PM

Electropherogram Summary Continued ...



Overall Results for sample 7 : sample 7

Number of peaks found: 13 Corr. Area 1: 1,424.8
 Noise: 0.3

Peak table for sample 7 : sample 7

Peak	Size [bp]	Conc. [pg/μl]	Molarity [pmol/l]	Observations
1	35	125.00	5,411.3	Lower Marker
2	285	441.77	2,347.0	
3	293	742.55	3,843.3	
4	527	14.42	41.5	
5	542	9.22	25.8	
6	592	36.94	94.5	
7	660	41.49	95.2	
8	696	16.82	36.6	
9	804	18.68	35.2	
10	987	9.51	14.6	
11	1,089	8.73	12.1	
12	1,212	19.30	24.1	
13	3,304	4.09	1.9	
14	10,380	75.00	10.9	Upper Marker
15	13,144	0.00	0.0	

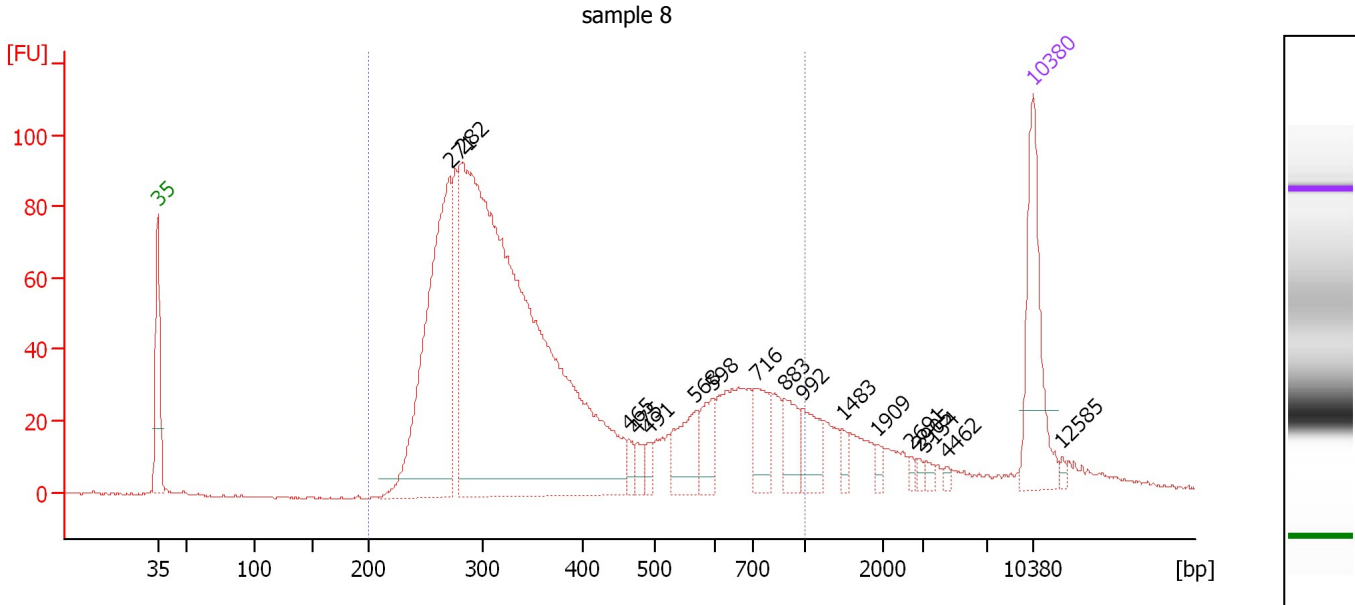
Region table for sample 7 : sample 7

From [bp]	To [bp]	Average Size [bp]	Molarity [pmol/l]	Conc. [pg/μl]	Corr. Area	% of Total	Size distribution in CV [%]	Color
200	1,000	402	6,025.3	1,346.25	1,424.8	89	42.6	Blue

Assay Class: High Sensitivity DNA Assay
 Data Path: C:\...ents and Settings\Bioanalyzer\2013-02-25\2013-02-25_001.xad

Created: 2/25/2013 11:25:32 AM
 Modified: 2/25/2013 12:18:42 PM

Electropherogram Summary Continued ...



Overall Results for sample 8 : sample 8

Number of peaks found: 17 Corr. Area 1: 1,687.0
 Noise: 0.4

Peak table for sample 8 : sample 8

Peak	Size [bp]	Conc. [pg/μl]	Molarity [pmol/l]	Observations
1	35	125.00	5,411.3	Lower Marker
2	271	326.09	1,823.6	
3	282	1,009.65	5,424.3	
4	465	9.70	31.6	
5	475	12.64	40.3	
6	491	9.18	28.3	
7	568	44.06	117.4	
8	598	30.56	77.4	
9	716	37.11	78.5	
10	883	29.21	50.1	
11	992	28.53	43.5	
12	1,483	7.13	7.3	
13	1,909	5.36	4.3	
14	2,691	3.55	2.0	
15	2,905	3.28	1.7	
16	3,154	3.84	1.8	
17	4,462	2.90	1.0	
18	10,380	75.00	10.9	Upper Marker
19	12,585	0.00	0.0	

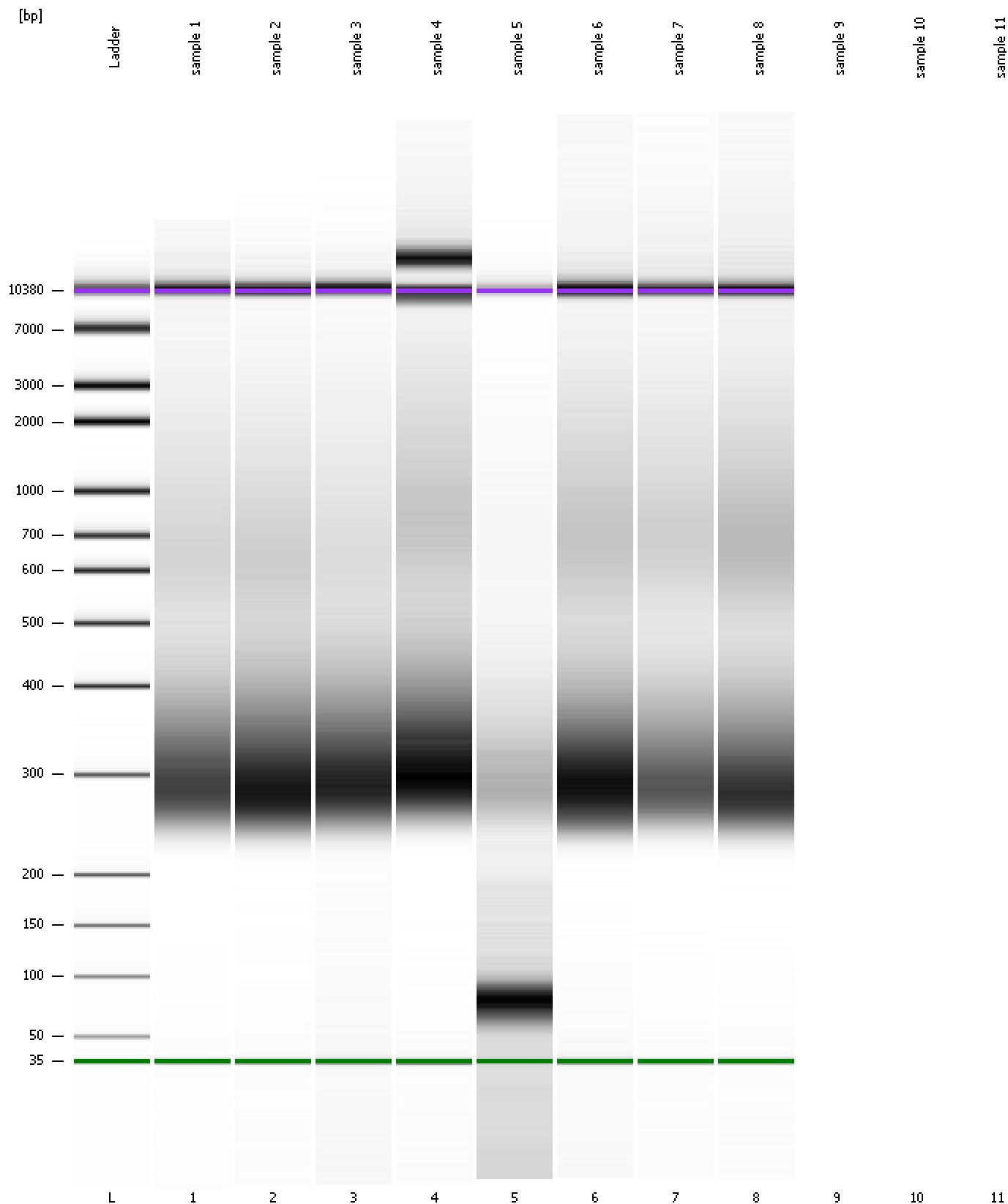
Region table for sample 8 : sample 8

From [bp]	To [bp]	Average Size [bp]	Molarity [pmol/l]	Conc. [pg/μl]	Corr. Area	% of Total	Size distribution in CV [%]	Color
200	1,000	407	6,869.2	1,529.59	1,687.0	89	43.5	Blue

Assay Class: High Sensitivity DNA Assay
Data Path: C:\...ents and Settings\Bioanalyzer\2013-02-25\2013-02-25_001.xad

Created: 2/25/2013 11:25:32 AM
Modified: 2/25/2013 12:18:42 PM

Gel Image



Assay Class: High Sensitivity DNA Assay
Data Path: C:\...ents and Settings\Bioanalyzer\2013-02-25\2013-02-25_001.xad

Created: 2/25/2013 11:25:32 AM
Modified: 2/25/2013 12:18:42 PM

Invalid Samples

Sample 9 has not been run, no results available.

Sample 10 has not been run, no results available.

Sample 11 has not been run, no results available.

Assay Class: High Sensitivity DNA Assay
 Data Path: C:\...ents and Settings\Bioanalyzer\2013-02-25\2013-02-25_001.xad

Created: 2/25/2013 11:25:32 AM
 Modified: 2/25/2013 12:18:42 PM

Run Logbook

Description	Number	Source	Category	Sub Category	Time	Time Zone	User	Host
Run ended on port 1 (Number of wells acquired: 9)		Instrument	Run		2/25/2013 11:58:17 AM	(GMT --08:00) Pacific Standard Time	UC Davis	D8XSMGH1
Run started on port 1 (File: C:\Documents and Settings\Bioanalyzer\2013-02-25\2013-02-25_001.xad)		Instrument	Run		2/25/2013 11:25:38 AM	(GMT --08:00) Pacific Standard Time	UC Davis	D8XSMGH1
Product Number : G2938B		Instrument	Run		2/25/2013 11:25:38 AM	(GMT --08:00) Pacific Standard Time	UC Davis	D8XSMGH1
Name :		Instrument	Run		2/25/2013 11:25:38 AM	(GMT --08:00) Pacific Standard Time	UC Davis	D8XSMGH1
Vendor : Agilent Technologies		Instrument	Run		2/25/2013 11:25:38 AM	(GMT --08:00) Pacific Standard Time	UC Davis	D8XSMGH1
Serial# : DE13701086		Instrument	Run		2/25/2013 11:25:38 AM	(GMT --08:00) Pacific Standard Time	UC Davis	D8XSMGH1
Firmware : C.01.069		Instrument	Run		2/25/2013 11:25:38 AM	(GMT --08:00) Pacific Standard Time	UC Davis	D8XSMGH1
Cartridge : Electrode		Instrument	Run		2/25/2013 11:25:38 AM	(GMT --08:00) Pacific Standard Time	UC Davis	D8XSMGH1