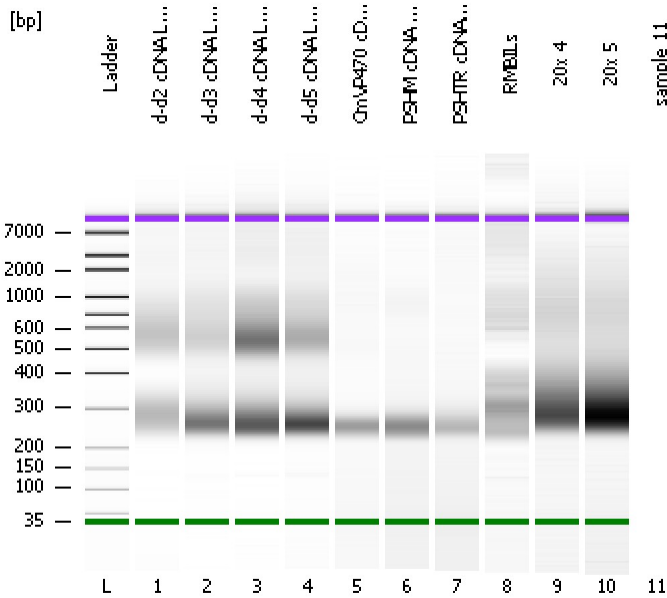


Assay Class: High Sensitivity DNA Assay
Data Path: C:\...ents and Settings\Bioanalyzer\2013-02-25\2013-02-25_002.xad

Created: 2/25/2013 4:43:48 PM
Modified: 2/25/2013 5:24:49 PM

Electrophoresis File Run Summary



Instrument Information:

Instrument Name: DE13701086 Firmware: C.01.069
Serial#: DE13701086 Type: G2938B

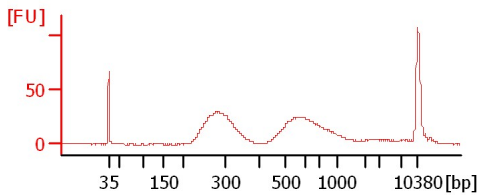
Assay Information:

Assay Origin Path: C:\Program Files\Agilent\2100 bioanalyzer\2100 expert\assays\dsDNA\High Sensitivity DNA.xsy
Assay Class: High Sensitivity DNA Assay
Version: 1.03
Assay Comments: Copyright © 2003-2010 Agilent Technologies

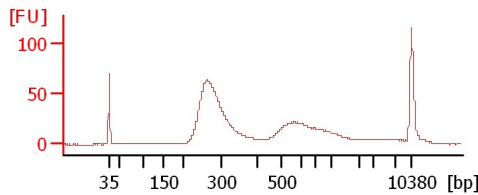
Chip Information:

Chip Lot #:
Reagent Kit Lot #:
Chip Comments:

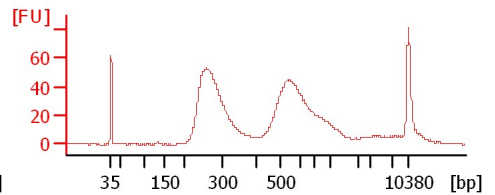
d-d2 cDNA Lib 1:3



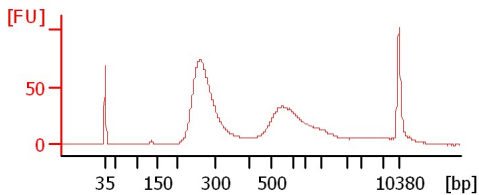
d-d3 cDNA Lib 1:3



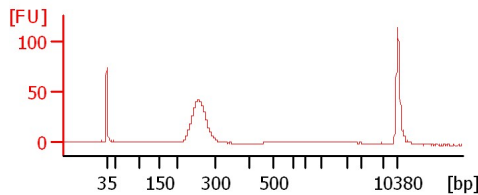
d-d4 cDNA Lib 1:3



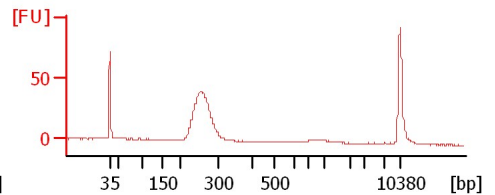
d-d5 cDNA Lib 1:3



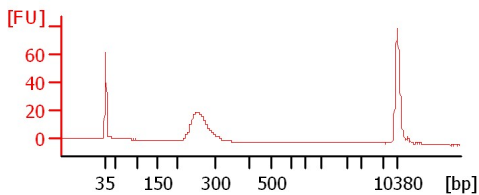
CmVP470 cDNA Lib 1:3



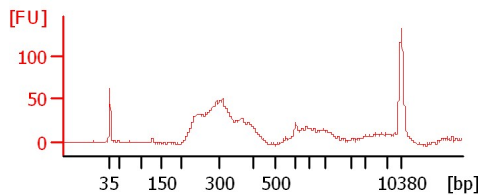
PSHM cDNA Lib 1:2



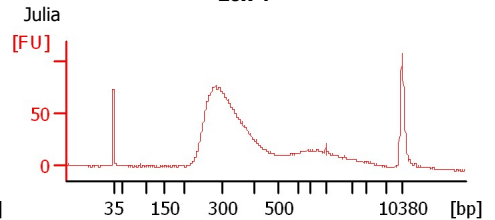
PSHTR cDNA Lib 1:2



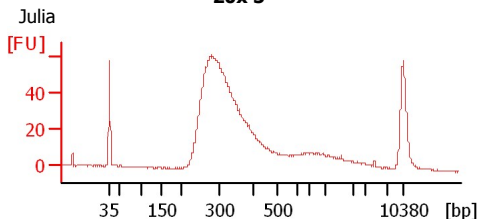
RMBILs



20x 4



20x 5



Assay Class: High Sensitivity DNA Assay
Data Path: C:\...ents and Settings\Bioanalyzer\2013-02-25\2013-02-25_002.xad

Created: 2/25/2013 4:43:48 PM
Modified: 2/25/2013 5:24:49 PM

Electrophoresis File Run Summary (Chip Summary)

Sample Name	Sample Comment	Rest. Digest	Status	Observation	Result Label	Result Color
d-d2 cDNA Lib 1:3		<input type="checkbox"/>	✓			
d-d3 cDNA Lib 1:3		<input type="checkbox"/>	✓			
d-d4 cDNA Lib 1:3		<input type="checkbox"/>	✓			
d-d5 cDNA Lib 1:3		<input type="checkbox"/>	✓			
CmVP470 cDNA Lib 1:3		<input type="checkbox"/>	✓			
PSHM cDNA Lib 1:2		<input type="checkbox"/>	✓			
PSHTR cDNA Lib 1:2		<input type="checkbox"/>	✓			
RMBILs		<input type="checkbox"/>	✓			
20x 4	Julia	<input type="checkbox"/>	✓			
20x 5	Julia	<input type="checkbox"/>	✓			
sample 11		<input type="checkbox"/>				
Ladder		<input type="checkbox"/>	✓			

Chip Lot #

Reagent Kit Lot #

Chip Comments :

Assay Class: High Sensitivity DNA Assay
Data Path: C:\...ents and Settings\Bioanalyzer\2013-02-25\2013-02-25_002.xad

Created: 2/25/2013 4:43:48 PM
Modified: 2/25/2013 5:24:49 PM

Electrophoresis Assay Details

General Analysis Settings

Number of Available Sample and Ladder Wells (Max.) : 12
Minimum Visible Range [s] : 32
Maximum Visible Range [s] : 138
Start Analysis Time Range [s] : 33
End Analysis Time Range [s] : 137.5
Ladder Concentration [pg/μl] : 1950
Uses Standard Area for Ladder Fragments
Lower Marker Concentration [pg/μl] : 125
Upper Marker Concentration [pg/μl] : 75
Used Upper Marker for Quantitation
Standard Curve Fit is Point to Point
Show Data Aligned to Lower and Upper Marker

Integrator Settings

Integration Start Time [s] : 33.05
Integration End Time [s] : 137
Slope Threshold : 0.8
Height Threshold [FU] : 5
Area Threshold : 0.1
Width Threshold [s] : 0.6
Baseline Plateau [s] : 0.5

Filter Settings

Filter Width [s] : 0.5
Polynomial Order : 4

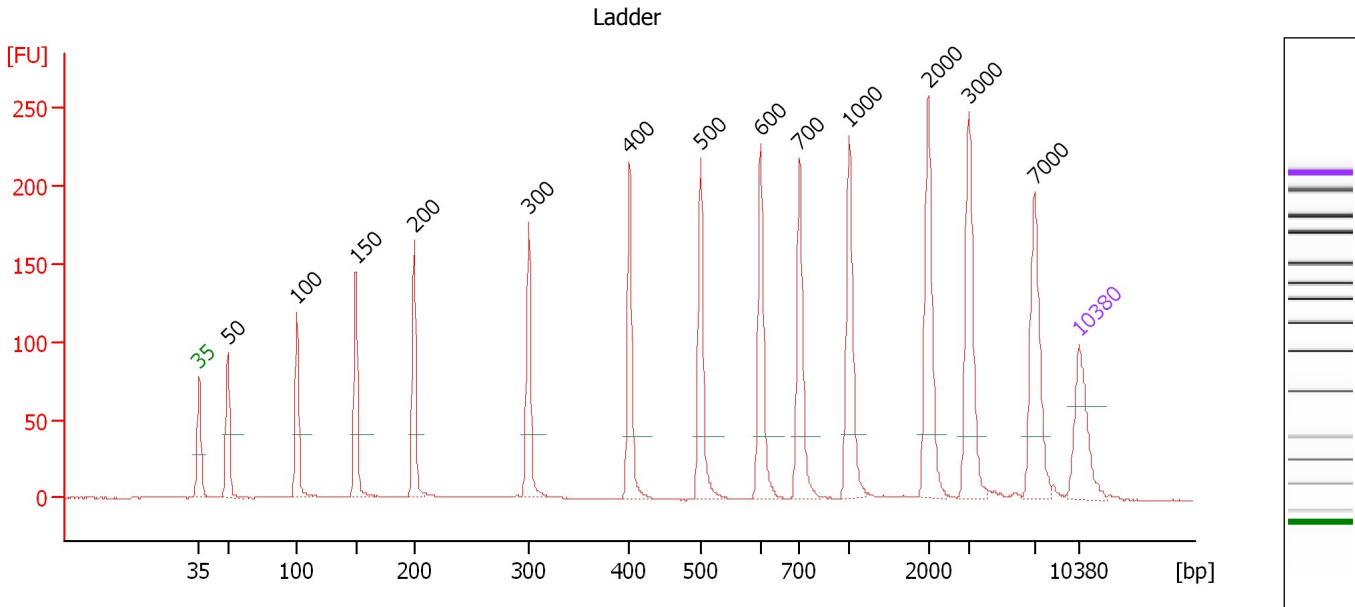
Ladder

Ladder Peak	Size	Area
1	35	160
2	50	210
3	100	208
4	150	221
5	200	242
6	300	270
7	400	305
8	500	306
9	600	336
10	700	321
11	1000	366
12	2000	413
13	3000	411
14	7000	400
15	10380	214

Assay Class: High Sensitivity DNA Assay
 Data Path: C:\...ents and Settings\Bioanalyzer\2013-02-25\2013-02-25_002.xad

Created: 2/25/2013 4:43:48 PM
 Modified: 2/25/2013 5:24:49 PM

Electropherogram Summary



Overall Results for Ladder

Noise: 0.1

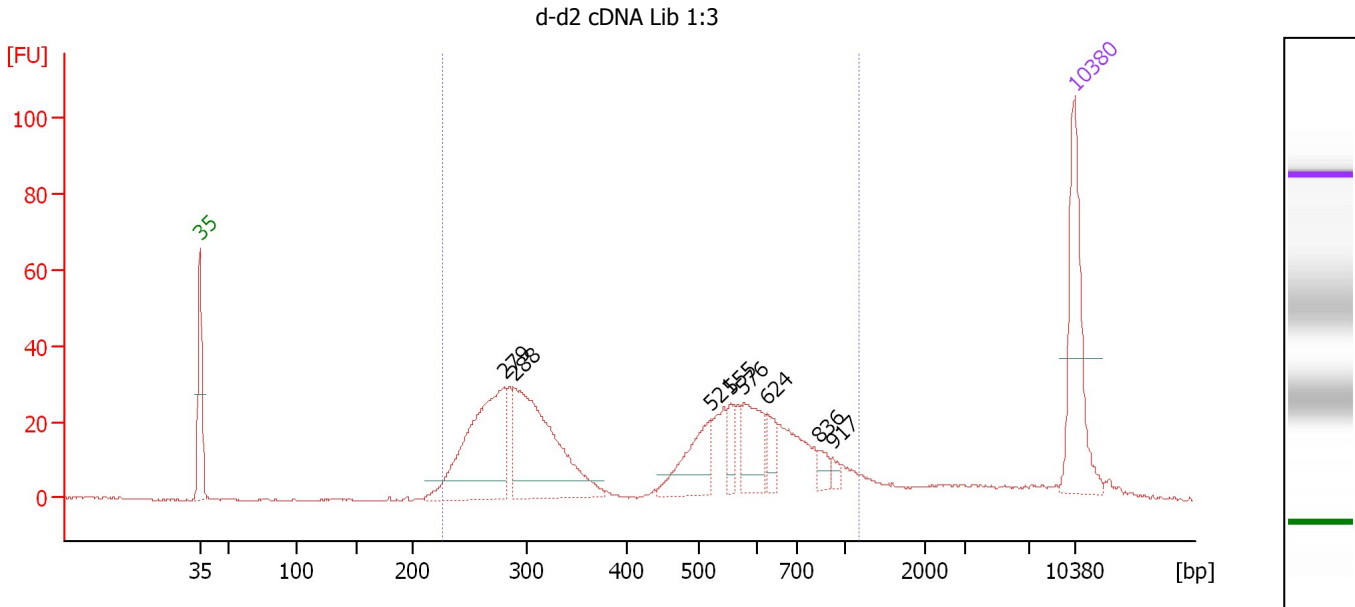
Peak table for Ladder

Peak	Size [bp]	Conc. [pg/μl]	Molarity [pmol/l]	Observations
1	35	125.00	5,411.3	Lower Marker
2	50	150.00	4,545.5	Ladder Peak
3	100	150.00	2,272.7	Ladder Peak
4	150	150.00	1,515.2	Ladder Peak
5	200	150.00	1,136.4	Ladder Peak
6	300	150.00	757.6	Ladder Peak
7	400	150.00	568.2	Ladder Peak
8	500	150.00	454.5	Ladder Peak
9	600	150.00	378.8	Ladder Peak
10	700	150.00	324.7	Ladder Peak
11	1,000	150.00	227.3	Ladder Peak
12	2,000	150.00	113.6	Ladder Peak
13	3,000	150.00	75.8	Ladder Peak
14	7,000	150.00	32.5	Ladder Peak
15	10,380	75.00	10.9	Upper Marker

Assay Class: High Sensitivity DNA Assay
 Data Path: C:\...ents and Settings\Bioanalyzer\2013-02-25\2013-02-25_002.xad

Created: 2/25/2013 4:43:48 PM
 Modified: 2/25/2013 5:24:49 PM

Electropherogram Summary Continued ...



Overall Results for sample 1 : d-d2 cDNA Lib 1:3

Number of peaks found: 8 Corr. Area 1: 674.6
 Noise: 0.1

Peak table for sample 1 : d-d2 cDNA Lib 1:3

Peak	Size [bp]	Conc. [pg/μl]	Molarity [pmol/l]	Observations
1	35	125.00	5,411.3	Lower Marker
2	279	180.11	977.1	
3	288	190.72	1,002.7	
4	521	54.35	158.0	
5	555	14.43	39.4	
6	576	45.53	119.7	
7	624	18.36	44.6	
8	836	9.31	16.9	
9	917	5.61	9.3	
10	10,380	75.00	10.9	Upper Marker

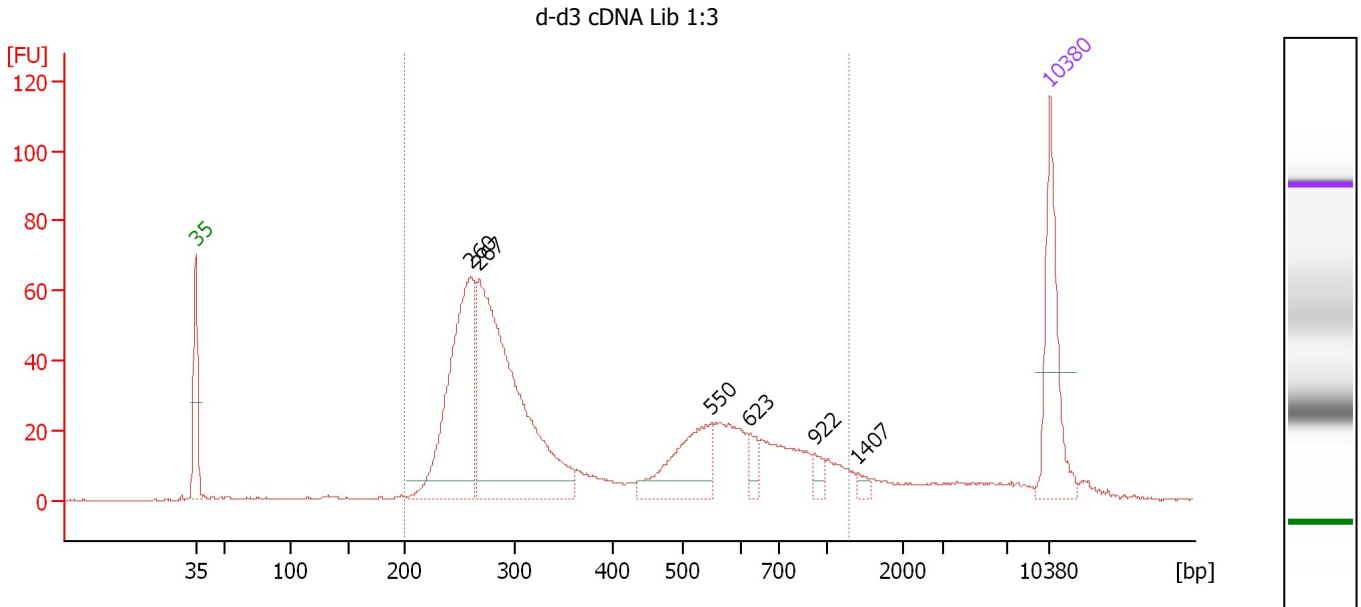
Region table for sample 1 : d-d2 cDNA Lib 1:3

From [bp]	To [bp]	Average Size [bp]	Molarity [pmol/l]	Conc. [pg/μl]	Corr. Area	% of Total	Size distribution in CV [%]	Color
225	1,166	474	2,789.9	675.95	674.6	90	42.9	Blue

Assay Class: High Sensitivity DNA Assay
 Data Path: C:\...ents and Settings\Bioanalyzer\2013-02-25\2013-02-25_002.xad

Created: 2/25/2013 4:43:48 PM
 Modified: 2/25/2013 5:24:49 PM

Electropherogram Summary Continued ...



Overall Results for sample 2 : d-d3 cDNA Lib 1:3

Number of peaks found: 6 Corr. Area 1: 986.2
 Noise: 0.2

Peak table for sample 2 : d-d3 cDNA Lib 1:3

Peak	Size [bp]	Conc. [pg/μl]	Molarity [pmol/l]	Observations
1	35	125.00	5,411.3	Lower Marker
2	260	261.62	1,523.3	
3	267	417.62	2,366.2	
4	550	86.98	239.8	
5	623	15.53	37.8	
6	922	10.62	17.5	
7	1,407	5.19	5.6	
8	10,380	75.00	10.9	Upper Marker

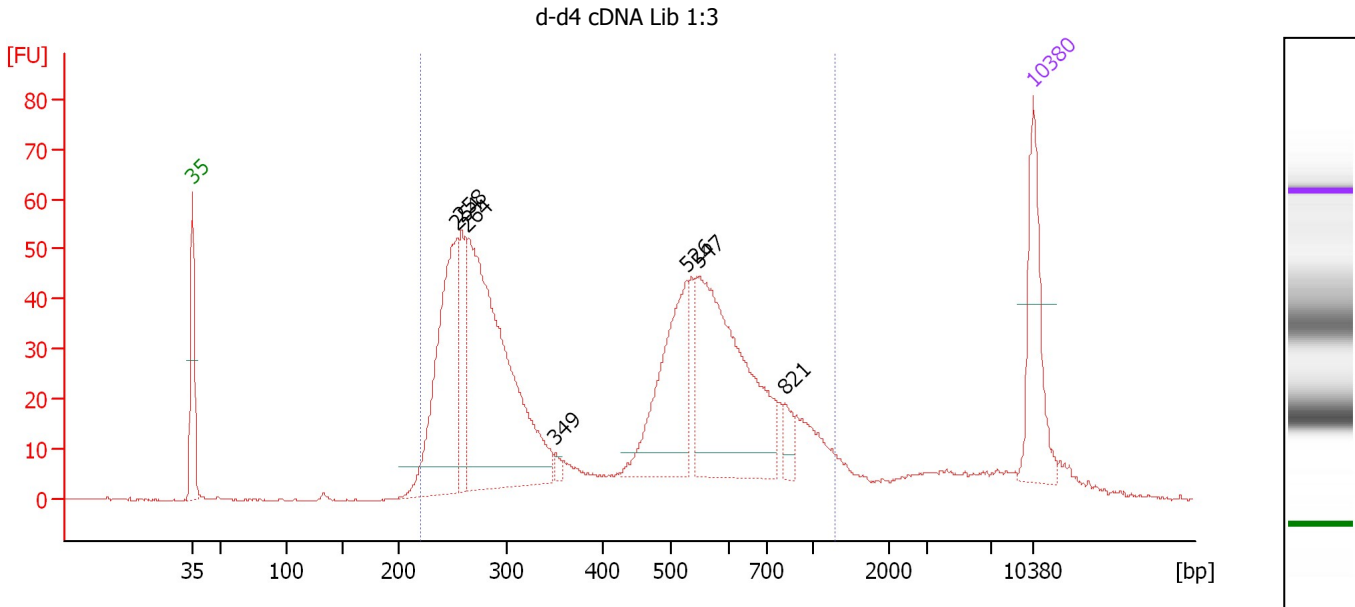
Region table for sample 2 : d-d3 cDNA Lib 1:3

From [bp]	To [bp]	Average Size [bp]	Molarity [pmol/l]	Conc. [pg/μl]	Corr. Area	% of Total	Size distribution in CV [%]	Color
200	1,297	425	4,583.5	984.36	986.2	91	51.3	Blue

Assay Class: High Sensitivity DNA Assay
 Data Path: C:\...ents and Settings\Bioanalyzer\2013-02-25\2013-02-25_002.xad

Created: 2/25/2013 4:43:48 PM
 Modified: 2/25/2013 5:24:49 PM

Electropherogram Summary Continued ...



Overall Results for sample 3 : d-d4 cDNA Lib 1:3

Number of peaks found: 7 Corr. Area 1: 1,132.2
 Noise: 0.2

Peak table for sample 3 : d-d4 cDNA Lib 1:3

Peak	Size [bp]	Conc. [pg/μl]	Molarity [pmol/l]	Observations
1	35	125.00	5,411.3	Lower Marker
2	254	250.63	1,492.6	
3	258	70.58	414.0	
4	264	451.79	2,596.2	
5	349	6.34	27.5	
6	526	154.75	445.4	
7	547	275.38	763.0	
8	821	16.60	30.6	
9	10,380	75.00	10.9	Upper Marker

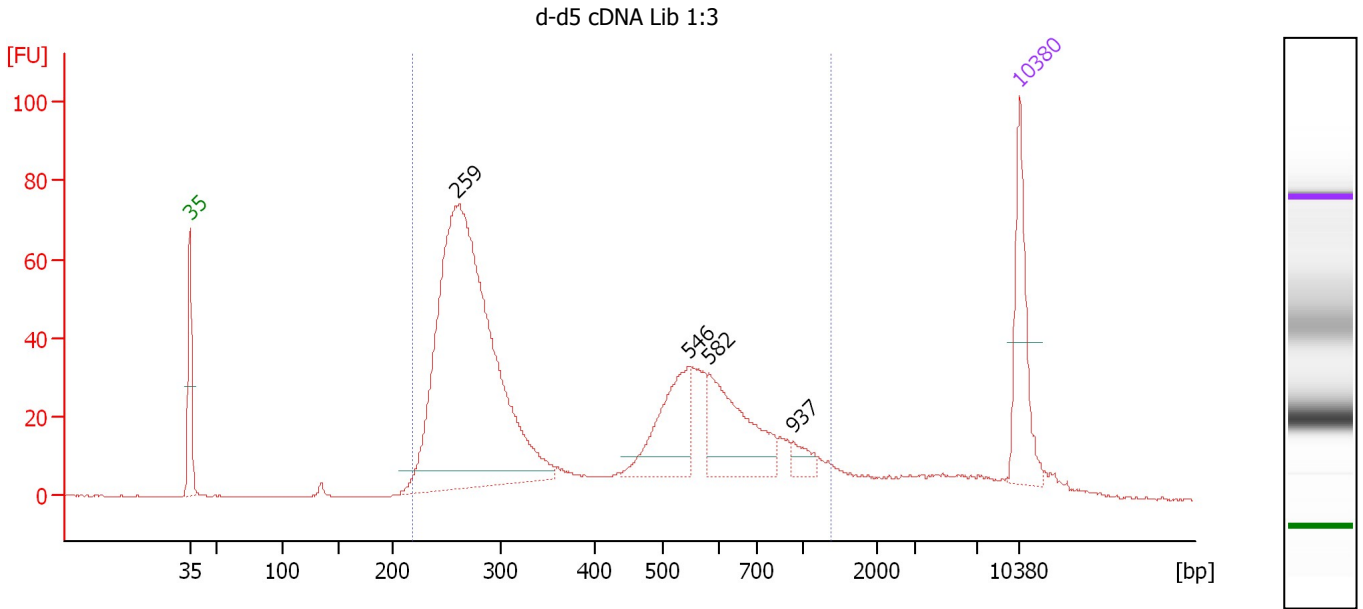
Region table for sample 3 : d-d4 cDNA Lib 1:3

From [bp]	To [bp]	Average Size [bp]	Molarity [pmol/l]	Conc. [pg/μl]	Corr. Area	% of Total	Size distribution in CV [%]	Color
221	1,288	469	6,307.0	1,485.30	1,132.2	91	45.4	Blue

Assay Class: High Sensitivity DNA Assay
 Data Path: C:\...ents and Settings\Bioanalyzer\2013-02-25\2013-02-25_002.xad

Created: 2/25/2013 4:43:48 PM
 Modified: 2/25/2013 5:24:49 PM

Electropherogram Summary Continued ...



Overall Results for sample 4 : d-d5 cDNA Lib 1:3

Number of peaks found: 4 Corr. Area 1: 1,131.9
 Noise: 0.1

Peak table for sample 4 : d-d5 cDNA Lib 1:3

Peak	Size [bp]	Conc. [pg/μl]	Molarity [pmol/l]	Observations
1	35	125.00	5,411.3	Lower Marker
2	259	844.23	4,929.2	
3	546	106.69	296.1	
4	582	122.58	319.4	
5	937	16.17	26.1	
6	10,380	75.00	10.9	Upper Marker

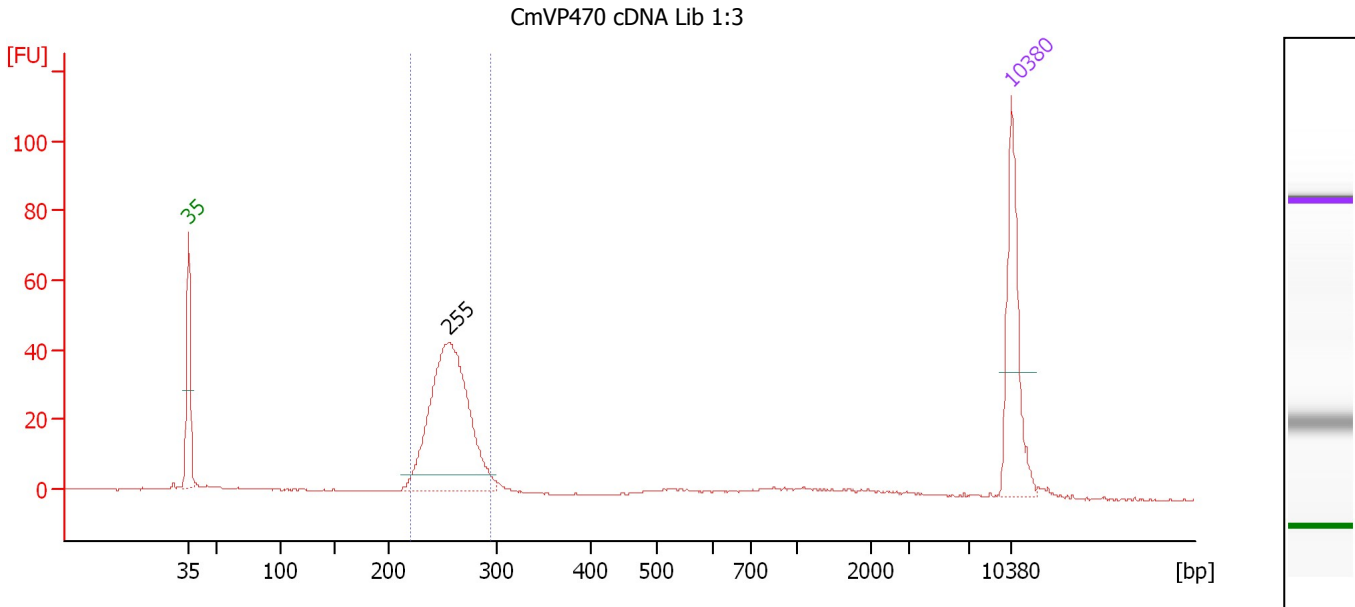
Region table for sample 4 : d-d5 cDNA Lib 1:3

From [bp]	To [bp]	Average Size [bp]	Molarity [pmol/l]	Conc. [pg/μl]	Corr. Area	% of Total	Size distribution in CV [%]	Color
218	1,380	443	6,154.1	1,356.05	1,131.9	91	51.0	Blue

Assay Class: High Sensitivity DNA Assay
 Data Path: C:\...ents and Settings\Bioanalyzer\2013-02-25\2013-02-25_002.xad

Created: 2/25/2013 4:43:48 PM
 Modified: 2/25/2013 5:24:49 PM

Electropherogram Summary Continued ...



Overall Results for sample 5 : CmVP470 cDNA Lib 1:3

Number of peaks found: 1 Corr. Area 1: 270.6
 Noise: 0.2

Peak table for sample 5 : CmVP470 cDNA Lib 1:3

Peak	Size [bp]	Conc. [pg/μl]	Molarity [pmol/l]	Observations
1	35	125.00	5,411.3	Lower Marker
2	255	303.73	1,802.7	
3	10,380	75.00	10.9	Upper Marker

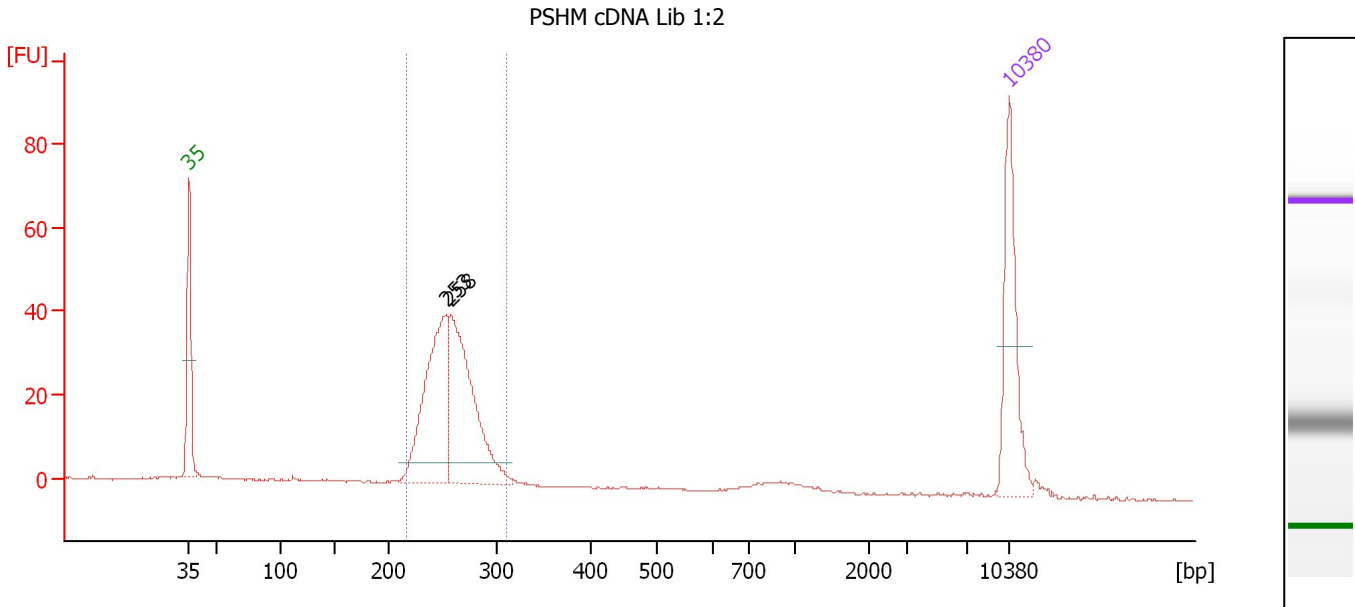
Region table for sample 5 : CmVP470 cDNA Lib 1:3

From [bp]	To [bp]	Average Size [bp]	Molarity [pmol/l]	Conc. [pg/μl]	Corr. Area	% of Total	Size distribution in CV [%]	Color
219	294	256	1,782.1	301.26	270.6	76	6.2	Blue

Assay Class: High Sensitivity DNA Assay
 Data Path: C:\...ents and Settings\Bioanalyzer\2013-02-25\2013-02-25_002.xad

Created: 2/25/2013 4:43:48 PM
 Modified: 2/25/2013 5:24:49 PM

Electropherogram Summary Continued ...



Overall Results for sample 6 : PSHM cDNA Lib 1:2

Number of peaks found: 2 Corr. Area 1: 306.5
 Noise: 0.1

Peak table for sample 6 : PSHM cDNA Lib 1:2

Peak	Size [bp]	Conc. [pg/μl]	Molarity [pmol/l]	Observations
1	35	125.00	5,411.3	Lower Marker
2	253	185.68	1,111.7	
3	258	194.07	1,141.7	
4	10,380	75.00	10.9	Upper Marker

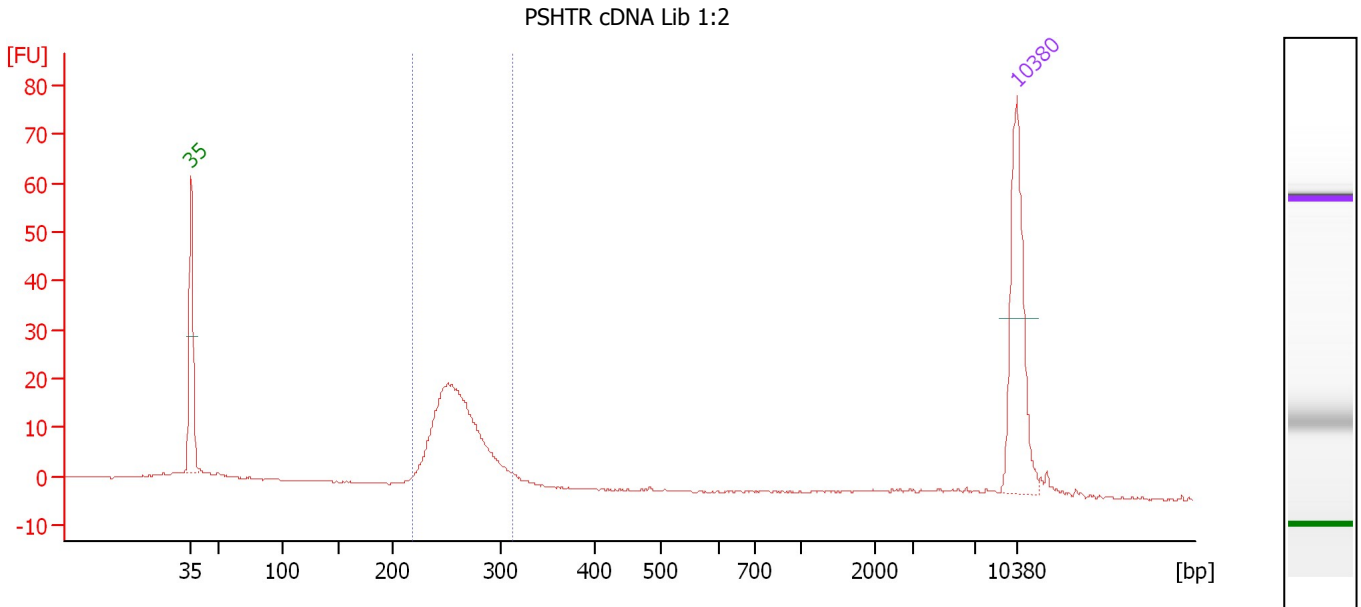
Region table for sample 6 : PSHM cDNA Lib 1:2

From [bp]	To [bp]	Average Size [bp]	Molarity [pmol/l]	Conc. [pg/μl]	Corr. Area	% of Total	Size distribution in CV [%]	Color
216	311	257	2,277.3	386.53	306.5	82	7.5	Blue

Assay Class: High Sensitivity DNA Assay
 Data Path: C:\...ents and Settings\Bioanalyzer\2013-02-25\2013-02-25_002.xad

Created: 2/25/2013 4:43:48 PM
 Modified: 2/25/2013 5:24:49 PM

Electropherogram Summary Continued ...



Overall Results for sample 7 : PSHTR cDNA Lib 1:2

Number of peaks found: 0 Corr. Area 1: 148.2
 Noise: 0.1

Peak table for sample 7 : PSHTR cDNA Lib 1:2

Peak	Size [bp]	Conc. [pg/μl]	Molarity [pmol/l]	Observations
1	35	125.00	5,411.3	Lower Marker
2	10,380	75.00	10.9	Upper Marker

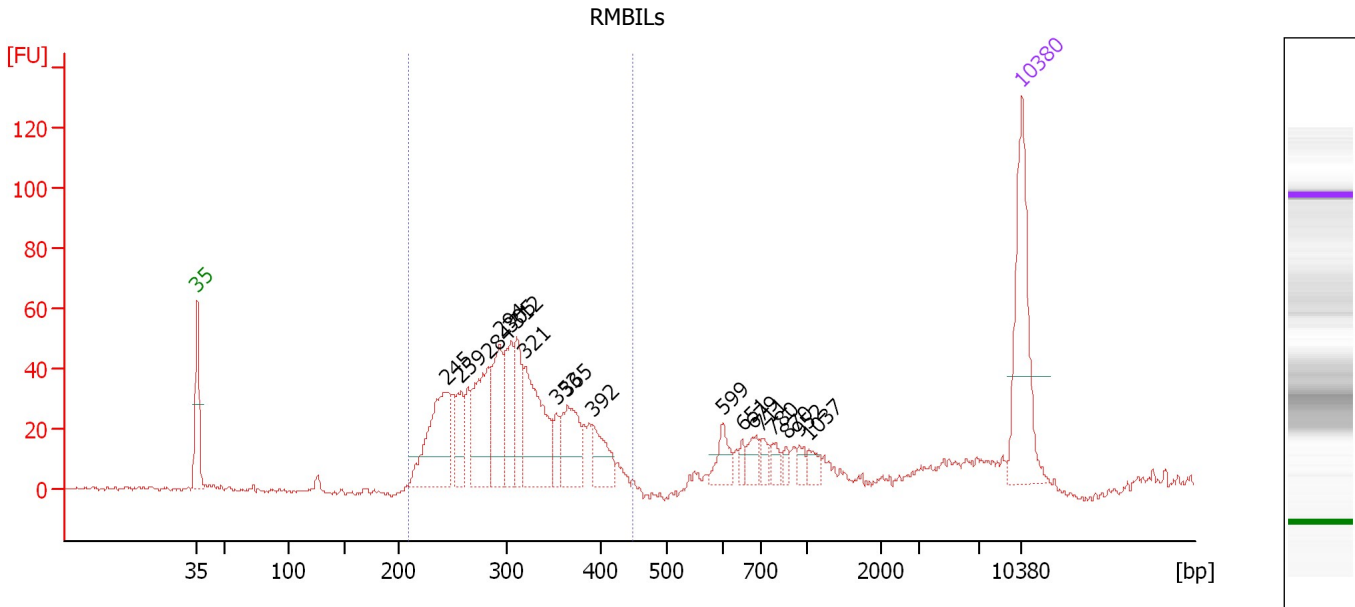
Region table for sample 7 : PSHTR cDNA Lib 1:2

From [bp]	To [bp]	Average Size [bp]	Molarity [pmol/l]	Conc. [pg/μl]	Corr. Area	% of Total	Size distribution in CV [%]	Color
218	313	261	1,151.5	197.73	148.2	79	7.6	Blue

Assay Class: High Sensitivity DNA Assay
 Data Path: C:\...ents and Settings\Bioanalyzer\2013-02-25\2013-02-25_002.xad

Created: 2/25/2013 4:43:48 PM
 Modified: 2/25/2013 5:24:49 PM

Electropherogram Summary Continued ...



Setpoint Deviations for sample 8 : RMBILs

Height Threshold [FU] : 10

Overall Results for sample 8 : RMBILs

Number of peaks found: 18 Corr. Area 1: 724.3
 Noise: 0.9

Peak table for sample 8 : RMBILs

Peak	Size [bp]	Conc. [pg/μl]	Molarity [pmol/l]	Observations
1	35	125.00	5,411.3	Lower Marker
2	245	98.38	609.1	
3	259	34.89	204.4	
4	284	81.57	435.3	
5	294	58.23	299.8	
6	305	49.33	244.7	
7	312	45.12	219.4	
8	321	87.96	415.7	
9	353	15.16	65.0	
10	365	49.38	204.9	
11	392	29.39	113.7	
12	599	18.90	47.8	
13	651	6.31	14.7	
14	679	13.49	30.1	
15	711	9.37	20.0	
16	780	8.89	17.3	
17	870	4.94	8.6	
18	952	6.80	10.8	
19	1,037	8.59	12.6	
20	10,380	75.00	10.9	Upper Marker

Assay Class: High Sensitivity DNA Assay
Data Path: C:\...ents and Settings\Bioanalyzer\2013-02-25\2013-02-25_002.xad

Created: 2/25/2013 4:43:48 PM
Modified: 2/25/2013 5:24:49 PM

Electropherogram Summary Continued ...

... Region table for sample 8 :

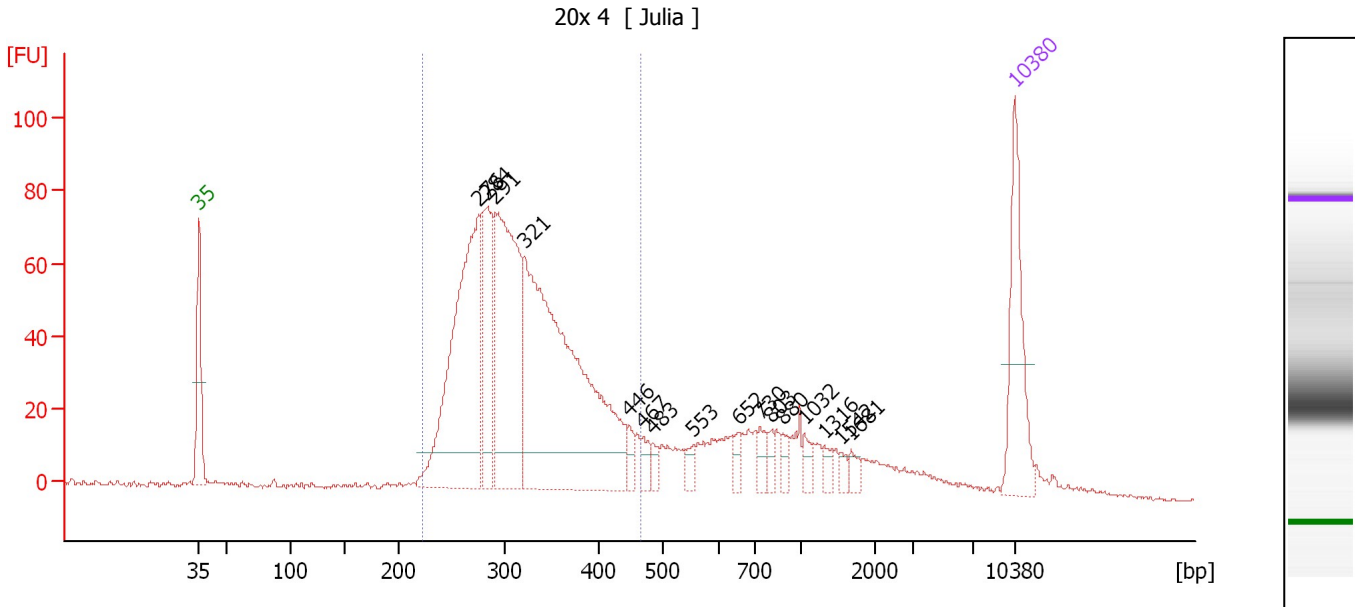
RMBILs

From [bp]	To [bp]	Average Size [bp]	Molarity [pmol/l]	Conc. [pg/μl]	Corr. Area	% of Total	Size distribution in CV [%]	Color
209	449	307	3,086.3	604.45	724.3	79	16.6	■

Assay Class: High Sensitivity DNA Assay
 Data Path: C:\...ents and Settings\Bioanalyzer\2013-02-25\2013-02-25_002.xad

Created: 2/25/2013 4:43:48 PM
 Modified: 2/25/2013 5:24:49 PM

Electropherogram Summary Continued ...



Setpoint Deviations for sample 9 : 20x 4

Height Threshold [FU] : 10

Overall Results for sample 9 : 20x 4

Number of peaks found: 16 Corr. Area 1: 1,202.4
 Noise: 0.7

Peak table for sample 9 : 20x 4

Peak	Size [bp]	Conc. [pg/μl]	Molarity [pmol/l]	Observations
1	35	125.00	5,411.3	Lower Marker
2	276	341.52	1,877.8	
3	284	120.76	645.2	
4	291	276.81	1,440.6	
5	321	509.37	2,402.0	
6	446	13.86	47.0	
7	467	13.45	43.6	
8	483	9.49	29.8	
9	553	9.97	27.3	
10	652	10.17	23.6	
11	730	12.94	26.9	
12	803	10.15	19.2	
13	880	10.51	18.1	
14	1,032	10.00	14.7	
15	1,316	8.08	9.3	
16	1,542	6.31	6.2	
17	1,681	8.54	7.7	
18	10,380	75.00	10.9	Upper Marker

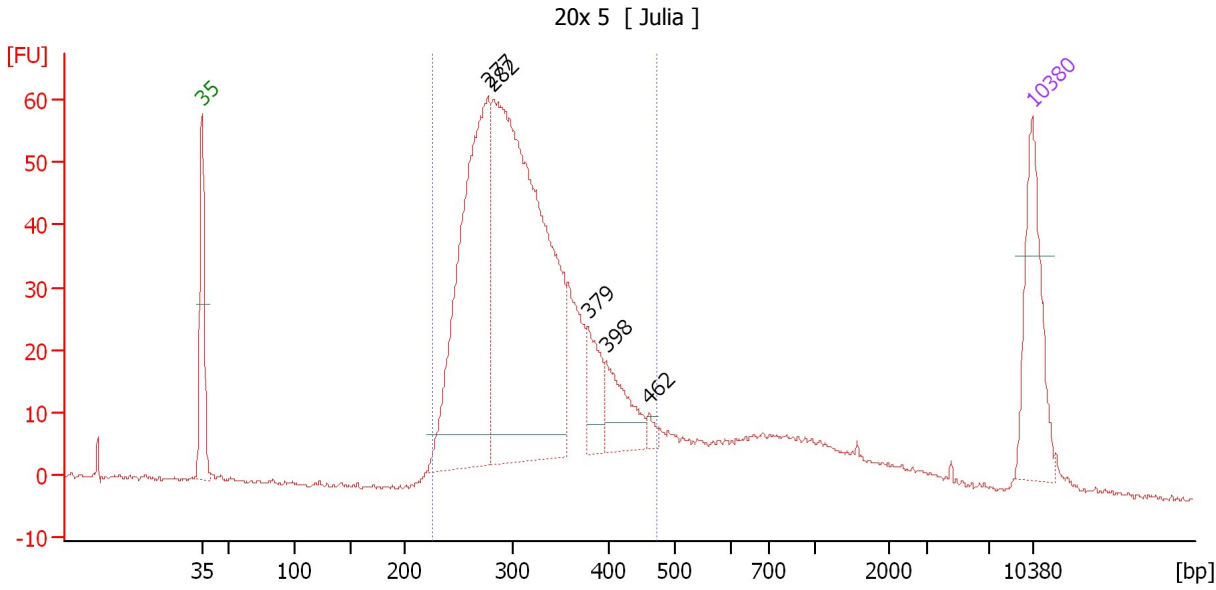
Region table for sample 9 : 20x 4

From [bp]	To [bp]	Average Size [bp]	Molarity [pmol/l]	Conc. [pg/μl]	Corr. Area	% of Total	Size distribution in CV [%]	Color
223	465	320	6,152.0	1,253.37	1,202.4	74	16.6	Blue

Assay Class: High Sensitivity DNA Assay
 Data Path: C:\...ents and Settings\Bioanalyzer\2013-02-25\2013-02-25_002.xad

Created: 2/25/2013 4:43:48 PM
 Modified: 2/25/2013 5:24:49 PM

Electropherogram Summary Continued ...



Overall Results for sample 10 : 20x 5

Number of peaks found: 5 Corr. Area 1: 958.5
 Noise: 0.4

Peak table for sample 10 : 20x 5

Peak	Size [bp]	Conc. [pg/μl]	Molarity [pmol/l]	Observations
1	35	125.00	5,411.3	Lower Marker
2	277	392.64	2,145.8	
3	282	633.35	3,400.8	
4	379	46.33	185.2	
5	398	55.82	212.5	
6	462	6.97	22.9	
7	10,380	75.00	10.9	Upper Marker

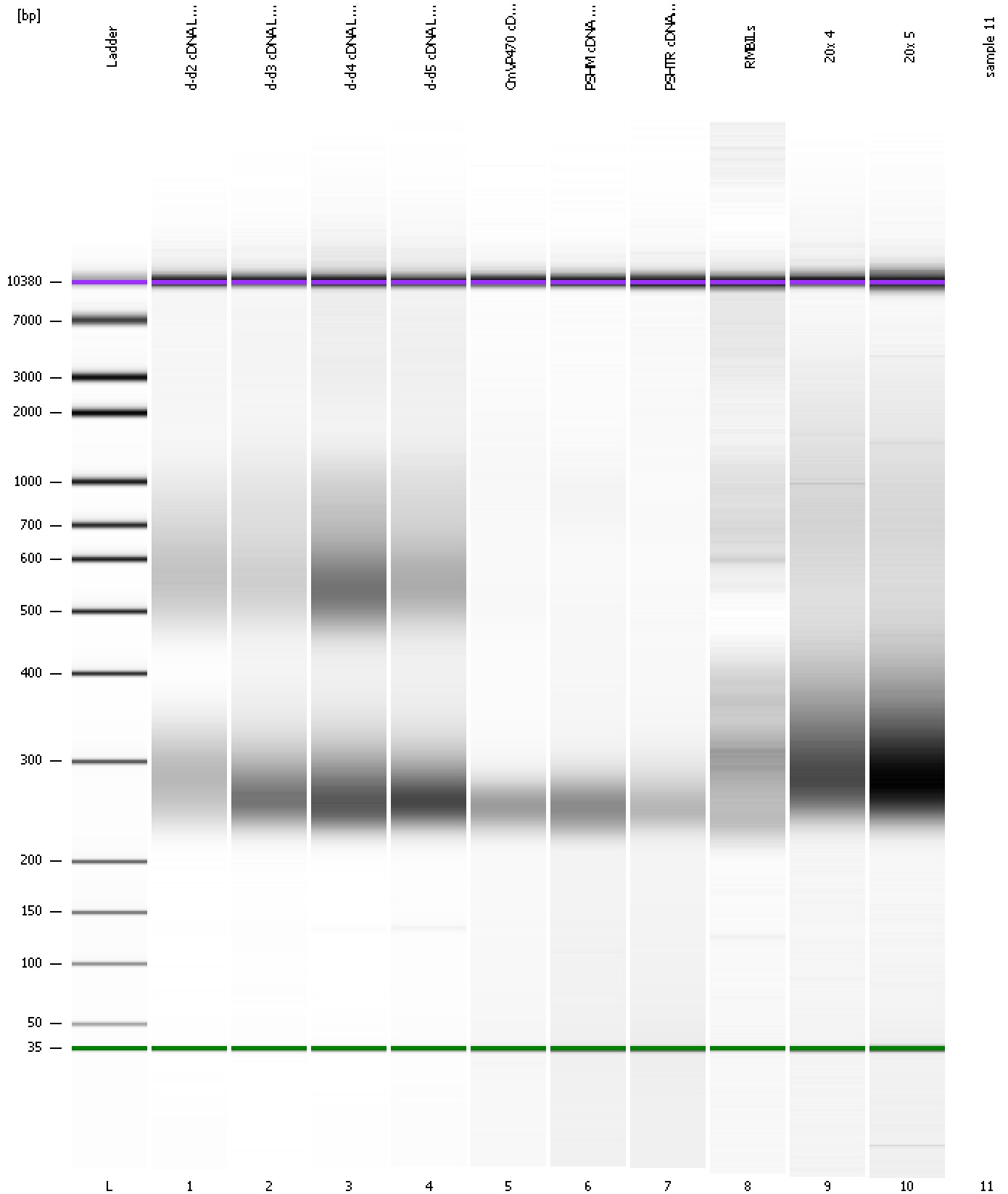
Region table for sample 10 : 20x 5

From [bp]	To [bp]	Average Size [bp]	Molarity [pmol/l]	Conc. [pg/μl]	Corr. Area	% of Total	Size distribution in CV [%]	Color
225	473	317	6,650.6	1,341.36	958.5	81	17.1	Blue

Assay Class: High Sensitivity DNA Assay
Data Path: C:\...ents and Settings\Bioanalyzer\2013-02-25\2013-02-25_002.xad

Created: 2/25/2013 4:43:48 PM
Modified: 2/25/2013 5:24:49 PM

Gel Image



Assay Class: High Sensitivity DNA Assay
Data Path: C:\...ents and Settings\Bioanalyzer\2013-02-25\2013-02-25_002.xad

Created: 2/25/2013 4:43:48 PM
Modified: 2/25/2013 5:24:49 PM

Invalid Samples

Sample 11 has not been run, no results available.

Assay Class: High Sensitivity DNA Assay
 Data Path: C:\...ents and Settings\Bioanalyzer\2013-02-25\2013-02-25_002.xad

Created: 2/25/2013 4:43:48 PM
 Modified: 2/25/2013 5:24:49 PM

Run Logbook

Description	Number	Source	Category	Sub Category	Time	Time Zone	User	Host
Run ended on port 1 (Number of wells acquired: 11)		Instrument	Run		2/25/2013 5:22:15 PM	(GMT --08:00) Pacific Standard Time	UC Davis	D8XSMGH1
Run started on port 1 (File: C:\Documents and Settings\Bioanalyzer\2013-02-25\2013-02-25_002.xad)		Instrument	Run		2/25/2013 4:43:54 PM	(GMT --08:00) Pacific Standard Time	UC Davis	D8XSMGH1
Product Number : G2938B		Instrument	Run		2/25/2013 4:43:54 PM	(GMT --08:00) Pacific Standard Time	UC Davis	D8XSMGH1
Name :		Instrument	Run		2/25/2013 4:43:54 PM	(GMT --08:00) Pacific Standard Time	UC Davis	D8XSMGH1
Vendor : Agilent Technologies		Instrument	Run		2/25/2013 4:43:54 PM	(GMT --08:00) Pacific Standard Time	UC Davis	D8XSMGH1
Serial# : DE13701086		Instrument	Run		2/25/2013 4:43:54 PM	(GMT --08:00) Pacific Standard Time	UC Davis	D8XSMGH1
Firmware : C.01.069		Instrument	Run		2/25/2013 4:43:54 PM	(GMT --08:00) Pacific Standard Time	UC Davis	D8XSMGH1
Cartridge : Electrode		Instrument	Run		2/25/2013 4:43:54 PM	(GMT --08:00) Pacific Standard Time	UC Davis	D8XSMGH1