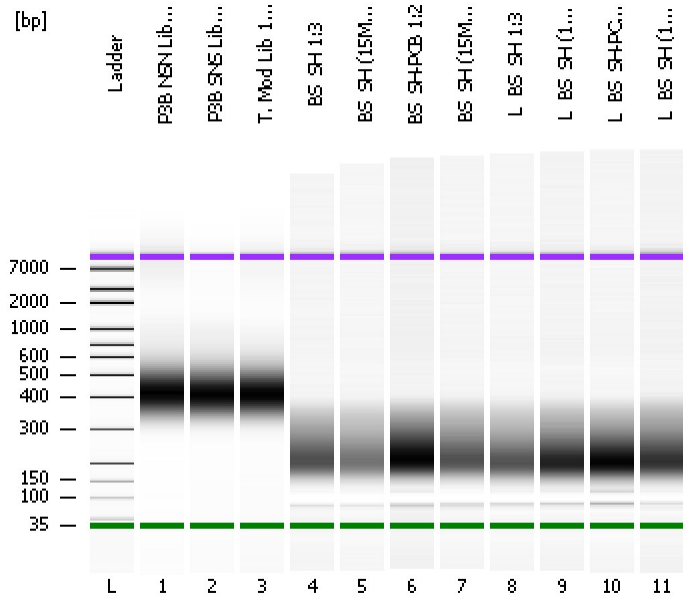


Assay Class: High Sensitivity DNA Assay  
Data Path: C:\...ents and Settings\Bioanalyzer\2013-02-26\2013-02-26\_001.xad

Created: 2/26/2013 10:35:50 AM  
Modified: 2/26/2013 11:19:16 AM

### Electrophoresis File Run Summary



#### Instrument Information:

Instrument Name: DE13701086      Firmware: C.01.069  
Serial#: DE13701086      Type: G2938B

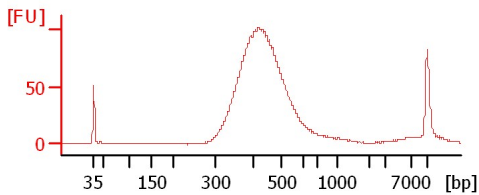
#### Assay Information:

Assay Origin Path: C:\Program Files\Agilent\2100 bioanalyzer\2100 expert\assays\dsDNA\High Sensitivity DNA.xsy  
Assay Class: High Sensitivity DNA Assay  
Version: 1.03  
Assay Comments: Copyright © 2003-2010 Agilent Technologies

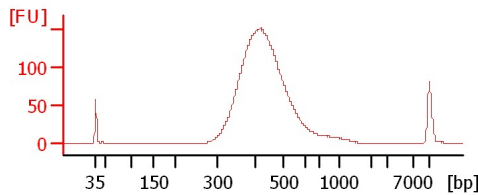
#### Chip Information:

Chip Lot #:      Reagent Kit Lot #:      Chip Comments:

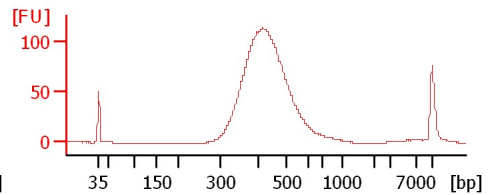
P3B NSN Lib 1:20



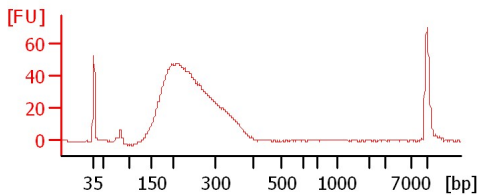
P3B SNS Lib 1:15



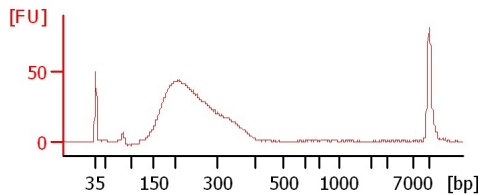
T. Mod Lib 1:20



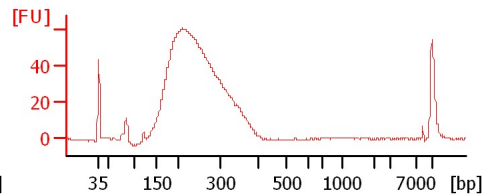
BS\_SH 1:3



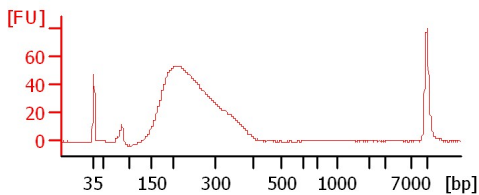
BS\_SH (15M) 1:3



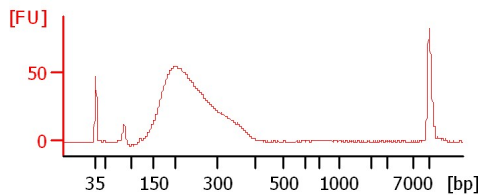
BS\_SH-PCB 1:2



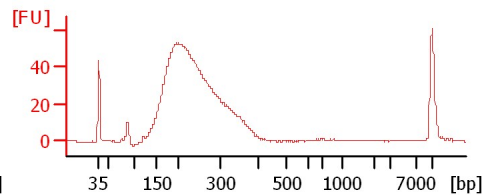
BS\_SH (15M)-PCB 1:3



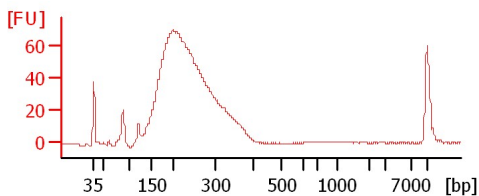
L\_BS\_SH 1:3



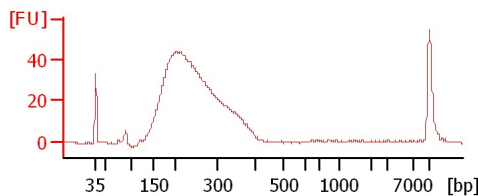
L\_BS\_SH (15M) 1:3



L\_BS\_SH-PCB 1:2



L\_BS\_SH (15M)-PCB 1:2



Assay Class: High Sensitivity DNA Assay  
Data Path: C:\...ents and Settings\Bioanalyzer\2013-02-26\2013-02-26\_001.xad

Created: 2/26/2013 10:35:50 AM  
Modified: 2/26/2013 11:19:16 AM

**Electrophoresis File Run Summary (Chip Summary)**

Sample Name	Sample Comment	Rest. Digest	Status	Observation	Result Label	Result Color
P3B NSN Lib 1:20		<input type="checkbox"/>	✓			
P3B SNS Lib 1:15		<input type="checkbox"/>	✓			
T. Mod Lib 1:20		<input type="checkbox"/>	✓			
BS_SH 1:3		<input type="checkbox"/>	✓			
BS_SH (15M) 1:3		<input type="checkbox"/>	✓			
BS_SH-PCB 1:2		<input type="checkbox"/>	✓			
BS_SH (15M)-PCB 1:3		<input type="checkbox"/>	✓			
L_BS_SH 1:3		<input type="checkbox"/>	✓			
L_BS_SH (15M) 1:3		<input type="checkbox"/>	✓			
L_BS_SH-PCB 1:2		<input type="checkbox"/>	✓			
L_BS_SH (15M)-PCB 1:2		<input type="checkbox"/>	✓			
Ladder		<input type="checkbox"/>	✓			

**Chip Lot #**

**Reagent Kit Lot #**

**Chip Comments :**

Assay Class: High Sensitivity DNA Assay  
Data Path: C:\...ents and Settings\Bioanalyzer\2013-02-26\2013-02-26\_001.xad

Created: 2/26/2013 10:35:50 AM  
Modified: 2/26/2013 11:19:16 AM

**Electrophoresis Assay Details**

**General Analysis Settings**

Number of Available Sample and Ladder Wells (Max.) : 12  
Minimum Visible Range [s] : 32  
Maximum Visible Range [s] : 138  
Start Analysis Time Range [s] : 33  
End Analysis Time Range [s] : 137.5  
Ladder Concentration [pg/μl] : 1950  
Uses Standard Area for Ladder Fragments  
Lower Marker Concentration [pg/μl] : 125  
Upper Marker Concentration [pg/μl] : 75  
Used Upper Marker for Quantitation  
Standard Curve Fit is Point to Point  
Show Data Aligned to Lower and Upper Marker

**Integrator Settings**

Integration Start Time [s] : 33.05  
Integration End Time [s] : 137  
Slope Threshold : 0.8  
Height Threshold [FU] : 5  
Area Threshold : 0.1  
Width Threshold [s] : 0.6  
Baseline Plateau [s] : 0.5

**Filter Settings**

Filter Width [s] : 0.5  
Polynomial Order : 4

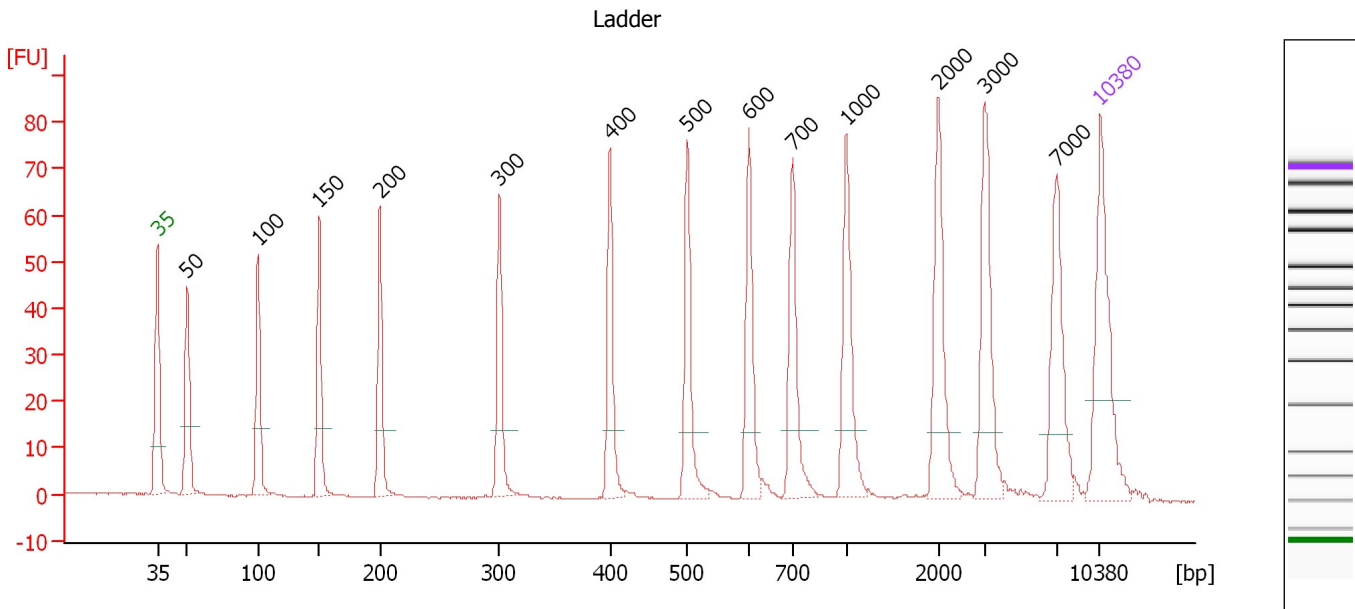
**Ladder**

Ladder Peak	Size	Area
1	35	160
2	50	210
3	100	208
4	150	221
5	200	242
6	300	270
7	400	305
8	500	306
9	600	336
10	700	321
11	1000	366
12	2000	413
13	3000	411
14	7000	400
15	10380	214

Assay Class: High Sensitivity DNA Assay  
 Data Path: C:\...ents and Settings\Bioanalyzer\2013-02-26\2013-02-26\_001.xad

Created: 2/26/2013 10:35:50 AM  
 Modified: 2/26/2013 11:19:16 AM

**Electropherogram Summary**



**Overall Results for Ladder**

Noise: 0.1

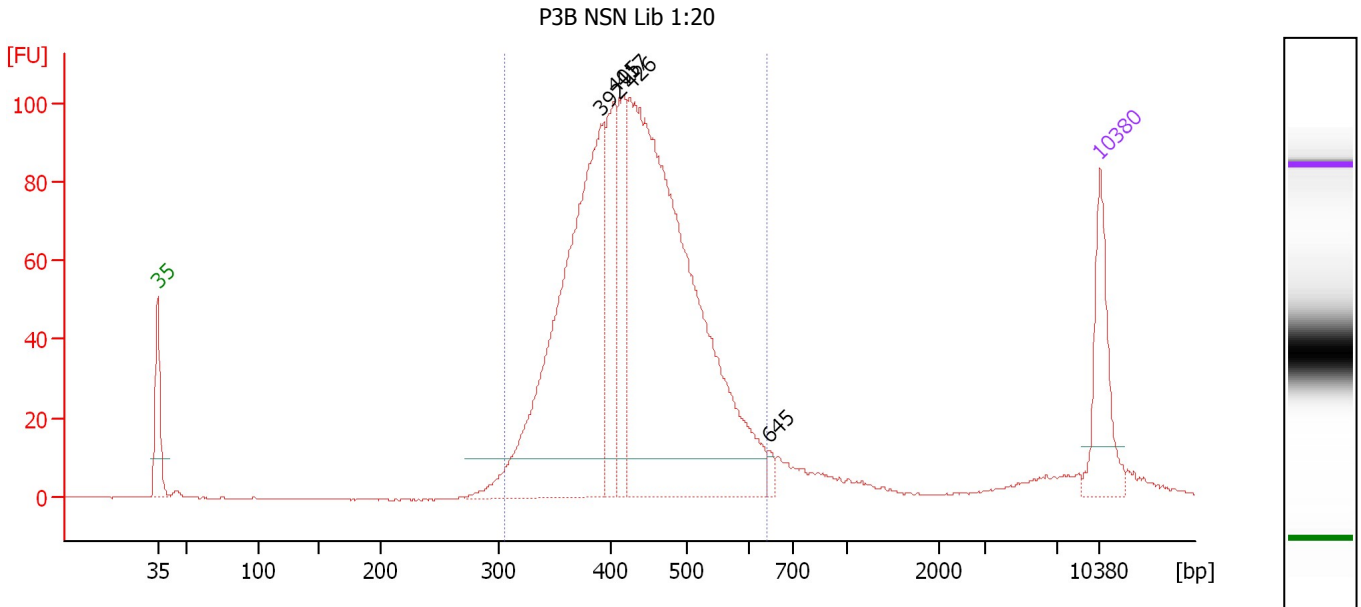
**Peak table for Ladder**

Peak	Size [bp]	Conc. [pg/μl]	Molarity [pmol/l]	Observations
1	35	125.00	5,411.3	Lower Marker
2	50	150.00	4,545.5	Ladder Peak
3	100	150.00	2,272.7	Ladder Peak
4	150	150.00	1,515.2	Ladder Peak
5	200	150.00	1,136.4	Ladder Peak
6	300	150.00	757.6	Ladder Peak
7	400	150.00	568.2	Ladder Peak
8	500	150.00	454.5	Ladder Peak
9	600	150.00	378.8	Ladder Peak
10	700	150.00	324.7	Ladder Peak
11	1,000	150.00	227.3	Ladder Peak
12	2,000	150.00	113.6	Ladder Peak
13	3,000	150.00	75.8	Ladder Peak
14	7,000	150.00	32.5	Ladder Peak
15	10,380	75.00	10.9	Upper Marker

Assay Class: High Sensitivity DNA Assay  
 Data Path: C:\...ents and Settings\Bioanalyzer\2013-02-26\2013-02-26\_001.xad

Created: 2/26/2013 10:35:50 AM  
 Modified: 2/26/2013 11:19:16 AM

**Electropherogram Summary Continued ...**



**Setpoint Deviations for sample 1 : P3B NSN Lib 1:20**

Height Threshold [FU] : 10

**Overall Results for sample 1 : P3B NSN Lib 1:20**

Number of peaks found: 5                      Corr. Area 1: 1,439.5  
 Noise: 0.1

**Peak table for sample 1 : P3B NSN Lib 1:20**

Peak	Size [bp]	Conc. [pg/μl]	Molarity [pmol/l]	Observations
1	35	125.00	5,411.3	Lower Marker
2	392	594.88	2,300.9	
3	405	133.59	499.3	
4	417	121.91	442.8	
5	426	883.11	3,142.5	
6	645	8.65	20.3	
7	10,380	75.00	10.9	Upper Marker

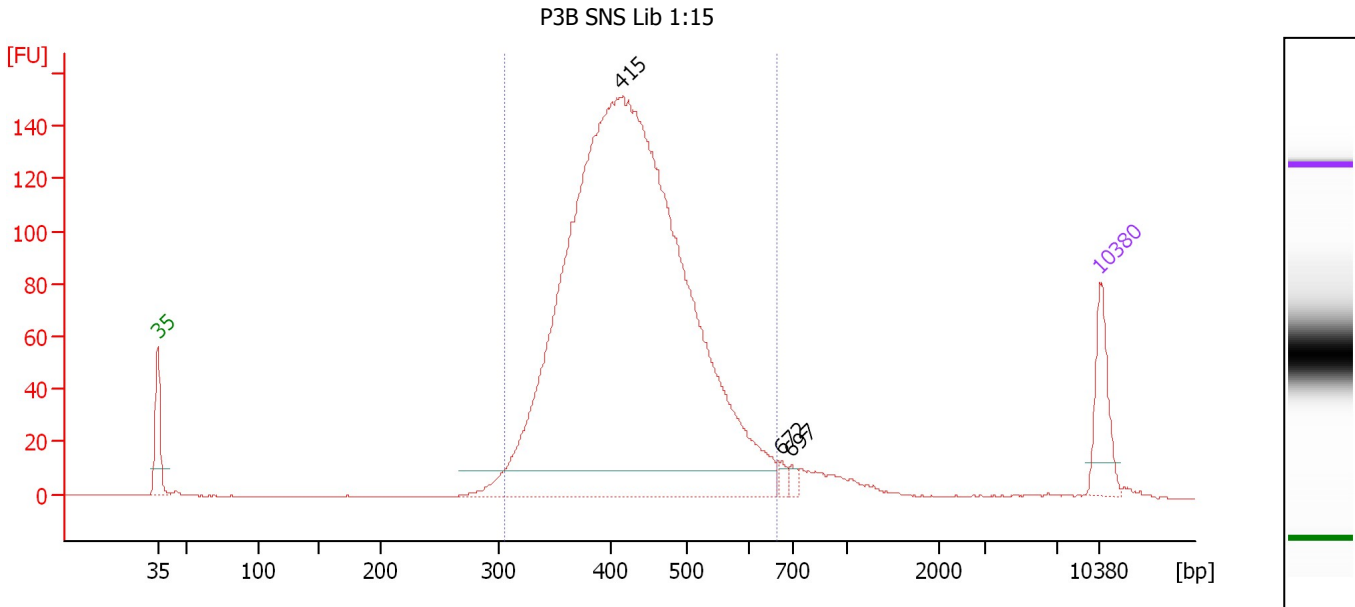
**Region table for sample 1 : P3B NSN Lib 1:20**

From [bp]	To [bp]	Average Size [bp]	Molarity [pmol/l]	Conc. [pg/μl]	Corr. Area	% of Total	Size distribution in CV [%]	Color
306	642	435	6,194.2	1,727.04	1,439.5	91	15.7	Blue

Assay Class: High Sensitivity DNA Assay  
 Data Path: C:\...ents and Settings\Bioanalyzer\2013-02-26\2013-02-26\_001.xad

Created: 2/26/2013 10:35:50 AM  
 Modified: 2/26/2013 11:19:16 AM

**Electropherogram Summary Continued ...**



**Setpoint Deviations for sample 2 : P3B SNS Lib 1:15**

Height Threshold [FU] : 10

**Overall Results for sample 2 : P3B SNS Lib 1:15**

Number of peaks found: 3                      Corr. Area 1: 2,102.7  
 Noise: 0.2

**Peak table for sample 2 : P3B SNS Lib 1:15**

Peak	Size [bp]	Conc. [pg/µl]	Molarity [pmol/l]	Observations
1	35	125.00	5,411.3	Lower Marker
2	415	2,824.64	10,322.4	
3	672	12.04	27.1	
4	697	10.73	23.3	
5	10,380	75.00	10.9	Upper Marker

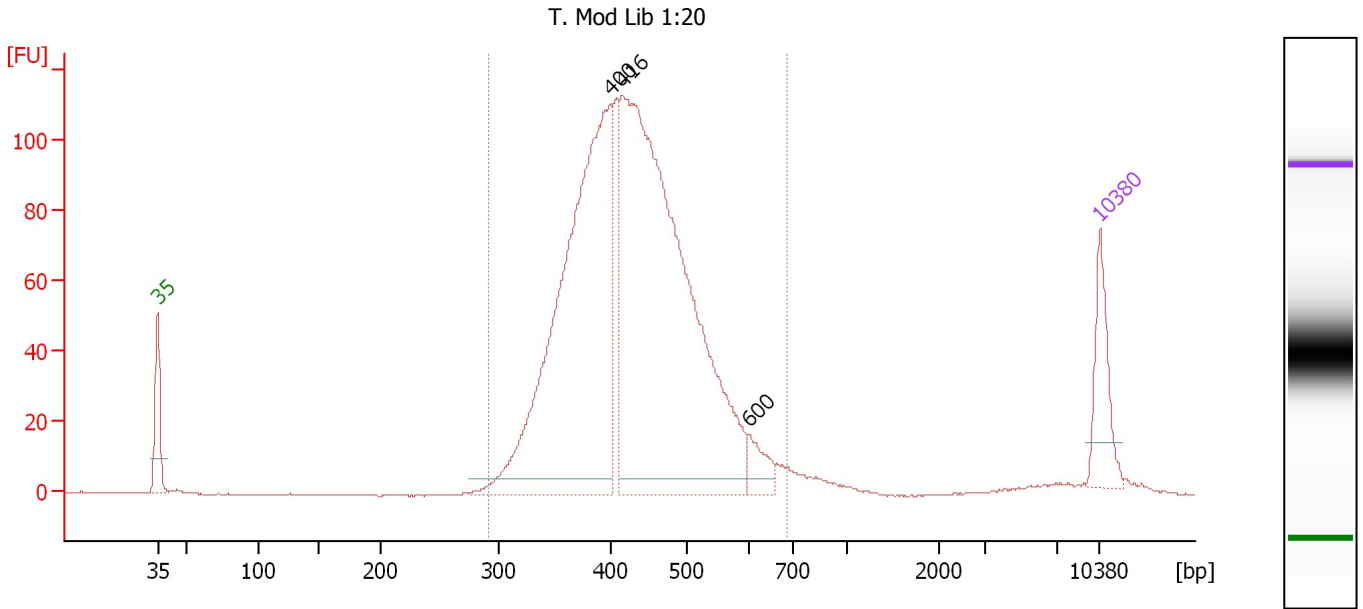
**Region table for sample 2 : P3B SNS Lib 1:15**

From [bp]	To [bp]	Average Size [bp]	Molarity [pmol/l]	Conc. [pg/µl]	Corr. Area	% of Total	Size distribution in CV [%]	Color
304	662	433	10,192.4	2,825.31	2,102.7	94	15.9	Blue

Assay Class: High Sensitivity DNA Assay  
 Data Path: C:\...ents and Settings\Bioanalyzer\2013-02-26\2013-02-26\_001.xad

Created: 2/26/2013 10:35:50 AM  
 Modified: 2/26/2013 11:19:16 AM

**Electropherogram Summary Continued ...**



**Overall Results for sample 3 : T. Mod Lib 1:20**

Number of peaks found: 3                      Corr. Area 1: 1,575.7  
 Noise: 0.1

**Peak table for sample 3 : T. Mod Lib 1:20**

Peak	Size [bp]	Conc. [pg/μl]	Molarity [pmol/l]	Observations
1	35	125.00	5,411.3	Lower Marker
2	400	933.70	3,536.7	
3	416	1,227.10	4,473.6	
4	600	41.82	105.6	
5	10,380	75.00	10.9	Upper Marker

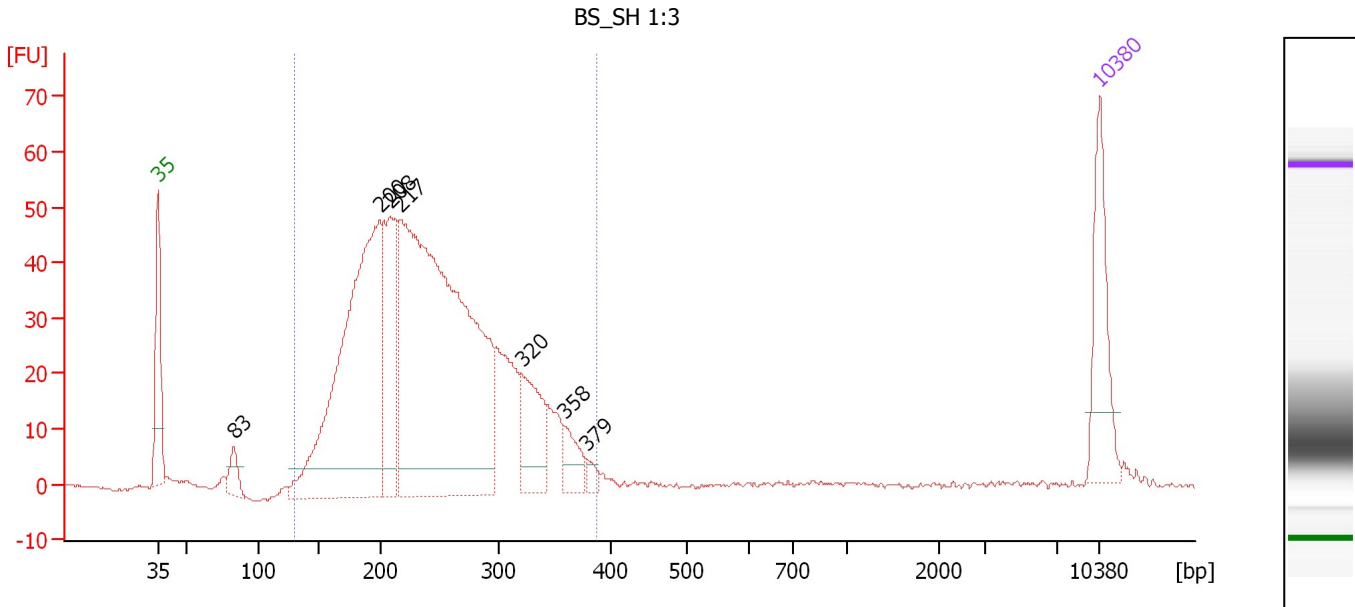
**Region table for sample 3 : T. Mod Lib 1:20**

From [bp]	To [bp]	Average Size [bp]	Molarity [pmol/l]	Conc. [pg/μl]	Corr. Area	% of Total	Size distribution in CV [%]	Color
291	687	434	8,403.0	2,331.01	1,575.7	95	16.4	Blue

Assay Class: High Sensitivity DNA Assay  
 Data Path: C:\...ents and Settings\Bioanalyzer\2013-02-26\2013-02-26\_001.xad

Created: 2/26/2013 10:35:50 AM  
 Modified: 2/26/2013 11:19:16 AM

**Electropherogram Summary Continued ...**



**Overall Results for sample 4 : BS\_SH 1:3**

Number of peaks found: 7                      Corr. Area 1: 933.9  
 Noise: 0.2

**Peak table for sample 4 : BS\_SH 1:3**

Peak	Size [bp]	Conc. [pg/μl]	Molarity [pmol/l]	Observations
1	35	125.00	5,411.3	Lower Marker
2	83	28.69	523.5	
3	200	549.48	4,172.1	
4	208	171.69	1,248.8	
5	217	871.00	6,094.7	
6	320	87.60	414.2	
7	358	34.87	147.5	
8	379	9.63	38.5	
9	10,380	75.00	10.9	Upper Marker

**Region table for sample 4 : BS\_SH 1:3**

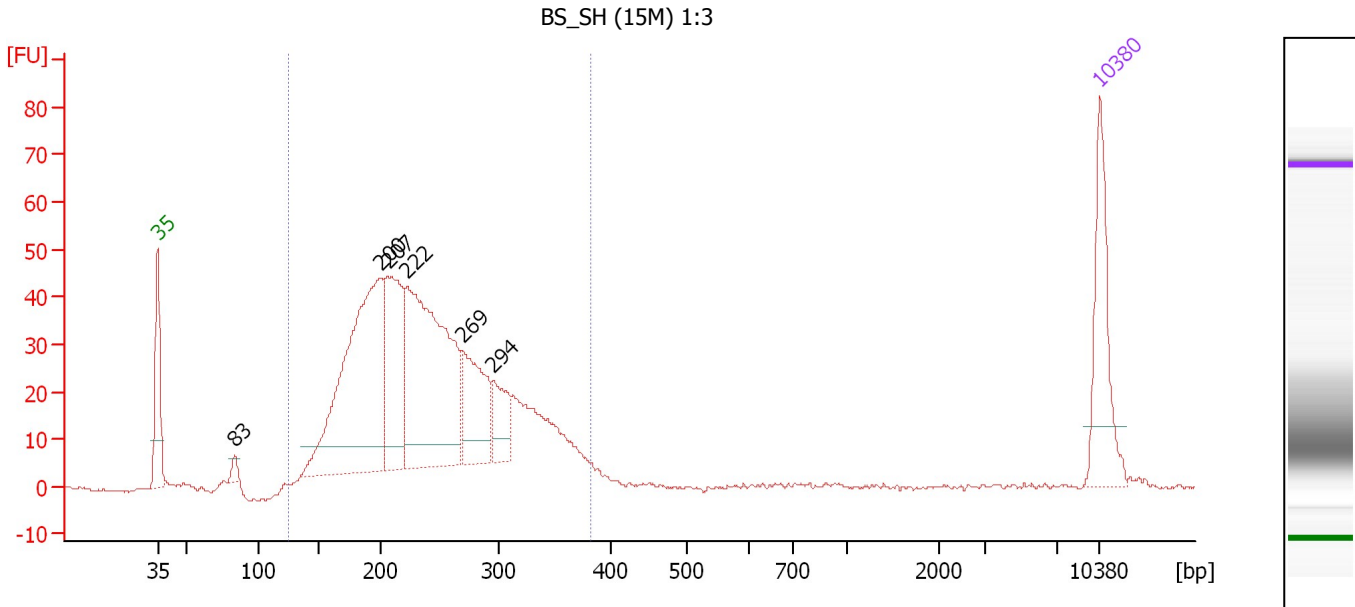
From [bp]	To [bp]	Average Size [bp]	Molarity [pmol/l]	Conc. [pg/μl]	Corr. Area	% of Total	Size distribution in CV [%]	Color
129	388	243	11,600.9	1,742.40	933.9	97	22.6	Blue



Assay Class: High Sensitivity DNA Assay  
 Data Path: C:\...ents and Settings\Bioanalyzer\2013-02-26\2013-02-26\_001.xad

Created: 2/26/2013 10:35:50 AM  
 Modified: 2/26/2013 11:19:16 AM

**Electropherogram Summary Continued ...**



**Overall Results for sample 5 : BS\_SH (15M) 1:3**

Number of peaks found: 6                      Corr. Area 1: 846.6  
 Noise: 0.3

**Peak table for sample 5 : BS\_SH (15M) 1:3**

Peak	Size [bp]	Conc. [pg/μl]	Molarity [pmol/l]	Observations
1	35	125.00	5,411.3	Lower Marker
2	83	10.88	197.8	
3	200	377.23	2,858.1	
4	207	158.11	1,159.0	
5	222	345.39	2,352.9	
6	269	105.34	593.4	
7	294	47.46	244.4	
8	10,380	75.00	10.9	Upper Marker

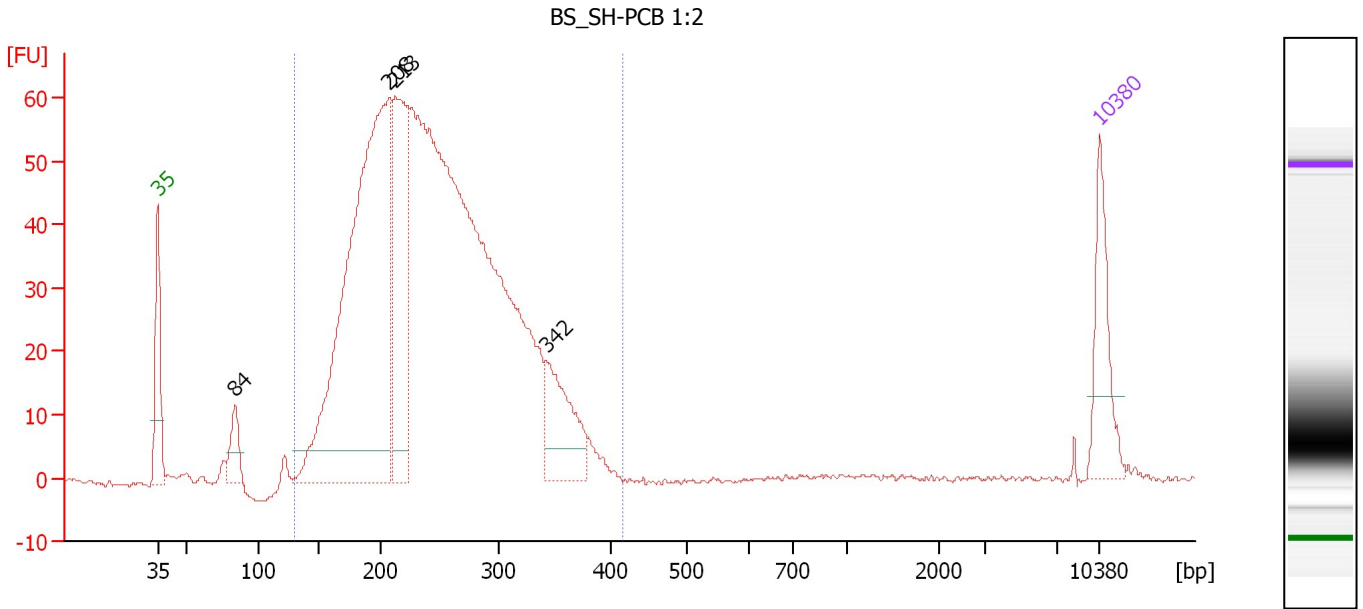
**Region table for sample 5 : BS\_SH (15M) 1:3**

From [bp]	To [bp]	Average Size [bp]	Molarity [pmol/l]	Conc. [pg/μl]	Corr. Area	% of Total	Size distribution in CV [%]	Color
126	382	242	9,081.5	1,353.96	846.6	97	23.0	Blue

Assay Class: High Sensitivity DNA Assay  
 Data Path: C:\...ents and Settings\Bioanalyzer\2013-02-26\2013-02-26\_001.xad

Created: 2/26/2013 10:35:50 AM  
 Modified: 2/26/2013 11:19:16 AM

**Electropherogram Summary Continued ...**



**Overall Results for sample 6 : BS\_SH-PCB 1:2**

Number of peaks found: 4                      Corr. Area 1: 1,165.2  
 Noise: 0.3

**Peak table for sample 6 : BS\_SH-PCB 1:2**

Peak	Size [bp]	Conc. [pg/μl]	Molarity [pmol/l]	Observations
1	35	125.00	5,411.3	Lower Marker
2	84	53.61	967.1	
3	208	930.21	6,782.7	
4	213	275.86	1,963.2	
5	342	122.66	542.8	
6	10,380	75.00	10.9	Upper Marker

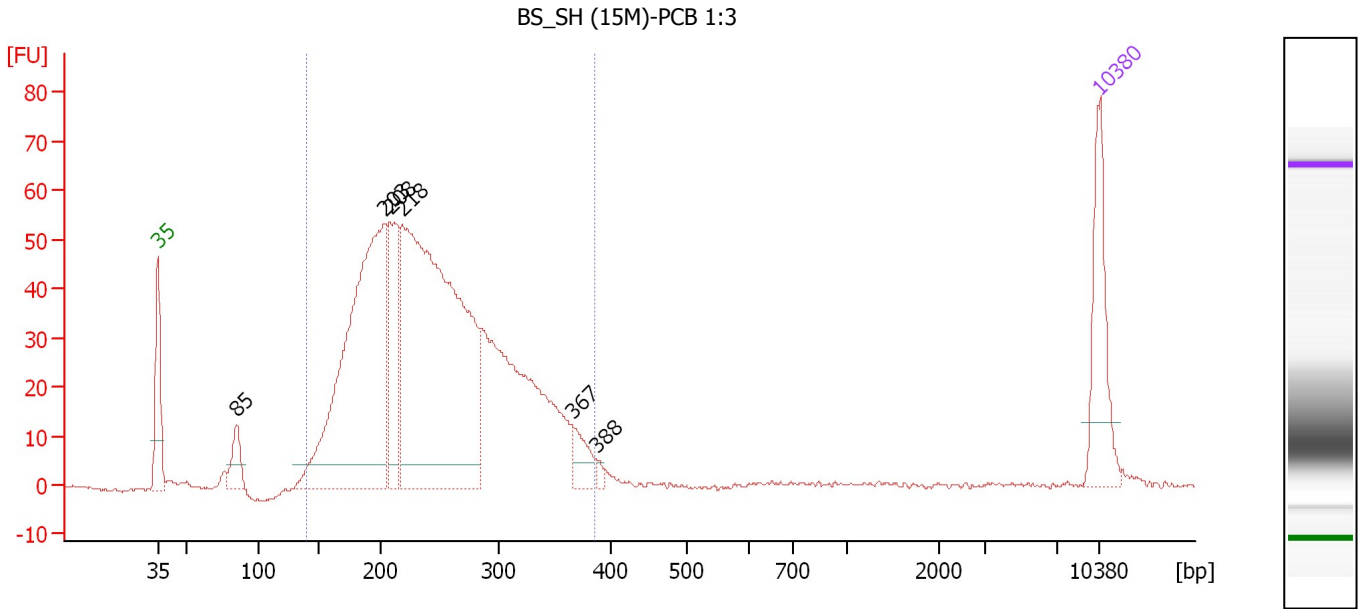
**Region table for sample 6 : BS\_SH-PCB 1:2**

From [bp]	To [bp]	Average Size [bp]	Molarity [pmol/l]	Conc. [pg/μl]	Corr. Area	% of Total	Size distribution in CV [%]	Color
130	415	246	18,722.6	2,854.51	1,165.2	97	22.3	Blue

Assay Class: High Sensitivity DNA Assay  
 Data Path: C:\...ents and Settings\Bioanalyzer\2013-02-26\2013-02-26\_001.xad

Created: 2/26/2013 10:35:50 AM  
 Modified: 2/26/2013 11:19:16 AM

**Electropherogram Summary Continued ...**



**Overall Results for sample 7 : BS\_SH (15M)-PCB 1:3**

Number of peaks found: 6                      Corr. Area 1: 1,023.5  
 Noise: 0.3

**Peak table for sample 7 : BS\_SH (15M)-PCB 1:3**

Peak	Size [bp]	Conc. [pg/μl]	Molarity [pmol/l]	Observations
1	35	125.00	5,411.3	Lower Marker
2	85	41.15	734.7	
3	203	532.64	3,966.0	
4	208	133.73	973.8	
5	218	735.72	5,105.4	
6	367	30.09	124.2	
7	388	6.17	24.1	
8	10,380	75.00	10.9	Upper Marker

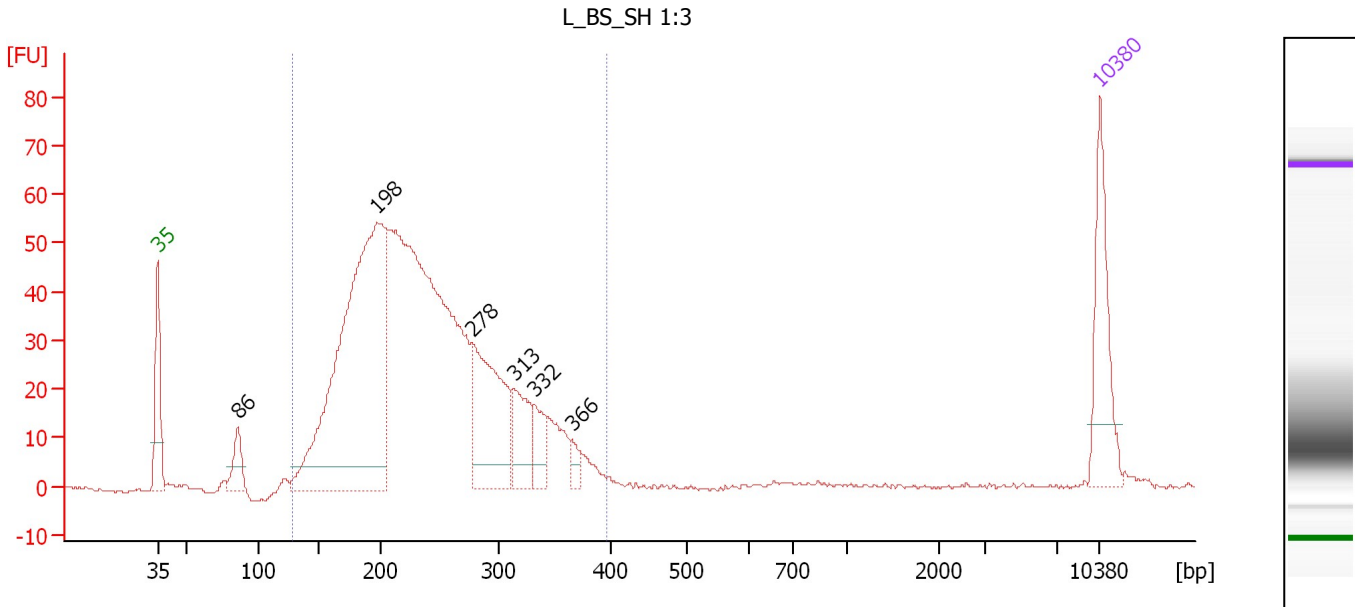
**Region table for sample 7 : BS\_SH (15M)-PCB 1:3**

From [bp]	To [bp]	Average Size [bp]	Molarity [pmol/l]	Conc. [pg/μl]	Corr. Area	% of Total	Size distribution in CV [%]	Color
140	386	246	11,330.3	1,724.74	1,023.5	96	22.5	Blue

Assay Class: High Sensitivity DNA Assay  
 Data Path: C:\...ents and Settings\Bioanalyzer\2013-02-26\2013-02-26\_001.xad

Created: 2/26/2013 10:35:50 AM  
 Modified: 2/26/2013 11:19:16 AM

**Electropherogram Summary Continued ...**



**Overall Results for sample 8 : L\_BS\_SH 1:3**

Number of peaks found: 6      Corr. Area 1: 981.0  
 Noise: 0.3

**Peak table for sample 8 : L\_BS\_SH 1:3**

Peak	Size [bp]	Conc. [pg/μl]	Molarity [pmol/l]	Observations
1	35	125.00	5,411.3	Lower Marker
2	86	39.88	705.2	
3	198	642.02	4,919.1	
4	278	176.80	965.0	
5	313	61.79	299.1	
6	332	32.31	147.7	
7	366	14.86	61.6	
8	10,380	75.00	10.9	Upper Marker

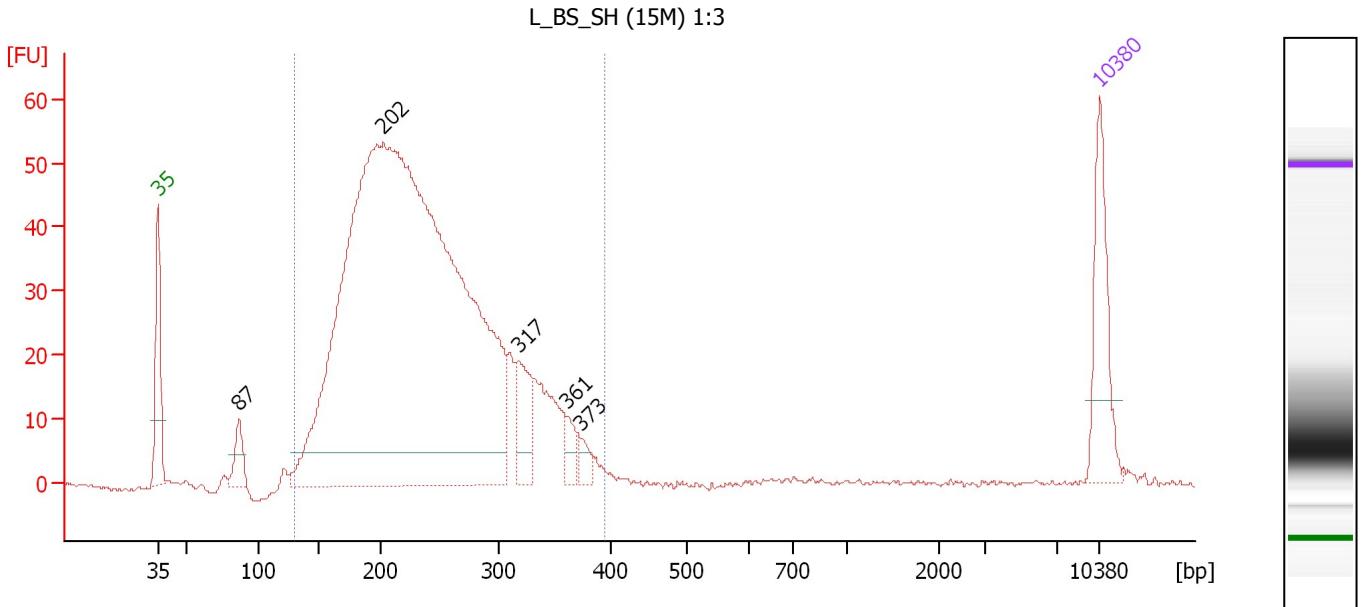
**Region table for sample 8 : L\_BS\_SH 1:3**

From [bp]	To [bp]	Average Size [bp]	Molarity [pmol/l]	Conc. [pg/μl]	Corr. Area	% of Total	Size distribution in CV [%]	Color
128	398	239	11,689.8	1,716.31	981.0	97	23.5	Blue

Assay Class: High Sensitivity DNA Assay  
 Data Path: C:\...ents and Settings\Bioanalyzer\2013-02-26\2013-02-26\_001.xad

Created: 2/26/2013 10:35:50 AM  
 Modified: 2/26/2013 11:19:16 AM

**Electropherogram Summary Continued ...**



**Overall Results for sample 9 : L\_BS\_SH (15M) 1:3**

Number of peaks found: 5                      Corr. Area 1: 965.9  
 Noise: 0.3

**Peak table for sample 9 : L\_BS\_SH (15M) 1:3**

Peak	Size [bp]	Conc. [pg/μl]	Molarity [pmol/l]	Observations
1	35	125.00	5,411.3	Lower Marker
2	87	37.09	647.0	
3	202	2,014.96	15,083.4	
4	317	65.64	313.5	
5	361	22.58	94.8	
6	373	14.24	57.8	
7	10,380	75.00	10.9	Upper Marker

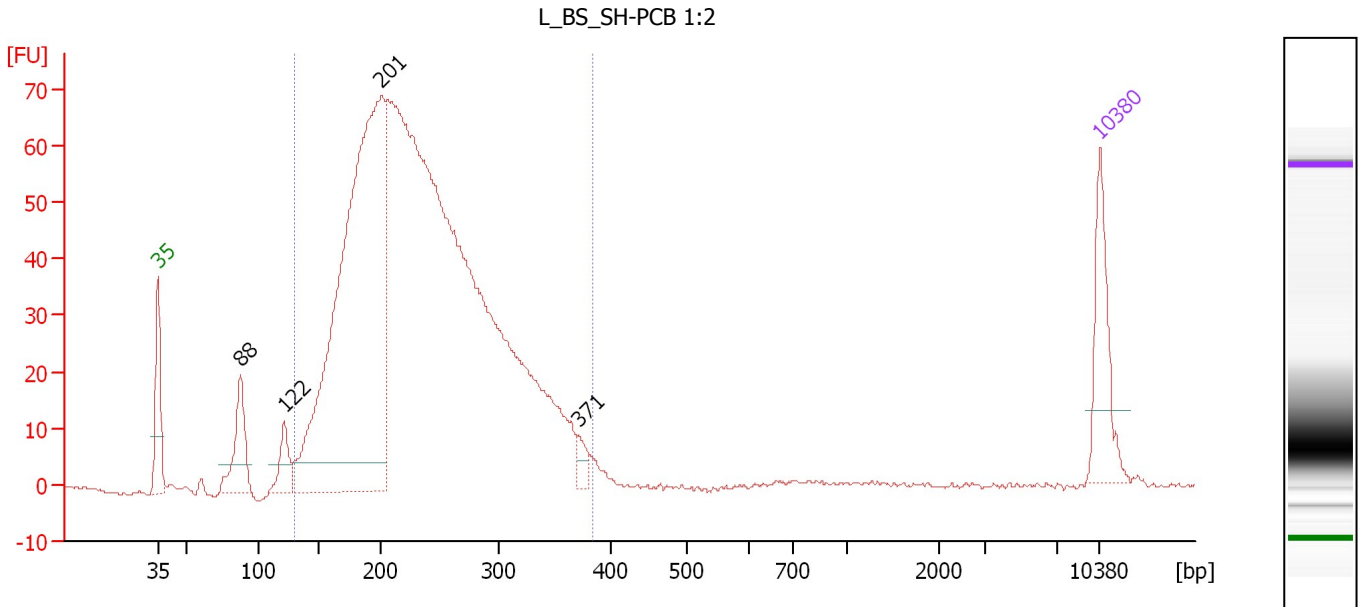
**Region table for sample 9 : L\_BS\_SH (15M) 1:3**

From [bp]	To [bp]	Average Size [bp]	Molarity [pmol/l]	Conc. [pg/μl]	Corr. Area	% of Total	Size distribution in CV [%]	Color
129	395	238	14,509.7	2,127.58	965.9	98	23.5	Blue

Assay Class: High Sensitivity DNA Assay  
 Data Path: C:\...ents and Settings\Bioanalyzer\2013-02-26\2013-02-26\_001.xad

Created: 2/26/2013 10:35:50 AM  
 Modified: 2/26/2013 11:19:16 AM

**Electropherogram Summary Continued ...**



**Overall Results for sample 10 : L\_BS\_SH-PCB 1:2**

Number of peaks found: 4                      Corr. Area 1: 1,217.7  
 Noise: 0.2

**Peak table for sample 10 : L\_BS\_SH-PCB 1:2**

Peak	Size [bp]	Conc. [pg/μl]	Molarity [pmol/l]	Observations
1	35	125.00	5,411.3	Lower Marker
2	88	97.11	1,676.5	
3	122	46.62	581.3	
4	201	1,024.03	7,723.4	
5	371	18.72	76.4	
6	10,380	75.00	10.9	Upper Marker

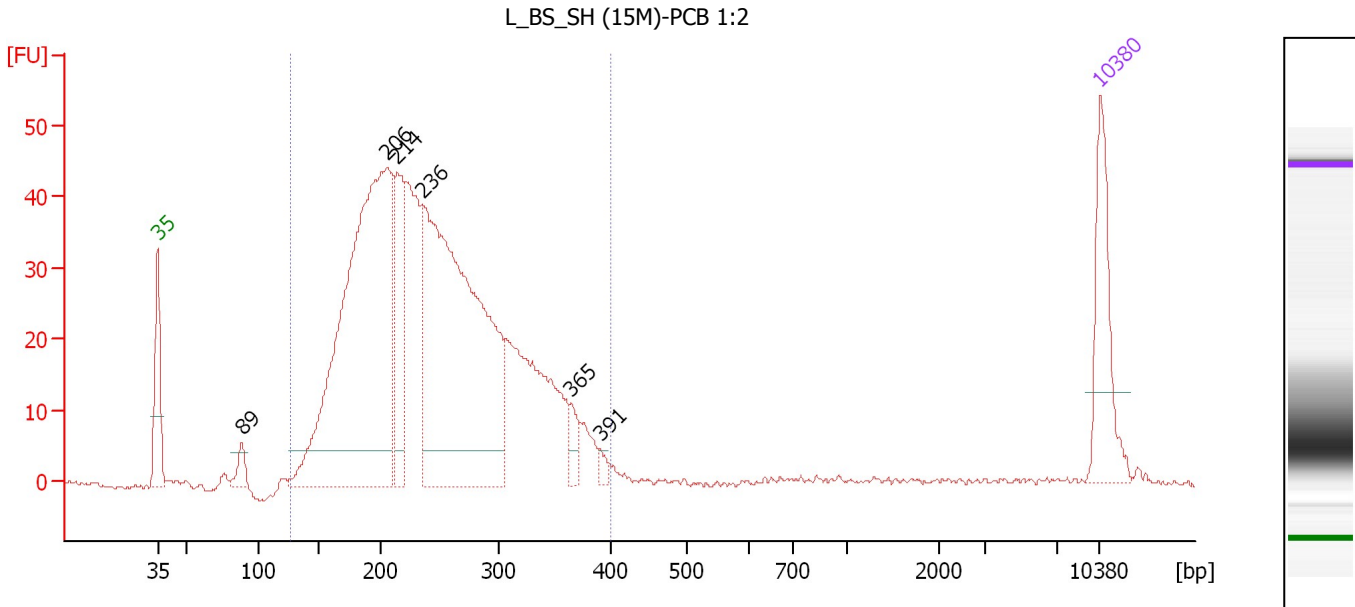
**Region table for sample 10 : L\_BS\_SH-PCB 1:2**

From [bp]	To [bp]	Average Size [bp]	Molarity [pmol/l]	Conc. [pg/μl]	Corr. Area	% of Total	Size distribution in CV [%]	Color
131	384	236	18,827.5	2,746.72	1,217.7	96	22.9	Blue

Assay Class: High Sensitivity DNA Assay  
 Data Path: C:\...ents and Settings\Bioanalyzer\2013-02-26\2013-02-26\_001.xad

Created: 2/26/2013 10:35:50 AM  
 Modified: 2/26/2013 11:19:16 AM

**Electropherogram Summary Continued ...**



**Overall Results for sample 11 : L\_BS\_SH (15M)-PCB 1:2**

Number of peaks found: 6      Corr. Area 1: 834.1  
 Noise: 0.3

**Peak table for sample 11 : L\_BS\_SH (15M)-PCB 1:2**

Peak	Size [bp]	Conc. [pg/μl]	Molarity [pmol/l]	Observations
1	35	125.00	5,411.3	Lower Marker
2	89	22.70	388.4	
3	206	705.82	5,192.6	
4	214	126.12	892.4	
5	236	641.15	4,110.7	
6	365	21.15	87.9	
7	391	8.67	33.6	
8	10,380	75.00	10.9	Upper Marker

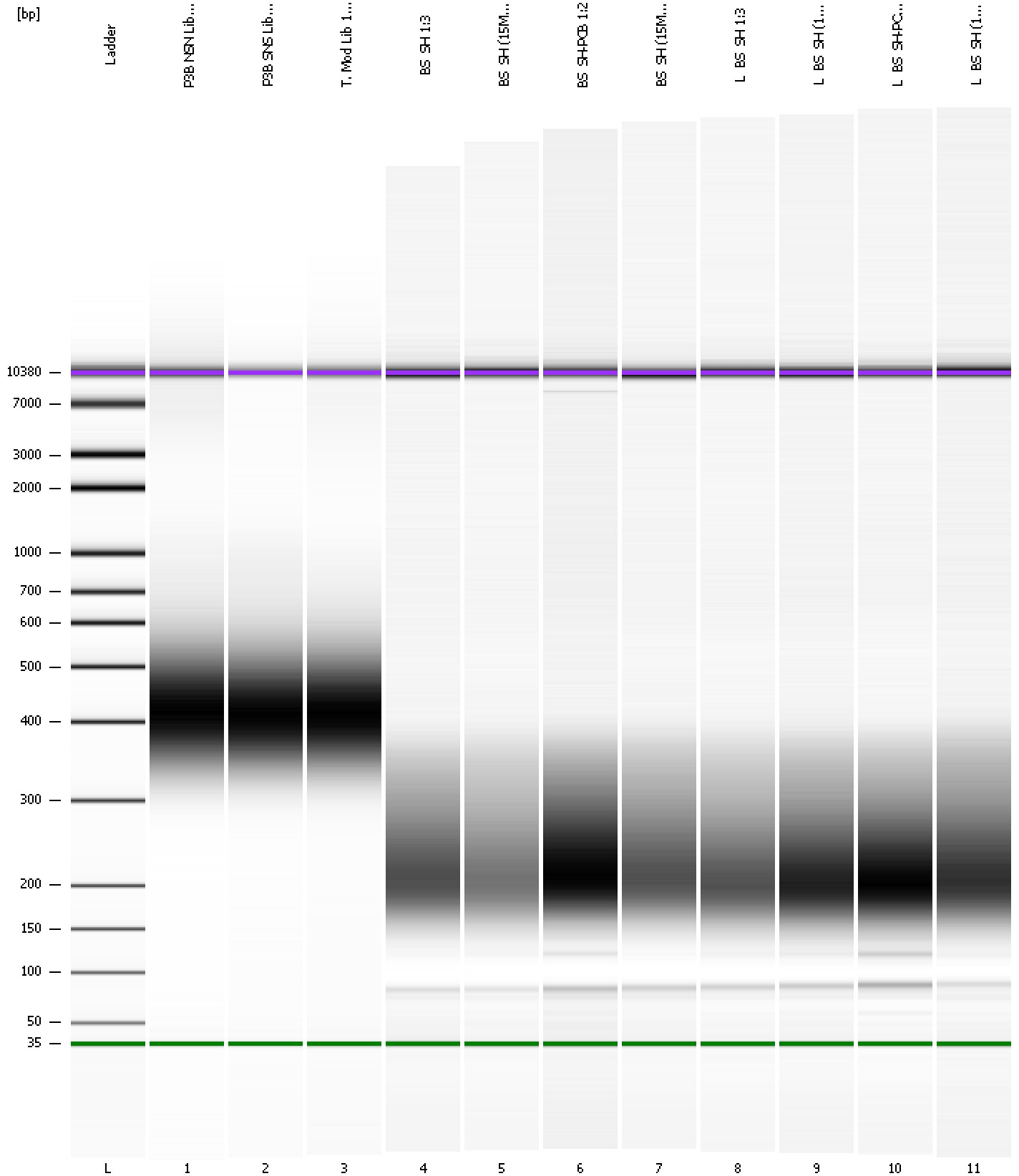
**Region table for sample 11 : L\_BS\_SH (15M)-PCB 1:2**

From [bp]	To [bp]	Average Size [bp]	Molarity [pmol/l]	Conc. [pg/μl]	Corr. Area	% of Total	Size distribution in CV [%]	Color
127	401	245	12,659.6	1,901.53	834.1	99	23.8	Blue

Assay Class: High Sensitivity DNA Assay  
Data Path: C:\...ents and Settings\Bioanalyzer\2013-02-26\2013-02-26\_001.xad

Created: 2/26/2013 10:35:50 AM  
Modified: 2/26/2013 11:19:16 AM

**Gel Image**





Assay Class: High Sensitivity DNA Assay  
 Data Path: C:\...ents and Settings\Bioanalyzer\2013-02-26\2013-02-26\_001.xad

Created: 2/26/2013 10:35:50 AM  
 Modified: 2/26/2013 11:19:16 AM

**Run Logbook**

Description	Number	Source	Category	Sub Category	Time	Time Zone	User	Host
Run ended on port 1 (Number of wells acquired: 12)		Instrument	Run		2/26/2013 11:17:09 AM	(GMT --08:00) Pacific Standard Time	UC Davis	D8XSMGH1
Run started on port 1 (File: C:\Documents and Settings\Bioanalyzer\2013-02-26\2013-02-26_001.xad)		Instrument	Run		2/26/2013 10:35:55 AM	(GMT --08:00) Pacific Standard Time	UC Davis	D8XSMGH1
Product Number : G2938B		Instrument	Run		2/26/2013 10:35:55 AM	(GMT --08:00) Pacific Standard Time	UC Davis	D8XSMGH1
Name :		Instrument	Run		2/26/2013 10:35:55 AM	(GMT --08:00) Pacific Standard Time	UC Davis	D8XSMGH1
Vendor : Agilent Technologies		Instrument	Run		2/26/2013 10:35:55 AM	(GMT --08:00) Pacific Standard Time	UC Davis	D8XSMGH1
Serial# : DE13701086		Instrument	Run		2/26/2013 10:35:55 AM	(GMT --08:00) Pacific Standard Time	UC Davis	D8XSMGH1
Firmware : C.01.069		Instrument	Run		2/26/2013 10:35:55 AM	(GMT --08:00) Pacific Standard Time	UC Davis	D8XSMGH1
Cartridge : Electrode		Instrument	Run		2/26/2013 10:35:55 AM	(GMT --08:00) Pacific Standard Time	UC Davis	D8XSMGH1