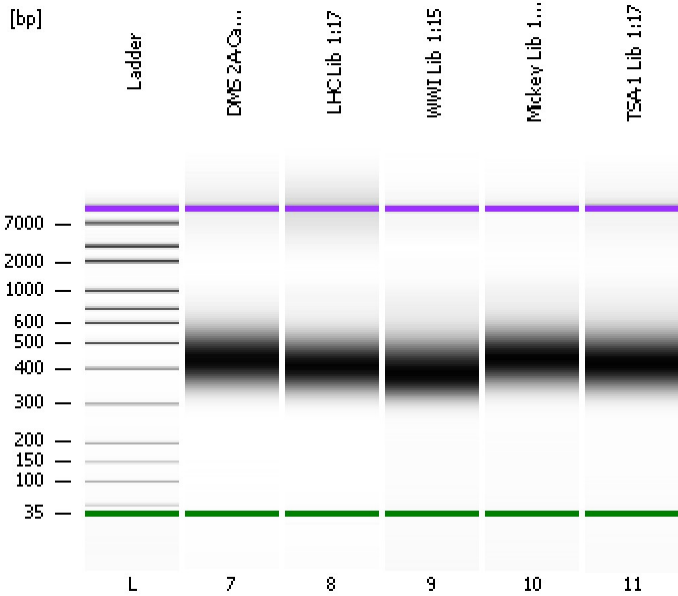


Assay Class: High Sensitivity DNA Assay
Data Path: C:\...ettings\Bioanalyzer\2013-02-26\2013-02-26_003_cDNA_Libs.xad

Created: 2/26/2013 2:55:06 PM
Modified: 2/26/2013 3:41:56 PM

Electrophoresis File Run Summary



Instrument Information:

Instrument Name: DE13701086 Firmware: C.01.069
Serial#: DE13701086 Type: G2938B

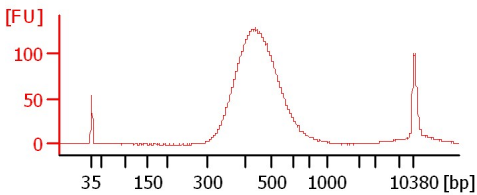
Assay Information:

Assay Origin Path: C:\Program Files\Agilent\2100 bioanalyzer\2100 expert\assays\dsDNA\High Sensitivity DNA.xsy
Assay Class: High Sensitivity DNA Assay
Version: 1.03
Assay Comments: Copyright © 2003-2010 Agilent Technologies

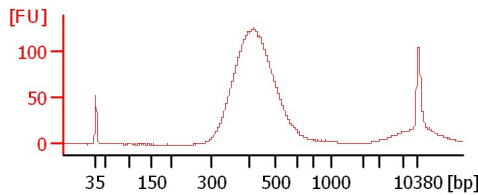
Chip Information:

Chip Lot #: Reagent Kit Lot #: Chip Comments:

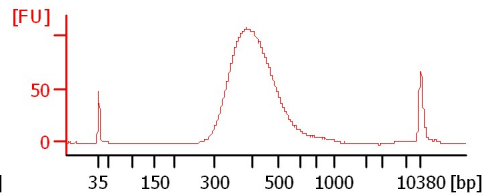
DMS 2A-Cam Lib 1:17



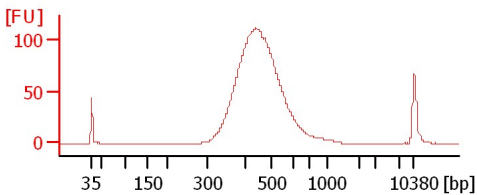
LHC Lib 1:17



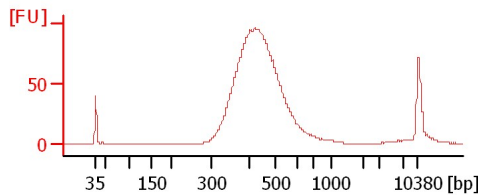
WWI Lib 1:15



Mickey Lib 1:18



TSA-1 Lib 1:17



Assay Class: High Sensitivity DNA Assay
Data Path: C:\...ettings\Bioanalyzer\2013-02-26\2013-02-26_003_cDNA_Libs.xad

Created: 2/26/2013 2:55:06 PM
Modified: 2/26/2013 3:41:56 PM

Electrophoresis File Run Summary (Chip Summary)

Sample Name	Sample Comment	Rest. Digest	Status	Observation	Result Label	Result Color
DMS 2A-Cam Lib 1:17		<input type="checkbox"/>				
LHC Lib 1:17		<input type="checkbox"/>				
WWI Lib 1:15		<input type="checkbox"/>				
Mickey Lib 1:18		<input type="checkbox"/>				
TSA-1 Lib 1:17		<input type="checkbox"/>				
Ladder		<input type="checkbox"/>				

Chip Lot # **Reagent Kit Lot #**

Chip Comments :

Assay Class: High Sensitivity DNA Assay
 Data Path: C:\...ettings\Bioanalyzer\2013-02-26\2013-02-26_003_cDNA_Libs.xad

Created: 2/26/2013 2:55:06 PM
 Modified: 2/26/2013 3:41:56 PM

Electrophoresis Assay Details

General Analysis Settings

Number of Available Sample and Ladder Wells (Max.) : 12
 Minimum Visible Range [s] : 32
 Maximum Visible Range [s] : 138
 Start Analysis Time Range [s] : 33
 End Analysis Time Range [s] : 137.5
 Ladder Concentration [pg/μl] : 1950
 Uses Standard Area for Ladder Fragments
 Lower Marker Concentration [pg/μl] : 125
 Upper Marker Concentration [pg/μl] : 75
 Used Upper Marker for Quantitation
 Standard Curve Fit is Point to Point
 Show Data Aligned to Lower and Upper Marker

Integrator Settings

Integration Start Time [s] : 33.05
 Integration End Time [s] : 137
 Slope Threshold : 0.8
 Height Threshold [FU] : 5
 Area Threshold : 0.1
 Width Threshold [s] : 0.6
 Baseline Plateau [s] : 0.5

Filter Settings

Filter Width [s] : 0.5
 Polynomial Order : 4

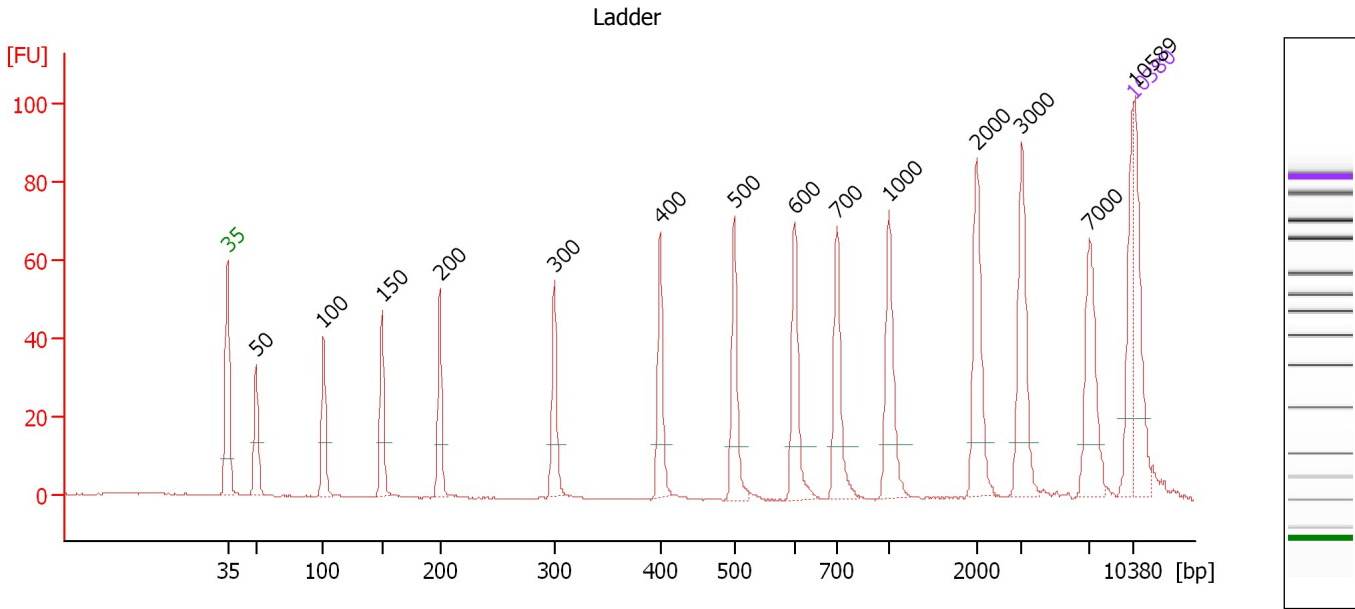
Ladder

Ladder Peak	Size	Area
1	35	160
2	50	210
3	100	208
4	150	221
5	200	242
6	300	270
7	400	305
8	500	306
9	600	336
10	700	321
11	1000	366
12	2000	413
13	3000	411
14	7000	400
15	10380	214

Assay Class: High Sensitivity DNA Assay
 Data Path: C:\...ettings\Bioanalyzer\2013-02-26\2013-02-26_003_cDNA_Libs.xad

Created: 2/26/2013 2:55:06 PM
 Modified: 2/26/2013 3:41:56 PM

Electropherogram Summary



Overall Results for Ladder

Noise: 0.1

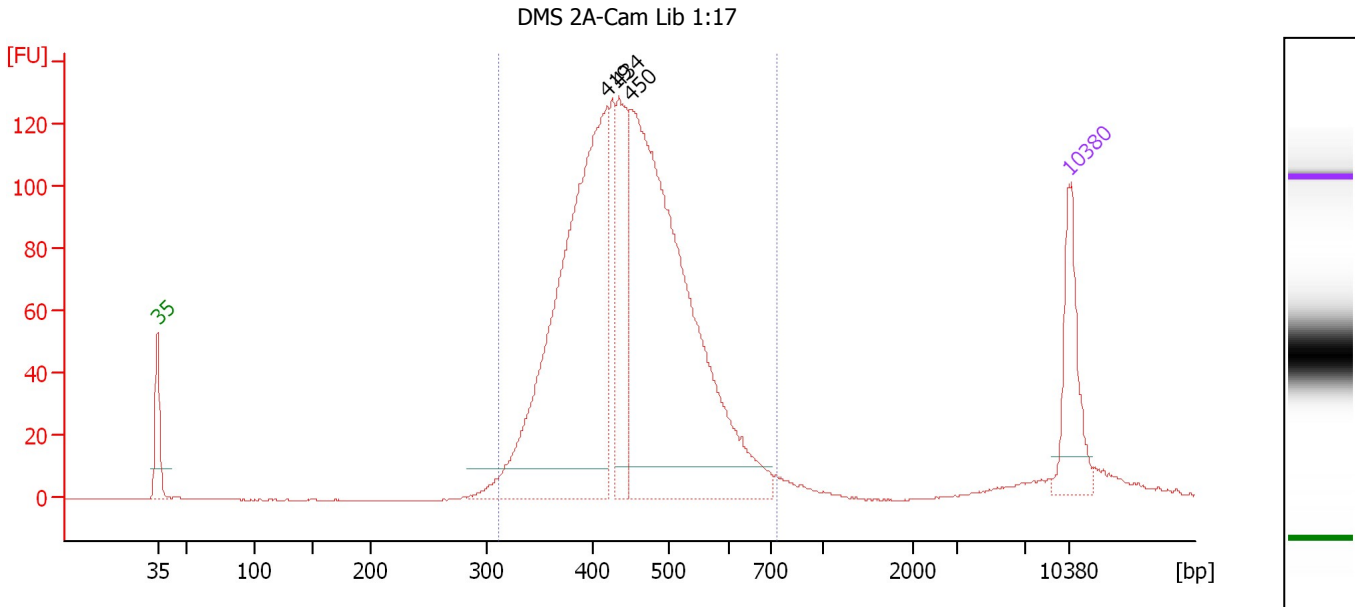
Peak table for Ladder

Peak	Size [bp]	Conc. [pg/μl]	Molarity [pmol/l]	Observations
1	35	125.00	5,411.3	Lower Marker
2	50	150.00	4,545.5	Ladder Peak
3	100	150.00	2,272.7	Ladder Peak
4	150	150.00	1,515.2	Ladder Peak
5	200	150.00	1,136.4	Ladder Peak
6	300	150.00	757.6	Ladder Peak
7	400	150.00	568.2	Ladder Peak
8	500	150.00	454.5	Ladder Peak
9	600	150.00	378.8	Ladder Peak
10	700	150.00	324.7	Ladder Peak
11	1,000	150.00	227.3	Ladder Peak
12	2,000	150.00	113.6	Ladder Peak
13	3,000	150.00	75.8	Ladder Peak
14	7,000	150.00	32.5	Ladder Peak
15	10,380	75.00	10.9	Upper Marker
16	10,589	0.00	0.0	

Assay Class: High Sensitivity DNA Assay
 Data Path: C:\...ettings\Bioanalyzer\2013-02-26\2013-02-26_003_cDNA_Libs.xad

Created: 2/26/2013 2:55:06 PM
 Modified: 2/26/2013 3:41:56 PM

Electropherogram Summary Continued ...



Setpoint Deviations for sample 7 : DMS 2A-Cam Lib 1:17

Height Threshold [FU] : 10

Overall Results for sample 7 : DMS 2A-Cam Lib 1:17

Number of peaks found: 3 Corr. Area 1: 1,797.3
 Noise: 0.1

Peak table for sample 7 : DMS 2A-Cam Lib 1:17

Peak	Size [bp]	Conc. [pg/μl]	Molarity [pmol/l]	Observations
1	35	125.00	5,411.3	Lower Marker
2	419	686.70	2,485.1	
3	434	162.60	568.1	
4	450	786.45	2,650.8	
5	10,380	75.00	10.9	Upper Marker

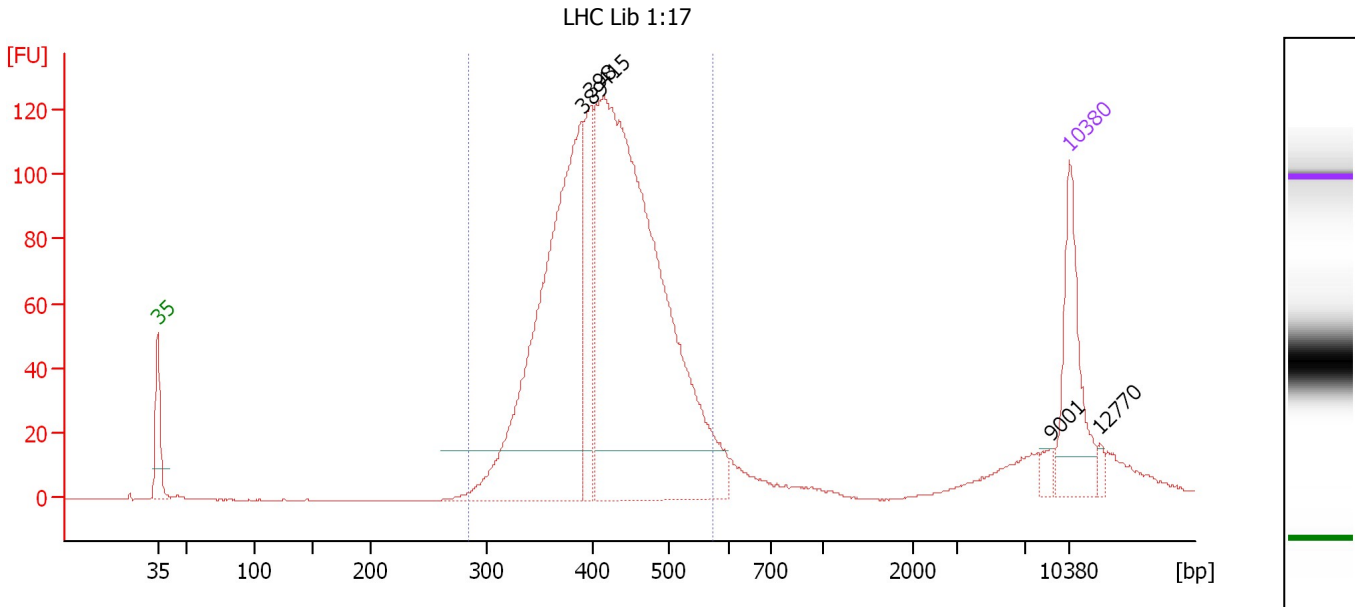
Region table for sample 7 : DMS 2A-Cam Lib 1:17

From [bp]	To [bp]	Average Size [bp]	Molarity [pmol/l]	Conc. [pg/μl]	Corr. Area	% of Total	Size distribution in CV [%]	Color
311	734	451	5,903.7	1,701.74	1,797.3	95	16.4	Blue

Assay Class: High Sensitivity DNA Assay
 Data Path: C:\...ettings\Bioanalyzer\2013-02-26\2013-02-26_003_cDNA_Libs.xad

Created: 2/26/2013 2:55:06 PM
 Modified: 2/26/2013 3:41:56 PM

Electropherogram Summary Continued ...



Setpoint Deviations for sample 8 : LHC Lib 1:17

Height Threshold [FU] : 15

Overall Results for sample 8 : LHC Lib 1:17

Number of peaks found: 5 Corr. Area 1: 1,626.9
 Noise: 0.2

Peak table for sample 8 : LHC Lib 1:17

Peak	Size [bp]	Conc. [pg/μl]	Molarity [pmol/l]	Observations
1	35	125.00	5,411.3	Lower Marker
2	389	475.75	1,852.2	
3	398	99.56	379.5	
4	415	766.20	2,799.4	
5	9,001	7.87	1.3	
6	10,380	75.00	10.9	Upper Marker
7	12,770	0.00	0.0	

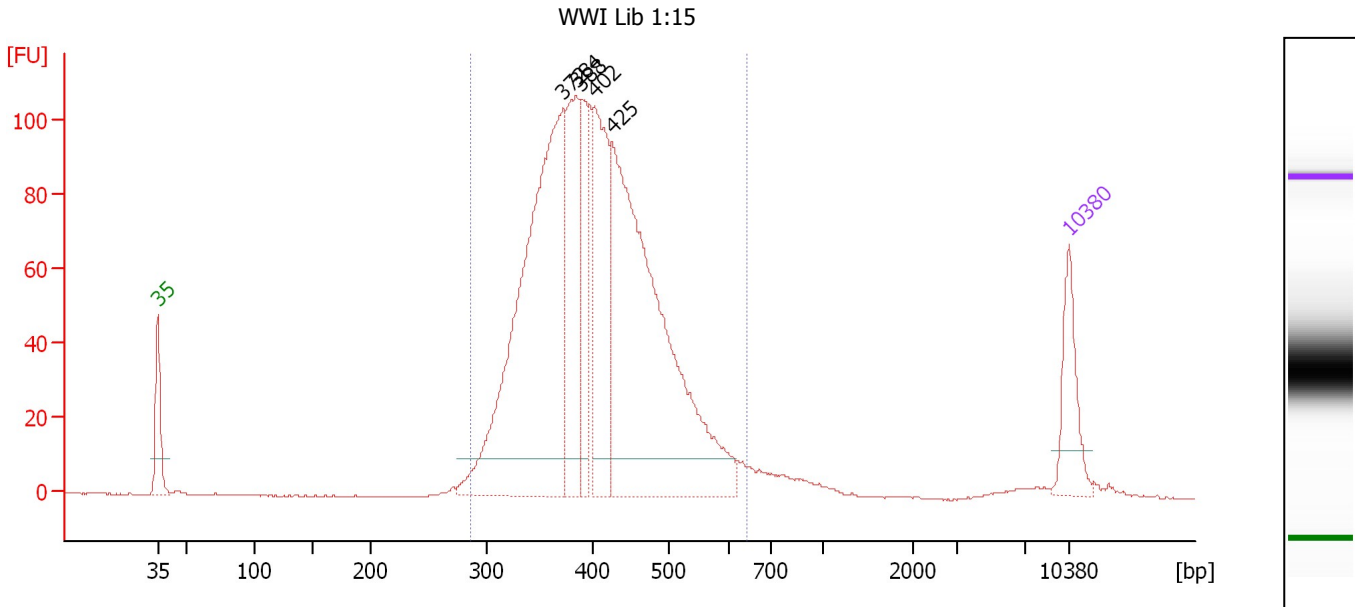
Region table for sample 8 : LHC Lib 1:17

From [bp]	To [bp]	Average Size [bp]	Molarity [pmol/l]	Conc. [pg/μl]	Corr. Area	% of Total	Size distribution in CV [%]	Color
284	575	421	4,870.7	1,320.63	1,626.9	89	13.9	Blue

Assay Class: High Sensitivity DNA Assay
 Data Path: C:\...ettings\Bioanalyzer\2013-02-26\2013-02-26_003_cDNA_Libs.xad

Created: 2/26/2013 2:55:06 PM
 Modified: 2/26/2013 3:41:56 PM

Electropherogram Summary Continued ...



Setpoint Deviations for sample 9 : WWI Lib 1:15

Height Threshold [FU] : 10

Overall Results for sample 9 : WWI Lib 1:15

Number of peaks found: 5 Corr. Area 1: 1,578.9
 Noise: 0.2

Peak table for sample 9 : WWI Lib 1:15

Peak	Size [bp]	Conc. [pg/μl]	Molarity [pmol/l]	Observations
1	35	125.00	5,411.3	Lower Marker
2	372	836.16	3,405.1	
3	384	246.66	973.8	
4	388	156.10	609.2	
5	402	260.32	982.3	
6	425	825.05	2,938.7	
7	10,380	75.00	10.9	Upper Marker

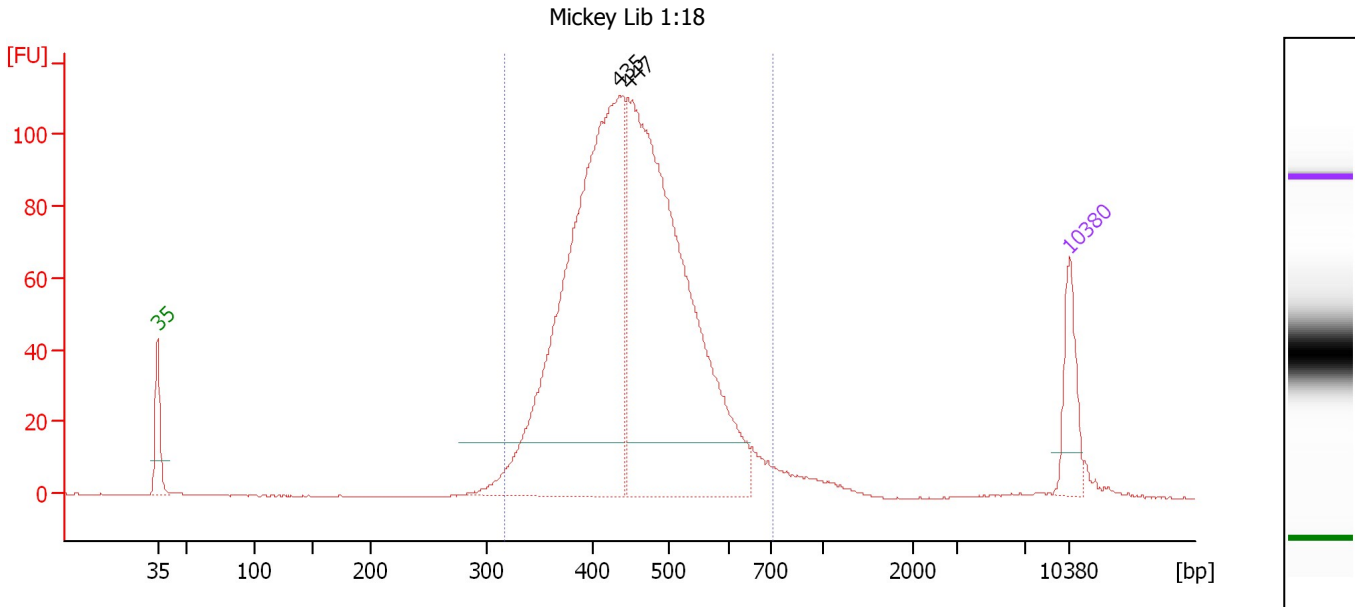
Region table for sample 9 : WWI Lib 1:15

From [bp]	To [bp]	Average Size [bp]	Molarity [pmol/l]	Conc. [pg/μl]	Corr. Area	% of Total	Size distribution in CV [%]	Color
287	641	411	9,117.9	2,395.20	1,578.9	95	16.3	Blue

Assay Class: High Sensitivity DNA Assay
 Data Path: C:\...ettings\Bioanalyzer\2013-02-26\2013-02-26_003_cDNA_Libs.xad

Created: 2/26/2013 2:55:06 PM
 Modified: 2/26/2013 3:41:56 PM

Electropherogram Summary Continued ...



Setpoint Deviations for sample 10 : Mickey Lib 1:18

Height Threshold [FU] : 15

Overall Results for sample 10 : Mickey Lib 1:18

Number of peaks found: 2 Corr. Area 1: 1,514.7
 Noise: 0.1

Peak table for sample 10 : Mickey Lib 1:18

Peak	Size [bp]	Conc. [pg/μl]	Molarity [pmol/l]	Observations
1	35	125.00	5,411.3	Lower Marker
2	435	1,237.76	4,307.8	
3	447	1,224.28	4,154.3	
4	10,380	75.00	10.9	Upper Marker

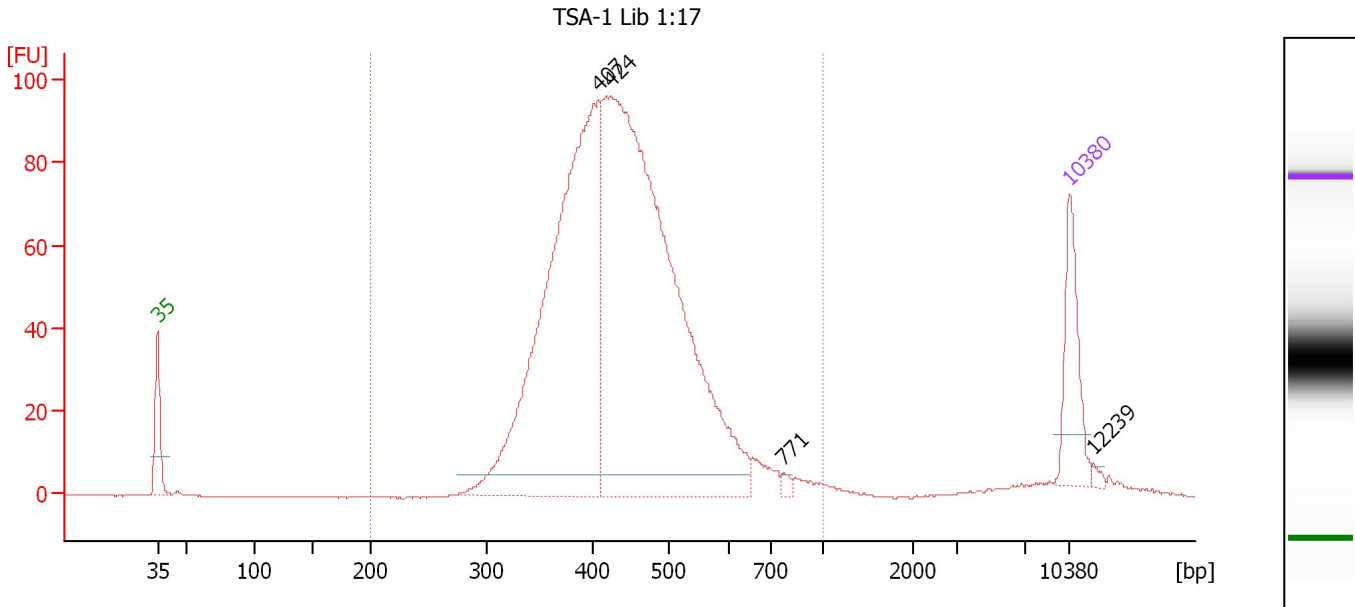
Region table for sample 10 : Mickey Lib 1:18

From [bp]	To [bp]	Average Size [bp]	Molarity [pmol/l]	Conc. [pg/μl]	Corr. Area	% of Total	Size distribution in CV [%]	Color
316	702	455	8,585.0	2,497.28	1,514.7	95	16.1	Blue

Assay Class: High Sensitivity DNA Assay
 Data Path: C:\...ettings\Bioanalyzer\2013-02-26\2013-02-26_003_cDNA_Libs.xad

Created: 2/26/2013 2:55:06 PM
 Modified: 2/26/2013 3:41:56 PM

Electropherogram Summary Continued ...



Overall Results for sample 11 : TSA-1 Lib 1:17

Number of peaks found: 4 Corr. Area 1: 1,400.3
 Noise: 0.1

Peak table for sample 11 : TSA-1 Lib 1:17

Peak	Size [bp]	Conc. [pg/μl]	Molarity [pmol/l]	Observations
1	35	125.00	5,411.3	Lower Marker
2	407	805.46	2,998.9	
3	424	1,125.12	4,022.7	
4	771	6.36	12.5	
5	10,380	75.00	10.9	Upper Marker
6	12,239	0.00	0.0	

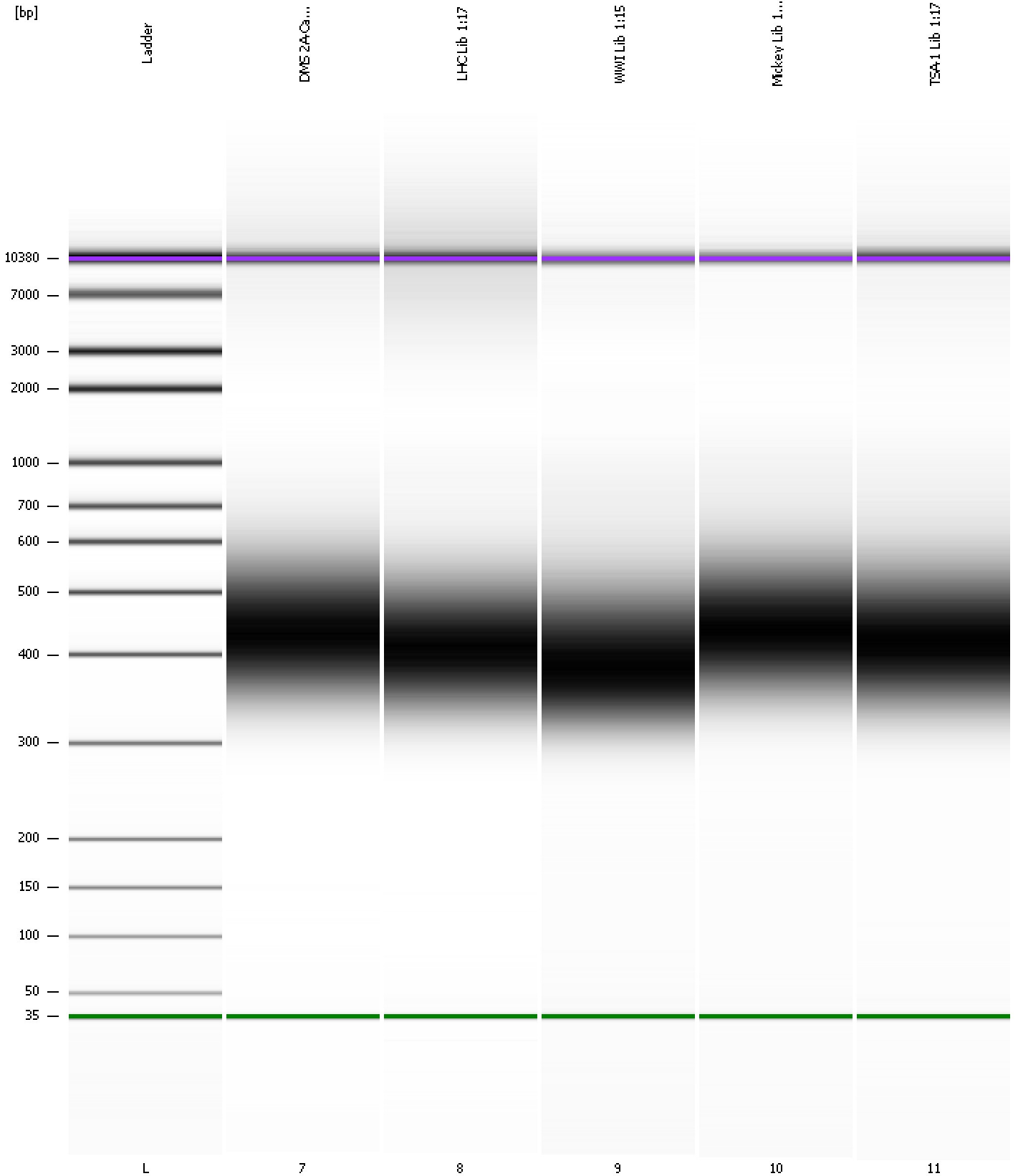
Region table for sample 11 : TSA-1 Lib 1:17

From [bp]	To [bp]	Average Size [bp]	Molarity [pmol/l]	Conc. [pg/μl]	Corr. Area	% of Total	Size distribution in CV [%]	Color
200	1,000	445	7,131.9	2,006.85	1,400.3	96	20.2	Blue

Assay Class: High Sensitivity DNA Assay
Data Path: C:\...ettings\Bioanalyzer\2013-02-26\2013-02-26_003_cDNA_Libs.xad

Created: 2/26/2013 2:55:06 PM
Modified: 2/26/2013 3:41:56 PM

Gel Image



Assay Class: High Sensitivity DNA Assay
 Data Path: C:\...ettings\Bioanalyzer\2013-02-26\2013-02-26_003_cDNA_Libs.xad

Created: 2/26/2013 2:55:06 PM
 Modified: 2/26/2013 3:41:56 PM

Run Logbook

Description	Number	Source	Category	Sub Category	Time	Time Zone	User	Host
Run ended on port 1 (Number of wells acquired: 12)		Instrument	Run		2/26/2013 3:36:20 PM	(GMT --08:00) Pacific Standard Time	UC Davis	D8XSMGH1
Run started on port 1 (File: C:\Documents and Settings\Bioanalyzer\2013-02-26\2013-02-26_003.xad)		Instrument	Run		2/26/2013 2:55:07 PM	(GMT --08:00) Pacific Standard Time	UC Davis	D8XSMGH1
Product Number : G2938B		Instrument	Run		2/26/2013 2:55:07 PM	(GMT --08:00) Pacific Standard Time	UC Davis	D8XSMGH1
Name :		Instrument	Run		2/26/2013 2:55:07 PM	(GMT --08:00) Pacific Standard Time	UC Davis	D8XSMGH1
Vendor : Agilent Technologies		Instrument	Run		2/26/2013 2:55:07 PM	(GMT --08:00) Pacific Standard Time	UC Davis	D8XSMGH1
Serial# : DE13701086		Instrument	Run		2/26/2013 2:55:07 PM	(GMT --08:00) Pacific Standard Time	UC Davis	D8XSMGH1
Firmware : C.01.069		Instrument	Run		2/26/2013 2:55:07 PM	(GMT --08:00) Pacific Standard Time	UC Davis	D8XSMGH1
Cartridge : Electrode		Instrument	Run		2/26/2013 2:55:07 PM	(GMT --08:00) Pacific Standard Time	UC Davis	D8XSMGH1